



WILLAMETTE
UNIVERSITY

CHAMBER CHOIR
&
WILLAMETTE
SINGERS



WILLAMETTE UNIVERSITY CHOIR TOUR 1995

DR. WALLACE LONG JR., DIRECTOR

CHAMBER CHOIR

Venite, Exsultemus Domino Jan Pieterzoon Sweelinck
 edited by: Dennis P. Kudlawiec
 Jesus Christ the Apple Tree Elizabeth Poston
 Kyrie, Mass XI arr. Paul Christiansen
 Gloria Jeffrey Rickard
 Sanctus Vijay Singh
 percussion: Kirsten Swanson, Jon Clippinger,
 Catherine McRae, Tony Diaz
 New Day arr. Norm Wallen
 Jubilant Song René Clausen
 soloist: Jennifer Davis
 I Have Had Singing music: Steven Sametz
 words: Fred Mitchel

WILLAMETTE SINGERS

Freight Trane Tommy Flanagan/Vijay Singh
 arr. Vijay Singh
 Joy Rare Silk
 arr. G. Niewood/Todd Buffa
 The More I See You Gordon
 arr. Gary Brown
 Blackbird Lennon & McCartney
 arr. Gary Rosen
 Ain't Misbehavin' "Fats" Waller
 arr. Vijay Singh
 I Just Can't Wait To See You arr. Dave Cozier
 A.B.C. The Jackson 5
 arr. Michele Weir
 Johnny One Note Rodgers & Hart
 arr. Gene Puerling
 edited by Phil Mattson
 I Love Bein' Here With You arr. Kirk Marcy

CHOIR PERSONNEL

CHAMBER CHOIR PERSONNEL

Soprano I

Maria Guillen Salem, OR
 Beth Lindley Salem, OR
 Mirinda Rosevear Salem, OR
 Tonja Saxe Salem, OR
 Jacqueline Sparks*+ Salem, OR

Soprano II

Dorcas Brown*+ Milwaukie, OR
 Sarah Brown Red Bluff, CA
 Jenna Fischer Port Angeles, WA
 Nicole Larzelier Homedale, ID
 Catherine McRae Sandy, OR
 Glenda Meliza Salem, OR

Alto I

Jennifer Davis*+ Keizer, OR
 Tammy Finch Roseburg, OR
 Leslie Friese Portland, OR
 Sarah Mattox Bend, OR
 Erin Sutherland The Dalles, OR

Alto II

Laura Beth Bunker Lafayette, CA

Cullen Philippson Lake Oswego, OR
 Kenneth Ray Portland, OR
 Jed Thomas*+ The Dalles, OR

Officers

President Colin Folawn
 Vice-President Nich Anderson
 Secretary Dorcas Brown
 Historian Tony Diaz

* Section Leaders
 + Executive Council

WILLAMETTE SINGERS PERSONNEL

Soprano

Maria Guillen Salem, OR
 Beth Lindley Salem, OR
 Susannah Martin San Diego, CA

Alto

Dorcas Brown Milwaukie, OR
 Georgina Larcher Independence, OR
 Erin Sutherland The Dalles, OR

ABOUT THE DIRECTOR

Dr. Wallace H. Long Jr.

Dr. Long has been Director of Choral Activities at Willamette University since 1983. In addition to conducting three of the University's choral ensembles, he is department chair. He has numerous teaching responsibilities and is involved in community and professional groups, most notably, Male Ensemble Northwest.

Wallace received his master of music degree and doctorate in choral conducting from the University of Arizona at Tucson, where he studied with Maurice Skones, Jean Berger and David Wilson. A frequent vocal/choral adjudicator and clinician, Wallace is an active supporter of public school music in the Northwest. Performances by groups under his direction include the State Conference for the Oregon Music Educators Association, the National Conventions of the Music Educators National Conference, the Northwestern Regional Convention for the American Choral Directors Association, and the International Convention of the International Association of Jazz Educators in

CHOIR PERSONNEL

CHAMBER CHOIR PERSONNEL

Soprano I

Maria Guillen Salem, OR
Beth Lindley Salem, OR
Mirinda Rosevear Salem, OR
Tonja Saxe Salem, OR
Jacqueline Sparks*+ Salem, OR

Soprano II

Dorcas Brown*+ Milwaukie, OR
Sarah Brown Red Bluff, CA
Jenna Fischer Port Angeles, WA
Nicole Larzelier Homedale, ID
Catherine McRae Sandy, OR
Glenda Meliza Salem, OR

Alto I

Jennifer Davis*+ Keizer, OR
Tammy Finch Roseburg, OR
Leslie Friese Portland, OR
Sarah Mattox Bend, OR
Erin Sutherland The Dalles, OR

Alto II

Laura Beth Bunker Lafayette, CA
Jonna Lewis Hermiston, OR
Marika Paez+ San Rafael, CA
Lydia Smith*+ Zanesville, OH
Kristi Taylor Shaver Lake, CA

Tenor I

Raymond Fordyce*+ Salem, OR
Jeff Grove Oregon City, OR
Hong Thov Tualatin, OR
Kirk Masterson Golden, CO

Tenor II

Scott Anderson Santa Barbara, CA
Jonathan Eames Lafayette, CA
Colin Folawn*+ Portland, OR
Eric Wright Bellingham, WA

Bass I

Nich Anderson*+ Salem, OR
Casey DeMott Sims Santa Barbara, CA
Roland Lee The Philippines
Colin Murray Sandy, OR

Bass II

Jon Clippinger+ Portland, OR
Tony Diaz+ Gresham, OR
Jay Kennedy Corvallis, OR
Andy Miller+ Bend, OR

Cullen Philippon Lake Oswego, OR
Kenneth Ray Portland, OR
Jed Thomas*+ The Dalles, OR

Officers

President Colin Folawn
Vice-President Nich Anderson
Secretary Dorcas Brown
Historian Tony Diaz

* Section Leaders
+ Executive Council

WILLAMETTE SINGERS PERSONNEL

Soprano

Maria Guillen Salem, OR
Beth Lindley Salem, OR
Susannah Martin San Diego, CA

Alto

Dorcas Brown Milwaukie, OR
Georgina Larcher Independence, OR
Erin Sutherland The Dalles, OR

Tenor

Scott Anderson Santa Barbara, CA
Adam McMurray Salem, OR
Jeff Grove Oregon City, OR

Bass

Nich Anderson Salem, OR
Tony Diaz Gresham, OR
Steve Milburn Missoula, MT

Piano

Dave Fleschner Trinidad, CA

Bass

Tyler Smith Portland, OR

Drums

Kirsten Swanson Santa Cruz, CA

Saxophone

Jamie Morton Bellevue, WA

Guitar

Colin Folawn Portland, OR

Sound Technicians

Jon Clippinger Portland, OR
Jacqueline Sparks Salem, OR

ABOUT THE DIRECTOR

Dr. Wallace H. Long Jr.

Dr. Long has been Director of Choral Activities at Willamette University since 1983. In addition to conducting three of the University's choral ensembles, he is department chair. He has numerous teaching responsibilities and is involved in community and professional groups, most notably, Male Ensemble Northwest.

Wallace received his master of music degree and doctorate in choral conducting from the University of Arizona at Tucson, where he studied with Maurice Skones, Jean Berger and David Wilson. A frequent vocal/choral adjudicator and clinician, Wallace is an active supporter of public school music in the Northwest. Performances by groups under his direction include the State Conference for the Oregon Music Educators Association, the National Conventions of the Music Educators National Conference, the Northwestern Regional Convention for the American Choral Directors Association, and the International Convention of the International Association of Jazz Educators in New Orleans and Boston.

His work with high school students has been recognized by the Kansas Music Educators Association with an invitation to direct the Kansas All-State Choir in 1993. In the Summer of 1993, Dr. Long was invited to become a member of the Festival Singers of The Robert Shaw Choral Institute. As a member of the Festival Singers, he performed Benjamin Britten's "War Requiem" at Carnegie Hall in January of 1994 and during the Summer of 1994 he traveled to Souillac, France, to record two compact discs of contemporary choral literature for Robert Shaw. He directed the 1994 High School Men's Honor Choir at the Northwest Regional Convention of the American Choral Directors Association in Tacoma, Washington. In November of 1994 he directed the Great Falls, Montana, High School Festival Choir. In March of 1995 he will perform with the Male Ensemble Northwest at the American Choral Directors Association National Convention in Washington, D.C.

Dr. Long is immediate past president of the Oregon chapter of the American Choral Directors Association and is an active member of the Oregon Music Educators Association and the National Association of Jazz Educators.

Willamette Chamber Choir

The Willamette Chamber Choir is a 36-voice ensemble open by audition to all Willamette University students. A wide variety of literature selected from the Renaissance through the contemporary periods is studied and performed each year. The group tours annually throughout the Northwest and is frequently invited to perform at music conventions and workshops held by the American Choral Directors Association, Music Educators National Conference and Oregon Music Educators Association.

Willamette Singers

The Willamette Singers is a 12-voice ensemble which explores music particularly suitable to small groups of highly skilled and flexible vocalists. Willamette University is one of the few four-year universities in Oregon which offers experience in vocal jazz. The Willamette Singers participate in a yearly tour and in recent years have been invited to perform for the Northwest Regional Convention of the American Choral Directors Association in Seattle, Washington, the National Convention of the Music Educators



Willamette Singers

National Conference in Indianapolis, Indiana, and the International Conference of the International Association of Jazz Educators in New Orleans, Louisiana. The Singers concluded last year's tour by traveling to Boston where they once again performed for the International Association of Jazz Educators' International Conference.

Male Ensemble Willamette

Male Ensemble Willamette is, as its name would suggest, an all-male group, which sings the full spectrum of vocal music — from classical to doo-wop and barbershop.

Willamette University Women's Choir

Willamette University Women's Choir is a choral organization which explores and performs works written for treble voices from all historical periods and styles, particularly those with texts and music by women.

Willamette Master Chorus

The Willamette University Master Chorus is a 90-voice group whose membership is drawn from Salem community singers, Willamette students, faculty and staff. The organization has grown to be an exceptional performing ensemble, offering a large repertoire of classical music and hosting an annual "Messiah Sing-Together" each Christmas season, in which approximately 1000 people participate.



Chamber Choir

Willamette University

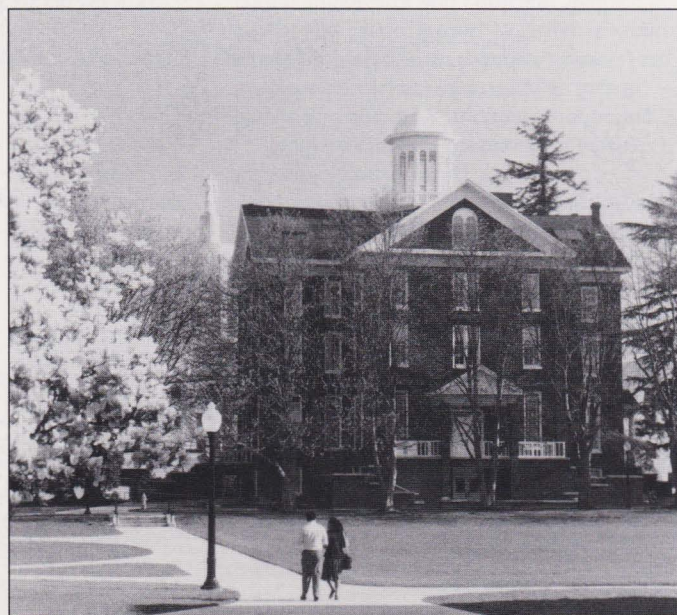
Willamette University is a small, independent, co-educational university with a college of liberal arts and graduate programs in law, management, and teaching. Founded in 1842, it is the oldest college in the west and has a historic relationship with The United Methodist Church. Its charter is non-denominational.

Willamette has long been known for its intellectual vitality, its cohesive academic community, its concern for each student, communication between students and faculty members, and education which prepares students for successful futures.

Music at Willamette

The Willamette University Music Department offers the music major intensive professional training in several specialized music areas coupled with a balanced core of liberal arts courses. For the non-major, the department offers performance opportunities through private instruction, performing ensembles of all types and a wide selection of general music courses, many of which are designed to meet the fine arts requirements of Willamette's general education program. The music department annually serves 300 to 400 students. Willamette offers six different music degrees: bachelor of music with emphasis in music education, bachelor of music in performance, bachelor of music in music therapy, bachelor of arts in music, bachelor of music in

composition, bachelor of science in music, and master of arts in teaching. The music therapy program is a unique interdisciplinary field incorporating coursework in music with special education, psychology and habilitative sciences.



TRANSLATIONS

Gloria

Glory to God in the highest.
And on earth peace to all those of good will.
We praise thee. We bless thee.
We worship thee. We glorify thee.
We give thanks to thee according to thy great glory.
Lord God, Heavenly King, God the Father almighty.
Lord Jesus Christ, the only begotten Son.
Lord God, Lamb of God, Son of the Father.
Thou who takest away the sins of the world,
have mercy upon us.
Thou who takest away the sins of the world,
receive our prayer.
Thou who sittest at the right hand of the Father,
have mercy upon us.
For Thou alone art holy.
Thou alone art the Lord.
Thou alone art the most high, Jesus Christ.
With the Holy Spirit in the glory of God the Father. Amen.

Kyrie

Lord have mercy.
Christ have mercy.
Lord have mercy.

Sanctus

Holy Holy Holy,
Lord God of Hosts.
Heaven and earth are full of thy glory
Hosanna in the highest.

Venite, Exsultemus Domino

O Come let us sing unto the Lord,
Sing joyfully to our salvation,
Come let us greet the Lord with thanksgiving.
And with psalms, sing jubilantly to him,
For the Lord is a great God, and a great King,
praised beyond all gods.

TOUR ITINERARY

Sunday, January 8, 1995

Salem, Oregon

Northwest Tour Kick-Off Concert

Smith Auditorium, 7:00 p.m.

Willamette University

with: North Salem H.S. and Sprague H.S.

Monday, January 9, 1995

Boise, Idaho

First United Methodist Church

"Cathedral of the Rockies," 7:30 p.m.

with: Borah H.S., Boise H.S., Capitol H.S.,
and Meridian H.S.

Tuesday, January 10, 1995

Boise, Idaho

Borah High School, 8:00 a.m.

Jazz Concert

Spokane, Washington

Cathedral of Our Lady of Lourdes, 8:00 p.m.

with: Gonzaga Prep., Ferris H.S., and Shadle Park H.S.

Wednesday, January 11, 1995

Spokane, Washington

Gonzaga Prep. School, 8:15 a.m.

Jazz Concert

Whidbey Island

Coupeville, Washington

Coupeville Performing Arts Center, 8 p.m.

Thursday, January 12, 1995

Coupeville, Washington

Coupeville High School, 9:00 a.m.

Jazz Concert

Redmond, Washington

Redmond United Methodist Church, 7:30 p.m.

with: Redmond H.S., Everett H.S., and Shoreline C.C.

Friday, January 13, 1995

Redmond, Washington

Redmond High School, 8:30 a.m.

Jazz Concert

WILLAMETTE UNIVERSITY CHAMBER CHOIR & WILLAMETTE SINGERS TOUR 1995