

1842



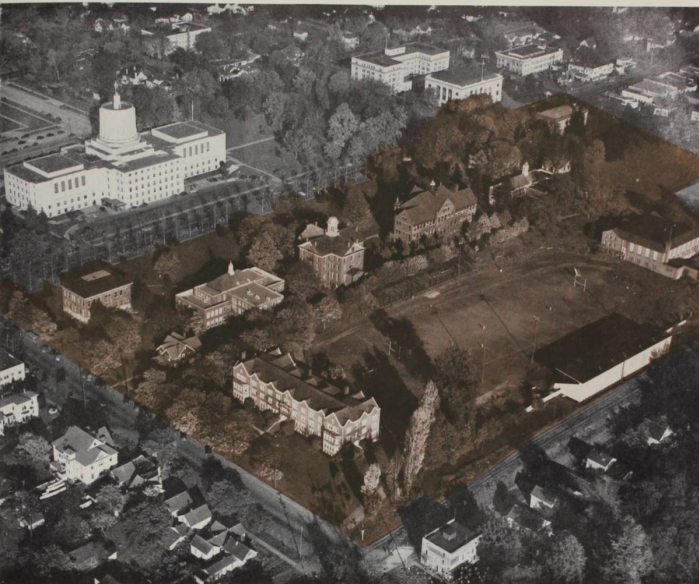
WALLULA

WILLAMETTE UNIVERSITY
LIBRARY

Call Number

398795
W. O. R. L.
10-17-42

1842 . . . ONE HUNDREDTH ANNIVERSARY



WILLAMETTE
UNIVERSITY

1942 *Wallulah*

ARTHUR WILSON
Editor in Chief

RALPH SCHLESINGER
Publications Manager

PUBLISHED BY THE STUDENT BODY
OF WILLAMETTE UNIVERSITY AT
SALEM, OREGON . . . VOLUME 32

UNIVERSITY
WILLAMETTE
LIBRARY





Dedication

TO THE FOUNDING FATHERS

To the men whose early visions and intellectual courage enable us to enjoy the advantages of higher education . . . to the men whose high principles and noble convictions were the basis for Willamette's ideals and traditions . . . to the men who created and named our University we dedicate this Centennial edition of the *Wallulah*.

**WILLAMETTE
IN
REVIEW**



WILLAMETTE WELCOMES THE CLASS OF '45



From Tacoma, Washington, comes Freshman Nancy Austin eagerly anticipating her first year at college. At Lausanne Hall she is greeted by President June Woldt.



Dean of Freshmen Thompson helps Nancy plan her schedule.



At the Faculty Reception Nancy is introduced to Dean Geist. . . . Tom Hall rings up another sale in the bookstore. . . . Below: Nancy and Dick Stacer exchange signatures at the YM-YW Formal Reception.



At Stubby's Nancy relaxes after a tiring day of registration with friends Jan Johnson, Eleanor Todd, and Bettie Browne. . . . Below: With the payment of tuition and fees to Business Secretary N. S. Savage, Nancy is duly enrolled as a Willamette student.



REMEMBER

FROSH

?



What has that man Toolson got that will make a gal like Florence Duffy get down on her knees? The "W" club may have something to do with it.



Peggy Newlee is so particular about her smile.



Aw, come out fellas—we can take it.

Ribbon Salesman Hal MacAbee doing some cash business.

Just a happy little Kanearoo Court frolic.





Homecoming dance chairman Cleo Nissen and student body proxy Ralph May assist in decorating the gym for the victory dance.



The Delta Phis' "leaping lizzie" brings forth more laughs than din.

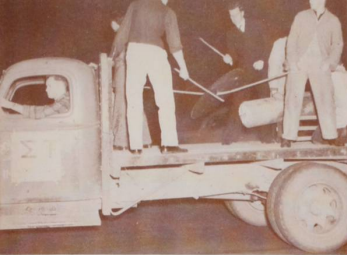


Sigma Tau's capture first place in annual sign contest. Below. Fresh Bob Weaver, Richard Wicks, Abe Steinbock take time out from early morning leaf raking to talk things over with Emma Lou East. . . . Second place honors in the sign contest go to the APA's.



Committee wheels commence turning as Homecoming chairman Dick Stacer outlines plans for a gala week-end to committee members Ralph Schlesinger, Marion Sanders, Bob Blanding, Dave Putnam, and Cleo Nissen.





Pounding buzz-saw blades and water-tanks the Sigs bang their way to victory in the noise parade.



You can't hear the screaming coeds, but this truck load of Beta Chis is making plenty of noise.

SHELLAC THE LUMBERJACKS!

The 1941 Homecoming, directed by enterprising Dick Stacer, was acclaimed by grads as the best in many years. A novel innovation to this year's program was the exciting Frosh-Soph greased pole contest. The rooks downed the second year men in this event as well as the traditional bag rush.

Following the Bearcats' 55-7 shellacking of hapless C.P.S. Friday night, students and grads celebrated with a victory dance in the gym.

A comic Chinese drama, "The Yellow Jacket", directed by Mrs. Ringnald, climaxed Saturday's events.

Wiff Achor won the slogan contest prize with his "Shellac the Lumberjacks".



CENTENNIAL



Century Girl
Nancy Austin



Shirley Morgan
Bettie Browne
Pollyanna Shinkle
Nancy Austin
Catherine Thomas

CELEBRATION



SCENES BEFORE AND DURING THE CENTURY BALL.







Why, Hank, and we didn't even know you could play!

FRESHMAN GLEE



A couple of freshmen . . . but good!



Sophomore class in one of its quieter and more serious moments?

Poor freshmen . . . they tried so hard.



It's precision that counts—they keep tellin' themselves.

Look, once you get it, it's simple.





The seniors grow up.



Baby Bob Blissfully Brandishes Bottle. It is so milk!



Come and get it, seniors . . . and they really did!

The seniors . . . for whom the bell tolls.



In anybody's language, Ray Short is some baby!



The light that failed . . . for the junior class.





They got Puck treed
... anyway you look
at it.



Quote—this hurts you more than it does me—unquote.



The one with the
night-cap is Stacer.

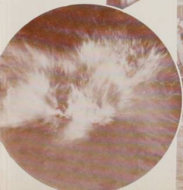


Dis is a clip joint, see?

This is confusin' ...
even upside down we
don't know him.



Wes, the mess, alias Pie-face McWain, looking
almost good enough to eat.





MAY WEEKEND



Clarence Wicks . . . May Weekend Manager.

"Something doing every minute" was the slogan of May Weekend Manager Clarence Wicks and his committee. And well did he keep that promise. Persuading the Administration to grant a holiday on Friday, the Committee set forth to make the Willamette Centennial May Weekend one of innovation. Three new events were added to the traditional activities. Work Morning for Campus Clean-up Crews, a picnic lunch and a floral parade. Titian-haired Queen Chloe and Princesses June and Cleo reigned graciously over the three days of festivities. Saturday afternoon was the high light of the weekend. Following the beautiful coronation of the Queen, "Ballad for Americans" by the choir and the traditional Maypole dance, thrilled the throng of parents, high school guests and students.



Winding the Maypole.

... and the rains came."





Lausanne wheels home a winner.



Queen Chloe, enthroned.



The Winning Float . . . another first for the Frosh.



Sophomore Float.



Traditional Friday nite dance.

REMEMBER PEARL HARBOR

Remember it? How could we forget it? How could we forget the day that we all tramped down to the local depot to see our gridders off on their memorable trip? How could we forget our anxiety and worry when the first news of the bombing reached our ears? How could we forget our joy when, at our homes for Christmas vacation, we heard that our Bearcats were to arrive in Salem on Christmas day after a perilous journey through submarine infested waters?

Scarcely eight hours after the close of the Willamette U-Hawaiian grid battle our country was at war. It was the very next morning that the treacherous Japanese launched their never-to-be-forgotten attack on Pearl Harbor, and it was then that the Bearcats won their "big" game of the year, the grim game of war. The entire team went on guard duty. After two tense weeks they secured passage back on a hospital ship. Our players performed so heroically in the care of the sick that Secretary of the Navy Frank Knox, in a letter to Dr. Knopf, commended them unreservedly for the services they rendered aboard the President Coolidge.



The Willamette gridders before leaving for their invasion of the Hawaiian Islands.



Captain-elect Ted Ogdahl and Coach Keene.



Co-captain Reynolds.



Mr. and Mrs. Ervin Miller



A rousing send-off with the aid of the Bearcat band.



In Honolulu Mrs. Keene, "Spec", and Senator Douglas McKay are welcomed by Shriners, sponsors of the Willamette-Hawaiian game.



The Bearcats just before they rolled into Salem to end a four thousand mile, action-filled trip.



THE HISTORY of Willamette didn't start in 1842 any more than American history started with the signing of the Declaration of Independence. Let us turn back the leaves of history to New England and the year 1833. In July of

that year Jason Lee was ordained a minister and authorized to establish in the Oregon territory a gospel mission. So Jason and his nephew, Daniel, seeing a vision of rejuvenated Indians in a promised land, made in 1834 the trip to the Oregon country, which then included all of Oregon, Washington, Idaho, and much of Montana. They chose a site on the banks of the beautiful Willamette river, ten miles below the spot where Salem now stands. There were no white children on all the Pacific slope of the continent of North America, and very few white men at the time Jason Lee sought to fulfill his mission. But he gathered together some dozens of Indian children in a little log school-house, establishing the "Oregon Mission Manual Labor School." In 1838 Lee returned east and talked the fathers out of \$42,000, the largest mission grant in the history of that society to date. But more important was the company of thirty-six adult persons that he persuaded to accompany him back to Oregon on the ship *Lausanne*. This large mission reinforcement and their children comprised the first families of Salem, being intimately connected with the growth of the state of Oregon.

We claim 1842 as the date from which Willamette's history is dated because in February of that year the foremost people in Oregon met, drew up a charter, and organized into a board of trustees for a school which did not exist—but whose necessity was serious. No public schools had been established for the numerous white children and youth. The educational demands of this infant though rising colony were becoming more pressing as immigrants from the Eastern states began to settle. The organizers of the Indian Mission took the lead. Rev. Jason Lee presided over a meeting on the first day of February in which it was resolved to establish a collegiate institution for the benefit of the rising generation of Oregon. "The Oregon Institute" was the name selected for the school.



ACTIVITIES

Left to right: Professor Sparks, Arthur Wilson, Wallulah editor; June Woldt, senior representative; Marge Waters, first vice president; Ralph May, president ASWU; Chloe Anderson, secretary; Sumner Gallaher, second vice president; Dr. Thompson; Ralph Schlesinger, publications manager; Richard Wicks, freshman representative; Hale Tabor, Collegian editor; Bob Perry, sophomore representative; Bob DeArmond, law school president. Missing is Clarence Wicks, junior representative.



STUDENT EXECUTIVES

Despite uncertainties caused by the war, the executive council has concentrated on building a unity among the students this year through entertaining assemblies and cooperative work days. In the course of their monthly meetings lengthy discussions took place concerning the pros and cons of every important move made by their group or the student body as a whole. Highlights of ASWU activities have been Friday chapels, exchange programs with Linfield, Pacific University, and Pacific College, distribution of Christmas baskets collected by Willamette students, and a Santa Claus assembly.

All of the outstanding occasions of the year, Homecoming, the Centennial Ball, Freshman Glee, and May Week-end were supervised by members of the executive council.

Sun Valley, Idaho played host in late April to the Pacific Coast Presidents' Association conference which was attended by the retiring president Ralph May, and president-elect Bob Hamilton. Eight members of the council attended the Oregon State Federation of College Leaders' convention at Oregon State College, in Corvallis, October 31 and November 1. The Willamette delegates exchanged information concerning student-body activities and organization and problems relative to student government with 150 other college leaders at the conclave. The outstanding impression gained was that Willamette is not such a bad place at all—that our school has the best set-up for student government and carrying on of student affairs of any Oregon school of higher education. The trip opened the eyes of ASWU leaders to the beauties of Willamette life.



Ralph May, president of the Associated Students of Willamette University.



ASWU COMMITTEES



Constitutional Revision committee—left to right: Loren Hicks, Ray McIlvanna, Winfield Achor, and Chairman Juse Woldt.

Constitutional Revision committee, during the year, presented four amendments to the student body with recommendation that they pass. These concerned forensic awards, use of part of the student body funds by the drama department, appointment rather than election of the yell king and song queen, and change of Honor Code committee appointments to spring rather than fall. Each amendment obtained the required two-thirds vote of the student body and became a part of the ASWU Constitution.

Honor Code committee—left to right: Dick Stucer, Dick Kern, Emma Lou East, Richard Wicks, Chairman Claude Barrick, Peter Famouso, Miriam Jensen, Eleanor Todd.

Honor Code committee has as its purpose the perpetuation of the spirit of honor cherished at Willamette and the enforcement of rules and ethics set forth in the student honor code. A constitutional amendment, passed this spring, moved up the time of appointment of this committee from October to the first meeting of the new executive council in the spring. Thus, the committee can impress upon the freshmen Willamette's tradition of honor and scholarship immediately upon the opening of school.



Library committee has as its primary purpose the maintenance of order in the library. There has not been much trouble with discipline this year however, probably because, as Librarian Robinson Spencer says, "There aren't as many boys around any more." This committee endeavors, also, to create wider student interest in new books.

Library committee—left to right: June Woldt, Gayle Denison, Esther Mae Devore, Lois Gladden, Robinson Spencer.

PUBLICATIONS BOARD

The appointment of Ralph Schlesinger as publications manager, and the permission to issue thirty *Collegians* this year were the most important accomplishments of the publications' board in its first year of existence, in the opinion of Hale Tabor, president of the board.

The board was created at the end of the 1941 school year, as the result of a constitutional amendment, to serve as a directing force to build up the *Collegian* and *Wallulab* staffs, to appoint editors for the *Handbook* and the *Fussers' Guide*, and to nominate the candidates best qualified for publications manager and editorship of the *Collegian* and the *Wallulab* for final selection by the associated student body. Ralph Schlesinger, Hale Tabor and Art Wilson were the first to be elected under this system, and their successful year as publications' heads has proved the efficiency of the plan.

Creation of the board and of one publications manager to serve as business and advertising manager of both the *Collegian* and the *Wallulab* has brought about more unity between the two staffs and has done away with the competition of the two in the field of advertising. It gives the merchant a chance to buy advertising in Willamette's student publications from a single representative.

Salaries, policies and budgets are set by the board at regular meetings, where problems that ordinarily confront editors singly are taken care of by the board as a whole.

The board is composed of seven members. Hale Tabor, *Collegian* editor, is president, and Ralph Schlesinger is publications' manager. Other student members include Art Wilson, *Wallulab* editor; Ralph May, student body president; Chloe Anderson, student body secretary and secretary of the board. Lestle J. Sparks, graduate manager, and Murco Ringnald, professor of journalism, are ex-officio members.



Professor Ringnald, Professor Sparks, Chloe Anderson, Chairman Hale Tabor, Art Wilson, Ralph Schlesinger. Missing is Ralph May.

COLLEGIAN STAFF

Grace Cramer
Nadene Mathews
Dir Moser
Ruth Matthews
Gil Lieser
Charlotte Woodward



WILLAMETTE COLLEGIAN

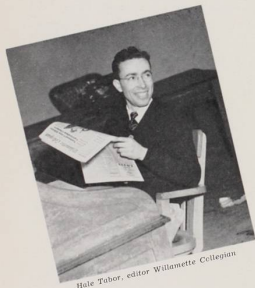
A modern five-column, eight-page tabloid *Collegian* greeted freshmen as they registered for the first time at Old Willamette. Not only was the streamlined format new—it was the earliest publication of the 52 year old student newspaper.

Nor did the *Collegian* stop with that. Following the path laid down by the 1940-41 All-American *Collegian*, this year's paper blazed a trail of news scoops, interpretative news stories, numerous pictures and sly humor. Among the outstanding scoops were stories revealing the identity of the Century Girl and telling of the reinstatement of compulsory chapel. The latter story appeared even before administrative heads, excepting Dr. Knopf, were aware of what was happening.

A humorous treatment of alleged trash-dumping by members of a fraternity which appeared on the front page of the school paper was taken as an admission of guilt by a local newspaper which censured the fratmen and school alike with news story and editorial.

Under the able direction of "The Triumvirate," Hale Tabor, editor, Dix Moser, news editor, and Ruth Matthews, copy editor, the staff of the *Collegian* provided a more complete coverage of campus activities than was ever before accomplished.

When war burst upon the country bringing the twin problems of rising costs and falling revenue, the *Collegian* dedicated itself to a policy of "no retrenchment" and attempted to insure the publication of 30 issues—largest number of issues published during a Willamette school year—with marked success.



Hale Tabor, editor Willamette Collegian

What is a yearbook? To you: it is a history of one year's activity at Willamette, completely told in picture and story, and durably bound in permanent form. To an editor and his staff: it is by far the most important institution on the campus. In fact, to us, the whole "raison-d'etre" of our century-old Willamette is to provide stuff for our yearbook.

1942 WALLULAH

We hope it is as clever as *Esquire*, as appealing as *Life*, and as complete as *Time*. But our single great aspiration is that in years to come you may glance often in this book to recall the fun and frolic, the woes and work, the hims and hers of this unequalled school year.

This has been a *Wallulah* of innovations. For the first time in history a complete lithograph section was used. Formality bit the dust as an effort was made to avoid the "Sunday best" appearances of students. Although we recognized Willamette's one hundredth anniversary with the theme "Centennial," care was taken to prevent the theme from dominating the contents to the exclusion of the students and their activities.

This has been an outstanding year; we hope you think it is an outstanding yearbook.



Arthur Wilson, editor 1942 Wallulah



Wallulah editorial staff includes: Marjory Maulding, Eleanor Todd, Ruth Finney, Miriam Jensen, Kay Wilson, Al Barrett, Lois Phillips.



PUBLICATIONS MANAGER

Doubling the amount of advertising in Willamette student publications was no easy proposition. Interference of the war made it particularly difficult, but Ralph Schlesinger, genial and efficient publications' manager, thought it could be done, and he did it! In previous years, *The Collegian* and the *Wallulab* each had an advertising manager, but with the creation of the publications board and the position of publications manager, Schlesinger was made business and advertising manager for both publications. He alone was more successful at the job than any two men have been in the past. Under his management, there is more efficiency at a lower cost, thus making it possible to put more money back into publications.

A staff of four assistants worked with Schlesinger this year on the problems of advertising and correspondence, two of them serving as assistant business managers. Quiet James Garson sold advertising for *The Collegian*, and the Sig Redhead, Jerry Anderson, was the assistant business manager who helped sell advertising for the *Wallulab*. Bob Blanding, senior news bureau man, worked on the sale of *Wallulabs*. Capable Nadene Mathews served as secretary to the publications manager.



Ralph Schlesinger, publications manager



Publications manager's staff includes: Robert Blanding, Jerry Anderson, James Garson, Nadene Mathews.

STUDENT HANDBOOK

In addition to giving the "W" club members a good chance to haul unsuspecting freshmen into Kangaroo court if they were caught without their Frosh Bibles, the little 'Rook Books' proved their worth in acquainting freshmen and other new students, with the traditions of old Willamette.

Required to carry them during initiation week, the freshmen frequently looked beneath the cover to learn school songs, yells, officers, organizations, and sorority and fraternity rushing rules. Another page found helpful by the freshmen was that listing the Freshman Ten Commandments.

The Bible, or student handbook, was edited by Mary Jo Geiser and published by the Associated Student Body. A new feature of the book this year was pages graduated in width and an index to the various student organizations and activities.



Mary Jo Geiser

FUSSER'S GUIDE

The "Fusser's Guide" surprised Willamette men and women this year by a rapid succession of 'firsts.' It was the first time the Guide was out that early in the year (October 23). It was the first time a professional artist of national fame did the art work. It was the first time the names of the men and women were alphabetized separately. It was the first time the social calendar for the fall term was listed in its entirety in the front of the book.

Ruth Matthews as editor was responsible for the success of this year's novel Guide, and it was she who secured Byron Randall to make the clever linoleum cuts interpreting college social life.

The Guide lists not only the social calendar and the addresses and phone numbers of students, but it includes the faculty and University offices as well.



Ruth Matthews





Senior scholars Dick Barton and Marge Waters load up Dr. Rahe with this year's winnings.

FORENSICS

Willamette forensics are not a century old but they record a colorful history of sixty years. It was in 1880 that the evening meetings of the Philodorian (for men) and the Philodorian (for women) literary societies began. Miss Elizabeth Luse taught "public speaking" then and one of the promising young speakers of the societies was I. H. Van Winkle.

In 1904-5 two other societies, the Adelante for women and Websterian for men, formed to debate and give orations. Somewhere in the past a specific department of forensics began. Now hanging in Dr. Herbert H. Rohe's office is the certificate showing the founding of Willamette's speech honorary, the local chapter of Tau Kappa Alpha, in 1926.

Dr. Rahe came in 1929, a date which marks the beginning of great things for Willamette forensics.

Each year has climaxed the last in recognition and achievement and 1942 is no exception. This year the forensic teams won eight first places, eleven second places, and sixty out of eighty debates during the Centennial year. For the third successive year WU women tied for second place in the Western Association debate.

First place winners this year are Barbara Hathaway, freshman, state after-dinner speaking, inter-class interpretation; Glenn Olds, senior, \$15 prize, state extempore; Darlene Dickson, sophomore, Junior women's oratory; Harold Adams, junior, CPS direct clash debate; Wade Bettis, sophomore, and Charles Roberts, freshman, Western Association debate winners; and Bettis, CPS extempore, Roberts, CPS impromptu. An outstanding winner is Wallace McCall, freshman, who won a National Extempore discussion with all expenses paid to Salt Lake City for further competition and possible trip to Washington, D.C. and South America.





THEY DEBATE

The speech squad's diary included such topics as: "Women in National Defense," "Uncle Sam . . . Self-sufficient?," "American Nostalgia," "Resolved: that the federal government should regulate by law all labor unions in the United States," "You in Your Small Hemisphere and I in Mine," "Women and Propaganda in National Defense," "The Pause that Refreshes," "Pan-American Cooperation," and "Women and/or the War."

Senior scholar in speech, Marjorie Waters, was elected to presidency of the Intercollegiate Forensic Association of Oregon. Senior scholar Dick Barton has actively aided student productions with recordings and use of the speech department's radio equipment.

The squad attended four speech meetings: Western Association tournament at Ogden, Utah, Northwest tournament at Linfield college, College of Puget Sound tourney, and the Pacific Forensic League conference. A total of \$45 was won by contestants plus University award made at commencement. The squad added five cups to Willamette's trophies, one from Ogden, three from College of Puget Sound, and one from Linfield.

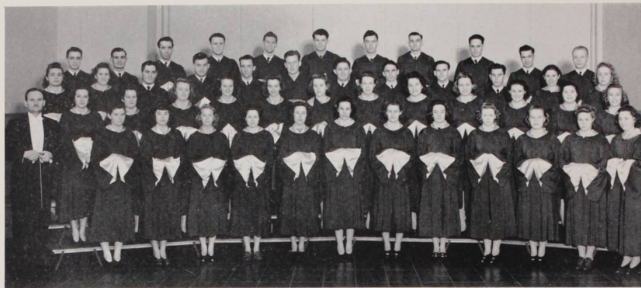
"In spite of the war, 1941-42 has been one of the most successful forensic years since I came here," said Dr. Rahe.



Forensic squad: Front row—Bielke, Oye, Hathaway, Thomas; second row—Long, Dickson, Bettis, Wicks; third row—May, Olds, Adams.



Tournament winners Don Burton, Wade Bettis, Barbara Hathaway, and Darlene Dickson display their trophies.



A Centennial program, a concert trip, and an active part in University life this year fill the memories of Willamette's a cappella choir members.

An extended trip April 6-14 took the 44-voice choir as far east as Boise, Idaho, to present numbers from the outstanding schools of a cappella literature at colleges, high schools, and churches throughout Oregon and Idaho, and on radio broadcasts in Oregon City, La Grande, and Meridian, Idaho. Solos, a male quartet, and special feature numbers were a part of every program.

As a part of the Centennial celebration, the choir opened National Music Week with a program of sacred and secular numbers, spirituals and school songs at Salem high school May 3.

Regular appearances at chapel and singing for Freshman Glee, the Institute of Citizenship, the high school tournament and special programs, were a part of the choir's activity during the year.

In spite of the war and its effect upon the enrollment the choir is the best yet at Willamette from the standpoint of quality of voices and balance of parts, in the opinion of Melvin H. Geist, dean of the music school and director of the choir.

A CAPPELLA CHOIR

BEARCAT BAND



Flashing formations with lights on a darkened field, winning honors in marching, and setting the mood for Willamette's victory at the Homecoming game with College of Puget Sound on November 7 are outstanding achievements of the Bearcat Band this year. The tricky maneuvers at the CPS game featured a large lighted "V" formed while playing the Victory Motive from Beethoven's Fifth Symphony, a "100" in celebration of the Centennial, a revolving baton of lights as a background for a show by the four drum majorettes, a "CPS" and a "W." This was the climax to the first season in which the band performed at every home football game. During basketball games also the tooters kept spirit high with rousing selections.

The band attracted state-wide attention in March by performing for Oregon high school juniors, instructors and state officials attending the Institute of Citizenship on the Willamette campus in March. Salem, too, is Bearcat Band conscious, for a brass quartet of band members was active playing for civic groups this year.

At three concerts band members displayed their technique and the well-balanced instrumentation of the band by playing a variety of heavy and light music, school songs arranged by Carl Bowman, and special arrangements by band director Maurice Brennen.



“THE YELLOW JACKET”

The height of collegiate dramatics success greeted the Homecoming play, “The Yellow Jacket,” when several of its patent phrases became campus household words. Say “I bow” with a nasal Oriental twang or “second-hand sandwiches for sale, cheap!” and you’ll recall to the minds of many the hilarious traditional Chinese comedy.

Characteristic of the Chinese theatre were the minimum of stage setting complemented by luxurious costumes, fantastic make-up, exaggerated pantomime and obvious properties. Characteristic, too, were the theatrical walks affected by the male members of the cast.

The Markee twins really made the show. Kent cooperated with himself to be the chorus while Keith as the indifferent property man detailed the real work to his moronic assistant, Dix Moser.



There may be something in this blond Chinaman idea for the real beauty in the play was in the persons of the fair leads. Wu Hoo Git, the hero who conquered mountains, was played by Corydon Blodgett, and Moy Fah Loy, the beautiful Peach Blossoms, was played by Lois Phillips.

The production staff for the play, which was given in the Leslie auditorium, included Ralph Schlesinger, manager; Margaret Sehon, properties; Jane Patton, costumes; and Joan DuRette, stage. Mrs. Margaret Ringnalda directed the Chinese drama.

Befitting the final dramatic production of the Centennial year the May Weekend play was a Western drama, "Distant Drums," by Dan Totheroh. Mrs. Margaret Ringnald directed. Ralph Schlesinger was the manager and Helen Jones, Corydon Blodgett, Wade Bettis and Wes McWain played the leading roles. It was presented in Leslie junior high auditorium May 2.

The story was in the dramatic setting of a pioneer train of covered wagons heading overland for the Oregon Institute of Jason Lee. Indians, disease, and heartbreak are but a few of their hardships. The monotonous beating of the Indian drums tie the drama together as a thrilling motif. In the role of Eunice, the wife of the leader, Helen Jones saves the outfit with herself as a living sacrifice to the Indians.



A note of realism was contributed by the old-time muskets from the Willamette museum and the authentic pioneer costumes loaned by the townspeople. Also contributing to the effectiveness of the play was the set, consisting of covered wagons and a pioneer camping spot and the frontier equipment and beards used by the cast. The families of pioneers fit into this romantic background like shades and patterns of an intricate design.



'DISTANT DRUMS'



IN 1844 the Indian Manual training school gave up; a fatal disease had gained a foothold among the Indians and many died, while many of the others went back to their savage homes.

The building, a ten thousand dollar, three-story structure built in 1841 near where the gymnasium now stands, was sold to the trustees of the Oregon Institute for \$4,000. And in 1844 the doors were opened to the first class.

From 1844 to 1853 the Oregon Institute suffered distinct growing pains. It reared its students from the cradle up. In 1853 Willamet, as it was then known, was granted its legal charter—its citizenship papers. In 1859 it had its first graduate, Emily York. In that year Oregon became a state. Salem had grown from a mission settlement to a thriving town; it had survived the California gold rush, acquired a stagecoach line, a courthouse, a capitol building, and a hook and ladder fire brigade. And Willamette had a campus with grass that was knee high, dotted with apple trees, and surrounded by a rail fence to keep the cattle out.

By 1860 age and decay had seriously weakened the old "Institute" building. Winter winds shook the structure from the foundation up; rains, beating down, trickled and then poured through the worn shingles. The thoroughly dilapidated condition of the old building forced either the erection of a new college edifice or the abandonment of the University. Reverend A. F. Waller entered into the tedious task of raising the required funds and on July 24, 1864, the cornerstone was laid. Three years later the student body marched from the old Institute Building into the new "Waller Hall."



THE UNIVERSITY



CARL SUMNER KNOPF
*President of
Willamette University*

President CARL SUMNER KNOPF, since his coming to Willamette less than a year ago, has brought the University inspiration and new clarity of vision. His scholarly manner, friendly bearing, reverent attitude, sincerity of purpose, and ready cooperation are qualities which at once inspire confidence and goodwill.

Dr. Knopf, the man who makes the Bible live, came to Willamette from U.S.C. with a versatile background as lecturer, teacher, author, and archeologist. He began as assistant professor at U.S.C., then went to Fullerton College as psychology professor, was secretary of the San Francisco area of the Methodist church, professor of archeology at U.S.C., dean of the school of religion there and chaplain of the University. He has written numerous books, articles and pamphlets, and belongs to more worthwhile organizations than could be crowded onto a page of writing.

Not long after his arrival at Willamette, students were amazed to see Dr. Knopf out in front of the new maintenance building, dressed in a pair of workmen's overalls, energetically wielding a rake and wheelbarrow and thoroughly enjoying himself. Definitely Dr. Knopf is a doer as well as a thinker.

With a store of knowledge, mountain-high and steadily growing, a definite philosophy and aim in life, Dr. Knopf has a mission and a message slowly but surely hitting its mark at Willamette.



Paul R. Wallace continued this year his duties as president of Willamette's Board of Trustees. Upon the Board rests the responsibilities of determining and maintaining the policies of the university and voting upon faculty members and appropriations. Regular sessions are held twice a year, and the executive committee of nine members meets each month to carry on current business.



R. Franklin Thompson, as vice president of Willamette, has proved himself well endowed with the versatility, enthusiasm, and tireless energy which this new position demands. To him this year have fallen the duties of contacting numerous high schools and business men, giving over three hundred speeches, and working in the reorganization of the alumni set-up. Yet he has found time, as Dean of Freshmen, to carry on a successful program of counseling and guidance.



Chester S. Luther, as Dean of Willamette, assumes the position of coordinator for the activities of the entire university. Thus he represents the interests of the faculty and students to the President and Board of Trustees, formulates and coordinates the curriculum, and establishes and maintains the standards of scholarship. His duties include, also, passing on the eligibility of students to participate in activities, and the handling of certain loan funds.



Helen Pearce, with the aid of an excellent executive committee, has lead the Willamette Alumni Association to a successful year. The group has this year seen the beginnings of a re-organization which will bring its work into a closer relationship with the university itself. Entering into the spirit of the centennial year, the association cooperated with Willamette in various projects, and included the entire university in its annual alumni banquet at commencement.

Daniel H. Schulze's quiet understanding and keen sense of humor serve him well in his duties as Dean of Men. Always available for personal conferences, he is active in helping Willamette men to find housing and jobs, and holds the position of advisor for the inter-fraternity council.

Olive M. Dahl, as Dean of Women, finds herself one of the busiest persons on the campus. Besides arranging for a personal interview with each coed during the year, she works with the campus social committee in planning the social calendar and acts as advisor to the inter-sorority council.

Lestle J. Sparks is justly famous among students for his colorful campus movies. His more official duties, however, include supervision of the student finance system, looking after athletic funds, and planning seating arrangements for May Day and Freshman Glee.

N. S. Savage, business secretary, is a familiar figure around tuition time, when his understanding of student financial problems is duly appreciated. His are the duties of handling all tuition and fees, as well as administration and endowment funds, for the university.

Mrs. George Abbott, secretary to Dean Luther and director of Willamette's placement bureau, serves as link between the prospective teacher and the high schools of the state. Her duties include notifying students of available jobs, sending out credentials, and arranging for interviews.

Walter Erickson, friendly and enthusiastic, supplies prospective students with first-hand information on Willamette. To him, fall, also, the difficult jobs of registering students each semester, and aiding in the publication of the annual university catalogue.

Frances Harris is at once a co-ed and an efficient member of the Willamette staff, serving as secretary to the registrar and recorder for the university. Her duties in the office of recorder include custody of all scholastic records, grade reports and transcripts.

Charlotte Kallander has been a third hand to Dr. Knopf in her capacity of secretary to the president. Her efficient handling of appointments and her skilled direction of her staff have been important factors in the smooth running of the president's office.





H. CLIFTON HUTCHINS
Ph.D.
Professor of Education

LORENA N. JACK
M.Sc.
Instructor in
Home Economics

CHARLES H. JOHNSON
Ph.D.
Professor of Chemistry

GRAYDON K. ANDERSON
A.B.
Instructor in Economics

WILLAMETTE

MAURICE WILLIAM BRENNEN
M.M.
Instructor of Instrumental Music

EARL THEODORE BROWN
M.S.
Professor of Physics

W. W. HERMAN CLARK
A.M.
Associate Professor of
Physical Science

ALIDA GALE CURREY
A.M.
Associate Professor of
Physical Education

OLIVE M. DAHL
A.M.
Dean of Women
Associate Professor of German

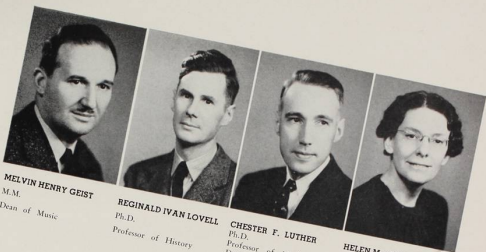
MARY SCHULTZ DUNCAN
Instructor in Violin

CLARA ENESS
M.M.
Professor of Piano and Theory

CONSTANCE FOWLER
M.F.A.
Instructor in Art

ROBERT MOULTON GATKE
B.D., Ph.D.
Professor of Political Science and
History





MELVIN HENRY GEIST
M.M.
Dean of Music

REGINALD IVAN LOVELL
Ph.D.
Professor of History

CHESTER F. LUTHER
Ph.D.
Professor of Mathematics
Dean of the College of
Liberal Arts

HELEN MacHIRRON
B.M.
Instructor in Piano,
Organ, and Theory

FACULTY



JOEL W. C. HARPER
A.M.
Professor of Economics and
Business Administration

CHARLES CHAWNER HAWORTH
A.B.
Instructor in Spanish

ROY SERVIAS KEENE
B.S.
Director of Athletics
Professor of Physical Education



HENRY CHARLES KOHLER
Ph.D.
Professor of English Literature

ROBERT E. LANTZ
A.M.
Assistant Professor of Education

LOIS E. LATIMER
A.M.
Professor of Home Economics



SCEVA BRIGHT LAUGHLIN
Ph.D.
Professor of Sociology and
Anthropology

CECIL RAY MONK
A.M.
Associate Professor of Biology

MARION MORANGE
A.M.
Assistant Professor of French



KENNETH McLEOD
Ph.D.
Instructor in Chemistry

HOWARD MAPLE
B.S.
Basketball Coach
Assistant Football Coach

JAMES T. MATTHEWS
A.M., D.Sc.
Professor of Mathematics

HERBERT EDGAR RAHE
Ph.D.
Professor of Speech

WILLAMETTE

MURCO RINGNALDA
A.M.
Assistant Professor of English

MARGARET B. RINGNALDA
A.B., A.M.
Dramatics Coach

THOMAS S. ROBERTS
Instructor in Pipe Organ

DANIEL HENRY SCHULTZ
Ph.D.
Dean of Men
Professor of Bible and Religion

CHARLES LESTER SHERMAN
Ph.D., Ph.D.
Professor of Philosophy and
Psychology

DOROTHY McDONALD SHINN
A.B., B.L.S.
Assistant Librarian

LESTLE JESSE SPARKS
A.M.
Associate Professor of Physical
Education

ROBINSON SPENCER
B.L.S.
Librarian

EARLE K. STEWART
A.M.
Instructor in History





IVAN B. RHODES
B.S.
Lecturer in Y.M.C.A.
Courses

EGBERT S. OLIVER
Ph.D.
Associate Professor of
English

BERNICE ORWIG
A.B.
Instructor of Biology

HELEN PEARCE
Ph.D.
Associate Professor of
English

FACULTY



ROBERT FRANKLIN THOMPSON
Ph.D.
Dean of Freshmen
Professor of the Classics
Vice-President of the University

ROBERT H. TSCHUDY
Ph.D.
Assistant Professor of Biology

ALEXANDER A. VAZAKAS
Ph.D.
Professor of Modern Languages
and Comparative Literature

CLAIRE M. INMAN
LL.B.
Professor of Law

ROY M. LOCKENOUR
J.D.
Professor of Law

GEORGE MCLEOD
A.B., LL.B.
Acting Dean of Law School

RAY L. SMITH
A.B., LL.B.
Professor of Law

THOMAS J. PICKETT
A.B., LL.B.
Law Librarian
Assistant Professor of Law



Achor, R. Winfield
 Barker, Mary
 Barrick, Claude
 Barton, Richard
 Burrell, Alice
 Chirgwin, Helen

Cramer, Ruth
 Devore, Esther Mae
 Evans, William
 Gilmore, Jesse
 Griffith, Gwen
 Hamilton, Elizabeth

Hermanek, Marion
 Hicks, Loren
 Kreutz, Maurice
 Marcy, Bernice
 May, Ralph
 Morgan, Madeline

Moore, Dorothy
 Morris, Anne
 Neiz, Dolores
 Jones, Helen
 Sarris, Luree
 Olds, Glenn

Pentney, Robert
 Purbrick, Robert
 Reeder, Marion
 Sanders, Marie
 Stewart, Cliff
 Stewart, Eugene

Thompson, Madge
 Van Winkle, Joe
 Voigt, Robert
 Waters, Marjorie

SENIOR SCHOLARS

In the words of one senior scholar, "I felt it a supreme honor when I was asked to serve as senior scholar this year. The experience has proved invaluable. The responsibility of the position has given me assurance and self-confidence, and the intimate relationship with the professor and the students has been delightful."

At the end of their junior year at Willamette, students who have proved themselves outstanding in their fields are chosen by their major professors to serve as assistants during their senior year. Limited credit is given them for their work which includes making special studies of teaching methods, correcting notebooks, and examining and criticizing students' papers. A few of the scholars assist in teaching classes and instructing laboratories.

Choice of senior scholars is based upon their scholarship, their fitness, and their ability to profit by the experience the opportunity offers.

SENIORS

More than ever aware of its distinctive position in Willamette's history, the centennial class of 1942 climaxed this year an eventful four-year career. Notable since its entrance for record size, boundless enthusiasm, and surprising originality, the class further proved its abilities by carrying on a highly successful senior year in spite of world conditions which depleted its membership and curtailed many of its activities and privileges.

The seniors achieved distinction at Freshman Glee when, making good use of past experience, Marian Hermanek's song, and Loren Hick's management, they walked off with top honors. They rated considerable publicity at Oral and Comprehensive time, when they petitioned the faculty for a special week of study to compensate the spring vacation they had lost, and succeeded in extracting two "reading days." May Day, of special significance during this centennial year, found them justly proud of their titian-haired queen and her two stately princesses.

Looking now toward the experiences which await them after commencement, the members of the class of 1942 exhibit the same confidence and enthusiasm which served them so well in the task of winding up Willamette's first century.



First semester officers: Orville Ragsdale, president; Nadine Orcutt, secretary; Bob Voigt, treasurer; Cito Swenson, vice president.



Second semester officers: Mary Barker, secretary; Marion Hermanek, vice president; Bob Voigt, president; Bob Duppitt, treasurer.



**HELEN J.
ACHESON**

Chemistry
Boise, Idaho

**RICHARD W.
ACHOR**

Biology
Oregon City, Ore.

**R. WINFIELD
ACHOR**

Public Ad.
Oregon City, Ore.

**BARBARA
COMPTON**

Speech-English
Salem, Ore.

**MACARIO T.
CORPUZ**

Sociology
Lu Union,
Philippine Islands

**GRACE
COVERT**

History
Salem, Ore.

**CHLOE E.
ANDERSON**

Bus. Administration
Salem, Ore.

**MARGARET L.
ANDERSON**

French
Portland, Ore.

**LEO E.
BALDWIN**

Sociology
Fort Shaw, Mont.

**GRACE A.
CRAMER**

History
Salem, Ore.

**RUTH A.
CRAMER**

German
Salem, Ore.

**JUANITA
CULLEN**

English
Fort Lewis, Wash.

**MARY L.
BARKER**

English Literature
Salem, Ore.

**CLAUDE W.
BARRICK**

Biology
Tillamook, Ore.

**RICHARD P.
BARTON**

Speech
Salem, Ore.

**BOB
DAGGETT**

History
St. Helens, Ore.

**ROBERT Y.
DEAN**

Mathematics
Woodburn, Ore.

**ESTHER MAE
DEVORE**

Sociology
Salem, Ore.

**ROBERT P.
BLANDING**

Bus. Administration
Portland, Ore.

**CORYDON M.
BLODGETT**

Speech-Dramatics
Salem, Ore.

**LOUIS
BONNEY**

Political Science
Tillamook, Ore.

**FRANCIS
DILLON**

English
Portland, Ore.

**LARRY J.
DRURY**

Bus. Administration
Newark, N. J.

**MALCOLM A.
DUNBAR**

Biology
Easton, Wash.

**CARL
BOWMAN**

Music
Salem, Ore.

**BETTY F.
BOYDSTON**

English
Dallas, Ore.

**HILMA M.
BREUSER**

Sociology
Rainier, Ore.

**JOAN M.
DURETTE**

Speech
Gervais, Ore.

**CHARLOTTE D.
ELLINGSWORTH**

Political Science
Willamina, Ore.

**R. WILLIAM
ELMER**

Sociology
Canby, Ore.

**CAROLYN N.
BROWN**

Music
Salem, Ore.

**ALICE U.
BURRELL**

Home Economics
Salem, Ore.

**BARBARA
BYRNE**

Sociology
Ontario, Ore.

**WILLIAM H.
EVANS**

Chemistry, Physics,
Math.
Salem, Ore.

**MAURICE
FITZSIMONS**

Bus. Administration
Salem, Ore.

**SUMNER
GALLAHER**

Chemistry, Math.
Salem, Ore.

**HELEN M.
CHIRGWIN**

French
Medford, Ore.

**CAROL G.
CLARK**

French
Salem, Ore.

**CORLISS A.
CLARK**

Sociology
Salem, Ore.

**JOHN I.
GARDNER**

Sociology
Pinchurst, Idaho

**DOROTHY
GILLIS**

Music
Great Falls, Mont.

**JESSE L.
GILMORE**

History
Grants Pass, Ore.



LUANN GREEN

Sociology
Salem, Ore.

DOROTHEA GREENWOOD

Art
Salem, Ore.

GWENDOLYN M. GRIFFITH

Physical Education
Olympia, Wash.

BETTY MARIE KELLER

Public Ad.
Portland, Ore.

MAURICE KREUTZ

Physical Education
Hebo, Ore.

DORIS L. LANEY

Sociology
Yakima, Wash.

ESTHER N. GUNNESSDAL

Bus. Administration
Portland, Ore.

WAYNE E. HADLEY

Bus. Administration
Longview, Wash.

FOSTER M. HAGY

Chemistry
Salem, Ore.

AILEEN LA RAUT

Physical Education
Roseburg, Ore.

KENNETH E. LILLY

Bus. Administration
LaGrande, Ore.

HAZEL K. MAGEE

History
Salem, Ore.

TOM C. HALL

Sociology
Goldendale, Wash.

ELIZABETH A. HAMILTON

English
Seattle, Wash.

ARNOLD R. HARDMAN

English
Olympia, Wash.

BERNICE MARCY

Religion
Tacoma, Wash.

RALPH E. MAY

Political Science
Denver, Colorado

LUCILLE McINTYRE

History
Portland, Ore.

FRANCIS R. HARRIS

Classical Civilization
Spokane, Wash.

C. CARROLL HEIM

Chemistry
Redmond, Ore.

MARION HERMANEK

Music
The Dalles, Ore.

ROBERT McKOWN

Mathematics
Portland, Ore.

ROBERT MEALEY

Music
Salem, Ore.

BARBARA J. MINOR

English-Drama
Portland, Ore.

LOREN D. HICKS

Economics
Salem, Ore.

ALVIN L. HIEBERT

History
Salem, Ore.

CLIFFORD J. HILL

Biology
Salem, Ore.

BERTHA M. MITCHELL

Sociology
Turner, Ore.

JOHN E. MITCHELL

Philosophy-
Psychology
Turner, Ore.

DOROTHY P. MOORE

History
Portland, Ore.

BARBARA ANN HOLLINGWORTH

Public Ad.
Portland, Ore.

MAXINE F. HOLT

Art
Salem, Ore.

KENNETH HUNT

Sociology
Brooks, Ore.

GORDON H. MOORE

Bus. Administration
Salem, Ore.

LOIS MOORE

Social Science-
Journalism
Great Falls, Mont.

MADELINE R. MORGAN

Physical Education
Stayton, Ore.

GENE HUNTLEY

Economics
Salem, Ore.

HARRY S. IRVINE

Biology
Portland, Ore.

JAMES JORGENSEN

Biology
Jefferson, Ore.

ANNE MORRIS

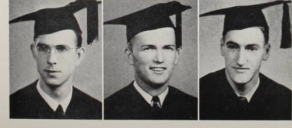
English
Cave Junction, Ore.

DELORES R. NETZ

Biology
Salem, Ore.

HELEN F. NEWLAND

English-Drama
Portland, Ore.



**RUTH LUREE
NORRIS**

French
Salem, Ore.

**GLENN A.
OLDS**

Philosophy-
Psychology
Sherwood, Ore.

**NADINE F.
ORCUTT**

Philosophy-
Psychology, Art
Salem, Ore.

**MARGARET A.
SEIGMUND**

Bus. Administration
Salem, Ore.

**ELIZABETH L.
SMITH**

English
Portland, Ore.

**CLIFFORD T.
STEWART**

Classical Civilization
Great Falls, Mont.

**HERMIE M.
PALMER**

English
Hermiston, Ore.

**JANE L.
PATTON**

English
Salem, Ore.

**ROBERT W.
PENTNEY**

Mathematics
Salem, Ore.

**EUGENE D.
STEWART**

Physical Education
Salem, Ore.

**HENRY R.
STOUDENMEYER**

Bus. Administration
Salem, Ore.

**CLEO NISSEN
SWENSON**

Bus. Administration
Albany, Ore.

**MAURICE E.
PERSONS**

Philosophy-
Psychology
Spokane, Wash.

**JOHN S.
POLLOCK**

Public Ad.
Salem, Ore.

**ROBERT W.
PRICE**

Bus. Administration
Salem, Ore.

**OSCAR L.
SWENSON**

Bus. Administration
Tacoma, Wash.

**HALE
TABOR**

History, Journalism
Glenrock, Wyo.

**MADGE E.
THOMPSON**

English
Palo Alto, Calif.

**ROBERT L.
PURBRICK**

Mathematics,
Physics
Salem, Ore.

**ORVILLE D.
RAGSDALE**

Bus. Administration
Salem, Ore.

**ARTHUR S.
RATHKEY**

Chemistry
Tacoma, Wash.

**DOUGLAS J.
TREIBER**

Sociology
Winlock, Wash.

**JOE
VAN WINKLE**

Political Science
Hubbard, Ore.

**BRUCE
VAN WYNGARDEN**

Bus. Administration
Salem, Ore.

**NELLE
REEDER**

Spanish
Waldport, Ore.

**DAVID
REINHARD**

Political Science
Portland, Ore.

**BUD E.
REYNOLDS**

Political Science
Salem, Ore.

**BOB W.
VOIGT**

Art
Salem, Ore.

**JACK
WALKER**

Political Science
McMinnville, Ore.

**WARD E.
WALKER**

Public Ad.
Portland, Ore.

**JIMMY G.
ROBERTSON**

Bus. Administration
Albany, Ore.

**MARY ELIZABETH
ROSS**

History
Salem, Ore.

**MARION
SANDERS**

English
Portland, Ore.

**MARK E.
WALTZ**

Music
Forest Grove, Ore.

**MARJORIE Z.
WATERS**

Speech
Salem, Ore.

**CECIL W.
WICKLINE**

Philosophy-
Psychology
Warrenton, Ore.

**HAROLD
SCHOOLEY**

Chemistry
Salem, Ore.

**CARL C.
SEIBEL**

History
Oregon City, Ore.

**KEITH
SHERMAN**

History
Whitefish, Mont.

**G. GLEN
WILLIAMS**

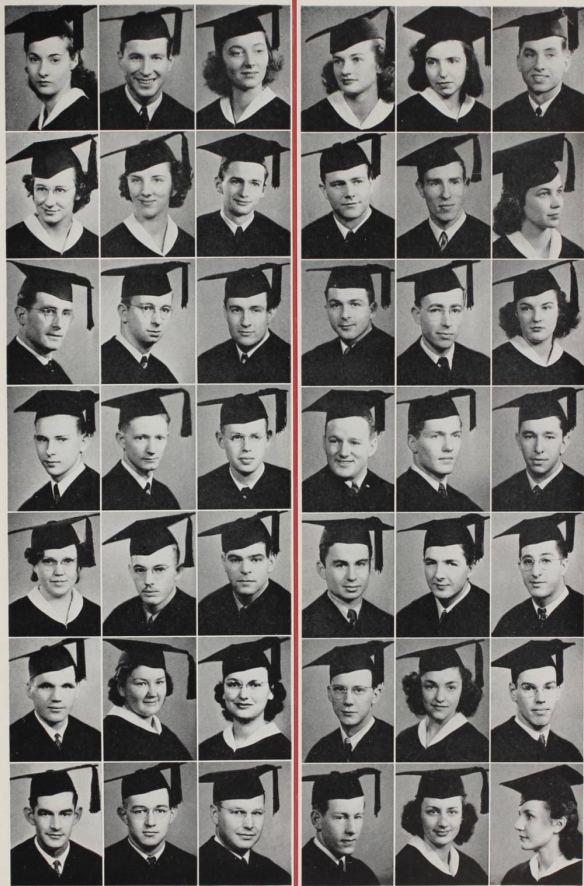
English
Salem, Ore.

**JUNE E.
WOLDT**

Sociology
Portland, Ore.

**BEATRICE A.
ZWEMKE**

Music
North Dakota



SENIOR



Chloe

Picture red hair, green eyes, a turned up nose and a dazzling smile—is it real? Certainly, it's Chloe Anderson, secretary of the Willamette student body, graceful queen of the May court, and a Delta Phi.



Glenn

Glenn Olds is an all round fellow, scholar (senior scholar in psychology), athlete (member of the varsity tennis team), student preacher, a true friend and a gentleman. And most of all, potentialities. We predict big things, Glenn.

We groan at Ralph May's fragrant jokes but we're putty to his plans when he grins; that's why as student body president he's accomplished so much this year. Student body-ly speaking it's been a tough year but Ralph's handled it and we're proud of him.

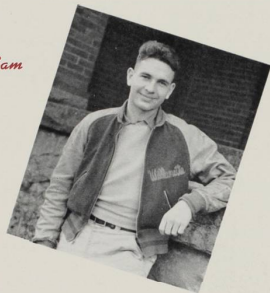
Ralph



STANDOUTS

Sumner Gallaher's a straightshooter in basketball as in elections. As one of those surprising Bearcats of ours and as second vice president of the student body he's had opportunity to prove himself and well. His major is mathematics and he's from Salem.

Sam



Marge

Remember any of the student body fun of the past year and you're indirectly paying a tribute to the little lady largely responsible. As vice-president of the student body Marge Waters has provided many happy hours for us all. She's one of Dr. Rahe's all-star speech majors.

June



Rags



June Woldt is a transfer from Albany; she's tall, dark and charming; the May court claims her as do the Delta Phiis, the executive council and Lausanne hall as their first semester's president. There's a diamond on that certain finger that proves we ain't just woofin'.

The best and worst about Orville Ragsdale is that "everybody likes Rags." A flash on the basketball floor and reliable as a leader, Rags served as president of the senior class the first semester, and mighty good he looks out there in either capacity, too.

IN PURSUIT OF KNOWLEDGE



Student barristers burn the midnight oil in the law school library—daily hard study is their lot.



Carefully and accurately zoology students study the inner workings of the animal body in the Pacific Coast's newest science building.



Future home-making apply text principles through daily practice in the Home Economics department in Collins Hall.



Chemistry Prof. Kenneth McLeod guides first year chem students as they delve into the complex world of atoms and molecules.



Sympathetic and scholarly Dr. James T. Matthews, Willamette's "Mr. Chips," explains to his math survey class the higher principles of x-y.



Many hours are spent in the dim stacks of the library searching references for theses, reports, and outside reading.



In the art department students with paint brush and easel in hand endeavor to interpret on canvas "the nature of things."



Under the direction of young, versatile Maurice Brennan the University band has achieved excellence in music and marching and is an important part of most every Willamette program.

JUNIORS

The class of 1943, smallest class at Willamette this year, endorses heartily all statements concerning "big gifts in small packages," offering as ample proof the record of its own active members and successful undertakings.

Undaunted by a fourth place in the Glee, the Juniors accepted their fate with a grin and gave themselves and the rest of the student body a good time by paying off some of the most original bets on record.

Swimming in the mill stream was but one of many things that made this year a big year for the Class of '43. From its membership came the director of the Homecoming activities, the chairman of the Centennial program, and the May Weekend manager.

Tall, dark, and handsome Dick Stacer handled an outstanding Homecoming program, initiating a new feature—the greased-pole contest. Bob Hamilton, later elected next year's student body prexy, performed a memorable job in directing the student Centennial celebration. On February 14 the Century Ball, a lovely fantasy of color, climaxed Willamette's celebration of its one-hundredth year. Under the management of efficient Clarence Wicks May Weekend reached new heights of success with the innovation of an all-school picnic on the campus and a floral parade to the program. Fitting climax to the year was the annual Junior-Senior Prom, last big social event sponsored by the class for all juniors, seniors, and their guests.



First semester officers: Dave Putnam, treasurer; Bob Hamilton, president; Beulah Briggs, secretary; Miriam Jensen, vice president.



Second semester officers: Dave Putnam, president; Ruth Mathews, vice president; Bill Herrick, treasurer; Muriel Lindstrom, secretary.



JUNIORS



Adams, H.
Calbom, N.
Elgin, B.
Gilbert, N.
Hayes, M.

Austin, W.
Calderwood, D.
Ewing, M.
Gladden, L.
Herrick, B.

Azumano, R.
Clauaman, G.
Faminow, P.
Graher, J.
Kester, B.

Johnson, W.
Kells, F.

Bates, D.
Clendening, M.
Frederickson, E.
Haight, T.
Hopfer, E.

Holm, B.

Briggs, B.
Davis, H.
French, R.
Hamilton, B.
Hutchinson, P.
Knight, V.

Brown, L.
Downs, H.
Fretz, Z.
Hall, M.
Isaacs, R.

Koshmider, D.

Burgess, J.
Earle, J.
Geiser, M.
Hanson, K.
Jackson, J.

Byrd, D.
Edgell, A.
German, S.
Harnsberger, G.
Jensen, M.

Lehman, R.
McIlvenna, R.
Newgent, R.
Sackett, B.
Smith, E.

Leiser, G.
McKay, S.
Nordean, B.
Schlesinger, R.
Smith, E.
Thelander, B.

Leonard, F.
McWain, W.
Olson, A.
Schmidt, R.
Stacer, R.
Viesko, B.

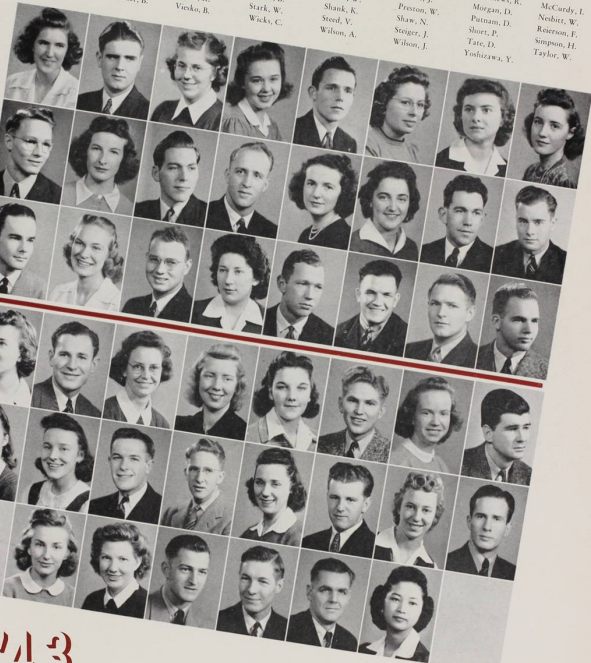
Lindstrom, M.
Miller, E.
Olson, O.
Seacat, B.
Stark, W.
Wicks, C.

Martin, J.
Monroe, H.
Olson, W.
Shank, K.
Steed, V.
Wilson, A.

Matthes, W.
Moore, J.
Preston, W.
Shaw, N.
Steiger, J.
Wilson, J.

Matthews, R.
Morgan, D.
Putnam, D.
Short, P.
Tate, D.
Yoshizawa, Y.

McCurdy, I.
Nebitz, W.
Reiersen, F.
Simpson, H.
Taylor, W.



43

SOPHOMORES



First semester officers: Dorothy Estes, vice president; Mary Jean Huston, secretary; Don Burton, president; Dick Espey, treasurer.



The class of '44 began its second year of college life with booming welcome to the incoming rooks. The sophomore lettermen introduced one or two of the freshmen boys to the millstream during initiation and also assisted the freshmen to arise at an early hour on campus clean-up day.

The spirits of the sophomore class were not crushed even though after a terrific struggle, they lost the bag rush and greased pole contest to the freshmen.

The Friday before Freshman Glee, the sophomores once again took the freshmen to task, and, at the risk of getting somewhat damp themselves, tossed a goodly portion of the male element of the class of '45 into the turbulent waters of the millstream.

In spite of the fact that "Murderer's Row" just smiled and smiled and gave a truly commendable performance, the sophs placed third in the Glee. To atone for this disappointment, the class of '44 gave a brilliant parody on the freshman class and at that time presented to the awe-stricken audience its own century girl in the person of glamorous Earl Toolson, who took the honor with becoming modesty.

Climaxing an enthusiastic year, the sophs' last social event was a picnic, May 8, at Hazel Green. Fun and frolic reigned for the afternoon.

"A perfect score with '44 and we still think we'll do it."



Second semester officers: Chuck Furno, president; Eleanor Todd, vice president; Ted Oodahl, treasurer; Louise Lucas, secretary.



SOPHOMORES



| | | | | | | | |
|---------------|--------------|----------------|-------------|----------------|-------------|--------------|---------------|
| Adams, J. | Albert, R. | Barnick, D. | Beets, W. | Boyce, J. | Boyd, E. | Brewster, D. | Bryant, B. |
| Bucureneh, F. | Burgoyne, R. | Burton, D. | Byrd, M. | Byrd, P. | Cameron, J. | Carlson, L. | Case, A. |
| Chase, R. | Codding, G. | Cookingham, R. | Cooper, B. | Cottew, C. | Coyner, C. | Crawford, G. | Cullens, D. |
| Davis, T. | Deiner, G. | Dickson, D. | East, R. | Ellis, V. | Espey, R. | Estes, D. | Fanger, C. |
| Findley, E. | Finney, R. | Flynn, P. | Fraiola, T. | Friedricks, J. | Fry, M. | Farno, C. | Garson, J. |
| Graham, F. | Gueffroy, P. | Hagglund, J. | Harrold, E. | Hatfield, M. | Hawes, D. | Hawkins, M. | Gile, S. |
| | | | | | | Healy, F. | Henderson, D. |

SOPHOMORES



Hermann, B.
Janner, B.
Kurtz, D.
Libby, P.
Markee, K.
Miles, W.

Hobbs, B.
Johnson, J.
Langford, R.
Lilburn, F.
Markee, K.
Miller, C.

Hood, M.
Johnson, J.
Lee, B.
Lilburn, F.
Mason, E.
Mosier, D.

Hughell, M.
Judd, J.
Leck, S.
Livesay, M.
Matherly, J.
Mything, E.

Mathews, N.
Nystrom, S.

Huston, M.
Karr, V.
Leslie, H.
Lucas, L.

Ibach, I.
Kern, D.
Leslie, M.
Luthy, G.
McKay, S.
Payne, B.

Jacobson, K.
Kister, G.
Leupp, T.
MacMillan, B.

Jarman, V.
Kohagen, J.
Lewis, N.
Macy, J.
Metzler, A.
Perry, B.

Phillips, L.
 Roberts, C.
 Sheldon, E.
 Springer, R.
 Thostad, A.
 Weber, M.

Pitts, B.
 Russell, E.
 Sheldon, P.
 Strickland, N.
 Todd, E.
 Whitmore, B.

Pollock, C.
 Ryan, P.
 Short, R.
 Swanson, B.
 Tomita, H.
 Toobson, E.
 Williams, L.

Randall, V.
 Schaad, B.
 Smith, K.
 Talcott, A.
 Torgeson, K.
 Williams, L.

Ransom, R.
 Schramm, S.
 Snyder, L.
 Tanaka, H.
 Tracy, P.
 Wilson, M.

Reider, B.
 Sechrist, A.
 Sorenson, G.
 Tasker, D.
 Wegner, D.
 Wirch, B.

Reichel, K.
 Schon, M.
 Sparrow, O.
 Taylor, R.
 Walden, A.
 Wootton, M.

Richards, J.
 Shearer, R.
 Spars, S.
 Thompson, R.
 Weber, J.
 Zimmerman, H.



OUT OF THE EDITOR'S DESK



Sweet Swing at the Inter-sorority Formal



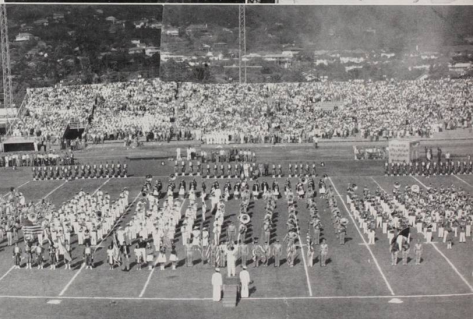
Dancin' at the Dorm



Edward Everett Horton enchants his public



Willamette's Winter Wonderland



*Cameras fore and aft
Hawaiian Interlude*

Where's the Pep, Boys? Let's Whip Whitman!

FRESHMEN

With the spirit and enthusiasm always to be found among freshmen, the class of '45 made its bubbling debut to the Wilamette campus in late September.

Before they fairly had time to acquaint themselves, the freshmen were introduced to the old custom of clean-up for Homecoming. At four o'clock one damp and chilly morning, the boys were rudely awakened and presented with rakes, wheelbarrows, and other implements which they wielded industriously until seven o'clock when their spirits soared upon finding that the freshmen girls had prepared hot coffee and doughnuts to appease their ravenous appetites.

Highlight of the year was their first Freshman Glee. Jim Glasse, as Glee manager, with the whole-hearted cooperation of the entire class, made possible the presentation of an outstanding Glee. Enthusiasm for the conflict was kept burning by various and sundry frosh antics. One morning upon coming to school, students found a grave upon the campus with the inscription, "In loving memory of the class of '44, drowned en masse in the millstream March 23, 1942."

Gaining of second place in their first performance of Freshman Glee marked the achievement of a unified and energetic class.



First semester officers: Al Barrett, sergeant-at-arms; Bob Weaver, president; Catherine Thomas, vice president; Jerry Anderson, treasurer; Emma Lou East, secretary.



Second semester officers: Matt Anderson, sergeant-at-arms; Fred Bradshaw, treasurer; Jack Glasse, president; Marjory Maulding, vice president; Jacquelyn McBee, secretary.



FRESHMEN



Abel, F.
 Anderson, M.
 Bazzel, M.
 Bolland, M.
 Burnet, J.
 Coleman, M.
 Acheson, M.
 Anderson, M.
 Bell, R.
 Bowman, V.
 Burton, D.
 Confer, V.
 Ackley, D.
 Andrews, B.
 Bennett, M.
 Bradshaw, F.
 Butler, J.
 Cox, M.
 Adams, R.
 Aplin, M.
 Bergsvik, M.
 Bressler, M.
 Byrd, W.
 Crews, M.
 Adams, S.
 Appleman, L.
 Bertoglio, M.
 Brown, C.
 Cain, E.
 Cuddeback, F.
 Adkins, B.
 Arnold, D.
 Bisbee, L.
 Browne, B.
 Cake, M.
 Cutler, L.
 Anderson, D.
 Austin, N.
 Blake, J.
 Bruer, M.
 Camp, J.
 Davis, M.
 Anderson, E.
 Barber, V.
 Blake, J.
 Buckner, W.
 Carkin, J.
 Diehm, M.
 Anderson, J.
 Barrett, A.
 Blake, R.
 Burkhardt, B.
 Castrol, R.
 Dimond, J.

Doerr, R.
Ebert, P.
Fitzgerald, J.
Glase, J.
Hathaway, B.
Hutchinson, A.

Doolittle, W.
Edwards, B.
Forsythe, M.
Gollibar, D.
Hildebrandt, R.
Jackson, S.

Doughton, D.
Elliott, F.
Francis, M.
Gray, R.
Holm, L.
Johns, D.

Downey, J.
Estep, M.
Frees, D.
Grimberg, M.
Holmes, D.
Johnson, E.

Drorbaugh, D.
Evans, F.
Fries, J.
Habernacht, W.
Hoover, R.
Johnson, W.

Duffy, F.
Fawk, B.
Gallagher, B.
Hackett, R.
Horron, B.
Jones, A.

Dulancy, M.
Ferrin, M.
Gardner, B.
Hansen, M.
Hutford, L.
Jones, B.

Eakin, E.
Findley, R.
Gonna, V.
Harnsberger, L.
Hughes, F.
Jones, T.

East, E.
Finber, M.
Glase, J.
Harper, J.
Hunt, S.
Judd, P.



FRESHMEN



Kelly, D.
Link, D.
Maulding, M.
Miller, B.
Nelson, T.
Parmenter, V.

Kelley, F.
Loewen, A.
McBee, J.
Morgan, S.
Newlee, P.
Pentney, L.

Krebs, B.
Loop, V.
McCall, W.
Morrell, J.
Noland, E.
Perkins, B.

Kunke, G.
Lovcik, G.
McClelland, S.
Morse, H.
Nordan, B.
Peterson, J.

Kurita, K.
Lowery, M.
McClendon, J.
Mozer, Y.
Nordquist, G.
Pittard, G.

Kyono, K.
Lundy, W.
McKay, M.
Murray, E.
Nowack, F.
Poindexter, R.

Laughlin, M.
Macaulay, J.
McKay, M. J.
Myers, L.
Ogden, S.
Prime, M.

Lerdall, P.
Malde, H.
McKenzie, J.
Naderman, C.
Olson, P.
Provost, B.

Libby, A.
Masse, E.
Metriott, W.
Nash, K.
Oye, M.
Ratcliffe, R.

Rawson, I.
Selden, J.
Smith, M.
Summers, V.
Van Sike, J.

Reed, C.
Sheldon, L.
Smith, R.
Tesarik, D.
Walker, R.
Wills, L.

Reeves, M.
Sherwood, J.
Southwick, G.
Thackara, M.
Weaver, M.
Wilson, K.

Roberts, M.
Shinkle, P.
Steeves, R.
Thomas, C.
Weaver, R.
Wing, J.

Robinson, L.
Shoemaker, C.
Steinbock, A.
Thomas, H.
Wells, B.
Wonderlick, M.

Ross, D.
Simmons, M.
Stonaser, G.
Toews, J.
Wertz, D.
Woodward, C.

Roth, J.
Simmons, R.
Strellman, R.
Tomseth, M.
White, L.
Wrisley, L.

Runyan, R.
Skaling, P.
Strickfaden, J.
Uyesugi, E.
Wicks, R.
Young, C.

Savage, D.
Sloper, V.
Stuyts, L.
Valliant, S.
Wiley, E.



LAW SCHOOL



Otto Skopil, sergeant-at-arms; Verne McCallum, vice president; Don West, secretary-treasurer; Bob DeArmond, president.

In its gray stone structure on the far corner of the campus opposite the State Supreme Court building, the law school started out in its usual form this year. Freshmen enrolled, tentatively taking the first steps toward a career somewhere in the future, and the upperclassmen returned, continuing their achievement for the goal of membership in the legal profession. Then came the fateful December 7, and the law school enrollment took a big drop when a number of the students left for life in the army. Those who left at different times during the year were Bruce Williams, Cecil Quesseth, Jay Monahan, Gordon Wilson, Dave Reinhard, Rupe Park, Joe Wilson, Pat Lytle, and Tom Oye.

George McLeod, young dean of the law school, enlisted in the army in January and Professor Ray L. Smith, who has taught in Willamette's school of law since 1918, succeeded him.

Jack Bohannon
Merwin Brink
Boy Campbell
Bob DeArmond
Beth DeSully

Jerome Foley
George La Vatta
Cecil Quesseth
Don West
Gordon Wilson



Fred Bernau
Herbert Carter
Verne McCallum
Rupe Park

Otto Skopil
Bill Thomas
Taul Watanabe
Louis Bonney

George Constable
Caroline Dabju
Charlotte Ellingsworth
Wayne Hadley

Laurence Johnson
Pat Lytle
Dun Moses
Bud Reynolds
Jack Walker



A social event that progressed with true law school spirit was the hayride that took place in the fall. Horses weren't available, or maybe no one in the law school was on intimate enough terms with a horse to drive one, but anyway, the hayrack was drawn by a truck, which is really much faster in the long run, to quote the law students. The ride ended up at Hazel Green, where entertainment consisting of boating, dancing, a strenuous softball game, and, of course, refreshments, reigned for the afternoon.

Perhaps most important of the year's social events was the banquet held May 30 at the Marion hotel, honoring Professor Claire M. Inman, who is retiring this year. Alumni and students attended, paying their respects to the professor who has taught in Willamette's law school since 1908, missing only one year, after which he returned at the request of Charles McNary, then dean of the law school.

Taking a Friday afternoon off before entering into the last month of hard studying, law school members enjoyed their annual picnic at Hazel Green. In the traditional softball game, the upperclassmen took the measure of the freshmen. The latter, true neophyte lawyers, duly claim they were robbed by the umpiring of Prexy Bob DeArmond.



DURING the rather long and transitory period that was the middle of the nineteenth century, Willamette, though small and still pioneer, was entirely adequate for the times. It was the age of

the American Academy, the rising young attorney, and the pious minister. Lawyers were trained in lawyers' offices and doctors were trained by practicing physicians. By the 1870's, Willamette's firmly established medical school was housed in rented rooms here and there, its professors were benevolent local practitioners who sacrificed a lot to train their students. The students may have been a bit aggressive at grave digging, but then, as the school firmly insisted—"The less the public knows of a dissecting room of a medical college the better for all concerned."

Had you been a student at Willamette during the '70's you would have been enrolled in either the liberal arts or the medical school. In the former, there were the collegiate, academic, grammar, primary, and musical departments. One woman held sway over the primary, one over the grammar. The collegiate and academic departments shared four professors—social science, modern and ancient languages, mathematics, and natural science. You would probably have had a more reverent attitude in those days, treating your professors with more respect, they taking care to instill morals and conduct into your mind as well as Latin and Math. You would not have chewed gum, and you would have gone to chapel. You would have entered or left the campus through an opening in the rail fence, guarded by zigzag rows of posts put there because cattle and horses still ran loose within the city limits. Chances are when you went past the dissecting laboratory of the medical school, you would have made fun by holding your nose and moaning.

Those '70's were some of the hardest years, financially, that Willamette has experienced. The vast lands that the school owned were rapidly dwindling through sale and lease and gift. Perpetual scholarships were sold at unbelievably low prices, only to be retrieved with great difficulty later on.

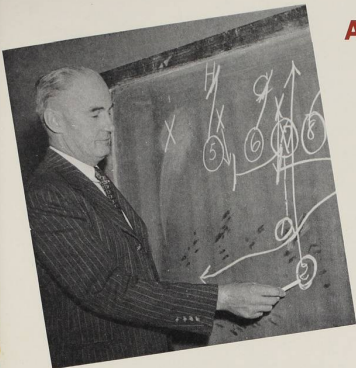


ATHLETICS

ATHLETIC DIRECTOR

Sixteen years is a long time to stay at any school, especially in the capacity of athletic director and football coach, but such is the record of Roy S. "Spec" Keene, the headman of Willamette's coaching fraternity. Almost needless to say, "Spec did it again." His Bearcat gridsters chalked up another conference championship, their second consecutive and their eighth since the clever guiding hands of Keene took over the coaching reins in 1926.

Not only has "Spec" produced another football champion, but under his guidance the entire athletic program at Willamette was one of the most successful in years.



HIS ASSISTANTS

Howard Maple, Gale Currey, and Lestle Sparks complete the coaching staff that is responsible for Bearcat success in athletic competition.

Probably one of the busiest men in Salem is "Happy" Howard Maple, assistant football, head basketball, and track coach. Maple, besides holding down three Willamette coaching jobs, is also business manager of the Salem Senators, Salem's professional baseball team, and an Alderman on the city council.

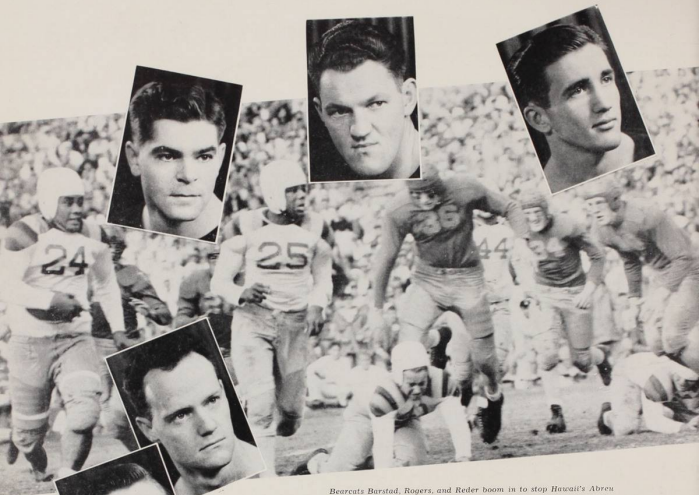
But, as busy as "Mapes" is, he can still find time to consistently turn out real athletic teams, bringing home several conference hoop championships since he assumed command of the basketball destinies at this Methodist institution. Although the Bearcats failed this year to repeat as champions, they wound up in a tie with Whitman for second place.

Miss Gale Currey again handled women's athletics in her competent manner. Under her supervision interest in this field was greatly increased, with one of the largest freshman turnouts in years.

Graduate Manager Lestle J. Sparks is the fourth member of Willamette's coaching fraternity. Though he handles the business management of the University's athletic program as well as all of ASWU activities, Sparks, in addition, supervises a large intramural program, coaches the tennis squad, and teaches physical education classes.

Lestle J. Sparks
Gale Currey
Howard Maple





Reder

Bearcats Barstad, Rogers, and Reder boom in to stop Hawaii's Abreu

Moore

Reynolds

Rogers

Ogdahl

GRIDDERS

Meet the Battering Bearcats! The greatest football team ever put together on the Willamette campus, a team that gained recognition as being the highest scoring club west of the Mississippi and the second highest in the country—a

powerful, driving machine that at one time during the season was acclaimed as being the only undefeated, untied, unscored on unit in the West.

The success of these gridiron gargantuas dates back to late August when Roy Servais (Spec) Keene, the Jason Lee of WU football, issued the initial call for varsity practice and was promptly greeted by twenty-four lettermen and one of the most promising group of freshmen gridgers in history.

Spec promptly went to work with some fifty odd men and by the time the first scheduled game rolled around their thorough mastery of the intricate man-in-motion system was something beautiful to behold.

In their initial clash of the season, a conference tilt with the College of Idaho, the Bearcats ran rough-shod in scoring 52 points while holding their bewildered opponents scoreless.



In their next game of the year, the capering 'Cats trotted onto the new turf of Multnomah stadium and proceeded to give the perennially strong Pilots of Portland University one of their worst nights in history. The spectators had hardly found their seats when on the first scrimmage play of the game "Little Dynamite" Al Walden, stubby WU fullback, found a hole off-tackle and fairly exploded through the secondary, hipper-dippering some forty yards for the initial Bearcat score, and the beginning of the end for the Rose City boys. The fleet WU backs scored three more times, and the final count was WU 26, Portland 0.

The Bearcats next traveled to McMinnville for their second conference clash of the season with Linfield, and kicked the stuffings out of the clawless Wild-cats to the tune of 43-0.

The Whittier Poets of Whittier, Cal. were the next home opponents of the WU men, and for the entire first half the Bearcats had quite a little struggle on their hands. Whittier scored early in the game on a perfect pass play, converted, and then proceeded to stave off continued Bearcat scoring threats until late in the second quarter when the 'Cats finally pushed over their first score. However, after half-time the Keenemen surged back and scored 21 points in eight minutes to romp over the Poets 33-7.



First row: Miller, Connors, White, Pralola, A. Walden, Fitzgerald, Reynolds, Furno. Second row: Hampton, Reder, Barstad, Odahl, Burgess, Stewart, Nordquist, Olson. Third row: Kern, Cookingham, Constable, Kelly, Jacobson, Barrett, Barbour, C. Walden, Coach Maple. Fourth row: Kartz, Bennett, Moore, Rogers, Morley, Goodman, Deiner, Coach Keene.

CONFERENCE CHAMPS



Making their first long trip of the year, the 'Cats travelled to Moscow, Idaho, for a game with the University of Idaho Vandals. This proved to be the Bearcats downfall. From the opening play of the game when Al Walden was injured, the Bearcats could do nothing right, and although the game was much closer than the score indicated, the Vandals trotted off the field with 33-6 victory.

Fighting mad from the Idaho debacle, the Bearcats surged back the next week-end to literally crush the Loggers of CPS in the annual WU homecoming game. The final score was Wil-lamette 55-CPS 6. This was another conference game.

In their final home engagement of the season, the 'Cats met their arch rivals, the Badgers of Pacific University, and polished them off with considerable gusto 40-0 in another conference tilt. The Bearcats then travelled to Walla Walla for their annual tussle with the Whitman Missionaries and their last conference game of the season. The Missionaries presented a much stronger conference club than WU had yet met. But the indomitable 'Cats finally "nosed out" the Whitmanites 28-0. Thus the WU gridders added another WU Conference title to their already over-stuffed crown—and with amazing ease, compiling 218 points to their opponents seven in five conference tilts.



Then the Battering Bearcats set sail for the land of leis and hula girls—the Hawaiian Islands—for a game with the colorful Rainbows of the University of Hawaii.

The University of Hawaii wasn't the only colorful club on the field the day the two teams met before a capacity crowd of thirty thousand. The Bearcats, fighting not only the Rainbows but also seasickness and sea legs, put up a magnificent stand, scoring first, and trailing only by the skinny margin of one point—7-6—at half time. However, the tired 'Cats just couldn't cope with the dazzling Rainbow attack in the second half and finally succumbed 20-6. Thus one of Willamette's most successful seasons in history was wrapped up in a beautiful island setting more than two thousand miles from Salem.



Right half Ogdahl bumps Mr. Vandal. Inserts show Fitzgerald and Walden.

Furno is trapped by the Pacific Badgers. From left: Barrett, Barbour, White, Burgess, Fraiolo, Jacobson, Stewart.





A high moment in the Linfield series. From left: Ragsdale, Galláher, and Robertson.

HOOPSTERS

Willamette's Bearcat hoopers, winners of five of the last six NW conference championships, had to be content this year with a tie with Whitman for second place. Linfield College copped the coveted tiara for the first time in six years.

Starting with a squad that was badly riddled by graduation from last year's championship club, coach "Happy" Howard Maple almost accomplished the impossible, and had just a little of his luck been good instead of all bad, he would very probably have garnered another championship for the Bearcat lair.

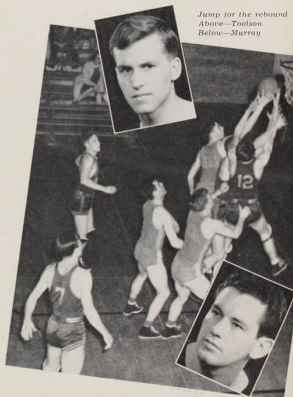
Despite a shaky start that cost the 'Cat hoopers a number of early season losses, the casaba catchers finally hit their stride, and toward the end of the season they were almost invincible.

Their only conference losses were one each to Whitman and Linfield in a screwy conference schedule that didn't call for Whitman and Linfield, two of

the strongest teams, to meet. It is very possible that if these two teams had played, WU would have had no worse than a tie for first.

Highlights of the past season came when the Bearcats embarked on a ten-day tour that took them into three different states for games with schools of Washington, Idaho, and Utah. This tour opened the season for the slow starting WU casaba crew, and it was on this trip that half of the entire losses were sustained. The other high spot of the year was when the Bearcats caught fire against the highly touted Pilots of Portland University and gleefully pinned their ears back 57-36 to avenge an earlier loss, and at the same time stopped PU's supposedly invincible Paul O'Toole in his tracks.

In conference play the 'Cats dropped their initial encounter of the season to Linfield on the latter's floor. Then came four consecutive wins, one from Pacific, two from College of Idaho, and a revenge victory over Linfield. Incidentally, this was the only conference loss the Wildcats suffered. Next came the crucial Whitman series, played in Walla Walla. A double win from the Missionaries would have assured the Bearcats of a first place tie, but they just couldn't



Jump for the rebound
Above—Toolson
Below—Murray

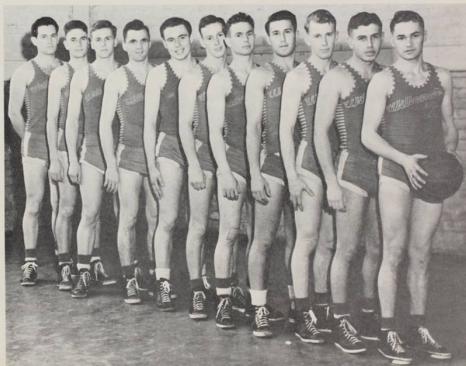
BEARCATS BATTLE

quite turn the trick, losing the first game 51-31. However, they bounced back strong the next night to garner a split with the Missionaries.

In the final game of the season the Bearcats overcame a ten-point Badger lead at half time to drop their arch enemies on Pacific's own floor 38-31 and conclude their season in a very successful manner.

For the entire season the Maplemen broke exactly even, winning eleven and losing eleven. However, it may be pointed out that most of the 'Cats losses were to much larger schools, namely Oregon State, Washington State, Oregon, Utah State, and Utah U.

Dependable Sumner Gallaher, playing his last year of varsity ball with the Cardinal and Gold, was named as All-Conference forward for the second consecutive year. Another outstanding Bearcat cageman was Jimmy "Spook" Robertson, also a senior, who made a guard position on the All-Conference aggregation. Gallaher and Robertson were also the leading scorers for the 'Cats, and Gallaher was second high in the conference.



Front to back: Duggell, Barnick, Lilly, White, Des Jardin, Barbour, Medley, Robertson, Toolson, Gallaher, Murray.

SPIKE MEN

As past seasons have shown, track has never proved too successful at Willamette, mainly because of the lack of adequate facilities on the school's home field. This necessitates working out on Olinger field, home of the Salem High Vikings. This year weather conditions have played an important part in dampening the spirits of the sturdy 'Cat cinder lads. Besides interrupting daily practice sessions regularly, Jupe Pluvius caused the cancellation of three track meets. A final serious blow occurred when Coach Howard Maple left his duties as instructor and track coach at Willamette for a position in Alaska. However, able

Paul Cookingham, track captain, took over where Maple left off, performing a creditable job.

The 'Cat thinclads have broken even in the two meets they have competed in so far this season. Linfield was defeated 77-47 on their field. At Portland the Pilots handed Willamette a 104-27 whipping. The Bearcats salvaged some dignity by capturing the shotput and tying for first place in the high jump. Cookingham's toss of 4 feet 7 inches was good enough for a first in the weight event, and Elmer Abel's leap of 5 feet 10 inches brought him a three-way tie in the



Lyle Sheldon, Ron Runyan and Dan Ross round the turn in a close heat.

Track squad includes:
kneeling—Sheldon, Sim-
mons, Ross; standing—
East, Abel, Runyan, Byrd.

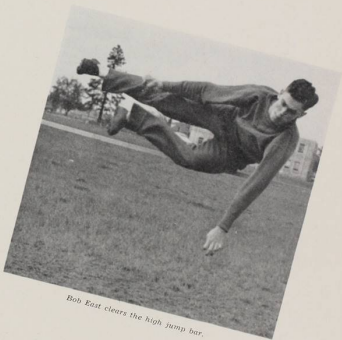


high jump. Others who showed ability in the meet were John Macy, speedy 440 man; Don Tasker, hurdler and weights; Ron Runyan, sturdy distance runner; and Ken Lilly, in the 220.

Other tracksters who show promise of hanging up points in future meets are Charles Furno and Bob Bailey in the broad jump, Glenn Nordquist in the javelin, Don Wegner in the mile, and Bob Simmons in the pole vault.

The Bearcats are pointing for the big conference meet slated for Walla Walla, May 23. With the weather permitting consistent practice sessions, Willamette is most likely to upset the dope bucket at Whitman and carry away top honors.

Cookingham not only leads his team as new track coach but also as the outstanding track man. In the meets so far this season, he has gained more points than any other individual performer. Closely following him are Don Tasker and Elmer Abel.



Bob East clears the high jump bar.



Kneeling—Doc Walker, Adams, Kister, DesJardin, Ackley, Barnick, Bettis, Chris the bat-boy,
Coach Keene. Standing—B. Walker, Ragsdale, W. Walker, Jackson, Bennett, Richards, Hanauka,
Toolson, Perry, Murray.

DIAMOND MEN

Sorely hampered by repeated outbursts from old Jupe Pluvius, Willamette's diamond aggregation was slow to swing into the stride that makes for a winning ball club. Also the loss of Jimmy Robertson, Clint Cameron, and Johnny Kolb through graduation and professional ball was no little worry to Coach Spec Keene.

Possibly this year's team should be known as the "hardluckers," having lost no less than nine games by the very slim margin of one run. However, all of these losses were to the very toughest kind of competition; namely Oregon, Oregon State, and the Salem Senators. Willamette opened the season by defeating the Penitentiary Greys. The second victory of the season was the highlight of the pre-conference schedule. Thin, bespectacled Ammon Adams hurled a five-hit performance to lead the Keenemen to a 2 to 1 victory over the professional Salem Senators.

Willamette this year can boast one of the strongest pitching staffs among college teams on the coast. These hurlers not only pitch but are also capable of playing almost any position on the field. On the receiving end of the hurlers is Bob Bennett, converted freshman catcher, who has proved to be a timely hitter and is improving every game. Bob Daggett, Bob Perry, and Orville Ragsdale are infield standouts while Joe Murray and Ward Walker in the outfield have

stopped more than their share of base-runners by a quick throw or a shoe-string catch. Strengthened by many freshmen, the Bearcats have prospects of a better squad next season. Rookie pitcher Ammon Adams showed plenty of ability in defeating the Salem Senators 2-1.

The 'Cats have as yet played but two games with Linfield in the conference schedule, winning them both. By comparison with other conference nines, this year's "horsehide swatters" of WU have a good chance to retain last year's title.



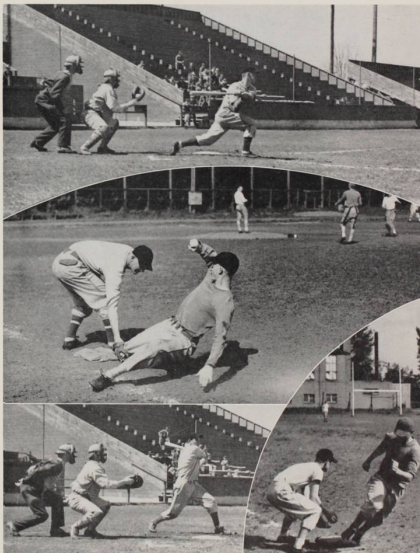
YEA TEAM!

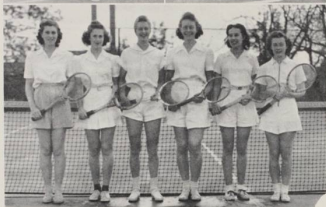
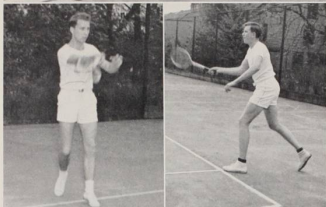
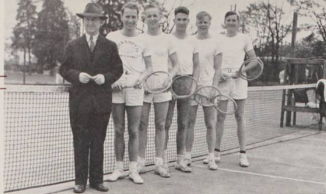
Schaud showing beautiful form. Oh yes, he missed the ball.

You're out! Richards catches Ragsdale at first in a inter-squad game.

A mighty swing!

In a practice session Hamauska rounds third for home as Perry wails the throw.





Top—Sparks, Olds, Downs, Gallaher, Jacobson, Gilmore. Center—Olds and Gilmore in action. Below—Flynn, East, Gueffroy, Schmidt, Carkin, Hughell.

NET MEN

Sporting a galaxy of veterans, this year's tennis club is proving to be one of the finest ever formed at Willamette. Bud Gilmore, thrice Northwest singles champion, was out of school last year but this season is showing better form than ever. As yet, he has not dropped a set. Veterans Sam Gallaher, Hume Downs, and Glen Olds are holding positions two, three, and four, respectively. Filling out the squad are Ken Jacobson and John Burget. Wins to date have been posted over Linfield 4-3, and Multnomah Club 7-0. A hard fought match was lost to Oregon 4-3.

Girls' tennis kept up with past excellent teams by defeating Linfield in two matches 4-3, 5-2, in their first showing of the year. Strengthened by Phyllis Gueffroy and Martha Hughell, holdovers from last year's team, these feminine racketeers are indeed formidable. Others holding team places are Jean Carkin, Emma Lou East, Reeva Schmidt and Phyllis Flynn.

Matches for both men and women teams are still to be finished with Oregon, Reed College, and Multnomah Club. Poor weather caused the postponement and cancellation of a number of matches.

FROSH BASKETBALL

In spite of difficulties brought on by the war, the 1942 Willamette Bear-kitten freshman basketball team overcame these handicaps to complete one of the most successful seasons for Bearcat rook teams in years, winning 21 games as against 9 losses.

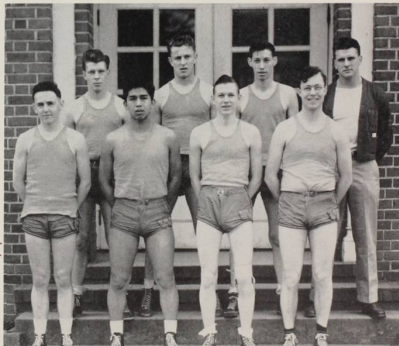
The team was late in getting started as Goodman, Kelly, and Connors of the varsity football team were stranded in war-torn Hawaii on that fatal December 7 at Pearl Harbor. Then at mid-year, "Abbie" Steinbock, steady forward, left school to enter the army. And to add to this handicap, Maurie Kreutz, their able coach, also entered the service of Uncle Sam. Paul Cookingham, junior football and track veteran, took over the coaching reins to complete the season; but he too ran into difficulties when Ron Runyan, ace forward, was lost to the team near the end of the season because of a twisted knee sustained in action.

The frosh enjoyed three trips during the season, playing at The Dalles, Redmond and Bend, and Ft. Stevens.

Outstanding wins for the Bearkittens were those over Salem high, Bend, McMinnville, and Redmond. The frosh also won the city major league second half title, but lost in a play-off with the first-half winners.

Marvin Goodman of Coquille, rangy center, paced the scoring for the freshmen by a substantial margin over his teammates. Other rooks who showed potential varsity caliber are Dave Kelly, Bob Weaver, Ron Runyan, Fred Bradshaw, and Bob Walker.

First row—left to right: Fred Bradshaw, Cecil Connors, Ronald Runyan, Mark Tiedt. Second row: Bob Walker, Marvin Goodman, Bob Gardner, Coach Paul Cookingham.



INTRAMURAL

PASS BALL

Romping through all competition seemingly at ease, "Dem Bums," a combination of smooth-working touch football players, won the fall intramural passball championship with seven consecutive victories. They climaxed their season with a 7-6 victory over the Linfield titlists.

The passball league started with 11 men teams and then was changed to the final 6-man combination. Richards, F. Reiersen, Drury, and Shoemaker paced the victorious "Bums."

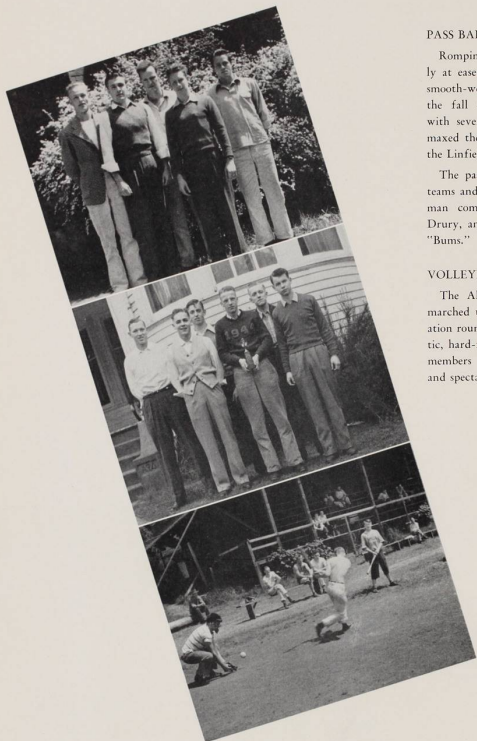
VOLLEYBALL

The Alpha Psi Delta fraternity netmen marched unbeaten through a double elimination round robin schedule against enthusiastic, hard-fighting rivals. A team of faculty members heightened interest to opponents and spectators alike.

Supermen: Downs, Price, Moore, Wegner, Fitzsimons.

Alpha Psi Basketball champs: Olson, Link, Schaud, Kister, Kern, Davis.

Chusid misses a low one.



CHAMPIONS

BASKETBALL

The "Supermen" independents proved to be really "Supermen" by taking the "B" league title in stride and then copped the intramural title by defeating the Alpha Psi Delta "A's" in a hard fought game, 29-25. Sparked by Downs and Evans the "Sups" rolled through undefeated in league play.

TABLE TENNIS

The Alpha Psi "A" team for the fourth successive year won top honors in table tennis, completing an unbeaten season for the third time.

Wilson, Gallaher and Moses of the "A's" had perfect records in singles, while Dunbar, No. 1 of the Sig "A's" and last year's city champion, lost but once.

SOFTBALL

The Alpha Psi "A's" and the "Rubes" vied in the playoffs for the softball championship.

Alpha Psi Volleyball champs:
Kern, Schaud, Hawes, Espey,
Davis, Stacer.

Alpha Psi Table Tennis champs:
Gallaher, Moses, Wicks, Wilson.

White awaits Moses' pitch.





WOMEN'S

First row: Downey, Burgoyne, Magee, Selden, Wilson, Melberg. Second row: Bennett, Gueffroy, Provost, Acheson, Roberts, Graham, Schmidt, Fretz, Karr, Moore, Libby, Morgan. Insert: Miss Gale Currey.

Providing recreation for Willamette women through active sports is the purpose of the Women's Athletic Association. Not only athletic ability but also wonderful friendships are enjoyed by participation in campus athletics. By promoting a program of varied sports, intramural competition, and social functions, W.A.A. aims toward the development of good health, physical efficiency, sportsmanship and leadership through planned fun and fellowship. Their program featuring the motto "A girl for every sport and a sport for every girl" has been broadened to include archery, basketball, volleyball, ping-pong, bowling, golf, swimming, badminton and tennis.

Badminton, a recent addition to this list of activities, gained much popularity among the women this spring. An enthusiastic group competed with faculty players in a competitive game of badminton every afternoon from four to five.

The year's program begins with basketball in the fall, a thrilling game drawing the greatest number of coeds to compete with other class teams. An all-star team, composed of Phyllis Gueffroy, Mary Bennett, Catherine Thomas, Betty Provost, Reeva Schmidt, and Madeline Morgan, the basketball manager, was selected.

The next activity in the sport line is volleyball, a game that everyone can play. In spring a girl's fancy turns to tennis, a refreshing out-door sport. Ever ready to meet the changeable Oregon weather the W.A.A. fosters a complete program so one can easily switch from various fair weather sports such as hiking and bicycling to ping-pong and badminton on a rainy day.

The association is under the leadership of Hazel Magee, a slight wiry friendly person with a knack for leadership. Efficient and levelheaded Reeva Schmidt served as vice president. Assisting these girls is smiling Miss Gale Currey, Women's Athletic director. Club members pronounce her "a skilled athlete" and "a good fellow."

ATHLETICS

W.A.A. is the sponsor of a beautiful gold cup, the highest award of the association, which is awarded to the senior girl chosen as the best all-round athlete including sportsmanship, personality, and cooperation. A Junior award is presented to a sophomore or junior girl who has made an outstanding contribution to the social and ethical aspect of women's physical recreation activities. Her name is placed upon a plaque that is kept by the association. A small gold arrow is awarded each girl shooting an "all-gold end" at 30 yards. To first year players on the All-Star team goes a small silver basketball. Sweaters, certificates and letters are annually presented to enthusiastic athletes.

The big event of the year is the week-end beach trip, but this spring "rubber for defense" prohibited the journey. The "Flag Day" playday at Wilamette was cancelled in favor of the invitation to the Oregon State coeds' playday. Other highlights of the season's program are playnights in the gym and the Tin Can Breakfast in May.



ARCHERY—
First row: Bertoglio, Mapee, Fretz.

VOLLEYBALL—
First row: Downey, Mapee, Libby, Roberts, Selden. Second row: Bennett, Gueffroy, Provost, Graham, Schmidt.

ALL-STAR BASKETBALL TEAM—
First row: Gueffroy, Thomas, Bennett. Second row: Morgan, Provost, Schmidt.

PING-PONG AND BADMINTON—
First row: Moore, Graham, Selden, Roberts. Second row: Gueffroy, Acheson, Schmidt, Fretz.





Yell leaders in action—Habernicht, Loup, Savoie, and McKenzie.

PEP STAFF

Louis Bonney, assisted by Bob Isaacs, Bill Habernicht, and Jim McKenzie, served as the king of pep on the Willamette campus this past year. Functioning with the yell leaders was Song Queen Barbara Pitts.

In conjunction with the yell leaders was another live-wire pep-exciting group—the rally committee. Under the leadership of Bob "Bones" Hamilton, the rally group staged rallies, conducted pep assemblies, and planned game stunts.

A rally exhibition for the Hawaiian-bound Bearcats at the station was one of the high spots of the football season. An enthusiastic send-off was staged. The band, yell leaders, rally committee, and students working together made this one of the best rallies in ye old school's history.

Fussing at football games took a back seat at the Armistice day game with Pacific. A rally committee edict placed men and women in separate sections after other ideas for improving the enthusiasm and pep of the students met with little success.

The rally organization was initiated in 1940 with Rupe Parks as head. A chairman is appointed each year by the student body president and committee representatives are then selected by the chief.

As a result of a constitutional amendment this spring, the offices of yell king and song queen became appointive rather than elective. The selection of a yell king now falls upon the shoulders of the ASWU executive council.

SEASON SUMMARY

VARSITY FOOTBALL

| | | | |
|------------|----|------------------------|----|
| Willamette | 19 | Portland Air Base | 0 |
| Willamette | 52 | College of Idaho | 0 |
| Willamette | 26 | Portland University | 0 |
| Willamette | 33 | Whittier College | 7 |
| Willamette | 43 | Linfield College | 0 |
| Willamette | 51 | College of Puget Sound | 6 |
| Willamette | 40 | Pacific University | 0 |
| Willamette | 6 | University of Idaho | 33 |
| Willamette | 28 | Whitman College | 0 |
| Willamette | 16 | University of Hawaii | 20 |

VARSITY BASKETBALL

| | | | |
|------------|----|-----------------------|----|
| Willamette | 28 | Pacific Packards | 39 |
| Willamette | 34 | Oregon State | 44 |
| Willamette | 40 | Multnomah Club | 35 |
| Willamette | 36 | Signal Oil | 48 |
| Willamette | 39 | Linfield | 49 |
| Willamette | 33 | Harlem Globe Trotters | 43 |
| Willamette | 41 | Harlem Globe Trotters | 50 |
| Willamette | 17 | North West Nazarene | 54 |
| Willamette | 34 | Washington State | 42 |
| Willamette | 23 | University of Utah | 41 |
| Willamette | 31 | Utah State | 38 |
| Willamette | 31 | Idaho Southern Branch | 28 |
| Willamette | 14 | Albion Normal | 38 |
| Willamette | 21 | Boise Junior College | 29 |
| Willamette | 41 | College of Idaho | 27 |
| Willamette | 34 | Portland University | 44 |
| Willamette | 17 | Portland University | 35 |
| Willamette | 31 | Whitman College | 51 |
| Willamette | 35 | Whitman College | 33 |
| Willamette | 44 | College of Idaho | 34 |
| Willamette | 41 | College of Idaho | 37 |
| Willamette | 38 | Pacific University | 35 |

TRACK

| | | | |
|------------|----|---------------------|-----|
| Willamette | 77 | Linfield College | 47 |
| Willamette | 27 | Portland University | 104 |

TENNIS

| | | | |
|------------|---|-------------------|---|
| Willamette | 7 | Multnomah College | 0 |
| Willamette | 4 | Linfield | 3 |
| Willamette | 3 | Oregon | 4 |

BASEBALL

| | | | |
|------------|----|---------------------------|----|
| Willamette | 10 | Oregon State Penitentiary | 4 |
| Willamette | 3 | Oregon State College | 4 |
| Willamette | 1 | Oregon State College | 3 |
| Willamette | 4 | University of Oregon | 7 |
| Willamette | 4 | Oregon State College | 5 |
| Willamette | 2 | University of Oregon | 5 |
| Willamette | 1 | University of Oregon | 10 |
| Willamette | 3 | University of Oregon | 6 |
| Willamette | 1 | Salem Senators | 2 |
| Willamette | 2 | Salem Senators | 1 |
| Willamette | 0 | Salem Senators | 1 |
| Willamette | 10 | Linfield College | 3 |
| Willamette | 7 | Linfield College | 3 |





WILLAMETTE kept marching on, step by step, with the Oregon country. Gradually, along with her advancing standards, there came additions to the staff and the buildings. Traditions developed one by one. Forerunner of the *Collegian*

—the *College Journal*—was begun in 1882. The following year the law school was made an accredited college of the University. The *Wallulub* appeared in 1903. On the gridiron the Bearcats tied California in 1905. The erection of Eaton Hall in 1907 was a strong step in Willamette's rise. By the beginning of the World War the May Court and Freshman Glee had become cherished traditions and you could see clearly the figure of Willamette as we know it. At last the faithful Academy was gone.

During the war enrollment dropped terrifyingly low, and then suddenly sprang to new heights. In 1919, so far from the financial hopelessness of the '70s, Willamette was under strong sail with a new president, Dr. Carl Gregg Doney, at the helm. The early '20s brought a new Lausanne Hall, fraternities and sororities, and a brick gymnasium to the campus.

1934 marked a definite milestone in Willamette's progressive development. For that year there came a fresh, strong personality to the University in the person of Dr. Bruce Baxter. Liberalism, fellowship, and an adjustment with the times accompanied the new president's administration. When, in 1940, Dr. Baxter was elevated to Methodist bishopric the board of trustees faced the problem of choosing a new guider of Willamette's course. Late in the summer of 1941 they announced the selection of Dr. Carl Sumner Knopf, director of religious education at U.S.C. Serious matters faced the new president upon his arrival on the campus in late September of this school year. For nearly twelve months Willamette had been without a definite leader and policies were established for the semesters; the celebration of the University's one hundredth anniversary was close; and World War II had already affected the enrollment adversely. Energetically Dr. Knopf has attacked these problems. Though the path ahead is not clear nor smooth, Willamette looks toward a second century of service and achievement with confidence.



ORGANIZATIONS



LIVING GROUPS



Coming down those stairs for formals is a big moment in the life of a hall girl.



Mealtime is always a happy occasion—just look at that glow on Bettie Bronie's face.

LIFE AT LAUSANNE

LIFE AT THE HALL . . . hard to explain to anyone who has not lived there, it is a combination of hundreds of little things—fire drills, dancing in the parlor, singing in the dining room, Snowball, the cat, proctors and on and on. To a Hall girl life at Lausanne means fire escape escapades, quiet on the sleeping porch, squealing over flowers on formal nights, waiting for a shower and praying the hot water will hold out, notes from Miss Jack after an unexpected inspection of rooms.

It means corsage boxes on window sills, studying in second floor parlor and someone yelling

from first floor to third. It means an inevitable feeling of isolation when you go home and get dressed for a date all by yourself—no help, advice or borrowed finery.

Besides all this, life at Lausanne this year leaves memories of special things—the kid party, Miss Jack in Hawaii, air raid drills and black-outs, Club 6672—winter formal, diamonds and frat pins galore, barring of civilians as uniforms reign supreme at the spring dance.

Most of all, life at Lausanne means friendship and fun—never-to-be-forgotten.



Typical front porch view of Lausanne in the Spring.



Nothing is sacred at the hall, especially anything that comes in the mail.
A domestic view of the much occupied washroom
First semester president June Woldt and second semester president Elizabeth Hamilton compare notes with Miss Jack in the office.



Kirk
Denison
Barker
Byrnes
Cullens
Morgan

Morris
Sanders
Davis
Harnsberger
Matthes
Olson

Tate
Viesko
Adams
Bucurenych
Borguone
Crawford

Cullens
Gueffroy
Lewis
Karr
Weber
Anderson

Appleman
Arnold
Barber
Bennett
Bergsvik
Blake, Janet

Blake, J.
Bressler
Burton
Carkin
Elliott
Francis

Harnsberger
Holmes
Hosford
Hughes
Loop
MacMillan

Olson
Provost
Savage
Seldon
Smith



OFFICERS

Mrs. William E. Kirk - - - - - *House Mother*
Gayle Denison - - - - - *President*
Dorothy Tate - - - - - *Vice President*
Madeline Morgan - - - - - *Manager*

GRADUATES

Gayle Denison

SENIORS

Mary Barker - - - - - Anne Morris
Juanita Cullens - - - - - Marion Sanders
Madeline Morgan

JUNIORS

Helen Davis - - - - - Olivia Olson
Glennerva - - - - - Dorothy Tate
Harnsberger - - - - - Barbara Viesko
Wilma Matthes

SOPHOMORES

Jean Adams - - - - - Valerie Karr
Phyllis Gueffroy - - - - - Marjorie Weber
Nadine Lewis

FRESHMEN

Margaret Anderson - - - - - Marian Francis
Lucille Appleman - - - - - LaVerne Harnsberger
Dorothy Arnold - - - - - Doris Holmes
Virginia Barber - - - - - Louise Hosford
Mary Bennett - - - - - Frances Hughes
Margorie Bergsvik - - - - - Virginia Loop
Janet Blake - - - - - Elizabeth MacMillan
Janrose Blake - - - - - Pauline Olson
Marjorie Bressler - - - - - Betty Provost
Dorothy Burton - - - - - Donna Belle Savage
Jean Carkin - - - - - Marjorie Smith
Florence Elliott - - - - - Jean Seldon

ALPHA PHI ALPHA



AΦA



B X

BETA CHI

OFFICERS

Mrs. Charles A. McCargar - - - *Home Mother*
 Barbara Hollingworth - - - *President*
 Dorothy Moore - - - - - *Vice President*
 Cleo Swenson - - - - - *Manager*

SENIORS

Dorothea Greenwood Dorothy Moore
 Frances Harris Cleo Swenson
 Barbara Hollingworth Margaret Segmund
 Doris Laney Marjorie Waters
 Barbara Minor Lucy McIntyre

JUNIORS

Beulah Briggs Barbara Kester
 Shirley Caulfield Stella McKay
 Bernice Elgin Jean Moore
 Lois Gladden Beryl Seacat
 Pat Hutchinson Kay Shank
 Jean Jackson Patricia Short
 Miriam Jensen

SOPHOMORES

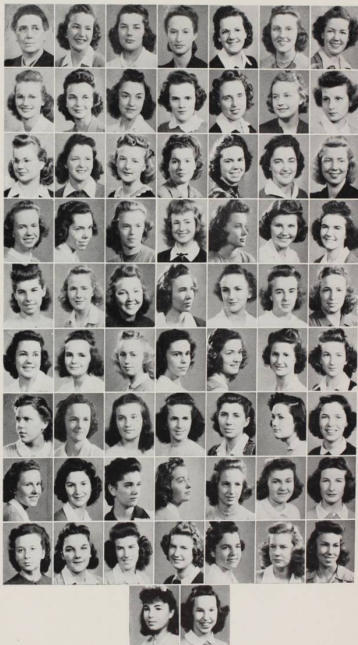
Jane Cameron Barbara Pitts
 Ruth Finney Clare Pollock
 Mary Jo Geiser Patricia Ryan
 Mary Jean Huston Susanna Schramm
 Virginia Jarman Margaret Schon
 Betty Jeannet Sybil Spears
 Jan Johnson Nancy Strickland
 Dorothy Koschmider Ruthanne Thompson
 Shirley McKay Pat Tracy
 Lois Phillips

FRESHMEN

Betty Andrews Marjorie Maulding
 Nancy Austin Jacqueline McBee
 Rosella Bell Mary McKay
 Bettie Browne Mary Jean McKay
 Lois Butler Peggy Newlee
 Louise Cutler Pollyanna Shinkle
 Florence Duffy Pat Skaling
 Fama Lou East Betty Jeanne Smith
 Phyllis Flynn Jean Van Skike
 Joyce Harger Jean Wing
 Aileen Hutchinson Charlotte Woodward
 Mary Laughlin

MacCargar
 Greenwood
 Harris
 Hollingworth
 Laney
 Minor
 Moore
 Segmund
 Swenson
 Waters
 McIntyre
 Briggs
 Caulfield
 Elgin
 Gladden
 Hutchinson
 Jackson
 Jensen
 Kester
 Moore
 Seacat

Short
 Cameron
 Finney
 Geiser
 Huston
 Jarmon
 Jeannet
 Johnson
 Koschmider
 Phillips
 Pitts
 Pollock
 Ryan
 Schramm
 Schon
 Spears
 Thompson
 Andrews
 Austin
 Bell
 Browne
 Butler
 Cutler
 Duffy
 East
 Flynn
 Harper
 Hutchinson
 Laughlin
 Maulding
 McLee
 McKay, Mary J.
 McKay, Mary
 McKay, Shirley
 McKay, Stella
 Newlee
 Shank
 Shinkle
 Skaling
 Van Skike
 Strickland
 Tracy
 Wing
 Woodward





James
Anderson
Calderwood
Clark, Carol
Clark, Corliss
Covert
Devore
DuRette
Griffith
Gunnedal
Hermanek
Holt
Keller
Marcy
Netz
Orcutt
Thompson
Woldt
Calbom
Ewing
Fredrickson
Fretz
German
Kells
Lindstrom
Matthews
McCurdy
Sackett
Thelander
Byrd
Cooper
Dickson
Estes
Findley
Friedrichs
Fry
Hood
Kohagen
Lilburn
Lucas
Russell
Sechrist
Snyder
Swanson
Talcott
Todd
Wirth
Zimmerman
Bolland
Burkhart
Carlson
Dimond
Ferrin
Hunt
Lowery
Mason
Macaulay
McClelland
McClelland
Morgan
Murray
Stowaser
Thomas
Tonsteth
Valliant
Wiley
Wilson
Wonderlick
Wrisley
Young



OFFICERS

Mrs. Frank James - - - - - *House Mother*
 Esther Gunnedal - - - - - *President*
 Betty Keller - - - - - *Vice President*
 Elvy Fredrickson - - - - - *Manager*

SENIORS

Chloe Anderson
 Dorothy Calderwood
 Carol Clark
 Corliss Clark
 Grace Covert
 Esther Mae Devore
 Joan DuRette
 Gwen Griffith
 Esther Gunnedal

Marion Hermanek
 Maxine Holt
 Betty Keller
 Bernice Marcy
 Delores Netz
 Nadine Orcutt
 Madge Thompson
 June Woldt

JUNIORS

Norma Calbom
 Margaret Ewing
 Elvy Fredrickson
 Zoe Fretz
 Sally German
 Frances Kells

Muriel Lindstrom
 Ruth Matthews
 Iras McCurdy
 Betty Sackett
 Betty Thelander

SOPHOMORES

Peggy Byrd
 Louise Carlson
 Betty Cooper
 Darlene Dickson
 Dorothy Estes
 Eloise Findley
 June Friedrichs
 Marcia Fry
 Margaret Hood
 Jean Kohagen
 Florence Lilburn

Frances Lilburn
 Louise Lucas
 Ella Rose Mason
 Emogene Russell
 Aileen Sechrist
 LaJune Snyder
 Betty Ann Swanson
 Ann Talcott
 Eleanor Todd
 Betty Wirth
 Helen Zimmerman

FRESHMEN

Maxine Bolland
 Betty Burkhardt
 June Dimond
 Miriam Ferrin
 Shirley Hunt
 Martha Lowery
 Jacqueline Macaulay
 Silly McClelland
 Joyce McClelland
 Shirley Morgan

Elaire Murray
 Grace Stowaser
 Catherine Thomas
 Margaret Tonsteth
 Shirley Valliant
 Evelyn Wiley
 Kay Wilson
 Margaret Wonderlick
 Louise Wrisley
 Carol Young

DELTA PHI



ΔΦ



ΔΤΓ

DELTA TAU GAMMA

OFFICERS

- Aileen La Raut - - - *First semester President*
 Luella Ibach - - - *Second semester President*
 Luree Norris - - - *First semester Vice President*
 Ruth Cramer - - - *Second semester Vice President*

SENIORS

- Ruth Cramer Hazel Magec
 Luann Green Mary Elizabeth Ross
 Aileen La Raut

SOPHOMORES

- Jean Boyce Luella Ibach
 Ruth Cookingham Nadene Mathews

FRESHMEN

- Doris Lee Anderson Isabelle Rawson
 Ruth Doerr Connie Reed
 Doris Doughton Lois Robinson
 Dorothea Graham Minnie Thackara
 Rosalie Hoover Helen Thomas
 Jacqueline Macauley Shirley Valliant
 Mary Prime

Cramer
 Green
 La Raut
 Magec



Ross
 Boyce
 Cookingham
 Ibach



Mathews
 Anderson
 Doerr
 Doughton



Graham
 Hoover
 Macauley
 Prime



Rawson
 Reed
 Robinson
 Thackara



Thomas
 Valliant





Anderson
Bernau
Bobhannon
Hunt
Moses
Queseth
Achor, R.
Achor, W.
Barrick
Bonney
Gallagher
Gardner
Huntley
May

Olson
Riches
Robertson
Van Winkle
Voigt
Walker
Faminow

Haight
Herrick
Miller
Newgent
Olson
Putnam
Stacer

Wicks
Wilson
Barnick
Barett
Davis
Deiner
East

Ellis
Espy
Hawes
Kern
Kister
Macy

Mything
Nystrom
Schaad
Sheldon
Anderson
Bradshaw
Burnet
Chusid

Droorbaugh
Ebert
Fitzgerald
Gardner
Grimberg
Jones

Kelly
Link
Malde
Merriott
Neal
Strickfaden
Shosmaker
Simmons

Walker
Weaver
Wicks



OFFICERS

Claude Barrick - - - First semester President
Jack Walker - - - Second semester President
Peter Faminow - - - First semester Vice President
Wally Olson - - - Second semester Vice President
Dan Moses - - - - - - - - - Manager

GRADUATES

Steve Anderson Dan Moses
Fred Bernau Cecil Queseth
Jack Bobhannon

SENIORS

Richard Achor Ralph May
Winfield Achor Wallace Olson
Claude Barrick Tom Riches
Louis Bonney Jim Robertson
Sumner Gallagher Robert Voigt
John Gardner Joe Van Winkle
Kenneth Hunt Kenneth Huntley
Eugene Huntley

JUNIORS

Peter Faminow Art Olson
Tinkham Haight Davis Putnam
William Herrick Richard Stacer
Ervin Miller Clarence Wicks
Robert Newgent Arthur Wilson

SOPHOMORES

Don Barnick Richard Kern
Allan Barett Gilbert Kister
Tom Davis John Macy
Garrel Deiner Ed Mything
Robert East Stanton Nystrom
Vinton Ellis Ben Schaad
Richard Espy Paul Sheldon
Don Hawes

FRESHMEN

Matt Anderson Harold Malde
Fred Bradshaw William Merriott
Jack Burnet Jim Neal
Monte Chusid Jack Strickfaden
Daryl Droorbaugh Jim Sherwood
Jim Fitzgerald Charles Shosmaker
Preston Ebert Robert Simmons
Robert Gardner Robert Walker
Melvin Grimberg Robert Weaver
William Jones Richard Wicks
David Kelly Clint Williams
Don Link

ALPHA PSI DELTA



Α Ψ Δ



KAPPA GAMMA RHO

OFFICERS

Cliff Stewart - - - *First semester President*
 Jack Hedgcock - - *Second semester President*
 Bruce Van Wyngarden - *First semester Vice Pres.*
 Don Burton - - - *Second semester Vice President*
 Loren Hicks - - - - *First semester Manager*
 Howard Blanding - - - *Second semester Manager*

GRADUATES

Mervin Brink Robert Campbell

SENIORS

Robert Blanding Orville Ragsdale
 Robert Daggett Arthur Rathkey
 Jack Hedgcock Carl Seibel
 Carroll Heim Clifford Stewart
 Loren Hicks Rollo Stowaser
 Harry Irvine Oscar Swenson
 Maurice Kreutz Bruce Van Wyngarden
 Kenneth Lilly Ward Walker

JUNIORS

Gilbert Leiser Herbert Simpson
 Stuart McElhinny Winston Taylor

SOPHOMORES

Robert Albert Robert Lee
 Amnon Adams Ronald Runyan
 Howard Blanding Samuel Orcutt
 Donald Burton Robert Perry
 Mark Hatfield Raymond Short
 William Hobbs

FRESHMEN

Donald Ackley Gene Olsen
 Marvin Bazzel Ronald Runyan
 Beady Gallagher Lyle Sheldon
 Dale Gollifur Syd Southwick
 Marvin Hanson Dick Strellman
 Wally Johnson David Tesarick
 James W. Morrell

Campbell
 Daggett
 Hedgcock
 Heim
 Hicks

Irvine
 Kreutz
 Lilly
 Ragsdale
 Rathkey

Stewart
 Swenson
 Taylor
 Van Wyngarden
 Walker

Leiser
 Simpson
 Albert
 Burton
 Hatfield

Hobbs
 Lee
 Mattson
 Orcutt
 Perry

Ackley
 Bazzel
 Coan
 Gallihar
 Gallagher

Hansen
 Johnson
 Morrell
 Garson
 Short

Southwick
 Strellman
 Tesarick





Blodgett
Dunbar
Hardman
Hill
LaVatta



Adams, R.
Waltz
Adams, H.
Hadley
Martin



McWain
Nesbitt
Bettis
Coddling
Coyner



DesJardin
Frasola
Graham
Harrold
Reischl



Smith
Toolson
Whitmore
Sherman
Anderson



Casted
Findley
Glasse, Jack
Glasse, Jim
Habernicht



Jones
Johnson
Kunke
Ratschffe
Sloper



Summers
Smith
White
Wills



OFFICERS

Mark Waltz - - - - - *President*
Wes McWain - - - - - *Vice President*
Corydon Blodgett - - - - - *Second Vice President*
Keith Sherman - - - - - *Manager*

GRADUATES

George LaVatta

SENIORS

Corydon Blodgett Clifford Hill
Malcom Dunbar Keith Sherman
Arnold Hardman Mark Waltz

JUNIORS

Harold Adams Westly McWain
Wayne Hadley Bill Nesbitt
John Martin

SOPHOMORES

Wade Bettis Elmer Harrold
George Coddling Keith Reischl
Craig Coyner Kenneth Smith
Arnold DesJardin Earl Toolson
Anthony Frasola Bill Whitmore
Fred Graham

FRESHMEN

Richard Adams Ed Johnson
Jerry Anderson Gordon Kunkle
Dick Castiel Bob Ratschffe
Bob Findley Wilmer Richey
Jack Glasse Val Sloper
James Glasse Vern Summers
Marvin Goodman Bob Smith
Earl Hampton Lyle White
Bill Habernicht Lawrence Wills
Ted Jones John Williams

SIGMA TAU



ΣΤ



Barbara Hollingworth, Dorothy Tate, Gayle Dennison, Dean Dahl, Esther Gunnesdal, Betty Keller, Dorothy Moore.

Intersorority Council

The Intersorority council, composed of the president and first vice president of each sorority and Dean Dahl, meets once a month to consider the programs, problems and policies of the three houses. Rush rules are set up and enforced by this group. They also plan any events which concern and require the cooperation of all three organizations, such as sorority open house.

Due to the war situation, this year the council has attempted to coordinate social functions of the sororities, having one large affair instead of three separate ones. This plan proved very successful in the Intersorority formal held at the armory, March 28. "Moonlight Cocktail" was the theme of the affair at which the gals and their dates danced to the music of Dick Day's orchestra. A blue and white canopy covered the ceiling and huge cocktail glasses were found to be overflowing with balloon bubbles.

The officers of the council this year were: President, Esther Gunnesdal; secretary, Barbara Hollingworth; and treasurer, Gayle Dennison.



Three representatives from each of the three fraternities on the campus, Alpha Psi Delta, Kappa Gamma Rho, and Sigma Tau, comprise the Interfraternity Council. Dr. Gatke is the advisor and chairman of the group. The past year John Martin and Bob Perry have acted as secretary during the first and second semesters, respectively.

The Council's chief function is to control and regulate interfraternity affairs. Especially concerned with problems of rushing, social functions, and scholarship, the Council seeks to erase any differences between the houses. A dinner meeting is held each month, the fraternities alternating as hosts to the Council.

Fraternity Open House, sponsored and coordinated by the group, was a highly successful event. It served to increase and develop interest in the fraternities on the campus and among the townspeople.

With the advent of World War II, fraternities anticipate increasingly difficult times. Cognizant of this fact, the Council plans to discuss the problems certain to arise during the war effort and to solve them cooperatively as best as possible.

Interfraternity Council



Seated: Mark Walte, Dr. Gatke, Jack Walker, Howard Blanding, Dan Moses; Standing: Wes McWain, Keith Sherman, Wally Olson, Loren Hicks, Bill Hobbs, Bob Perry.



HONORARIES

FIRST ROW

Farns
 Daggett
 Walker
 Robertson
 Housatani
 Miller
 Lilly

THIRD ROW

Bennett
 Moore
 Ragdale
 Deiser
 Rogers
 Bailey
 Kelly
 Oida
 Wessner
 Betts
 Hampton

SECOND ROW

Fratola
 Connors
 White
 Rader
 Jacobson
 Toolaan

FOURTH ROW

Medley
 Barrett
 Galtcher
 Macy
 Barbour
 Ogden

**OFFICERS**

President - - - - - Gordon Moore
Vice President - - - - - Paul Cookingham
Secretary-Treasurer - - - - - Ken Lilly

The "W" club seems not to have been the dreaded menace-to-freshmen that it was in former years; sometimes the freshmen almost forgot they were around, perhaps because of the Hawaiian trip. But at any rate, during the year they accomplished such things as the inevitable freshmen initiation, programs for the high school basketball tournament, an occasional banquet at the Golden Pheasant, and they did the dirty work of clean-up for May Week End. Besides that, sometime the last of April they went on a picnic—stag of course.

"W" Club



TOP:

Winfield Achor
 Sumner Gallaher
 Loren Hicks
 Ralph May
 Orville Ragsdale
 Cliff Stewart
 Bruce Van Wyngarden

BOTTOM:

Jack Walker
 Mark Waltz
 Bob Hamilton
 Wes McWain
 Dick Stacer
 Clarence Wicks
 Arthur Wilson

OFFICERS

President - - - - - Cliff Stewart
 Vice President - - - - - Orville Ragsdale
 Secretary - - - - - Loren Hicks
 Treasurer - - - - - Winfield Achor

Fifteen years ago Blue Key, national honorary society, was organized at Willamette to honor junior and senior men who are outstanding in scholarship, character, and school service. Through the years it has continued to gain prestige and has won a responsible place on the campus. Gene Sevillier of KSLM, personal friend of Walter Winchell and former script writer for Jack Benny, captivated his audience with his witty anecdotes at this year's Father and Son banquet, traditionally sponsored by Blue Key. Ralph May, student body president, was toastmaster, and Bob Hamilton, general chairman for the affair, held Friday of Homecoming.

Blue Key

DELTA THETA PHI

Anderson
Bohannon
Brink
Casswell
DeArmond
DeSully
Foley
LaVotto
Quesseth
Wilson
Barnou
Carter
McCallum
Parks
Simpil
Thomas
Constable
Hendley
Johnson
Lytle
Reynolds
Walker

TAU KAPPA ALPHA

Adams
Bellis
Dickson
Jones
Map
McWain
Moore
Olds
Roberts
Russell
Waters
Wicks
Babe
Thompson



Delta Theta Phi

An active function of law school is Delta Theta Phi fraternity, the largest national legal fraternity. Willamette's chapter, the Wolverton Senate, held weekly luncheon meetings at downtown restaurants, during which different members of the fraternity would speak.

OFFICERS

President - - - - - Glenn Olds
Vice President - - - - - Dorothy Moore
Secretary-Treasurer - Marjorie Weber

Tau Kappa Alpha

National speech honorary, Tau Kappa Alpha, included the choicest members of the forensics squad—all of them at least two-year students in speech. They sponsor inter-class and inter-collegiate debate and oratorical contests; meet formally but twice a year.

OFFICERS

Dean - - - - - Mervin W. Brink
Vice Dean - - - - - Bethune M. deSully
Tribune - - - - - Robert Campbell
Clerk of Exchequer - - - - - Jack Bohannon
Clerk of Rolls - - - - - Verne McCallum
Master of Ritual - - - - - William Thomas
Bailiff - - - - - Otto Skopil



SCIENCE CLUB

Austin
 Barton
 Case
 Clark
 Davis
 Denison
 Hagg
 Hauer
 Henderson
 Judd
 Maide
 Mitchell
 Steiger
 Taylor
 Wickline

Eason
 Frederickson
 Gullaher
 Gardner
 Gile
 Green
 Morgan
 Penney, J.
 Penney, R.
 Parnick
 Rathkey
 Springer

Y W C A

Cramer
 Ross
 Matthes
 Patton
 Davis

Bach
 Green
 Hornberger
 Miller
 Hermann

Moore
 Short
 Laney
 Payne

Science Club

To promote interest in the field of science, the organization known as the Math club in previous years has become the Science club. The group visited the State Engineering land and the Bradley telescope during the year.

OFFICERS

President - - - - Robert Penney
 Vice President - - - Robert Parbrick
 Secretary - - - - Elvy Fredrickson

OFFICERS

President - - - - Grace Cramer
 Vice President - - Mary Elizabeth Ross
 Secretary - - - - Wilma Matthes
 Treasurer - - - - June Patton

YWCA

Seabeck week marks the beginning of the YW year. Back to school in the fall Frosh Week activities are important. During the year come the silver fashion tea, coed-counselor party, YM-YW retreat, varied membership meetings, and the May morning breakfast.

YMCA

Marker
Kurtis
Carpent
Froelich
Glasco
Rosenblum
Perry
Gills
Burtan

VESPERS

Cain
Moser
Overland
Nelson
Wrasley
Baldern
Sackett
Dunn
Wilson
Loomis
Forsen
Adkins
Thomas
Mullberg
Wenover
Libby
Yonquist
Fries
Pemberton
Carlson
Tuplin
Simpson
Griffith
Dresser
Morse
Van Dyke
Husbell
Tulley



YMCA

OFFICERS

President - - - - - Tom Hall
Vice President - - - - - Loren Hicks
Secretary - - - - - Ward Miles
Treasurer - - - - - Dix Moser

The campus YMCA has enjoyed a full, well-rounded program. The highlight of the organization's year was the sending of Don Tasker to represent Willamette and the Y at the National Student Assembly at Oxford, Ohio. The group also undertook to raise money for the World Student Service Fund.

University Vespers

Beginning with their reception welcoming University students on the first Sunday of the school year, and following through to the senior banquet honoring the graduating class in the spring, University Vespers serves the college. The Christian spirit of Willamette is strengthened by Vespers through worship services, student forums, problem discussions conducted by outstanding Christian leaders and get-togethers at Cookie Jar.

OFFICERS

President - - - Leo Baldwin
Vice President - - June Woldt
Secretary - - - Jean Jackson
Treasurer - - - Hide Tomita



CAP AND GOWN

*Chloe Anderson
 Esther Gunnedal
 Elizabeth Hamilton
 Barbara Hollingworth
 Dorothy Moore*

PHYSICAL EDUCATION CLUB

*Chuck Furno
 Jean Moore
 Ted Ojala*

*Marshall Barbour
 Phyllis Gueffroy
 Mary Bennett
 Allan Barrett*

Cap and Gown

Five senior women are selected on the basis of personality, service, scholarship and Christian character to membership in Cap and Gown. The group sponsors an ice cream social for the student body to help maintain Chresto and during the year gives banquets honoring the coeds achieving high scholarship.

OFFICERS

*President - - - - Chloe Anderson
 Vice President - - - Esther Gunnedal
 Secretary-Treasurer - Barbara Hollingworth
 Finance Secretary - Elizabeth Hamilton
 Historian - - - - - Dorothy Moore*

Physical Education Club

With all P. E. majors eligible for membership, the Physical Education club seeks to promote an interest in athletic activities and to demonstrate the advantages and enjoyment to be derived from sports. Mr. Lestle J. Sparks acts as advisor to the group.

OFFICERS

*President - - - - - Marshall Barbour
 Secretary - - - - - Jean Moore*

THETA ALPHA PHI

Barton
 Bradgett
 Du Rette
 Gaffie
 Hardman
 Minor
 Phillips
 Schlatterer
 Zahra

James
 McWain
 Morke
 Murhee
 Matthews



MU PHI EPSILON

Hermanek
 Martin
 Jackson
 Lilburn
 Duncan
 Denton
 MacHirron

Hall
 Knight
 Brown
 Eness

Theta Alpha Phi

The various Little Theater productions of this year as well as the annual Homecoming play were sponsored by Theta Alpha Phi, national honorary dramatic fraternity. Eligibility for membership includes active participation in the production of at least five plays.

OFFICERS

President - - - - Westly McWain
Secretary - - - - Ruth Matthews
Treasurer - - - - Dr. Gafke

OFFICERS

President - - - Marion Hermanek
Vice President - - Belle Brown Elmer
Recording Secretary - - Ruth Grist
Treasurer - - - Gayle Findley
Historian - - - Mary Schultz Duncan
Alumni Secretary - - - Clara Eness
Chaplain - - - - Mary Denton
Warden - - - - Helin MacHirron

Mu Phi Epsilon

The campus chapter of Mu Phi Epsilon installed Dr. and Mrs. C. S. Knopf as patron and patroness at their annual Father's Banquet. Membership in the campus chapter of the national music honor society is elective from junior and senior women who are outstanding music majors with high scholastic standing.

INTERNATIONAL RELATIONS CLUB

OFFICERS

| | | |
|----------------------------|-----------|---------------|
| <i>President</i> | - - - - - | RICHARD WICKS |
| <i>Vice President</i> | - - - - - | NANCY AUSTIN |
| <i>Secretary</i> | - - - - - | BETTY SACKETT |
| <i>Discussion Chairman</i> | - - - - - | PETER FAMINOW |

Organized for the purpose of discussing world events, the International Relations Club is made up of progressive students who share a common interest in current affairs and our foreign relations. It was organized late in the year, but nevertheless had several successful discussions concerning world problems of vital interest to its members.

At the first meeting this spring the group were the guests of Dean and Mrs. Schulze at their home. Following a discussion of the problem of world peace, led by Peter Faminow, the club adjourned to out-of-doors. There a delicious meal, served by Mrs. Schulze, was enjoyed.

Although an International Club has existed on the campus in former years, this discussion group is a new departure for clubs of its type, interested in foreign countries, for it considers the problems concerning our international relations. With the present organization as a basis, it is hoped that this group will become one of the most active on the campus next year. Dean Schulze is the advisor.



ADVERTISING





APPRECIATION OF OUR ADVERTISERS



The following merchants are continually contributing to our school publications, and are therefore deserving of our appreciation and patronage. Without the support of these men it would have been impossible to produce a book of this size. With this fact in mind, we are grateful to our advertisers and urge that you give them your support.

Ralph Schlesinger,
Publications Manager



Congratulations, Willamette . . .

ONE HUNDRED YEARS YOUNG!

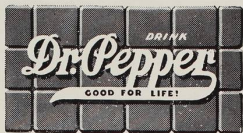
Miller's takes this opportunity to congratulate Willamette University upon its one hundred years' service as an educational institution which has contributed much to the better way of living not only to this community, but to the whole country at large. We, of Salem, have followed closely the activities of Willamette during our twenty-two years of business life and cherish, with all our heart, the friendly associations of which we have been privileged to participate.

*Let Us All Hope That Willamette's Next
One Hundred Years Will Be as Successful.*





DRINK



IN BOTTLES



DR. PEPPER BOTTLING COMPANY

Salem

For
Vital
Energy



920 South Commercial Street

Phone 8101

The Best Place
To Buy the Best *Candy*

*You See It Made . . .
You Know It's Fresh!*



Gay's

135 North High Street

80% OF ACTIONS
ARE CONTROLLED
by ... SIGHT

● You need correct vision for good work, for safety and for comfort . . . Eyes that need glasses need expert fitting with the kind of glasses that will help them most . . . For example, the modern UNIVIS BIFOCALS provide clearer and more comfortable vision than average bifocal wearers ever expected to enjoy again . . . Let your eyes have the benefit of the best that modern optical science has developed for them.

Young Men . . .
Become engaged to be married!



● So of course your jeweler is alert to obtain attractive rings for you. How well we have succeeded in the exclusive new

Diamond Ring of Romance

You will find your answer

POMEROY & KEENE

Willamette's Official Jewelers

379 State Street



*Breakfast
Specials*



Lunches



Dinner

*Private
Rooms*



*for
Banquets
and
Parties*

FOUNTAIN

440 State Street

Phone 5016

WE REDEDICATE ourselves and our 1600 stores on our 40th anniversary to the great job of helping American families to continue to live well for less.

THE PENNEY WAY is the thrifty way—the thrifty way is the American way.



Penney's
I. C. PENNEY CO., INC.

NORTH PACIFIC COLLEGE OF OREGON

School of Dentistry

Courses of Training for Dental and
Medical Assistants and Laboratory
Technicians.

◀ PORTLAND, OREGON

THE SPORTSMAN'S STORE

CLIFF PARKER

Sporting Goods



"TENSIONED-AWLESS"
RACKET RESTRINGING

- Guns . . .
- Ammunition . . .
- Fishing Tackle . . .
- Athletic Goods . . .

JOHNSON OUTBOARD MOTORS

372 State Street, Salem

Phone 6042

The New Home
of the
Capital City
Laundry
and Dry Cleaning

"The Best in the West"



SALEM, OREGON

Typewriters

All Makes

- Corona Portable
- Remington Portable
- Royal Portable
- Underwood Portable



Sell - Rent - Swap - Repair

Roer Typewriter Exchange

Phone 6773

456 State Street

The Man's Shop



Silver Creek
Falls

*The Store of Style, Quality and
Value for the University Man.*

416 State Street

Salem, Oregon



Flowers

Always the Latest and Best . . .

BREITHAUPT'S, Florist

Telephone 9195

Say (Brite-Hop)

447 Court Street



Popular . . .
because it's Good



Baked in Salem by
Cherry City Baking Co.

Salem's
Jewelry
Headquarters



ALLAN L. STEVENS

STEVENS & SON

CREDIT

Jeweler & Opticians

339 COURT

Near
Commercial

New Location

Army & Navy Store

OFFER THE FINEST SELECTION IN

- Slacks
- Shoes
- Shirts
- Loafer Jackets
- Sweaters
- Hats
- Cords
- Riding Habits

Army & Navy Store

233 North Commercial



COMPLIMENTS
OF

Meier & Frank Co.

FIFTH, SIXTH, MORRISON AND ALDER
PORTLAND'S OWN STORE



S & N Clothiers

Clothes for Men and Young Men
At Popular Prices

456 State Street

BOSLER Electric

- *Electrical Installations*
- *Fluorescent Lighting*
- *Motor Sales and Repairs*

236 STATE

TELEPHONE 7822

*Always a
Choice
Selection*

F
L
O
W
E
R
S

"FROSTY" OLSON

Court and High Street
Telephone 7166

Congratulations Willamette!

On your 100th anniversary we not only congratulate you but request the privilege of calling to your attention the close link that binds our two institutions.

Dr. W. H. Willson, father-in-law of Mr. J. K. Gill, gave the land on which your institution is located and Chloe Clark Wilson, his wife, was one of your first instructors.

These facts — remembered a century later — do bind us to you and we are proud of the connection. Congratulations again on your 100th year which happens to be our 75th.

The J. K. Gill Co.

E. W. Fifth Avenue at Stark

Portland, Oregon

Kuhn's Shoe Repairing and Hat Service

"We Rebuild 'Em"

464 Court Street

Phone 9576

The New Blue Bird Restaurant



For Grads and Undergrads!



Why Buy a Cat in the Bag?

Young Fellows that go places wear Bishop's Clothes for smart styling and quality.

Nine Out of 10 Choose

Bishop's Suits and Sport Togs

Here you will find the West's finest and most complete selections.

BISHOP'S

Congratulations on Your Centennial Year

A. E. Doyle & Associate Architects

N. H. Crowell, A. I. A.
P. Belluschi, A. I. A.
D. M. Jack, Manager

2040 S. W. Jefferson
Portland, Oregon



GREYHOUND

Wherever you live, or want to go, Greyhound will take you there in comfort, economy and pleasure. You see more, save more and enjoy more by Greyhound bus.

SAVE YOUR CAR AND TIRES
Take the bus and conserve vital materials America needs to win the war. Greyhound service makes this patriotic duty a real pleasure.

from Salem
One Round
Way Trip

PORTLAND . . \$ 1.00 \$ 1.60
SAN FRANCISCO 9.20 16.55
LOS ANGELES . 14.60 26.25

Salem Depot: Senator Hotel
Phone 4151



GREYHOUND

"Money . . . in a Hurry"



Personal Loans for All Needs

THERE is no red tape, no embarrassing investigations. No delay when you come to us for a personal loan—and we make it so easy for you to pay it back in convenient amounts.

State Finance Co.

A Home-owned Institution

344 State Street

Salem, Oregon

Phone 9261

Lic. No. 5-216 M222

Salem Laundry Company



The Home of
GOOD LAUNDERING
and
DRY CLEANING

WEIDER'S SALEM
LAUNDRY COMPANY

Phone 9125

263 South High

HOTEL MARION

Commercial and Ferry Street Salem, Oregon

GILBERT O. MADISON, Manager

A CHADWICK OPERATED HOTEL

- Special weekly and monthly rates given on application.
- Rooms for meetings, banquets and dancing.
- Remodeled, new furniture and equipment added.
- Modern Coffee Shop
Open 6 a. m. to 9 p. m.
- Delicious food at moderate prices.
- Dining service for special luncheons, dinners and dances.
- Headquarters for service clubs, conventions.

BLOCH'S

Golden Rule Store

for

Your Shoes, Skirts, Sweaters, Trousers

A YOUNG MEN'S AND WOMEN'S

Student Store

Exclusive Ready-to-Wear

THE PRICE
SHOE CO.

135 N. Liberty Street
SALEM, OREGON

Quisenberry's
Central Pharmacy

Guardian Building
410 State Street

You Know

There is something about The Spa in Salem that sets it apart from the average. Its friendly atmosphere is famous.

With your help,
F. G. MYERS.

The Chadwick Operated HOTELS

**McCredie Hot
Mineral Springs
Resort**

McCredit Springs, Oregon

Hotel Senator
Salem, Oregon

Hotel Oregon
Eugene, Oregon
W. A. Cummings, Manager

Redwoods Hotel
Grants Pass, Oregon
Macklin Robinson, Manager

Hotel Jackson
Medford, Oregon
Cedric Reaney, Manager



ACKNOWLEDGMENT . . .

- PHOTOGRAPHY—*Kennell-Ellis*
- ENGRAVING—*Beaver Engraving Company*
- PRINTING—*Statesman Publishing Company*
- LITHOGRAPHY—*James, Kerns, and Abbott*
- COVERS—*Molloy Cover Company*
- BINDING—*Davis and Holman*

Oregon's Oldest
Banking Headquarters
CONGRATULATES
Willamette University
on its
100th ANNIVERSARY

* * * *

Ladd & Bush - Salem Branch
United States National Bank

Head Office—Portland

MEMBER FEDERAL DEPOSIT INSURANCE CORPORATION



Have Fun on your Vacation!

Sure vacations are fun.
But to have the most fun,
come to Sears for the Best
for Less.



*Sears Feature a
Complete Line of
Vacation Equipment*

- Saddlery and Riding
- Tennis and Golf
- Baseball and Softball
- Fishing and Boating
- Miscellaneous Sport-
ing Goods



Sears Roebuck
and Company
484 State St. Salem

Metropolitan Store

Bargains in . . .

- NOTIONS
- GIFTS
- TOILETRIES
- SCHOOL SUPPLIES

136 North Commercial Street

BROWN'S *Can't Increase Your Salary... BUT,*



**WE CAN SHOW
YOU HOW TO SOLVE YOUR**

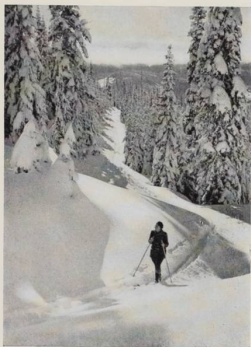
Gift Problem

BY BUYING ON CONVENIENT CREDIT TERMS

BROWN'S, Salem's Leading Jewelers & Opticians

184 NORTH LIBERTY

420 COURT



HOTEL ARGO and Dining Room

BANQUETS INVITED

The Best for Meals and Rooms

Chemeketa at Commercial

Neskoziwin Beach



SWIMMING

On the Pacific Ocean
66 miles from Salem

Merrill D. Ohling INSURANCE



275 State Street

Phone 9494

KAY'S Coat and Dress Shop

Late Fashions

Individually Selected
Popular Prices

460 State Street

Salem, Oregon

Model Food Market

EDWARD SCHUNKE
Manager Grocery Dept.

W. F. PERLICH
Manager Meat Dept.

MISS HELEN BARRETT
Manager Catering Dept.

- *Free Delivery and*
- *Monthly Account Service*

THREE TRUNK LINES

Telephone 4111 Salem, Oregon 275 N. High Street

Do You Have EYE Trouble?

If there is any probability that your eyes are not in the best of condition, see us today.

Morris Optical Co.

444 STATE STREET

Also Offices in Silverton and Eugene



SALEM, OREGON



*Good Food at
Reasonable Prices*

The Grill

"The Biggest Little Place in Town"

Our Motto: Service, Quality, Cleanliness

Phone 9014

Opposite City Hall
264 North High Street

Preserve and Protect

Your valuable class notes, papers or magazines by having them permanently bound.

★

Capital City Bindery

Ruling - Printing - Binding

Capital Business College

- BOOKKEEPING
- BOOKKEEPING MACHINES
- CALCULATING MACHINES
- STENOGRAPHIC
- SECRETARIAL COURSES

Special Subjects or Full Courses

SALEM, OREGON

Nelson Building Phone 5987 381 Cheneketa St.

The Moderne

Your Favorite Gift Store



Court and Commercial

Phone 3808

Phone 3121 Established 1915 A Home Owned Plant

City Ice Works

Pure Crystal Ice

- Cold Storage—Individual Lockers
- Refrigerators—Distilled Water
- Automatic Burner Oil and Stove Oil

"Quality" Ice Cream

Frank N. Waters, Prop.

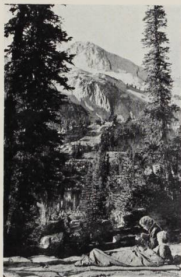
1551 Center Street

Willett's Capital Drug Store

A Friendly Store



Corner State and Liberty Streets



Pade's Grocery and Market



DELIVERY SERVICE

1244 State Street

PHONE 9135

Valley Motor Co.

Salem, Oregon



- Service
- Sales

The Klasic Photo Shop

- A Kodak Store
- Greeting Cards

PHOTO FINISHING
Wholesale and Retail

546 State Street
Salem, Oregon



ROYAL TYPEWRITERS

WILLAMETTE STUDENTS KNOW!

That Needham's offer the finest selection of school supplies . . . that they can get their typewriters, fountain pens, note books, etc., at reasonable prices for standard brands of nationally-known manufacturers.

Needham's take pride in having served the classes from the Willamette Campus for many years.

Needham's Book Store

465 State Street

Salem, Oregon

State Street
Grocery and Market

Fresh Fruits and Vegetables
Fancy and Staple Groceries Quality Meats

30-Day Charge Accounts
FREE DELIVERY

Scellars & Foley, Inc.
General Insurance Agency

The Premium Won't Break You
... A Loss Might!

143 South Liberty Street
PHONE 6001

SALEM, OREGON



Bertelson & Son

The Name to Know in

Printing

PHONE 7109
294 Chemeketa

SALEM, OREGON

The Golden Pheasant



Fine Foods

Sensibly Priced

Two Forty Eight North Liberty

Congratulations
On Your Centennial



Montgomery Ward
and Company

155 North Liberty Street

Salem, Oregon

Hartman Bros.

JEWELERS



Corner State and Liberty

Make the YMCA Your Home

While You Are at Willamette U.

- 45 MODERN ROOMS
- CLOSE TO THE CAMPUS
- "THE UNIVERSITY MEN'S DORM"
- SWIMMING
- BASKETBALL
- HANDBALL
- VOLLEYBALL
- BOXING
- WRESTLING



Furniture of Distinction

Drapery China Stoves
Curtains Gifts Refrigerators

A LITTLE DOWN ON A BIG BILL

The Gevurtz Furniture Co.

275 N. Liberty Street Salem, Ore.
Phone 4615

Coon's "Top Hat"

*Featuring the Best Hamburgers,
Milkshakes and Coffee in Town*

MR. AND MRS. BILL COON
Proprietors

1275 State Street Salem, Oregon

Centennial Congratulations From . . .

The First National Bank
of Portland
Salem Branch

The Oldest National Bank
West of the Rocky Mountains

TO

Willamette University

The Oldest University
West of the Rocky Mountains

THIS COVER IS A

Molloy Cover

Made by

The S. K. Smith Company
CHICAGO, ILL.

SAM BABCOCK, Pacific Coast Representative
Glendale, California



- *We are grateful to the following business men who have aided in making this book a more attractive issue than would have been possible without their sponsorship.*

- PHYSICIANS AND SURGEONS—

Drs. Morse, Power, Buren, Miller, Lancefield and King
Drs. Thompson, Lebold and Fortmiller
Steeves-Hockett Clinic.

- EYE, EAR, NOSE, AND THROAT—

Drs. Findley, Clement, Baum, Thompson and
Dunham

- DENTISTS—

Dr. Kinley K. Adams
Drs. Blatchford, Blatchford and Lewis
Dr. F. D. Voigt



Beaver Engraving Co.
Portland, Oregon



Mt. Jefferson

Statesman Publishing Co.

Printers . . . Publishers

215 South Commercial Street
SALEM, OREGON

OUR THANKS . . .

- • • to ALLAN RINEHART of Beaver Engraving Company for his excellent suggestions, for his sincere enthusiasm, and for skilful workmanship.
- • • to MILTON BELL of James Kern & Abbott for his invaluable guidance in the lithograph process section, and for his keen interest in achieving an outstanding yearbook.
- • • to EDWIN E. THOMAS of the Statesman Publishing Company for his intelligent and essential advice and for fine topography.
- • • to WARD PRESCOTT and ECHO YEATER of Kennell-Ellis studios for their genial cooperation that extended far beyond any obligations.
- • • to LAURENCE LEWTON, for sketches and art work; to SAM BABCOCK, for covers; and to the STATESMAN, for various pictures.

Arthur Wilson,

Editor

Ralph Schlesinger,

Publications' Manager

Senior Activities

ACHESON, HELEN

Boise, Idaho
Boise High School
Major—Chemistry.
Delta Phi 1, 2, 3; Tennis, woman's varsity—2, 3.

ACHOR, RICHARD W.

Oregon City, Oregon
Major—Biology—Senior Scholar.
Alpha Psi Delta, Secretary 2; Pledgmaster 3, Second Vice President 4; Class Treasurer 2; Intramural Sports; Band 1; Y.M.C.A. Student Honor Code Committee 2, 3.

ACHOR, WINFIELD R.

Oregon City, Oregon
Oregon City High School
Major—Public and Business Administration—Senior Scholar.
Alpha Psi Delta, Pledgmaster 3, Member at Large 2; Rep. to Executive Council 2; Intramural Sports 1, 2, 3, 4; Intramural Debate 1; Band 1; Y.M.C.A., Treasurer 2, President 3; Blue Key 3, 4; International Relations Club 4; Collegian 1; Constitutional Revision Committee 4; Who's Who Among Students in American Universities and Colleges 3, 4.

ANDERSON, CHLOE

Salem, Oregon
Salem High School
Major—Business Administration.
Delta Phi, Manager 3; A.S.B. Secretary 4; Class Secretary 1; Cap and Gown, President 4; May Queen 4.

ANDERSON, MARGARET L.

Portland, Oregon
Major—French.

BALDWIN, LEO

Fort Shaw, Montana
Simms High School, Simms, Montana
Major—Sociology.
Intramural Sports; A Cappella Choir 3; Library Committee 2, 3, 4.

BARKER, MARY L.

Waldport, Oregon
Waldport High School
Major—English Literature—Senior Scholar.
Alpha Phi Alpha, Vice President 3; Class Secretary 4; Y.W.C.A., Secretary 2; Classical Club President 2.

BARRICK, CLAUDE

Tillamook, Oregon
Tillamook High School
Major—Biology—Senior Scholar—Zoology.
Alpha Psi Delta, Second Vice President 2, President 4; Intramural Sports 1, 2; Biology club; Honor Code Committee President 4.

BARTON, RICHARD PAUL

Salem, Oregon
Salem High School
Major—Speech—Senior Scholar.
Theta Alpha Phi; Math Club; Forensics 3, 4; Dramatics 2, 3, 4.

BOWMAN, CARL

Portland, Oregon
Franklin High School
Major—Music.
Band 1, 2, 3, 4; Philharmonic Choir 2, 3, 4.

BOYDSTON, BETTY

Dallas, Oregon
Dallas High School
Major—English.
Band 1; Y.W.C.A.

BLANDING, ROBERT

Portland, Oregon
Roosevelt High School
Major—Business Administration.
Transfer from Albany College 4; Kappa Gamma Rho; Collegian 4; Wal-lulah 4; Oregon Federation of College Leaders 2, 3; Who's Who Among Students in American Universities and Colleges 3.

BLODGETT, CORYDON

Salem, Oregon
Salem High School
Major—Speech—Dramatics.
Sigma Tau, Vice President 2, 3; Dramatics, Theta Alpha Phi; Choir, Intramural.

BREUSER, HILMA

Rainier, Oregon
Rainier Union High School
Major—Sociology.
Collegian 1; Y.W.C.A. Cabinet 3.

BROWN, CAROLYN

Salem, Oregon
Salem High School
Major—Music.
Alpha Phi Alpha; Choir.

BURRELL, ALICE

Salem, Oregon
Salem High School
Major—Home Economics—Senior Scholar.
Transferred from Oregon State College 3.

BYRNE, BARBARA

Vale, Oregon
Vale High School
Major—Sociology.
Alpha Phi Alpha.

CHIRGWIN, HELEN MARY

Medford, Oregon
Medford High School
Major—French—Senior Scholar.
Vespers; Library Committee 4.

CLARK, CAROL

Salem, Oregon
Salem High School
Major—French—Senior Scholar.
Delta Phi; W.A.A. 1; A Cappella Choir 1, 3, 4; Y.W.C.A.

CLARK, CORLISS

Salem, Oregon
Salem High School
Major—Sociology.
Delta Tau Gamma 1, 2, Vice President 2, Alumni Secretary 1; Delta Phi 2, 3, 4; Philharmonic Choir 2; Y.W.C.A., Science Club 4; Tacks 2.

COMPTON, BARBARA

Salem, Oregon
Salem High School
Major—Speech.
Transferred from St. Helen's Hall J. C. 2; Beta Chi; Forensics Debate, Ex-tempore 3; Dramatics 3.

CORPUZ, MACARIO T.

Bauang, La Union, Philippine Islands
Grant High School, Portland, Oregon
Major—Sociology.
Transferred from Oregon State College 3; Y.M.C.A.

COVERT, GRACE

Salem, Oregon
Salem High School
Major—History.
Delta Phi; Collegian, Society Editor 4; Class Secretary 3.

CRAMER, GRACE

Newberg, Oregon
Newberg High School
Major—History.
Y.W.C.A. Service Chairman 2, Vice President 3, President 4.

CRAMER, RUTH

Newberg, Oregon
Newberg High School
Major—German—Senior Scholar.
Transferred from Oregon College of Education, Monmouth, 3; Delta Tau Gamma 4, First Vice President 4; Y.W.C.A.; Who's Who in American Universities and Colleges.

CULLENS, JUANITA

Fort Lewis, Washington
Major—English.
Alpha Phi Alpha.

DAGGETT, BOB

St. Helens, Oregon
St. Helens High School
Major—History.
Kappa Gamma Rho; Class Treasurer 4; Basketball 1, 2, 3, 4; Baseball 1, 2, 3, 4; Intramural Football, "W" Club.

DEAN, BOB

Woodburn, Oregon
Major—Mathematics.

DEVORE, ESTHER MAE

Salem, Oregon
Salem High School
Major—Sociology—Senior Scholar.
Delta Phi, Recording Secretary 3; W.A.A. 1; A Cappella Choir 1; Y.W.C.A. Secretary 2; Anthropology Society 3, 4; Library Committee, Chairman 4.

Senior Activities

DILLON, FRANCES

Portland, Oregon
Franklin High School
Major—English.
Transferred from Albany 4.

DU RETTE, JOAN

Gervais, Oregon
Gervais High School
Major—Speech.
Delta Phi, A.S.B. Secretary 2; Dramatics 4; Y.W.C.A.; Theta Alpha Phi 4.

ELMER, R. WILLIAM

Jefferson, Oregon
Franklin High School, Portland, Ore.
Major—Sociology.
Transferred from Albany College 2.

EVANS, WILLIAM

Salem, Oregon
Salem High School
Major—Mathematics, Physics, Chemistry—Senior Scholar—Chem.
Math Club 1, 2, 3; Science Club 4.

FITZSIMONS, MAURICE

Salem, Oregon
Salem High School
Major—Business Administration.
Yell Leader 1; Intramural Sports 1, 2, 3, 4; Y.M.C.A. 1, 2.

GALLAHER, SUMNER

Salem, Oregon
Salem High School
Major—Mathematics.
Alpha Psi Delta, Member-at-large, Pledgmaster; Honor Code Committee, Chairman; Basketball, Tennis, Intramural; Second Vice President A.S.B.; Blue Key; Y.M.C.A. 2, 3, 4; Mathematics Club.

GARDNER, JOHN

Pinehurst, Idaho
Kellogg High School, Kellogg, Idaho
Major—Sociology.
Transferred from Central College of Education, Elensburg, Wash.; 3; Alpha Psi Delta, Member-at-large 4; Track 3, 4; Intramural Sports 3, 4; "W" Club 3, 4; Y.M.C.A. 3, 4.

GILLIS, DOROTHY

Great Falls, Montana
Great Falls High School
Major—Music.
Transferred from College of Great Falls 4; Delta Tau Gamma 4.

GRIFFITH, GWEN

Olympia, Washington
Major—Physical Education—Senior Scholar.
Delta Phi, Second Vice President 4; W.A.A. 1, 2, 3, 4; W.A.A. Manager 3; Y.W.C.A. 1; Delta Tau Gamma 1, 2; Physical Education Club 2, 3, 4.

GILMORE, JESSE LEE

Grants Pass, Oregon
Grants Pass High School
Major—History—Senior Scholar.
Tennis 1, 2, 3, 4; Frosh Basketball 1; Intramural Sports 2, 3; "W" Club 1, 2, 3, 4.

GREEN, LUANN

Salem, Oregon
Madison High School, Madison, Kas.
Major—Sociology.
Delta Tau Gamma; Collegian 3; Choir 1; Science Club 4; Anthropological Society 3; Y.W.C.A. 1, 2, 3, 4.

GREENWOOD, DOROTHEA

Springfield, Oregon
Salem High School
Salem, Oregon
Major—Art.
Beta Chi, Secretary-treasurer 4; Paint Spots 1; Math Club 2; Y.W.C.A. 2, 3.

GUNNESDAL, ESTHER

Portland, Oregon
Jefferson High School, Portland, Ore.
Major—Business Administration.
Delta Phi, President 4; Class Secretary 1; Choir 1; Cap and Gown 4; Vice President 4; Inter-sorority Council 4; President 4; Collegian 2, 3; Society Editor 3.

HADLEY, WAYNE

Longview, Washington
R. A. Long High School
Major—Business Administration.
Transferred from Lower Columbia Junior College, Longview 3; Sigma Tau; Intramural Sports 3, 4; Delta Theta Phi 4; Y.M.C.A. 3, 4; Honor Code Committee 4.

HAGY, FOSTER

Salem, Oregon
Major—Chemistry.

HALL, TOM

Goldendale, Washington
Cottage Grove High School
Cottage Grove, Oregon
Major—Sociology.
Intramural Sports 1, 2, 3, 4; A Cappella Choir 1, 2, 3; President 3; Y.M.C.A. 1, 2, 3; Publicity Chairman 2; President 4; Who's Who In American Universities and Colleges 4.

HAMILTON, ELIZABETH

Seattle, Washington
Lincoln High School
Major—English Literature—Senior Scholar.
Lausanne Hall, Vice President 3; President 4; Collegian 3; Cap and Gown; Who's Who Among Students in American Universities and Colleges 4.

HARDMAN, ARNOLD R.

Olympia, Washington
Olympia High School
Major—English.
Sigma Tau, Vice President 3; Yell Leader 2; Intramural Sports; Theta Alpha Phi; Willamette Songmen 1; A Cappella Choir 3, 4.

HARRIS, FRANCES ROSALIE

Spokane, Washington
Lewis and Clark High School
Major—Classical Civilization and Literature.
Beta Chi; Little Theater 1; Assistant to the Registrar 2, 3, 4.

HEIM, CHARLES CARROLL

Redmond, Oregon
Redmond High School
Major—Chemistry.
Kappa Gamma Rho; Mathematics Club 1, 2, 3, 4; Y.M.C.A. 1, 2, 3.

HERMANEK, MARION

The Dalles, Oregon
The Dalles High School
Major—Music—Senior Scholar.
Transferred from Oberlin College 3; Delta Phi; Song Queen 3; Class Vice President 4; Mu Phi Epsilon 3, 4; President 4; String Trio 3; Choir 1.

HICKS, LOREN

Salem, Oregon
Salem High School
Major—Economics—Senior Scholar.
Kappa Gamma Rho, Vice President 2, 3; Manager 4; Class Treasurer 1; Intramural Sports 1, 2; Blue Key 3, 4; Y.M.C.A. 1, 2, 3, 4; Vice President 3; Constitutional Revisional Committee 4.

HIEBERT, ALVIN

Salem, Oregon
Major—History.

HILL, CLIFFORD

Salem, Oregon
Major—Biology.
Sigma Tau.

HOLLINGWORTH, BARBARA

Portland, Oregon
Grant High School
Major—Public Administration.
Beta Chi, Manager 3; President 4; Class Vice President 2; Cap and Gown; Little Theater 1; Y.W.C.A. 1; Lausanne Hall Vice President 1; Who's Who In American Universities and Colleges 4.

HOLT, MAXINE

Salem, Oregon
Salem High School
Major—Art.
Delta Phi; Class Council 1, 3, Class Vice President 3; Collegian 2, 3, 4.

Senior Activities

HUNT, KENNETH

Brooks, Oregon
Salem High School
Major—Sociology.
Alpha Psi Delta; Anthropological Society.

HUNTLEY, GENE

Salem, Oregon
Salem High School
Major—Economics.
Alpha Psi Delta; Collegian 1, 2, 3; Wallulah 2.

IRVINE, HARRY S.

Portland, Oregon
Franklin High School
Major—Biology.
Transferred from Multnomah Junior College 2; Kappa Gamma Rho, Vice President 4; Intramural Sports 2, 3, 4; A Cappella Choir 2, 4; Y.M.C.A. 2, 3.

JONES, HELEN NEWLAND

Salem, Oregon
Bend High School, Bend, Oregon
Major—English-Drama—Senior Scholar in Drama.
Beta Chi; Tau Kappa Alpha 2, 3, 4; Theta Alpha Phi 3, 4; Forensics 1, 2, 3, 4; Varsity Debate 2, 3; Extemp 2; Drama 2, 3, 4; President Little Theater 2.

JORGENSEN, JAMES

Jefferson, Oregon
Jefferson High School
Major—Biology.

KELLAR, BETTY MARIE

Portland, Oregon
Grant High School
Major—Public Administration.
Delta Phi, Social Treasurer 3; Vice President 4; Class Vice President 3; Wallulah 2; Collegian 3; Y.W.C.A. 1, 2; Inter-sorority Council 4; Who's Who Among Students in American Universities and Colleges.

LANEY, DORIS

Yakima, Washington
Yakima High School
Major—Sociology.
Transferred from Yakima Valley Junior College 3; Beta Chi, Sergeant-at-arms 4; Y.W.C.A. 3, 4; Membership Chairman 4.

LA RAUT, AILEEN

Roseburg, Oregon
Wilbur High School, Wilbur, Oregon
Major—Physical Education.
Delta Tau Gamma, Vice President 3; President 4; W.A.A. 1, 2, 3, 4; Secretary 3; Library Committee 4.

LILLY, KENNETH

La Grande, Oregon
La Grande High School
Major—Business Administration.
Kappa Gamma Rho; Basketball 1, 2, 3, 4; Track 1, 2, 3, 4; "W" Club, Secretary-Treasurer.

McINTYRE, LUCILLE

Portland, Oregon
Grant High School
Major—History.
Transferred from Multnomah College 3; Beta Chi; Collegian; International club.

MARCY, BERNICE

Portland, Oregon
Major—Religion—Senior Scholar.
Delta Phi.

MAGEE, HAZEL

Salem, Oregon
Salem High School
Major—Social Science.
Delta Tau Gamma 1, 2, 3, 4; Vice President 3; National Treasurer 4; President 4; W.A.A. 1, 2, 3, 4; Forensic 4; Collegian 4; Wallulah 4; Little Theater 1; Tacks 2; Library Committee 4.

MAY, RALPH

Denver, Colorado
East Denver High School
Major—Political Science—Senior Scholar.
Alpha Psi Delta, Member-at-large 3; A.S.B. President 4; Wallulah 3; Business Manager 3; Class President 1; Blue Key 4; Tau Kappa Alpha 4; Forensics, Y.M.C.A. 2, 3; President 2; Oregon Federation of College Leaders Convention 3, 4; Pacific Student Presidents' Association Convention 3, 4.

MEALEY, ROBERT

Salem, Oregon
Salem High School
Major—Music.

MINOR, BARBARA J.

Portland, Oregon
Franklin High School
Major—Drama, English Literature.
Transferred from St. Helens Hall Junior College 4; Beta Chi, trio 3, 4; Theta Alpha Phi 4; Dramatics 3, 4; May Week End Play 3, 4; One Act Play Contest, director 3, winner 4.

MITCHELL, BERTHA BOYLE

Murtaugh, Idaho
Murtaugh High School
Major—Sociology.
Transferred from Gooding College 2; Forensics 2; Debate 2; Y.W.C.A. 2; Wesleyans 2; Vespers 2; Fellowship of Reconciliation 4.

MITCHELL, JOHN E.

Rupert, Idaho
Rupert High School
Major—Psychology, Philosophy.
Transferred from Gooding College 2.

MOORE, DOROTHY

Portland, Oregon
Grant High School
Major—History—Senior Scholar.
Beta Chi, Vice President, Wallulah 2; Tau Kappa Alpha 2, 3, 4; Vice President 4; Cap and Gown 4; Forensics 2, 3; Y.W.C.A. 1, 2; Little Theater 1, 2; Secretary 2; International Relations Club 4; Honor Code Committee 2, 3, 4; Inter-Sorority Council 4; Who's Who Among Students in American Universities and Colleges 4.

MOORE, GORDON HUGHES

Tigard, Oregon
Tigard High School
Major—Business Administration.
Varsity Football, Intramural Basketball; Letter's Club, President 4.

MOORE, LOIS

Great Falls, Montana
Great Falls High School
Major—Journalism and Social Science.
Transferred from College of Great Falls 4; Delta Tau Gamma 4; Collegian 4; Wallulah 4; W.A.A. 4; Vespers 4; International Club 4.

MORGAN, MADELINE

Stayton, Oregon
Salem High School, Salem, Oregon
Major—Physical Education—Senior Scholar.
Alpha Phi Alpha, Manager 3, 4; W.A.A. 1, 2, 3, 4; All-Star Basketball 1, 2, 3; Physical Education Club 1, 2, 3, 4; Secretary 3.

MORRIS, ANNE

Cave Junction, Oregon
Amity Union High School, Amity, Ore.
Major—English—Senior Scholar.
Alpha Phi Alpha, Second Vice President 3; A Cappella Choir 4; Philharmonic Choir 1.

NETZ, DELORES

Salem, Oregon
Salem High School
Major—Biology—Senior Scholar.
Delta Phi, Recording Secretary 4; Class Secretary 3; Y.W.C.A. 4; Anthropological Society 2.

NORRIS, RUTH LURIE

Salem, Oregon
Salem High School
Major—French.
Delta Tau Gamma, Choir 1; Y.W.C.A. 3, 4; Centennial Committee.

OLDS, GLENN

Sherwood, Oregon
Estacada Union High School
Estacada, Oregon
Major—Psychology and Philosophy—Senior Scholar.

Class President 1; Varsity Tennis Squad 3, 4; Freshman Basketball 1; Intramural Sports 1, 4; Tau Kappa Alpha 2, 3, 4; President; Blue Key 3, 4; Band 1; A Cappella Choir 1, 2, 3; Orchestra 1; Forensics 1, 2, 3, 4; Debate 1, 2, 3; Extempore 1, 2, 3, 4; Oratory 1, 2, 3; Second Place Pacific Forensics League 3; Second Place Western Oregon Teachers of Speech 2; Oregon Peace Impromptu 2, 3; First Place Oregon State 4; First Place Phi Delta of Western States 3; Letterman's Club 3, 4; Y.W.C.A. 1, 2, 3; Vespers 4; Honor Code Committee 3; Prep Staff 2; Iota Sigma Seminars, Ontario, Canada 3; Willamette Representative Oregon Conference Board of Education 3, 4; Who's Who Among Students in American Universities and Colleges 3, 4.

Senior Activities

ORCUTT, NADINE

Salem, Oregon
Salem High School
Major—Art and Philosophy.

Delta Phi 1, 2, 3, 4, First Vice President 3, Collegian 1, 2, Wallulah 1, 2; Class Secretary 4; Dramatics 2, Little Theater 1, 2; Anthropological Society 3; Paint Spot 1, 2, 3, Vice President 2, President 3; Homecoming Committee, 2, 3.

PALMER, HERMIE

Hermiston, Oregon
Grants Pass High School
Major—English.
Vespers; Collegian 1, 2, 3; Wallulah.

PATTON, JANE

Salem, Oregon
Salem High School
Major—English.
Delta Tau Gamma 1, 2, 3, Alumni Secretary 3; Forensics 1; Y.W.C.A. 1, 2, 3, 4, Treasurer 4.

PERSONS, MAURICE

Spokane, Washington
Major—Philosophy—Psychology.

POLLOCK, JOHN

Salem, Oregon
Major—Public Administration.

PRICE, ROBERT

Salem, Oregon
Salem High School
Major—Business Administration.
Intramural Sports 1, 2, 3, 4.

PURBRICK, ROBERT L.

Salem, Oregon
Salem High School
Major—Physics and Mathematics—Senior Scholar.
Science Club, Vice President 4.

RAGSDALE, ORVILLE

Salem, Oregon
Baker High School, Baker, Oregon
Major—Business Administration.
Kappa Gamma Rho, Class Treasurer 2, Class President 4; Basketball 2, 3, 4; Baseball 2, 3; Blue Key, Vice President 4.

RATHKEY, ARTHUR

Tennile, Oregon
Major—Chemistry.
Kappa Gamma Rho.

REEDER, NELLE

Waldport, Oregon
Reedsport High School, Reedsport, Ore.
Major—Spanish—Senior Scholar.
Y.W.C.A. 1; Willamette University Prayer League 1, 2, 3, 4, President 2, 4.

REYNOLDS, BUD

La Grande, Oregon
La Grande High School
Major—Political Science.
Football 1, 2, 3, 4, Captain 4; Delta Theta Phi; "W" Club.

ROBERTSON, JIMMY

Albany, Oregon
Albany High School
Major—Business Administration.
Alpha Psi Delta 3, 4, Member-at-Large 4; Basketball 1, 2, 3, 4; Baseball 1, 2, 3, 4; Intramural Director 4; "W" Club.

ROSS, MARY ELIZABETH

Salem, Oregon
Salem High School
Major—History.
Delta Tau Gamma 1, 2, 3, 4, Treasurer 2, Vice President 3; W.A.A. 2; Y.W.C.A. 1, 2, 3, 4, Treasurer 3, Vice President 4.

SANDERS, MARION

Portland, Oregon
Washington High School
Major—English—Senior Scholar.
Alpha Phi Alpha; Collierian 1, 2, 3, 4, Society Editor 3, Editor 4; Cap and Gown 4; Vespers 1, 2, 3, 4; International Club 2, 3; Lausanne Hall, Vice President 3; Y.W.C.A. 1, 2, 3, 4; Honor Code Committee 3; Who's Who Among Students in American Universities and Colleges 4.

SCHOOLEY, HAROLD

Salem, Oregon
Major—Chemistry.

SEIBEL, CARL

Oregon City, Oregon
Oregon City High School
Major—History.
Kappa Gamma Rho; Swimming Instructor 4; Band 1, 2; Vespers 2, 3; Y.M.C.A. 2, 3; May Weekend Play 3.

SHERMAN, KEITH

Whitefish, Montana
Whitefish Central High School
Major—History.
Sigma Tau Fraternity 1, 2, 3, 4, 5, Manager 5; Freshman Glee Manager 1; Freshman Glee Executive Committee 1, 3, 4, 5; Golf Varsity 1; Delta Theta Phi 4; Band 1, 2, 3, A Cappella Choir 3; Philharmonic Choir 1, 2, Men's Glee Club 1.

SIEGMUND, MARGARET

Salem, Oregon
Salem High School
Major—Business Administration.
Beta Chi, Secretary 4; Choir; Y.W.C.A. 2, 3.

SMITH, ELIZABETH

Portland, Oregon
Major—English.

STEPHY, ROBERT

Osburn, Idaho
Wardner High School, Kellogg, Idaho
Major—History.
Transferred from Whitworth College, Spokane, Washington 3; Collegian 4; Tennis 3.

STEWART, CLIFFORD

Great Falls, Montana
Great Falls High School
Major—Classical Civilization—Senior Scholar.
Kappa Gamma Rho, President 4; Blue Key, President 4; Basketball 1; Intramural, Class President.

STEWART, GENE

Salem, Oregon
Major—Physical Education.
Football 1, 2, 3, 4; "W" Club.

STOUDENMEYER, HENRY ROBERT

Salem, Oregon
Salem High School
Major—Business Administration.
Intramural Softball 2; Band 1, 2, 3, 4, President 3; Orchestra 4; Y.M.C.A. 1, 2, 3, 4; Math Club 2.

SWENSON, CLEO NISSEN

Albany, Oregon
Albany High School
Major—Business Administration.
Beta Chi, Manager 4, Trio 4; Class Vice President 4; May Day Princess; Choir.

SWENSON, OSCAR

Tacoma, Washington
Major—Business Administration.
Kappa Gamma Rho, Manager 4; Choir; Football 1, 2, Intramural, Class President 3.

TABOR, HALE

Cienrock, Wyoming
Gienrock-Parkerton High School
Major—History and Journalism.
Collegian 1, 2, 3, 4, Editor 4, President of Publications Board 4; Wallulah 4; Executive Council 4; Band 1, 2, 3, 4; Student Centennial Committee 4, Delegate to Oregon Federation of College Leaders at Oregon State College 4; Vespers 1, 2, Publicity Director 2; Who's Who in American Universities and Colleges 4.

THOMPSON, MADGE ELIZABETH

San Mateo, California
Vancouver High School
Vancouver, Washington
Major—English—Senior Scholar.
Transferred from Stanford University 3; Delta Phi 3, 4, Editor Delta Phi Yearbook 4; Collegian 3, 4; Wallulah 3; One Act Plays 3; Paint Spots 3.

TRIEBER, DOUGLAS J.

Mesick, Michigan
Mesick Consolidated High School
Major—Sociology.
Anthropology Club, President; Y. M. C. A. 1, 2, 4.

Senior Activities

VAN WINKLE, JOSEPH S.

Salem, Oregon
Crook County High School
Prineville, Oregon
Major—Political Science—Senior Scholar.

Transferred from American University, Washington, D.C. 4; Alpha Psi Delta; Collegian 2, 3; Sports Editor 2; Managing Editor; Intramural Sports 1, 2, 3; Forensics 1; Y.M.C.A. 1, 2, 3.

VAN WYNGARDEN, BRUCE

Salem, Oregon
Salem High School
Major—Business Administration.

Kappa Gamma Rho, Vice President 3; Collegian 2; Football 1; Basketball 1; Intramural 1, 2, 3; Blue Key; Y. M. C. A. 1; Freshman Glee Executive Committee 1.

VOIGT, BOB

Salem, Oregon
Salem High School
Major—Art—Senior Scholar.

Alpha Psi Delta 4; Class Treasurer 4; Class President 4; Collegian 1, 2, 3, 4; Intramural Sports; Band 1, 2, 3, 4; Cappella Choir 4; Dramatics 3; Y. M. C. A. 1, 2; Paint Spots, President 3; Library Committee 4; Student Centennial Committee 4; Who's Who Among Students in American Universities and Colleges 4.

WALKER, JACK

McMinnville, Oregon
McMinnville High School
Major—Political Science.

Alpha Psi Delta, First Vice President 3; President 4; Wallulah 1, 2, 3; Manager 2; Advisory Committee; Freshman Basketball 1; Intramural Sports 1, 2, 3, 4; Blue Key 3, 4; Delta Theta Phi 4.

WALKER, WARD EDWARD

Portland, Oregon
Jefferson High School
Major—Public Administration.

Transferred from Multnomah Junior College 3; Kappa Gamma Rho 3, 4; Member-at-Large; Baseball 3, 4; Intramural Sports 3, 4.

WALTZ, MARK

Forest Grove
Forest Grove High School
Major—Music.

Sigma Tau, President 4; Blue Key; Library Committee; Freshman Glee Manager 1; Freshman Glee Executive Committee; Choir, Manager 3; Yell Staff 2; Intramural; Y.M.C.A. 2, 3.

WATERS, MARJORIE

Salem, Oregon
Dallas High School, Dallas, Oregon
Major—Speech—Senior Scholar.

Beta Chi, Vice President 3; A.S.B., Vice President 4; Tau Kappa Alpha 2, 3, 4; Vice President 3; Secretary-Treasurer 4; Forensics 2, 3; Varsity Debate 2, 3; Oratory 3; Intercollegiate Forensics Association of Oregon, President 4; One Act Plays 1, 3; Homecoming Committee 4.

WICKLINE, CECIL

Warrenton, Oregon
Warrenton High School
Major—Philosophy and Psychology.

Vespers 1, 2, 3; Wesleyans 1, 2; Fellowship of Reconciliation 4.

WILSON, JAMES

Pratum, Oregon
Major—History.
Forensics 1, 2; Willamette Tournament, First Place Oratory; Linfield Tournament, First Place Men's Oratory; Pacific Forensics League, Stanford, Third Place Men's Oratory.

WILLIAMS, GLEN

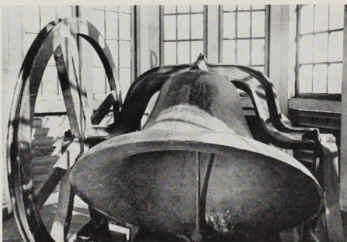
Salem, Oregon
Salem High School
Major—English.
Band 1, 2, 3, 4; President 4.

WOLDT, JUNE ELIZABETH

Portland, Oregon
High School of Commerce
Major—Sociology.
Transferred from Albany College, Portland, Oregon, 3; Delta Phi 3, 4; Corresponding Secretary 4; Class Representative 4; Collegian 3; Lausanne Hall, Second Vice President 3; President 4; Vespers 3, 4; Vice President 4; Y.W.C.A. 3; International Relations Club 4; Constitutional Revisional Committee 4; Library Committee 4; Willamette Representative to State Methodist Youth Council 3; May Day Princess 4.

ZWEMKE, BEATRICE

North Dakota
Major—Music.



INDEX

| | |
|-------------------------|-------------------------|
| Abel, Elmer | 62 |
| Acheson, Helen | 45 |
| Acheson, Mary | 62 |
| Achor, Richard | 45, 96 |
| Achor, Winfield | 45, 96, 42, 22, 101 |
| Ackley, Donald | 62, 99 |
| Adams, Harold | 14, 98, 104 |
| Adams, Jean | 57, 92 |
| Adams, Richard | 62, 98 |
| Adams, Shirley | 62 |
| Adkins, Betty | 62, 106 |
| ADMINISTRATION | 36, 37 |
| Albert, Robert | 57, 97 |
| ALPHA PHI ALPHA | 92 |
| ALPHA PSI DELTA | 96 |
| ALUMNI PRESIDENT | 36 |
| Anderson, Chloe | 41, 94, 21, 23, 50, 107 |
| Anderson, Doris Lee | 62, 91 |
| Anderson, Connie | 62 |
| Anderson, Jerry | 62, 98, 26, 61 |
| Anderson, Margaret | 45 |
| Anderson, Margaret E. | 62, 92 |
| Anderson, Merwin | 62, 96, 61 |
| Anderson, Steve | 104 |
| Andrew, Betty Jean | 62, 93 |
| Aplin, Marian | 62 |
| Appelman, Lucille | 62, 92 |
| Arnold, Dorothy | 62, 92 |
| ATHLETIC ADMINISTRATION | 69 |
| Austin, Nancy | 62, 93 |
| Austin, Willard | 14, 105 |
| Azumano, Reiko | 57 |

| | |
|--------------------|--------------------------|
| Bailey, Bob | 102 |
| Baldwin, Leo | 41, 106 |
| BAND | 31 |
| Barber, Virginia | 62, 92 |
| Barbour, Marshall | 102, 107 |
| Barker, Mary | 41, 92, 42, 43 |
| Barnick, Donald | 57, 96 |
| Barrett, Allan | 107, 102, 62, 96, 25, 61 |
| Barrick, Claude | 41, 96, 42, 22 |
| Richard Barton | 45, 42, 101, 108 |
| BASEBALL | 74, 79 |
| BASKETBALL | 74, 75 |
| Bates, Dawn | 54 |
| Bazzel, Marvin | 62, 93 |
| Bennett, Bob | 102 |
| Bennett, Mary | 62, 92, 107 |
| Bergsvik, Marjorie | 62, 92 |
| Bernau, Fred | 67, 104 |
| Bertoglio, Marian | 62 |
| BETA CHI | 93 |
| Bettis, Wade | 57, 98, 104 |
| Bisbee, Laurence | 62 |
| Blake, Janet | 62, 92 |
| Blake, Janroe | 62, 92 |
| Blake, Ralph | 62 |
| Blanding, Robert | 41, 26 |
| Blodgett, Corydon | 41, 98, 108 |
| BLUE KEY | 105 |
| BOARD OF TRUSTEES | 36 |
| Bohannon, Jack | 66, 104 |
| Bolland, Maxine | 62, 94 |
| Bonney, Louis | 41, 96, 67 |
| Bowman, Carl | 45 |
| Bowman, Vernon | 62 |
| Boyer, Jean | 57, 95 |
| Boyd, Edrull | 57 |
| Boydston, Betty | 45 |
| Bradshaw, Fred | 62, 96, 61 |
| Bressler, Marjorie | 62, 92 |
| Breuser, Hilma | 45, 106 |
| Brewster, Dwayne | 14, 93, 57 |
| Briget, Beulah | 66, 104 |
| Brink, Mervin | 66, 104 |
| Brown, Carolyn | 45, 108 |
| Brown, Geneva | 62 |
| Brown, Lyle | 54 |
| Browne, Bettie | 62, 93 |

| | |
|-----------------------------------|-----------------|
| Bruser, Maxine | 62 |
| Bryant, Bruce | 57 |
| Buchner, Willard | 57 |
| Bucureneh, Freda | 57, 92 |
| Burgess, James | 57 |
| Burget, John | 57, 92 |
| Burgoyne, Ruth | 62, 94 |
| Burkhart, Betty | 62, 96 |
| Burnet, Jack | 45, 62 |
| Burrell, Alice | 57, 97, 56, 106 |
| Burton, Don | 62, 92 |
| Burton, Dorothy | 57, 92, 56, 106 |
| BUSINESS SECRETARY | 57 |
| Butler, Lois | 62, 93 |
| Byrd, Dean | 54 |
| Byrd, Martha | 57, 94 |
| Byrd, Patricia | 57 |
| Byrd, William | 62 |
| Byrne, Barbara | 45, 92 |
| Cain, Ethel Jean | 62, 106 |
| Cake, Marion | 62 |
| Calbom, Norma | 14, 94 |
| Calderwood, Dorothy | 54, 94 |
| Cameron, Jane | 57, 93 |
| Camp, John | 62 |
| Campbell, Robert | 97, 66, 104 |
| CAP AND GOWN | 107 |
| Carkin, Jean | 62, 92 |
| Carlson, Louise | 57, 94, 106 |
| Carolan, Michael | 62 |
| Carter, Herbert | 67, 104 |
| Case, Arthur | 57, 105 |
| Castel, Richard | 62, 98 |
| Caufield, Shirley | 93 |
| CENTENNIAL CELEBRATION | 10, 11 |
| Chase, Richard | 57 |
| Chirgwin, Helen | 45, 42 |
| CHOIR | 30 |
| Clark, Carol | 45, 94 |
| Clark, Corliss | 45, 94, 105 |
| Claumann, Gilbert | 54 |
| Coan, Royce | 97 |
| Codding, George | 57, 98 |
| Coleman, Max | 62 |
| COLLEGIAN | 24 |
| Compton, Barbara | 45, 93 |
| Confer, Verle | 62 |
| Constable, George | 67, 104 |
| Conners, Cecil | 102 |
| CONSTITUTIONAL REVISION COMMITTEE | 22 |



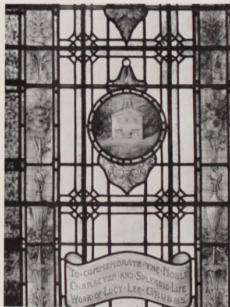
INDEX

| | |
|-------------------------|-------------------------------|
| Cookingham, Paul | 57 |
| Cookingham, Ruth | 57, 91 |
| Cooper, Betty | 57, 94 |
| Corpuz, Macario | 45, 106 |
| Cottew, Charles | 51 |
| Covert, Grace | 45, 94, 24 |
| Cox, Mary Grace | FB |
| Coyner, Craig | 57, 98 |
| Cramer, Grace | 45, 105 |
| Cramer, Ruth | 45, 95, 42 |
| Crawford, Gladys | 57, 92 |
| Crews, Marian | 62 |
| Cuddeback, Florence | 62 |
| Cullens, Dolly | 57, 92 |
| Cullens, Juanita | 45, 92 |
| Cutler, Louise | 62, 93 |
| Daggett, Robert | 45, 97, 42, 102 |
| Davis, Helen | 54, 92, 101, 106 |
| Davis, Mary Elizabeth | 62 |
| Davis, Tom | 57, 96 |
| Dean, Robert | 45, 105 |
| DEAN OF MEN | 37 |
| DEAN OF WOMEN | 37 |
| DEAN OF THE UNIVERSITY | 36 |
| De Armond, Robert | 66, 21, 104, 102 |
| DEDICATION | 4 |
| Doimer, Garrel | 57, 96 |
| DELTA PHI | 94 |
| DELTA TAU GAMMA | 95 |
| DELTA THETA PHI | 104 |
| Dennison, Gayle | 92, 22, 101 |
| Des Jardin, Arnold | 98 |
| De Sully, Bethune | 66, 104 |
| Devore Esther Mae | 45, 94, 42, 22 |
| Dickson, Darlene | 57, 94, 104 |
| Dichm, Merrett | 62 |
| Dillon, Frances | 45 |
| Dimond, June | 62, 94 |
| Duerr, Ruth | 63, 95 |
| Doolittle, Warren | 63 |
| Doughton, Doris | 63, 95 |
| Downey, June | 63 |
| Downs, Hume | 54 |
| DRAMA | 32, 33 |
| Drorbaugh, Daryl | 63, 96 |
| Duby, Caroline | 67 |
| Duffy, Florence | 63, 95 |
| Dulaney, Mary Lois | 63, 95 |
| Dunbar, Malcolm | 64, 98 |
| Du Rette, Joan | 45, 94, 108 |
| Darland, Wesley | 106 |
| Eakin, Ellen | 62 |
| Earle, June | 54 |
| East, Emma Lou | 63, 95, 22, 61 |
| East, Robert | 57, 96 |
| East, Preston | 63, 96 |
| Edgell, Allen | 54 |
| Edwards, Billy | 63 |
| Elgin, Bernice | 54, 93 |
| Elliott, Florence | 63, 92 |
| Ellingsworth, Charlotte | 45, 67 |
| Ellis, Vinton | 57, 96 |
| Elmer, William | 45 |
| Espey, Richard | 57, 96, 56 |
| Estep, Merlin | 63 |
| Estes, Dorothy | 57, 94, 56 |
| Evans, Frank | 63 |
| Evans, William | 45, 42, 105 |
| Ewing, Margaret | 54, 94 |
| EXECUTIVE COUNCIL | 21 |
| FACULTY | 58, 41 |
| Faminow, Peter | 54, 96, 22 |
| Fanger, Clifford | 57 |
| Fawk, Billy | 63 |
| Ferrin, Miriam | 63, 94, 106 |
| Findley, Eloise | 57, 94 |
| Findley, Robert | 63, 98 |
| Finney, Ruth | 57, 93, 24 |
| Fisher, Marion | 63 |
| Fitzgerald, James | 63, 96 |
| Fitzsimmons, Maurice | 15 |
| Flynn, Phyllis | 57, 93 |
| Foley, Jerome | 66, 104 |
| FORENSICS | 28, 29 |
| FOOTBALL | 70, 73 |
| Forsythe, Margaret | 63 |
| Fraiola, Tony | 57, 98, 102 |
| Francis, Marion | 63, 92 |
| FRATERNITIES | 96-98 |
| Frees, David | 63 |
| French, Richard | 54, 106 |
| Fredrickson, Elvy | 54, 94, 105 |
| FRESHMAN BASKETBALL | 81 |
| FRESHMAN CLASS | 61-65 |
| FRESHMAN INITIATION | 7 |
| FRESHMAN GLEE | 12, 13 |
| FRESHMAN OFFICERS | 61 |
| Fretz, Zoe | 54, 94 |
| Friedrichs, June | 57, 94 |
| Fries, Jean | 63, 106 |
| Fry, Marcia | 57, 94 |
| Furno, Charles | 57, 56, 102, 109 |
| FUSSER'S GUIDE | 27 |
| Gallagher, Brady | 63, 97 |
| Gallahar, Sumner | 54, 96, 21, 105, 41, 102, 103 |
| Gardner, John | 45, 96, 105 |
| Gardner, Robert | 63, 96 |
| Garson, James | 57, 97, 27 |
| Gener, Mary Jo | 54, 93, 27 |
| Genna, Vincent | 63 |
| German, Sally | 54, 94 |
| Gilbert, Norman | 54 |
| Gile, Schuyler | 57, 101 |
| Gillis, Dorothy | 45 |
| Gilmore, Jesse | 41, 42 |
| Gladden, Lois | 54, 93, 22 |
| Glasse, Jack | 63, 98, 61 |
| Glasse, Jim | 63, 98, 106 |
| Golliber, Dale | 63, 97 |
| Grabar, Jeanette | 54 |
| GRADUATE MANAGER | 37 |
| Graham, Dorothea | 57, 95 |
| Graham, Fred | 57, 98 |
| Gray, Roy | 63 |
| Green, Luann | 47, 95, 101 |
| Greenwood, Dorothea | 47, 93 |
| Griffith, Gwen | 47, 94, 42, 106 |
| Grimberg, Melville | 63 |
| Gueffroy, Phyllis | 57, 92, 107 |
| Gunnesdal, Esther | 47, 94, 107 |
| Habernicht, William | 63, 98 |
| Hackett, Russ | 63 |
| Hadley, Wayne | 47, 98, 67, 104 |
| Hagglund, Janet | 57 |
| Hagy, Foster | 47, 105 |
| Haight, Tinkham | 54, 96 |
| Hall, Marge | 54, 108 |
| Hall, Tom | 47, 106 |
| Hamilton, Elizabeth | 47, 42, 105 |
| Hamilton, Robert | 54, 53, 103, 106 |
| Hampton, Earl | 102 |
| Hanauka, George | 102 |
| Hansen, Marvin | 63, 97 |
| Hanson, Keith | 54 |
| Hartman, Arnold | 47, 98, 108 |
| Harnsberger, Glennerva | 54, 92, 105 |
| Harnsberger, La Verne | 63, 92 |
| Harris, Francis | 47, 93 |
| Harper, Joyce | 63, 93 |
| Harrold, Elmer | 57, 98 |
| Hathaway, Barbara | 63 |
| HAWAIIAN TRIP | 19 |
| Hawes, Don | 57, 96, 105 |
| Hawkins, Mary Anne | 57 |
| Hayes, Merle | 54 |
| Healy, Frank | 57 |
| Hedgecock, Jack | 97 |
| Heim, Carroll | 47, 97 |
| Henderson, Delbert | 57, 105 |

INDEX

| | |
|--------------------------|---------------------|
| Hermanek, Marion | 47, 94, 42, 43, 108 |
| Hermann, Barbara | 58, 101 |
| Herrick, Bill | 54, 96, 53 |
| Hicks, Loren | 47, 97, 42, 22, 103 |
| Hisbert, Alvin | 47 |
| Hildebrandt, Ruth | 63 |
| Hill, Clifford | 47, 98 |
| Hobbs, William | 58, 97 |
| Hollingsworth, Barbara | 47, 93, 107 |
| Holm, Betty | 54 |
| Holm, Louise | 63 |
| Holmes, Doris | 63, 92 |
| Holt, Maxine | 47, 94 |
| HOMECOMING | 8, 9 |
| HONORARIES | 101-109 |
| Hopfer, Edna Mae | 54 |
| Hood, Margaret | 58, 94 |
| Hoover, Rosalie | 63, 91 |
| Horton, Barbara | 63 |
| Hosford, Louise | 63, 92 |
| Hughell, Martha | 58, 106 |
| Hughes, Frances | 63, 92 |
| Hunt, Kenneth | 47, 96 |
| Hunt, Shirley | 63, 94 |
| Huntley, Gene | 47, 96 |
| Huston, Mary Jean | 58, 93, 16 |
| Hutchinson, Aileen | 63, 93 |
| Hutchinson, Pat | 54, 93 |
| Ibach, Luella | 58, 93, 103 |
| INTER-FRATERNITY COUNCIL | 99 |
| INTERNATIONAL CLUB | 109 |
| INTER-SORORITY COUNCIL | 99 |
| INTRAMURAL SPORTS | 82, 83 |
| Irvine, Harry | 47, 97 |
| Isaac, Robert | 14 |
| Jackson, Jean | 54, 93, 108 |
| Jackson, Stanley | 63 |
| Jacobson, Kenneth | 58, 102 |
| Jarman, Virginia | 58, 93 |
| Jeanett, Betty | 58, 93 |
| Jensen, Miriam | 53, 54, 93, 22, 23 |
| Johns, Dick | 63 |
| Johnson, Edward | 63, 98 |
| Johnson, Jan | 58, 93 |
| Johnson, Jim | 58, 98 |
| Johnson, Lawrence | 67, 100 |
| Johnson, Wallace | 63, 97 |
| Johnson, Wendell | 54 |
| Jones, Alice | 63 |
| Jones, Bill | 63, 96, 106 |
| Jones, Helen Newland | 47, 42, 108, 104 |
| Jones, Ted | 63, 98 |
| Jorgenson, James | 47 |
| Judd, Jacqueline | 58 |
| Judd, Paul | 63, 101 |
| JUNIOR CLASS | 53-55 |
| JUNIOR OFFICERS | 53 |
| KAPPA GAMMA RHO | 97 |
| Karr, Valerie | 58, 92 |
| Keller, Betty | 47, 94 |
| Kelley, Frances | 64 |
| Kells, Frances | 54, 94 |
| Kelly, David | 64, 96, 102 |
| Kern, Dick | 58, 96, 22 |
| Kester, Barbara | 54, 93 |
| Kister, Gilbert | 58, 96 |
| Knight, Virginia | 54, 103 |
| Kuhagen, Jean | 58, 94 |
| Koshmider, Dorothy | 54, 93 |
| Krebs, Betty | 64 |
| Kreutz, Maurice | 47, 97, 42 |
| Kunke, Gordon | 64, 98 |
| Kurita, Kenji | 64, 106 |
| Kurtz, David | 58 |
| Kyono, Kate | 64 |

| | |
|------------------------|----------------|
| Laney, Doris | 47, 93, 101 |
| Langford, Russell | 58 |
| La Raut, Allen | 47, 93 |
| Laughlin, Mary | 64, 93 |
| LAUSANNE HALL | 90, 91 |
| La Vatta, George | 66, 98, 104 |
| LAW SCHOOL | 66-67 |
| LAW SCHOOL OFFICERS | 66 |
| Lee, Robert | 58, 97 |
| Leek, Stewart | 58 |
| Lehman, Reba | 53 |
| Leonard, Flora Ellen | 55 |
| Lerdall, Phyllis | 64 |
| Leslie, Helen | 58 |
| Leslie, Millard | 58 |
| Leupp, Thomas | 58 |
| Lewis, Nadine | 58, 92 |
| Libby, Alice | 64, 106 |
| Libby, Paul | 58 |
| LIBRARY COMMITTEE | 22 |
| Lieser, Gilbert | 51, 97, 24 |
| Libburn, Florence | 58, 94 |
| Libburn, Frances | 58, 94 |
| Lilly, Kenneth | 47, 97, 102 |
| Lindstrom, Muriel | 51, 94, 53 |
| Link, Donald | 64, 96 |
| Livesay, Mary Margaret | 58, 106 |
| Lociven, Abe | 64 |
| Loop, Virginia | 64, 92 |
| Lovcik, Genevieve | 64 |
| Lowry, Martha | 64, 94 |
| Lucas, Louise | 58, 94, 16 |
| Lundy, Wayne | 64 |
| Luthy, George | 58 |
| Lytle, Pat | 67, 104 |
| Macaulay, Jacqueline | 64, 94, 93 |
| MacMillan, Betty | 58, 92 |
| Macy, John | 58, 96, 102 |
| Magee, Hazel | 47, 93 |
| Malde, Harold | 64, 96, 101 |
| Marcy, Bernice | 47, 94, 42 |
| Markoe, Keith | 58, 108 |
| Markoe, Kent | 58, 108, 106 |
| Martin, John | 55, 98 |
| Martin, Mary | 101 |
| Mason, Ella Rose | 58, 94 |
| Masse, Eunice | 64 |
| Matherly, James | 58 |
| Mathews, Nadene | 58, 91, 24, 26 |



INDEX

| | |
|-----------------------------|------------------------------|
| Matthes, Wilma | 55, 92, 105 |
| Matthews, Ruth | 55, 94, 24, 27, 53, 108 |
| Matson, Floyd | 58, 97 |
| Maulding, Marjorie | 64, 95, 25, 61 |
| May, Ralph | 47, 96, 42, 21, 50, 103, 104 |
| MAY WEEKEND | 16, 18 |
| McBee, Jacquelyn | 61, 64, 93 |
| McCall, Wallace | 64 |
| McCallum, Verne | 104, 67 |
| McClelland, Sally | 64, 94 |
| McClelland, Joyce | 64, 94 |
| McCardy, Iras | 55, 94 |
| McIlvenna, Ray | 55, 22 |
| McIntyre, Lucille | 47, 93 |
| McKay, Mary | 64, 93 |
| McKay, Mary Jean | 64, 93 |
| McKay, Shirley | 58, 93 |
| McKay, Stella | 55, 93 |
| McKenzie, James | 64 |
| McKinley, George | 58 |
| McKown, Robert | 47, 96 |
| McWain, Wesley | 55, 98, 103, 108, 104 |
| Mealey, Robert | 47 |
| Medley, Robert | 102 |
| Merriott, William | 64, 96 |
| Metzler, Allen | 58 |
| Miles, Ward | 58, 96 |
| Miller, Betty Lou | 64 |
| Miller, Charlotte | 58, 105 |
| Miller, Irvin | 55, 96, 103 |
| Minor, Barbara | 47, 93, 108 |
| Mitchell, Bertha | 47 |
| Mitchell, John | 47, 105 |
| Monroe, Harriett | 55, 105, 106 |
| Moore, Dorothy | 47, 107, 104, 93, 42 |
| Moore, Gordon | 47, 102 |
| Moore, Janice Jean | 55, 93, 107 |
| Moore, Lois | 107 |
| Morgan, Dennis | 55 |
| Morgan, Madeline | 47, 92, 42 |
| Morgan, Richard | 105 |
| Morgan, Shirley | 64, 94 |
| Morrill, James | 64, 97 |
| Morris, Anne | 47, 92, 92 |
| Morse, Harold | 64 |
| Moser, Dix | 58, 24, 106 |
| Moses, Dan | 67, 96 |
| Mozee, Yvonne | 64 |
| MU PHI EPSILON | 108 |
| Murray, Elaine | 64, 94 |
| Myers, Lenore | 64 |
| Mything, Edwin | 58, 96 |
| Naderman, Cleonna | 64 |
| Nast, Keith | 64 |
| Nelson, Theodora | 64, 106 |
| Nesbitt, William | 55, 98 |
| Netz, Delores | 47, 94, 42 |
| Newgent, Robert | 55, 96 |
| Newlee, Peggy | 64, 93 |
| Noland, Esther | 64 |
| Nordean, Beth | 64 |
| Nordean, Beverly | 55 |
| Nordquist, Glen | 64 |
| Norris, Luree | 49, 42, 95 |
| Nowack, Frederick | 64 |
| Nyström, Stanton | 58, 96 |
| Ogden, Stanley | 64 |
| Ogdahl, Ted | 56, 102, 107 |
| Olds, Glenn | 49, 42, 50, 102, 104, 106 |
| Olson, Art | 55, 96 |
| Olson, Olivia | 55, 92 |
| Olson, Pauline | 64, 92 |
| Olson, Wally | 55, 96 |
| Orcutt, Nadine | 49, 94, 43 |
| Orcutt, Sam | 58, 97 |
| OUT OF THE EDITOR'S DESK | 60 |
| Oye, May | 64 |
| Palmer, Hermie | 49 |
| Parmenter, Vivian | 64 |
| Park, Rupe | 67, 104 |
| Patton, Jane | 49, 105 |
| Payne, Bettliellen | 58, 106 |
| Pemberton, Margaret | 58, 106 |
| Pentney, Louis | 64, 105 |
| Pentney, Robert | 49, 42, 105 |
| PEP STAFF | 86 |
| Persons, Maurice | 49 |
| Perry, Bob | 58, 97, 21, 106 |
| Perkins, Barbara | 64, 95 |
| Peterson, John | 64 |
| Phillips, Lois | 59, 93, 25, 108 |
| PHYSICAL EDUCATION CLUB | 107 |
| Pitts, Barbara | 59, 93 |
| Pittard, George | 64 |
| Poindexter, Robert | 64 |
| Pollock, Clare Marshall | 59, 93 |
| Pollock, Jack | 49 |
| PRESIDENT OF THE UNIVERSITY | 55 |
| Preston, William | 55 |
| Price, Robert | 49 |
| Prime, Mary | 64, 95 |
| Provost, Betty | 64, 92 |
| PUBLICATIONS BOARD | 23 |
| PUBLICATIONS MANAGER | 26 |
| Parbrick, Robert | 49, 42, 105 |
| Putnam, David | 55, 96, 53 |
| Quesseth, Cecil | 66, 96, 104 |
| Ragsdale, Orville | 49, 97, 43, 102, 103 |
| Randall, Vinal | 59 |
| Ransom, Ruth | 59 |
| Ratcliffe, Robert | 64, 98 |
| Rathkey, Arthur | 49, 97, 105 |
| Rawson, Isabelle | 65, 95 |
| Reed, Connie | 65, 95 |
| Reeder, Bill | 59, 102 |
| Reeder, Nell | 49, 42 |
| Reeves, Marjorie | 65 |
| REGISTRAR | 37 |
| REGISTRATION | 6 |
| Reinson, Francis | 69 |
| Reinhard, David | 49 |
| Reischl, Keith | 59 |
| Reynolds, Bud | 49, 67, 104 |
| Roberts, Charles | 59, 104 |
| Roberts, Mary | 65 |
| Robertson, Jimmy | 49, 96, 102 |
| Robinson, Lois | 65, 95 |
| Rogers, Andy | 102 |
| Ross, Daniel | 65 |
| Ross, Mary Elizabeth | 49, 95, 105 |
| Roth, John | 65 |
| Runyan, Ronald | 65 |
| Russell, Emogene | 104, 93 |
| Ryan, Patricia | 59 |
| Sackett, Betty | 55, 94, 106 |
| Sanders, Marion | 49, 92, 42 |
| Savage, Donna Belle | 65, 92 |
| Schaad, Ben | 59, 96 |
| Schooley, Harold | 49 |
| Schlesinger, Ralph | 55, 21, 23, 26, 108 |
| Schmidt, Reeva | 55 |
| Schramm, Susanna | 59, 93 |
| SCIENCE CLUB | 105 |
| Skoppl, Otto | 67, 104 |
| Seacat, Beryl | 55, 93 |
| Sechrist, Aileen | 59, 94 |
| Seibel, Carl | 49 |
| Sehon, Margaret | 59, 95, 108 |
| Selden, Jean | 65, 92 |
| SENIOR ACTIVITIES | 155, 159 |
| SENIOR CLASS | 45-49 |
| SENIOR OFFICERS | 45 |
| SENIOR SCHOLARS | 42 |
| SENIOR STANDOUTS | 50, 51 |
| Shank, Kay | 55, 93 |
| Shaw, Norman | 55 |
| Shearer, Richard | 59 |
| Sheldon, Edgar | 59 |

INDEX

| | |
|----------------------------------|-------------------------|
| Sheldon, Lyle | 61 |
| Sheldon, Paul | 59, 96 |
| Sherman, Keith | 49, 98 |
| Sherwood, James | 65 |
| Shinkle, Pollyanna | 65, 93 |
| Shoemaker, Charles | 65, 96 |
| Short, Patricia | 55, 93, 105 |
| Short, Ray | 59, 97 |
| Siegmund, Margaret | 49, 93 |
| SIGMA TAU | 98 |
| Simmons, Madeline | 65 |
| Simmons, Robert | 65, 96 |
| Simpson, Herbert | 55, 97, 106 |
| Skaling, Patricia | 65 |
| Sloper, Val Dare | 65, 98 |
| Smith, Mrs. Eleanor | 51 |
| Smith, Elizabeth | 49 |
| Smith, Eloise | 51 |
| Smith, Kenneth | 59, 98 |
| Smith, Marjorie | 65, 92 |
| Smith, Robert | 65, 98 |
| Snyder, La June | 59, 94 |
| SOPHOMORE CLASS | 16-19 |
| SOPHOMORE OFFICERS | 57 |
| Sorensen, Glen | 59 |
| SORORITIES | 92-95 |
| Southwick, Gene | 65, 97 |
| Sparrow, Chevile | 59 |
| Spears, Sybil | 59, 93 |
| Springer, Richard | 59, 105 |
| Stacer, Richard | 55, 96, 22, 103 |
| Stark, William | 55 |
| Steed, Virginia | 55 |
| Steeves, Richard | 65 |
| Striger, Walter | 55, 105 |
| Steinbock, Abe | 65 |
| Stewart, Clifford | 49, 97, 42, 103 |
| Stewart, Gene | 49, 42 |
| Stoudenmeyer, Henry | 49 |
| Stowasser, Grace | 65, 94 |
| Strellman, Richard | 65, 97 |
| Strickfaden, Jack | 65, 96 |
| Strickland, Nancy | 59, 93 |
| STUDENT HANDBOOK | 27 |
| Stuyts, Louise | 65 |
| Summers, Vernon | 65, 98 |
| Swanson, Betty Ann | 59, 94 |
| Swenson, Cloe Nissen | 49, 93, 43 |
| Swenson, Oscar | 49, 97 |
| Tabor, Hale | 49, 21, 23, 24 |
| Talcott, Ann | 59, 94 |
| Tanaka, Henry | 59, 106 |
| Tasker, Don | 59, 106 |
| Tate, Dorothy | 55, 92 |
| TAU KAPPA ALPHA | 104 |
| Taylor, Robert | 59, 97, 103 |
| Taylor, Winston | 55, 97, 106 |
| TENNIS | 80 |
| Tesarik, David | 65, 97, 106 |
| Thackara, Minnie | 65, 95 |
| Thelander, Betty | 55, 94 |
| THETA ALPHA PHI | 108 |
| Thomas, Catharine | 65, 94, 61, 106 |
| Thomas, Helen | 65, 93 |
| Thomas, William | 67, 104 |
| Thompson, Madge | 49, 94, 42 |
| Thompson, Ruthanne | 59, 93 |
| Thostrud, Allen | 59 |
| Todd, Eleanor | 59, 94, 22, 21, 16 |
| Toews, Jacob John | 65 |
| Tomita, Hide | 59 |
| Tonseth, Margaret | 65, 94 |
| Toonson, Earl | 59, 98, 102 |
| Torgeson, Kenneth | 59 |
| TRACK | 76-77 |
| Tracy, Pat | 59, 93 |
| Treiber, Douglas | 49 |
| Tweat, Mark | 65 |
| Uyenugi, Edward | 65 |
| Valliant, Shirley | 65, 94, 95 |
| Van Skike, Jean | 65, 93, 106 |
| Van Winkle, Joe | 42, 96, 49 |
| Van Wyngarden, Bruce | 49, 97, 103 |
| VESPER | 106 |
| VICE PRESIDENT OF THE UNIVERSITY | 36 |
| Viesko, Barbara | 55, 92 |
| Voigt, Bob | 49, 96, 42, 43 |
| W. A. A. | 84 |
| Walden, Al | 59 |
| Walker, Jack | 49, 96, 67, 103, 104 |
| Walker, Robert | 65, 96 |
| Walker, Ward | 49, 97, 102 |
| WALLULAH | 25 |
| Walz, Mark | 49, 98, 103 |
| Watanabe, Paul | 67 |
| Waters, Marge | 49, 93, 42, 21, 51, 104 |
| W Club | 102 |
| Weaver, Martha | 65, 106 |
| Weaver, Robert | 65, 96, 61 |
| Weber, John | 59 |
| Weber, Marjorie | 59, 92 |
| Wegner, Donald | 59, 102 |
| Wells, Beverly | 65 |
| Wertz, Dale | 65 |
| West, Don | 66 |
| White, Lyle | 65, 98 |
| White, Pat | 102 |
| Whitmore, Bill | 59, 98 |
| Wickline, Cecil | 49, 105 |
| Wicks, Clarence | 55, 103 |
| Wicks, Richard | 65, 96, 21, 22 |
| Wiley, Evelyn | 65, 94 |
| Williams, Glen | 49 |
| Williams, Leland | 59 |
| Williams, Leonard | 59 |
| Wils, Laurence | 65, 98 |
| Wilson, Arthur | 55, 96, 21, 23, 21, 103 |
| Wilson, Gordon | 66, 104 |
| Wilson, James | 55 |
| Wilson, Kathryn | 65, 94, 25 |
| Wilson, Mary Helen | 59, 106 |
| Wing, Jean | 65, 93 |
| Wirth, Betty | 59, 94 |
| Woldt, June | 49, 94, 21, 22, 51 |
| WOMEN'S ATHLETICS | 84, 85 |
| Wonderlick, Margaret | 65, 94 |
| Woodward, Charlotte | 65, 93, 24 |
| Wooten, Marjorie | 59 |
| Wrisley, Louise | 65, 94, 106 |
| Y. M. C. A. | 105 |
| Yoshizawa, Yoshi | 55 |
| Young, Carol | 65, 94 |
| Y. W. C. A. | 106 |
| Zimmerman, Helen | 59, 94 |
| Zwenske, Beatrice | 49 |



Advertising Index

| | | | |
|--------------------------|-----|---------------------------------|-----|
| Arden Farms | 115 | Meier & Frank Co. | 119 |
| Army and Navy Store | 119 | Metropolitan Store | 125 |
| Beaver Engraving Co. | 130 | Miller's | 114 |
| Bertelson and Son | 128 | Model Food Market | 126 |
| Bishop's | 121 | The Moderne | 126 |
| Bloch's Golden Rule | 123 | Montgomery Ward Co. | 128 |
| Blue Bird | 120 | Morris Optical Co. | 126 |
| Bosler Electric | 120 | Needham's | 127 |
| Breithaupt's | 118 | Neskowin Beach | 125 |
| Brown's | 121 | North Pacific College of Oregon | 116 |
| Capital Business College | 126 | Merrill D. Ohling | 125 |
| Capital City Bindery | 126 | Frosty D. Olson | 120 |
| Capital City Laundry | 117 | Pade's | 127 |
| Chadwick Hotels | 123 | Cliff Parker's | 117 |
| Cherry City Baking Co. | 118 | Penney's | 116 |
| City Ice Works | 127 | Dr. Pepper | 115 |
| A. E. Doyle | 121 | Pomeroy & Keene | 115 |
| The First National Bank | 129 | Price's | 123 |
| Gay's | 135 | Professional Men's Page | 131 |
| Gevartz | 129 | Quisenberry's | 123 |
| J. K. Gill Co. | 120 | Quelle | 116 |
| The Golden Pheasant | 128 | Roem's | 117 |
| Greyhound | 121 | Scellars & Foley, Inc. | 128 |
| The Grill | 126 | Sears and Roebuck | 124 |
| Hartman Bros. | 128 | S & N Clothiers | 120 |
| Hotel Argo | 125 | The Spa | 125 |
| Hotel Marion | 123 | State Finance | 121 |
| Kay's | 125 | State Street Market | 128 |
| The Klasic Photo Shop | 127 | Top Hat | 129 |
| Kuhn's | 120 | Valley Motor | 127 |
| Ladd & Bush | 124 | Weider's | 122 |
| Molloy | 129 | Willett's | 127 |
| The Man's Shop | 117 | Y. M. C. A. | 129 |



THIS BOOK DOES
NOT LEAVE
THE LIBRARY

