

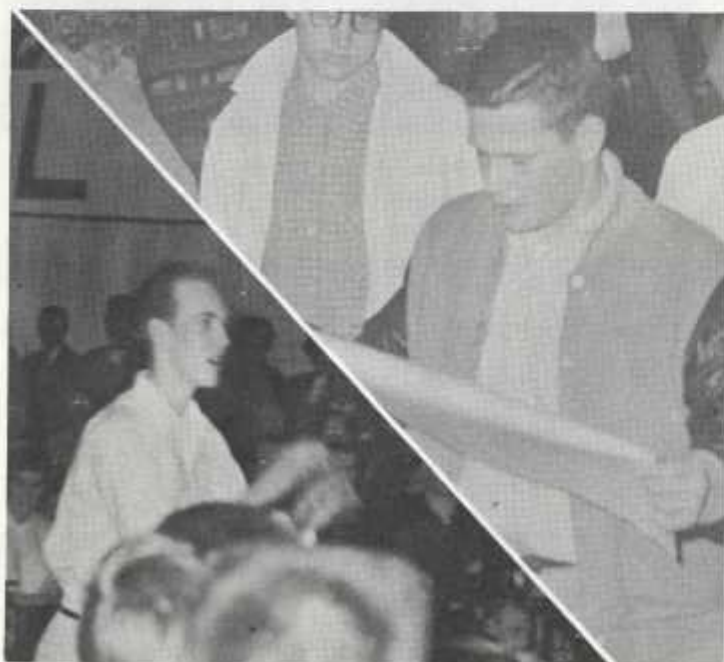
47th Annual Freshman

March 19th

1955



Freshman Glee lives up to its name as the class of 1958 sings "Jason Daddy." Writing the winning music was Dave Louthan, who collaborated with Carolyn Reynolds and Connie Clark on the words. Accompanying the class were Geneva Russell and Ron Kingsley.



Directing the winning formation of a swaying oxcart in red and brown against a white background was George Hoyt.

BELOW:

Dave Louthan, Freshman songleader, directs the class in singing the traditional encore after presentation of the Glee banner.



STAMPEDE! Setting a new record for traveling the length of the gym the Freshmen rush the Glee banner. Chairs, pianos, and upperclassmen were merely obstacles to be brushed aside from the instant Dr. Schultze said "Freshmen!"

Preparation...



After four days practice the Sophomores work to perfect their formation in the gym. The Eyes of Jason Lee saw them to second place.



Risers are manhandled into position by the Stage committee headed by Bob Braddy assisted by Bill Jackson.



Formation leaders George Hoyt, Bill Farr, Bob Alfred, and Volney Sigmund ponder a suggestion.



Dress rehearsal, ending a week of practice, finds Senior accompanist Keith Mirick stifling a yawn. The beating heart was broken by the end of "55's" three year second place streak.



At five in the morning the sleepy-eyed Freshmen exhibit varied emotions.



Every gym practice drew interested spectators to spy out the opposition's plans. Developing ability furnished cause for comment and discussion.

For...



Challenge Assembly furnishes a Freshman prediction of things to come.



Don Miller and Ron Hershberger, Sophomore and Junior song-leaders try to look interested in Keith Miricks rendition of the Senior song "Live and Learn" for which he wrote the music.



"Pivot; two, three, four." Ill fated Juniors practice marching.



Turning the tables on the upper classman the Freshmen produce Senior President Keith Mirick as their hostage at the Challenge Assembly.



"Spirit of 58." An intrepid little band of Seniors makes a brave showing at the Challenge Assembly.



Freshman President Wayne Carr following his triumphant entry issues the challenge.

... Enactment



Sophomores with "Facin' Jason" won second place. Flossy Hodge, Tom Loree and Sue Pratt wrote the words which were set to music by Tricia Gordon and Martin Wolf. Piano accompaniment was provided by Gary Monical, and Martin Wolf.



Mac Baker, Glee Manager, provided excellent guidance for the Freshman class and made possible a very successful Glee. His description of the preparatory activities for Glee furnished a keynote for an evening of outstanding entertainment. His leadership will serve as an example for future Glee Managers.

In their final Glee the Seniors slipped to third place, trailing the Sophs by only one point. Judy Fullager and Keith Mirick's composition "Live and Learn" offered sage advice to the lower classes. They were accompanied by Jean Turnbull and Keith Mirick.



of...



Retaining firm hold on the last place willed them by the class of "53" were the Juniors. Their envelope formation and song "Dear Folks" written by Dale Gustafson, Marilyn Parker, Ron Hershberger and Bill Bjorkman with music by Ron Hershberger and Paul Ackerman turned out to contain bad news. Paul Ackerman and Margaret Huson were accompanists.

The Senior Class solemnly marches in to its fourth and final Glee.

Specially honored at the 47th annual Glee were past Glee Managers. Mac Baker led the applause for 10 of these honored guests.



Repercussions

From Blue Monday



Winnie & friends Cavorting in the 'Cavern'.



A well dressed Dean.



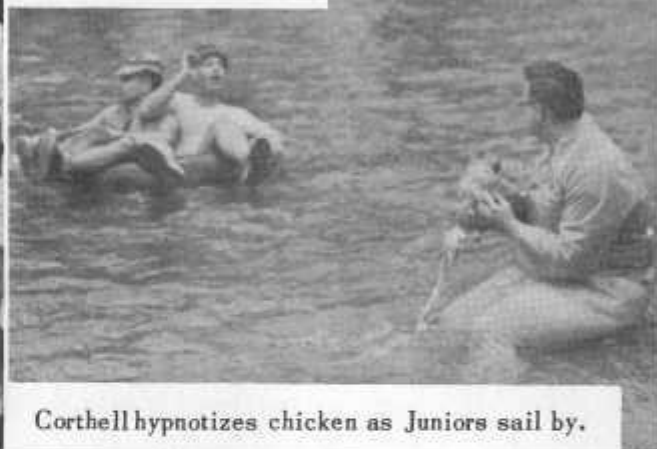
Eggs a la Renshaw.



Clarine Woolery tries the Phi Delt Showers.



"The Yolk's on you."



Corthell hypnotizes chicken as Juniors sail by.



"Bubbles Harms"

Dick Boynton gives us a Blue Monday Highspot.



Jim Mercer pays tribute to the Classics.

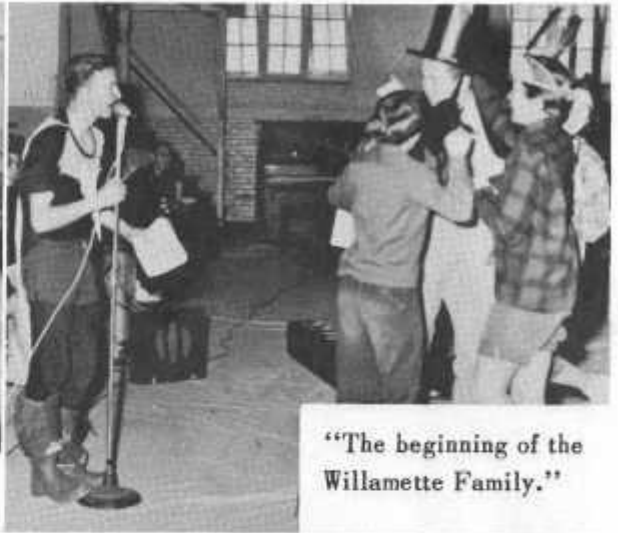


"Rock that Oxcart!"

Reminders



"And in conclusion the Blue Monday winners are..."



"The beginning of the Willamette Family."



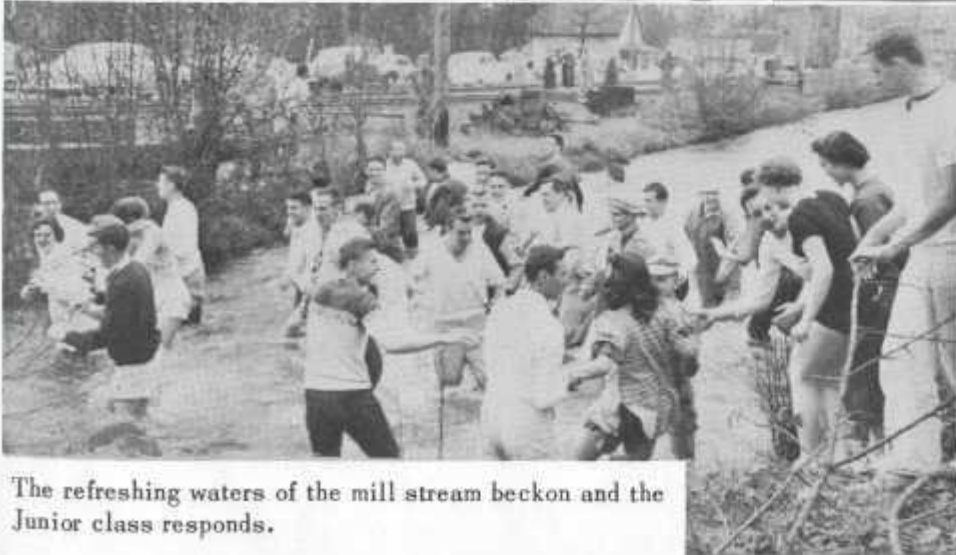
A spectator's view of the audience.



A "brief" message from Doctor Schulze.



Tompson and Payne entertain in the interim.



The refreshing waters of the mill stream beckon and the Junior class responds.



Steeves and Howard pay the price of defeat.

BEHIND THE SCENES



Bill Walsh
Assistant
Glee Manager



Mac Baker
Glee Manager



Nancy Groth
Secretary



Maureen Day
Backdrop



Lowell Nichols
Lighting



The General Committee, comprised of the committee chairmen and their assistants wishes to express its gratitude to all those who contributed their time and effort to making the 47th Annual Glee a success. And further it wishes to dedicate this souvenir as a remembrance of this original, traditional event of Willamette.

We sincerely hope that this souvenir will recall some of the many happy moments that you spent during Glee. Our special thanks go to Bill McKinney whose valuable advice and photography made the publication of this supplement possible.

The Souvenir Committee
Lewis Bright, Chairman
Jerry Brackins, Asst.
Chairman



Alan MacKillop
Ushers



Elaine Gustafson,
Decorations



Chuck Marsters
Publicity



Lewis Bright
Souvenir



Ralph Sipprell
Tickets



Bob Braddy
Stage



Steve Nason
Chairs & Floor



Jeannine Graber
Entertainment



Ken Smith
Program