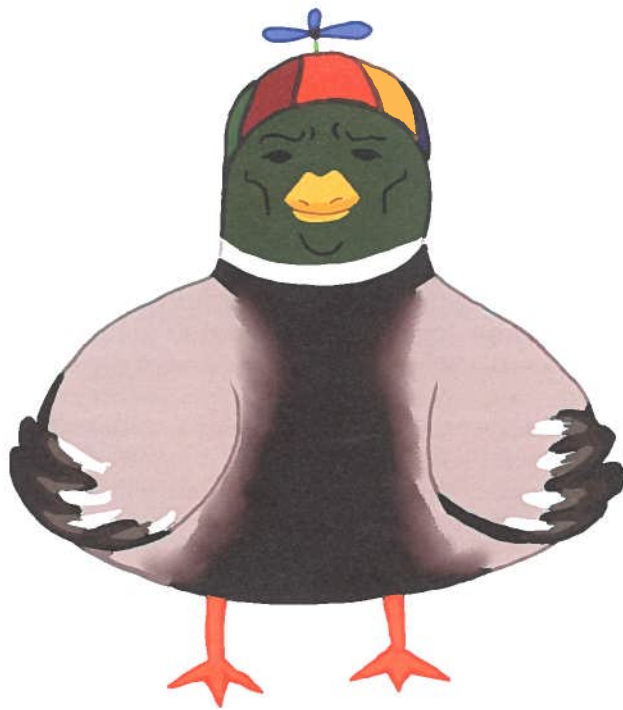


# THE COLLEGIAN

Willamette's Independent Student Newspaper Since 1889

*Your College, Your Paper, Your Stories*



## Staff Roster

Editor in Chief | Emma Innes  
 Managing Editor | Jett Starr  
 Media Content Manager | Josie Elicker  
 Business Manager | Gus Gunter  
 News Editor | Amaya Latuszek  
 Lifestyles Editor | Monte Remer  
 Sports Editor | Skeet Starr  
 Opinions Editor | Bella Montalvo  
 Assistant Media Content Manager | Aissatou Coyle  
 Advisor | Sarah Schneider  
 Mascot | Boots the Duck

## Writers

Gia Patel, Alan Cohen, Bjorn Domst, Sean Olson, Ned Martin, Emily Embleton, Priya Thoren, Jimmy Simpson, Ernie Samora, Jackson Garrett, Mary Vickery

## Photographers and Graphic Designers

Anaka Ramakrishnan, Rori Wenger, Salem Keller, Maille Olgay, Macy Loy, Lucia Alday and Anushka Srivastav

## In this issue:

Layout by Josie Elicker and Aissatou Coyle

News: Pg.1

**Automotive Insight: student-run project teaches marginalized groups about cars**

ASWU Election Results

New Student Collective Posts Demands

Lifestyles: Pg.4

A guide to Spring Weather

Investigating the boundaries of service animals

Featured: Pg.7

**Willamette Students Participate in a Global Day of Service**

Awards in Bearcat Excellence

Sports: Pg.13

The Reel Deal With Millrace

Geer Park to Receive New Skate park

Fast Break Sports 4/17

Opinions : Pg.9

**Willamette Needs to Reevaluate the Current Parking Availability**

**Student's Mental Health Needs are not Being Sufficiently Met**

**The Academic Probation Resources Offered on Campus are sufficient for students**

Backpage

The Collegian Crossword



## Automotive Insight: student-run project teaches marginalized groups about cars and helpful maintenance tips

ALAN COHEN  
STAFF WRITER

The male-dominated car industry prides itself on being highly exclusive and hard to access for many people. Willamette student Kayla Stinson ('25) recently announced the creation of Automotive Insight, a project that seeks to expand access to automotive life skills among women and minorities, in an effort to bridge the gap between marginalized communities and the car industry.

Stinson used to manage a family-owned automotive shop in their hometown of Prescott, Arizona. They explained that they once had to get an oil change at an automotive shop in Salem, which tried to make them agree to unnecessary repairs and extra costs, an unethical tactic known as 'upselling'. "As soon as I said that I man-

aged a shop, they flipped the script," Stinson stated.

"I decided that if I can't change the shops, I will change the customer base," Stinson continued. They explained that Automotive Insight is an in-person two-day course that provides the knowledge to spot unethical business practices like the one Stinson experienced. The course also covered relevant tips on basic car systems, dash lights, car parts, how to jump a car, how to change a car's fluids, and what to expect when taking a vehicle to get a maintenance job done, among other relevant skills. "This event is targeted at women, minorities, and people who typically don't get the knowledge that I will be giving out. I like to think of it as stuff that your dad should

have taught you, but never did," Stinson continued.

On April 7, the first half of the event took place in Ford 102, and Stinson went over the different systems in a car and their respective functions. They also explained how to effectively care for a vehicle to make it last longer, questions to ask at automotive shops, what the different dash lights mean, and how to spot and avoid upselling and other unethical practices.

According to Stinson, Automotive Insight is expected to take place on a semesterly basis, as well as being introduced at the Pacific Northwest College of Arts in the near future. In addition, all of the materials taught will be available on Stinson's shop website, in an effort to increase accessibil-

ity and accommodate those unable to attend the event or people who may need to revisit the material.

The second half of the event will take place on Friday, April 14 in the Kremer Board Room (Ford 102), and Stinson will go over commonly replaced car parts, making educated decisions at maintenance shops, how to jump a car, and other essential skills for drivers. As with the first half of the event, free Bistro catering will be provided, and those unable to attend in person will have the option to do so on Zoom. For accommodations or questions, Kayla Stinson can be reached by email at [klstinson@willamette.edu](mailto:klstinson@willamette.edu).



**"This event is targeted at women, minorities, and people who typically don't get the knowledge that I will be giving out. I like to think of it as stuff that your dad should have taught you, but never did"**

Photo by Alan Cohen



## The 2023-2024 Associated Students of Willamette University Executive has been elected!

The new Executive Board was announced via email by current Vice President Eliza Gonzalez on April 14.

### President:

Mira Karthik ('24)

### Vice President:

Chris Olivia ('24)

### Treasurer:

Milo Greenberg ('24)

## New Student Collective Posts Petition of Demands Around Campus

AMAYA LATUSZEK  
NEWS EDITOR

On April 7, Campus became dotted with copies of a one-page Petitions of Demands signed by the TIRED. Collective. The TIRED. Collective consists of "artists, athletes, organizers, and plenty of student leaders who all want to see change in their specific parts of campus and across the university as a whole." Members of the Collective have felt that they haven't been heard nor have had the power to enact the change they wish to see on campus. In order to protect their identity, The TIRED. Collective declined to interview in person but provided emailed responses.

The Petition of Demands consists of ten demands, the majority of which surround matters of equity, diversity and inclusion. The Collective made demands for hiring more Queer Trans Black Indigenous People of Color (QTBIPOC) and Black Indigenous People of Color (BIPOC) both at the faculty and administrative level. Additionally, The Collective is pushing for students who occupied a presidential, vice presidential, or treasurer position in any QTBIPOC and

BIPOC student organization on campus to receive a \$200 leadership award per semester to account for emotional labor. There was also a call to hire a Director of Equity, Diversity and Inclusion in the athletics department and in the undergraduate Office of Admission. The admission office was also called upon to publish demographics for the classes of 2015 through 2026 and to update it annually. It was also requested that the 2023 HEDS Campus Climate Survey, the 2021 JED Healthy Minds Survey, and the University expenditures were all made public on the University website. The Collective additionally demands that the Associated Students of Willamette University be dissolved and the funding powers be allocated to the Office of Multicultural Affairs, Willamette Events Board and the Community Action Fund for Equity & Sustainability.

The distribution of the petition was explicitly timed for the second Bearcat Day on April 7, an admitted student day that brings many prospective students to campus and is a major event for the Office of Admission.

Similarly, the walk-out is also planned on the final Bearcat Day to "get everybody's attention." The TIRED. Collective stated that they are "doing what we can to provide both current and incoming students with more information about Willamette than they might otherwise be given."

The demands seen on the petition were chosen from a "much longer list" that the collective had created during meetings in which they identified common issues within the university and they wished to provide "reasonable solutions that can be used by administrators to address a whole range of problems." The Collective stated that they have spoken to every administrator listed on the Petition of Demands in regard to these issues but "before now, they've come from the standpoints of our own leadership positions." The Collective felt that now they've come together as an anonymous entity, their needs are harder to be brushed aside.

Students may remember hearing of a similar student organization, Students for Transparency,

Equity, and Accountability through Mobilization, or The STEAM Collective. The previous collective went "relatively underground" after the Spring of 2019 when most STEAM members graduated. The TIRED. Collective wishes to stay afloat after current members have graduated. Currently, the Collective is focused on the walkout and will be paying close attention to how the event unfolds in order to figure out what their next move will be, while also prioritizing the safety of its members.

As of April 10th, Vice President of Student Affairs, Lisa Landreman, has been in contact with the Collective regarding the Petition of Demands. The Collective is "looking forward to addressing the administration and seeing how they want to move forward with a lovely Collective on their hands."

The Collegian has reached out to the other administrators named in the Petition of Demands. This is an ongoing story and the investigation will continue.



## Campus Safety Report March 24th- April 6th

Provided by Campus Safety  
The Campus Safety Report is published as received, without edits by Collegian staff

### Emergency Medical Aid

April 4, 2023, 12:38 p.m. (Pelton Theatre): A Campus Safety officer responded to the Pelton Theatre due to a report that a student was experiencing lightheadedness, migraine pain, and numbness in their left arm. The officer provided a medical escort to the ER at the request of the student.

April 4, 6:11 p.m. (In a Campus Residence): A student called Campus Safety to report that they were experiencing stomach pain and nausea, and requested to be taken to Bishop Wellness Center. The officer advised the student that Bishop was currently closed, so the student requested to be escorted to Urgent Care. Shortly after being dropped off at Urgent Care, a nurse called Campus Safety to report that the student had collapsed and vomited on the floor in the Urgent Care lobby. The officer responded to the scene and provided the student with a medical escort to the ER.

### Suspicious Activity/Persons

March 25, 2023, 4:50 a.m. (University Services Building): An individual approached the main door of the University Services Building and activated the Campus Safety emergency

phone. A Campus Safety officer answered the phone and the individual requested to be let inside the building, stating that it was cold outside. The officer advised the individual that they could not comply with this request. The individual then stated that they needed medical attention and a ride to their apartment. The individual began screaming and banging on the

ambulance.

March 26, 2023, 10:00 a.m. (Sparks Field): A Campus Safety officer observed an individual sleeping under the skybride on the soccer field side of the property. The officer asked the individual to leave the premises, but the individual was unresponsive and uncooperative. Salem PD was then called for assistance.



Graphic by Maizy Goerlitz

door to the building, and the officer advised them that they needed to leave the premises. The individual continued to kick and hit the door with their cane and continued to press the Campus Safety emergency button. The officer called 911 for assistance with the trespassing individual. EMS responded and loaded the individual into the

Salem PD arrived on scene and ran the individual's information. They found that the individual had several warrants, and they were taken into custody and trespassed from Willamette University property.

### Theft

April 2, 2023, 4:52 p.m. (Goudy Commons): An officer observed that

a bike frame locked to a bike rack outside of Goudy Commons had been stripped of its parts. Photos were taken but the owner of the bike has yet to be identified.

April 4, 2023, 6:50 a.m. (University Apartments Parking Lot): An individual called Campus Safety to report that a vehicle had been broken into in the University Apartments parking lot. A Campus Safety officer arrived on scene and took photos of the vehicle. The rear passenger side window had been broken out, and items inside the vehicle appeared to have been rummaged through. The owner of the vehicle was contacted about the break-in, and a report was filed detailing the damage and items that were stolen from the vehicle. storage sometime between Fall of last year and the day it was reported. The cable lock on the front of the bike had been cut, however the bike lock was still attached to the bike rack.

### Safety Violation

April 6, 2023, 1:22 a.m. (Matthews Hall): Campus Safety officers observed that the hatch to the roof of Matthews Hall was open. A master lock was applied to the hatch to prevent student access to the roof.



## An Oregonian's Guide to Spring Weather at Willamette

**BJORN DOMST**  
STAFF WRITER

The sun shines bright on a relatively cloudless day in the middle of April, as a certain unfortunate individual makes the fateful decision to abandon their rain jacket for the day. It shouldn't be needed after all, with only their one morning class and then a trip to Goudy, right? The sun's warmth will feel good after all the gray days of the past few weeks.

However, that's not how weather works here in the Willamette Valley. The sky deceives and the clouds laugh as they roll in at breakneck speeds, bringing a torrential downpour upon unsuspecting innocents.

Stepping outside, the Oregonians laugh back, adeptly slipping on windbreakers and jackets or simply soaking up the falling H<sub>2</sub>O like a cactus in a desert flash flood. They came prepared. The third, fourth and even some second year non Oregonians also foresaw the shift in weather and now cover themselves, pulling out umbrellas and gritting their teeth against the wind.

The first years though—those who haven't experienced such crazily oscillating patterns—never saw it coming. They arrive wide eyed and sputtering at Goudy, fighting off hypothermia as if they'd just been thrown beneath the current of an overflowing Mill Stream in the middle of winter.

This phenomenon is all too common at this time of year. "Spring weather has been very volatile," said Rylan Rodrigues-Zahn ('26), a first year from Orange County, California. "I'll go to class for an hour, and when I come back out, the campus will be a completely different world."

It takes time to learn

that the only consistencies in Oregon spring weather are its inconsistencies. To truly mark its significance, however, it will be necessary to move beyond anecdotal evidence. With data from approximately 1950 through 2011, "The Weather Almanac: A Reference Guide to Weather, Climate, and Related Issues in the United States and Its Key Cities" by Steven L. Horstmeyer can provide some data to work with.

Although this source doesn't account for diel variability in weather, it is noteworthy that it shows spring months averaging 17.3 days (March), 15.5 days (April) and 12.9 days (May) in terms of having some level of rainfall during the day. This means that dry spells upwards of a few days are highly unlikely—especially in the earlier months—so weekly plans should always assume rain will sweep in at some point to spoil the fun. Cloud cover during these same months averages out to a little above 20 days each.

Even by June, an average of 16.1 days will see the same cloudy weather, with 8.9 days of precipitation. As Oregon enters summer, the gauntlet of back and forth weather still isn't over. You have been warned.

There is a distinction to draw between this type of climate and perhaps what many are used to with regard to heavier rainfall. Maybe the local 3.71 inch monthly average of rainfall for March doesn't quite measure up to your home state's totals. Unfortunately, the Willamette Valley is all about the slow and steady erosion—and confusion—of your soul, not the volume it takes to do so.

Even if the daily tem-

perature suddenly starts getting consistently into the 80s and 90s in late April or early May, don't go switching out your entire closet just yet. If you have space in your daily carryon, also remember to pack your poncho.

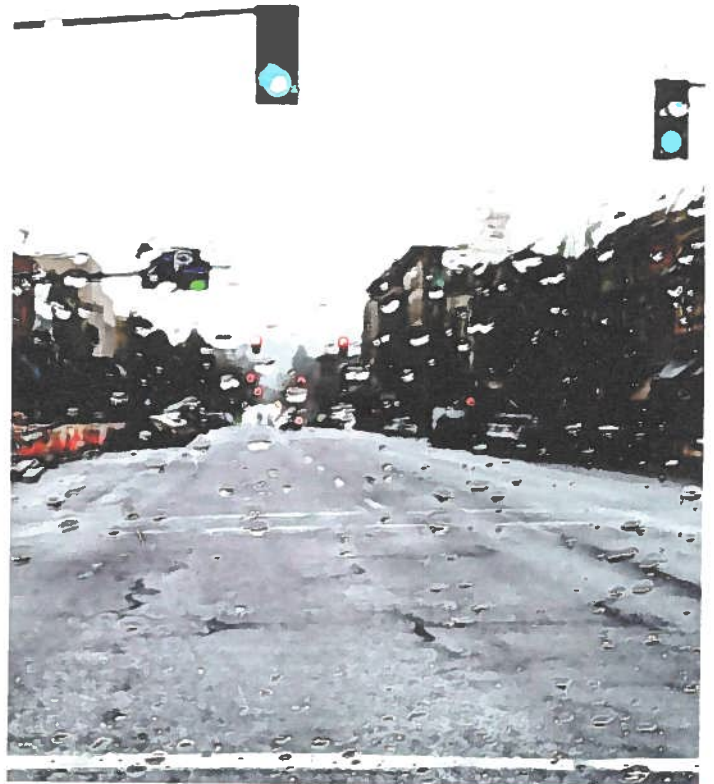
For most, these sudden changes in precipitation and cloud cover are more frustrating than anything else. Not everyone views it the same way. Jay Chew ('26), another first year from California (Elk Grove), said, "It's actually been nice . . . I enjoy the rain. I don't get a lot of that in California." Chew is a distance runner, and also likes running in the rain.

When asked about

Photo by Isis Coyle

how he determines the weather each day, Chew noted, "My window is always open, so I typically just glance outside." Jay added that he doesn't let that determination affect his wardrobe much, though. He dresses far more depending on his mood than perceived outdoor wetness. If the day brings rain over shine, he'll be happy.

On particularly gray days, he gives a warm shout out "to Steve Thorsett and his weather machine," both of which work in perfect tandem to create a wet day out of nothing. Maybe that's how the weather works around here; it's too strange to be explained by almanacs and anecdotes alone.





# LIFESTYLES

## Investigating the Boundaries of Service Animals

SEAN OLSON  
CONTR. WRITER

What draws the line between pets and support animals? We've all seen these adorable creatures on campus. Maybe they were walking around Jackson Plaza or your roommate has one. It's undeniable that service animals are a prevalent part of Willamette's culture.

There are two categories that define support animals: service animals (SA) and emotional support animals (ESA).

"Service animals are not pets" states Jeff Larson, the director of accessible education services. This statement references Title II and III of the Americans with Disabilities Act of 1990, which define service animals as animals that are trained to perform specific tasks for an individual. Surprisingly, Willamette housing guidelines only allow dogs and miniature horses to be service animals. Dogs are the most common type of service animal because they are trainable, intelligent and have a long history of working alongside humans. Additionally, because they are relatively small and portable, they are suited for service work. Miniature horses are an alternative option for anyone who may have religious restriction/allergic reactions to dogs, other dogs related conflicts or simply love horses. Miniature horses can be trained to perform many of the same tasks as dogs including pulling wheelchairs, providing stability for individuals with mobility impairment or guiding individuals who are blind. Although numerous residents and Jeff have not seen a miniature horse their entire career, if you see one on campus, that's probably why.

Emotional support animals on the other hand are animals that provide com-

fort and support to individuals with emotional or mental health conditions. These animals do not require any standardized training and can be other types of animals including cats and rabbits. Emotional support animals are not a one size fits all solution and may not be appropriate for every student with a mental health condition. Students should work closely with mental health professionals and other support resources to determine the best course of action for their specific needs. In order for emotional support animals to qualify, they must receive an approval by the Willamette Office of Accessibility Education Services (AES).

The benefits of emotional support animals and

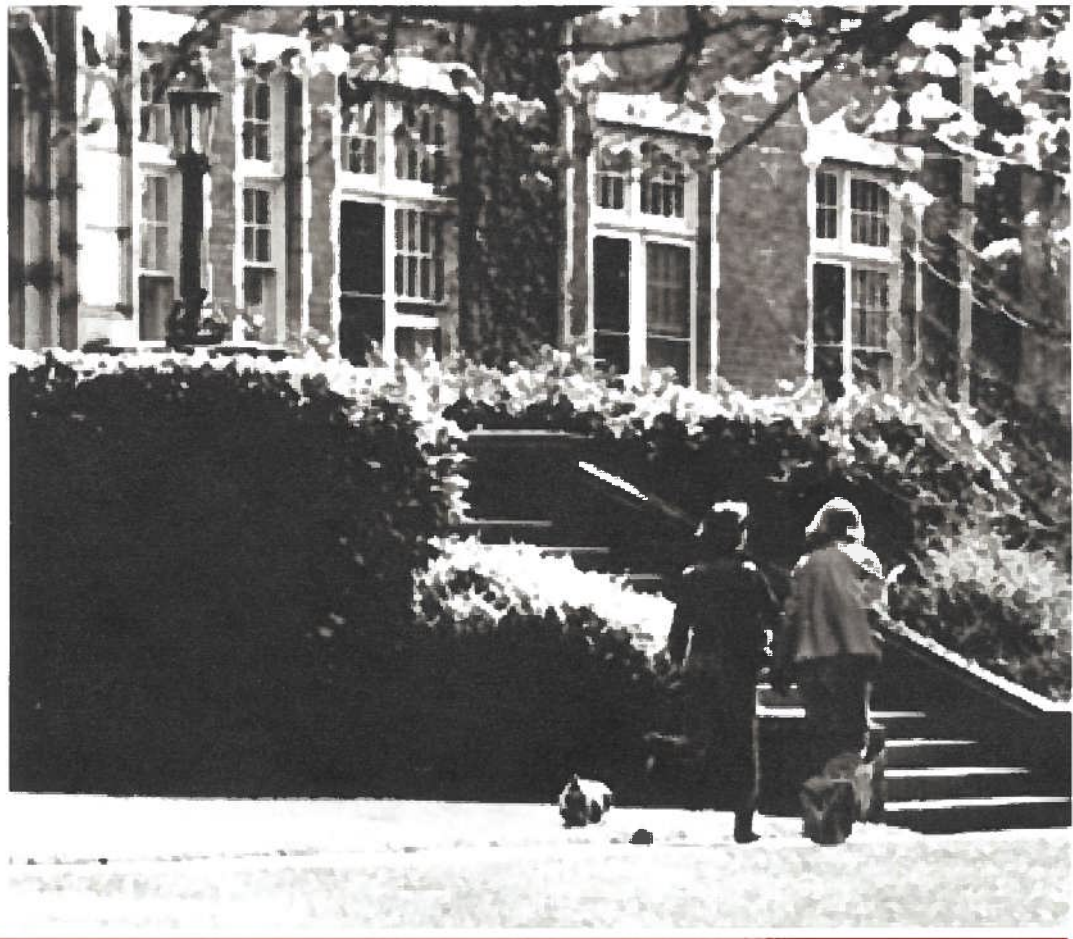
service are great and numerous. Human interactions with animals can reduce stress and anxiety, and improve the mood and overall well-being of a student. For students who may be depressed, having an animal companion can even provide fewer symptoms.

However, there are also challenges associated with having emotional support animals on campus. One of the biggest concerns is allergies. Certain students may have an allergic reaction to service animals. Additionally, some students may feel uncomfortable or afraid around certain types of animals.

Support and service animals also require time, energy and care for already busy Willamette students. Animals require a budgeted

quantity of food and other dietary goods on a daily basis, as well as veterinary care and cleaning. Additionally, the animal must be housebroken (i.e., trained so that, absent illness or accident, the animal controls its waste elimination) and not be disruptive to other students. This can be a significant responsibility, especially for students who are already dealing with academic or personal challenges. However, for many of the students with EMS or service animals, the support of these little partners is worth any cost. For the larger Willamette community, support and service animals are valued as part of our community

Photo from Willamette archives





**BJORN DOMST**  
STAFF WRITER

## Club Profile: Video Game Club Welcomes All

At 6:45 p.m. on a Friday night, the blinds were pulled down in Ford 201, cutting off the view of an early evening sun and leaving the room in darkness aside from a glowing projector screen and a smartboard. Usually, these meetings take place one floor lower in the large open space of Ford 102. For tonight, however, the close knit community of the Video Game Club has adopted this particular corner as its home.

When the club started its weekly two hour meeting at 7 p.m., a few individuals had trickled in. Due to the relaxed nature of the meetings, it would take around ten to fifteen minutes more for the true energy to pick up for the night. The bulk of those who showed up were soon settled, and though a few more would meander their way in as the evening progressed, it was always a quick welcome into the warm atmosphere.

According to Co-President Soren Putney ('23), attendance numbers tend to be pretty mixed throughout the academic year. While slightly better when held in Ford 102, there is a great deal of variability depending on course loads and breaks. Attendance drops as stress levels increase, but rebounds to its typical 10 to 15 attendees on a general Friday or even higher on a tournament night.

Although the size of the gathering may vary, one thing is certain on a weekly basis: it's the atmosphere that counts. The club functions as "more of a social gathering," Putney noted. "People show up for the vibes."

Much of what the Video Game Club does is focused on multi-player fun, but the club's goals extend beyond that to simply

creating a space for others to engage in a shared passion—or explore a new one. Attendees aren't pressured into playing "Super Smash Bros." or even the far more relaxed "Jackbox TV." In fact, several members use the club to play their own games solo while appreciating the social gathering aspect.

The club executives also stressed that there was no threshold for prior experience with video games in order to have a good time. While there are some skill-based games—like the aforementioned "Super Smash Bros." as well as "Mario Kart"—there are equally as many games for those without any necessary knowledge or ability. "It's a space for people who do and don't play video games," said Putney.

Things have also changed from previous years, where one game tended to dominate the scene at a time and numbers dwindled as those who weren't interested became frustrated. Contrary to those repeated weeks of "Among Us" that marked the past, the Video Game Club has been "recreated" as a space for everyone, and now thrives with, as Benjamin Weber ('24) put it, a steady membership of "every week people" and those who show up every now and then.

Weber will be a co-president for the club next year, and it's clear that he has already become very involved with management of the club's affairs. Aside from getting the games and location set up for everyone beforehand, there are additional logistics to consider in the use of club funding. The majority of funds go towards purchasing new games for the group to play, but even that isn't as simple as

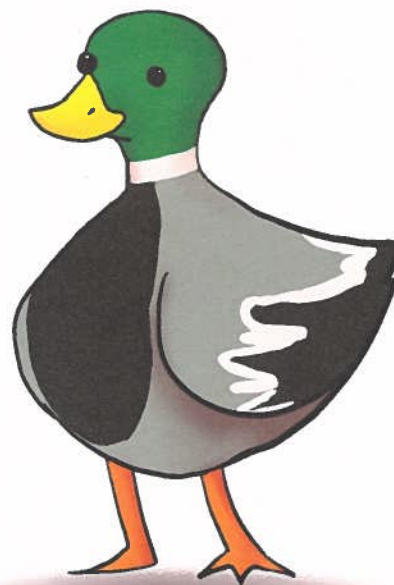
it sounds. Often, to use funds as efficiently as possible, the executive team waits for the games to go on sale. It's a smart business strategy in the long run, and one that allows them to buy more games based on club members' suggestions. "Whatever people want to do, we'll do," said Weber.

The club also hosts larger, more advertised events such as the "Super Smash Bros." tournament on Friday, April 21 of this spring. These tend to bring in people from the general Willamette community and have a more

competitive edge than normal meetings. As Weber emphasized though, the club will always remain "an inclusive place where anyone that has interest regardless of skill level or background can enjoy a media that we all like."

If you're in the market for a chill environment in which to chat away and build community on a Friday evening, it definitely couldn't hurt to try out the Video Game Club! Meetings are 7 to 9 p.m. every Friday in Ford 102.

-----  
**GET QUACKING!**



**YOUR AD HERE!**

Contact us at  
[collegian-editor-in-chief@willamette.edu](mailto:collegian-editor-in-chief@willamette.edu)

-----



## Willamette Students Participate in the Global Day of Service

Designed in order to bring the Willamette community together in pursuit of helping the community and the planet, Global Day of Service was held this year on April 8th. This annual event occurs not only directly on the Willamette campus but also out in the community and even globally for Willamette-affiliated alumni. Activities are to be organized within the Willamette community and this

year the events included, helping with the building of garden beds and weeding, organizing donations at the Mosaic shelter, planting native trees in Salem with the Growing Oaks club, cleaning up at Busch Park, assisting the Gilbert Children's Museum, spreading wood chips at Bush Elementary, working with Habitat for Humanity and much more.



Photos provided by Jaclyn Rojo



## Photojournalism: Bearcat Excellence Awards

ANUSHKA SRIVASTAV  
STAFF PHOTOGRAPHER





# OPINIONS

## Opinion: students' mental health needs are not being sufficiently met on or off campus

ALAN COHEN  
STAFF WRITER

Mental health issues are often difficult to tackle, especially in educational settings, largely due to the rising cost of care in the United States. Students at Willamette and other colleges are provided with several mental health services to try to solve common issues among higher education students, such as burnout, stress, anxiety, depression, and social issues. How do these services work? Is enough being done about this nationwide crisis?

There are students who are generally satisfied with the quality of mental health services at Willamette, but many indicate a lack of access as the main problem. Elliot Earles ('26), for example, stated that he often finds it difficult to book counseling appointments at Bishop Wellness Center because of the high workload counselors already have, despite describing an overall positive experience with the services he used.

Don Thomson is the Associate Dean for Health and Wellbeing, as well as the Director of Bishop Wellness Center. He stated that Willamette implemented Uwill in September of 2022, which is an online counseling service that connects patients and care providers in their state for therapy sessions. According to Thomson, all students are provided with 240 Uwill credits, which can buy up to four hours of video therapy, and students can buy additional credits at their cost. As of March 2023, each credit costs two dollars, and amounts to one minute of audio or video therapy. This means that a half-an-hour-long counseling session would cost the student \$100 after having used their preexisting four hours of free therapy. If a student utilized four month-

ly hours of Uwill, they would have to pay \$800 a month for the service, which amounts to over 60 hours of work for a minimum wage earner in Salem. "For a lot of reasons students will sometimes prefer to get counseling off-campus, and we help students navigate referral processes," Thomson added.

health crises [as well as] alcohol and drug services. The resources are there, but we have not invested in the infrastructure," he added. Thomson also pointed out that the requirements to be licensed as a mental care provider are much stricter in Oregon than in most other states, especially in the minimum number of

**Although minor changes can be made at Willamette and other schools to make mental health services more efficient, this would most likely not outweigh the effects of the national and regional mental health crisis that students are experiencing**

Apart from Uwill, Bishop Wellness Center provides counseling appointments and crisis care free of charge. Depending on the time of the semester and the availability of counselors, Bishop Wellness Center provides schedule-ahead appointments or same-day appointments, but these mental health services are mostly designed for short-term care. In addition, all students can use the Mind Spa free of charge, which includes a multi-setting massage chair and full spectrum light.

Thomson stated that most schools in the country are dealing with mental health crises, but Oregon is one of the states most affected by it. "There aren't enough providers in the community to meet the needs." When asked about the causes of these issues, Thomson stated that this is mostly due to funding. "Oregon has the fewest hospital beds per patient for mental

hours necessary before applying for a license, which incentivizes many professionals to move to states with lower hour requirements. "The bottom line is that there aren't enough providers to meet the need," he concluded. This issue, therefore, is not exclusive to Willamette, as it affects many other institutions.

Venus Edlin is an undergraduate student at Portland's Lewis & Clark College, which is a liberal arts college similarly sized to Willamette. They are the Editor-In-Chief of The Mossy Log, Lewis & Clark's student-run newspaper. "We have limited therapy services [at Lewis & Clark] that I have used before (...) It's six sessions a semester maximum, except in extraneous circumstances. It's meant to be short term (...) We also have some newer resources available including more support group options and a new service that connects athletes to resources on campus, but I

haven't used any of these," Edlin stated. "We are in need of a way to be more proactively checking in on people in our community. There are numerous hoops to jump through in order to access the services that are available, with students often having to wait a long time to access them. I know many people fall through the cracks."

Edlin additionally shared concerns about the lack of providers and the increasing demand for mental health services, which concurs with the mental care crisis and concerns that Thomson explained earlier. "Many individuals within the program are trying their best to accommodate students, but it is falling short of the campus' needs. I have seen more energy devoted to mental health after [the pandemic], and I am hopeful resources will improve," Edlin concluded.

The overall issue is therefore one of an immense disparity between service demand and supply. Although minor changes can be made at Willamette and other schools to make mental health services more efficient, this would most likely not outweigh the effects of the national and regional mental health crisis that students are experiencing. Despite high-quality services such as the ones provided at Lewis and Clark College and Willamette University, there is not enough supply to meet the needs of the students, and the possible solutions to this issue would most likely require long-term in-state policy changes and high investments in overall mental health improvements, both within the higher education system and in our country at large.



**PRIYA THOREN**  
STAFF WRITER

## Opinion: The academic probation resources offered on campus are sufficient for students

Students on academic probation have to live with the fear the status might have on on-campus life. Academic probation is based on various factors, primarily GPA and credits earned, but the limits of Academic Probation can easily cause confusion for students that are unfamiliar with the process.

Student Support Advisor Jessica Cardinal-Lanier said in an interview that there are five different academic statuses at WU: good standing, academic warning, academic probation, academ-

ic suspension and academic dismissal. "Within academic probation, there are three types of probation: straight up academic probation, academic probation pending the resolution of incomplete grades and continued probation. Some students may have incomplete grades from the previous semester that are impacting their GPA, and they'll be on probation until those incompletes are resolved," she explained.

As previously mentioned, academic probation is not determined by a single

element. The Academic Status Committee is presented with compiled student records at the end of every semester. If a student's major GPA, minor GPA, cumulative GPA or semester GPA falls below a 2.0, that is some cause for concern. If a student is behind on credit, that is also looked at as well, according to Cardinal-Lanier.

For those students who do meet the criteria for academic probation, what does this mean for other parts of their experience at WU? Students on academic probation are not prohibited from holding on-campus jobs, unless it is a leadership position, some of which are: Resident Advisors, Colloquium Associates, CAS Admission Ambassadors and PNCA Orientation Ambassadors.

"Basic student worker positions—folks that work here in our office or maybe at the library, or if they are a barista...they can be on probation and have those jobs," Cardinal-Lanier clarified.

Although the university cannot formally have a student rescind their on-campus job positions—aside from leadership positions—they can provide advice based on the situation being faced.

Cardinal-Lanier explained how she would confront an issue of this caliber. She would assess how this job supports the student, and if they really need to work financially. It is important to note that some students simply want a job, while others need the income it provides.

"We just want to make sure that when a student is on probation, that they are prioritizing their academics. So if a job is not something that they have to do, and if those hours are conflicting with ac-

ademics, then then we'll have that discussion...If the student says they're struggling with time management... let's have an honest conversation about what's going on," she said.

Although some policies at the university have shifted over time, in recent years, the academic probation regulations have remained virtually unchanged. The policy that is currently in the catalogue has been in place for the past six or seven years, she said.

Besides the financial support that jobs provide, scholarships are another big source of aid that some students are granted.

"If we're talking your traditional merit-based scholarship, academic probation is separate from financial aid... The Financial Aid Office does use GPA and credits earned to determine a student's financial aid eligibility, but it's slightly different thresholds... they're not looking at semester GPA. So while credits and GPA are looked at for both processes and how they determine the status for those, they are determined separately. The students who retain their merit-based scholarship would need to make sure that they are falling within the Financial Aid Satisfactory Academic Progress Policy. Students who fall into financial aid suspension, can petition to reinstate their financial aid," Cardinal-Lanier described.

Although academic probation is not meant to be a punitive measure, Cardinal-Lanier does understand why students feel that it can be sometimes. She, along with the university, likes to approach probation from a very supportive standpoint. This is done by making

Continued on pg. 12





# OPINIONS

## Opinion: Willamette Needs to Re-evaluate the Current Parking Availability

PRIYA THOREN  
STAFF WRITER

Willamette students have enough to deal with during the school year, let alone trying to find a place to park in the morning. Unfortunately, issues with campus parking are not ensuring a peaceful environment for some individuals. Willamette appears to offer various parking options, presenting students with choices to fit their best needs. However, it seems that these assurances of adequate parking spaces are illusory.

An influx of freshmen entered the university's community Fall of 2022, and if this trend continues, the already meagre parking selections are only going to get more cramped as the school continues to admit larger freshmen classes.

Lali Trejo ('26) currently has a car on campus. She lives in the dorms and must find a way for her car to reside in one of the parking lots. "I [have had issues with finding parking] like a thousand times. I park in the Matthews parking lot and usually all the seniors take [the spots] because of their classes," she said.

One sentiment that was shared between multiple interviewees was the unsafe conditions brought upon them by the lack of proper parking space. This brings up a whole other issue; not only are students suffering from inconveniences, they are also not feeling safe and comfortable walking to their cars parked on campus.

"I park at Sparks, meaning I have to walk in the dark at night back there, which is super spooky because the lights suck around there," Trejo elaborated. Her avoidance of the Sparks park-

ing lot has even landed her with a ticket. With no open spots, Trejo parked in a Matthews reserved spot with only a standard parking pass and was later fined.

Gavin Klipfel ('26) echoed Trejo's concerns: "When I haven't found spots in Matthews, I usually go to the larger Spark's parking lot. In general, I know that I am pretty privileged to have a car on campus... However, I think of people who aren't big or tall and don't seem physically strong walking alone at night. It can be really harmful in the long term for them because it exposes them to, I hate to say it, but being assaulted. It can lengthen the opportunity," he said.

Reserved parking spots on campus do not seem to be working in the way that the university intended for them to be. There are never cars in the reserved spots, ac-

cording to Klipfel. "I'll leave my car there overnight, at like 10 pm... I'll go to sleep and come back out at 8 am to get it and there's already a ticket. And they're 25 bucks each. This is not fun—to have to pay," he said. Klipfel has also had to pay for parking along Winter Street when there was no parking to be found on campus.

The university could solve this problem by putting up more parking spots or, suggested by Klipfel, reevaluate the parking permit situation altogether. "Maybe people who have those spots reserved aren't using them, and so that would at least free up some of the spaces that are already existing," he explained.

Certain times of day provide students with more luck with finding parking on campus. "I would say after 7, if you're not parked in Mat-

thews, game over," Trejo said. Klipfel added that this pattern is particularly strong on weekdays, due to so much stress already being in the air. They also agreed that afternoons keep the lots pretty packed. Edie Mueller ('23) has a forty-five minute commute to campus. She offered her input regarding timing and parking availability as well: "I've had pretty early classes [this semester and last semester], and what I've noticed is that if I get here before 11, which I am because I have classes early, there's always parking for me. But when I get here later in the day, like if I had classes that were cancelled or something, then I might have a harder time," she said.

Parking locations have unanswered confusion surrounding them as well.

Continued on pg. 12

Photo by Anushka Srivastav



# OPINIONS



Continued from pg. 10  
sure that the student feels supported during the semester, that they are aware of the resources that are available on campus, she said. "It's always my goal when I work with students on probation to support them to the best of my ability, so that they move off probation back into good standing," she concluded.

Gabby Keeve ('25) offered a student perspective on the topic of academic probation. Keeve did not know that academic probation affects the ability that students have to hold jobs on campus, she said.

Although Keeve had

no previous knowledge on the subject, she does believe that the policies in place are logical. "...It makes sense that [students on academic probation] can't hold positions of leadership while on academic probation, but they should definitely be able to keep their job," she explained.

Unfortunately, academic probation does appear to be a stress-inducing policy for Willamette students.

"If you have a helpful advisor, maybe they can be a resource. But... I know you can't do sports and probably theater while on probation, but there's not much information about [probation] that I've seen," Keeve said.

Isaiah Yanez ('26) also had minimal prior knowledge regarding academic probation on campus. "I'm not sure how I feel about whether or not [students on academic probation] can hold jobs... but it does somewhat make sense that they can still hold on-campus jobs," he offered.

In regards to the overall policies, Yanez had a fluctuation of opinion. "It seems to be more like a case-by-case kind of thing," he explained.

Academic probation at Willamette serves as a nudge to students to better their grade management. There is constant support for said students which can help to alleviate any panic that

they may feel over being put on probation. Despite this, many students on campus still fear probation and associate it with stress and isolation. "From what I've heard, academic probation doesn't really do anything super helpful for students, just stress them out," said Keeve. This is why it is important that students know that there are resources available to them, added worries will only serve to decrease the quality of their academic performance. The support system that is currently available appears to be an adequate piecing together of helpful resources for struggling students.

Continued from pg. 11  
Mueller noted that when she lived in Kaneko, the parking system was confusing. "People were super unclear if you had to purchase a Kaneko pass or if a standard one would allow you to park in Kaneko as well as Sparks," she explained. An email sent by housing on Thursday, Feb 9 alerted Kaneko residents that a switch back to pre-COVID policies of having Kaneko be a reserved parking space will be happening shortly. The email wrote: "[n]otice of the change back to 'Reserved' was posted on the entry gate starting in November. Permanent signage was posted in January and warning citations were then issued intermittently in an effort to increase student awareness. Starting on February 1st, official citations began being issued. Please contact the Service Center to inquire about a Reserved Kaneko permit. Standard Parking permits are no longer valid in the Kaneko lot."

Like Klipfel, Mueller has also fallen victim to having to pay for parking due to minimal space in the campus lots. "I did park on the street a couple semesters ago. Am I going to circle around for a

spot in Sparks one more time, or am I going to park on the street and not pay? It's also because I had classes in the art building, and there's not really parking that's close over there...so I would pull up on the street," she said.

None of the interviewees have yet been active with their concerns about student parking on Willamette's campus.

Klipfel expressed his doubt of being taken seriously by campus safety. "I think they recognize that it's kind of, at least in my case, it's kind of a privileged thing. You know, I don't really suffer from feeling unsafe...so I've never thought of voicing it, just because it's something that doesn't really affect me too much. However, after thinking about it and recognizing that people literally can have increased chances of being assaulted, I definitely think I am more willing to voice my concerns to the school," he said.

Mueller did attempt to get her questions about Kaneko cleared up. She never got a straight answer, however, and felt that nobody was on the same page about what students need to do in regards to parking, she said.

Unfortunately, solutions to these issues do not seem to be right around the corner. Ideas such as adopting a nearby parking lot or finding another space to add spots have been brought up, and there are hopes that campus safety will take into consider-

ation the effect the abysmal parking situation is having on the safety of students.

Note that when asked for an interview, Campus Safety Student Parking Enforcement responded with an error message and no response.

## Firewood for Sale

Cured hard and softwood mix

\$370 per cord, \$130 per 1/3 cord



Free delivery to Salem, stacking service available

Buy from Willamette students!

Contact: [lafayettefirewood@gmail.com](mailto:lafayettefirewood@gmail.com)

## Fast Break Sports 4/17

**SKEET STARR**  
SPORTS EDITOR

Hello Bearcat fan! Sound the alarm because the spring-season conference championships are upon us. I would joke, but there's nothing more serious than potential NWC glory. Let's go to the news!

Lacrosse went 3-0 against Linfield and the Whits, including a 13-12 shootout at home against Whitman, and secured #2 a spot in the conference semifinals this Saturday. Details about playoffs TBA.

Golfers are also gearing up for conference championships. The men look to enter the tournament as contenders, lurking just two points behind #1 Whitworth.

Three wins over Lewis & Clark ended Softball's

drought. The squad will pack up their season on that high note.

Both Tennis teams failed to find a win against Pacific, Whitworth or George Fox.

Baseball's grudge match against Linfield resulted in a disappointing 1-2 series loss, thus proving jinxes are 100% real. Don't count them out just yet though, they too will head to the conference tournament this weekend at the #3 spot.

Track & Field will of course also head to the conference championship. It won't be much of a trip however as this year's event will take place on Willamette's own Charles Bowles track (on the 21st and 22nd).



Art by Minna Zhou

Consider in the coming week: Will the Basecats turn themselves around in time to clinch the title? Can Lacrosse slingshot Newberg's Goliath? Which of your favorite golfers, throwers and

runners will crack under the weight of conference history, and which will stand tall? The Collegian will be there through it all, more or less on time, guaranteed.

## Geer Park to Receive New Skatepark

**ERNIE SAMORA**  
CONTR. WRITER

Salem Parks and Recreation Department is preparing for construction of a brand new 19,500 square foot state-of-the-art skate park to be added to Geer Park. Located just two miles from campus, Geer Park's new facelift presents an exciting future for the Salem skate scene.

A recent update to the Comprehensive Park System Master Plan has identified a need for two new skateparks in the city. The update made the new skatepark possible, alongside a host of new amenities in Geer including a plaza, picnic areas and a new playground. The skatepark would be placed in the northern area of the park, next to the already existing bike park. Evergreen Skatepark is in charge of design and construction, with two options being considered for the design.

Option A is a stretched out design with a green space in the middle, which helps to make the park feel larger than it actually is. The goal of

this design is to "make it feel like you're riding down the street," said Richie Conklin, a designer and project manager for Evergreen, during a public online meeting. Option A includes obstacles such as a clover bowl, pyramid hip, cantilevered edge and an A-Frame along with various other rails and edges. The second option, in contrast, aims for a more balanced approach, with a more squished, round design with no green space. This design would feature an area for free, open-flowing transitions along with a clover bowl, spines, a flat edge and various sized ledges, rails and pads.

Lighting and covering will not be present at the park's debut but are being considered to be added in the future. The design is currently under public review, which will take place until May 2023. Construction for the park is planned for Spring/Summer 2024. "Staff is confident that

Continued on pg.11

**Option B**

1. Clover Bowl
2. Down Rail
3. Bank to Ledge
4. Hip
5. Cantilevered Edge
6. Flat Ledge
7. Multi-Ledges
8. Flow Joint
9. Pyramid Hip
10. Rails and Manual Pads
11. A-Frame w/ Rail Edge
12. Jumps and Transfers
13. Mooncape with Small Transitions
14. Spine

**Option A**

1. Bank to Ledge
2. Clover Bowl
3. Down Rail
4. Gaps
5. Transition Hip
6. Cantilevered Edge
7. Pier-Ledge
8. Multi-Ledges
9. Organic Flow
10. Pyramid Hip
11. Rails and Manual Pads
12. Skate Path
13. A-Frame with Rail Edge

Continued from pg. 10  
the project can be constructed by September 2025” wrote Brian D. Martin, Acting Public Works Director on the grant application. The design will be chosen based on the results of the public review. Either option could change in obstacles or appearance based on these results. “Effortless fun, fast flow,” is the goal Conklin

described in a public online meeting.

The Park System Development Charges (SDCs), a set of fees collected by developers specifically for the development of new park services, will fund the Geer Park project. SDCs have provided the park \$1.9 million so far. However, the project is facing a projected funding shortfall

due to inflation and rising construction costs. Salem city council recently submitted an application for a grant from the Oregon Parks and Recreation Department’s Local Government Grant program, which could provide up to \$500,000. The grant program is funded by Salem Lottery. “Further SDC funding may be added in the following

year’s City budget,” said Rob Romanek, Parks and Natural Resources Planning Manager for the city of Salem, via email.

If the project receives the funding necessary, the park would certainly have a positive impact. A new skatepark was identified as a critical need by the Parks Master Plan and by local scene members.

## The Reel Deal with the Millrace

MARY VICKERY  
CONTR. WRITER

Salem Oregon’s fishing scene has more to it than one may think. While a plethora of aquatic life resides in the nearby Detroit Lake as well as the Willamette River, one doesn’t have to travel so far to cast their line. Closer to home (WU), the millrace runs full of fish waiting with baited breath.

The millrace is a man-made industrial waterway diverted in 1861 from Mill Creek, a 22-mile-long tributary of the Willamette River. Salem’s millrace leads back and forth from Salem’s mill, which can be seen at Mill Race Park. The closest millrace to the University runs into campus and becomes the beloved Mill Stream. East of Willamette University, lies the corner of 15th and Ferry Street. On this corner begins a stretching, rusted, chain link fence which looks to have been warped by years of leaning fisherfolk. Beyond this fence sits a placid canal. The light brown water holds a stillness that falsely suggests a lack of life below.

Many different life forms dwell in the millrace, one being fish. According to Salem’s Natural Resources Outreach Specialist, Deborah Topp, the only fish that reside in the millrace are sculpin. Sculpin are Oregon native fish that are found in both salt and freshwater. Kiana Gottschalk (’23), a Willamette student,

is leading a BIOL 453W Behavioral Ecology project on the species in the millrace. Gottschalk performed a sampling of Mill Creek in collaboration with Oregon Fish and Wildlife and confirmed via email that there are prickly sculpin (*cottus asper*) in the millrace. Gottschalk also revealed the presence of another type of fish friend, called the red shiner (*richardsonius balteatus*). She went on to say “Historically, there were winter steelhead and spring chinook that would spawn in the Mill Race, however due to recent stream warming from climate change, those salmon populations have drastically decreased.” Furthermore, “Catfish, certain types of minnows, perches and bass are some of the common introduced species in this area.”

Fish aren’t the only creatures hiding in the canals. Deborah Topp assures that crawdads also dwell in the murky water. Crawdads are freshwater crustaceans that look like small lobsters. Hold the Old Bay though, there are a few restrictions to keep in mind before catching or eating any of these critters. To (legally) fish in Salem’s canals, one must acquire a fishing license. Fishing licenses are enforced to protect local fish populations and can be checked by a game warden or a cop, both of whom are unlikely to let one off the hook.

They can be obtained through the Oregon Department of Fish and Wildlife (ODFW), or (in true American fashion) Walmart.

Edibility of these aquatic creatures is a whole other can of worms. While eating a catch is not wholly out of the question, there are a few guidelines to keep in mind before breaking out the filet knife. It is vital to note Salem’s current Total Maximum Daily Load (TMDL) levels. TMDL is a calculation that represents the highest amount of pollutant a water body can take on and still meet water quality standards set by the state. Ac-

ording to Deborah Topp, the Willamette River’s TMDL advisory was recently lifted. This however doesn’t necessarily mean that its tributaries, Mill Creek included, are within healthy levels. Fish are also well known for bioaccumulating chemicals via the food chain. Although TMDL levels may be safe now, aquatic life holds chemicals, including mercury, in their bodies from many years ago. So while technically edible, details get a bit slimy, and consumption is not encouraged.

Fin.

Photos by Salem Keller



# BOOTS AND GIGGLES

## The Collegian Crossword: April Edition

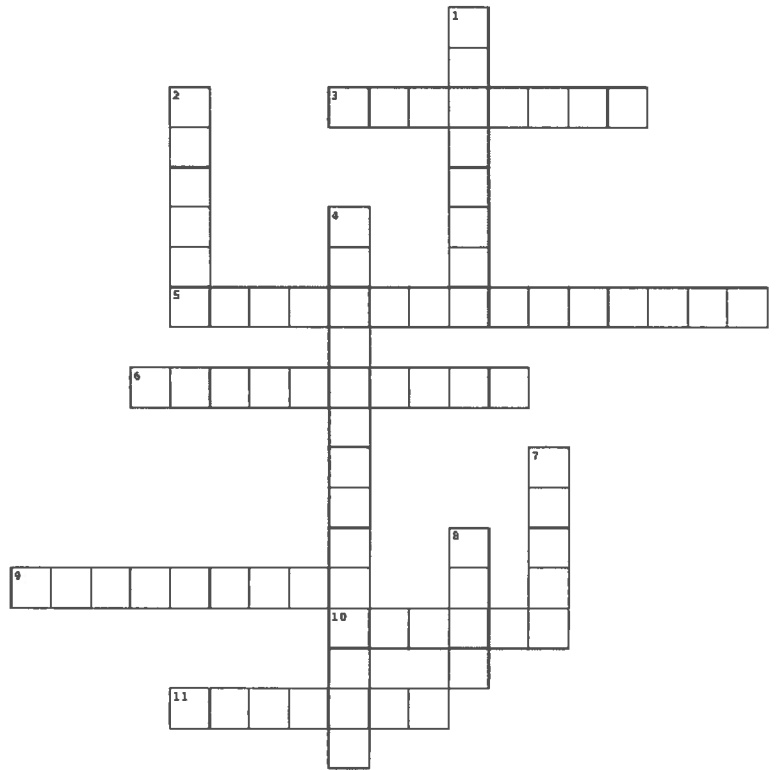
Crossword by Bella Montalvo

### Across

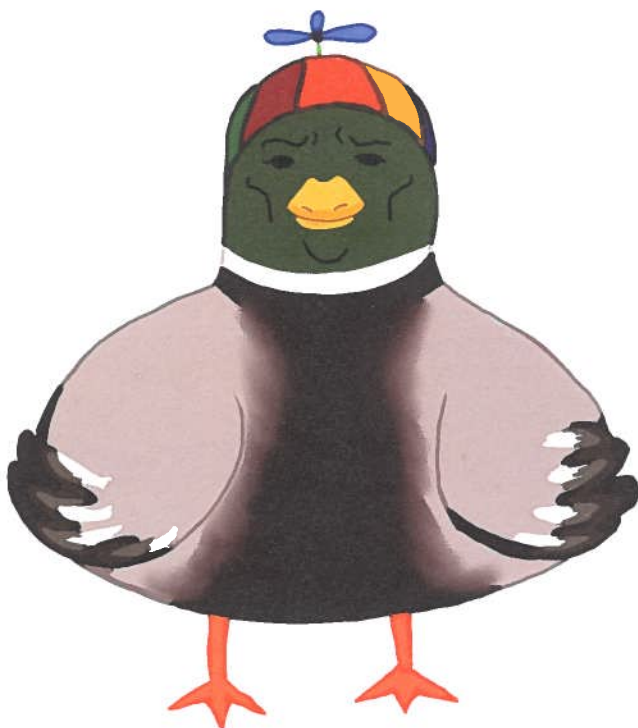
- [3] Sport that starts in April
- [5] Most stressful day of every semester
- [6] What do April showers bring?
- [9] Vanessa Hudgens is the Queen of
- [10] Considered the most stubborn zodiac sign
- [11] April birthstone

### Down

- [1] April flower
- [2] Grey's Anatomy Dr. April \_\_\_\_
- [4] Marathon held every April
- [7] April \_\_\_\_ Day
- [8] Student scholarship event that happens every Spring semester at WU



Chad Boots, Art by Aissatou Coyle



## The Collegian is Online!

Twitter:  
@WU\_Collegian

Instagram:  
@willamette\_collegian



1. Sweet Pea 2. Kepner 3. Baseball 4. Boston Marathon 5. Registration Day 6. Mayflowers 7. Fools 8. SSRD 9. Coachella 10. Taurus 11. Diamond