

'Hordes' flock into econ classes

By JULIA HUNGERFORD
Collegian Reporter

Students attend Willamette largely because it is a small school, in which classes can be conducted on a human scale, and oriented toward discussion and class involvement, right? Well, we don't always get what we want.

With the current economic slump, concerned students are flocking to business schools, and to our own economics department, in hordes. There are 110 people in the introductory course alone, listening to "Guru" Hanson reveal the dark mysteries of eternal material wealth, or so they hope.

In 1979-80, the Economics Department ran first in the number of credits granted. It had 1,016 students in its classes that year; impressive compared to the second-placed English Dept. with 921, Political Science at 755, and the rest averaging out around the 300 range. The Economics department vies with the Political Science Dept. for the greatest number last year by about 50 to 43. The department handles these numbers with five full-time and one part-time professor. The English Dept. has eight, and Political Science four.

There are many problems, obviously, involved in larger classes. Discussion is much harder to handle. A professor may hesitate to assign papers or projects because of the time involved in reading, grading, and giving sufficient comment on the work of all his students. Students may feel that the professor doesn't have time to talk to them individually, outside of class.

Crowded classes are not what a student expects from 'this school.'

Even upper division classes, which usually have ten to fifteen students in other departments often enroll around thirty to forty students in economics courses. Thus, an economics major could go through all four years and perhaps never get the small classes that students in other disciplines expect.

Economics, however, is an area in which these problems are not as large as they could be if in another department. Economics is relatively well suited for a straight lecture format. Discussion does not seem to have been too limited by the large numbers. Some students have even said that it is easier to speak out in the larger, less personal classes. Professors are still available for individual attention. Economics is a fairly unified field, according to Dean Berberet, not needing a large number or wide variety of courses.

Nevertheless, everyone seems to admit that a problem exists. The crowded classes are not what an incoming student expects from a school which in its catalog claims a student-faculty ratio of 13:1. According to



"Guru" Hanson speaks to overcrowded class; nearly 90 students fill this room in Waller Hall.

Nachtrieb photo

Dean Berberet, we can have a larger faculty if we are willing to pay a higher tuition, or are able to get a higher enrollment in order to make more funds available. Unfortunately a nationwide decline in college enrollment is expected, starting in 1982.

Advising gets attention

By JEFFREY LOGAN
Collegian News Editor

As we step into the '80's, the field of higher education is being faced with unprecedented demands. Not only is it more of a challenge to attract students, but it is equally difficult to retain them. In order to make schools more attractive, planners have typically focussed on, and made adjustments to, more ostensible elements of the institution: classes, their size and focus; professors, what and when they teach; in addition to certain physical elements of the school. Recently, however, attention has been focussed on an area that has not traditionally been viewed as critical — that of academic advising. According to the American College Testing program and the National Center for Higher Educational Management systems, improvement of existing academic advising systems is on the agenda of 55 % of private, four-year schools surveyed.

So how does Willamette fit into the picture? Is it following this national trend? Last spring the Academic Council authorized Virginia Bothun, Associate Dean of Academic Affairs, to form a committee to study academic advising at the University.

The group, consisting of Bothun and professors Jim Bjorkquist, Wayne Muller, William Devery, and Richard Stewart, met over the

summer for two weeks to gather information and "to develop plans for discussing and, perhaps, making changes in the advising system." According to Bothun, these efforts were "purely informational."

The results of these informational gathering efforts are generally positive, though they do address some specific areas of concern. Two questionnaires, one completed by faculty and the other by students, have been weighted heavily. The message that the faculty relayed via the questionnaire is that "a mechanism for evaluating the effectiveness of the academic advisers should be developed." This idea is consistent with the national trend, as a study conducted by the Indiana University School of Education last summer concluded that one of the problems with academic advising systems is "the lack of adequate evaluation of them." Ostensibly, this subject of evaluation is the major concern of the faculty.

Results of the student questionnaire, which was taken last June, reveal that nearly 50 % of the students surveyed felt that the advising system is "adequate." Concern was expressed most frequently about freshmen advising. Respondents indicated that there is a need for advisers to be more familiar with elements of the institution outside of their own academic area, i.e.

(continued on page 12)

(continued on page 12)

Cherriots found viable alternative

By JANNA WILSON
Collegian Reporter

Taking "Cherriot" rides provided by the Salem Transit System may not be as stirring as the ancient races, but they transport people to almost anywhere in town. The city's buses, or Cherriots, operate along fourteen routes Monday through Saturday. Adult fare is thirty cents, except on Saturday when all bus service is free. The Cherriots are used widely by commuters and are also a means of student transportation.

The central depot, located at the corner of Court and High Streets, is the origin of all runs. Weekday service begins at 6:15 a.m., and the last bus departs at 6:15 p.m. Generally, buses leave at fifteen minutes before and fifteen minutes after each hour. However, certain lines switch to hourly service between peak time periods. These variations are noted in the schedules, which are available at the depot.

In addition to free Saturday bus service, a free zone exists in the downtown area. Rides within the boundaries of Commercial, Twelfth, Marion, and Mission Streets are free. Leaving this area, adults, age eighteen and up, pay thirty cents, and the youth fare is twenty cents. Children under five accompanied by an adult ride for free, and those over 65 or handicapped pay half of the regular fare. If needed, a transfer slip is included with the fare.

Payment is made upon leaving the bus if the rider boards in the downtown area. If the bus is entering downtown, the fare is paid when boarding.

University students with limited transportation may find the Cherriot's fourteen lines a means to travel throughout the city. The State and Fairview line is the nearest to the campus. It can be taken to Court and High, where any bus can be caught. buses run to areas such as Commercial Boulevard, Market Street, Lancaster Drive, Boone Road, Highland Avenue, and West Salem.

Many commuters in the Salem area utilize the system, and ridership is high. By joining the Cherriot Commuter Club, employees in downtown Salem can ride to and from work free. The Park and Ride program enables commuters to take an express bus to work from one of five parking locations in the outskirts of town.

More information can be obtained through the City Transit office, located in Room 305 at the Franklin Building, 495 State Street. They can also be reached by telephone at 588-6005.



More satisfied customers (and one employee) of the Cherriot system.

Nachtrieb photo

Goals for W.U. discussed

The University Planning Committee had their first meeting of the year on Friday, to discuss the draft planning statement they have been working on since last January. The draft planning statement suggests many long and short range goals which will affect the academic atmosphere at Willamette.

The Planning Committee was somewhat confused as to how the draft planning statement would actually be used and what the committee's purpose was. This confusion resulted from the uncertainty of how the new president wanted to use the committee. Student representative, Roger Garvin, said that, "In this committee that (the purpose) never gets answered...the purpose is never defined...we're just an advisory committee."

Professor Bob Lucas, who is serving his second year on the committee said that the committee's function is, "advisory and informational, we who sit on it represent various areas and speak for them. My experience is that

those who firm up the University's policies listen to the planning committee."

In a memo to committee chairman Sam Hall, Professor Sue Leeson stated her assumption that the purpose of the planning document was to, "help us identify what needs to be done and make some progress in the matter." Professor Leeson also noted that some of the goals listed in the planning draft have no plans for implementation.

Some key items of the 1980-81 draft of the planning statement directly affect the College of Liberal Arts. One goal involves improvements of Willamette's facilities. It calls for the renovation of Collins Hall (which is already underway), a new library, the complete renovation of Eaton and Waller Halls by 1985 and discontinued use of Gatke by 1987.

This section of the plan also suggests improved heating systems in all facilities to save energy and bring campus buildings up to applicable codes. Improvement of the food ser-

vice facilities was also stated as a goal. At present time, the food service facilities are 'inefficient' and 'extraordinarily expensive,' the input said.

The academic support area of the draft involves improving media services, and faculty and student development services. One portion of the University relations section of the draft involves changing the schedules so that classes would be offered from 8 am - 5 pm Monday through Friday. This would eliminate the "second weekend" on Tuesday night, and improve the "academic atmosphere."

The planning committee will be working through the intricacies of the draft and hope to have the plan completed by October 10. The annual planning progress report will be issued to the campus on October 20.

A complete copy of planning draft is on file in the Collegian office.

[The committee will meet in the U.C. on Fridays, at 2:30 pm]

magoo's
275 Commercial SE
Salem, Oregon 97301

OPEN 7 A.M.
MONDAY-SATURDAY

TUESDAY NIGHTS FROM 5 P.M. TO CLOSING
IMPORTED BEER 60¢ A GLASS
This Tuesday's import is HEINEKEN

Magoo's



Large
Miller
Pitcher

(regular \$2.95)

\$1.95

WITH THIS COUPON
expires Oct. 15, 1980



An imposing view of the 'campus living room.' The building is available for: book browsing, ping pong, eating, dancing, Senate meetings, and publishing the *Collegian*.
Nachtrieb photo

Law Hopefuls Meet

By TAMI MILLER
Collegian Reporter

Lee Tornquist, Dean of the College of Law, drew nearly fifty of Willamette's law school hopefuls to the year's first Pre-Law Society meeting last Monday night. Dean Tornquist talked to the students about a six-week seminar he attended at Yale University this summer, and answered students' questions about law school.

In response to an enthusiastic round of questions, the dean advised the group of the most beneficial preparatory courses offered the pre-law student, the importance of high LSAT scores, the strengths of the Willamette College of Law, and the difficulty of the Oregon State Bar examination.

particular interest in exploring the relationship between the law and the humanities.

"Dr. Sue Leeson [Willamette political science professor] and I have been working for three years to organize the Pre-Law Society," he said. "We've been collecting films and tapes and will be working with the Society's officers to develop and sustain the interest of those students interested in law."

One goal Dr. Smith has for the Pre-Law Society is to "provide a mechanism to help students prepare for law school." He plans to provide information about the courses students will need to take and to make the group a place to "share common experiences." He also encourages more freshmen and faculty members to attend the meetings.

One goal Dr. Smith has for the pre-law society is to 'provide a mechanism to help students prepare for law school.'

Willamette's pre-law adviser Dr. Ken Smith said, in review of the evening's events, that the meeting was of the "nuts and bolts" type, and he would "like the [future] meetings to take a broader interest in the law rather than just how to get into law school." He expressed

Acting program director Nancy Prosser suggested that the Society vote for a program chairperson, publicity manager, and treasurer at the next meeting. The time and date of the next meeting will be published in the *MemoRandom* and posted on bulletin boards on campus.

Campus Briefs

Convo: OPTIMUM HEALTH DAY

Wednesday, Oct. 1 is "Optimum Health Day" at W.U. featuring keynote Convocation at 11 am and follow-up address at 1 pm by an internationally recognized researcher and author.

A wide variety of workshops and activities will be held which include a campus "Fun Run", and a "Self-Care" Open House from 8-6:30 pm in the Health Center, offering much information and complimentary nutritional snacks for visitors. All activities are free to Willamette students, faculty and staff.

Play games

The University Center Games Tournament will begin in October and continue through November. Any student, faculty, or staff member may enter an event; however, only students will be eligible to compete in the ACU-I Regional Games Tournament, which will be held at Pacific Lutheran University in February.

The deadline for signing up is Sept. 30. Sign-up sheets are located at the UC Recreation Room, Eaton Hall, Law School Student Lounge, GSA Student Lounge, Doney Dining Room, and Baxter Dining Room.

Events include table tennis, table soccer (teams only), backgammon, chess, billiards, and frisbee. If you're interested, but need more information before signing up, contact Doug Schultz (371-8843).

Have a Heart

Lee house is sponsoring cardio pulmonary resuscitation classes this fall.

The entire campus is welcome for the first session, Tuesday Sept. 30th. However the second session, Wednesday Oct. 1st, will be limited. If you wish to participate in both sessions call Judy Chipman at Lee House 370-6326.

Acts needed

Do you have a special talent you would like to share with the campus? Acts are needed for a coffee house on October 3, to be held in conjunction with Parents' Weekend.

A wide variety of entertainment is sought. For more information, call Sarah Behrens (6355) or Sarah Hannan (6306).

Jazz it up

The club plans to bring the best in jazz to the campus and will be discussing the jazz greats' lives, music and influence on the music scene today. The club meets tonight September 25, at 7 p.m. in the Autzen Senate Chamber.

The band of Count Basie, the trumpet of Miles Davis, and the voice of Sarah Vaughan are alive and swinging at Willamette. *Want to check out the hip side of Willamette University?* Then come to the campus Jazz Club.

College Bowl Coming

Registration packets for Willamette College Bowl will be available at the UC desk beginning Monday, September 29. The deadline for registration is October 4.

Each living organization will be allowed as many teams as it has ASWU senators. Other organizations which are currently funded by the ASWU may sponsor a team or, if the group has more than 90 members, two teams.

College Bowl is a fast-paced quiz game with questions on a multitude of subjects, many of which are covered in a liberal arts curriculum. Teams are made of four currently enrolled Willamette students. One member may be a graduate student.

The competition will take place on October 12 and 14. Semi-final rounds will be October 21 and the finals will be held October 23.

At weekly

UNIVERSITY WORSHIP

SUNDAY, SEPT. 28, 7 PM, ALUMNI LOUNGE, U.C.

Preaching: Prof. James Hand on
 "The Doctrine of Creation"

collegian interview

Religion on campus

By JOHN PARTIGAN
Collegian Editor

Willamette was once a "very protestant school," according to Phil Hanni, United Methodist minister and University Chaplain. Two visits to chapel were required each week until well after World War II. A religion course was required until 1971. Presently (beginning in the '60's actually), the University has adopted a more "pluralistic" view of campus religious life.

Although school founder Jason Lee was a Methodist missionary, Willamette has never been legally affiliated with the church. A Methodist bishop remains on the executive board of the Board of Trustees, however; and Willamette maintains a "historic and moral relationship" with the church, providing a constituency of students, some financial support, and "fringe benefits" (i.e., President Hudson's trip to China).

An objective of the College of Liberal Arts is the promotion of "spiritual values, especially those found through Christian commitment." The accreditation team found a "general disinterest in religion on campus." In response to this "discrepancy," Chaplain Hanni points out that the accreditors never consulted with him about the issue. He feels

that Christian values (i.e., "a sense of justice, mercy, comradery, pastoral care, and a spirit and reverence towards all of life") are being encouraged, and that "this is a better reading of the spiritual health than

University of Oregon."

The Christian Fellowship (formally the "Christian Body") was "the biggest activity on campus," averaging about ninety participants each week, in 1971. The current group

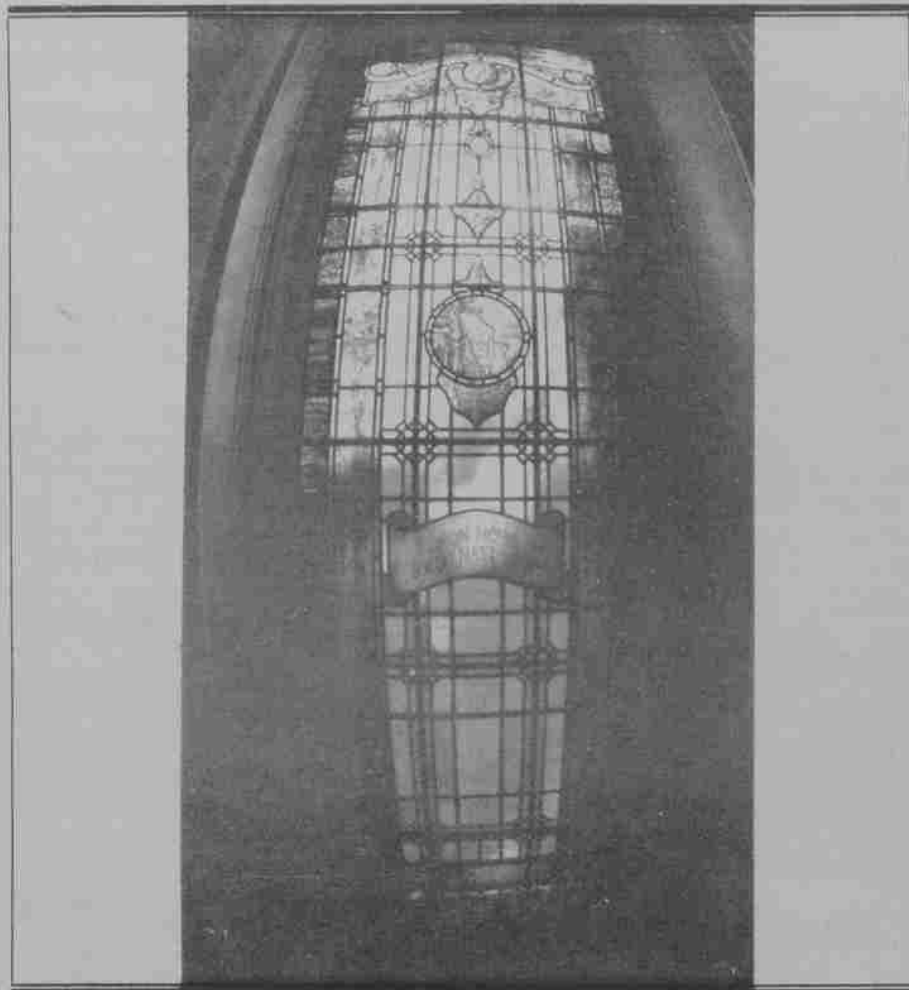
another. "They purposely meet head-on on the same night," and because of a similar outlook and "evangelical outreach," as Chaplain Hanni puts it, "they are carving up the same turf."

What has "continued to surprise and discourage" Phil Hanni, is that "so many of the self-proclaimed religious groups on this campus spend so much of their time fighting with other ... and also just being such damn poor students themselves, from what I can tell in the classroom."

Other student religious groups include the Newman Club (Catholic), Fellowship of Christian Athletes, and a Mormon group, composed primarily of law students.

When asked *Ideally, what would the religious climate be like at Willamette?* Chaplain Hanni said that we need a "better respect for the diversity and worthwhileness of religious opinions ... The self-proclaimed religious people ... don't respect that, and they lampoon people of different conviction or degrade them." The Chaplain feels that "minimally, ideally, we have to get beyond that ... or say to those persons 'That's a mindful view, but why go here?' ... The acceptance of diversity does not undercut your view ... it just means that you are less cantankerous about it."

University Worship, an ecumenical service led by Chaplain Hanni, is being held in the Alumni Lounge (UC) on Sunday evenings. The service was instituted "in response to the insistence of others, requesting an alternative to downtown, or the more 'sectarian thing' on our own campus, and due to the needs and strengths of this time in my life." The Chaplain wants to more actively engage in preaching and worship, which is "what I do best."



The diffused light of Waller's stained glass.

Nachtrieb photo

to see if the University has sponsored formal 'Christian' activities ... that fits if you're the George Fox or Seattle Pacific ... or some place where you have not formally declared that you're as pluralistic as the

averages around 20-30 participants, comparable in size to the Campus Ambassadors (conservative Baptist), who meet off-campus and have a full-time minister.

These groups compete with one

The Willamette Fish Feast at the TERRARIUM

A Tuesday Night EVENT!!

for WU folks only

featuring

*ABSOLUTELY FRESH FILET (Perch, Ling Cod, Red Snapper, True Cod, etc. ... depending upon availability).

served with

*SOUP OF THE DAY or 3-GREEN SALAD.

*BROWN RICE PILAF or FRENCH FRIES

*HOT FRENCH BREAD with WHIPPED BUTTER.

all for

\$5.75

Draft beer 50¢
House wine 85¢
with purchase of fish feast.

Ask for the WU fish feast
served every Tuesday from 5-10 p.m.
at the

Terrarium

156 Church

Salem

363-1611

There's no place like it!!



Wheeler's Wine World

DOMESTIC / IMPORT WINE & BEER

83 Imported Beers from 27 Countries

Large Selection of Ports and Sherries
Crystal and Glassware
Bookstore for the Wine Buff
Openers of All Kinds
Gifts

Case Sales Our Specialty

4132 Liberty Road South
Salem, Oregon 97302
503-370-WINE

Izquierda: 'the woman who lives down the road'

By FELICIA UHLEN
Collegian Reporter

They are women who love women. They are gay. They are the Izquierda Ensemble, a musical group from Portland.

They performed at the Kresge Theatre on Friday, September 19.

When the group took the stage after being introduced by Bill Duvall, some of the members looked "different"; some did not. Naomi Littlebear wrote most of the music, sang lead vocals, and played guitar very well. Izetta Smith primarily sang vocals, though she also played some rhythm instruments. Kristan Aspen sang and played the piano and flute. June Adams sang and played the piano. They opened with a song called "Gracias a la Vida."

Kresge Theatre was about half-filled. Not all of the audience was from Willamette. The concert was sponsored by the Associated Students, the University Speakers Committee and the Minority Affairs Committee and was free.

It quickly became evident that the group was not a typical rock band with typical lyrics ("baby, baby, baby, let's oooo, etc."), nor a classical cello ensemble. The group had a message. Littlebear introduced a song she wrote herself when her two



The Izquierda ensemble (l. to r.):
Kristan Aspen, June Adams, Naomi Littlebear, and Izetta Smith.

...her hobbies were 'being manic-depressive and being in the closet.'

She believes the two are related.

hobbies were "being manic-depressive and being in the closet." She believes the two are related. The song was about pretending, though, "the woman who lives down the road, she knows."

The rest of the concert was built around two themes: violence against the earth and violence against women. The segment on violence against the earth dealt with the Creation, volcanoes (used as a metaphor to the women's movement), and acid rain. After intermission, the segment on violence against women began with two old pop songs done very well in camp style (complete with WASPish costumes). The songs, "Johnny Get Angry" and "Maybe," were two old hits, but the way the group did them the message of the songs was clear. To men the songs say: dominate; to women: submit.

That wasn't the only insight that night. The women each told a story of mental, physical or sexual abuse during the segment on violence against women. It was affecting. The

group received quite an ovation and returned for an encore before ending.

It was an interesting experience for a straight feminist. A lot of the songs and comments dealt with being gay and being proud of it. I do not think they should be ashamed. But I have to wonder, sometimes what the close ties between the women's movement and the gay rights movement do for grass-roots support for the women's movement. True, the women's movement should mean freedom from role stereotypes for men and women, and presumably, for all people regardless of sex or sexual preference. However, as a political question, perhaps more women like the WASPish caricatures in one of Izquierda's numbers would support the movement if it were more separate from the gay rights movement.

I also have to wonder sometimes, when every member of Izquierda walks onstage without makeup or bras, if they haven't swapped one

oppressive concept of beauty for another.

It was interesting, because I did not always understand or agree with what they were trying to say as I listened to the concert seated between two male friends. It was interesting, because sometimes I understood very well. I understood about some of the things your mother tells you about men, about playing the guitar in the key of A minor sometimes, and about some of the things society believes about men and women. I understood about pain. I understood about anger. They told about horrible per-

sonal experiences (how can they tell those things to a crowd of strangers?) and I was angry for them, and I was angry for me. I understand about anger because I saw a friend once throw a pen in a guy's face during an argument--and hit him. I understand about anger because I've heard some jokes that aren't funny. I understand about anger but I have always believed that it isn't right to turn it toward all men, or men in general. (It's tempting, but it isn't right.) However, when Izquierda can take that anger and turn it into music, I have to admire that.

The Art Company

•ART SUPPLIES •GALLERY

•GRAPHICS •MATTING

THIS AD GOOD FOR 10% OFF ANY
PURCHASE OR SERVICE THRU 31 OCT. '80.

PRINGLE PARK PLAZA
445 HIGH STREET, SALEM, OREGON
364-7384



LITTLE KING®
349 State Street - 362-0481

"Where a sandwich is a complete meal"

CALL FOR TAKE-OUT ORDERS

Lunch served all day
every day

Sandwiches
Soups, Salads
Beer and Wine





**Reed
Wine
&
Cheese
Co.**

Reed Opera House
189 Liberty St., N.E.
ph. 585 WINE

Stereotyping of Campus Living Organizations

By SHAN GORDON
Diversions Editor

It could be called "Everything housing should have told you — but it's too late to move now," since it provides all the "real" information on living organizations. It could be called "Look what they've done to my dorm, Ma," since it compares the old stereotype of the residence to the new, improved version. But such titles would obscure the many applications of "The Guide to Stereotyped WU Residences." Authored by the dorm members themselves, this guide provides accurate insight into the psyche of the members of the various living organizations, enabling you to handle hundreds of difficult social situations.

Suppose, for an example, that you are eating breakfast and someone — egads! — from another residence sits down beside you. Coyly look the intruder in the eye and whisper, "Tell me where you live or I'll gouge your belly button out with this spoon." Upon hearing the reply skim rapidly through the guide to decide whether you should apologize and try to charm him, leave quickly, or go ahead and gouge him. Friends, team mates, and dope connections can all be found through the use of this handy guide.

However, the most important feature of the guide is the amount of time that it can save. By eliminating the need to meet and learn about other students, this list can save the average student up to 1,868 hours each year. Hours that could otherwise have been spent establishing meaningful relationships can now be spent in superficial interactions with people you really couldn't care less about.

However, to make these listings as accurate as possible, and thus save the maximum amount of time, your cooperation is needed. All members of the listed organizations are urged to read and comply with the respective stereotypes in the strictest sense. Further, all individual differences between members and the stereotype of a living organization are to be ignored. Failure to follow these rules will ruin the whole system.

BAXTER

- 1) General stereotype:
(old) raunchy, loud, hotbed of student apathy, tacky.
(new) same fun place that people bitch about but really want to live there (esp. 3rd floor).
- 2) Major activities:
(old) drinking, drugs, sex.
(new) college bowl, I.M.'s, sex.
- 3) Topics of conversation:
(old) drinking, drugs, sex.
(new) College Bowl, I.M.'s, sex.
- 4) Typical majors:
(old) Econ, Music, English.
(new) P.E., Public Policy, Pre-Law.
- 5) Popular sports:
(old) sex, gambling, sleeping in.
(new) sex, powderpuff football, golf, volleyball, tennis.
- 6) Favorite movies:
(old) *Saturday Night Fever*, *Cheech and Chong's First Movie*, *Star Wars*, *The Cheerleaders*.
(new) *Airplane*, *Casablanca*, *Blazing Saddles*.
- 7) Favorite music:
(old) rock and roll, disco, funk, raunch.
(new) rock and roll, jazz, new wave.
- 8) Titles of books read:
(old) *Bambi*, *Making it With Single Women*, *The Other Side of Midnight*.
(new) *Dress for Success*, *How to Deal With Stress*, *Business Law*.
- 9) Mode of transportation:
(old) drug-induced trips, beat-up cars, sometimes being carried home by friends.
(new) mopeds, imported economy cars, bikes.
- 10) Typical dress:
(old) jeans, T-shirts, tennis shoes, whatever's on sale, old sweats.
(new) preppy, Gloria and Calvin jeans, sportswear for active people.
- 11) Lbs. make-up per student per day:
(old) 3.0.
(new) 0.1.

- 12) Contents of pockets:
(old) drugs, matches, roach clips, coke spoons, loose change.
(new) pocket calculators, wallets (w/o money), credit cards, drugs.
- 13) Favorite foods:
(old) Saga Steak, seconds, munchies, popcorn.
(new) Mexican, Chinese, Pizza to go.
- 14) Type and amount of drug usage
(old) everything and anything all the time.
(new) plenty of booze on weekends, coffee during finals.
- 15) Amount and type of sexual contact:
(old) always on the sly with someone you hardly know or with the person you've been dating since you got to WU, often drug-induced interrupted only by fire drills.
(new) freshmen sowing wild oats, upperclassmen getting serious.



BELKNAP

- 1) General stereotype:
(old) a safe place for a monk to live.
(new) not quite as safe a place for a monk to live.
- 2) Major activities:
(old) NONE.
(new) speaking Hawaiian (talk like brah, y'no?)
- 3) Topics of conversation:
(old) the women's wing.
(new) the women's wing.
- 4) Typical majors:
(old) Biblical study.
(new) P.E., Poli Sci, Econ, Academic Stuff.
- 5) Popular sports:
(old) losing I.M.'s.
(new) waterfights.
- 6) Favorite movies:
(old) *The Bible*, *The Ten Commandments*, *Jesus Christ Superstar*.
(new) *Empire Strikes Back*, *Xanadu*, *Rock-n-Roll High*.
- 7) Favorite music:
(old) Mormon Tabernacle Choir, Lawrence Welk.
(new) Donna, Doobies, Devo.
- 8) Titles of books read:
(old) Bible, both Testaments, *The Scarsdale Diet*.
(new) *Joy of Sex, Illustrated Guide to Disco*.
- 9) Mode of transportation:
(old) W.C.T.U. Bandwagon.
(new) surfboards, skateboards, skates.
- 10) Typical dress:
(old) high-button blouses, pants, coats, tents.
(new) shorts, Jap-flaps, football jerseys.
- 11) Lbs. make-up per students per day:

More Entertaining Than Humanly Possible!



SIR LEW GRADE and MARTIN STARGER present A JIM HENSON PRODUCTION
"THE MUPPET MOVIE"
Executive Producer MARTIN STARGER • Produced by JIM HENSON
Written by JERRY JUHL & JACK BURNS • Directed by JAMES FRAWLEY
Music & Lyrics by PAUL WILLIAMS and KENNY ASCHER
Co-produced by DAVID LAZER
Starring The Muppet Performers JIM HENSON • FRANK OZ • JERRY NELSON
RICHARD HUNT • DAVE GOELZ
Co-starring CHARLES DURNING and AUSTIN PENDLETON
Special Guest Stars EDGAR BERGEN • MILTON BERLE • MEL BROOKS
JAMES COBURN • DOM DeLUISE • ELLIOTT GOULD • BOB HOPE
MADELINE KAHN • CAROL KANE • CLORIS LEACHMAN • STEVE MARTIN
RICHARD PRYOR • TELLY SAVALAS • ORSON WELLES • PAUL WILLIAMS
Soundtrack available on Atlantic Records and Tapes • Read The Bantam Muppet Movie Book



G GENERAL AUDIENCES
All Ages Admitted



Shows at 7:00 & 9:30 FRIDAY
SMITH AUDITORIUM

back to
the old grind!?



WAKE UP
WITH FRESH
ROASTED COFFEE!!

- *one cup drip cones*
- *a new special cup*
- *complete coffee & tea accessories*

\$1.00 OFF

\$5 purchase with this ad

Monday-Friday 9-6
Saturday 10-5:30

545 COURT N.E.

- (old) NONE.
(new) DITTO.
- 12) Contents of pockets:
(old) pocket scriptures, Mace.
(new) bludgeons, grams, and ounces.
- 13) Favorite foods:
(old) popcorn, lotsa butter.
(new) *boit, lau-lau, simin.*
- 14) Type and amount of drug usage:
(old) coffee, tea, nothing else.
(new) mass quantities of mari-jana and Bull.
- 15) Amount and type of sexual contact:
(old) atmosphere in women's wing was too cold for such things.
(new) wishful thinking.

DELTA

- 1) General stereotype:
(old) dormant domestic drug addicts.
(new) globe-trotting intellectuals, assertive aspiring career women.
- 2) Major Activities:
(old) ministering to the needs of any motherless fraternity man.
(new) any and all athletics, door-to-door political crusades, perfecting the games Pass Out.
- 3) Topics of conversation:
(old) engagements, happy hour at the Ram.
(new) the new Space Invaders game at Magoo's.
- 4) Typical majors:
(old) Education, English, P.E.
(new) Poli Sci, International Studies, Chemistry.
- 5) Popular sports:
(old) football.
(new) football.
- 6) Favorite movies:
(old) *The Sound of Music.*
(new) *Rocky Horror.*
- 7) Favorite music:
(old) Rock & Roll.
(new) new wave, jazz.
- 8) Titles of books read:
(old) *Thornbirds.*
(new) *Shogun.*

KAPPA SIGMA by Matthews Hall

- 1) General stereotype:
(old) Frat Rat, self-centered, fashion paranoid, gay.
(new) unconsciously conservative, active in campus affairs, easy-going.
- 2) Major activities:
(old) keggers.
(new) keg rolls.
- 3) Topics of conversation:
(old) girls.
(new) money.
- 4) Typical majors:
(old) Econ, Poli Sci, Art.
(new) same.
- 5) Popular sports:
(old) I.M.'s — everything.
(new) only rigorous — raquetball, football.
- 6) Favorite movies:
(old) *Journey Through the Past.*
(new) *Rust Never Sleeps.*
- 7) Favorite music:
(old) Stones and more Stones.
(new) Neil Young.
- 8) Titles of books read:
(old) anything but assigned texts.
(new) all assigned texts.
- 9) Mode of transportation:
(old) BMW.
(new) bicycles, mopeds.
- 10) Typical dress:
(old) slacks, penny loafers, green fatigues.
(new) preppy, conservative business.
- 11) Lbs. make-up per students per day:
(old) 1.5.
(new) 0.55.

- 12) Contents of pockets:
(old) money (small unmarked bills).
(new) travelers' checks.
- 13) Favorite foods:
(old) Greek (what else?).
(new) Italian, Chinese.
- 14) Type and amount of drug usage:
(old) screwdriver.
(new) free base.
- 15) Amount and type of sexual contact:
(old) weekly.
(new) every chapter meeting.

LAUSANNE

- 1) General stereotype:
(old) earthy, intellectual, non-social, spacy.
(new) dashing, sophisticated, fashion-conscious, spiffy and keen.
- 2) Major activities:
(old) meditating, cultivating earth.
(new) studying, partying, broad I.M. participation.



Miller

- 3) Topics of conversation:
(old) anti-apartheid, anti-Nestle's, anti-everything
(new) politics, campus activities, gossip.
- 4) Typical majors:
(old) philosophy, history, religion.
(new) psych, econ, music.
- 5) Popular sports:
(old) women's body hair growing.
(new) volleyball, basketball, golf.
- 6) Favorite movies:
(old) *King of Hearts, Freaks.*
(new) *Fame, Breaking Away, Rocky Horror.*
- 7) Favorite music:
(old) recorder, folk.
(new) new wave, basic rock.
- 8) Titles of books read:
(old) *Zen and the Art of Motorcycle Maintenance.*
(new) Tolkien, Janson's *Art History, History of Western Civilization.*
- 9) Mode of transportation:
(old) Birkenstocks, bike.
(new) bike, rollerskates, skateboard.
- 10) Typical dress:
(old) Birkenstocks, Mexican wedding shirts, anything wool, mountain parkas, head bandannas, army surplus, Jerry Canning wear.
(new) designer, hi-fashion wear, preppy, jeans and T-shirt, Chinos and Izod.
- 11) Lbs. make-up per students per day:
(old) 0.
(new) 1/16.
- 12) Contents of pockets:
(old) moss, mold, organic matter, Swiss army knife.
(new) ballet, Broadway, and opera tickets; krugerrands, silver spoons.
- 13) Favorite foods:
(old) granola, seeds and legumes, sprouts, yogurt.

- (new) Perrier, cheese, bread and wine, fruits (edible), spaghetti.
- 14) Type and amount of drug usage:
(old) homegrown organic, ginseng.
(new) Vivarin, strong coffee.
- 15) Amount and type of sexual contact:
(old) group raptures, organically induced.
(new) drunken individual gropes.

MATTHEWS

- 1) General Stereotype:
(old) adamantly GDI, argumentative and hostile to Greeks, independent from the word go.
(new) open-minded, tolerant, mellow.
- 2) Major activities:
(old) viewing French films, weekend bar-hopping.
(new) attending sports events, viewing Swedish films.



(old) often.
(new) constantly.

SHEPARD

- 1) General stereotype:
(old) loud, night owls, active, outspoken.
(new) fun-loving, young, inexperienced, homesick.
- 2) Major activities:
(old) MEN!, pulling all-nighters, volleyball, basketball.
(new) lots of I.M. participation, parties, studying, sewing.
- 3) Topics of conversation:
(old) booze, boys, books, Bill.
(new) home, schoolwork.
- 4) Typical majors:
(old) Chem, Bio, Music.
(new) Poli Sci.
- 5) Popular sports:
(old) hall tag, popping popcorn, "Pebble Beach."
(new) hockey, volleyball.
- 6) Favorite movies:
(old) *Rocky Horror Picture Show.*
(new) *Mary Poppins.*
- 7) Favorite music:
(old) classical.
(new) bubble gum rock.
- 8) Titles of books read:
(old) Bible, James Joyce.
(new) Webster's Dictionary, Bible.
- 9) Mode of transportation:
(old) teet, Sarah's Honda, Jana Lu's Z-car.
(new) bicycles, feet.
- 10) Typical dress:
(old) sweats.
(new) baggy jeans and Cherokee shoes.
- 11) Lbs. make-up per students per day:
(old) 0.
(new) 1/2.
- 12) Contents of pockets:
(old) slide rules and X-Acto knives.
(new) keys and meal cards.
- 13) Favorite foods:
(old) pizza, coffee cake, popcorn, herb tea, sausage and apples.
(new) BREAKFAST.
- 14) Type and amount of drug usage:
(old) kahtua, vodka.
(new) orange juice, milk.
- 15) Amount and type of sexual contact:
(old) backrubs, beau parlor.
(new) give us time — we're nearly all freshmen!

The Towing Man Cometh

Strolled out to the parking lot lately? Have you glanced in the area where you last parked your car? Well, if it's been a couple of days since you have lovingly cushioned yourself behind the wheel, you might just want to take a peek. Especially if you have forgotten to obtain your parking permit.

Towing. Ah, yes, the infamous culprit of missing vehicles. If you have happened to completely ignore all of the parking tickets you have received in the past three weeks, *beware*, for your pride and joy just might mysteriously disappear without any clue to its whereabouts.

One might think that towing in itself would be punishment enough for the consistently remiss person, but no, they have to kidnap it without leaving anything that even *resembles* a ransom note.

The owner should be notified, out of sheer courtesy. An end must be put to these vengeful robberies on the campus of Willamette University, and the "meter maid" need not fear for the safety of her cart. *mng*

Ron breaks a leg

If you missed the Presidential debate Sunday night, you missed one of the great entertainment values of our decade. Never before has such vicious verbosity been available to so many at just the push of the button or twist of a knob.

Independent John Anderson had the best arguments, and attacked Republican Ronald Reagan with enthusiastic vigor. Anderson left the debate unscathed, however. Reagan seemed incapable of using anything approximating a good dig at his opponent. The best Reagan could manage was "What do you know? You've never been governor of the great state of California!"

Anderson came across as an angry man out to change the face of American civilization. In his idealistic fervor, he used splendid emotional, yet rational, oratory to counter Reagan's limp and drooping attacks. Reagan, on the other hand, seemed mild, jovial, friendly (he called Anderson "John" throughout the debate), and just a tad senile.

In all, Reagan made a fool of himself, and probably lost quite a few independent votes. He seemed to be picking figures out of the air, and he often rambled patriotically. His closing address cinched it. With its sixth-grade essay, "Why I'm Proud to Be an American" quality, it had not place on national television, and brought roars of laughter from the other watching with me. *mea*



Please submit:
Fusser's guide

The University is in the process of publishing the campus directory, or *Fusser's Guide*, as it is commonly known at Willamette. If you did not fill out a blue card with your name, address, etc., please contact the Registrar and fill one out today. It is important if you want to be listed!

THE COLLEGIAN

JOHN PARTIGAN
Editor

SHAN GORDON
Diversions

JEAN BRAZIE
Production

JEFF LOGAN
News

ANNE DENECKE
Sports

KAREN COATES
Composition

STEVE PRINCE
Advertising

PETE HINCK
Business

ED NACTRIEB
Darkroom

MARTINE GREBER
Calendar

The contents of this publication are the opinions and responsibility of the staff of the *Collegian* and do not necessarily reflect the opinions of the publisher, the Associated Students of Willamette University.

Subscription rate \$5 in the USA. Ad rate is \$2.75 per column inch. Office address and phone are 900 State Street, Salem, Oregon, 97301, 570-6224. Second class postage paid at Salem, Oregon, 97301. Published Thursdays during the school year, except during exam weeks and vacations.

LETTERS POLICY

The *Collegian* welcomes and encourages letters to the editor. They should be typed and double spaced, and all letters must be signed; names will be withheld upon request, but will remain on file in the Publications Office.

Feedback

To The Editor:

Well, it has finally happened. . . I'm a senior. These past four years at Willamette have served me well, and I now feel that I am prepared to face the nation with knowledge energy and a smile! Yet, before I graduate . . . I have one request. I would like to see more lighting on campus.

The Willamette University campus is poorly lit, this is a known fact among both the administration and the student body, yet nothing has been done about it. Who is to tell me that Willamette University does not have the appropriate funds to cover such an expenditure? With all the money that it collects from students, one would think that student protection would be taken into consideration. Yet in the four years that I have been a student at Willamette the same lights have been burnt out, there has been an increase in attempted rapes, and vandalism has taken its toll among the student body.

There are four lights in the quad. The pathways between Gatke and the library, Waller and Eaton, Lausanne and Collins and the corner of the Playhouse next to the Health Center are a loonies' paradise. Willamette, surrounded by half-way houses, conveniently within walking distance of the state hospital and centrally located in the downtown area, is a haven for passersby, derelicts and transients.

This year, Willamette is blessed with a new president who promises a change in pace. Hopefully he will

realize that in order to see the light, one must have it there in the first place.

Brian Wilson

To the Editor:

As the newest member of the Willamette admissions staff, I presume that Shan Gordon was referring to me when he wrote in the last issue of the *Collegian* that "Admissions has added another staff member." For the record, mine is not a new position; there are still only four members of the professional admissions staff. What has changed, however, is the nature of the Admissions Counselor position. It is now covered by a permanent, twelve-month contract, rather than a two-year, nine-month, non-renewable contract.

Mr. Gordon also mentions that we have focussed our recruitment efforts on the Northwest, where enrollment and retention rates are higher. In the context of his article it would appear that there has been a shift in our emphasis, which is simply not true. We continue to visit more high schools in Oregon and Washington than we do in other states, *just as we have always done*. However, we have not decreased our travel in the rest of the western United States, and, in fact, we have added to the number of follow-up activities in many of these states. We have also managed to provide representation in a number of areas which we were unable to visit in the past by effectively utilizing alumni-admissions representatives and, occasionally, currently enrolled

students. The fact that we do continue our efforts in the states that have historically provided us with reasonably stable and diversified enrollments, despite the increasing costs of airfare, motels and meals, car rentals, etc., helps explain, in part, our increased budget allocation.

The bulk of the admissions budget increase is actually related to three other major expenditures not directly linked to the travel portion of our budget. As Jim Sumner, the Associate Director of Admissions, explained to Shan Gordon in a lengthy conversation, both admissions publications and work-study salaries were assigned to our budget this year. This change is actually only a shift in accounting procedures, not a new item in the overall university budget, and it is misleading to present it as such. The third area of increase in our allocation is a result of the change in the Admissions Counselor position. Obviously, when adding three months in the length of a contract, you also add three months' worth of salary. Aside from these additions to our budget (only one of which can accurately be described as an increase), we received a fourteen percent greater allocation to cover our usual recruitment activities.

Frankly, I disagree with a great deal of Mr. Gordon's assessment of priorities at Willamette. However, my first concern is to correct the inaccurate and misleading information about the Admissions Office. If the other figures quoted are of the same reliability, the "analysis" is not worth serious attention.

Sue Rauch
Admissions Counselor

TACKINESS CRAZES SALEM Hendrix photo

By JOHN PARTIGAN
Collegian Editor

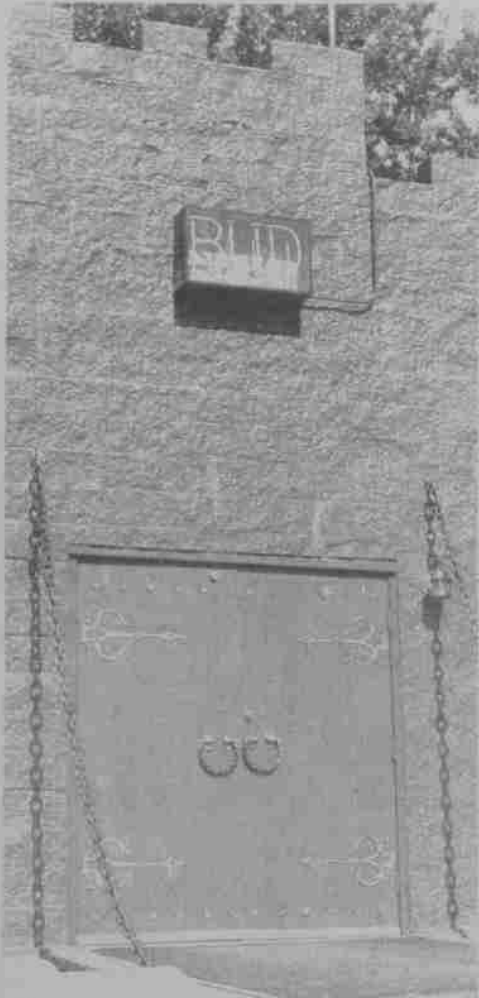
"tacky: characterized by lack of good breeding ... marked by lack of style or good taste ... cheap showiness, gaudy."

—Webster's New Collegiate Dictionary

Every municipality has its share of whitewashed rocks, radial tires and wagon wheels; milk can mail boxes, and architectural features which speak (hol-ler) of false eloquence, haste, and garish ornamentation. Salem is no exception.

Be it the neo-neoclassic health spa on Court Street, plastic appaloosa hitched over downtown Commercial Street, the spinning, exuberant yuck of Chemeketa Parkade noon, the "pizza castle," or the numerous attempts at modern sculpture erected on the grounds of state and local government (Wrigley's foil wrappers spit through a fan, frozen, and surrounded by water, crushed pebble, or posies): in all of the above, Salem is holding its own with Hoboken, Hackensack, New Jersey, or Mary Kay cosmetics.

Such is the stuff city

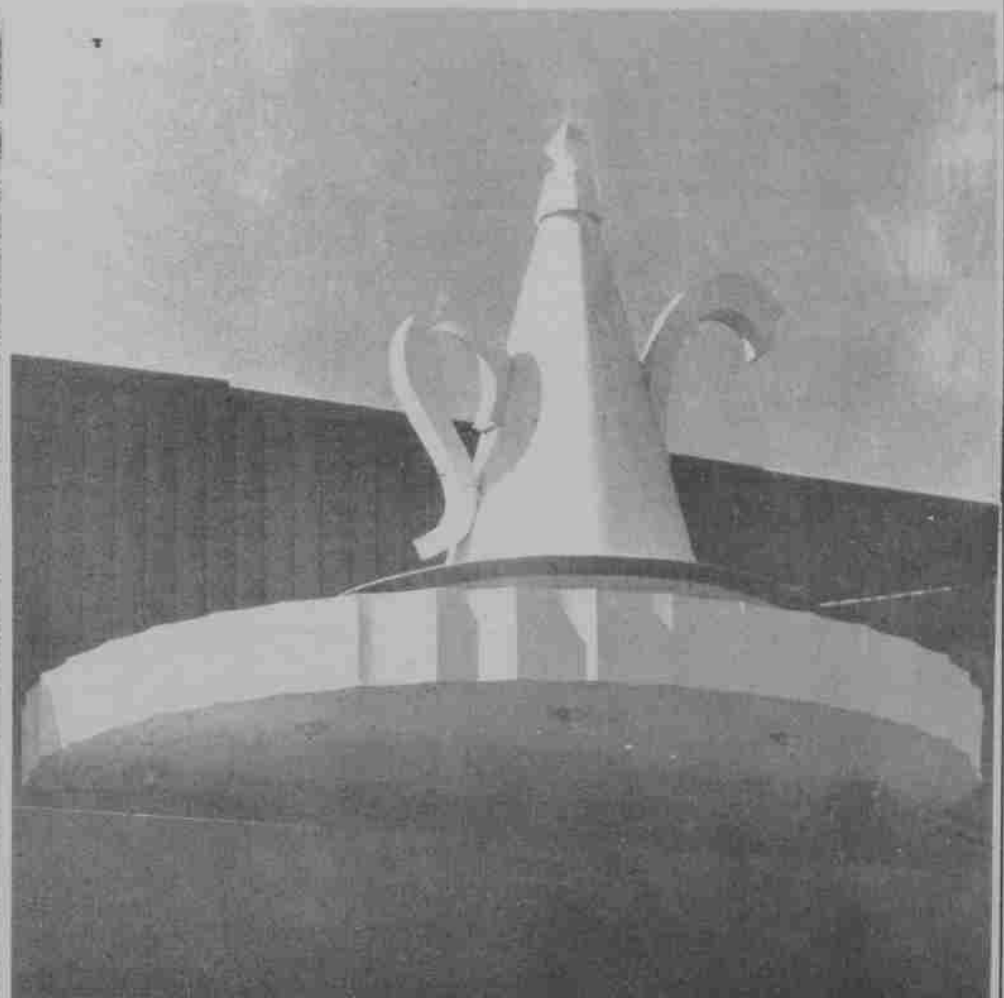


planners are made of. The inscrutable ordinance could be used to outlaw any pink or olive drab and glossy black (i.e., the "Capital Towers") edifice from being erected. Nip them in the bud.

But, before we become civic censors "for their own good," we must remember that some people

like pink flamingos on their lawns in December. And why not? It's a free country, isn't it?

And besides, our own bookstore sells official maroon and gold toilet seats to trustees and emeritus members of the Willamette Community, so who's to complain?



CASTLE & COOKE FOODS
MUSHROOM
DIVISION
581-2471



Keep that tan all winter or build up a new tan!
Effective October 1st the price of our 20-visit membership **INCREASES!**
Buy in September for only \$29.95. Your first visit at Mr. Sun is always free with no obligation!



2597 Commercial, S.E.
(Next to Circle-K)
363-5965

'Tribalism' staged at Playhouse

A willing cast of 17 and director Nick Leland have set their first production, *The Rimers of Eldritch*. (for our entertainment, enlightenment, and edification).

The Rimers of Eldritch is a play that must be seen (rather than just read) to be appreciated. Leland, who wrote his dissertation on the author, Langford Wilson, has evolved several strong concepts about the play which he utilized in other productions. The play is visually stimulating, highly complex, and extremely theatrical.

Wilson, says Leland, uses a variety of rituals, changing identities, and interlocking dialogues to portray a "town degenerated to a near tribal state."

The townspeople essentially commit crimes against themselves, not the least of which is making judgments based on false knowledge. The Truth in Eldritch is subjective, "spec-

ulation allowed to become objective reality," according to the director.

The basic ensemble was cast from 67 auditioners. A young cast, all are very excited about their roles. The entire cast will be on stage at all times working close to the audience.

There is no doubt the audience will be entertained. There are some humorous sequences with a young couple and some with a couple of gossiping biddies. *Rimers* is a play that Nick Leland hopes will "really reach the audience, not only the elite, but everyone."

The Rimers of Eldritch runs in October, the 3rd, 9th, 10th, and 11th at 8 pm, the 4th (two shows) at 7:00 and 9:30 pm; and the 5th (matinee) at 2:00 p.m. All shows are in Kresge Theatre. If you haven't already picked up your student theatre pass, tickets are available for \$3.00 for students.

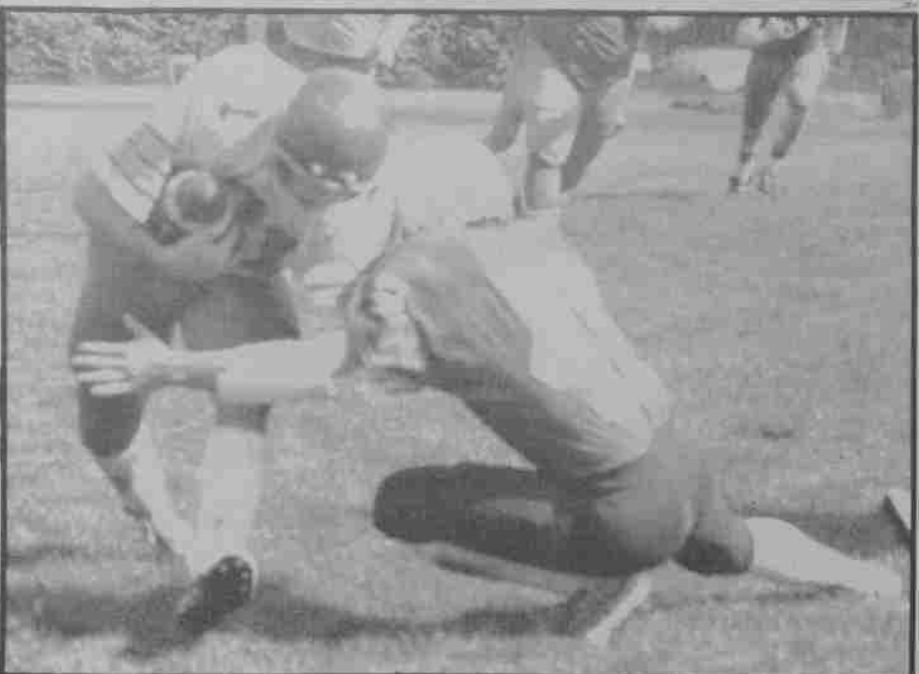
NEW SALAD BAR!

MUIR'S
DELICATESSEN

SANDWICHES SHAKES DESSERTS ORDERS TO GO

597 Winter St. S.E. 378-1450 Right next to the hospital

Sports



Lining up for action early in the contest, the Bearcat gridders proceeded to making it two in a row as at stake this Saturday, when Willamette takes on

manhandle the alumni 27-3 last weekend at McMulloch stadium. Hopes of highly-touted OCE here, beginning at 1:30 pm. *Nachtrieb photos*

PIER PARK INVITATIONAL

1-Portland, 2-Jerry's Pathology, 3-Greater Montana Track Club, 4-Willamette (110 pts.)

Men (4.65 miles) top 5 finishers

7	Kevin O' Conner	24:27
17	Rick Groenendaal	24:59
20	David Johnson	25:04
25	Mark Holmlund	25:15
41	Mike Shinn	25:54
(122 finishers)		

Soccer team 'out hustles' Pioneers for first win

By ANNE DENECKE
Collegian Sports Editor

Fresh faces and a new coach aside, the Bearcat soccer team started off the season with a scorching 4-3 victory over Lewis & Clark last Saturday at Willamette. To put the icing on the cake, this marked the first time Willamette has beaten the Pioneers in almost a decade.

According to Coach Harold Zagunis, the major reason for the win was the fact that "we just plain out-hustled Lewis & Clark." Zagunis and assistant Steve Caldwell were hesitant to single out any one player for his performance, preferring instead to emphasize that the squad played well together as a team.

Nevertheless, there were several performances which deserve recognition. Gary Narren was named Most Valuable Player, an award determined by the coaches of both teams. In addition, Matt Evans scored two goals (one in each half), and Bruce Higbie and John Hitchman each scored one goal. Zagunis was quick to point out, though, that Willamette did indeed make some mistakes, but "we'll work on them."

Zagunis and Caldwell exude confidence in their team, combined with the knowledge that it's a long road to being number one.

Both coaches and players note that one major difference between this year's squad and last season's is discipline. Previously, the unofficial rule was that a player could play in games without coming to practice. But Caldwell explained that aspect of Willamette soccer has changed, and Zagunis feels it is for the better. "I think most of the guys appreciate the fact that everyone is treated equally." Superstar or reserve, practice is a must.

Not only did this resounding win give the Bearcats a dose of early season confidence, it also has Coach Zagunis believing that the NAIA will now take notice of Willamette, whereas it hasn't always in the past. "Lewis & Clark has always been one of the top teams in the league. I think our victory proved that we are not a squad to be lightly contended with." The Bearcats will get another chance to prove this when they meet a strong George Fox team Saturday at 2:00 here.

Spikers determined

By STEVE LATHROP
News Bureau Director

Linda Garrett's defending WCIC champion volleyball team has gone from young to younger for the 1980 season. It doesn't seem to have the second year Willamette coach too worried, though.

Despite losing several members of last year's champs to graduation and transfer, Garrett can still call on five returnees and a bevy of talented newcomers to carry on the winning tradition.

Garrett certainly isn't overconfident, however. The Bearcat netters come off an outstanding 31-9 season that included a third place regional finish alongside the league championship. But this year's competition is so tight that the coach won't claim superiority.



Nevertheless, Garrett feels that the potential for an equally strong season is on hand. With Brenda Hansen returning at the net, the Bearcats have a legitimate superstar in the lineup. Hansen won All-Conference and All-Regional honors last year and figures to be an important part of the newest edition of Willamette volleyball.

Hansen will be Garrett's middle hitter, where she will use her power and excellent leaping ability to lead the spiking and blocking up front.

Help there should come from JoAnn Carreira, who, at 5-10, brings added height and hitting power. Carreira missed most of last year because of injury, but should be at full strength this time around. Junior Collette Au, and a pair of talented sophomores, Amy Byler and Esther Barainca, round out the returnee list.

Despite the returning talent, there will be pressure for every spot, Garrett maintains. She was quick to point out that no one has a place sewn up. A strong year of recruiting has seen to that, as Garrett must choose from an outstanding crop of newcomers for the bulk of her team. This doesn't worry Garrett who is very high on the prospects. "They're all very close," states the coach. "They are new people, but they are good people and I think we will be able to build on last year."

Last season was the best ever for Willamette volleyball as the record attests, but it doesn't mean Willamette has the title locked up. "The league's up for grabs again," noted Garrett. "Everybody's going to be tough." Willamette is included in that "everybody" list; Garrett points to strong passing and serving as the Bearcat's main strengths in the early going. The hitting game may well depend on successful adjustment to the 'Cat offense by the new people.

Free door admission with this ad and student I.D.
Tues thru Sat. nights

expires 10/31/80

1241 State St., N.E.



the
Hair and Friends
Co.
tel: 363-9483
2310 Commercial SE
Salem, Oregon 97302


King's Men

Specializing in Today's Hair Styles

WAYNE STECKLEY Owner & Manager
APPOINTMENTS
Wayne, Paul, Wayne Jr. & Dave
8 AM - 5:30 P.M. Tues thru Fri - Sat to 4 PM

146 13th SE

Near Willamette University — 1 block S. of State



363-2300
362-1868

Athletic scandals: Fun and games for all

By ANNE DENECKE
Collegian Sports Editor

The Athletic Scandal, a new game from Smith & Kearns, for all players ages 7-70, is designed so that even those who live in Britannia can play to win. After all, winning isn't everything, it's the only thing.

The rules of the game are quite simple. Each player is assigned to one of the following American geographical areas: New England, the East, the Midwest, the South, the Southwest, and the West. In addition, each player must designate himself as either a Division I, II or III school; one being institutions with an enrollment of 8,000

or less, and three being those schools with more than 30,000 students.

Using the maps provided, each player must randomly select a city in their respective area and check the accompanying list to see if there is a school in their division present. If there isn't, the player should repeat the process until a suitable city has been located.

Now it must be stressed that this selection process is to be completely unplanned and unorganized. The Smith & Kearns game designers suggest that players first consume at least 6 bottles of beer (or 3 straight shots of tequila), and then close their eyes before choosing the city.

The fun now begins. In the Athletic Scandal, anything goes: misuse of

university telephone credit cards; phoney travel funds; work study jobs which are already automatically done, or the scalping of tickets.

On the lighter side, sodomy, coercion, burglarly and rape are also allowed. As a matter of fact, anything which is illegal, immoral or just plain foolish is permissible.

If any one of these violations is thought to be taking place on any athletic team at the designated school, it must be reported to any authority (preferably the athletic director) within a minimum of three years. For this reason, it is suggested that all players request a leave of absence of at least one year from their present school or job.

The object of The Athletic Scandal

is to make sure, at all costs, that at least ten grand jury indictments are handed down, and that at least five of these return a verdict of guilty. For more advanced players, Smith & Kearns suggests that when a player passes go, he/she may pick up three more grand jury indictments. And for those whose jury is dismissed inside of one week, a lengthy stay in jail is recommended.

One final reminder to all players. In many cases, subjects wanted for arrest in connection with one or more of the above mentioned crimes have long-since fled the country. Therefore it is wise to make your plane reservations as early as possible; Katmandu, Nepal is known to be crowded in the fall months.



Hozenagle Photo

Intramural Highlights

Bob Johnson of Matthews led his Hall to a team victory in the Intramural cross-country race run Friday, September 19. His first place finish enabled Matthews to pick up 65 points. The Beta house was second in place and participation points with 50.

Intramural football has begun and the team standings after Monday evenings' games are as follows:

Mon.-Wed. League

Beta	2-0
K Sigs	2-0
Hawaiian C.	2-1
Phi Delts	1-2
Baxter	0-2
Lee	0-2
Belknap	0-0

Tues.-Thurs. League

Sig Chi	2-0
Law III	1-0
Law II	1-0
SAE	1-1
Matthews	0-1
Lausanne	0-1
Delts	0-2

Action this evening pits Lausanne against Matthews, while the undefeated Sig Chis tackle Law II. All contests begin at 6 pm at Sparks Field.

Peddlers interested in the Intramural bike race must meet Saturday, September 27 at 8:30 am. The five mile race will start at the bottom of Derby Hill at Bush Park. Each organization is limited to four participants, with the top three finishers' times, from each organization, being added up and points being distributed accordingly.

GRAND OPENING

\$78
if you're rich.

\$54
if you're smart.



Outsmart those big department store prices. Save 30-60% on first quality famous label fashions everyday!

PIC-A-DILLY

You don't have to be rich, just smart.

SMART MONEY

WORTH \$1

on any purchase at the new
Pic-A-Dilly store.

Lancaster Drive and D (Across from Lancaster Mall)
This coupon good through Wednesday, October 1, one to a customer, please.

Calendar

<p>Today 25</p> <p>Today 25</p> <ul style="list-style-type: none"> ●JAZZ CLUB meeting at 7 p.m., German Alcove, UC. ●FILM STUDIES presents <i>The Blue Angel</i>, 7:30 p.m., Playhouse. ●DISTINGUISHED ARTIST Series: Robert Reynolds, pianist, 2, 4, and 8 p.m., Smith Auditorium. ●EASTERN OREGON CHAUTAQUA will be the topic of a lecture given by Bruce Womack. Public Library, 7:30 p.m. ●SHORT FILMS OF WERNER HERZOG (maker of <i>Nosferatu</i>) will be presented by the Portland Art Association at the Northwest Film Study Center, Portland Art Museum, 221-1156. 	 <p>Rimers rehearsal for upcoming performance Hendrix photo</p>		<p>Tues. 30</p> <p>Tues. 30</p> <ul style="list-style-type: none"> ●CLA FACULTY ADVISING Workshop, 4-8 p.m., UC. ●FILM STUDIES: <i>L'atlante</i>, 7:30 p.m., Playhouse.
<p>Fri. 26</p> <p>Fri. 26</p> <ul style="list-style-type: none"> ●CARDINAL ROUNDTABLE, noon, Conference Dining Rooms 1 and 2. ●UNIVERSITY ROUNDTABLE, noon, Conference Dining Room 3. ●BOARD OF TRUSTEES meeting, 2 p.m., Alumni Lounge. ●FIELD HOCKEY Invitational, 2 p.m., Brown Field. ●ASWU MOVIE: <i>The Muppet Movie</i>, 8 p.m. and 10:30 p.m., Cat Cavern. ●CHARLIE PRIDE will be playing at the Portland Civic Auditorium, Portland. ●"THIS LAND IS YOUR LAND," lecture given by George Venn, Middle School Commons, at the Oregon Committee for the Humanities. 			<p>Wed. 1</p> <p>Wed., Oct. 1</p> <ul style="list-style-type: none"> ●OPTIMUM HEALTH DAY. ●ART EXHIBIT: Salem Women Artists, UC Gallery. ●CONVOCATION, 11 a.m. Optimum health will be the topic. ●FACULTY RECITAL: Army Barlowe, 8 p.m., Smith Auditorium.
<p>Sat. 27</p> <p>Sat. 27</p> <ul style="list-style-type: none"> ●DON GIOVANNI will be featured at the Portland Civic Auditorium, 8 p.m. ●THE FIREHOUSE THEATRE will be having a <i>Space Fantasy</i> featuring shadow puppets. 1 and 3 p.m., tickets \$1.50 for kids under 12 and \$2.50 over 12. ●FIELD HOCKEY Invitational, all day, Brown Field. ●FOOTBALL vs. OCE, 1:30 p.m., McCulloch Stadium. ●SOCCER vs. George Fox, 2 p.m., Sparks Field. 	<p>Sun. 28</p> <p>Sun. 28</p> <ul style="list-style-type: none"> ●UNIVERSITY WORSHIP, 7 p.m., Alumni Lounge. Professor James Hand will preach on "The Doctrine of Creation." ●ST. JOHN'S LUTHERAN CHURCH is hosting a barbeque for students and friends, 5 p.m. at the home of Gordon Schumacher, 545 Rose St., phone 370-8685 for information. ●STUDENTS FOR SEVEN (nuclear energy bill), 7 p.m. in the Harrison Conference Room, UC. 	<p>Mon. 29</p> <p>Mon. 29</p> <ul style="list-style-type: none"> ●ART EXHIBIT: Burrell Brechman, Hallie Brown Ford Gallery. ●THE SALEM SCIENCE FICTION Society will be holding a meeting in the Autzen Senate Chambers, UC, 7:30 p.m. ●AUDITIONS: <i>You Can't Take it With You</i>, at the Pentacle Theatre, Salem. Cal 364-0585 for information. 	<p>Etc.</p> <p>ETC.</p> <ul style="list-style-type: none"> ●A \$1000 GRAND PRIZE will be awarded in the Sixth Annual Fall Poetry Competition. Rules and official entry forms are available from World of Poetry, 2431 Stockton Blvd., Dept. N., Sacramento, CA 95817. ●NATIONAL COLLEGE POETRY Contest, cash prizes. Deadline Oct. 31. Write: International Publications, P.O. Box 44926, Los Angeles, CA 90044. ●ITEMS FOR THE <i>Collegian</i> calendar can be sent to the <i>Collegian</i> or dropped by the Publications Office. Deadline is noon on Monday and is enforced. Please limit items to a brief paragraph and include a phone number for further information. We reserve the right to edit any material due to space limitations. ●STUDENT THEATRE PASSES will be available only through Oct. 11.

(continued from page 1)

Econ classes

business before, as have all the professors, and doesn't like what happens to the nature of a department with a business orientation. He also believes that students are misguided in thinking that business will be more helpful in a career than economics.

Beaton says there is more pressure from outside the department, among the administration and faculty in the humanities, for business as an enrollment booster than there is among the economics professors. If a faculty member is added, he would prefer that he be primarily another economist, with perhaps some experience in business.

Dr. Hanson believes that the combination major can be compatible with

a liberal arts college. He does not want to "cater to the whims of students" by offering whatever they currently think is "exciting and relevant." Unwilling to see courses such as marketing offered, he is prepared to offer courses on the relationship between Business and Government. Hanson considers more business course offerings viable, but not at the expense of existing economics courses.

Reaction from students is mixed. There does not seem to be overwhelming dissatisfaction with the system as it now stands. At the same time, there is the question of whether business courses suit the needs of our university. There is no easy answer. A sorting-out of Willamette's priorities seems to be necessary: in fact imminent.

(continued from page 1)

Advising

other fields of study, student services, career planning, and so on. On the positive side, students frequently indicated that the present system was functional because: 1) advisers were quite knowledgeable about their own fields, 2) advisers are willing to spend as much time with the students as they desire or require, and 3) a feeling that the adviser was genuinely interested in the students as persons.

The culmination of these research and "data-collecting" endeavours is an advising workshop, scheduled for Tuesday, Sept. 30. In addition to the already mentioned areas of con-

cern will be consideration of some alternative types of service in place of advising, as well as some new concepts in advising. The possibility of designating transfer, freshmen, or major advisers will be explored.

An "adequate" advising system, though functional, may not be competitive in these demanding times. To be sure, students at Willamette have not been under-advised. It does appear, however, that adjustments to the system would be timely. As Bothun stated, "The philosophy in general is that academic advising at Willamette University is done well, but there is always room for improvement in a forward-looking institution."

Fashion Lines

The watchword in fashion this fall is prep. Whether this trend has been observed at Willamette is not the question. Though the sudden ballooning interest in prepdom may lead some to believe that this is a new phenomenon, prep has been the attire on col-

lege campuses for as long as ivy has clung to the walls of buildings.

While we were surveying the campus, a new coed alluded that some fashions have recently been trying to squelch prep. Even as near as St. Mary's Academy, students have been tampering with the placement of alligators on their shirts. Other avant-garde dressers have been spotted wearing their argyle socks inside out. Though such gestures can hardly be viewed as a counter-trend it is certainly an indication that, at least, certain groups are ready for a change.

There are always those who will promote change for change's sake. As soon as new fashions become universal, these individuals will begin searching for something new. They have evidently attracted a large enough audience to warrant our look at the deflation of the prep balloon.

Prep dressing has hit its peak this fall, with almost all clothing stores directing their ad campaigns toward it. This saturation is bound to decline after a time, as will any fashion trend. The difference is that prep will not disappear like the Nehru jacket, but will return to its previous levels. Because prep has always been around, it always will be around; on college students, and in the classic looks of businessmen and women.

If you desire to integrate prep into your own wardrobe, we suggest the following essentials: button-down oxford cloth shirts, Izod shirts, wool sweaters, straight-leg pant (natural fiber), argyle socks, and penny loafers or top-siders.

