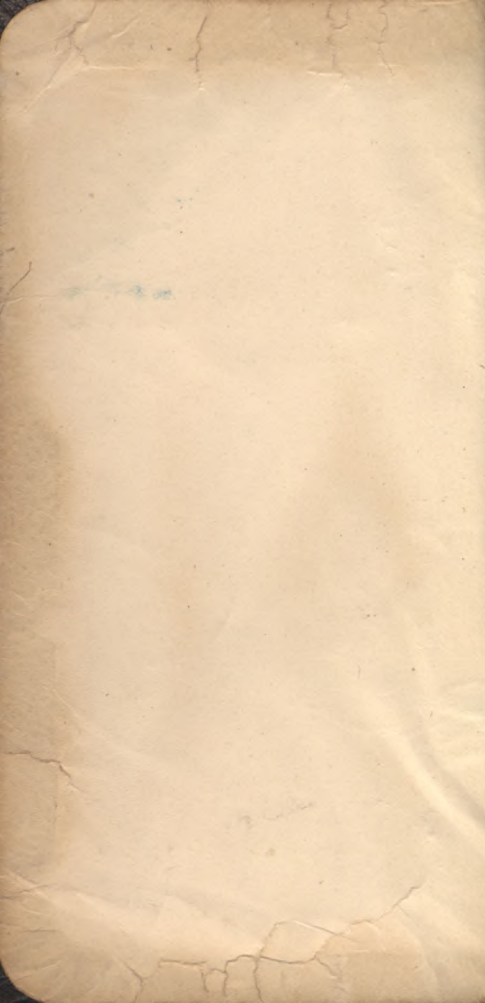


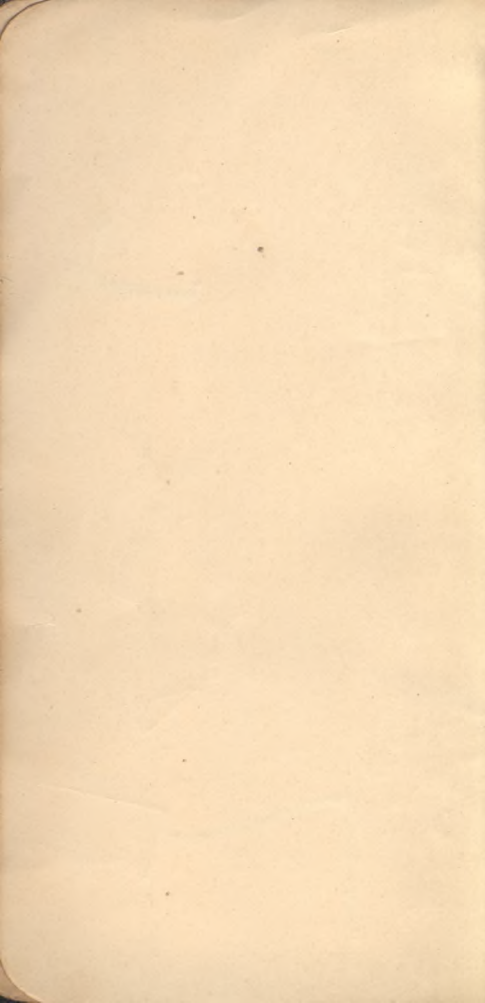
# Willamette

1913-14

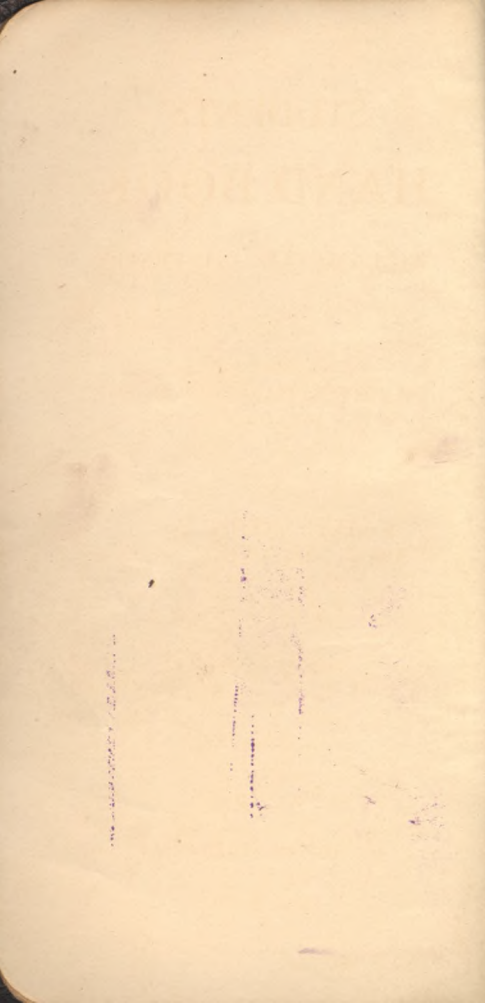


4

7







# STUDENTS' HAND BOOK

WILLAMETTE UNIVERSITY

---

Presented by the  
CHRISTIAN ASSOCIATIONS  
OF WILLAMETTE

---

KATE BARTON, Editor  
IVAN G. McDANIEL, Manager

---

## ASSISTANTS:

Beryl Holt

Elizabeth Luce

L. Proebstel

Paul Irvine

C. M. Byrd

---

SALEM, OREGON

1913-1914

Vol. XIX.

STUDENT  
HAND BOOK

THE UNIVERSITY OF CHICAGO

1900-1901

THE UNIVERSITY OF CHICAGO  
PUBLISHED BY THE UNIVERSITY PRESS  
CHICAGO, ILL.

THE UNIVERSITY OF CHICAGO  
PUBLISHED BY THE UNIVERSITY PRESS  
CHICAGO, ILL.



# CALENDAR OF SCHOOL YEAR

## SEPTEMBER, 1913

S	M	T	W	T	F	S
	1	2	3	4	5	6
7	8	9	10	11	12	13
14	15	16	17	18	19	20
21	22	23	24	25	26	27
28	29	30				

## FEBRUARY, 1914

S	M	T	W	T	F	S
1	2	3	4	5	6	7
8	9	10	11	12	13	14
15	16	17	18	19	20	21
22	23	24	25	26	27	28

## OCTOBER, 1913

S	M	T	W	T	F	S
			1	2	3	4
5	6	7	8	9	10	11
12	13	14	15	16	17	18
19	20	21	22	23	24	25
26	27	28	29	30	31	

## MARCH, 1914

S	M	T	W	T	F	S
1	2	3	4	5	6	7
8	9	10	11	12	13	14
15	16	17	18	19	20	21
22	23	24	25	26	27	28
29	30	31				

## NOVEMBER, 1913

S	M	T	W	T	F	S
						1
2	3	4	5	6	7	8
9	10	11	12	13	14	15
16	17	18	19	20	21	22
23	24	25	26	27	28	29
30						

## APRIL, 1914

S	M	T	W	T	F	S
			1	2	3	4
5	6	7	8	9	10	11
12	13	14	15	16	17	18
19	20	21	22	23	24	25
26	27	28	29	30		

## DECEMBER, 1913

S	M	T	W	T	F	S
	1	2	3	4	5	6
7	8	9	10	11	12	13
14	15	16	17	18	19	20
21	22	23	24	25	26	27
28	29	30	31			

## MAY, 1914

S	M	T	W	T	F	S
					1	2
3	4	5	6	7	8	9
10	11	12	13	14	15	16
17	18	19	20	21	22	23
24	25	26	27	28	29	30
31						

## JANUARY, 1914

S	M	T	W	T	F	S
				1	2	3
4	5	6	7	8	9	10
11	12	13	14	15	16	17
18	19	20	21	22	23	24
25	26	27	28	29	30	31

## JUNE, 1914

S	M	T	W	T	F	S
	1	2	3	4	5	6
7	8	9	10	11	12	13
14	15	16	17	18	19	20
21	22	23	24	25	26	27
28	29	30				

## TABLE OF CONTENTS

---

College Calendar.....	7
Welcome .....	8
Y. M. C. A. ....	10
Y. W. C. A. ....	15
Student Volunteer Band .....	19
College of Liberal Arts.....	21
The Student Body .....	22
General College Interest .....	23
Student Publications .....	23
Clubs and Societies .....	24
Musical Enterprises .....	39
University Festivities .....	42
Athletics .....	48
Salem Y. M. C. A. ....	55
Songs and Yells .....	57
Miscellaneous .....	58
General Information .....	67
Game Scores .....	68-70
Class Schedules .....	74-76

## COLLEGE CALENDAR.

September 15-17 — Registration and  
Special Examinations in College  
of Liberal Arts.

Teachers' College.

Academy.

September 18—Regular work begins.

November 27-28—Thanksgiving  
Recess.

December 19, 3:30 p. m.—Christmas  
Vacation begins.

January 6, 8:00 a. m.—School work  
resumes.

January 26-30—Examinations of First  
Semester.

February 2—Registration Second Se-  
mester.

February 5—Day of Prayer for Col-  
leges.

April 14—8:00—School work resumes.

May 1—May Day Exercises.

May 30—Memorial Day.

June 9—Examinations of Second Se-  
mester begin.

June 14-17—Commencement week.



EATON HALL

## WELCOME.

We welcome you with just the gladdest, warmest welcome we can give. We welcome you to our college, to our Y. M. and Y. W., to our classes, and to all of our school activities.

We welcome you for what we feel that you can be to us and for what we also feel that we can be to you. Be our friend and let us be yours. Take part in our Y. M. and Y. W. C. A., for in them you will find just the help and inspiration that you need in your Christian life. In them you will find a place not only to receive spiritual help, but also to give it. There is a work there which no one but you can do. If you fail, that work will be left undone. But we feel that you will not fail, but will work with us. That you will fill your place gladly, willingly, wherever it is. If it be a

small place, fill it nobly! If it be a large place, fill it well! Know that the real value of your life is not what you accomplish, but how you do your work. You are measured not by results but by capabilities. If you have great talent, much will be required of you; if little, you have still a field for work.

Then we welcome you to the joyous college life with its fun and frolic, with its work and study, with its contests of strength, both physical and mental. Be a force in the University! Find out for what you are best fitted and endeavor to excel in your line.

Join a literary society. In it you will receive a training for your after life which you can get nowhere else. Here you can learn to be frankly and quietly yourself, even before an audience. Here you will learn self-confidence and self-control. Then, too, you will have a better opportunity for social training than you can find elsewhere.

So again, let us bid you welcome. Be not only among us, but be one of us! Enjoy your college life, every day and hour of it. Use wisely every opportunity for culture and service. "Get thy tools ready; God will find thee work."

---

Thou dost conspire against thy friend, if thou but think'st him wrong'd and makest his ear a stranger to thy thoughts.

## RECIPE FOR HAPPINESS.

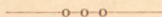
If you were busy being kind,  
Before you knew it you would find  
You'd soon forget to think 'twas true  
That some one was unkind to you.

If you were busy being glad,  
And cheering people who are sad,  
Although your heart might ache a bit,  
You'd soon forget to notice it.

If you were busy being good,  
And doing just the best you could,  
You'd not have time to blame some  
man  
Who's doing just the best he can.

If you were busy being true  
To what you know you ought to do,  
You'd be so busy you'd forget  
The blunders of the folks you've met.

If you were busy being right,  
You'll find yourself too busy, quite,  
Because he's busy being wrong.  
To criticize your neighbor long  
—Rebecca B. Foresman.



Y. M. C. A.

Another college year is about to open and its events will soon be recorded in the annals of Old Willamette. Whether or not this year is to be a success or a failure depends upon the influence brought to bear upon



the separate individuals upon the campus, who are to be the new leaders of college life. In this work, no organization will make its influence felt more than the 'Varsity Young Men's Christian Association.

The object of this society of consecrated Christian young men is to promote growth in Christian character, as embodying the highest standards of physical, intellectual and religious life among the men of Willamette, and to enlist them in Christian service in the college, and to prepare them for similar work in other communities after leaving college.

Membership in the association is based solely upon Christian life and service, and any undergraduate who pledges himself to this, and pays his membership fee, is a member in full standing. Men of all sects and creeds are welcomed. No discrimination whatsoever is shown.

In the years past the membership of the Y. M. C. A. has always been representative of the best life of the university, including the leaders of every laudable college activity. On its cabinet are to be found men who are members of every athletic, literary and social organization in the school.

The field covered by the Y. M. C. A. is a broad one, and includes everything that in any way would better the students, individually or as a body. Of all the work carried on by the Association in the past, no one

phase has been given more emphasis than the Sunday afternoon devotional meeting which is intended to show that religion is a practical affair, a rule of life and an obligation to do well. The meetings are informal, the music is inspiring, and in every way they are the most enjoyable and helpful gatherings that the college man is privileged to attend. During the coming year the best men obtainable will present and discuss problems and thoughts that will be of special interest to college men.

The intelligent study of the Bible and of Missions is by no means neglected. During the past year a large number of the men on the campus were enrolled in study classes.. Plans have been completed for the continuation of these classes and all men are urged to join one of them.

During the past year Bible classes were conducted at Chemawa under the supervision of the 'Varsity Y. M. It is expected that this work will be continued this year.

The social side of college life is also given due consideration by the Y. M. C. A. It takes upon itself the welcoming of every man and sees that he is comfortably located and made acquainted with others. No event in the whole year is more enjoyed than the annual "Stag Mix" which is held during the first week of school, when the new men are taken into the fellowship of Old Willamette. The joint Y. M.-Y. W. reception is held a week



later, and it is here that you meet your "fate." The purpose of this gathering is to introduce the Frosh to Willamette life, for the other classmen to renew old friendships, and to start on its course the wave of enthusiastic loyalty to Willamette that shall successfully carry us on through a year of study, social life and athletic victories. Other social affairs are given at intervals during the year, so that you may not become too "bookish."

We have here recounted in a very incomplete manner a few of the phases of Y. M. C. A. work. But there is still one field of influence where the Association makes itself strongly felt, and that is in the very spirit of Willamette. As the only organized body of Christian students the Associations must be recognized as influential factors in keeping up the demand for clean athletics, for honesty in class room, and in every way emphasizing the good features and reducing to a minimum the bad features of college life.

In conclusion, fellow student, we welcome you to our Association. We urge you to make free use of the Association rooms in Waller Hall. Become a booster for W. U. and the Y. M. And lastly, be a manly man!

#### Officers.

President .....	Geo. Vandevert
Vice-President.....	Eric P. Bolt
Recording Secretary..	Tinkham Gilbert
Corresponding Secretary.....	
.....	George Odgers

Treasurer.....	Ben C. Neustral
<b>Chairmen of Committees.</b>	
Bible Study.....	Seth Axley
Mission Study.....	Lester Proebstel
Religious Meetings.....	Paul Irvine
Finance.....	B. C. Neustral
Social.....	Howard Jewett
Membership and Employment.....	
.....	Leland Sackett
Extension.....	Fred McMillan

It does not take great men to do great things. It only takes consecrated men. The earnest, resolute man whom God works through is the medium by which his greatest work is done.—Philipps Brooks.



## COLUMBIA BEACH

Columbia Beach is the mecca toward which many college men of the Northwest look for an ideal ten days' outing. Here they meet to become acquainted; they live together in tents and dine in one great hall of festive tables. Here they meet in physical combat, such as baseball, tennis, track and football; and separated from the camp by a half-mile of sand dunes lies the great Pacific Ocean for surf bathing, clam digging and innocent playing with the waves. On the other hand the men hear great messages from acknowledged leaders of men in the business, educational and spiritual fields of labor. The Christ spirit prevails and men face fundamental

questions of true living. Decisions of far reaching significance are made and life purposes are formed. Almost without exception, the men leave the conference with higher ideals, firmer resolves and a greater determination to enter into the richness of a life devoted to the service of mankind and the glory of God. An ideal combination of the physical, mental and spiritual life is provided for by the plan of the conference.

### Y. W. C. A.

Are you a young woman entering the doors of Willamette? Then no matter whether your hair is curly or straight, whether your nose is "tip-tilted" or Grecian, whether your turn of mind is classic or scientific,—the Young Women's Christian Association of Willamette University gives you a hearty greeting.

Whether you are an old student, or a new one, if you have the high ambition to make of yourself "a perfect woman, nobly planned," winsome to know and strong in service, we are sure that you will come and be one of us. If you have never before belonged to a Y. W. C. A., we are eager to share with you our many pleasures and privileges.

Our Association seeks to place the "cap-sheaf" of a liberal education, and of a well-rounded character; its aim is more abundant life. This ideal is realized in many ways. In the first

place, the Y. W. C. A. is the most democratic social group among the women of the University. Regardless of rank in scholarship, of social standing, of previous environment, or of future plans, to each girl the Association extends a warm welcome. Here she may make many acquaintances, enjoy the companionship of happy, earnest Christian girls, and form lasting and invaluable friendships. Her social nature will not be neglected. What new girl does not find her bit of homesickness "nipped in the very bud" by the afternoon at Chestnut Farm? There the games enjoyed on the spacious lawn, the great tubs of apples and yellow peaches, the merry girls and cordial hostesses, make it an event long to be remembered. And what fun it is to find out other people's names amid the bright lights and cheerful din of the joint Y. M. and Y. W. reception! But sociability does not cease here, for delightfully informal little teas are frequently served after Association meetings, and this year a reception was given by the cabinet to the girls in honor of their Advisory Ladie.

In the second place, it is a Christian Association. The Thursday afternoon meetings, held in the Rest Room, are a constant source of inspiration and help. Here the busy college girl finds her perplexities smothered out, and her ideals refined and strengthened under wise and inspiring leaders. We have been especially fortunate this

year in securing, besides a number of our professors, such speakers as Dr. Wilkinson; Dr. Bauer and Mrs. Ford-Pickering.

A strong note of social service has been felt throughout the year, especially in the series of meetings led by Miss Constance Whealdon, Miss Chandler, and Mrs. Pichard, all of Portland. Further inspiration and breadth of vision have been found by many of the girls in the Bible and Mission Study classes.

But, more than this, if you are seeking an opportunity for service and a wider sphere of influence, you may surely find it in our Association. We need strong, sweet, capable young women on our cabinet and on our committees. We need your musical talent for our meetings, your aesthetic talent for our posters, and your literary talent for our "write-ups." In fact, there is a particular place in our Association that nobody but you can fill.

A wide field of work is found on the Extension Committee. At the Salem High School the Junior Branch of the Y. W. C. A. has already become a well-established and flourishing Association. The Association at the Chemawa Indian School, though strong in other respects, has lacked systematic Bible study. So a number of graded classes have been organized



and conducted there by the Willamette girls.

May you join with us for our mutual benefit, and together may we be a power for good in the University.

### Officers

President.....	Mrs. Lola Belle Bellinger
Vice-President.....	Kate Barton
Secretary.....	Mary Cone
Treasurer.....	Helen Wastell

### Chairmen of Committees.

Bible Study.....	Ruth Hodge
Mission Study.....	Aetna Emmel
Religious Meetings.....	Gertrude Eakin
Finance.....	Helen Wastell
Social.....	Lottie Penn
Membership, Handbook, Employment, etc. ....	Kate Barton
Extension.....	Inez Goltra

"When you educate a man you train an individual, but when you educate a woman you train a family."

### GEARHART.

The crowning event of the year in Y. W. C. A. circles is the summer conference at Gearhart. Here the college girls of the Northwest gather for ten glorious days by the ocean. The location of Gearhart makes it a delightful place for all kinds of jolly good fun on the shore and refreshing play in the surf.

Here, too, the girls receive zeal and inspiration, from the classes and lectures given by the National Y. W.

C. A. leaders, that give new life and efficiency to the work at home.

Don't fail to plan for at least one conference during your college course. For it will always be a source of help and joy to you.

## STUDENT VOLUNTEER BAND.

The Student Volunteer Band is an international organization, now in its twenty-eighth year, of all people who have as a definite aim foreign missionary work. Membership is open to anyone who signs the following pledge:

"It is my purpose, if God permit, to become a foreign missionary."

And in response to the watchword of the Society, "The Evangelization of the World in This Generation," thousands of carefully trained workers have gone out into the various heathen lands or the islands of the seas.

Of the twenty-eight members of the Willamette Student Volunteer Band of the preceding year, sixteen returned to college in September, 1913. During this year eight new recruits have signed the declaration cards.

Regular meetings have been held every Monday evening, with one open meeting each month. The programs have consisted of carefully prepared discussions of various fields or of practical phases of Missionary life; while the news item policy in response

to roll-call has insured continuous missionary reading on the part of the Volunteers.

Rev. Parker, Miss Kenworthy and Mr. and Mrs. Guthrie, all returned missionaries, have brought messages of help and inspiration during the year.

An encouraging bit of extension work has been accomplished by the Band during the past nine months in the support of a native preacher in Korea. In addition to the fifty dollars necessary for this work, a special gift of about ten dollars has been raised.

One of the happiest occasions of the year was the closing meeting, the annual picnic and bonfire, when, after an afternoon of fun and a sumptuous supper, the greetings of missionary friends and visitors and the farewells of the outgoing volunteers were exchanged.

The Willamette Band has been especially favored in having as its leader Miss Laura Austin, for five years missionary to India.

There is the heartiest co-operation and good fellowship between the Band and the Christian Associations, the new president of the Y. M. C. A. and both missionary chairmen being Student Volunteers.

For 1914-15 the officers are as follows:

Leader.....	Frank Francis
Vice-Leader.....	Aggie Alford
Secretary-Treasurer.....	Naomi Runner





NAPLE WALK

## COLLEGE OF LIBERAL ARTS.

The College of Liberal Arts has trained men and women who have taken leading parts in moulding the Pacific Northwest in its formative stage. The recent increase in endowment places it in a better position to prepare young men and women for leadership in the complex and exacting conditions of the present. This endowment has been contributed by friends who believe that an institution which subordinates a living to a life, while maintaining a sympathetic attitude toward the practical demands of its environment, blending the religious, the cultural, and the vocational, thereby giving to the liberal social significance and importance, can best equip young people for independent and original achievement in the highest lines of endeavor. In realizing

this end the College seeks to train its students to clear thinking, deep feeling, and noble ideals of service.

Education is like measles. Having been to college doesn't prove that you've caught it, but only that you've been exposed to it.

—o—o—o—

## THE STUDENT BODY.

The Student Body is the legislative organization of the students of the University. Its purpose is to promote the general welfare of the school and secure the co-operation of all the students in any matter which concerns them as a whole. The membership includes all students registered in any department of the University, who have paid their Student Body dues. While being under the supervision of the President and Faculty, it has control of such intercollegiate activities as debates and athletics, the business management of The Collegian, and social affairs of a general character.

The officers elected for the ensuing year are:

President.....	Errol Gilkey
Vice-President .....	Eric Bolt
Secretary.....	Edith Sherwood
Treasurer.....	Leland Sackett
Editor of The Collegian.....	
.....	Bruce McDaniel
Manager of The Collegian.....	
.....	Paul Manning

Great men were made so for others.



## GENERAL COLLEGE INTEREST.

### STUDENT PUBLICATIONS.

#### **The Willamette Collegian.**

The Collegian is the official college paper. It is the mirror of the life upon the campus. It serves as a medium of expression for the students as well as a college news sheet. It is a six-column four-page weekly. It has grown from a monthly magazine founded in 1889. The editor and manager are elected by the Student Body. The paper is under the supervision of the English Department and credit is given to its editors in proportion to the quality and quantity of their work. The regular Student Body fee includes this paper.

#### **The Wallulah.**

The name given to the Junior annual is that of the heroine in "The Bridge of the Gods," an Indian story of the

Willamette Valley. This is an intensely interesting book and every student should have one for each year of his college life. It is an illustrated magazine in which the deeds of the various individuals and classes are told. Its literary and artistic productions have real merit. The comic section records the thoughts of the wittiest people at their most inspired moments, and will give you something to laugh over when you have long left the college halls. It is bound in leather and is a fitting climax to the college paper.

### **The Hand Book.**

The Hand Book is published at the close of each school year by the Christian Associations. It is a pocket edition of useful information of especial interest to new students. There is also a space for memoranda, addresses, etc., which make it just what each student needs.

## **CLUBS AND SOCIETIES**

### **ADELANTE.**

The Adelante Literary Society, as its name suggests, is an association of progressive college girls with high ideals of literary and social development. The Adelante Hall is a pleasant and attractive place where good-fellowship, integrity and refinement are always present.

Founded in the fall of nineteen hundred and six under the Spanish name of Adelante, meaning "progress," the Society has even since been true to her name. Although progressing rap-

idly toward her aims, she still retains the vigor and enthusiasm of youth in such a way as to be a constant inspiration to her brother society, the "noble sons of Daniel Webster."

The programs rendered each Friday afternoon aim to foster and cultivate the best along literary lines. To this end Literature, Art, Music, History, Travels, Current Events, Parliamentary Practice, and other subjects of practical value to every college girl are discussed. This year Mrs. Patterson addressed us on her trip to Alaska, while Professor Peck spoke on his travels in Central America; Mrs. Walsh gave a lecture on "The Pictures in the Louvre."

Of such a character are the varied and interesting programs.

But we remember that man is a social being. Often Sir Knight Websterian goes forth for my Lady Adelante, and it is not strange if soon the halls of brother and sister society resound with mirth and gaiety. You are swept on by Progress! The Romance calls you! Be one of us in our work and play!

## WEBSTERIANS.

The Websterian Debating Society was organized eight years ago and, from the first, has been the peer of the other societies. It was founded by men who desired a high standard for literary work and who believed that friendly competition was the best



means to raise the standard. For four years the society met in inconvenient halls, but when opportunity was given they secured better rooms which they, together with their sister society, the Adelante, completely remodeled and furnished.

Though hindered by this lack of halls, the Websterians were making themselves felt in literary and executive positions of the Student Body. The roll of Websterians who have represented Willamette in intercollegiate oratory and debate or as Student Body officers is long. This last year has added both orators and two debaters, who represented Willamette in intercollegiate contests.

The Websterian Society is composed of men who are taking literary work for the benefit they themselves can gain, and also what they can give, the strict rules governing attendance make it impossible for one without purpose to continue as a member. While no definite limit is placed to the membership, the society at present numbers about thirty-five.

The meetings of the society are held on Wednesday evening of each week. A good program is rendered at each session, consisting of papers, discussions, lectures and debate on live topics. Emphasis is also laid on impromptu work.

While majoring in literary work the social side is not neglected. Several social meetings are held during the year jointly with the Adelantes, which

are awaited with eagerness by both societies. Each year the Adelantes and Websterians have the pleasure of an evening upon the river. This is the last social event of the year, and the memory of its delights lingers throughout the summer.

## PHILODOSIAN.

The college woman above all others desires poise, self-control, and the ability to take the initiative. The Philodosian Literary Society seeks to bring out in its members these qualities.

This society is the oldest in the college and it has aimed always for quality rather than quantity. A large number of new candidates were admitted this year and successfully piloted through the mysterious dark passageway leading to full membership. But at no time during the past few years has the membership exceeded thirty-five. For this reason the girls become well acquainted, each one having influence in the activities of the society and a better chance for the full development of latent literary powers, and executive ability.

For graceful, dainty receptions, the Philodosian girls have no peers, while in a gay mood and particularly at the annual Thanksgiving banquet, old restraint and formalities give way to mirth and full enjoyment.

When the delightful spring days come, the entire society is seized with

the spirit of fun. As the contagion is irrepressible, it spreads to the brother society and together they leave for a hilarious picnic. Last year the Philodorian joined the Philodorsians in a well-appointed banquet celebrating the thirtieth anniversary of the society, and given in honor of the alumni members. Many eminent alumni members who have won success and distinction graced the board on this occasion.

The society has, for many years, aided in the development and rounding out of many of the noble women, who have entered Willamette and have passed over its threshold into the larger activities of life.

### PHILODORIANS.

The Philodorian Literary Society of Willamette is the oldest organization of its kind, not only at Willamette, but in the Pacific Northwest. The object for which this society strives is the diffusion of knowledge among its members, and specifically the development of those latent powers which, without doubt, lie hidden under the shell of every masculine soul. The cosmopolitan spirit which pervades the Philodorian Society is especially worthy of note. Upon its roll all the affiliated colleges are well represented, thus enabling the members to obtain a broader view of student life by coming into contact with men whose personal interests differ from their own.

Believing that the best way to develop literary and forensic talent is



through social contact, programs are prepared and presented by the members each week during the school year, giving each individual a chance to display and develop his genius along these lines. As a result the Philodorian Society has furnished its full share of worthy defenders of the "Cardinal and Gold" in intercollegiate debate and oratory. In 1912 one of its members won the Inter-State Prohibition Contest and represented the West at the National, losing first place there by the narrow margin of one point. Representatives of the Philodorian Society have won the cup for which the four college societies compete in oratorical contests, five out of the eight times offered. The Mock Legislature, which was conducted jointly with the Websterians at the time the State Legislature was in session, proved interesting and evidenced the fact that within these two societies were many budding statesmen.

While the primary purpose of the Philodorian Society is to develop literary genius, yet the social side is not overlooked. It is when the sister society, the Philodosians, and the Philodorians get together at a reception, banquet, boat ride, or picnic that "dull care" is driven away and the august parliamentarians relax and lend themselves to the jollity of the occasion. One of the most important social events of the school year occurred last February when these two societies celebrated the thirtieth anni-

verary of their organization by holding a banquet at the Marion Hotel. Men and women of prominence were present from various parts of the Northwest, making altogether about one hundred and fifty members in attendance.

The Philodorians welcome a limited number of new members who will be active and willing to do their part in the society. Believing that the experience gained from a literary society is of great importance to a college education, each student is urged to make an effort to secure membership in one of the literary societies.

## ADELPHIAN.

As Oregon prides herself on Willamette, her oldest institution, so Willamette is justly proud of her young institutions, the Adelpian Literary Society and her brother society, the Criterions. When the need for segregation of the College and Academy student in their literary activities was felt, these two societies were formed.

Though they are but two years old, they have done remarkably well, with the College societies as their pattern.

The programs aim to develop genius along practical and original literary lines; thus original stories, novel essays, "spicy" debates and stirring parliamentary practice have places on our programs.

Moreover, there is a social side to be considered. It takes but one joint

society party at the beginning of a semester to make the old students glad to get back and the new ones glad that the came.

If you are a "prep" in W. U., plan to cast your lot with the Academy societies. You'll never regret it.

## CRITERIONS.

The Criterion Literary Society is an organization of Academy men, for the purpose of developing the art of good conversation and public speaking. To estimate the value of this training socially to its members would be impossible. Good, live, up-to-date topics are discussed and debated upon in such a way as to create intense interest. Not only will this society develop the literary side of your nature, but also the social side. You become acquainted with the leading men of the Academy and form friendships which are never regretted nor forgotten. No matter what you are, where you came from, or what you intend to be, your student life will not be complete without the literary society. The membership is limited, so get your application in early.

---

## ITS UP TO YOU.

If you want to be cheerful, just set your mind on it an' be it. Can't none of us help what traits we start out in life with, but we kin help what we end up with.—Mrs. Wiggs.

## FORENSICS.

Forensics during the past year have been advanced to a position of importance among student activities in Willamette. Inter-society contests have been held for a number of years with great enthusiasm, but it was only during the past year that the revival of interest in intercollegiate debate has been very marked. The big contest of last year was a double debate between Idaho and Willamette, in which W. U. won the decision at Moscow. The students are becoming more and more interested as they see the advantages offered by the work.

## THE GIRLS WILLAMETTE CLUB.

The Girls' Willamette Club, youngest of organizations in Willamette University, was organized during the school year of 1911-12 and comprises the choicest names on the girls' student roll. It came into existence as a concrete expression of that finer spirit which pervades our student atmosphere and radiates from its life inspiration and strength for the maintenance of the student's best in his athletic, social and literary relations with his fellows.

While the organization is solely of the girls it is not solely for the girls. It recognizes the influence of womanhood as everywhere potent and determinative of standards. It knows that

as the girls of the school live up to their ideals will the boys be held to a high standard.

The club requires worthy conduct of the athlete on and off the playing field if he is to be honored as a hero; it has no lower standard for any man or woman in the University.

As a tangible expression of the club life, there have already been observed two very interesting services in commemoration of the honored name of Jason Lee, whose remains are interred in the sacred "Missionary Square" in the local Lee Mission Cemetery. Upon this square there is soon to be erected a flagstaff from which the Stars and Stripes shall constantly float, bearing the message of the service Lee rendered in saving the Oregon territory to our United States.

The club has other plans in the making which tend to a greater life and a better Willamette. It invites to its membership all girls whose ideals are high and whose purpose firm for the living of the larger life. It challenges each student in attendance to his noblest achievement. Let the Girls' Willamette Club help you.

## TEUTONIA.

The Teutonia Verein is one of the live organizations of the University. It is composed of students who desire to gain a working knowledge of the German language and to appreciate German life and customs. Students



who have had one year of German, or those who are able to speak German, are eligible to membership. Lively programs, conversation and games afford a pleasing opportunity for the student to gain a practical knowledge of the German language.

Under the efficient leadership of Professor and Mrs. Walsh, our first two years as an organization have been very successful. The progressive spirit of the Teutonians was expressed in staging the classic play, "Minna von Barnhelm," at the Grand Opera House on the evening of January 24, 1913. This was the first German play to be staged in the Pacific Northwest and its production reflected much credit upon the Teutonians.

The ideal toward which the Verein is striving includes original work, a large and enthusiastic membership, and, best of all, a pleasant club house in which they may assemble.

---

She who nips off the end of a brittle courtesy, as one breaks the tip of an icicle, to bestow upon those whom she ought cordially and kindly to recognize, proclaims the fact that she comes not merely of low blood, but of bad blood. Consciousness of unquestioned position makes people gracious in proper measure to all; but if a woman puts on airs with her real equals, she has something about herself or her family she is ashamed of or ought to be. — Oliver Wendell Holmes.



CHAPEL WALK

### LAUSANNE HALL CLUB.

This club includes all of the girls who live at Lausanne Hall. They meet regularly to discuss questions of interest to the girls in general. The Dean of Women or some lady of the Faculty frequently gives talks on hygiene, etiquette or some other practical subject. They also entertain in a most delightful manner and happy is the man who is bid to their parties.

### THE KLOSHE KLUB.

Textbooks, professors, laboratories, class rooms and "sech like" are all considered rather necessary adjuncts

to a college; at least they always have been somewhat closely associated with it. But after all these fade into insignificance when placed alongside of the college boarding club. Anyone who has ever frequented one of these resorts knows full well their tremendous importance. Three times a day the dining halls are the most attractive places on the campus. It is not often that a student cuts this "class." He appreciates too well what he gets out of it. He is not very often tardy, because promptness becomes a necessity if he would do the best work on this subject.

The Kloshe Klub is but two years old, but is very large and strong for its age. It has already made itself felt in University affairs. Its membership is limited to strictly college men, no preparatory students being admitted. The membership is also limited to thirty men.

The club is a strictly co-operative boarding club and is conducted along a solid business basis. It is incorporated under the laws of the state of Oregon. A student manager looks after the buying and selling and has general supervision over the management of the club.

The officers of the club are:

President.....	Errol C. Gilkey, '14
Vice-President....	Merwyn E. Paget, '15
Secretary.....	Maxwell E. Ball, '16
Treasurer.....	George Odgers, '16
Manager.....	J. Stanford Moore, '15

---

He has the will that can wait.



## THE EATON CLUB.

Willamette boasts of many clubs, and well may she do so, because of the quality and the kind of fellowship that they encourage, but there stands out pre-eminently one club whose attendance is most regular and whose members enjoy the most binding as well as jovial companionship. This club furnishes a board of solid victuals for more than a score of famished fellows every meal time. This food is furnished for about three dollars a week, which means a saving of at least three or four dollars a month.

During the year this organization, which began in 1909, was incorporated and put on a sound business basis. Each member bears an equal portion of the cost of the food, thus minimizing the boarding expense. The manager, who is elected in the spring, is bonded for \$200, and has jurisdiction over the purchase of fuel, food and other necessary articles. He also hires the cook, the waiters, the chore-boy and dishwashers; these workers with the exception of the cook are students who thus help pay their college expenses.

Mr. Francis, the manager, would be pleased to have your communication concerning membership in the club. Remember the quarters are not over

large and only about fifty can be accommodated, so get in early.

The officers are:

President.....	Hugh D. Price
Vice-President .....	Benjamin Neustel
Secretary.....	Hans G. Schroeder
Treasurer.....	Russell Betts
Manager.....	S. F. Francis

## BAND.

Two years ago, through the untiring efforts of Harry Irvine, the band was organized, which is at present composed of about sixteen pieces. This organization makes itself heard, if not felt, upon many occasions. What would a rally be without its stirring music? How can the exuberant college spirit be better expressed at a football game than by its triumphant notes? Or is anything more fitting to welcome home the victorious team than its exhilarating strains. Though very successful, like anything\* else there is possibility of improvement in quantity if not in quality. So if you are able to play on any kind of a band instrument you should consider it a pleasure as well as a duty to associate yourself with this college activity. The election of leader takes place at the beginning of the fall term of school, so join early and have some voice in the government. For information, see Harry Irvine, last year's leader, Lloyd Shisler, or Henry Richter.

---

It is only when we stop playing that we begin to grow old.

## MUSICAL ENTERPRISES.

---

The School of Music, which has for the last five years been under the direction of Frederic S. Mendenhall as Dean, and Myrtle Long-Mendenhall as Director of the Vocal Department, has attained a success hitherto unparalleled in the history of the school, both musically and otherwise. This is due to the efficient and comprehensive instruction to be found in all departments of the school, and to the broad-minded and businesslike administration of the Dean. In addition to this, the musical clubs form a most attractive feature of the school and are far reaching in their benefits upon the institution in general. The two most important musical organizations are the Glee Club and the Ladies' Club. The latter is composed of thirty members carefully selected at the beginning of each school year. The Glee Club is composed of sixteen men, and makes one or two more or less extended trips every year, appearing in concert. A great deal of other musical activity under Mr. Mendenhall's direction is evidenced each year.

### "THE CHIMES OF NORMANDY."

The year 1912-1913 witnessed the production of the opera, "Chimes of Normandy," with seventy people on the stage, fully costumed, and accompanied with full orchestra. This was the best operatic production ever given

in Salem by local talent, and was a great musical, dramatic, and artistic success.

"The Chimes of Normandy," a comic and romantic opera in three acts, music by Robert Plauquette, was given at the Salem Grand Opera House on Tuesday and Wednesday, April 15 and 16, 1913, under the direction of Frederic S. Mendenhall, Dean of the School of Music. Bruce McDaniel, of the Y. M. C. A., was the manager.

#### Characters of the Opera.

Serpolette, the Village Orphan.....

.....Myrtle Long Mendenhall

Germaine, the Lost Marchioness.....

.....Edith Rosslyn Collais

Village Maidens—

Gertrude.....Emma Loughridge

Jeanne.....Franc Newman

Manette.....Lois Ashby

Suzanne.....Ava McMahon

Henri, Marquis of Corneville.....

.....Guy Sargent

Grenicheux, a Fisherman.....

.....Alfred Schramm

Gaspard, a Miser.....Ralph Jones

The Bailli.....Charles Erskine

The Notary.....Roland Pfaff

The Registrar.....Carl Hollingworth

The Assessor.....Herman Clark

Peasants, Men Servants, Maid Servants, Coachmen, Sailors.

#### Synopsis of Scenes.

Act I—A Forest near the Village of Corneville. The Fair of Corneville.

Act II—A Hall in the Chauteau of Corneville.

Act III—A Forest or Park. Same as Act I.

## Act I.

1. (a) "All Who for Servants".....  
.....Opening Chorus
- (b) "They Say, They Say"
- (c) "Scandal Mongers".....  
.....Serpolette and Peasant Girls
2. "I May Be Princess".....  
.....Serpolette and Girls
3. "On Billow Rocking"....Grenicheux
4. "'Twas but an Impulse".....  
.....Germaine and Grenicheux
5. "Legend of the Bells".....  
.....Germaine and Chorus
6. "With Joy, My Heart".....Henri
7. "Such Conduct Is Quite Sad"....  
.....Ensemble

### The Fair Scene.

8. (a) "Come, Farmer Small".....  
.....Entire Chorus
- (b) "Than Us You'll Not Find  
Better"....Chorus of Men Servants
- (c) "Who Are Drivers Lack-  
ing?".....Chorus of Coachmen
- (d) "Who Are Wanting Maid-  
ens Able?".....Serpolette and  
      ens Able?".....  
.....Serpolette and Maid Servants
9. Finale, "Tell Me, Girl".....  
.....Entire Company

## Act II.

10. "Let Our Torches".....  
.....Henri, Germaine and Chorus
11. "I'll Shut My Eyes".....  
.....Serpolette, Grenicheux, the Bailli
12. "Silent Heroes"....Henri and Chorus
13. "What's She Saying?".....  
.....Serpolette and Chorus
14. "By His Side".....Germaine

15. (a) "As He's Looking Somewhat Pale".....Chorus of Sailors  
 (b) "Cold Sweat Is On My Brow"  
 Grenicheux, Serpolette, Germaine,  
 Henri and the Bailli.
16. (a) "Love, Honor, Happiness"....  
 .....Gaspard and Grenicheux  
 (b) "Yes, We Are Ghosts"  
 (c) "Ding Dong, Ding Dong"....  
 .....Entire Company

### Act III.

17. "There She Goes".....  
 .....Serpolette and Chorus
18. Introduced Solo .....Germaine
19. Finale — "Old Man, I Pardon  
 Thee".....Entire Company

— o o o —

### UNIVERSITY FESTIVITIES.

"For it's always fair weather,  
 When good fellows get together."

The first big gathering of the entire student body is at the Y. M. and Y. W. joint reception at the beginning of the school year. Be sure to come, Freshmen, and meet all of the old students. They'll be there to meet you, to greet each other, to smile bewitchingly at the professors, and to have the splendid good time that the Y. W. and Y. M. lassies and lads know how to give.

Long live George Washington! Not only did he give us our nation, but, more specifically speaking, he gave to the students of Willamette University a joyful holiday on the twenty-second of February. This is known



as Founders and Benefactors' Day and in the morning appropriate services are held in remembrance of the many good and loyal friends of our University. At noon one of those "indescribable" college feeds is served at the gym. Athletic awards and highly scientific interclass basketball games amuse the "children of his country" in the afternoon and in the evening the students don their Sunday best and close the day with a jolly good time.

Willamette students love to study, even some of the Seniors are said to be passively fond of the pastime. But after they have patiently, untiringly, unremittingly, and conscientiously ground away for four and a half months and after they have written a dozen, more or less, perfect examination papers, they want to exuberate and renew their youth. Therefore Willamette celebrates the close of the first semester with a unique "post-exam jubilee." A bonfire is made of all examination papers, parodys are written and sung on the joys of a studious life and all the students exert themselves to show their undying love for the examinations and the examiners.

The annual Freshman Glee is a distinctly Willamette institution. This Glee, originated by the Class of '12, is one of the most vibrant with class spirit of any occasion in the school year. The Freshmen have entire charge of the Glee, and this year they

fairly surpassed themselves and everyone else in the elaborateness of the decorations. Each class composes and renders a college song. Before the contest begins each class earnestly and persistently strives to raise the section of the chapel roof where it is sitting with songs and yells. After each class has rendered its spasm and the judges have retired there is a moment of "breathless silence"—imagine it! This year when the Sophomores won first place, thus receiving the beautiful Glee pennant, the very chapel swayed with the abundance of their joy.

"Are you sure it won't rain?" "Oh, yes, I'm quite sure!" And then you know that Willamette's great May Day is the subject of discussion. And when May Day does dawn fresh and clear it finds the Y. W. C. A. girls on the campus near Lausanne Hall ready to serve their famous waffles and maple syrup to all their friends, students and townspeople alike. The obliging University lads assist the girls "wash the cups and saucers," swing the waffle-irons, and flip the ham and eggs. After breakfast the "boys" work on the campus till the exciting tennis tournaments lure them to rest under the shade. At noon everybody gathers around the tables on the campus and enjoys the college dinner.

At about two o'clock the charming Queen of the May is crowned and

dainty maidens wind the May Pole. Miss Ada Mark was this year's queen. After this ceremony, everyone repairs to the athletic field to the track meet. After the track meet, the final round for supremacy between the Frosh and Sophs occurs. This is the annual tug-o'-war across the mill race. How the girls' hearts beat as they watch their heroes tug at that rope and, as one side gradually moves toward that cold blue stream, how the fears of one rise in direct algebraic ratio to the rising hopes of the other. This year the Freshies got the ducking and the "joy of the Sophs knoweth no bounds."

The Junior play closes the day, which is one of the red-letter days throughout the college course.

The Y. W. and Y. M. reception, given in honor of the Seniors, is always a jolly affair, touched with a little sadness on account of the near departure of our "betters."

The president's reception, given during commencement week, is one of the most brilliant and enjoyable functions of the college year. Willamette stands for the best type of social life. Take advantage of the high social opportunities offered you, meet your professors in a social way, be friends with everyone in the University, and you will find your time well spent.

---

A hundred men make an encampment, and one woman makes a home.

## ATHLETICS

Since Willamette believes in athletics as a part of college life, not as an accessory to it, the athletic interests are officially recognized by being under the direct supervision of the Student Body and an athletic council.

The council consists of the athletic director, one member from the faculty, two alumni, president of Student Body and two "W" men.

This council controls the athletic field and has advisory power in all matters of finance and intercollegiate relations.

Each branch of athletics, track, baseball, basketball, football, tennis, etc., is managed by a manager and his assistant; the latter succeeding the former in the following year. The manager and the assistant are elected by the athletic council in the spring of each year.

The associated Student Body ticket entitles the holder to membership in the Student Body, and admits him to all games on the home field. None but members of the Student Body are allowed to play on 'Varsity teams.

Willamette Field is one of the best athletic grounds of the Northwest. Under careful supervision for the last few years, it has been remodeled to meet all requirements. It contains a football field, two baseball diamonds, quarter-mile track, grandstand, bleach-

ers, and gymnasium, the latter being open to all students during term time.

The University "W," the highest honor in the gift of the Student Body, is awarded to men who have played a certain number of games on the 'Varsity team. Sweaters or sweater-coats with letters attached are presented to all men winning their letters.

### Football.

Active training and competition for places on the football team begin at the opening of the fall term. Suits may be obtained from the manager, Merwin E. Paget. All Freshmen are expected to come out. This year's football season was a most successful one. Although much new material had to be rounded into shape, the old men constituted a sufficient nucleus about which "Doc" built up a very strong team.

The results of the games last season were:

Willamette, 7	Alumni, 7
Willamette, 0	Oregon, 12
Willamette, 29	Chemawa, 0
Willamette, 40	Pacific, 0
Willamette, 71	Vancouver, 0
Willamette, 67	Whitworth, 0
Willamette, 30	Montana, 9
<hr/>	
Willamette, 244	Opponents, 28

The football game between the two lower classes is one of the popular



struggles of the season, the game being played some time in November. This year the score resulted in a tie.

### **Basketball.**

The basketball season for 1913 was rather short. The team was composed chiefly of new material and did not show up well at first. However, by the end of the season they had developed into a squad that could hold their own against all comers. The season was finished by playing O. A. C. a 14-16 game, which showed that the 'Varsity was still in Conference class. The entire squad will be back next year and with the new material a strong team is assured.

### **Baseball.**

Baseball work begins in the stadium some time in February. There all material is tried out and the best are selected for outdoor work on the field. Willamette holds a record for clean sportsmanlike baseball of which any college might be proud.

The schedule for this season was seriously broken into by the weather, the local games with O. A. C., Oregon, and others having been forestalled by rain. Besides the two above mentioned schools, the schedule included games with Chemawa, Penitentiary, and Multnomah Club.

### **Track.**

During the last few years Willamette has advanced steadily in her track



work. A track coach is provided and great interest is taken in the work by the whole student body. Do not hesitate to come out because you have never done any work of the kind; there is an equal chance for all.

Only one meet has been held so far this season and that was with Pacific University on May Day. It resulted in an easy victory for Willamette, the score being 79-43. The annual interclass meet was very close, the Class of 1915 winning by a few points over the Seniors.

### Tennis.

Tennis is coming to take a more prominent part in college life. It is under the control of the Student Body, and the courts are for the use of every student of the Association. Willamette has produced many brilliant teams in the past and faithful effort will accomplish the same in the future. An interclass tournament is held every spring and every man who is interested is invited to enter.

The "W" Club is an organization composed of the students of Willamette University who won their official letters in one of the branches of athletics. The members of this club are:

### Football.

Blackwell, R. Homan, Bellinger, Westley, McRae, Francis, Bolt, P. Ho-

man, Erskine, Rowland, Stearns, Watson, Day.

### **Basketball.**

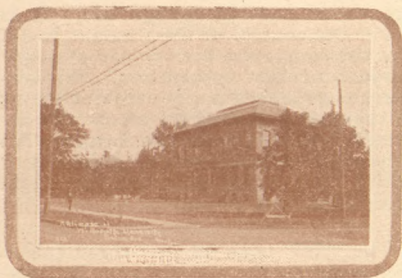
P. Homan, Hepp, Pfaff, Tallman, Young.

### **Baseball.**

P. Homan, McRae, Steelhammer, Westley, Drake, Gates, Ross, Erskine.

### **Track.**

Blackwell, Mills, McInturff, Francis.



Don't Go Down  
by the  
Old Mill Stream

---

Go Down Buy  
Something  
From  
Our Advertisers

# STUDENTS

Have Their Clothes Made At



## WHY?

Because they are sure to find up-to-date Woolens, Style, Fit and Workmanship. Full dress suits a specialty.

## A COLLEGE CHUM

Mr. Mosher is a product of Willamette U. and is now one of Salem's leading business men. He conducts the largest and best equipped men's and ladies' tailor shop in the city. This shop is especially fitted for Willamette students.

See His Representative at the University

## MISCELLANEOUS.

### POINTS OF INTEREST.

Because of the fact that Salem is the Capital City of Oregon, it has many places of special interest to students. Among these are the various state institutions, including the Capitol Building, the Schools for the Blind and for the Deaf Mutes, the Indian School at Chemawa, the Industrial Schools, and the Asylum and Penitentiary. All of these can be visited with profit to the student.

Then there is the Lee Mission Cemetery, where the early pioneers and missionaries are buried. This is located on Center street, and can be reached by taking the "C" car. There, under a grassy mound, surmounted by moss-grown stones, the founder of Willamette sleeps. Consult Dr. Lisle, the librarian, for further information concerning Jason Lee, and Willamette traditions.

One of the favorite picnic grounds of Willamette students is located at Eola. In the early days this site and the site of the present city of Salem were rivals for the position of Capital City of Oregon. In this struggle for honors Salem won out by the barest majority. This fact, added to the real beauty of the place, makes it a popular goal for launch parties and picnics and walks.

Willamette first president was the Rev. Francis S. Hoyt, LL. D.



Prints Everything That Students Need  
Printed

221 S. Commercial Street      Salem, Oregon  
Phone Main 1243

---

BOATS FOR HIRE      LAUNCH SUPPLIES  
Phone 849

## *Salem Boat Factory*

CHAS. K. DENNISON, Prop.

¶Special attention given to student parties.

¶Designer and Builder of Launches and Rowboats. Agent for Ferro Marine Engines.

Foot of State Street - - - Salem, Oregon



## THE SALEM YOUNG MEN'S CHRISTIAN ASSOCIATION

---

The city Y. M. C. A. supplements the college Y. M. C. A., both organizations co-operating in every way possible. The Association is "A home for young men away from home," supplying him with papers, baths, and above all, congenial companions under wholesome social environment.

Every student should indulge in gymnastics for his own good. The Association recognizes the following principles in conducting a special gymnasium class for students:

1. A form of supplementary training for the development of bodily vigor.

2. A great educational force developing the co-ordination of the muscular and nervous systems and contributing quick motor reactions, muscular skill and precision.

3. An excellent means of teaching social ethics, of establishing right social relationships and social co-operation, and of satisfying the play instinct.

4. A means for the development of character, through self-control, temperate living and fair play.

Other phases of the Physical Department have proven quite popular with the students. The swimming pool entices like the old swimming hole. The boxing and wrestling club is composed mostly of students. The gymnasium is open for free work

# *Official College Paper*

¶Published weekly during the school year by the students.

## Willamette Collegian



Complete files can be had by arrangement with the manager.

By Mail, \$1.50

Address :

MANAGER COLLEGIAN, W. U.

when no class is in session. Basketball, handball, indoor baseball and biff are among the popular games.

Special rates have been arranged for those attending school. Also the Willamette Y. M. C. A. membership is accepted for its face value.

---

SONGS AND YELLS.

---

HERE'S TO THE GOLD AND CARDINAL.

(Winner of the Glee Contest, 1913.)

Words by Kate Barton, '15.

Music by Bruce McDaniel, '15.

In the westland stands a college  
That in the by-gone years  
Near a river's course was founded  
By the sturdy pioneers,  
Whose visions for the future  
Of their beloved land  
Led them through trials and hardships  
With a firm and steady hand.

Chorus—

So here's to thy Gold and Cardinal,  
And here's to thine ancient lore,  
And here's to the hearts that beat for  
thee,  
Loyal forevermore!

Now the same old dauntless spirit  
Still burns in every breast,  
Urging on to new achievements,  
Calling us to do our best;  
And so within her portals,  
While hearts are light and free,  
Let's fill our cups o'erflowing  
For our dear old 'Varsity.

Exclusive Agents For

HANAN SHOES

—and—

THE ROYAL TAILORS

Clothing Sold at Cost

The Small Profit and Quick Sale Store

---

For the Best in

*Cutlery*

SEE

*Salem Hardware  
Company, Inc.*

120 North Commercial Street

Phone 172

SALEM, OREGON

---

*The Frame Shop*

279 Commercial Street - - - Salem, Oregon

Pictures, Frames and Art Goods

“College Posters”

In the golden future gleaming,  
The mystic hand we see  
Of success, bright and alluring,  
Beck'ning to our 'Varsity;  
We vow we'll heed her message  
With hearts inspired anew,  
And win the offered laurels  
For our old Willamette U.

---

## WILLAMETTE! GRAND OLD U.!

Words by J. R. Bain, 16.

Music by Lucile Kuntz, 16.

On the margin of the river  
Touched with parting rays of gold,  
Where the dying sunbeams quiver  
In the sky and on the wold;  
Where the morning sun, with gildings,  
On the towers in glory falls,  
Stands Willamette's stately buildings,  
Oregon's oldest halls.

### Chorus—

Oh, come and let us loudly sing!  
Sing Old Willamette's praise!  
The mem'ries dear that 'round us  
cling,  
The joys of college days!  
The days of toil, the nights of fun,  
Our athletes tried and true,  
Sing all her glories, one by one—  
Willamette! Grand old U.!

Born in faith and reared in striving  
In the dim days of the past,  
By that strong faith surviving  
Shall our Willamette last.  
High ideals and grand traditions  
Of this magic western clime

# STUDENTS SAVE

AT LEAST

## \$10.00

on your suit and have it made to order.

SCOTCH WOOLEN MILLS garments wear just right, feel just right, fit just right. They are made to fit YOU in the style that suits you.

None Less Than

## \$15

None More Than \$20

Over 300 Patterns to Choose From

359 State Street - - - Salem, Ore.  
60



Have marked thy slow transitions  
From the Past to Present time.  
But while thy past is glorious,  
Shaped by men and women true,  
May thy future be victorious,  
Alma Mater! W. U.  
May thy heroes' olden story  
Ever thrill us thru and thru,  
Make us heroes for thy glory,  
Dear old Willamette U.!

---

## TO WILLAMETTE UNIVERSITY.

By Jessie Young.  
Music by Ray Smith.

### I.

In the sunniest Oregon valley,  
Where dwell men long-famed for  
their zest,  
Stands Willamette U., the dear old  
school,  
The "Queen of all the Golden West."  
Her towers pierce the heavens high  
While rivals her beauty enhance,  
And her Cardinal and Gold float to  
the sky,  
Upheld by loyalty's lance.

### Chorus—

For our dear old Wilammette U.,  
The 'Varsity loved so well,  
The College leading all others,  
As our conquests nobly tell,  
We shall live and die for W. U.,  
And do it with a will,  
So here's to the best in all the West,  
The greatest College still.

# SALEM STEAM LAUNDRY

Your Laundry

ESTABLISHED 1889

136 S. Liberty Street

"The Laundry That Knows How"

This is Salem's best equipped and  
most satisfactory laundry

Superior Work

Lowest Prices

---

## Conger Printing Co.

College and Church Programs

Professional Cards

Announcements and Invitations

at Reasonable Prices

Room 910 Murphy Block

Phone 353

SALEM, OREGON

---

## The Spa

The Popular Sweet Shop

For

Willamette Students

---

## Thielsen Cash Grocery

¶ Everything for the table.

¶ Special attention to club orders.

On High Street

Opposite Courthouse

SALEM, OREGON

## II.

We traverse again those ancient halls,  
Eagerly trace out hard learning's  
ways,

Note the carved lines on seats and  
walls,

Soft in the waning light of day;  
Her pedestals by Time brushed past  
Are but endeared by pangs of woe,  
While smiles of memory illumine at last  
Students' faces yearning to know.

## III.

Once more we see the baseball team  
And our lips frame a rah! rah! rah!  
Our football men with warlike mien  
Tread before us o'erwhelmed in awe.  
Our praises shall ascend on high  
While our heroes fight and win re-  
nown,

And naught we know can e'er restore  
The debt to them we owe.

---

### TO WILLAMETTE.

By Perry Reigleman.

Music by Mendenhall.

There's an old historic temple  
Rising grandly through the years,  
Where the oaken hearted fathers  
Drew their strength for strong  
careers;

Down the years its portal open,  
Gathered wise ones to its fold,  
Breathed the spirit of the Westland,  
Cardinal embled 'bossed with Gold.

Dear Old School! How strong we love  
thee!

Round thy mem'ries how we cling!  
Gladsome hearts beneath thy shadow,

# Willamette University College of Law

ESTABLISHED 1848

A Two Years' Course in the  
Fundamentals of Law, ter-  
minating in the Degree  
of Bachelor of Laws

## CURRICULUM

### JUNIOR YEAR

Common Law — Criminal Law — Real  
Property—Personal Property  
Contracts

### SENIOR YEAR

Common Law Pleadings — Evidence  
Code Pleadings—Corporation Law  
Code Negotiable Instruments  
Equity—Torts—Consti-  
tutional Law-Prac-  
tice Work

One of the most beneficial features of the school work is that of the moot court, which affords the students actual practice in the rules of evidence and general courts and trial procedure. The state law library is located across the street from the University.

For additional information address

**ERNST BLUE, REGISTRAR**

15 Bush Bank Bldg. Salem, Oregon

Loyal hearts to thee we bring.  
Old Willamette! How we cherish  
All thy legends and thy lore;  
Born upon the calm Pacific,  
Guides onward evermore.

Spirit of the Golden Westland,  
Breathing through the fathers' tears.  
Tells the story of the temple,  
Bids us hope adown the years.  
Sing, oh sing of Old Willamette,  
Sing while hearts are young and  
true,  
Sea to sea the chorus swelling,  
Dear old School, our W. U.

---

1—2—3—4

What are we here for?

Just to cheer for

W-I-LL-A-M-E-T

W-I-LL-A-M-E-T

Willamette!

---

Rah! Rah! Rah! Rah! W. U.—W. U.!  
Rah! Rah! Rah! Rah! W. U.—W. U.!  
Rah! Rah! Rah! Rah! W. U.—W. U.!  
Rah! Rah! Rah! Rah! W. U.—W. U.!

Willamette!

---

S-s-s-s-s-s-s-s-s-s-s-s-s-s-s-s-s-s

Boom!!!!

Ah-h-h-h!

Cuckoo-oo!

Willamette!!

---

Holly Gee  
Looke See  
Methodist Man  
Heap Savee!

---known by  
the *excellence*  
of our product

Printers and Engravers

SNYDER PRINTING CO.

DEARBORN BUILDING

Near Corner State and Commercial Streets

---

# Willamette Boat Livery

Foot Trade Street

¶ Rowboats for hire by the hour or day.

¶ Special attention given to Student and Club Parties.

¶ The launch "ROSE" is a special favorite among all College students.

FOLKES & ROSENBAUM  
Proprietors



Wahoo! Wahoo!  
Rip! Zip! Bazoo!  
I yell! I yell for W. U.!  
Wahoo! Wahoo! Wahoo!

---

W. U. Rah! Rah!  
W. U. Rah! Rah!  
Who Rah! Who Rah!  
W. U. Rah! Rah!  
W. U. Rah! Rah!  
W. U. Rah! Rah!  
Who Rah! Who Rah!  
W. U. Rah! Rah!  
Willamette!

---

The cannibal king with a big nose  
ring

Got stuck on a Zulu maid,  
And every night, when the moon  
shone bright

Across the canal he'd wade,  
To hug and kiss that dusky miss  
Right under a big bay tree,  
And when they met they sang a duet  
That sounded like this to me:

Hip, heck tra boom!  
Qui bisum yah zoom!  
Hulla Baloo, baloo balee!  
Old Willamette 'Varsity.

---

## GENERAL INFORMATION.

---

### CHURCH DIRECTORY.

First Methodist—State and Church.  
Leslie Methodist—South Commercial  
and Myers.  
Jason Lee Methodist—1020 Jefferson  
Avenue.

## GAME SCORES.

### Football Records.

Willamette	Date	Opponents

### Basketball Records.

Willamette	Date	Opponents

German Methodist—Center and 13th.  
Swedish Methodist—Fifteenth and Mill.

Free Methodist—South Winter.

West Salem Methodist—West Salem.

First Presbyterian—Church and Chemeketa.

First Baptist—Liberty and Marion.

First German Baptist—Cottage and D.

First Christian—High and Center.

Central Congregational—Nineteenth and Ferry.

First Congregational—Liberty and Center.

St. Paul's Episcopal—Church and Chemeketa.

Evangelical Church—Chemeketa and Seventeenth.

German Evangelical—Liberty and Center.

United Evangelical—Cottage and Center.

Friends (Quaker)—Elm and Highland Avenue.

German Reformed—Capitol and Marion.

Christ's Evangelical Lutheran—East State.

St. John's Evangelical Lutheran—Sixteenth and A.

United Brethren—Mission and University.

United Brethren Mission—Seventeenth and Nebraska.

Unity Unitarian—Cottage and Chemeketa.

Seventh Day Adventist—Mill and Cottage.

## Baseball Records.

Willamette	Date	Opponents

## Track Records.

Willamette	Date	Opponents

I have failings in common with every human being, besides my own peculiar faults.—Burke.

First Church of Christian Science—  
440 Chemeketa.

Church of God—Sixth and Hood.

Saints' Church—1776 Fair Grounds  
Road.

St. Joseph's Catholic — Cottage and  
Chemeketa.

---

## TROLLEY LINES.

Cars leave Junction corner at State  
and Commercial at 6 a. m. Sundays  
at 8. a. m.

Center Street Line—Car leaves at  
7 a. m., State and Front. Sundays at  
8 a. m.

Commercial Street Line—Cars go-  
ing south leave on the hour and every  
fifteen minutes thereafter. Cars go-  
ing north leave five minutes after the  
hour and every fifteen minutes there-  
after. Last car leaves junction at  
11:45. Last car reaches junction at  
12 o'clock midnight.

State Street Line, Chemeketa Street  
Line and Yew Park Line—Cars leave  
on the hour and every twelve minutes  
thereafter. Last car leaves junction  
at 11:34. Last car reaches junction  
at 11:58. Cars leave end of line and  
junction at same time.

Center Street Line.—Leaves Front  
and State on the hour and every twen-  
ty minutes afterwards. Last car at  
9 p. m.

17th Street Line—Runs between  
Center Street and Fair Grounds. Meets  
Chemeketa line going from junction.  
Car every 12 minutes.

## RECORD YOUR CUTS.

---

### First Semester.

Subject

Date

1.

2.

3.

4.

5.

6.

### Second Semester.

1.

2.

3.

4.

5.

6.



## POST OFFICE.

General Delivery opens at 7:30 a. m.; closes at 6. p. m. Closed on Sunday.

---

## LIBRARIES.

**Carnegie**—Week days, 10 a. m. to 9 a. m. Sundays, for reading only, 2 to 5 p. m.

**State Library Commission**—Opens 8:30 a. m.; closes 5 p. m.

**State Library**—Opens 8 a. m.; closes 9 p. m.

---

Read not books alone, but men, and among them chiefly thyself; if thou find anything questionable there, use the commentary of a severe friend, rather than the gloss of a sweet-lipped flatterer; there is more profit in a distasteful truth than in deceitful sweetness.

---

# RECITATIONS—FIRST SEMESTER.

	8	9	Chapel	10:15	11:15	1:30	2:30
Monday			10				
Tuesday			10				
Wednesday			10				
Thursday			10				
Friday			10				

Just Drop In At The  
**'VARSITY BOOK  
STORE**

—FOR—  
STUDENT SUPPLIES

STATIONERY  
NOTE BOOKS  
PENS AND PENCILS  
OFFICIAL PENNANTS  
OFFICIAL ROOTER HATS  
STUDENT NOVELTIES

Also a Complete Line of  
LOCAL POST CARD VIEWS

GLEN J. McCADDAM, Mgr.

---

**City Y. M. C. A.**

Enlarged and Ready for W. U.  
Students

SPECIAL STUDENT CLASSES

GYMNASIUM  
SWIMMING POOL  
SHOWER BATHS  
BASKETBALL LEAGUE  
INDOOR BASEBALL LEAGUE  
ETC., ETC.

Student Membership \$7.50 for school  
year. \$1.00 credit for W. U. ticket.

# RECITATIONS—SECOND SEMESTER.

	8	9	Chapel	10:15	11:15	1:30	2:30
Monday .....	.....	.....	10.....	.....	.....	.....	.....
Tuesday .....	.....	.....	10.....	.....	.....	.....	.....
Wednesday .....	.....	.....	10.....	.....	.....	.....	.....
Thursday .....	.....	.....	10.....	.....	.....	.....	.....
Friday .....	.....	.....	10.....	.....	.....	.....	.....

# *The Clothing Store For the Student*

---

## **BISHOP'S READY-TAILORED CLOTHES**

are the classy kind for the young men  
who wants good clothes

**\$15.00 to \$30.00**

---

## **BISHOP'S MADE-TO-MEASURE SUITS**

have the stamp of quality and refinement found only in the highest class tailor shop. Reasonable prices.

**\$20.00 to \$40.00**

**Shoes, Hats, Furnishings for Young  
Men**

**CHAUNCEY BISHOP, Manager**

## PERSONAL ACCOUNTS.

--	--	--	--



## MEMORANDA

---

## PERSONAL ACCOUNTS

--	--	--	--

## MEMORANDA

---

STYLE                  SNAP  
                            FIT

*L.R.M. Pierce*  
TAILOR                  SALEM.

“Let Pierce Suit You”

Masonic Temple

SUITS AND OVERCOATS

**\$20.00 AND UP**

---

*Huller*

*Printing*

*Concern*

University Boys That Know Univer-  
sity Printing

Phone Main 2179

251 State Street

GLEN J. McCADDAM,  
Student Representative

## ADDRESSES.

Name Ruby Hopf

Address 706 Riverside  
Drive

Name New York

Address Apt. 1 B.

Name Mrs. M. J. Wilson

Address 437 Kipling St

Name Palo Alto Cal

Address Ella B. Mc Dowel

Name \_\_\_\_\_

Address San Jose - Cal

Name Mrs. Ernest Wilson

Address \_\_\_\_\_

Name Palo Alto

Address \_\_\_\_\_

---

*Tom Cronise*  
PHOTOGRAPHER

Popular Tones      Latest Styles  
Corner Court and Commercial Streets  
Over Chicago Store  
Phone 382  
84



## ADDRESSES

Name *Miss J. Minton*

Address .....

Name *Mrs. Baker.*

Address *Hadden Hall Apts*

Name .....

Address .....

Name .....

Address .....

Name .....

Address .....

Name .....

Address .....

Name .....

Address .....

---

## **WILLAMETTE ART SCHOOL**

Thorough instruction in all branches of art work. Special class in watercolor, oil and china painting. Portrait work. The studio is well equipped and ready to handle a great many students. For further information, address

**MISS MARGARET GILL, DEAN,  
College of Arts, W. U.**

## ADDRESSES

Name .....

Address .....

Name .....

Address .....

Name .....

Address .....

Name .....

Address .....

Name .....

Address .....

Name .....

Address .....

Name .....

Address .....

## MEMORANDA

---

---

### GERMAN BAKERY

12th and Chemeketa Streets

### WHITE SWAN BAKERY

361 North Commercial Street

¶A Dairy Lunch has been opened in connection with the White Swan.

Prompt Deliveries

Phone 903 or 961

---

**PATTON BROS.**  
**SALEM'S BEST BOOK STORE.**

## PERSONAL ACCOUNTS

---



MEMORANDA

---

---

*Bullock's Studio*

"The College Photographer"  
Official Photographer

for

"The Wallulah"

4th Floor Hubbard Building

## PERSONAL ACCOUNTS

---

---

# *Hob Nob*

ART NEEDLE SHOP

Everything in fancy line for the college student

213 Hubbard Building

## MEMORANDA

---

---

C. C. Foreman

O. F. Franklin

# *Standard Cleaners and Dyers*

Phone 2433

342 North Commercial Street

Salem, Oregon

## MEMORANDA

---

---

Visit

**JACK FROST**

For All Kinds of Confectionery and  
School Supplies

Corner of Campus on Twelfth Street

**SALEM, OREGON**

## MEMORANDA

---

---

If You Buy It At  
**CLARK'S CONFECTIONERY**  
It Is the Best

Home Made Candies and Ice Cream  
On 12th Street                      Opposite Campus



Residence :  
419 Summer Street  
Phone Main 614

Office : 404-405  
U. S. Nat. Bank Bldg.  
Phone Main 919

## DR. W. L. MERCER

Graduate  
American School of Osteopathy  
Kirksville, Mo. SALEM, ORE.

---

Office Phone 307

Residence Phone 313

## DR. G. V. ELLIS

410-411 U. S. Bank Bldg. SALEM, ORE.

---

First Floor U. S. National Bank Building

## DR. J. C. GRIFFITH

Phone 144

Salem, Oregon

---

## DR. F. L. UTTER

DENTIST

## DR. F. H. THOMPSON

Suite 415-416-417  
Masonic Building

---

## DR. JAMES SMITH

OPTICIAN

Suite 303 Masonic Building

SALEM, ORE.

---

Office Rooms :  
202 U. S. Bank Bldg.

Sunday and Evenings  
by Appointment

## DR. B. FRANKLIN POUND

DENTIST

Office Phone Main 2106  
Res. Phone Main 2040

SALEM, OREGON

## MEMORANDA

---

---

**A. B. POOLE, O. N. U. Phg.**

Will supply your needs and wants in  
the Drug Line

115 North Liberty Street   -   -   Salem, Oregon

## MEMORANDA

---

## MEMORANDA

---

## MEMORANDA

---

## MEMORANDA

---



## MEMORANDA

---

## MEMORANDA

---

## MEMORANDA

---

## MEMORANDA

---

## MEMORANDA

---

## MEMORANDA

---

old -

## MEMORANDA

---

gas  
electric  
telephone



may

MEMORANDA

---

raddishes - .05  
stockings - .30  
M-fare 2.00  
telephone -  
electric -  
gas -  
groceries -  
meat -  
mrs W.

## MEMORANDA

---

## MEMORANDA

---

