

# Collegian

WILLAMETTE UNIVERSITY'S STUDENT NEWSPAPER

VOLUME 100, NO. 22 · MARCH 2, 1990

## Trustees Approve UC Food Service Proposal



by Duessa Easton

Centralized dining will be a reality in Willamette's near future, as the Board of Trustees unanimously gave the go-ahead on a proposal submitted by the food service committee at their meeting last Saturday. After a year-long process to decide the best option for improving Willamette's food service, the committee recommended a plan to renovate the Putnam University Center and build a central campus dining facility inside.

The Trustees approved the general concept, making

way for a committee to make concrete plans and find funding for what may be a \$4.5 million project. This would involve expanding the UC on three sides and adding 8,000 square feet on both floors, and changing the existing UC into a student center.

The dining facility would feature many different serving areas concentrating on different types of food, including hot meals, a grill, a salad bar, sandwiches, "theme foods," and an expanded Nutrition Awareness Program, according to committee chair Henry Hewitt, a member of the

Board of Trustees.

"This option was the one most likely to ensure improved food quality on the Willamette campus," said Hewitt. The committee also considered renovating the existing dining facilities. "It's a concept that takes the centralized dining facility and facilitates it into a student union." Although officials are unsure when the project will be completed, they say that Willamette freshmen may see the results.

Hewitt described his vision of the facility as one with "a dramatic open feeling, a place inviting and open to a larger constituency." Plans for the building will allow seating of approximately 600 at one time, with a serving capacity of 1200 each meal. It would probably be open longer during meals than the residence hall dining areas are, and may be open between meals for lighter fare.

A central concern of the committee was consideration of the importance of the community feeling found in residence hall dining. "The most important issue is the small group identity," said student member Chris Pepin. "We'll achieve this through sound barriers and plants. It's not going to be a large, cold and sterile dining facility like you'd picture in the army. It will be well done."

"I think at Willamette small groups are often emphasized at the expense of a larger community feeling," he continued, saying that although fraternities may be concerned that they won't have a private dining room, any house which requires meal times together to keep it alive was unhealthy in the first place. The sorority houses will have the option of keeping their current meal systems or joining with the centralized facility.

The plans include separate meeting rooms that could be reserved by small groups for special occasions. According to Hewitt, groups could occasionally be served in their residence halls in connection with any special program they may have. They also plan to serve a continental breakfast in or near the residence hall so students who want a light meal won't have to go to the central facility in the morning.

Another advantage cited by the committee is that individuals will pay with a declining balance card for each meal. "This lets them buy more directly in relation to what they eat," said Hewitt. Students would purchase a card at the beginning of the semester and use the balance to pay for food

- continued on page 4

### Inside:

- Readers' response.....page 2
- More of the same.....page 3
- Special Section:
- Board of Trustees meeting....pages 4-5
- Belknap facelift.....page 6
- To Reno they go.....page 7
- Spring sports.....page 8

## Research Grant Applications Available

by John Rehm

Applications for Willamette University Undergraduate Research Grants for students to participate in research and professional activities during the summer of 1990 or the 1990-91 academic year are now available in the Deans Office, College of Liberal Arts. The grants, for up to 2000 dollars, may be used for collaborative work with Willamette faculty, similar scholars elsewhere or more independent projects.

"The grants have a number of objectives," according to Dean Julie Ann Carson who helped initiate the program last year. "We want to provide our students with a

more intensified undergraduate experience by working closely with a faculty member and to help them prepare for graduate studies. Just as important, though, is the opportunity to explore issues and ideas outside of the classroom."

Fourteen grants were awarded last year for students in departments ranging from music to biology. In pursuing their projects students traveled to locations such as Jordan, Ecuador and the Aspen School of Music while others used the money for time in Willamette's library and science labs.

Junior Greg Mulhauser, who wrote a paper on "The Tao of Determinism," said

that the grant gave him time to set aside from his busy schedule to investigate some philosophical questions that couldn't be fully addressed in class. Professor Russ Beaton described the program "as one of the most valuable things to come along in years. I worked with Pat Charlton on an energy project, and from my point of view, I could not possible have gotten as far as I did without him. From his point of view, he billed it as both the most interesting thing he's done in an academic sense as well as the best "summer job" he's ever had.

Carson said that strength and

- continued on page 6

# FORUM

## Commons Great, but More Student Input Needed

"Come and get it." That's what on-campus diners will have to do when the U.C. is converted into a student center and dining commons. But the benefits seem to

make student schedules more flexible. The food will be an improvement over the taxicab cuisine that is currently shuttled out to our umpteen dining rooms. Diners will have the best of both social worlds, eating with old friends and meeting new ones. Lastly, our food money will be spent more efficiently.

The problem is, student involvement in the decision process was not as strong as it could have been.

That's not an objection to the process itself, or to those who participated. The Food Service Committee considered its options carefully, and the student members served their constituency well. It's just that student awareness and input outside the committee or the two food forums was low.

Fortunately, the plans aren't set in stone. There is still the chance to get involved in the committees that will resolve the details.

Even if you don't have the time to serve on a committee, you do have the time to stay informed. Talk to people that join the committees, and ask questions. Express your opinion. If you will be gone before the commons are a reality, it might seem that the final outcome needn't be your concern. Maybe so, but today's students are the only ones who can provide a student perspective.

Most of us at the *Collegian* won't be here to eat at the "UC-dome," but we want to see it serve future students well. We hope that student awareness and input can help make that a reality.

### VANTAGEPoint

outweigh the costs, and we believe that the transformed facility, approved by the Board of Trustees Feb. 24, will improve the overall campus eating experience.

It could be a very attractive center of student activity. Expanded hours will

## Complaining Won't Solve Problems

In reading the *Collegian* lately and listening to the gripes and complaints of WU students, in as well as out of Senate, I've come to a conclusion about the actions of most (not all) WU students: they love to bitch, but will

Marriott employee, and no, I'm not brainwashed) that are riddled with complaints but rarely offer constructive comments as to what to do to improve food quality. Lots of students also like to gripe about the checking

of cards and the one entree at a time, but turn around and steal silverware, dishes, bagels and cereal. In other words, the students want more, but are unwilling to do what it takes to have it. Let us also remember the food service forum and the committee that has been meeting for a year in which it has addressed the

concerns for improvement. Student turnout? Well, very little.

The issue of ASWU accountability is a very important one. Ms. Nutt's article (*Collegian*, Feb. 16, 1990) said that "accountability is not ASWU's strong suit." Yet, she only mentions accountability regarding money matters. And furthermore, all of her complaining revolves around money earmarked for activities out of the Vice President's office. Therefore, we can conclude that Ms. Nutt is putting ASWU on the firing line when she's really miffed at Mr. Gilbert, who was defended last week. In reality, ASWU Senate has been very effective and has been very accountable. Just recently Treasurer Figueroa released his January-February report saying exactly where the money has gone. Plus, every time Senate approves money allocations, it goes into the minutes. So, Ms. Nutt could simply read the

minutes and see exactly where the money goes. The moral? The info. is there if you want to spend a little energy looking through the *Collegian*, the Senate minutes, or calling any senator or ASWU officer. They are more than happy to be of service to you. Don't just bitch, but do something about it.

Next, the turnout at ASWU functions is pitiful. The movies and the KWU-ASWU dance are perfect examples. ASWU also had to extend the Assassin game because of a lack of participants. Why? Because few people gave a rip about it. And it certainly wasn't for a lack of advertising. Once again, what's the moral? ASWU is accountable for the money, yes, BUT, ASWU gets its ideas on its own and if it received input from WU students, then the activities would reflect those views, and could therefore be more accountable. In other words, if you don't give input, then don't bitch. But I also realize that you will say, if I don't like it, then why should I go to it? The answer here is simple, if you didn't attempt to go or already have a preconceived perception of ASWU activities, then the fault lies not with the activity, but yourself. The bottom line is this: Willamette government and the activities it holds are directly made up of student input. The more input received, the more representative it is. Willamette is what you make it. Sounds a bit corny I realize, but it is so very true. If you're going to bitch, then act on it!

by John Hellen

### GUEST Opinion

not take action. What foundation do I have for saying this? Well, I offer the following: safety concerns, food service concerns, ASWU accountability concerns, and the lack of student turnout to most ASWU events.

Let's begin with the safety issue. As of late, there has been a rash of thefts on campus including Matthews and Delt residents' cars, Belknap, Baxter and Doney rooms, as well as computer thefts. This isn't new news to most people. But, what's the point? Well, Senate took on the responsibility and the initiative to create a safety committee to investigate these issues. This committee's meeting times have been advertised in the *Collegian*, box-stuffers, Senate minutes and the reader board. I sit on this committee and the only two non-senator students were both *Collegian* reporters. It is frustrating to know this campus is ticked and will not relate to its representatives what has happened, or give ideas as to how to prevent these thefts. Director of Campus Safety Ross Stout (now stop that name-calling!) has said that most of the thefts at the TIU lot were not reported. From the information I gathered, there were 13 Matthews residents victimized, yet Campus Safety received only six reports. How can Campus Safety effectively protect if they don't know a problem exists? The moral? Report the crimes! ALL OF THEM! Don't just bitch about it, do something! Report and show up at the committee meetings. In other words, the campus needs to become a community that is aware. Vice President of Student Affairs Frank Meyer agrees that WU needs to become cohesive and band together to look out for one another as well as become conscious of the fact that people do steal.

As far as food service goes, it is frustrating to get comment cards (I'm a

## Letters

### Gilbert Not At Fault

To the Editors:

I am writing in response to Stephanie Nutt's guest opinion in the Feb. 16 issue of the *Collegian*. Ms. Nutt spends a great deal of time criticizing ASWU Vice President Jeff Gilbert, but all the while, never makes a very credible argument. This can be attributed to the fact that most of her assertions were simply that and nothing more. I would suggest that in the future, Ms. Nutt, you curb your slanderous language unless you know what the hell you're talking about! I say this in all fairness because I do know the story and it sure doesn't sound like what I read last week.

In this letter, I will attempt to set the record straight (or at least correct the warped version that Ms. Nutt provided). Ms. Nutt began her personal diatribe by referring to Gilbert's letter that came out at the end of the semester. In all of her insinuations, she never once mentioned the reason behind why Gilbert had mailed the letter. She was only concerned with making sharp and biting comments. The truth is simply that Gilbert personally copied and stuffed some 1500 letters by himself. He did this because he felt compelled to assure us that although ASWU was encountering difficulties that he was still going to do the best job that he could

- continued on page 3

## Collegian

900 State St. Salem, OR 97301 503/370-6053

The Willamette *Collegian* is the official publication of the Associated Students of Willamette University, published weekly except during holidays and exam weeks. The contents of this publication are the opinions and responsibility of the *Collegian* and do not necessarily reflect the opinion of Willamette University or the Associated Students of Willamette University.

The *Collegian* encourages responses from its readers in the form of Letters to the Editor(s). Letters to the Editor(s) should be submitted typewritten, dated, and signed, as well as bearing the name and address of the sender. They are subject to editing and/or denial of publication at the editorial board's discretion. They must be submitted to the *Collegian* by Monday prior to publication.

### Editors-in-Chief

Pam Stucky/Co-Editor  
Mike Brucker/Co-Editor

### Editorial

Curt Kipp/Managing Editor  
Tom Willett/Business Manager

### Art/Production

Gretchen Anders/Circulation Mgr.  
Noel Snodgrass/Darkroom Manager

### Core Writers

Suzanne Budd, Duessa Easton, Mark Gerson, Kevin Grossman, Kevin Ray, Missy Swenson

### Contributors

Seena Cassim, John Hellen, Chris Mehelis, Stephanie Nutt, John Rehm, Steve Vanderheiden

## NEWS BRIEFS

### Club Willamette Begins

Club Willamette kicks off its first season with its first dance of the year Friday from 9-1 at Kaneko Hall. Club Willamette is a plan for a rotating dance club on nights when there are not activities being held on campus. All Willamette students will be invited to the dances, as there is no guest list; however, they are required to bring their student I.D.s. Questions about Club Willamette can be directed to Dave Ames.

### An Afternoon of Dance

Will U Dance, the University dance troupe, is presenting "An Afternoon of Dance," Sunday, March 4, at 3 p.m. in Smith. The program will also feature dancers from Chemeketa Community College and the North Santiam Academy of Ballet. Admission will be \$1 for Willamette Students.

### Come to Papua Convo

Life as a Peace Corps worker will be the topic of the next convocation, "Honeymoon in Papua New Guinea." Robin Craggs, the Resident Director of TIUA, and her husband Garret Keith, the interim part time director of International Student Affairs, will be speaking on their life in Papua New Guinea.

### Guitarist Plays Bistro

Pat Surface, an acoustic guitarist from Minnesota, will be performing at the Bistro on Saturday March 3rd. His show includes some of his own original work, as

well as artist like James Taylor, Dan Fogleberg and others. Surface claims he can play 90% of all requests. The concert will begin at 8:30 with the Bistro opening its doors at 8:00.

### Opening Days Prep

Applications for being on the 1990 Opening Days staff are now available at the University Center desk. All applications are due Thursday, March 15. Opening Days Staff help students become adjusted to life at Willamette through small group sessions and by being available for questions if students need help. Interviews for these positions will be held shortly after students return from Spring Break.

### Poets to Read Works

Oregon Poet Laureate William Stafford will be giving a reading of his poems March 6 at 7:30 p.m. in the Hatfield Room at the library. Later on in the week, Stafford will team up with Roland Flint, Willamette's visiting scholar, for poetry readings on the 8th in Cone Chapel at 7:30, with a reception to follow.

### Men's BB Competing

The men's Bearcat basketball team is in search of yet another league championship title in NAIA District II. The Bearcats will be playing at 7:30 p.m. in Cone Fieldhouse and will play either The College of Idaho or Western Baptist, depending on the result of that game.

### Club Brings Back Jazz

The Friday Nite Club will sponsor another edition of "Jazz in the Cat" tonight. The Willamette Jazz Ensemble and Willamette Singers will perform, and dessert will be served. The festivities will commence at 7 p.m.

## Letters continued

- continued from page two

possibly do to be highly accountable, but apparently Ms. Nutt would rather have a bunch of stiff-shirted, administration-minded Fishman clones to rule the campus.

Ms. Nutt also criticized the way in which publicity was handled for the Bistro performance of Timothy Britton. I think that if she had ever interviewed Gilbert (she may have actually learned the truth, but who wants to know the truth, right Ms. Nutt?), she would have discovered that campus-wide publicity is taken care of by ASWU's Publicity Coordinator. It was because of an error on this individual's behalf that the publicity was not distributed. If there is any blame for this oversight, it should fall on the shoulders of the Publicity Coordinator and not Gilbert.

Ms. Nutt tells the reader to demand accountability, to demand to know where their money goes. Gilbert has done a valiant job of stretching dollars this year. Not only has he brought premier movies to campus, but he has also spent less money on the film series than any previous Vice President. Also, this year's Black Tie Affair proved to be the best ever with relative costs of previous years. How can this be? It can be because Gilbert does his homework and cuts deals, instead of wallowing in mediocrity as have past Vice Presidents.

In parting, I would like to say that it is not Gilbert who should be criticized, but people like Stephanie Nutt. Students, like Nutt, complain about lame events and poor publicity. And yet, when the campus is deluged with publicity, as last week's ASWU/KWU dance was, how many people show up? Not more than 100. In my opinion, it is this campus that is not being responsible. In any event, I did not want this campus to take what Ms. Nutt said as the truth, since it obviously was distorted.

Steven T.A. Carter

### Foolishness Lacks Proof

To the Editors:

Thus far this semester *Collegian* readers have been a weekly audience for the opinions of Steve Vanderheiden. Unfortunately, opinions are all they have been thus far. Steve's columns have failed to provide what I expect out of an editorial: an explicit, consistent thesis with facts and analysis to support it. (That or it should be really funny, which I don't perceive to be Steve's intent.) Even if there is truth to what he asserts, my life is still an unenlightened living hell because I have no understanding of why I am wrong. If I am to believe that the sky is falling, which seems to be Steve's general contention, I need something other than Steve's word for it.

Greg Koger

### Honor Code Articles Were Unenlightened

To the Editors:

Last week's *In-Depth* and *Vantage Point* articles regarding the Honor Code were grossly misleading and factually incorrect. Although Professor Yocom was legitimately quoted regarding some of the issues of academic ethics, the story the *Collegian* led

its readers to believe was mostly fictitious. Academic Council has no plans to impose any form of "study under oath" system, but work on the academic honesty policy has been done. Unfortunately, the articles fail to describe it. Had your reporter or editorial writer chosen to attend the Council's meetings on the issue, or to speak with the members of the task force, the stories may have been more clear.

The Academic Conduct Task Force, a group of faculty and students appointed by the Council to review the issue, has drafted a "Statement of Academic Conduct" the intent of which is quite clear: "This statement serves to highlight some of the joint rights and responsibilities of faculty, students, and administrators in supporting and maintaining a culture and ethos of academic honesty and integrity in the CLA." Sections of the two-page draft version deal with scholarship, classroom conduct, examinations, out-of-class assignments, library use, and computer use. The statement certainly does say that students might be subject to "legal action" for conduct in violation of the guidelines. Nowhere does it even hint that students might face disciplinary action for not turning in fellow students. In no way is it an oath that would be sworn to or signed.

Current plans focus on making the statement a discussion topic in the World Views seminar or perhaps in entry-level departmental courses. The intention is to increase awareness of the ethics of scholarship and to clarify the importance of such integrity in a scholarly community. The statement has been discussed by the Council, and some revision was requested. The Council will probably send a final version, along with the plans for implementation, to the faculty for a vote.

At their Feb. 21 meeting, the Council approved a motion asking the Task Force—which is chaired by Professor Bob Dash—to review the enforcement procedures and report back. Strong feelings and sound arguments exist for and against changing the policy. However, the *Vantage Point's* conception of "a simple oath used to ensure that all students are bound to academic honesty. They swear not to cheat, and not to overlook cheating by others. And if a student breaks the oath, the institution may legally prosecute" is about as likely to be imposed as martial law in Salem. In fact, it is not-at-all certain that any changes will be found necessary.

The Council is concerned with resolving the problem of disparities in the sanctions against students who commit similar infractions while maintaining the professor's right to consider the circumstances and decide as he or she feels fit. Other concerns include keeping track of repeat offenses and providing guidelines to assist professors in deciding upon an appropriate response. Crafting a system "to withstand legal challenge" has not even been discussed by the Council.

While it is in the interest of both the University and the individual involved to view violations of academic integrity as serious matters worthy of serious sanctions, your belief that the appropriate response to such situations is a law suit is laughably typical of an L.A. Law/People's Court mentality. One might dare to expect a more enlightened view.

Chris J. Carden  
Academic Council Student Representative

# WAZEAC

## SATURDAY

Mens B-Ball, 7:30pm,  
Cone  
"Jacques Brel is Alive  
and Well and Living in  
Paris," 8pm, Arena thtr

## SUNDAY

Will U Dance?, 3pm  
Smith  
Off the Block- "Cyrano  
de Bergerac," 12pm

## MONDAY

"Look Who's Talking,"  
8 & 10pm, Smith

## TUESDAY

Baseball, Keene  
Stadium, 3pm  
Paul Bergman Lecture,  
7pm, Cone Chapel

## WEDNESDAY

W Tennis, 3pm  
Oregon Symphony,  
8pm, Smith

## THURSDAY

Roland Flint and  
William Stafford  
Poetry Reading,  
7:30pm, Cone Chapel

## FRIDAY

W Tennis, 3pm  
Senior Skits, 7pm,  
Smith

# Freshman Profile Demographics Reveal Political Aspirations, Life Objectives

This year's freshman class smokes fewer cigarettes, is more politically liberal, and is more supportive of legalizing abortion than last year's freshmen, according to the latest Freshman Profile presented to the Board of Trustees by President Jerry Hudson last Saturday. Overall, however, the 1989 freshmen stuck fairly close to the national averages and the averages from last year's freshmen on the profile survey.

The statistics-packed report, compiled annually by the President's office, is a percentage breakdown of demographic, academic, and political views of each incoming freshman class, except the TIUA students.

Most Willamette freshmen are age 18 or 19. 92.8 percent are white; the next largest racial group on campus is oriental, at 3.9 percent.

Over half the freshman said their parents' income is \$50,000 a year or more. About 97 percent said they received an A or B average in high school.

The report also outlines academic and career goals of freshmen; this year, 1.5 percent said they planned to get a Ph.D. at Willamette, although that degree is not even offered here. Over 77 percent say they'll pursue a bachelors' degree.

The most popular field of study is political science, at 19.5 percent.

"That is a combination of the fine tradition of public service of Willamette graduates, the fact that we're across the street from the state capitol, and a strong political science department," said President Jerry Hudson.

Business is the next most popular field, with 18 percent, and the third largest category is "undecided," with 9.6 percent. Law and business finished in a near dead heat for top career choice, with 13.8 percent and 13.5 percent respectively.

"This reflects the significance of the law school and the strong political science department," said Hudson.

The profile also posed several values and issues-related questions, and Willamette freshmen kept within twelve percentage points of the national average on all of them.

Of Willamette freshmen, 17.2 percent feel marijuana

should be legalized, a tremendous drop from 51.8 percent who believed in legalizing pot in 1976.

Nearly three-quarters of the freshman class favor legalized abortion, five percent more than the 69 percent national average. 52.7 percent think it's okay to live together before marriage, and 22.4 percent favor prohibiting homosexual relations, compared to a national statistic of 34.2 percent who would prohibit homosexual relations.

Almost 15 percent of Willamette's freshman class think women's activities should be restricted to the home, compared with 21.9 percent nationally. Hudson pointed out that on the profile survey, no Willamette women said they thought women should stay in the home.

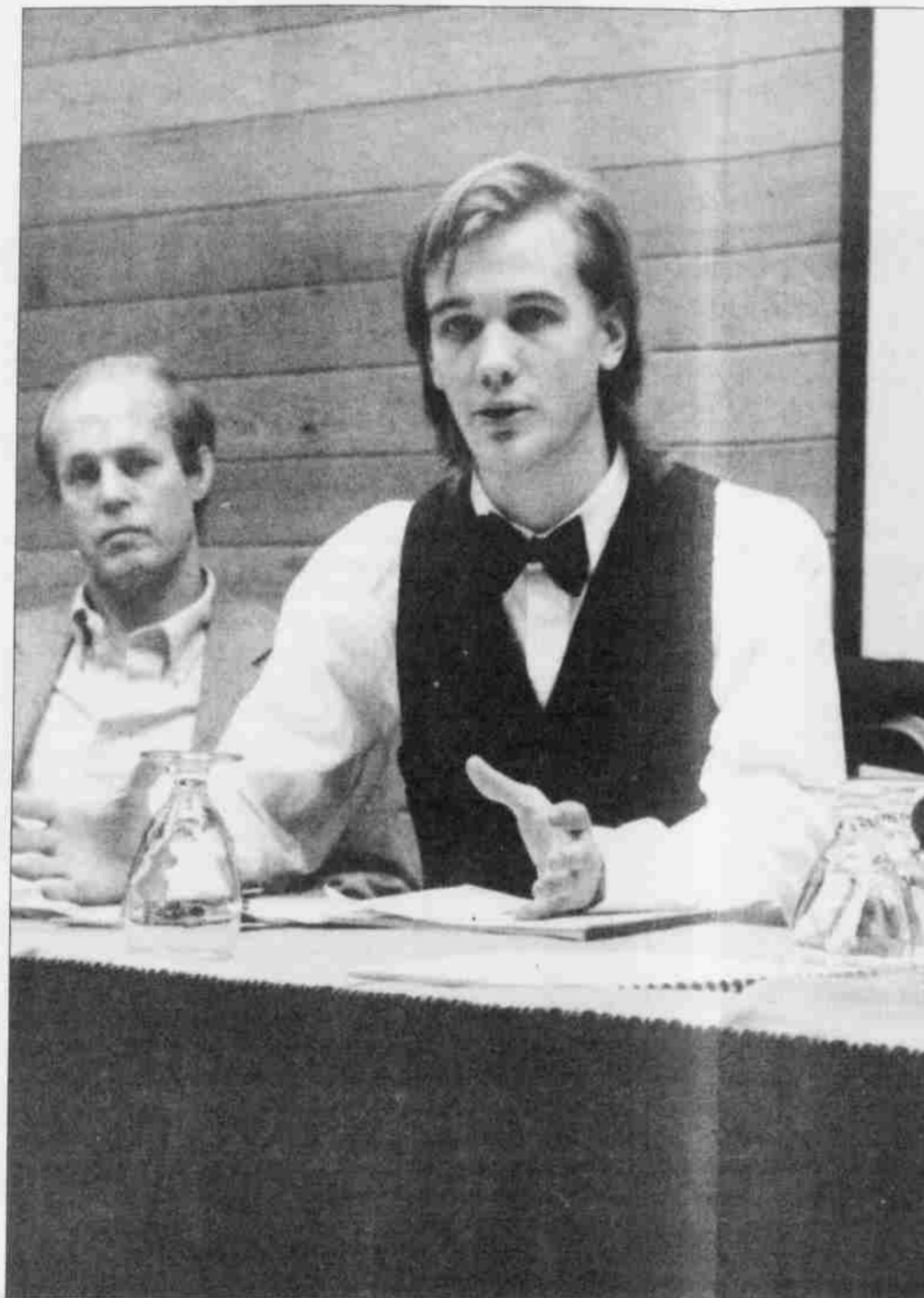
While 72.9 percent said Willamette was their first choice, 73.1 percent said they chose Willamette for its fine academic reputation. Financial assistance, at 44.6 percent, and good job opportunities for graduates, at 41.5 percent, also ranked among the top reasons.

As far as life objectives, 69.9 percent said raising a family was the most important; that figure is exactly in line with the national average. Developing a philosophy of life came in second with 62 percent, a dramatic drop from the 1976 statistic of 80 percent. 60 percent said financial prosperity is an essential objective, and nearly 52 percent said racial understanding is very important. That figure is a remarkable change from 39.5 percent in 1988.

61 percent predicted they'd be satisfied with college, 23.6 said they'd join a fraternity or sorority, and over half said they'd make at least a B average. 18.6 percent planned to graduate with honors.

"There will be some disappointments there; it's not possible for that many students to graduate with honors," said Hudson. In the past year, 97.4 percent said they had been bored in class. 54.9 percent said they had drunk beer, and nearly three-quarters of the freshman class had attended a religious service.

by Stephanie Nutt



-continued from page one

## Food Service Plan to Connect On and Off Campus Students

at the facility and possibly for other services as well. According to Martin Taylor, ASWU President, this alone would improve the quality of the food because of competition for the student's dollar. Since each meal isn't already paid for, students could choose to go elsewhere. This would also allow more flexibility for off campus students and faculty.

"This plan will unite on and off campus students, Greeks and independents, east and west, and the entire Willamette community including Law and GSM students," Taylor said.

The connection of the dining facility to a renovated student center is a logical one, says Hewitt. The plans to turn the UC into a student union were formulated in 1988 and having been enacted slowly this year, but would be put to full use now. Hewitt also sees "an expanded and enhanced Bistro in the student center," saying it would not conflict with the dining facility.

The committee is convinced that while students may at first be skeptical of the plan, they will eventually accept it. "Those students who have been exposed to it have reacted very favorably," said Taylor, calling the decision-making process very open. The committee got input from the student body during two sessions of a student representative forum.

"I think there is skepticism among students over whether it will be done right," said committee member Robert Hawkinson. "To do it right is frankly expensive."

But Hewitt insisted that "It shouldn't be done until it can be done right. It should last another 40 years. We have to look at it with that time perspective." The committee's proposal was approved by the student forum.

The fundraising efforts will become central to Willamette's sesquicentennial fundraising campaign. An estimated \$4.5 million will be required to build the facility and renovate the UC. According to Taylor, however, building the facility will eventually save Willamette money. It's been estimated that centralized dining would save \$190,000 a year, because the current system is so labor intensive.

"We could significantly enhance the quality of dining and quality of food and fund it through the amortization of the cost savings," explained Hewitt.

The trustees did not approve a final plan or any spending authorizations yet. "The next step will be to nail down plans. Someone will be selected to take it to the stage of understanding costs and design alternatives," said Hewitt. He envisions the formation of two committees—one to plan the facility and one to develop uses for the spaces to be opened in the residence halls.

The specific plans will have to be approved by the Board of Trustees at a later date. The construction will begin after approval and when funding is located.

"It's time to change," said Trustee committee member Rich Litchfield. "This will continue the continuity but allow Willamette to become updated and modern."

## 7% Increase in Tuition, Room and Board Approved

Willamette's price increase is official—at last Saturday's Trustee meeting the Board approved a \$750 increase in tuition, bringing the total to \$10,650. Also approved was a \$200 increase in room and board. The increases passed unanimously.

According to the Trustee financial affairs report, this reflects a fairly standard 7 percent increase in fees marked for compensation, staffing, and student aid.

The Trustees also rejected a proposal brought by ASWU President Martin Taylor that would guarantee entering freshmen that tuition would not rise more than a certain percentage each year. "Although we support such a proposal," said the Trustee Financial Affairs Committee chair A. Goody, "We don't desire to guarantee anything in case something were to happen."

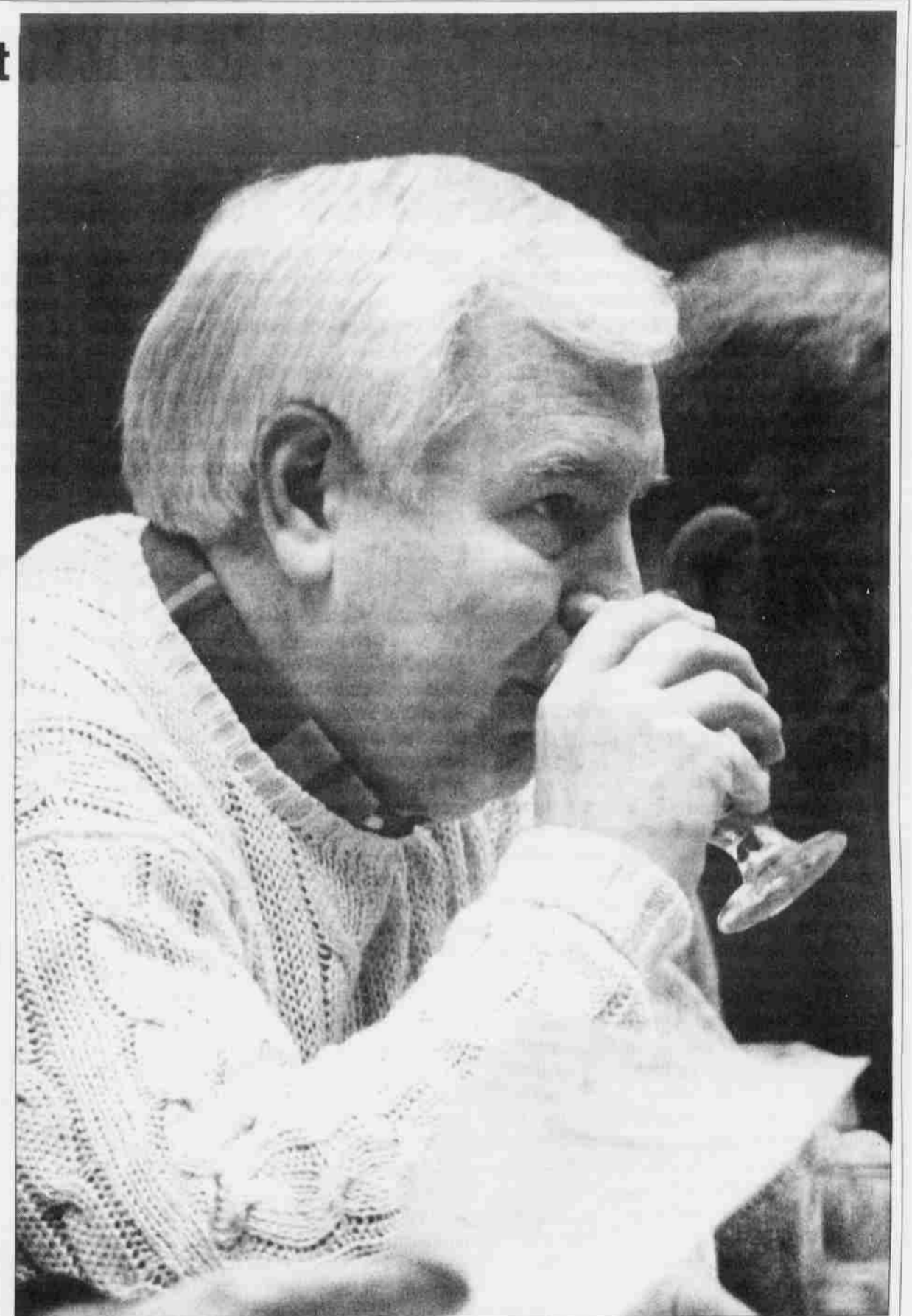
"Historically, the Financial Affairs committee has tried to maintain costs at approximately a 7 percent increase each year. We're [both] looking towards the same thing, and hopefully we'll be able to arrive at some means so that everyone gets what they want without a guarantee," he continued. He promised more discussion of the proposal.

Taylor said that although he went to the Trustees meeting with no expectations the result wasn't quite what he had hoped for. "I understand the Board's hesitation to tie the University's hands, but I think the proposal is a flexible one and I think students should be worth the risk to guarantee tuition," he said.

"There has been a positive outcome on this level," he continued, saying he was satisfied with that. "I feel as long as they feel responsibility to justify a raise in tuition beyond a cost of living increase and they inform incoming freshmen that tuition will increase, then they're following the proposal anyway."

He said he completely understood the Board's dilemma and was happy that "they continue to listen to student concern. That is relatively unprecedented."

by Duessa Easton



## Sesquicentennial Requires Funds

Over the past six years, Willamette's endowment ranking has slipped from 97 to 134 among private liberal arts colleges with fewer than 2600 students, prompting the President and Trustees to launch a fundraising effort which will net an estimated \$50 million by 1994.

Willamette, formerly first in endowment assets among Northwest liberal arts colleges, now ranks below both Reed College and Whitman College. Willamette's endowment assets as of June, 1989, are \$72,176 million, compared to Reed's \$74,528 million and Whitman's \$95,455 million.

Willamette's 150th birthday, or sesquicentennial, in 1992 will be marked by a "concentrated, formalized approach" to fundraising, hopefully garnering \$10 million a year, according to University President Jerry Hudson.

Over the past five years, contributions to endowed funds have averaged \$1.9 million a year, according to the Sesquicentennial Campaign Proposal submitted to the Board of Trustees. The significant planned increase in the endowment will fund academic programs and capital construction.

The proposal outlined \$5 million for faculty positions, \$5 million for student scholarships, \$2 million for science and computer equipment, \$1 million for faculty and curriculum development, and \$2 million for programs such as undergraduate research and international education.

The planned \$5 million unrestricted endowment serves as an "emergency fund," to be applied to the most urgent needs in the University's educational budget. Unrestricted endowment projects outlined in the proposal include increasing minority representation on campus and funding new student-initiated activities.

Some of the sesquicentennial campaign money is set aside for capital construction, or expanding existing physical facilities.

The capital projects will cost an estimated \$18 million. Hudson predicts that "we can raise that much money," noting that gifts to both endowment and non-endowment funds over the last five years have totaled nearly \$26.5 million. "That ought to be reassuring," said Hudson.

by Stephanie Nutt

# The SALISHAN Weekend

**The Board of Trustees met February 24, 1990, at Salishan to discuss matters of Willamette food service, tuition, freshmen and sesquicentennial. Collegian writers Duessa Easton and Stephanie Nutt were there to report the results.**



## Simferopol Student's Visit Canceled by Red Tape and Time

by Suzanne Budd

A lot of people were looking forward to a visit by Andrey Rozhnov this semester. Rozhnov, a student at Willamette's Soviet sister school, Simeferopol University, was slated to come to Willamette this fall to study and assist in the language lab. Due to red tape and time, however, those plans had to be canceled.

Rozhnov was coming on a visitor's visa, according to Director of International Education Buzz Yocom. The problem stemmed from a provision that doesn't allow visitors to work, which Rozhnov would have done in the language lab. Yocom explained the University worked with Senator Mark Hatfield to get a regular visa, but "by this time [Rozhnov's] visa had already been denied by the U.S. consulate." Professor

- continued from page one

## Grants Draw Interest

diversity of applications for last year's grants "reflected the quality of Willamette's undergraduates throughout the disciplines and their ability to carry out research at a sophisticated level." "Right now Willamette is a leader in undergraduate research...we are providing opportunities not available at most schools", she said. "I expect that the high level of interest shown by students and faculty in the program will continue to increase," Carson said, adding that "I hope to see the program continue to grow and develop in response to this."

Carson, Professor Sharon Rose of the Biology Department and several students who received grants last year will hold an information session for those interested in applying for a grant on March 8 at 6:30 p.m. in Smullin 108. Grant applications are due March 30 and students will be notified of awards during April.

Sam Hall, who helped spearhead the effort, said the University "sent new paperwork over, for him, to Leningrad." But because of time considerations, this semester's trip was canceled.

As Yocom said, "Things like this, in the Soviet Union, you plan for months ahead. Sudden changes do not happen."

The disappointment at this turn of events is especially strong in the two instigators of the exchange, Hall and Professor Magda Schay. Schay met Rozhnov

on an exchange to the Soviet Union where he was "a student who was extremely helpful to our students. He was helpful, but not overbearing." Hall, who characterized the young man as "enthusiastic, even aggressive about meeting people from the United States," said that the idea to bring him over seemed natural. "When he wasn't in the regular exchange [scheduled for the spring]." Hall explained, "We began to look for a less 'official' was to get him here."

Frustrated and regretful were

feelings mentioned by those involved. Hall sensed some irony as well. "I am reminded of what you hear about Soviet bureaucratic difficult. He managed to get through those but then he met our bureaucracy." Schay said the length of the visit and the unofficial aspects may have contributed to the outcome. She alone has worked on this project since last June. Both professors could not give estimates on whether Rozhnov would be able to come in the future, but both remain hopeful.

## Faulkner Scholar Minter Speaks to Humanities Students

by Steve Vanderheiden

Renowned Faulkner scholar David Minter spoke Wednesday on "The Great Depression and the Literature of the South." As part of Professor Strelow's *The Sound and the Fury* Senior Humanities Seminar, Minter gave a public lecture on Wednesday, spoke to the seminar class on Thursday, and met privately with individual students Thursday and Friday.

Minter is the Dean and a Professor of Literature at Emory University, and is considered the "top Faulkner scholar in the country," according to Strelow. His work, including a biography of Faulkner and the Norton Critical Edition of *The Sound and the Fury*, has been acclaimed for its authoritative faithfulness to Faulkner's life and texts.

Minter suggested that the prevailing images of South's poverty and sloth gave rise to some of the century's greatest literature in the 1930s. "The writers of the Thirties," he argued, "attend the great particulars of their world in the belief that all is not well, and never will be." Characteristic of the Southern writers philosophy was the belief that "wealth is the ability to impose your will on the environment."

The program under which Minter and other leading scholars have been invited to lecture to Willamette's Senior Humanities Seminars has been a "tremendously popular and successful one," according to Strelow. Under the direction of Professor of History William Duvall, along with English Professor Virginia Bothun and Professor of Religion Lane McGaughey, the Humanities departments received a grant from the National Endowment for the Humanities of about \$300,000 to establish a single text seminar for undergraduate majors in English,

History, Philosophy and Religion.

With the funding, the University has been able to invite to campus the top scholars of the various texts, as well as provide what Strelow describes as a "graduate school level of course." When the grant money ran out several years ago, the University committed themselves to continuing the program. "It's expensive," says Strelow, "but everybody who's taught the course, and those that have taken the class have been very pleased with the results."

## Belknap to be Remodeled for '90-'91

by Susan Domagalski

Freshmen living in Belknap next fall may never know about its colorless past. Residence Life is now preparing for this summer's remodeling of the hall, which has not been redone since its construction in 1961.

According to Director of Residence Life Tim Pierson, current plans are to put in carpet, refinish existing woodwork, replace metallic beds with wooden bunkbeds, and add new lounge furniture. Under consideration are lighting improvements and individual antenna hook-ups.

The price of the project will be "in the neighborhood of \$100,000, but probably

more," says Pierson.

Over the next six weeks, Pierson will work with Belknap's hall government to develop a color scheme and address any concerns residents have. Residence Life will also employ the designer they hired when Matthews was remodeled last summer.

The remodeling will "hopefully hold Belknap together style-wise," since now "the colors are bleah," says Belknap RD Deidre Yost. Derek Finck agrees, saying that his first impression of his room was that "it sucked." Angie Smith related her experience in the hall: "The furnishings are aesthetically displeasing and morally reprehensible."

## Students to 'Remember When...'

by Missy Swenson

The time-honored Willamette tradition of Freshman Glee begins Sunday, as the freshmen begin to practice their songs and formations for the theme "Remember When..."

Few changes are being made in the format, with only two drastic alterations. The first change is the selection of four people to whom Glee is dedicated instead of the traditional one; the second is the use of a white backdrop instead of the usual black one which was misplaced last year. This year, Glee is dedicated to the four retiring Willamette professors Kent Markus, Marta Valez, Chuck Bowles and Wright Cowger. Other honored guests are members of the Class of 1940, which is celebrating its fiftieth class reunion this year.

For the six overall Glee managers, Trevor Wentlandt, Clark Rice, Michelle Fraleigh, Liz Parks, Scott Gerber and Cathi Woods, the coordinating of has been a relatively easy process, with only a few difficult moments in setting a budget.

"Getting a budget down we hope will work, when little things keep popping up," Wentlandt claimed was the most difficult aspect of Glee.

Since their selection in November,

the overall managers have been working on the election of class managers, scheduling times for practice, working on publicity, selecting judges, working on the program, coordinating the setting up of Cone Fieldhouse a week from Saturday night, and numerous other details to make everything run smoothly.

The schedule for Glee runs much as it has in the past, with the freshmen having one extra practice Sunday, March 4, before the other three classes start. The schedule then rotates with each class having a 5 a.m. practice and a 9:30 p.m. practice, and all classes practicing from 12:20 to 1:15 p.m., with a final practice Saturday from 8 a.m. to noon.

Also returning for this year's Glee are the annual Senior Skits to be held Friday in Smith Auditorium. In the past, the skits have been of amusement to the Willamette community and promise to be the same this year.

Freshman Glee starts Saturday at 7:30 p.m. in Cone Fieldhouse. Admission is free for WU students and \$3.50 for non-students. Glee will conclude with Blue Monday on the 12th, when the losing class will walk the Mill Stream and all Glee bets will be paid off.

## SENATE NOTES

March 1, 1990

by Seena Cassim

In last night's Senate meeting a funding request for Willamette Outdoors was approved for the amount of \$1,000. \$715 was for equipment and \$285 for trips.

Senate also approved a funding request from Club Willamette for \$35.

President Jerry Hudson came and spoke to Senate about the \$950 increase in tuition, room and board. According to Hudson, the three main reasons for the increase were for compensation to keep and attract valuable faculty members, additional staff members will be needed next year and \$400,000 in financial aid.

Senate approved a questionnaire that will be distributed with the new paper The U.

New guidelines were approved with reference to Election Board members applying for committees.

Senate recommended that the trophy case in the Womyns Center be moved into the second floor of the UC.

Senate recommended that the deadline for applications to go abroad be extended from March 5 to 9.

Secretary, Rosa Alvarez, announced that applications for the Awards Committee are available and can be picked up by any interested juniors.

# FEATURE

## U of O Professors Display Disparity in Art at HBF Gallery

Two very different artists are sharing the Hallie Brown Ford Gallery to show their work. While both are art professors at the University of Oregon, and they agree on some philosophical points, the litho and silkscreen of Ken Paul contrasts sharply with the colored pulp and crayon of Margaret Prentice.

insists.

"You should see these on your own terms," he stressed. "Whatever you bring to it" is what matters.

"The seeds for what you see began five years ago when I had a residential fellowship in my home state of Wyoming," said Paul. "I had an etching press and eight weeks to do what I pleased."

The images in Paul's work lack clarity, but that's no mistake: he believes strongly that "ambiguity is important to art."

Prentice's works stand out in the gallery like the proverbial sore thumb. Their earthy browns, turquoises, and off-whites exist in striking opposition

to Paul's works.

The origin of the colors can be found in Prentice's adventures of last summer when she traveled to Southern Utah to observe rock formation. She says that her work was inspired by "rock stratifications."

She made forty images of the Utah scenes on paper then took them into the studio and "responded to images that were already there."

As most of her work is part of different series, Prentice uses the analogy of her relationship with her identical twin sister

to describe her art: "there is this real unique excitement with being in a relationship with [my twin sister], but you recognize the uniqueness" of the individual as well. In other words, a piece can stand alone, or it can also work well as a part of the series.

She says that she likes "a provocative image— something that seems to suggest something but doesn't." Prentice is correct except for one part— her work doesn't even come close to suggesting anything.

The ugly humanoid stick figures crayoned on backgrounds of earth tones resembles cave drawings.

The gallery then adds insult to injury by placing her uninspiring two-dimensional works next to Paul's colorful and animated pieces— definitely an unfair comparison.

Paul's and Prentice's works will be on exhibit in the Hallie Brown Ford Gallery on the top of the art building through March 7.

by Kevin Grossman

### ARTReview

In fact, the instant one walks into the gallery, the disparity between the two becomes glaringly apparent. And, unfortunately, it works much to Prentice's disadvantage.

Paul's works use bright colors and abstract forms. Many seem to conjure up images of hell proper, including my favorite, *Bow River Oracle*, where bright red "flames" appear to lick at disfigured crosses.

But even Paul himself doesn't know what the images are in his work. They're "spontaneous, off-the-wall," he

## Band to Break in Reno

The Willamette University Band, directed by Dr. Martin Behnke, will participate in a divisional conference from March 22-25 in Reno, Nevada. The band was invited to participate, after sending in audition tapes, by the College Band Directors National Association, Behnke said.

Some of the other participating schools are UCLA, the University of Oregon, the University of Washington, the University of Hawaii and the University of Melbourne, Australia. Including Willamette, there will be a total of eight schools participating in the conference, according to Behnke.

The group, consisting of about 46 members, began preparing for the conference at the beginning of the semester, meeting three times a week during regular class sessions, Behnke said.

"This is one of the strongest bands I have had," Behnke said. He also said that there is a core of very strong players and that any weaknesses are made up for because the members are "committed to making it (the band) the best it can be."

The band will perform two concerts, one in Susanville, California, in the afternoon of the 22nd and another in Reno in the morning of the 23rd at the College Band Directors National Association, Behnke said. Featured performers will include Professor Wallace Long singing a baritone solo and Dawna Davies who will perform an oboe concerto along with the band.

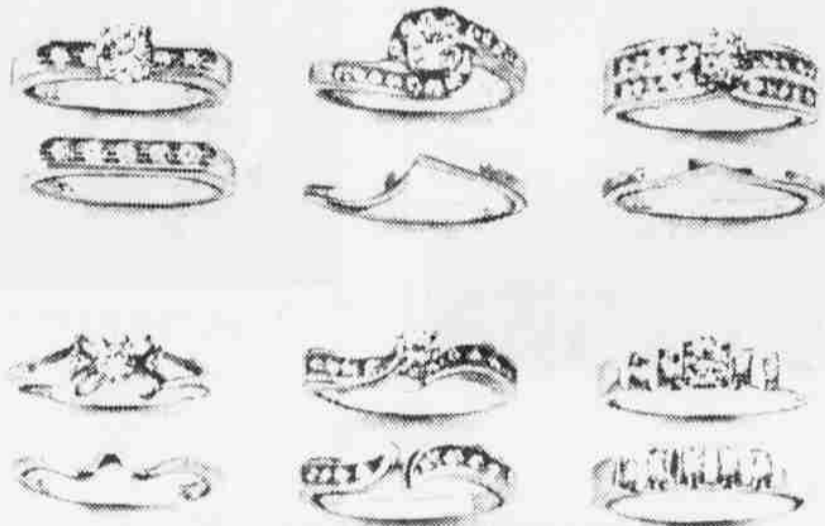
In past years, the band has traveled as far as central California and places such as Canada and Idaho, according to Behnke. He feels that Reno is a special privilege.

"It's a challenge to be able to go to Reno," Behnke said. He added that he liked doing this kind of performance because it is a solid focus and also that the band recognizes the importance of the invitation and will work hard at trying to do well.

The group will be performing at Willamette March 14 and will hold another concert sometime in April, which will also feature the Willamette University Choir, Behnke said.

by Gretchen Anders

## Bridal Jewelry Show



This isn't just a selection! This isn't just a collection. This is every Gold — and Gold and Diamond Wedding Ring from the leading Wedding Jewelry Company. Their representative will be here from New York to show you the classics, the dainty, the modern and the newest of the new! Hundreds of styles to choose from — and one just perfect for the both of you.

**GOLDMAN™**

When it's the choice of a lifetime.™

**LAZARE DIAMONDS**

Sold exclusively at Vernon Jewelers

**SHOW HOURS**

Friday 9:30am-9:00pm; Saturday 10:00am-6:00pm; Sunday 11:00am-5:00pm  
March 2, 3 & 4

**VERNON JEWELERS**

230 Liberty N.E.

Salem, OR 97301

**378-0191**

## FRITJOF CAPRA JANE GOODALL

Fritjof Capra, Ph.D., physicist, environmentalist and futurist at UC Berkeley, presents a public lecture with extended Q&A. In *The Tao of Physics*



ies he showed parallels between ancient mysticism and modern physics. In *The Turning Point* he combines a holistic approach, ecological and feminist perspectives, and global economic alternatives.

Also, Policy Forum, March 10th, 10 am, Portland Hilton. In Eugene, Policy Forum, March 11, 10 am.

**IN PORTLAND**

Friday, March 9, 7:30 pm  
Portland Civic Auditorium

**IN EUGENE**

Saturday, March 10, 7:30pm  
Hult Center



On July 14, 1960, Jane Goodall, a 26-year-old woman from Boume-mouth, England stepped from a government launch onto

the shore of Lake Tanganyika. She had been sent by the famed anthropologist/paleontologist, Dr. Louis S. B. Leakey, to begin a long-term study of chimpanzees in the wild. Her work has become legendary.

Also, Policy Forum, April 7th, 10 am, Portland Marriott.

**IN PORTLAND**

Friday, April 6, 7:30 pm  
Portland Civic Auditorium

**IN EUGENE**

Tuesday, April 10, 7:30pm  
Hult Center

Tickets at G.I. Joe's TicketMaster in Portland and the Hult Center in Eugene. Student discounts available.

Presented by Institute for Science, Engineering and Public Policy Co-sponsored by Oregon Public Broadcasting, Portland State University Continuing Education, The Waggener Group, Oregon Advanced Computing Institute and special thanks to the Heathman Hotel and Eugene Hilton.

## Baseball Expects Continued Success After Win Over Concordia

by Chris Mehelis

The baseball season opened last Saturday for the Bearcats. In a game originally scheduled against the University of Washington, Washington didn't make the trip to Oregon, so the Bearcats arranged to play Concordia. In 14 innings of scrimmage baseball the Bearcats triumphed, 9 to 4.

In the 14 innings, all the Bearcats saw action, and six pitchers were used. "We tried to spot check our defense and pitching, to see how we stack up this early in the season," said Coach Jim Denevan.

Denevan believes this early season win is just the beginning of what he expects to be a successful season in which the Bearcats will go far. The Bearcats have youth—a third of the team are freshmen—as well as proven veterans. Such veterans include the likes of the lone seniors on the team: Dave McCann and Bob Stockenburg. Named Co-Captains of the 1990 Bearcats squad, McCann has proven he can throw the ball, and Stockenburg can hit it. In the 1989

season, Stockenburg led the Bearcats in batting average, hits, home runs and walks.

"Lacking on this team are long ball hitters, but the strength is the pitching staff with its experience, depth and versatility,"

said Denevan. "Also, the squad is quite strong defensively; I think the combination of the strengths compensates for any weakness the team has."

The team has been practicing since

fall, putting in about 20 hours a week since the beginning of spring. The team is confident they will see positive results. "I want to see results from the youth; I've put my confidence in them," said Denevan.

## Men's Tennis Begins Season with Optimism

by Mark Gerson

It's that time of the year again and the Willamette men's tennis team is primed for a very successful season. After an excellent season last year including winning district, and placing second in conference, coach Russ Beaton is very optimistic about this year's team. "We've got a solid team that really meshes well. We probably will again place second in conference. We probably will be second in Conference as, PLU will be extremely tough again this year."

The season has already begun for the team. The team started the season with a tough loss to the University of Portland.

Beaton was still optimistic about the loss. "The University of Portland is always a very tough Division I school, because they offer tennis scholarships, and we only lost 5-4." The team enjoyed better success at the Falcon Invitational tournament. WU also won its first district match beating Pacific University 7-1.

This is Beaton's ninth year as the tennis coach at Willamette. Beaton didn't even start playing tennis himself until he was in his mid-thirties, and has taught himself how to coach. This late start hasn't hurt Willamette's team, as the team has gone to Nationals seven out of the last eight years and the last four in a row.

The team has quite a few returning players, and according to Beaton, "Almost any one of our top five could compete with any team's number one player." The number one spot will probably rotate between Kelly Tuttle, David Jerke and Rick Wood." Other top players who figure to play in the top six include John Lovell, Swain Porter, Andrew Shipman, Chris Meyer and Adrian Chin. Shawn Sorenson, Jeff Curl, Erik Freidenrich, and Sean Crooke round out the team.

### SUMMER JOBS

Over 50,000 summer job openings at Resorts, Camps, Amusement Parks, Hotels, National Parks, Businesses, Cruise Lines, Ranches and more in the U.S., Canada, Australia, & 20 other countries. Complete Directory only \$19.95. Don't wait till after finals. Send to Summer Jobs, Drawer 38039, Colorado Springs, Colorado. 80937

# JOIN THE JET SET

If you've always wanted to join the jet set, Navy aviation is the way to go. Today's Navy offers college students an unbeatable opportunity - officer training before graduation with guaranteed follow-on flight training. Two exciting programs lead to a

- Naval Aviation Cadet (NAVCAD)
- Baccalaureate Degree Completion Program

Both lead to a commission as a Navy officer and pilot/officer training.

Navy officers are well paid, with special allowances and exceptional benefits that can mean a lot to people on their way up.

To qualify, you must be 19-24, pass an aptitude test and physical examination, be a U.S. citizen, and comply with our NEW VISION STANDARDS of 20/30.

Join the jet set in today's Navy. For information, visit or call:

Tuesday, March 6, 10-3  
Placement Center  
1-800-543-7287



# LSAT GMAT MCAT GRE

Test Your Best!  
Classes Forming Now.

STANLEY H. KAPLAN  
Take Kaplan Or Take Your Chances  
The Galleria, 4th Floor  
Portland, OR 97205  
222-5556  
FREE DIAGNOSTIC TESTS



# DOODADDLE'S

FUN CO.

## BALLOONS! BALLOONS! BALLOONS!

Over 300 Designs

Sign up NOW for Student Discount Card. All you need is a current student body card. (Discount good thru June 15, 1990.)

- 10% off Mylar Balloons. Only \$2.25 with discount card (Reg. \$2.50.)
- 10% off Balloon Wrap. Wrap your gift inside a balloon! Only \$4.95 with discount card (Reg. \$5.50)

MONDAY THRU SATURDAY • 10:00 AM TO 6:00 PM



1223 Commercial Street SE • (One block S. of Dr. Munchie's Pizza) • Salem, OR • 581-6604

## Department of the Navy NAVAL REACTORS

Navy representatives will interview engineering, physics, chemistry, and math majors with 3.3 GPA or better on Tuesday, March 6, 10 a.m. - 3 p.m. at the Career Placement Center.

Appointments can be made at the Placement Center or call: 1-800-543-7287

### NAVY OFFICER

You are Tomorrow.  
You are the Navy.