

# WILLAMETTE UNIVERSITY STUDENT HANDBOOK



VOLUME XLII

1935-1936

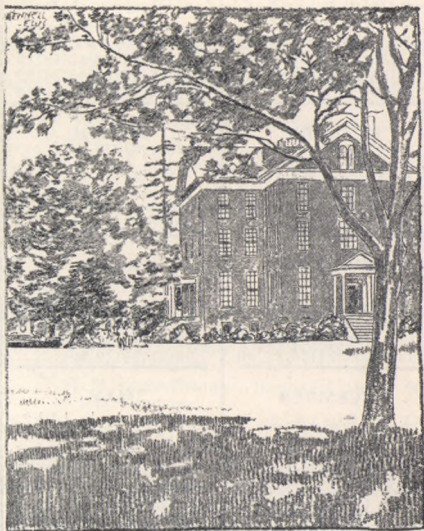
Published by  
THE ASSOCIATED STUDENT BODY OF  
WILLAMETTE UNIVERSITY  
LILLIAN POTTER, Editor

## FOREWORD

The purpose of the Associated Student Body in presenting this handbook is to provide a brief survey of events which will continue throughout the year. This first greeting to the new students on our campus is an attempt to forecast the future from past experience, to provide an aid for your orientation, and to explain Willamette's mellowed traditions and vigorous activities.

Accept these traditions and cherish them, for in later years they will prove dear to you. Allow me to extend to you a personal wish for four happy years on the friendliest campus in existence.

THE EDITOR





## 1935 — CALENDAR — 1936

## SEPTEMBER

S	M	T	W	T	F	S
1	2	3	4	5	6	7
8	9	10	11	12	13	14
15	16	17	18	19	20	21
22	23	24	25	26	27	28
29	30	....	....	....	....	....

## OCTOBER

....	....	1	2	3	4	5
6	7	8	9	10	11	12
13	14	15	16	17	18	19
20	21	22	23	24	25	26
27	28	29	30	31	....	....

## NOVEMBER

....	....	....	....	....	1	2
3	4	5	6	7	8	9
10	11	12	13	14	15	16
17	18	19	20	21	22	23
24	25	26	27	28	29	30

## DECEMBER

1	2	3	4	5	6	7
8	9	10	11	12	13	14
15	16	17	18	19	20	21
22	23	24	25	26	27	28
29	30	31	....	....	....	....
....	....	....	....	....	....	....

## JANUARY

....	....	....	1	2	3	4
5	6	7	8	9	10	11
12	13	14	15	16	17	18
19	20	21	22	23	24	25
26	27	28	29	30	31	....

## FEBRUARY

S	M	T	W	T	F	S
....	....	....	....	....	....	1
2	3	4	5	6	7	8
9	10	11	12	13	14	15
16	17	18	19	20	21	22
23	24	25	26	27	28	29

## MARCH

1	2	3	4	5	6	7
8	9	10	11	12	13	14
15	16	17	18	19	20	21
22	23	24	25	26	27	28
29	30	31	....	....	....	....

## APRIL

....	....	....	1	2	3	4
5	6	7	8	9	10	11
12	13	14	15	16	17	18
19	20	21	22	23	24	25
26	27	28	29	30	....	....

## MAY

....	....	....	....	....	1	2
3	4	5	6	7	8	9
10	11	12	13	14	15	16
17	18	19	20	21	22	23
24	25	26	27	28	29	30
31	....	....	....	....	....	....

## JUNE

....	1	2	3	4	5	6
7	8	9	10	11	12	13
14	15	16	17	18	19	20
21	22	23	24	25	26	27
28	29	30	....	....	....	....



## COLLEGE CALENDAR

## 1935

- Sept. 16, Monday—Freshman Days begin, 9:00 A. M.
- Sept. 17, Tuesday—Registration Day for Freshmen.
- Sept. 18, Wednesday—Registration Day for other students.
- Sept. 19, Thursday—Recitations begin, 7:45 A. M.
- Oct. 19, Saturday—Homecoming (tentative).
- Nov. 28-29, Thursday, Friday—Thanksgiving holiday.
- Dec. 20, Friday—Christmas Recess begins, 4:00 P. M.

## 1936

- Jan. 6, Monday—Christmas Recess ends, 7:45 A. M.
- Jan. 27-31, Monday-Friday — Examinations for First Semester.
- Jan. 27-31, Monday-Friday—Registration for Second Semester.
- Feb. 3, Monday—Recitations for Second Semester begin, 7:45 A. M.
- Mar. 22-29—Spring Vacation.
- May 1-2, Friday, Saturday—May Festival, beginning Friday, 1:00 P. M.
- June 8-12, Monday - Friday — Examinations for Second Semester.
- June 14, Sunday—Baccalaureate Sermon, 11:00 A. M.
- June 15, Monday—Commencement Day.



**DR. BRUCE R. BAXTER**  
**President, Willamette University**

## TO THE FRESHMEN

I welcome you to an institution which has waited ninety-one years for you to come. I hope you will prove that this long waiting has been justified. I welcome you to a university which consists of far more than campus and buildings. Here you will find a wealth of tradition coupled with a very evident spirit of progressiveness. It is trite to tell you that you will get from a college course whatever you put into it, but this is certainly true. I hope that from the opening days you will make friends with faculty members and fellow students and that these friendships may continue throughout long years. Welcome to the Willamette family.

BRUCE R. BAXTER,  
President, Willamette University.





It is no perfunctory task to welcome the incoming class. You represent such splendid possibilities for growth in your understanding of, and in your outlook upon, life. Much depends on the homes from which you come; much upon the spirit and purpose of the individuals who constitute the class; much on the spirit which dominates the class. We welcome you most heartily for your optimism, for your energy, for your very freshness. It is you who keep the University young; and your association here with others of a like purpose through four formative years is a privilege to be highly prized. We welcome you to the mystic brotherhood of those who seek the satisfactions of scholarship.

**FRANK M. ERICKSON,**  
Dean of Willamette University.



To the Freshmen:

To you young people who will be arriving in Salem and planning to attend Willamette this fall I give a hearty welcome. I want to offer to you my unstinted time, my deepest interest and friendship, and any and all advice that you care to ask for. I hope that this year will mean something new and different to you and that you will let me and my office help you in every way that it is possible for one person to help another. Do not hesitate to call and ask for help. You are always welcome. We all wish you a very happy and profitable year at Willamette.

OLIVE M. DAHL,

Dean of Women.



Welcome to you, class of 1939!

As you enter Willamette we bid you a hearty welcome to the ever growing "Willamette family." We are confident since you have made the decision to come here, that we may depend upon your cooperation with us in the promotion of the genuine interests of this "family."

In entering this institution you are entitled to all the privileges and advantages which it offers; but it is well to consider that there are obligations also, which we are confident you will accept cheerfully. We invite you to use us and to make yourselves useful wherever and whenever possible. It is not our purpose to make decisions for you, nor to solve your problems, but it will give us genuine pleasure to be of service to you in these matters. Will you give us an opportunity to assist you with your problems, of whatever nature they may be?

Yours for a pleasant and profitable year.

D. H. SCHULZE, Dean of Men.





Familiarity with A. S. W. U. finances is not complete until the student has found his way to the general manager's office. The student body of Willamette University maintains and operates a business office under the direction of a general manager. The office is located in the gymnasium. Authorization for expenditure of A. S. W. U. funds is obtained from this office. All money received by managers or collected by any of the A. S. W. U. activities is turned in to the general manager's office. Student activity tickets and hand books may be obtained from the office. If you are a returning student, make use of the office. If you are a new student, you are invited to become acquainted with the organization and administration of A. S. W. U. money.

LESTLE J. SPARKS,  
General Manager.





### TO THE INCOMING FRESHMAN CLASS

Willamette University offers much to you students who are the youngest members of its student body. The wealth of tradition coupled with a fine faculty can make for a fine college year, giving those essentials which make for a full life.

The purpose of this handbook—the “bible”—is to acquaint you with the traditions, songs, and student body activities of Willamette. May I urge you to study the enclosed data carefully so that you will become a real part of our school. As president of the student body for the ensuing year, and speaking as a representative of this student body, allow me to welcome you to Willamette and hope that you will get as much from your college lives as have other freshman classes who have entered our school.

**BRONGWYN WILLIAMS,**

President A. S. W. U.



### WELCOME

We of the Willamette Y. W. C. A. add our warm welcome to those of other members of the student body, to the Class of '39—especially to the girls. Our desire is that you find your college days here as happy and profitable as we have found them. We hope you will join our Y. W. in order that we may work and play together. In this way, both you and we, who are members now, may develop more completely the type of personality so needed today, a socialized personality.

You will find our room in Eaton hall a place to rest and to enjoy the comradeship of those who have acquired the habit of using the facilities offered there.

HELEN KNIGHT,  
President of Y. W. C. A.



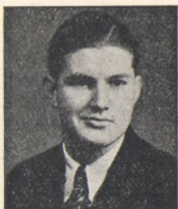
### WELCOME '39!

It is a real pleasure to welcome you as members of the class which is to have the opportunity in the next four years to carry forward the ideals and aspirations of Willamette.

We, of the preceding classes, see things that need the help of new and vital blood that you will instill in our life here. Mistakes we have made you will need to rectify; and advancements we have aided and begun you must promote with the spirit of cooperation that makes Willamette so outstanding in its field.

For these ends you will need the help of the most sacred part of our existence—the church—which you will find ever ready to serve you. It is the wish and duty of the Y. M. C. A. to help you keep that contact with the finer things of life. Each one of you comes into our ring of friendship with ideals that must be fostered and enriched while you are here. May this be your greatest achievement.

GEORGE SELF,  
President of Y. M. C. A.



Welcome, members of the class of "39." Blue Key congratulates you for having chosen Willamette. We believe you will find here an unforgettable spirit, glorious traditions and high scholastic standards. Willamette seeks to develop a well rounded personality through her classes, intimate contact with professors, and extra-curricular activities. We hope that in them you may find the development that will make your college days a credit to yourselves and to our school. Again we say welcome and continued success in your endeavors.

Sincerely,

GALEN DEAN,  
President of Blue Key.



### GREETINGS, '39!

We who have been on the Willamette Campus for a time welcome you, the Class of 1939. We feel that you have chosen well the college for your training. Willamette is unique in its history, well rounded in its curriculum, and hopeful and expectant in its future.

Some of you will become members of the International Club. All Willamette students who have been citizens or residents of any country other than continental United States or who are members of any race other than the white race may automatically become members of the club. The International Club fosters fellowship and better understanding among those of different nationalities. We believe that men should be considered on the basis of their individual worth and not on the basis of race or nationality. We greet you to a campus where race consciousness and feeling are at a minimum.

Internationally yours,

**LAURANCE BURDETTE,**  
President of International Club.

## TRADITIONS

### Homecoming

Every year there is one week end given over to the entertainment and welcoming of "Old Grads" of Willamette. There are three major campus social events which take place during the year and this is one of them. The Homecoming play on Friday night will begin the activities. The alumni banquet will formally initiate Homecoming, however, on Saturday. This banquet is followed usually by a football game---the Bearcats will probably attack the College of Idaho on Sweetland field. During the half the Freshmen should be prepared to compete in the annual bag rush against the Sophomores. This same evening, victory will come to some sorority or fraternity for their Homecoming signs.

### Freshman Glee

Freshman Glee is held early in March each year, and is the occasion of great inter-class rivalry. Each class presents an original song, and the winning class is awarded the coveted Freshman Glee Banner.

Through this contest Willamette has come into possession of many beautiful songs, and has become noted for its music.

### May Day

Our annual May Day Festival is the last all campus traditional event. It takes place on the first week-end in May. Activities begin in one of the local theaters where our fellow students present a program and we indulge in a pep meeting between shows; this is known as Willamette night. The next morning the May Morning Breakfast takes place in Lausanne Hall. This will probably be followed by a baseball game at Olinger field or possibly a tennis match. Then in the afternoon the coronation of the queen will take place; this is usually preceded by a program of dancing and music in honor of the queen. The last appearance of the queen and her attendants will be at the May Week End play held in the Salem High School auditorium.



### CUSTOMS

We are WILLAMETTE STUDENTS, first, last, and always, and proud of it!

A smile and "Hello" are expected from every student at all times and without exception.

Rise when "The Old Historic Temple" is sung.

Everyone learns the yells and songs in this book.

Freshmen do not enter or leave chapel by the side doors.

Only Seniors use the Senior bench.

Only upperclassmen wear corduroys.

Students do not smoke on the campus.

Street shoes are not worn on the gym floor.

Everyone is present at all Student Body and Class meetings.

Each student is a member of a Christian organization.

We all attend rallies and games.

Freshmen are required to do a certain amount of work on the campus and athletic field.

Willamette students are good sports in all intercollegiate contests.

The library is a place for study.

No applause after "Farewell Willamette."

Uphold the Honor Code.

Remember that Willamette has many traditions sacred to our University, and we are depending upon you to preserve and cherish these traditions. A good Freshman will obey them.

### STUDENT PURPOSE

We unite in the desire to realize full and creative life through a growing knowledge of God.

We determine to make this life possible for all people.

In this task we seek to understand Jesus and to follow Him.



### TIPS TO FRESHMEN

Your first year is one of preparation for the remaining three. Choose your course of study carefully, and having chosen, work it hard. Do your work daily. It is easier to keep up than to catch up.

Do not be afraid to cultivate your instructors' acquaintance. They are a fine bunch of fellows. The opportunity to know earnest students is one of their chief delights, and the advantage to you may be inestimable.

Do not let the turmoil of the first week disturb your equilibrium too violently. Take a reasonable share of social life. Play is an essential part of normal development.

Keep your eye on your studies. They merit your consideration.

The University's courtesy at athletic contests is above reproach. Do your part to keep it so.

Remember that the churches of Salem offer something that the University cannot give to your life.

Forget that you came from any particular high school and keep quiet about your prep school records. One does not wear high school pins, rings, or emblems.

A good Freshman will stand and remove his cap when the "Alma Mater" is being sung or played.

He will wear his cap with proper spirit.

A courteous Freshman will follow the walks on the campus.

It is a good principle to write to the folks at home at least once a week.

Students' mail addressed to Willamette University is placed in the alphabetical mail boxes on the first floor of Eaton Hall.

## WHO'S WHO AT W. U.

### A. S. W. U. Officers

President.....	Brongwyn Williams
First Vice-President.....	Helen Benner
Second Vice-President.....	Dwight Aden
Secretary.....	Esther Black
Wallulah Editor.....	Alice Speck
Wallulah Manager.....	Ely Swisher
Collegian Editor.....	Lillian Graham
Collegian Manager.....	Ty Gillespie
General Manager.....	Lestle Sparks

### Senior Class

President .....	John Ross
Vice-President.....	Esther Gibbard
Secretary.....	Hortense Taylor
Treasurer.....	Ewald Franz

### Junior Class

President.....	Guy Heimsoth
Vice-President .....	Rachel Yocum
Secretary .....	Marguerite Clark
Treasurer .....	Harrison Winston

### Sophomore Class

President.....	Everett Gary
Vice-President .....	Ina Bennett
Secretary.....	Lois Burton
Treasurer .....	Douglas Sharp

-:-

-:-

-:-

## ORGANIZATIONS

### Athletic:

#### "W" Club

The "W" Club is composed of all students who have won their letter in varsity athletics on the campus, and encourages a spirit of good sportsmanship at all intercollegiate contests.

#### Women's Athletic Association

The Women's Athletic Association is composed of women who have earned their letter in inter-class or varsity athletic contests. The organization sponsors a number of hikes during the school year, and actively promotes interest in inter-class sports.

#### Officers

President.....	Esther Black
Vice-President .....	Rachel Yocum
Secretary.....	Lucille Brainard

#### Cubs

The Cubs is an organization of Freshmen and Sophomores, whose duty it is to usher at games, care for the interests of visiting teams, and enforce traditions. They are recognized as officials at all games.

(Officers will be elected this fall.)

#### Athletic Board

The Athletic Board, composed of members from the Board of Trustees, faculty, coaching staff, and students, acts as an advisory committee in regard to policy, finance, etc.

#### Awards Committee

The Awards Committee is composed of members from the faculty, coaching staff, and student body, and decides upon the distribution of awards, upon the recommendation of the coaches.

#### Athletic Managers

Varsity sports managers are appointed, and class managers elected, and these students arrange the various inter-class and varsity sports.

**Honorary:****Alpha Kappa Nu**

Alpha Kappa Nu, established on the Willamette campus in 1920, is a local honorary scholastic fraternity, having for its purpose the promotion of high scholarship. Its membership is limited to ten per cent of each Senior class, and selection of members is made just preceding Commencement each year.

**Pi Gamma Mu**

Oregon Alpha chapter of Pi Gamma Mu was installed on the Willamette campus in 1924. This national social fraternity aims to develop in the college students an interest in the solution of human problems by scientific methods. Seniors having completed twenty semester hours work in this field, with an average grade of at least 85 per cent therein, are eligible to membership.

**Cap and Gown**

Each spring, five Junior girls are elected to Cap and Gown. They are selected for their outstanding qualities of character, leadership, personality, and scholarship. It is the desire of the organization to maintain such high quality during the next five years that they will be eligible to inaugurate "Mortar Board," a national honorary for Senior women.

**Tau Kappa Alpha**

Tau Kappa Alpha, national forensic fraternity, established at Willamette in 1926. The purpose of this organization is to promote interest in forensics, and in the years since its installation here it has proven to be the foundation upon which all forensic activities are based.

**Officers**

President .....	George McCleod
Secretary-Treasurer.....	Margaret Howard

### Theta Alpha Phi

Since its instaliation on the campus in 1920, the Oregon Alpha chapter of Theta Alpha Phi, national dramatic fraternity, has promoted interest in dramatics to a large degree. The fraternity presents from two to four plays each year, offering a medium for any who are interested to take part. Membership is limited to those who show real ability in this field.

#### Officers

President .....	Dell Ramsdell
Vice-President .....	Dorothy Durkee
Secretary .....	Betty Boylan
Treasurer .....	Professor Gatke

### Delta Theta Phi

The Wolverton Senate of Delta Theta Phi, national legal fraternity, was established on the Willamette campus in 1928. It is coming to be an organization of great strength in the Law School. The honor of having the Law School of Willamette recognized in this manner is felt to be a big step forward for the University.

#### Officers

Dean .....	Ray Rhoten
Tribune .....	Ray McKey
Vice-Dean .....	Arlo Cornel
Master of the Ritual .....	Chris Schnieder
Master of the Roles .....	Carol Addison
Master of the Exchequer .....	Max Tigart

### Blue Key

The Blue Key fraternity, a national service fraternity, established a chapter at Willamette in 1926. It is composed of upperclassmen, and each year members are elected from the Sophomore class. The fraternity endeavors to render service to the campus in every field of activity.

#### Officers

President .....	Galen Dean
Vice-President .....	Kenneth Manning
Secretary .....	George McCleod
Musical:	



**Musical:****Women's Glee Club**

Tryouts for membership in the Women's Glee Club are held soon after the opening of school in the fall. The club gives a home concert, and, during spring vacation takes a trip. The members are active in all musical activities on the campus.

**Men's Glee Club**

Membership in the Men's Glee Club is determined by tryouts, and the organization makes an extended tour between semesters. The Varsity Men's Quartette takes a prominent part in the festivities of Junior Week End.

**Philharmonic Choir**

The Philharmonic Choir is composed of the united membership of both the Women's Glee and the Men's Glee Clubs. This group gives a concert in the spring in cooperation with the Salem Philharmonic Symphony Orchestra, and at some time during the year, presents a light opera. This group is well-known and well recognized, and many of them sing in the First Methodist Church choir.

**University Band**

The Willamette University Band was organized in 1930 for the prime purpose of creating pep and spirit at athletic contests. This year Wesley Roeder, formerly band and orchestra instructor at the Salem Senior High School, will be the instructor.

**University Orchestra**

The Orchestra was organized in order to bring out and develop the musical talent of the University.

### Willamette University Mixed Quartette

This group has been making a great many appearances here in Salem, and also presents a monthly Vesper hour over KEX in Portland. The Quartette will also be remembered for their presentation of the Plumber's Opera last year. The members are: Earle Potter, tenor; Kathryn Smullin, soprano; Harriet Adams, alto; and Richard Smart, basso.

### Willamette University String Trio

In augmentation of the musical opportunities offered by our School of Music, the university maintains a String Trio which is often heard as guest artist at our student recitals.

Religious:

### GO TO CHURCH

History records man as a being who worships. Among every people of whom we have record, signs of worship have been discovered. Let us develop and direct this instinct.

Today, while attending college, most of us are away from home; yet the deep wish in the heart of every father and mother is that we remain true to the teachings of our youth. By home training and tradition we have some knowledge of the purposes and claims of religion. We believe that in the Bible man finds a standard whereby to guide his life. Religion in its broad sense is life lived in all its relationships. Religion is the ballast which steadies man's life. Religion is friendship with God.

-:- -:- -:-



**Y. W. C. A.****Officers**

President .....	Helen Knight
Vice-President .....	Helen Purvine
Secretary .....	Jean Hollingsworth
Treasurer .....	Irma Oehler
Social .....	Julia Johnson
Social Service .....	Helen Burdick
Program .....	Esther Gibbard
Girl Reserve .....	Lois Underwood
Worship .....	Harriet Burdette
Finance .....	Eleanor Trindle
Publicity .....	Barbara Crookham

**Y. M. C. A.****Officers**

President .....	George Self
Vice-President .....	Eugene Hibbard
Secretary .....	Don Marcy
Treasurer .....	Bill McKinney
Program .....	Harlan Sheldon

**Willamette Wesleyans**

The national organization of which the Willamette Wesleyans is a part has for its purpose the promotion of interest in missionary work, and is composed of students who plan to give full time Christian service in the home or foreign field. The Willamette group holds weekly meetings, at which time lectures and discussions of interest are enjoyed.

**Officers**

President .....	Oliver deVries
Vice-President .....	James Pyke
Secretary .....	Beatrice Gillette
Treasurer .....	Harvey deVries
Social Chairman .....	Katharine Sharf

## SOCIETIES

### Daleth Teth Gimel

Daleth Teth Gimel is a chapter of the national organization of Daleth Teth Gimel, and was organized on the campus in the fall of 1928. Both sorority and non-sorority girls are members. The purpose of the society is to provide an opportunity for every girl to develop personality fully through social activities, and to promote a spirit of democracy among the girls on the campus.

#### Officers

President .....	Agnes Corthell
First Vice-President.....	Ruth West
Second Vice-President.....	Nola Clark
Treasurer .....	Jane Bellinger
General Secretary.....	May Ringo
Scrapbook Secretary.....	Roberta Smith
Historian.....	Myrtle Wettlaufer

### International Club

International Club, as the name denotes, is made up of students who have lived in foreign countries, and American students. The object of this organization is to create a feeling of international friendship and understanding. The club's motto is "International Good Will."

Membership is restricted to sixty per cent foreign and forty per cent American and is by invitation.

#### Officers

President.....	Laurance Burdette
Vice-President .....	Ina Bennett
Secretary-Treasurer .....	Suzie Fukuda

### Coffee House

Coffee House, the only campus creative literary society, has a membership selected from students interested in literature from a creative viewpoint. It meets bi-weekly to read and discuss the productions of its members and has as its purpose the promotion of constructive criticism and creative writing among students. Membership is by invitation.

#### Officers

President.....	Louise Anderson
Secretary-Treasurer.....	Una Lee

### The Little Theatre Guild

The Little Theatre Guild, organized on the campus two years ago, is primarily an organization to develop dramatic talent among the students. It presents several plays and skits throughout the year, thus offering dramatic opportunities for students who are interested in costuming, play-writing, make-up, and scenery.

Entrance into the society, the requirements of which include ability in any of the four fields mentioned, is determined by tryouts held annually at the first of each scholastic year.

(Officers will be elected this fall.)

### Science Club

Students who are interested in study and research in the field of the natural sciences compose the Science Club. Interesting and unique experiments are conducted, and the group entertains at student chapel once or twice during the year.

#### Officers

President .....	Frank Thomas
Vice-President .....	William Voss
Secretary-Treasurer.....	Harry Mosher

### Classical Club

Students taking the classics are eligible to membership in the Classical Club, whose purpose is to further interest in and appreciation of the Greeks and Romans and their languages.

#### Officers

President.....	Esther Callison
Vice-President .....	Nola Clark
Secretary .....	Allan Stevens
Program Chairman.....	Charlotte Eyre

### Paint Spots

The Paint Spots was organized to promote interest in art on the Willamette campus. Any student interested in the group and wishing to develop his creative ability may become a member by submitting work to be voted upon by the members.

(Officers will be elected this fall.)

### **The French Club**

The French Club is a comparatively new organization upon the Willamette campus, having been organized in the fall of 1930. It meets every other week at Willamette Lodge, and is conducted under the very efficient leadership of Madam Vazakas. French games are played, riddles and axioms are presented in interesting manners, and progressive stories with amusing and startling details are told in French.

The club has no definite membership, but is open to all those who feel interested enough to attend. No English is spoken at the fortnightly meetings, as the purpose of the organization is to aid pupils to become fluent and precise in their use of the French language.

### **Shakespeare Club**

The Shakespeare Club is composed of students who take an especial interest in the works of Shakespeare from a literary, dramatic, or musical standpoint. Dr. Kohler is the founder and adviser of the group.

(Officers will be elected this fall.)

## **FORENSICS**

### **Forensic Council**

The Forensic Council is composed of three members of the debate squad who have won the Bar "W." It has charge of all forensic activities and promotes interest in public speaking on the campus.

### **Debate**

Willamette now holds an outstanding position in the Pacific Coast Forensic League, due to her excellent work in debate. Both the men's and women's teams took rather extensive tours during the past few years.

Interclass debate is an activity in which numerous students can and do participate.

### **Oratory**

Willamette was represented in a number of oratorical contests last year and scored high in all of them. We won both first prizes in the "Old Line" contests, Constance Smart taking first for the women and George McLeod for the men.

## PUBLICATIONS

### The Willamette Collegian

The Collegian is the official college paper and is published weekly by the student body. Staff members who have served one year faithfully, and who have done work of real merit are awarded a gold old English "C."

It is customary and expected that Willamette students will patronize Collegian advertisers.

Collegian Editor.....Lillian Graham

Collegian Manager.....Ty Gillespie

### Wallulah

The Wallulah is the annual year book, published by the student body, and appearing June first. Staff members who are recommended by the manager or the editor of the Wallulah as having done work of genuine merit are awarded with a gold old English "W," if such recommendations are approved by the awards committee.

Wallulah Editor.....Alice Speck

Wallulah Manager.....Ely Swisher

### Spring Social Calendar

The Spring Social Calendar is published as a supplement to the Wallulah by its staff. It is commonly known as the "fussers budget," giving everyone's name, telephone number, and address, as well as a list of all spring college functions.

### Student Handbook

The Student Handbook is published annually by the A. S. W. U. Its purpose is to acquaint new students with the University and give useful information concerning student activities.

### Willamette Song Book

The Willamette Song Book includes all the Willamette songs up to date. Every student should own a copy.



### PRIZES

At Commencement time of each year a number of prizes are awarded to those students in the University who have shown ability in certain fields of endeavor.

#### Albert Prize

Mr. Jos. H. Albert, of Salem, awards \$25 to the student having a record for faithful study and scholarship not below the average, who, during the school year, opportunities considered, has made the greatest progress toward the ideal in character, service, and wholesome influence.

Keith Jones

#### The Colonel Willis Prize

Col. Percy Willis, '95, of Portland, offers a prize of \$25 "to the student who throughout the school year has done the most real good to fellow students and the University by deeds of kindness and genuine helpfulness, coupled with steadfast devotion to high ideals and upright character."

Lowell Ladd Eddy

#### Keyes Prize

Hon. Walter E. Keyes, of Salem, offers two prizes of \$15 and \$10 to those who win first and second honors in oratory.

First prize.....Lowell Eddy

Second prize.....Randall Kester

#### Outstanding Athletic Trophies

A plaque is awarded by Mr. J. H. Booth of Roseburg to the Senior who, in addition to maintaining high scholarship, has exerted a fine moral influence and has achieved the best standing in athletics. In addition to the personal trophy, the student's name is engraved on a large loving cup held as a permanent trophy at the University.

Edward Frantz

To the Senior girl whose achievement in personality, sportsmanship, leadership, scholarship, and assistance to others in athletics is deemed greatest, and who is herself outstanding in athletics, a silver loving cup is given.

Seiko Watanabe

### The Class of 1919 Scholarship Prize

An award of \$10 by the class of 1919 to the Senior who in scholarship has the most outstanding record.

Joseph Eckles Scott

### Bancroft-Whitney Prize

The Bancroft-Whitney Company gives a set of Jones' Commentaries on Evidence, six volumes, to the Senior doing the most commendable work in trial practice.

Wallace Douglas

## SENIOR SCHOLARS 1935-1936

These appointments are made at the close of the junior year to hold throughout the senior year. The duties of the senior scholar are to make special studies of the teaching methods, examine and criticise papers, and assist in the laboratories. Selection is based on scholarship and fitness to profit by the appointment.

Biology .....	Lois Underwood
Chemistry .....	Albert Hughes
English Composition .....	Florence DuRetfè
English Literature .....	Louise Anderson
French .....	Helen Knight
German .....	Ruth Johnson and Winifred Gardner
History .....	Doris Turrell
Home Economics .....	Doris Unruh
Mathematics .....	Beth DeLapp
Music .....	Hortense Taylor
Physical Education .....	
.....	Esther Black and Kenneth Manning
Physics .....	Frank deLespinasse
Political Science .....	Burton Lemmon
Religion .....	Harriett Burdette
Speech .....	Dorothy Durkee
Sociology .....	Lawrence Burdette
Zoology .....	Oliver Draper



## LAUSANNE HALL REGULATIONS

No resident of the Lausanne Hall or of any Sorority House shall be out of the Hall or House after 7:30 except for college engagements and for study at the libraries, or when permission has been granted by the Dean of Women or House Mother. Upper class girls may have one extra night out each week.

On Friday and Saturday nights girls must be in at 11:10 P. M. On Sunday night the hour is 10:00 P. M.

On leaving town, permission having been previously secured from the Dean of Women or House Mother, all girls shall register the time of the departure, their address while away, and the time of return.

Residents wishing to spend the night outside the Hall or House shall first obtain permission from the Dean of Women or House Mother.

Residents of Hall or Houses shall not accept invitations to evening social functions or entertainments, on week nights, without permission from the Dean of Women or House Mother; but attendance at the following regular meetings is understood as approved:

Clubs and societies connected with the various departments of academic work in the college; evening classes; literary societies; public oratorical contests; college debates; public college lecture; religious services; athletic events; entertainments given by permission of the authorities of the college for college classes or for the entire student body.

Should these functions hold until 9:40 on week nights, 10:50 on Friday night, and 10:50 on Saturday nights, girls must be in twenty minutes after the first girl returns.

### Lausanne Hall Officers

President .....	Agnes Corthell
Vice-President .....	Marjorie Thorne
Secretary-Treasurer.....	Helen Marcy
Song Leader.....	Dorothy Dingle

## SORORITIES

### Alpha Phi Alpha, 1923

750 North Summer Street, Phone 8911

#### Officers

President.....	Helen Knight
Vice-President.....	Ruth Johnson
Manager.....	Margaret Howerton
Secretary.....	Josephine Hull

### Beta Chi, 1919

1445 State Street, Phone 8760

#### Officers

President.....	Esther Gibbard
Vice-President.....	Hortense Taylor
Recording Secretary.....	Jeryme Upston
Corresponding Secretary.....	Charlotte Schneller
Treasurer.....	Margaret Savage
Sergeant-at-Arms.....	Frances Ellis
Manager.....	Lucille Brainard

### Delta Phi, 1920

1610 Court Street, Phone 8730

#### Officers

President.....	Winifred Gardiner
First Vice-President.....	Doris Unruh
Second Vice-President.....	Margaret Hogg
Recording Secretary.....	Lois Burton
Corresponding Secretary.....	Barbara Crookham
House Manager.....	Helen Carlson

## INTER-SORORITY RUSHING RULES

### Summer Rushing Rules

1. Informal rushing, during the summer, may include 4 house girls and 4 rushees.
2. There may be only two formal rush functions in any town, one being an inter-sorority dance in Salem.
3. A rushee may attend only two formal functions. House members may go to any to help with a rush party.
4. Violations of summer rushing rules shall be punishable in the same manner as violations of fall rushing rules.
5. It is a University ruling that the sorority houses shall not be used for rushing purposes during the summer.

### Fall Rushing Rules, 1935

The sorority rushing season for the year 1935-1936 shall be from October 28 to November 10, inclusive.

#### I

Personal rushing shall begin October 28 through October 31.

- (a) Personal rushing shall not include any expenditure of funds whatsoever by sorority girls; that includes food, gifts, and games. Home rushing is forbidden. There shall be no entertaining of rushees at town houses. Girls, may, however, be entertained at the sorority house at any time during the days of personal rushing.
- (b) Throughout all rushing there is to be no conversation about other houses or concerning personal house affairs.
- (c) Alumnae are put under the same rules as active sorority girls.
- (d) In personal rushing sorority girls may enter the hall from 7:00-9:00 P. M.
- (e) There shall be no rushing by men or non-sorority women. This includes mothers or sisters.
- (f) All personal rushing shall be from 7:00-9:00 P. M.
- (g) Personal rush days for the three houses shall be as follows:  
Tuesday, October 29.....Alpha Phi Alpha  
Wednesday, October 30.....Beta Chi  
Thursday, October 31.....Delta Phi

#### II

Inter-sorority at home shall be held Monday, October 28, for all Freshmen girls. No rushing shall be done before this time.

#### III

House rushing shall begin November 1 through November 4, omitting Sunday, November 3.

- (a) No slumber parties shall be given.
- (b) No personal rushing shall be done.
  - 1. This includes sending letters, gifts, or visiting hall, etc.

- (c) A date book shall be issued by inter-sorority council and dates shall be checked, and no invitations shall be issued.
- (d) A schedule of dates shall be agreed upon.
- (e) Sororities shall not call for rushees.
- (f) No favors shall be used at any informal rush affairs.
- (g) Buffet dinner shall be held from 4:00-7:00 P. M., November 1 to November 4, inclusive. The succession of dinners for 1935-1936 shall be:
 

Friday.....	Beta Chi
Saturday .....	Delta Phi
Monday.....	Alpha Phi Alpha

## IV

Formal rush season shall be from November 5 to November 10, inclusive.

- (a) Formal party shall be a dinner party to be held from 5:00-8:00 P. M. The succession of parties for 1935-1946 shall be:
 

Tuesday.....	Delta Phi
Wednesday.....	Alpha Phi Alpha
Thursday.....	Beta Chi
- (b) The formal rush parties shall be limited to a certain fixed sum. For the year 1935-1936 it shall not exceed \$50.00. Only formal decorations shall be used.
- (c) An itemized account of party expenses is to be turned in to the Dean of Women by November 16.

## V

There shall be a system of preferential bidding.

- (a) New girls shall hand in their choices of sororities by 6:00 P. M., November 9, to the Dean of Women.
- (b) The sororities shall have their bids in at the office of the Dean of Women by 6:00 P. M., November 9.
- (c) The girls shall then receive their bids by 9:00 P. M. Pledge services shall be held November 10, attendance at church following.

## VI

Sororities may pledge during the first six weeks any girl who has been on the campus a previous semester.

- (a) A preferential informal dinner shall be held Thursday night, September 26, from 5:00-8:00 P. M.
- (b) Girls shall hand in their choices of sororities by 6:00 P. M., September 28, to the Dean of Women.
- (c) The sororities shall have their bids in at the office of the Dean of Women by 6:00 P. M., September 28.
- (d) Pledge services shall be held September 29, attendance at church following.

## VII

New girls of Freshman, Sophomore, Junior, or Senior classes shall not be pledged until formal pledging of rush week.

- (a) No girl taking less than 12 hours shall be pledged.

## VIII

No bids shall be promised to any girl at any time. Bids not accepted November 9, will be referred to second semester rushing.

## IX

No personal expenditures for favors.

## X

Any sorority violating the above rules shall be subjected to forfeit in the following manner: For any violation from November 1 to November 8, the formal dinner shall be forfeited.

## XI

Silence shall last from November 8 to November 10, inclusive.

**Second Semester Rushing Rules**

## I

Second semester rushing shall take place second week.

- (a) It shall last from Monday at 4:00 P. M. until Friday at 9:30 P. M.
- (b) There shall be no rushing during study hours.

## II

Personal rushing shall be Monday from 7:00



to 9:00 and Friday from 7:00 to 9:00

- (a) Notes for personal rushing on Monday shall be sent to girls on Friday. Notes for Friday shall be put in mail boxes in Eaton Hall Friday morning. Reply by phone for Friday and in writing for Monday.

### III

Each house shall have a tea and a dinner.

- (a) Teas shall last from 4:15 to 5:15; dinners 5:30 to 7:30.  
 (b) Invitations shall be issued by phone or personally.

Tuesday—

Tea.....Beta Chi

Dinner.....Delta Phi

Wednesday—

Tea.....Alpha Phi Alpha

Dinner.....Beta Chi

Thursday—

Tea.....Delta Phi

Dinner.....Alpha Phi Alpha

### IV

Bids and preferences shall be in by 6:00 P. M. Saturday to the Dean of Women and they shall be delivered by one girl from each house.

### V

There shall be silence Saturday. Pledging shall be Sunday morning as in fall rushing.

### VI

Penalties for failure to comply with these rules to be fixed before rushing begins.

## FRATERNITIES

### Alpha Psi Delta, 1920

895 Chemeketa Street, Phone 6588

#### Officers

President.....David Johnson

Vice-President.....Delmar Ramsdell

Secretary.....Everett Gary

Manager.....Warner Crow



**Kappa Gamma Rho, 1921**

316 North Church Street, Phone 8882

**Officers**

President.....Jack Simpson  
Vice-President.....Don Burch  
Manager.....Frank Pemberton

**Sigma Tau, 1919**

920 Oak Street, Phone 8718

**Officers**

President.....John Ross  
Vice-President.....Ross Gladden  
Secretary.....Eli Swisher  
Manager.....Bill Miller

**OFFICIAL INTER-FRATERNITY RUSHING  
RULES**

**Procedure:** Subsequent to registration, at a time set by the Inter-Fraternity Council, each new-registering man shall be given the opportunity to signify his choice of fraternities, which shall be written and filed with the Dean's office. Each fraternity shall present to the Dean a list of new men whom it wishes to pledge. Official notification shall issue from the Dean's office to each fraternity respectively of the names which correspond to the list it has handed in.

**Time of Pledging:** No man shall be offered the opportunity to pledge any fraternity until the time of pledging set by the Inter-Fraternity Council and until he shall have completed registration. Completion of registration means the making of final arrangements with the business office in regard to the payment of tuition. Any violation of this provision on the part of any fraternity shall mean the forfeiture of the right to pledge the man in question for a period of thirty days.

Pledge day for the Fall Semester, 1935, shall be Wednesday, September 18. Fraternity lists must be in the Dean's office by four o'clock in the afternoon.



**COACH KEENE**

**FOOTBALL SCHEDULE 1935**

- Sept. 21—San Jose State Teachers at Salem,  
night game.
- Sept. 28—Oregon State College at Corvallis.
- Oct. 5—Washington State College at Pullman,  
Washington.
- Oct. 12—Open.
- Oct. 19—College of Idaho at Salem, night game.
- Oct. 25—College of Puget Sound at Tacoma,  
night game.
- Nov. 2—Open.
- Nov. 9—Pacific University at Salem, night  
game.
- Nov. 16—Open.
- Nov. 28—Whitman at Walla Walla.

## ATHLETICS

Intercollegiate athletics are maintained under the personal supervision of the Director of Athletics and under the jurisdiction of the Athletic Council.

Willamette belongs to the Northwest Conference, composed of the following schools: Whitman College, College of Idaho, College of Puget Sound, Pacific University, and Linfield College. It is the purpose of this Conference, as far as possible, to foster participation by all members of the Conference in contests of football, basketball, baseball, tennis, and track.

### Intramural Activities

Intramural activities are maintained under the personal supervision of the Director of Physical Education and the chairman of the Interclass Rivalry Committee.

The program extends over the entire school year, and is composed of the following activities: cross country, scrimmage ball, basketball, boxing, wrestling, physical ability tests, track, baseball, and tennis.

Students taking Physical Education for credit must pass the Physical Ability Tests before they are permitted to substitute an intramural activity for the regular class work.

### Gymnasium Requirements

Physical Education is required of all students throughout the Freshman and Sophomore years.

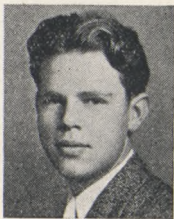
The regulation uniform for the Physical Education classes consists of rubber-soled shoes, supporter, sleeveless jersey, pants, and a heavy sweater or sweatshirt.

Locker should be locked at all times. Equipment that is left out will be picked up.

-:-

-:-

-:-

**WILLIAM HANZEN****Yell King****VARSITY YELLS****Spell Bearcats No. 1****B—E—A—R—C—A—T—S..****Rah!****B-E-A-R-C-A-T-S****Rah!****BEARCATS****(Spelled)****Rah Rah Rah Rah—BEARCATS!****(Yelled)****Spell Bearcats No. 2****Be-e-ar-Cats! (slow)****Be-e-ar-Cats! (faster)****Bearcats, Bearcats (spelled fast and low)****Be-e-ar-Cats! (loud)****Be-e-ar-Cats! (louder)****BEARCATS!! (yelled)****Team Yell****T-E-A-M—TEAM!****Fight—Fight—Fight . . . Team!**

**Y-E-A—W. U.**

Y-e-a—W. U.

Y-e-a—W. U.

Y-e-a—W. U.

Fight 'em! Fight 'em! Fight 'em!

**Go Get 'Em Yell**

Go get 'em, Bearcats, Go get 'em  
(Slowly, softly)

Go Get 'Em, Bearcats, Go Get 'Em  
(Faster, louder)

**GO GET 'EM—BEARCATS—GO GET 'EM**  
Willamette!

**Locomotive**

Rah, Rah, Rah, Rah, W. U., W. U.

Rah, Rah, Rah, Rah, W. U., W. U.

Rah, Rah, Rah, Rah, W. U., W. U.

Rah, Rah, Rah, Rah, WILLAMETTE!

(Fast and loud)

**Skyrocket**

S-s-s-s-s-s-s-s-s (rise on whistle) s-s—BOOM!

A-a-a-a-ah . . . WILLAMETTE!!!!

**Keene**

He's Keen!

Who's Keen?

SPEC'S KEEN!

**Bearcats**

Hip Hooray! Hip Hooray! Hip Hooray!  
WOWIE!

RAH, RAH, RAH, RAH, BEARCATS!

-:-      -:-      -:-

**ANNA MAY UNRATH****Song Queen****OLD HISTORIC TEMPLE**

There's an old Historic Temple  
Rising grandly through the years;  
Where the oaken-hearted fathers  
Drew their strength for strong careers,  
Down the years its portals open,  
Gather wise ones to its fold;  
Breathes the spirit of the Westland,  
Card'nal emblem 'bossed with gold.  
Spirit of the Golden Westland,  
Breathing through our father's tears;  
Tells the story of the Temple,  
Bids us hope adown the years.  
Sing, oh sing, of old Willamette,  
Sing while hearts are young and true;  
Sea to sea the chorus swelling,  
Dear old school, our W. U.



**I LOVE WILLAMETTE U**

I love Willamette U,  
I love her campus too;  
I love her Profs. so good and true,  
I love her spirit real true blue.  
I love the old mill stream,  
I love to sit and dream;  
I see it all in shadows cool,  
I love our dear old school.

**VICTORY FOR W. U.**

Vict'ry for W. U.  
The bell in the tower rings.  
The battle's done;  
The victory's won;  
Card'nal and Gold are flaming  
Proudly o'er us.  
Here's to the Bearcat Team  
Who carried our colors through!  
Our song shall go  
Till the world will know  
There's a vict'ry for W. U.!

**TRUE TO YOUR SPIRIT**

True to your spirit!  
On brave warriors, to the end;  
Fight till the foe shall fear us,  
Till the enemy's haughty head shall bend.  
On for Willamette,  
Fight the battle as of old,  
Victory the prize shall be  
Of the Cardinal embossed with Gold.

**WILLAMETTE**

There's a school we call Willamette  
That will ever prompt our praise,  
For 'tis there we win our victories  
And there our standards raise.  
It's a school that makes true sportsmen  
And will lasting service give  
To those who dare to do their share  
And fight that she might live.

**Chorus—**

Willamette, Willamette, we're with you to the  
end!  
Willamette, Willamette, our voices gladly blend  
To cheer you, revere you and your undaunted  
fame,  
Oh, Willamette U.,  
We will see you through  
And guard your glorious name!

**FIGHT, BEARCATS, FIGHT**

Fight, Bearcats, fight.  
A victory for W. U.  
The Card'nal and Gold,  
Victorious of old,  
Shall give us a spirit ever new.  
Card'nal courage shows,  
And Gold in our faith so true,  
We shout our war cry now to you—  
Come on and fight, fight, fight,  
Fight, fight, fight!

**FIGHT, WILLAMETTE U**

Fight Willamette U.  
Remember, boys, we're proud of you;  
Let your courage show  
And you will conquer over any other foe,  
LET'S GO, so  
Fight with loyalty, and you will win the victory  
That comes by right to men of might  
So, FIGHT, WILLAMETTE  
FIGHT, WILLAMETTE  
FIGHT.

**FIGHT, SONS OF OLD WILLAMETTE**

Fight, sons of old Willamette,  
Fight 'til the battle's done;  
With a valor ever bold  
For the Card'nal and the Gold  
Fight 'til the vict'ry's won!  
Many hearts are standing by you  
With a spirit ever true;  
Fight with courage never dying  
Fight! Willamette U.

**FIGHT, FIGHT, FIGHT**

Fight, fight, fight, you fearless men of might  
Who face the foe for W. U.  
Fight, fight, fight, with victory in sight  
Your strength and courage will renew.  
Fight, fight, fight, you dauntless Bearcats, fight,  
And as you fall upon the foe  
Let your hearts and strength unite  
To Fight, Fight, Fight.  
The enemy will fear you,  
And the multitude will cheer you  
As you Fight, Fight, Fight. (repeat song)

**WA HOO**

Wa hoo, wa hoo  
Rip zip ba-zoo,  
I yell, I yell for W. U.  
Wa hoo, wa hoo, wa hoo.  
Well, well, well,  
Well, well, well, well,  
Well, well, well, well,  
Wa hoo, etc.

## CANNIBAL KING

A cannibal king with a big nose ring  
Got stuck on a Zulu maid,  
And every night when the moon shone bright  
Across the canal he'd wade  
To hug and kiss this dusky miss  
Out under the big bay tree,  
And when they met they sang a duet  
That sounded like this to me:  
Oh, Jason Lee, socretty boo-ya  
Oh, Poppa Waller, chenickety umba  
Umba-Umba-Um.

## SOPHOMORE LOYALTY SONG—1934

Hail to our Alma Mater,  
To the Card'nal and to the Gold,  
Honor as true as card'nal,  
Loyalty true as gold.  
Hail to the friends we cherish,  
We pledge loyalty to you;  
We'll always share the fellowship  
At our Willamette U.  
Hail to the teams whose valor  
Will bring victory to you;  
Hail to the campus spirit,  
With loyalty made more true.  
Hail to the dauntless courage,  
As bright as the card'nal hue;  
We see it all in college days,  
At our Willamette U.

-:-      -:-      -:-

## FRESHMAN SONG—1933

Come let our laughter mingle  
With silvery sounds of night,  
But list, my sweetheart of Willamette  
While I tell my plight.

## Chorus—

Waken, loved one, heed that bright moonbeam  
Straight as a gleaming dart.  
Waken, dear one, cease your dreaming,  
To you, the delight of my heart,  
I'm calling. Here beneath your window singing  
A song that is ever new;  
Though 'tis the old, old song I'm singing  
It means, sweetheart, I love you!

## SERENADE SONG

When all the campus is sleeping,  
Bathed in a silv'ry glow,  
Lulled to rest by the mill stream,  
Murmuring soft and low.  
Our voices will lift 'neath your window,  
Soft as the palest moonlight;  
Not to disturb your fair slumbers,  
But wish as we bid you good night.

## Chorus—

While you are sleeping, sleeping,  
Under the milky way,  
Wrapt in the shadow of night-time,  
Far from the cares of the day;  
May you be dreaming, dreaming,  
Dreams of a love ever true,  
Love that a lad of Willamette  
Holds in his heart for you.

**DREAM ON**

The stars are softly gleaming  
In the shadows of the night,  
The moon like glowing silver  
Covers all with mellow light,  
The world is resting peaceful  
From the hurry of the day,  
So now beneath your window  
Do I sing to you and say—

**Chorus—**(Boys sing)

Dream on gently, pretty maiden,  
Till the golden heart of you  
Thrills with the night-time's tender beauty,  
And your fairest dreams come true.

(Girls sing)

Dream on, lad of old Willamette  
Till the youthful heart of you  
Thrills with life and love and glory  
And your fairest dreams come true.

**CARDINAL AND GOLD**

Come on, Willamette men, fall into line,  
And raise the Cardinal and Gold to the sky;  
And when our team goes smashing down the  
field—  
Renew their courage with a thundered battle-  
cry.

**Come on to Bearcat Victory**

Stand in back of every warrior bold—  
And with every heart a-light  
We will fight, fight, fight  
At the sign of the Cardinal and Gold.

(Yell)

(Growl)—Bear—Yeow—Cats.

That's the sign of the Cardinal and Gold.



**BEND THE KNEE**

Bend the knee, yes, bend the knee  
To the Cardinal and the Gold;  
Before the Bearcat's fighting power  
Mars himself must even cower  
Rise, we sons of Jason Lee  
We will win the victory,  
So bend, bend the knee to Willamette Varsity.  
Victory; yes, victory to the Cardinal and the Gold;  
Then fearful foes will bite the dust,  
For win we will, for win we must.  
Onward, then to mastery,  
This our conquering song shall be;  
So bend, bend the knee to Willamette Varsity.

**QUEEN OF THE WEST**

The East may love old Harvard,  
The North love old Cornell;  
But the school of fame, whose noble name  
Forever shall excel  
Stands proudly in the West land,  
Where friends are staunch and true;  
We love our dear old college,  
So here's to W. U.!

**Chorus—**

Willamette, to thee we will be true,  
Willamette, we'll ever fight for you,  
We pledge our loyalty,  
Our homage pay to thee.  
Pride of all the West, you are the best,  
Willamette, our hearts we pledge anew,  
Willamette, our fealty to you,  
Faithful we will be  
With staunch fidelity  
Willamette, queen of all!

-:-

-:-

-:-

GOOD LAUNDERING  
GOOD DRY CLEANING  
PROMPT SERVICE

**SALEM LAUNDRY CO.**

(Wieder's)

Phone 9125

263 S. High St.

---

**STUDENTS SUPPLIES . . . .**

**"Close to the Campus"**

**NEEDHAM'S BOOK STORE**

465 State St.

Phone 5802

---

**CORSAGE HEADQUARTERS**

**"FROSTY" OLSON**

**Florist**

Court and High Sts.

Phone 7166

---

**POMEROY & KEENE**

Official Willamette

**JEWELERS**

Manufacturers of

**College and Fraternity Jewelry**

379 State Street

Phone 7463

**THE SPA**  
Pleasant, Refined  
Surroundings  
**Eighteen Private Booths**

---

**PROGRAMS  
ANNOUNCEMENTS  
INVITATIONS  
CARDS**

**Unruh-Knapp Printing Co.**  
U. S. National Bank Bldg. Phone 3522

---

**Capital Business College**

An Old Established Business School with  
Modern Courses of Study

**Full Courses or Special Subjects**  
Open All the Year

383 N. HIGH ST.

PHONE 5987

---

**BETTER FOODS  
BETTER PRICES  
BETTER SERVICE**  
That's

**Pade's Grocery and Market**  
1244 State St. Phone 9135

# Miller Merchantile Company Inc.

Salem's Leading Department  
Store

Corner Court and Liberty Streets

---

## THE KLASIC

"A Kodak Shop"

GREETING CARDS  
PICTURE FRAMES

Next to the Capitol Theatre

# **HAZEL DELL DAIRY**

**Awarded Gold Medal Diploma  
For Pasteurized Milk**

**AT**

## **DAIRY PRODUCTS SHOW**

**Pacific International Livestock  
Exposition, Portland**

**Phone 9622**

**1260 State St.**

---

## **FOR PARTIES SERVE**

**Hillman's**

**DE LUXE CAKES**

**and**

**Hillman's**

**MASTER BREAD**

**Made in Salem**

**CHERRY CITY BAKING CO.**



---

**WILES DRUG STORE**

**Phone 8792**

Court and High Streets

---

**QUALITY SHOES**

At Popular Prices

**RISE'S BOOTERY**

**Exclusive Florsheim Dealers**

129 N. Commercial Street

---

**GEO. E. ALLEN**

**HARDWARE**

**Norge Refrigerators**

**Plumbing Paint**

**Housewares**

236 N. Commercial St.

Phone 4610

---

**CLIFF PARKER, INC.**

**SPORTING GOODS**

372 State Street

Phone 6042

**Everything to Help Your Game**

**TENNIS — GOLF — BASEBALL**

**TRACK — SWIMMING**

**HUNTING — FISHING**

Whether or Not You Eat, Meet at  
**THE GREENWOOD  
LUNCH AND FOUNTAIN**

1230 State St. We Deliver Phone 7613

**LARMER TRANSFER**  
**Complete Transfer and  
Fuel Service**

Phone 3131

889 N. Liberty St.

**COEDS!**

Whatever the occasion—you can  
always find the appropriate thing  
in becoming style at the

**SMART SHOP**

115 N. Liberty Street

**MATS AND MATTRESSES**

Built to Order

**Capital Bedding Company**

Repair Work Done at Reasonable Prices  
3030 N. Pacific Highway

**IMPERIAL FURNITURE CO., Inc.**

**Complete Furniture  
Supplies**

467 Court Street

Salem

**PANTORIUM CLEANERS  
& DYERS**

**PHONE 3733**

**We Call and Deliver**

691 N. High Street

Salem

**PARTIES?      BANQUETS?  
REFRESHMENTS?**

**Burt Crary's Catering Service**

Phone 6753

---

**WE WELCOME STUDENT ACCOUNTS**

**LADD & BUSH, BANKERS**

Salem, Oregon

**Commercial Banking**

**Savings Accounts**

**Trust Department**

**Established 1868**

**Corner State and Commercial Streets**

**YOUNG MEN . . . .**

**JAKS-SLAKS**

Jackets and Slacks—both  
Zippered, \$9.75 up

Open 8 A.M. to 5:30 P.M.

**THOS. KAY WOOLEN MILL CO.**

260 S. 12th St., "Near the Campus"

---

**AVOID EYE STRAIN . . .**

Wear Our Special Spectacles  
While Studying . . . .

**MORRIS OPTICAL COMPANY**

Optical Specialists

444 State Street

Phone 5528

---

**BUILDING SUPPLIES — FUEL**

**Gabriel Powder & Supply Co.**

610 N. Capitol Street

Phone 9191

---

**STATE STREET GROCERY  
AND MARKET**

13th and State Streets

PHONE 5679

**Service — Quality — Price**

MEET YOUR FRIENDS AT THE  
**BLUE BIRD**  
CONFECTIONERY  
FOUNTAIN LUNCH

524 State Street

Phone 5978

**HARTMAN BROS., JEWELERS**  
DIAMONDS – WATCHES  
SILVERWARE

Corner State and Liberty

Watch and Jewelry Repairing a Specialty

**PHONE 3165      PHONE 3165**

**CAPITAL CITY LAUNDRY**  
AND DRY CLEANING

1264 Broadway

**NORTH PACIFIC COLLEGE**  
**of Oregon**  
**SCHOOLS OF DENTISTRY**  
**AND PHARMACY**

For Catalog of Information Address  
The Registrar  
N.E. 6th Ave. at Oregon  
Portland Oregon

---

**C. F. BREITHAUPT, FLORIST**

Always the Best in Flowers  
Artistically Arranged

Phone 5904

447 Court St.

---

**Roen's Typewriter Exchange**

**REPAIRS — RENTALS**

420 Court Street

Phone 6773



BE ON YOUR TOES WITH  
**ENERGY !!**

TRY  
**PRODUCER'S MILK**

PHONE 4616

---

**CAPITAL CITY BINDERY**

BOOK BINDING

LOOSE LEAF BINDING

BLANK BOOK MAKING

Phone 8176

461 North Front Street

---

**GRABER BROS.**

**PLUMBING — HEATING**

166 S. Liberty St.

Phone 6594

---

**COBBS & MITCHELL CO.**  
**LUMBER**

**Everything in Building Material**

Phone 7443

349 S. 12th St.

**THOSE FAMOUS  
“Wimpy” Hamburgers and  
Milk Shakes  
HILL’S**

697 N. Capitol Street

---

**The Commercial Book Store**  
Stationery – Books – Student Supplies  
163 N. Commercial Street

---

We Solicit Your Business on the Basis of  
**BEST QUALITY FOODS**

at  
**Lowest Possible Prices**  
**MODEL FOOD MARKET**

275 N. High Street

Phone 4111

---

**That Certain “Young Fellow”  
Smart Appearance Comes**

in

**BROOKS’ SUITS**  
**\$19.50 – \$24.50**

**Complete Men’s Furnishings**  
**BROOKS**

456 State Street

---

**SANITARY SERVICE CO., INC.**

**Prompt and Efficient Service**

169 S. High Street

Phone 8890

---

**CITY ICE WORKS**

also

**Burner Oil and Cold Storage**

1551 Center Street

Phone 3121

---

**BERTELSON & McSHANE**

**Fine Printing**

PHONE 7109

294 Chemeketa Street

Salem, Oregon

---

**FARMER'S HARDWARE**

**We Have What You Need**

204 N. Commercial Street

---

**THE QUELLE**

**Special Lunches – Banquets**

**Confections**

440 State Street

---

**SALEM COLUMBIA MARKET**

**Special Prices to Sororities  
and Fraternities**

260 N. Liberty Street

**MADSEN'S**

**BREAD**

Made by

**SALEM BAKING CO.**

TELEPHONE 7810

---

**WOOLPERT & LEGG  
DRUGS**

Corner Liberty and Court Streets

**Refresh Yourself at Our Fountain**

---

**One of the Largest Selections  
of Smart Clothes in Oregon**

AT

**BISHOP'S**

**The Store for Young Men**

**Style—Values—Always**

A FOOD—Vital as Sunshine

## **SUNFREZE**

protected ICE CREAM

**Cakes and Individual Molds  
For All Occasions**

Ask Your Nearest Sunfreze Dealer

**Western Dairy Products Co.**

PHONE 8101

---

### **Anderson's Sporting Goods**

We Cater to

**TENNIS AND GOLF PLAYERS**

167 N. Commercial St.

Phone 5934

Prescriptions

Kodaks

### **Willett's Capital Drug Store**

**"A Friendly Store"**

Corner of State and Liberty

Toiletries

Perfumes

---

### **MEADOW GROVE DAIRY**

**Grade A Milk and Cream**

Raw and Pasteurized

**RIECK BROS.**

Dial 116 Ask for 85-F-11

## **HOTEL SENATOR**

### **COFFEE SHOP IN CONNECTION**

W. W. CHADWICK, Manager

---

## **HOTEL MARION**

We Cater to

### **BANQUETS AND PARTIES**

E. A. ROLPH, Manager

---

## **NELSON BROS., INC.**

### **SHEET METAL WORK**

**Automatic Gas and Oil Burners**

**Plumbing, Heating, Furnaces  
Roofing, Paint**

355-361 Chemeketa St.

Phone 3810



---

## **THE PORT HOLE**

State at High

**Sea Foods**

**Sandwiches**

---

## **CAPITOL DAIRIES**

**Perfectly Pasteurized**

**Milk and Cream**

PHONE 3175

---

**EVERYTHING IN SWEETS at**

**Anderson's Kandy Kitchen**

135 N. High Street

---

## **QUISENBERRY'S**

**CENTRAL PHARMACY**

**PRESCRIPTIONS**

The Drug Store Complete

410 State Street

Phone 9123

---

## **THE FASHIONETTE**

**Ladies' Garments**

429 Court Street

---

## **STANDLEY & FOLEY**

**General Insurance Agency**

Ladd & Bush Bldg.

Phone 5876

---

**BUY YOUR USED CAR FROM  
THE VALLEY MOTOR CO.**

---

**Trade at the SHYNNE SHOPPE**  
**Shoes: Repaired, Shined, Dyed**

147 N. High Street

PHONE 7000

---

**W. H. BURGHARDT**

**"Insurance on Everything"**

463 Ferry Street

Phone 4663

---

**CHEVROLET**

Has Quality and Attraction

**Doug. McKay Chevrolet Co.**

---

**BUILDING MATERIALS - FUEL**  
**SPAULDING LOGGING CO.**

PHONE 4116

---

**SHIPLEY'S**

**The Store for Women**

145 North Liberty Street

---

**YOU'LL NOT BE SORRY**

**YOU MADE OUR**

**ACQUAINTANCE**

**Complete House Furnishers**

**H. L. STIFF FURNITURE Co.**

# Willamette University

---

Welcomes You  
and  
Offers You  
Opportunities for  
Greater  
Accomplishments  
in  
1935 and 1936

OUR NEW  
LOCATION  
FOR YOUR  
CONVENIENCE

331 ½ State St.  
Room 3



CARDS  
LETTERHEADS  
BOOKLETS  
AND  
SOCIETY PRINTING



KRAPPS and LONG  
PRINTERS

Telephone 8594

# RECITATION SCHEDULE First Semester

	M	T	W	Th.	F
7:45					
8:40					
9:35					
10:30					
11:25	Chapel	Chapel	Chapel	Chapel	Chapel
1:15					
2:10					
3:05					
4:00					

Chapel Seat..... Gym No.....

## Second Semester

	M	T	W	Th.	F
7:45					
8:40					
9:35					
10:30					
11:25	Chapel	Chapel	Chapel	Chapel	Chapel
1:15					
2:10					
3:05					
4:00					

Chapel Seat..... Gym No.....

## CHURCH DIRECTORY

- American Lutheran—Church, between Chemeketa and Center.  
Bethany Reformed—Capitol and Marion.  
Calvary Baptist—High and Ferry.  
Castle Chapel, United Brethren—Nebraska and 17th.  
Christ Evangelical, Lutheran—State, between 17th and 18th.  
Church of Christ—1489 N. Cottage.  
Church of God—1346 N. Church.  
Church of the Nazarene—Center and 13th.  
Court Street Christian—Court and 17th.  
First Baptist—Liberty and Marion.  
First Christian—High and Center.  
First Church of Christ Scientist—Chemeketa and Liberty.  
First Congregational—Liberty and Center.  
First Evangelical—Marion and Summer.  
First German Baptist—Cottage and D.  
First Methodist—State and Church.  
First Presbyterian—Chemeketa and N. Winter.  
First Unitarian—Chemeketa and Cottage.  
First United Brethren—Mission and 12th.  
Highland Friends—Highland and Church.  
Immanuel Baptist—Hazel and Academy.  
Jason Lee Memorial, Methodist—Jefferson and N. Winter.  
Knight Memorial, Congregational—Ferry and 19th.  
Leslie Methodist—Commercial and Myers.  
Market Street Free Methodist—Market and N. Winter.  
Mill Street Methodist—Mill and 15th.  
Seventh Day Adventist—Gaines and 5th.  
South Salem Friends—Commercial and Washington.  
St. John's Lutheran—16th and A.  
St. Joseph's Catholic—Cottage and Chemeketa.  
St. Paul's, Episcopal—Church and Chemeketa.  
St. Vincent de Paul, Catholic—2200 Myrtle.  
West Salem Methodist—State and 3rd.





## INDEX

	Page
Advertising .....	52
A. S. W. U. Greeting.....	12
Athletic Organizations .....	21
Athletics .....	41
Dr. Baxter's Greeting .....	7
Blue Key's Greeting.....	15
Calendar .....	4
Church Directory .....	74
College Calendar .....	5
Customs .....	18
Dean Dahl's Greeting.....	9
Dean Erickson's Greeting.....	8
Dean Schulze's Greeting.....	10
Football Schedule .....	40
Forensics .....	29
Fraternities .....	38
General Manager's Greeting.....	11
Honorary Organizations .....	22
Inter-Fraternity Rushing Rules.....	39
International Club's Greeting.....	16
Inter-Sorority Rushing Rules.....	34
Lausanne Hall Regulations.....	33
Musical Organizations .....	24
Prizes .....	31
Publications .....	30
Recitation Schedule .....	73
Religious Organizations .....	26
Societies .....	27
Songs .....	44
Student Purpose .....	18
Telephone Directory .....	75
Tips to Freshmen.....	19
Traditions .....	17
Varsity Yells .....	42
Who's Who at W. U.....	20
Y. M. C. A. Greeting.....	14
Y. W. C. A. Greeting.....	13

