

WILLAMETTE UNIVERSITY



Student Handbook
1944-1945

Student Handbook

Annual Publication of
THE ASSOCIATED STUDENTS
of
WILLAMETTE UNIVERSITY

Vol. LI
1944-45 Edition

GLADYS CRAWFORD, *Editor*

Name

Address

Chapel Seat..... Phone.....



TABLE OF CONTENTS

| | |
|---------------------------------------|-------|
| College Calendar | 4 |
| Customs | 5 |
| Traditions | 6-7 |
| President G. Herbert Smith | 8-9 |
| Navy V-12 Program | 10-11 |
| ASWU President and Gen. Man. | 12-15 |
| Privileges of a Student Body | |
| Ticket Holder | 16-18 |
| Where to Go on W.U. Campus | 19 |
| What Every W.U. Student Should Know | 20 |
| ASWU Officers | 21-23 |
| Publications and Pub. Officers | 24-27 |
| Map of W.U. and Salem | 28-29 |
| Music | 30 |
| Drama and Forensics | 31 |
| Athletics | 32-33 |
| Men's Housing; Sororities | 34 |
| Sororities | 35 |
| Rushing Rules | 36-38 |
| Women's Housing | 39 |
| Campus Organizations | 40-43 |
| Faculty and Navy Administrators | 44-51 |
| Songs | 52-55 |
| Yells | 56 |

COLLEGE CALENDAR

ACADEMIC YEAR 1944-45

SUMMER SEMESTER, 1944

June 30-July 1, Friday-Saturday—Orientation and Registration

July 3, Monday—Classes begin, 8 a.m.

July 4, Tuesday—Independence Day Convocation, 11 a.m.

October 21, Saturday—Semester ends

FALL SEMESTER, 1944-45

October 27-28, Friday-Saturday—Orientation and Registration

October 30, Monday—Classes begin 8 a.m.

November 11, Saturday—Armistice Day Convocation, 11 a.m.

November 30, Thursday—Thanksgiving Day (Holiday)

December 23, Saturday—Christmas Recess starts, 12 noon

January 2, Tuesday—Christmas Recess ends, 8 a.m.

February 24, Saturday—Semester ends

SPRING SEMESTER, 1945

March 2-3, Friday-Saturday—Orientation and Registration

March 5, Monday—Classes begin 8 a.m.

June 17, Sunday—Baccalaureate Service

June 23, Saturday—Semester ends; Meeting of Board of Trustees

June 24, Sunday—Commencement Exercises, 3:30 p.m.

CUSTOMS

A SMILE and HELLO are expected from every student at all times.

Know the names and ranks of all faculty and navy officers on the campus.

Everyone attends the reception at University House. A good place to get acquainted, so don't let the name "reception" fool you—it's really very informal and lots of fun.

No one but seniors ever inhabits the senior bench.

Rise when the "Old Historic Temple" is sung. Every Willamette student knows the words.

Do not applaud after "Farewell Willamette" which is sung at Senior Chapel.

Frosh enter and leave chapel by front door only.

No one smokes on the campus.

Everybody is present at all student body, class, and platoon meetings.

All students attend all rallies and games.

Freshmen women wear a green ribbon.

Everybody attends all chapels.

Students' mail addressed to Willamette University is placed in the alphabetical mail boxes on the first floor of Eaton Hall.

TRADITIONS

FRESHMAN GLEE—Begun in 1909; held in February. Freshmen challenge three classes in song tournament; members of each class compose words and music: includes senior procession and recession (audience stands), take offs and chants by each class begun by seniors, and the actual contest. The banner is presented to the winning class by Prof. Clark who always makes the occasion interesting. A dance follows. Climax of the evening is the annual serenade of the winning class. Monday sees payment of bets, singing of parodies on the winning song, and the mill-stream plunge of the losing class.

MAY WEEK END—Begun in 1906. Week end beginning Friday noon with Frosh-Soph Tug of War, and the Greased-pole Climb between the same classes. Friday night is the annual play, and Saturday morning is the May Day Breakfast at Chresto. Saturday afternoon sees the coronation of the Queen and the May Pole Dance. Climaxing the week end is the dance Saturday night.

HOMECOMING—First held in 1921. Honors alums of Willamette. Events include alumni banquet, slogan contest and sign contest entered by platoon groups, and the annual football game with Whitman.

VICTORY BELL—Located in tower of Waller Hall. Rung after WU athletic victories, once for each point of Willamette's winning score.

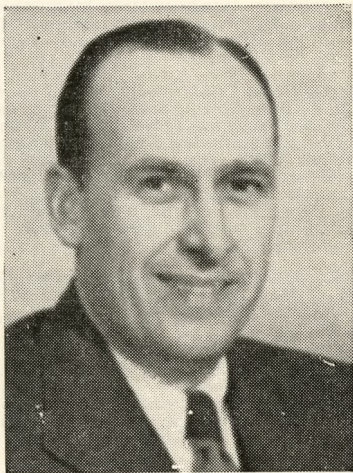
TRADITIONS—(Continued)

CHAPELS—Chapel assemblies Tuesday, Wednesday (religious), Thursday and Friday (student chapel) 11:40-12:10 o'clock. Tuesday and Thursday attendance required of all, Wednesday civilians only required to attend.

KANGAROO COURT—By common consent of other classes Frosh required to attend. Held during Friday chapels. Frosh obey words and wishes of upper classmen.

AWARD DAY—Annual chapel set aside for honors earned by students for participation in various activities during the year. Special features are awarding of scholarships for the coming year, and Scholarship Cup.

INTER-SORORITY SING—Begun 1944. Part of May Day festivities. Contest won by Alpha Chi Omega this year.



DR. G. HERBERT SMITH
President of Willamette University

WELCOME FROM THE PRESIDENT

It is a pleasure to welcome the students just entering Willamette University. During this war, Willamette is maintaining its high tradition of broad cultural education as well as serving the needs of the government in training prospective naval officers.

Willamette University welcomes you to a campus famed for its friendliness. We hope you will enter into the campus spirit from the outset, and that you will find happiness in your associations with the Willamette family.

G. HERBERT SMITH



LIEUTENANT GEORGE C. BLISS

*Commanding Officer of Willamette
V-12 Unit*

As Skipper of the unit heads and directs all activities of the V-12 unit from his office in the Navy Administration building (formerly the law building).

NAVY V-12 PROGRAM

(Naval College Training)

Willamette University's Navy V-12 Program is one of approximately 131 such programs on college campuses in America. Willamette is the site of the only basic undergraduate college program for the Navy in Oregon.

At Willamette, 200 men are assigned to carry on their work in premedics, pre-dentistry, pretheology, and basic work for deck officers, engineering officers, supply corps, and N.R.O.T.C. The curriculum comprises a well-rounded course of study, including English, Languages, History, Psychology, Drawing, the Sciences, and Mathematics. The students in the Navy program are in every sense of the word regular students of Willamette University, participating fully in all phases of college life.



RICHARD WICKS

President, ASWU

As president of the Willamette student body Richard Wicks will direct student government and head the executive committee.

ASWU

The Associated Students of Willamette University is the organized student body of Willamette.

Its governing body is the executive committee, composed of the president, first vice-president, second vice-president, secretary, the editors of the Collegian and the Wallulah, a representative from each class, and a member of the faculty elected by the student body.

Under the constitution, a publications board governs the student publications. Membership on the board consists of the publications manager, the editors of the Collegian and the Wallulah, the student body president, the student body secretary, the professor of Journalism, and the general manager. Publications budgets are subject to approval by the executive committee, as are the budgets of all other activities.

Dues for membership in the ASWU are \$10 a semester and include dues for membership in the class to which each student belongs. Summer of '44, dues were \$6.50, lowest in Willamette's history. Benefits received from S.B. ticket are shown on pages 16-18.



DR. ROBERT E. LANTZ

General Manager of ASWU

Dr. Lantz's duties as general manager are in an advisory capacity, as well as that of handling finances. From his office are obtained student activity tickets, Fusser's Guides, and the Wallulah.

GENERAL MANAGER'S OFFICE

The business office of the ASWU is located on the ground floor of Waller Hall and is under the direction of the general manager. All money payable to the Associated Students is turned over to this office, and all payments are made through the general manager.

Student activity tickets, representing membership in the Associated Students, are distributed through the general manager's office.

The activity ticket entitles the holder to admission to games and entertainment financed through student body funds, the use of student body equipment, and to receipt of all student body publications (except that a copy of the Wallulah is given to those only who have paid dues for two semesters or pay a proportional amount in addition to the dues for one semester).

On pages 16-8 is shown the privileges and benefits to which the holder of an activity ticket is entitled.

HERE'S WHAT YOU GET . . .

For your student body ticket you are entitled to attend all functions and participate in all activities. Only charge made is federal tax. Specifically, this is part of what you may expect.

I. ATHLETICS (Includes Women's and Intramural)

Admission to all games on W.U. campus. Participation in football, baseball, softball, basketball, and track. Participation in or attendance at all tennis and table tennis tournaments.

II. SOCIAL FUNCTIONS

ASWU

All-school affairs are supported by student body money. Many social events make a year at Willamette a thrill for every girl, swell for the fellows.

- a. Major dances with orchestra
- b. Matinee dances
- c. Juke box dances in Eaton Hall
- d. All-school picnics, barbecues and swims

CLASSES

All class functions also are supported by student body money. They may include a dance, picnic, skating party, or swim.

HERE'S WHAT YOU GET—(Continued)

III. PUBLICATIONS

COLLEGIAN

W.U.'s newspaper is published each week, and may be obtained in the Student Body office.

WALLULAH

The year book may be received by presentation of two semesters' student body cards. Contains pictures and write-ups of campus and students.

IV. ACTIVITIES

MUSIC

A Capella Choir

Under Dean Melvin H. Geist. Tryouts held each semester. During normal times, ten-day trips taken throughout Northwest.

Symphony Orchestra

Under direction of Lewis Pankaskie. Will find enjoyment in either participation or listening.

University Band

Maurice Brennen, director. Active at chapels, games.

V. FORENSICS

Opportunity for participation in all speaking contests. Teams travel over Northwest in competition with other universities.

HERE'S WHAT YOU GET—(Continued)**DRAMA**

Free admission to student productions upon payment of federal tax. Participation in plays.

FRESHMAN GLEE

Two tickets upon presentation of student body tickets; also participation.

MAY DAY

Attendance at May Day play, all activities of the weekend.

WHERE TO GO ON WU CAMPUS

BEARCAT CAVERN—GROUND FLOOR, WALLER
(Better known as the 'Cat Cavern). This is the place where both profs and students pop in during free periods and between classes for a snack, cup of coffee, and scuttlebutt. Begun in '42 and expanded in summer of '44 to include a lounge which was built largely by student volunteers.

S.B. OFFICE—GROUND FLOOR, WALLER
Newly created business office of General Manager. Collegians and Wallulaha obtained here.

COLLEGIAN AND WALLULAH OFFICES
(Both on ground floor, Waller)
Collegian retained location, while Wallulah traded places with the bookstore. Offices of editors and staffs, respectively.

BOOKSTORE—GROUND FLOOR, WALLER
With a new location, supplies, and Manager Mrs. Delsia Larson, the W.U. bookstore is open to students from 1:00-5:00 p.m. every day excepting Saturday.

PHOTO DARK ROOM—3RD FLOOR, WALLER
Available to students for developing and printing school shots appropriate for Collegian and Wallulah use.

LITTLE CHAPEL—3RD FLOOR, WALLER
Built by volunteer student labor. The Little Chapel is a place for meetings of all campus religious groups, of which there are 27 denominations.

LITTLE THEATRE—3RD FLOOR, WALLER
Seats approximately 100. May be used for presentation of student productions.

WHAT EVERY WU STUDENT SHOULD KNOW

COMMENCEMENT

Under the Navy V-12 plan there are now three full semesters at Willamette, thus necessitating three commencements each year.

INSTITUTE OF CITIZENSHIP

Willamette University carries on an activity each year which enables high school seniors to be on the campus, attend lectures, and absorb something of college life. W.U. students help to entertain the guests.

CLASS OFFICERS

Each class has the responsibility of electing its own leaders. The Freshmen class has a double responsibility, for not only must one of its members manage Freshman Glee, but its president is obligated to speak at that affair. Officers of all classes are elected by nominations from the floor during the class meetings.

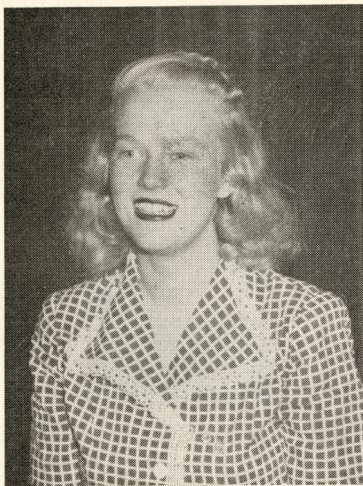
RANKS OF FACULTY

Administrative

President
Deans
 Dean of Liberal
 Arts
 Dean of Music
 Dean of Law
 Dean of Women
 Dean of Men
 Dean of Fresh-
 men

Academic

Associate Professor
Assistant Professor
Instructor



WILMA FROMAN, Alpha Chi Omega

First Vice-President, ASWU

Chief duty of the first vice-president, in addition to serving on the executive committee, is to act as social chairman with responsibility for budgeting the social fund.



EMMA LOU EAST, Pi Beta Phi

Second Vice-President, ASWU

Budgeting of the general fund and administration of all ASWU elections is the specific duty of the second vice-president. She is a member of the executive committee.



MARY BENNETT, Alpha Chi Omega

Secretary, ASWU

Keeping records of all proceedings of the ASWU is the main task of the secretary. She is a member of the executive committee and of the publications board, and serves as secretary of both these bodies.

PUBLICATIONS

STUDENT DIRECTORY

Commonly known as the "Fusser's Guide" gives name, address, and 'phone number of each student besides listing the term's social functions.

STUDENT HANDBOOK

The Handbook is published each year to acquaint new students with the student body and impart information concerning campus activities.

WALLULAH

This annual publication of the associated students appears in June. Upon the approval of the awards committee, ambitious staff members are awarded a certificate with an old English "W." Editor this year will be Jean Fries.

WILLAMETTE COLLEGIAN

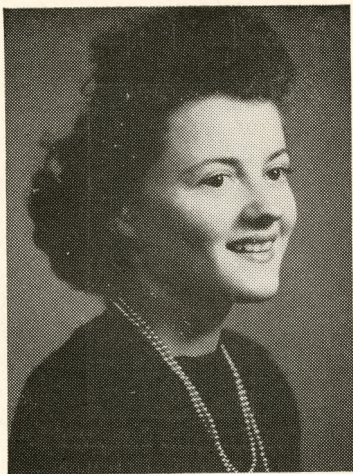
The official college paper, published weekly by the student body, is one of the outstanding University publications in the country. The Collegian has for seven straight semesters won the All-American rating, and last year was Pacemaker, the highest honor awarded to a college newspaper. Catharine Thomas is editing the 1944-45 Collegian. It is usual and expected that Willamette students patronize Collegian advertisers.

ROOK'S BIBLE

Published for benefit of Freshmen. Contains information vital to the new students which if not learned accurately by Frosh may trip them up in Kangaroo Kourt. Must be carried at all times.

WILLAMETTE SONGBOOK

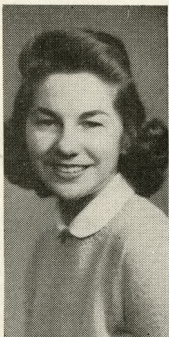
The Songbook includes the outstanding Willamette songs and grows larger each year as Freshman Glee gives new songs.



JAN PATTERSON

Publications Manager

Capable Jan Patterson is serving her second year as publications manager for Willamette University students. During the summer of '44 she was assisted by Margaret Hughlett.



CATHARINE THOMAS

Editor, Willamette Collegian

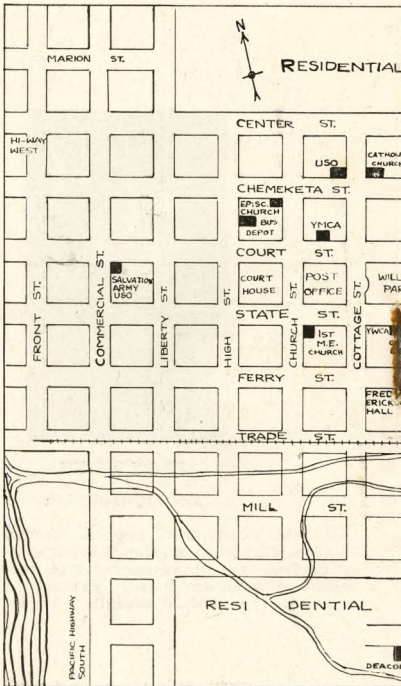
The weekly newspaper of the Willamette students is an important part of campus life. The editor endeavors to maintain and even surpass the high standards set by her predecessors.



JEAN FRIES

Editor, Wallulah

The permanent record of the Willamette campus in the memorable year of 1944-45 will be compiled and edited under the direction of Jean Fries in the year-book, the 1945 Wallulah.



Map of Campus

MUSIC

SYMPHONY ORCHESTRA

Directed by Lewis Pankaskie, composed of navy and civilian members; plays at school functions.

BAND

Creates pep and spirit at games. Under direction of Maurice Brennen.

A CAPPELLA CHOIR

Organized 1939. Under direction of Dean Melvin H. Geist. Gives annual Christmas Vesper Service, Spring Concert Tour (postponed for the duration) appears on chapel programs and civic functions.

During summer of '44 a men's chorus, which performed during the ceremony honoring Rear Admiral Gatch, was organized. The group was devised to take the place of the A Cappella choir which will again be active during the winter semester.

CARNEGIE LIBRARY

First floor of the music building. Consists of a record player placed in the school of music for the use of all Willamette University students. Special hours for listening during which students take charge. Record collection includes both classic and modern music.

STUDENT RECITALS

Presented every two weeks by music students. All students invited, compulsory for students in the College of Music.

DRAMA

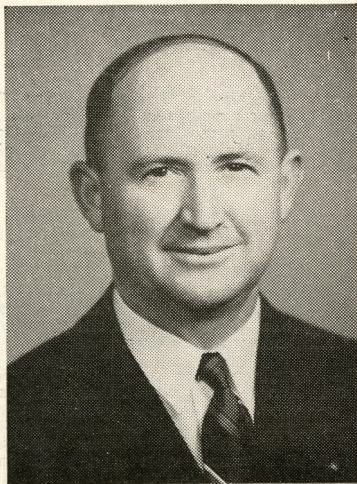
Under direction of Professor Rahe. Two major productions given; one in Fall and one in Spring semester. The Little Theatre is used for skits and one-act plays which are often under student direction.

FORENSICS

Professor Rahe in charge since 1929. Contests and tourneys. Inter-Collegiate participation in oratory, extemporaneous, and after-dinner speaking.

W.U. speakers take part in the various contests in the coast wide Pacific Forensic League, which includes trips to tourneys held elsewhere. Many awards and trophies are offered. During 1943-44 contests nine W.U. students won first place honors. Most of these contests do not require previous experience.

High school forensic tournament sponsored for last nine years. They are held on the Willamette campus with high school speakers and Willamette student judges.



LESTLE J. SPARKS

*Acting Director of
Physical Education and Athletics*

Mr. Sparks will be assisted by Anthony Fraiola, former Little All-American grid star at Willamette.

FOOTBALL SCHEDULE

Sept. 9—Whitman, Walla Walla

Sept. 16—Whitman, Salem (Homecoming game)

Sept. 23—U. of Washington, Seattle

Sept. 30—Klamath Falls Marines, Klamath Falls

Oct. 6—U. of Washington, Portland

ATHLETICS

Athletics at Willamette is maintained under the supervision of the director of athletics and under the jurisdiction of the athletic board of control. Chief specialists Cottingham, Trotter, and McGuire are assisting in carrying out Collegiate activities.

With the inauguration of a year-round school calendar the inter-collegiate athletic program takes on a new aspect this year. Competition was under way early in the summer semester with softball in the first part and football in the second part. Games are to be scheduled with other colleges as well as with service teams and teams of war industries.

Since Navy regulations provide that V-12 men shall not be away from their base for more than 48 hours, and since the Willamette teams will be largely composed of V-12 men, athletic trips will be restricted in distance.

Willamette belongs to the Northwest Conference, composed of the following schools: Whitman College, College of Idaho, College of Puget Sound, Pacific University, Linfield College, and Willamette. The conference fosters as far as possible participation by all members in contests of football, basketball, softball, tennis, and track. Under war-time conditions, however, some of the members are not competing in one or more of the sports, but Willamette will not lack in exciting competition from teams outside the conference.

MEN'S LIVING ACCOMMODATIONS

The U.S.S. Lausanne houses the 200 navy men on the campus and is filled the year round. Formerly the YMCA housed part of the men, but plans have been made for women to occupy the Y this fall semester.

FRATERNITIES

ALPHA PSI DELTA
KAPPA GAMMA RHO
SIGMA TAU

These local fraternities will be inactive for the duration, at which time it is hoped that national fraternities will come to the campus.

SORORITIES

At present there are two national sororities on the campus; Alpha Chi Omega (chartered and initiated June 9-10-11, 1944) and Pi Beta Phi (chartered and initiated June 2-3-4, 1944). It is hoped that the third organization will be national soon.

A recommendation from one alumnus must be received by the Sorority before it can rush any new girl. The alumnus need not be in the same town as the chapter into which the girl is initiated.

SORORITIES

ALPHA CHI OMEGA

965 Court Street

Phone 8911

OFFICERS

President.....Betty Provost Hanuaska
 Vice President.....Thyra Jean Currey
 Recording Secretary.....Shirley Blackman
 Corresponding Secretary....Susan Parkhurst
 Manager Janet Blake
 Rush Captain.....Roberta Jean Yocom

PI BETA PHI

1445 State Street

Phone 8760

OFFICERS

President Betty Andrews
 Vice President.....Louise Cutler
 Recording Secretary.....Acacia Jean Wing
 Corresponding Secretary.....Patricia Lamb
 Treasurer Lois Butler
 Manager.....Emma Lou East
 Rush Captain.....Betty Jean Smith

DELTA PHI

1610 Court Street

Phone 8730

OFFICERS

President Bette Burkhart
 First Vice President.....Louise Wrisley
 Second Vice President.....Katherine Wilson
 Recording Secretary.....Joyce McClendon
 Corresponding Secretary..Arlene Schwartz
 Social Treasurer.....Ruth Farmer
 House Manager.....Ann Strother

SORORITY RUSHING RULES

(Effective summer, fall of 1944, and winter of 1945)

I. SUMMER RUSHING:

1. Each sorority shall be entitled to give two major rush functions in Portland and two in Salem during the summer vacation.
2. A major rush function will consist of more than three women from one sorority and more than three rushees. A group of six is not to be considered a major function.
3. Alumnae of the sorority must observe the above regulations.
4. Violation of a summer rush rule will be subject to punishment, namely the forfeiture of the winter social function of the sorority.

II. FALL RUSHING:

1. Women planning to graduate from Willamette will be given first consideration in rushing.
2. Women who are registered for less than twelve semester hours are not eligible for pledging.
3. Women on probation may not be "rushed."
4. Independent or fraternity men may not assist in sorority rushing.
5. Unfriendly conversation about other houses shall not be indulged in.
6. Rushing will take place November 14, 15, 16, at the Delta Phi house, the Alpha Chi Omega house, and the Pi Beta Phi house consecutively, in the form

SORORITY RUSHING RULES—(Cont'd)

of the informal Fireside; and the 21, 22, and 23 of November will be the Buffet suppers at the Pi Beta Phi house, the Delta Phi house and the Alpha Chi Omega house consecutively. November 25 will be the date for the formal pledge banquet.

7. Friday, November 24, will be a day of silence for both "rushees" and active women.
8. No favors will be given to guests at the buffet suppers.
9. Alumnae of the sorority must observe all rush regulations.
10. No out of town excursions shall include both active members and women eligible for rushing between October 30 and November 25.
11. Violation of a fall rush rule will be subject to forfeiture of the winter social function of the sorority.
12. From November 6 to November 13 the following rules shall be in effect:
 - a. No expenditure of extra time nor money on informal rushing.
 - b. Except for the 14, 15, 16, 21, 22 and 23 of November and the formal dinner, sorority members may not invite non-sorority members to the sorority house except between the hours of 4 and 6 p.m.
 - c. Sorority women may become acquainted with new women in a normal manner. The following are suggestions: (1) Study together, (2) Attend church together, (3) Double date, (4) Visit at dormitories during visiting hours.
 - d. Sorority members may not invite new women to stay in their homes.

SORORITY RUSHING RULES—(Cont'd)

- e. The cost of the favors for the formal pledge banquet is not to exceed \$2 apiece.
 - f. The cost of the Buffet dinner is not to exceed \$.35 for each person attending. A list of all who attended, including rushees and sorority women, shall be turned in to the Panhellenic organization.
 - g. Each sorority may not spend more than \$5 on the informal rush party, including decorations, refreshments, etc.
 - h. Each sorority must submit an itemized account of "rushing" expenditures to the office of the Dean of Women. This itemized account is to be checked by the Penhellenic organization.
13. The three sororities will welcome the Freshmen and new women at a formal tea given on November 9, Thursday. The hours will be 3:30 to 4:30 at the Pi Beta Phi house, 4 to 5 at the Delta Phi house, and 4:30 to 5:30 at the Alpha Chi Omega house.
14. Preferences and "bids":
- a. Rushees shall turn in preferences in sealed envelopes to the office of Dean of Women before 4 p.m. on Friday, November 24.
 - b. The houses shall turn in "bids" to the office of the Dean of Women, together with a list of rushees, not later than 4 on Friday, November 24.

WOMEN'S DORMITORIES

FREDERICKSON HALL

215 South Winter Street Phone 7958

KAPPA HALL

993 Court Street Phone 8823

ALPHA PSI HALL

895 Chemeketa Street Phone 6586

THE "Y"

685 Court Street Phone 9117

To promote a spirit of democracy and new friendships all new women on the campus are required to live in Frederickson Hall during their first year at Willamette. House government is directed by a group of officers, and members of the house council are chosen by the women residing in the dorm. It is important to remember to sign out after 7:30 p.m., and also to remember to sign back in. Hours on week nights and on Sunday are 10 p.m. On Friday and Saturday nights hours are 12 p.m. Alpha Psi, Kappa Hall, and the 'Y' will serve as housing quarters for upperclass independent women who will abide by same rules as those in Frederickson Hall.

CAMPUS ORGANIZATIONS

BLUE KEY

Men's upperclassmen national honor fraternity. Qualities of character, scholarship, student activities, leadership and service are sought in candidates for membership.

SIGMA ALPHA CHI

Sophomore organization formed since most of the men on the campus are lower division students and not eligible for Blue Key. Organized summer of 1944.

CAP AND GOWN

Women's local honorary society of five senior women of outstanding qualities of personality, service, scholarship, leadership, and Christian ideals.

MU PHI EPSILON

Women's national music professional sorority. For advancement of music in America. Students majoring in music having high scholastic standing. Presents two annual concerts; sponsors the Clara Eness Memorial Loan Fund.

CAMPUS ORGANIZATIONS—(Cont'd)**ALPHA KAPPA NU**

Ten per cent of Senior class. Highest scholastic standing through entire course. Announcement of members made at award chapel in last week of school year.

TAU KAPPA ALPHA

National Forensic fraternity. Membership limited to debate and oratorical squads. Organization sponsors inter-class, inter-collegiate debates, various oratorical contests. Member of Inter-Collegiate Forensic League.

DELTA THETA PHI

National law fraternity—The Wolverton Senate Chapter. Promotes high scholarship . . . advancement of justice . . . high ideals in legal profession.

"W" CLUB

Men having a letter in varsity athletics on campus. To encourage sportsmanship at Willamette functions. To enforce observance of all Willamette functions. To enforce observance of all Willamette traditions and customs. Frosh will soon feel its influence.

CAMPUS ORGANIZATIONS—(Cont'd)

DELTA TAU GAMMA

Independent women's organization. Both sorority and non-sorority women entitled to membership. To develop personality fully through social activities. To promote the spirit of democracy among women on the campus.

OFFICERS

| | |
|------------------------------|-------------------|
| President | Lois Robinson |
| Vice President..... | Marian Erickson |
| Recording Secretary..... | Dorothy Zerzan |
| Treasurer..... | Laura Jane Curtis |
| Corresponding Secretary..... | Jane Hansen |

INTER-FAITH COUNCIL

Representatives from eight groups sit on the Inter-Faith Council, which is the central religious organization on the campus.

Y.M.C.A.—Helping the students orient themselves, entertaining and in other ways promoting better student life are all jobs that keep YMCA members busy.

Y.W.C.A.—Known for The Big Sister project, Faculty Firesides. Open to all women students.

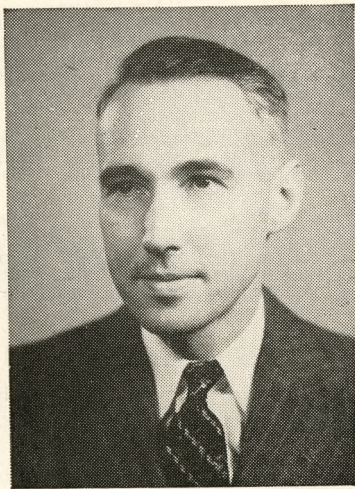
UNIVERSITY VESPERS — Activities include a reception for students, the traditional Thursday afternoon "Cookie Jar," Spring retreat, parties, play night, Senior banquet. Social activities of students to gain working philosophy of life.

CAMPUS ORGANIZATIONS—(Cont'd)

INTER-VARSITY CHRISTIAN FELLOWSHIP—National organization of interdenominational young people interested in high Christian ideals and fellowship. Prayer group every day at 1 p.m.

CATHOLIC CLUB—Newly organized group on campus. Meets every Monday night in Chresto. Advisor, Father McDonnell.

Three other off-campus organizations which belong to the Inter-Faith Council are the Jason Lee Fellowship, Leslie Methodist Fellowship, and the Presbyterian Fellowship.



DR. CHESTER F. LUTHER

Dean of College of Liberal Arts

Supervises curriculum. Endeavors to guide student efforts where they will best be used. Heads mathematics department in addition to duties of dean.



CAPTAIN GEORGE W. SHEPARD, U.S.N.
(Retired)

Medical Officer

Captain Shepard is in charge of the health program for the men of the V-12 unit at Willamette. His office is in the Navy administration building.



OLIVE M. DAHL

Dean of Women

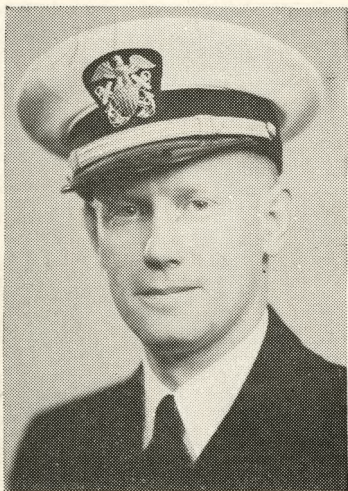
All women have a conference with the dean during the fall term. She advises Pan-hellenic organizations, helps in making up of social calendar, and is helpful in handling the employment problem of women.



DR. DANIEL H. SCHULZE

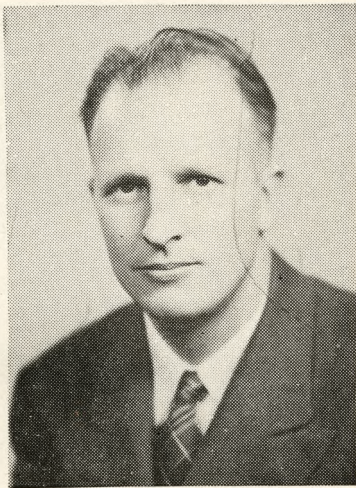
Dean of Men

Employment, loans, scholarship and problems of social adjustment of men students come under his jurisdiction. In charge of chapel announcements through which many students become acquainted with him.



LIEUT. MARSHALL WOODELL, U.S.N.R.

Executive officer who is the coordinator between naval and campus affairs. His office is in the Navy administration building.



WALTER E. ERICKSON

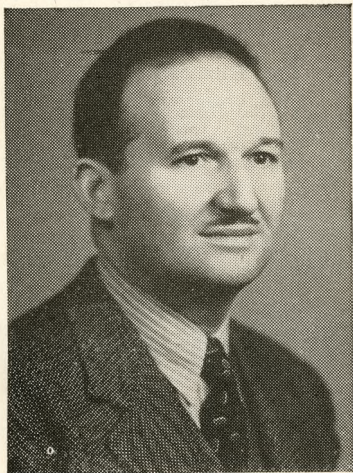
Dean of Freshman, Director of Admissions

New students readily become acquainted with this popular Willamette enthusiast. Under his guidance the navy and civilian students absorb the traditions and spirit of Willamette.



LIEUT. ALBERT L. DE LISLE, U.S.N.R.

This newest of Naval officers on the campus has already become an important factor in student affairs. Aids in student-faculty cooperation and scholarship.



MELVIN H. GEIST

Dean of Music

Head of Willamette's outstanding College of Music, Dean Geist is responsible for the musical activities of the students.

SONGS

OLD HISTORIC TEMPLE

There's an old Historic Temple
Rising grandly through the years;
Where the oaken-hearted fathers
Drew their strength for strong careers.

Down the years its portals open,
Gather wise ones to its fold;
Breathes the spirit of the Westland,
Card'nal emblem 'bossed with gold.

Spirit of the Golden Westland,
Breathing through our fathers' tears;
Tells the story of the Temple,
Bids us hope adown the years.

Sing, oh sing, of old Willamette,
Sing while hearts are young and true;
Sea to sea the chorus swelling,
Dear old school, our W. U.

I LOVE WILLAMETTE U

I love Willamette U,
I love her campus too:
I love her Profs, so good and true,
I love her spirit real true blue.

I love the old mill stream,
I love to sit and dream;
I see it all in shadows cool,
I love our dear old school.

SONGS—(Continued)

VICTORY SONG

Vict'ry for W. U.

The bell in the tower rings.

The battle's done;

The victory's won;

Card'nal and Gold are flaming

Proudly o'er us.

Here's to the Bearcat Team

Who carried our colors through!

Our song shall go

Till the world will know

There's a vict'ry for W. U.!

FIGHT, BEARCATS

Fight, Bearcats, fight!

A victory for W. U.

Cardinal and Gold, victorious of old

Will give us a spirit ever true.

Fight! Fight! Fight!

Cardinal courage show

And Gold is our faith so true

We shout our war cry out to you

Come on and fight, fight, FIGHT!

SONGS—(Continued)

CANNIBAL KING

A cannibal king with a big nose ring
 Got stuck on a Zulu maid,
 And every night when the moon shone
 bright
 Across the canal he'd wade
 To hug and kiss this dusky miss
 Out under the big bay tree,
 And when they met they sang a duet
 That sounded like this to me:

Oh, Jason Lee, socretty boo-ya
 Oh Poppa Waller, chenickety umba
 Umpa-Umpa-Um. (Repeat—Umpa,
 Umpa, Um-pa-pa!)

THE INDIANS KNOWN TO JASON LEE

Oh, the Indians known to Jason Lee,
 Went out one night on a little spree
 They organized a rhythm band
 That soon was known throughout the
 land
 Then they went off to college
 And they took their band along,
 With sharps and flats and feathers in
 their hats
 They beat their big tom-toms.
 The big chief smiled
 And the squaws went wild
 When they sang their college song.
 Woo-oo Woo-oo Woo-oo
 At Willamette U each gal and lad
 Has the same kind of rhythm that the
 Indians had.
 The red man's ghost is with us still
 And if we don't whoop we're sure they
 will. Whoop!

SONGS—(Continued)

ANCHORS AWEIGH

Anchors Aweigh, my boys, Anchors
Aweigh!

Farewell to college joys, we sail at break
of day-day-day-day!

Thru our last night on shore, drink to
the foam—

Until we meet once more here's wishing
you a happy voyage Home.

Sail Navy down the bay, Anchors Aweigh!
We'll never change our course, we're from
the U.S.A. ay-ay-ay!

We've got a job to do over the sea—

Anchors Aweigh, today, as we go sailing
on to victory.

FOR THOSE IN PERIL ON THE SEA

Eternal Father, strong to save,
Whose arm doth bind the Restless wave,
Who bidd'st the mighty ocean deep
Its own appointed limits keep;
O hear us when we Cry to Thee
For those in peril on the sea.

O Savior whose almighty word
The winds and waves submissive heard,
Who walked'st on the foaming deep
And calm amidst its rage did'st sleep;
O hear us when we Cry to Thee
For those in peril on the sea.

VARSITY YELLS

FIGHT TEAM!

Fight, team, fight, fight! (softly)

Fight, team, fight, fight! (louder)

Fight, team, fight, fight! (shout)

YEA, W.U.

Yea, W. U.

Yea, W. U.

Yea, W. U.

Fight 'em, fight 'em, fight 'em.

GO GET 'EM, BEARCATS

Go get 'em, Bearcats, go get 'em!

(slowly, softly)

Go get 'em, Bearcats, go get 'em!

(faster, louder)

GO GET 'EM BEARCATS, GO GET 'EM!

SKYROCKET

S-s-s-s-s-s-s-s-s-s—(rise on whistle)

BOOM!

A-a-a-h, WILLAMETTE!

LOCOMOTIVE

(Spell softly and slowly working up to fast and loud)

W-I-L-L-A-M-E-T-T-E

(Repeat several times)

SPELL BEARCATS

Be . . ar . . ca . . ts (slowly)

Be . . ar . . ca . . ts (faster)

Be . . ar . . ca . . ts (fast)

Be . . ar . . ca . . ts (very fast)

Bear-cats!

BEARCATS! (shout)

