

Willamette Collegian

1842—Willamette University in its Second Century—1945

Vol. LVII.

Salem, Oregon, Thursday, December 13, 1945

No. 7

Third Annual 'Messiah' Performance Set Sunday

Sunday afternoon Salem will hear the third annual presentation of Handel's "Messiah" when the Salem Oratorio society, under direction of Dean Melvin H. Geist of the Willamette College of Music, gives the performance at 3:30 p.m. in the Salem high school auditorium.

Soloists with the civic chorus of 230 members will be Esther Miller, soprano, Josephine Albert Spaulding, contralto, John Schmidt, tenor and Robert Mills, bass. Miss Miller, new Willamette instructor in voice, and

Mills, also a newcomer to Salem, are making their first appearances with the choir this year.

Mrs. Spaulding, a graduate of Willamette, has been soloist for the two preceding performances of the oratorio. Schmidt, who also appeared last year as tenor soloist, is director of the choir of the First Christian church in Salem.

The society, organized last fall as a permanent organization for the annual presentation of the "Messiah" and other choral work, plans to begin work in the spring on a choral selection to be presented at the opening of national music week. The society has presented the "Messiah" for three years without any charge to the public and it will keep the tradition, says Geist.

Composed of the various choral groups of the city, the society this year is joined by a number of Dallas residents who will appear with the chorus. Willamette chorus members and some members of the Salem high school chorus will also appear. The Willamette orchestra, supplemented by musicians from Salem, will provide orchestral accompaniment under the direction of Bernard Barron. Piano parts will be played by Bennet Ludden and organist will be Maurice Brennen of the Willamette music faculty.

Dress rehearsal for the entire performance will be held Saturday at the high school.

Bearcats Vie With Pacific Tuesday Night

The first conference game for the Willamette Bearcat basketball team against Pacific university has been moved up from January 8, and now will be played Tuesday on the local floor. On the following night, Willamette meets the Naval Hospital five here.

A conflict in the schedule necessitated the shift. Willamette was originally scheduled to open hostilities against the strong University of British Columbia quintet, newcomer to the Northwest conference. As it stands now, the Bearcats will have one conference game under their belts before tackling the Canadians.

The game against the Naval Hospital should be a nip and tuck battle. The first encounter ended with the sailors on the long end of a 34-32 score. With added game experience, Coach Les Sparks figures his squad to tip the sailors.

'Cat Still In Question University Awaits SB Action

Action toward reopening of the 'Cat Cavern is at a standstill until the present deadlock in student government is broken, said Pres. G. Herbert Smith yesterday. The Cavern board late last week proposed that the university take over management of the student center, but with the objections raised in Friday's student body meeting, the administration shelved further action on the proposal until it can determine whether student opinion favors university management.

Annexation of the Cavern under the board set up in the new ASWU constitution came, said Smith, with no actual power vested in the student body to effect such a transfer. The Cavern was originated by a joint stu-



Dean Melvin H. Geist, director of the civic chorus which will Sunday present Handel's "Messiah."

Fraternities May Increase Pledge Ranks, Says Council

Each WU fraternity will be allowed to pledge five more men in addition to the quota of 15 set at the beginning of the semester, according to the decision reached by the Interfraternity council at its last meeting. Open rushing is scheduled to continue all semester, with no definite plans set for pledging services.

Student members of the council are Jack Hedgecock, Kappa Gamma Rho; Bill Stortz and Val Sloper, Sigma Tau; Gib Kister and Marv Humphreys, Alpha Psi Delta; with Dr. Robert M. Gaike as faculty member.

Fraternity officers are Kappa Gamma Rho, president, Jack Hedgecock, pledge captain; Clarence Edwards; Sigma Tau, president, Bill Stortz, vice president, Val Sloper, secretary, Bud Fairham, manager, Wes McWain; Alpha Psi Delta, president, Gib Kister, secretary, Paul Benage, manager, Marv Humphreys, social chairman, Irving Miller, rush chairman, Bob Marr.

Suffern to Be Chapel Guest

Guest speaker for Monday's chapel program will be Ellen Suffern, a Methodist missionary who spent 25 years in free China. There she witnessed the effects of war upon the Chinese before returning to the United States in 1944. Miss Suffern will tell of her experiences in the Orient.

Wednesday's chapel will be a special Christmas chapel sponsored by the Interfaith council. Marjory Grenfell is chairman in charge of the program.

SB Constitution To Be Discussed

Council, Chapel to Attempt Solution of ASWU Tangle

Tonight's student council meeting will find the group faced with a tangle of constitutional difficulties when they attempt to iron out difficulties in finance and Cavern board setups heightened by Friday's student body meeting.

Objections raised in Friday's meeting to the revision of the constitution which would have provided for ASWU authority to turn over operation of the 'Cat Cavern to the university caused the shelving of the issue until tomorrow's student body meeting during chapel period.

Proposed changes in the finance board setup also met opposition upon the grounds that students were not well enough informed then on the matter to vote on the issue. A week's lay-over on that revision was also granted.

General sentiment on the campus seems to be that the finance setup as it now stands needs revision to provide for a more stabilized and predictable allocation for each activity from year to year. Proposals have been made to various groups and individuals that student finances be returned to a percentage basis with the finance board holding jurisdiction over distribution of a reserve fund.

The establishment of a reserve fund with a certain percentage of student body funds each semester would thus provide funds to be administered by the finance board in making the proposed reconversion to percentages more flexible than in the past. The established minimums would provide insurance of funds for each activity's program.

Discussions of the problems will take place in tonight's council meeting, and the matter will again be thrown open to students in the chapel meeting tomorrow at 11:40.

Action to clear up the tangle now present in the student government is necessary before further steps can be taken to reopen the 'Cat Cavern which has been closed since before Thanksgiving. No possibility remains now that the center will be reopened before the Christmas vacation.

Last week's Collegian explained the proposed constitutional revisions, and students are urged to refer to the discussion and to the present constitution to better acquaint themselves with the issues in question.

Independents Name Gage Vice Prexy

Independent women Tuesday elected Dorothy Gage to the office of vice president of the newly formed organization. The group, headed by Virginia Cannon who was elected to the presidency two weeks ago, chose Barbara Kent as new secretary and Ro Jean Finley gained the unanimous appointment of publicity chairman.

Revotes, necessitated after Tuesday's balloting in Eaton hall, will be taken at the organization's next meeting Monday evening in Chresto cottage. Up for the office of treasurer are Nan Wilcox and Mary Lois Cotton. Social chairman of the group will go to either Freta Hendrickson or Winona Henderson, depending upon the outcome of the Monday evening vote. The sergeant-at-arms post will be decided between Jean Caldwell and Betty Levine.

Regular meeting date for the group has not yet been set, says President Cannon, but their next scheduled meeting will be Monday evening. All independent women of the campus are eligible for membership.

Annual Christmas Party Will Feature Santa Thursday Night

Santa Claus and Tinker will be featured guests at the annual ASWU Christmas party in the gym Thursday evening, sponsored by the sophomores. Marge Grenfell, social chairman of the class, has planned a program similar to last year's party, and announced that jeans and pajama tops will be worn.

Anyone who wishes to give humorous gifts to either faculty or student body members may turn them in at the student body

office before next Thursday, Caroline Cooper, entertainment chairman, said yesterday, and they will be presented at the close of the evening.

Musical numbers, group singing, mixers, and a sock dance will comprise the evening's program.

Refreshments are under the direction of Eileen Lytle. Bob Woodburn and his committee of Charles Zerk and Bob Burns will decorate the gym, and Betty Dutton is handling publicity.

Check 'Guide' Proofs Today, Urges Editor

Check today with Fusser's Guide proofs on the Eaton bulletin board if you haven't already done so, urges Ruth Bain, editor of the student directory. The lists will be removed this afternoon at four and a number of corrections remain to be made before the proof is sent to the printers.

Students who failed to include their college addresses in the registration forms should add that information to the lists to make the book complete, says the editor.

Miss Bain expects to have the corrected sheets in the hands of the printers tomorrow so that the work of composing, printing and binding the books can be completed. Cover design of the Guide this year was worked out by Dorothy Hoar, senior in art.

Just when the Guides will be completed remains indefinite though it is hoped that they may be distributed before Christmas vacation.

Independents Play Hostess To St. Nick

Tomorrow evening at 8:30 Santa Claus will come to town at the independent women's party in the dining room of Frederickson hall.

All Willamette women who are not affiliated with a sorority are invited to attend this party which is the second social event of the group since its recent organization.

The evening will be spent in playing games and a short program will be presented. Santa Claus will be the honored guest with decorations carrying out the Christmas theme.

Committee heads for the party are Glenna Roundtree, refreshments; Winona Henderson, games; Freta Hendrickson, decorations; Barbara Kent, invitations; Helen Larson, chaperones; Jean Caldwell, cleanup; and Ro Jean Finley, publicity.

Tuition Payments Due Saturday, Says Fenix

Satisfaction with student response in paying tuition and fees was expressed today by Business Manager Robert W. Fenix.

As most everyone knows, all fees except the final payment on room and board are due this Saturday. Second half of tuition costs come due then, and second payments on room and board are to be made by this date. Final payments on board and room are due on January 15.

Collegian Features

BEEFS and BOUQUETS

To The Editor:

Now that the smell of grease-paint and the glare of the footlights have died away from the play last Friday we've had a little time to think over the maze of activities that go into such a production. We owe a vote of thanks to the cast who made the show that met the eye such a success. We're equally grateful for the "behind-the-scenes" cooperation that made it all possible. Honestly, the spirit of the whole production staff was wonderful.

Especially would we like credit to go to Gwen Harper, stage manager, who acquired many a gray hair looking after stray cockroaches, penguins and staircases. Also to our unsung hero, Wally Baumer, who entangled himself in lightplugs and fuse-boxes so you could see the mighty Whiteside. The "Man" would never have had a place to go to dinner had it not been for Mary Parker's able guidance of transportation. And how would Banjo have taken his prize to Nova Scotia if Pacific university hadn't loaned him their mummy case?

And what about the workers who so willingly responded to alarm clocks early Saturday morning so that ye alde set could be carefully stowed away for the next production? Oh, there are scores of names that deserve the klieg lights. If they were listed here you would find that they are typical of the type of student that makes the world at Willamette go around. They are the push that makes a plan a reality. It's to those who have worked so enthusiastically with so little glory that we'd like to give a bouquet with our sincerest thanks for a job well done.

LOIS MESSING
Drama Manager

Dear Editor:

We, the members of the College of Music, are FURIOUS!!! And that's putting it mildly. At the recent meeting of the finance board, we were allotted the magnificent sum of \$40.00!! Now, we of the music school realize we are nothing short of geniuses, but we haven't quite been able to figure out how to make \$40.00 pay for new band instruments, new band uniforms, costs of repairs and maintenance of said instruments and uniforms, a choir trip, cost of cleaning and maintenance of choir robes, and—but there is enough right there to merit a sufficient amount of anger.

Let us justify that anger:

1. New band instruments are seriously needed. We are expected to have a first rate band and orchestra, yet we can get along with a pair of battered old tympani that can't even be tuned; a bass drum that threatens to die of sheer exhaustion at the next flabby "boom"; tubas that were third class instruments when the university so condescendingly bought them for us, and now wouldn't even classify as salvageable material for the scrap drive. Then, too, we have practically had to patch the instruments together with baling wire because there is no money for repairs. A good band and orchestra with that kind of treatment from the school? To you, we say emphatically PHOOEY!!!

2. The uniforms provided for the band are of the cheapest, flimsiest cotton material that was ever marketed. They look like the uniform on a 10c toy soldier, and we'd favor the soldier's uniform in a showdown. The poorest high schools at least have woolen uniforms—but not Willamette; we can get along without.

3. The choir, of which Willamette claims to be inordinately proud, has to be decently robed—in clean robes, and the material isn't the kind that you can take home and wash casually. The

choir used to go on an annual tour before the war, and provided as good, if not better publicity for the university than the athletics, yet athletics get \$1500.00!!!

The university wouldn't think of making its darling little athletic department use old, battered equipment, but the music school is so unimportant. We're only training people for future careers, and we only pay the highest tuition on the campus, therefore we're not entitled to good equipment.

And if it is true that the money was allotted according to student representation, then the finance board had better learn to count, because the members of the music school far outnumber those participating in athletics . . . and we all are members of at least one organization in the music school. Consequently, we aren't contributing as much to student activities.

On \$40.00, who COULD?

We know that the ASWU will say, "Oh, they aren't classified under student activities." And the university will say, "Oh, they aren't classified under educational activities, so we won't subsidize them."

What kind of an attitude is that?

We repeat, Editor, we are FURIOUS!!!!

STUDENTS OF THE
COLLEGE OF MUSIC

To the Editor:

A great many things have been said and intimated of late regarding ASWU's constitution, budget and financial condition. How much is fact, how much fancy and how much is pure agitation is somewhat hazy in my mind as it is also, I feel, in other minds.

In looking at the budget, however, and comparing it with former years, one does see abrupt changes—changes which seriously cripple some worthwhile and needed activities. The school is for the education of the students and should be planned to serve them in the best way possible. The question then is—does the present budget do this? Does the present form of the constitution do this? What is the most sane way of bringing the greatest good to the greatest number?

Certainly there are things we would like explained, and we don't like to feel that we are being guinea pigs for a new system which is being devised or that a lopsided budget will always be the outcome as a result of the present setup.

Some of Willamette's most well-known and cultural activities are at stake. Can activities so highly supported in former years become, so soon, unimportant? The system and basis for change needs investigation and every student should shoulder responsibility for this. Disinterest breeds a radical element but a broadminded student body looking to Willamette's future is our greatest asset. Let's not let someone think for us.

ASWU MEMBER.

Harried Society Reporters Plan Revolution, Decide to Tell Public Truth About Marriage

"The bride looked stunning in white satin and ivory lace. She carried a prayer book and one pale orchid. The bride was given in marriage by her father, Mr. Ralph R. Ribbosswoff. Little Turnip Sprout was her cousin's flower girl, and made a sweet picture as she walked before the bride and scattered rose petals in her path. A reception was held later at the Country Club."

Why, oh why, must society reporters write copy like that? Why must space that could be used to far better advantage be crammed with the same monotonous drivel issue after issue?

Some day, some how, can't some "Soc" hound for some reason, loose her self control. And then when that maniacal impulse does come, the REVOLUTION of the Society page will have arrived!

Just imagine some cold morning, you go out on the front porch, retrieve the paper from its perch in the maple tree, and settle down in back of your breakfast to read a nice account of your boss' dear little daughter's wedding. And then your eye is hit by this . . .

"One of the biggest turnouts this season was seen at the Community church last Monday. The wedding of Laughter Ribbosswoff was the big drawing card. The affair was originally

Half Nelson Haven Calls

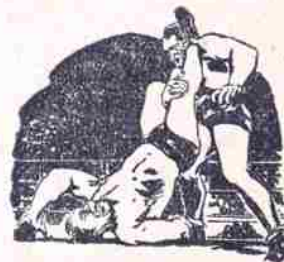
You've taken in the drama offered by the local cinema houses. You sat through the floor show at the one and only night spot. You can't see dancing, when it's a choice of juke box music or Elmer Snodgrass's old time rhythm . . .

But don't turn to your date and wail—"I can't think of a place to go!"

Because you've skipped the best entertainment in the village, if you haven't ambled down to the Ferry Street Gardens any Tuesday night and caught the grunt 'n groaners at their uproarious antics!

If it's your first time appearance at one of these "rasslin' affairs" and you're a little on the squeamish

side—we'd recommend the balcony. Its virtues are manifest—mainly you don't worry about the "masked marvel" landing in your lap, during some of the more intense scuffling! Of course veteran crunch clientele turn thumbs down on the balcony—because the



clouds of smoke become so dense toward the end of the evening's tournament—that you peer at the main event through haze not unlike an Oregon fog!

Now students, the main thing you must remember is this: there's always a deep-dyed villain matched against a hero above reproach. And you don't have to wait long to find out which is which! Let the fair-haired boy jab his finger in his opponent's eye—or pummel strategic nerves, when he already has the meanie in a body hold—and the crowd roars approval!

But if an unpopular gladiator so much as twists his finger in the favorite's ear—the audience outdoes itself—giving the perspiring referee the works!

These fans, by the way, are as much a part of the fun as the rowdy ring shenanigans. Gray haired women scream murderous threats, little school kids swarm worshipfully around "GI Joe" Lynam's corner—and the city cops are kept busy patrolling the aisles to prevent further "battles royal" between the strongly partisan fight followers.

They'll give you glib details about the picturesque characters booked for the evening's mat card—these fans. "Watch that Chinaman, Walt-the sneeze-Aichu, jiu-jitsu! Negro Rufus Jones used to be quite a head-butter 'til Gray Mask messed up his skull a few brawls back. Yukon Jake, better known as Bulldog Jackson, may look like an old codger—but he has forgotten more about rasslin' than those squirts will ever latch on to!"

Well—you'll probably stagger down the armory steps exhausted—after your first exposure to the wrestling bug—wondering whether you or Martinelli took that last fall! But, even money—you'll be back for next week's calamitous clash!

scheduled for 3:15 P.M., but due to adventures



experienced at a stag party the night before, the groom was in no condition to attend until 4 P.M. The forty-five minute interval that elapsed was unpleasantly filled by the organist, Mr. A. L. Rowe. Mr. Rowe tried vainly to cheer the gathering

by offering such selections as "Ode to a Fish Horn," "I Loved You Last Night, But Why Must You Wear A Purple Tie?", and other appropriate renditions.

Little Turnip Sprout, young cousin of the bride, began proceedings by prancing and flaunting her way to the front of the church, strewing rosebuds and revealing astonishing contortions for a child so young.

The bride at last appeared on the arm of her father. (Hmmm, you think. Must have been eating his Quaker Puffed Rice for the past week). She looked unusually haggard and sallow in her pearl-white dress. In her right paw she clutched an ivory prayer book and a slightly depressed looking orchid.

When the service was finally over, everyone hastily retired to the Country Club for refreshments, and a good time was had by all.

Willamette Collegian

"In Age there is Wisdom"

Editorial and Business Offices

Ground Floor, Waller Hall

Phone 3088

Member

Associated Collegiate Press
PACEMAKER

Official Publication of the Associated Students
of Willamette University

Entered at the Postoffice at Salem, Oregon, for transmission through the mails as second class matter. Published weekly except during examination and vacation periods. Subscription rate: ninety cents per semester. Represented for national advertising by NATIONAL ADVERTISING SERVICE, INC., college publishers' representatives, 420 Madison Ave., New York—Chicago—Boston—Los Angeles—San Francisco—Portland—Seattle.

EDITORIAL STAFF

EDITOR — EVELYN DEAL
NEWS — NANCY STUART
FEATURES — KAY KARNOPP
COPY — ARTIE PHILLIPS, JOAN KATHAN
SPORTS — FRED GRAHAM

BUSINESS STAFF

PUBLICATIONS MANAGER — NANCY STUART

Colleges Regretful at 'No Forensics' News

Reverberations continue to be heard from all quarters on the curtailment of forensics activities at Willamette brought about by the shutdown of that department's funds in this semester's budget. Communications have come from surrounding schools expressing extreme concern that WU will not be able to participate in the intercollegiate contests scheduled.

In a letter to ASWU President Harold Malde, W. A. Dahlberg, director of the University of Oregon speech and drama division, told of the disappointment felt by his and other colleges and universities upon hearing that WU speech contestants will be absent from the meets.

He continued, "The crying need of the world today is that the educated men and women of our nation be effectively

articulate and I am always disturbed when the budgets for any of the communication skills, reading, writing or speaking, are cut.

"I suppose that I have a prejudice for the speech work that is being done throughout the State of Oregon and yet I feel so strongly the need for an effective projection of the ideas and convictions that students acquire in their college training that I can't refrain from prevailing upon you to give what support you can to a further extension of the good work that Willamette university has done in the past in the field of speech education."

Pacific university's president, W. C. Giersbach, termed the news "doleful" and in a letter to Dr. Herbert E. Rahe, professor of speech and drama, expressed the hope that the WU situation might take a favorable turn.

"It would be tragic indeed," says his message, "if so valuable an experience as intercollegiate forensics gives, should be denied students who are so minded, rather than minded in the direction of athletics, music or drama. We here at Pacific have considered them all equally important and have weighed our action accordingly."

Linfield's forensics director, R. D. Mahaffey, stressed the importance of forensics in Willamette's activities by stating: "If they (the finance board) could only be made to realize that the small schools, Willamette and Linfield, are known up and down the coast and nationally (through inter-American affairs) by forensics and not in any other field. Where can we meet the big name schools, and successfully too, except in forensics?"

Brennen Wants More Musicians

Bandmaster Brennen today made another plea for more horns, flutes, and baritones. Talent is needed so badly that credits are still given for this subject. There cannot be chapel programs, from the band until there are more band players. All kinds of instruments are needed.

Of course, Brennan is looking forward to the time when his new son, Bruce John, will join the band but right now he needs more advanced students of music.

Whiteside et al Make 'Dinner' Successful First Production

By Dona Adams
With the fracturing of Sheridan Whiteside's other hip, the WU drama department dropped the curtain on its first production of the year, "The Man Who Came to Dinner," Friday evening in the Leslie junior high school auditorium.

Success of the play which was credited to the professional quality of the entire cast, is shown in the sale of tickets, which, says Dr. Robert E. Lantz, ASWU general manager, greatly exceeded that of previous years. Figures as yet are incomplete on the financial side of the play but reports indicate a considerably brighter picture than has devel-

Nationwide Housing Shortage Rages; Willamette University Feels Pressure

With four professors evicted from their homes, at least five married students commuting from Portland and as many more quartered temporarily in town with their in-laws, the nationwide housing shortage came into sharp focus on the Willamette campus this week.

While some professors have found shelter through buying homes at inflated prices, problems still remain for veteran students as apartment rentals soared with the recent lifting of OPA controls, and there aren't any apartments vacant, anyway!

Ousted by a returned service man landlord, Prof. Carl J. Folkerts found his first year at Willamette further complicated by a strenuous search for a roof over his head. His house hunt, which enlisted the aid of Pres. G. Herbert Smith and all profs not themselves looking for shelter, culminated this week in the

Monk to Give Premed Test Tomorrow

Students desiring to take the premedical aptitude test tomorrow must pay their \$2 fee to the business office and present a receipt to Dr. C. R. Monk, under whose direction the test will be given. The test will be taken in room 124 of Collins hall at 2 o'clock.

Results of the test are not given to students, but grades are reported to medical schools to give them a check on the aptitude of applicants. Premeds who expect to enter medical school within the next school year are advised to take the tests. Dale Hunsaker, Roger Putman and Frank Peterson have signed up for the test, says Monk, and Vernon Bartsch and Collins Utter may possibly take it also.

The tests, discontinued while the navy was here, are composed of several parts covering various aspects of premed study. Sections on anatomy and on diagnosis of disease are given the student for study and after a measured period of time, questions concerning the material are put to the applicant. In the test also are true and false questions on biology, questions to determine knowledge of general current information and a section on logical analysis.

discovery of another absent service man's home. His problem thus only temporarily solved, the economics prof still contemplates the possibilities of leasing a lot in the city park from the squirrels to build a home for his family.

Dr. Robert E. Lantz is elated over his prize. He succeeded in leasing a palatial mansion of "gay nineties" vintage only three days after his landlord served him with a notice to vacate his present quarters. Lantz expects to modernize his find and rent the extra rooms to students.

The house, rented sight unseen by Lantz when faced by an eviction notice and by prospects of no roof between his head and the Oregon rain, stands on the property purchased by the First Presbyterian church as a new building site. The second house in Salem to be converted from gaslight to electricity, the new Lantz home still possesses the gas fixtures, converted for the new-fangled invention. The house has all the old-time features, bay windows, balconies, and double sliding doors.

Also running into landlord trouble, Dr. Lovell solved his problem by the purchase of a

country home and what time he can spare from observations of postwar rumblings is devoted to remodeling schemes.

At the head of the line of apartment seekers is Janice Good, Pres. Smith's petite secretary newly arrived from DePauw university. Temporarily rooming at the home of Dr. and Mrs. Lawrence Riggs, she has her name on every apartment waiting list in Salem. Optimistically, she hopes to have one cornered by March when her service man husband will arrive to attend law school.

Meanwhile Dean Walter E. Erickson, under a barrage of inquiries from prospective students concerning available accommodations, is forced to discourage their attendance. Alpha hall, vacated by women students early in the semester when they were consolidated in Lausanne, Frederickson and Laurel halls, now houses married veterans. Housing for men students is still a problem with no fraternity living groups this year and a men's dormitory still only in the planning stages.

The rapid turn of events in the housing shortage forces all those fortunate enough to be now living in rented space, profs and students alike, to wonder if tomorrow they'll have a roof over their heads.

On other campuses, trailers, apartment houses, gymnasiums, abandoned war plants and other improvised quarters have been adapted to meet acute situations. Married veterans are the prime problem involved, shows a survey conducted by the American Council of Education. Thousands of students and former service men, especially married veterans, are unable to enter college as a result of the housing crisis. While in ordinary times colleges can expect seven per cent of their students to be married, the figure for veterans now stands at 40 per cent. In its survey the council reached into every state of the union and everywhere found the same conditions. Lack of living quarters, acute overcrowding, turning away of students and emergency measures to provide temporary facilities everywhere prevail.

'Dinner' Cast, Rahe Take Weekend Trip

Cast members and the production crew of "The Man Who Came to Dinner" will spend the weekend on a fishing trip at Nelscott at the beach cabin of Prof. and Mrs. Herbert E. Rahe. As a relaxation after last Friday's performance, the group will go steelhead fishing on the Siletz river.

Pat Wetstein is handling details for the trip which is planned for Friday evening to Sunday.

Planning to retreat after plays and tests are Kay Karnopp, Margaret Allen, Pat Miller, Joyce McCracken, Joyce Feiden, Lois Messing, Corrine Engdahl, Ruth Farmer, Melva Williamson, Richard Spooner, Ben Mosher, Roger Fogelquist, Earl Fedje, Wally Baumer, Doris Bartholemey, Margaret Wood, Bob Ross, Norton Frickey, Marion Van Leeuwen, Jerry Smith, Dorothy Deal, Virginia Atkinson, Wes McWain, Miss Wetstein and the Rahe.

After the play Friday Rahe invited the cast to his home for an after-performance party. At the party, Rahe was presented with a set of bookends as a gift from the cast.

Patronize Advertisers

Stylish Clothes
for the
Smart Set
The Fashionette
429 Court

Salem High Honorary Invites Ex-Members

Willamette students who are former members of the Salem high school Sigma Lambda chapter of National Honor society are invited to attend the annual homecoming semi-formal dinner next Thursday in the high school cafeteria, according to information received this week from Beryl Holt, adviser of the high school group.

No reservations are required for the dinner which will begin at 6:30. The annual homecoming has been held each year since 1933.



oped in recent years, says drama manager Lois Messing.

All of the play's actors gained applause for a job well done. Wes McWain in his unusually well-interpreted portrayal of Whiteside, Janie Mathers in the role of his secretary and Gaylord Howard, Melva Williamson, Joyce McCracken, Norton Frickey and Kay Karnopp as the Stanley family upon whom the "Man" descended, all collected honors. Actress Sheldon, newspaperman Jefferson, Sarah the cook, John the butler and the harassed nurse Miss Preen effectively graced the stage Friday night to add to the production's success.

Earl Fedje, Dale Smith, Jerry Smith, Pat Wetstein, Margaret Allen, Jack Fair, Dick Larson and Robert Ross were all notable parts of the cast.

The black-and-white-suited guests of Whiteside, Drs. R. Ivan Lovell, Robert E. Lantz and Lawrence Riggs, became "Oscar" award candidates with their brilliant characterizations. The Alpha Chi Omega trio composed of Betty Louise Sinkola, Pat Mansfield and Elaine Cloudy furnished musical numbers for act two and the between-acts intermission.

MADSEN'S
Ice Cream and Fountain Service
Open Every Day—11 a.m. to 11 p.m.
Near the Elsinore
Phone 5152 130 S. High St.

... WELCOME ...
As Always
PADE'S GROCERY
(Just off the Campus)



Mrs. G. Herbert Smith, director of the Pi Beta Phi national project, who will be honored with Mrs. Clare R. Dobler as national officers at a tea Saturday at the Oregon Gamma chapter house.

President's Wife Director For National Project

Mrs. G. Herbert Smith, wife of the president of the university, is one of the national officers of Pi Beta Phi to be honored Saturday at a tea at the Oregon

Gamma chapter house. Mrs. Smith is one of the five national directors of the Pi Beta Phi settlement school in Gatlinburg, Tenn., national project of the fraternity.

Mrs. Smith received her appointment to the board of directors, which is comprised of members from various sections of the United States, by the national council of Pi Beta Phi in June of this year and will serve in this capacity for a term of five years.

The Pi Beta Phi settlement school was established in 1912 in the Great Smoky Mountains as a living memorial to the founders of the fraternity. It serves 400 students, mountain people of Tennessee, to whom it gives a stabilized life and means of income through education and encouragement.

A registered nurse of the community health service center at the school administers to the sick and has helped throughout the last year in inoculating all children before academic sessions commenced. These inoculations decrease the number of disease epidemics which are prevalent in that section of the country.

An adult project of the old weaving art has helped men and women of the community in becoming self-supporting. The weaving is done in the homes of mountain women under Pi Phi standards and supervision. Alumnae of the fraternity buy the goods from the weavers and then resell the merchandise as Arrowcraft goods. Profits contribute to the support of the school.

Appropriations are received from Smith-Hughes, county and state educational funds which apply on the cost of regular school work and vocational training. Pi Beta Phi fraternity pays the remaining expenses.

Patronize Advertisers

For Quality Foods

State Street Market

In the Heart of Salem

Fresh Fish and Frozen Foods
Our Specialty

A Few Steps from the Capitol

1230 State Street

Dr. E. Boring Associate Optometrists Dr. S. A. Wheatley

BORING OPTICAL

383 Court Street - Salem, Oregon

A Complete Optical Service
No Charge for Adjustments
Credit Gladly

Phone 6506

Christmas Season Parties Are Planned By Halls, Greek Women Next Week

Ushering in the Christmas season at Willamette will be a series of parties given at Lausanne, Fredrickson, and Laurel halls, and at the four sorority chapter houses during the coming week.

Lausanne Women Will Carol

Women from Lausanne hall plan to begin their Christmas party next Wednesday night by going caroling. On their return they will gather in the lobby for refreshments and presents distributed by Santa Claus.

General chairman for the party is Winona Dillard. On her committees are Dorothy Gross and Irene Bailey, decorations, and Ginny Atkinson and Mildred Norton, refreshments. Helping Santa Claus with the presents will be Ellen Forslund.

Dr. and Mrs. Lawrence E. Riggs will be special guests.

Fredrickson Party at Ten Tuesday

Women of Fredrickson hall will hold an informal yuletide get together at ten Tuesday night. Singing, presents and refreshments in addition to a program under supervision of JoAnn Tweedie will fill the evening. Social chairman for the function is Gwen Harper. Assisting her is Irene Churchill in charge of refreshments.

Laurel Slates Fireside

A formal fireside and waffle dinner is scheduled by women of Laurel hall next Thursday. Making general arrangements for this is Nadine Boettcher. Committees consist of Jane Hansen, Kathleen Secord and Corinne Malen, tree and decorations; Jean McLaughlin and Roberta Bestul, decorations; Jewell

Schmidt, Mary Lynn Watson and Phyllis Garra-brant, food; and Barbara Miller and Anne Niesen, clean-up.

Alpha Chis Will Have Guests

Members and pledges of Alpha Chi Omega will have as special guests the mothers' club, alumnae, and patronesses at their party on Monday night. The traditional Christmas gifts to the house will be presented and opened at this time. Entertainment will be provided by the pledge class. In charge of the affair is Evelyn Jory. LaVerne Harnsberger is arranging for refreshments.

Chi Omegas Set Tuesday

Chi Omega sorority members and pledges will gather Tuesday at 8:30 p.m. for an evening of Christmas caroling and entertainment. An exchange of gifts will take place and "lots of surprises" are promised. Heading committees, under the direction of Gin Wiebe, are Barbara Crawford, tree; Pat Wetstein, decorations; Terry Stewart, refreshments; Dorothy Boyd, singing; and Juanita Moe, cleanup.

Santa to Visit Dee Gees Monday

Santa Claus, whose identity has not been disclosed, will visit the Delta Gamma house Monday evening. Dee Gee members and pledges will enjoy singing, a skit, and refreshments. During the party, gifts to the house will be opened. Lois Messing, assisted by Vicky Jones and Ruth Farmer, is planning entertainment, while Mary Nims, Von Kauffman and Joyce Hanks will provide for decorations and refreshments.

Sunday Set by Pi Phi

On Sunday, December 16 at 7:30 p.m., Pi Beta Phi sorority will entertain its members, pledges and their friends at a party. The trimming of the Christmas tree will take place during the evening. Thelma Wilcox is making general plans for the affair.

Tea Saturday to Fete Pi Beta Phi National Officers

Saturday afternoon between the hours of three and five a tea will be given by members of the Nancy Black Wallace alumnae club at the Pi Beta Phi chapter house. The tea is being given in honor of Mrs. Clare R. Dobler of Everett, Washington, Lambda province vice president, and Mrs. G. Herbert Smith, national director of the Pi Beta Phi settlement school.

All Greek letter women in the city, faculty wives, women faculty members, Pi Beta Phi active members and pledges, the Mothers club and alumnae are invited. Decorations will follow the holiday motif.

Mrs. Charles Sprague will introduce guests to the line. Mrs. Dobler, Mrs. Smith, Mrs. Joseph A. Davidson, housemother, Mrs. Elbert W. Roberts, president of the alumnae club, and Mary East, chapter president will be in the receiving line.

Sigma Tau Dinner Hosts

Members of Pi Beta Phi sorority were entertained last night at a dinner by Sigma Tau fraternity who played hosts to one of the year's first exchange functions among Greek letter organizations. The affair was held at the Quelle and commenced at 6:30.

Guests of the evening were Mary East, Lorraine Murdock, Paula Smith, Dorothy Symes, Evelyn Johnson, Adele Egan, Thelma Wilcox, and Mary Ann Witliff.

Fraternity hosts were members, Bill Stortz, Dick Steves, Val Sloper, Wes McWain, Warren Lessig, Tom Gabriel, and Fred Graham; pledges, Norton Frickey, Bill Bonnington, David Bristow, Don Preiss, Guy Jonas, Jim Zeller, Morris McElwee, Jean Brown, Roger Fogelquist, Sam Barker, Willis Person, Bob Nickoloff, Keith Evans, Dick Spooner, and Bill Halseth.

'44 Graduate Announces Engagement

Mr. and Mrs. C. W. Mason of Hillsboro recently announced the engagement of their daughter, Ella Rose, to Franklin Scudder of Chico, California. Miss Mason, a Willamette graduate with the class of '44, was a member of Delta Phi sorority.

After her graduation from Willamette, she went to the University of California at Berkeley for a year of graduate study. Miss Mason is now teaching Spanish at Delano high school, Delano, California.

Scudder is a graduate of Pomona college, Claremont, Calif., and has done graduate work at the University of California and University of Southern California.

Foibles and Fashions

The men who came to dinner weren't they a panic, dalinks . . . stripes are so-o becoming to our faculty . . . all the way to the jail, boys . . . yes, back to the . . . oh, yes . . . the play . . . add added Aunt Harriet . . . antithesis to her shawl creation is her wool plaid . . . pearl-but-toned yoke . . . three-quarter sleeves . . . Christmas cheer for all the year.

Lavender . . . low lights . . . oh those Alpha Psi's . . . Vicky Jones in a two-piece wool lavender . . . accentuated by silver clip. Same color . . . deeper hue we find Miss Morange . . . rich purple . . . zoot . . .

Cheer up, keed . . . it doesn't always rain like this in Oregon . . . sometimes it rains harder . . . But come what may, Donna Adams braves all in her shiny steel-gray topper . . . um huh! . . . Timber! . . . 'Nother coat . . . can't miss it . . . Casey's red 'n black lumber-jack shorty . . . checks . . . checks? . . . I love 'em . . . bank form . . . natch! Our Christmas advice to you . . . buy in November . . . be happy in December . . .

KAY'S
WOMEN'S WEAR

480 State

Salem

Gems of watches
that tell her it's
Christmas-time

STEVENS & SON
MANUFACTURING JEWELERS
339 Court Street

Extended Payments

The Spa

Students' Friendly Place
To Meet

382 State

SOCIETY

Fraternity Pledge Parties Set for Tomorrow Night

This week's special spotlight will feature the return appearance of fraternity pledge parties, when the newly installed pledges of the three men's organizations on the campus officially entertain for the first time in two years.

Sigma Tau

Sigma Tau fraternity will hold their semi-annual pledge party at seven o'clock tomorrow night at the Quelle, with a dance to follow the date dinner. In charge of the event are co-chairman Bill

Bonnington and Norton Frickey.

Committee heads for the evening's entertainment are Norris McElwee and Roger Fogelquist, decorations, Bill Halseth, and after-dance refreshments, Keith Evans. Active members, Bill Stortz, Wes McWain, Val Sloper and Fred Graham will serve as waiters for the dinner.

Chaperones for the festivity will be Dr. and Mrs. Robert M. Gatke and Dr. and Mrs. Kenneth McLeod.

Couples attending will be Bill Bonnington, Joyce McCracken; Bill Halseth, Edith Fairham; Dave Bristow, Dona Adams; Sam Barker, Pat Holtz; Don Preiss, Kaye Dick; Morris McElwee, Carol Diamond; Bob Nickoloff, Beverly Pattison; Buck Jonas, Sarah Jane Ohling.

Keith Evans, Phyllis Freres; Dick Spooner, Jacqueline Walker; Norton Frickey, Eunice Harvey; Willis Pearson, Wilma Gordon; Rodger Fogelquist, Melba Coleman; Jim Zeller and Beverly Briggs.

Alpha Psi Delta

Alpha Psi Delta chapter house will be the scene of an informal dance Friday evening from 8:30 to 11:30, when pledges of the fraternity entertain their dates at the fall term party.

Acting as chairman of the affair are Bob Marr, Joe Law, and Ed Linn.

Kappa Gamma Rho

Pledges of Kappa Gamma Rho fraternity will hold their party Friday night at 8 o'clock, with Clarence Edwards and Jack Hedgecock acting as committee heads for the event. The time and place for the affair has not yet been announced.

Instructors Will Appear In Program

Esther Miller, voice and public school music instructor, and Albert Keller, violin instructor, are to entertain at the annual Christmas program of the American Association of University Women Tuesday at the First Congregational church.

Miss Miller, soprano, will sing "Alleluja" by Mozart, "Snowflake" by Retchaninoff, and "I Wonder as I Wander," an Appalachian carol.

Keller will play "Praeludium," "Allegro Pugrati," and "Tambourin Chinois" by Kreisler, "Zephyr" by Jeno Hubay, and "Home on the Range" which he arranged for the violin and piano himself. They will both be accompanied by Professor Bennet Ludden.

The program will be followed by a reception sponsored by the AAUW.

First Frosh Party Shows Rook Talent

Over a hundred fifty freshmen attended their first class party held Saturday evening, according to Addyse Lane, class vice president and general chairman of the party.

Climax of the evening was an original radio skit, Life of Mabel Plushbottom, written by Betty Zo Allen, and starring Patty Brown and Bob Busick. Master of ceremonies Jerry Mulkey introduced the entertainment, which included vocal numbers, dialogue, and piano solos.

After refreshments of cake and punch were served, the group sang and danced. The hall was decorated with blue and silver streamers, which are class colors, and blue glass balls, horns, and tinsel hanging from the ceiling.

Upperclass Women Start Activities

Cap and Gown, senior women's honorary, met yesterday to plan a tea honoring all women who are attending Willamette on scholarships. The tea will be held Friday afternoon, January 11, with committees and details in charge of Jane Fitzsimons and other members of the organization.

Second semester the group will hold a function recognizing high point sophomore women.

The organization, which is made up of the five senior women chosen on the basis of service, scholarship, leadership and character, is under the presidency of Delvon Long. Other officers are Dorothy Hoar, vice-president; Ann Strother, secretary-treasurer; Miriam Day, historian; and Jane Huston Fitzsimons, financial manager.

VanWinkles Visit Schulze, Campus

Lt. and Mrs. Joe Van Winkle and their infant daughter were house guests last weekend at the home of Dean and Mrs. Daniel Schulze. Van Winkle, a grad of the class of '42, is on terminal leave from the marine air corps in which he is an instructor.

While at Willamette, Van Winkle was a member of Alpha Psi, and senior scholar for Dr. Robert M. Gatke in political science. Mrs. Van Winkle, the former Beulah Briggs, is also a Willamette alumnus. While attending WU she was secretary to Schulze.

The family is residing in Portland at the present time, but will move to Salem as soon as they find a place to live. Van Winkle hopes to enter law school in March.

The Amen Corner

Now that the play is over and everybody is once again living a slightly normal life, religious activities are getting on the ball. But lest we forget, the cast and the people that worked with the play have wanted to thank Dr. Rahe for his wonderful cooperation, time spent, and kindnesses shown to each and all of the students. It's hard to thank anyone who does so much for everyone, for his thoughtfulness can be spotted, not only at production times, but by examples all during the year—whenever he can be of help. And to top it all off, the play cast is spending the weekend at his beach home in Nelscott—what more could one ask?

Blossoming Out—

Although the Intervarsity fellowship has been meeting daily, they just had elections at their last meeting. The results were Phyllis Hood, president; Marion Van Leeuwen, vice president; Mary Fletcher, secretary-treasurer; and publicity chairman, Rose Ward. Besides their daily prayer meetings in the Little Chapel, they meet every Thursday from 8 to 9 for Bible study. These meetings consist of group discussions with no special leader. They are now starting to work on their constitution. All students are invited to both the daily meetings and weekly meeting.

How Come??

With the religious census just released, we old students note a decided change in the denominations and the way they rank. During the two year occupation of the navy the Methodists and Presbyterians were practically

even in number, with the Baptists and Catholics running a close second. Some of the smaller denominations had a great many more than at present, and the non-committals numbered clear up in the 90's. Guess this is just a quick change to the normal peace time standards of dear old WU.

Pageant Coming Up

The Wesley Fellowship is presenting a Christmas pageant this Sunday at 6:30 at the First Church. Since so many of the students are participating in the pageant, it would be most difficult to list them all, but Betty Jory Nicholson and Dorothy Deitrich are featured soloists, and Phillip Green is also a soloist from Portland. Nancy Hoak will be narrator for the story. After the pageant the group will go Christmas caroling, so if you want some real fun this Sunday, you know where to go. No, we didn't say the Rialto—Binigarl YM—

Still nothing.

Foot at Meetings—

The Interfaith council met Monday and elected officers for the year. President Vicky Jones; Secretary Carola Hayes; publicity chairman Phyllis Hood, and Chapel Program Assistant Marge Grenfell were the results. At that time they also discussed Wednesday chapels and the purpose of Interfaith council. They plan to have a supper meeting the first Tuesday in every month at 5:30. Also the council annually puts on a Christmas program in chapel the Wednesday before vacation. Marge Grenfell is in charge of Wednesday's chapel.

Pi Beta Phi Tea Honors Pledges

An intersorority tea, honoring all women pledges on the campus, was given Sunday by Pi Beta Phi pledges at the chapter house.

Decorations for the affair consisted of Greek letters of all four sororities with carnations and chrysanthemums decorating the rooms. Hours for the tea were from three to five.

General chairman for the tea was Kathleen Secord, with music arrangements under the direction of Edith Fairham. Music was provided by Betty Zo Allen and Carolyn Carson. Glenna Faye Miller handled refreshments and Carolyn Carson had charge of decorations. Luella Nichols handled invitations and Phyllis Freres was chairman of the cleanup committee.

Mrs. G. Herbert Smith and Mrs. James T. Brand of the Salem Pi Beta Phi alumni group, presided at the tea urns. Margaret Wood, pledge president; Barbara Cutler, pledge supervisor; Miss Secord; Mrs. Joseph Davidson, house mother, and Mary East, chapter president, were in the receiving line.

Hall Honors Birthdays

A formal dinner, given in honor of hall women having birthdays during the months of July, August, November and December, was held in the attractively decorated dining room of Lausanne hall last night. This is the first of the three birthday dinners held annually by the dorm residents.

Special guests were Prof. and Mrs. J. L. Knight, Dr. and Mrs. H. E. Rahe, Mrs. Ellen Foster, Mrs. Helen Goodenough, Mrs. Lulu Quick and Miss Lorena Jack.

On the committee planning the dinner were Dorothy Tasker, Mary Beth Snow and Olive May Hiday.

Pi Phis View Movies Of Settlement Tonight

Movies of the Pi Beta Phi settlement school in Gatlinburg, Tennessee, will be shown to Pi Beta Phi sorority members tonight at 7 o'clock in Collins Hall. The films include views of the school buildings, the students, work at the health center, and work with crafts at the school.

All students interested are welcome to attend the showing.

Mrs. McDermott's
Capital Coffee Shop
Home-Made Pies
Sandwiches
Ice Cream
Rm. 9, State Capitol Bldg.

When you think drugs think
Schaefer's Drug Store
135 N. Commercial St.

Gay's
Fine Candies
135 N. High Street

COONS

"Top Hat"



"Top Hat"

Special Soft Ice Cream - Delicious Hamburgers
1275 State Street - Salem, Oregon

Always Welcome
SEARS
ROEBUCK AND CO.

SCARFS
1.95

Fimsy fascinators... scarfs with that prized hand-woven look... soft, fluffy, warm and wonderful gifts... in snowy white or luscious colors.

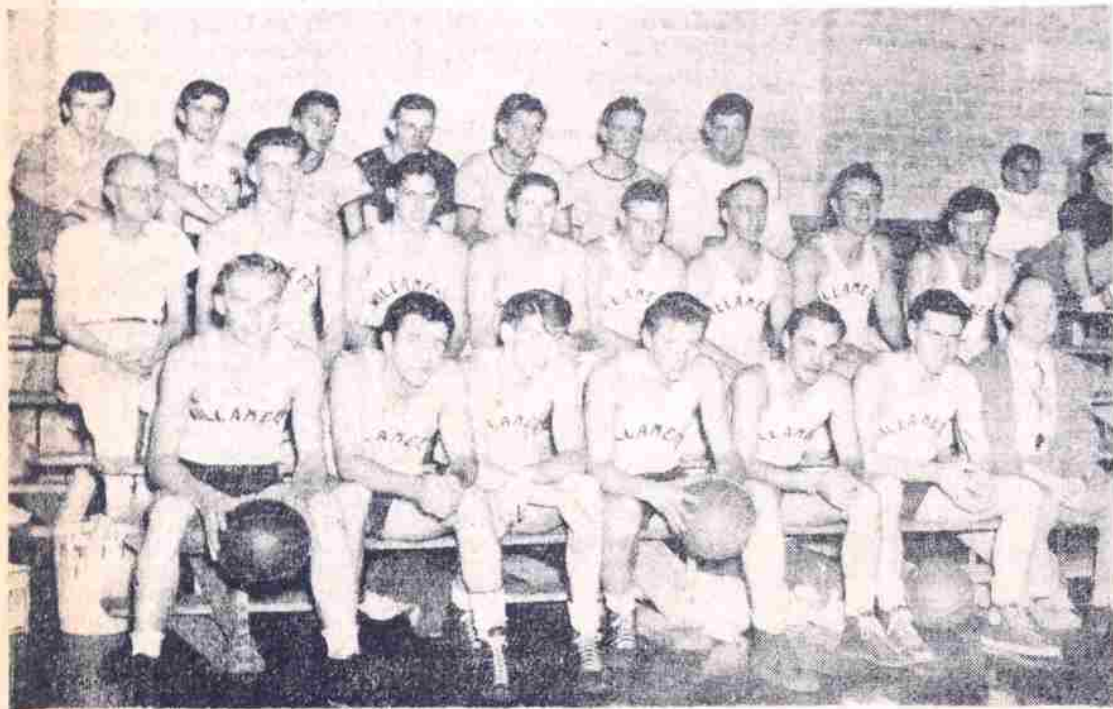
484 State Street, Salem

GIFTS OF GLAMOUR

Leathernecks Give 'Cats Rough Time

SPORTLIGHT

By Graham and Barbour



Bearcat hoopsters who saw action in the opening games on the local court: front row, left to right: Monte Weddle, Ed Fitzsimons, Max Maude, Bruce Barker, Don Ackley, Fred Graham; and Coach Lestle Sparks. Second row: trainer, Doc Ogden, Clarence Palmateer, Dale Bates, Courtney Jones, Marshall Barbour, Irving Miller, Doug Olds, Carl Butte. Third row: manager, Dick Craven, Tom Tullis, Joe Meier, Dale Reeves, Jack Shelton, Bob Fletcher and Larry Altree.

Willamette Hoopsters Lose Opening Tilt to KF Marines; Roughness Feature of Scrap

Willamette hoopsters recorded their first defeat on the home court Tuesday night when they succumbed to the powerful Klamath Falls Marines, 43-30, in what might be termed as a very rough contest. The 'Cats

Future Coach Task Drawing Much Interest

Applications for the recently vacated job of coach at WU continue to pour in to the university this week and are receiving number one priority of business on the campus. Many of the applicants have put in personal appearances to submit their applications, says acting athletic director Lestle J. Sparks.

The list of candidates to date has come to include some 12 to 15 names, many of them prominent members of the coaching profession. From the University of Oregon has come John Warren, freshman basketball coach and assistant football coach to "Tex" Oliver. Idaho's representative in the list is "Babe" Brown, assistant coach there in three sports. Then, too, have come such prominent high school coaches as Al Simpson from Medford, the school that had such a powerhouse this year.

Listed as a strong contender is Dean Walter E. Erickson who had only to step across the hall of Eaton to submit his application to Smith. Erickson, coach at Camas high school for four years before coming to WU as registrar in 1939, was a football star while a student at Willamette.

From the high school game is "Mush" Torson of Grant high in Portland. It is not known officially whether he has made application for the job, but he has made it clear that he is much interested in the proposition. Many others have submitted applications but have given instructions that their names not be divulged, or their identities have been withheld for some other reason.

According to Pres. G. Herbert Smith, careful consideration will be given to each individual before the final decision is made as to whom the new coach will be. Smith says that the university desires a proficient coach who will be well received in the surrounding area, a man with characteristics similar to those of ex-coach, "Spec" Keene.

held their own throughout the first half and well into the second half, but as the final minutes of the game approached the pace began to tell.

The Marine squad was small in stature, but what they lacked in height they made up for in spirit and shooting accuracy. Each man on the team was good in his own particular field and when combined they were just a bit too much for the 'Cats. John Lambert, leatherneck center, paced his team with ten points, most of which were scored from quite far out. Bill Vermet also put on a display of some very nice shooting in hitting the hoop for nine points for the GI's.

Marshall Barbour and Fred Graham did most of the scoring for the 'Cats in netting eight points each. The margin of the game proved to be Willamette's lack of offense, however, as they made only eight field goals during the 40-minute game. In foul shooting they shone—making a total of 14 out of the 21 received. Defensively, little Tom Tullis showed very well in his first contest with the varsity. His fast breaking abilities were outstanding also.

The most apparent feature of the tussle was the roughness shown by both quintets. The Marines were a little the rougher having 21 fouls called on them, while Willamette had no less than 17. Three of the Marines had four fouls on them when the final gun went off.

Willamette		Marines	
Barker 2	F	Benner	
Graham 8	F	9 Vermet	
Jones 1	C	10 Lambert	
Barbour 8	G	6 Adams	
Ackley	G	4 Slimek	
Miller 2	S	6 Zanetak	
Maude 1	S	5 McNeill	
Weddle 3	S	3 Kelling	
Palmateer 1	S	Lynch	
Fitzsimons 1	S	Konkle	
Tullis 3	S		
Bates	S		
Olds	S		
Butte	S		

Officials Lightner and Williams.

'46 Conference Play Begins Here Tuesday

Bearcat cagers will open their 1946 conference schedule against Pacific U on the local court Tuesday at 7:30. The game previously scheduled for a later date was moved up because of conflicting dates with other teams.

The game will be played with neither team completing their pre-season schedules so little can be predicted concerning a favored team. The one comparison that can be drawn is that Willamette was beaten by Camp Adair by four points while Pacific suffered a much greater defeat at the hands of the hospital team.

Pacific has a tall, fast squad which plays a fast-breaking game similar to that of the Bearcats. According to Coach Les Sparks his quint should be in shape to give the Badgers a good working over.

Wednesday night the 'Cats will oppose the formidable Camp Adair five in a return engagement here. The first game of the match saw the Bearcats defeated by a close margin, and they are gunning to better the first record.

Leo N. Childs, Inc. REALTORS

Mortgage Loans - Insurance
Phone 9261
Insurance For Every Risk
344 State Street

SWIM at the "Y"

for physical fitness

Gym Shoes
Basketball Equipment
Official Willamette Coat Sweaters

HOWARD MAPLE Sporting Goods

372 State Street
Salem, Oregon

Les Newman's

THE FRIENDLY STORE

Men's Furnishings - Work Clothing - Shoes and Luggage
Military Supplies

179 N. Commercial St. Phone 5508 Salem, Ore.

JUDO for WOMEN

Published with the protection of WOMEN in mind, by Lieutenant George O. Parker, USCER, former U.S. Dept. of Justice expert.

This booklet is well illustrated, attractively bound, one you will be proud to show your friends.

Now is your chance girls—get your copy today at the better magazine stands. Only \$1.00.

Personality ... Parade

Bruce Williams, former Bearcat grid and hoop star recently returned to Willamette to continue studies at law school.

Bruce graduated from Willamette in 1940, majoring in political science. After enlisting in '41 he served in the navy as a lieutenant, seeing action in the South Pacific theater. He established an amazing service record, win-



Lt. Bruce Williams, who has returned to WU law school, after serving four years with the navy in the South Pacific area.

ning the Navy Cross, the Air Medal, four Distinguished Flying Crosses, and the Purple Heart.

Williams was active in basketball as well as in football on the campus. He was on the championship basketball team in '40 and on the championship football squad in '37-'38.

When asked about his greatest thrill in football, he replied, "The last game of the season against Nevada when we won 49-7." It must have been quite a game.

Golds Beaten Badly by Fast Page Woolens

Coming up against the league-leading Page Woolen Mill's quintet in their second league tilt the Willamette university Golds dropped a 52-13 decision to their more experienced adversaries.

The Woolen Mills, composed of a bevy of ex-high school stars, many of them former all-stars, got off to a fast start, and piled up a halftime advantage of 26-4. The second half was much the same as the first although the college boys changed their defense and fought valiantly throughout.

*Led by Frank Page and McKee, who scored 16 and 14 points respectively, Pages played a ballhawking game that left the Golds flatfooted and more than a little bewildered. Jewell and Harrell led the Willamettes with four points apiece.

Although still in the early stages of league play, the Woolens showed themselves as the team to cop the City league title.

WU Golds		Woolens	
Jewell 4	F	6 Sebern	
Bonnington	F	16 Page	
Charlton 1	C	8 McRae	
Harrell 4	G	Quackenbush	
Zumwalt 2	G	14 McKee	

Subs: WU, Preiss 2, Bristow, Woolens, Salstrom 7, Henry 11, Bower.

Women's Hoop Preliminaries Start Season

Women's basketball got under way this week with the beginning of a preliminary tournament this week which will continue until Christmas, after which the major WRA basketball tournament will be held. Participating in the preliminary tournament are four teams made up of women who have turned out for afternoon practices, and one team from each of the freshman gym classes.

Basketball manager Marie Hildebrand has asked that any sororities or independent groups of women wishing to enter the tournament should organize their teams and notify her now.

An archery tournament has begun between the archery classes. During the next four meetings of the classes, each member will turn in her score for six arrows and in the end the totals will be figured and the winning class determined. Leading individual scoring to date is Jerry Nelson, followed by Wilma Gorton and Eunice Harvey.

Total membership of the WRA was released this week by president Muriel Oliver. Members are Dorothy Boyd, Gin Wiebe, Marie Hildebrand, Wilma Gorton, Ruth Barber, Betty Levine, Betty Willard, Bonnie Burnet, Marjorie Smith, Claire Toomb, Virginia Cannon, Nancy Trask, Lora Curtis, Ellen Forslund, Delora Doerfler, Juanita Moe and Barbara Crawford.

Faculty Drops 'Mural Tilt'

Tuesday's intramural tussle featured the Alpha Psi's and faculty, with Alpha Psi nosing out the fast faculty squad 23-19. Only two points separated the teams throughout, and a final pressure by the faculty failed to produce results. Brown was high scorer of the night, netting 11 points. Lineups:

Faculty		Alpha Psi	
Sparks 9	F	4 Burris	
Leiser 6	F	4 Lind	
Gilmore 2	C	11 Brown	
Graves	G	2 Law	
Brennen 2	G	2 Humphreys	
Woodburn 2	S		
Binegar	S		
Shaw	S		

Thursday Sigma Tau and Alpha Psi tangled in a rough basketball match at the local gym. The teams were evenly matched with a final burst of scoring punch by the Alpha Psi's giving them the game, 20-15. Burris led the Alpha Psi scorers with 10 points. Lineups:

Alpha Psi		Sigma Tau	
Mulkey 4	F	3 Fairham	
Burris 10	F	6 Zeller	
Kister 4	C	6 Person	
Humphreys 2	G	Barker	
Law	G	Nickoloff	
Wetstein	S	Stortz	
Marr	S	Spooner	

The remaining schedule is as follows:

- Tuesday—Faculty vs. Sigs.
- Thursday—Alpha Psi vs. Kappa.
- Tuesday—Faculty vs. Kappa.
- Thursday—Sigma Tau vs. Alpha Psi.
- Tuesday—Faculty vs. Alpha Psi.
- Thursday—Sigma Tau vs. Kappa.

Warriors Roll Over Frosh

Lebanon high school Warriors scored a decisive victory over the WU frosh Tuesday night, 46-8. The game was a preliminary to the WU varsity vs. Klamath Falls Marines game. The Warriors displayed some clever ball playing in defeating the frosh. High point man for the game was Lebanon's Hamilton with 11 points, Abbot and Cox of Lebanon followed closely with 8 points apiece. The frosh's eight points were made by Jewell, Skelton and Charleton.

Halftime score was Lebanon 21, frosh 4. Referee for the game was Gil Leiser. Lineups:

Lebanon 46		WU Frosh 8	
Abbot 8	F	4 Jewell	
Houghton 6	F	Bristow	
Cox 8	C	2 Charleton	
Ackeret 4	G	Harrell	
Hamilton 11	G	2 Skelton	

Subs: Lebanon, Fields 6, Hewett 1, Baldwin, Moody 2. WU, Preiss, Bonnington and Zumwalt.

French Class Views Film

Students in elementary French classes Wednesday morning saw movies of New Orleans shown by Earl Bradfield to acquaint them with the life and people of the city of French-American background.

Bradfield, stationed there for several months as an army colonel, showed the technicolor films to the class taught by Marion Morange, professor of French. Students in the elementary and advanced classes of Miss Morange are learning Christmas carols in keeping with the approaching holiday season.

Waller's Little Chapel Will Open for Use in January

The Little Chapel on the fourth floor of Waller should be open for use of all students by the end of January, according to Prof. W. Herman Clark, adviser for the group working on the project. Clark says of the Chapel, "It is hoped it will be respected as a place of worship and devotion by everyone, and can be left open for individual devotions and the use of small groups. Although the building of the Little Chapel has been promoted by the Methodist student group, it is for the use of any and all religious groups on the campus and will be administered by the Interfaith council."

A group of ten women on the campus, Lois Messing, Caroline Cooper, Eileen Lytle, Corinne Engdahl, Harriet Stewart, Evelyn Jory, Shirley Gribskov, Virginia Wiebe, Frances Sopp, and Jeanne Robinson are working to complete the project. The chapel is yet to be wired for lights and heating facilities must be installed.

The Little Chapel was begun in 1941 when students decided a place was needed on the campus where gatherings of various religious groups could be held at

any time. The campus was combed for a location and finally the corner of fourth floor Waller was decided upon. Since then work on it has been progressing, aided by money subscribed by students and donations from others. A pipe organ was donated by the Julia Webster estate, churches have sent in special collections, Mrs. Frank Jones donated an altar set and cross, and the university donated folding chairs.

Until the little chapel is completed it will be kept locked. Any group wishing to use it may obtain a key from Prof. John L. Knight or from Clark.

THE PIKE

138 So. Liberty

Frostys - Shakes
Sundaes - Cones
Ice Cream to Take Out

Open Daily to 11:00 P.M.
Open Sundays to 6:00 P.M.

Office Supplies

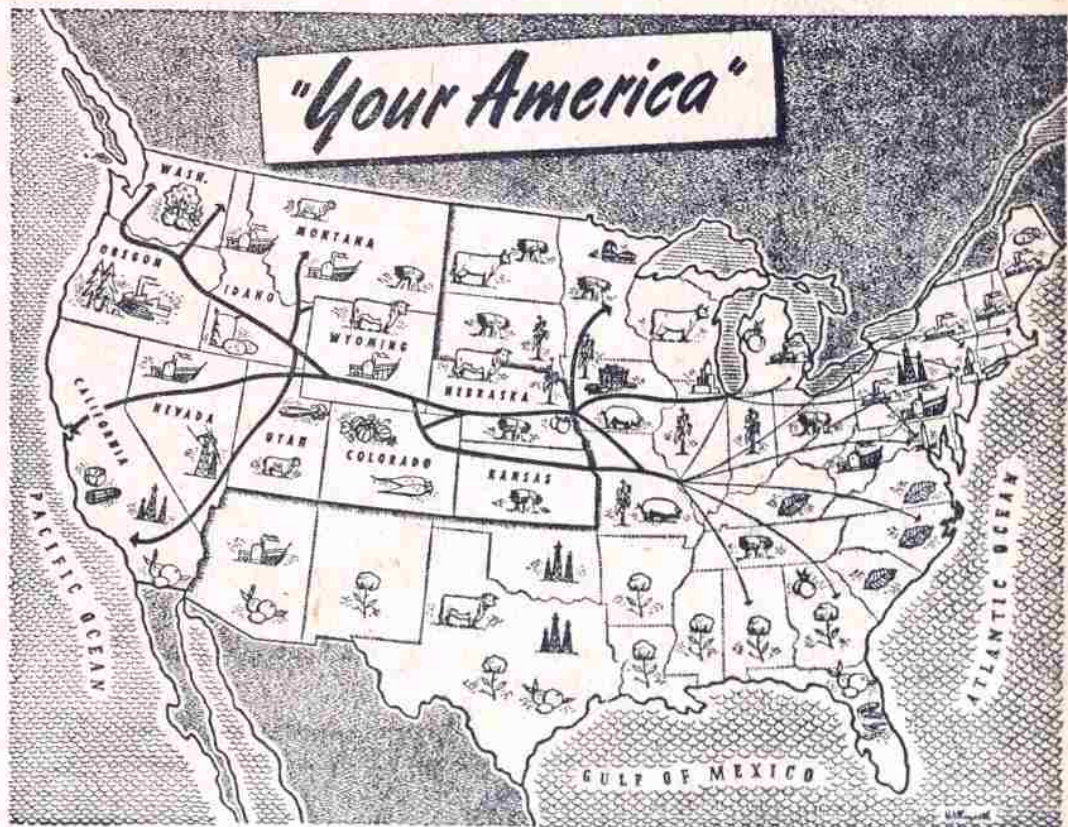
Books - Gifts

The Commercial Book Store

141 N. Commercial Street
Salem, Oregon

LAWRENCE A. BALLMER

TELEPHONE 4534



Map of "Your America" Showing Territory Served by the Union Pacific Railroad

For more than 75 years, Union Pacific has served eleven western states... been a partner in their development... transported their people and products. This vast territory produces a great variety of agricultural products which not only feed and clothe the nation but are converted into a myriad of industrial uses.

The same eleven states also are a source of other industrial materials such as ores, minerals, lumber and petroleum. Rivers have been harnessed—providing irrigation and power. There is dependable rail transportation.

This vast western area has materials and facilities required for postwar expansion. There is plenty of space for such expansion and for homeseekers who desire a healthful contented life among friendly people in scenic surroundings.

Union Pacific... the Strategic Middle Route, uniting the East with the mid-West and Pacific coast... will, upon request, gladly furnish information regarding available industrial and mercantile sites or farm lands in the territory the railroad serves. Address Union Pacific Railroad, Omaha, Nebraska.

JEWELERS • OPTOMETRISTS

Brown's

LIBERTY AND COURT STS.

SALEM'S LEADING CREDIT JEWELERS & OPTICIANS

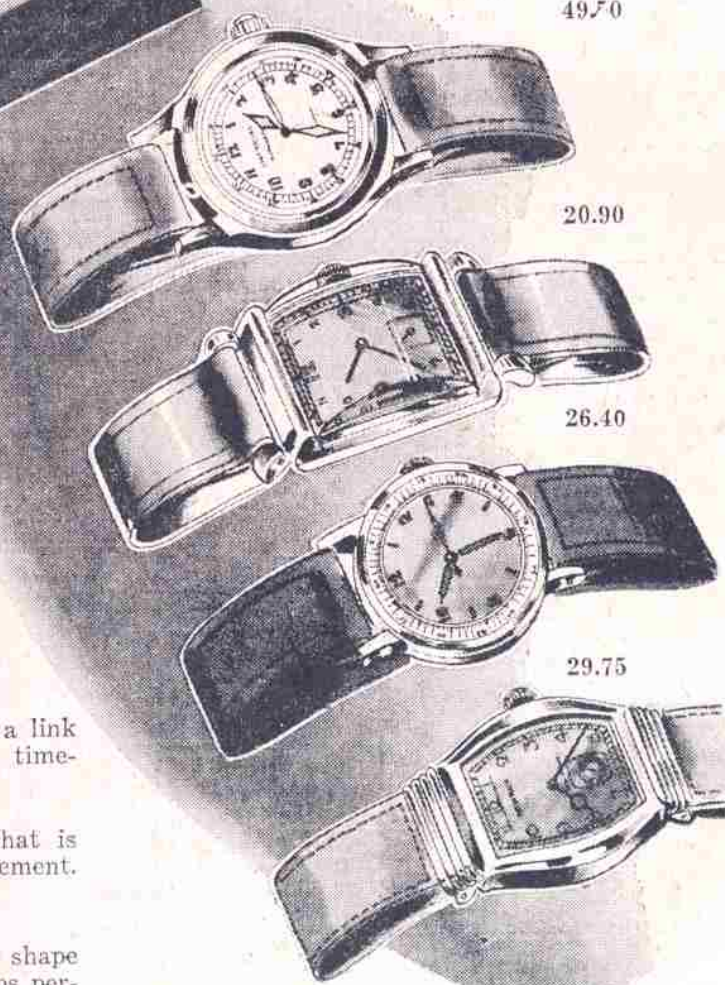
THE PROGRESSIVE
UNION PACIFIC
RAILROAD





A Watch Makes a Wonderful Christmas For Any Man!

1. BENRUS WATCH shaped to fit the wrist and with a link expansion bracelet. In 14-karat pink gold. Perfect time-keeping 17-jewel movement. 45.00.
2. WATER-PROOF, shock-proof, non-magnetic watch that is so popular with every man! Precision, 17-jewel movement. Sweep second hand. 49.50.
3. IMPERIAL Swiss made watch in a handsome square shape and curved crystal top. A 7-jewel movement that keeps perfect time. Priced 20.90.
4. IMPERIAL Swiss made watch in a perfect circle shape. Sweep second hand. Perfect time-keeping 17-jewel movement. A gift to please any man. 26.40.
5. BENRUS watch, official watch of famous Airlines! Shock-absorbent. Yellow gold-filled case. Perfect time-keeping 15-jewel movement. Gift priced at 29.75.



Jewelry
Shop,
Main
Floor

Miller's

