

## UNIVERSITY DIRECTORY

ASWU - Collegian - Wallulah .....	3-3088
Alpha Chi Omega.....	2-5522
Baxter Hall .....	2-9332
Beta Theta Pi.....	2-4577
Chi Omega .....	3-6417
Delta Gamma .....	3-8730
Bishop House .....	
General Manager, ASWU.....	3-3830
Lausanne Hall .....	3-9268
Phi Alpha .....	2-4524
Phi Delta Theta.....	3-6588
Pi Beta Phi.....	3-8760
Sigma Chi .....	2-4474
University Telephone Exchange.....	3-9266

Eaton Hall

Gymnasium

Health Office

Library

Science Hall

Infirmary

## OLD HISTORIC TEMPLE

(Alma Mater)

There's an old Historic Temple  
Rising grandly through the years  
Where the oaken-hearted fathers  
Drew their strength for strong careers.

Down the years its portals open,  
Gather wise ones to its fold;  
Breathes the spirit of the Westland,  
Card'nal emblem 'bossed with gold.

Spirit of the Golden Westland,  
Breathing through our fathers tears;  
Tells the story of the Temple,  
Bids us hope adown the years.

Sing, oh sing, of old Willamette,  
Sing while hearts are young and true;  
Sea to sea the chorus swelling,  
Dear old school, our W. U.

# Rook Information . . .



## WELCOME TO WILLAMETTE

Let me be the first to welcome you to your "home" for the next four years. Now that you have been officially accepted as a member of A.S.W.U. you are entitled to all the privileges and responsibilities of its organization.

Scholarship should be your primary interest. Willamette wants and needs good scholars and sincere effort will be rewarded.

Friendliness is well known on our campus, so don't hesitate to say "hello" even if you haven't been properly introduced. This especially applies to "W" men who are anxious promoters of school spirit.

We hope this book will give you a "Bird's Eye" view of Willamette, and be a "key" in your discovery of campus tradition and college life. Enjoy Willamette, participate in its activities and share in its work, for this is the way to belong.

The Editor.

## UNIVERSITY CALENDAR

### Fall Semester, 1949-50

September 14-17, Wed. to Sat.—Registration and orientation of new students.

September 19, Monday—Registration of returning students.

September 20, Tuesday—8:00 a.m., classes begin.

October 3, Monday—Last day to add new classes without petition.

October 28, Saturday—Annual Homecoming (Holiday)

November 11, Friday—10:00 a.m., Armistice Day Convocation. Classes dismissed from 10:00 to 12:00 noon.

November 19, Saturday—Last day to drop courses without penalty.

November 23, Wednesday—4:00 p.m., Thanksgiving Recess begins.

November 28, Monday—8:00 a.m., Thanksgiving Recess ends.

December 16, Friday—4:00 p.m., Christmas Recess begins.

January 3, Tuesday—8:00 a.m., Christmas Recess ends.

January 16-21, Monday to Saturday—Registration of second semester.

February 4, Saturday—Semester ends.



## Spring Semester, 1950

February 6, Monday—Registration and orientation.

February 7, Tuesday—8:00 a.m., Classes begin.

February 21, Tuesday—Last day to add new courses without petition.

March 31, Friday—4:00 p.m., Spring Recess begins

April 11, Tuesday—8:00 a.m., Spring Recess ends

April 11, Tuesday—Last day to drop courses without penalty.

May 22-27, Mon. to Sat.—Advance Registration for Fall 1950.

June 4, Sunday—Baccalaureate Service.

June 10, Saturday—Semester ends, Alumni Day.

June 11, Sunday—3:00 p.m., Commencement Exercises.

## TRADITIONS

### Homecoming

Returning Willamette alumni are honored by two days of festivities, commencing with the freshman leaf rake before dawn on Friday morning. Living organizations compete in a Homecoming sign contest, and a noise parade Friday night. On Saturday afternoon the Willamette Bearcats clash with the Pioneers of Lewis and Clark College in the traditional football game. In the evening a semi-formal dance is held, and the winners of the contests are announced.

### **Whip Whitman Banquet**

A banquet is held on the Thursday preceding the Willamette-Whitman football game with the purpose of bolstering up the spirit and rivalry necessary to win, and thus insure Willamette's possession of the coveted Battle axe for the following year. A cup is awarded to the class which presents the most original and spirited songs and yells.

### **Freshman Glee**

The Freshman class challenges the other three classes to a contest which is to consist of the presentation of one song and marching by each class. This colorful event, begun in 1912, has become widely known, and each year is witnessed by a capacity crowd of alumni and townspeople in the gymnasium. The winning class receives the Glee Banner of cardinal and gold. Many unique bets are made as to the winner and must be paid on the following Monday, in addition to the loser's "swim" in the Mill Stream. The fatal day has been designated as "Blue Monday."

### **Victory Bell**

The bell in the tower of Waller Hall tolls the score of each Willamette athletic victory.

### **May Weekend**

The living organizations are crowded with high school guests who have been invited to

view the festivities and become acquainted with the campus. Under the sponsorship of the Junior Class, the Weekend is crowded with annual traditions which include Inter-Sorority Sing, the May Morning Breakfast sponsored by the Y.W.C. A., Inter-Fraternity Sing, the Freshman-Sophomore Tug of War and Greasepole climb, Coronation of the Queen, the maypole dance, and a dramatic production. A formal ball in honor of the queen is held Saturday evening.

### **Kangaroo Court**

The climax to the reign of terror of the "W" men over the freshman class. Unfortunate freshmen who have sinned are penalized at this legal session which is presided over by Lettermen armed with hack paddles, bayonets, poison, and medieval torture machinery.

### **Flunk Days**

Juniors and Seniors are excused from their classes on certain days during the latter part of the Spring semester for their respective beach trips. Naturally the under-classmen are kept in the dark.

### **Award Day**

A chapel period is set aside near the close of Spring semester for the purpose of presenting awards for individual activity, scholarship, and athletics. The awards consist of cash prizes, scholarships, and memberships in honorary organizations.



## ROOK DICTIONARY

**Rook**—A newcomer to W.U. with the rank of freshman; generally considered inferior by those who have gone before.

**Soph**—A supreme egoist; one who goes out of his way to subordinate a freshman.

**Upperclassman**—A person who, after discovering that his Bible History credits cannot be transferred, is still here.

**A.S.W.U.**—Composed of all those who can afford a student body card.

**Rook Cap**—A repulsive article of clothing necessary to protect a freshman against execution, but not sufficient to deliver him from persecution. The caps may be purchased from those honest businessmen, the Lettermen.

**"W" Men**—An exclusive society of kindly philanthropists who are anxious that freshmen become educated and cultured by acquiring the knowledge presented in this book, and by conforming with W.U. tradition.

**Leaf Rake**—A favorite yearly project of the W Men. Freshmen are given the privilege of health-giving early morning exercise under the direction of physical education experts.

**Pushball Contest**—Each year freshmen are given this fair and square opportunity to get rid of their rook caps and ribbons.

**Glee**—A festivity for which one freshman may be elected to give orders to the other three classes as well as his own.

## ROOK RULES

1. Freshmen girls wear cardinal and gold ribbons in their hair.
2. Freshmen boys are required to wear rook caps on the campus.
3. Freshmen DO NOT wear cords on the campus.
4. Freshmen must carry the "Rook Bible" at all times, and are responsible for knowing its contents, including the Student Body Constitution.
5. Freshmen enter and leave Waller chapels by the front door only.
6. No one but seniors inhabits the Senior Bench.
7. Rise when the "Old Historic Temple" is sung.
8. All Freshmen attend Kangaroo Court when it is held.
9. All Students attend all rallies and games.
10. A SMILE AND HELLO are expected from all students at all times.
11. All students are good sports at intercollegiate contests.
12. Each student is a member of a Christian organization.
13. Willamette has many traditions sacred to our University, and we are depending upon you to preserve and cherish them.
14. The "W" club is aiding you in complying with these rules. A wise freshman will obey them.

## **PUBLICATIONS**

### **Student Directory**

The "Fusser's Guide" contains the names, addresses, and phone numbers of students, faculty, and living organizations. Edited by Margaret Atwood.

### **Student Handbook**

A summary of the customs, rules, and procedures of Willamette University for general student use and reference which is a new addition to campus publications.

### **Willamette Collegian**

The Collegian, published weekly, has proven itself to be one of the outstanding college newspapers of the nation by nearly twenty consecutive ratings of All-American. It is composed of news, features, society, and sports sections. Edited by Ellen Montague.

### **Wallulah**

Campus life and student achievement are set down in pictorial form and published in June of each year as the yearbook. "Wallulahs" become treasured reminders of college days. Edited by LuDene Hargrave.

## **Rook Bible**

The Rook Bible contains University traditions and activities, and is intended to acquaint freshmen with campus obligations and festivities. Also included are rules of the "W" club, which become law during the freshman year. The Rook Bible must be carried at all times by freshmen, who are responsible for knowing its contents.

## **Humor Magazine**

This is a new publication which was inspired last year by Don Carpenter and Russ Tripp. The magazine contains a series of pictures and witticisms intended to send the campus and townspeople into gales of hysteria.

## **Publications Board**

The publications board consists of the ASWU president, publications manager, Collegian and Wallulah editors, two faculty members, and the general manager and two members of ASWU. Publications budgets are subject to approval by the student council, as are budgets of all other activities.

## **A. S. W. U.**

The Associated Students of Willamette University is the organized student body of Willamette.

### **Student Council**

The Governing body of ASWU consists of the student body officers, class representatives, a representative from the Law School, Collegian Editor, General Manager, and a faculty member selected by the council.

### **Class Organization**

Each class is responsible for the election of its own officers. Freshmen officers for the second semester shall be in charge of Freshman Glee. Officers are nominated from the floor in class meetings.

### **Student Body Card**

Payment of Student Body dues each semester entitles the student to the following:

Admission to all school drama productions.

Admission to class social functions.

Tickets to Freshman Glee.

Weekly edition of the Collegian.

Upon presentation of both cards, and payment of an established fee, the student is entitled to the yearbook.



## **LIBRARY PROCEDURES**

1. The Library is regarded as a place for quiet study and research. Conversation and group study should not be carried on in the reading rooms.

2. An open stack system prevails in the library, thus making all but the rare books immediately available to all students.

3. Books in which reading assignments have been made by professors are kept on the reserve shelves.

a. Reserve books are charged out for a two hour period or for a 3-day period, depending upon the request of the professor placing books on reserve.

b. Two-hour reserve books, checked out an hour before library closing time for overnight use, must be returned by 9:00 a.m. the next college day.

c. Current magazines are treated as 2 hour reserve books. Older unbound issues may be charged for one week.

d. Reference books and bound periodicals do not circulate.

4. Library hours—

7:45 a.m. to 9:45 p.m. Monday-Thursday.

7:45 a.m. to 5:00 p.m. Friday and Saturday.

5. Books or periodicals overdue are subject to the following fines:

Two-week books, magazines,

pamphlets .....2 cents a day

State Library books.....5 cents a day  
 Three-day reserve books.....25 cents a day  
 Failure to check out reserve books for  
     overnight use .....25 cents  
 Two-hour reserve books—25 cents for first hour  
     and 5 cents per hour thereafter.  
 Fines are computed for every day except Sunday  
     and Holidays.

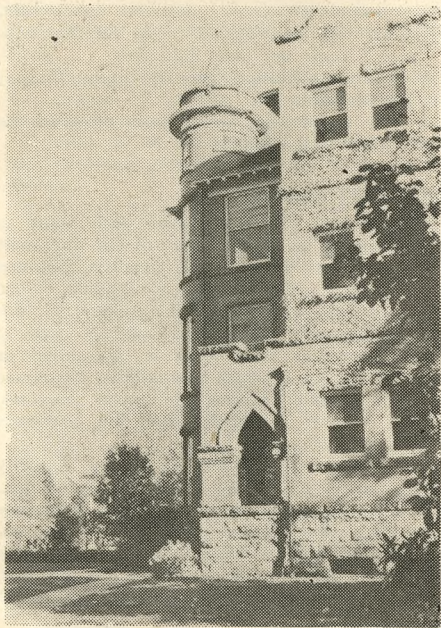
6. Two typewriters have been provided for  
 Student use in the Library.

### **UNIVERSITY CHAPELS**

Chapels are scheduled twice each week at  
 Willamette as an integral part of the University  
 program. These are assembly sessions designed  
 to bring to the student body outstanding artists,  
 recital groups, authorities and speakers on vari-  
 ous educational and cultural subjects. One of  
 these assemblies each week is designated as  
 Worship Chapel, at which time leading clergymen  
 of various denominations are guest speakers.  
 Special services are held during the Christmas  
 and Easter seasons.

Attendance is required of all at the Thursday  
 Chapel service held at the First Methodist Church,  
 and at the Tuesday Chapel held in the University  
 gymnasium. When any student shall have accum-  
 ulated more than a total of six unexcused ab-  
 sences from all such Chapels in any one semester,  
 he may be placed on probation for the remainder  
 of the semester.

# Administration . . .



Dear Fellow Student,

The fact that you have been accepted into Willamette University shows that you are above average scholastically and have qualities which our school desires in its students. We hope that you will continue to show the interest and leadership on our campus which you have shown in your high school. Willamette maintains a restricted enrollment so that you can work closely with your advisor and your professors to give you an educational program designed for your needs.

Your student body fees support a great number of student functions and activities which we know will interest you and in which we hope you will participate.

With 107 years behind it, Willamette has a number of traditions which are cherished by the stu-



dent body and all of those who have ever been students at the University. We know that you will enter into the Willamette spirit and learn to appreciate these traditions as we have.

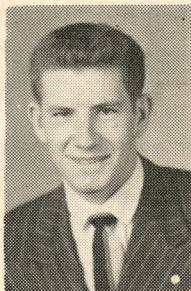
Your A.S.W.U. office is located on the ground floor of Waller Hall and its purpose is to be of help to the student body. Stop in often so that we may be of service to you.

Cordially,

Russ Tripp

A.S.W.U. President





**ROGER ADAMS**  
First Vice-President



**CHARLES PATTERSON**  
Member at Large



**ARTHUR DIMOND**  
Second Vice-President



**PAT HOWARD**  
Secretary

To the New Students of Willamette University:

It is always a great pleasure to welcome the newest members of the Willamette University family to the campus.

In choosing Willamette you have selected a University rich in tradition and outstanding in accomplishment. You enter into an educational heritage which the University has built in over one hundred years of service. We are jealous of this heritage and it is expected that each new student will make a contribution to the good name of Willamette.

On this campus you will find high standards of scholarship which will challenge the best in your intellectual capacity. You will find opportunities for lasting friendships, and you will participate in personality developing activities. Willamette offers you the opportunity to make these next four years the best four years of your life.

Sincerely,

G. Herbert Smith  
President



Welcome to the Class of 1953:

It is good to have you as members of the Willamette family. We know that these family ties will become stronger and stronger during the next four years. A great new world of friendships is opening up before you. Many of these will last for your life time. College life has many sides — spiritual, intellectual, and social. Be sure to develop all of them in true proportion. Only in this way can you become the leaders which we expect you, as Willamette men and women, to become.

Sincerely,

Robert D. Gregg

Dean of the College of  
Liberal Arts.



I am happy to welcome the class of 1953 to all of the joys, privileges and responsibilities which being a member of the Willamette University campus implies. When we meet in September you will have already accepted the challenge which the curriculum offerings of the college present.

Plan now at the beginning of your four year program to get the most possible out of all the college has to offer you. Before you know it you will be a senior.

I hope very soon to know you personally. I urge you to make every effort to come to my office and introduce your self to me. My door is open to you at any time if you are worried about finances, scholarship troubles, and illness of some sort, or something else that will detract from your ability to do high-grade work.

Welcome to Willamette University and its many opportunities.

Regina L. Ewalt  
Dean of Women



The ambition of the Dean of Students is to become acquainted with every student on the campus and Dr. Withey seems to have the best formula for connecting the right name with the right face. Along with his friendliness, this has won him a special distinction on the Willamette campus.

Although official duties, such as administration of vocational tests, providing of housing for students both on and off campus, finding part time employment for those who need it, supervising of the counseling and advisory system, administration of attendance records are time consuming, he manages to find time for personal counseling and assistance to the social groups of the campus.

Raymond A. Withey

Dean of Students





All funds for use in student body, class activities, and all other campus organizations are handled through Dr. Schulze's office. Duties as A.S.W.U. General Manager also include serving as financial advisor to the Student Executive Council. Because of his genuine helpfulness the various groups on campus are able to meet their budgets. In addition to his advisory position, he is also professor of German.

Daniel H. Schulze  
A.S.W.U.  
General Manager



## **HAROLD B. JORY**

### **University Registrar**

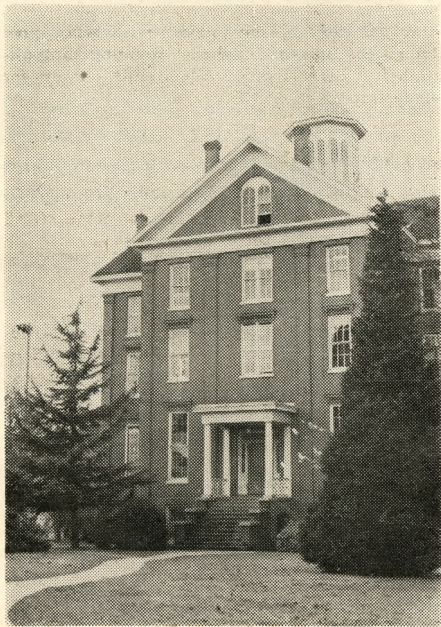
The registrar not only registers new students, but keeps statistical watch over approximately twelve hundred school careers. In his office grades are recorded, exam schedules prepared, and statistics compiled. This versatile office also edits the catalog, is the Vet's headquarters, and acts as a placement service for graduate students

## **CHARLES PAETH**

### **Director of Admissions**

Mr. Paeth, a recent addition to Willamette's staff, directs the office in which applications for admission are considered and which sends out information to prospective students. Mr. Paeth is also Secretary of the Committee on Scholarships and Grants.

# Organizations . . .



## **ACADEMIC**

### **Alpha Kappa Nu**

Ten per cent of the senior class who have attained the highest scholastic standing throughout their four years in college are chosen for membership.

### **Alpha Lambda Delta**

This is a national honor society for freshmen women who have earned a grade point of 3.5 or above their first semester of college.

### **Blue Key**

Outstanding character, scholarship, student activities, leadership, and service are the qualifications for membership in this national honor fraternity.

### **Delta Theta Pi**

This is a national law fraternity which has been on the Willamette campus for twenty-one years. The purpose of the Wolverton Senate chapter is the promotion of high scholarship united with the advancement of justice and high ideals in the legal profession.

### **Mu Phi Epsilon**

Membership of this honorary is limited to women music majors with high scholarship standing. Its purpose is the advancement of music in America.

### **Theta Alpha Phi**

Upperclass students who show outstanding ability in dramatics or direction and management of student productions compose the membership of this honorary. Its purpose is to foster dramatic interests and to unite socially those with histrionic talent.

### **Tau Kappa Alpha**

A national Forensic fraternity which is a member of the Inter-Collegiate Forensic League. Members are chosen from debate and oratorical squads. The chapter sponsors debates and oratorical contests.

### **Phi Eta Sigma**

A national honor society for freshmen men who have earned a grade point of 3.5 or better during their first semester of college.

### **Sigma Delta Pi**

Students of Spanish who meet the requirements in their Spanish courses, maintain a high scholastic standing, and are above Freshman rank are eligible for this national Spanish honorary.



## **ATHLETICS**

### **Ski Club**

Willamette ski enthusiasts have organized a club which meets twice monthly to plan ski trips to Mt. Hood and Hoodoo.

### **W. A. A.**

It is the purpose of the Women's Athletic Association to provide sports for all girls and to promote interclass contests. Women interested in athletics as well as P.E. majors are active participants in sports including tennis, softball, archery, volleyball, swimming and badminton.

### **"W" Club**

All campus lettermen in varsity athletics are "W" Club members. They encourage a spirit of good sportsmanship at all Willamette functions and enforce the observance of all W.U. customs and traditions. Special attention and training is given to Rooks. Chosen annually from the Freshman class is a Varsity Queen and court.

## **MUSICAL**

### **A Cappella Choir**

The Willamette A Cappella Choir, organized in 1939 is made up of sixty men and women under the direction of Dean Melvin Geist. Outstanding among its activities are the annual Messiah and the Spring Concert Tour.

## **University Band**

The University Band is an aid in creating pep and spirit at ball games. A Spring concert tour is presented each year by this group under the direction of Maurice Brennen.

## **University Orchestra**

The orchestra provides musical interludes at plays and other school functions under the direction of Frank Fisher.

## **RELIGIOUS**

### **Inter-Faith Council**

Representatives from religious groups compose the Inter-Faith Council on the campus.

### **Campus Organizations**

Inter-Varsity Christian Fellowship—Interdenominational.

Westminster Fellowship—Presbyterians.

Wesley Fellowship—Methodists.

Canterbury Club—Episcopalians.

Catholic Club—Catholics.

## **SERVICE**

### **Alpha Phi Omega**

Epsilon Kappa chapter of this national Scout honorary maintains several projects on our campus. Members are chosen from outstanding men in all classes.

### **Beta Alpha Gamma**

A service organization of outstanding sophomore women who "serve" by ushering at football games, plays, and concerts, assist at voting polls, and maintain projects.

## **Cap and Gown**

An honorary society composed of Senior women possessing outstanding qualities of personality, service, scholarship, leadership, and Christian ideals. Activities include benefit socials, banquets, and cultural trips to various places.

## **Sigma Alpha Chi**

A service organization of outstanding sophomore men who donate their efforts to the student body by ushering, assisting at the voting polls, and contributing general aid.

## **SOCIAL WELFARE**

### **American Red Cross**

The W.U. chapter cooperates with the local headquarters in planning and teaching safety programs including first aid, life saving, and nutritional courses.

### **International Relations Club**

This campus organization studies the problems of peace and welfare among the nationalities of the world. Prominent speakers lend new ideas to this group for the furtherance of better international relations. Correspondence with students of other nationalities is a popular group activity.

## **Y. M. C. A.**

With a pattern of activities similar to that of the Hi-Y in high schools, the Y.M.C.A. has a two-fold purpose, a program of service to the University and the student, and the furtherance of Christian principles and fellowship.

## **Y. W. C. A.**

The Y.W.C.A. follows an extensive service program consisting of the following activities: Big Sister program, teas, formal receptions, faculty firesides, group discussions, scholarship fund drives, and recognition service.

# Living Organizations



## FRATERNITIES

It was in the year 1920 that the first local fraternities were established on Willamette's campus. The organizers were World War I veterans who were determined to experience fraternity life as a result of observation of the comradeship among fraternity brothers in the Service.

Five local fraternities came into existence but by 1926, three remained to perpetuate their organizations through the Willamette Centennial year, 1942. Later another fraternity was added to the group.

Three local sororities also came into existence in the post War I years—Alpha Phi Alpha, Beta Chi and Delta Phi. In 1943 a movement was started for National fraternities at W. U. resulting in the affiliation of four sororities with National organizations.

In the Fall of 1946 after the World War II, the men's fraternities prepared to follow the affiliation movement. There are now four National organizations on the campus.

Housing for fraternities is provided by the \$750,000 structure of Baxter Hall. The first plans for the new residence hall were presented by President Smith of the Board of Trustees. Since then, through generous contributions by friends



of the University, the four fraternity wings and Baxter Hall have been completed.

It is only appropriate that the new hall be named in honor of Dr. Bruce Richard Baxter for his generous contributions to the University during his term of Presidency from 1934 to 1940.

### **LIVING REGULATIONS—WOMEN**

The following regulations apply equally to both dormitories and the Sorority living groups.

To promote a spirit of democracy and new friendships all women on the campus are required to live in one of the dormitories during their first year at Willamette.

#### **Important Rules to Remember are—**

Sign out if out after 7:30 p.m.

Sign in upon return.

Must be in by 10 p.m. week nights.

Allowed until 10:30 p.m. Sundays.

Midnight Friday and 12:30 a.m. Saturday.

#### **Quiet Hours:**

Monday through Friday from 1:20 p.m. through 4:05 p.m. and 7:30 p.m. on, except Friday. No quiet hours enforced on Saturday, Sunday 3 to 5 p.m. Radios low at all times.

Late permissions are granted for special occasions. When attending late campus functions all women must be in twenty minutes after the events are over.

## **Alpha Chi Omega**

### Beta Chi Chapter

Betty Ferguson .....	President
Pat Howard .....	Vice-President
Margaret Austin .....	Secretary

## **Chi Omega**

### Nu Delta Chapter

La Fyrne Showacy .....	President
Wesley Woodard .....	Vice-President
Lisbeth Trullinger .....	Secretary

## **Delta Gamma**

### Beta Pi Chapter

Inie Lou Wilhelm .....	President
Earlyne Foley .....	Vice-President
Gloria Stone .....	Secretary

## **Pi Beta Phi**

### Oregon Gamma Chapter

Avis Roberts .....	President
Diana Arpke .....	Vice-President
Beatrice Nagel .....	Secretary

## **DORMITORIES—WOMEN**

Present dormitories are Lausanne Hall, 220 S. Winter, and Bishop House. Officers governing these organizations are elected at the beginning of each semester by the student residents.

## **PANHELLENIC RUSH RULES**

Complete rush rules for W.U. appear in booklet sent to all freshmen women.

### **National Principles**

1. Rushing parties may not be scheduled which conflict with the regular University class program.
2. The Panhellenic shall agree upon a rushing program in which there is a reasonable and sane expense limit.
3. Panhellenic shall adopt a system of bidding and pledging which will not invite publicity.
4. All prospective members, participating in rushing, must be registered by the local Panhellenic Council.
5. Rush functions after the opening of colleges must be confined to the individual chapter houses.
6. Violation of Rush Rules must be reported not later than the first regular meeting of Panhellenic after rushing is concluded.

### **Eligibility**

1. All regularly enrolled women students of Willamette University who are registered for

twelve or more semester hours of academic work and who are not on probation, are eligible for rushing and pledging.

2. Primary consideration will be given students who plan to graduate from Willamette.

## **INDEPENDENTS**

The Independent Organization on Willamette's Campus is composed of both men and women students who participate in student body activities in much the same manner as the living groups. Their goal is to advance the individual, and they often invite guest speakers to attend their meeting and discussions to help promote their purpose.

Lawrence Miller .....President

## **LIVING REGULATIONS—MEN**

The following policies apply to men's living groups at Willamette:

1. The use of liquor is prohibited. Liquor is not to be brought into the men's residence halls.
2. Coats and ties will be worn to evening meals except at one regular time a week which may be designated by each group.
3. Study hours will be observed 7:30 to 10:00 P. M. Sunday through Thursday. On Wednesday, study hours will be from 8:30 to 10:00 P. M. Quiet hours begin at 10:30 P. M.

During the morning hours (8:00 to 11:00) and

afternoon hours (1:00 to 4:00), the residence holls should be quiet for those who care to study or rest.

4. The present long standing policy of Willamette University is that there be no smoking on the campus. In view of the occupation of the new residence hall quadrangle for men, this policy will be interpreted to permit a man to smoke in his own room provided it is not objectionable to his roommate, and to permit smoking in the game rooms or recreation rooms of the respective units. In each fraternity this is the room between the main lounge and the dining rooms, and in Baxter Hall this is the area in the lower level directly below the main lounge.
5. Women shall be entertained only when the Head Resident or a substitute acceptable to the office of the Dean of Students is present. Women will be allowed on the first floor public rooms only. The hours during which young women may be entertained in the men's residence hall quadrangle, including Baxter Hall and the fraternities are set as follows: Wednesday, 5:30 to 8:30 p.m. Friday, 4:00 to 5:30 p.m. and 7:00 to 11:30 p.m. Saturday, 7:00 to 12:00 m. Sunday, 1:00 to 4:00 p.m.

The above hours are in effect except when a home varsity inter-collegiate contest is scheduled, and then the houses are only to be open after the games until the hours indicated.



## **INTER-FRATERNITY GOVERNMENT**

### **Rushing Rules**

Subsequent to registration, at a time set by the Inter-Fraternity Council, each new registering man shall be given the opportunity to signify his choice of fraternities. This preference shall be written and filed in the office of Dean of Students. Official notification shall issue from the Dean's office to each Fraternity respectively of the names which correspond to the list it has submitted.

No man shall be offered the opportunity to pledge any Fraternity until the time of pledging set by the Inter-Fraternity Council and until he has completed registration. Completion of registration means the making of final arrangements with the business office in regard to payment of tuition. Any violation of this provision on the part of any Fraternity shall mean the forfeiture of the right to pledge the man in question for a period of thirty days.

### **Scholarship Rules**

For purposes of determining scholarship, a list of active, inactive, and dropped men will be turned in to the Dean by each fraternity on Friday of the fourth week of each semester. Any subse-

quent drops or inactive men will count towards scholarship. Inactive men must declare their active intentions before this date or remain inactive for the semester.

## FRATERNITY OFFICERS

### Beta Theta Pi

Kenneth Holmes .....President  
Bill Peyton .....Vice-President  
Gil Oliver .....Secretary

### Phi Delta Theta

Larry Stocks .....President  
Bob Skirvin .....Vice-President  
Bob Hearn .....Secretary

### Sigma Alpha Epsilon

Howard Lorenz .....President  
Gordon Pratt .....Vice-President  
Rex Edmondson .....Secretary

### Sigma Chi

Gordon Ferrell .....President  
Bill Ross .....Vice-President  
Howard Mader .....Secretary

## CHURCH DIRECTORY

- Bethany Reformed—Capitol and Marion.
- Calvary Baptist—Liberty and Miller.
- Castle Chapel, United Brethren—Nebraska and 17th.
- Christ Evangelical, Lutheran — State, between 17th and 18th.
- Church of Christ—1489 N. Cottage.
- Church of God—1346 No. Church.
- Church of the Latter Day Saints—Chemeketa and Cottage, Salem Women's Club.
- Church of the Nazarene—Center and 13th.
- Court Street Christian—Court and 17th.
- First Baptist—Liberty and Marion.
- First Christian—High and Center.
- First Church of Christ, Scientist—Chemeketa and Liberty.
- First Congregational—N. Cottage and Marion.
- First Evangelical—Marion and Summer.
- First German Baptist—Cottage and D.
- First Methodist—State and Church.
- First Presbyterian—Chemeketa and N. Winter.
- First United Brethren—Mission and 12th.
- Highland Friends—Highland and Church.
- Immanuel Baptist—Hazel and Academy.

Jason Lee Memorial, Methodist—Jefferson and  
N. Winter.

Mill Street Methodist—Mill and 15th.

Seventh Day Adventist—Hood and Summer.

South Salem Friends—Commercial and Wash-  
ington.

St. John's Lutheran—16th and A.

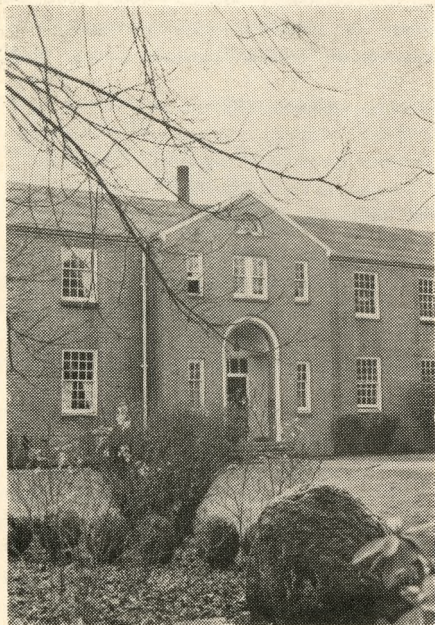
St. Joseph's Catholic—Cottage and Chemeketa.

St. Paul's Episcopal—Church and Chemeketa.

St. Vincent de Paul, Catholic—2200 Myrtle.

West Salem Methodist—State and Third.

# Athletics . . .





## CHESTER STACKHOUSE Athletic Director

Chester R. Stackhouse, assistant track coach at Michigan from 1939 to 1945 and director of athletics and head football, basketball and track coach at Lincoln University for the past two years, comes to Willamette at athletic director and head football and track coach. We are looking forward to a victorious year under his guidance.



## JOHN LEWIS Baseball! and Basketball! Coach

John Lewis made a fine showing in his second year as coach for the Willamette Bearcats. Our basketball team tied for first place in the Northwest Conference with Lewis and Clark.



## **FOOTBALL SCHEDULE FOR 1949**

Sept. 17—University of Idaho at Moscow

Sept. 23—Central Washington College of Education at Ellensburg

Oct. 1—Chico State at Salem

Oct. 8—College of Idaho at Caldwell

Oct. 22—College of Puget Sound at Tacoma

Oct. 28—Lewis and Clark at Salem  
(Homecoming)

Nov. 5—Linfield at McMinnville

Nov. 11—Whitman at Salem

Nov. 18—Pacific at Salem

## **ATHLETIC ACTIVITIES**

### **Stadium and Grounds**

At present the scene of W.U. football games is Sweetland Field which is located on the University grounds. It is hoped that the new grandstand,

with a seating capacity of 3500, will be completed on Bush's Pasture to make it possible to play football on the newly completed athletic field. During the past spring the new field was used for baseball and track.

### **Intercollegiate**

Willamette is a member of the Northwest Conference and has adopted the Conference rules for the regulation of its athletics. It is the plan of the administration to make University athletics clean and productive of real benefits to the participant under the personal supervision of the Director of the Athletics and under the jurisdiction of the Athletic Board of Control.

### **Intramural**

Intra-mural sports are organized as a division of the Department of Physical Education. This part of the program is designed to provide competition for those who do not participate in the Varsity Sports. The sports promoted parallel those offered in required classes so that instruction may be provided.

Watch for notices that appear in the Collegian and in the Bulletin Board in the Gymnasium regarding meetings of the Intra-mural Managers Schedules, and Entry Lists.

## PEP ORGANIZATION

The pep organization consists of A.S.W.U. under the direction of the Yell team, Song Squad, and Pep Cats. The university band also plays an important part in the preservation of good school spirit.

It is important that every student know the songs and yells thoroughly and cooperate with the yell team by attending all games and rallies.

## VARSITY YELLS

### Center, End, Tackle, Guard.

Center, end, tackle, guard  
Hit that line, hit it hard  
Hit 'em high, hit 'em low  
Come on Bearcats, Let's go!

### Yea Cardinal

Yea Cardinal  
Yea Gold  
Yea Team  
Knock 'em cold!

### Spell It

Be . . ar . . ca . . ts (slowly)  
Be . . ar . . ca . . ts (fastly)  
Be . . ar . . ca . . ts (fast)  
Be . . ar . . ca . . ts (very fast)  
B E A R C A T S (SHOUT)

## VARSITY SONGS

### I LOVE WILLAMETTE U.

I love Willamette U.  
I love her campus too;  
I love her Profs, so good and true,  
I love her spirit real true blue.  
I love the old mill stream,  
I love to sit and dream;  
I see it all in shadows cool,  
I love our dear old school.

### FIGHT, BEARCATS, FIGHT

Fight, Bearcats, fight!  
A victory for W. U.  
Cardinal and Gold, victorious of old  
Will give us a spirit ever true.  
Fight, fight, fight!

Cardinal courage show  
And Gold is our faith so true  
We shout our war cry out to you  
Come on and fight, fight, Fight!



## INDIANS KNOWN TO JASON LEE

Oh, the Indians known to Jason Lee,  
Went out one night on a little spree  
They organized a rhythm band  
That soon was known throughout the land  
Then they went off to college  
And they took their band along.  
With sharps and flat and feathers in their hats  
They beat their big tom toms;  
The big chief smiled;  
The squaws went wild  
As they sang their college song  
Woo-oo Woo-ooo Woooo-ooo  
At Willamette U, each gal and lad  
Has the same kind of rhythm that the Indians  
had  
The ren man's ghost is with us still  
And if we don't whoop, we're sure they will.

## CANNIBAL KING

A cannibal king with a big nose ring  
Got stuck on a Zulu maid,  
And every night when the moon shone bright  
Across the canal he'd wade  
To hug and kiss his dusky miss  
Out under the big bay tree,  
And when they met they sang a duet  
That sounded like this to me  
Oh, Jason Lee, socretty boo-ya  
Oh Poppa Waller, Chenickety umpa  
Umpa-Umpa-Um.

## FIGHT SONS OF OLD WILLAMETTE

Fight, sons of old Willamette  
Fight, 'til the battle's done;  
With a valor ever bold  
For the Card'nal and the Gold  
Fight 'til the vict'ry's won!  
Many hearts are standing by you  
With a spirit ever true  
Fight with courage never dying  
Fight! Willamette U.

## ROAR WILLAMETTE

Roar, Roar, Roar, Roar, Roar, etc.  
Roar Willamette, win today  
Show them all the Bearcat way  
Fight, fight for W. U.  
Knock 'em down, pick 'em up  
Knock 'em down again.  
Here's the axe to chop them down  
Cardinal Gold will go to town  
Ring the bell for victory  
Oh, stand up, and give a cheer  
Let them know Willamette's here  
Fighting to win this game.

## AROUND THE CAMPUS

Around the campus of old Willamette  
We'll shuffle the cards and roll the bones  
along, along, along.

Around the campus of old Willamette,  
We'll shuffle the cards and roll the bones  
along.

Slinga da ink, slinga da ink,  
Slinga da ink and pusha da pen along,  
along, along.

Around the campus of old Willamette,  
We'll slinga da ink and pusha da pen along,  
Worry the Profs, worry the Profs,  
Worry the Profs and kid them right along,  
along, along—

Boys sing:

Fuss the girls, fuss the girls,  
Fuss the girls and kid them right along,  
along, along—

Girls sing:

Vamp the boys, vamp the boys,  
Vamp the boys and kid them right along,  
along, along—

W. U., W. U.,

W. U. will help you right along, along, along.

Each class insert its own number:

'48, '48 (shout)

'48 will help you right along, along, along.

# Constitution . . .



## **A.S.W.U. CONSTITUTION**

as amended in 1946

### **PREAMBLE**

We, the students of Willamette University, in order to provide an organization for the control of all matters of general student concern do hereby ordain and establish the following constitution.

### **Article I—Organization**

Sec. 1, Name. The name of this organization shall be the Associated Students of Willamette University.

Sec. 2, Membership. All registered students of Willamette University shall be members of the Association upon payment of the student body fee.

### **Article II—Officers**

Sec. 1. The officers of the Association shall consist of the president, the first vice president, the second vice president and the secretary, all of whom shall be chosen from the two upper classes of the following year and shall be elected for a term of one year.

Sec. 2. The president shall preside at all meetings of the Association, shall be chairman of the Student Council, and shall perform the usual duties pertaining to this office.

Sec. 3. The first vice president shall assume the duties of the president in the absence of that



## **CONSTITUTION**

officer and shall act as chairman of the Social Activities Board.

Sec. 4. The second vice president shall be in charge of all ASWU elections.

Sec. 5. The secretary shall keep a record of all meetings of the Association and of the Student Council and shall perform the usual duties pertaining to this office.

### **Article III—Meetings**

Sec. 1. Meetings of the Association shall be held upon the call of the president on his own initiative, upon request of the Student Council, or upon petition of fifty members of the Association in which they state of object of the desired meeting.

Sec. 2. Twenty-four hours notice shall be given for all meetings.

Sec. 3. Fifty-one percent of the members of the Association shall constitute a quorum.

### **Article IV—Elections**

Sec. 1. The elections shall be held at least one month before the close of the second semester, the date to be set by the Student Council. All candidates for the elective offices of the Association shall be nominated by petition of twenty-five members to the student body. The petitions must be presented to the Student Council at least one week before the election; whenever possible at



## **CONSTITUTION**

least two candidates for each office shall be named.

Sec. 2. The Australian ballot system shall be used for all elections.

Sec. 3. All members of the Association whose names appear on the official poll books shall be entitled to vote.

Sec. 4. The voting hours shall be set by the Student Council and published one week before election day.

Sec. 5. All officers shall be elected by a majority vote and in case no candidate receives a majority the Student Council shall call a new election within one week; at this election only the names of the two candidates receiving the highest number of votes shall appear on the ballot.

### **Article V—Vacancies**

Sec. 1. All vacancies which may occur in the elective offices of the Association shall be filled by the regular popular ballot at a special election.

### **Article VI—Funds**

Sec. 1. Funds of the Association shall be derived from money received in the form of dues paid upon registration in Willamette University and from such other receipts as may result from the activity program of the Association.

## CONSTITUTION

Sec. 2. Student body dues are fifteen dollars per person per semester, five dollars of which will be paid directly to Willamette University for the support of Athletics.

Sec. 3. Association dues shall be allotted as follows:

- (a) 35 percent to Publications
- (b) 10 percent to Office
- (c) 3 percent to Willamette University
- (d) 11 percent to Social
- (e) 4 percent to Class fund
- (f) 7½ percent to Forensics
- (g) 7½ percent to Drama
- (h) 11 percent to Music
- (i) 1 percent to May Week-end
- (j) 1½ percent to Freshman Glee
- (k) 1 percent to Darkroom
- (l) 3 percent to Law School
- (m) 4½ percent to Reserve Fund

Sec. 3. Funds of the Association shall be administered as outlined in Article IX, below.

### Article VII—Publications

Sec. 1. The official publications of the Association shall be the Collegian, the Wallulah, the Student Handbook, the Fusser's Guide, and such other publications as may be approved by the Student Council as recommended by the Publications Board.

## CONSTITUTION

### Article VIII—Student Council

Sec. 1. The Student Council shall consist of the president, the two vice presidents, the secretary, a member of the faculty selected by the council for a term of one year, and one representative from each class to be selected by the separate classes, and one representative from the Law School to be selected from members that are attending law school. The runner-up for the position of student body president shall be a member of the council as a member-at-large. The editor of the Collegian and General Manager shall be council members but they shall have no vote. In case the newly elected Student Council has no returning student member, the Student Council shall elect following the student body election from the Freshman, Sophomore, or Junior class representatives of the foregoing year a holdover member who will serve for a year with the power of vote as a member-at-large.

Sec. 2. The council shall hold meetings as it deems necessary or upon call of the president. Six voting members besides the presiding officer shall constitute a quorum.

Sec. 3. The council shall enforce the Constitution, shall have charge of elections, shall be responsible for adherence to the traditions, shall make appointments for ASWU activities, committees and boards, and shall be responsible for

## CONSTITUTION

the general interests of the Association. The council shall be the chartering agency for all student activities with the exception of those under panhellenic or inter-fraternity control.

Sec. 4. Emergency powers may be granted to the council by a three-fourths vote of the Association. When such emergency powers are granted, the council may act on all matters without strict adherence to the constitution. Such powers shall be granted only for one year at a time and only when school or national emergencies make such action practicable.

### Article IX—Finance Board

Sec. 1. The membership of the Finance Board shall consist of the student body president, who shall act as chairman, the two vice presidents, the secretary, the publications manager, the general manager, and the finance manager of the Educational Activities Board.

Sec. 2. The Finance Board shall administer all funds of the association under supervision of the General Manager, provided, however, that the class funds shall be administered by such officers as the individual classes may determine.

Sec. 3. The budget of the Finance Board is subject to the approval of the Student Council.

## CONSTITUTION

Sec. 4. The Finance Board shall publish in the Collegian during the second semester the budget for the ensuing year and, within a month after registration day in the fall, shall publish in the Collegian the report of the finances of the preceding year.

Sec. 5. Unused funds for one school year shall be left to the credit of the activity fund for which they were allowed and such deficits as are approved by the Finance Board shall be deducted from the reserve fund; if not approved such deficits may be deducted from the corresponding funds of the following year.

### Article X—Publications Board

Sec. 1. Membership of the Publications Board shall consist of the student body president, the publications manager, the editors of the Collegian and the Wallulah, two members of the Association selected by the Student Council from other than its own membership, two faculty members selected by the Student Council for one year terms, and the general manager who shall vote only in case of a tie.

Sec. 2. The Board shall meet at it deems necessary or upon call of the chairman.

## CONSTITUTION

Sec. 3. The Publications Board shall maintain monthly reports of progress in organization, shall be responsible for training of personnel, shall appoint the editors of the Collegian and the Wallulah, the publications manager, and other editors of ASWU publications by review of applications rendered and shall set all salaries for members of the business and editorial staffs subject to the approval of the Finance Board and the Student Council.

### Article XI—Athletic Board

Sec. 1. Membership of the Athletic Board shall consist of the student body president as chairman pro tem, the president of Willamette University, the director of athletics, the general manager, the faculty athletic representative, two members of the board of trustees elected by that board, and two members of the Association appointed by the Student Council from other than their own membership.

Sec. 2. Regular meetings of the board shall be held during the first week of each month except when there be no matters to come before the board.



## CONSTITUTION

### Article XII—Social Activities Board

Sec. 1. Membership of the Social Activities Board shall consist of the first vice president acting as chairman, the sub-committee of the faculty-student affairs committee and students representing each of the separate organizations as determined by the Student Affairs Committee.

Sec. 2. The Board shall meet each semester to form the social calendar and at any other time when deemed necessary.

Sec. 3. The Board shall compose the social calendar for the school year and shall mediate when conflicts arise.

### Article XIII—Cavern Board

Sec. 1. Membership of the Cavern Board shall consist of the student body president, the first vice president, two members of the student body at large appointed by the Student Council from other than its own membership.

Sec. 2. The board shall meet as it deems necessary or upon call of its chairman as elected by the board.

Sec. 3. The board shall act as an advisory committee to the business manager of Willamette University.

## **CONSTITUTION**

### **Article XIV—Educational Activities Board**

Sec. 1. Membership of the Educational Activities Board shall consist of the student body president, the general manager, a drama manager, a forensic manager, a music manager, and a chairman selected from the student body at large by the Student Council.

Sec. 2. The Educational Activities Board shall meet as it deems necessary.

Sec. 3. The Board shall be responsible for the budgeting of their activity funds and shall determine the policy and the activity schedule of the educational activities: music, drama and forensics.

### **Article XV—Petitions**

Sec. 1. Any individual or group of individuals may petition the Student Council on any matter of student interest. The Student Council shall consider all petitions and recommend decisions to the proper administrative official, committee or board.

### **Article XVI—Repeal or Amendment of Legislation**

Sec. 1. Any act of any officer, committee or board existing under this constitution may be repealed or amended by a two-thirds vote of quorum at a meeting of the Association.

## CONSTITUTION

### Article XVII—Amendment to Constitution

Sec. 1. Amendment to this constitution shall be proposed by the Constitutional Revision Committee at a meeting of the Association, shall then be posted for one week, and must appear in the Collegian. At a subsequent meeting they may be passed by a two-thirds vote of quorum.

## BY-LAWS

### Article I—Awards Committee

Sec. 1. Membership of the Awards Committee shall consist of the president, the secretary, the faculty member of the Student Council, the general manager, the various faculty heads of the respective activities and the student managers of the student activities and the Finance Manager who shall act as chairman.

Sec. 2. The committee shall decide what awards will be given to members of the Association who have performed exceptionally meritorious work.

Sec. 3. Awards shall be presented only on award days designated by the Awards Committee.

Sec. 4. Funds for the awards shall be derived from the various activity allocations.

## CONSTITUTION

### Article II—May Week-End Committee

Sec. 1. Membership of the May Week-End Committee shall consist of a manager appointed by the Student Council and three assistants appointed by the president.

Sec. 2. The May Queen and her court shall be elected from the women of the Senior class by a regular election of the Association.

### Article III—Freshman Glee Committee

Sec. 1. Membership of the Freshman Glee Committee shall consist of a manager elected by the freshman class and three upper classmen appointed by the president.

Sec. 2. The committee shall lay down the rules of the Glee and shall appoint judges.

### Article IV—Homecoming Committee

Sec. 1. Membership of the Homecoming Committee shall consist of a manager appointed by the Student Council and three assistants appointed by the president.

Sec. 2. The committee shall promote the Homecoming sign contest and other traditions associated with Homecoming.

### Article V—Constitutional Revision Committee

Sec. 1. Membership of the Constitutional Revision Committee shall consist of the president,

## CONSTITUTION

the senior class representative on the Student Council who shall act as chairman, and three other members appointed by the president.

Sec. 2. The committee shall propose revisions to the constitution at any meeting of the Association.

Sec. 3. The committee shall pass on questions of interpretation of the Constitution, and shall handle such other disciplinary matters of problems that may be referred to it by the Student Council.

### Article VI—Procedure for Chartering ASWU Organizations

Sec. 1. All petitions for charters shall be forwarded to the Student Affairs Committee and then to the Student Council, and shall require approval of both groups before issuance of a charter.

Sec. 2. All groups chartered shall be able to show evidence that they are conforming to specifications of proposed constitution.

Sec. 3. All groups chartered shall bank all funds through the General Manager of the ASWU.

Sec. 4. The Student Council shall review all charters and constitutions at least once each school year.

The number of persons who were present at the meeting was about 200. The meeting was held in the evening and was very successful.

For a full report of the proceedings of the meeting, see the report of the committee on the subject.

The committee on the subject of the meeting have the honor to acknowledge the assistance of the friends of the cause who were present at the meeting.

Very respectfully,  
Your obedient servant,  
[Name]

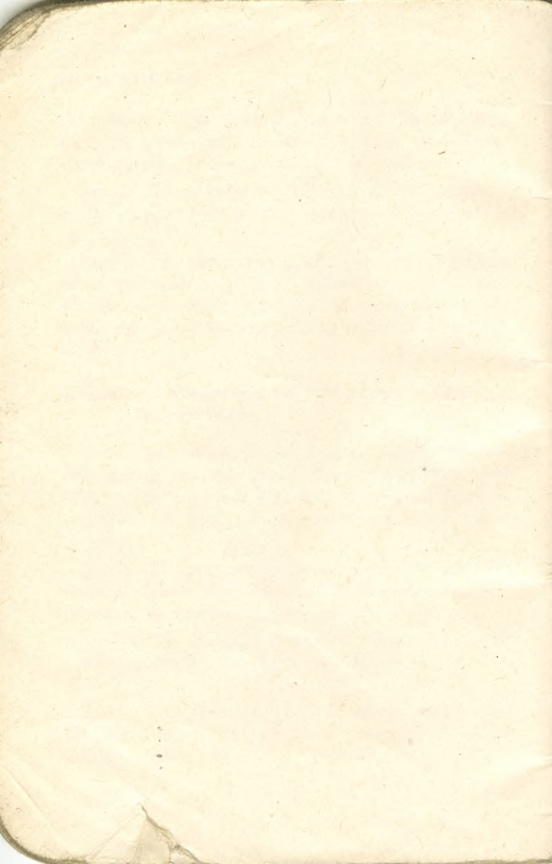
The committee on the subject of the meeting have the honor to acknowledge the assistance of the friends of the cause who were present at the meeting.

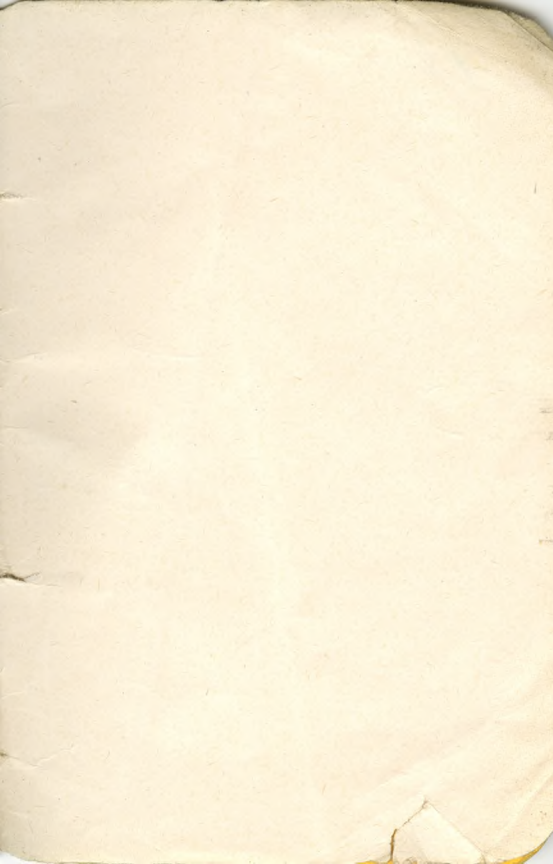
The committee on the subject of the meeting have the honor to acknowledge the assistance of the friends of the cause who were present at the meeting.

The committee on the subject of the meeting have the honor to acknowledge the assistance of the friends of the cause who were present at the meeting.

The committee on the subject of the meeting have the honor to acknowledge the assistance of the friends of the cause who were present at the meeting.







160

140 17.

103

162

163

122

950

9  $\overline{) 150}$  6

6  $\overline{) 1583}$  263

6  
6  
315

30

250  
18



W