

WILLAR

Vallulah



PUBLISHED BY

THE ASSOCIATED STUDENTS

OF WILLAMETTE UNIVERSITY

SALEM · OREGON

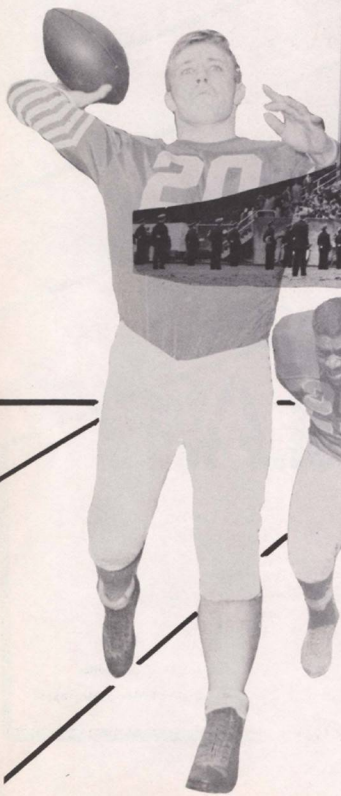
WALLULAH

Willamette University Library
Salem, Oregon

JANET STARK, editor

GLIFF GREGG, photographer

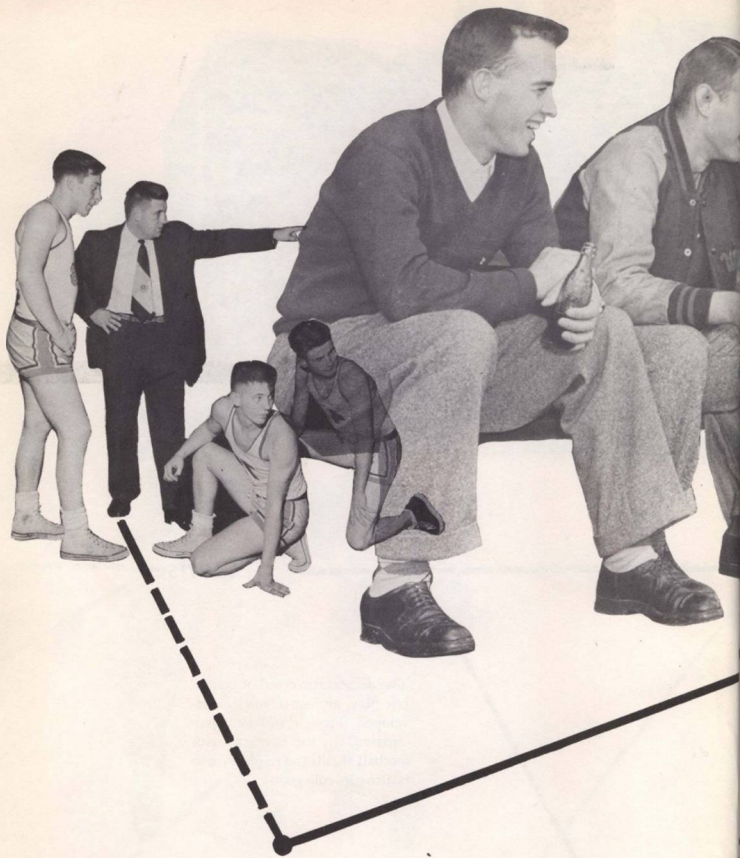
1951

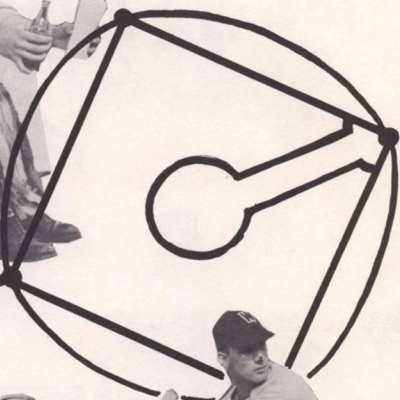




sports—

The democratic creed of action, fair play, and team work is developed through athletic participation. In the autumn, with football thrills and pageantry, one returns to college

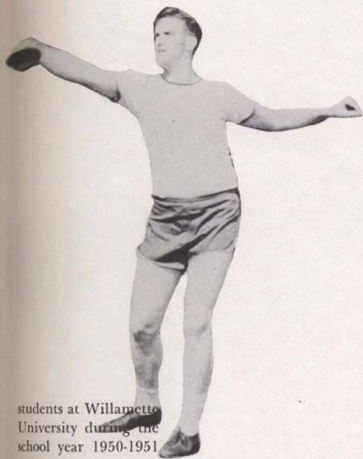




and finds again a new challenge and inspiration. Then, throughout the school year, the classroom schedules are enriched by enthusiasm and spirit generated during intramural and intercollegiate contests



and
so
we . . .



students at Willamette University during the school year 1950-1951 reflect a campus atmosphere of Christian education interwoven with wholesome physical activity.

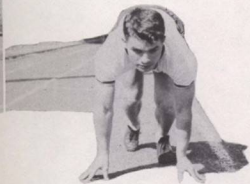
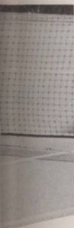


table of contents

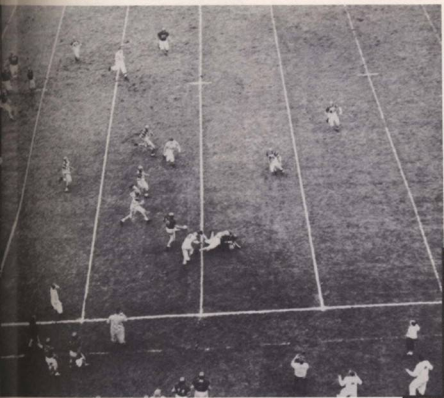
Introduction	1
Sports	9
Administration	31
Music	40
Law	44
Liberal Arts	48
A.S.W.U.	70
Clubs and Honoraries	97
Campus Activities	115
Living Organizations	168
Index	196

dedication

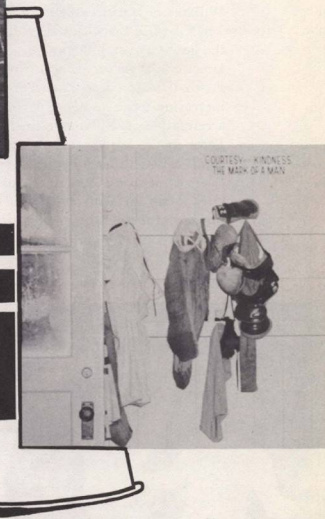
Willamette University, through its history, has been favored with many good and true friends.

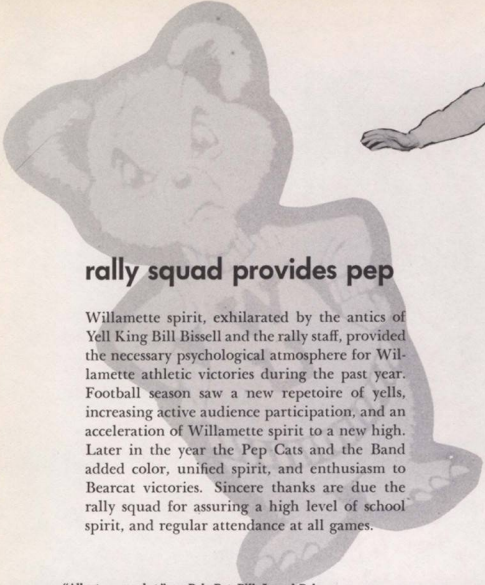
Today, due mainly to the interest and effort of the president of the Board of Trustees, the student body enjoys as fine an athletic plant as can be found on the Pacific Coast.

Thus it is with sincere gratefulness for the facilities of McCulloch Stadium, that the Associated Students of Willamette University dedicates this, our 1950-1951 year book, to Mr. Charles E. McCulloch.



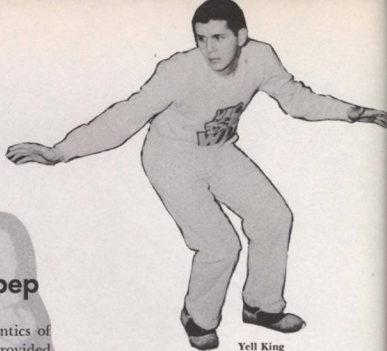
sports





rally squad provides pep

Willamette spirit, exhilarated by the antics of Yell King Bill Bissell and the rally staff, provided the necessary psychological atmosphere for Willamette athletic victories during the past year. Football season saw a new repertoire of yells, increasing active audience participation, and an acceleration of Willamette spirit to a new high. Later in the year the Pep Cats and the Band added color, unified spirit, and enthusiasm to Bearcat victories. Sincere thanks are due the rally squad for assuring a high level of school spirit, and regular attendance at all games.



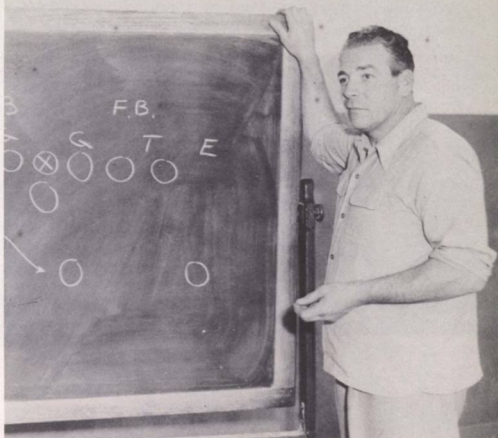
Yell King
BILL BISSELL

"All set . . . you bet," say Bob, Pat, Bill, Jo and Bob.



season's record

Willamette 21	C. W. C. E. . . . 7
Willamette 19	College of Idaho 7
Willamette 6	Whitworth . . . 0
Willamette 19	Chico State . . . 6
Willamette 21	U. of Hawaii . 21
Willamette 6	Lewis and Clark 20
Willamette 0	C. P. S. . . . 0
Willamette 6	Linfield . . . 7
Willamette 27	Whitman . . . 37
Willamette 7	Pacific . . . 26



Coach STACKHOUSE explains a new play.

Coach CHESTER STACKHOUSE Proves Capable Gridiron Strategist.



After winning four straight contests, injuries and the "Black Cat" jinx held sway over Willamette football fortunes this year resulting at the final gun in a 4-win, 2-tie, 4-lost record. Loosing such stalwarts as Captain Chuck Bowe, Art Beddoe, Keith Sperry, Charlie Nee, and finally Bob Hall to the Infirmary list dimmed early Bearcat hopes for the conference crown. The gridiron team highlighted its season by tying the strong U. of Hawaii Rainbows 21-21 in the Homecoming Game. Willamette is expected to be very formidable in forthcoming seasons with the return of promising underclass talent and the increasingly tricky "T" formations of Coach Stackhouse.



talented bearcats prove outstanding players

By effective team play and through the capability of the coaching staff, the Jason gridiron roster disclosed individuals of special athletic ability. Especial mention goes to senior Bill Ewaliko, chosen as All-Conference offensive halfback, and to teammates Al Minn and Bob Hall selected All-Conference defensive back and line-backer respectively.

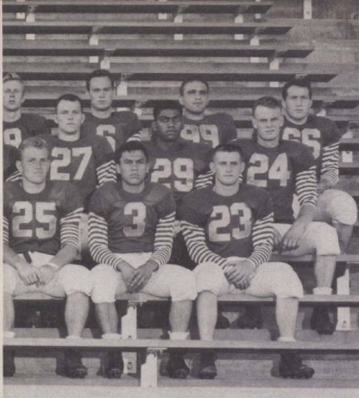
Freshman Rick Bingham proved a tricky T quarterback, while Keith Sperry, Paul Jewell, Bob Taylor, Don Humpheries and Al Minn proved to be the most aid for the tricky Ewaliko in the ground gaining department.

Until injured, Captain Chuck Bowe, and rough Art Beddoe were as good a guard combination as could be found in the conference. Rook Dorrance Noteboom was especially efficient in the tackle slot. Carrot thatched John Markowskie proved a sturdy center and was the "iron man" of the squad, participating in about every play of the 600 minute schedule.

Senior Charlie Nee, smallest lineman on the squad, was given All-Conference honorable mention which can be attributed to the little gamester's fire and determination. Freshman end Buzz Oerding was also listed as a league honorable mention.

While the Bearcat team possessed a powerful running attack, the airway yardage was usually confined to short spot passes, allowing the defense to concentrate near the line of scrimmage in anticipation of the tricky running patterns of Coach Stackhouse.

Ten graduating seniors have played their last football for the Cardinal and Gold, and it is to them we give thanks for perpetuating the tradition of "Fighting Bearcats."



team roster

Front row, left to right:

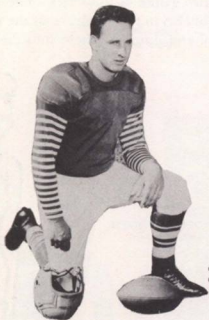
Dick Petzolt, guard, 170 lbs.
 Bruce Jarmon, quarterback, 145 lbs.
 Paul Jewell, fullback, 180 lbs.
 Rick Bingham, quarterback, 185 lbs.
 Dale Nutter, halfback, 185 lbs.
 Chuck Bowe, guard, 185 lbs.
 Al Minn, fullback, 172 lbs.
 Buzz Oerding, end, 190 lbs.
 John Burleigh, quarterback, 175 lbs.
 Jim Noa, halfback, 158 lbs.
 Don Humpheries, halfback, 160 lbs.

Second row, left to right:

Ralph Onzuka, halfback, 150 lbs.
 Gene Richeson, halfback, 170 lbs.
 Bob Shangle, halfback, 168 lbs.
 Bob Taylor, halfback, 160 lbs.
 Charlie Nee, guard, 167 lbs.
 Keith Sperry, halfback, 200 lbs.
 John Markowskie, center, 208 lbs.
 Mark Cotton, end, 170 lbs.
 Wally Richartz, guard, 175 lbs.
 Bill Van Horn, fullback, 180 lbs.
 Charles Koani, fullback, 205 lbs.
 Jack Eads, halfback, 194 lbs.

Third row, left to right:

Dorrance Noteboom, tackle, 210 lbs.
 Jim Hitchman, tackle, 185 lbs.
 John Skimas, end, 175 lbs.
 Don Wilson, guard, 190 lbs.
 Bill Ewaliko, halfback, 175 lbs.
 Art Cofer, fullback, 195 lbs.
 Joe Bonowitz, end, 184 lbs.
 Burnell Ambrose, center, 185 lbs.
 Larry Carrol, end, 180 lbs.
 Jim McHale, guard, 185 lbs.
 Don Hosford, tackle, 210 lbs.
 Art Beldoc, guard, 200 lbs.



Captain
CHUCK BOWE

Line coach, **SAM VOKES**

final northwest conference standings

Lewis and Clark	5	0	1,000	173	6
Linfield	3	2	.600	34	53
Pacific	3	2	.600	54	51
College of Idaho	2	3	.400	48	105
Willamette	1	4	.200	65	97
Whitman	1	4	.200	64	126



lewis coaches bearcats to third consecutive conference crown

Willamette 40	Whitman 47
Willamette 47	Whitman 48
Willamette 71	Whitman 59

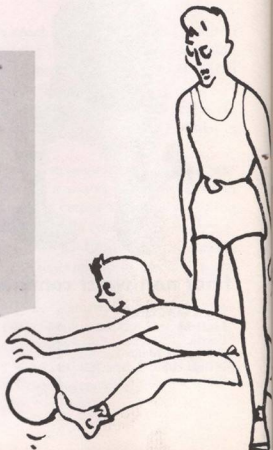
Paced by tall Bob Fain's 14 points, the Whitman Missionaries dropped Willamette 47 to 40 in the first conference game of the year for both teams. The Walla Walla team followed this victory the next evening with a 48 to 47 thriller over the wild-shooting Salem quintet. However the third game, played later on the Willamette court, was an entirely different story and personified the vast improvement of the basketball Bearcats during the season. Led by the 14 point efforts of Hugh Bellinger and Doug Logue, the Jason's roared over the Whitman team to the tune of 71 to 59, retaining the championship possibilities.

Willamette 66	College of Idaho 62
Willamette 59	College of Idaho 58
Willamette 65	College of Idaho 52

The Bearcat team made a clean sweep of the College of Idaho series. Rated as potentially the most dangerous team in the Conference by Coach Lewis, the Coyotes almost turned the trick in the second game of the series, losing only 59 to 58 in a thrilling fracas played on the Jason court. All-Conference Stan Neville was the big gun in the Idaho attack, canning 24 points to aid his teammates in the close decision. In the last meeting between the two schools, Willamette built up a huge half-time advantage and coasted to the 65 to 52 victory.

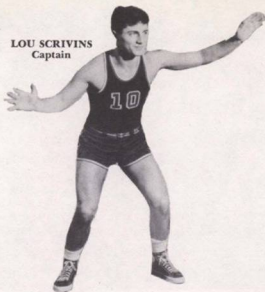
Willamette 46	Lewis and Clark 59
Willamette 62	Lewis and Clark 51
Willamette 66	Lewis and Clark 58

Willamette won two of three games from the Pioneers. Doug Logue with 15 points, and Ted Loder with 21 points helped the Bearcats cinch the last two games of the series. The Eldon Fix coached men from the Palatine Hills upset the dope bucket in the first game of the season between the two rivals, besting the Bearcats by 13 points, and dumping them into the early season cellar.





LARRY SMITH
All-Conference
Second Team



LOU SCRIVINS
Captain



CHUCK ROBINSON
Honorable Mention

northwest conference standings

Willamette	10	5	.667	891	802
Linfield	10	5	.667	891	785
College of Idaho	9	6	.600	830	763
Lewis and Clark	8	7	.533	772	783
Pacific	4	11	.267	655	764
Whitman	4	11	.267	700	808



HUGH BELLINGER
All-Conference



TED LODER
All-Conference

DOUG LOGUE
All-Conference





Left to right, standing: Chuck Robinson, Ted Loder, Alva Brown, Larry Smith, Claude Nordhill, Hugh Bellinger, Cliff Girod, Coach John Lewis, Ken Benshoof, Lou Scrivins, Dick Brower, Jack Hande, Dan Montag, Bob Smith, Doug Logue.
Left to right, kneeling: Managers, Frank Riebe and Ralph Bolliger.

Willamette	60	Pacific	40
Willamette	48	Pacific	49
Willamette	55	Pacific	37

Willamette was "red hot" for the first Pacific game, dumping the Badgers 60 to 40 on the home court. However in the second game Pacific height advantage stalled the Willamette fast break offense, and the local team lost by one point in a ding-dong battle. The following night saw the Bearcats return to true form and a second Bearcat victory was posted.

Willamette	69	Linfield	51
Willamette	72	Linfield	60
Willamette	65	Linfield	71

The Bearcat basketball team won two decisive victories over the Wildcats although allowing the McMinnville team a Conference co-championship in the last regular season game. The early season 69 to 51 Willamette victory was not of unusual interest as neither team was leading the loop at the time. However, great apprehension was aroused for the next meeting of the two teams some thirty days later, as a double victory by either team would now clearly decide the championship. A strong second half spurt allowed the Willamette team to be assured of a co-championship by winning the first game 72 to 60, especially aided by the 23 point efforts of All-Conference Ted Loder. However, the following night saw the Willamette team outfought under the boards, and thus the final Conference game ended with a Linfield win and the aforementioned co-championship.

This was the third consecutive Northwest Conference Championship won by the Willamette cagers, and, although the title was not completely clear, being shared with Linfield, it was a justifiable honor for Coach Lewis in his fourth year as head court mentor.



Chucker **FRANK GATCHEL** and catcher **LOU SCRIVINS** talk things over.

baseball team successful

The 1951 Willamette baseball team has proved to be a winning combination despite the loss of four first string men to professional clubs.

Opening the schedule with a 11 to 4 victory over the University of Oregon, the Bearcats coasted to four successive victories before tasting defeat at the hands of O.S.C.

Twin wins over Pacific University and Lewis and Clark College, and a split with Linfield College, placed the Willamette team in a definite position to repeat last year's first-place trophy.



It's "pepper" for **JACK HANDE**, **CLIFF GIROD**, and **DAVE PERLMAN**.



Above: Lefties **CLAUDE NORDHILL**, **BOB WHITE**, and **BERT LUND** warm up for mound duty.



Above: First baseman **ALVA BROWN** and Beaver **JOHN THOMAS** watch the plate as chucker **MIKE GLENN** puts one across.

Right: Baseball Coach **JOHN LEWIS**, and Track Coach **CHET STACKHOUSE** talk over championship possibilities early in the year.



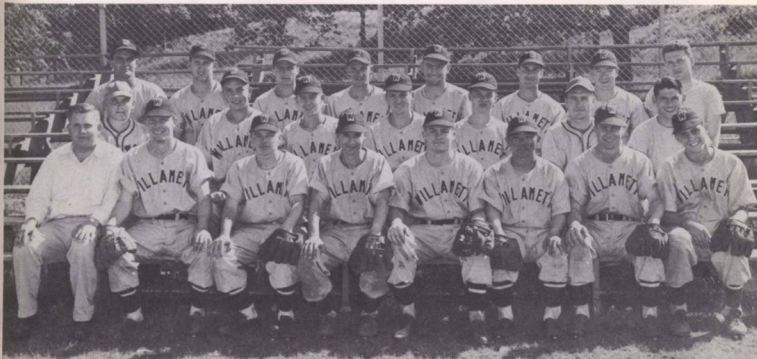


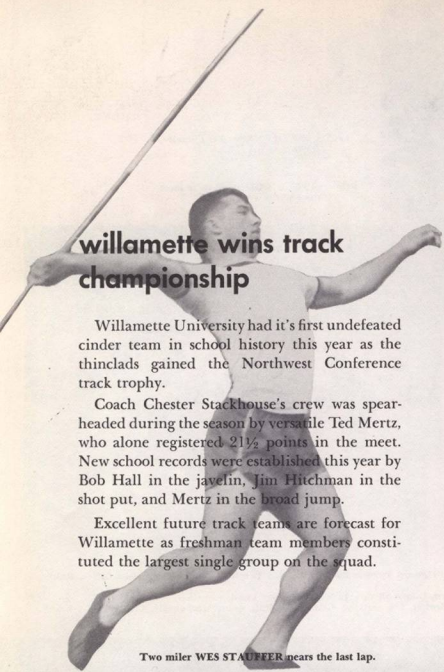
Left: MIKE GLENN readies himself for the pitch.

Below: CLIFF GIROD attempts to meet the ball for a bingle.



1951 BASEBALL TEAM. *Front row, left to right:* Howard Wilson, Bob White, Ken Benschow, Cliff Girod, Mike Glenn, Ralph Ontuka, Merlin Bates, Dave Perlman.
Second row, left to right: Dick Stuart, Alva Brown, Duane Shields, Jack Hande, Bert Lund, Jim Gray.
Back row, left to right: Coach John Lewis, Dick Brower, Lou Scrivins, Claude Nordhill, John Markowskie, Chuck Bowe, Frank Gatchel, Manager Gene Peyton.





willamette wins track championship

Willamette University had its first undefeated cinder team in school history this year as the thinclads gained the Northwest Conference track trophy.

Coach Chester Stackhouse's crew was spearheaded during the season by versatile Ted Mertz, who alone registered 21½ points in the meet. New school records were established this year by Bob Hall in the javelin, Jim Hitchman in the shot put, and Mertz in the broad jump.

Excellent future track teams are forecast for Willamette as freshman team members constituted the largest single group on the squad.

Two miler WES STAUFFER nears the last lap.

northwest conference meet

Willamette	70½
Whitman	55½
Lewis and Clark	41
Linfield	26
Pacific	21½
College of Idaho	9½



Above: TED MERTZ and GRANT SCHIEWE hurdle for the tape.

Pioneer's BUD WHITE edges MERTZ in the 220.





Above: 1951 NORTHWEST CONFERENCE TRACK CHAMPIONS.

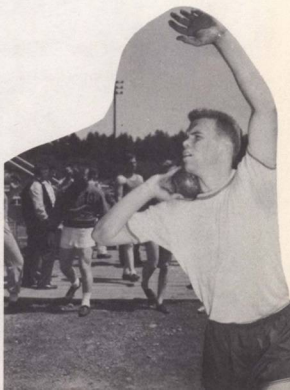
Front row, left to right: Bob Batchelder, Vern Shangle, Mark Cotton, Stan Neperud, Ben Collier, Wes Stauffer, Bob Hall, Larry Standifer, Bob Goff, Bill Van Horn, Jimmy Noa, Ralph Stephenson, Manager Bob Hilmer.

Back row, left to right: Coach Stackhouse, Jerry Grimm, Larry Smith, Bob Miller, Layton Gilson, Jim Hitchman, Ted Mertz, Rollie Cocking, George Porter, Wally Boe, Bob Wood, Mike Travener, Bill Ewaliko.



TED MERTZ tries a high jump in between hurdle and sprint races.

Putter JIM HITCHMAN broke school record with a heave of 45' 7½".





1951 TENNIS TEAM. Back row, left to right: Jim Morgali, Don Drake, Al Miles, Cece Connors, Phil Hammond. Front row, left to right: Bob Petzolt, Bob Bell, John Ambler.



BOB PETZOT and AL MILES return two.

tennis team

Despite early dual losses to the University of Oregon and Oregon State, the Willamette raquet-men have maintained their winning ways this Spring. Twin wins over Oregon College of Education and Pacific University were paced by No. 1 man Cece Connors, and undefeated No. 5 man, John Ambler.

On May seventh Linfield was defeated five to two and the following weekend the Bearcats slammed through Lewis and Clark college by the same score. Coached by genial Les Sparks, the tennis team has consistently played a good brand of ball.



LES SPARKS, coach.



Top man,
CECE CONNORS

golf team

Paced by medalist Bill Wittenberg, the Golf Team putted early season victories over the University of Portland and Lewis and Clark college. Later stiff Northwest Conference competition was provided by the Linfield divoters. In the conference meet at Top O'Scott country club, the Bearcat golfers are rated as definite contenders for the championship cup.



BILL WITTENBERG putts one as **VON ESCHEN** looks on.



GOLF TEAM. *Back row, left to right:* Paul Southworth, Harris Eckley, Kent Myers, Coach Sam Vokes.
Front row, left to right: Vern Zeuske, Chuck Massey, Joe Dwieght, Bill Wittenberg, Bob Schaefer, Ellis Von Eschen, Don Buell.

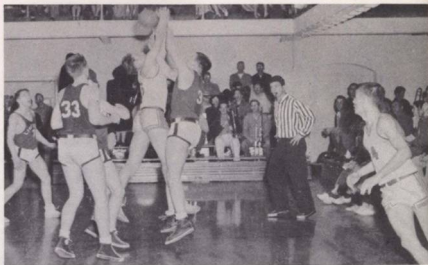




*Front row, left to right: Coach Sam Vokes, Layton Gilson, Rick Bingham, Jerry Aldrich, Kent Meyers, Bill Moyer.
 Second row, left to right: Harris Eckley, Duane Shields, Gene Timms, Jerry Sieforth, Humberto Lopez, Dorrance Noteboom, Ted Jacobs.
 Back row, left to right: Manager Bill Ewaliko, Dave Forester, James Johns, Kermit Hammer, Ray Williams, Don Empey, Verne Zeuske,
 Manager Howard Wilson.*


freshman basketball

The inexperienced Bearkittens had fair success the past season, winning 9 of 17 scheduled games. The Vokes coached cagers were led by guard Duane Shields who netted 227 points during the year. Tall Layton Gilson was the backboard mainstay, and his 191 markers made him second highest team scorer. Despite the frankly mediocre season, the experience gained by individuals will aid the varsity team next year.



women's athletics


Willamette coeds have themselves enjoyed entering into the physical education program. Sports of interest to every woman are now given by the athletic department. Activities now included are swimming, badminton, tennis, archery, softball, and modern and folk dancing. Even intercollegiate competition in basketball was offered by contests with Oregon College of Education coeds. Of especial interest this year were the fun-provoking square dance classes. Thus as Willamette Women enter into sports, they enjoy a more varied education, and maintain good health for the trying college schedule.



Tennis player **JOAN LANKE** displays service form.



GAIL CURREY, Director of Women's Athletics.



Above: **LEAH CASE** draws a bull's eye as **RUTH PRICE** and two other Robin Hoods string their arrows.

Right: Seven coeds enjoy a little outside sunshine on the archery range.



willamette expands intramural program

This year an entirely new program was established to encourage all-around student participation in intramural athletics.

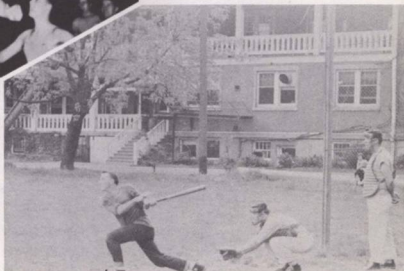
A council consisting of one person from each participating group was the policy forming body for campus sports. Mr. Sparks, head of the Physical Education department, retained his position as administrator of the entire program and advisor to the Intramural Council.

Winners for each sport are decided on a point system. At the end of the year a plaque will be given to the team having the most total points. The award, to be retained by the winning organization, is an exact replica of a large plaque that will remain in the Physical Education trophy case.

Umpiring is conducted by the P. E. leadership and organization class. Frank Reynolds and Al Minn checked on administrative details for both the team sports of baseball, football, basketball and softball, and the individual sports of tennis and badminton.



Above: Fast basketball action always arouses the most avid interest in the 'mural program.



Right: SIG TOM JOSEPH cuts at a low one and connects for a solid single as a Lausanne coed observes the game.



"All Americans," league leaders in "A" football, basketball volleyball.

Listed below are the total results of the intramural program at the half way mark.

	Football	Basketball	Volleyball
All Americans	25½	33	48
Baxter Hall	15	27	33
Beta Theta Pi	42	21	24
Bishop Hall	15	3	6
Law	00	18	15
Sigma Chi	31½	30	21
Phi Delta Theta	6	33	24

Beta ROD BEALS grabs a touchdown pass.



DR. FENIX hoists a homer.



intramural



GLEN DUUS, catcher for the Phi Delt "B" team, reaches for a foul tip off Sig bat.



Beta Theta Pi, intramural "B" football champions, relax for their victory photograph.



Phi BOB HILMER bunts a short one down the first base line. STAN STEINDORF, Sig catcher, was awaiting ball.

action

SCHNEEBLES and the runner are safe at first in a little fast softball action.



S. A. E.'s and Betas mix up a football pass as the going begins to get a little rougher on the turf.



Sig DAN MONTAG pushes a high one across the platter as his team mates await the blow.



s.a.e.'s and all americans have strong spring sports teams

Behind the effective pitching of big Bob De Bord, the S. A. E. softball nine remained the "team to beat" in late softball action. Well coached by Tom Yates, the Purple and Gold have been averaging about 10 runs a game to swamp opponents.

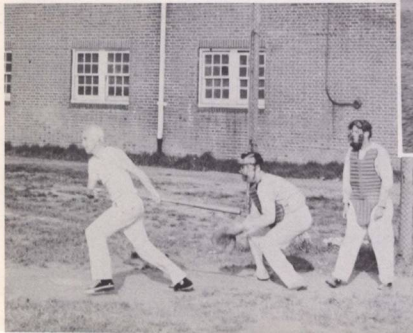
In badminton, the All Americans have resumed their winning ways and remain undefeated in individual action, thus assuring a top position in trophy competition.

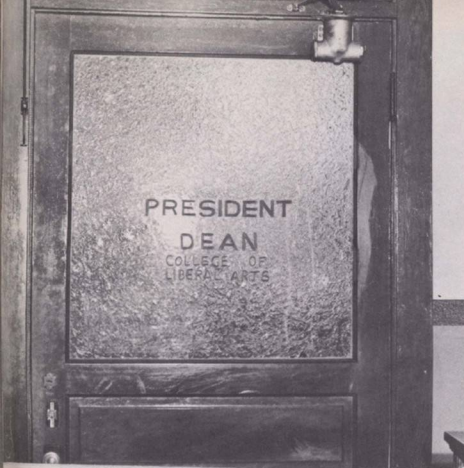


It's CASEY at bat as the catcher ducks in fear.

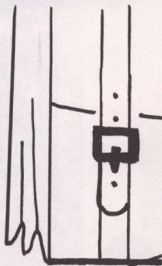
This forward pass clicks as the Baxter boys mix it up.

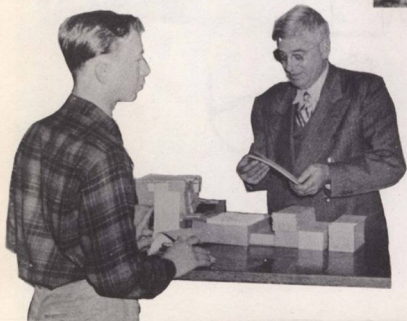
Faculty team member Luther swats a line drive as the "old men" show some batting skill.



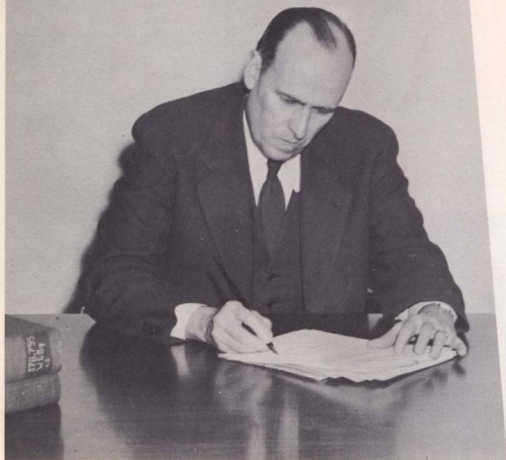


administration









G. HERBERT SMITH, President

Assuming a large part of the administrative responsibility for the University, President G. Herbert Smith leads the staff, the faculty, and the students toward high goals of social and scholastic endeavor. Giving to the University the advantage of his prestige and leadership for the ninth year he has contributed much to Willamette's achievements and advancements in its one hundred and eighth year.

REGINA EWALT
Dean of Women

In her position as Dean of Women, Mrs. Ewalt serves as advisor and friend to the women of the University.



MARK O. HATFIELD
Dean of Students

In his first year as Dean of Students, Dean Hatfield has shown a fine understanding of the needs and problems of the students of the University.





ROBERT W. FENIX
Business Manager

As Business Manager, Mr. Fenix has the great responsibility of handling the financial affairs of the University. A particularly trying time for the Business Manager and his staff is the registration period.

DANIEL H. SCHULZE
ASWU General Manager

Dr. Schulze acts as financial advisor for the Associated Students. His chief problem is to see that the various student body organizations do not exceed their budgets.



H. B. JORY
Registrar

As Registrar, Mr. Jory serves to unravel registration and curriculum problems for students. The problem of registering and maintaining correct records of approximately 1,000 students with a minimum of confusion is handled with admirable efficiency by our jovial Registrar.





CHARLES A. PAETH
Director of Admissions

Mr. Paeth spends most of his time meeting and writing to prospective students. His job takes him on trips through Oregon, Washington, and California to interview graduating high school seniors who are interested in attending Willamette.

RALPH E. PURVINE
University Physician

The University Physician has the responsibility of protecting the health of the students of the University. Dr. Purvine's main sphere of activity is at the University Infirmary administering to the ailments of students who have tried to do too much with too little rest.



HENRIETTA ALTHOFF
University Nurse

The University Nurse acts as assistant to Dr. Purvine in the University Infirmary. Besides taking care of students confined to the Infirmary, she also tries, with the aid of timely pills, to prevent the necessity of a prolonged visit to the Infirmary.



Above:
MISS LORENA N. JACK
Director of Dormitories

In charge of the planning and serving of all meals in the residence halls, Miss Jack still manages a friendly smile.

Above right:
MORTON E. PECK
Curator of Herbarium

Approximately 28,000 plants, mostly native to Oregon, are in the Herbarium under the care of Dr. Peck.



Middle right:
EARL RITTENHOUSE
Chief Accountant

In addition to taking charge of the school administration finance records, the chief accountant and his staff keep accounts of the finances of sport programs.

Bottom right:
EDWIN H. ARMSTRONG
Director of Development

In his first year at Willamette, Mr. Armstrong has done a great service in handling gifts to the University.



NANCY STUART
Director of Information

The busy office of information is under the direction of Nancy Stuart. Most of her activities are channeled into the distribution of publicity for the University. A major project throughout the year is the publication of the Willamette Alumnus which is issued four times yearly.



AINSLEY A. WHITMAN
Librarian

On constant duty in the library to serve the students and the faculty is Mr. Whitman. In his first year at Willamette, he has inaugurated several changes that have been of value to the students.



RICHARD C. WILLIAMS
Assistant Librarian

Mr. Williams has the trying task of the recataloging and rebinding of approximately 40,000 volumes in the University Library. Constant addition of new volumes and the necessity of call number revisions keeps him always busy.

music



ALICE L. ADAMS
Salem, Oregon



MARTHA E. BENARD
Portland, Oregon



BERWIN F. MURRAY
Monmouth, Oregon



TERRY L. MURRAY
Salem, Oregon



CHARLES MARTIN
Klamath Falls, Oregon

LOIS ANN GOTTWALD
Molalla, Oregon



**GORDON MALLORY and ART DIMOND, Senior Scholars
in Music observe directing procedure.**



JOHN E. KAEMMER
Sumner, Washington



GORDON E. MALLORY
Klamath Falls, Oregon



DR. WILLIS C. GATES
Associate Professor



MAURICE W. BRENNAN
Assistant Professor





Ellen Fredrickson
Salem, Oregon



Margret Powell
Beaverton, Oregon



Robert E. Robins
Salem, Oregon



Norvada Smedley
Salem, Oregon

the willamette university college of music

has maintained a laudable record of achievements and advancements in all phases of choral and instrumental music. The aim of the College to provide a liberal education and develop talent to the highest capacity has produced expert training for future music teachers who find themselves in demand throughout Oregon. The College is a member of the National Association of Schools of Music.

STANLEY BUTLER
Assistant Professor

ALICE ROSE JONES
Instructor



JEAN FARQUHARSON
Instructor

CLORINDA TOPPING
Associate Professor





Top:
JOSEF SCHNELKER, Associate Professor

Bottom:
RALPH DOBBS, Associate Professor



Senior Scholars, LOIS GOTTWALD, JOHN KAEMMER, and BOB ROBINS try out a new arrangement.

Music students have a wide choice of major fields from which to choose. Most of them choose to major in piano, public school music, voice, or instrumental music. Student and faculty recitals have proved a source of widespread interest and entertainment to the entire student body. Valuable experience is received by participation in such functions as the university band, the A Cappella Choir, and the orchestra.



law



the college of law of willamette university

marks its sixty-eighth anniversary of educating men for the legal profession this year. Ranking high among law colleges in the West, the College of Law has attained recognition for the high standards it has developed through the many years of its existence. To train and equip men and women to render service and achieve success in the practice of law is the aim of the College.



ELMER G. BALDWIN
Salem, Oregon



WALTER W. FOSTER
Salem, Oregon

ROY M. LOCKENOUR
Professor



ROBERT H. ANDERSON
Salem, Oregon



HOMER L. ALLEN
Salem, Oregon

ROBERT W. GIBSON
Reno, Nevada



OTIS W. GOAKEY
Salem, Oregon



OMAR W. HALVORSON
Caldwell, Idaho





WAYNE HILLIARD
Salem, Oregon



DOUGLAS E. KAUFMAN
Salem, Oregon



EDWIN W. BUTLER
Assistant Professor



WILLIAM WINSLOW
Law Librarian



FRANCIS J. LARKIN
Salem, Oregon



JOHN B. MATHENY
Salem, Oregon



HARRY H. OHLMANN, Jr.
Salem, Oregon



DALE W. PIERSON
Salem, Oregon



Law School students gather on the steps of the College of Law for a brief respite from rigorous studies.

WILLIAM S. PILLING
Salem, Oregon



ERVIN W. POTTER
Salem, Oregon



JULIUS R. SLOCUM
Salem, Oregon



ROBERT E. SMITH
Salem, Oregon

ROBERT M. STULTS
Salem, Oregon



HENRY A. ULVIN
Salem, Oregon



GEORGE D. WILSON
Salem, Oregon



JOHN C. PAULUS
Assistant Professor



EDWIN A. YORK
Salem, Oregon

CHARLES BURT
Salem, Oregon

liberal arts



the art department



BARBARA GARRETT
Compton, California



DIANE PROCTOR
Portland, Oregon



ELLEN MARIE REYNOLDS
Salem, Oregon



ALLEN WILCOX
Albuquerque, New Mexico

is outstanding among smaller schools in its attempt to create an understanding of the development of classical and modern art and appreciation of their forms. Student art exhibits during the year have proved points of interest to everyone. Non-majors who wish to gain an appreciation of art and receive instruction in methods find many courses in the department of great value.

DIANE PROCTOR, Senior Scholar in Art
puts the finishing touches on her sketch.



CARL HALL
Artist in Residence

DR. CAMERON PAULIN, Professor



the departments of english and journalism

help develop skill in the use of words through studies in speech and composition. Students of English acquire a knowledge and understanding of the main literary trends of England and America. The importance of a stable foundation in English is so great that basic English courses are required of all students. Indispensable publications such as the Collegian, the Wallulah, the Student Handbook, and the Fusser's Guide are the products of Willamette's aspiring journalists.



ANN AVRIETTE
Los Angeles, California



JOHN RALPH BROWN, Jr.
Bend, Oregon



GRANT CHIPPS
Salem, Oregon



JEAN GILMER
Salem, Oregon



Senior Scholars in English, **MARY LUMIJARVI**, **ANN AVRIETTE**, **JEAN GILMER**, and **MARYANN HALL** ponder over a literary problem.



DR. HELEN PEARCE
Head of the English Department



DR. HENRY KOHLER
Professor



MARYANN HALL
Cottage Grove, Oregon



LuDENE HARGRAVE
Portland, Oregon



MARY LUMIJARVI
Astoria, Oregon



DALE REYNOLDS
Merlin, Oregon



JANET STARK
Portland, Oregon



WILLIAM J. WELCH
Salem, Oregon



MURCO RINGNALDA
Head of Journalism Department

GEORGE EDWARDS, Instructor



MRS. LUCILE BARTEL
Instructor



ELLA LOU BALL
Trout Lake, Wash.



MARGARET GUICE
Seattle, Wash.



WILLIAM MOORE
Seattle, Wash.



NICKIE HAYNES
Berkeley, Calif.



MARIAN SPARKS
Salem, Oregon



MARIAN SPARKS
Senior Scholar
in Drama.

Above right:
RUANE B. HILL,
Instructor



HOWARD H. RUNKEL
Associate Professor

the speech and drama department

places its main emphasis on the development of the students in the fundamental skills of self-expression. Majors in the field study extensively the background and historical development of the theatre.

the education department

continues to serve an important vocational purpose in the training of many Willamette graduates for the profession of teaching.

Senior Scholars in Education,
BURNELL AMBROSE, DORIS KIMBLE,
and **PATTY JO HAMMOND** look over
an educational patterns chart.



GEORGE B. MARTIN
Head of Education
Department



KENNETH V. LOTTICK
Associate Professor





PAT ZAHARE
Senior Scholar in Languages

the modern languages department

has designed its curriculum to further the student's interest and understanding of the French, German, or Spanish speaking people. After mastering basic grammatical elements of a foreign language, the student studies the history and literature of that particular country in order to acquire an intelligent and sympathetic attitude toward its past and present conditions.

DR. GEORGE D. HOCKING
Head of Language Department



BARBARA LEE MILLER
Burns, Oregon



DAVID JOE QUINN
Salem, Oregon

DR. MARION MORANGE
Associate Professor,
French



PATRICIA JANE ZAHARE
Salem, Oregon

DR. PAUL B. BEAL
Associate Professor,
Spanish



DR. DANIEL SCHULZE
Professor, German

MARGUERITE E. BERG
Instructor, Spanish

OLIVE M. DAHL
Associate Professor
German





DR. ROBERT M. HALEY
Head of Economics Department

economics and business administration

LESLIE L. ALDRICH
Prineville, Oregon

BURNELL AMBROSE
Portland, Oregon

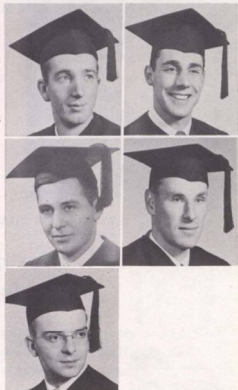
J. DAVID BECKETT
Salem, Oregon

FRANCIS J. BOMBER
Jefferson, Oregon

DONALD BRAND
Roseburg, Oregon

JAMES I. ELLIOT
Assistant Professor

WILLARD S. SMITH
Assistant Professor



DICK ENDSLEY, Senior Scholar in Business Administration, and **DOUG STEARNS** and **DON BRAND**, Senior Scholars in Economics, discuss the economic problems of the day.





RENE CHARASSE
Marseille, France

ROBERT CLARK
Salem, Oregon

ROBERT DAVIS
So. Bend, Wash.

BOB DeBORD
Salem, Oregon

RICHARD ENDSLEY
Hood River, Oregon

BILL EWALIKO
Honolulu, T.H.

MORRIS HUNSACKER
Salem, Oregon

EARL KILLEFER
Newport Beach, Calif.

HOWARD MADER
Salem, Oregon

DENE MALLORY
Salem, Oregon

TED MERTZ
Upland, California

JACK R. MITCHELL
Portland, Oregon

the economics and business administration department

satisfies the needs of the many Willamette students who desire futures in this field. Courses are offered which contribute to an understanding of current economic problems, the operation of our economic systems and fundamental practices of the business world. The student obtains a knowledge of both economic theory and the practical application of business methods. Many students from other departments take fundamental courses in economics which enable them to better understand the workings of our financial system.

JIM MORRISON
Blaine, Washington

WILLIAM PEYTON
Balboa Island, Calif.

GENE PEYTON
Klamath Falls, Ore.

DON PHILLIPS
Salem, Oregon

KARL D. SCHMIDT
Hood River, Oregon

ROBERT SKIRVIN
Harrisburg, Oregon

WALTER STAUFFACHER
Redmond, Oregon

DOUGLAS STEARNS
Portland, Oregon

RICHARD STRATTON
Astoria, Oregon

RADO SUTICH
Salem, Oregon

ROBERT TAYLOR
Coquille, Oregon

JAMES D. WILSON
Monmouth, Oregon





DR. IVAN R. LOVELL
Head of History Department

DR. ROBERT D. GREGG
Professor



CHESTER C. KAISER
Assistant Professor



NANCY ADAMS
Silverton, Oregon



CAROLYN BIEDERMAN
Jefferson, Wisconsin



JACKIE CHUTE
Portland, Oregon



SUSAN COGGESHALL
San Marino, Calif.



SARAH HUNTLEY
Salem, Oregon



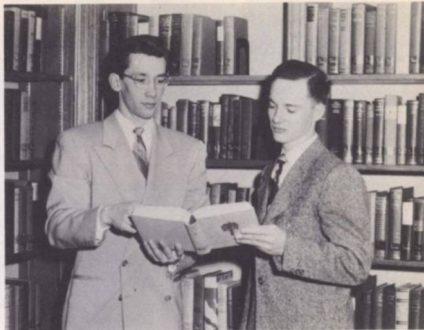
ALBERT LUND
Portland, Oregon



GENE MARCHINGTON
Portland, Oregon



SCOTT THOMSON
Vida, Oregon



SCOTT THOMSON and BERT LUND, Senior Scholars
in History, study historical trends.

the history department

offers a study of the basic developments in the history of mankind. The culture of any people is dynamic and ever-changing, so an adequate understanding of the present status of a country cannot be achieved without a knowledge of the forces which comprise its past history. Students in the History Department, by studying individual periods in the development of national cultures, receive an insight into the broader trends which have prevailed throughout the ages. Such an insight into the causes of the present social and political organization of mankind leads to the ability to evaluate clearly and fairly existing conditions. This ability to distinguish true values in historical developments is a prerequisite of good citizenship—both world and national.

GEORGE WAGNER
Salem, Oregon

LEVI WIENS
Salem, Oregon

ROBERT WIPER
Salem, Oregon

WESLEY SUE WOODARD
Boise, Idaho



the political science department

stresses the fact that intelligent citizenship requires an understanding of the political organization of one's country. The aims of the department include the formation of such an understanding by a study of the historical development of our present system, as well as by comparing and contrasting our government with those of other countries. Current events are stressed in the department, and students receive an opportunity to know contemporary developments in all countries of the world as well as in their own.



PAUL RUSSELL and JACK GUNN
Senior Scholars in Political Science.



DONALD L. CARPENTER
Portland, Oregon

ASTRID OIE TAREM
Tallinn, Estonia

JACK GUNN
Palo Alto, California

ESTHER G. WEINSTEIN
Portland, Oregon

PAUL RUSSELL
Salem, Oregon

NORTON YOUNGLOVE
Riverside, California

PHILIP STOEHR
Shelton, Washington



ROBERT M. GATKE
Professor

MARK O. HATFIELD
Assistant Professor

A. FREEMAN HOLMER
Assistant Professor





JOAN K. CARLSON
Portland, Oregon

JANET GILLILAND
Burlingame, California

FLORENCE GOODRIDGE
Camas, Washington



FLORENCE GOODRIDGE
and **JOAN HOLBECK**,
Senior Scholars
in Sociology.



Above left:
DR. JOHN RADEMAKER
Head of Department

ALFRED W. SHEETS
Assistant Professor

the sociology department

studies the causes and effects of social problems in an attempt to develop applicable solutions. Modern life with its complex political, social, spiritual, and technological aspects offers a variety of problems for the student of sociology.



W. E. MOORE
Lecturer

JOAN HOLBECK
Portland, Oregon

EDNA JERNSTEDT
McMinnville, Oregon

ELEANORA LOVELESS
Eugene, Oregon

CONRAD T. MINER
Kansas City, Mo.



psychology department

stresses the importance of an understanding of the individual personality in all professions which deal with human nature. Students of psychology develop an insight into the workings of the mind which enables them not only to meet personal problems, but also to be in a position to counsel others. The department offers a comprehensive survey of the various fields of psychology for those students who plan to do graduate work, while those who enter other fields find the methods and applications of psychology to be a firm foundation for their chosen work.



CHARLES H. DERTHICK
Assistant Professor



JOHN A. MYERS
Associate Professor

SHIRLEY AMBLER
Portland, Ore.

JEANNE du BUY
Salem, Oregon



DUANE ERTSGAARD
Salem, Oregon



PATTY JO HAMMOND
Portland, Ore.



JIM LACEY
Monterey, Calif.



MARILYN MEYERS
Salem, Ore.





JEFF R. McDOUGALL
Burlingame, California



HELEN OAKES
Portland, Oregon



ELWOOD E. OBERT
Salem, Oregon



DUANE ERTSGAARD and DON ReVILLE
Senior Scholars in Psychology.



NANCY JANE PHILIPS
Albany, Oregon



EDITH REEHER
Forest Grove, Oregon



DON ReVILLE
Grants Pass, Oregon



PATRICIA JEANNE ZOSEL
Salem, Oregon



DR. A. GALE CURRY
Associate Professor



JOHN LEWIS
Coach



CHUCK BOWE
Parkdale, Oregon



GILBERT C. CONNER
Pendleton, Oregon



LESTLE J. SPARKS
Director of
Physical Education



LEE S. VOKES
Line Coach



Coach **JOHN LEWIS**



MARJORIE LUNDAHL
Salem, Oregon



CHARLES C. MASSEY
Parkdale, Oregon



ALBERT DOUGLAS MILES
Salem, Oregon



ALBERT MINN
Honolulu, Hawaii



JAMES K. NOA
Honolulu, Hawaii



FRANK REYNOLDS
Salem, Oregon



WES STAUFFER
West Linn, Oregon



ROBERT WARREN
Salem, Oregon



ROBERT L. WHITE
Portland, Oregon



MARY MARGARET WILL
Salem, Oregon



MARY MARGARET WILL and CHUCK BOWE
Senior Scholars in Physical Education.

the physical education department

fulfills an important phase of the liberal education. Besides helping the student keep in physical condition and develop a sportsmanlike attitude, the finer points of sports in general are learned. In addition to the regular classes offered, the Physical Education Department sponsors an extensive intramural sports program which includes touchball, basketball, volleyball, tennis, badminton, softball, and track.



DR. EDWARD C. KOLLMAN
Head of Philosophy Department

DAVID POINDEXTER and MARIAN SAYRE
Senior Scholars in Religion.



STANLEY ASCHENBRENNER
Spokane, Washington



EARL FEDJE
Salem, Oregon



NORMAN LAMBERT
Salem, Oregon



DAVID POINDEXTER
Astoria, Oregon

the departments of philosophy and religion

guide students in finding meaning and value in all of man's activities. Courses in philosophy stimulate man's reasonable attempt to learn of the nature and content of life. Religion has been from the beginning the bearer of human culture. Christianity and other world religions are studied here to afford the student a knowledge of the religious ideals of mankind as well as to offer him a basis for his own faith and understanding of others.



ARTHUR H. MAYNARD
Acting Assistant Professor, Religion.



REV. BROOKS H. MOORE
Acting Assistant Professor, Religion.



JEAN KELL
Burlingame, California



PATRICIA ADELE LONG
Salem, Oregon



LOIS LATIMER
Head of Home Economics Department

the home economics department

has planned a wide variety of classes to prepare non-majors as well as majors in home economics for successful home planning and family living. Demonstrations and visiting lecturers give the student a practical application of what she is learning, and laboratory work gives the student a chance to apply the knowledge acquired in classes.



JEAN KELL, Senior Scholar in Home Economics

the physical science department

plans to provide the students with an understanding of the physical features of the world in which he lives. The prominent position of science today insures the continued value of such a study and makes the knowledge and skills which are acquired of practical value. Such knowledge is both necessary and easily transferable to other fields of study.



HERMAN CLARK
Professor



BILL ROSS and **DICK BOLTON**, Senior Scholars in Biology, test a new specimen.

CECIL R. MONK
Professor

MARTHA SPRINGER, Associate Professor

CAROLYN T. SAXTON, Instructor



the biology department

teaches students the structure and physiology of living organisms, with the emphasis on the fundamental principles of life in relation to man. The simplest forms of life are studied to demonstrate the complicated processes of the higher forms of life. These subjects provide the student with a better understanding of himself, and a background for a profession in the scientific field.

DIANA ADAMS
Salem, Oregon



RICHARD NEILSON BOLTON
Salem, Oregon



OLWYN DAVIES
Salem, Oregon



KENNETH HORN
Woodburn, Oregon

WESLEY ISHIKAWA
Honolulu, Hawaii



ELLIOTT NOSAKA
Eleele, Kauai, T.H.

ROBERT D. ODLE
Salem, Oregon



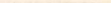
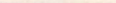
GILBERT V. OLIVER
Portland, Oregon

WILLIAM M. ROSS
Portland, Oregon



DORLAND E. SWAN
The Dalles, Oregon

MARY JO WIGGINTON
Evanston, Illinois



PHIL PHIPPS
Senior Scholar in Math.

the physics and mathematics departments

study problems and theories regarding the physical laws of the universe by means of lectures and laboratory work. The accent on science in modern life makes the study of physics and mathematics particularly useful and stimulating.



Below:

DR. EARL T. BROWN, Professor

DR. CHESTER F. LUTHER, Professor

DR. ROBERT PURBRICK, Assistant Professor

ROBERT REID, Instructor



JAMES F. CARPENTER
Baker, Oregon



LAWRENCE CHERRY
Salem, Oregon



GEORGE CHOBAN
Portland, Oregon



ROBERT CHRISTENSEN
Salem, Oregon



ALAN GOUDY
Portland, Oregon



FRED W. GRUVER
Salem, Oregon



JANE M. TURNER
Raymond, Washington



GEORGE A. ODGERS, Jr.
Powell, Wyoming



PHILIP PHIPPS
Salem, Oregon



HELEN TAKAYAMA
Lahaina, Maui, Hawaii



DEL TRINKLEIN
Salem, Oregon



the chemistry department

provides a knowledge of the fundamental methods and practices of chemistry. Increasing interest throughout this country and the entire world in medical and scientific research has made such skills invaluable to students of today. Dentists, physicians, and research chemists of the future, as well as prospective teachers of chemistry find a wealth of information, inspiration and technical skills in the laboratories of Collins Hall. Intensive drill in formulae and practices of the laboratory, and the opportunity to discuss new ideas in the world of science and their applicability to world problems serve to direct the student toward his chosen field of endeavor. The Chemistry Department is adapted to meet the needs of students who have widely differing future plans. Students in other departments who require only a basic knowledge of the principles of chemistry, find proper courses provided to satisfy their needs.



HERB CARLSON
Portland, Oregon



LOY CRAMER
Salem, Oregon

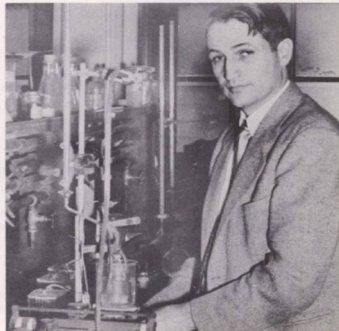


MILES EDWARDS
Portland, Oregon

CHARLES H. JOHNSON
Professor



FLOYD W. BIRD
Associate Professor





J. CHARLES NICHOL
Associate Professor



GORDON E. FISHER
Pomona, Calif.



MILLER



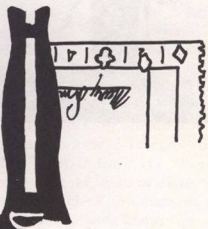
RAY PEARSON
Millington, New Jersey



RICHARD RAUTENKRANZ
Salem, Oregon



ROBERT M. PEDERSON
Astoria, Oregon



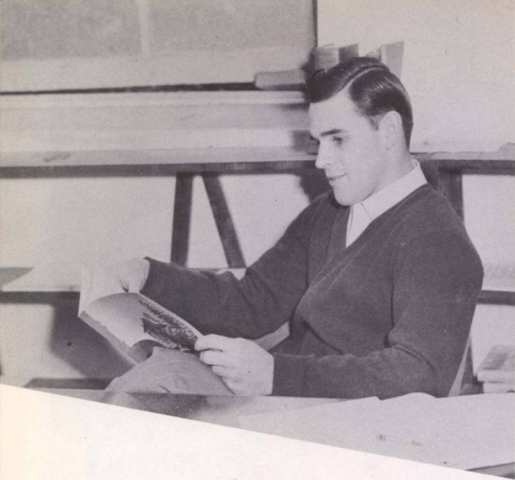
a. s. w. u.



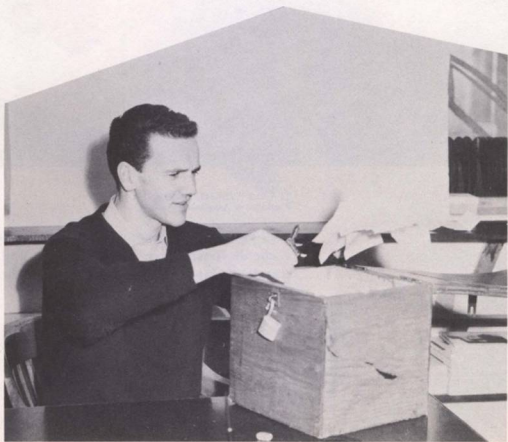


STANLEY ASCHENBRENNER
President of Associated Students

Well-known about campus is the friendly smile of Stan Aschenbrenner. Stan is majoring in Philosophy and spends several hours a week serving as Senior Scholar in that department.



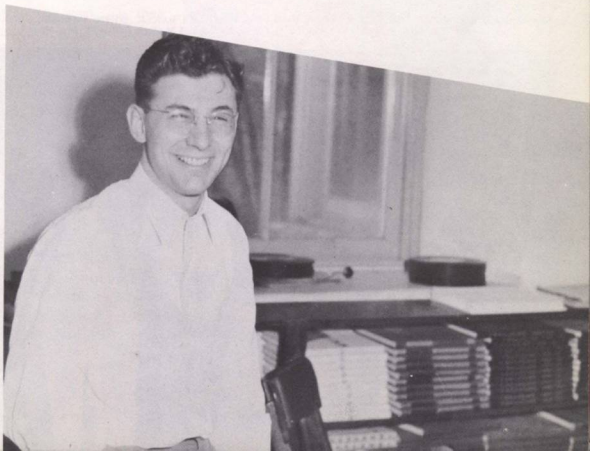
JACK BROWN
First Vice President
ASWU



DON CARPENTER
Second Vice President
ASWU



JACKIE CHUTE
Secretary, ASWU



JACK GUNN
Member at Large
ASWU

ROLLIE COCKING and PHIL RINGLE were Class Presidents for the Sophomores this year.



1951
the class of 1953—

began the year with the traditional effort to suppress the Freshman. The Sophomores entered wholeheartedly into the spirit of inter-class rivalry. Finally becoming reconciled to the newcomers the Sophomores invited the Freshmen to join them in a barn dance at which square-dancing was enjoyed by all. Class loyalty ran high as Freshmen Glee approached, and was not dampened when class members found themselves playing the major roles in Blue Monday observations as the losing class. Uncertain conditions with regard to draft status and continual calls from the armed services caused many uncomfortable hours among the men of the class as many were forced to check out of school, and others anxiously awaited definite information.

Class Officers: NORM LAWSON, MARY ELLEN PHILLIPS, BARBARA BAKER, JOHN AMBLER, GEORGE PORTER, PAUL JEWELL, HUGH NELSON, JOANN RICHARDSON, and MARIE CORNER.

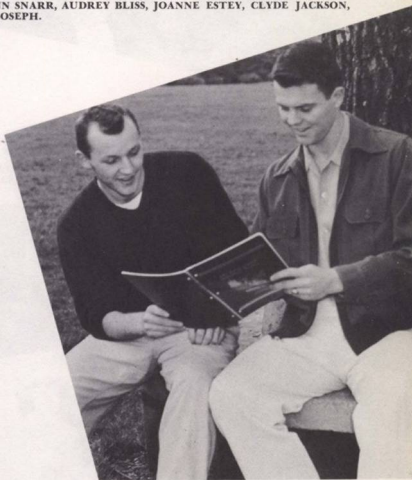




Class Officers: JIM GARRETT, BOB SCHAEFER, CAROLANN SNARR, AUDREY BLISS, JOANNE ESTEY, CLYDE JACKSON, JERRY COEN, WALLY SNYDER, and TOM JOSEPH.

the class of 1952

chose the theme "Don't give us third place, we've had it too much in the past," as they pleaded with the Glee Judges to place them first, second, or last. But the rule of consistency proved too strong, and the Juniors emerged with their third consecutive third place in Freshman Glee. The Juniors were consistently high in all other phases of campus activity, however, showing spirit and willingness to work together in class projects. Class meetings were well-attended, and a party held first semester was enjoyed by many of the members of the class. In the spring, the Juniors travelled to the beach to prepare a breakfast for the Seniors and join them for a short period of relaxation and fun. They showed their ability to assume school leadership by holding several campus offices. The third rung of the educational ladder having effectively been scaled, the Juniors looked forward eagerly to their final year.



ROD BEALS and LARRY SMITH filled the presidential posts for the Juniors.

NORTIE YOUNGLOVE was Senior Class President during the Spring Semester. BILL ROSS held that position in the fall.



1953
the class of 1951

found their last year at Willamette a memorable one. Intellectually the year was a rewarding one, for the Seniors could study intensively in their major departments. Preparation for comprehensive and oral examinations enabled them to unify and relate individual courses into basic trends, and to see their subject matter field as a whole. Socially, also, the Senior class had an outstanding year. Their sponsorship of many campus activities kept them busy during both terms, and members of the class held leadership positions in most campus organizations. The traditional Christmas party was given by the Seniors, and a spaghetti dinner and party at mid-year proved so successful that a similar gathering was held as a pre-Glee celebration. A last fling before graduation consisted of a beach trip, with the usual casualty list of sunburned faces. Graduation brings a sobering realization of both an end and a beginning—but with happy memories of an eventful year.

Class Officers: DON CARPENTER, ELEANORA LOVELESS, CHARLIE NEE, ALICE ADAMS, HOWARD MADER, NANCY PHILLIPS, and JIM LACEY.

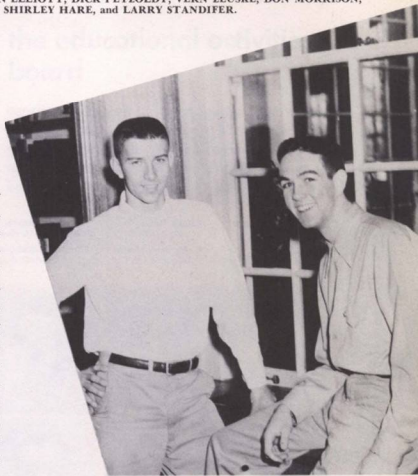




Class Officers: TED JACOB, DORRANCE NOTEBOOM, JAN ELLIOTT, DICK PETZOLDT, VERN ZEUSKE, DON MORRISON, RON BRUNK, HAL SILKE, JOYCE FROST, SHIRLEY HARE, and LARRY STANDIFER.

the class of 1954

began its first year of college with the usual confusion and uncertainty. Ensuing weeks, however, found the haze lifting, and the Freshmen were soon making other classes aware of their presence on campus. Confidence and class cohesion grew as the Freshmen assumed their share of campus responsibilities and asserted their strength in doffing unwanted Rook Caps after defeating the Sophomores in the push-ball contest at Homecoming. Faced with the problem of planning and preparing Freshman Glee, they submerged themselves in weeks of hard work finally producing a very successful program and topped it off by winning Glee. Having made their place in University affairs, the Freshmen settled down to study and prepare for a second year.



KENT MYERS and JIM BERGMAN served as Freshman Class Presidents this year.

the chapel board

has the responsibility of the planning and selection of programs for Tuesday Chapels. The Board chooses programs that they believe will prove both entertaining and of value to the students, and carries out the procedure of contacting speakers and entertainers.



Jackie Johnson

LuDene Hargrave

Harley Hoppe

Tom Scheidel

Stan Aschenbrenner

Chuck Bowe

Chuck Robinson

Daniel Schulze

G. Herbert Smith

Chester Stackhouse



the athletics board

finds that its principle job is to see that all sports are equally provided for, and that no stress is laid particularly on any one activity. Members of the Board, consisting of President G. Herbert Smith, the ASWU president, athletics head, student body manager, and two student representatives, act in an advisory capacity on matters of university-sponsored sports.



Stan Aschenbrenner

David Beckett

Jackie Chute

LuDene Hargrave

Mary Louise Lee

Bill MacDougall

Cameron S. Paulin

Murco Ringalda

Daniel H. Schulze

Janet Stark

the publications board

has the responsibility of planning a budget upon which the various student publications on the Willamette campus must operate. Consisting of the publications editors, two student body representatives, the president, and the secretary of the student body, and three faculty advisors, the board determines how much money is to be spent and in what proportions by each of the publications.

the educational activities board

consists of representatives from the departments of drama, music and forensics. Meeting early in the year, the board planned individual department budgets from the percentage of student body funds allotted to them by the ASWU office.

Stan Aschenbrenner

Jim Garrett

Margie Guice

Bob Robins

Tom Schiedel

Daniel Schulze



the social activities board

must meet often to plan the social calendar and see that events may occur according to plan. They have the responsibility of the planning and the coordination of all social functions throughout the year. The board is composed of the social chairman of all living organizations, the first vice president of the student body, and is advised by the Dean of Women, and the Dean of Men.



Alice Adams



Carl Blanes

Jack Brown

Jim Ellis

Regina Ewalt



Earl Fedje

Shirley Griffin

Mark Hatfield

Betty Howat



Sally Ogle

Jean Stewart

Harry Summers

Bob Witham

Eldon Caley
Duane Denney
Florence Goodridge



Gerry Gossett
Jack Gunn
LuDene Hargrave



Jackie Johnson
Marques McClanahan
JoAnne Motschenbacher



Mary Jane Phillips
Loren Ranton
Paul Russell



Wesley Woodard
Norton Younglove



the little hoover commission

was established to examine four major problems which faced the ASWU. The Commission studied extensively and submitted possible solutions to the Student Council. Problems investigated were: 1. The allocation of Student Body funds to the various student body activities; 2. The organization of the Student Body Finance Office; 3. The charting of the Student Body Government and the categorization of Student Body activities; and 4. Representation on the Student Council.



Mary Louise Lee, proved herself to be a very capable Publications Manager by keeping both the Wallulah and the Collegian within their budgets.

the publications department

handles business matters for all student publications. The problem of keeping within the budget is an everpresent difficulty with members of the Department. Advertising programs and the selling of advertisements kept the Business Managers and their staffs busy pounding the streets of Salem and Portland to fill up the allotted spaces for ads.

Joyce Foster, Art Wilson, and Dick Scott, ad solicitors for the Wallulah, were so diligent they exceeded the goal set for the number of sales.

Far right:
Larry Pritchett was the Advertising Manager for the Collegian.

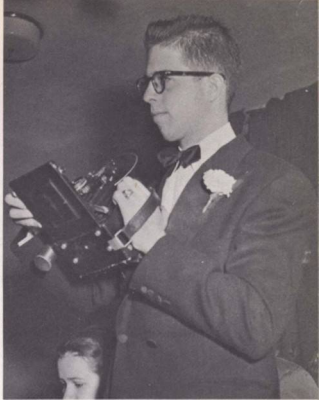
Middle below:
Bill Mosier as Business Manager of the Wallulah was in charge of selling ads to local businessmen.

Below left:
Hugh Nelson assisted Larry Pritchett in the advertising department of the Collegian.

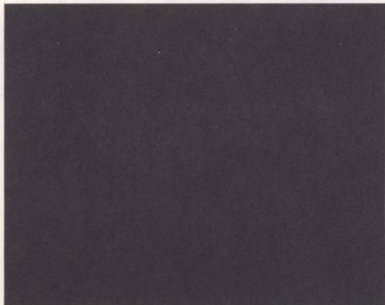


the darkroom

provides the hundreds of pictures that fill the pages of the Wallulah, as well as many of the featured pictures in the Collegian. The photographers for the Wallulah spent not only long hours making the many pictures that record all events and activities throughout the entire academic year, but had the additional problem of selecting and developing the pictures that would be most representative of the occasions.



CLIFF GREGG, Darkroom Manager, is caught in the act of snapping a picture.



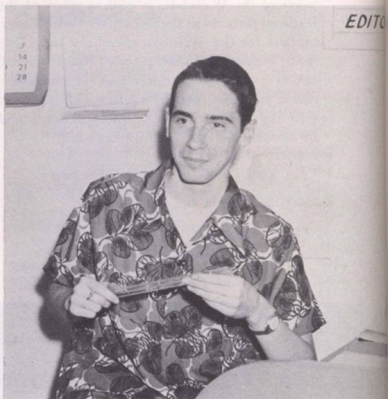
An "action" shot in the darkroom.



TOM PICKLES, darkroom assistant, examines a negative for flaws.

the collegian

staff works diligently week after week, always with an eye to the Wednesday deadline when the campus weekly must be finally "put to bed". With the aim of complete coverage of campus news as well as serving as a repository of student public opinion, student reporters carefully canvass all news leads and possible feature stories. Problems of selection of newsworthy items, matters for editorial comment, layout, rewriting, and circulation are in the hands of the students. Printing of the paper is handled by the presses of the Salem Statesman.



Hard-working Editor of the Collegian,
BILL McDOUGALL.



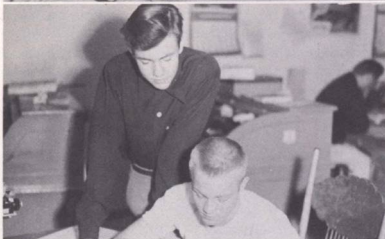
The Collegian staff hard at work on
any Wednesday night.

MARY LOUISE LEE, News Editor, and **JIM FREEMAN**,
Copy Editor, make the final check.





JEAN GILMER, Society Editor and **DON SCARBOROUGH**, Campus Editor, look over the latest campus news flash.



PAUL BARKLA, Circulation Manager, wonders if Sports Editor, **STAN NELSON**, will make the deadline.



Below:
KEITH LAWRENCE, Photo Editor, decides which photo should illustrate the story that **KENT LAWRENCE**, Rewrite Editor, is working on.



The Collegian staff puts out the paper under the guidance of **MR. RINGNALDA**.



JANET STARK took over the editorship in February and guided the staff in producing the Wallulah. Janet's unfailing good humor was the chief factor in actually getting the book to the printer.

wallulah

staff members found that the field of journalism is not all glamour and excitement. The question in the minds of many was whether the glory of the journalist is equal to long days and nights of toil and confusion. With the leadership of Janet Stark, however, Wallulah staffers managed to struggle through all difficulties until the final picture was pasted in its proper place, and the last caption was typed. Putting out the year book had produced trying occasions for everyone concerned, but when everything was completed and filed with the printer, the consensus of opinion was that working on the Wallulah was "blood, sweat and tears".



Pasting panels and trying to label each picture correctly makes up a large part of working on a yearbook.



CLIFF GREGG, Photography Editor and champion picture-taker on the Willamette campus, was in charge of acquiring or producing all the pictures in the Wallulah.



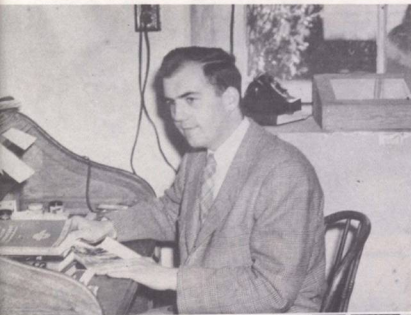
ANN AVRIETTE, Copy Editor, was general manager in charge of words, words, words.

Beginning toward the middle of the Fall Semester and not stopping until a few weeks before the end of the Spring Semester, the Wallulah staff worked toward the goal of publishing a year book that would be enjoyed by all students and friends of Willamette. The Wallulah office became a favorite gathering place for late wanderers-about-campus as the date of the deadline approached and staff members put in more and more late hours in the basement of Waller Hall. A final word of appreciation must be extended to all "visiting editors", who spent many hours with the staff and gave so freely of their advice.



DIANE PROCTOR, Layout Editor, and **NANCY LAWSON**, Art Editor, planned and arranged the art work and overall appearance of the Wallulah.

SCOTT THOMSON, Sports Editor, sometimes found it necessary to revert to the famed elixir, Hadalluloh, for moral support.



DOUG STEARNS was Editor of the Wallulah until his graduation in February. His chief contribution was in planning and organization.



The Wallulah staff in the usual turmoil of phone calls, glue pots, dummy sheets, and typewriters.

the fusser's guide

proved to be a constant source of reference to all students. The tremendous task of publishing a complete list of names and addresses of campus personnel for the benefit of busy fussers was undertaken with complete success by members of the staff of the Fusser's Guide.



Artist **DIANE PROCTOR** adds the final touches to the Rook Bible.

the rook bible

is published yearly as a guide to Freshmen, to inform the new students of important campus traditions, institutions and rules. That Freshmen should have this booklet always in their possession as well as knowing the contents in its entirety is considered of paramount importance by Lettermen.



PRUDENCE CRAIG, Editor of the Rook Bible.



Staff members of the Fusser's Guide had a serious problem in getting all names and addresses correctly.



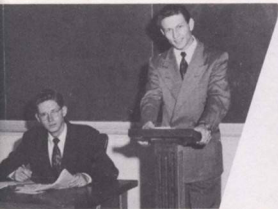
PAT ZAHARE and **DAVE BERRY**
Editor and Associate Editor of the Fusser's Guide.

forensics

has produced one of the most active extra-curricular groups on campus this year. Trips to speech tournaments throughout the West have kept them busy a large part of the year. The team has been consistently successful in winning individual and team honors to add more trophies to the growing collection. A nomination to participate in the West Point speech tournament was won by the senior debate team.



JACK GUNN, DR. RUNKEL, and TOM SCHIEDEL display the trophies won at the West Point tournament.



JIM WOODS and MARQUES McCLANAHAN participate in a practice debate.

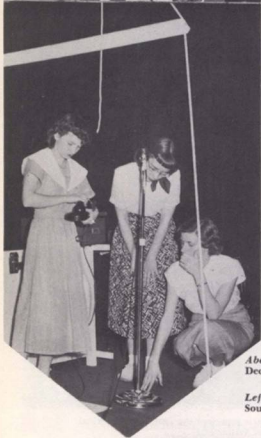
JACK GUNN is Forensics Manager.



These girls represent the feminine oratorical ability of Willamette.

The entire Forensics group gathers for a shot of the students who represent Willamette at the speech tournaments.





Above left:
Deciding which lines will have to be cut.

Left:
Sound effects are also created by the students.

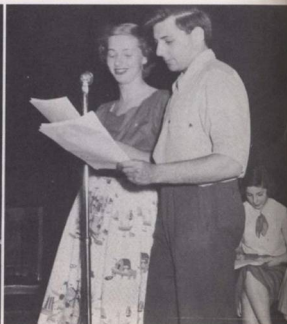


Students play back a recording of the program before it goes on the air.

the university workshop

has presented such productions as one-act plays, forums, and reviews of important events on campus. It is presented each Sunday night over radio station KOCO. A new practice this year has been the transcription of the programs before actual presentation on the air.

The cast rehearses the program before making the recording.





Make-up for the plays is an important and very precise art.



The lamplighter in "Le Petit Prince."

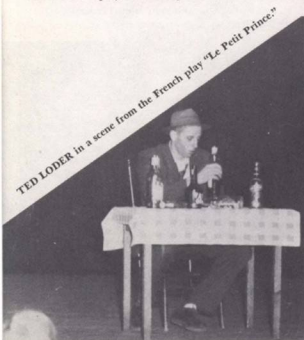
the drama department

in presenting three major productions of plays this year, has kept Willamette dramatists in constant activity. Extra-curricular productions gave drama classes the opportunity to put into practice the theories learned in the classroom as well as giving students not in the department the occasion to satisfy hidden thespian desires. Difficult problems of staging, lighting, make-up, and general stage assistance have been deftly handled by students.

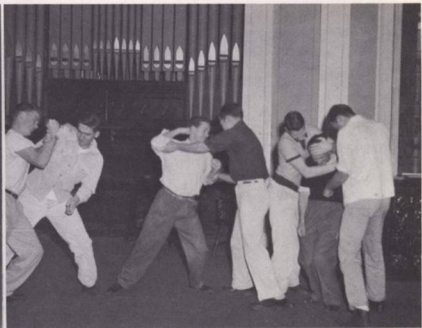


KEITH and KENT LAWRENCE and LEAH CASE in the French play, "Le Nartique."

Rehearsal of a scene for "Murder in the Cathedral" becomes a little violent.



TED LODER in a scene from the French play "Le Petit Prince."



the university band

can be credited with much of the spirit that is raised at athletic events. Besides the presentation of snappy formations and drills at football games, the Band entertained spectators at basketball games and rallies with impromptu concerts. A tour made early in the Spring semester took the group on a series of concerts through a large part of the Northwest, where they proved to be a big attraction at all stops. The Band and the Orchestra together contribute much to the tradition of fine music on the Willamette campus. The tours and concerts of the two groups have great factors in building the musical reputation of the University.



Members of the Orchestra seem to be concentrating intently on the score at a rehearsal.



Rehearsal by the Band often offers impromptu music for students and faculty members as the music floats about the campus.

The University Band presented its annual concert early in the spring.





Orchestra members donned formal attire for their concert in the gymnasium.

the university orchestra

is seldom seen, but there is much background work that makes it an invaluable part of the University. Two occasions on which the students are able to hear and appreciate the orchestra are the annual presentation of the Messiah and the annual concert. While public appearances bring fame to the orchestra, it is in the training of students of instrumental music that it has its greatest value. Here students are given the opportunity not only to participate in interpreting fine music, but also gain experience and training in conducting.



CHUCK MARTIN
Drum Major



Willamette's musicians take an intermission during the concert.



Members of the A Cappella Choir prepare to get on the bus that took them on the tour.



Left: Practice, Practice, and more Practice!

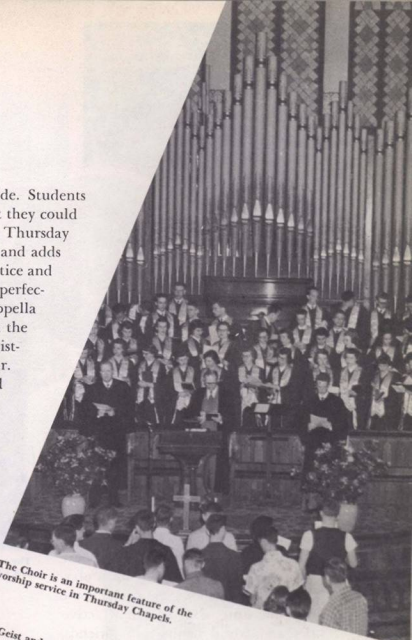


A concert for the students in the Gymnasium.

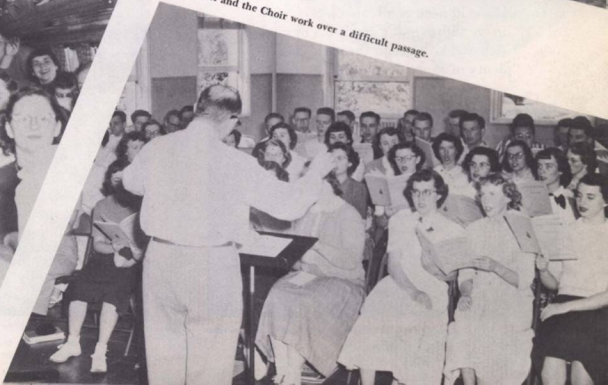
A large sign assures proper identification.

the a cappella choir

has made students point to them with justifiable pride. Students look forward to concerts by the Choir and wish that they could be heard more often. The Choir's participation in Thursday Chapels is a source of appreciation and inspiration and adds much to the devotional services. Long hours of practice and hard work are necessary to achieve the polish and perfection that has made the Willamette University A Cappella Choir one of the most outstanding college choirs in the country. Outstanding projects of the Choir are Christmas caroling on campus and the annual spring tour. The tour this year was through eastern Oregon and Idaho where they were heard by large and appreciative audiences.



The Choir is an important feature of the worship service in Thursday Chapels.



Dean Geist and the Choir work over a difficult passage.



All set to start on the Spring Tour.



Students find friendly and helpful service at the Bookstore.



MRS. DELSIA LARSON, manager of the Bookstore.

the book store

is operated as a service to the students trying to fill the constant demand for more and more textbooks. Books, however, are not the only commodity available in the campus general store. Students find it possible to purchase not only school supplies, but also such essential items as stationery, sewing kits, University and fraternity banners, and stuffed animals of the appropriate colors and slogans.



The staff at the Bookstore always tries to know just where the right book is.

the 'cat cavern'

is the commonly accepted gathering place for students and professors who find themselves with a little free time. Relaxation in a friendly atmosphere over coffee or cokes with records playing on the juke box gives students the opportunity to talk over campus activities and world affairs with friends. Those in need of a between-class pick-up are able to grab a candy bar or sandwich and still get to the next class in plenty of time.

Where the elite meet to eat, the Cat Cavern.



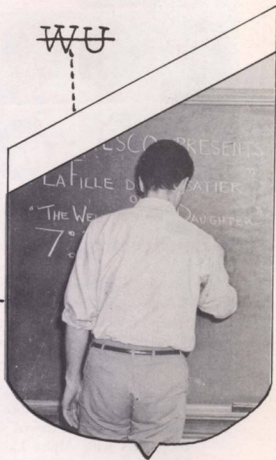
The 'Cat staff waits for the next between class rush.



MRS. ELLA MAY DURKEE, Manager of the 'Cat Cavern.



WU



**honoraries,
clubs**

alpha lambda delta

is a national scholastic honorary for all women who have obtained a grade point average of 3.5 or above in their Freshman year. The group works towards higher standards of scholarship on the campus. During the year they held a formal banquet and a mixer for eligible Freshmen women.



H. Aller
W. Aller
V. Benner
S. Clifford



D. Detlofsen
J. Edgell
J. Foshee
S. Griffin
S. Helweg



N. Marks
J. Motschenbacher
M. E. Phillips
S. Shipley
E. Wheeler

phi eta sigma

is composed of men who have attained a grade point average of 3.5 or more during their Freshman year. This national scholastic honorary cooperates with Alpha Lambda Delta toward high scholastic standards for the entire student body. Jack Gunn was Senior Advisor to the group, and Mark Hatfield was Faculty Advisor.



M. Hatfield

J. Jackson

J. Ambler
J. Freeman
K. Lawrence

R. Bain
C. Gregg
G. Porter

D. Denney
J. Gunn
A. Rivness



A. Bailey
J. Crakes
S. Griffin

B. Baker
P. Edwards
S. Helweg

S. Clifford
D. Fisher
N. Lawson

beta alpha gamma

is an honorary for Sophomore women who were outstanding in campus activities during their Freshman year. The activities of the group include an annual dinner-dance with Sigma Alpha Chi, selling candy at living organizations, and ushering at school functions.



N. Marks
D. McCulloch

M. E. Phillips
S. Shipley



J. Ambler
D. Beery

B. Bain
R. Bolliger

sigma alpha chi,

a Sophomore men's service honorary, bases its membership upon scholarship and leadership qualifications. Assisting at school elections is one of the functions of this organization.



B. Collier
D. Denny

J. Jackson
N. Lawson

G. Porter
P. Ringle

D. Scarborough
T. Schiedel



J. Carlson
J. Chute
J. Gilmer
F. Goodridge

cap and gown,

Senior women's honorary, has been active this year in the establishment of an Associated Women Students organization. With more members than in former years, Cap and Gown is approaching its goal of affiliation with its national equivalent, Mortar Board. Members are chosen on the basis of character, activities, and scholarship.



M. Guice
P. Hammond

M. Powell
M. Sparks

alpha phi omega

is a national Boy Scout honorary which draws its membership from former scouts. The organization has been active in checking attendance at Tuesday and Thursday Chapels. They also had the responsibility of serving the May Week-end barbeque.



L. Cramer
E. DuVall
T. Edwards



E. Gordon
D. Gregg
C. Greer
D. Gunther
B. Hess



J. Lacy
H. Nelson
C. Oliver
F. Riebe
W. Stanton

theta alpha phi,

national dramatic fraternity, assists in the University dramatic productions. Since Theta Alpha Phi is an honorary, membership in the organization is on a selective basis and requires a grade point average of 2.5 or more. Participation in a major dramatic production is also a membership requirement.



S. Dean
M. L. Lee

M. Gulce
S. Mellor

P. Hammond
G. Nandie

N. Haynes
C. Person

C. Blanes
K. Lawrence
M. Sparks

E. L. Ball
A. Bliss
K. Lawrence
R. Witham



H. Aller
M. Benard



G. Blue
V. Benner



N. Cox
A. Deakins



J. Foonhee
B. Gertson
A. Gibbons
L. Gottwald
B. Gustafson
G. Hale
E. M. Hill



J. Johannaber
D. McCain
J. Parker
M. Powell
J. Rice
G. Simons
N. Smedley

mu phi epsilon

is a national professional music honorary. Membership is based on character and scholarship. The girls of Mu Phi had an active year holding a Valentine's Day Dance, a combination concert and tea, and entertaining Freshmen music majors at another tea. Lois Gottwald headed the organization in the Fall, with Jodie Johannaber assuming the presidency in the Spring.

Members of the Lettermen's Club at a policy meeting.



Officers of the Lettermen's Club:
GENE PEYTON, CHUCK BOWE, and
BURNELL AMBROSE.

lettermen's club

membership consists of men who have earned letters in one of several intercollegiate sports in which Willamette participates. The Club began its year's activities by disciplining the Freshmen in Kangaroo Kourt and at the Freshman Leaf Rake. Another of their functions has been the selling of refreshments at athletic games at McCulloch Stadium and at Student Body dances. Their chief activity of the year is the sponsorship of the Varsity Ball and the selection of a Varsity Queen and her court to reign over the Ball.



At meetings members of the Varsity do not always agree on matters of policy—spirited discussions usually follow.



L. Aldrich
M. Bates
C. Rowe
M. Cotton
C. Conner
B. de Bord

B. Ewaliko
F. Gatchell
C. Girod
M. Glenn
D. Hooford
D. Humphries

F. Jewell
T. Luder
J. McHale
J. Markoskie
B. Mandlin
T. Mertz

A. Miles
E. Miller
A. Minn
D. Montag
J. Noa
D. Perlman

D. Petzoldt
G. Peyton
G. Porter
L. Prediletto
W. Richardts
C. Robinson

I. Roth
B. Seamster
B. Shangle
V. Shangle
J. Skimas
L. Smith

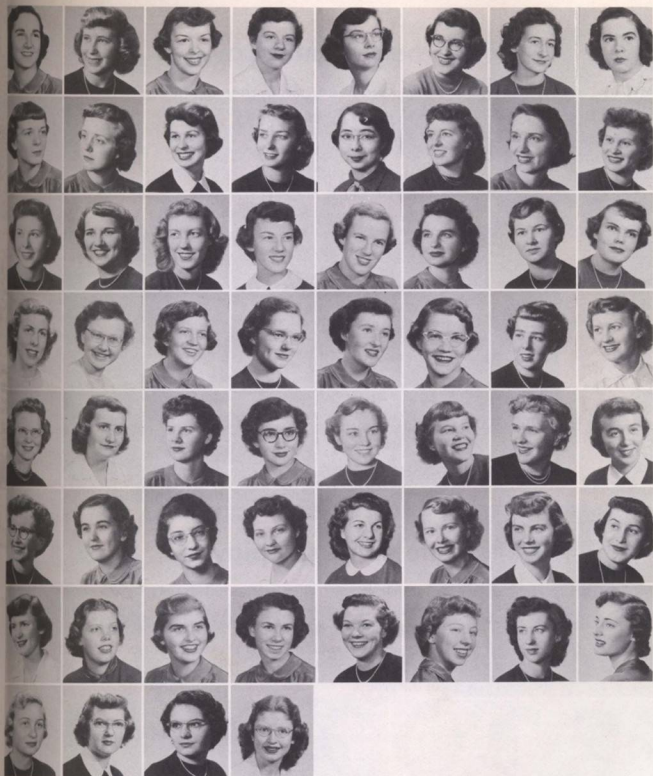
W. Stauffer
B. Taylor
S. Thompson
B. Van Horn
B. Warren
B. White

D. Ruff
B. Ambrose
W. Roe
D. Logue



From left to right, first row: Tom Burns, Tom Enright, Jack Farrel, Robert Jones, Gordon Teter, Charles Burt, Henry Ohlman, Dean Seward Rese. Second row: Murley Larimer, Glen Seidler, William Hallin, Charles Cloudy, Robert Wall, Robert Smith, Billy Simms. Third row: Dale Pierson, George Wilson, William Pilling, Don Buss, Ortis Goakey, John Matheny, Dick Brownstien, Warren Albright, Elmer Baldwin, Joe Larkin, Anthony Brosterhous. Fourth row: Julius Slocum, Douglas Kaufman, Grant Mumpower, Robert Gibson, Robert Dunn, Ken Puckett, Sylvan J. Fritts, Les Hampton, Leonard McBride.

Phi Delta Phi legal fraternity has its purpose in giving members the opportunity to review law school courses. A national legal fraternity, Phi Delta Phi membership is limited to the top one-sixth of the class with initiation being held at the beginning of the second semester.



C. Arpke
C. Asvik
C. Averill
C. Banta
J. Beckham
H. Bennett
A. Cantril
M. Cone

J. Connell
C. Crane
J. Crouch
J. Currie
M. Dawson
M. Diets
J. Elliott
C. Emerson

M. Enns
N. Erickson
A. Girod
F. Graham
J. Gray
D. Gustafson
J. Haight

E. M. Hill
J. Hirtzel
J. Horn
B. Howat
M. Ingraham
M. L. Johnson
E. Kinser
A. Klug

T. Klepp
A. Klindworth
J. Lanke
L. Lauber
M. Leonard
N. Lumijarvi
J. McCormick
D. McCulloch

M. MacLaughlan
M. Marshall
M. Meiseger
D. Miller
V. Nichols
J. Notson
P. Palmer
M. E. Phillips

S. Phillips
N. Pratt
B. Rands
J. Rankin
M. L. Rateliff
J. Robertson
B. Royer
F. Smith

J. Stewart
S. Swoboda
L. Todi
M. White

pep cats

are the girls who support the Yell Squad in fostering spirit at school athletic contests. Easily recognizable in their white skirts and white sweaters with the Bearcat emblems, they sit in a group at football and basketball games thus forming the nucleus of the Willamette rooting section. The group also offers half-time entertainment from time to time by the presentation of marching formations and pom pom drills.

future teachers of america

is an organization composed of students in education who plan careers in the teaching field. The group meets once a month to discuss common problems, current trends and issues in education, and to hear speakers on these subjects. Such an organization helps to develop a professional attitude on the part of future teachers, by developing and clarifying their aims and goals.



H. Robins, Pres.
C. Howe, V. Pres.
W. Woodard, Sec.
B. Ambrose, Treas.



Dr. MARTIN acts as advisor to the group of future teachers who get together to consider professional problems.



C. Blanes
M. Conklin
J. Foosee
B. Lidtke

A. Bliss
S. Dean
J. Gay
K. Lawrence

R. Geer
A. Lilles

M. Guice
S. Meller

P. Hammond
P. Older

N. Haynes
C. Person

B. Kaplan
M. Sparks

J. Lacy
K. Witham

willamette university players

is a very active campus group. They sponsor all the plays produced by the Drama Department in collaboration with the Salem Kiwanis Club as well as sponsoring the W.U. Workshop, the weekly radio program. In its first year, this year, the organization has proved an outstanding addition to university life. Senior Scholar in Drama, Marion Sparks, has been Director of the group.

campus y,

less generally known as the Y. M. C. A. on this campus, is a service organization with the aim of serving Willamette University and the community of Salem. Under the leadership of Wes Stauffer, president of the group, they have been busy on campus this year in various drives to raise funds for helping to support a foreign student at Willamette. The Campus Y cooperated with the Campus Y. W. C. A. in planning and managing an International Weekend. A Thanksgiving worship service is an annual activity which is sponsored by the group.



M. Bates
C. Grez

R. Cocking
W. Moore



D. Emper
W. Stauffer
C. Todd



J. Oliver

J. Holbeck

B. Baker

M. Aldinger

W. Woodward



campus y.w.c.a.

began the year early with its annual big-little sister program in an effort to help Freshmen women get acquainted with campus affairs. Later in the year they sponsored a leadership training program and cooperated with the Campus Y.M.C.A. in sponsoring International Weekend. Other activities of the year included a trip to the mental hospital and a bazaar to raise funds for the support of a foreign student on campus.



S. Clifford
B. Gustafson
M. McDermott
S. Shipley

F. Goodridge
S. Helweg
N. Marks
C. A. Snarr

S. Griffin
J. Johnson
B. J. Mullin
D. Spehrink



E. L. Ball
D. Card
D. Hitchman
L. L. Newton
P. Russell

R. Batchelder
D. Dattlofsen
A. Lillis
H. Oakes
R. Small

G. Buland
D. Ewen
H. Mader
J. Richardson
J. Wilson

young republicans

of Willamette University began the year by attending in a group the State Convention of Young Republicans held in Eugene in October. There they proved themselves to be an effective organization in representing campus political thinking, and were successful in sponsoring Howard Mader to be elected as Regional Representative. Throughout the year the group has continued its activities toward intelligent and well-informed political thought under the leadership of Don Hitchman, president, and Professor Freeman Holmer, advisor. Their outstanding activity of the year was active participation in the campaign for the election of Dean Mark Hatfield to the State Legislature as Representative from the city of Salem.

A discussion group at a meeting of the Young Republicans.





S. Ambler

J. duBuy



R. Endsley
J. Lacey
H. Oakes
E. Recher

D. Ertsgaard
J. Lambert
E. Oberst
D. ReVille

P. J. Hammond
J. MacDougall
N. Phillips
J. Rowland

psychology club,

an organization composed mostly of psychology majors, but admitting also to membership interested students from other departments, meets for the purpose of discussing current trends and problems in psychology. The group works toward more complete understanding of the needs of psychology in the modern world. The Club sponsors forums and guest speakers in programs for students and the public.

inter-faith council

is a coordinating council for the various campus religious groups. Cooperative religious events are scheduled during the year along with the Council's main project which is to plan and supervise Religious Emphasis Week. Membership consists of the presidents of the campus religious organizations.



R. Beals
C. Gillihan
J. A. Oliver

C. Blanes
W. Jessup
D. Poindexter

J. duBuy
J. Kiekie
W. Stauffer



SHIRLEY DEAN plays the piano while BUD CORNER sings during the worship service.



wesley

under the general theme "Wesley Builds," attempts to correlate a program of fun, intellectual endeavor, and service. The Methodist students of Willamette University, grouping their various activities under the titles "fun time," "brain teasers," "student programs," and "service," find ample opportunity for religious expression. "Fun time" activities include parties, Sunday evening ice-breakers, Silver Creek Falls retreats, a tea for Wesley "adopted Church Mothers," and a Senior Farewell banquet. "Brain teasers" for the group are addresses and discussions on world politics and Christian attitudes, the problem of evil, and a personal devotional life. "Student programs" presented a drama, "The Bomb That Fell on America," an interpretive dance program, and an Easter concert by music students. "Service," by Wesleyans was in the form of the collection of clothes for Korea and items for the church room, a hymn-sing for shut-ins, and a corps of waitresses and dishwashers for Church dinners.



Wesleyans pack clothes to be sent to Korean war victims.





Wesley members pose for photo on the Silver Creek Falls retreat.



GLORIA NANDIE and JOYCE KIRBY are all packed and waiting for transportation to Silver Creek Falls.

Highlights of the Wesley year include the Oregon Methodist Student Movement Retreats at Camp Magruder on the coast. Wesleyans join in campfires, beach hikes, and folk dancing as well as seminars and bull sessions. Most noted speaker this year was Bayard Rustin, college secretary of the F. O. R., who touched off much discussion with his addresses on "The Practical Application of Christian Love." Significant in Wesley's program is group and individual worship, emphasizing the Christian nature and basis of the organization. The primary aim is to develop mature religious thought and provide opportunity for religious experience.

At the retreat BAYARD RUSTIN speaks to the group on "The Practical Application of Christian Love."



The Methodist students gather at the First Methodist Church for silent worship and prayer.



S. Cheavens
W. Jessup

B. Foster
D. Kaemmer

C. Hull
E. King



M. L. Lee

S. Mellhenny



canterbury club

is an organization of the Episcopal students of Willamette University. Meetings held every Sunday are for the purpose of group worship and discussion. A worship service in the chapel followed by refreshments and discussion gives the students the opportunity to better understand their religion and exchange ideas on problems of a religious as well as a social nature.

F. Bomber
P. Cowan
N. Gore
A. Lattie
K. Revis

A. Brosterhous
D. Dougherty
A. Koch
J. Maletis
M. Sweeney

R. Charrasse
C. Gillihan
D. Kostny
D. Mears
B. Witham

newman club

is affiliated with the national Newman Club Federation which has chapters on most college campuses throughout the country. Membership in the Club consists of Willamette students of the Roman Catholic faith. The group cooperated in the presentation of Religious Emphasis Week programs and carried on a religious, intellectual and social program which included several communion breakfasts.



G. Krzyzkowska
W. Mosier

R. Lancaster
G. Renner



phi zeta christo

is an organization of college age young men and women at the First Christian Church in Salem. The group meets every Sunday night to carry out a varied program of recreation, intellectual endeavor and worship. Members are given the opportunity to gain a knowledge of church affairs and operation through regular participation in church work.



I. Bates
M. Bates
B. Breakey

J. duBuy
D. Caley
D. Mercer

J. Rautenkranz
A. Tarem
L. Todd

westminster fellowship

is a college age group of Presbyterian preference. Meetings are held at the First Presbyterian Church every Sunday evening. During these meetings, members of the group participate in a worship service keyed to the religious ideals of college age people, group entertainment, and discussions of matters related to the understanding of Christianity in today's world. The outstanding social event of the year was a retreat to the beach at Nelscott for a weekend early in the Spring.

D. Ackerman
B. Baker
R. Bartlett
R. Beals
D. Berry
A. Bliss
B. Boatman
M. Campbell

M. Conklin
G. Connell
L. Conner
M. Davis
D. Detlofsen
J. Freeman
R. Goff

S. Griffin
D. Gustafson
S. Helweg
J. Hirtzel
J. Jackson
J. Johannaber
L. Johannaber
K. Lawrence

K. Lawrence
N. Marks
J. Morgall
K. Myers
C. Person
G. Porter
P. Ringle

J. Robertson
S. Shipley
M. Sparks
D. Stoddard
T. Walker
G. Weeks





Students and friends enter Waller Hall for a foreign film sponsored by UNESCO.



Above: Members listen to a special report.

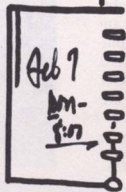
Below: UNESCO officers attend cabinet meeting in the library.

unesco

rounding out its first year on the campus, is seeking through constructive programs to develop at Willamette a dynamic interest in the culture of other nations and of our own country. Unesco has begun a program of language tables and foreign films, a library of publications on international affairs and study abroad, discussion meetings, and a campus literary publication.

Members of UNESCO seem to be quite serious about the discussion.





campus
activities



Long, weary lines and puzzled faces—another day of Registration.

orientation week

is planned in an effort to prevent the complete discouragement of the Freshmen before they ever get started. A careful program of orientation is planned to answer questions and anticipate possible problems involved in registration and adjustment. By the end of the week of orientation, Freshmen feel that they are really a part of the University.



Freshmen sat on the floor of the gym to watch entertainment.



Lunch was served barbeque style on Sweetland Field.

Competitive games entertained Freshmen at the mixer in the gym.



Freshmen were entertained at a special luncheon at Baxter Hall.



Freshmen were presented to Dr. and Mrs. Smith at the President's Reception.

Each year the students return to the campus from long vacation periods to face the confusion of registration, they assure each other that the greatest test put to the college is the successful completion of the maze that is known as registration. Perseverance, however, wins through, and compensation comes with the feeling of achievement that comes as the last card is filled and filed. Then the day of registration gives over to the pleasure of renewing friendships, meeting new friends, and making plans for another year of the social and scholastic activities that make up the Willamette community.



AMARYLLIS LILLES and PHIL RINGLE entertain at the Freshman Mixer.

"Big sisters" and "little sisters" get together at the Y.W.C.A. mixer.





Everyone is happy as the choices are finally made.



Beta's greet rushees at the door for the first round of parties.



D.G.'s and rushees in informal circles.



Alpha Chi's offer entertainment.

Below left:
Rushees anxiously await bids.

Below right:
Phi Delt's and guests talk things over.



fall rushing

was held during Freshman Week. Almost as soon as they arrive on campus, the Freshmen find themselves swept into a whirl of teas and parties that are a part of fraternity rushing. Fraternities and sororities plan social affairs that will enable the rushees to get acquainted with the various groups. The week is climaxed by the pinning on of ribbons and pins when the rushees accept the bids of the fraternity of their choice.



Wise judges, TED MERTZ, CLAUDE NORDHILL, and LOU SCRIVENS discuss merits of the case.

kangaroo kourt

is an effort on the part of the Lettermen to make Freshmen realize that they are not necessarily human. One Tuesday Chapel was set aside for the purpose of impressing on the minds of recalcitrant Rooks the importance of wearing Rook caps and obeying sometimes arbitrary and even impromptu rules. Since Frosh are always guilty, there is merely the formality of calling the offender to the bar and pronouncing him so. Sentences passed and executed are particularly enjoyable to upper-classmen who watch the defenseless Freshmen perform onerous assignments suitable to their abilities.

Free lessons on dancing the Charleston.

Perhaps a re-arrangement of madame's coiffure?

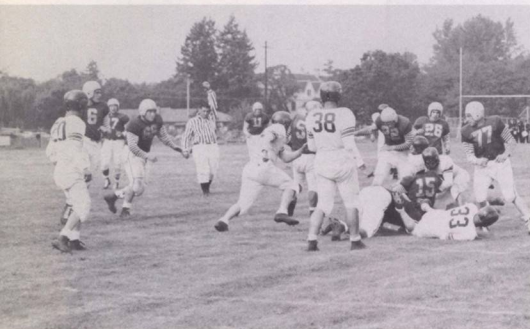


Lettermen check to see that the patches are just right.

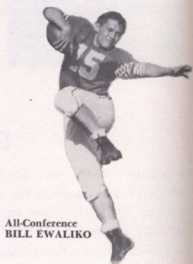


football action

In the Autumn, with its football thrills, one is assured that college is ever the same interesting and challenging place. Here is depicted the aggressive type of football played by Willamette gridders this year.



BILL EWALIKO finds it tough going as **JOHN MARKOWSKIE** and Western Washington College gridders look on.

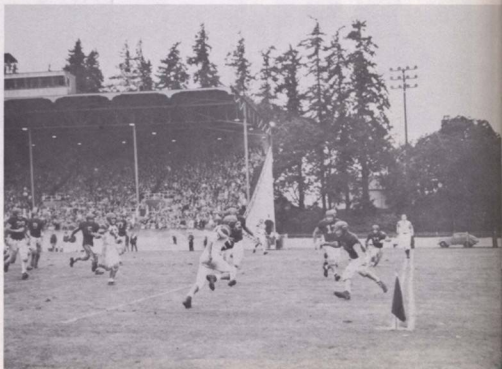


All-Conference
BILL EWALIKO



All-Conference
AL MINN

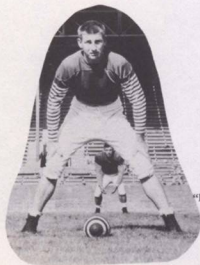
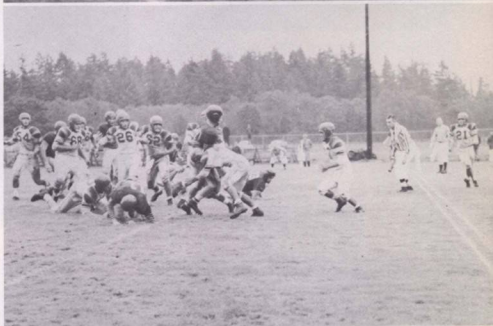
A Rainbow is stopped
near the pot of gold by
MINN and **EWALIKO**.



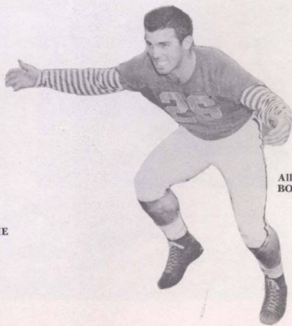
Halfback **BOB TAYLOR** is shoved out of bounds by two Hawaii men in the Homecoming game.



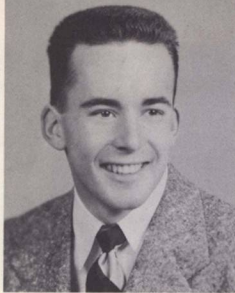
Quarterback **RICK BINGHAM** picks up four yards on a sneak off right guard.



"Iron Man" **MARKOWSKIE**

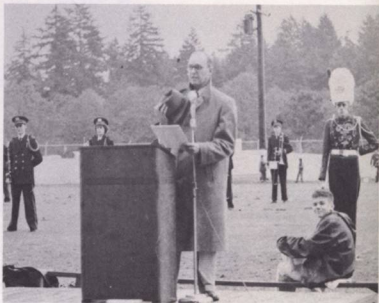


All-Conference
BOB HALL



SHERM BLISS, Homecoming Manager.

MR. ROBERT NOTSON leads the dedication ceremonies.



The University Band goes into formation to serenade the audience.



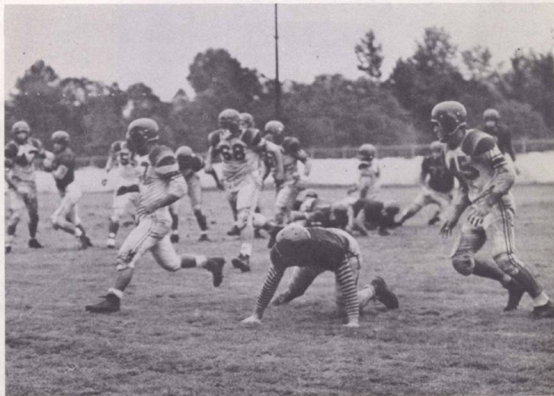
CHARLES E. McCULLOCH presents McCulloch Stadium to the University.

STAN ASCHENBRENNER, Student Body President, presents Mr. McCulloch with a Willamette blanket.



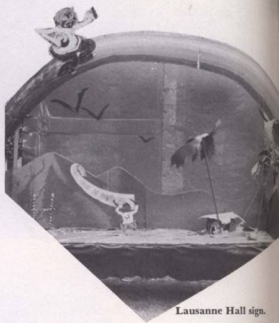
A congratulatory speech by Governor DOUGLAS MCKAY.

An exciting game with the University of Hawaii Rainbows ends in a 21-21 tie.

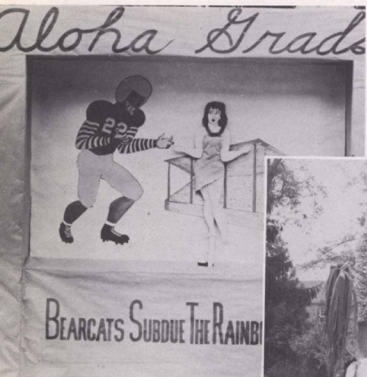




Pi Beta Phi took first place in the women's division of the sign contest.



Lausanne Hall sign.



Baxter Hall sign takes a new approach to the subject.

The Chi Omega's sign won second place.





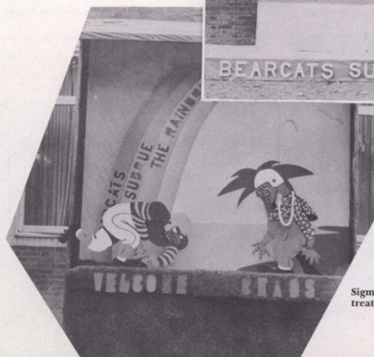
Homecoming Manager, Sperm Bliss, presents Noise Parade Trophy to JOAN CARLSON for first place Delta Gamma's.



DIANE PROCTOR and DICK ENDSLEY look over first-place trophies for sign contest.



Winning sign in the men's division by Beta Theta Pi.



Sigma Chi sign depicts proper treatment for the Rainbows.



The band plays against a background of a roaring bonfire as the students whip up the will to win at the rally in Bush's Pasture immediately after the Noise Parade.

homecoming weekend

was officially inaugurated on Friday morning with the Freshman Leaf Rake in preparation for the return of hundreds of alumni. Freshman got up at five o'clock and industriously raked until all leaves were removed from the campus, and then retired to Chresto Cottage for a breakfast of hot chocolate and doughnuts.

Freshmen rake leaves in the early hours of the morning.



Doughnuts and hot chocolate revive their spirits.



Following rapidly on the heels of the Leaf Rake was the Noise Parade through down-town Salem to the new McCulloch Stadium for a rally. Members of the various living organizations piled onto trucks and did their best to split the eardrums of townspeople with air whistles, train bells and any other available noisemakers.



S.A.E.'s were the noisiest men in town that night.



D.G.'s made the most noise in the women's division of the Noise Parade.



COACH STACKHOUSE discusses possibilities of a victory.

A banquet for the alumni was held in Lausanne Hall.



Receptions on the following day were held in honor of the alumni as all living organizations held Open Houses. Main event of the weekend was the football game against the University of Hawaii Rainbows. Dedication of the new stadium took place during the half-time ceremonies. Charles E. McCulloch, presented McCulloch Stadium to President G. Herbert Smith who accepted on behalf of the University. The Homecoming Dance that evening on a Hawaiian theme in honor of the visitors topped off a very successful series of activities that made up the twenty-seventh annual Homecoming.

Below:
JACK BROWN seems to be keeping
Pi Phi's and Sigma Chi's
well entertained.



Alpha Chi's and Baxter men check the floor for dancing possibilities.



Left:
Beta's and D.G.'s take
time out from dancing.

firesides

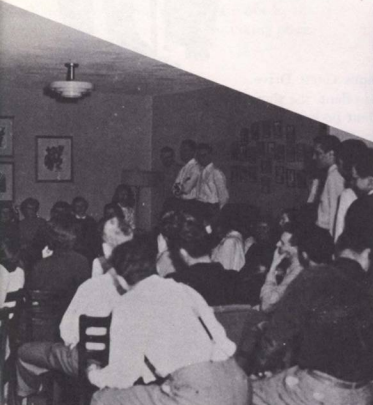
are planned by all living organizations in a program of exchange dinners and firesides for the purpose of getting better acquainted and as occasions for friendly social gatherings. Because of the heavy schedule on the social calendar this year. Thus each women's group had one fireside with each of the men's groups. Firesides are planned as informal get-togethers for casual conversation and dancing. The entertainment was usually of a humorous nature, and provided many amusing memories of the events.

Right:
"Luke" offers a little unusual
entertainment for Phi Delta's
and guests.

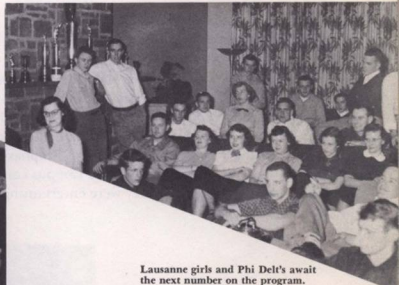




Delta Gamma's and Beta's find entertainment at the D.G. House very amusing.



Chi O's and S.A.E.'s gather around for the evening's entertainment.



Lausanne girls and Phi Delt's await the next number on the program.



Pi Phi's and Sigma Chi's enjoy an evening of dancing.



BILL BISSELL
Manager of Varsity Varieties.



A vocal duet by **BILL BISSELL**
and **JACK BROWN**.

varsity varieties

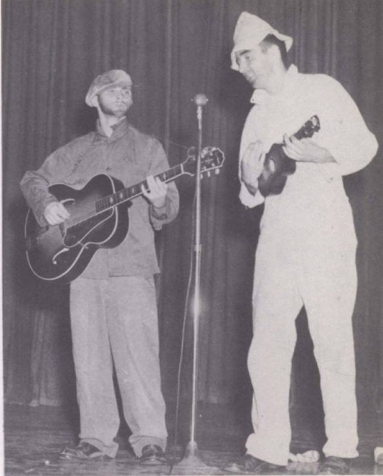
was presented in cooperation with the Annual Campus Chest Drive. Student-planned and produced, and featuring campus talent, the show is always a source of good entertainment for the student body and the people of Salem. Talents of unusual nature are discovered in unsuspected sources, and each act brings new surprises. Emphasis this year was on the humorous side of entertainment, and campus comics enjoyed themselves just as much as did those they were entertaining.

Campus Chest Committee:
**BILL BISSELL; ELEANORA
LOVELESS, Chairman; and
FELIX CALKINS.**



the campus chest drive

was the motivating force behind Varsity Varieties which was held at the Salem High School Auditorium in order that all students and Salem residents might have the opportunity to attend. The main purpose in producing the Varsity Varieties was to obtain funds for the Campus Chest Drive being held on campus that week. In that week funds were raised and collected from the faculty and students to provide for all charity and benevolent funds throughout the year. In this way, funds for organizations such as the Red Cross Community Chest, and the Cancer Society are collected at the same time, thus avoiding the necessity of several drives. The money allotted to each organization was merely paid out by the Committee when their drive was taking place.



GLENN DUUS and BOB HILMER offer their special style of entertainment.



The Hungry Five add their own invaluable contribution to Varsity Varieties.



Beta's entertain their fathers at a banquet for Dad's Day.



Dads are registered as they begin their day's visit.



Students and their dads gather in the gymnasium.



Main feature of the day was the football game between the Bearcats and the Linfield College Wildcats.



BOB SKIRVIN, Dad's Day Manager, welcomes the fathers to Willamette.

the dad's day

program was newly inaugurated this year. It was originated to give fathers of the students the opportunity to visit the campus and observe at first hand the activities of their sons and daughters. Guests were taken on tours of the buildings and grounds of the University and attended receptions in their honor. The Dads were invited to luncheons at the respective living organizations of their son or daughter, and a banquet with special entertainment was presented in the evening to round out the day.



Member of the Court, **BARBARA REMELMEYER**,
and her escort, **BOB SMALL**.



MARILYN ENNS
Sweetheart of Sigma Chi



Member of the Court, **JOYCE FROST**,
and her escort, **JACK LARSEN**.

the sweetheart of sigma chi

selection is the big event of the year to the members of Sigma Chi. Long weeks of anxiety on the part of the contestants and careful selection by the Sigma Chi's were ended by the announcement of the Sweetheart at the annual ball held in her honor; then Marilyn Enns was escorted to the stage to the strains of "The Sweetheart of Sigma Chi" and presented with the trophy and a crown of white roses signifying the beginning of her year's reign.

Newly proclaimed Sweetheart of Sigma Chi, **MARILYN ENNS**, is presented with the Sweetheart Trophy by **DAVE BECKETT**.



Sweetheart **MARILYN** and her escort.



the concert series

was started this year for the purpose of bringing high-calibre performers to Salem and Willamette University. Outstanding artists such as Alec Templeton, Artur Rubinstein, and the De Paur Infantry Chorus, and a presentation of the opera "The Barber of Seville" have been brought to the Salem High School Auditorium for the enjoyment of the people of Salem and the students of the University. Intensive advertising by posters and in the daily newspapers brought gratifying responses. Students were particularly pleased to find that tickets to the performances were priced within the range of the pocketbook of college students.



HARLEY HOPPE
Manager of the Concert Series

The DePaur Infantry Chorus was one of the first of a series of outstanding performances.



The interpretations and improvisations of **ALEC TEMPLETON** were greatly appreciated by the audience.

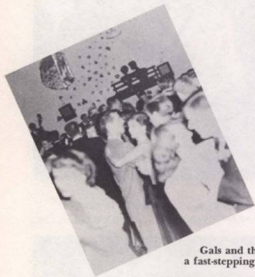


The appearance of **ARTUR RUBINSTEIN** in Salem was a high point in the series.





Couples pause for a bit of refreshment.



Gals and their dates enjoy a fast-stepping fox trot.

Making their way through the crowd, fellows guide their girls to the cloakroom.



the panhellenic dance

is the annual dance for which the four sororities join their efforts early in December. The theme for this year was "Autumn Nocturne" with a color scheme of predominantly fall shades. Dancing was to the music of the Charlie Nee Combo.

'Neath an autumn moon.





As students light candles, the chaperones discuss the evening's entertainment.



Conversing couples sit out a dance.

the inter-dorm formal,

"Frozen Fantasies," was held by the Women of Lausanne Hall early in December. Decorations created a dreamy atmosphere, and music provided by Wayne Meusey enhanced the enjoyable dancing of the students in a Christmas scene.



Silver and blue snowflakes give the feeling of coolness despite crowded dance floor.





Pi Phi's and their dates dance in "Nightmare Alley."



Alpha Chi's and guests enjoy a dreamy dance tune.



Delta Gamma's theme was "Grecian Glory."

house dances

are a favorite form of entertainment at Willamette, and they play a prominent part in the social life of the University. Tireless effort is exerted to make each dance a memorable occasion by carefully-planned decorative schemes, refreshments, and entertainment. Dancing to dreamy music in a romantic atmosphere gives students rest from the rigor of scholastic endeavor.



"The pause that refreshes" at the Alpha Chi dance.



Refreshments are served at the Bishop Manor dance.



JIM GARRETT, JEAN GILMER, WESLEY WOODARD, and BILL MERRIAM provide entertainment at the Chi Omega House dance.



GLENN LEUKENBEAL and JILL LARSON had a secret desire to go fishing.



Delta Gamma's and their escorts take a short rest between dances.



CHARLIE NEE's Combo provided music for many of the house dances this year.



Pi Beta Phi "Beau and Arrow" spring formal.



CARL BLANES and PATSY OLDER dazzled audiences with their elaborate costumes.

SUE MELLOR, KENT LAWRENCE, and BOB KAPLAN in a scene from the play.



PATSY OLDER and BOB KAPLAN took the leading roles as Queen Hermione and King Leontes.

CHUCK HARRIS offers comic relief as the shepherd.



"the winter's tale"

by William Shakespeare was the first major production of the year by the Willamette University Players. It was presented December 7, 8, 9, at the Parrish Junior High School Auditorium. The momentous undertaking of preparing the acting version of the play was skillfully handled by Professor Ruane B. Hill of the Department of Speech and Drama. Acting and staging and the beautiful costumes were particularly appreciated by the audience.

Queen Hermione pleads her innocence before the assembled court.





THOMAS a BECKETT (Dr. Hocking) and the tempters.



Death scene in the Cathedral.



An unusual feature of the play was the chorus of six girls.



THOMAS a BECKETT discusses his dilemma.

"murder in the cathedral"

by T. S. Eliot was the play produced in conjunction with Religious Emphasis Week. The production, written after the style of the Greek theatre and featuring a speaking chorus, was a new experience to many students, and everyone found it intellectually stimulating. Particularly remarkable to many of the observers was the fine effect achieved by the lighting.



DR. GEORGE HOCKING as the Archbishop of Canterbury.



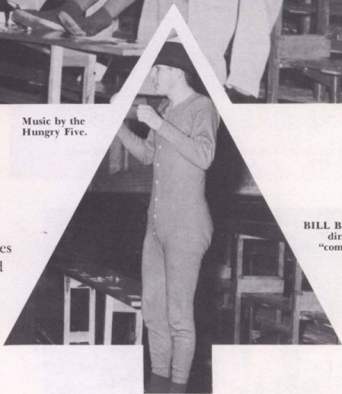
BETTY BREAKY and BOB BAIN take time out to admire the decorations.



Music by the Hungry Five.

christmas

was heralded at Willamette by a series of parties that were climaxed by the Senior sponsored student body Christmas Party. Students gathered in the gymnasium to dance and celebrate the advent of a three-week vacation period.

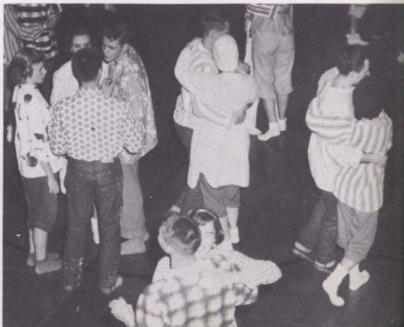


BILL BISSELL directs the "community sing."

Santa Claus distributed some special gifts.



The Christmas Party featured loud pajama tops, jeans, and dancing in stocking feet.



Chi Omega's decorate their tree before the big party.



Pi Phi's and their dates make the decorations and decorate the tree at their party.

Parties at different living organizations took divergent themes, but the prevailing spirit of Christmas pervaded all, as students put forth their efforts to make the Christmas season at Willamette a big success. Activities centered on the decorations of houses and trees, and then the distribution of gifts.

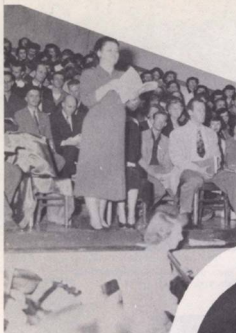
Alpha Chi's add the last bit of tinsel before the little girl's from the Blind School arrive.



Putting final touches on the tree at the Delta Gamma house.

Pi Phi's and Phi Delt's enjoyed a post-caroling fireside.





CLORINDA TOPPING
Soloist

the messiah

presentation at the Salem High School Auditorium found many Willamette students participating. Presented by the Salem Oratorio Society, it was directed by Dean Melvin H. Geist and accompanied by the University orchestra.



Dean MELVIN H. GEIST
Director



Members of the chorus work over a difficult passage.



The chorus takes a brief rest while the orchestra is being rehearsed.



Everyone listens intently to the last-minute instructions.



The Wesley Fellowship was the first group to go caroling.

christmas caroling

is one of the first signs of the approach of the Christmas season at Willamette. With the object of bringing the Christmas spirit to the old people's homes about Salem, students bundled themselves in their warmest clothes, loosened up their vocal chords, and set out on a round of Christmas caroling.



Sigma Chi's rest a while as the Alpha Chi's sing a chorus alone.



Lausanne girls and Baxter men gather at a home to sing their carols.

Carolers walk to the next home to be serenaded.



Juniors gather at the fire place to talk things over.

class parties

were planned and held early in the year. When the various classes get together for individual and joint parties, anything can happen, and usually does. Themes this year leaned toward informality. The Senior Class party was held at the Legion Hall in West Salem. Garlic salad served with the spaghetti gave the party-goers something in common as they danced after the dinner.



Above:
Serious talk at the Senior party.

Below:
Seniors line up for piling plates of spaghetti and garlic salad.



Also held at the Legion Hall in West Salem was the Junior Class party. Members of the class spent a pleasant evening dancing and chatting. The Freshman and Sophomore Classes held a joint barn dance at Isaac Walton Hall. Plaid shirts and jeans were the proper attire for the evening as members of the classes joined in spirited square dances. The parties served to get the classes together again and to increase feelings of class loyalty and cooperation so necessary for the presentation of the songs and formations at Freshman Glee.



Above:
Juniors enjoy coffee and donuts.

Below:
Freshmen and Sophomores try dancing
to a slow number.



Freshmen and Sophomores enjoy high-class
entertainment between dances.



Frosh and Sophs swing out
for a real square dance.



Left:
Center Doug Logue takes the rebound
as the Linfield team looks on.

championship basketball

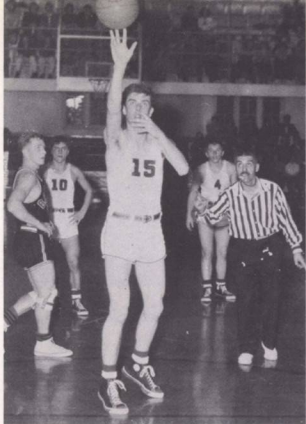
means action. These pages record the actions of the fine Willamette team on the playing court. The Bearcat's ability to shoot, grab rebounds, and guard aggressively is clearly shown by these pictures.



"Terrible Ted" Loder adds his bucket
to the evening's effort.



Bearcat backboard power was largely due
to the work of Ted Loder and Doug Logue.

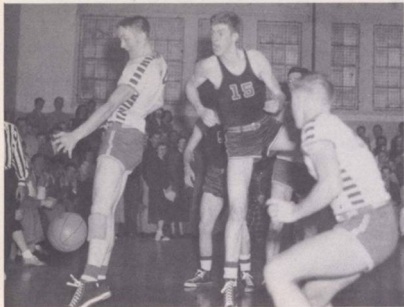


"Just one," says Referee Piluso as Scrivins and Benshoof give approval.

The Badger center outreaches Larry Smith for the rebound.

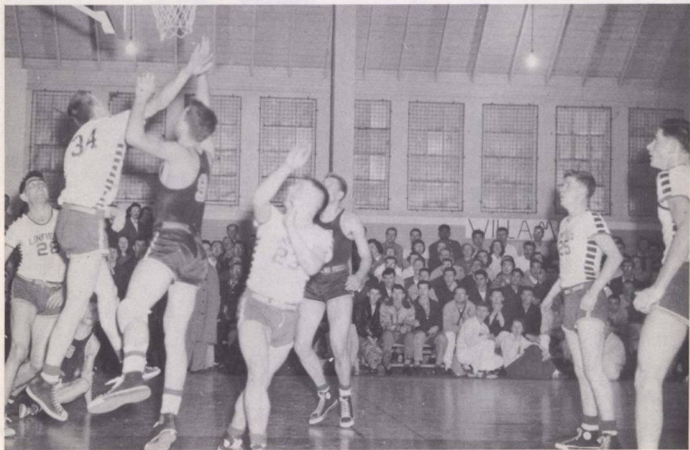


Two against one as the Linfield team fights hard on its home court.



It's Logue in the highland fling as a little humor is added to the tense championship game with Linfield.

LARRY SMITH adds two points as a Linfield player vainly attempts to block the shot.



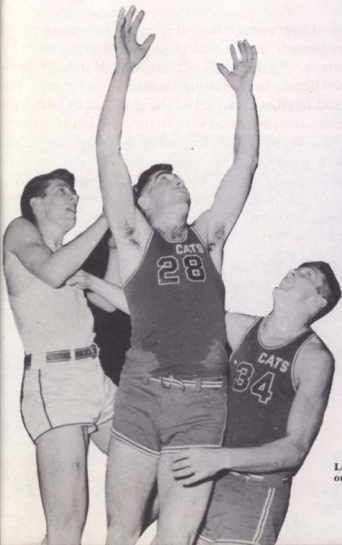


DOUG LOGUE and LARRY SMITH go way up this time as they fight for the ever-precious ball.

Scrivens, Logue, and Loder are caught flat-footed on this rebound.



Loder gets his fingers on the ball as Larry Smith and a Wildcat move in.



Loder goes up as a 'Cat is forced out of playing position.



The Freshman Class wins with singing of "Campus Capers."

the forty-third annual freshman glee

brought a new round of unceasing rehearsal of songs and marching by the four classes as they prepare for the presentation of the grand tradition of Willamette University. As the night of Saturday, March 10, drew near, each class was vociferous in expressing confidence in victory. The audience of friends and families that packed the gymnasium found the atmosphere of tense excitement contagious as they anxiously awaited the entrance of the Juniors that would announce the beginning of the big show of 1951. The Seniors surprised lower classmen and the audience by turning their chairs around to face the other classes and started the singing of a spirited chain of parodies from class to class. A few minutes later the actual presentations were begun, and Freshman Glee was really underway for the forty-third time.

The Freshman Class triumphantly displays the Glee Banner.



Seniors make a solemn entrance in caps and gowns.



Professor Clark goes into the stalling ritual before announcing winners.

Freshmen make a mad dash for the stage as they are proclaimed the winners.

Songs were presented against a backdrop of pictures in keeping with the Novelty theme — comical depictions of Papa Waller, the Zulu Maid, and the Cannibal King.

Senior presentation of "So You're Coming to Willamette" places second.





The Sophomore presentation of "Bearcat Fling" won them the trip into the Mill Stream.



Once again the Juniors placed third with "Jason Lee Blues."

Everyone wants to get his hands on that hard-won banner.



The hard-working committees behind the scenes are largely responsible for the success of Freshman Glee. The Glee Committee appointed by the Student Council served in an advisory capacity to the Freshmen who were in charge of the program.



Glee Manager, Harold Silke.

Executive Committee: Gay Weeks, Cal Cooper, Earl Atkinson, Larry Pritchett, Jim Bergman, Jane Notson, Alice Girod, Betty Howat, and Marlene White.



Glee Committee: Duane Denny, MaryJane Stewart, Dick Mercer, Donna Stoddard, and Bob Skirvin.



Freshman Class Committee: Paul Baker, Bill Jessup, Jim Hitchman, Edna Hill, Carol Emerson, Jim Bergman, and Don Morrison.



The Sophomore Class gets into formation for the presentation of their song.

It isn't every day that one gets a shave in the bird bath—with music.



blue monday

is the day for paying off bets made in the surge of confidence that precedes Glee. Victorious Freshmen wandered about the campus observing the strange antics of upper-classmen. Men of the losing Sophomore Class made the traditional trip into the Mill Stream as punishment for their last place performance as rated by the judges. A special Chapel for the occasion was presented by the losers with the usual parody of the winning song.



Drive-in service on the steps of Eaton Hall.

The latest things in campus attire.



Sure, and it's a great day for the Irish!



Individual bets took unusual forms as Seniors, Juniors, and Sophomores appeared on campus in outlandish attire and submitted to such ordeals as having their hair dyed green, purple or red, eating worms, egg shampoos, and receiving a liberal coating of syrup and feathers.



Sophomores line up for a "triumphant" march into Chapel.

Right:
A lovely day for wading? Sophomores seem willing to give it a try.

Caught in the act!



QUEEN MARY CAMPBELL



PRINCESS JOYCE FROST



PRINCESS LAVAUGHN SLEEPER

DAVE LONGTIN gives out with some mellow tunes.

Couples take time out to enjoy the atmosphere of a formal garden.





The Court's escorts: Jack Gunn, Phil Ringle, Babe Maudlin, Dick Endsley, Cliff Gregg.



The Petzholdt brothers and their dates, Delores Gustafson and Donna Phelps.



PRINCESS JOAN LANKE

the varsity ball

was presented by the "W" Club in the University Gymnasium, Saturday, April 7. Students danced to the music of Dave Longtin and his band, and, naturally, wondered which of five lovely girls selected by the lettermen would be chosen to reign as Queen of the Varsity Ball. One by one the Princesses of the Court were escorted to the bandstand and finally Mary Campbell was brought forward to be crowned Queen of the Varsity Ball for 1951.

PRINCESS CAROLYN CRANE



Last year's Varsity Ball Queen, Shirley Griffin, crowns Queen Mary.





Left: MARK COTTON and WALLY BOE pass the batons in early season practice.



willamette relays

A new track era was inaugurated at Willamette University this year on April 7th as the Willamette Relays became a school tradition. Under the guidance of track authority Chester Stackhouse, some 750 high school and college athletes competed on the McCulloch oval for top honors. Under perfect weather, the events were run off with clock-like precision.

While the University of Oregon dominated the college division, Ted Mertz and Jim Hitchman copped top honors in the hurdles and shot put respectively.

The success of the event has assured the continuation of early season competition to the advantage of the prep and college track men in Oregon.

Below: JIM HITCHMAN and BILL VAN HORN stretch for speed in the 220.





Above: MERTZ and STANDIFER clear the sticks ahead of Linfield's SCHIEWE.

dual meet results

Willamette 77	Lewis and Clark . 54
Willamette 98	Pacific 27
Willamette 105	Linfield 21
Willamette 74	Whitman 56

Below: BUD WHITE wins the conference 100-yard dash crown for the third consecutive year as TED MERTZ hurries him along.



LARRY SMITH

Right: The Whitman relay team moves out ahead in the last race of the meet.



The barbecue on Friday afternoon marked the official opening of the May Weekend celebration with barbecued beef, cole slaw, and entertainment by campus talent.

may weekend

was unofficially inaugurated on Thursday night, May 3, as all classes participated in the all-night barbecue fire watch—each class having an hour watch. The celebration really got underway on Friday with the barbecue, a baseball game with Oregon State, and the grease-pole climb and tug-of-war competition between the men of the Freshman and Sophomore classes. The May Weekend play, "School for Scandal," presented at Parrish Junior High School was attended by a large crowd and marked the successful completion of the first day of May Weekend.

Seniors shoulder their share of the burden of the all-night barbecue fire watch.



JODIE JOHANNABER presents her own inimitable interpretation of "You're Breaking My Heart."



Barbecue entertainment included an adaptation of "Barefoot Boy with Cheek."





Left:
PATSY OLDER and **BOB WITHAM**
 in a scene from "School for Scandal."



Right:
DARRELL de CHABY took the
 leading role as Sir Peter Teazle,
 and Marion Sparks played
 Lady Teazle.

JACK LARSON, BOB WITHAM, and GAROLD MEINKE
 display eighteenth century costumes for the comedy, "The
 School for Scandal" by Richard Brinsley Sheridan.



The Sophomores repay old debts as they tumble the Freshmen
 into the Mill Stream during the Tug of War.

By preventing the Freshmen from
 climbing the greased pole, the
 Sophomores succeeded in walking
 off with the athletic laurels
 of the day.





QUEEN ALICE ADAMS,
member of Chi Omega
and a music major
from Portland.

PRINCESS LuDENE HARGRAVE
a member of Pi Beta Phi and a
literature major from Portland.



PRINCESS NICKIE HAYNES
a member of Pi Beta Phi and a
drama major from Berkeley,
California.



QUEEN ALICE enters the gymnasium for the conoration escorted by EARL FEDJE.



A new feature of May Weekend was a parade through the down-town shopping district.



Last year's Queen, POLLY POLLOCK FEDJE, graciously crowned Queen ALICE I before an approving court.



Below left: The May Pole was wound intricately and faultlessly by the women of the Junior Class.

The All-Campus Sing was held Saturday morning, and in the afternoon was the coronation ceremony for Queen Alice Adams. The ceremonies included, besides the coronation, a performance by the orchestra and piano soloist, Professor Ralph Dobbs, the Maypole Dance, and presentation of awards to winners of the All-Campus Sing.

Below right: Sophomore women form the daisy chain for the passage of the Queen and her court.





QUEEN ALICE and her court at the coronation.



Right: Alpha Chi Omega won first place in the women's division of the song contest with their presentation of "Blue Moon" and "Alpha Chi Dreams."



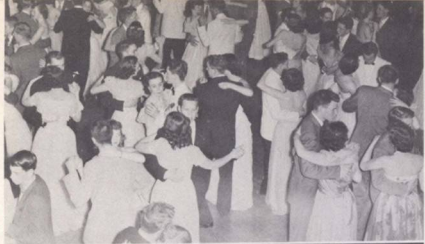
Right: The rendition by Beta Theta Pi of "The Beta Chorus" and "You'll Never Walk Alone" received the first-place award in the men's division of the song contest.

BEVERLY GUSTAFSON Alpha Chi song leader, smiles happily as she accepts the song cup from Queen Alice.



PRINCESS LuDENE, QUEEN ALICE, MRS. SMITH, and CLARIBELLE EASTON at the Queen's Tea held at University House.





Left: Climaxing the May Weekend activities was the formal dance in honor of the Queen Saturday night.



Below: QUEEN ALICE and her escort, EARL FEDJE, make their entrance at the dance with a fanfare of trumpets.



Song leader of the Beta's, ART DIMOND, is presented with the song cup by QUEEN ALICE.

PRINCESS NICKIE, QUEEN ALICE and PRINCESS LUDENE in the "royal car" at the parade.

The car with members of the cast of "The School for Scandal" is escorted by the Pep Cats.





**living
organizations**



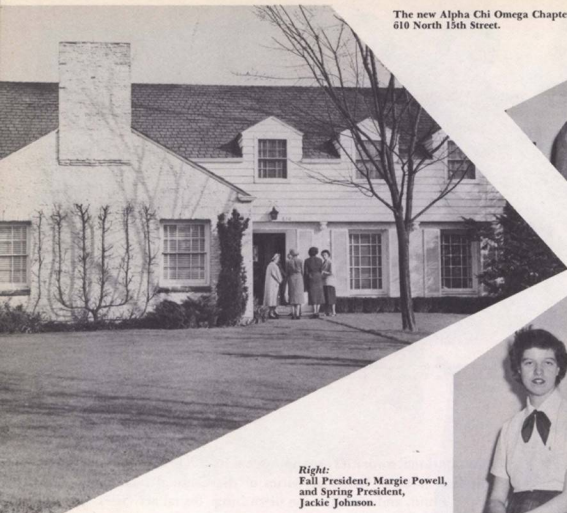
Representatives to Panhellenic from left to right, standing: Patsy Older, Joan Carlson, Margy Powell, Wesley Woodard, Diane Proctor. Seated: Jeanette Gilbertson, Jean Gilmer, and advisor Dean Ewalt.

panhellenic council

composed of representatives from the four national sororities on campus, has its chief function in maintaining good relations between the four houses. Other activities of the Council include selling Easter Lilies for the Cerebral Palsy Fund, and coordination of rushing. Social activities of the year were the Panhellenic Formal in December, the Panhellenic Picnic in May and several exchange dinners among the sorority groups. Junior Panhellenic is for pledges and newly initiated members who assist in the activities of the Senior Panhellenic Council.

Representatives to Jr. Panhellenic from left to right, standing: Charleen Asvik, Marilyn Quamme, Janet Munson, Pat Palmer. Seated: Betty Jean Mullin, Edna Marie Hill, Pearl Young, and Barbara Remelmeyer.





Mrs. Mendenhall
always has time for
a friendly smile.

Right:
Fall President, Margie Powell,
and Spring President,
Jackie Johnson.



Right middle:
Awaiting the outcome of
an important phone call.



alpha chi omega

reached a long-time goal with the purchase of a new house at 610 North Fifteenth Street. A record number of girls returned in the fall, and the old house at 299 North Winter was filled to capacity and bulged at the seams. But such minor factors as lack of closet space did not deter the Alpha Chi's from having a memorable year. Excited by plans for moving, the girls spent a busy year of extra-curricular, scholastic, and social activities. Firesides, teas, and visits from national officers kept members and pledges on their toes, but they managed to find enough study time to re-claim the Scholarship Cup for the fourth consecutive time.



Alpha Chi's enjoy an evening of
music and conversation.

SENIORS

A. Avriette
 E. L. Hall
 F. Goodridge
 L. Gottwald
 E. Loveless
 M. Lumijarvi
 G. Nandri



M. Powell
 E. Reynolds
 E. Vosper
JUNIORS
 T. Bennett
 P. Botkin
 J. A. Enyeart
 B. Gustafson



M. Howe
 J. Johnson
 B. Langley
 D. Speilbrink
 J. A. Vincent
 A. Wilhelm
SOPHOMORES
 A. Bailey



H. Booth
 M. Corner
 J. Crakes
 D. Detlofsen
 D. Ewen
 J. Foshee
 D. Gustafson



J. Kirby
 J. Kyle
 N. Lawson
 N. Lumijarvi
 M. MacLauchlan
 E. Martin
 J. Motschenbacher



L. Newton
 M. E. Phillips
 J. Pinkerton
 M. L. Ratcliff
 J. Stewart
FRESHMEN
 L. Brooke
 D. Cheldelin



C. Emerson
 N. Erickson
 B. Howat
 L. Todd
PLEDGES
 G. Asvik
 V. Benner
 H. Bennett

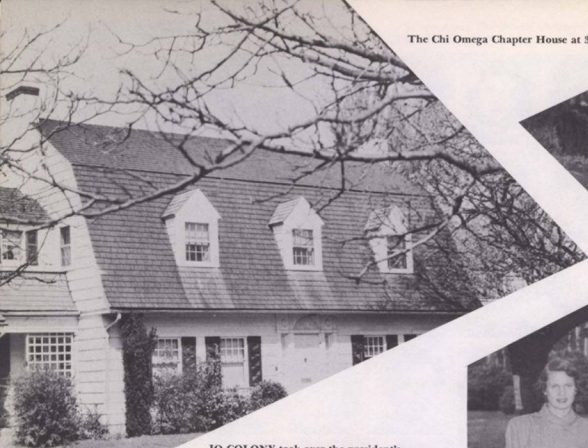


M. Dietz
 M. Enns
 J. Foster
 L. Gragg
 G. Kainu
 M. Leonard
 M. Merz



B. J. Mullin
 B. Royer
SENIOR MEMBER
 J. Chute





Mrs. WASHBURN in her capacity as housemother is always a willing and helpful advisor.

JO COLONY took over the president's office in the spring after WESLEY WOODARD had served in that capacity in the fall.

Right below: The Chi Omega's enjoy their moments of relaxation.

chi omega

began a year packed full of social and campus activities and studying with a tea honoring their new housemother. Early in December their fall house dance, a colorful costume affair with the intriguing theme "Melody Madness," was held. An "Owl Hoot," an informal get-together of members and pledges, was also held at which all participated in the singing of house songs, the presenting of short skits and other entertainment during an evening of fun and relaxation. Prior to a much-welcomed spring vacation, the members and pledges presented the annual "White Carnation Ball" in honor of the graduating seniors, and, finally, climaxing Chi Omega's eventful spring semester, Alice Adams was chosen May Queen to reign over Willamette's May Weekend festivities.



A little quiet talk before settling down to the stern call of studies.

SENIORS
 A. Adams
 J. duBuy
 B. A. Garrett



J. Gilmer
 H. L. Miller
 N. Smedley
 E. Taylor
 W. Woodard



P. Zahare
JUNIORS
 M. Aldinger
 B. Brooks
 J. Colony
 A. Deskins



C. Easton
 B. L. Eby
 P. Young
SOPHOMORES
 M. Conklin
 L. Eatinger



D. Enlehart
 D. Fisher
 J. Fisher
 A. Koch
 D. Koutney



D. McCulloch
 J. A. Mintonye
 R. Price
 A. Stackhouse
 J. Taylor

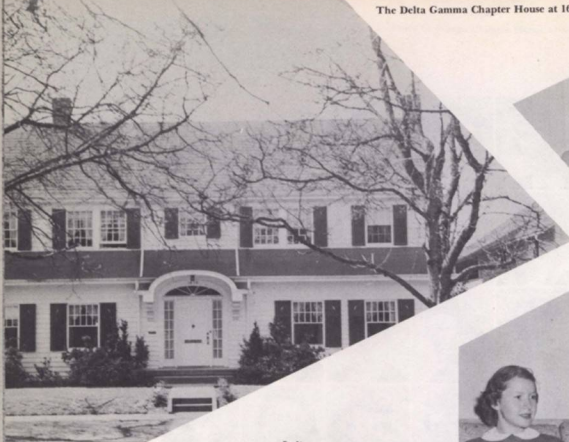


FRESHMEN
 J. Crouch
 C. McCleod
 S. Swaboda
PLEDGES
SOPHOMORES
 T. Klepp
FRESHMEN
 S. Hare



M. Hunter
 M. MacKay
 J. Munson
 S. Nieswander
 F. Palmer





MRS. MARQUAM devotes her time and energy to the D.G.'s as their housemother.

Left: PATSY OLDER was President in the spring after JOAN KLINDWORTH CARLSON had been House President in the Fall Semester.

Left below: Delta Gamma's use cooperative plan for washing dishes.



delta gamma

has found that the spirit of friendship and cooperation inspired by fraternity can find expression in a wide variety of campus activities this year. Homecoming found them re-establishing their reputation as the "noisiest gals on campus" by winning the Noise Parade trophy for the second time. On Hallowe'en night, they serenaded the mens' living organizations with original songs written especially for the occasion. Other fall activities included their formal house dance "Grecian Glory," their annual Christmas party for the Blind School children, and entertaining our dads during the Dad's Day weekend. The theme of our spring house dance was "D. G. Hayday" with couples going on a hay ride before the dance.



SENIORS

S. Ambler
J. Carlson
P. J. Hammond
J. Holbeck
F. Lenz
N. Phillips
M. Sparks

**JUNIORS**

J. Gossett
B. Herstrom
D. Caley
A. Leslie
D. McCain
S. Ozle
P. Older



J. Rice
J. Shepherd
P. Stanton
D. Stoddard
A. Swanson
E. Wilhoit
SOPHOMORES
W. Aller



C. Banta
L. Case
V. Deardorff
J. Edcell
P. Faber
P. Farnes
J. Gladden



S. Hutchison
A. Kinsdworth
C. McCord
S. McElhinny
N. Marks
S. Moffitt
B. Moody



M. Ozle
B. Osborne
D. Palmer
M. J. Phillips
J. Robinson
S. Shipley
M. Vincent

**FRESHMEN**

B. Breakley
J. Beckham
D. Miller
S. Phillips
M. Polales
B. Walser
FLEDGES
SOPHOMORES
H. Aller

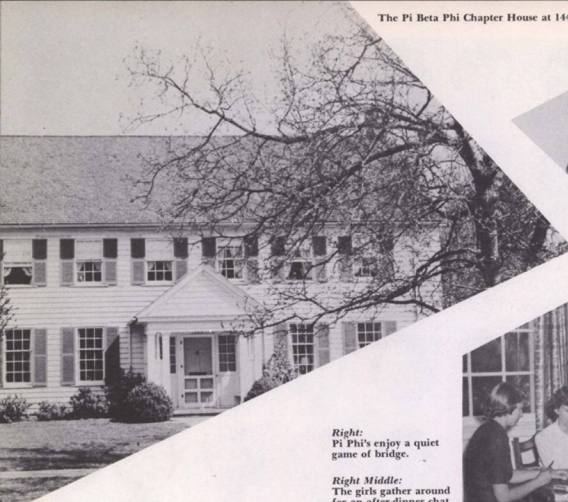


A. Durbin
M. Ousamme
E. Wheeler
M. Dawson
B. Foster
N. Gore
S. Hastings



J. A. Hirtzel
E. M. Hill
D. Maddox
N. Pratt
M. White
FOREIGN GUEST
G. Krzyzkowska





Mrs. Chapler serves as mother and friendly advisor.

Right:
Pi Phi's enjoy a quiet game of bridge.



Right Middle:
The girls gather around for an after-dinner chat.

pi beta phi

got off to a good start this year by giving a tea in honor of their new house mother, Mrs. Marguerite Chapler. The Pi Phi's had worked hard all summer re-decorating the Chapter House, and the tea also gave them the opportunity to show the results of their work to campus friends. The fall dance carried out the unusual theme of "Nightmare Alley" - with the couples entering the house through the alley. The annual Valentine Formal was also a big success. The wearers of the arrow were proud to be represented on several of this year's beauty courts. Two girls were chosen for the Sigma Chi Sweetheart Court. A Pi Phi was the Varsity Queen, and her court included three Pi Phi Princesses. Two members were also chosen as the May Weekend Princesses.



SENIORS

D. Adams
N. Adams
D. Banz
M. Beard
M. Guice
L. Hargrave
R. Haynes
J. Johannaber

J. Kell
H. Oakes
D. Proctor
J. Stark
M. J. Wigginton
JUNIORS
A. Bliss
J. A. Estey
J. Gibberson

L. Johannaber
P. Jones
M. L. Lee
S. Mellor
J. Oliver
B. J. Simpson
C. Snarr
SOPHOMORES
B. Baker

G. Connell
P. Edwards
S. Griffin
M. Harris
S. Helwig
V. Larson
A. Lillis
M. McDermott

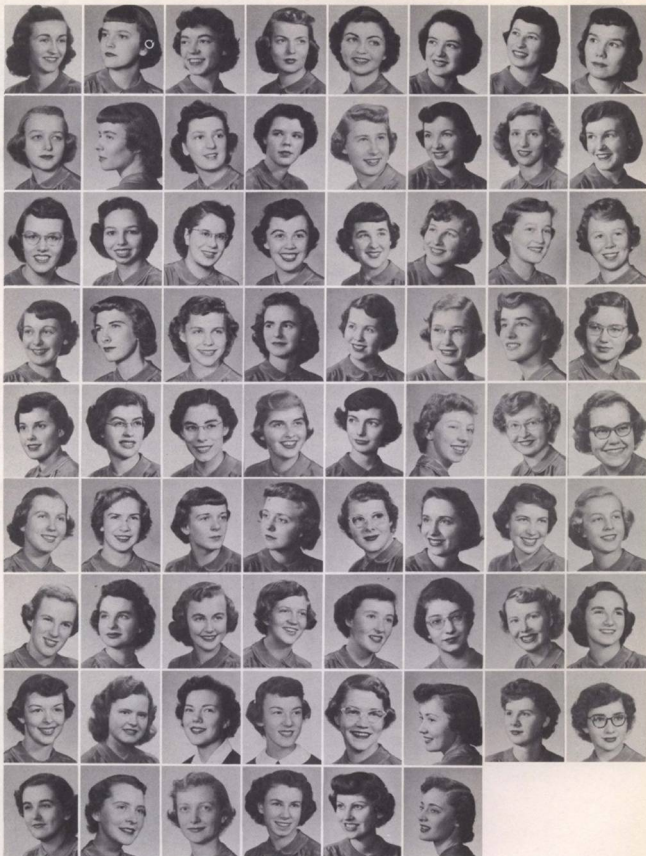
D. Mears
E. Morley
C. Person
B. Rands
J. Richardson
J. Robertson
J. Rogers
M. Smith

G. Spencer
B. Weber
FRESHMEN
J. Connell
C. Crane
N. Doughton
J. Elliott
J. Frost
A. Gibbens

F. Graham
J. Gray
R. Hallin
J. Horn
M. Ingraham
L. Meisenger
J. Naton
PLEDGES
SOPHOMORES
E. Oakes

FRESHMEN
C. Arpke
C. Averill
S. Bridgeman
M. Campbell
A. Groot
M. L. Johnson
R. Lancaster
J. Lanke

L. Lauber
M. Marshall
I. Randolph
J. Rankin
B. Remelmeyer
F. Smith





Sometimes the Lausanne girls like to gather in the lounge for casual conversation and reading magazines.

CAROLYN BIEDERMAN was President of Lausanne Hall.



Mrs. WATTS has been Lausanne housemother during the Spring Semester.

lausanne hall

initiates Willamette co-eds into college activities by sharing the fun and responsibilities of dorm life. This year over 120 girls guided by Carolyn Biederman, president, successfully sponsored firesides with other living organizations, dances, teas, Open House, and took part in various campus contests. The Hall is equipped with modern facilities to provide a congenial home-like atmosphere for the residents. The girls have access to an attractive three-room parlor and to a recreation room where they may entertain guests or hold informal parties.

Lausanne Hall at 265 South Winter Street.



SENIORS

C. Biederman
S. Coogeshall
B. Gertson
M. A. Hall
E. Jernstedt
J. Mountcastle
R. Patterson

**JUNIORS**

E. Reeber
D. Beachler
L. Keelsba
B. Kostenbader
A. Miller
K. Revis

**SOPHOMORES**

E. Belliger

FRESHMEN

S. Clifford
M. Davis
C. Kenyon
D. Kirtland
J. Langworthy
P. Pomeroy
P. Rogers

**FRESHMEN**

T. Walker
L. Abell
J. Allen
M. Armstrong
C. Bnal
C. Cannon

**FRESHMEN**

M. Carroll
S. Cheavens
M. Cone
L. Conner
N. Cox
N. Crane

**FRESHMEN**

J. Currie
M. English
B. Green
Y. Grinnell
J. Haight
A. Jackson
D. Jenkins

**FRESHMEN**

J. A. Jones
E. King
A. Klang
G. McCormick
W. Makinson
A. Mellis
S. Moore

**FRESHMEN**

D. Newson
G. Nichols
A. Osborn
M. Politte
A. Porter
P. Pruner
B. A. Roeder

**FRESHMEN**

L. V. Sleeper
E. Staveland
M. J. Stewart
P. Turner
G. Wildey





The Baxter men puzzle over the next move in an after-dinner card game.

CARL BLANES and DON BRAND filled the executive positions at Baxter Hall.



Mrs. JOHNSON was housemother at Baxter Hall this year.

baxter hall

is the residence of a homogeneous living group composed of independent men and fraternity pledges, 100 all told. As an independent organization, the Associated Men of Baxter Hall fielded teams in all intramural athletics. Two house dances and a spring open house—plus a full schedule of fire-sides with the women's living groups—filled their social calendar. Life at Baxter includes eating—family style a la waiter, sleeping—usually at night, and studying. Bull-sessions form an integral part of their "search for knowledge," whether they be around the card table, in the showers, or in front of the fire-place.

A full-front view of Baxter Hall on the Willamette University campus.



SENIORS

L. Aldrich
S. Aschenbrenner
D. Brand
R. Charvase
C. Fisher
J. Ksemmer
J. Lacey

**E. Nosaka**

D. Reynolds
W. Stauffer
P. Stoehr
G. Wagner
JUNIORS
C. Blanes
D. Boudon

**P. Dally**

G. Davies
P. Gallo
E. Gordon
C. Johnson
B. Kaplan
D. Logue

**R. Mittelsdorf**

P. Paddock
H. Payne
J. Wilcox
F. Winship
SOPHOMORES
T. Acheson
R. Asher

**R. Borquist**

B. Collier
R. Gaw
G. Kelly
S. Kwan
S. Nicks
D. Parton

**D. Perlman**

W. Richartz
G. Ruff
W. Ward
FRESHMEN
R. Batschelder
E. Blakney
Bud Clarno

**C. Cooper**

T. Daigle
A. Deal
R. Geer
E. Griffiths
F. Lehman
P. Morse

**J. Moyer**

S. Shaw
J. Stoaks
R. Stewart
C. Todd
K. Watkins
R. Wheeler

**R. Willcutt**



Mrs. WATTS plays the piano, and the men of Bishop gather around to sing a few choruses.

bishop manor

from women they inherited it and to women they return it for next year, the Men of Bishop Manor—18 of them—inhabited this ancient Salem landmark, 1890 style, most of this year to alleviate the crowded conditions at Baxter. Small though they were in numbers, intramural athletic teams competed in football and basketball, giving all pigskin opponents a run for their money until “the Bishop Boys” were squeezed out in the playoffs. A Hallowe’en Dance and a few shared firesides with Baxter composed their social functions, though “stepping out for a hot chocolate” seemed a more popular activity.

Bishop Manor at 765 Court Street.



E. Allen
S. Cramer
E. Heiser
S. Nelson
J. Scott

R. Anderson
J. Harder
D. Miller
J. Peterson
P. Shaw

D. Clark
C. Harris
N. Moodhe
D. Poindexter
G. Timms



Mrs. WATTS was Bishop housemother until the Manor closed at the end of the Fall Semester.



An early spring dance was sponsored by Inter-Fraternity Council.

inter-fraternity council

has its main function in discussing problems among the fraternity groups with the purpose reaching a satisfactory solution for all those concerned. The Council is composed of representatives from each of the four fraternities who meet with their advisor, the Dean of Students, whenever necessary. The group also sponsors an annual dance. The dance this year was semi-formal.

Representatives to the Inter-Fraternity Council,
GENE PEYTON, JIM GARRETT, ROD BEALS,
DICK BOLTON, DOUG NICOLL, and RALPH BOLLIGER.

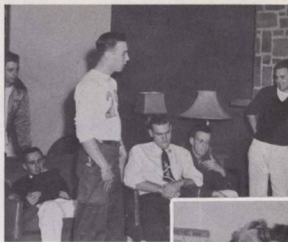


DEAN MARK
HATFIELD is
advisor to the
group.



beta theta pi

got off to a roaring start in the fall by winning the Homecoming Sign Contest and placing second in the Noise Parade. Even a month of social probation didn't dampen their spirits as they continued in high gear throughout the year by taking first place in the men's division of the All-Campus Sing, placing well up in intramural athletics, and receiving for the fourth consecutive year the scholarship trophy. The annual Spring Dinner Dance was the high light of the social program. The beach trip late in the year provided the last social event and an opportunity for relaxation and fun before finals.



Beta's enter into a spirited gab session before dinner.



Beta housemother, Mrs. PROCTOR, enjoys her position as advisor to the boys.

A typical college-life scene—the ever-lasting bridge game.



The Beta Theta Pi wing at the northwest corner of Baxter Hall.



DICK ENDSLEY, Fall President, and ROD BEALS, Spring Semester President.

SENIORS

G. Adams
H. Carlson
D. Carpenter
J. Carpenter
M. Edwards
R. Endsley
E. Fedje



A. Goudy
J. Gunn
W. Hedson
W. Ishikawa
E. Killifer
C. Martin
T. Mertz



G. Oliver
K. Schmidt
W. Peyton
D. Stearns
R. Wiper
N. Younglove
JUNIOBS
R. Beals



F. Calkins
R. Cole
L. Corner
P. Hammonnd
H. Hoppe
J. Larson
T. Loder



G. Matile
D. Nicoll
R. Seamster
E. Walters
SOPHOMORES
J. Armonson
J. Ambler
R. Bain



R. Bolliger
D. Denay
J. Falkenhagen
C. Gregg
J. Jackson
P. Jewell
Keith Lawrence



Kent Lawrence
L. Sawyer
FRESHMEN
D. Bennett
J. Bergman
D. Drake
L. Gilsen
J. Hitchman



D. Morrison
H. Silke
R. Stephenson
E. Von Eschen
A. Wilson
PLEDGES
SOPHOMORES
G. Keppinger
FRESHMEN
C. Beairato



D. Brown
M. Campbell
M. Helmsaetel
C. Mickle
R. Petzoldt
L. Standifer



Song practice can be enjoyable, too,
as Phi Delt's work over the harmony.

phi delta theta,

by participating in intramural athletics, dramatics, social functions, and many other campus activities, and by placing an increasing emphasis on studies, kept its members extremely busy during the school year 1950-51. Top social events for the Phi Delt's included the masquerade, "Surrealistic Scampers," in the fall, and the elaborately decorated spring formal, "Plantation Paradise." In December the Phi's demonstrated their Christmas spirit with a party for some forty underprivileged boys from Marion County. By winning Intramural Bowling, and pressing for both A and B softball leads, the House was well represented in Intramural sports. The completion of the new basement rumpus room was the achievement for which the Phi's are particularly proud this year.



MRS. DYER has proved to be a real mother to the Phi Delt's.

Time out for re-telling the latest stories.



The Phi Delta Theta wing on the northeast corner of Baxter Hall.



JEFF MacDOUGALL handed over the presidential gavel to JIM GARRETT at the end of the Fall Semester.

SENIORS
 J. MacDougall
 D. Phillips
 R. Skirvin
 R. Taylor
 S. Thomson
JUNIORS
 W. Bissell



D. Card
 M. Colton
 J. Garrett
 J. Gay
 M. Glenn
 C. Gillhan



C. Gutzler
 R. Hearn
 J. Jackson
 J. Miller
 P. Niewwander
 L. Prediletto



R. Schaefer
 H. Summers
 R. Unruh
 J. Weiser
SOPHOMORES
 G. Buland
 R. Cocking



R. Cocking
 G. Collins
 D. Crossler
 G. Duss
 R. Hilmer
 N. Lawson



G. Meinke
 J. Piper
 L. Ranton
 B. Sittser
 L. Smith
FRESHMEN
 E. Atkinson



D. Forester
 K. Hammer
 F. Lincoln
 W. Jessup
 L. Peterson
 G. Rolfsness



D. Upton
 N. Wiseman
PLEDGES
 N. Battalga
 D. Empey
 R. Isak
 G. Lokas



E. Ohlund
 D. Shields
 R. Wilkins



An evening of cards and music is customary at the S.A.E. wing.

sigma alpha epsilon

initiated the school year of 1950-51 with the Homecoming weekend and all its festivities. Top social events of the year were the fall formal, "Winter Fantasy," and the spring formal, "Desert Splendor." The men of S.A.E. have been very active in Intramural athletics this school year. By the end of the current season S.A.E. should prove to be a strong contender in Intramural sports and well up at the top. The Fall and Spring Semester's initiation classes slightly increased their numbers over previous years. Work was started this year on a basement rumpus room, and hopes are high that it will be completed in time for the opening of the Fall Semester in 1951.

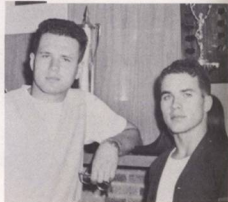


MRS. HIGBEE serves as housemother and hostess for the S.A.E.'s.

The S.A.E.'s proudly examine their Ski Trophy.



The Sigma Alpha Epsilon wing on the southeast corner of Baxter Hall.



GENE PEYTON was President this year. BOB SHANGLE was last year's President.

SENIORS
 C. Bowe
 L. Cramer
 O. Davies
 B. DeBord
 A. Miles
 G. Peyton
 P. Phipps



R. Robins
 W. Stanton
 R. Suttich
 R. White
JUNIORS
 B. Boatman
 E. Caley
 J. Coen



J. Ellis
 C. Girod
 G. Kerr
 W. MacDougall
 R. Myers
 C. Nordhill
 R. Shangle



SOPHOMORES
 D. Beery
 B. Covert
 D. Dougherty
 E. Davall
 T. Edwards
 J. Formick
 J. Freeman



J. Grabow
 D. Gunther
 W. Hess
 J. McHale
 W. Mulkey
 H. Nelson
 H. Nelson
 F. Riebe



D. Scarborough
 J. Skimas
 J. Switzer
 R. Ulrich
 J. Wood
 G. Holliday
FRESHMEN
 J. Morgall



K. Myers
 L. Pritchett
 V. Zeusk
PLEDGES
SOPHOMORES
 D. Huff
FRESHMEN
 D. Ackerman
 R. Bell
 D. Burns



D. Cantrell
 L. Carroll
 D. Gardner
 C. Horn
 F. Kehrl
 G. Smith



sigma chi,

paced by their successful 4th Sweetheart Dance, jogged through another year busily engaged in varied activities in and about the campus. Such things as rummage sales with the Mother's Club, hosts for the Sigma Chi Northwest Province Convention, winners of intramural "B" basketball, runners-up in the campus all-men's sing, and placing second in the nation among Sig chapters in scholarship occupied the majority of the group's time. Individual members found their share of duties to perform on campus in the fields of sports, speech and drama as well as student government. Spring semester found the Sigs vying for position in intramural softball, utilizing a western theme for their spring formal and chasing off to Neskowin for their annual beach trip.

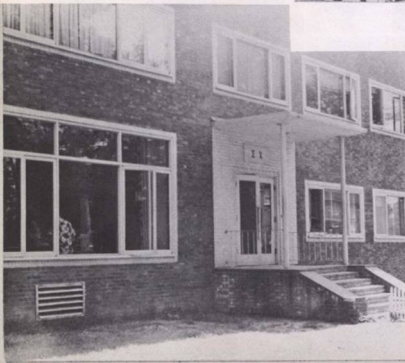


MRS. FURMAN enjoys her role as housemother for the Sigma Chi's.



Left:
The boys look rather glum in spite of the cheerful shirts.

The Sigma Chi wing at the southwest corner of Baxter Hall.



DICK BOLTON and BURNELL AMBROSE, President and Vice President of the Sigs.

SENIORS
 B. Ambrose
 D. Beckett
 D. Bolton
 J. Brown
 A. Lund
 H. Mader
 D. Mallory
 G. Marchington



C. Massey
 D. McLeod
 L. Morrison
 E. Pearson
 F. Ross
 JUNIORS
 D. Anderson
 J. Ancker
 A. Bliss



A. Francke
 J. Hartley
 J. Horsford
 J. Humphries
 J. Irwin
 J. Joseph
 J. Lubin
 L. Masdin



J. Montag
 E. Robinson
 L. Small
 F. Snyder
 V. Doe
 W. Iltson
 J. Witham
 OPHOMORES
 H. Hande



A. Hitchman
 J. Kalez
 J. Karschnia
 K. Kiehl
 L. Larsen
 J. Miller
 F. Pickles
 F. Porter



J. Ringle
 J. Ruff
 J. Schiedel
 S. Smith
 W. Wilson
 J. Wittenberg
 RESHMEN
 Aldrich
 Barkla



J. Benschoff
 E. Brown
 E. Eckley
 G. Goff
 H. Hansen
 J. Mercer
 J. Peterson
 J. Petzoldt



Steindorf
 Timms
 Van Horn
 Weeks



H. Allen
R. Anderson
M. A. Andrewsen
L. Andrews
C. Andrus
D. Asher
R. Atkinson
P. Baker



E. Baldwin
E. Bartlett
R. Bartlett
I. Bates
M. Bates
J. Bedingfield
L. Bedeaul
D. Beebe



R. Bell
D. Bennett
J. Benningshoff
M. Bjarke
F. Blank
G. Blue
F. Bomber
J. Books



D. Bosell
D. Boyes
J. Bradshaw
L. Brinke
A. Brosterhouse
R. Brown
R. Brown
R. Brownstein



R. Brunk
D. Buell
C. Burt
W. Butte
E. Caley
R. Carothers
L. Cherry
G. Chippis



D. Chittick
G. Chohan
R. Christensen
C. Clark
R. Clark
P. Clik
B. Close
C. Cloudy



M. Coates
A. Cofer
C. Conner
P. Cowan
L. Cramer
F. Cummings
J. Davis
M. Davis



S. Dean
D. de Chaby
D. Dougherty
R. Douglas
G. Duncan
H. Dunn
R. Dyer
H. Eckley



E. Edlison
J. Ellis
D. Ertsgaard
K. Evans
W. Ewaliko
J. Farrel
G. Fisher
B. Fortsch





W. Foster
E. Fredrickson
W. Gaibrenth
R. Gatchall
R. P. Gatchell
R. Geer
R. Gibson
J. Gilliland



L. Giovanini
O. Goakey
D. Gralak
G. Grimm
V. Groves
P. Gruver
D. Hale
E. Gunnar



W. Hallin
O. Halvorsen
W. Hamilton
C. Hargrave
E. Hargreaves
R. Harrison
E. Hartman
E. Hiebert



J. Hiebert
L. V. Hiebert
W. Hillard
R. Hoepfner
K. Horn
M. Horn
R. Hughes
C. Hull



M. Hunsaker
S. Huntley
A. Imel
L. Isak
C. Jensen
W. Jones
B. Jory
D. Judd



R. Kaemer
D. Kaufman
G. Klein
J. Kelly
G. Keppinger
D. Kimble
B. Kliever
G. Klun



C. Koani
R. Krigans
J. B. Lambert
N. Lambert
R. Lambert
B. Landon
J. Larkin
J. Larson



J. Lednicky
D. Lewis
W. Lidtke
H. Lopez
M. Lundahl
B. Lytle
G. Mallory
J. Karkooskie



J. Matheny
C. Matter
M. McClanahan
C. Middleton
W. Miller
L. T. Miner
A. Minn
J. Mitchell

L. Monteith
D. Morris
W. Moore
W. Mosier
V. Mumpower
B. Murray
T. Murray
M. Myers



R. Neperud
S. Neperud
C. Nevin
J. Noss
E. Obert
R. O'Brien
G. Odgers
K. Odle



H. Ohlmann
E. Okstad
F. Olson
J. Parker
D. Pearson
R. Pedersen
J. M. Peeler
E. Perkins



H. Peters
P. Phipps
W. Pilling
E. Potter
N. Potter
P. Puckett
D. Quinn
J. Rautenkranz



R. Rautenkranz
R. Reimann
G. Renner
R. Renfrow
D. Revilla
F. Reynolds
R. Riordan
A. Riveness



H. Roble
J. Rockenfeller
I. Roth
J. Rowland
P. Russell
E. Satter
R. Schroeder
R. Scott



D. Sebern
G. Seidler
T. Scrivens
V. Shangle
J. Simmons
G. Simons
W. Sims
J. Slocum



C. Smith
R. Smith
W. Stauffer
R. Stratton
T. Subia
R. Stults
D. Swan
J. Swartz



M. Sweeney
H. Takayama
A. Tarem
E. Taylor
W. Thurman
O. Tonning
D. Tonning
D. Trinklein





P. Turner
L. Uecker
R. Ulrich
H. Ulvin
J. Vanderwal
R. Wall
B. J. Wallace
C. Ward

R. Warren
R. Watson
E. Weber
J. Weber
E. Weinstein
W. Welch
A. Wilcox
L. Wiens

M. M. Will
B. J. Wilson
D. Wilson
G. Wilson
H. Wilson
J. Wilson
W. Wiper
V. Yung

A. Yusha

.... AN OPEN LETTER TO THE READERS

The advertising staff has endeavored to bring to you an advertising section that would interest you, by seeing your friends in pictures, by reading our selected famous sayings and enjoying cartoons and sketches by Nancy Lawson. We have attempted to follow the theme of the 1951 Wallulah, which is sports.

I would like to be unreserved at this point and say that this Wallulah would not have been published in its entirety if these businessmen and merchants had not helped....they helped as a matter of community pride rather than as a civic duty.

Your appreciation and gratitude for the 1951 Wallulah can be expressed by patronizing its advertising supporters.

William Paul Mosier,
Wallulah Business Manager



JOANNE ENYEART — JAN MUNSON — BO BROOKS — LOLA BROOKE — ANN SWANSON

MODEL JANTZEN AND WHITE STAG SPORTSWEAR AT *Miller's*

—PHOTO COURTESY JESTEN-MILLER STUDIO

Nash CONGRATULATES . . .
 More WILLAMETTE UNIVERSITY
 . . . ATHLETES . . .

Back row, left to right: Paul Southworth, Harris Eckley,
 Kent Meyers, Sam Vokes.
 Front row, left to right: Vern Zeuske, Chuck Massey,
 Joe Dwieght, Bill Wittenberg, Bob Schafer,
 Ellis Von Eschen, Don Buell.



MARION  **MOTORS**
 333 Center Street SALEM, OREGON



Flowers
 For
 EVERY
 Occasion

MAY WEEKEND
 QUEEN ALICE ADAMS

**THE
 FLOWER
 BOX**

PHONE 4-1472
 1145 S. COMMERCIAL
 SALEM

Old books, old wine, old nankin blue,
 All things, in short, to which belong
 The charm, the grace, that Time makes strong—
 All these I prize, but (entre nous)
 Old friends are best.

—Dobson



"I hardly ever ope my lips," one cries;
 "Simonides, what think you of my rule?"
 "If you're a fool, I think you're very wise;
 "If you are wise, I think you are a fool."

—Garnett

CITY ELECTRIC, Inc.

ELECTRICAL CONTRACTORS

245 Center • Salem • Phone 4-2244

255 NORTH HIGH STREET
 SALEM, OREGON

This Is the Oregon Home of

"Sloppy Joe"

A DELICIOUS SANDWICH

Woodhoffs



SAN SHOP

Agreeable **FOOD** *Agreeable*
PRICES

INDEX

A Abell, Laura Nan, 179
A CAPPELLA CHOIR, 94
Acheson, Thomas, 181
Ackerman, Thomas Dale, 113, 189
Adams, Alice L., 41, 74, 80, 164, 173
Adams, Diana, 177
Adams, George B., 185
Adams, Kenard Wayne, 185
Adams, Nancy, 56, 177
ADMINISTRATION, 34
Albright, Warren H., 104
Aldinger, Marjorie, 107, 173
Aldrich, Jerry, 191
Aldrich, Les., 54, 100, 103, 181
Allen, Homer L., 45, 192
Allen, Jeannette, 179
Ailer, Harriet Ann, 98, 101, 175
Ailer, Wilma, 98, 175
ALPHA CHI OMEGA, 170
ALPHA LAMBDA DELTA, 98
ALPHA PHI OMEGA, 100
Ambler, John, 76, 98, 99, 185
Ambler, Shirley, 109, 175
Ambrose, Burnell, 54, 102, 103, 190, 191
Anderson, David, 191
Anderson, Robert, 181
Anderson, Robert H., 45, 192
Andresen, Mary Alice, 192
Andrews, Leon L., 192
Andrus, Charles W., 192
Anicker, John C., 191
Armson, James George, 185
Armstrong, Maxine, 179
Arpke, Cynthia Lee, 105, 177
ART DEPARTMENT, 49
Aschenbrenner, Stanley, 64, 71, 79, 123, 181
Ascher, Delman, 192
Asher, Rod, 181
Asvik, Charleen, 105, 169, 171
A.S.U.U., 70
ATHLETIC BOARD, 78
Atkinson, Earl, 155, 187
Atkinson, Robert Wilson, 192
Averill, Carolyn, 105, 177
Avriette, Ann, 50, 86, 171
Bailey, Ardith, 99, 171
B Bain, R. Verne, 98, 99, 142, 185
Baker, Barbara Allene, 76, 99, 107, 113, 177
Baker, Paul D., 155, 192
Baldwin, Elmer G., 45, 104, 192
Ball, Ella Lou, 101, 108, 171
B.A.N.D., 92
Banta, Carol Phoebe, 105, 175
Banz, Dolores, 177
Barkla, Paul, 85, 191
Bartlett, Eugene Pierce, 192
Bartlett, Ronald, 113, 192
BASEBALL, 17
BASKETBALL, 14, 24, 148
Basl, Marie Ruth, 179
Batcheider, Robert Bruce, 108, 181
Bates, Ivyll Reine, 113, 192
Bates, Millard E., 103, 107, 113, 192
Bataglia, Norman, 187
BAXTER HALL, 180
Beachler, Dorothy, 179
Beals, Rodney, 75, 109, 113, 143, 185
Beastrto, Craig, 185
Beckett, J. David, 54, 134, 191
Beckham, Johanna, 105, 175
Bedingfield, James B., 192
Bedsaul, Leonard C., 192
Beebe, Darlene, 192
Bell, Robert W., 189, 192
Benard, Martha, 41, 101, 177
Benner, Virginia, 98, 101, 171
Bennett, Donald Allison, 185, 192
Bennett, Harriet, 105, 171
Bennett, Richard Charles, 185
Bennett, Thelma, 171
Benninghoff, Joe, 192
Benshoof, Ken W., 149, 191
Bergmann, Jim, 77, 155, 185
Berry, David, 99, 113
BETA ALPHA GAMMA, 99
BETA THETA PI, 184
Biederman, Carolyn, 56, 179
BIOLOGY, 66
BISHOP HOUSE, 182
Bissell, Bill, 130, 142, 187
Bjorke, Mavis Ann, 192
Blakney, Richard B., 181
Blanes, Carl, 101, 106, 109, 140, 181
Blank, Franklin Warren, 192
Bliss, Audrey, 75, 101, 106, 113, 177
Bliss, M. Sherman, 122, 125, 191
Blue, Gladys, 101, 192
Boatman, Bruce Keith, 113, 189
Boe, Wallace, 103, 191
Bolliger, Evelyn, 79
Bolliger, Ralph Wendell, 99, 183, 185
Bolton, Richard N., 66, 183, 190, 191
Bomber, Francis J., 54, 112, 192
Books, Joyce, 192
Booth, Harriet, 171
Borquist, Bob, 181
Bosell, David A., 192

HERRALL-OWENS CO. SALEM, OREGON

For fine
... Printing

Johnson-Siewert & Aldrich Printers

Telephone 3-7490 162 S. Liberty Street
SALEM, OREGON

N.L. Stiff Furniture Co COMPLETE HOUSE FURNISHERS

440-450 COURT STREET—Phone 3-9185

- SALEM
- SECOND AT BROADALBIN—Phone 95
- ALBANY
- FIRST AT MAIN—Phone 1972
- SILVERTON

Man is a pliable animal, a being who gets
accustomed to everything!!

—Dostoyevsky

ACE BARBER SHOP

Man, woman, and devil,
are the three degrees of comparison.

KANDEL KNITTING MILLS

VIBBERT
Electric SERVICE CONTRACTING
 551 COURT STREET • SALEM, OREGON



JAN STARK LUDENE HARGRAVE NICKIE HAYNES
 WILLAMETTE SENIORS

Roberts Bros.

177 NORTH LIBERTY
 SALEM

"He who loses wealth loses much; he who loses
 a friend loses more; but he that loses his courage
 loses all."

—Cervantes

Merrill D. Ohling

INSURANCE

250 North High

Telephone 2-4129

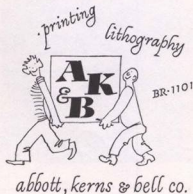
Salem, Oregon

Serving
 Willamette
 Students

for more than **82** years

LADD & BUSH — SALEM BRANCH
 OF THE
 UNITED STATES NATIONAL BANK

"AN OREGON BANK SERVING OREGON"



INDEX

Botkin, Priscilla. 171
 Boudon, Don. 181
 Bowe, Chuck. 62, 102, 103, 189
 Boyes, Dean H.. 192
 Bradshaw, James C.. 192
 Brand, Donald. 54, 181
 Breaky, Betty Ann. 113, 142, 175
 Bridgeman, Sara Jane. 177
 Brinks, Lois C.. 192
 Brookes, Lola M.. 171
 Brooks, Bo. 173
 Brosterhaus, Anthony D.. 104, 112, 192
 Brower, Richard. 189
 Brower, Herb J.. 191
 Brown, Alva. 191
 Brown, Darrell. 185
 Brown, Jack Ralph. 50, 72, 128, 130, 191
 Brown, Robert Roy. 192
 Brown, Roland V.. 192
 Brownstein, Richard. 104, 192
 Brunk, Ronald. 77, 192
 Bryant, Peter L.. 62, 189
 Buehning, Edmond Arthur. 107
 Buell, Donald. 192
 Buland, George. 108, 187
 Burns, Dave Wallace. 181, 189
 Burns, Tom. 104
 Burt, Charles Duane. 47, 104, 192
BUSINESS. 54
 Buss, Donald Alfred. 104
 Butte, William Carl. 192
C
 Caley, Donna Lea. 112, 175, 192
 Caley, Eldon Frederick. 189
 Calkins, Felix Ernest. 130, 185
 Campbell, Malcolm. 185
 Cambell, Mary (Frances). 113, 158, 177
CAMPUS Y. 107
 Cannon, Dorothy. 173
 Cannon, Jeanette Carroll. 179
CANTERBURY. 112
 Cantrell, Don. 181, 189
 Cantril, Ann. 105, 179
CAP AND GOWN. 100
 Card, David Eugene. 108, 187
 Carlson, Herb. 68, 185
 Carlson, Joan. 59, 100, 125, 169, 174, 175
 Carothers, Raleigh Dale. 192
 Carpenter, Donald L.. 38, 72, 74, 185
 Carpenter, Jim. 67, 185
 Carroll, Lawrence. 189
 Carroll, Marjorie Ann. 179
 Case, Leah. 91, 175
CAT CAVERN. 96
CHAPEL BOARD. 78
 Charasse, Rene. 112, 181
 Cheavens, Sallie. 112, 179
 Cheldelin, Donna Jean. 171
CHEMISTRY. 68
 Cherry, Lawrence Truman. 67, 192
CHI OMEGA. 172
 Chippis, Grant W.. 50, 192
 Chittick, Donald Ernest. 192
 Choban, George. 67, 192
 Christensen, Robert Orlo. 67, 192
 Chute, Jackie. 56, 73, 100, 171
 Clark, Charles C.. 192
 Clark, Donald E.. 192
 Clark, Robert L.. 192
 Clarno, Bud. 181
 Click, Patricia. 192
 Clifford, Shirley. 98, 99, 107, 179
 Close, Bertrand James. 192
 Cloudy, Charles Lester. 104, 192
 Coates, Marilyn L.. 192
 Cocking, Richard. 187
 Cocking, Rollin. 76, 107, 187
 Coen, Jerry. 75, 100, 189
 Cofer, Arthur. 192
 Coggeshall, Susan. 56, 179
 Cole, Richard. 185
COLLEGIAN. 84
 Collier, Orin B.. 99, 181
 Collins, George A.. 187
 Colony, Jo. 173
 Cone, Marjorie Jean. 105, 179
 Conklin, Margaret. 106, 113, 173
 Connell, Grace Caroline. 113, 187
 Connell, Jane. 105, 177
 Conner, G. Cecil. 62, 103, 192
 Conner, Leah. 179, 113
 Cooper, Calvin Charles. 155, 181
 Cords, Fred. 197
 Corner, Ivan (Bud). 185
 Corner, Marie. 76, 171
 Colton, Mark F.. 103, 187
 Covert, Bill. 189
 Cowan, Peter C.. 112, 192
 Cox, Norma. 101, 179
 Craig, Prudence. 88
 Crakes, Jean. 99, 171
 Cramer, Loy. 68, 100, 189, 192
 Cramer, Stanley. 182
 Crane, Carolyn. 105, 158, 177
 Crossler, Darrell Lee. 187
 Crouch, Joyce. 105, 173
 Cummings, Fred. 192
 Currie, Joan Elizabeth. 105, 179

W. L. ANDERSON, INC.

DeSOTO PLYMOUTH

Sales and Service



360 Marion

Phone 3-7703



Delicious Hamburgers
Home Made Pies



We Make Our
Own Ice Cream



TOP HAT RESTAURANT
and
ICE CREAM STORE

1275 STATE ST.

Phone 2-9249

We feature fine food and tasty ice cream



For Flowers



Breithaupt's

(say Brite-hop)

DOWNTOWN
447 Court
Phone 3-9179

HOLLYWOOD BRANCH
2057 Fairgrounds Rd.
Phone 3-9129



Bicycles, Motorcycles, Keys Duplicated, Lawn Mowers

"Everything in Wheel Goods"

HARRY W. SCOTT
"THE CYCLE MAN"

147 South Commercial Street

Phone 3-4516

If you pick up a starving dog and make him prosperous, he will not bite you. This is the principal difference between a dog and a man.

—Mark Twain

CLOTHES BY "THE HOUSE OF WORSTED-TEX"

S & N CLOTHIERS

S & H Green Stamps

456 STATE ST.

FAMOUS
FOR
PORTRAIT
PICTURES



Varsity
Queen
MARY
CAMPBELL

Steimounts Studio

Phone 2-8682 • 1849 STATE STREET



POPULAR . . .

... BECAUSE IT'S GOOD

FAMOUS
FOR
PORTRAIT
PICTURES



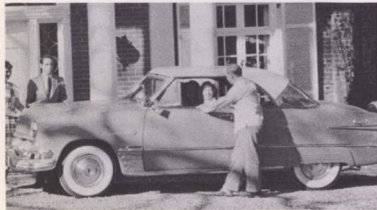
Varsity
Queen
MARY
CAMPBELL



DEAN HENDERSON, Willamette Senior

CAPITOL BOWLING ALLEYS

3-3575 - 485 FERRY ST.



"Tops in Sports"

WILLAMETTE UNIVERSITY
and the

Victoria



VALLEY MOTOR CO.

CENTER AT LIBERTY
SALEM

The nearer I approach the end,
the plainer I hear around me
the immortal symphonies
of the worlds which invite me.
It is marvelous, yet simple.

—Victor Hugo

PEACOCK CLEANERS

Phone
3-5992



Salem, Oregon

485

Center St.

There are two tragedies in life.
One is not to get your heart's desire.
The other is to get it.

—G. B. Shaw

COMMERCIAL BOOK STORE

141 N. Commercial St. • Phone 3-4534

SALEM, OREGON

INDEX

D Daigle, Ted, 181
Dally, Paul John, 181
DARKROOM, 83
Davies, Olwyn K., 66, 189
Davies, Gilbert W., 181
Davis, Jim, 182
Davis, Mabel, 113, 179
Davis, Marcella B., 192
Dawson, Marguerite, 105, 175
Deakins, Arlene, 101, 173
Deal, Allan Hanvey, 181
Dean, Shirley Anne, 101, 106, 192
Deardorff, Valerie, 175
DeBord, Bob, 103, 189
DeChaby, Darrel, 106, 192
Deetz, Marie, 105, 171
DELTA GAMMA, 174
Denry, Duane, 98, 99, 155, 185
Dennis, Don, 187
DEPARTMENTS, 48
Detlofsen, Dolores, 98, 106, 113, 171
Diamond, Chester Arthur, 41
Dougherty, Douglas, 112, 189, 192
Doughlon, Nancy, 177
Douglas, Robin Diana, 192
Drake, Donald, 185
DRAMA, 91, 140
duBuy, Jeanne, 60, 109, 113, 173
Duncan, George R., 192
Dunn, Harvey E., 192
Dunn, Robert P., 104
Durbini, Ardath, 175
Dus, Glenn, 131, 187
Duvall, Ernest R., 100, 189
Dyer, Robert J., 192

E Easton, Claribelle, 173
Eatinger, Louise, 173
Eby, Betty Lou, 173
Eckley, Harris L., 191, 192
ECONOMICS, 54
Egeil, Joyce, 100, 175
Edison, Edward, 192
EDUCATIONAL ACTIVITIES BOARD, 79
Edwards, Glenn Thomas, 100, 189
Edwards, Miles, 68, 185
Edwards, Prudence, 99, 177
Elliott, Janeth, 77, 105, 177
Ellis, James R., 80, 189
Ellis, John, 182
Emerson, Carol, 105, 155, 171
Empsey, Donald, 107, 187
Endsley, Richard Eugene, 54, 109, 125, 185
ENGLISH, 50
English, Marilyn, 179
Enns, Marilyn Nancy, 105, 134, 171
Enright, Thomas Cornelius, 104
Enyeart, Joanne A., 171
Erickson, Norma L., 105, 171
Ernest, Gordon, 106
Ertsgaard, Duane, 61, 109, 192
Eshleman, Earle Delmar, 189
Esey, JoAnne, 15, 177
Evans, Keith Duncan, 192
Ewaliko, Bill, 54, 103, 192
Ewen, Doris, 108, 171

F Faber, Patricia Ann, 173
FACULTY, 49
Falkenhagen, Jack, 185
Farnes, Pat, 175
Farrell, Jack Patrick, 104, 192
Fedje, Earl W., 80, 185
Fisher, Delores Jean, 61, 99, 173
Fisher, Gordon E., 69, 192
FOOTBALL, 11, 120
Fooshee, Jane, 98, 101, 106, 171
FORENSICS, 89
Formick, Joseph D., 189
Forristel, Francis Jack, 187
Fortsch, Byron L., 192
Forster, David, 187
Foster, Elizabeth Anne, 175
Foster, Joyce Ellnor, 82, 105, 171
Foster, Walter W., 145, 193
Franzke, Allan, 101
Fredrickson, Ellen, 193
Freeman, James Edward, 84, 98, 113, 189
FRESHMEN, 77
Fritts, Sylvan J., 104
Frost, Joyce, 77, 134, 158, 177
FUSSER'S GUIDE, 88
FUTURE TEACHERS OF AMERICA, 106

G Galbreath, William A., 193
Gallo, Phil, 181
Gardner, Don Edward, 189
Garrett, Barbara Ann, 49, 173
Garrett, James E., 75, 79, 139, 183, 186, 187
Gatchall, R., 193
Gatchell, R. F., 103, 193
Gaw, Richard, 181
Gay, Jim, 106, 187
Geer, Richard John, 106, 193
Geer, Richard Lansing, 181
Gertson, Barbara, 101
Gibbens, Ann, 101, 113, 177

SALEM BRANCH

First National Bank

OF PORTLAND



Chemeketa at Liberty

Telephone 3-3181

Member Federal Deposit Insurance Corp.

"Let's Build Oregon together"

There is no royal road to anything. One thing at a time, all things in succession. That which grows fast withers as rapidly; that which grows slowly endures.

—J. G. Holland

BURKE'S CAMERA SHOP

"Everything for the Photographer"

174 N. Commercial • Salem 2-1841

There is a certain relief in change, even though it be from bad to worse; as I have found in travelling in a stagecoach, that it is often a comfort to shift one's position and be bruised in a new place.

Irving—*Tales of a Traveller*

PADE'S Grocery & Market

GROCERIES — MEATS — VEGETABLES

Call 3-9135 for Delivery

1244 STATE — SALEM

I hold not with the pessimist that all things are ill, nor with the optimist that all things are well. All things are not well, but all things shall be well, because this is God's world.

—Browning

JACKSON JEWELERS

RINGS — WATCHES — GIFTWARE

225 N. Liberty — Salem

A little rebellion now and then . . .
is a medicine necessary for the sound
health of government.

Jefferson—Letter to Madison

VALLEY PACKING COMPANY

Cascade Brand -- U.S. Inspected Meat
Salem, Oregon

"The perfect gentleman uses the books to bring
together friends, and through friendships
he bolsters up manhood at its best."

—Confucius

HIGHWAY FUEL CO.

Sawdust • Oil • Wood
Phone 3-6444 — Salem — 2390 Fairgrounds Rd.

DRINK

**MAYFLOWER
MILK**

AND GROW HEALTHY
as Willamette Athletes

DAIRY COOP ASSN.

2135 FAIRGROUNDS RD.
Phone 3-9205—SALEM



"MAC'S" for those

- afternoon snacks
- coke dates
- after-dance refreshments

McMILLAN'S Fountain-Lunch

1949 STATE STREET



The SALEM RECORD SHOP

Downstairs Oregon Building
STATE AT HIGH PHONE 3-8632

MASTER SERVICE STATIONS, INC.

Goodyear Tires—Batteries—Recapping

THREE LOCATIONS

- CENTER and COMMERCIAL
- COURT and CAPITAL
- LIBERTY and MARION

Salem, Oregon

The truest test of civilization is not
the census, nor the size of cities, nor
the crops; no, but the kind of man the
country turns out. —Emerson

The
Quisenberry
Pharmacies
that operate as one

Salem, Oregon

The Quisenberry Corner
Court and Commercial
Phone 3-9123

The Medical Center Branch
2400 Grear
Phone 3-3157

INDEX

Gibson, Robert W., 45, 104, 193
 Gillihan, Chester, 109, 187
 Giliberson, Jeanette, 169, 177
 Gilliland, Janet Charlene, 59, 112, 192
 Gilmer, Jean Marie, 50, 85, 100, 139, 169, 173
 Gilson, Layton Joseph, 185
 Giovanini, Louis M., 193
 Girod, Alice, 105, 155, 177
 Girod, Clifford Roland, 103, 189
 Gladden, Janice, 175
 Glenn, Michael, 103, 187
 Goakey, Otis W., 45, 104, 193
 Goff, Robert Chase, 113, 191
 GOLF, 23
 Goodridge, Florence, 59, 100, 101, 171
 Gore, Nancy Rena, 112, 175
 Gordon, Ernest F., 181
 Gossett, Gerry, 175
 Gottwald, Lois Ann, 41, 101, 171
 Goudy, Alan, 67, 185
 Grabow, John, 189
 Gragg, Linda, 171
 Graham, Frances Jane, 105, 177
 Gralab, Dwight Earl, 193
 Gray, Jane, 105, 177
 Gray, Selma Jayne, 179
 Green, Betty Ann, 179
 Gregg, Clifford C., 83, 86, 98, 100, 107, 113, 185
 Griffen, Shirley, 98, 99, 107, 113, 177
 Griffiths, Ronald, 181
 Grimm, Gerald, 193
 Grinnell, Yvonne, 179
 Groves, Vernon A., 183
 Gruver, Fred W., 67, 193
 Guice, Margaret Elaine, 100, 101, 106, 177
 Gunn, Jack, 73, 81, 89, 98, 185
 Gunnar, Edith, 193
 Gunther, Don, 100, 189
 Gustafson, Beverly, 101, 107, 171
 Gustafson, Delores, 105, 113, 171
 Gutzier, Charles H., 187

H Hale, Doris G., 101, 193
 Hall, Mary Ann, 50, 51, 179
 Hallin, Ruth Manley, 177
 Hallin, William C., 104, 193
 Halsan, Robert Lee, 191
 Halvorson, Omar W., 45, 193
 Hamilton, Wesley S., 193
 Hammer, Kermit, 187
 Hammond, Patty Jo, 60, 100, 109, 175
 Hammond, Phil, 101, 185
 Hampton, Leslie, 104
 Hande, Jack, 191
 Harder, John Wilson, 182
 Hare, Shirley Marie, 77, 173
 Hargrave, Charles O., 193
 Hargrave, Ruth LuDene, 51, 78, 79, 164, 177
 Hargreaves, Edward V., 153
 Harris, Marjorie Ruth, 177
 Harris, C. Charles, 140, 182
 Harrison, Robert R., 193
 Hartley, James, 191
 Hartman, Edward Daniel, 193
 Haynes, Bernice (Nickle), 52, 101, 106, 164, 177
 Hearne, Robert V., 187
 Hedeon, Wesley Richard, 185
 Heiser, Eldon W., 182
 Helweg, Shirley Ann, 98, 99, 107, 113, 177
 Hermstrom, Betty, 175
 Hess, William A., 100, 189
 Hewitt, Gordon A., 193
 Hiebert, Elmer John, 193
 Hiebert, Janice M., 193
 Hiebert, LaVern D., 193
 Hill, Edna Marie, 101, 105, 155, 169, 175
 Hill, William, 185
 Hillard, Wayne, 48, 193
 Hilmer, Robert C., 131, 187
 Hirtzel, Jo Ann Isabel, 105, 113, 175
 HISTORY, 56
 Hitchman, Don L., 108, 191
 Hitchman, James H., 155, 185
 Hoepfner, Bob, 193
 Hoffman, Martin John, 104
 Holbeck, Joan, 59, 107, 175
 Holliday, Eugene, 189
 Holznagel, Melvin, 185
 HOME ECONOMICS, 65
 Hoppe, Harley, 78, 135, 185
 Horn, Calvin, 189
 Horn, Jane Lee, 105, 177
 Horn, Kenneth, 193
 Horn, Martin E., 185
 Hosford, Don, 103, 191
 Howat, Betty Lewers, 80, 105, 155, 171
 Howe, Mary Adelaide, 171
 Huff, David L., 189
 Hughes, Richard, 193
 Huil, Cyril, 193
 Humphries, Don, 103, 191
 Hunsaker, Morris, 193
 Huntley, Sarah C., 57, 193
 Hutchison, Marceline, 171
 Hutchinson, Shirley M., 175
 Hunter, Marilyn, 173

... FOLLOW THE UNIVERSITY MEN TO

THE MAN'S SHOP

Moxley and Huntington

for the

- BEST STYLES
- BEST QUALITY
- BEST VALUES

416 STATE STREET

SALEM, OREGON

STATE STREET MARKET

EMMETT KLEINKE

Fresh Fruits and Vegetables

Groceries and Bakery Goods Quality Meats

1230 State Street

Phone 3-9127

WE CONGRATULATE
 WILLAMETTE AND ITS
 ATHLETES . . .



Back row, left to right: Jim Morgali, Don Drake, Al Miles, Cece Connors, Phil Hammond.
 Front row, left to right: Bob Petzoldt, Bob Bell, John Ambler.

Cherry Lane Cheese Co.

MANUFACTURERS OF COTTAGE CHEESE

Dealers in Fancy Cheese

Telephone 3-4261

515 SOUTH COMMERCIAL STREET

SALEM, OREGON

. . . Compliments of
**CAPITOL COFFEE
SHOP**

Mr. and Mrs. Jack Scott,
Managers

YEAR-AROUND
SPORTSWEAR
AT . . .

Johnson's
The Store for Ladies
Salem, Oregon

Slumber not in the tents of your fathers.
The world is advancing. Advance with it!
—Mazzini

Capitol Office Equipment Co.

Office Machines: New and Used

531 Court • Salem • 3-5584

A Good Place To Save
A Good Place To Borrow

2½% Current Dividend 2½%

**First Federal Savings
AND LOAN ASSOCIATION**
129 N. COMMERCIAL
SALEM, OREGON

Kuhn's Shoe Repairing
"WE REBUILD 'EM"

*Workmanship and Materials
of the Finest Quality*

464 Court Street Phone 3-9576

Flowers have an expression of countenance as much as men or animals. Some seem to smile; some have a sad expression; some are pensive and diffident; others again are plain, honest and upright, like the broad-faced sunflower and the hollyhock.

Henry Ward Beecher—A Discourse on Flowers

FLOWERS

"Frosty" Olson

"Salem's Bearcat Florist"

Court and High Streets • Phone 3-7166



Famous
**Custom Laundered
Shirts**

- ✓ Look Better
- ✓ Fit Better
- ✓ Feel Better

Rawlinson's
Capital City **LAUNDRY**
Beautiful Cleaning

INDEX

I Imel, Arthur Madison, 193
Ingraham, Marilyn, 105, 177
INTER-FAITH COUNCIL, 109
INTER-FRATERNITY COUNCIL, 183
INTRAMURALS, 26
Irwin, Donald, 107, 191
Isaak, Richard, 187, 193
Ishikawa, Wesley, 185

J Jackson, Alice Elizabeth, 179
Jackson, Clyde R., 75, 187
Jackson, James Phillip, 98, 99, 113, 185
Jacob, Ted P., 77, 191
Jenkins, Donna R., 179
Jenson, Clifford Leo, 193
Jernstedt, Edna, 59, 179
Jessup, William Oliver, 109, 155, 187
Jewell, Paul, 76, 103, 185
Johannaber, Lorna Jean, 113, 177
Johannaber, Jodie, 101, 113, 177
Johnson, Jacqueline, 107, 170, 171
Johnson, Mary Lou, 105, 177
Jones, Jo Anne, 179
Jones, Patricia Elizabeth, 177
Jones, Robert Paul, 104
Jones, Walter, 193
Jory, Beverly, 193
Joseph, Thomas P., 75, 191
JOURNALISM, 50
Juba, George R., 191
Judd, Dorothy I., 193
JUNIORS, 75

K Kaemmer, John, 41, 181
Kaemmer, Richard Louis, 193
Kaima, Gloria, 171
Kalez, Tony, 191
Kaplan, Boris, 106, 140, 181
Karschnia, Paul Theodore, 191
Kaufman, Douglas E., 46, 104, 193
Kealoha, Lei, 179
Kehrl, Franklin W., 189
Kell, Jean, 65, 177
Kelley, Gerry E., 181
Kelly, Joyce, 183
Kenyon, Catherine, 179
Keppinger, Gary, 185, 193
Kerr, Robert E., 185
Kiekel, Jack Lee, 109, 191
Killefer, Earl, 185
King, Elaine, 105, 112, 179
Kirby, Joyce, 171
Kirtland, Diane, 179
Kimble, Doris, 193
Kiang, Audrey, 105, 179
Kleen, Glenn, 193
Kiepp, Thelma, 105, 173
Kliever, Beverly, 185
Klingworth, Ann, 105, 175
Knox, Kenneth, 181
Knywkowska, Gema, 112, 175
Koani, Charles, 193
Kock, Alyce, 112, 173
Kostenbader, Betty, 179
Koutny, Dolores, 112, 173
Krigens, Rainis, 193
Kwan, Stephen, 181
Kyle, Jean Arden, 171

L Lacey, James, 74, 100, 106, 109, 181
Lafky, Elton T., 191
Lambert, John, 109, 193
Lambert, Norman, 193
Lambert, Richard, 193
Lancaster, Rita, 112, 177
Landon, Beverly, 193
Langley, Barbara, 171
Langworthy, Jean, 179
Lanke, Vernita Joan, 105, 177
Lanvier, Murley, 104
Larkin, Joe, 46, 104, 193
Larsen, Jack, 191
Larson, Jill, 193
Larson, Oscar Jack, 185
Larson, Patricia Jill, 139, 173
Larson, Virginia, 177
Lauber, Loraine, 105, 177
LAUSANNE HALL, 178
LAW, 44
Lawrence, Keith, 85, 91, 101, 113, 185
Lawrence, Kent, 85, 91, 98, 101, 106, 113, 140, 185
Lawson, Norman, 76, 99, 187
Lawson, Nancy, 87, 99, 171
Lednický, John, 193
Lee, Mary Louise, 79, 82, 84, 101, 177
Lehman, Fred, 181
Lekas, Gary James, 187
Leonard, Marjorie Jean, 105, 171
Leslie, Anne, 112, 175
LETTERMEN'S CLUB, 102
Lewis, Darrell, 193
Lidke, William A., 106, 193
Lilles, Amaryllis, 106, 108, 117, 177
Lincoln, Fred A., 187
Loder, Theodore William, 91, 103, 148, 151, 185
Logue, Douglas, 103, 148, 150, 151, 181
Long, Patricia Adele, 175

Marriage is that relation between man and woman in which the independence is equal, the dependence mutual, and the obligation reciprocal.

—L. K. Aspancher

"Fight On Bearcats"

BLUE LAKE PACKERS, INC.



CLIFF GREGG — WILLAMETTE SOPHOMORE

Style Center for Men

Bishop's

3-4933 — SALEM — 145 North Liberty

WILLS MUSIC STORE

COMPLETE MUSIC CENTER

Records Pianos Sheet Music Band Instruments
Repairs Organs Sewing Machines

Mr. and Mrs. Vernon Wiscarson

Phone 3-4959

432 State Street

Salem

There is nothing so stupid as an educated man,
if you get off the thing that he was educated in.
—Will Rogers

LAUNDERETTE SELF-SERVICE

Washers • Dryers • Ironers

1255 Ferry St. SALEM Phone 2-4555



Our special is the same as in 1935

"The best food and service at a minimum price"

WHITE'S LUNCH & DRIVE-IN

1138 SOUTH COMMERCIAL

BURRIGT'S UNIVERSITY CLEANERS

Save with Cash and Carry

We Specialize in Formals

Two Blocks West of Campus on Ferry Street

The things taught in schools and colleges are not
an education, but the means of education.

—Emerson—Journal, 1831

Sunset Doughnut Co.

2362 N. Front ♦ SALEM ♦ Phone 2-4737

Bonesteel Sales & Service, Inc.

Studebaker

370 N. Church Street

Phone 3-9277

SALEM

OREGON

Ambition has but one reward for all:
A little power, a little transient fame,
A grave to rest in, and a fading name!
William Winter—The Queen's Domain

WOODRY FURNITURE CO.

"EVERYTHING IN FURNITURE"

474 S. Commercial ★ Salem, Oregon

"THE BEST IN EVERYTHING
FROM PORTRAITS TO PHOTO SUPPLIES"

McEwan's Photo Shops

435 State Street SALEM Phone 3-5470

209 Oak Street SILVERTON Phone 2251

2058 North Capitol SALEM Phone 2-4422

Convenient Parking for You
In Downtown Salem

- EFFICIENT SERVICE
- MINIMUM PRICES

SHOPPER'S CAR PARK

TWO LOCATIONS

- LIBERTY AT FERRY
- COMMERCIAL AT FERRY

INDEX

Lopez, Humberto, 193
Loveless, Eleanora, 59, 74, 130, 171
LumiJarvi, Mary, 50, 51, 171
LumiJarvi, Nancy, 105, 171
Lund, Albert, 57, 191
Lundahl, Marjorie, 62, 193
Lytle, Beverly Jean, 193

M McBride, Leonard N., 104
McCain, Doris, 101, 175
McCarty, Jack A., 102, 181
McClanahan, Marques C., 89, 193
McCord, Colleen, 175
McCormick, Jeri, 105, 179
McCulloch, Doris, 99, 105, 173
McDermott, Margaret A., 107, 177
McDougall, Jeff, 61, 109, 186, 187
McDougall, William, 84, 179
McElhinny, Sue, 175
McHale, James, 105, 189
MacKay, Marilyn, 173
McLauchlan, Mary, 105, 171
McLeod, Carol, 173

Maddox, Duane Carole, 175
Mador, Howard A., 74, 108, 191
Maletis, James, 112
Mallory, Gordon, 41, 183
Makinson, Wanda Lee, 179
Marchington, Gene, 57, 191
Markoski, John, 103, 193
Marks, Nancy, 98, 99, 107, 113, 175
Marshall, Martha, 105, 177
Martin, Charles, 41, 93, 185
Martin, Evelyn Jean, 171
Massey, Chuck, 62, 191
MATHEMATICS, 67
Matheny, John E., 46, 104, 193
Matlie, George, 185
Matter, Caroline, 193
Maudlin, Lowell E., 103, 191
Mears, Donna M., 112, 179
Meinke, Garold, 187
Meiseger, Marilyn Edith, 105, 177
Melia, Frances Ann, 175
Meller, Sue, 101, 106, 140, 177
Mercer, Richard Lee, 113, 155, 191
Mertz, Theodore Hawley, 103, 119, 185
Merz, Marilyn, 171
Mickle, Lawrence Christie, 185
Middleton, Calvin V., 193
Miller, Albert, 179
Miles, Albert, 62, 103
Miller, Alice, 179
Miller, Barbara Lee, 53, 173
Miller, Delores, 105, 175
Miller, Don J., 193
Miller, James Burr, 187
Miller, Robert James, 103, 191
Miller, William, 193
Miner, L. T., 59, 193
Minn, Albert, 62, 103
Mintonye, Jo Ann, 173
Mitchell, Jack Robert, 193
Mittelsdorf, Rod, 181
MODERN LANGUAGES, 53
Moffitt, Sally, 175
Montag, Dan, 103, 191
Monteith, Loree, 194
Moddhe, Neil S., 182
Moody, Beverly, 175
Moore, Sandra, 179
Moore, Walter Dean, 194
Morgali, James Rollin, 113, 189
Morriss, Elizabeth, 177
Morris, David H., 194
Morrison, Don, 77, 155, 185
Morrison, James, 191
Morse, Steebes Peter, 181
Moster, William Paul, 112, 194
Motschenbacher, Joanne, 98, 171
Mounicastle, Jane, 179
Moyer, Leon Jim, 181
Mulkey, Ed Warren, 189
Mullin, Betty Jean, 107, 169, 171
Mumpower, Vervyle Grant, 104, 194
Munson, Janet, 169, 173
MU PHI EPSILON, 101
Murray, Berwin, 41, 194
Murray, Terry, 41, 194
MUSIC, 40
Myers, Marilyn Joan, 60, 194
Myers, Kent, 77, 113, 189
Myers, Ray A., 189

N Nandie, Gloria, 101, 171
Nee, Charles, 74, 135
Nelson, Hugh, 76, 82, 108, 189
Nelson, Stanley, 85, 182
Neperud, Ronald, 194
Neperud, Stanley Phillip, 103, 194
Nevin, Colbert Brent, 194
NEWMAN CLUB, 112
Newson, Darlene Rae, 179
Newton, Laura Lee, 108, 171
Nichols, Virginia, 105, 179
Nicks, Stephen, 181
Nicoll, George Douglas, 183, 185



**LITE-ROCK BLOCKS
PLASTERERS SUPPLIES
FIREPLACE SUPPLIES
STEEL AND ALUMINUM
WINDOWS
FOLDING DOORS**

**PUMILITE
BLOCK &
SUPPLY CO.**

TELEPHONE 2-2445
DALLAS HYWAY—WEST SALEM
SALEM, OREGON



ENJOY
OIL
HEAT

Home Fuel
Oil Co.
AL LOUCKS

1710 North Commercial Street

Phone 2-4119

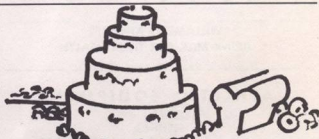
Salem, Oregon



BAR-B-Q

HAM — BEEF — PORK
All Meats Barbecued Over Live Oak Fire
Oak Barbecue Pit

159 SOUTH HIGH ST. — SALEM, OREGON



BENSON BAKING COMPANY

—Bread—Rolls—Cakes—Pies—Cookies—Wedding Cakes—

TWO LOCATIONS

264 N. COMMERCIAL

347 STATE STREET

Otto J. Wilson Company

Buick Sales and Service

COMMERCIAL AT CENTER

SALEM, OREGON

Established 1902

Kenneth Wilson

Otto J. Wilson

Unruh Knapp



PRINTING COMPANY

Telephone 3-3522

PIONEER TRUST BUILDING — SALEM



DISTINCTIVE APPAREL FOR WOMEN

460 STATE STREET

Phone 3-8188 — SALEM



SALEM GOLF CLUB

DRINK CURLY'S MILK —
— FOR YOUR HEALTH



ESTABLISHED 1925

TELEPHONE 3-8783

HANS (CURLY) HOPFSTETTER, MANAGER

FAIRGROUNDS ROAD AT HOOD STREET

SALEM, OREGON

WILLAMETTE ATHLETES
DRINK MILK FOR THEIR HEALTH

ATHLETIC EQUIPMENT

- GOLF
- FISHING
- GUNS and AMMUNITION
- TENNIS EQUIPMENT
- SKI RENTALS

Barb's Sporting Goods

"THE SPORTSMAN'S STORE"

175 S. High

Phone 3-4555

FOR COMPLETE HOME FURNISHINGS



R.L. Elfstrom Co.

340 Court St. • SALEM • 2-2493

INDEX

Neiswander, Paul S., 187
Neiswander, Shirley, 173
Noa, James K., 62, 103, 194
Nordhill, Claude, 103, 119, 189
Nosaka, Elliott, 181
Noteboom, Dorence, 77, 191
Notson, Jane Carolyn, 105, 155, 177

O Oakes, Eleanor, 177
Oakes, Helen, 61, 108, 109, 177
Obert, Edward E., 61, 109, 194
O'Brien, Bobbie, 194
Odgers, George A., 67, 194
Odie, Robert, 194
Odering, Walter Frank, 103, 187
Ogle, Marijo, 175
Ogle, Sally, 175
Ohlmann, Harry Henry, 46, 104, 194
Ohlund, Eric, 187
Okstod, Edgil Andreas, 194
Older, Patsy, 106, 140, 174, 175
Oliver, Gilbert Victor, 100, 185
Oliver, Joanne, 107, 109, 177
Olsen, Barbara, 194
ORCHESTRA, 93
Osburn, Alice Lorene, 179
Osburn, Beverly Jane, 175

P Paddock, Patrick W., 181
Palmer, Donna L., 175
Palmer, Patricia McCord, 105, 169, 173
PANHELLENIC COUNCIL, 169
Parker, Jodelle, 181, 194
Parson, David A., 181
Patterson, Ruth, 179
Payne, Howard W., 181
Pearson, Dale, 194
Pearson, Ray Leon, 69, 191
Pearson, Robert, 69, 194
Peeler, J. Malcolm, 194
PEPCATS, 105
Perkins, Esther, 194
Perلمان, David, 103, 181
Person, Catherine, 101, 106, 113, 177
PERSONNEL, 32
Peters, Herman, 194
Peterson, John R., 182
Peterson, Laurie, 187
Petzoldt, Richard L., 77, 103, 191
Petzoldt, Robert Dee, 185
Peyton, Gene Cecil, 103, 183, 188, 189
Peyton, James William, 55, 185
PHI DELTA PHI, 104
PHI DELTA THETA, 186
PHI ETA SIGMA, 98
PHILOSOPHY, 64
PHI ZETA CHRISTO, 113
PHYSICAL EDUCATION, 62
PHYSICAL SCIENCE, 65
PHYSICS, 67
Phillips, Don Edward, 187
Phillips, Mary Ellen, 76, 88, 99, 105, 171
Phillips, Mary Jane, 175
Phillips, Nancy, 61, 74, 109, 175
Phillips, Sally, 105, 175
Phipps, Phil L., 67, 189, 194
PI BETA PHI, 176
Pickles, Tom H., 83, 191
Pierson, Dale W., 46, 104
Pilling, William S., 47, 104, 194
Pinkerton, Jane C., 171
Pinky, Jack William, 187
Piper, John, 187
Poindexter, David, 64, 109, 182
Poindexter, Eugene, 191, 191
Polales, Mary G., 175
POLITICAL SCIENCE, 58
Politte, Marie Lou, 179
Pomerio, Patricia, 179
Porter, Alyce, 179
Porter, George, 76, 98, 99, 103, 113, 191
Potter, Ervin W., 47, 194
Potter, Norman D., 194
Powell, Margaret, 43, 100, 101, 169, 170, 171
Pratt, Nancy Jean, 105, 175
Prediletto, Louis, 103, 187
Price, Ruth, 173
Proctor, Diane, 49, 87, 169, 177
Pritchett, Larry, 82, 155, 189
Pruner, Priscilla, 179
PSYCHOLOGY, 69
PSYCHOLOGY CLUB, 109
PUBLICATIONS BOARD, 79
PUBLICATIONS DEPT., 82
Puckett, Prentiss, 194
Puchett, Ken, 104

Q Quamme, Marilyn, 169, 175
Quin, David Joe, 53, 199

R RALLY SQUAD
Randolph, Irene Ann, 177
Rands, Beverly Ann, 105, 177
Rankin, Jean, 105, 177
Ranton, Loren W., 187
Ratcliff, Mary Lou, 105, 171
Rautenkranz, Joyce, 113, 194
Rautenkranz, Richard, 69, 194
Recher, Edith Grace, 61, 109, 179

Everything in Hardware



- ★ GLIDDEN PAINTS
- ★ BUILDING HARDWARE
- ★ HOUSEWARE
- ★ SPORTING GOODS

SALEM HARDWARE CO.

120 North Commercial - Telephone 3-4906

STATE FINANCE CO.

167 S. High Street
Phones 3-4121-3-4122
Salem, Oregon

FHA and Conventional Mortgage Loans
Real Estate and Insurance
Personal and Auto Loans



Lic. S-216-M-222

The best place to buy

THE BEST CANDY

GAY'S CANDY

135 NORTH HIGH Telephone 2-9235
SALEM

Your Sportswear Headquarters

JAYSON'S

"SMART CLOTHES FOR SMART MEN"

198 N. LIBERTY Phone 3-3400
Salem, Oregon

STAN BAKER MOTORS

DODGE and PLYMOUTH
CARS and TRUCKS

Phone 2-2468
525 Chemeketa Street
SALEM

UNIVERSITY MEN'S
QUALITY FURNISHINGS. . .

- Arrow Shirts
- Interwoven Hose
- Lord Jeff Sweaters

ALEX JONES
121 North High Street • SALEM

*See your local sport specialists for the most complete
stock of quality sporting goods*

HOWARD WICKLUND
SPORTING GOODS, INC.

372 State Street • Salem, Oregon • Phone 3-6042

Howard Corset Shop

FOUNDATION GARMENTS

Special Attention Given to Fittings

Hosiery—Lingerie—Dresses—Smocks

131 North High St.

Phone 3-4032



ROEN TYPEWRITER
EXCHANGE

456 Court Street

just sold me a NEW . . .

Smith-Corona
PORTABLE TYPEWRITER

CONGRATULATIONS!

. . . TO THE WALLULAH STAFF AND TO
WILLAMETTE UNIVERSITY FOR A SPLENDID
YEAR BOOK. CONGRATULATIONS ALSO TO THE
VICTORIOUS BEARCAT BASKETBALL TEAM.

REMEMBER IT PAYS TO SHOP . . .

AT PENNEY'S



INDEX

Reimann, Richard Lee, 194
RELIGION, 64
Remelmeyer, Barbara, 134, 169, 177
Renner, George, 112, 194
Rentfrow, Ronald D., 194
Reville, Don, 61, 109, 194
Revis, Kathleen, 112, 179
Reynolds, Dale A. Viner, 51, 181
Reynolds, Ellen Marie, 49, 74, 171
Reynolds, Franklin G., 194
Richartz, Walter, 102, 181
Rice, Jeanne, 101, 175
Richardson, Jo Ann, 76, 108, 177
Riebe, Frank D., 100, 189
Ringle, Phil, 76, 99, 113, 117, 191
Riordan, Bob, 194
Riveness, Armand Lee, 98, 194
Robertson, Joyce, 105, 113, 177
Robins, Robert Edwin, 43, 189
Robinson, Charles C., 101, 191
Robinson, Maria Jane Thurston, 175
Roble, Henry, 194
Rockenfeller, John David, 194
Roeder, Betty, 179
Rogers, Bruce, 185
Rogers, Pat, 179
Rogers, Janet, 177
Rolfness, Gerald Arthur, 187
Ross, William M., 55, 74, 171
Roth, Irvin, 103, 184
Rowland, M. June, 109, 194
Royer, Betty L., 105, 171
Ruff, Gordon VanDien, 181
Ruff, Richard, 103, 171
Russell, Paul J., 108, 194
Ryman, Richard Lewis

S Satter, Richard Edward, 194
Sawyer, Loren L., 185
Sayre, Marian, 64
Scarborough, Don, 85, 99, 189
Schaefer, Robert, 75, 187
Scheidel, Thomas Maynard, 89, 99, 191
Schmidt, Karl D., 185
Schroeder, Richard C., 194
Schulze, Merlin, 191
Scott, Jim E., 182
Scott, Richard T., 82, 194
Scrivens, Lou, 118, 149, 151
Seamster, Robert Allen, 103, 185
Sebern, Donna, 194
Sedler, Glen E., 104, 194
SENIORS, 74
Seriwuns, Lon, 194
Shangle, Robert D., 103, 188, 189
Shangle, Verne G., 103, 194
Shaw, Philip Alan, 182
Shaw, Stuart R., 181
Shepherd, Jean, 175
Shields, Duane W., 187
Shipley, Suzanne, 98, 99, 107, 113, 175
SIGMA ALPHA CHI, 99
SIGMA ALPHA EPSILON, 188
SIGMA CHI, 190
Silke, Eugene Harold, 77, 155, 185
Simmons, James W., 194
Simons, Gay, 101, 194
Simpson, Betty Jean, 177
Sims, Billy Milton, 104, 194
Sittser, Byron A., 187
Skimas, John, 103, 189
Skirwin, Bob, 55, 133, 155, 187
Sleeper, LaVaughn, 130, 158, 179
Slocum, Julius R., 47, 104, 194
Small, Robert Lunt, 108, 124, 191
Smedley, Norvada, 42, 101, 173
Smith, Charles Robert, 194
Smith, Ferol, 105, 177
Smith, Greg, 189
Smith, Larry, 75, 103, 149, 150, 151, 187
Smith, Margaret, 177
Smith, Margaret Frances, 179
Smith, Robert Eugene, 47, 104, 194
Smith, Robert E., 191
Snarr, Carolann, 75, 107, 177
Snyder, Wally, 75, 191
SOCIAL ACTIVITIES BOARD, 80
SOCIOLOGY, 59
SOPHOMORES, 76
Sparks, Marion, 52, 100, 101, 106, 113, 175
SPEECH, 52
Spellbrink, Dolores, 107, 171
Spencer, Gloria G., 177
Stackhouse, Ann, 173
Staehr, Philip, 58, 181
Standifer, Larry, 77, 185
Stanton, Patricia Ann, 175
Stanton, Ward, 100, 189
Stark, Janet Isabelle, 51, 79, 86, 177
Staufacher, Walter A., 63, 194
Staufner, Wesley H., 103, 107, 109, 181
Staveland, Edna, 179
Subia, Thomas C., 194
Summers, Harry E., 187
Sutich, Rado, 189
Swan, Dorland E., 194
Swanson, (Betty) Anne, 175



Established 1901

Phone 3-4424

FITTS MARKET
FISH, CLAMS, OYSTERS, POULTRY
216 North Commercial Street
SALEM, OREGON



SALEM NEWS AGENCY
WHOLESALE
695 N. HIGH



"Home Made Bakery Goods"

HOLLAND BAKERY

Mr. and Mrs. C. C. Hoxie, owners
DANISH PASTRY • CAKES
PIES • FOUNTAIN • SANDWICHES
110 N. Commercial - SALEM - Phone 3-3454

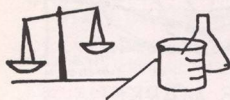
Gold Arrow Restaurant

CHICKEN AND STEAKS
NOON LUNCH

1590 Fairground Rd.

Phone 3-8868

Salem, Oregon



QUALITY
ALWAYS
WINS
• • •

CAPITAL DRUG STORE

405 STATE AT LIBERTY

COMPLIMENTS
OF

Meier & Frank Co.

FIFTH, SIXTH, MORRISON AND AIDER. Broadway 4411
PORTLAND'S OWN STORE ★ SINCE 1857

HOTEL MARION

Salem, Oregon

Most Modern 124-Room Hotel in the West

COFFEE SHOP

Banquet Rooms :: Cocktail Lounge

G. Clerico, Gen. Mgr.

Schreder Four Star Market

Satisfaction Guaranteed

GROCERIES

MEATS

FRUITS

VEGETABLES

State and Commercial Streets

RADIOS

General Electric
Crosley
Motor-ola
Philco Car Radios

RECORDS

Mitchell's

"YOUR SERVICE DEALER"

Phone 3-7577

APPLIANCES

Refrigerators
Water Heaters
Ranges
Washers

1880 State Street
Salem, Oregon

Salem's Morning Daily

The Oregon STATESMAN

FRIENDLY NEIGHBOR TO WILLAMETTE
UNIVERSITY FOR OVER
A CENTURY

Scellers, Foley & Rising, Inc.

"A Progressive Insurance Office"

Let us keep your insurance in harmony

143 South Liberty Street Salem, Oregon
Phone 2-4143

INDEX

Swartz, Jack H., 194
Sweeny, Michael, 112, 194
Switzer, James R., 189
Swoboda, Shirley Marie, 105, 173

T Takayama, Helen, 67, 194
Tarem, Astrid, 113, 194
Taylor, Bob, 103, 187
Taylor, Evelyn, 173, 194
Taylor, Joyce, 173
TENNIS, 22
Teler, Gordon Eber, 104
THETA ALPHA PHI, 101
Thomson, Scott Dayton, 57, 87, 103, 187
Thurman, Walter Robert, 194
Timms, Gene Dale, 191
Todd, Charles K., 107, 181
Todd, Leona E., 105, 113, 171
Tonning, Dorothy Olga, 194
Tonning, Ove, 184
TOWN STUDENTS, 192
TRACK, 20, 160
Trinklein, Delton Charles, 67, 194
Turner, Jane M., 67
Turner, Patricia Ann, 195
Turner, Pua, 179

U Uecker, Lloyd, 195
Ulrich, Bob, 189
Ulvin, Henry A., 47, 195
UNESCO, 114
UNIVERSITY WORKSHOP, 90
Upton, Dwight, 187
Unruh, Dick, 187

V Vanderwal, John Warren, 195
Van Horn, Bill J., 103, 191
Vincent, Joan, 171
Vincent, Marlene, 175
Von Eschen, Ellis, 23, 185
Vosper, Ernestine, 171

W Warner, George, 57, 181
Wall, Robert C., 104, 195
Wallace, B. J., 195
WALLULAH, 86
Walker, Follie, 113, 179
Walser, Betty, 175
Walters, Eugene, 185
Ward, Conley E., 184
Ward, Weldon, 181
Warren, Robert, 63, 103, 195
Watkins, Keith, 181
Watson, Bob, 195
Weber, Erwin Andrew, 195
Weber, Betty, 177
Weber, Joyce Alice, 195
Weeks, Gaylord, 112, 155, 191
Weinstein, Esther, 58, 185
Weisser, John, 187
Welch, William, 51, 195
Wernmager, Roger, 187
WESLEY FELLOWSHIP, 110
WESTMINSTER FELLOWSHIP, 113
Wheeler, Edith, 58, 175
Wheeler, Richard Leon, 181
White, Bob, 63, 103, 189
White, Marlene, 105, 155, 175
Wiens, Lee, 185
Wiggenton, Mary Jo, 66, 177
Wilcox, Allen, 49, 195
Wilcox, M. James, 181
Wildey, Greta Ann, 179
Wilhelm, Alice, 171
Withoit, Rose Marie, 175
Wilkins, Dick, 187
Will, Mary Margaret, 63, 195
Wileut, Benton Robert, 181
Wilson, Arthur Nash, 82, 185
Wilson, Betty Jean, 195
Wilson, Don, 195
Wilson, George D., 47, 104, 195
Wilson, Henry Allen, 189
Wilson, Howard LeRoy, 195
Wilson, Jack, 108, 191
Wilson, James D., 195
Wilson, Robert, 191
Winerman, Neal, 187
Winshop, Frank, 181
Wiper, Robert, 57, 185
Wiper, Wilene, 185
Witham, Robert, 101, 106, 112, 191
Wittenberg, William, 23, 191
Wood, Jim Allen, 89, 189
Woodard, Wesley Sue, 57, 107, 169, 173
WOMEN'S SPORTS, 25

Y York, Edwin Albert, 47
Young, Jean, 179
Young, Pearl, 169
Younglove, Albert Norton, 58, 74, 185
YOUNG REPUBLICANS, 108
Yung, Vance, 195
Yusha, Alex, 195
Y.W.C.A., 107

Z Zabare, Patricia Jane, 53, 88, 173
Zeuske, Vernon Edward, 77, 189
Zosel, Patricia Jane, 61



METROPOLITAN STORES, INC.
136 North Commercial — Salem, Oregon

WATCH THE
WILLAMETTE TEAMS
for the
BEST IN SPORTS
For the
BEST IN BUYS
WATCH

Pioneer Trust Company

Incorporated Under State Banking Laws of Oregon

PIONEER TRUST BUILDING

*

TRUST SERVICE in all its phases, including administration of estates, guardianships, insurance trusts, individual and corporate trusts, property management, escrows, custodianship, agencies and mortgage loans on farm, residence and business property.

*

Safe Deposit Boxes . . . Complete Insurance Service

OFFICERS and DIRECTORS

A. N. Bush H. V. Compton Karl E. Wenger

KEITH BROWN LUMBER YARD

• • •

**Building Materials, Millwork,
Hardware, Tools, Paints, Appliances
Floor Coverings and Housewares.**

that convenient location
FRONT AND COURT STREETS



Packard

STATE MOTORS, INC.

340 North High Street
SALEM, OREGON

E. O. WELLING
President

Telephone 3-4436 and 3-5663

General Finance Corporation

A COMPLETE LOAN AND INSURANCE
SERVICE FOR YOUR EVERY NEED —

JAS. B. HALEY, MGR.
136 So. Commercial St.
Phone 3-9161

MEL C. BOWCUT, ASST. MGR.
Salem, Oregon
License S-138 and M-338



HAIL BEARCATS Northwest Conference Co-Champions 1951

Left to Right: Robinson, Loder, Brown, L. Smith, Nordhill, Bellinger, Girod, Coach Lewis, Benshoof, Scrivens, Brouwer, Hande, Montag, B. Smith, Logue. Front: Manager Reibe, Manager Bolliger.

CAPITAL SHOPPING CENTER

"THE FRIENDLIEST STORES IN TOWN"

BERGS BORING OPTICAL DANA'S BOOTERY HALEY'S BEAUTY CENTER HUGHES JARY FLORIST
KENNEDY CLEANERS S. H. KRESS CO. MARGWEN'S CHILDREN'S WEAR OWL DRUG
SHRYOCK'S MEN'S WEAR SEARS ROEBUCK & CO. THE TOWNE SHOP

SALEM LAUNDRY CO.

(WEIDER'S)

LAUNDRY — DRY CLEANING

Phone 3-9125

263 South High

HOTEL SENATOR

SALEM, OREGON

Salem's New and Most Modern Hotel

Coffee Shop and Dining Room

Banquet and Meeting Rooms

Garage in Building

W. W. Chadwick, President

Date Due

