

GOVERNOR CROWNS QUEEN TODAY

LITCHFIELD ELECTED STUDENT PRESIDENT

Reeve Betts and Beatrice Lockhart Victors in Second Election Contest

SMULLEN EDITS COLLEGIAN

Jean White Selected for Post of Vice-president; Poor is Wallulah Editor

In the second A. S. W. U. pole, Wednesday, necessitated by a lack of a majority for two offices in the election held last Friday, Reeve Betts was finally elected to the office of second vice-president and Beatrice Lockhart, to the office of secretary.

For the coming year, the Associated Student Body of Willamette University will be headed by Kenneth Litchfield, as president. Litchfield, a student from the law school, has been prominent in campus activities. He is a letterman in tennis and basketball, is president of the Blue Key National Honorary service fraternity, and a member of Delta Theta Phi, legal honorary fraternity.

Jean White, as first vice-president, will have charge of the social interests of the campus, for which position she is ably fitted. Miss White now holds the position of social chairman of the Y. W. for the coming year, and in the event of forming of an organization similar to Associated Women Students, would become the head of that body.

Reeve Betts, the new second vice-president as a result of the second election for a majority, who is now leading man in the Junior play to be given tonight, can, as an active man on the campus, well take care of this office.

After a second election, Beatrice Lockhart, who has worked on the staffs of the Collegian and the Wallulah and served on the cabinet of the Y. W. will take over the secretarial duties for the student body.

The new Collegian editor, William Smullen, has been active on the staff of that publication for three years. He holds the position of business manager this year. The work of the campus newspaper is familiar to him and he will be well fitted to take over the editorship.

The present managing editor of the Collegian, George Poor, received the vote for Wallulah editor. Mr. Poor has been a member of the Collegian staff for two years. He is well acquainted with journalistic activities.

The A. S. W. U. election this year was close for the offices of second vice-president and secretary. Both the Collegian and the Wallulah editors were elected by a large majority. The office of A. S. W. U. president was uncontested.

FAREWELL WILLAMETTE WILL BE SUNG BY WRIGHT

Seniors Vote Honor of Singing Senior Song at Commencement Exercises

William Wright has been selected to sing "Farewell Willamette" by the vote of the senior class in their regular meeting last Wednesday. Mr. Wright will sing this song at the annual senior chapel and at the commencement exercises.

Mr. Wright is a major in education. He was assistant director of the men's glee club as well as being one of the soloists. Two years ago he sang second tenor on the varsity quartet. He is a member of the Bee-thoven society.

GREETINGS

On behalf of the students of Willamette University, we extend a cordial welcome to the visitors and alumni who have come to enjoy our twenty-second annual May Festival. We hope that our program of activities will afford you great pleasure, but our greatest desire is that you may feel the spirit of our Alma Mater and that the friendships formed on this occasion may prove lasting.

The Hospitality Committee, Willis Hathaway, Chairman.

Complete Program of Activities

Friday, May 4
10:00-12:00 a. m.—Registration of guests. Christo Cottage. The hospitality committee will be on hand to assist anyone who is not familiar with the campus.

Saturday, May 5
7:30-8:30—May morning breakfast served by Y. W. C. A.
9:30 a. m.—Musical concert in the chapel, Waller Hall.

Court Program
I. Address of Welcome, Charles Redding, President of the Associated Students.

II. Coronation of Queen Virginia Merle I by Governor I. L. Patterson.

III. Vocal Duet, Frances McGilvra and Margaret Arnold.

IV. May Dances—Spring, a solo dance by Margaret Morehouse.

V. May Pole—The theme for the dances are the seasons spring and summer. What takes place during this period is enacted by the dancers symbolically.

WILLAMETTE SONG BOOKS ON SALE FROM MANAGER

Collection of Songs is the Most Complete Ever Published on Campus

The latest issue of the Willamette song book is one of the most complete collections of school songs that has been published at Willamette. It contains seventy-nine songs which include the Freshman Glee songs up until 1927.

Wilburn Swafford, song book manager, states why the book is of value.

"If you are a senior, the Willamette song book will help you keep pleasant memories.

If you are an underclassman you should obtain the book for your own pleasure, to learn Willamette songs, or for a gift to a senior.

"If you are an alumnus this book of songs keeps you in touch with campus spirit and renews your memories of college days."

The song books will be on sale in the Student Body office at any time during the May week-end.

MAY MORNING BREAKFAST EVENT OF SATURDAY MORN

Freshman Girls Will Serve Breakfast For Guests and Students

Saturday morning will find the annual May morning breakfast at the old place of the campus near Christo cottage providing the weather is good. Otherwise it will be held in the cottage. The queen and her court will be guests of honor.

JUNIORS GIVE PLAY TONIGHT AT CAPITOL

The Passing of the Third Floor Back Gives Opportunity for Character Work

CURTAIN RISES AT 8:15

Reeve Betts as the Stranger Takes Lead in Difficult and Heavy Role

"Yes, Stasia, there are fine thoughts and fine feelings in the world, but such things are only for rich people."

Is that true? The answer is the Junior play, "The Passing of the Third Floor Back" which is to be presented at the Capitol Theatre this evening at 8:15 o'clock.

Vivian utters these words after she has decided to marry the man, who can give her all that money can buy, instead of marrying the poor young artist she loves.

Vivian is only one of many who live in a dingy, squalid boarding house in Bloomsbury street, London. Stasia is the slatternly, pitiful questioning maid of all work just out of the reform school.

The boarding house is the home of a gossiping, thieving, cheating, lying group of people.

Louise Lere is Mrs. Sharpe the lodging house keeper, is continually brow-beating her servant, Stasia, who is Esther Lisle.

There is also the old maid Miss Kite, who tries to look kittenish and is a veritable cat. This part is portrayed by Alice Lane.

Vivian (Dorothy Peters) is persuaded by old Joey Wright (Ivan White) to give up her lover Christopher who is Jack Minto.

Curtis Reid as Japs Samuels excellently portrays the part of an avuncular Jew, who with Bill Tweedie as Harry Larkom, his cohort, are trying to sell fake stock in a silver mine.

Mrs. DeHooley (Bernice Jackson) is a middle aged woman of the bourgeois who has aristocratic inclinations.

The roles of retired Major Thompson and his wife who fight "like cat and dog from morn till night" are played by Raymond Derrick and Georgia Fairbanks.

Into these sordid surroundings comes the stranger to rent "the third floor back". He brings with him the gentleness, the wisdom, and the beauty of Christ, and through his influence a great change takes place in the lodging house. This difficult and leading part is admirably taken by Reeve Betts.

The play is one of Jerome K. Jerome's finest and has been completely modernized to suit present circumstances.

No complete change of scene is necessary, and consequently very little time will be wasted waiting between acts.

Elsie Tucker, Elma White, Carol Pratt, and Charles Kaufman have charge of the wardrobe.

Clarence Emmons is play manager, and Everett Fisher stage manager. The cast has been working hard for several weeks under the direction of Marjorie Walker of Ellsion and White conservatory, Portland, with the able assistance of Dr. R. M. Gatte.

Tickets may be bought from any of the cast, property men or wardrobe managers.

MAY QUEEN WILL TEACH AT CHENEY, WASHINGTON

Queen Virginia Merle Does not Allow Royal Duties to Interfere with Work

Some might consider it an imposition on the prerogatives and privileges of the May Day sovereign for her to have to consider during her reign the possibility of working at some future time. However, in this democratic institution and land such is not the case. Queen Virginia Merle has just announced that she will preside over history classes in the high school of Cheney, Washington, during the coming school year.

This is thoroughly in accord with the precedent set by many preceding May Queens who after their graduation have gone out and become successful teachers.

JUDGE HEWETT GIVES COMMENCEMENT TALK

Trustees Vote Honorary Degree for Judge Henry H. Hewett of Albany

HONORS FORMER LAW DEAN

Judge Ramsey of McMinnville Will be Given LL. D. Degree at Commencement

According to an announcement made by President Carl Gregg Doney just previous to his departure for Kansas City to attend the Methodist general conference the commencement address for the class of 1928 will be delivered by Judge Henry H. Hewett of Albany.

Also the honorary degree of doctor of laws will be conferred on Judge Hewett. This honor was voted by the executive committee of the board of trustees at their last meeting. Judge Hewett was graduated from the liberal arts school of Willamette with the class of 1876. In addition to his bachelor's degree he was given his M. A. in 1882. He taught in Linfield and Albany College. Judge Hewett was admitted to the bar in 1877 and served as district attorney and circuit judge in the third judicial district. After serving for the five years between 1894 and 1899 as judge he retired to the private practice of law.

At the same meeting of the trustees the honorary doctor of laws degree was voted for Judge William Ramsey of McMinnville. Judge Ramsey was the man selected by President Thomas VanSoy of Willamette University to start the law school. He served as a teacher and dean in the law school for a number of years. He has served in various public offices such as district attorney and circuit judge.

WESLEYANS PLAN PROGRAM OF NEXT THREE SESSIONS

James Rettie Will Review "The Christ of the Round Table" Next Wednesday

At their regular noon luncheon on last Wednesday the Wesleyans devoted their time to the planning of the programs for the coming meetings. The plans for the next three luncheon sessions is as follows:

On May 9 James Rettie will give a book review on the "Christ of the Round Table" by G. Stanley Jones. This book is written by a missionary in India who is also the author of "The Christ of the Indian Road", a book which has been widely read and much discussed.

On May 15 the Wesleyans will consider the topic of "The Daily Vacation Bible School". The organization and workings of this summer service of the churches will be discussed from all sides.

On May 22, "Playground and Camp Work" will be the subject. Some person who has had experience in this form of public service will present the subject.

CUBS ELECT RAY MILLER LEADER FOR COMING YEAR

Former President of Freshman Class Heads Campus Service Organization

Raymond Miller has been elected president of the Willamette Cubs for the coming year. The other officers are: Vice-president, Van Bateson; secretary, Edward Wells; treasurer, Ralph Schomp.

Mr. Miller is well qualified as an executive through his work as president of the Freshman class and his participation in other campus activities. The other men elected have also been prominent in class and club activities.

STUDENT LUNCH SERVED TO ALL MAY DAY GUESTS

Florence Emmons Announces That Plans for Event Have all Been Completed

Florence Emmons, manager of the student lunch, states that all plans for the noon luncheon at noon today are complete. It will be served cafeteria style, near Christo cottage.

All the Willamette students, Salem High School seniors, alumni, and guests will be provided with a ticket for this affair.

REIGN OVER WILLAMETTE



Queen Virginia Merle Crites, who will receive crown today, and her attendants, Phoebe Smith, left; and Genevieve Junk, right.

WILLAMETTE MAY DAY FIRST HELD IN 1907

Event Has Gone Through Natural Evolution with Growth of Institution

May Day at Willamette is somewhat like Topsy, it "just grew". Every year it has become a bit more artistic and elaborate. In 1907 when most of the present campus strollers were interested chiefly in rattles or leeching rings, Phoebe Olsen was crowned first May Queen of Willamette University. According to remembrances this initial festival was very pretty but simple. It included the coronation of the queen and a few little dances which Professor Matthews terms "simple little toys".

In the first years any girl might run for queen although Juniors or Seniors were nearly always elected.

In 1911 old Jupiter played havoc with all outdoor plans except the May Morning Breakfast, and the crowning of the queen had to take place in the chapel. According to the Collegian of that date the queen, king and attendants made a "stately procession", and they were duly crowned after which both "right royally addressed their subjects".

The pictures from that festival display an abundance of starched ruffles, high waists and billows, elaborately combed long hair.

The Y. W. C. A. Breakfast came first; the coronation followed at 10:30; the class faros and tug of war followed in the afternoon and the Junior play was put on in the evening.

By 1913 more folk dances had been added, and by 1921 the program was practically like that of the last few years in outline.

There are two parts of the festival that have been common to every May Day. The first is the May Pole Dance which, although it has changed in costume and in gender, has been a part of every program. The latter is a week of feverish interest and preparation before and during May Day. Even in 1924, we find an editorial headed with the sentence "We can't think and we can't study for May Day is only one week away".

FORMER STUDENTS ELECT PHI BETA KAPPA MEMBERS

Herbert Deal and Kathryn Kirk Honored by U. of O. Scholastic Fraternity

Included among the 25 seniors elected to Phi Beta Kappa, national honorary scholastic fraternity, from the University of Oregon are included Herbert L. Deal and Kathryn Kirk, who are former students of Willamette. Kathryn Kirk attended Willamette for two years and was Wallulah editor alert at the time she changed her registration to the University of Oregon. Herbert Deal attended Gooding college and Willamette before entering the University of Oregon.

FESTIVITIES OPENED BY STATE EXECUTIVE

Queen Virginia Reigns Over Willamette During Annual Festival

PREPARATIONS COMPLETE

May Dances Featuring the Theme of the Seasons Given Royal Throne

Following her coronation this afternoon by Governor I. L. Patterson, Queen Virginia Merle will officially begin her reign over the twenty-second annual Willamette May Festival. The queen will be assisted on all occasions by her maids of honor Phoebe Smith and Genevieve Junk.

The final last minute touches on the preparation to the queen's hour have been completed by a committee under the direction of Dorothy Ellis. Other work in anticipation of the event was done this morning by the underclassmen who were given a holiday from school work in order that they might work as well as enjoy a relief from the usual program of study.

The royal party will be preceded in its entry into the queen's court this afternoon by heralds, Ronald Craven, Wendell Robinson, Willis Hathaway, and Walter Kaufman who will sing "Make Way for the Queen". The quartet will be followed by David Smith Jr. who will act as crown bearer and by two flower girls in the persons of Suzanna Schram and Valrie Karr.

The pages, Robert Findley, and Richard Stevens, will carry the train of the queen.

Following the queen will come an escort of the girls from the senior class. These girls will sit on the steps of the platform and with their white dresses and armfuls of flowers lend color to the occasion.

The official address of welcome will be given by Charles Redding, president of the associated students.

Governor Patterson will place the crown, the symbol of the queenly dignity, upon the head of Queen Virginia Merle. This duty has previously been performed by the president of the university but because of his absence Governor Patterson consented to perform the ceremony.

Following the coronation Margaret Arnold and Frances McGilvra will sing a vocal duet, "O That We Two Were Maying," by Smith.

The May dances given in honor of the queen will follow the theme of the seasons. Beginning with the announcement of Spring by Pan, represented by Margaret Morehouse, will come dances by different groups representing birds, crocuses, buds, rain, blossoms, sunshine, butterflies, Mary Allen and Florence Power impersonating Pierrot and Pierrette will give

(Continued on page 6)

FRESH STUNT COMMITTEE HAS MANY ENGAGEMENTS

Ralph Schomp Heads Freshman Planning Features for May Day Entertainment

The stunt committee for the Freshman class this year is under the direction of Ralph Schomp who will have charge of the staging of at least three events on the May Day program. Between one of the acts of the Junior play this evening there will be presented a negro skit. Also the freshmen are responsible for at least one feature of Willamette night at the Elshoro on Saturday. These stunts are in addition to the traditional green cap demonstration.

Those working on this committee of the freshman class are Don Middleton, Everett Patton, Carleton Gaines, Raymond Miller, Collas Marsters, Raymond Haldeane, and Charles Depoe.

BETTS SIG PRESIDENT FOR COMING SEMESTER

Kenneth Mort Will Manage Fraternity; Mumford Picked as Secretary

The Sigma Tau fraternity elected their officers for the coming year at their regular fraternity meeting held last evening. Reeve Betts was elected to the presidency of the organization. Other officers selected were Bruce Spaulding, first vice-president; Garnee Cranor, second vice-president; Kenneth Mort, manager; William Mumford secretary; and Collas Marsters and Stanley Trefren members of the social committee.

Official publication of the Associated Student Body of Willamette University

# Willamette Collegian

HUGH MCGILVRA  
Editor, Phone 1074

WILLIAM B. SMULLIN  
Business Mgr. Phone 1401

### EDITORIAL STAFF

|                       |                   |
|-----------------------|-------------------|
| Associate Editor..... | ELLA HOWARD       |
| Managing Editor.....  | GEORGE POOR       |
| Exchange Editor.....  | CAMILLA GATES     |
| Society Editor.....   | MARY CLANFIELD    |
| Literary Editor.....  | DOROTHY ELLIS     |
| Music Editor.....     | MARGARET BROWN    |
| Foreign Editor.....   | MARGARET PRO      |
| Knoball Editor.....   | EVERETT GARDNER   |
| News Editor.....      | GEORGIA PATRICKS  |
| Sports Editor.....    | BEATRICE LOCKHART |
|                       | ROBERT MCGILVRA   |

### REPORTERS

BROWN, KAUFMAN, BECKETT, WARREN, CURRY, MERGLER, KESDAL, DEE, FENBACH, HOLLEBERG, ACKERMAN, WOODWORTH, CRITES, S. POOR.

### MANAGERIAL STAFF

|                            |                   |
|----------------------------|-------------------|
| Advertising Manager.....   | FRANK LOMBARD     |
| Assistant.....             | BEATRICE HARTUNG  |
| Circulation Manager.....   | GLADYS YOUNG      |
| Circulation Assistant..... | HESTINE HOLLISTER |
| Collectors.....            | HOWER ROBERTS     |

ASSISTANTS:  
BEATRICE LOCKHART, JEAN WHITE, EMILY BROWN, RAYMOND MILLER, PHILIP RETRUM, SAMUEL BOWE, VAN HATSON.

Member of the Pacific Intercollegiate Press Association.  
Entered at the Postoffice at Salem, Oregon, for transmission through the mails as second-class matter.

### COLLEGIATE BABBITS

Sinclair Lewis originated and made popular the title of Babbit as applied to the hard headed business man, who was hard headed in at least two possible senses of the term. Although no one with a gift for satire has seen fit to waste enough good paper and ink to write a novel on the college Babbitts, there is no lack of subject matter.

The college Babbit like his older brother, using his own language, does not yet know what it is all about. In a futile attempt to get into the swim he is caught in the maelstrom of the noisy and often useless manifestations of college spirit and patriotism. He becomes the rah rah boy who wears with unpardonable pride the latest collegiate fads created by ingenious clothiers who never heard of Joseph and his coat of many colors which got him in bad with all of his fellows.

The college Babbit is also a "joiner." Anything which means another organization and offers the possibility of acquiring another little tin god to wear on his vest and satisfy his vanity is acceptable to the indiscriminating Babbit.

Committees are the delight of this person who revels in feeling that he is always busy and has never completely caught up with himself. He is perfectly willing to work on a dozen or so committees, of about the importance of filling the water glasses for the debating team, when if he were to devote his energies to one activity he might be able to be the one for whom the water glasses were filled.

Babbitt is not due for any sudden death. There are too many college students going out each year to fill the ranks of those who have gone to meet with some committee in a place where we hope that there are no such things.

### SHALL WE STUDY?

Annually about 40,000 men are graduated from college halls into the ranks of business. For the most part business has in the past made its selections from this mass rather by some crude rule of the thumb than by any scientific method of selection. In order that they might have more knowledge on the matter the American Telephone and Telegraph Company conducted an investigation among their employees, the results of which are reported in the May issue of Harpers Magazine by Walter S. Gifford, president, president of the corporation.

Scholastic standings are the most readily available records in regard to college students and salaries are the easiest obtainable means for measuring business success. Taking these two things into consideration, it was found that they are very closely related. Summing up the results of the investigation, Mr. Gifford concludes that the longer the best students are in business, the more rapidly their earnings rise and that the longer the poorer students are in business, the slower their earnings rise. College scholarship and business success would appear from this one study to be inseparable.

This is brought forward not to try to commercialize scholarship, not to place a material evaluation upon it. Scholarship has other satisfactions all its own. Salaries of course are not the only means whereby to judge success. However, the result of this study is only one of the many answers to the questions, "Shall we study?"

### THE PASSING OF A ROMANTIC LANDMARK

The old mill stream always sounds well in a song, especially when the words come from the throat of one who has a good and trained voice. Even the last requirement is not always a necessity for those who do not allow their critical sense to prevent the satisfaction of their instinct for the romantic. That the majority of people belong to the latter class is particularly fortunate because there are only exceptional cases when romantic ideals are able to be perfectly satisfied.

However, we do believe that one improvement could be made in the romantic environment of this campus; even though of course many do not believe any encouragement is necessary. The suggested reform is that the bridge over the mill stream might be restored to its original condition with its decorative railing. This is not advocated in the interest of safety because it is extremely unlikely that anyone would drown if they were to fall off the bridge. Neither would such an improvement increase the strength of the foot bridge. For all practical purposes the addition of a railing would make very little appreciable difference.

However, for the assistance of those who might want to take a very artistic view of a bit of campus scenery and those who can see something worthwhile in something that serves something other than an exclusively practical need we suggest the restoration of the once ornamental railing.

### IN THE MONTH OF MAY

Almost every group has at least one gala day on which its members get together and forget for the time being their cares and responsibilities in order that they may return to their work later with renewed vigor and enthusiasm. Such occasions are usually the opportunity for the wholesome demonstration of group spirit and organization. These specially designed days are in most cases peculiarly expressive of the life and interests of those who take part in them.

May Day at Willamette University is one of these special days set aside for the high purpose of play. Those who would know of the life of the institution from all sides should avail themselves of the opportunity of this self-revealing moment.

To those who come to the campus as visitors we extend a hearty and sincere welcome and express the hope that you may come to know the true spirit and life of Willamette.

As we go to press it seems that we are not gambling when we thank the weather man for his contribution to the May Day festivities. Of course his contribution is not very important but the sunshine makes us feel especially benevolent.

Mock presidential conventions seem to be all the rage in the colleges of the United States. If you were to ask some people on the Willamette campus they would say that there are sufficient politicians here to run any convention.

Pacific College takes the prize among colleges for ingenuity in raising money. In order to get \$100,000 they are going to sell 100 tickets to a banquet at \$100 per cover.

## ELLA HOWARD HEADS PUBLICITY SERVICE

### Home Town Newspapers Receive Notice of Doings of Students in Willamette

Under the direction of Ella Howard the initial steps have been taken toward the establishment of a thorough publicity system for the university. Miss Howard has been doing this work for about two months and has been rewarded in her efforts by obtaining considerable news space for the university which it would have never before had.

One of the methods used in to exploit in home town newspapers all the activities of Willamette students coming from these towns. To facilitate this work a complete file is kept of all the home addresses of students. When anything of news value takes place concerning them the fact is immediately sent to the newspaper in the home town of this particular student.

Miss Howard has also handled a large part of the publicity for May Day and was largely responsible for the way in which recent student body election results were known in those localities which might be interested in the results.

### FORENSIC RECORD SHOWN BY SUMMARY OF SEASON

#### Both Men and Women's Teams Defeat Subject of Investments in Foreign Countries

During the past season Willamette University was represented in ten debates, three oratorical contests, and two extemporaneous contests. Almost all of the decisions were of the open forum type.

There were four women's debates on the question: Resolved that the U. S. should cease to be armed force capital invested in foreign countries except after a formal declaration of war.

On February 27, Evangeline Hall and Margaret Pro traveled to Linfield to meet the women of the school in a non-decision debate. Again on March 15 this same team met the men from Weber college, Utah, on the home platform. The women of College of the Pacific, California, came to the campus March 15 and met a team of Willamette women composed of Edith Starrett and Bernice Mulvey. On March 23d Evangeline Hall and Margaret Pro travelled to Tacoma where they were unanimously defeated by C. P. S. Esther Lyle, Bernice Mulvey, and Edith Starrett met Pacific University at Forest Grove in the final women's debate.

The subject for the men's debates was: Resolved that investments in foreign countries should be protected only by the government of the country in which they are made. Mr. Harland, freshman, Mr. Tooze, sophomore, Mr. Wit-

H. T. LOVE  
THE JEWELER  
Salem, Oregon

Roller Skating  
Dreamland Rink  
Tuesday - Friday

SOCIETY STATIONERY  
Printed or Processed  
Engraved

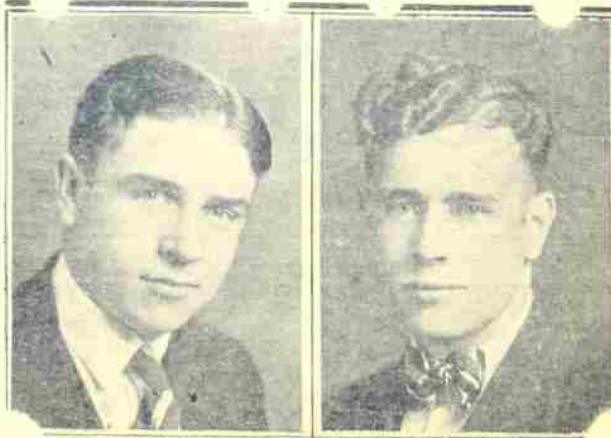


PHONE 1248  
Basement Bank of Commerce

## Welcome Visitors To the May Festival PADE'S GROCERY

Phone 649 1244 State

### IMPORTANT STUDENT OFFICERS



WILLIAM B. SMULLIN

KENNETH LITCHFIELD

As a result of a recent student body election Kenneth Litchfield will act as the president of the associated students for the next school year.

William B. Smullin as the result of the same election will assume the editorship of the Collegian, official publication of the associated students.

By senior, were the representatives for the men. The men lost their first debate with the men from Montana. They won their next debate with Utah Agricultural College. Their other debates were with Washington State College, University of Southern California, and South Western University.

Mr. Witty was the representative in all three oratorical contests. Mr. Redding participated in one extemporaneous contest and Margaret Pro in the other.

### ROBERT WITTY DELIVERS CONSTITUTIONAL ORATION

Well Known Debater and Orator Represents Willamette in Contest at Eugene

Robert Witty represents Willamette

University tonight in the state constitutional contest at Eugene, U. of O. and O. S. C. are the other participants. Should Mr. Witty win, he will go to Santa Clara to one of the seven regional contests in the United States. If he again receives first honors, he will be one of seven orators who will appear in the national constitutional contest at Los Angeles. The grand prize is \$500.

Mr. Witty placed second in the national peace contest last year, and also won second place in both the old line and state peace oratorical contests. Likewise, he is a debater of outstanding ability and a member of Tau Kappa Alpha, the national forensic fraternity.

Just because a man snores in his sleep he may not be a sound sleeper. Maybe he is an advocate of sheet music.

## MEN'S FURNISHINGS

NEW IDEAS!

Men's Shorts 85c - \$1.00 - \$1.50

Men's Vests 75c - \$1.00 - \$1.50

Fancy Hose 45c to \$1.00

Cheney Ties 51.00 - \$1.50

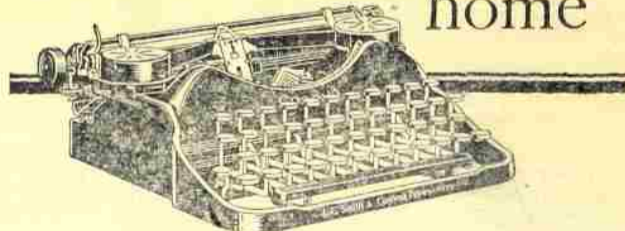
Dress Shirts \$1.50 to \$3.50

### AGENTS FOR MUNSINGWEAR



SALEM'S LEADING DEPARTMENT STORE

A small payment puts this new Corona in your home



It's great fun to own a Corona! Letter writing becomes a pleasure. You find yourself corresponding with old friends that you haven't thought of in years.

And a Corona in the house is a wonderful help to the children. It puts a new interest in their school work. Marks begin to go up.

Is it easy to learn to use a Corona? You'd be surprised! There isn't any trick to it. Just a matter of becoming familiar with the location of the letters on the keyboard and learning how to put the paper in, set the margin stops and return the carriage after you have written a line. We can show you all there is to learn in five minutes.

Terms? Certainly! A small down payment and the rest at the rate of a few dollars per month.

Call us on the phone and we will let you have a Corona for a few days on trial—with no obligation to buy.

### TYPEWRITER EXCHANGE

Phone 651

Thos. Roen

421 Court St.

### Y CABINET HAVE RETREAT TO MAKE PLANS OF GROUP

Leaders of Association Will Spend Day on Santiam in Group Meetings

The members of the Student Y. M. C. A. cabinet for the coming year will spend the day Sunday, May 13, somewhere on the Santiam river. They will leave Salem early in the morning. A number of meetings and services will be held during the day and most of the afternoon will be spent in making plans for next year's work under the various committees.

The cabinet members are: President, Harold Shellhart. Vice-President, Wesley Gordon. Secretary, Philip Retrum. Treasurer, Wilburn Swafford. Student Christian Service, Stephen Merger.

Bible Study, Lloyd Harder. Deputations, Paul Goides. Foreign Student Work, Antonio Dellinado.

Campus Service, Frank Girod. Finance, Wendell Kock. Publicity, Wesley Warren. Seabeck, Frank Van Dyke.

Raymond B. Culver, Executive Secretary of Student Y. M. C. A., C. A. Kells and James Rettle will make the trip.

### CAMPAIGN FOR SEABECK STARTED BY Y MANAGER

June 9 to 17 Dates for Mens' Conference; Important Men Will Lead Discussions

The Seabeck Student Conference this year will challenge the interest

of all active young men, according to Frank Van Dyke, the manager for the conference, who announces that the most capable speaker and discussion group leaders have been thoughtfully chosen.

Earl Henry is making a poster which will represent the Willamette delegation to Seabeck. This picture will carry out the idea of "The Spirit of Willamette" embodied in an aeroplane with Harold Shellhart as pilot, and James Rettle navigator, as each student decides to go to Seabeck he will get his reservation on the aeroplane.

The conference leaders are men who have had broad experience and are well able to lead and understand young people. The speakers, some of whom are known nationally and internationally, will lead the thought of the conference, bringing data from experience and the results of their own thinking on the great issues which are challenging the thought of the world today.

A never failing source of interest at Seabeck is the morning "Dippers" club. This select group is composed of those who fail to answer the reveille. The charter members are "Tiny" Woodworth, "Vermin" Taylor, and "Ocean Beach" Patton.

Just because a young man shadows a woman going down the street is no sign he's a detective—he may be carrying her umbrella.

If you look before you leap you'll probably spend your life looking.

A man running toward a depot may not be running for a train. He may be training for a run.

Helping You Keep Appearances Up by Keeping the Costs of Them Down!

### NEW TO SALEM BUT NOT NEW TO OREGON

## Brownsville Woolen Mills Store

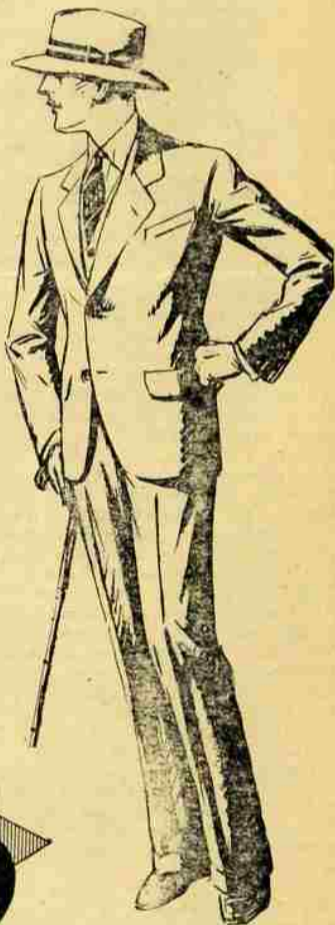
Have Clothed College Men for Nearly Sixty Years!

Today we are living in a modern age. An age when only the most efficient survive. Efficiency as we interpret the clothing business lies in producing the greatest value . . . and producing it consistently.

BROWNVILLE finds the ideal in quick turn over of their stocks at a small margin of profit. To acquire this method of operation they found it necessary to bring out the very best in STYLE, FIT and FABRIC at a price that would make an instant appeal.

College men are usually quick to accept the modern trend in business affairs. They readily understand the reasons for day in and day out clothing values.

Drop in and let us show you our specialty.



# \$25

## Brownsville Woolen Mills Store

WITH

# MILLER'S



### Flowers for Mother's Day

A choice selection in Cut Flowers and Potted Plants

Oscar D. "Frosty" Olsen

Court and High Sts. Phone 801

# SOCIETY

MARY CLANFIELD

### Coming Events

- May 3—Beta Chi Alpha Banquet. Beethoven Banquet.
- May 4—Junior Play.
- May 9—Theta Alpha Phi Banquet.
- May 11—Sophomore-Freshman Picnic.
- Classical Club Picnic.
- Forensic Festival.
- May 12—Alpha Phi Alpha Formal Party.
- Beta Chi Formal Party.
- Delta Phi Formal Party.
- May 18—Junior-Senior Banquet.
- May 19—Class Picnic.
- May 24—Theta Alpha Phi Play.
- May 25—Society Picnic.
- May 26—Geology Trip.
- Kappa Gamma Rho Picnic.
- June 1—Student Body Picnic.
- June 2—Alpha Phi Delta Picnic.
- Epsilon Delta Mu Picnic.
- Sigma Tau Picnic.
- June 8—Open.
- June 9—Class Day.
- Senior Breakfast.
- President's Reception.
- June 10—Baccalaureate Sermon.
- June 13—Commencement.
- Alumni Banquet.

### Kappa Gamma Rho Fraternity Has Ninth Annual Banquet

Saturday evening the Kappa Gamma Rho fraternity held its ninth annual banquet at the Hotel Marion. Covers were placed for 60 at the "U" shaped table in the main banquet room at the Marion. Lavender and pink tapers, entwined with sweet peas in the same pastel shades and fern, were arranged through the length of the table. At the speaker's table in the center, there was old brass candelabra holding pink and lavender tapers, and a long, low basket filled with flowers and ferns.

Programs bearing the fraternity crest disclosed the menu and program for the evening. The menu was as follows:

- Marion Delicious Cocktail
- Consomme Printinier Royal
- Celery Hearts Mixed Olives
- Salted Almonds
- Fresh Lobster a la Newberg en Caisse
- Shoe String Potatoes
- Orange Ice
- Roast Corned Turkey, Oyster Dressing
- Pear Butter
- Candied Sweet Potatoes
- Creamed New Asparagus
- Combination Salad
- Fresh Strawberry Sundae
- Roquefort Cheese
- Toasted Crackers
- Demi Tasse

Hugh McGillvra, president of the fraternity, served as toastmaster at the banquet which observed the eighth anniversary of the founding of the fraternity. Responses were made as follows:

- "Nine Years Ago", Victor D. Carlson
- "Initial Impressions", Joseph Felton
- "Birthdays", Frank Lombard
- "April Born", Carol Pratt
- "And One to Grow On", Earl Pemberton

Walter Kaufman sang two vocal selections accompanied by Kenneth McCormick. The program by the men singing their fraternity song, "Paths That Lead to Glory".

Guests were: Dr. and Mrs. Charles L. Sherman, Mr. and Mrs. Robert C. Notson, Mr. and Mrs. Warren Day, Mr. and Mrs. Donald Davis, Clarence Oliver, the Misses Louise Nunn, Rosalia Keber, Mildred Gilbert, Cora Oliver, Dorothy Williams, Alberta Bohrnstedt, Helen Moore, Norabel Pratt, Bonnie Weinheimer, Katherine Everett, Margaret Morehouse, Mary Louise Alken, Louise Findley, Eather King, Phyllis Day, Virginia Edwards, Louise Brown, Margaret Pro, Dorothy Gordon, Elinor Palmer, Edith Findley, Mary Clantfield, and Pauline Findley.

### Betrothal of Miss Gilbert and Mr. Bateson is Announced

The betrothal of Mildred Gilbert and Cornelius Bateson was announced at an informal party at which Mary Clantfield was hostess Saturday afternoon at the Alpha Phi Alpha house. The affair was in honor of Miss Gilbert who was a week-end guest in Salem.

The secret was revealed to the guests by small cards, which bore the names of Miss Gilbert and Mr. Bateson and which were concealed in the hearts of pink rosebuds.

Announcement of the engagement was also made Saturday evening at the formal banquet of the Kappa Gamma Rho fraternity at the Hotel Marion.

Miss Gilbert is the daughter of Mr. and Mrs. L. M. Gilbert of Salem. She attended Willamette University during her freshman and sophomore years and was a member of Alpha Phi Alpha. For the past year she has been a student at the University of Oregon and a member of Pi Beta Phi.

Mr. Bateson is the only son of Mrs. Katherine M. Culbertson of Portland. He attended Willamette University where he was affiliated with the Kappa Gamma Rho fraternity.

The date of the wedding has been set for June 30.

Guests at the announcement party were the honor guest, Miss Gilbert, Mrs. Carl Gregg Doney, Mrs. O. P. Hoff, Carolyn Lamberth, Georgia Fairbanks, Jean White, Genevieve Junk, Beatrice Lockhart, Louise Findley, Mabel Platt, Margaret Lewis, Donna Hildesheim, and Mary Clantfield.

### Annual Banquet of Beethoven To Be Held at Spa Tonight

The fourth annual banquet of the Beethoven society will be held at the Green Gate banquet room of the Spa, tonight at 5:30. The affair will honor Miss Lucille Ross, whose engagement was recently announced.

Miss Frances Virginia Melton is to be toastmistress and the responses will be:

- "Birth of Springtime" . . . . . Kenneth McCormick
- "Echoes of Song" . . . . . William Wright
- "Life's Nihil" . . . . . Betty Corski
- "Love's Prelude" . . . . . Iva Claire Love
- "Summer Rhapsody", Louise Findley

Those present will be: Misses Lucille Ross, Miss Frances Virginia Melton, Professor and Mrs. T. S. Roberts, Professor and Mrs. Emery Hobson, Eugenia Savage, Louise Findley, Margaret Arnold, Margaret Lewis, Florence Young, Evelyn Lindberg, Helene Price, Betty Corski, Dorothy Jean Ryan, Helen Bridgeman, Katherine Everett, Marjory Miller, Iva Claire Love, Rosalind Van Winkle, Mr. and Mrs. William Wright, Kenneth McCormick, Willis Hathaway, and Walter Kaufman.

### Members of Beta Chi Alpha Enjoy Banquet Last Evening

The Delta chapter of Beta Chi Alpha celebrated completion of Wallulah work and the pledging of new members at a formal banquet at the Spa, Thursday evening.

Professor E. C. Richards, faculty member of the organization, presided as toastmaster. The responses were as follows:

- "Better College Annuals" . . . . . Hugh McGillvra
- "Organization" . . . . . Irene Breithaupt
- "Snapshots" . . . . . Wendell Keck
- "Wallulah Presentation" . . . . . Paul Geddes

The guests and members of the fraternity present were Professor and Mrs. E. C. Richards, Phoebe Smith, Louise Nunn, Irene Breithaupt, Margaret Bolt, Mary Louise Alken, Frances McGillvra, Helen Curry, Norabel Pratt, Lucille Lear, Marjory Miller, Florence Power, Camilla Gates, Florence Emmons, Louise Garrison, Alice Lane.

Charles Redding, Hugh McGillvra, Louis Oberson, Paul Geddes, Carol Pratt, Kenneth Litchfield, Wendell Keck, Frank Van Dyke, Earl Henry, Donald Grant, and Robert Sears.

### Members of Salem Woman's Club Hear Dr. Vazakas

Dr. Alexander Vazakas spoke at the meeting of the Salem Woman's club Saturday on "Mysticism in Literature". Dr. Vazakas was introduced by Mrs. George H. Alden, head of the applied education department of the club which was responsible for the program.

Dr. Vazakas traced the development and influence of mysticism in literature from the early Christian era to the present day. His talk was augmented with references to his experiences in the various European countries where he is very much at home. American civilization, said the speaker, is the result of the fusion of Greek culture and Hebrew religion.

In addition to the address of the afternoon, Mrs. Martin Ferrey gave several vocal selections with Evangeline Hall playing her accompaniments. Mrs. Ferrey sang "Still of the Night" by Bohm and "Pomegranate Are Your Lips" by Finden.

### Beethoven Formally Initiates Pledges at Willamette Lodge

The Beethoven Society formally initiated seven pledges into membership Thursday evening at Willamette Lodge.

After the initiation service, during which Eugenia Savage played soft music, a musical program was presented. Miss Frances Virginia Melton played "The Eagle" by McDowell; Betty Corski played "The Early King" by Schubert; and Walter Kaufman sang "The World is Waiting for the Sunrise" accompanied by Kenneth McCormick.

Dainty refreshments consisting of icecream cocktail, cake and punch were served.

The new members are Marjory Miller, Katherine Everett, Rosalind Van Winkle, Iva Claire Love, Walter Kaufman, Ronald Craven, and Wendell Robinson.

### Philodossians Discuss "Hobbies" At Last Regular April Meeting

The Philodossians' last meeting for April centered about a discussion of "Hobbies". Each girl present revealed her hobby and why she chose that particular one. Many interesting avocations were disclosed, and the meeting proved very successful in its uniqueness.

### Former News Correspondent Speaks at Town and Gown Club

Mrs. A. A. Lee, Mrs. J. O. Hall, Mrs. John Reed, Mrs. Alice H. Dodd, and Mrs. W. C. Dibble were hostesses at the regular meeting of the Town and Gown club at Lausanne Hall on Thursday.

Miss Sarah Wrenn spoke of her interesting experiences as a newspaper correspondent in Japan and ex-

hibited art pictures and curios which she collected in the Orient.

Margaret Arnold, accompanied by Eugenia Savage, sang several selections during the afternoon.

### Balderee Home is Scene Of Informal Party Friday

The home of Mr. and Mrs. R. G. Balderee was the scene of a delightful party for a group of Willamette students on Friday evening.

Games and music were enjoyed throughout the evening. Lunch consisting of potato salad, sandwiches, pickles, olives, cake, coffee, and minuts was served.

Those present were Vivian Hauge, Dorothy Pemberton, Mary Jo Wagner, Agnes Emmel, Dorothy Young, Dorothy Estling, Aletha Hoffnall, Willis Balderee, Collis Marsters, Raymond Miller, Bruce Spaulding, Sam Bove, Francis DeHarport, Ralph Purvine.

### Sorority Members are Guests of Alpha Psi Delta Fraternity

Alpha Psi Delta entertained members of Alpha Phi Alpha at dinner on Sunday.

The guests of the fraternity were Mrs. O. P. Hoff, Mary Martin, Bernice Newhouse, Mary Rattie, Georgia Fairbanks, Anna Mary McKinley, Mary Clantfield, Sarah Poor, Dorothy Gordon, Donna Hildesheim, Leona Clothier, Marion Michaelson and Dorothy Estling.

### Birthday Dinner Party Honors Lausanne Girl

Saturday evening Marie Foster was entertained with a birthday dinner at Lausanne Hall. A center-piece of apple blossoms carried out the color scheme of pink-and-white.

Those present besides Miss Foster were Dorothy Estling, Leone Marlett, Dorothy Pemberton, Mary Wagner, Dorothy Young, and Bessie Weaver.

### Beta Chi Alpha Announces Pledging of Seven Students

The Delta chapter of Beta Chi Alpha, national honorary fraternity for college annuals, announces the pledging of the following members of the Wallulah staff: Alice Lane, Florence Emmons, Marjory Miller, Frank Van Dyke, Earl Henry, John Minto, and Robert Sears.

### Epsilon Delta Mu Fraternity Installs New Officers Friday

The Epsilon Delta Mu fraternity installed the officers whom they have chosen to guide them through the coming year at their regular business meeting Friday evening. The men installed were president, Eugene Silke; vice-president, R. Wesley Warren; manager, Frank Grover; secretary, Frank Mason; treasurer, Cyril Botts.

After the meeting the evening was devoted to athletic stunts, contests, and music. Guests present were Professor E. C. Richards, Dean R. R. Hewitt, and Mr. Robert Stone.

### Classical Club Discusses "Who Shall Study Latin?"

The Classical club held its regular meeting at noon Thursday in Philodossian Halls.

Dorothy Whipple and Marjorie Nelson discussed the topic, "Who should study Latin?"

Stew, salad, sandwiches, Eskimo pie, and chocolate were served during the noon hour.

### Rowland Printing Co.

Masonic Temple  
Phone 1512  
"The Home of Good Printing"

325 State St. Phone 596

**C. A. Luthy**  
Jeweler  
Salem, Oregon

**CAPITAL DRUG STORE**  
Agents Owl Drug Co.  
J. H. Willett  
"Only the Best"  
Katty Korner Bldg. Nat. Bank Bldg.

"Say it With Flowers"  
From  
**C. F. BREITHAUPT**  
Salem's Telegraph Florist  
123 N. Liberty St. Phone 380

We Preach Efficiency and we Practice What We Preach  
**BANK BARBER SHOP**  
No Two Piece Haircuts

**BEST FIVE CHAIR ACCOMMODATIONS IN THE**  
**New Hotel Senator**  
Barber Shop

### Chapel Program Wednesday Is Presented by Beethoven

The Beethoven Society presented the following program in chapel on Wednesday at the regular student chapel:

- Hark, Hark, the Lark! . . . . . Schubert-Liszt
- Dorothy Jean Ryan
- I Know a Lovely Garden . . . . . Hardelet Marjorie Miller
- Pastorale Symphony . . . . . Beethoven
- Eugenia Savage, Rosalind Van Winkle, Margaret Schriber, Helen Bridgeman.

Dr. and Mrs. Robert M. Gatke were the week-end guests of Mrs. Merle Gregg, 22, at Bell Fountaine. Dr. Gatke delivered the sermon at the Methodist church on Sunday.

Dr. H. C. Kohler, Professor Florian Von Eschen, Harry G. Crouse, and Everett Gardner motored over the Roosevelt highway Wednesday, returning on Thursday.

Herbert Swift spent the week-end in Portland.

Dr. and Mrs. J. M. Cause were at Shelburn, Sunday, where Dr. Cause was in charge of the church services.

William B. Smullin was the lunch-guest of Dr. and Mrs. Robert Moulton Gatke on Saturday.

Dr. J. M. Cause of Kimball will leave Monday for Kansas City to attend the General Conference.

Edna Card spent the week-end in Dallas.

Benah Launer will visit her sister, Mrs. B. A. Newman, at Bend, Oregon, for an indefinite length of time, because of ill health.

**Dr. George E. Lewis**  
DENTIST  
502-503 First National Bank  
Office Phone 852  
Res. Phone 803-W

**Patton Bros.**  
SALEM'S BEST BOOK STORE

**Dr. B. J. Pound**  
DENTIST  
406-7 U. S. Bank Building  
Phone 2040 Salem, Ore.

**Bayes and Canfield**  
"Wind-blown" Specialists  
Over the Graybelle

BETTER SHOE SHINES AT  
**THE SHYNE SHOPPE**  
443 State Salem, Ore.

**PAT THATCHER VIO BARQUESS**  
QUALITY BARBER SHOP  
Next to Dixie Bakery  
439 Court St.

**DR. W. L. MERCER**  
Graduate  
American School of Osteopathy  
Kirksville, Mo.  
Salem, Ore.

The Best of  
May Day Wishes  
to  
Willamette  
**The J. J. Kraps Co.**  
PRINTERS  
Peppy Printing Pays—Phone 1256

**LISTEN; FELLOWS**  
You know girls get tired of walking and cars are rented without drivers by  
**Drive Ur Self Co.**  
Entrance from rear off Court St.  
235 North High Phone 885

Mr. and Mrs. C. O. Botts of Wauna were visitors at the Epsilon Delta Mu house Saturday.

Mary Herahberger was a week-end visitor at her home in Independence.

Margaret Wieneke spent the week-end in Portland.

Elma Nell visited in Vancouver Saturday and Sunday.

Wesley Warren was in Canby over the week-end.

Esther King of Portland visited Bonnie Weinheimer over the week-end.

Joyce Kidder spent the week-end at her home in Gresham.

Edna Card was a guest of friends in Dallas over the week-end.

Betty Corskie visited her sister, Mrs. Claire Ausman, at Tangent Saturday.

Jean White and Frances McGillvra spent the week-end at their respective homes in Portland.

Patronize Collegian Advertisers

**Klasic Photo Shop**  
546 STATE ST.

**TROVER**  
PHOTOS THAT PLEASE  
122 N. Commercial

**J. J. KRAPS CO.**  
PRINTERS  
So. 13th and Wilbur  
Phone 1256

**HARTMAN BROS.**  
JEWELERS  
Cor. Liberty and State

WE HAVE A BEAUTIFUL ASSORTMENT OF  
**Mother's Day Boxes**  
50c TO \$5.00  
**GRAYBELLE**

BOOTHS FOUNTAIN SERVICE  
**THE WHITE HOUSE RESTAURANT**  
Soft Drinks Meals

CONFECTIONERY LUNCHES  
**The Shamrock**  
FOUNTAIN 116 N. LIBERTY

Walk-over Foot-wear  
**John J. Rottle** Cantil- ever Shoes  
415 State Street

Send Mother a Photo From  
KENNELL—ELLIS Studios  
W. U. Photographers

A Wonderful Assortment  
of Candy Boxes filled with Spa's Delicious Candy  
For Mother's Day  
See our windows  
**THE SPA**

**COLLEGIATE**  
Bandeaus and Garter Belts  
49c to 98c  
**Shipley's**  
AS YOU GO STORE

**MAY**  
The May Festival Be Filled with Happiness  
**The Bake Rite Bakery**

**The Price Shoe Company**  
"The Store of Quality"  
**Welcomes**  
The Guests to  
**Willamette Campus**  
and  
**Greets**  
Everyone at this  
**May Time Festival**

# - S P O R T S -

EDITOR  
ROBERT McGILVRA  
Assistants  
Woodworth and Ackerman

## LINFIELD MEET SATURDAY 2:30

### CLOSE COMPETITION PROMISED ON TRACK

#### Linfield and Willamette Appear Evenly Matched for Saturday Afternoon Event

The May Day track meet scheduled with Linfield gives promise of being a most hotly contested meet. Linfield is coming with the idea of avenging their defeat of last year, and at present have an even chance of doing so. Willamette won the meet last year by taking the final event, the relay. This year, with but one experienced relay man back, the Bearcats must necessarily capture their points in the field and running events, instead of depending upon the relay team to clinch the meet for them.

Reviewing the records made in the Linfield-Albany meet, Willamette has a very good chance to win from Linfield. In the Linfield-Albany meet, the javelin event was won with a mark of 122 feet. Willamette has at present three men who can easily better the 150 foot mark, and thus should take the first three places against Linfield. The winning height in the polevault was 8 feet 6 inches, which is a very poor mark in college competition. W. U. trackmen should also place one, two, three, in the event. Linfield, against Albany, took second in the mile event, which was run in 4 minutes 47 seconds. Several Willamette milers have bettered this time. The half mile event was won with a time of 2 minutes 8 seconds, and although this is fairly fast time, Coach Sparks' men should place well up in this race. 36 feet was the best made for the shot put event, and is about on par with Willamette weight tossers. In the broad jump, Colgan is figured to do as well as the Linfield mark of 19 feet 6 inches, while in the high jump, Linfield appears to have the edge.

Linfield failed to show much in the sprints. Martyn, their dash man, placed only second in both the 100 yard and 220 yard dashes, but at that may possibly show his heels to Willamette on May Day.

### LAW SCHOOL TAKES LEAD IN DONUT BALL LEAGUE

#### Alpha Psi Nine Defeated by Barristers; Absence of Litchfield Weakens Fraternity Team

The Law School team went into undisputed leadership of the Donut League Wednesday noon when they defeated the crippled Alpha Psis by a score of 8 to 4.

The Alpha Psis started in the lead by scoring a run in the first inning, but in the third the lawyers began to find their batting eye and scored twice to take the lead which they re-

tained throughout the game. The ranted batting attack of the Attorneys did not look so good yesterday; almost a dozen men were left on base. Perhaps this was due to Winslow's ability to control the ball in patches, but at any rate the lawyers did not score very often.

The work of Winslow and Bove stood out for the Alpha Psis, who were handicapped by the absence of Litchfield and White. Though the lawyers had no outstanding men, they played a fast game in the field, where they made three double plays, and staidter provided the feature of the game when he caught Van Joyce's vicious slam at the far end of the gym as it bounced back to the playing field.

The Do Not League Standings on Wednesday:

|                  | W. | L. | Pct.  |
|------------------|----|----|-------|
| Law School       | 2  | 0  | 1.000 |
| Alpha Psi        | 2  | 1  | .667  |
| Epsilon Delta Mu | 1  | 1  | .500  |
| Sigma Tau        | 1  | 2  | .333  |
| Kappa Gamma Rho  | 0  | 2  | .000  |

### MONMOUTH TENNIS STARS GIVE FIRST OPPOSITION

#### Bearcats Win from School Teachers By a Score of 5 to 1 on Thursday

The Willamette racquetees were victorious over the Monmouth Normal men last Thursday in their first match of the year winning by a score of 5 to 1.

Although they were not in very good form because of a lack of practice the men showed that they are going to be way better than last year. Four of the matches were won by a score of 6-4, 6-1 and one doubles match went to three sets. Al Haworth had an off day, his drives and net work falling him miserably but he gave his man a good run for the match.

The scores of the matches were as follows:

White defeated King 6-4, 6-1.  
Minto defeated ..... 6-4, 6-1.  
Litchfield defeated Rodgers 6-1, 6-4.  
Haworth lost to Spring 8-6, 6-4.  
White and Minto defeated King and 6-4, 6-1.  
Litchfield and Haworth defeated Rodgers and Spring 6-3, 3-6, 7-5.

### FRESHMAN AND SOPHOMORE PREPARE FOR ANNUAL TUG

#### Van Bateson and Fred Tooze Picked to Hold Down Anchor Positions on Teams

With Van Bateson and Fred Tooze Jr. picked as anchor men for the freshmen and sophomore class respectively, the annual tug of war contest promises to furnish the usual attraction on the afternoon program for tomorrow. The two teams are scheduled to meet at 2 o'clock to decide who shall be dragged across the mill stream. Traditionally the freshmen are supposed to lose, but from all indications they will have a strong team this year and have every possibility of showing their physical superiority over the second year men.

The probable line-up for the freshmen will be Bateson, Ramage, West, Graber, Paine, Baldersee, Taylor, Flock, Philippott, Felton, DePoe, and Haldeane.

### BEARCAT NINE LOSES SERIES WITH OREGON

#### Game With Pacific Decides Willamette Chances in N. W. Western Division

Willamette was severely trounced in its two game series with the University of Oregon last week, by 16 to 1 and 11 to 2 scores. Both MacDonald and Fuller Oregon pitchers were almost invincible. Each allowed only one hit per game. Willamette scored in the first game on a double by Hauk and a balk by Fuller. Fuller for two years was the all-star Portland pitcher but was occasionally wild and was especially so in his game against Willamette.

In the second game Kaufman was the only man to get a hit. Errors on the part of Oregon were responsible for the two runs. Kaufman and Roundtree were the only men who showed any life. Willamette has better material this year than last but the team has no life and can not get going. Unless they can come around and beat Pacific next Friday they will be definitely out of the race. Pacific beat Linfield by a 6 to 3 score and Linfield in turn defeated Willamette; so Pacific is hoped to win easily. The game will be held at Oxford Park at 3 o'clock.

First Game

|                | AB | H | R |
|----------------|----|---|---|
| Willamette (1) | 32 | 1 | 2 |
| Roundtree, 1   | 1  | 0 | 0 |
| Dietz, m       | 3  | 0 | 0 |
| Hauk, 3        | 4  | 1 | 1 |
| Trachsel, r    | 3  | 0 | 0 |
| Cardinal, c    | 3  | 0 | 0 |
| Adams, 2       | 4  | 0 | 0 |
| Welsh, 1       | 2  | 0 | 0 |
| Girod, ss      | 4  | 0 | 0 |
| Ledbetter, p   | 2  | 0 | 0 |
| Sachwell, 1    | 1  | 0 | 0 |

Oregon (16)

|              | R | H | R |
|--------------|---|---|---|
| Robie, s     | 4 | 2 | 4 |
| Mason, 3     | 3 | 2 | 2 |
| Gould, r     | 4 | 2 | 1 |
| Epps, 1      | 6 | 0 | 0 |
| Edwards, m   | 3 | 2 | 2 |
| Ridings, c   | 4 | 1 | 2 |
| Nelson, 1st  | 3 | 2 | 2 |
| Gabriel, c   | 2 | 0 | 0 |
| Fuller, p    | 3 | 0 | 1 |
| Gannon, p    | 0 | 0 | 1 |
| Johnson, 1st | 1 | 0 | 0 |
| Dutton, m    | 0 | 0 | 0 |
| McCormick, 3 | 2 | 1 | 1 |
| Woodie, c    | 1 | 0 | 0 |
| Reynolds, r  | 1 | 0 | 0 |
| Hanley, 2    | 0 | 0 | 0 |

Second Game

|                | AB | H  | R  |
|----------------|----|----|----|
| Willamette (2) | 37 | 13 | 16 |
| Roundtree, 1   | 4  | 0  | 0  |
| Dietz, m       | 4  | 0  | 0  |
| Girod, ss      | 4  | 0  | 0  |
| Kaufman, c     | 4  | 1  | 1  |

**MITZI-GRAY BEAUTY SHOPPE**  
709-13 First Nat'l. Bank Bldg.  
TELEPHONE 187  
Nestle Circuline Permanent Waving and Finger Waving

**Classy Oxfords For Young Men**  
At Popular Prices  
**Kafeteria Shoe Store**

**MALTESE BARBER SHOP**  
Fools all 482 Court St.  
Sterilized 4 Artists  
Sign of Maltese Cross  
H. A. GWYNN, Prop.

Shoe Rebuilding a Specialty  
**H. M. STYLES**  
South Liberty Street

**MORRIS OPTICAL CO.**  
Drs. { Henry E. Morris  
R. W. Morris  
R. M. Dougherty  
301-303 First Nat. Bank Bldg.

|             |   |   |   |
|-------------|---|---|---|
| Sachwell, r | 2 | 0 | 0 |
| Welsh, 1st  | 3 | 0 | 0 |
| Adams, 2nd  | 3 | 0 | 0 |
| Hauk, 3rd   | 4 | 0 | 1 |
| Vannice, p  | 3 | 0 | 0 |

|              | AB | H | R |
|--------------|----|---|---|
| Oregon (11)  | 32 | 1 | 2 |
| Robie, s     | 5  | 4 | 3 |
| Mason, 3     | 1  | 0 | 0 |
| McCormick, 3 | 1  | 0 | 1 |
| Gould, r     | 2  | 1 | 1 |
| Reynolds, r  | 1  | 1 | 1 |
| Epps, 1      | 4  | 2 | 0 |
| Buttor, m    | 1  | 1 | 0 |
| Edwards, m   | 3  | 2 | 2 |
| Edwards, 2   | 5  | 1 | 0 |
| Nelson, 1st  | 2  | 0 | 0 |
| Johnson, 1st | 0  | 0 | 0 |
| Gabriel, c   | 2  | 0 | 1 |
| Woodie, c    | 1  | 0 | 0 |
| MacDonald, p | 2  | 1 | 1 |
| Schoel, p    | 0  | 0 | 0 |

### ALPHA PSI'S LEAD LEAGUE IN INDOOR DONUT GAMES

#### Second Week of Intra-mural Activities Result in Continued Growth of Interest

|            | W. | L. | Pct. |
|------------|----|----|------|
| Alpha Psi  | 2  | 0  | 1000 |
| Law School | 1  | 0  | 1000 |
| Epsilon    | 1  | 1  | 500  |
| Sigma Tau  | 1  | 2  | 333  |
| Kappa      | 0  | 2  | 000  |

The Kappas lost their second game in the indoor baseball league to the Sigma Taus last Thursday by a 7 to 2 margin.

Purvine pitched airtight ball for the Sigs and was backed up by consistent fielding which was able to hold the Kappas scoreless except for the first inning when the Kappas brought in two runs on a hit by Yarnes.

The Sigs brought in three runs in their half the third inning and held this lead until the sixth inning when they brought in four more runs on a barrage of hits.

The Kappas were unable to connect with the ball and their fielding was marked by several errors. The Alpha Psi donut league nine won its second game from the Epsilons last Friday 9 to 7 and advanced

**TRY US FIRST**  
**Salem Hardware Co.**  
The Winchester Store  
Salem, Oregon  
120 N. Commercial Street  
Phone 172

We have Handle W. U. Students' Accounts for 59 years

**LADD & BUSH**  
BANKERS  
Salem, Oregon

**Central Pharmacy**  
Perfumes Stationery  
Next Door to Bank of Commerce

**Chalmer Lee George**  
D.D.S.  
General Dentist  
1003 First Nat'l Bank Bldg.  
Telephone 181

**PERRY'S DRUG STORE**  
Rexall Store  
Everything in Drugs

Phone 625  
**Dr. L. R. Burdette**  
401-402 First Nat. Bank Bldg.

PHONE 169  
**Dr. B. Blatchford**  
DENTIST  
701 First Nat'l. Bank Bldg.

into first place in the league standings.

The Alpha Psis missed their star pitcher and batter, Litchfield, but were able to hold the Epsilons to a low score while they hit the flingling of Silkey for seven runs.

Playing with only six men the Sigma Tau nine lost a hard game to the Epsilon Delta Mu Tuesday by a score of 9 to 7. The score was tied until the sixth inning when the Epsilons brought in two runs off Graber who went in to relieve Purvine. Buttor, m went in to relieve Purvine. The Epsilons started the game with a bang and secured 5 runs three of which were walked in by Purvine. The Sigs slowly closed the margin until the score was tied in the sixth inning.

Silkey showed more speed than any pitcher in the league but had difficulty putting them over the plate.

### WILLAMETTE RACQUETEERS MEET OREGON STATE TEAM

#### Willamette Will Face Corvallis Aggregation in Return Match Tomorrow

Willamette's tennis team ran up against some strong competition last Friday when they lost to the Oregon State net team in five matches out of seven.

Ivan White won from Speros in straight sets 6-0, 6-4. White and

**Dr. O. A. Olson**  
Treatment of Pyorrhea and X-Ray  
Evenings by Appointment  
214 Masonic Temple, Salem, Ore.

**BUNTINS**  
Next to Capitol Theatre  
Sandwiches & Hot Chili

**Neimeyer**  
Just Drugs 175 N. Com'l St.

"IT PAYS TO LOOK WELL"  
**The State St. Barber Shop**  
For all the Family—  
Close to the Capital and W. U.

We Are Now in the  
**New Hotel Senator**  
THE TERMINAL SHINE

When you think Drugs  
Think Schaeffer

**SCHAEFFER'S**  
DRUG STORE  
THE YELLOW FRONT  
185 N. Com'l. St.

Office Phone 859 Res. Phone 469J  
**DR. B. H. WHITE**  
Physician and Surgeon  
OSTEOPATHY  
506 U. S. National Bank Bldg  
Salem, Oregon

**ROTH'S**  
"The Best of Everything"  
Groceries and Meats  
Thirty Day Account Service  
No Charge for Delivery  
Phones 1885-6-7  
134 N. Liberty St.

Minto put up a great battle in their doubles match and after winning the first set 5-7 and dropping the second 3-6 they took the third set in easy style.

Minto played the Oregon State first man in his singles match and had hard going losing 6-0, 6-1. Litchfield and Haworth were outclassed in their singles matches 6-3, 6-2, and 6-2, 6-3.

Hageman playing his first match with the varsity put up some strong opposition in his first set but slowed up in the second and lost the match 6-4, 6-2. Litchfield and Haworth lost

6-3, 6-1 to the crack Oregon State doubles team, consisting of Aires and Wood.

The Willamette net men will get another try at the Beavers when they play here tomorrow on the home courts.

**Sherman Clay & Co**  
Everything in Music  
130 So. High St. Phone 2284

**MOTHER**

Don't forget her on May 13th, she will be waiting to hear from you.

We have a wonderful display of Mothers'-day cards and remembrances.

**Atlas Book Store**  
465 State Street

**20TH CENTURY STORES**

SPECIALIZES IN NATIONALLY ADVERTISED GOODS  
MEAT DEPARTMENT  
QUALITY AND SERVICE  
GUARANTEED

**SPECIAL PRICES TO FRATERNITIES**

**BUSICK'S**  
STANDARDIZED CASH STORES

SERVICE — QUALITY — ECONOMY  
Wholesale Prices to Fraternities and Sororities  
Salem, Oregon

**TRACK EQUIPMENT**  
Running and Jumping Shoes  
Baseball Goods  
**Anderson's**  
The Sporting Goods Store

**ONE DOLLAR**

Takes any  
**Portable Phonograph**  
in our store. Balance \$2 per week

**N.L. Stiff Furniture Co**  
COMPLETE HOUSE FURNISHERS

**WELCOME**

May Day Visitors  
and Grads

"Salem's Leading Sporting Goods Store"

**Ken Brown**  
372 State St.

*Junior Class Play Tonite*

**"The Passing of the Third Floor Back"**

8:15 **BLIGH'S CAPITOL THEATRE** Admission 50c-75c-\$1.10

### Sport Sidelights

#### Interclass Track Meet Cancelled by Sparks

It is altogether fitting and proper that we should have on this page an opinion of the weather as it has been treating the city of Salem in the last two months. Not only has it hindered the training of the three teams now out for practice but it has made it necessary to postpone one baseball game three times, cancel a two game series, postpone the interclass track meet twice, and two tennis matches for an indefinite time.

The Kimball volley ball team won second place in a tournament held at the Y. M. C. A. last Thursday evening in which a number of local teams participated. Professor Hertzig was awarded the tournament cup given to the member most valuable to his team.

Whitman College net men took their doubles match from the University of Washington yesterday but lost both the singles matches. Penrose and Oswald took the doubles 6-4, 6-2 from Newkirk and Langlie of the Huskies. Worth Oswald stood out as the outstanding player and featured the match with his perfect stroking.

The interclass track meet is definitely cancelled. Because of the weather it was impossible to have it this week and after this week it will not be necessary to have some way to pick the men for the meets. Sparks has been running off each night in an effort to get a line on his material.

Spk Keene's Theory of Coaching class put some of their theory to practise in a basketball game yesterday in class time. Coaches Ledbetter and Cardinal had their men all pepped up to go and drilled in their respective systems. Ledbetter's men using the long pass system and Cardinal's following the long shot and follow in game. Ledbetter's men came out on top with

#### JACK MINTO



Jack is going to give the Oregon State second man a hot time tomorrow.

nineteen points while Cardinal's proteges could only garner thirteen. French, Beck, and Flock starred for the winners and McMullin and Versteeg played a good game for the losers.

Willamette is going to be handicapped when they meet Linfield in track tomorrow by the loss of the only sprinters on the squad. Rodgers pulled a tendon in practise on Wednesday and will be out for some time. Colgan who was figured on for points is ineligible for this meet. These losses will mean just giving eighteen points away in the sprints and will make it hard to win the meet.

The two tennis courts that were supposed to have been finished during Spring vacation have now been leveled off and covered with a layer of gravel. They will be rolled sometime and if possible the concrete will be poured. (This is sarcasm.) But seriously, it appears now as if the courts will not be ready for any matches this year.

The reason some people are not afraid of the ocean is that they think it is tide.

Cain may have been the first to fight, but that doesn't signify that he was a marine.

Ever hear the story of the two men? He He.

### Geo. C. Will

Dealer in  
Pianos, Phonographs  
Sewing Machines  
Musical Instruments  
Sheet Music, Music Studies  
Pianos and  
Sewing Machines Rented  
432 State St.  
Salem, Oregon

## BEARCAT TEAM BEATS REED COLLEGE SQUAD

### Willamette Wins by Narrow Margin of 5 to 4; Six Man Team Used

Six Willamette net men journeyed to Portland last Wednesday and defeated Reed College by the narrow margin of 5 to 4. The Bearcats won three single and two double matches.

White started the afternoon with a victory over Trenholme, Reed College ping pong artist. White walked off with the first set in easy style winning 6-2 but had a hard time taking the second 7-5.

Minto played an erratic game against Campbell and after winning a love set dropped the second 6-3. Jack showed his lack of practise and he had a hard time taking the third set 6-4. Minto made some brilliant shots from the back court and played a fast net game.

Litchfield was not up to form in his singles match and lost the last two sets 6-4, and 8-6 after he had taken the first 6-3. Haworth ran up against a strong opponent in Atkinson and lost in straight sets 6-2, 6-3.

Hageman played a fast consistent game against Latta and came through in fast shape to win 6-0, 6-4.

McGilvra was outclassed in every way and dropped his match 5-0, 6-1, to Sweet.

With the single matches tied at three all the Willamette man had to win two of the doubles matches or

#### IVAN WHITE



Ike is holding down first man again and is playing the best tennis of his life.

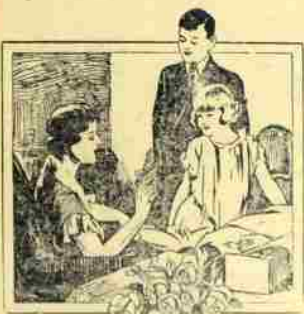
lose the whole match. Minto and White suffered a reversal of form in their doubles and lost to Trenholme and Atkinson 6-3, 6-4.

Litchfield and Haworth came through in fine style to take their doubles after losing both their singles. The Reed men, Sweet and Campbell took the first set 6-4 but Litchfield and Haworth found their weak spots in the next sets and won 6-3 and 6-2.

This left the matches all square at four each and Hageman and McGilvra took the match by winning their sets 6-3, 2-6, 8-6 from Griffen and Latta.

### KAPPAS SUFFER DEFEAT AT HANDS OF DELTA MUS

The Kappas suffered another setback in the donut league when they lost to the Epsilons Thursday noon 10 to 7 in a fast exciting game.



### Mother's Day Sunday - May 13th

AMONG all the many words we say, what two express thoughts so closely linked as *Mother* and *Flowers*. Sunday is her day.

Say it with flowers

### C. F. Breithaupt

Salem's Bonded Telegraph Florist  
Phone 380 512 State St.

Silkey held the Kappas at bay with his speed until the third inning when he walked in two runs and had three more batted in. The Epsilons had no trouble hitting the delivery of Kaufman but until the fourth inning his teammates backed him up with some fast fielding. The Epsilons gained the lead in this inning bringing in four runs. Again in the fifth the Epsilons raised their total to ten.

In the sixth inning the Kappas started a rally which netted only one run and left two men on base. Silkey was the only individual star for the Epsilons while Kaufman and Harmon played a good game for the Kappas.

### TENNIS TEAM CLEANS UP LINFIELD RACQUETEERS

The Willamette varsity net team made a clean sweep of their four matches with Linfield yesterday on the association courts.

White easily disposed of McFarness against Oregon State Saturday it is going to go hard for the state school men who previously defeated the Bearcats 5-2 at Corvallis.

### EASTERN SECTION TITLE WON BY WHITMAN COLLEGE

Whitman clinched the baseball title in the Eastern section of the Northwest Conference this week by winning from College of Idaho in two games 9-1 and 14-2.

The Whitman team slugged the Idaho pitchers for numerous hits and helped along by several errors in the Idaho fielding were able to overwhelm the Coyotes. The Whitman pitchers hurled airtight ball and kept the few Idaho hits well scattered.

Willamette is going to have hard sledding to take the title of the Western section of the conference having already lost to Linfield but as none of the other schools have scheduled enough games to claim the title, Willamette can technically claim the Western title without winning a game.

White and Haworth played together in doubles for the first time and didn't work together very well when they came to the net. The Willamette men took the first set 7-5, dropped the second 6-2, and then won the third set 6-3.

If the men keep up the same form

### LESTLE SPARKS



Bearcat track coach will send his men against Linfield tomorrow in the first meet of the season.

against Oregon State Saturday it is going to go hard for the state school men who previously defeated the Bearcats 5-2 at Corvallis.

### EASTERN SECTION TITLE WON BY WHITMAN COLLEGE

Whitman clinched the baseball title in the Eastern section of the Northwest Conference this week by winning from College of Idaho in two games 9-1 and 14-2.

The Whitman team slugged the Idaho pitchers for numerous hits and helped along by several errors in the Idaho fielding were able to overwhelm the Coyotes. The Whitman pitchers hurled airtight ball and kept the few Idaho hits well scattered.

Willamette is going to have hard sledding to take the title of the Western section of the conference having already lost to Linfield but as none of the other schools have scheduled enough games to claim the title, Willamette can technically claim the Western title without winning a game.

Don't be alarmed when you hear a rasping noise on the stage during a chorus show. It may be the chorus girls filling off the stage.

No matter how gay the show may be, the audience is generally found in tiers.

## P. U. NINE PROMISES HARD BALL CONTEST

### Outlook for Game with Forest Pillet Men not Particularly Bright

Unless Coach Keene has been able to work marvels with his baseball nine in the last week the Willamette Bearcats are booked for a hard game and possible defeat this afternoon when they meet the Pacific University Badgers at Oxford Park.

Last week the Badgers defeated the Linfield nine 4 to 2. Willamette dropped her game with the Linfield Wildcats 7 to 6. Since then Keene has had some good weather and his men should be in much better shape for the Pacific game.

The Badgers are without the services of their last year's hurler but they have their pitcher of two years ago back and they should be just as strong as last year in the box. Their veteran catcher, Tucker, who made four hits in the game with Willamette last year is back and going strong. Their captain, Dreesen is holding down the initial bag. Walker is showing up well at short and Pete Miller in the outfield is slugging the ball in his usual style.

Ledbetter will no doubt start the game on the mound. Ledbetter was not up to his last year's form against Linfield but will be in top form for today's game.

### BEARCAT ROOKS DEFEAT SALEM HIGH TENNIS MEN

Five of the seven first round matches in the Freshman tennis try-outs have been played. Ring defeated Patton, Waddel forfeited to Hageman, McGilvra defeated Hollenberg, Harmon beat Hollister, and Glass forfeited to Wells. The Page-Kellow and the Baldersee-Gilhouseen matches are the only ones yet to be played.

Thursday afternoon after the Varsity-Linfield match the Rooks played three single matches with the high school team. Hageman took one set from Schaeffer 6-3 and then lost the second 8-6. It was too dark to play the third set to decide the match.

McGilvra had a hard time winning from Bush in three sets. After dropping the first 6-4, Bob took the next

two 7-5, 6-2. Ring had little trouble winning from Monk 6-0, 6-4.

A match will be played with the high school later on when the tournament has been played off and the men definitely chosen. No matches have been scheduled with outside schools as yet but if the team is up to form several matches with Portland High schools can be arranged.

### THETA ALPHA PHI LEAD AGAIN TAKEN BY ALFRED

#### Dramatic Fraternity Will Present One Act Play Before American University Women

According to latest announcements, Frank Alfred will hold the part of leading man in the Theta Alpha Phi, National Dramatic Fraternity play to be given Friday evening, May 25, at the Capitol Theatre instead of Waller Hall as previously announced. The lead and also the date of production have been changed several times, but both are now fairly certain.

The managership will be in the hands of Don Grant, who has several times held this position. Everett Fac-

her has been announced as the stage manager, and Ella Pfeiffer as costume mistress. The play, this semester is under the direction of Dr. John O. Hall, Professor of Public Speaking.

Each semester Theta Alpha Phi puts on a major dramatic production, along with a number of one-act plays. On May 19, Theta Alpha Phi will present a one-act play before a meeting of the Association of American University Women to be held at the Gray Belle. A special feature of the play will be an experiment in using daylight lighting, and the absence of a special set. This type of production was used successfully in a play presented at a meeting of the Town and Gown Club at Lausanne Hall. Dr. Gatke will direct this one-act play.

If the boss goes out after dinner he will not be in after dinner but that is what he went out after.

Never pay \$5 for a handkerchief; that is too much to blow in.

A young man should not make love before twenty. That is entirely too large an audience.



Have this Label in your New Spring Suit. It is a small thing to look for but a big thing to find.

It Means Hart Schaffner & Marx

and a Guarantee of Satisfaction

Bishop's Clothing and Woolen Mills Store

## SPRING FELTS

Silver Gray and Western Tan are two particularly popular shades. But there are many others, too, in these fine felts for Spring.

\$6

Others \$5.50 to \$7.50

Emmons

Tailor, Furnisher  
Clothing

## Elsinore

Mat. SATURDAY Nite

The Elsinore Manhattan Players in

### "The Hoodlum"

—also— FRED THOMPSON in

### "The Pioneer Scout"

Bargain Matinee, 25c and 10c Night, 60c and 10c

Coming Next Week to the

## Oregon

The Screen Classic

### "Ben Hur"

WED., THURS., FRI., SAT

Ramon Novarro  
Francis X. Bushman  
May McAvoy

# MOTHER

Mother is the best pal you ever had. To show her your appreciation send her a card or gift on

## MOTHER'S DAY (May 13th)

We have special mottoes and stationery for Mother's Day.

### THE COMMERCIAL BOOK STORE

A. A. GUEFFROY

## Welcome Alumni!

### C. A. Luthy Jewelers

325 State St.

Headquarters for Graduation Gifts

"Our prices are right."  
Our Service the Best.

## COME OUT TO

# Mack's

For Your Clothes

## Where the College Girls Buy their Outfits

# BLANKETS

We Launder Wool Blankets --- We Make Them Look Like New

## CURTAINS

Lace, Scrim, Nottingham or Fancy

We Do Them Beautifully

## Salem Laundry Co.

Phone 25 WEIDER'S LAUNDRY 263 S. High St.

# ANNUAL DISTRIBUTION POSTPONED BY STAFF

### 1928 Wallulah Unable to Appear for May Day; Oregon Scenery Motif

According to an announcement made last night at the banquet of the Beta Chi Alpha, honorary fraternity for the members of annual staffs, the 1928 Wallulah will not be distributed for at least a week. The editor said that it might have been possible to deliver the book to the student body on May Day but that in the opinion of the staff that it was the wiser policy not to sacrifice quality for the sake of an early delivery.



PAUL GEDDES

The book this year will be a much larger page size than that of previous years. Although the book will not be as thick as those of larger universities it will in size compare with them in other features. The motif of the book will feature Oregon scenery. This idea will be followed out in the border and in insert pages.

# EDGAR B. PIPER GRAD FROM CLASS OF 1886

### Deceased Oregonian Editor Once Attended Classes in Rooms of Waller Hall

Edgar B. Piper, the editor of the Morning Oregonian, whose death occurred yesterday afternoon was a graduate from Willamette in the class of 1886. In addition to his A. B. degree he was in 1892 given his masters degree, while further honors were given him by his alma mater in 1909 when it conferred upon him the honorary degree of doctor of laws.

Mr. Piper engaged in newspaper work even while in college and after his graduation served on the Salem Statesman as city editor and reporter. He served on many other newspapers and since 1919 has been the editor in chief of the Morning Oregonian.

Mr. Piper's one important and single activity was journalism. Several years previous to his death he wrote, "If I can leave behind me the good opinion of all . . . that I did my best in my chosen profession, and was not lured away from it by mistaken ambitions to be something else . . . I shall be satisfied."

That this one desire was realized is attested to by the fact that his profession all over the United States is today mourning his death.

# CURIOUS REPORTER FINDS HISTORY OF MAY QUEENS

now Mrs. Edgar Martin of Los Angeles and is holding a very desirable secretarial position. Ada Marks, queen in 1913, has her own exclusive court at 1005 North 21st Street, Salem, and is greatly admired by two children and her husband, Waldo O. Mills. Mary Pigler also elected to remain in Salem after her reign in 1914, and is the wife of John Goebel, 1299 D Street, Salem. Royal life seemed to give Lelia Lent, 1915, a taste for counsellors, and she married an attorney, graduated in 1909 of the Law School, Carl E. Wimberly who is practicing at Roseburg and has been county clerk and city attorney in that place. Frances Gittens, 1916, chose John Paul Brown as her king and is still happy as his consort at West Linn where he is head of the West Linn educational department.

A managership of the Ellison-White chautauqua circuit afforded royal sport for Violet McLean, 1917, for some time, but now she is an instructor in the High School of Commerce, Portland and still retains her noble station by establishing her regime in Tudor Arms Apartments, 311. After her experience as a celebrity, Blanche Baker, the queen in 1918, during the war, felt the need of someone experienced in the intricacies of publicity, so she married Earl Proctor, staff artist for a national advertising agency and lives at 1626 E. Gilean Street, Portland.

Each May Day at Willamette brings back Marguerite Wible, 1919, who has married the astute Arlie G. Walker, judge of the circuit court, who has tried some of the most sensational cases in the state during the past two years. Mrs. Walker, at her home in McMinnville, edits her class letter, takes active part in a number of phases of social life, and has almost forgotten that she is royalty.

Evelyn Gordon, who opened the new decade of queens in 1920, married Charles Ekstrum, 680 East 55th Street N., Portland, or at least, that is where Mr. Ekstrum is living since his compact with Her Majesty.

The fifteenth queen, Mary Notson, is now located at her home in Heppner, Oregon. Emma Shanafelt liked May Day but she really preferred Lester S. Day, and so she is the wife of the Golden Gate Y. M. C. A. Boy's Secretary at San Francisco, and is at home at 1447 45th Avenue.

The glories of being queen have been overshadowed by the glamor of a life of travel in Europe for Esther Paronourian, 1923, who is the wife of Ralph Barnes, correspondent for the New York Times, whose story of the landing of Lindbergh was the first to appear in any newspaper. The Barnes' have the privileges of press people, which are greater than those of king and queen, and they have been known to reply to letters addressed to 159 Blvd. Du Mont Par-nasse, Paris.

Kathleen La Raut accepted the homage of Willamette and then went with her husband, Gilbert Wrenn, to Monmouth Normal, where she instructs in music and he criticizes all the teachers—except her.

Luella Card, queen of hearts in 1925, stood high in the deck so she took Jack O. Hansen, Woodburn garageman, and gets a free lift over to the campus every month or so. Myrtle Jensen, 1927, is teaching history at Belle Fountaine, and Mildred Tomlinson—well, Mildred's plans are so very subject to change that it would be best for the curious ones to consult her when they see her here over the week-end.

# ENTERPRISE STUDENTS PRESENT ONE ACT PLAY

### Cast Coached by Adelia Gates, Graduate of 1927; Tournament is Destination

A group of students from Enterprise High School, coached by Miss Adelia Gates, a graduate of Willamette University of the class of 1927, presented a one-act play, "The Purple Dream" by Donald L. Byrnes, in Chapel yesterday.

The play was a fantasy, the story of an English lady's maid who dreamed that she was a princess. The cast of characters were: Mrs. Carver-Blythe . . . Hazel Stickney Ysobel, her daughter . . . Ione Jordan Mary Ellen, her maid . . .

Luella Rinehart . . . Vernon Hays Atkins butler . . . Clifford Collingsworth The Dream Sir George . . . Ralph Brace

The presentation was very well received by the Chapel audience. Miss Adelia Gates, who graduated last year, is teaching French, Latin, Spanish, World History, and coaching dramatics and debate at Enterprise. At Willamette she was a member of Theta Alpha Phi, Tau Kappa Alpha, Beta Chi Alpha, Bar W, and the Chionian Literary Society. Miss Gates was also very active in journalistic and literary circles. She is well known on the campus.

These students from Enterprise were enroute to the University of Oregon at Eugene, where they will present their play at the State High School Dramatic Tournament to-night. Enterprise High School is the only school from Eastern Oregon to enter the tournament.

# COMMITTEE WILL REPORT FRATERNITY SCHOLARSHIP

### Trophy For the Best Average Scholar. Ship Likely to be Awarded Next Week

The awarding of the interfraternity scholarship cup will take place some time next week according to Dr. R. M. Gatke, the chairman of the council.

The matter has been pending for a long period of time. The award should have been made several months ago to the fraternity obtaining the highest average scholarship for its members and pledges. Failure to obtain the grades of the law students has been the reason for the delay.

The Epsilon Delta Mu fraternity at present have the cup in their possession.

**SPECIAL OFFER TO WILLAMETTE STUDENTS**  
25% DISCOUNT ON TENNIS RACKETS  
**Ray L. Farmer Hdw. Co.**

**Something to Wear for Mother on Mother's Day NEW JEWELRY**  
A wonderful Stock of New Jewelry, in sets and separate pieces. Beautiful necklaces as low as . . . 50c  
GLOVES, HOSIERY, HANDBAGS, FLOWERS  
**Kaloury Bros.**  
SALEM — PORTLAND — SPRINGFIELD

**VISIT**  
Our New Store, Full of New Gifts of Useful Items  
**WM. GAHLSDORF, INC.**  
The Store of Housewives  
325 Court Street Salem

# VAN DYKE MANAGES MAY DAY FESTIVAL

### Committees Assist in Preparation of all Plans for Events of Week-end

All plans and preparations for May Day have been under the general direction of Frank Van Dyke who was elected to the position of manager by the executive committee of the student body.

The committee chairman together with the members of their committees are as follows: Queen's Court: Dorothy Ellis, Doris Phoenixe, Beatrice Lockhart, Grace Henderson, George Birrel, Francis DeHarport.

May Dances: Mary Louise Aiken, Buneva Culbertson, Kathryn Eyerett, Marjorie Miller. Student Lunch: Florence Emmons, Camilla Gates, Gaynelle Beckett, Stephen Mergler.

Programs and Invitations: Pauline Findley, Louise Brown, Ray Miller. Hospitality: Willis Hathaway, Grace White, Virginia Edwards. Music: Helen Bridgman, Mary Allen, Lawrence Scheiber.

Campus Stunts: Earl Henry, Homer Roberts, Ralph Schomp. Campus Work: Olive Zeller, Henry Oberson, John Versteeg.

Publicity: Ella Howard, Helen Curry, George Poor. Advisory: Kenneth McCormick, Louise Findley, Paul Geddes. Director May Dances: Alida Gale Curry.

Manager May Breakfast: Jean White. Manager Junior Play: Clarence Emmons.

# ALPHA PHI ALPHAS ELECT OFFICERS FOR NEXT YEAR

### Mary Claufield Installed as President at Meeting on Coming Wednesday

The Alpha Phi Alpha sorority chose its officers for the coming year at the regular meeting Wednesday evening. The officers, who will be installed next Wednesday, are president, Mary Claufield; vice-president, Anna Mary McKinley; manager, Donna Hildesheim; social treasurer, Loretta Varley; financial treasurer Sarah Poor; secretary, Leona Clodier; member-at-large, Dorothy Gordon.

# MISS MELTON LECTURES AT MACDOWELL MEETING

### Franz Peter Schubert is Theme for Musical Program of Salem Club

Monday evening at the Nelson auditorium, the Salem MacDowell club presented a Schubert centennial concert assisted by Miss Frances Virginia Melton in lecture, and also the Schubert Octette. Members of the octette are Eleanor Moore, Eva Roberts, Hilda Amsler, Doris Allen, Dorothy Brant, Grace Fawc, Arbutus Rudie, Ruth Swart, and Myra Gleason. Minnetta Harkers is director and Elva Mae Amsler is accompanist.

**THE BEST**  
Barber Shop is still the best for Willamette Students.  
139 S. Liberty

# MISS CURRY DIRECTS MAY DANCE PRACTICE

### Head of Women's Physical Education Department Directs Preparations for Donces

Under the general direction of Miss Alida Gale Curry for the past few weeks about seventy girls have practiced daily in anticipation of the May Day exercises of this afternoon. Each group has worked under the direction of a leader who has had charge of the practices of a particular group.

The leaders of the different dances together with those who take part in the dances are as follows: Birds: Beulah Wampler, leader; Loretta Fisher, Mary Herschberger, Frieda Falconer, Elsie Allen, Buneva Culbertson, Beulah Wampler.

Crosses: Evangeline Hall, leader; Mildred Cook, Lillian Scott, Dorothy Eetling, Violet Beecher, Dorothy Pemberton, Leah Fanning.

Sunshine: Helen McPherson, leader; Grace Henderson, Kathleen Garrison, Gloria Grafton, Amy Fox, Dorothy Bell, Lorna Chapelle.

Rods: Helen Kafoury, leader; Gladys Miller, Anna Lanke, Beatrice Hartung, Mary Joe Wagner, Vivian Hauge, Helen Kafoury.

Blossoms: Elma White, leader; Louise Brown, Jennie Delzell, Emily Brown, Dorothy Godfrey, Marie Foster, Dorothy Young, Dorothy Brant, Esther Dittenbach.

Butterflies: Agnes Emmel, leader; Harriet Hageman, Agnes Emmel, Hazel Shutt, Mildred Pugh, Pauline Findley.

Pan: Margaret Morehouse. Rain: Margaret Warnke. Duet: Pierrot and Pierrette: Mary Allen, Florence Power.

May Pole Dance: Norabel Pratt, leader; Evelyn Hartung, Margaret Wieneke, Enda Card, Rosa Huston.

Harold Tomlinson who is on the committee making extensive plans for the Conclave states that entertainment for over 700 visiting DeMolays has been arranged. Miss Edith Findley, as President of the Rainbow Girls, has charge of the entertainment of the queens. On Friday night the queens will be entertained at the Junior play at the Capitol Theatre. Saturday afternoon a special tea will be given in their honor.

The war developed many patriots, but none quite so strong as the old shoemaker who gave his awl.

Because a man is shaped like a ham he is not necessarily swift.

**Men's Breeches And Men's Shoes**  
Logger's Shoes and Work Clothing  
**Hillpot & Son**  
305 State  
The Little Store With a Big Stock and Low Prices.  
Trade With Us and Prove It.

**There's No Varsity Drag Here**  
Step across the street from the campus, order a big chocolate malt or a campus lunch and see if there's a drag on your order. It's before you before you know it.  
1230 State St.  
**Greenwood Dairy**

# MISS CURRY DIRECTS MAY DANCE PRACTICE

### Head of Women's Physical Education Department Directs Preparations for Donces

Under the general direction of Miss Alida Gale Curry for the past few weeks about seventy girls have practiced daily in anticipation of the May Day exercises of this afternoon. Each group has worked under the direction of a leader who has had charge of the practices of a particular group.

The leaders of the different dances together with those who take part in the dances are as follows: Birds: Beulah Wampler, leader; Loretta Fisher, Mary Herschberger, Frieda Falconer, Elsie Allen, Buneva Culbertson, Beulah Wampler.

Crosses: Evangeline Hall, leader; Mildred Cook, Lillian Scott, Dorothy Eetling, Violet Beecher, Dorothy Pemberton, Leah Fanning.

Sunshine: Helen McPherson, leader; Grace Henderson, Kathleen Garrison, Gloria Grafton, Amy Fox, Dorothy Bell, Lorna Chapelle.

Rods: Helen Kafoury, leader; Gladys Miller, Anna Lanke, Beatrice Hartung, Mary Joe Wagner, Vivian Hauge, Helen Kafoury.

Blossoms: Elma White, leader; Louise Brown, Jennie Delzell, Emily Brown, Dorothy Godfrey, Marie Foster, Dorothy Young, Dorothy Brant, Esther Dittenbach.

Butterflies: Agnes Emmel, leader; Harriet Hageman, Agnes Emmel, Hazel Shutt, Mildred Pugh, Pauline Findley.

Pan: Margaret Morehouse. Rain: Margaret Warnke. Duet: Pierrot and Pierrette: Mary Allen, Florence Power.

May Pole Dance: Norabel Pratt, leader; Evelyn Hartung, Margaret Wieneke, Enda Card, Rosa Huston.

Harold Tomlinson who is on the committee making extensive plans for the Conclave states that entertainment for over 700 visiting DeMolays has been arranged. Miss Edith Findley, as President of the Rainbow Girls, has charge of the entertainment of the queens. On Friday night the queens will be entertained at the Junior play at the Capitol Theatre. Saturday afternoon a special tea will be given in their honor.

The war developed many patriots, but none quite so strong as the old shoemaker who gave his awl.

Because a man is shaped like a ham he is not necessarily swift.

# MISS CURRY DIRECTS MAY DANCE PRACTICE

### Head of Women's Physical Education Department Directs Preparations for Donces

Under the general direction of Miss Alida Gale Curry for the past few weeks about seventy girls have practiced daily in anticipation of the May Day exercises of this afternoon. Each group has worked under the direction of a leader who has had charge of the practices of a particular group.

The leaders of the different dances together with those who take part in the dances are as follows: Birds: Beulah Wampler, leader; Loretta Fisher, Mary Herschberger, Frieda Falconer, Elsie Allen, Buneva Culbertson, Beulah Wampler.

Crosses: Evangeline Hall, leader; Mildred Cook, Lillian Scott, Dorothy Eetling, Violet Beecher, Dorothy Pemberton, Leah Fanning.

Sunshine: Helen McPherson, leader; Grace Henderson, Kathleen Garrison, Gloria Grafton, Amy Fox, Dorothy Bell, Lorna Chapelle.

Rods: Helen Kafoury, leader; Gladys Miller, Anna Lanke, Beatrice Hartung, Mary Joe Wagner, Vivian Hauge, Helen Kafoury.

Blossoms: Elma White, leader; Louise Brown, Jennie Delzell, Emily Brown, Dorothy Godfrey, Marie Foster, Dorothy Young, Dorothy Brant, Esther Dittenbach.

Butterflies: Agnes Emmel, leader; Harriet Hageman, Agnes Emmel, Hazel Shutt, Mildred Pugh, Pauline Findley.

Pan: Margaret Morehouse. Rain: Margaret Warnke. Duet: Pierrot and Pierrette: Mary Allen, Florence Power.

May Pole Dance: Norabel Pratt, leader; Evelyn Hartung, Margaret Wieneke, Enda Card, Rosa Huston.

Harold Tomlinson who is on the committee making extensive plans for the Conclave states that entertainment for over 700 visiting DeMolays has been arranged. Miss Edith Findley, as President of the Rainbow Girls, has charge of the entertainment of the queens. On Friday night the queens will be entertained at the Junior play at the Capitol Theatre. Saturday afternoon a special tea will be given in their honor.

The war developed many patriots, but none quite so strong as the old shoemaker who gave his awl.

Because a man is shaped like a ham he is not necessarily swift.

# FESTIVITIES OPENED BY STATE EXECUTIVE

### (Continued from page 1)

a special duet dance. The traditional May Pole dance will conclude the exercises in honor of the queen.

Turning down the gas may save matches, but on the other hand it often makes matches.

Many men walk with a shuffle who never played cards in their life.

To avoid falling hair—step out when you see it coming.

T. Pomeroy A. A. Keene  
**POMEROY & KEENE**

Reliable  
JEWELERS and OPTOMETRISTS  
Phone 820  
388 State St. Salem, Ore.

**Welcome Folks**  
*Blue Bird CONFECTIONERY*  
Make Yourself at Home on the Campus  
and don't forget  
The BLUEBIRD is part of the Campus

**"Welcome Guests"**  
**Bertleson & McShane**  
Printing Company  
The Name to Know in Printing  
Phone 779  
Commercial at Chemeketa

**tut tut!**  
*a willamette university professor has discovered a misplaced comma in one of our ads --- if the professor will visit our store we feel sure he will excuse our grammar*  
*because "here," he will find many things to his liking, including shirts, hand made from finest madras and broadcloth shirtings; and neckwear, hand fashioned from imported silks, in plain collars, prints and halterneis; and sweaters, with golf hose to match, hand loomed from soft english yarns; and hats, soft crushers, and smart homburgs; also a wide choice of other timely spring and summer selections.*  
*this store boasts yet another wonder, the very very rare one, of very moderate prices*  
**the man's shop**  
416 State