

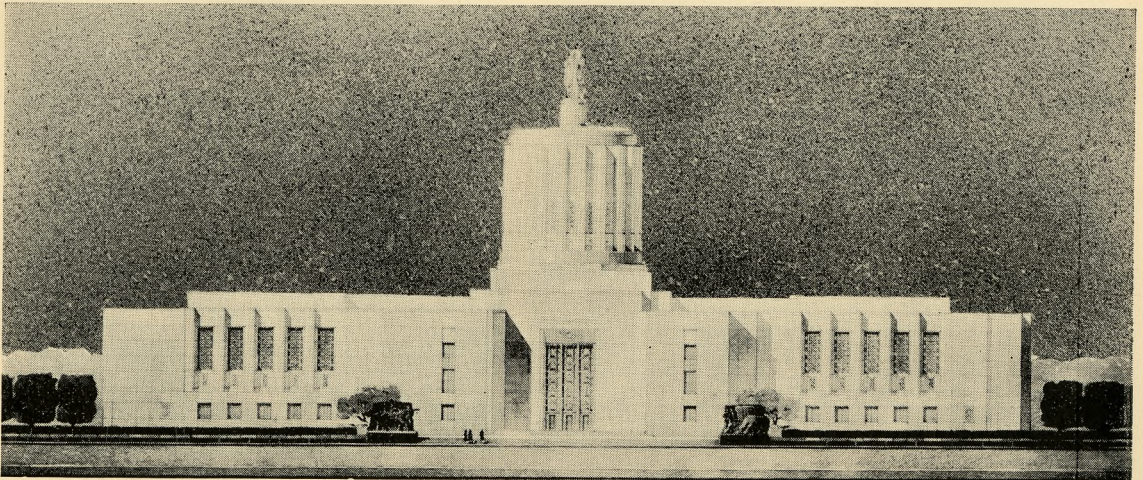
WILLAMETTE UNIVERSITY BULLETIN

**The Departments of Economics
and Political Science
Announce a Curriculum in
Public Administration**

VOL. XXX

August, 1936

No. 4



New Oregon State Capitol Now Under Construction
The Willamette University Campus Is Situated Directly Across State Street



Oregon
State Office
Building

Purpose of the Curriculum in Public Administration

The curriculum in Public Administration was formed

to coordinate more fully the curricula in economics, business administration, political science and public law

to provide a more adequate pre-legal training

to serve those who desire a cultural education with primary attention given to the increasing interrelationship between government and business

to aid those who anticipate public service careers in American government, state, county and city

Upon the completion of the four-year curriculum, the degree of Bachelor of Arts is granted.

Willamette University Affords Unusual Opportunities for the Study of Government

Willamette University is located in Salem, the capital city of Oregon. Salem is a thriving business city of 28,000 population, fifty miles from Portland in the heart of the Willamette Valley

The University campus faces the civic center in which are located the magnificent new capitol (now under construction) the state supreme court building, the state office building and the county court house. The city hall and the business section are but a five-minute walk from the campus. The majority of the state institutions are located within a short distance from the campus. The legislative sessions, state offices, state court, and state institutions offer the student unusual opportunities for study and observation.

Instructional Committee on Public Administration

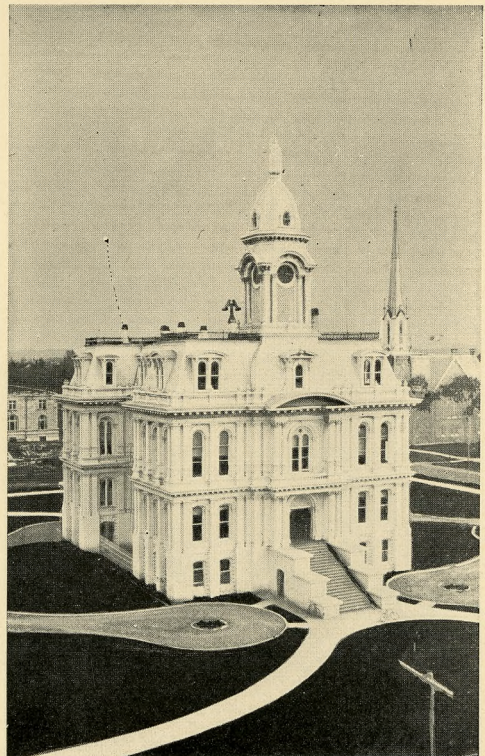
Bruce R. Baxter, A.M., S.T.B., D.D., LL.D., President of the University *ex officio*.

Frank M. Erickson, A.M., Ed.D., Dean of the University *ex officio*.

William C. Jones, M.B.A., Associate Professor of Economics and Business Administration, Chairman.

Robert Moulton Gatke, Ph.D., Professor of History and Political Science.

Ray L. Smith, A.B., LL.B., Professor of Public Law



Marion County Courthouse



Waller Hall, Home of the College of Law
Willamette University

Required Courses

Freshman and Sophomore Years

American National Government	2 hours
State and Local Government	2 hours
Principles of Accounting	6 hours
Principles of Economics	6 hours

Junior and Senior Years

Constitutional Law	3 hours
Introduction to Public Administration	3 hours
State and County Administration	3 hours
Municipal Administration	3 hours
Statistics	3 hours
Public Finance	3 hours
Administrative Law	2 hours
Municipal Corporations	2 hours
Senior Thesis Round-table	2 hours

RECOMMENDED ELECTIVES

Freshman and Sophomore Years

Fundamentals of Law	3 hours
American History	6 hours
Psychology	4 hours
English History	8 hours

Junior and Senior Years

Municipal Accounting	2 hours
Money and Banking	3 hours
Political Parties	3 hours
Social Psychology	3 hours
Corporation Finance	3 hours
History of Political Theory	2 hours

For further information, address
Chairman, Instructional Committee on Public
Administration
Willamette University

Willamette University Has Foremost Recognition as An Educational Institution

Willamette University is accredited by the
Association of American Universities
Oregon State Department of Education
Pacific Northwest Association of Colleges
and Secondary Schools
American Council on Education
Association of American Colleges
American Association of University Women

Course of Study

The purposes set forth are intended to be achieved in harmony with the true objectives of the liberal arts college. These require a thorough grounding in economic and political theory. At the same time they offer an opportunity for consideration of those practical problems of administration in government which will, under present conditions, be the certain responsibility of the intelligent citizen, as well as of those who are chosen to serve the state in an administrative capacity.

The major emphasis of the curriculum in Public Administration is upon political science, public law, economics and business administration. Courses in biology, literature, philosophy, ethics, mathematics, sociology and religion should have liberal allowance in the student's elective program. The following required courses are of primary importance in attaining the objectives of the curriculum.



Salem City Hall



View of
Willamette University
Campus Showing
Eaton and Waller Halls

WILLAMETTE UNIVERSITY

FOUNDED 1842

The College of Liberal Arts

The College of Law

The School of Music

For complete catalog, address

THE REGISTRAR

Willamette University, Salem, Oregon

Willamette University Bulletin

VOL. XXX

August, 1936

No. 4

Entered at the Postoffice at Salem, Oregon, as Second Class Matter, July 27 1908, under
the Act of July 16, 1894