

ANNUAL CATALOGUE
— OF —

Willamette University

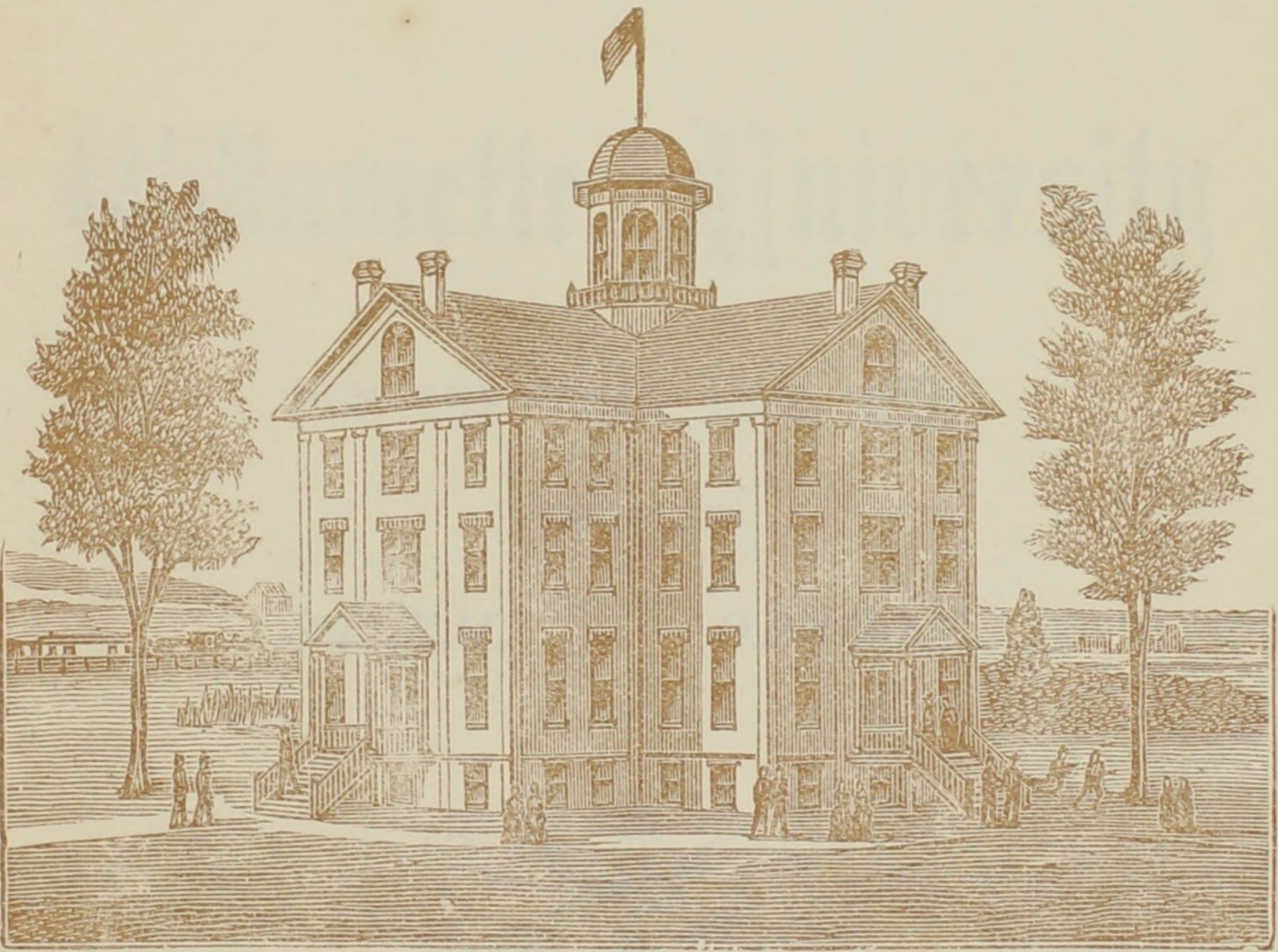
— FOR —

1890---1891

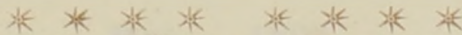
SALEM, = = OREGON.

Willamette - University

LOCATED AT



SALEM, - - OREGON.



⌋ CATALOGUE ⌋

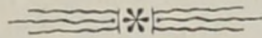
OF THE

OFFICERS AND STUDENTS

OF

Willamette University

FOR THE YEAR 1890, 1891.



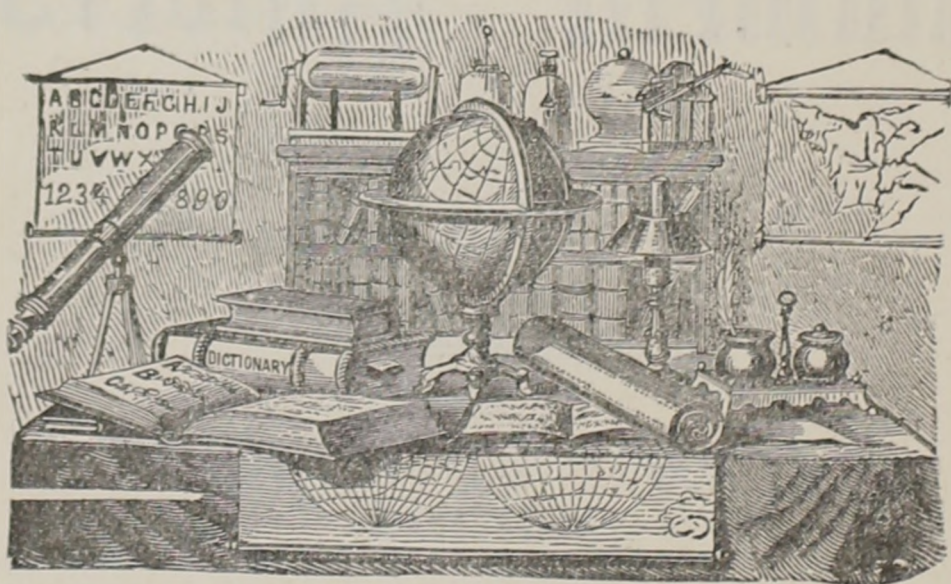
SALEM, - OREGON.



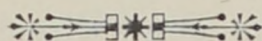
SALEM, OREGON.

F. S. Dearborn, Power Printer and Bookbinder.

• May, 1891.



CALENDAR.



1890.

- April 6.—Commencement of College of Pharmacy.
April 6.—Commencement of Medical Department.
May 31.—8 P. M., Lecture by Rev. C. C. Stratton, D. D.
June 2.—Annual College Prayer Meeting.
June 5.—Reunion of Literary Societies.
June 7.—Baccalaureate Sermon, by Rev. Geo. C. Wilding, D. D.
June 7.—University Sermon, by Rev. Stanley O. Royal, A. M.
June 8.—Prize Contest in Orations and Popular Concert.
June 9.—Annual Trustee Meeting, Graduating Exercises of University Academy.
June 10.—Alumni Day, Conservatory Commencement, Business Meeting and Reunion of Alumni.
June 11.—Commencement of College of Liberal Arts, Address by Bishop Fowler, Reunion of Conservatory Alumni.
September 7.—First Term begins, Theological Department opens.
September 16.—Law Department opens.
October 6.—Medical Department opens.
November 16.—Second Term begins.

1891.

- February 1.—Third Term begins.
March 26.—Arbor Day.
April 11.—Fourth Term begins.
June 16.—Commencement.
September 5.—First Term begins.

VACATIONS.

One week at Christmas, and all legal holidays.

NOTICES.

1. Students may enter at any time, but are advised to make arrangements to enter at the beginning of terms.
2. Subjects for Commencement Orations must be handed to the President by March 1, and orations must be completed by May 1.

TO STUDENTS.

When you arrive in Salem, come directly to see the President, who will give you all necessary information relative to rooms, board, etc., and will find lodging for you until you are permanently settled. You will thus save your money and find out just what to do.

BOARD OF TRUSTEES.

Elected by the Board.

| NAME. | RESIDENCE. | TERM EXPIRES. |
|--------------------------|--------------|---------------|
| LEO WILLIS..... | Salem..... | 1893 |
| MRS. G. W. GRAY..... | Salem..... | 1893 |
| C. B. MOORES..... | Salem..... | 1893 |
| L. L. ROWLAND..... | Salem..... | 1892 |
| MRS. MARY E. KINNEY..... | Astoria..... | 1892 |
| R. S. WALLACE..... | Salem..... | 1892 |
| F. R. SMITH..... | Salem..... | 1891 |
| M. C. WIRE..... | Salem..... | 1891 |
| A. N. BUSH..... | Salem..... | 1891 |
| THOS. VAN SCOY..... | Salem..... | Ex-Officio |

Elected by the Alumni.

| | | |
|----------------------------|------------|------|
| MRS. AMELIA E. MILLER..... | Salem..... | 1893 |
| GEO. P. HUGHES..... | Salem..... | 1892 |
| GEORGE B. GRAY..... | Salem..... | 1891 |

Elected by the Oregon Conference.

| | | |
|-----------------------|--------------------|------|
| W. S. HARRINGTON..... | Portland..... | 1893 |
| MRS. MARIA SMITH..... | Portland..... | 1893 |
| JAMES ABRAHAM..... | East Portland..... | 1893 |
| JOHN KENWORTHY..... | East Portland..... | 1893 |
| N. DOANE..... | Salem..... | 1892 |
| M. C. WIRE..... | Salem..... | 1892 |
| W. H. ODELL..... | Salem..... | 1892 |
| J. E. HAZELTINE..... | Portland..... | 1892 |
| J. L. PARRISH..... | Salem..... | 1891 |
| F. P. TOWER..... | Salem..... | 1891 |
| E. P. FRAZER..... | Portland..... | 1891 |
| G. W. STAVER..... | Portland..... | 1891 |

Elected by the Columbia River Conference.

| | | |
|-------------------|------------------------|------|
| S. GASCOIGNE..... | Fort Simcoe, Wash..... | 1891 |
|-------------------|------------------------|------|

| | | |
|---------------------|---------------------------|------|
| N. E. PARSONS..... | | 1891 |
| H. K. HINES | Boise City, Idaho | 1890 |
| W. G. SIMPSON | The Dalles | 1890 |
| D. G. STRONG | Walla Walla, Wash. | 1889 |
| W. C. GRAY..... | Spokane Falls, Wash. | 1889 |

Elected by the Puget Sound Conference.

| | | |
|------------------------|---------------------|------|
| ISAAC DILLON | Lopez, Wash. | 1892 |
| F. J. MASSEY | Tacoma | 1892 |
| A. J. HANSON. | Portland | 1891 |
| JOHN N. DENNISON. | Port Townsend. | 1891 |
| D. G. Le SOURD. | Whatcom. | 1891 |
| D. D. CAMPBELL. | | 1891 |

Elected by the Idaho Conference.

| | | |
|-----------------------|------------------|------|
| H. K. HINES..... | Salem..... | 1893 |
| S. M. DRIVER..... | Boise City..... | 1893 |
| G. M. IRWIN | Chemawa | 1892 |
| J. H. SKIDMORE..... | Boise City | 1892 |
| J. H. WOOD..... | Baker City..... | 1891 |
| S. O. SWACKHAMMER.... | La Grande..... | 1891 |

Officers of the Board of Trustees.

| | | |
|--------------------------|----------------------------|-------|
| PRESIDENT | W. H. ODELL..... | Salem |
| SECRETARY..... | GEO. P. HUGHES..... | Salem |
| TREASURER..... | A. N. BUSH..... | Salem |
| ENDOWMENT AGENT. ... | PRESIDENT..... | Salem |
| EXECUTIVE COMMITTEE..... | Trustees residing in Salem | |

FACULTIES OF INSTRUCTION AND GOVERNMENT.

College of Arts and Sciences.

REV. THOMAS VAN SCOY, D. D., PRESIDENT.,

Professor of Ancient Languages.

MISS MATTIE L. HANSEE, A. M., DEAN WOMAN'S COLLEGE,

French and Latin.

WM. S. ARNOLD, A. M.

Professor of Natural History and English Literature.

THOMAS C. JORY, A. M.

Professor of Mathematics.

S. ASBURY STARR, A. M., B. D.,

Professor of Natural Science and History.

MISS MINNIE CUNNINGHAM, B. S.,

Principal of Grammar School.

MISS STELLA AMES, B. S.,

Professor of Elocution and Oratory.

College of Medicine.

E. P. FRASER, M. D.,

Professor of Diseases of Women and Children.

P. R. YOUNG, M. D.,

Professor of Physiology and Hygiene.

C. H. HALL, M. D.,

Professor Theory and Practice of Medicine and General Pathology.

H. REESE HOLMES, M. D.,

Professor of Principles and Practice of Surgery.

RICHMOND KELLY, A. M., M. D.,

Professor of Obstetrics and Microscopy.

F. CAUTHORN, M. D.,

Professor of Descriptive Anatomy and Clinical Surgery.

WM. BOYS, M. D.,

Professor of Diseases of Women and Clinical Medicine.

J. W. FRAZEY, M. D.,

Professor of Materia Medica and Therapeutics.

G. O. JEFFERSON, M. D.,

Professor of Chemistry and Toxicology.

W. E. CARLL, M. D.,

Professor of Practical and Surgical Anatomy.

W. B. WATKINS, M. D.,

Professor of Diseases of Eye, Ear, Throat and Nose.

Lectures on Special Subjects, Etc.

HON. M. C. GEORGE,

Medical Jurisprudence.

LEWIS F. ROSS, B. A., M. D.,

Physical Diagnosis and Hygiene.

D. H. RAND, M. D.,

Genito-Urinary Organs and Dermatology.

GEO. H. CHANCE, D. D. S.,

Dental Pathology.

A. M. MOORE, M. D.,

Demonstrator of Anatomy.

E. P. FRAZER, M. D.,

RICHMOND KELLY, A. M., M. D.,

Dean.

Secretary.

College of Law.

GEO. G. BINGHAM, LL. B., DEAN.

GEO. H. BURNETT, Esq.,

Professor of Law of Contracts, Torts and Commercial Law.

WM. H. HOLMES, Esq.,

Professor of Criminal Law, Constitutional Admiralty, and Maritime Law.

S. T. RICHARDSON,

Professor of Common Law and Law of Evidence.

College of Theology.

REV. NEHEMIAH DOANE, D. D., ACTING DEAN,

Professor of Systematic Theology,

REV. H. K. HINES, D. D.,

Professor of Historical Theology.

Conservatory of Music.

Z. M. PARVIN, DIRECTOR.

Professor of Piano, Organ, Voice, Theory, Composition, and Class Teaching.

MISS EDITH HARRIS,

Teacher of Piano, Organ and Harmony.

ASSISTANT TEACHERS.

MISS LULU SMITH,

Piano and Organ.

MISS LEONA WILLIS,

Piano, Organ and Voice.

MISS HALLY PARRISH,

Vocal Culture.

MISS MAMIE PARVIN,

Piano and Organ.

College of Pharmacy.

E. P. FRAZER, M. D., DEAN.

ALOIS SOMMER, M. D.,
Professor of Chemistry.

W. E. CARLL, M. D.,
Professor of Materia Medica.

JOHN M. A. LAUE, PH. G.,
Professor of Theory and Practice of Pharmacy.

P. R. YOUNG, M. D.,
Professor of Botany.

RICHMOND KELLY, A. M., M. D.,
Professor of Microscopy.

Art Department.
MISS MARIE CRAIG.

Emeritus Profssors.

L. L. ROWLAND, M. D., F. R. S.
Physiology and Microscopy.

RODNEY GLISON, M. D.,
Obstetrics.

D. PAYTON, M. D.,
Diseases of Women and Children.

HONORS OF THE UNIVERSITY.

Degrees Conferred in 1890.

Bachelor of Arts.

Lewis Franklin Belknap, Allyn H. Cooke, Susie Harrington, Levi Magee, N. M. Newport, Virgil Peringer, William E. Perry, Stanton W. Stryker, Olive F. Tower.

Bachelor of Philosophy.

Elvara Victor.

Bachelor of Laws.

John O'Shea, Samuel B. Crandall.

Doctor of Medicine.

Wm. F. Amos, F. R. Ballard, H. E. Beers, O. K. Beers, A. W. Botkin, B. A. Cathey, Josephine Callahan, H. Vance Clymer, Laura A. Harris, Mary A. Hewitt, Charles E. Hill, Sarah S. Marquam, Robert J. Pilkington, D. T. Riddle, E. A. Sommer, J. W. Weatherford.

Graduates in Music.

Edna Adams, Jessie Glenn, Alice Ghandler, Edith Harris, Ada Nesbitt, Nellie Price, Mary Steiner, Nellie Southwick, Daisy Settlemier, Etta Stratton.

Doctor of Laws.

Rev. J. W. Wythe, D. D.

PRIZES.

To J. J. Fitzgerald, fifteen dollars, awarded by Rev. Ross C. Houghton, D. D., for excellence in literary composition.

To N. M. Newport, ten dollars, awarded by Dr. Houghton, for excellence in literary composition.

To Alfred Thompson, five dollars, by Dr. Houghton, for excellence in literary composition.

To Eva Foster, honorable mention for excellence in literary composition.

To Blanche Lamont, silver medal, by W. C. T. U., for excellence in elocution.

SCHEDULE OF RECITATIONS,---FIRST TERM.

| | | | | | |
|-------------------------|----------------|-----------------------------|---------------------------------------|---------------------|----------------------------------|
| Latin. | Algebra. | Chemistry. | Bookkeeping and Writing. | Herodotus. | Political Geograph'y |
| Greek. | Trigonometry. | Grammar. | Rhetoric and Synonyms. | | El. Geography. |
| Homer. | El. Algebra. | Physics. | Zoology. | Cicero De Senectute | Mental Arithmetic. |
| German. | Geometry. | U. S. History. | Bookkeeping. | Cicero, Orations. | Reading. |
| Hebrew. | Arithmetic, B. | Ancient History. | Political Economy, International Law. | Virgil. | Writing, Spelling |
| Demosthenes and Horace. | Calculus. | Analogy and Mental Science. | Physiology. | Grammar. | El. Arithmetic and Calisthenics. |
| Greek Testament. | Arithmetic, A. | Ethics. | Writing. | French. | Arithmetic. |

SECOND TERM.

| | | | | | |
|-------------------------|---------------|-----------------------------|------------------------------------|---------------------|----------------------------------|
| Latin. | Algebra. | Chemistry. | Bookkeeping and Writing. | Herodotus. | Political Geograph'y |
| Greek. | Trigonometry. | Grammar. | Rhetoric and Synonyms. | Cicero De Amicitia. | El. Geography. |
| Homer. | El. Algebra. | Physics. | Zoology. | Cicero, Orations. | Mental Arithmetic. |
| German. | Geometry. | U. S. History. | Bookkeeping and International Law. | | Reading. |
| Hebrew. | Arithmetic B. | Ancient History. | Biology and Political Economy. | Virgil. | Writing & Spelling. |
| Demosthenes and Horace. | Calculus. | Analogy and Mental Science. | Physiology. | Grammar. | El. Arithmetic and Calisthenics. |
| Greek Testament. | Arithmetic A. | History of Civilization. | Writing. | French. | Arithmetic. |

SCHEDULE OF RECITATIONS---THIRD TERM,

| | | | | | |
|---|----------------|-------------------------|------------------------------------|----------|-----------------------------------|
| Latin. | Algebra. | Logic. | Bookkeeping. | Plato. | Physical Geograp'y |
| Greek. | Analytics. | History, Grammar. | Mineralogy. | Livy. | E'l. Geography. |
| Memorabilia. | E'l. Algebra. | Physics. | English Literature, Bookkeeping. | Ovid. | Mental Arithmetic. |
| German. | Geometry. | Natural Philosop'y | Geology. | Grammar. | Reading. |
| Hebrew. | Arithmetic, B. | Ancient History. | Commercial Law & Letter Writing. | | Writing & Spelling. |
| Tacitus & evidences of Christianity. | Calculus. | Descriptive Astronomy. | Constitution of U. S. and Writing. | Virgil. | E'l. Arithmetic and Calesthenics. |
| Gr'k testam't, theo. & Prac. of Teaching. | Arithmetic, A. | Mathematical Astronomy. | Botany. | French. | Arithmetic. |

FOURTH TERM,

| | | | | | |
|---|----------------|-------------------------|------------------------------------|----------|-----------------------------------|
| Latin. | Algebra. | History of Philosophy. | Bookkeeping. | Plato. | Physic'l geography |
| Greek. | Analytics. | History & grammar | Mineralogy. | Livy. | E'l. Geography. |
| Memorabilia. | E'l. Algebra. | Physics. | English Literature & Bookkeeping. | Ovid. | Mental Arithmetic. |
| German. | Geometry. | Natur'l Philosophy | Geology. | Grammar. | Reading. |
| Hebrew. | Arithmetic, B. | Ancient History. | Commercial Law & Letter Writing. | | Writing, Spelling |
| Tacitus and Natural Theology. | Calculus. | Descriptive Astronomy. | Constitution of U. S. and Writing. | Virgil. | E'l. Arithmetic and Calesthenics. |
| Gr'k testam't, theo. & prac. of teaching. | Arithmetic, A. | Mathematical Astronomy. | Botany. | French. | Arithmetic. |

LECTURES, CONCERTS AND RECITALS.

October, Three Literary Lectures by Hon. Mr. Armstrong.
February, Lecture by Hon. Geo. H. Williams, Divinity of Christ.
February, by Mr. Williams, The Power of Unseen Forces.
Entertainment in Elocution by Miss Ames and pupils.
Entertainment in Elocution, by Miss Griffin.
Concert and Dramatic Entertainment, by Alba Heywood.

Conservatory Concerts and Recitals.

December 3d, Musical Recital at University Chapel.
January 14th, Musical Recital, University Chapel.
January 28th, Grand Patriotic Concert, University Chapel.
February 27th, Musical Recital.
March 18th, Mendelssohn Recital, University Chapel.
May 8th, Piano and Organ Recital.
May 27th, Musical Recital.
June 5th, Musical Recital, University Chapel.

GENERAL STATEMENT.

LOCATION.

Salem, the capital of Oregon, is most beautifully situated on the east bank of the Willamette river, fifty-three miles south of Portland. Rich farm land lies on all sides and extends away for many miles. The scenery is delightfully varied by hills on the south and across the river on the west. The streets are wide and have a considerable decline westward toward the river. Several living streams of water flow through them into the Willamette, and in their course turn the powerful wheels of the great flouring mills, of which Salem is justly proud. It contains a population of nearly 12,000. The Willamette University, founded at a time when Salem was scarcely a town-site, has had the opportunity to grow with the city and impress its work upon the society. For morals and high state of Christian society, Salem is far in advance of most towns of its size. The official position of so many of its residents, in county and State, render an increased culture to society. Many of the State educational institutions are located here, with their officers and teachers, which circumstance adds another advantage to the location of a University. The buildings are immediately in town, and places of business are of easy access. The campus on which the buildings are situated contains about eighteen acres. The people of Salem have ever given non-resident students a cordial welcome to their homes, their churches and society, so that, although among strangers at first, they are soon made to feel that they are among friends desiring and striving for their best interests. All circumstances combine to make Salem the best University town on the coast. It is not too large, so as to absorb the interests of a University in its business affairs, and it is not so small as to be unable to accommodate all its interests.

Expenses.

BOARD.

| | |
|--|--------------|
| In Woman's College, with nicely furnished rooms, per week | \$ 3 50 |
| With unfurnished rooms, per week | 3 00 |
| Day board at Woman's College, per week | 2 50 |
| Day board at Young Men's Boarding Hall, per week | 1 50 to 1 75 |
| Unfurnished rooms outside of school, per month | 2 00 to 3 00 |
| Private board outside of school, per week | 3 50 to 4 00 |
| Rooms in the University building, per month | 1 00 |
| Board and tuition a year in the University, to young ladies, with everything furnished | 184 00 |
| Board and tuition a year in the University, to young men, with unfurnished rooms | 114 00 |

TUITION PER TERM.

| | |
|---|-------|
| College of Liberal Arts | 13 00 |
| Academy | 11 00 |
| Business Department | 12 00 |
| Grammar School, First Grade | 8 00 |
| Grammar School, Second Grade | 6 00 |
| Law College—(see statement of Law College.) | |
| Medical College—(see statement of Medical College.) | |
| Music—(see Conservatory of Music.) | |
| Elocution per term, in class | _____ |

Many of the students board themselves for \$1 00 per week.

Tuition of ministers and children of ministers in regular work, half price.

Literary Exercises.

Special drill will be given in composition, elocution and general literary exercises throughout all the courses of study. These exercises are additional to those mentioned in the curricula.

Every student in school is expected to perform literary work the third Thursday of each semi-term, unless excused for equivalent work in Literary Societies or in Elocutionary classes.

Literary Societies.

There are two literary societies connected with the school. They have a commodious and well-furnished hall in the University building. The Philodosian society meets at 3 P. M., and the Philodorian at 7 P. M., on Friday of each week. The objects of these societies are to increase knowledge among the members and to bring into practical use the mental drill obtained during the week; experience having shown that these are more readily acquired by a combination of efforts than singly.

Officers of Philodosian Society for the school year.

| | First Term. | Second Term. |
|----------------------------|---------------------------|------------------|
| President, | Minnie Fricky | Carrie Gleason |
| Vice President | Eva Bruce | Carrie Bradshaw |
| Secretary | Mabel Janes | Myrtie Marsh |
| Treasurer | Carrie Bradshaw | Nellie Carpenter |
| Censor | Eva Foster | Florence Smith |
| Sergeant-at-Arms | Edith Frizzelle | Grace Bushnell |
| Librarian. | Ollie Rounds | Ida Paul |
| Custodian | Rosa Moore | Gertie Cleaver |

| | Third Term. | Fourth Term. |
|----------------------------|---------------------------|-----------------|
| President | Mabel Janes | Eva Foster |
| Vice President | Eva Bruce | Minnie Lansing |
| Secretary | Eva Foster | Carrie Bradshaw |
| Treasurer | Edith Frizzelle | Florence Smith |
| Censor | Myrtie Marsh | Alma Mills |
| Sergeant-at-Arms | Ollie Rounds | Ivy Eastham |
| Librarian | Belle Aitkin | Ollie Rounds |
| Custodian | Rosa Moore | Rilla McCulloch |

Officers of the Philodorian Society:

| | First Term. | Second Term. |
|-------------------------------|-----------------------|----------------|
| President | F. L. Moore | B. L. Steeves |
| Vice President | F. J. Brown | S. C. Dodson |
| Secretary | C. C. Kerns | G. G. Spalding |
| Assistant Secretary | L. Reynolds | A. A. Stafford |

| | | |
|-----------------------|---------------------|----------------|
| Censor..... | H. N. Rounds..... | G. A. Reichman |
| Treasurer..... | A. W. Bagley..... | O. A. White |
| Librarian..... | A. A. Stafford..... | O. Eastham |
| Sergeant-at-Arms..... | Wm. Heerdt..... | B. B. Barker |

Third Term.

Fourth Term.

| | | |
|--------------------------|---------------------|----------------|
| President..... | G. A. Reichman..... | J. F. Ailshie |
| Vice President..... | C. H. Spalding..... | J. H. Foley |
| Secretary..... | F. E. Brown..... | J. H. Skidmore |
| Assistant Secretary..... | J. H. Skidmore..... | D. H. Glass |
| Censor..... | C. G. Pence..... | G. G. Spalding |
| Treasurer..... | A. N. Nelson..... | C. G. Pence |
| Librarian..... | F. C. Mathews..... | S. Thurlow |
| Sergeant-at-Arms..... | W. D. Johnston..... | J. A. Coffey. |

The Ministry.

Applicants for the advantages of reduced rates granted to ministerial students, are required to produce either a local preachers' license or a recommendation from some Quarterly Conference, after the following form:

"We, the members of the Quarterly Conference of..... Station, or Circuit, do hereby certify that..... is, in our judgment, called of God to the work of the ministry; and we cordially recommend him as a suitable person to be received as a student in Willamette University to prepare for such work."

Students preparing for the ministry who need assistance, can usually receive loans to the amount of \$100 a year from different educational societies. Information can be obtained by addressing Rev. Chas. H. Payne, D. D., Corresponding Secretary of the Board of Education, 805 Broadway, New York.

Self Support.

A number of places can usually be obtained in private families where young ladies may do some work for home and board while attending school. Many young men pay a part of their school expenses by doing work out of school hours and on Saturday. Some have entirely paid their way in school by this means. Work of this

kind is generally obtained by the persevering and energetic.

Library.

The following addition to the books of the library has been made during the past year:

Those received from different sources, sixteen volumes.

There are now about 3500 books in the library. Many pamphlets, magazines and papers are received for the use of the reading room.

A member of the senior class is appointed Librarian from year to year. S. W. Stryker has been Librarian for the year of 1888-'89. No book shall be kept out longer than two weeks at one time. The holder will be charged ten cents a day for the time a book is held longer than two weeks.

Any damage to books other than the moderate wear, and the loss of books, must be made good.

Military Tactics.

Company A. Willamette Cadets, has been organized. Much needed exercise and knowledge of military tactics, as well as neatness in personal habit, and precision and grace in all the movements of the body, are learned in the various forms of drill. The guns used in the manual of arms have been presented for use of the University by the State of Oregon. Boys and young men attending the University can purchase uniform suits for \$12 to \$15. The clothing is of fine cloth and can be worn on any occasion.

Officers: Captain, W. R. Alderson; First Lieutenant, N. M. Newport; Second Lieutenant, Frank Hughes.

Correlated Academies.

It is the design of these schools so prepare students as nearly as possible for the Freshman class in the College.

Certificates from the Correlated Academies will give the student bearing them the desired standing in the University without an examination on the studies embraced in the certificates.

These Academies are: Wasco Independent Academy, R. H. Willis,

A. M., Principal, located at The Dalles, Oregon; Umpqua Academy, located at Wilbur, Oregon,, Principal; Sheridan Academy, located at Sheridan, Oregon, Principal; Santiam Academy, located at Lebanon, Prof. Torbet, Principal; Drain Academy, Willis C. Hawley, A. B., LL. B., Principal.

Government.

The government of the University aims to be mild but firm in what few regulations it has. Constant thought is exercised to cultivate qualities of manhood and womanhood discoverable in nearly every student. Whenever a student aims to do right, and be diligent and successful in his daily work, he scarcely realizes that he is under government. While the general oversight has especial care for Christian training, yet the school is non-sectarian in its teaching and government. Its courses of study are little different from any other institution of equal grade.

Needs of the University.

Large and immense additions to the funds of the University are much needed. One or two professorships should be established at once.

A suitable hall for recitations in the College of Liberal Arts must be erected in the near future. Thoroughly to equip this institution upon the plan proposed, resources several times greater than any now possessed will be absolutely necessary. The Trustees cannot doubt but that the friends of the school and public-spirited men and women will create the needed facilities. The university is now only beginning to live. The character of its life will depend upon the help of those who have money, and who have such love for Christian training as to bestow it upon the institution for this purpose. The corporate name of the institution is Willamette University.

Form of Bequest.

I give and bequeath to Willamette University the sum of dollars, to be safely invested as an endowment for the support of Professorship in the College of Liberal Arts.

Rules.

After long experience, the following rules are found to secure the best general government of the school. It is thought best to publish our rules in order that all may understand clearly under what restrictions they place themselves by becoming students of this University. No well regulated institution can succeed without rules of general government any more than the State without laws.

General Rules.

1. Payment of tuition, each term, in advance.
2. Attendance at some church on Sunday morning.
3. Study during recitation hours, and from 7 to 9 P. M.
4. No profanity or the use of tobacco in the school.
5. Attendance at chapel services each day.
6. Permission for temporary absence from school and town.
7. Examination every five weeks in the Academy; every term in the College. Written reports in scholarship and deportment will be sent to the parents of each student after every examination.
8. Half price for one study in school; full price for two or more. Students having studies in more than one grade will pay the tuition of the higher grade, provided they take two or more studies in that grade.
9. Time lost by sickness can be transferred, but no money is refunded.
10. Students coming from other Colleges must bring recommendations from the College they left.
11. No student will be entered at the beginning of the term for less than a term; nor will any student having withdrawn from school during the term without permission of the faculty, be granted an honorable dismissal.
12. No student is allowed to board at a hotel or public boarding house.

Normal Instruction.

Special training is provided for those students who are preparing for the profession of teaching. An English course, consisting of such studies as are considered most practicable for teachers of high school and common school grade, has been arranged. Students completing this course of studies are awarded diplomas. It has become very popular with those who desire a good practical English education. Those who have pursued studies in other good schools, and wish to take advanced standing in this, as well as any of the other courses laid down in this Catalogue, can do so by presenting a certificate of scholarship in the schools which they have left. In addition to the regular course of normal study, lectures on the theory and practice of teaching are given by the President and prominent educators of the State actually in the work of teaching; so that the student not only obtains a good education, but also learns the most advanced and best methods of instruction. The success with which graduates from this school are meeting in almost every county of the State, and in other States and Territories, is of great encouragement to the authorities of this institution.

Those who complete the course will be able to pass an examination for a Life Diploma in the State of Oregon, or for other grades of certificates, both State and county. It will be seen that this course embraces more studies than are included in the list for the highest State Diploma. Branches required for a State and Life Diploma:

| | | |
|--------------------|---------------------|-----------------------|
| Orthography, | U. S. History, | Plane Geometry, |
| Reading, | Theory and Practice | English Literature, |
| Penmanship, | of Teaching, | Bookkeeping, |
| Des. Geography, | School Law of Or., | General History, |
| Ment'l Arithmetic, | Composition, | Nat'l Philosophy, |
| Writ'n Arithmetic, | Rhetoric, | Constitution of U. S. |
| Eng. Grammar, | Physiology, | |
| Phys. Geography, | Algebra, | |

Young Men's Board.

Good rooms at a charge of \$1.00 a month for each room, and ta-

ble board at \$1.50 and \$1.75 per week. In this way, two boys have generally roomed together and reduced their room rent to fifty cents each per month.

The design is to charge the young men for board only what the material and cooking cost. For the price, the board has been very satisfactory, and supplies a long felt want in the University.

The young men are expected to supply furniture for their own rooms. This will cost from \$6 to \$15 each, according to the value of the furniture. Many buy second-hand furniture. All furniture can be re-sold when the students leave. Furniture can be left in the rooms, and no room-rent is charged during vacation. Bed clothing can be brought in a trunk or box and save buying.

Board for five weeks in advance and room rent for the year in advance is charged. Any one being away for more than one week at a time, on account of sickness, will be given credit on board for time lost, but room rent will be transferred. The greatest care has to be taken to meet expenses in boarding at such low rates. Board and tuition for the school year will cost from \$92 to \$112 according to the advancement of the student.

In regard to the board of young ladies and girls, see "Woman's College."

DEPARTMENTS.

The Willamette University comprises:—

1. College of Liberal Arts, located at Salem, Oregon.
2. College of Law, located at Salem, Oregon.
3. College of Medicine, located at Portland, Oregon.
4. College of Theology, located at Salem, Oregon.
5. Woman's College, or Ladies' Boarding Hall, located at Salem, Oregon.
6. Conservatory of Music, located at Salem, Oregon.
7. Art Department.
8. University Academy, located at Salem, Oregon.
9. Besides these departments there are four Correlated Academies, viz: Umpqua Academy, Wilbur, Oregon; Sheridan Academy, Sheridan, Oregon; Santiam Academy, Lebanon, Oregon; Drain Academy, Drain, Oregon; and Wasco Independent Academy, The Dalles, Oregon.

Correspondence.

Those desiring information concerning the University in general or the Literary Departments, should write to T. Van Scoy, President, Salem.

Concerning College of Law, George Bingham, Dean, Salem.

Concerning College of Medicine, Dr. E. P. Fraser, Dean, Portland, Oregon.

Concerning Woman's College, Miss Mattie L. Hansee, Dean, Salem.

Concerning Conservatory of Music, Z. M. Parvin, Director, Salem.

Concerning Art Department, Miss Marie Craig, Principal, Salem.

Concerning Elocution and Oratory, Miss Stella Ames, Salem.

COLLEGE OF LIBERAL ARTS.

Information.

The College of Liberal Arts provides instruction in three different courses of study:

1st. The Classical, embracing four years, is similar to that taught in other institutions of equal grade.

2d. Latin and Scientific Course, embracing four years of study, is prepared for those who desire special work in mathematics and modern languages, and do not wish to study the Greek.

3d. Literature and Art Course, embracing four years, is prepared for those who wish to pursue music and art, and substitute the work done on either of those branches for some of the more advanced studies of language and mathematics.

Requirements for Admission to the Freshman.

CLASSICAL COURSE—LATIN.—Grammar, Etymology, Syntax, Prosody, first two books of Cæsar, four orations of Cicero, four books of Virgil, and Jones' Latin Prose Composition.

GREEK.—Grammar, Etymology, Syntax and Prosody, two books of Xenophone's Anabasis, three books of Homer's Iliad, and Jones' Greek Prose Composition.

MATHEMATICS.—Arithmetic, Practical and Higher, Elementary Algebra, Higher Algebra to Quadratics, and Plane Geometry.

SCIENCE.—Ancient and Modern Geography, Physical Geography, Physiology, Natural Philosophy, Elements of Astronomy.

ENGLISH.—History of the United States, Outlines of General History, a thorough knowledge of English Grammar and Composition.

LATIN AND SCIENTIFIC COURSE.—Same as Classical, except one year of German and one of French instead of Greek.

LITERATURE AND ART.—Same as Latin and Scientific.

Degrees Conferred.

Those completing the Classical course will receive the degree of Bachelor of Arts.

Those completing the Latin and Scientific course will receive the degree of Bachelor of Philosophy.

Those completing the course of Literature and Art will receive the degree of Bachelor of Literature.

The degrees of Master of Arts, Master of Philosophy, and Master of Literature will be conferred on those having finished the above courses leading to these degrees, three years after graduation; provided, that since graduation they have sustained a good, moral character, and have pursued some literary or scientific calling, or spent one year in the College.

Candidates for the Master's degree should apply to the President of the University two weeks before Commencement.

The application must be accompanied by a fee of five dollars to pay for diploma.

Students completing any of these courses will, on application, be granted a State diploma to teach in the State of Oregon without further examination.

THEOLOGICAL DEPARTMENT.

REV. T. VAN SCOY, A. M., B. D., PRESIDENT.

Professor of Greek and Hebrew.

REV. N. DOANE, D. D.,

Professor of Systematic Theology.

REV. H. K. HINES, D. D.

Professor of Historical Theology.

The Theological Department was formally organized October, 1889. It was deemed wise thus to begin in a regular way the work of Theological education in the institution.

During the year, only partial work has been done. It is hoped that the friends of ministerial education will soon give such financial aid as may be necessary.

Expenses.

Students in Theology have special privileges in connection with the College of Liberal Arts. They also have all the advantages of cheap board and room rent which are accorded to other students. No tuition is charged in this Department, but an incidental of \$10 a year, payable half yearly in advance, is required.

The school year begins September 1st, and consists of two terms of twenty weeks each.

Diplomas.

While the student preparing for the ministry is advised to complete a college course before entering the Theological school, yet those who may not have the time and means to take such a course, and yet desire a professional training for their work, will be entered

and yet desire a professional training for their work, will be entered as Theological students, and will be awarded the diploma on the completion of the course. Those who complete both a College and Theological course will receive the degree of Bachelor of Divinity.

Requirements.

Those who wish to enter the Theological Department, if they do not bear diplomas from some institution of learning, must present sufficient evidence that they possess at least a common English education. If they have not obtained a sufficient amount of education to admit them, they can be allowed to enter upon the study of Theology by permit of the Faculty; provided, also, that they enter upon the study of the required work in the Literary Department of the University.

Those who are not licensed to preach or exhort will be expected to bring recommendations from their Quarterly Conferences that they are suitable persons to enter this school for the study of the ministry. A form for this recommendation will be found under "General Statement" of this Catalogue. For the studies to be pursued see "Courses of Study" on another page.

COLLEGE OF LAW.

FACULTY.

THOMAS VAN SCOY, A. M., D. D., PRESIDENT.

JUDGE WM. RAMSEY, DEAN,

Professor of Equity Jurisprudence, the Law of Real Property and Pleadings.

GEO. BINGHAM, LL. B.,

Professor of the Law of Contracts, Torts and Commercial Law.

WM. H. HOLMES, Esq.,

Professor of Criminal Law, Constitutional Admiralty and Maritime Law.

S. T. RICHARDSON, Esq.,

Professor of Common Law and the Law of Evidence.

Course of Instruction.

The course of study in the College of Law occupies two years, the students being divided into two classes, the Junior and Senior.

The daily exercises consist of lectures and recitations from standard text-books, the latter being accompanied by oral explanations.

The student will be frequently referred to the leading cases on the subject under consideration, and required to be prepared for questions upon them at the next exercises; they will also be encouraged to put questions freely to the instructors at all recitations.

Moot courts will be held regularly, at which one of the professors will preside, and the students will act as counsel. The students will be required to draw all the necessary pleadings according to the common law or equity forms, as the case may be, and discuss their sufficiency.

The plan of study comprises various branches of common law, equity jurisprudence, commercial, international, constitutional, criminal and maritime law.

The first year of the course is devoted to the study of general commentaries upon municipal law, the law of contracts, of real estate, and commercial law.

The second year includes equity jurisprudence, the law of torts, criminal law, evidence, pleading and practice.

The principal text-books to be used in the course are Blackstone's Commentaries, Tiedman on Real Property, Kent's Commentaries, Parsons on Contracts, Cooley on Torts, Bispan's Equity, Wharton's Criminal Law, latest edition, Greenleaf on Evidence, Chitty on Pleadings, Vol. 1, Bliss on Code Pleading, and Daniel on Negotiable Instruments.

Other text-books will be used for reference and illustration.

It is believed that a number of students can obtain positions in law offices in Salem and get the use of books free of charge.

Students will find their own books.

State Library.

Students have free access to the State Library, which contains a large collection of law text-books and complete set of the United States Supreme Court Reports, and the reports of nearly all the States and Territories.

The Courts.

The Supreme Court of this State holds most of its sessions in Salem, and sits nearly the whole school year. The Circuit and County Courts have regular sessions in this place. Students can

attend these Courts when cases of importance are being tried, and become familiar with legal business.

Lectures.

Members of the Faculty will, in addition to the ordinary expositions given during recitations, deliver lectures upon important legal topics when deemed advisable, and also eminent members of the bar from different parts of the State will deliver lectures to the students occasionally.

Examinations.

In addition to the examinations which will occur at the beginning and close of the year, the classes will be examined as frequently as the Faculty may deem it advisable.

Students desiring to enter the Junior class will be examined as to their qualifications on the third Tuesday of September, and they must at the same time, unless they are personally known to some member of the Faculty, present certificates showing that they are possessed of good moral character.

Graduation and Degrees.

Students who have pursued the full course of study, and have passed satisfactory examinations and complied with the rules of the College of Law, will be recommended by the Faculty for graduation, and the corporation will confer upon them the degree of Bachelor of Laws.

Admission to the Bar.

The Faculty confidently hope that arrangements will be made by which graduates of this College will be admitted to the bar of all the Courts of this State without examination.

Attendance and Deportment.

It is desirable that all students enter the school at the beginning of the year.

All students will be expected and required to attend all recitations of their respective classes, and to pursue their studies diligently, except when excused from so doing by sickness or other good cause.

Students will be expected and required to conduct themselves with propriety, and to refrain from intemperance, gambling and other misconduct, and to obey all rules and regulations adopted by the Faculty or Trustees.

Classes.

Students will not be admitted to the Junior class unless they possess at least a good common school education, and if they have not received a degree from some college of art, they must satisfy the Faculty that they possess such education. A knowledge of Latin is desired, but not required.

The students who pursue their studies at this school for one year, and pass a satisfactory examination in all the studies of the Junior year, will be admitted to the Senior class.

Students who have pursued the study of law a year in some other college of law, or have studied law under a competent instructor for at least one year and pass a satisfactory examination by the Faculty of this College in the branches taught in the Junior year or their equivalents, may be admitted to the Senior class.

Scholastic Year.

The school year begins on the third Wednesday in September of each year, and ends on the third Wednesday in May, and this year constitutes one term. Students will not be admitted for a shorter period than one year.

Expenses.

The charges for tuition will be \$50 per annum for the first year, one-half of which must be paid or secured at the beginning of the year. A fee of \$5.00 will be charged at graduation to those receiving diplomas.

Board and lodging can be obtained at reasonable rates.

WOMAN'S COLLEGE

Faculty of Oversight.

THOS. VAN SCOY, President.

MISS MATTIE L. HANSEE, A. M., Dean.

MRS. G. W. GRAY.

MRS. AMELIA MILLER, B. S.

I. This department of the University provides instruction :

1. In Music—(see Conservatory of Music.)

2. In Art—(see Art Department.)

II. It provides homes for all lady students from a distance whether taking lessons in Music or art, or reciting in any other department of the University.

It affords a place of residence, under careful supervision, and amid refined and orderly surroundings.

Board in Woman's College Hall, with everything furnished except towels, napkins and bed clothing, \$3.50 per week. A well-furnished room is supplied. But the occupants are expected to have a room-mate. Day board, and board for those who supply their own furniture, is put at \$3 per week.

Many parents object to sending their daughters from home to a school where, from the want of a College home, under proper over-

sight, they are compelled to board in families, that, as a rule, acknowledge no responsibility to parents or to the University.

It offers to all the students of the Woman's College—those resident in the building and those living in the city—a center or place of gathering for lectures and for such social events as may pertain to the home life of the department.

The Dean and other teachers reside in the Hall, and thus it becomes a religious home, and at the same time is surrounded by all the good influence of College life.

Care is taken in the furnishing of the building, in the regulations pertaining to the household, and in the internal life of resident students and officers, to maintain the atmosphere and surroundings of a refined, a gentle home, so as to make residence in the College Hall a means of education.

It is not designed to make the Hall a means of income to the University; it is not a financial venture, and has nothing in common with the aim of a boarding house. On the contrary, the cost of residence is placed so low as to bring the advantage of the Hall within the reach of all earnest young women desirous of an education.

CONSERVATORY OF MUSIC

FACULTY

THOMAS VAN SCOY, A. M., D. D., PRESIDENT.

Z. M. PARVIN, DIRECTOR.

Vocal Culture, Piano, Organ, Violin, Harmony and Class Teaching.

EVA COX,

Piano, Organ and Harmony.

LULU SMITH, ASSISTANT TEACHER,

Piano and Organ.

LEONA WILLIS, ASSISTANT TEACHER,

Piano, Organ and Voice.

EDITH HARRIS, ASSISTANT TEACHER,

Piano, Voice and Organ.

MARY STEINER, ASSISTANT TEACHER,

Piano and Organ.

Information.

The Conservatory of Music affords facilities for a thorough and systematical education in the theory and practice of music. The value of music as an element of culture depends very largely upon the other elements of culture, literary and scientific, acquired with it. It is, therefore, advised that the pupils in music pursue at the same time some other study, or studies, in one of the departments of the University. An exclusive musical education will, however, be given to those who desire it, and instruction may be taken for any longer or shorter time. Special opportunities will be afforded

to those who desire to fit themselves for the profession, either as artists or teachers.

Pupils have the choice of three courses: the Virtuoso, Teacher, and the Post-Graduate. The Virtuoso course requires the pupil to have a thorough knowledge of the Theory of Music, Harmony, Single Counterpoint, History of Music, including a familiarity with the lives and works of the Great Masters; to become an artist upon some instrument or as a singer.

The Teachers' Course will include the Virtuoso, with the addition of the Methods of Teaching, and more of Practical Musical Composition.

The Post-Graduate course adds to the Virtuoso and Teachers' course the study of Double Counterpoint and Fugue, Orchestration, and continued studies in advanced piano-forte playing and voice training, preparing the student for the degree of Bachelor of Music in course.

By attending the Conservatory, pupils are brought under the influence of systematic teaching, and in the associating with other pupils are stimulated to more earnest effort. The instruction given is according to the methods now in use in the best Eastern Conservatories. Persons on this coast who desire a complete and satisfactory course in music need not be at the expense of going East. Those who have taken the course are surprised at its completeness. The difficult work in passing all the grades to graduation, eminently preparing for a teacher or artist. Salem is well adapted as a city for a school of music. The society in Salem is of the very best, and all influences are of an elevating character.

The Conservatory has ample facilities for all who wish the best instruction, having at present six teachers, six pianos, three organs, one being a fine pedal instrument. All pupils are advised and encouraged to take a regular course and graduate.

The free advantages deserve special mention. They are equivalent to fifty free lessons each year, if pupils take advantage of them. 1st. Public rehearsals are held twice each term, at which pupils of

the proper advancement appear in songs and instrumental solos, four and eight-hand pieces. 2d. Lectures upon Musical History, etc., are given occasionally. 3d. Pupils of the fourth and fifth grades will receive two terms, one lesson in each week, in methods of teaching. 4th. Chorus rehearsals are held once a week. 5th. Pupils have access to the Conservatory Library. 6th. Orchestral rehearsal each week.

Visitors are always welcome, and are invited to come and see the regular work of the pupils.

Branches Taught.

Instruction is given on the Piano, Organ, Violoncello, Violin.

In Notation and Rudiments of Music, solo singing in Italian, German and English.

Harmony, including Counterpoint and Fugue, Orchestration.

Art of Teaching Vocal Music in the Public Schools.

Theory.

Tonic Sol-Fa Method.

Church Music.

German and French languages, if desired.

Oratorio and Chorus Practice.

Class Teaching.

The class system of teaching music is very popular wherever it has been thoroughly tested. When not more than two or three pupils of equal grade receive lessons in a class, the improvement is generally equal to private instruction.

Reading Classes.

Pupils have the advantage of reading classes once or twice each week. This will enable them to become better readers and strict timeists.

COURSES OF STUDY.

Piano and Voice Culture in five grades. Organ and Violin in four.

Piano.**GRADES ONE AND TWO,**

Shall complete some approved instruction book, and Loschhorn's Opus, 66, Book I. Also Piano pieces of like grade.

THIRD GRADE.

Czerney's Opus, 299, three books, or Beren's Velocity Studies, books I and II, or equivalent, selections from Haydn's, Clementi's and Mozart's Sonatas. Also Modern Piano Pieces.

FOURTH GRADE.

Cramer's Fifty Studies, two or three books, and Kohlers' Opus, 128. Also Octave Studies. Sonatas of Mozart and Beethoven, also piano selections from other classic and modern composers.

FIFTH GRADE.

Clementi's Gradus ad Parnassum, Moscheles' Opus, 70, book I, and half of Bach's Preludes and Fugues. Beethoven's Sonatas and selections from Mendelssohn, Weber, Chopin, Liszt and others.

Teachers' course will include all the above except Bach's Fugues.

Post Graduate.

Finishing Bach's Preludes and Fugues, Mendelssohn Opus, 35. Selections from New Gradus ad Parnassum, Concertos, Liszt's Rhapsodies, Chopin's Fantasias, etc.

NOTE:—As a basis for technical studies, Mason's and Faelton's Piano-forte Technics are recommended for each pupil.

Vocal Culture.**FIRST GRADE.**

Rudiments of Vocal Music, Formation of Tone, Focus of Vibration and Respiration.

SECOND GRADE.

Studies of the registers of the voice.

Concone Fifty lessons, Marchesi's Opus, I, or Webb's Voice Culture to page 160.

THIRD GRADE.

Completion of Webb's Voice Culture, or Marchesi's Opus, II, and Vaccai's Italian Singing with suitable songs for practice. (For Baritone or Bass. The equivalent of other studies will be selected in all the grades.)

FOURTH GRADE.

Signor Marchesi's Twenty Vocalises, Damoreau's Studies, part two, Arias from the Operas and Oratorios, and songs from the best authors.

FIFTH GRADE.

Vocal Embellishments, Bordogni's Vocal Studies, study of Arias from Standard Oratorios and Operas.

Post-Graduate.

Madam Marchesi's Vocalises, Opus, 6 and 7, and six studies by Lamperti. Study of Trills, Cadenzas, and all other embellishments used in singing. Vocal solos of difficult styles and characters in some of the Operas complete.

Violin.

Four Grades—David's or Lewis Schubert's School, with other suitable studies and pieces.

Organ.

FOUR GRADES.

First and Second Grades.—Whitney's or Emerson's Methods.

Third Grade—Thorough Bass, Organ Voluntaries and Church Music from four staves.

Fourth Grade—Preludes and Fugues and Organ pieces from Bach and others.

Pipe Organ.

Rink's School and Buck's Pedal Exercise, in four grades, including registration, also suitable pieces for the Pipe Organ.

Harmony.

Thorough Bass and Musical Composition to the use of the collateral and diminished sevenths, and sharp sixths, four terms. Suspensions, Modulations, Single Counterpoint, Elements of Orchestration and higher Musical Composition, in five to eight parts, four terms.

Post-Graduate.*

Study of Double Counterpoint, Fugue and Orchestration, Text-books on Counterpoint Fugue, Higg's and Bridge, or Richter.

*A student completing the Post-Graduate course will write an approved musical composition, either vocal or instrumental, to be performed during the next Commencement, a manuscript copy of which shall be filed in the Conservatory Library.

Diplomas.

Any pupil completing the course in Piano, Organ or Violin, will, in addition, have completed the course in Harmony, Counterpoint, Theory, History, and two grades in Vocal Music, or equivalent.

Vocal students completing the same and two grades of Piano or equivalent, and shall have a common English education, will be granted a Diploma.

Rates of Tuition.

(Invariably in Advance.)

| | |
|---|---------|
| Piano or Organ, class of two, twenty lessons (one term) | \$10 00 |
| Vocal Culture, class of four, twenty lessons (one term) | 6 00 |
| Vocal Culture, class of two, twenty lessons (one term) | 12 00 |
| Harmony, three or more, twenty lessons, (one term) | 6 00 |
| Counterpoint, Fugue and Orchestration, two or more (one term) | 10 00 |
| Piano reading classes, four in class, twenty lessons (one term) | 5 50 |
| Piano reading classes, two in class, twenty lessons (one term) | 11 00 |
| Piano reading classes, four in class, ten lessons [one term] | 3 00 |

| | |
|---|------------------------|
| Piano, Organ, or Violin, private, twenty lessons [one term] | 12 50, 15 00 or 20 00 |
| Pipe Organ, twenty lessons [one term] | 20 00 |
| Vocal Culture, twenty lessons [one term] | 20 00 |
| Vocal Culture, one lesson per week | 12 00 |
| Piano, Organ, Violin and Vocal Culture, half-hour lessons, private, two each week, one term | 8 00, 10 00, and 12 00 |

†The reason that different prices for private lessons are made is on account of the different teachers.

Rent of Pianos for Practice.—A charge of \$2 00 for one hour a day, per term, and for each additional hour, \$1 50.

Organ—\$1 50 for one hour a day, and for each additional hour, per term, \$1 00.

Pupils taking private lessons in more than one branch, will be given reductions from the above rates. No reductions from the class rates.

Clergymen who are dependent upon their salaries, and who send their children to the Conservatory, will receive a reduction from the above rates of ten per cent.

Pupils taking Class, Organ or Piano lessons must arrange for two lessons per week.

It is important that pupils shall begin with the school term.

It is urged that pupils take the regular course of study, with the object of graduating from the Conservatory.

General Information.

TIME OF COURSE.—No definite time can be fixed. Some pupils will make double the advancement of others.

CHILDREN.—Special arrangements will be made for children to study music.

ORGAN PRACTICE.—A pedal organ is furnished for practice in the Conservatory. For more advanced pupils a pipe organ is used, located in the M. E. Church, Salem.

LENGTH OF TERM.—The usual length of each term is ten weeks

Special arrangements are made in special cases.

The Musical History and Harmony class is organized into a Musical and Literary Society for the purpose of studying the lives and works of the Great Masters, also Musical History.

Regulations.

1. The examination and classification of pupils, and the payment of tuition and practice bills, must be attended to before the lessons begin.

2. Pupils will not be allowed to discontinue any study during the term without permission from the Director.

3. No deductions will be made for lessons lost by the pupil, except in cases of severe illness. Pupils must notify the teacher when they are unavoidably absent, before the time of the lesson.

4. Pupils in the 1st, 2nd, and 3d Piano or Organ grades, taking two lessons each week, are required to practice two hours or more each day. In the 4th and 5th grades, from three to five hours each day.

Boarding.

Board at reasonable prices may be had in the Woman's College, and in private families.

For further information, call upon or address

Z. M. PARVIN,
Director of Conservatory of Music.

ART DEPARTMENT.

T. VAN SCOY, D. D., PRESIDENT.

Miss Marie Craig, Instructor.

Information.

This work is in charge of accomplished instructors. Drawing and design are taught, as also painting in all its branches.

It is hoped that the friends of art culture will aid in the equipment of a studio with gifts of casts, specimens of pottery, art works and charts.

Decorative art is made a specialty. When the weather is suitable, the pupils of the department are taken by their teachers to sketch from nature. Many of them make very rapid progress. Pupils are first taught pattern drawing, then put at the more difficult work of drawing from objects. Afterward they are allowed to advance to paintings in India Ink, and Sepia and Oil Paintings.

The Art Department and Conservatory of Music comprise the work designed to be done under the auspices of the Woman's College.

Advantages are offered in this department for completing a graded course of study and enabling students to make rapid progress.

This course consists in work from the round [objects, casts, etc.] and will cover a period of two years. A course of amateurs desiring an accomplishment will also be provided, consisting in work from the flat [patters, plates, etc.] Those completing the course will be awarded diplomas.

Courses of Study, First Year.**CAST DRAWING.**

First and Second Terms.—Fruits and ornaments.

Third and Fourth Terms.—Masks and figures.

SECOND YEAR, DRAWING AND PAINTING FROM LIFE.

First and Second Terms.—Painting, still life; drawing, life.

Third and Fourth Terms.—Drawing; painting, life.



UNIVERSITY ACADEMY.

Information.

The University Academy provides instruction in five different courses:

1st. The Preparatory Classical, embracing three years' study, prepares the student for the Freshman class of the same course in the College of Liberal Arts.

2nd. The Preparatory, Latin and Scientific, embracing three years of study, prepares the student for the Freshman class of the same course in the College of Liberal Arts.

3rd. The Preparatory, Literature and Art course, which is the same as the Latin and Scientific, prepares the student for the Freshman class in the same course in the College of Liberal Arts.

4th. The Teacher's course is prepared for those who do not wish to take a College course, but who desire to fit themselves thoroughly to teach in public schools of common and high grade, and be able to pass examination for Life Diploma and State Certificate.

5th. The Business course aims to give the student the most thorough and practical education that can be obtained in the time allotted. A thorough knowledge of all kinds of business papers, such as promissory notes, drafts, checks, deeds, mortgages, etc., together with the laws relating to them, and the more important principles of political economy will be required, and great care will be taken to give the student the latest and best information in all the studies of the course, which is described in another place.

ELOCUTION,

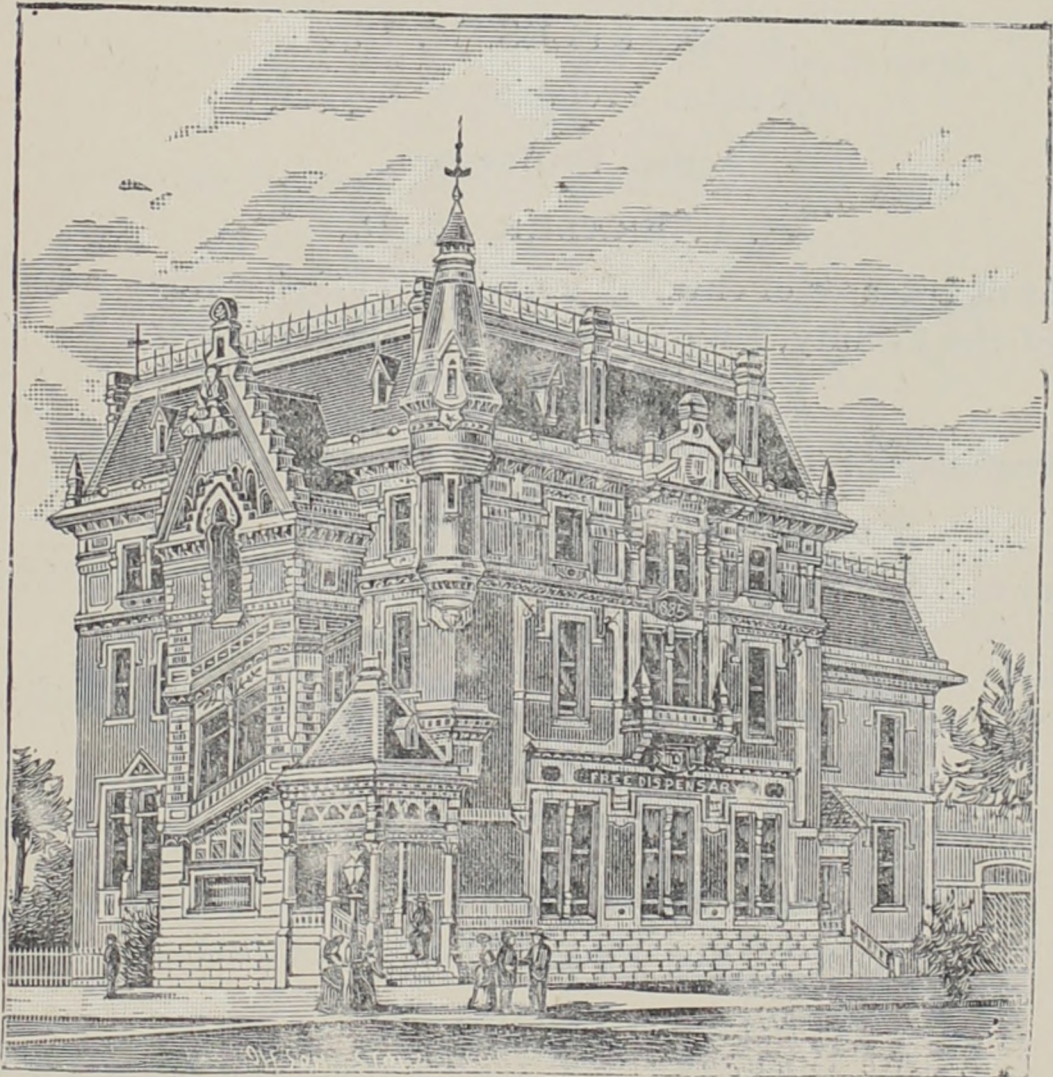
Miss Stella Ames, B. S., Professor.

This line of study is in the charge of a teacher who has made this important branch a special work. The students are arranged in classes, and special drill is given to each one to develop the vocal organs, by which a great ease and variety of utterance is attainable. Much care is taken also to acquire a proper emphasis and expression to voice, feature and gesture, in order to bring out and impress the full meaning of the author. Public exercises are appointed frequently during the year, in which the students render such pieces as will make a first-class entertainment, and at the same time give confidence and readiness in delivery. By this method the poorest readers have, in a short time, not only become good readers, but have been able to render before an audience, in an excellent manner, very difficult pieces.

About one hundred of the students have received special elocutionary instruction during the present year. These students are excused from the regular duty of declaiming in the various sections appointed for this work under the other teachers.

MEDICAL DEPARTMENT.

LOCATED AT PORTLAND.



FACULTY.

THOMAS VAN SCOY, A. M., D. D.,
President of Willamette University.

Emeritus Professors.

D. PAYTON, M. D.,

Emeritus Professor of Diseases of Women and Children.

L. L. ROWLAND, M. D., F. R. S.,

Emeritus Professor of Physiology and Microscopy.

R. GLISAN, M. D.,

Emeritus Professor of Obstetrics, and Occasional Lecturer on Obstetrics.

A. SHARPLES, M. D.,

Emeritus Professor of Surgery.

Active Professors.

E. P. FRASER, M. D.,

Professor of Diseases of children and Clinical Gynecology, and Dean of the Faculty, Union Block, First and Stark Streets.

C. H. HALL, M. D.,

Professor of Theory and Practice of Medicine, Salem.

RICHMOND KELLY, A. M., M. D.,

Professor of Obstetrics and Microscopy, First and Jefferson Streets.

F. CAUTHORN, A. M., M. D.,

Professor of Anatomy and Clinical Surgery, Union Block.

J. W. FRAZEY, M. D.,

Professor of Materia Medica and Therapeutics, Third and B Streets.

P. R. YOUNG, M. D.,

Professor of Physiology, Third and B Streets.

W. B. WATKINS, M. D.,

Professor of Diseases of the Eye, Ear, Throat and Nose, First and Alder Streets.

G. O. JEFFERSON, M. D.,

Professor of Chemistry and Toxicology, Fourth and D Sts., McMillan's Addition, East Portland.

H. REESE HOLMES, M. D.,

Professor of Surgery and Assistant Professor Clinical Gynecology,
Fourth and Washington Streets.

WILLIAM BOYS, M. D.,

Professor of Diseases of Women and Clinical Medicine, Second and
Morrison Streets.

Lectures on Special Subjects, Etc.

HON. M. C. GEORGE, LL. D.,

Medical Jurisprudence, First and Alder Streets.

D. H. RAND, M. D.,

Genito-Urinary Organs, First and Ash Streets.

LEWIS F. ROSS, B. A., M. D.

Physical Diagnosis and Hygiene, 195 First Street.

GEORGE H. CHANCE, D. D. S.,

Dental Pathology, First and Alder Streets.

A. W. MOORE, M. D.,

Demonstrator of Anatomy, East Portland.

E. P. FRASER, M. D.,

RICHMOND KELLY, A. M., M. D.,

Dean.

Secretary.

ANNOUNCEMENT---SESSION OF 1890-91.

Collegiate Year.

The collegiate year extends from September 15, 1891, to April 4, 1892.

The Twenty-fifth Regular Annual Session will commence on Tuesday, October 6, 1890, and continue until April 4th, 1891. A preliminary session free to all medical students, will commence on Tuesday, September 15th, and continue until the opening of the regular session. The matriculation book is open the entire year, and students so desiring may register early and secure choice of seats on application by enclosing the matriculation fee of five dollars to the Dean.

The Regular Session.

The plan of instruction during the regular session includes didactic lectures and operations, quizzes and practical demonstrations.

Six didactic lectures are delivered each day, four days each week. Wednesday and Saturday of each week three didactic and three clinical lectures will be delivered.

No lectures are given on legal holidays or during the holiday vacation from December 24th to January 4th.

Clinical Instruction.

Portland now contains 80,000 inhabitants, and is rapidly increasing in size. It is, moreover, not only a large and metropolitan business center, but is the terminus of numerous railways, and contains large manufacturing enterprises, which furnish a large and varied number of cases for study. The facilities for clinical study

here afforded are unsurpassed, except by the great medical centers of the country.

Desiring to give the student information that will be the most useful in active professional life, the Faculty endeavors to make the Medical Department of the Willamette University pre-eminently a practical and demonstrative school. No verbal description of the signs and symptoms of a disease, or of the details of an operation, can ever be so clear and impressive as an actual demonstration on a living subject. For this reason, clinical teaching must always supplement the didactic. Therefore, clinics are made a special and attractive feature of this school. At the regular College clinics, where patients who present themselves at the College dispensary for advice and treatment are examined, the peculiarities of each case are explained, the appropriate treatment is prescribed, and the requisite surgical operations are performed before the class. A receiving or emergency department of the Portland Hospital will be centrally located, which will be well equipped for ambulance work throughout the city, and will contain many emergency cases, and being near the college building, students can attend operations that cannot wait for regular clinics. This department will also maintain a free dispensary, where the poor of the city will be treated, and a clinic will be given once or twice each week. In addition, the whole of the afternoon on Wednesday and Saturday, of each week, will be spent in clinical instruction at the Portland Hospital, where clinics will be held at the bedside and in the amphitheatre, in the following branches:

Medicine, Surgery, Eye and Ear, Diseases of Women and Genito-Urinary Diseases. The Medical wards always contain many cases of acute diseases, and changes are taking place constantly. The opportunities for seeing fractures, injuries and traumatic cases of all kinds are excellent, and surgical operations are performed twice a week in the presence of the class.

The Portland Hospital.

The main part of the Portland Hospital is now completed. It is a large and elegant structure, built of brick, and contains a commodious amphitheatre, furnished with the necessary appliances for all

manner of clinical demonstrations and surgical operations. The size of this structure will be 200x170 feet, three stories high, heated by steam, lighted by electricity; it will have an Otis elevator and all the latest modern improvements.

This institution is under the exclusive control of the Faculty, and each student will have access to its wards two days in the week to examine patients, hear clinical lectures, and see all operations performed.

The staff of the Portland Hospital is entirely drawn from the Faculty of the University, giving them unusual advantages for developing clinical material.

It will thus be seen that the Medical Department of the Willamette University can furnish as much clinical material as its students can find time to use to advantage, and is thus prepared to compete with similar schools in the larger cities, while it can lose nothing by comparison with them in this or other respects.

Hospital Appointments.

The position of House Physician is open each April to one or more members of the graduating class, by competitive examination, by the staff of the Portland Hospital. House physicians receive their board and lodging and one hundred dollars per year.

Terms of Admission.

The requirements for admission are:

1. Credible certificate of good moral character. 2. Diploma of graduation from a good literary and scientific college or high school, or a first-grade teachers' certificate. Or, lacking this, a thorough examination in the branches of a good English education, including mathematics, English composition, and elementary physics or natural philosophy.

The diploma or certificate must be presented to the Dean of the Faculty, who may (if any doubt exists in regard to qualifications of applicant) subject him to an examination.

Admission of Women.

Women will be admitted on the same terms and have the same advantages as men.

Three Years' Curriculum.

It will be seen that the changes introduced into the Curriculum of this school in 1887 are now in force. Three regular courses of lectures of six months each, attended through three several years, are required before the student can present himself for graduation.

No increase of expense to the student will result, nor will the plan necessarily extend the period of study, but rather provide for a more systematic and profitable use of time, and better fit the student for the arduous and responsible duties of his profession.

Four Years' Course.

While a three-years' course fulfils the absolute requirements of the College, the Faculty earnestly recommend a four years' course of study, with a still further division of the final examinations. In this case, the labors of the third year may be lightened by the omission of lectures on those branches in which final examinations are to be passed at the end of the fourth year.

Text-Books and Instruments.

The work first named on each subject is preferred.

Medical books can be obtained of J. K. Gill & Co., in this city, at catalogue prices; and it is recommended that students supply themselves with at least one text-book upon each chair. The following works are especially recommended:

ANATOMY.—Gray, Wilson, Quain, and Heath's Dissector.

PHYSIOLOGY.—Dalton, Yeo, and Marshall.

MATERIA MEDICA.—Bartholow, Farquharson's Therapeutics and Materia Medica. Wood, U. S. Dispensatory.

MEDICAL JURISPRUDENCE.—Wharton and Stille.

CHEMISTRY.—Wooddy, Youman's, Fown's, etc.

OBSTETRICS.—Lusk, Glisan's Modern Midwifery, and Leishman.

WOMEN.—Skene, Thomas, Byford.

CHILDREN.—J. Lewis Smith.

PRACTICE OF MEDICINE.—Bartholow, Bristowe, Flint, Pepper, and Roberts.

SURGERY.—Wyeth, Ashhurst, Bryant, Hamilton's Dislocations and Fractures, and Gross.

OPHTHALMOLOGY AND AURAL DISEASES.—S. Wells, Landolt, Examination of Eye. Throat and Nose, Mackenize and Bosworth. Roosa on Ear.

DENTAL PATHOLOGY.—Garretson.

GENERAL PATHOLOGY.—Zeigler, Gilliam and Woodhead.

FOR REFERENCE.—Gould's Medical Dictionary.

The latest editions only for text-books should be purchased by students.

A "Dissecting Case," containing all the necessary instruments, can be bought for \$4.00.

Terms.

The fee for a full Course of Lectures is \$120; Martication ticket (paid but once), \$5; Demonstrator's ticket for each course, \$10; Graduation fee, \$30. Tickets for one or any of the Departments may be had separately at \$20 each, with Martication fee paid but once.

Students who have paid for two full courses in this school, are entitled to attend free of charge thereafter.

Medical Students will be allowed to attend the lectures on Botany and Pharmacy in the College of Pharmacy free of charge.

No variation is made under any circumstances from the established fees of the college.

All further information that may be desired can be obtained by applying in person, or by letter to

E. P. FRASER, M. D.,

Dean of the Faculty,

Portland, Oregon.

DEPARTMENT OF PHARMACY.

LOCATED AT PORTLAND.

FACULTY.

G. O. JEFFERSON, M. D.,
Professor of Chemistry.

W. G. COLE, PH. G.,
Professor of Materia Medica.

H. D. DIETRICH, PH. G.,
Professor of Theory and Practice of Pharmacy and Dean of Faculty.

P. R. YOUNG, M. D.,
Professor of Botany.

RICHMOND KELLY, A. M., M. D.,
Professor of Microscopy.

H. D. DIETRICH, Dean.

ANNOUNCEMENT.

The fourth annual course of Pharmaceutical instruction will commence on Tuesday, October 6, 1891, and will continue during the six months following.

The instruction will embrace lectures upon Organic and Inorganic Chemistry, Theoretical and Practical Pharmacy, Materia Medica, Botany and Microscopy.

The faculty of the Pharmaceutical Department of Willamette Uni-

versity has been reorganized and proper exertion has been made to place the institution in such a condition that it will afford the means of a thorough and practical Pharmaceutical education. The new college building is a matter of pride and satisfaction to all who are interested in such an institution. It has been constructed and arranged solely to afford the best facilities for teaching and learning. It is three stories high above the basement and contains ample lecture halls, spacious laboratories for chemical and pharmacal work, museum, library, etc.

Requirements for Admission.

Every applicant for admission to the regular course of graduation at this College must have attained the age of sixteen years, and be required to pass a preliminary examination or to present a diploma or other satisfactory written evidence that he has passed the first Grammar Grade and is entitled to enter the High School of this city, or has attended some academy of a grade equal to that of our High Schools. Those who do not present such certificates will be examined in English Reading and Composition, Penmanship, Orthography and Arithmetic.

In order that the students may derive the fullest benefit from the course, they should be present at the opening of the session and every lecture thereafter.

Text Books.

U. S. Pharmacopœia.

Organic Materia Medica, by J. M. Maisch.

U. S. Dispensatory, by Wood & Bache.

Remington's Practical Pharmacy.

Thome's Botany.

Behr's Flora.

Attfield's Pharmaceutical and Analytical Chemistry.

Reference Books.

National Dispensatory, by Stille and Maisch.

Pereira's Materia Medica.
Attfield's Pharmaceutical Chemistry.
Fownes' Chemistry.
Roscoe's Elementary Chemistry.
Proctor's Lectures on Practical Pharmacy.
Gray's Lessons in Botany.
Gray's How Plants Grow.
Pharmacographia, Fluckiger & Hanbury.

Fees.

| | |
|------------------------------------|---------|
| Matriculation (paid but once)..... | \$ 2 50 |
| Lecture fees for full course..... | 50 00 |
| Diploma fee..... | 10 00 |
| Certificate of proficiency..... | 3 00 |

GRADUATES.

1889.

| NAME. | RESIDENCE. |
|-------------------------|------------|
| Breck, Jr., George..... | Portland |

1890.

| | |
|------------------|----------|
| Cole, W. G..... | Portland |
| Ross, Edwin..... | Portland |

1891.

R. S. COLLIS,
MISS LENA KNICKERBOCKER,
E. C. ROBBINS.

For further information address,
PROF. H. D. DIETRICH, DEAN,
Portland, Oregon.

COURSES OF STUDY,

THEOLOGICAL DEPARTMENT.

JUNIOR YEAR.

| DEGREE COURSE. | DIPLOMA COURSE. | ECLECTIC ENGLISH COURSE. |
|---|--|--|
| FIRST TERM. | FIRST YEAR. | |
| Practical Theology. Biblical Instruction. Elementary Hebrew. New Testament—Gospels. Systematic Theology. Biblical Archæology. | Practical Theology. Biblical Introduction. Elementary Greek. Systematic Theology. Biblical Archæology. | Theological Encyclopedia. Biblical Introduction. Systematic Theology. Biblical Archæology. |
| SECOND TERM. | SECOND TERM. | |
| Biblical Hermeneutics. Elementary Hebrew—Prose Reading. New Testament—Gospels. Systematic Theology. Historical Theology. Practical Theology. | Familiar Talks on Preaching. Biblical Hermeneutics. Elementary Greek. Systematic Theology. Pre-Christian History. Practical Theology. | Familiar Talks on Preaching. Biblical Hermeneutics. Systematic Theology. Pre-Christian History. |

MIDDLE YEAR.

| DEGREE COURSE. | DIPLOMA COURSE. | ECLECTIC ENGLISH COURSE. |
|---|--|--|
| FIRST TERM. | FIRST TERM. | |
| Old Testament—Psalms. New Testament—Epistles. Systematic Theology. Apostolic Church History. Pastoral Theology. | Elementary Hebrew. New Testament—Gospels. Systematic Theology. Apostolic Church History. Pastoral Theology. | Systematic Theology. Church History. Pastoral Theology. |
| SECOND TERM. | SECOND TERM. | |
| Old Testament—Job. New Testament—Epistles. Systematic Theology. Ancient and Medieval Church History. Pastoral Theology. Church Government—Discipline M. E. Church. | Elementary Hebrew. New Testament—Gospels. Systematic Theology. Ancient and Medieval Church History. Pastoral Theology. Church Government—Discipline M. E. Church. | Systematic Theology. Ancient Medieval Church History. Pastoral Theology. Church Government—Discipline M. E. Church. |

SENIOR YEAR.

| DEGREE COURSE. | DIPLOMA COURSE. | ECLECTIC ENGLISH COURSE. |
|---|--|--|
| FIRST TERM. | FIRST TERM. | |
| Old Testament—Prophets. New Testament—Selected Epistles, Introduction to Biblical Theology of New Testaments, and written expositions by the class. Homiletics, with private & public exercises. Post-Reformation History. Comparative Theology. | Old Testament—Psalms. New Testament—Epistles. Homiletics, with private and public exercises. Post-Reformation History. Comparative Theology. | Homiletics, etc. Church History. Comparative Theology. |
| SECOND TERM. | SECOND TERM. | |
| Biblical Aramaic and Exposition of Daniel. New Testament—Selected Epistles, Introduction to Biblical Theology of New Testament, and written exposition by the class. Homiletics, with private and public exercises. History of Doctrines. Comparative Religion. | Old Testament—Job. New Testament—Epistles. Homiletics, with private and public exercises. History of Doctrines. Comparative Religion. | Homiletics, etc. History of Doctrines. Comparative Religion. |

GRAMMAR SCHOOL.

Reading, Writing, Spelling, Arithmetic, Physical and Political Geography, History of United States, Grammar, Composition, Normal Mental Arithmetic.

Students are made thorough in all these branches before entering upon the more advanced branches, in the following courses: Spelling and Writing are continued, as well as English Grammar, in the more advanced work, until the students are very competent in these subjects.

I. Preparatory Classical.

FIRST YEAR.

First Term—Latin, Arithmetic, Physiology, Grammar, History of United States, Normal Mental, Writing and Spelling.

Second Term—Latin, Arithmetic, Physiology, Grammar, History of United States, Normal Mental, Writing and Spelling.

Third Term—Latin, Cæsar, Arithmetic, Physical Geography, Normal Mental, Grammar and Composition.

Fourth Term—Latin, Cæsar, Arithmetic, Physical Geography, Normal Mental, Grammar and Composition.

SECOND YEAR.

First Term—Latin, Cicero, Greek, Elementary Algebra and Ancient History.

Second Term—Latin, Cicero, Greek, Elementary Algebra and Ancient History.

Third Term—Latin Composition, Cicero, Greek, Anabasis, Elementary Algebra, and Natural Philosophy.

Fourth Term—Latin Composition, Cicero, Greek, Anabasis, Elementary Algebra and Natural Philosophy.

THIRD YEAR.

First Term—Virgil, Greek Composition, Homer, Algebra, English Synonyms.

Second Term—Virgil, Greek Composition, Homer, Algebra, English Synonyms.

Third Term—Virgil, Greek Composition, Memorabilia, Algebra, Descriptive Astronomy.

Fourth Term—Virgil, Greek Composition, Memorabilia, Algebra, Descriptive Astronomy.

II. Preparatory Latin and Scientific.

FIRST YEAR.

Same as Classical.

SECOND YEAR.

Same as Classical, except that French is substituted for Greek.

THIRD YEAR.

Same as Classical, except that German is substituted for Greek.

III. Preparatory Literature and Art.

Same as Latin and Scientific.

IV. Teachers' Course.

FIRST YEAR.

First Term—Arithmetic, Grammar, History of United States, Normal Mental, Physiology, Writing and Spelling.

Second Term—Arithmetic, Grammar, History of United States, Normal Mental, Physiology, Writing and Spelling.

Third Term—Arithmetic, Normal Mental, English Analysis, Physical Geography, Composition.

Fourth Term—Arithmetic, Normal Mental, English Analysis, Physical Geography, Composition.

SECOND YEAR.

First Term—Elementary Algebra, Rhetoric, Ancient History, Descriptive Geography, and Map Drawing.

Second Term—Elementary Algebra, Rhetoric, Ancient History, Descriptive Geography, and Map Drawing.

Third Term—Elementary Algebra, Government Class Book, Ancient History, Natural Philosophy.

Fourth Term—Elementary Algebra, Government Class Book, Ancient History, Natural Philosophy.

THIRD YEAR.

First Term—Geometry, Algebra, Oregon School Law, and English Synonyms.

Second Term—Geometry, Algebra, Oregon School Law, Constitution of the United States, and English Synonyms.

Third Term—Geometry, Algebra, Bookkeeping, English Literature, and Theory and Practice of Teaching.

Fourth Term—Geometry, Algebra, Bookkeeping, English Literature and Theory and Practice of Teaching.

V. Business Course.**FIRST YEAR.**

First Term—Bookkeeping, Practical Arithmetic, Grammar, History of the United States, Normal Mental, Writing and Spelling.

Second Term—Bookkeeping, Practical Arithmetic, Grammar, History of the United States, Normal Mental, Writing and Spelling.

Third Term—Bookkeeping, Practical Arithmetic, Grammar, Government Class Book, Normal Mental, Writing and Spelling.

Fourth Term—Bookkeeping, Practical Arithmetic, Grammar, Government Class Book, Normal Mental, Writing and Spelling.

SECOND YEAR.

First Term—Bookkeeping, Elementary Algebra, Political Economy and Physiology.

Second Term—Bookkeeping, Elementary Algebra, Political Economy and Physiology.

Third Term—Elementary Algebra, Commercial Law, Lectures on Business Topics and Letter Writing.

Fourth Term—Elementary Algebra, Commercial Law, Lectures on Business Topics, Letter Writing.

German, Shorthand, and Typewriting are taught in the Business Course, if desired.

COLLEGE.

I. Classical.**FRESHMAN.**

First Term—Cicero de Scenectute, Herodotus, Geometry and Rhetoric, Bookkeeping.

Second Term—Cicero de Amicitia, Herodotus, Geometry and

Rhetoric, Bookkeeping.

Third Term—Livy, Plato's Apology, Geometry and Botany, Commercial Law.

Fourth Term—Livy, Plato's Crito, Geometry and Botany, Commercial Law.

SOPHOMORE.

First Term—Horace, Demosthenes de Corona, Trigometry, Zoology and German.

Second Term—Horace, Demosthenes de Corona, Surveying, Zoology and German.

Third Term—Tacitus, Logic, Analytical Geometry, English Literature and German.

Fourth Term—Tacitus, Logic, Analytical Geometry, English Literature and German.

JUNIOR.

First Term—Chemistry, French or Hebrew, Physics, New Testament, Greek, Political Economy.

Second Term—Chemistry, French or Hebrew, Physics, New Testament, Greek, Political Economy.

Third Term—Mineralogy, French or Hebrew, Physics, History, New Testament, Greek.

Fourth Term—Mineralogy, French or Hebrew, Physics, History, New Testament, Greek.

SENIOR.

First Term—Intellectual Philosophy, Moral Philosophy and Anology of Revealed Religion, International Law.

Second Term—Intellectual Philosophy, History of Civilization, Moral Philosophy, International Law.

Third Term—Evidence of Christianity, Astronomy, Geology, History of Philosophy, Constitution of the United States.

Fourth Term—Natural Theology, Astronomy, Geology, and History of Philosophy, Constitution of the United States.

Literature and Art.

FRESHMAN.

Same as Latin and Scientific, except the substitution of Music or Art for German and French.

SOPHOMORE.

Same as Latin and Scientific, except the substitution of Music or Art for Latin.

JUNIOR.

Same as Latin and Scientific, except the substitution of Music or Art for Calculus.

SENIOR.

Same as Latin and Scientific, except the substitution of Music or Art for International Law and Political Economy.

II. Latin and Scientific.

FRESHMAN.

Same as Classical, except the substitution of German and French for Greek.

SOPHOMORE.

Same as Classical, except the substitution of Bookkeeping for Greek.

JUNIOR.

First Term—Same as Classical, except the substitution of Calculus for French and Greek.

Second Term—Same as Classical, except the substitution of Calculus for French and Greek.

Third Term—Same as Classical, except the substitution of Calculus for French.

Fourth Term—Same as Classical, except the substitution of History of Art for French.

SENIOR.

Same as Classical.



STUDENTS,

College of Liberal Arts.

SENIOR CLASS.

| | | |
|-------------------------|------------|-----------------|
| Ailshie, J. F. | L. S*..... | Fairhaven, Wash |
| Frickey, Minnie. | L. S. | Salem |
| Gleason, Carrie A. | L. A. | Hubbard |
| Heerdt, Wm. | C. | Tillamook |
| Royal, Carrie L. | C. | Dayton |
| Steeves, B. L. | C. | Dayton |

Number, 6.

JUNIOR CLASS.

| | | |
|--------------------------|---------|------------------------|
| Dodson, Schuyler C. | C. | Dallas |
| Fitzgerald, J. J. | C. | Philomath |
| Forward, Allen. | C. | Willard |
| Jordan, W. H. | C. | Bickleton, Wash |
| Lansing, Minnie. | C. | Salem |
| Moore, F. L. | C. | Salem |
| Reichman, G. | C. | Etna Hills, California |

Number, 7.

SOPHOMORE CLASS.

| | | |
|---------------------|---------|--------|
| Brown, Fred J. | C. | Salem |
| Bruce, G. H. | C. | Turner |

*C indicates Classical Course; L A, Literature and Art; S, Scientific; L S, Latin Scientific; T, Teachers; Th, Theology; B, Business, and Sel., Selected Studies.

| | | |
|-----------------------|---------|-----------------|
| Bruce, Eva J. | C. | Turner |
| Foster, Eva M. | C. | Salem |
| French, Frank A. | C. | The Dalles |
| Pence, C. G. | S. | Fairhaven, Wash |
| Rounds, H. N. | C. | Salem |
| Winters, Cora. | C. | Salem |

Number, 8.

FRESHMAN CLASS.

| | | |
|---------------------------|------------|-------------------------|
| Bagley, Alvin W. | C. | Toledo |
| Basket, George L. | Sel. | Salem |
| Burke, Wm. E. | C. | Salem |
| Camp, B. C. | C. | Waitsburg, Washington |
| Ferris, Elizabeth E. | C. | Athens |
| Foley, John. | C. | Adams |
| Foster, H. W. | C. | Salem |
| Harrington, Ruth. | C. | Portland |
| Janes, Mabel. | C. | Salem |
| Lilly, May B. | C. | Willapa, Washington |
| Longley, J. A. | C. | Newberg |
| Pohle, Ella. | L. A. | Salem |
| Reynolds, Lloyd. | C. | Salem |
| Skidmore, J. H. | C. | Boise City, Idaho |
| Spaulding, G. G. | L. S. | Block House, Washington |
| White, O. A. | C. | Salem |

Number, 16.

University Academy.

THIRD YEAR CLASS.

| | | |
|--------------------------|------------|-------|
| Alderson, Anna. | L. S. | Salem |
| Baker, James W. | C. | Salem |
| Barker, Burt B. | C. | Salem |
| Bradshaw, Carrie P. | C. | Salem |
| Dearborn, R. H. | C. | Salem |
| Field, Edith. | C. | Salem |

| | | |
|---------------------|-------|--------------------------|
| Field Floyd | C | Salem |
| Fletcher, E. B. | T | Salem |
| Freeland, E. A. | C | Salem |
| Frizzell, Edith | C | Salem |
| Green, Birdie | T | Salem |
| Johnston, D. W. | L. S. | Tacoma, Washington |
| Jones, George W. | G. | Jefferson |
| Judkins, Stella | T | Alpowa |
| Kirby, E. G. | T | Salem |
| Mann, Fannie | T | Zena |
| Marsh, Myrtie | L. S. | Salem |
| Martzall, Cook | L. S. | Endicott, Washington |
| Masters, F. K. | C. | Portland |
| Matthiews, Frank C. | C. | Salem |
| McCarthy, C. F. | L. S. | Wasco |
| McClellen, E. A. | C. | Seattle, Washington |
| Mills, Alma | L. S. | Vancouver, Washington |
| Moore, Rosa E. | T. | Scio |
| Paul, Ida S. | T. | Walla Walla |
| Paul, Eva. | T. | Walla Walla |
| Pierce, H. F. | C. | Milton |
| Reynolds, John F. | C. | Salem |
| Rhinehart, Nellie | L. S. | La Grande |
| Richardson, Willis. | Sel. | Ellensburg, Washington |
| Rice, Clyde | C. | Salem |
| Rounds, Ollie. | T. | Waterville, Washington |
| Sanders, E. M. | C. | North Powder |
| Schneider, C. D. | C. | Pataha, Washington |
| Sharp, B. J. | C. | Salem |
| Smith, Florence | T. | Marshfield |
| Spencer, Jessie | C. | Lopez Island, Washington |
| Stafford, A. A. | C. | Skipanon |
| Stolz, Walter T. | L. S. | Salem |
| Strahan, Claude | C. | Salem |
| Sullivan, Willis E. | C. | Hailey, Idaho |
| Vanduyne, Frank | B. | Salem |
| Watts, Wm. T. | L. S. | Scappoose |

Williams, Frank S. C. Salem
Number, 46.

SECOND YEAR CLASS.

| | | |
|-------------------------------|----------------|--------------------------|
| Adams, Cora. | Sel. | Salem |
| Aitken, Belle | T | Salem |
| Amon, D. L. | Th. | Harrington, Washington |
| Benn, Minnie | B | Aberdeen, Washington |
| Blake, Charlotte E. | Sel | Canyon City |
| Brown, Frank E. | B. | Salem |
| Calder, Willis | B | Brownsville |
| Cleaver, Gertrude | L. S | Mount Angel |
| Cline, Grace | C | Salem |
| Cline, Horace A. | C. | Salem |
| Eastham, Ivy M. | T | Mount Angel |
| Eastham, J. L. | B. | Mount Angel |
| Eastham, O. W. | C | Mount Angel |
| Field, Frank | B. | Snohomish, Washington |
| France, Minnie | T | Hoquiam, Washington |
| France, W. H. | T | Hoquiam, Washington |
| Gardner, Leonard | C | Dexter |
| Glass, D. H. | C | Portland |
| Hall, Edward E. | C | East Portland |
| Hare, Etta | T | Salem |
| Harris, May | T | Elgin |
| Heitman, I. I. | C | Bay Center, Washington |
| Hibbard, H. G. | C | Silverton |
| Holbrook, Milo | C | Portland |
| Holmes, Frank | C | Salem |
| Holverson, Gertrude | L. H | Salem |
| Hudson, Lizzie | T | Scio |
| Jacks, Ella | B. | Tacoma, Washington |
| Johnson, Thilda | C. | Salem |
| Johnson, Barton W. | C | Salem |
| Johnson, L. M. | B. | Lopez Island, Washington |
| Jones, D. W. | B. | Salem |
| Kerns, J. A. | B | East Portland |

| | | |
|-------------------|-------|-------------------|
| Kerns, C. C | C | East Portland |
| Lewis, Webb C | B. | Rickreall |
| Litchfield, Cora | L. S. | Salem |
| MacCulloch, Rilla | L. S. | Ballston |
| Marks, J | C. | Aurora |
| McKinney, Oma | B. | Turner |
| Meredith, B. F. | Sel | Salem |
| Moore, Crawford | Sel | Boise City, Idaho |
| Morrison, A. D | B. | Oakville |
| Palmer, Lora | T. | Baker City |
| Patty, Wm. R. | T. | Amity |
| Putman, Otis | B. | Eola |
| Richardson, D. W | C. | Salem |
| Robbins, Herbert | B | Needy |
| Roberts, A. W | L. S | Elgin |
| Robnett, J. H | L. S | Halsey |
| Roork, Gracie M. | T. | Salem |
| Royal, E. O | C. | East Portland |
| Smith, W. C | C. | Turner |
| Sroat, Bertha | C | Salem |
| Taylor, Bertha | T. | Macleay |
| Taylor, Orpha | T. | Macleay |
| Temple, Isaiah | B. | Pendleton |
| Thurlow, Samuel | Th. | Salem |
| Uren, Fannie | B. | Prineville |
| Wiesner, E. G. | C. | Howell |
| Willis, H. A. | T. | Salem |
| Zimmerman, L. W | Th. | Salem |

Number, 59.

FIRST YEAR CLASS.

| | | |
|--------------------|-------|------------------------|
| Alderson, F. G. | L. S. | Goldendale, Washington |
| Baharrell, Wm. H. | Sel. | Portland |
| Balderree, Rebecca | T. | Gardner |
| Barnes, Leroy W | Sel | Salem |
| Bateson, E. P. | T. | Gervais |
| Beamer, H. C. | B | Hailey, Idaho |

| | | |
|----------------------|-------|-------------------------|
| Bentley, Chesley J. | B. | Marquam |
| Beardsley, Jessie | Sel | Eola |
| Bitney, W. R. | C. | Echo |
| Brown, Lue R. | C. | Tacoma, Washington |
| Brown, P. L. | B. | Silverton |
| Buell, Charles | T. | Salem |
| Burkhart, Bessie B | L. S. | Albany |
| Byrne, Angelo | C. | Salem |
| Carter, Miles C. | B. | Union |
| Combs, Ida M | T. | John Day |
| Day, George W. | B. | Tillamook |
| Day, John | B. | Tillamook |
| Dickenson, O. H. | B. | Fort Jones, California |
| Dimmitt, W. E. | T. | Lowell |
| Duenkel, Emma | L. S. | Tacoma, Washington |
| Evans, J. A. | T. | Salem |
| Field, Hetta | Sel | Salem |
| Freeland, Charles E. | L. S. | Salem |
| Frickey, Wm. | B. | Crown Rock |
| Frizzell, Eithel | L. S. | Salem |
| Gibson, Matthew | B. | Clymer |
| Giltner, Georgia M. | T. | Salem |
| Gouley, H. H. | B. | Brooks |
| Grider, T. M. | B. | Astoria |
| Grimes, M. J. | T. 1 | Sweet Home |
| Gunn, Hattie | L. S. | Goldendale, Washington |
| Hemstock, A. B. | L. S. | McMinnville |
| Henderson, Mary | L. S. | Corvallis |
| Henness, Asa | B. | Ilwaco, Washington |
| Henness, Lena | T. | Ilwaco, Washington |
| Hughes, Ethel | L. S. | Salem |
| Iler, Emma | T. | Butteville |
| Irwin, Adda | C. | Chemawa |
| Irwin, George H. | B. | Chemawa |
| Jessup, Albert | L. S. | Salem |
| Kayser, C. F. | B. | Block House, Washington |
| Kerns, John | C. | East Portland |

| | | |
|--------------------------|------|---------------------------|
| King, Stella..... | T | Hoquiam, Washington |
| Laycock, W. C..... | B | John Day |
| Lee, Nina..... | B | Echo |
| Legg, B. A..... | B | East Portland |
| Lisle, Charles..... | B | Echo |
| Lowry, Sadie..... | T | Gray's Harbor, Washington |
| McDonald, Belle..... | T | Grant |
| McKinney, Onie..... | T | Turner |
| Messick, Marie..... | T | Salem |
| Metchan, Julia..... | T | Salem |
| Metchan, Phil. L..... | B | Salem |
| Miller, S. J..... | L. S | Goldendale, Washington |
| Okawa, E..... | Th | Gummauken, Japan |
| Palmer, Mary E..... | T | Salem |
| Parvin, J. R..... | L. S | Salem |
| Powers, J. W..... | T | Wallowa |
| Ratzeburg, Tillie H..... | T | Salem |
| Rayfield, L. F..... | Th | Salem |
| Rinehart, Ellis..... | B | Shedd |
| Rutledge, George..... | L. S | Little Rock, Washington |
| Royal, Orr..... | C | Salem |
| Sanders, G. E..... | C | Goldendale, Washington |
| Shoemaker, E. B..... | B | Centreville, Washington |
| Smith, Virgil..... | T | Shedd |
| Spencer, Walter V..... | C | Lopaz Island, Washington |
| Stilwell, Lena..... | T | Dayton |
| Stone, Ada E..... | C | Milton |
| Sweet, F. M..... | Sel | Salem |
| Talbott, Annie F..... | T | Salem |
| Townsend, Alice..... | T | Salem |
| Townsend, Walter..... | T | Salem |
| Trapp, Ethel..... | L. S | Chitwood |
| Vandevort, H. H..... | Sel | Salem |
| Vandevort, Lydia..... | T | Salem |
| Vaughn, Oma..... | T | Coberg |
| Wade, Jennie..... | T | Lostine |
| Washburne, Bertha..... | T | Junction City |

| | | |
|---------------------|-----|-----------|
| Williams, Mary M... | T | Tillamook |
| Williams, Lucy T... | T | Salem |
| Winn, George W... | Sel | Monroe |

Number, 83.

Grammar School.

FIRST GRADE.

| | |
|------------------------|---------------------------|
| Akin, Lillie | Enterprise |
| Akin, Zanna | Enterprise |
| Anstie, Mary, Mrs..... | Aberdeen, Washington |
| Bennett, Effie C. | Seattle, Washington |
| Briggs, Mary..... | Salem |
| Brockman, Joseph.. | Cottonwood, Idaho |
| Burkhart, Wm. C | Albany |
| Cleaver, A. C.... | Mount Angel |
| Coffey, J. A | Cottonwood, Idaho |
| Conniff, Dante.. | Snohomish, Washington |
| Cooper, Lillian..... | Salem |
| Dennis, Winnifred | Salem |
| Elliott, Minnie..... | East Portland |
| Elrey, Charles... | Port Angeles, Washington |
| Ferguson, Walter H | Adams |
| Fisher, Charles V..... | Salem |
| Foster, Wm. C..... | Prineville |
| Glenn, Alice..... | Salem |
| Grider, Earl..... | Astoria |
| Hamilton, Fred..... | Cascades |
| Henderson, Wm. J..... | Corvallis |
| Hennes, Vane..... | Ilwaco, Washington |
| Hewitt, L. L..... | Wheatland |
| Higdon, Wm..... | Vancouver, Washington |
| Hill, Walter... | Salem |
| Howard, Wm. A..... | Aurora |
| Hunt, Ralph W. | Port Townsend, Washington |
| Jacks, Lorena M..... | Tacoma, Washington |
| Johnson, Claude..... | Salem |

| | |
|--------------------------|-----------------------|
| Kallgren, Chas..... | Etna, Washington |
| Knight, Frank..... | Salem |
| Kurtz, Andrew..... | Salem |
| Lyons, Chas. V..... | LaCenter, Washington |
| Manning, Boise L..... | Vancouver, Washington |
| Martin, George | Ashland, Missouri |
| Mason, Franklin E..... | Lexington |
| May, Mrs, Frances J..... | Salem |
| McDonald, Rebie..... | Salem |
| Patton, Clare..... | Salem |
| Richardson, Boyd..... | Salem |
| Roberts, Harry W..... | Colfax, Washington |
| Rosebrook, David..... | Toledo |
| Ross, Emory W..... | Seaside |
| Royal, Evalena..... | Salem |
| Sharp, Herbert E..... | Salem |
| Shinn, Sepha..... | Corvallis |
| Swift, Dean..... | Portland |
| Thayer, Alice..... | Tillamook |
| Thornton, L. M..... | Wheatland |
| Ward, Edward..... | Echo |
| Ward, Charles..... | Echo |
| Wilson, Alice I..... | Salem |
| Wood, John L..... | Galloway |

Number, 53.

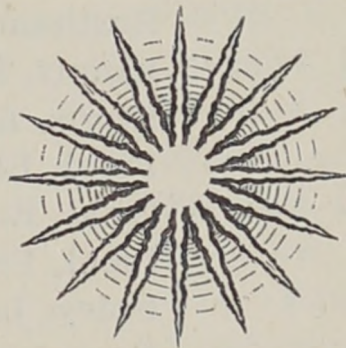
SECOND GRADE.

| | |
|------------------------|----------|
| Arnold, Frances A..... | Salem |
| Arnold, Ella A..... | Salem |
| Cline, Agnes..... | Salem |
| *Cline, Ewing M..... | Salem |
| Daley, John B..... | Salem |
| Dennis, Oscar..... | Salem |
| Evans, Schuyler..... | Woodburn |
| May, Dorothea C..... | Salem |
| Starr, Stanley A..... | Salem |
| Starr, Ethel..... | Salem |

| | |
|--------------------------|-------|
| Starr, Eda | Salem |
| McKay, Maude | Salem |
| McElroy, John C | Salem |
| Van Scoy, Lena M | Salem |
| Wait, Lena | Salem |
| Whittemore, Bertha | Salem |

*Deceased.

Number, 16.



ELOCUTION AND ORATORY.

Adair, Mabel
Alderson, T. G.
Allyn, Lottie
Ailshie, James F.
Bagley, Alvin W.
Baharrell, Wm.
Balderree, Rebecca
Bellenger, Clyde
Bellenger, Grace
Bennett, Effie C.
Bitney, Walter R.
Blake, Charlotte E.
Bradshaw, Carrie
Brown, Elma
Brown, F. J.
Brown, Frank
Brown, Lulu
Bruce, Eva J
Bruce, G. H.
Burkhart, W. E.
Burkhart, Bessie
Bushnell, Grace
Cline, Horace A
Coffey, J. A.
Culver, Josephine

Duenkel, Emma M.
Eastham, Ivy
Eastham, Orange
Elliott, Minnie D.
Ferris, Elizabeth E.
Field, Floyd
Field, Edith
Field, Frank
Foley, John
Foster, Eva M.
France, W. H.
Freeland, E. A.
Frickey, Minnie
Frizzell, Edith
Glass, D. H.
Gouley, Homer H.
Guerller, Homer
Gunn, Harriet
Harrington, Ruth
Harris, Nora
Heerdt, William
Henderson, Mary
Heitman, Isaac
Hofer, Mrs. A. T.
Hudson, Mary

Cunningham, Minnie
Dearborn, Kate
Denton, Gertie
Dodson, Schuyler C.
Johnson, Thilda
Jordan, Wm. H.
Jory, Blanche
Judkins, Stella C.
Kayser, C. F.
Kimball, Tenta
Lilly, May B.
Litchfield, Cora
Lockley, Daisy
Mann, Balm
Mann, Fanny
Marsh, Myrtle
Mathews, J. T.
Mathews, Helen
McCulloch, Rilla J.
McElroy, Coleridge
Metchan, P. L.
Mills, Alma
Moore, Frank L.
Moore, Rosa
Nelson, N. O.
Northup, Jessie
Palmer, Lora
Parvin, Ray
Peebles, Grace
Pierce, H. T.
Pohle, Grace
Reynolds, Mary E.

Hughes, Ethel
Iler, Emma
Irwin, Adda
Janes, Mabel
Rhinehart, Nellie
Rice, Clyde O.
Roork, Grace M.
Rounds, H. N.
Rounds, Ollie
Sanders, E. M.
Sargeant, Lulu
Schneider, Charles D.
Skidmore, J. H.
Smith, Florence L.
Smith, V. S.
Spencer, Jessie
Stafford, A. A.
Stone, Ada
Strahan, Claude
Thurlow, S.
Uren, Fanny
Vandevort, Lydia
Van Eaton, Ethel
Vanduyn, Frank
Vaughn, Oma
Washbourne, Bertha
White, O. A.
Williams, Mary
Williams, Fred S.
Wilson, Alice
Winters, Cora
Zimmerman, L. W.

Reynolds, Lloyd.

ART DEPARTMENT.

STUDENTS,

| | |
|-----------------------|-------------------------|
| Alderson, Mrs. W. C | Hubbard, Oregon |
| Anstie, Mrs. Wm | Aberdeen, Washington |
| Benn, Minnie | Aberdeen, Washington |
| Brown, Elma | Salem |
| Caldwell, Minnie | Walla Walla, Washington |
| Churchill, Floyd | Salem |
| Cline, Grace | Salem |
| Craig, Lily | Salem |
| Cunningham, Minnie | Salem |
| Fish, Mrs | Aberdeen, Washington |
| Foster, Mina | |
| Gleason, Carrie | Hubbard, Oregon |
| Gray, Jennie | Salem |
| Gunn, Hattie | Goldendale, Washington |
| Hales, Mrs | Pendleton, Oregon |
| Hendricks, Mrs. R. J | Salem |
| Hodgkin, Charlie | Salem |
| Hunt, Sarah | Salem |
| Iler, Emma | Butteville |
| Johnston, Mrs. G. W | Wasco, Oregon |
| Loose, Minnie | Zena, Polk County |
| Martzell, Cook | Endicott, Washington |
| Mathews, Mrs. James | Salem |
| Royal, Carrie C | Salem |
| Van Scoy, Mrs. Thomas | Salem |
| Wire, Melrie | Portland |

CONSERVATORY STUDENTS.

Post Graduate.

| | | |
|------------------------|-----------|-------|
| Chandler, Alzira..... | P. H..... | Salem |
| Harris, Edith..... | P..... | Salem |
| Southwick, Nellie..... | P..... | Salem |
| Steiner, Mary..... | P. H..... | Salem |

Virtuoso Course.

FIFTH GRADE.

| | | |
|------------------------|--------------|-------------------------------|
| Adair, Mabel..... | P. V. H..... | Salem |
| Carpenter, Nellie..... | P. V. H..... | Vanconver, Wash. |
| Combs, Manda..... | V. P. H..... | Prineville |
| Ginn, W. A..... | V. H. P..... | Dallas |
| Kruse, H. A..... | P. H. V..... | Oregon City |
| Shafer, Mary E..... | V. P. H..... | Turner |
| Blake, Charlotte..... | P. H. | Bushnell, Grace..... P. V. H. |
| Krebbs, Annie..... | P. V. H. | |

FOURTH GRADE.

| | | | |
|--------------------------|-----------|-------------------------|----------|
| Adams, Edna..... | P. | Hubbard, Bertha..... | P. H. |
| Alderson, Maggie..... | P. | Hutton, Mabel..... | P. |
| Bier, Lena..... | P. | Jacks, Ella..... | P. |
| Cooley, C. J..... | Vi. H. P. | Rinehart, Nellie..... | P. |
| Duenkle, Emma..... | P. | Sargeant, Lulu..... | V. P. H. |
| Dorrance, Ella..... | V. H. P. | Smith, Claire..... | P. |
| Hellenbrand, Lottie..... | P. | Smith, Mrs. Minnie..... | V. P. |
| Stapleton, Ada..... | H. | | |

NOTE:—P. indicates Piano; V., Voice; H., Harmony; O., Organ; Vi. Violin; C. P., Counter Point. The first abbreviation shows the highest standing, when more than one occurs.

THIRD GRADE.

| | | | |
|-----------------------------|-------|----------------------------|-------|
| Albert, Myra | V. | Levy, Hortie | P. |
| Beamer, Etta | P. V. | Martzall, Cook | H. P. |
| Benn, Minnie | P. | Mathews, Oskie | P. |
| Brown, Lue | P. | McNary, Ella | P. |
| Cochran, Azalia | P. | Neil, Grace | O. |
| Cornelius, Aria | O. | Reuf, Gusta | O. |
| Dalrymple, Jessie | V. | Rosebrook, D. C | H. |
| Downing, Ida | P. | Robinson, Wilma | P. |
| Guild, Mrs | V. | Staley, Gertrude | P. |
| Hepburn, Myrtle | V. P. | Steiner, Lillie | O. |
| Holmes, Jessie | P. V. | Stege, Jessie | O. |
| Hughes, Ethel | P. | Uren, Fannie | P. |
| Janes, Mabel | P. | Waggener, Lura | V. |
| Jory, Blanche | P. | Washburn, Bertha | P. |

SECOND GRADE.

| | | | |
|------------------------------|----------|-----------------------------|-------|
| Anstie, Mrs | P. | James, Mabel | O. |
| Balderree, Rebecca | P. | Knight, Edna | V. |
| Barnes, Rhoda | V. P. | Legg, Fred A | V. |
| Becket, Mrs | P. | Lewis, Mrs. F | O. |
| Brown, Mrs | O. | McCausland, Mrs | P. |
| Churchill, Clara | P. | McKinney, Jennie | O. |
| Combs, Ida | V. | Rounds, Ollie | P. V. |
| Dayton, Ada | P. | Schmidt, Alma | O. |
| Earley, Simon | O. | Rotan, Ines | P. |
| Edgar, Ella | O. | Simon, Emma | V. |
| Farrens, Georgia | O. | Sorber, Mrs | P. |
| Fletcher, Ethel | P. | Steiner, Florence | O. |
| Foster, Herbert | V. | Stevens, May | O. |
| Frizzell, Eithel | P. | Sweet, Florence | P. |
| Goodell, Edna | O. | Tapp, Sophia | P. |
| Gwynne, Amy | P. | Thomas, Ada | V. |
| Harris, Nora | H. P. V. | Thompson, Ella | P. |
| Harris, May | P. V. | Vaughn, Orma | P. |
| Henderson, Mary | P. | Wade, Jennie | P. V. |
| Hirsch, Meyer | Vi. | Walker, Mary | O. |

| | | | |
|-----------------|-------|-------------------|----|
| Holcomb, Lena | P. | Williams, Etta | P. |
| Holmes, Clara | P. | Woodford, Blanche | P. |
| Woodford, Grace | P. V. | | |

FIRST GRADE.

| | | | |
|----------------------|----|------------------|-------|
| Blosser, Cora | P. | Kurtz, Agnes | P. |
| Brandt, Florence | P. | Lewis, Clyde | O. |
| Brown, Sylvia | P. | Muelhaupt, Lydia | P. |
| Bruce, Minnie | O. | Palmer, Maggie | O. |
| Bruce, Walter | O. | Peebles, Addie | P. |
| Chapman, Mrs. B. | O. | Pugh, Percy | O. |
| Cline, May | P. | Rinehart, Ellis | V. P. |
| Coggsell, Mrs. C. A. | P. | Richardson, Ruth | V. P. |
| Cook, Sadie | P. | Royal, Lena | O. |
| Cottle, Belle | P. | Smith, Eva | P. |
| Crocker, Vera | O. | Starr, Emma | O. |
| Day, Johnnie | O. | Steiner, Mrs. D. | O. |
| Folsom, Maggie | P. | Stillwell, Lena | P. |
| Golden, Anna | P. | Thayer, Alice | V. |
| Gouley, Homer | P. | Wetzell, Herbert | O. |
| Hutton, Lena | P. | Williams, Mary | P. |
| Howard, Edith | V. | Willis, Carrie | P. |
| Howard, Effie | O. | Wilson, Maud | O. |

READING CLASSES.

No. 1.

Adair, Mabel
Carpenter, Nellie
Southwick, Nellie

Harris, Edith
Kruse, H. A.

No. 2.

Chandler, Alzira
Steiner, Mary.

Brown, Mrs. Mamie

No. 4.

Blake, Charlotte
Bushnell, Grace
Duenkle, Emma

Jacks, Ella
Shafer, Mary
Jacks, Ella

No. 5.

Alderson, Maggie
Hellenbrand, Lottie

Hutton, Mabel
Smith, Claire

No. 6.

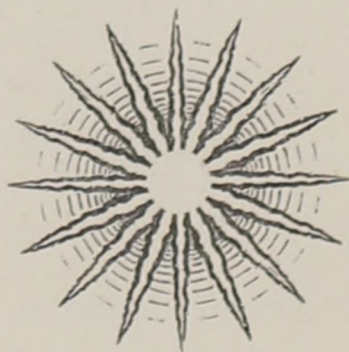
Anstie, Mrs.
Henderson, Mary

Martzall, Cook
Vaughn, Oma

No. 7.

Beamer, Etta
Janes, Mabel

Sargeant, Lulu



CATALOGUE OF STUDENTS FOR COLLEGE YEAR

1890 1891.

MEDICAL COLLEGE.

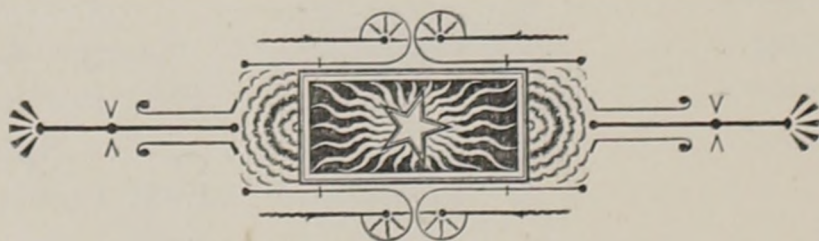
| | |
|--------------------------|-------------------------|
| M. A. Helms..... | Walla Walla, Washington |
| Arthur Chaver..... | Portland, Oregon |
| Florence Blotsford | Albina, Oregon |
| K. A. Leep..... | Halfway, Oregon |
| A. J. Vial..... | Portland, Oregon |
| Eugene Clymer..... | Fossil, Oregon |
| Carribelle Hoghen..... | Portland, Oregon |
| Geo. J. Fanning..... | Oregon City, Oregon |
| F. E. Chambers..... | East Portland, Oregon |
| I. M. Smith..... | Spices, Oregon |
| W. E. Perry | East Portland, Oregon |
| J. E. West..... | East Portland, Oregon |
| J. D. Shaw..... | Salem, Oregon |
| A. J. Ap John..... | Portland, Oregon |
| C. E. Boyne..... | Arayo, Oregon |
| Emil Schubert..... | Oregon City, Oregon |
| James Mac Masters..... | Portland, Oregon |
| W. B. Morse..... | Salem, Oregon |
| S. E. Hibbard..... | Portland, Oregon |
| Eugene W. Stevens | Latah, Washington |
| O. W. Yeargain..... | St. Helens, Oregon |
| Frank Welch..... | Portland, Oregon |
| Henry Valf | Vancouver, Washington |
| George Givens | Albany, Oregon |

H. W. Little Portland, Oregon
J. W. BatchelorEast Portland, Oregon

List of Graduates 1891.

EUGENE CLYMER,
WILLIS B. MORSE,

GEO. J. FANNING,
ORVILLE W. YEARGAIN.



SUMMARY OF STUDENTS.

| | |
|---|-----|
| COLLEGE OF LIBERAL ARTS :— | |
| Males 25, Females 12..... | 37 |
| COLLEGE OF THEOLOGY : | |
| Males 11 | 11 |
| UNIVERSITY ACADEMY : | |
| Males 157, Females 100..... | 257 |
| CONSERVATORY OF MUSIC : | |
| Males 11, Females 126..... | 137 |
| ELOCUTION AND ORATORY : | |
| Males 47, Females 68. | 115 |
| ART DEPARTMENT : | |
| Males 3, Females 23..... | 26 |
| COLLEGE OF MEDICINE : | |
| Males 24, Females 2.... | 26 |
| COLLEGE OF PHARMACY : | |
| Males...Females | 18 |
| COLLEGE OF LAW : | |
| Males 6..... | 6 |
| <hr style="width: 20%; margin-left: auto; margin-right: 0;"/> | |
| TOTAL..... | 633 |
| Counted more than once | 138 |
| Net total | 495 |

ALUMNI.

College of Liberal Arts.

C. B. MOORES, Class of '70 PRESIDENT OF THE ASSOCIATION
NELLIE BOISE, Class of '88. SECRETARY
MISS MINNIE CUNNINGHAM, 80. TREASURER

1859,

Mrs. Emily J. (York) Moore, B. S Portland

1862.

Mrs. Addie B. (Locey) Reasoner, B. S (Died 1867)

1863.

T. H. Crawford, A. M. principal Portland Public Schools . . Portland
Francis H. Grubbs, A. M. Alaska
Jno. C. Grubbs, A. M., (M.D., University of Michigan) Died 1878
Mrs. Emily N. (Belt) Jordan, B. S Oakland, California
Colin T. Finlayson, B. S., Teacher Died 1873
Mrs. Margaretta (Grubbs) Odell, B. S., Teacher. Eugene
Mrs. Lucy A. M. (Lee) Grubbs, B. S Died April, 1881
Mrs. Mary (McGhee) Day, B. S Jacksonville
Alva McWhorter, B. S. Died 1864
Mrs. Angeline (Robb) Drake, B. S. Portland
Mrs. Nellie J. (Stipp) Curl, B. S., Teacher. Died 1879
John B. Waldo, B. S., Attorney-at-Law Salem

1864.

| | |
|--|----------------------|
| Charles W. Parrish, A. M., Attorney-at-Law | Canyon City |
| Sylvester C. Simpson, A. M., Attorney-at-Law | San Francisco |
| Mrs. Eliza A. (Cross) O'Donald, B. S | Salem |
| Joseph P. Jones, B. S., Attorney-at-Law | Martinez, California |
| Mrs. Annie R. [Robb] Parrish, B. S. | Canyon City |
| Mrs. Clara A [Watt] Morton, B. S. | Portland |
| Mrs. Pauline [Whitson] Shelton, B. S | Died 1869 |

1865.

| | |
|---|--------------|
| Presley M. Denney, A. B., Attorney-at-Law | Beaver, Utah |
| Parrish L. Willis, A. B., Attorney-at-Law | Portland |
| Charles W. Kahler, B. S., Attorney-at-Law | Jacksonville |
| Mrs. Jannette [McCalley] Stowell, B. S | Portland |
| Mrs. Frances A. [Wilson] Gill, B. S. | Portland |

1866.

| | |
|--|--------------------|
| Nehemiah L. Butler, A. B., Attorney-at-Law | Dallas |
| Edward E. Dodge, A. B., Minister M. E. Church | California |
| John M. Garrison, A. M. | Forest Grove |
| Henry H. Gilfry, A. M., Reading Clerk U. S. S. | Washington |
| Joseph Hannon, A. M., Attorney-at-Law | Died July 30, 1878 |
| James R. N. Sellwood, A. M., Teacher | East Portland |
| Joseph A. Sellwood, A. M., Teacher | Salem |
| Samuel L. Simpson, A. B. Journalist | Portland |
| William T. Wythe, A. M., Physician | Died 1880 |
| Johh M. Bewley, B. S., Dentist | |
| Mrs. Fannie S. (Case) Moreland, B. S | Portland |
| Mrs. Elizabeth Harrison, B. S | Died 1886 |
| Mrs. Frances M. (McFarland) Simpson, B. S | San Francisco |
| Mrs. Jane E. (Miller) Kellogg, B. S. | Heppner |
| Mrs. Maay A. (Robinson) Gilkey, B. S | Dayton |
| Mrs. Marie E. (Smith) Marsh, B. S | East Portland |
| Mrs. Ellen E. (Starkey) Bybee, B. S | Portland |
| Mrs. Irene H. (Stratton) Willis, B. S | Portland |
| Mrs. Helen L. Williams) Stratton, B. S | Oregon City |

1867.

Mrs. Susan (Harrison) McKinney, B. S., Teacher Baker City
 Mrs. Louisa A. (Simpson) Stowell, B. S. Died 1888
 Mrs. Eliza (Witten) Lee, B. S. The Dalles
 Mrs. Sarah J. (Wythe) Williams, B. S. Died 1881
 Mrs. Mary L. (Wythe) Dodge, B. S. California

1868.

Mrs. Josie (De Vore) Johnson, A. M. Oregon City
 George E. Strong, A. M. Died 1881
 Edmund J. Waller, A. M. California
 John C. Arnold, B. S. Pendleton
 Benjamin F. Bond, B. S., Physician. Died 1874
 James K. Buff, B. S., Teacher. Silverton
 Joseph L. Carter, B. S., Druggist. Island City
 Miss Ellen J. Chamberlin, B. S., Teacher University of
 Washington. Seattle
 James Chambers, B. S., Farmer Died 1883
 J. S. Denison, B. S., Physician Pataha, Washington
 Mrs. Emma L. (Freeland) Dashields, B. S. ... Potter's Valley, Cal.
 William Galloway, B. S. McMinnville
 Mrs. Angie (Grubb) Engle, B. S. Roseburg
 Miss Dora M. Lamson. B. S. Tacoma
 Mrs. Ida M. [Pratt] Babcock, B. S. Salem

1869.

James Chambers, A. M., Farmer. Died 1883
 Mrs. Ellen [Kelly] Bush, A. M. Boise City, Idaho
 Carroll C. Stratton, A. M. [D. D., N. W. U.] minister Salem
 Julius A. Stratton, A. M. Attorney-at-Law Seattle
 Mrs. Emma S. [Boswell] Turner, B. S. Colfax, Washington
 George Comegys, B. S., Farmer. Colfax, Washington
 Henry C. Comegys, B. S., merchant Snohomish, Washington
 Matthew J. Patton, B. S., Physician. Salem
 Miss Elenanora T. Simpson, B. S., Teacher East Portland
 Miss Emily L. Small, B. S. Died April 1, 1873
 Mrs. Carrie P. [Swain] Johnson, B. S. Honolulu, S. I.

Mrs. L. Bell [Wilson] Wythe, B. S. Oakland, California

1870.

Milton T. Crawford, A. M., Teacher. Colfax, Washington

Henry H. Hewitt, A. M., Attorney-at-Law. Albany

Millard O. Lownsdale, A. B. Portland

Edwin E. McKinney, A. B., Merchant. Turner

Charles B. Moores, A. B., [LL. B., University of Michigan] Attorney-at-Law. Salem

Mrs. Mary E. [Case] Felt, B. S. Los Angeles, California

Mrs. Mary [Chapman] Wilson, B. S. Empire City

Tilmon Ford, B. S., Attorney-at-Law. Salem

Mrs. Mattie E. [Gilbert] Scott, B. S. The Dalles

Mrs. Hattie [Gilliland] Hannan, B. S. Roseburg

Mrs. Gertrude E. [Moores] Miller, B. S. Died October 12, 1887

Miss Mattie Nail, B. S., Teacher. Ashland

1871.

Frank M. Hobson, A. B. Died 1871

Madison L. Jones, A. M. Brooks

Lafayette Williams, A. B., Cashier. Moscow, Idaho

Augustus B. Bonney, B. S., Farmer. The Dalles

Mrs. Sarah E. [Bridges] Cromwell, B. S. Los Angeles, Cal.

Mrs. Virginia [Condit] McKinney, B. S. Turner

Miss Phoebe Jory, B. S. Salem

Mrs. Eliza [Robertson] Stillwell, B. S. Dayton

Mrs. Amelia E. [Scriber] Miller, B. S. Salem

1872.

Hubbard Bryant, B. S., Attorney-at-Law. Albany

Mrs. Dora P. [Simpson] Killingsworth, B. S. East Portland

Mrs. Elva A. Wheeler, B. S. Portland

1873.

James J. Imbrie, A. B., Farmer. Yakima, Washington

Mrs. Jane E. [Miller] Kellogg, A. M. Heppner

Ladru Royal, A. M., Real Estate. Portland

Miss Emily Shattuck, A. M. Died June, 1879

Mrs. Libbie [Brown] ——— B. S. Portland
 Mrs. Lydia E. [Chamberlin] Crockett, B. S. . . . Seattle, Washington
 Mrs. Sallie E. [Chamberlin] Moores, B. S. Salem
 Robert Eakin, B. S., Attorney-at-Law Union
 Mrs. Teresa D. [Holderness] Byrd, B. S. Died August 29, 1886
 Mrs. Mary J. [Jory] Reynolds, B. S. Lyle, Washington
 Wm. H. Meisse, B. S., Minister M. E. Church Died July, 1880
 Wm. J. Miller, B. S., Teacher Pennsylvania
 Alfred Nicholas, B. S., Clerk Died 1887
 Mrs. Velleda [Smith] Ohmart, B. S. Salem

1874.

Stanley O. Royal, A. M., B. D. [Drew] minister Urbana, Ohio
 Mrs. Elva R. [Breyman] Brown, B. S. Salem
 Mrs. Alice E. [Case] Borthwick, B. S. Portland
 Miss Sarah E. Cole, B. S. Died 1876
 John N. Duncan, B. S., Attorney-at-Law Albany
 Miss Ann E. McKinney, B. S. Clymer
 Miss Ella Stannus, B. S. Honolulu

1875.

M. G. Royal, A. M., minister, Assistant Secretary of
 State Olympia, Washington
 S. A. Starr, A. M. [B. D. Drew] Minister and Professor
 in Willamette University Salem
 Wilbur F. Starr, A. B., Farmer Monroe
 Mrs. Georgia S. [Carpenter] Brodie, B. S. Portland
 H. Z. Foster, B. S. Sheridan
 Mrs. Lizzie C. [Jory] Swaine, B. S. Pataha City, Washington

1876.

Wiley B. Allen, A. B., Stationer and Book and Music
 merchant Portland
 Mrs. Teresa D. [Holderness] Byrd, A. B. Died August 29, 1886
 Albert N. Moores, A. B., Sec. Capital Lumbering Co. Salem
 Miles T. Starr, A. B., Farmer Monroe
 Frank P. Mays, B. S., U. S. District Attorney Portland

Frank M. Johnson, B. S., Farmer.....Jefferson

1877.

Thomas C. Jory, A. M., Professor Willamette University.....Salem

Mrs. Hattie L. [Collier] McCornack, B. S.....Eugene

Mrs. Nettie A. [Cook] Lee, B. S.....Pendleton

Mrs. Sarelia W. [Griffith] Grubbe, B. S., Supt. Schools.....Salem

Quincy A. Grubbe, B. S., Attorney-at-Law.....Died August, 1887

Mrs. Ida [Hutton] Vaughn, B. S., Stenographer.....Portland

B. Frank Irvine, B. S.....

Miss Emma Jones, B. S., Teacher.....Gervais

Mrs. Annie [Lawrence] Haskin, B. S.....East Portland

Mrs. Ada E. [May] Stiewer, B. S.....Fossil

Frank M. McCully, B. S.....Joseph

Mrs. Nellie F. [Meacham] Redington, B. S.....Puyallup

Miss Althea Moores, B. S., Instructor Modern Languages,

Willamette University.....Died April 29, 1883

Miss Bertha Moores, B. S., Stenographer.....Portland

Richard J. Nichols, B. S., Farmer.....Monroe

Geo. A. Peebles, B. S., Principal Public Schools.....McMinnville

Miss Nora Ross, B. S.....Oregon City

1878.

George B. Gray, A. M.....Salem

George P. Hughes, A. M., merchant.....Salem

Charles A. Johns, A. M., Attorney-at-Law.....Baker City

Richmond Kelly, A. M., M. D., Professor Medical Depart-

ment, Willamette University.....Portland

D. P. Stouffer, A. B.....Dallas

Mrs. Mary E. [Strong] Kinney, A. M.....Astoria

Eugene Willis, A. B., Merchant.....Salem

Mrs. Cora L. (Dickinson) Moores, B. S.....Salem

Waller A. Graves, B. S., Druggist.....Sheridan

Mrs. Emma (Hovendon) Jones, B. S.....Brooks

Mrs. Henrietta (McKinney) Downing, B. S.....Died Feb. 24, 1885

Miss Lizzie McNary, B. S.....Salem

Robert A. Miller, B. S., Lawyer.....Jacksonville

L. O. Nelson, B. S. Baker City
 Mrs. Emily (Parmenter) Cornell, B. S. Portland
 Miss Adelaide Scriber, B. S., Music Student Boston

1879.

Hugh Harrison, B. S., Farmer Jefferson
 Mrs. Viola (Johns) McKinney, B. S. Arlington
 Mrs. Sarah (Jones) Clark, B. S. Brooks
 John A. McKinney, B. S. Turner
 Miss Carrie E. Nichols, B. S. Salem
 Miss Loretta Yocum, B. S. Died March 5, 1886

1880.

Prank Spaulding, A. B., Minister Columbus, Washington
 Mrs. Lucy (Spaulding) Sullivan, A. B. Colfax, Washington
 Miss Gabie Clark, B. S., Teacher Portland
 Thomas B. Cornell, B. S., Merchant Jefferson
 Miss Minnie Cunningham, B. S., Teacher, Willamette University Salem
 Robert Harrison, B. S. San Francisco, California
 Miss Lulu M. (Hughes) Bush, B. S. Salem
 Mrs. Mary [McKinney] Bower, B. S. Spokane, Washington
 Miss Mary Reynolds, B. S., Teacher in Public Schools Salem
 William H. Stump, B. Died April 11, 1882

1881.

Mrs. Mattie E. [Jory] Myers, A. M., Teacher Pub. Schools Salem
 Mrs. Isabella M. [Prescott] White, A. B. Winlock, Washington
 Samual A. Randle, A. M. Salem

1882.

Mrs. Mary C. [Starr] Walts, A. B. Tulare, California

1883.

Charles K. Cranston, Ph. B., Portland Savings Bank Portland
 Charles A. Gray, Ph. B. Salem
 Arthur A. Stump, Ph. B. Died April 18, 1884

1884.

Marcus M. Walts, A. M., Minister.....Tulare, California
Edward H. Belknap, B. S.....Evenston, Ill.
Willis C. Hawley, B. S., Principal of Drain Academy.....Drain
Miss M. Ella Whipple, B. S., Physician...Pasadena, California

1885.

Abe L. Clark, A. M., Teacher.....Astoria
J. B. Horner, A. M., Principal Public Schools.....Roseburg
Kate D. [Reynolds] Goltra, A. B.....Portland
Percy Willis, A. B., Merchant.....Salem
Mrs. Jessie [Eastham] Van Scoy, Ph. B.....Salem
George M. Brown, B. S., Attorney-at-Law.....Roseburg

1886.

Mrs. Margaret A. [Caples] Hale, A. B.....Portland
Layfayette Conn, A. B., Attorney-at-Law.....Salem
Henry S. Goddard, A. B., Physician.....Fossil
Edgar B. Piper, A. B., Journalist.....Gray's Harbor, Washington

1887.

Wm. Dewesee, A. B., Minister.....Arlington
J. O. Goltra, A. B., Insurance Clerk.....Portland
S. W. Holmes, A. B., Principal Public Schools.....Sellwood
J. Benson Starr, A. B., Merchant.....Olympia, Washington
Jonathan Swayne, A. B., Minister...Pataha City, Washington
Florence L. Cunningham, B. S.....Salem
Bertha [Cunningham] Cavanagh, B. S.....Salem
John M. Peebles, B. S.....Linkville
Nellie S. Boise, B. L.....Salem
Kate Dearborn, B. L., Teacher Public Schools.....Salem

1888.

Willis C. Hawley, A. B., LL. B., Principal Drain Academy....Drain
William S. Hetzler, A. B.....Salem
Albert S. Mulligan, A. B., Minister.....Bickleton, Washington

| | |
|--|--------------------|
| Harold Oberg, A. B., B. D. | Evanston, Illinois |
| Mrs. Æolia F. [Royall] Oberg, A. B. | Evanston, Illinois |
| John Jenson, B. S., Minister. | Etna, Washington |

1889.

| | |
|---|------------|
| Wm. C. Alderson, A. B., Teacher. | Hubbard |
| Frank M. Anderson, A. B., Teacher. | Hubbard |
| Maggie B. [Brown] Alderson, A. B., Teacher. | Hubbard |
| Rebecca G. [Brown] Mathews, A. B. | Salem |
| James T. Mathews, A. B., Teacher Public Schools. | Salem |
| Wm. T. Rigby, A. B., Teacher. | Prineville |
| Mae E. Boise, B. L. | Salem |
| Laura M. Dimick, B. D. | Hubbard |
| Albert W. Bowersox, Ph. B. | Corvallis |

1890.

| | |
|---|--------------------|
| L. F. Belknap, A. B., Theological Student. | Evanston, Illinois |
| Allyn H. Cooke, A. B., Deputy County Recorder. | Salem |
| Levi Magee, A. B., Teacher. | |
| N. M. Newport, A. B., Reporter. | Salem |
| Virgil Peringer, A. B., Teacher. | |
| Wm. E. Perry, Medical Student. | East Portland |
| S. W. Stryker, Theological Student. | Evanston, Illinois |
| Olin F. Tower, Professor in Montana University. ... | Helena, Montana |
| Elvera Victor, Teacher in Public Schools. | Salem |

LAW GRADUATES.

1886.

| | |
|--------------------------------|-------------------|
| Chas. H. Pakenham, LL. B. | Boise City, I. T. |
|--------------------------------|-------------------|

1887.

| | |
|-------------------------------|---------------------|
| Daniel W. Bass, LL. B. | Seattle, Washington |
| I. G. Denny, LL. B. | McCoy |
| Victor J. Miller, LL. B. | Harney City |

1888.

| | |
|--------------------------|---------|
| J. N. Brown, LL. B. | Heppner |
|--------------------------|---------|

W. C. Hawley, LL. B. IA B. W. U. I. Drain

1890.

Samuel B. Crandall, LL. B. LaGrande

John O'Shea LL. B Salem

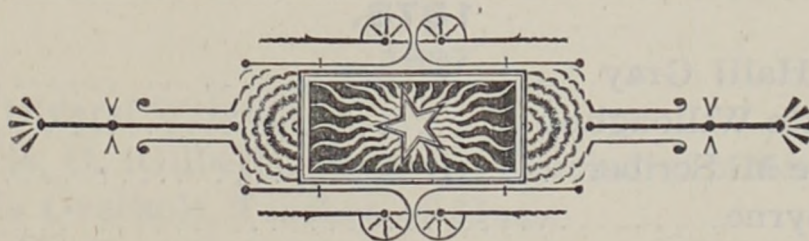
1891.

James F Ailshie, LL. B. Fairhaven, Washington

John B. Denny, LL. B. Seattle, Washington

Olof N. Nelson, LL. B. Seattle, Washington

Carlos H. Spalding, LL. B. Goldendale, Washington



MUSICAL ALUMNI.

MRS. OLIVE ENGLAND, Class of '83..... PRESIDENT
 MRS. AMELIA [Savage] RIELY, Class of '84.... Vice PRESIDENT
 MISS PEARL SCOTT, Class of '84 SECRETARY
 MISS LEONA WILLIS, Class of '85 TREASURER

1872.

Miss Libbie Woodard..... Died 1873
 Mrs. Teresa [Holderness] Byrd Died August 29, 1886

1878.

Mrs. Nellie [Hall] Gray..... Salem
 Miss Antonette Willoughby
 Miss Adelaide M. Scriber..... Boston
 Miss Eliza Byrne.....

1882.

Miss Gertrude Adams..... California

1883.

Miss Frankie P. Jones, Teacher Music..... Portland
 Miss Julia Chamberlin, Teacher of Music, State Univer-
 sity..... Seattle, Washington
 Mrs. Ollive S. England..... Salem
 Miss Constance Jordan, Teacher of Music..... Oakland, California

1884.

| | |
|---|---------------------|
| Miss Eva Cox, Teacher Music, Willamette University..... | Salem |
| Mrs. Levia [Rowland] Smith..... | Salem |
| Mrs. Amelia [Savage] Riely | Salem |
| Miss Pearl Scott, Teacher Music, Blind School..... | Salem |
| Miss Lulu Smith..... | Salem |
| Mrs. Mary C. [Starr] Walts..... | Spokane, Washington |

1885.

| | |
|--|--------------------------|
| Miss Lulu M. Smith, Assistant Teacher of Music, Willamette University..... | Salem |
| Mrs. Teresa S. [Akers] Young, Teacher of Music.... | |
| | New Kamilche, Washington |
| Miss Maggie Cosper, Teacher Public Schools..... | Salem |
| Miss Laura Goltra, Teacher of Music..... | Salem |
| Miss Ida Smith, Teacher of Music..... | Salem |
| Miss Leona Willis, Assistant Teacher of Music, Willamette University..... | Salem |

1886.

| | |
|---|-------|
| Mrs. Nellie [Cline] Wait, Teacher of Music..... | Salem |
| Mrs. Lizzie F. [Dearborn] Bozorth..... | Salem |

1887.

| | |
|--|----------------|
| Mrs. Effie [Byars] Wright..... | Salem |
| Mrs. Francis, O. [Gilbert], Hammer, Teacher of Music. | Albany |
| Miss Mamie Overholt, Teacher of Music..... | Canyon City |
| Mrs. Edith R. [Pentland] Bagley, Teacher of Music..... | Salem |
| Mrs. Emma M. [Stannus] Crowe, Teacher Music... .. | Laidlow, Wash. |
| Miss Hally Parrish, Teacher Voice..... | Portland |

1888.

| | |
|---------------------------------------|----------|
| W. A. Bagley, State Insurance Co..... | Salem |
| Miss Jessie Dalrymple..... | Salem |
| Mrs. Kate [Reynolds] Goltra..... | Portland |

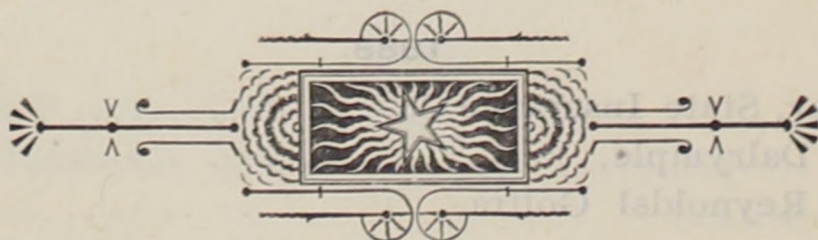
1889.

| | |
|---------------------------------------|-----------|
| Miss Lois Abrams, Teacher Piano..... | Lincoln |
| Miss Acta Forrest, Teacher Piano..... | Wheatland |

| | |
|--|--------------------|
| Miss Nellie Howe..... | Dallas |
| Miss Edith Hughes..... | Boston |
| Mrs. Mamie [Parvin] Brown, Teacher of Music..... | Heppner |
| Miss Lulu Thompson..... | Died April 1, 1890 |

1890.

| | |
|---|------------------------|
| Miss Edna Adams, Teacher Music..... | Salem |
| Miss Jessie [Glenn] Minto..... | Salem |
| Miss Alzira Chandler, Teacher Music..... | Salem |
| Miss Edith Harris, Assistant Teacher Music, Willamette University..... | Salem |
| Miss Ida Nesbitt, Teacher Music..... | Goldendale, Washington |
| Mrs. Nellie [Pricel] Hales, Teacher Music..... | Adams |
| Mrs. Daisy [Settlemyer] Chattin, Teacher music.. | Walla Walla, Wash. |
| Miss Nellie Southwick, Teacher Music..... | Salem |
| Miss Mary Steiner, Assistant Teacher Music, Willamette University..... | Salem |
| Miss Etta Stratton, Teacher of Music .. | Albany |



STUDENTS IN PHARMACY.

Seniors.

| | |
|-------------------------|----------|
| R. L. Collis..... | Portland |
| E. C. Robbins..... | Portland |
| Lena Knickerbocker..... | Portland |

Juniors.

| | |
|-----------------------|--------------------------|
| E. S. Baker..... | Olympia, Washington |
| F. L. Janeck..... | North Yakima, Washington |
| F. H. McClure..... | Portland |
| George E. Jacobs..... | Cleone |
| Ivy D. Morgan..... | Portland |
| S. G. Clarke..... | Portland |
| L. G. Acton..... | Portland |
| N. A. Spencer..... | Portland |
| W. B. Aldrich..... | Portland |
| George Keech..... | Portland |
| George Caudland..... | Portland |
| F. W. Haynes..... | Portland |
| L. D. Sholtner..... | Uniontown, Washington |
| Ned Munger..... | Portland |
| B. F. Jones..... | Portland |

MEDICAL ALUMNI.

D. B. Amick, '88
Wm. F. Amos, '90
J. P. Atwood, '70
Hiram A. Alden, '83
Wm. T. Alban, '83
W. D. Baker, '68
F. R. Eallard, '90
Jacob S. Barklow, '89
J. N. Bell, '69
H. E. Beers, '90
Olive K. Beers, '90
Benj. F. Bond, '69
L. Ordway Bostwick, '89
A. W. Botkin, '90
E. M. Brown, '69
Myra A. Brown, '89
Frank A. Bailey, '70
C. M. Boswell, '70
James A. Bean, '73
David M. Brower, '88
W. E. Bryant, '75
Wm. W. Beach, '74
L. W. Brown, '76
Jonathan Brown, '76
O. C. Blaney, '80
Ben T. Burton, '80

D. C. Byland, '84
Otis D. Butler, '87
Frederick Bass, '85
Byron McBride Caples, '89
W. A. Cusick, '67
Josephine Callahan, '90
F. M. Carter, '72
B. A. Cathey, '90
H. Vance Clymer, '90
Eugene Clymer, '91
D. W. Cox, '75
I. N. Cromwell, '75
C. Carlton, '79
H. W. Cox, '79
W. L. Chapman, '81
Herbert W. Cardwell, '87
E. M. Cheadle, '81
S. T. Davis, '85
J. E. Davidson, '68
J. S. Denison, '72
L. L. Davis, '75
O. D. Doane, '75
Z. T. Dodson, '77
O. M. Dodson, '77
R. M. Davis, '78
J. E. Dayton, '77

- W. E. H. Boyd, '81
W. H. Byrd, '81
E. V. Buckley, '81
Allen Bonebrake, '83
Hannibal Blair, '83
Charles E. Beebe, '83
L. Foley, '70
J. Ford, '71
M. Flynn, '72
Peter H. Fitzgerald, '86
George H. Fleet, '81
Wm. H. Flanagan, '84
Robert L. Gillespie, '86
Henry S. Goddard, '88
Melinda Goldson, '84
M. Giesy, '68
W. C. Gray, '68
W. P. Grubbe, '72
J. W. Givens, '75
A. J. Giesy, '76
W. W. Giesy, '81
E. E. Goucher, '82
John M. Geary, '83
James Graham, '83
C. H. Hall, '68
L. Victoria Hampton, '89
Laura A. Harris, '90
A. C. Helm, '69
Mary A. Hewitt, '90
J. L. Hill, '71
Charles E. Hill, '90
Harry Green Hill, '89
James W. Howard, '73
Jos S. Herndon, '74
B. F. Holsclaw, '75
G. J. Hill, '77
Reese Holmes, '77
Wm. H. Davis, 83
D. M. Eddy, '81
T. V. B. Embree, '82
S. J. Estes, '82
Ernest Everest, '85
George Fanning, '91
J. F. Irvine, '77
Elijah L. Irvine, '83
W. J. Farley, '78
D. M. Jones, '67
S. R. Jessup, '68
W. D. Jeffries, '87
Cecil Carrie Kellam, '89
J. H. Kennedy, '71
J. M. Kitchen, '77
G. B. Kuykendall, '77
Lewis A. Kent, '80
D. Locke, '70
Harry Lane, '76
N. L. Lee, '71
Emma M. Linden, '89
Robert Lyall, '82
John Laughary, '85
Henry J. Macdonald, '86
W. F. Morrison, '77
Mrs. J. A. (Johnston) McNary, '78
W. F. McCauley, '78
T. J. McCormac, '82
C. B. Martin, '84
J. C. McCauley, '84
J. L. Martin, '67
S. D. McCauley, '69
F. S. Matteson, '73
Abram P. Miller, '74
Thomas Mann, '76
Sarah S. Marquam, '90
John Morgan, '77

- J. F. Hendrix, '79
Curtis Holcomb, '87
J. D. Hoyt, '79
W. A. Howell, '80
J. W. Hill, '81
John Harris, '84
T. C. Humphrey, '89
Martha B. Palmer, '86
William H. H. Palmer, '89
Robert J. Pilkington, '90
I. N. Power, '77
Mrs. J. L. Parrish, '79
William Henry Parrish, '89
Mathew J. Patton, '88
F. F. Powell, '80
W. F. Pruden, '81
Wm. E. Poole, '84
Ernest Pring, '84
D. T. Riddle, '90
W. H. Roberts, '68
C. Rafferty, '69
L. L. Rowland, '72
Mrs. E. A. J. (Ford) Robinson, '77
F. B. Rinearson, '78
J. W. Robinson, '78
David Raffety, '81
D. H. Rand, '85
F. M. Robinson, '85
L. A. Smith, '68
W. H. Saylor, '69
Bell J. Schmeer, '86
John J. Sellwood, '87
L. L. Shipley, '70
E. A. Sommer, '90
S. C. Stone, '75
J. R. Smith, '78
Willis B. Morse, '91
A. I. Nicklin, '72
John Nicklin, '73
T. J. Newland, '84
G. W. Odell, '72
W. G. Oglesby, '71
R. M. Osborne, '79
Gustavus H. Smith, '86
W. Tyler Smith, '81
Ellen J. Smith, '83
W. M. Smith, '69
C. M. Sawtelle, '73
I. W. Starr, '77
J. N. Smith, '81
J. S. Smith, '88
John S. Scott, '83
C. W. Tower, '70
J. W. Turner, '72
Jay Tuttle '80
G. A. Whitney, '72
Mrs. A. L. (Ford) Warren, '77
H. O. Williams, '79
J. W. Weatherford, '90
Ed. J. Watkins, '82
James Whetham, '82
J. C. Whiteaker, '82
Marie Ella Whipple, '83
Wm. B. Watkins, '84
Ossian T. West, '89
John F. Wetzell, '89
May H. Whitney, '85
Frank S. Wright, '87
W. T. Wythe, '68
Mary F. Vanderpool, '82
E. L. Yeargain, '79
Orville W. Yeargain, '91.

Graduates in Pharmacy.

George Breck, '89

W. G. Cole, '91

R. S. Collis, '91

Edwin Ross, '90

E. C. Robbins

Miss Lena Knickerbocker, 91.

