



Jean Carrieco, Ray Loter and John Christensen offer ideas to Ray Yocom as they gather to plan the variety show which will climax the school chest drive November 13. Yocom and Loter will emcee the production, Miss Carrieco is handling publicity, and Christensen is general chairman for this campaign.

School Chest Begins Monday; Willamette Goal Set at \$1800

By Ellen Montague
Collegian Campus Editor

The school chest drive will be set in motion Monday when each student will be asked to donate one dollar towards the goal of \$1800. The drive, the first of its kind on campus, will be the only money raising campaign of the year and the funds derived from it will be divided among the World Student Service Fund, YMCA, YWCA, Salem Community Chest, March of Dimes, cancer and miscellaneous drives.

Solicitors, under the direction of Pat Holtz, will contact students in the living groups and in the halls beginning Monday. Pledge cards will be available for students who would like to contribute but are unable to do so at the time.

Monday morning a thermometer will be placed on the front of Waller hall by courtesy of the Martin Sign company. This thermometer will indicate the progress of the drive throughout the week.

The tentative program for allocating funds from the drive is as follows: 50 per cent, World Student Service Fund; 10 per cent, Salem Community Chest; 10 per cent, YWCA; 10 per cent, YMCA; 5 per cent, March of Dimes and cancer drives; and the remaining 10 per cent will be used to cover expenses of the drive and for other charity groups as the committee sees fit.

WSSF is receiving the largest portion of the funds because this group receives no help other than that donated by students. Funds for WSSF will go for medical aid, books and equipment for student centers and laboratories, food, and various other necessities for needy students in Europe, China and Asia.

Variety Show Coming

Besides individual contributions, a variety show will be presented a week from tomorrow night at the Salem high school auditorium under the direction of Ray Loter and Ray Yocom. (See story and picture on "Varsity Varieties" on page 8.)

John Christensen, chairman of the School Chest committee, urges students to cooperate in every way with the drive. Jean Carrieco is in charge of publicity for the drive.

An Editorial

They Had to Show Him!

They laughed when he sat down at the piano; his piano didn't have 48 keys.

It didn't quite, either, but he still had enough left to play a very enticing rendition of the Missouri Waltz and literally dance away with the country's electoral and popular vote.

The little man with the thick glasses and the apologetic radio voice had to show them that he was from Missouri. And he did.

He bucked a republican-packed congress, told them what he thought of them, and walked away with a democratic congress under his hat, a feat which the historians will laud for many years.

And the poor dopesters, the pollsters and the bettors! Their excuses must be filling another set of archives in the Library of Congress. Harry Truman, the little man who had 15 to 1 odds against him last Tuesday morning became the greatest surprise winner of the presidency of the U.S. in history. Not since the Literary Digest went broke in 1936 had there been such wrong guessing on the part of the odds-men.

Harry S. Truman, the little haberdasher from Independence, Missouri, had become president under his own right, a people's candidate, elected against great odds and with congressional backing to boot.

Those who said, "Give 'em hell, Harry!", saw him do literally that. We congratulate the president-elect of the United States.

Smith Reveals Appointment Of New Dean

C. A. Paeth, Jr. has been appointed Dean of Admissions for Willamette university, according to an announcement by the President's office. He will fill the position which was vacated by the resignation of Walter Erickson in August.

Paeth took his college work at Washington State college where he majored in psychology. He holds a master of arts degree and a master of science. Following his overseas service with the army, Paeth took the necessary training to become a personnel consultant in classification and was assigned to the Santa Barbara redistribution and rehabilitation center where he acted as counselor for reassignment of returnees.

Following the war Paeth returned to Washington State where he completed the work on his M.S. degree, and was then appointed as personnel psychologist with the Fred Meyer company, where he conducted a study on employee selection and the use of tests in employment.

He Showed 'Em



Harry S. Truman, elected to succeed himself as president of the U. S. in national elections this week. He takes with him a democratic controlled house and senate. (See Editorial this page). (Statesman Cut)

Plans Viewed For New Look At Chresto

Dean of Women Regina Ewalt announced this week that plans are underway for the redecoration of Chresto cottage. Decorators will take into consideration the requirements of the various organizations which use the cottage for meetings and get-togethers.

Under Dean Ewalt's recommendation, the student council this week named Dale Cleaver, Barbara Bates, Diane Proctor, Tom Edwards, and Lloyd Hanson as a committee to work with Dean Ewalt on redecoration plans.

Business Manager Robert Fenix has indicated to the student council that financial arrangements may be made for the decoration as soon as suitable plans are submitted to the business office.

Rotarian Appointed

John Christensen, Chest drive chairman, was appointed this week as Rotarian-of-the-Month for November. He succeeds the October Rotarian, Russell Tripp.

Willamette Collegian

Vol. LX Salem, Oregon, Friday, November 5, 1948 No. 8

'Whip Whitman' Set Wednesday

Jim Purdy, chairman of the Whip Whitman banquet, reports that plans are now complete for the event, which will be held Wednesday at 6:30 pm in the Salem high school cafeteria.

On a basis of interclass competition, rather than the former competition among living organizations, yells will be judged by the following rules:

Percentages Given

No member or former member of the Willamette yell squad may lead any yells for classes. One-fourth of the judging will be on originality and effectiveness of the yell, 25 per cent on presentation of the yell, 25 per cent on spirit throughout the evening and 25 per cent on originality throughout the evening which contributes to spirit.

"Only spirit which is directed toward Willamette university will be considered favorably," Purdy warned.

WU Is Host This Weekend

The Oregon Music Educators conference, which meets annually on the Willamette campus, will convene here today and tomorrow for their 1948 convention. Music superintendents from high, junior high and grade schools of Oregon will be on hand for the sessions. There will also be representatives of Oregon colleges and universities in attendance.

The actual proceedings will commence this evening in the studio of Prof. T. S. Roberts, 505 North Summer street, with an artists' concert by members of college faculties scheduled for 8:15. The performers will be E. N. Adams of Pacific, violin soloist; J. Brye of Oregon State, pianist; F. Vanderwicken of U. of Oregon, soprano; and Elwood Ball of Willamette, organist. Following the concert, a reception will be held in Lausanne hall.

Tomorrow, Maurice Brennan will lead the University band in a short concert in Waller hall. Following this will be the general session. Brennan will be in charge of a special meeting of college and student members of the association.

Class meetings will be held for final planning of yells and spirit Tuesday at 4 pm. Freshmen will meet in Waller chapel, sophomores in Waller 302, juniors in the music hall and seniors in Chresto cottage.

Honored at the banquet will be the football team and coaches who will meet the Whitman Missionaries November 13 at Walla Walla. "All organization is directed toward effectively showing the team we are behind them," explained Purdy. Bob Robins will head the program committee, while the Pep Cats will handle decorations and serving.

Tickets, according to arrangements made by David Poindexter, went on sale yesterday in the student body office and Eaton hall. Town students will pay 75 cents, while campus students may purchase theirs for 20 cents in the living organizations or cafeteria at Lausanne. Sales will be limited to 450.

Aids Outlined For Advisors, Says Withey

New counseling aids for lower division faculty advisors were outlined this week in an information bulletin from the office of Dean Raymond Withey.

Of special interest to veterans is the advisement service of the Veterans Administration located on the Oregon State college campus in Corvallis. The service, which is free to all veterans, includes a battery of tests extending over two days which cover a wide range of aptitudes. Aside from Public Law 16 students (disabled vets), the test results have no relationship to a student's standing at Willamette or with the VA. The tests include academic aptitude, vocational interest, mental maturity, general educational development and certain achievement and performance tests. Interested veterans may arrange appointments through Miss Goffrier, secretary to Withey.

Tests Offered

For non-veterans, Willamette offers a limited number of tests in personality inventories, reading, vocational interest and general intelligence. Miss Helen Olson is in charge of administering the tests. Appointments may be made in Withey's office.

Whip Chairman



James Purdy, Whip-Whitman chairman, who plans a sellout attendance at the Whip-Whitman banquet next Wednesday evening at the Salem High School cafeteria.

WU Radio Players Offer Shakespeare

"Romeo and Juliet" an adaptation by Carl Ritchie of Shakespeare's tragedy, will be presented on KOCO at 10 Monday evening by the University Workshop.

Some characters have been eliminated for the 30-minute show. "And These are the Words", but a narrator will tie together the main current of Romeo and Juliet's story.

Willamette
vs
Linfield
Tonight, 8 p.m.,
Sweetland

Willamette Collegian

"In Age there is Wisdom"

Official Publication of the Associated Students of Willamette University
An All-American Rated Collegiate Newspaper

Entered at the Postoffice at Salem, Oregon, for transmission through the mails as second class matter. Published weekly except during examination and vacation periods. Subscription rate: one dollar per semester.
Represented for national advertising by NATIONAL ADVERTISING SERVICE, INC., college publishers' representatives, 420 Madison Ave., New York—Chicago—Boston—Los Angeles—San Francisco—Portland—Seattle.
Editorial and Business Offices
Ground Floor, Waller Hall Phone 3-3688

EDITORIAL STAFF

Editor ERIC BERGMAN
News Editor EILEEN SCOTT
Sports Editor JIM OAKES
Society Editor DONA ADAMS
Campus Editor ELLEN MONTAGUE
Feature Editor NORMAN STONE
Copy Editor STAN HAWK
Rewrite Editor EARL VAN LYDEGRAF
Staff Photographer DAVE SCOTT

BUSINESS STAFF

Publications Manager MARILEE OLSON
Advertising Manager JACK BROWN
Circulation Manager JAMES MILLER
Staff Reporters:

Earlyne Foley, Connie Bailey, John Connet, Dolores Banz, Robert Christensen, Claribelle Easton, Bob Hearn, Barbara Garrett, Mary Lou Herndon, Mary Howe, Pat Jones, Mary Louise Lee, Al Landendorff, Pat Morgan, Glenda McAllister, Patrick Paddock, Barbara Redenbaugh, Ron Symons, Bev Tribble, Myrtle Walker, John Weisser, Phil Gallo, Mickey Newell, Ken Nerison, Dale Reynolds, Bill Bonnington, Dave Card, Lowell Maudlin, John Williams, Joyce Kelly and Jerry Jewett.

Let's Expand Our Chest

The school chest drive of next week is a worthy cause. The drive will not only enable the school to help worthy organizations but will give the student a chance to get all drives off his chest in one donation. The donation that will be asked of each student is one dollar. This dollar may be given as the student sees fit to one organization or several. If the student does not designate a certain organization it will be pro-rated to the World Student Service Fund, 50 per cent; city community chest, 10 per cent; YMCA, 10 per cent; YWCA, 10 per cent; the cancer fund, 5 per cent and the March of Dimes, 5 per cent. The other five per cent will be placed in a sinking fund to be used for taking care of other organizations and expenses. Your donation of \$1 will help fill the quota set by the chest committee and will enable you to become a "dollar-a-year" man.

Let's expand our school chest and give once and for all!

Bored With Bulletins

Several complaints have been received lately by both the student council and the *Collegian* concerning the cluttered condition of the bulletin boards in Eaton lobby. Deena Hart, veteran's secretary, has suggested that a separate bulletin board be obtained and maintained for the veterans. She believes that many notices that are of importance to veterans are buried under the deluge of matter which finds its way to the Eaton boards. Bill Harris, first vice-president and social chairman has complained that social notices, too, are buried on Eaton bulletin boards. He has proposed to the student council that a glass-covered board be purchased so that bulletins may be locked in and not covered by used car and tire notices. The *Collegian* is in sympathy with this worthy cause and suggests that the business office make arrangements for purchase of appropriate bulletin boards both for the social chairman and the veterans' secretary.

Whip-Whitman for Victory

The time for the Whip-Whitman banquet is upon us—that is, it will be held Wednesday evening at the Salem high school cafeteria, Jim Purdy, chairman, announces. The Whitman game will be held Saturday night, November 13, at Walla Walla. An innovation at the banquet this year will be class competition in presenting original school yells at the banquet. Formerly the competition had been between organizations. It is up to the classes to organize for this event and put enough spirit behind it to give Willamette victory at the game.

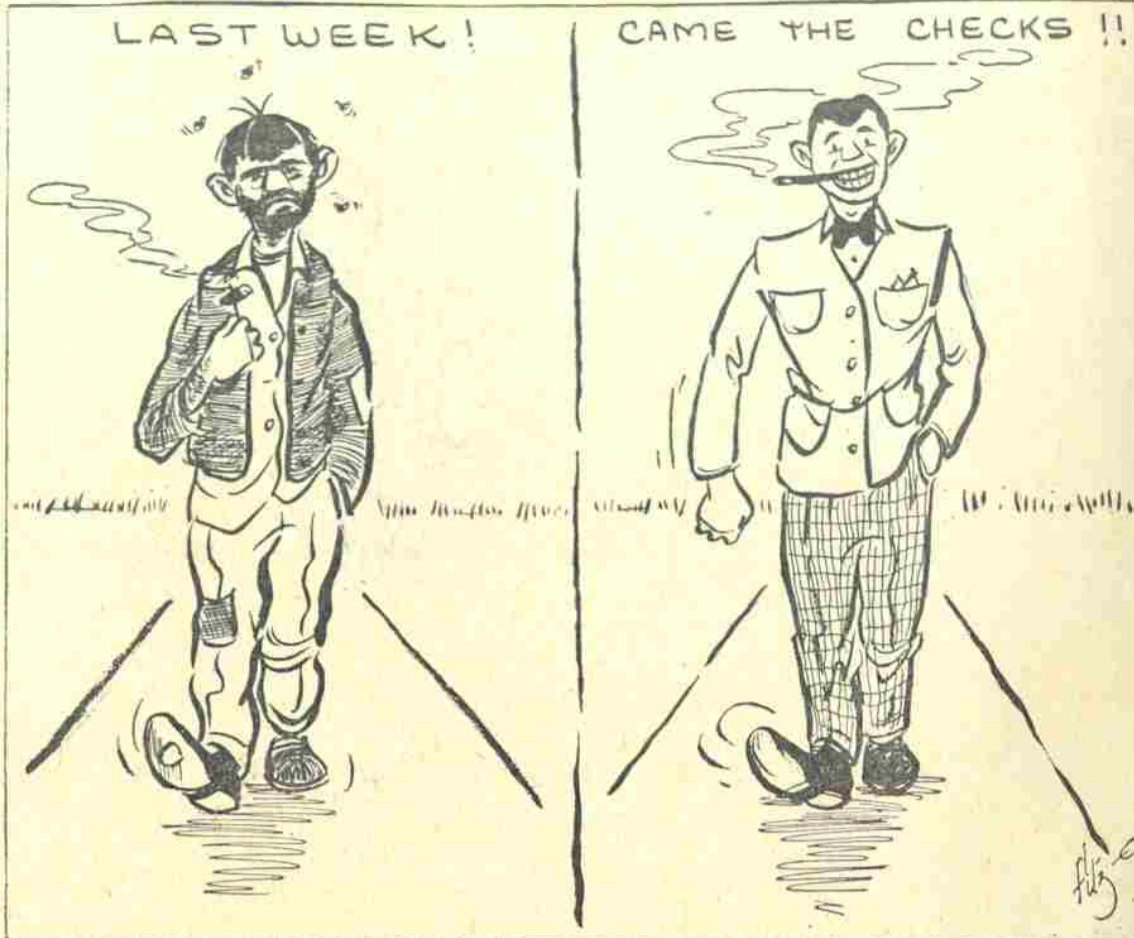
The Absence of Playgoers

Attendance at Friday and Saturday night performances of "The Mollusc" were very disappointing, report the drama students. Only about 250 playgoers were present for the two-nights' performances. Excuses were prevalent that the game in Portland Friday night prevented a large attendance at the play. But this does not excuse the lack of attendance on Saturday night. The hard work and excellence of production by the drama department warrant better support by the student body. We hope the next performance will see wholehearted attendance by everyone.

Compensation for Sitters

Bill Harris, social chairman of ASWU and first vice-president, was perplexed at this week's student council meeting. He submitted a bill for the payment of baby sitters who sat during last Saturday's Homecoming dance for parents who had been invited to the

dance by the student body. The student council left it to Bill's discretion to pay the sitters at prevailing rates and to continue the baby sitting for events sponsored by ASWU in the future. Harris said he believed he'd be better off taking a baby-sitting job at the next event.



On the SOUTHard Side

By Wally Southard
Having given way to the political candidates and their promises, prognostications, denunciations, and what have you for the past few weeks, the Lone Ranger has once again taken his rightful place in radio, and the campaign buttons will probably find their way—via the shortest possible route—to the city dump. But I have been thinking that it is wrong to allow such a useful little object as a campaign button to come to such an ignoble end. There are so many uses for the button; I should like to relate a few here. Married people—especially student veterans—who can't afford to buy safety pins, could pin up Junior's diapers with the pin from a button. Moreover, the pin could be used to fasten pin-up pictures, calendars, and like items to the wall. Another good use of the button could be made by a student whose aspiration is to college political office and whose name is the same as that of a political candidate. The student could gather up a few of the politician's buttons, and distribute them to his followers, thus saving himself a little money and getting free publicity at the same time.



Magic Proves Frustrating To College Intellectuals

Have you ever lost faith in your senses of perception? Have you ever felt that maybe you aren't as smart as you think you are? If not, arrange to have Prof. Murco Ringnald show you some of his tricks sometime. The professor, ably assisted by Mrs. Ringnald and their children, Bill and Karen, offered an array of magical feats to his fireside audience last Sunday that were truly in the spirit of the Hallowe'en season. Disappearing milk, sudden materializing of coffee and numerous intricate card tricks stymied the thirty odd students that attended the function. To add to the occult atmosphere, "Cinders," the feline member of the household, who happens to be very black, frolicked gleefully around the room and seemed to enjoy the occasion along with the guests. The pay-off came when the professor announced that he would present a mummy to

the group that could answer any and all questions that were asked. Taking the part of the "mummy" was Mrs. Ringnald, who, after being wrapped in a sheet and securely bound with a rope, stood in full view of all present. In the meantime the professor proceeded to cut another piece of rope into thirds, knot it together and after some magical manipulation, show it to the audience as an uncut, unknotted cord. Whether the rope trick was meant to be a distraction or not we don't know, but anyway, the end result was that when the "mummy" was unwrapped it wasn't Mrs. Ringnald at all but instead, it was young Bill Ringnald. As a finale, the professor amazed everyone with a dozen or so Chinese rings which he handled with the skill of a professional.

Red Faces, Alibis and Second Guesses

The tumult and the shouting dies, the captains and kings depart and the last thing seen of the chairman of the Willamette young republicans was when he was seen buying a ticket from the S. P. ticket agent. Ultimate destination: the outer reaches of Mongolia. Many and varied were the opinions expressed concerning the election results. Some were dynamic, some exuberant, some resigned and some baffled. Possibly the most laconic expression was "THE PEOPLE SPOKE." Others, however, did not spare the words, but made it certain that more than just the election of a president had been at stake. No one seemed to think that Truman's election was the forerunner of a new deal. Reasons for this seemed to follow that Truman is not the man to weld such an organization out of the party as it now exists. One idea advanced was that if it had not been for the democratic election,

there would have been no more democratic party next time. This did not seem to hold true for the outcome in the state of Oregon. The opinion was expressed that the overwhelming republican election in Oregon would help bring the democratic party out of a rut and would make for some definite changes in the future. In one quarter was heard the opinion that in spite of their national victory the democratic party is not the party of the common man as they would have people think. However, this source seemed to think that the democrats were more inclined that way than the republicans. From the republican viewpoint this is either a blow to the national republican party which will do it considerable damage, or it might well be the means of snapping the republicans out of their lethargy. It was definitely a pretty good demonstration that the game isn't over until the last card is played.

The causes of the upset in the election seemed to center around the idea that the pre-election polls had a great deal to do with it. Many thought that since the polls were strong for the republicans the democrats got hot, and because of this many democrats voted who wouldn't have ordinarily. One person interviewed had an undercover organization in the labor class working for Truman. Generally accepted as fact was the notion that the labor organizations turned against the 80th congress. And the opinion is that the laboring class wasn't alone in turning against said congress. As far as figures go, 56 per cent of those interviewed looked on the election results as favorable. Forty per cent were sour and 4 per cent didn't care much either way. Eight out of 10 thought that the results of the election were definitely an upset. Judging from that, the other two were pretty good democrats.

NSA Rejected After Council Hears Report

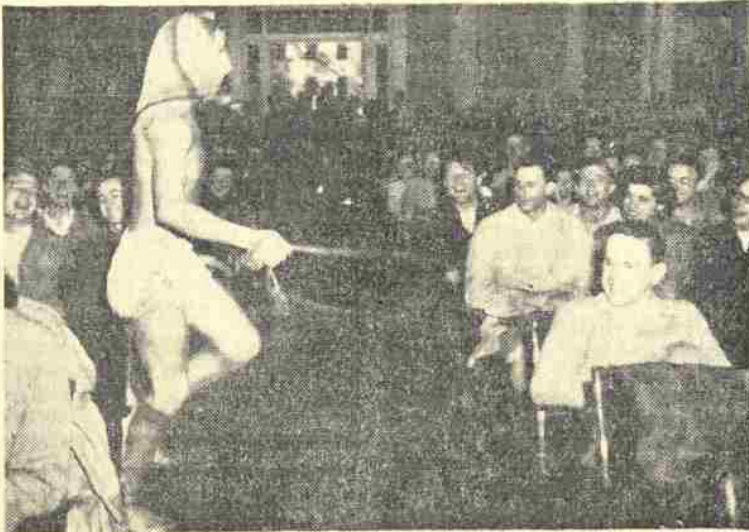
Membership to the National Students Association, was disapproved this week by the student council after a report on the organization by Will Henderson and Virginia Atkinson who attended a recent meeting of the association in Portland.

The organization is interested in student government, foreign work, exchange students, camp work, a purchase ticket plan, and a connection with touring artists who appear for the benefit of affiliated colleges.

The council did not feel that the school would benefit enough from membership in NSA at this time. Membership would be approximately \$65 for the school, plus an additional fee for delegates to conventions. Thus far, only Lewis and Clark college and Reed college in Portland are affiliated with the organization in Oregon.

At the same time Russell Tripp, junior class representative and Eric Bergman, Collegian editor, were appointed as delegates to the Oregon Federation of College Leaders convention at La Grande next week.

'W' Club Punishes Frosh Misdemeanors



Don Olson, one of the many frosh who frequently forgot to wear rook caps, wore cords, and were generally disrespectful to their elders, skips rope down the aisles throughout the session of Kangaroo Kourt.

Critic Praises 'Mollusc' Cast But Deplores Empty House

By Mary Louise Lee

The curtains opened last Friday and Saturday nights on 'The Mollusc', Henry Davies' delightful comedy. Those who attended, enjoyed a pleasant evening, for both cast and director worked hard, and produced a good show.

Prof. Edward T. Gibson has shown a great deal of know-how in directing such a difficult play. The players were at a disadvantage in playing to an almost empty house, for there is enough vanity in every actor to want to be appreciated after he has taken the time and trouble to interpret a character. Due to an upstage alcove causing a well of sound it was difficult to hear every word.

Shirley Dean Worked

Shirley Dean as Miss Roberts worked hard to develop her character and she achieved her aim. Kathleen Scott as the Mollusc seemed natural and entered into the spirit of being a complete mollusc. Carl Ritchie added an original touch to the character of Tom which was very refreshing. John Brown achieved the gentleness and kind character of the adoring husband, Mr. Baxter.

The set, by Ritchie, was appropriate and well-done and the combination of rose, green and yellow was effective.

The drama department will continue to turn out fine plays, the publicity of which shall announce the when, where, and who. With a complete network striving to insure your entertainment, all that is needed is a crowd on production night.

Deadline Named For Frosh Choice Of Glee Manager

Dates concerning two major campus events were set this week by the student council at its meeting at the Gold Arrow restaurant.

The council ruled that elections for Freshman Glee officers by the freshman class must be held prior to November 30.

May Weekend will be held on the campus on April 29 and 30 and May 1 following a further ruling by the council.

Compliments of the Capitol Restaurant

Rooms 9 and 10
State Capitol Building

Double and Triple Soles At Their Best

Dye, Shine and Plates
Men's Shoes

Jim's Shoe Service

175 N. High

Tradition-Breaking Freshmen Penalized in Kangaroo Kourt

By Bill MacDougall

Skipping rope clad only in a bandanna and diapers and making passionate love in public were among the punishments pronounced Tuesday upon custom-breaking members of the class of '52 for such unpardonable crimes as being born and "marijuana smoking."

Dean Ray Withey opened the courtroom proceedings by admittedly making himself the enemy of a third of the student body with the announcement that further outbreaks by the lively freshman class would revoke their privileges, and result in the "release" of violators from the campus.

His Honor Ray Loter, judge, ably assisted by a black-robed and cigar-smoking jury, composed of Jim Johnson, Roy Harrington, and Bill Patterson, was consistent in his "guilty" verdicts, given first to Ted Loder for spelling his name wrong, and to "Babe" Maudlin for winning the president's post. Each was awarded the honor of holding his head in a box while the proceedings took place.

Raw Eggs Used

"Marijuana-smoking" Pat Rice showed her ability as a hair dresser to Maury Underwood, who was treated to an egg shampoo, complete with raw eggs and cracker crumbs. Unsuspecting Dan Montag and Phil Gallo were sentenced to a boxing match. However, Dan alone was actually blindfolded, and fought gropingly while three upper classmen pounded him from all sides.

For wearing no rook cap, being seen in cords, and general disrespect to his elders, daring Don Olson was forced to reappear in court dressed lightly in three-cornered pants.

John Indifferent

John Markoskie "for being cold and indifferent to the opposite sex," played the part of the mad lover to Sheila Ryan, who nevertheless held the starring role in the little drama.

The most painful penalty was pronounced upon Bob Warner and Vince Aliska, whose posters were adorned by patches from the artful, blindfolded sewing of Shirley Hanson and Margaret Sargent. The jury was rewarded for their efforts by kisses from the winning seamstress, Margaret Sargent.

Seated in a small tub, Don Hosford was cleansed of his freshman sins by a refreshing shower from the watering can of Mary Lee, accompanied by the surviving members of the class singing "I Love Willamette U."

Veterans' Tips

The U. S. Civil Service Commission has announced an examination for Student Dietitian which is of special interest to graduate student veterans. Appointments will be made to courses in Veterans Administration hospitals in Los Angeles, California; the Bronx, New York City, New York; Hines, Illinois; and Memphis, Tennessee.

The salary for student dietitians is \$1,470 a year, including subsistence, quarters, and overtime. The courses will last for 12 months. To qualify, competitors must have received a bachelor's degree from an accredited college or university. Their study must have included courses in chemistry, biology, foods, institution management, nutrition and diet in disease, social sciences, and education. Applications will be accepted from persons who have not completed the required education but their study must be completed not later than the beginning date of the course for which they are applying.

Interested persons may obtain information about the examination, as well as application forms, from post offices, from Civil Service regional offices, and from the U. S. Civil Service Commission, Washington 25, D. C. Applications will be accepted until further notice by the executive secretary, Board of U. S. Civil Service Examiners, in the Veterans Administration hospitals in the above-mentioned cities.

OFCL Delegates to La Grande



Russell Tripp, Albany, junior class representative, (left) and Eric Bergman, Salem, Collegian editor, (right), who were this week appointed delegates by the student council to attend the convention of the Oregon Federation of College Leaders at La Grande next week. Tripp and Bergman will make the trip by automobile and attend the Whitman game at Walla Walla on the way back.

Chapel Notice

Pres. G. Herbert Smith will speak on "High Roads to Scholarship" at the freshman chapel Tuesday in Waller hall.

An Armistice day convocation will be held Thursday at the First Methodist church with Dr. Charles Durden, pastor of the Calvary Baptist church in Salem, as the speaker.

For Unexcelled Quality in Jewelry... Visit
POMEROY & KEENE
379 State

Stylish Clothes for the Smart Set
The Fashionette

New Bleachers Ordered for Gym

"New folding bleachers, which will seat about 1000 more students, will be placed in the gym by the end of December," stated Business Manager Robert Fenix this week.

The order has been placed for these light, Douglas fir bleachers which will be in both ends and one side of the gym. Since they can be pulled out or pushed back in a matter of minutes, they will enable the school to have quick rallies and meetings as well as larger turnouts at games. They will also be used for weekly convocations, Fenix said.

Student Recital Scheduled Today

The first student music recital for the year will be given in the Waller hall auditorium this afternoon at 3 o'clock with seven students performing. This begins the series which will be presented every two weeks.

For That After Class Snack Come to

THE ACE

Almond Roca Candy Fountain Service and Magazines
127 North High Phone 3-4044

SURPLUS Portable Microscopes

We offer a limited quantity of surplus portable microscopes for sale. These are all new, in original cartons and are offered at a fraction of original cost.

Specifications: Overall height 8 inches, turret with three different powers. Will accept auxiliary eye-piece for higher powers desired. Fully adjustable on tiltback base. Optical system: pitch-polished lenses.

These portable microscopes are offered subject to prior sale on the following terms: Price \$9.00, includes shipping and packing charges. Check or money order should be sent with your order or \$2.50 deposit, the microscope to be sent C.O.D. for balance. Any check received after quantity has been sold will be returned promptly.

GIBSON PAGE CO. Inc.

Dealers in War Surplus
BOX 1130, ROCHESTER, 2, N. Y.

Jasons End Home Play Tonight Against Cellar Linfield Eleven

Douglas, Johnsrud to Play Last Game on Sweetland

A battered Bearcat squad will attempt to break a two game losing streak tonight when they collide with the unluck, but highly potent grid squad from Linfield college on Sweetland at 8. Both setbacks came by scant one-point margins the latter to Lewis and Clark being Willamette's first conference loss since 1939.

John Slanchik, the Bearcat ace punter, who is suffering a knee injury and Keith Sperry, left half, who dislocated his shoulder, will be out of action due to the local's rough and tumble Lewis and Clark fray last week. Also out of action is Ray Osuna, another halfback, who will sport a cast on his leg for about a month because of a knee injury suffered in practice two weeks ago.

Linfield Four-time Loser

The Linfield crew, coached by Paul Durham, who maintains the

"T" formation, will be fighting for their initial win after suffering four close losses. They have been beaten by Whitman 18-13, Lewis and Clark 20-19, Pacific 28-14 and College of Idaho 13-0.

The Wildcats will be herded by John Seeley, all conference halfback for two years, who is now at quarterback. He is considered one of the ablest passers in the league and with right end Arn Huntley receiving their air attack, may prove dangerous. For work on the ground, the Durhams feature Whitey Palmquist, a 170-pound hard hitting fullback, and Karl Wickam, a fast, elusive scat-back, who comes from Silverton.

Fray Last at Home

Tonight's contest will be the last home game for Willamette and teammates Bob Douglas and Herb Johnsrud will play their

last collegiate game on the Sweetland turf. Both are expected to see action, although they have been out a good part of the season due to injuries.

Rivalry between the two schools has been running for 26 years, and during that time, the Bearcats have copped a "Bearcats' share" of the wins. Willamette has recorded 23 wins against one loss and one tie. However, the Wildcats put a scare into the locals last season when they stubbornly went down only 12-7 in a savage affair.

Lineups:

Willamette	Pos.	Linfield
Wenger	LE	Marshall
Kukahiko	LT	Schroeder
Hall	LG	Klang
Patterson	C	Kras
Beddoe	RG	Saxton
Blacie	RT	Scotfield
Hoar	RE	Huntley
Burleigh	Q	Seeley
Ewaliko	LH	Fleming
Minn	RH	Schibel
Clabaugh	FB	Palmquist

Northwest Conference Standings

	W	L	T	Pct.	PF	PA
Lewis and Clark	3	0	0	1.000	48	45
College of Idaho	3	1	0	.750	87	47
Willamette	2	1	0	.667	61	34
Pacific	2	1	1	.625	75	34
Whitman	1	1	2	.500	44	40
British Columbia	0	3	1	.125	26	107
Linfield	0	4	0	.000	46	79

LAST WEEK'S RESULTS

At Lewis and Clark 14, Willamette 13.
At Whitman 18, Linfield 13.
At UBC 6, College of Idaho 40.

NEXT WEEK'S GAMES

At Willamette, Linfield
At College of Idaho, Whitman
At UBC, Lewis and Clark

Harrington Chalks Up Yardage



Rolling up a few of Willamette's 228 yards gained from scrimmage in last Friday night's 14-13 loss to the Pioneers at Multnomah stadium is diminutive Roy Harrington. An unidentified foe is ready to make the stop with Hahn (76) and Baisch (80) coming up to help. Roy, himself, netted 60 yards from scrimmage. (Photo by Dave Scott, Collegian photographer.)

Returns



Ex-Willamette Bearcat Johnny Oravec, returns to the local gridiron tonight but wears the opponent's colors, that of the Linfield Wildcats. Now assistant to Wildcat Headman Paul Durham, Oravec starred some ten years ago for the locals and was named Little All-American in 1935.

Collegian - Sports

JIM OAKES, Editor

Gridsters Drop NW Lead to Pioneers, 14-13

Three Scoring Attempts Halted As Lillies Lose First Looper Since '39

By Dale Reynolds

Willamette's hopes of bettering a 14-13 Lewis and Clark margin died for the third time when the final gun sounded Friday night at Multnomah stadium. The game results place the Pioneers in sole possession of the Northwest conference lead and marks the Bearcat's first conference loss since 1939.

The Pioneer squad followed their two touchdowns with con-

versions by Chuck Allen. The Jasons not only failed to convert after the last of their two scores but were denied a TD on three occasions.

Lillie's Denied Three Times

They were denied scores twice when the Pioneers intercepted passes and ran them out of the end zone and once when the pigskin was lost on a fumble only three yards short of the paydirt.

On the first play of the second quarter Bobby Douglas, punting for John Slanchik who was hurt in the opening period, punted to the 50. Thirteen plays later the Lewis and Clark crew sent Hal Ellmers, 148-pound lightning back, ovtr his own left tackle for three yards and the tally. Allen's skilled toe split the uprights and pushed the Pioneers ahead 7-0.

Sperry Sparks TD Drive

With two minutes remaining the Bearcat's Keith Sperry start-

ed a 65-yard TD drive by skirting 20 yards around his own right end. A five-yard penalty and Roy Harrington's 12-yard run placed the pill on the 35-yard marker with 45 seconds remaining.

Sperry was again the spark when he caught a Bob Burleigh pass on the 4. With only 4 seconds remaining in the first half, Burleigh completed a basketball pass to Bob White in the end zone. Al Minns converted to make the scoreboard read 7 to 7 at halftime.

Ellmers, Allen Repeat Act

After Dick Nemyre booted a coffin-corner kick that went out of bounds on the two, Douglas punted the ball out to the Bearcat 38. The Pioneers toted the mail to the golden territory in 10 plays, and with three minutes remaining in the third frame, Ellmers and Allen made repeats of their previous scoring.

A 15-yard penalty against the Pioneers put them on their own one. From the one Nemyre punted to the 30. Although the Bearcats were hindered by a 5-yard penalty, Keith Clabaugh was able to drive over from the one only seven plays after the Jasons had gained the ball. Minn's kick could have tied the ballgame, but, although high enough, the ball kick was a couple of feet wide.

	WC	L&C
Yards gained, rushing	228	212
Yards lost, rushing	15	3
Yards gained, passes	86	2
Passes attempted	13	4
Passes completed	8	1
Passes had intercepted	3	0
First downs	16	13
No. of punts	5	7
Ave. length of punts	26	30
Fumbles	1	0
Ball lost, fumbles	1	0
Yards lost, penalties	10	27
Willamette	0 7 0 6-13	
Lewis and Clark	0 7 7 0-14	

Willamette scoring: Touchdowns, White, Clabaugh. Point after touchdown, Minn (placement).

Lewis & Clark scoring: Touchdowns, Ellmer 2. Points after touchdown, Allen 2 (placement).

D'Eagles Try Pioneer Jayvees Following 19-0 Portland Loss

Hitting the road to Portland again, Coach Ambrose D'Eagle's Jayvee eleven will tangle with the Lewis and Clark junior varsity today at 2:30 in Portland.

Last Thursday's Portland journey found the Bearkittens blanked 19 to 0 by a bigger Portland university freshman team in a muddy dual on the Portland turf.

After the initial kickoff the

game see-sawed back and forth until an exchange of kicks found the Portland Babes knocking on the Willamette 18 yard line. A first down moved the ball closer, and Willie Kang, ex-all-city back from Poly high in San Francisco, slashed through center from the four-yard line for Portland's first score.

A 12 yard pass in the second quarter, from Babe quarterback George to end Fred Bowen, gave the hosts a two touchdown half-time advantage.

Jerry Lillie's future hopes were in command of things the second half after Dick Talieferro passed into the hands of speedy halfback Bob Taylor for thirty yards. With this as an incentive the Bearcat hopefuls drove to the enemy three-yard line but lost the ball on downs.

An intercepted flank pass on the Willamette 32 by Joe Giordano gave the Portland team their final score midway through the fourth quarter. The placement by Charles Disputo made the final margin of 19-0 in favor of the Portland Frosh.

Score by periods:

Willamette	0	0	0	0-0
Portland	6	6	0	7-19

SUNDIN & SEIME

Custom Tailors to Men and Women

Alterations and Repairs

196 So. Liberty St. Salem, Oregon



Stop Lite Coffee Shop

- Our Special -

Golden Fried Chicken 95c

Dinner, Anytime

Delicious Tenderloin \$1.20

Steak

OPEN 6 A.M. to 1 A.M.

Sat. & Sun. 6 a.m. to 3:30 a.m. South of 12th St. Junction on 99-E

PEBBLY SCOTCH GRAIN LEATHER!



RUGGED.. but easy-walking

THE RAND SHOE FREEMATIC



This is the shoe for extra wear and all-over flexible comfort that insures miles of happy walking.

A man's style! A man's color! ...correct for wear right now. All the exclusive Rand "Freematic" features to give you buoyant support, perfect fit and cushion ease.

10.95

Roberts Bros. SALEM, OREGON

BEARCAT STATISTICS

SCORING						RUSHING					
Player	TD	FG	Saf	Pat	TP	Player	TC	YG	YL	NY	Ave.
Ewaliko, lh	5	0	0	0	30	Slanchik, lh	3	25	0	25	8.33
Minn, rh	1	1	0	11	20	Osuna, lh	6	38	2	36	6.00
Harrington, rh	3	0	0	0	18	Clabaugh, fb	57	332	7	325	5.70
Burleigh, qb	3	0	0	0	18	Warren, fb	17	86	1	85	5.00
Clabaugh, fb	2	0	0	0	12	Ranis, fb	27	133	8	125	4.63
Noa, qb	1	0	0	0	6	Minn, rh	29	132	2	130	4.48
Sperry, lh	1	0	0	0	6	Ewaliko, lh	50	241	18	223	4.46
Warren, fb	1	0	0	0	6	Nee, qb	2	8	0	8	4.00
White, re	1	0	0	0	6	Sperry, lh	17	82	16	66	3.88
Bowe, lg	0	0	1	0	2	Noa, qb	8	32	3	29	3.63
						Harrington, rh	53	196	28	168	3.17
						Lorenz, lh	17	42	3	38	2.29
						Douglas, qb	7	16	0	16	2.29
						Burleigh, qb	29	94	46	48	1.66

PUNTING			
Player	No.	Total	Ave.
			Punts Yards Length
Slanchik, lh	24	893	37.21
Douglas, qb	29	928	32.00

PASSING					
Player	ATT	COM	YDS	INT	PCT.
Nee, qb	4	2	50	1	.500
Douglas, qb	10	4	62	2	.400
Burleigh, qb	73	28	376	8	.384
Slanchik, lh	3	1	23	0	.333
Noa, qb	4	1	15	0	.250

Harrier Aspirants Called by Lillie

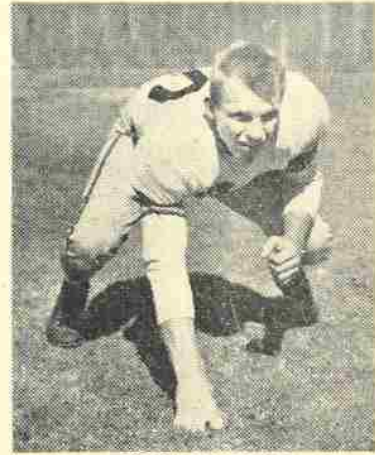
Cross-country aspirants are urged by Coach Jerry Lillie to turn out for the intercollegiate harrier run to be held at University of Portland November 19.

The race will be over a three mile course on the University of Portland campus. The teams will consist of seven men with five men counting toward the teams' total.

There will be no Hill Military meet this year and the meet in Portland will be the Oregon collegiate meet. The Portland race is the only one on the Bearcat schedule.

Sports Orbit
by Oakes

One of the troubles with football is that about the time you get immersed in the season's going-ons, you look at the schedules and find it is nearly over. And so it is with our



BOB WHITE
Breaks into score column.

Willamette Bearcats.

Tonight, they take to Sweet-fifth time of the 1948 season land field for the last and and of course we hope it will be a successful finale. Their opponents, Paul Durham's Linfield Wildcats, though in last place will certainly be primed to grab their first win after losing four other loop games.

Season's record thus far in the first four home games stands at two wins and two losses. Evergreen loop clubs, Puget Sound and Central Washington took a liking to the Cats and chewed out 7-6 and 13-7 wins. Likewise, the Cats clawed Eastern Oregon 41-0 and College of Idaho 27-

13. Tonight's game, therefore, is the rubber contest.

White Breaks Into Scoring Column

Bob White, who plays offensive right end for the Lillies, finally gained himself a little well deserved glory last Friday when he took a short basketball lob from John Burleigh for a first half touchdown against Lewis and Clark.

The husky ex-Benson Tech star played some outstanding ball the past two years for the Jayvees and only this year cracked the varsity. Termed by Coach Lillie as the best pass receiving end on the squad, White should break into his own anytime now and we hope he snags an important one or two tosses tonight.

Lose a couple of ball games and watch the wolves howl. The last two reversals, both by one point, have brought a lot of comments to our ears ranging from "lousy" to "unfortunate" or "heartbreaking."

Fitzsimons Questions Play in Losing Tilt

One of the more constructive comments on the disasters was issued by none other than Rube Chief Ed Fitzsimons, last week. Said he, "It isn't so bad losing a ball game when the other team is definitely a better club, but it gripes me aplenty when boners give it away."

Ed added that the last play in the Pioneer fray last Friday was a boner of the first water and asks: "Why did Quarterback Burleigh fade far back for a pass thus tipping his hand with only two yards to go and the ball in a good position for a field goal try?" Well, that's a good question. Maybe he was trying to catch 'em off guard Ed.

First Hoop Drills Disclose Depth

Head Basketball Coach Johnny Lewis greeted 35 basketball enthusiasts in the first week of casaba drills beginning last Monday and poured it on, two hours a night, for the first four nights.

First cuts will take place today with some of the men scheduled for the freshman squad which will pick up their drills in two or three more weeks. Athletic Director Jerry Lillie will take over the mentorship of the frosh squad once pigskin duties are off his chest.

Team "Deeper"

From all indications the team will be a lot "deeper" this year with several of the men out showing good stuff though none are too outstanding. Height will

also be increased with Doug Logue, a 6'5" tall fir from Astoria, topping all. Chuck Robinson and Bob O'Harra from Gresham and Camas highs respectively hit the 6'4" mark.

Experience is another necessity the locals have a quarter on with the Johnson brothers. Jim and Bob, plus Ted Johnson and Tom Warren, all first stringers, again setting the pace.

Other men showing up well are Ted Loder, 6'3" Milwaukie high whizz; George Matile, West Linn high, Claude Nordhill, Newberg high and Dick Brouwer, Roosevelt high, all able guards; Al Fedje, a 6'2" ex-member of

the 1946 Willamette squad and Lou Scrivens, diminutive ex-Franklin high star.

Another Brother Team

Another brother team may develop if the Bellinger's from Salem high live up to early predictions. Al has sandwiched three years in the service since graduating from Salem and coming to Willamette and Hugh played for Harold Hauk's last year run-nerups to the state champs.

A total of 23 games have been scheduled to date including a home and home series with Oregon State and a single contest here with Oregon. About three more games will be scheduled.

Jim Johnson Leads Seniors To Hoop Title Over Sophs

Looking for new fields to conquer this week are the newly-crowned interclass basketball champs of 1948, the Seniors.

The power-laden cap and gowner squad, almost entirely made up of varsity court artists, romped to a 43-32 victory over a rugged Soph team in last week's championship tilt.

Led by big Jim Johnson, who dropped in an evening's total of 19 points, the upperclassmen held off a determined first half bid by the Sophs to grab an intermission lead of 23 to 20.

Bad Weather Slows Tennis, Touchball

Once again the weather man put his wet and sticky finger on the fall intramural program that has been struggling for a start for the past two weeks.

Both the all-school tennis ladder and the intramural touchball schedule have been thoroughly squelched by the typical Oregon mist, which has also dampened the spirits of the prospective participants.

Latest word on the touchball set-up is that this week's rained out tilts have been re-scheduled for next week at the same time and place announced previously. Laurel hall meets the Dorks Monday noon and the Rubes will tangle with Baxter hall Tuesday. On Wednesday the Sigs engage the Betas, and the Phi Deltis and Phi Alphas the week's finale on Thursday.

Little action has taken place on the tennis courts recently for obvious reasons. Cece Connor moved from fifth spot to third by virtue of straight set wins over Al Miles and Ray McCoy, while Bill Bonnington and Dave Bristow are vying for the top spot.

Bonnington took the first set, 6-1, but Bristow came back from a 1-4 deficit to grab the second, 8-6, necessitating a third and deciding set when the weather permits.

At the other end of the ladder Phil Shaw moved above Dick Briggs, 6-1, 6-3, and Phil Hammond whipped both of them to gain the number twelve spot.

The lowerclassmen jumped to a first quarter margin of 9-6, by virtue of a hot streak by Lou Scrivens, but could not cope with the Johnson brothers once they started hitting the hoop. The Senior squad led their opponents both in the field goal department, where they canned 17 to the Soph's 13, and in the free throw column, leading there 9 to 7.

High scorer Jim Johnson, with 19 counters, was followed by Scrivens and Richardson of the losers, with 13 and 10 points respectively.

SENIORS (43)		SOPHS (32)	
B. Johnson, 7	F 2	Ambrose	2
Baum, 2	F 10	Richardson	2
J. Johnson, 19	C 10	Aasen	2
Warren, 5	G 4	Allison	4
Barker, 8	G 13	Scrivens	13
Senior sub: Laskie (2).			
Soph sub: Endsley (2).			

Mural Bowling League Starts

The fall intramural bowling schedule opened yesterday at the Capitol Alleys with three matches. Next week's schedule finds the defending champion Phi Deltis meeting the Independent A's, Sigma Chi versus the Independent B's, and the Betas tangling with the Phi Alphas. Matches will be played Thursday afternoon starting at 4 p.m. Don Barclay, bowling manager, expects a big year after the interest shown in the alley sport last spring.

Lausanne Clubs Pace Women's Hoop Tourney

Top teams on the women's basketball ladder to date are Lausanne's two teams the Hot Shots and the Lucky Six having remained undefeated, playing three and two games each.

Up to date, playoffs in the basketball tourney include a 18-16 win for the Freddie B team over the Pi Phi house Tuesday, October 27. Maria Puckett, playing for Pi Phi and Jan Gillilan for Freddie, contended for scoring honors with 12 and 10 respectively.

Wednesday, October 28, saw the Lausanne Lucky Six defeat the Alpha Chi Omega house 12-8 with Alice Miller of Lausanne making 10 of the 12 points to come out high-point girl.

The Lausanne Hot Shots took another win over Freddie B Thursday, out-shooting them 20-13. Nan Wilcox putted 16 of the Hot Shots 20 points to rate high-scorer with Merge Stockman scoring next in line for Freddie with 7.

Once again the tournament schedule is being changed and the Pi Phi and Alpha Chi Omega teams will combine to make one. This will leave five contenders for the top rung of the tourney ladder.

When You Think Drugs Think

Schaefer's Drug Store

135 N. Commerical St.

Lord Jeff

CASHMERE

100% Imported Cashmere

\$18.50

ALEX JONES

121 North High Street

SAVE TIME!

RIDE A BIKE

HARRY W. SCOTT

147 S. Commercial

FILMS

DEVELOPING

PRINTING

ENLARGING

On the Campus at Willamette Bookstore

Corsages of Distinction
BREITHAUPT'S
Bearcat Florist for Over 25 Years
447 Court Phone 3-9179
2073 Fairgrounds Road Phone 3-9129

Ramage's

TOP HAT RESTAURANT & ICE CREAM PARLOR

Open 7 A.M. - 11 P.M.
TASTY ICE CREAM—FINE FOOD
1275 State Street—Salem, Oregon



Marjorie Lettiken

Sweetheart Revealed Tomorrow

By Jean Gilmer
A month-long search for the Sweetheart of Sigma Chi on the Willamette campus will end tomorrow when the Sigs reveal their sweetheart at a formal ball given in her honor. The sweetheart chosen from among finalists Margaret Sargent, Kay Stark, Marjorie Lettiken, and Shirley Hansen will share honors with Carolyn Slocum, last year's choice, and winner of second place in the national Sigma Chi Sweetheart contest.

Margaret Sargent is a Delta Gamma pledge from Berkeley, California. The other three girls,

Kay Stark, Marjorie Lettiken, and Shirley Hansen are pledges of Pi Beta Phi. All are freshmen except Kay Stark, who is a sophomore.

Salem Sigma Chi alums entertained the finalists at dinner Wednesday, and this evening they will journey to Portland for dinner with the alumnae chapter there. Monday they had their pictures taken at Jesten-Miller, and an airplane ride with Dick Spooner was planned.

Climaxing the week will be the formal dance at the Oregon Institute of Dancing under the chairmanship of Morris McElwee. A color scheme of gold blue, and white will be carried out, with a false ceiling of white crepe paper, and the entrance hall will be draped with blue. A large blue song book with the words and musical score of "The Sweetheart of Sigma Chi" will be featured on one wall. Black, larger-than-life silhouettes of the finalists and Carolyn Slocum will dominate the corners of the room. Spectroscope lighting will be another feature. Heading the decoration committee will be Colbert Nevin and Don Paulson with Paul Southworth, Doug Webb, Bob Odle, and Jack Thompson assisting.

Music for the dance will be supplied by Kurt Kenyon's orchestra. Asked by Bob Fatland to sponsor the dance are Dr. and Mrs. Robert M. Gatke, Dr.

and Mrs. Daniel Schulze, Dr. and Mrs. Egbert Oliver, and Mr. and Mrs. John Lewis. Also invited to attend are Sigma Chi alumnae.

Formal, crested invitations were sent to the guests, and each woman attending will be presented with a large orchid corsage. Don New is in charge of contacting their source in the Hawaiian Islands from where the corsages are being flown.

Between the hours of 10 and 10:30, the dance will be broadcast over radio station KOCO, at which time the Sweetheart will be presented.



Margaret Sargent

Two WU Coeds Announce News Of Recent Troths

Two messengers with a singing telegram and bearing a box of flowers inscribed with the betrothed names, "Don and Von," surprised Alpha Chi Omega members Tuesday evening with the engagement announcement of LaVon Kelly to Don Cole.

LaVon, daughter of Mr. and Mrs. T. Kelly of Jefferson, Oregon, is a member of Alpha Chi Omega sorority and is a junior at Willamette. Her fiancé is the son of Mr. and Mrs. A. E. Cole also of Jefferson and is a freshman student at Oregon State college.

Margaret Neitling also announced her engagement to Wayne Bass of Lyons at her Stayton, Oregon, home on October 15.

The daughter of Mr. and Mrs. C. E. Neitling, Margaret is a sophomore on the campus, majoring in biology. Her fiancé was formerly employed at Mill City.



Kay Stark



Shirley Hansen

Dance Set By Phi Delt

A big harvest moon will shine from the doorway of the Phi Delta Theta wing upon pledges and their dates as they enter the pledge-sponsored "Autumn Evening" semi-formal dinner and dance tomorrow evening. Harry Summers is general chairman for the event.

Several members will act as waiters for the dinner to be served at 6 p.m. Following the meal, actives and their dates are invited to join the pledge class for dancing to music from the new Phi Delt phonograph. A program, arranged by Larry O'Dell, will entertain the group during the dance. Grant Swanson and Bill Bissel are starred in a skit, Bob Hern will play the piano and Larry O'Dell will be the featured vocalist.

The words, "Shine on Harvest Moon" and black silhouettes of couples, park benches and trees will adorn the walls, announces Dave Card, decorations chairman. Refreshments will be planned by Dick Briggs, while Don Bensen is in charge of place-cards for the dinner.

Alpha Chi Omega, Delta Gamma Honor Housemothers at Sunday Afternoon Tea

Two sororities are honoring their housemothers this Sunday with afternoon teas. Delta Gamma will entertain Mrs. Grace Marquam from 3 to 5 in the Dee Gee house.

Introducing to the reception line which is composed of Vee

Gould, house president; Carol Dimond, Mrs. Marquam and Mrs. Leon Perry, will be Marge Cooper. Inie Lou Wilhelm arranged for the reception line.

Decorations, under the direction of Earlyne Foley, will include flower arrangements and candles centering around the tea table. Pouring will be Miss Lorenna Jack and Mrs. Joseph Matujec. Background music is under the direction of Jean Rickli.

Louise Holmes sent invitations, Joan Klindworth arranged for food, Carol Dimond, set-up, and Patti Jo Hammond was responsible for clean-up.

Beta Chi Chapter of Alpha Chi Omega will entertain with a tea in honor of Mrs. Iva Kirk on Sunday afternoon from 3 to 5 in the chapter house. Tea decorations and flower arrangements will be on a colorful autumn theme under the direction of Barbara Bates, who will be assisted by Joan Vincent, Fern Ingram and Ellen Christensen.

Receiving the guests will be Mrs. Iva Kirk, Mrs. James Walton and house president, Vera Jack. Pourers will be Mrs. Floyd

Seigmund, Mrs. Lewis Griffith, Mrs. Forest Bodmer and Mrs. George Hanauska.

Eleanora Loveless will be in charge of the guest book, and the refreshments are being taken care of by Helen Montag and Barbara Nelson. Clean-up chairman for the event will be Louise Ulvin.

Northwest Artists Display Works in Elfstrom Galleries

By Dale Cleaver

A sight rather new to Salem's eyes is the collection of works displayed in the Elfstrom Galleries. The exhibit provides Salem residents an excellent opportunity to view contemporary philosophies of art as expressed by natives of the Northwest country. Some of the artists exhibiting are better known in New York and Chicago than in their own Northwest, having sent much of their work to eastern exhibits in past years. Much of the work shows interest in the dynamic elements of nature indigenous to the Northwest.

Louis Bunce, nationally known Portland painter, who has exhibited very successfully in New York, has abstracted the qualities of a sea shell and its environment in a colorful three-dimensional design, containing in essence the color and line relationships of the coast. Carl Morris, award winner in the Pepsi Cola show, has on view a canvas spotting sentive line against some pleasing color masses and textures. C. S. Price, who has shown many times in New York, exhibits an original interpretation of horses and landscape in bold palette knife work. A dynamic still life composition in strong color and bold form is Andrew Vincent's contribution from Eugene. Vincent is another artist appreciated on a national scale. Beautiful atmospheric light prevades the portrait of "Marna", executed by David McCosh, nationally recognized Portland artist. Frederick Littman shows a mother and child modeled in plaster with a fresh spontaneous style and a strong sense of movement. A beautiful earthenware plate overlaid with subtle glaze colors and texture patterns is displayed by Portland ceramics expert, Ivan Houser.

Carl Hall, resident painter of Salem who has exhibited in New York through Julian Levi, de-

picts the rugged grandeur of the Oregon coast in an oil study of geological tumult painted in a glaze technique. Esther Huffman, nationally recognized water-colorist, presents a composition representing the rending force of sea against rock. Constance Fowler, one time resident of Salem, exhibits a bold watercolor study of nature with daring composition, and Robert Voight of Salem has entered a masculine watercolor interpretation of North Silver Creek falls. Larry Boulter, also of Salem, has presented a fresh decorative miniature landscape in watercolor, and Jerry Stone of this city shows a fine understanding of light and space as well as a keen social sense in his Pocket Book Paradise. An interesting design in color and line harmony is shown by Clifford Gleason, another of Salem's artist in residence.

JEWELERS - OPTOMETRISTS
Brown's
JEWELRY AND COURT STYLISTS
Salem's Leading Credit Jewelers and Opticians

WHO IS IT?

No one answered the riddle correctly last week. Can you identify the person:

My first name is princely,

My second is small,

My third is quite townly

Can you guess me at all?

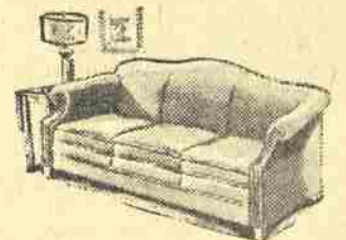
Commercial Book Store

141 North Commercial

Phone 3-4534

Tomorrow Is the Last Day for

Elfstrom's



CRAZHOUSE

.. Sofa Sale

Look at These VALUES!

2-Pc. Modern Suite	\$430.00	243.50
2-Pc. Modern Suite	337.50	174.75
2-Pc. Suite	198.50	84.75
Pillow Back Soft	297.00	112.50
Club Sofa	316.50	112.50

R.L. Elfstrom Co.

340 Court

Phone 2-2493

WILLAMETTE

Social Whirl
DONA ADAMS - Editor

YW, Indeps, IRC Sponsor Post Game Kitten Kapers

"Kitten Kapers", honoring the Willamette Bearcats and the Linfield Wildcats, is the theme of tonight's post game dance in the gym sponsored by the YWCA, the Independents and the International Relations club. Gary Lawrence, Indep president, is general chairman.

Formal To Be At Lion's Den

The Independents will enter the Willamette social whirl next Friday evening when they sponsor their annual, formal dinner dance at the Hollywood Lion's Den from 6:30 to 11 p.m. Pat Rodean is general chairman for the event.

Following the dinner, served by the Gleason Catering Service, guests will dance to music by a local orchestra. Theme and decoration plans will be announced later.

Tickets for the formal affair will be on sale Monday in Eaton hall, Baxter and Lausanne hall, the season since the tussle with Linfield is the last home game

Gigantic pom-poms of cardinal and gold will hang from either side of the entrances and also from the center of the room. Scalloped around the balcony will be crepe paper streamers of the two school's colors. Shirley Dean of the Independents and Carolann Snarr of the YW are decoration chairmen. Music to records has been arranged by Ozzie Magellenas.

IRC members, Bob Rhoads and Bob McMullen, are in charge of refreshments of cokes which will be sold in the balcony. Chaperones will be Mr. and Mrs. Frank Fisher, Prof. and Mrs. Edward T. Gibson and Mr. and Mrs. Charles Barclay as contacted by the YMCA.

Tonight's student body post game dance will be the last of this fall.

Pi Beta Phi Honors Dads At Banquet

Father, Dad or Pater, whatever he may be called, will be the honored guest and special date of his Pi Beta Phi daughter tonight when the sorority entertains with a Father's Banquet at 5:46 at the chapter house. Following the dinner the group will attend the Linfield game together and then return to the house for a short fireside.

Entertainment arranged by Shirley Wiest will feature an appropriate reading by Addyse Lane, a piano novelty by Martha Benard and a trio of Wejje Glasse, Shirley Wiest and Martha Benard singing "Siest." Invitation letters to the banquet were sent by Barbara Goldman.

Informal decorations are arranged by Avis Roberts, while Wejje Glasse will make the place-cards. Guest book decorations were created by Diane Proctor. Barbara MacDuffee heads the tables and chairs committee.

Wesley Group Plans Festive Barn Party

La Follett's barn at Four Corners will be the scene of a festive barn party tomorrow evening at 8:30, sponsored by Wesley fellowship.

Music will be furnished by records for the square dancing, schottisches and polkas which will be called by Marion Sammis of Oregon State. Other entertainment for the evening will include games, group singing and refreshments of cider and doughnuts.

Decorations for the barn will be planned by Jackie Chute, Doug Nicall and Ann Carthell. Providing the refreshments are Sally Kibbey, Marilyn Dixon and Don Benson. Working on invitations are Pat Long, Edy Jensen, Paul La Rue and Dick Lambert.

A twenty cent charge will cover the cost of transportation and refreshments. The committees invite all Willamette students to attend.

Chi Os Entertain National Officer

Mrs. Lola Jeffries Hanavan of Detroit, Michigan was the distinguished guest at the Chi Omega house for Tuesday's luncheon. A member of the national executive board of Chi Omega, Mrs. Hanavan was designated as "Woman of the Month" in Detroit not long ago.

For her outstanding services to the University of Michigan she was awarded the 1947 citation of merit by the Alumnae of the University. Mrs. Hanavan is vice-president of a large Detroit mortgage company also.

Three Coeds Act as Hostesses

Three Willamette coeds will be hostesses at the regular Sunday evening broadcast of the Standard Hour next Sunday. Harriet Ness, Addyse Lane and Edith Fairham will welcome people to the broadcast in the Benson high school auditorium in Portland. The Portland Symphony Orchestra will perform, conducted by Warner Jansen.

These girls have worked on publicity for the Standard Oil Company of California at the Oregon State Fair and the Pacific International Livestock Exposition.

Optimists Give Flower Show

The Salem armory will be the scene for the Chrysanthemum show which will be held November 6 and 7. Sponsored by the Salem chapter of Optimist International, the show will feature contests on table settings, and floral arrangements.



—Photo by Dave Scott
Taken back a mammoth spider spinning a "Silver Web" on the porch were two couples attending the Alpha Chi Omega semi-formal dance Saturday evening. Eleanora Loveless, Bob Johnson, Pat Howard and Chuck Bows were trying to make their way through the web to join the dancers inside.

The Amen Corner

The first official Oxford club on the campus was organized Tuesday, with eleven members present. The purpose of the club is to promote Christian spirit on the campus and fellowship among those students interested in working in the church. It is for all pre-ministerial students and religious students regardless of denomination.

Officers elected are Paul LaRue, president; Beth Miller, secretary; Dave Poindexter, program chairman; Phil Shaw, Mary Kowitz and Jack Wilkins, constitution committee. Future meetings will be held the first Tuesday of each month in Chresto cottage.

The Canterbury club will meet for an evening worship service at 6 p.m. Sunday at St. Paul's Episcopal church. A supper will be held immediately following at the parish house, after which the philosophy of religion class, under Dr. Raymond Withey, will join in a discussion. Dr. George Swift will speak on the beliefs and the ritual of the Episcopal church.

Last night the Catholic Club held a short business meeting in Chresto cottage. Following the meeting the young people of St. Joseph's Catholic church invited the group to join them in a mixer and dance at St. Joseph's hall.

Tomorrow night at 8:30 Wesley fellowship will have a hayride and barn-party, and Sunday a concert of American music by Josephine Albert Spaulding will be presented at the First Christian church.

Rev. Seth Huntington of the Congregational church will lead a discussion on "Marriage is for

You, if . . ." at the regular Sunday evening meeting of Phi Zeta Christo. The meeting begins at 6:15 in the First Christian church.

A discussion meeting will be held by the Westminster Fellowship in the manse Sunday evening at 6 o'clock. The topic will be "New Horizons in the Orient", led by Rev. John Goodenberger, who spent the early part of his life in Siam. A light supper will be served following the discussion.



—Photo by Dave Scott
Hard times characters Barbara Miller, Ray McCoy, Jeanette Gilbertson, Bob Miller, Pat Jones and Ray Swan pause for a coke and caramelized apples at the Halloween party at the Pi Beta Phi house Saturday night. On the floor behind them are some of the results of the jack-o-lantern and mask contests.

IRC Meeting To Discuss Northwestern Conference

The International Relations club will hold its regular meeting

on Wednesday at the Phi Alpha house at 7:30 p.m. A general discussion of the Northwestern IRC conference to be held at the University of Oregon on December 3 and 4 will be the main topic.

The IRC recently purchased two study guides from the Brookings Institute, Washington, D. C., for 1947 and 1948. These books have been placed on reserve in the library and are available for all interested students.

Russell Gochnour will lead a discussion of the German Peace Settlement and the Problem of China which are discussed in the 1947 issue of the study guide mentioned above.

IRC officers have offered a general invitation to all Willamette students to attend this meeting.

Gays Fine Candies

For the Best

in

Quality and Taste

Phone 2-9235 135 N. High

McMillan's Fountain Lunch

Where the Gang Meets to Eat



Next Time Try Mac's

1949 State Street

Phone 9825

LES NEWMAN'S

The Friendly Store

Men's Furnishings, Work Clothing, Shoes and Luggage
Military Supplies

Phone 3-5508

179 N. Commercial St., Salem, Ore.

PHONE 3-9125

Salem Laundry Co.

(WIEDER'S)

263 South High Street

LAUNDRY DRY CLEANING SERVICE

Sextet Will Entertain for Chest Drive



Annabelle Kropp, Ella Lou Ball, Pat Ryan, Margaret Powell, Gloria Nandie and Mary Lynne Scott will take part in the variety show Saturday night, November 13. Proceeds of the entertainment will be given to the school chest.

Willamette Debaters to Battle In Exhibition Match Tomorrow

Jack Gunn and Elliott Motschenbacher will represent Willamette in an exhibition debate before the Oregon Inter-collegiate Forensic association Saturday.

The conference, to be held at Lewis and Clark college, will be attended by most of the schools in this district who will observe and discuss phases of debate for this year.

Only teams selected for their excellent reputation for debate have been chosen for participation in the exhibit said Prof. James W. Kirkwood, head of the speech department.

The subject for the WU team to uphold is "Resolved, that the United States should adopt a system of planned economy."

The debate squad is also now

engaged in preparation for the Seattle trip which will be November 22. The tournament is an annual event of the Western Association of Speech Teachers.

Willamette will be represented there by two men's teams and one women's team. Betty Ferguson and Joan Morgan will constitute the women's team, while Tom Bartlett, Bob Sayre, Jack Gunn and Elliott Motschenbacher will speak for the men.

Kirkwood added, "We shall compete in the following events: debate, extemporaneous speaking, impromptu speaking, after-dinner speaking and experimental speaking."

"As plans are completed, more people may be added to the group."

Lost and Found

A gabardine top coat, size 39, was taken from Pythian hall in Portland following last week's game with Lewis and Clark College, according to word from that school. An appeal is made for some Willamette student to return the coat and pick up his own as there was a topcoat left behind which does not belong to any LC student.

The missing coat belongs to William G. Anderson, box 153, Lewis and Clark College, Portland, Oregon.

Library Exhibits Book Collection Of European Art

"Vitreux des Eglises de France", or "Windows of the Churches of France", and other fascinating titles of European books covering every phase of art were on display in the Willamette library Tuesday.

The \$20,000 exhibit of rare European art books is from the firm of Art Book Imports of New York. The majority of the collection was written in French with a few German and Italian volumes.

In charge of the display is Sidney Vereker, who was originally from Phoenix, Arizona.

Wallulah Lists Next Week's Pic Schedule

Wallulah portrait sittings, scheduled from Monday through Friday, are to include law students, Salem resident students, men living at the YMCA, and those who missed previous appointments.

The Jeston-Miller Studio, open from 9:30 to 5:15 p.m. will conclude the Wallulah schedule next week.

Presidents of all clubs and honoraries whose organizations wish to purchase space in the yearbook are urged to notify the Wallulah office. Layouts are under way, and as yet the office has not heard from several organizations. An active membership list must also be turned in to the office by all living organizations, clubs, and honoraries.

To date, only 200 students have purchased yearbooks. At least 1000 sales are needed by Thanksgiving if the Wallulah is to come out next June. Students may pay their one dollar to any solicitor or to the Wallulah office.

Geri Bowles, Wallulah editor, also announced that pictures from last year's annual are now on sale in the Wallulah office.

Woman Enters Legal Study

Bette Ehnisz, sole female student of the Law school, is starting the long road to the legal profession. Since the age of 14, she has wanted to go into the field of legalities. Her pre-law work was done at Sacramento college and University of California.

Miss Ehnisz said she expected a lot of work and her expectations have been more than filled. Being a "lonely onion in a petunia patch" at first made her feel slightly conspicuous, but now she's beginning to get used to being a "lady lawyer," she remarked.

First Whip Whitman Banquet Helped WU Victory in 1929

By Bob Hearn

Since the first Whip Whitman banquet in 1929, the traditional event has served to fan the flames of rivalry which culminated last year with the stealing of the Paul Bunyan trophy axe by Whitman athletic supporters. Despite bad luck in recent years, Whitman was not always the underdog.

Previous to the first banquet, Willamette had lost the Whitman game for nine years in succession. Coach Roy "Spec" Keene was afraid that the team would be playing under a "defeat complex" unless spirit was bolstered.

That a banquet would be instrumental in gaining this spirit was seen by Dr. W. C. Jones who suggested that pep songs, musical numbers, yells and speeches be the order of the day.

Toastmaster was William Mumford, student body president at that time. About 325 enthusiastic students, townspeople and members of the faculty were on hand to participate in the first Whip Whitman banquet.

Willamette went on to win its game, 40 to 13, and the banquet became traditional except for the war years between 1942 and 1946.

This year, with yell competition between the classes for the Whip Whitman trophy, spirit will again be the keynote of the banquet which will be held Wednesday in the Salem high school cafeteria.

ASWU Backs Art Newsletter

The Arts Newsletter, which began publication last week under the editorship of Shiela Ryan, Al Laue and Bill Smith, became an ASWU-sponsored publication, following approval of the student council this week.

Laue, in explaining the merits of the publication to the council, said that it would be published twice monthly and would be especially mailed to persons in Salem interested in art, drama and music.

"The purpose of the letter," Laue said, "is to bring about a closer feeling between Salem people and the University in the field of art. We believe that the letter will give the people of Salem a way of knowing what the University has to offer in the fields of art, drama and music."

The paper is being financed through the mimeograph allocations of the three departments affected and the mailing fees are paid by the departments.

'Varsity Varieties' To Close Campaign For School Chest

Satirical radio commercials and detective stories, black-faced actors, ballet and tap dancers and songs, serious and otherwise, will highlight "Varsity Varieties" which will be presented at the Salem high school auditorium November 13.

The two and a half hour show will climax the week-long school chest drive and proceeds will be contributed to this cause. Emcees Ray Loter and Ray Yocom will start the program at 8:15, and 20 acts will follow.

Prominent campus Rubes have hinted at a surprise act, implying that this alone will be worth the 50 cent admission price. Tickets will be on sale during the drive in the "Cat Cavern, Eaton hall, Miller's department store and living organizations.

Library Art Show

Now on display in the University library is a group of paintings by Clifford Gleason, a local artist.

Gleason has been studying art under Mrs. Esther Huffman at Willamette and under the University of Oregon extension program.

Exclusive Creations in Diamonds
Nationally Advertised Watches and Jewelry
The Jewel Box
"Guaranteed Watch Repairing"
443 State Phone 5510

Send the COLLEGIAN
\$1.50 per Semester

Open Every Day 8:30 to 12 - Saturday 1:00 A.M.
London's Candies - Beverages - Cigarettes - Magazines
Mar's DESSERT LUNCH
Breakfast - Lunch - Dinner
Phone 2-5434
M. H. Stuhr 255 North High Street, Salem, Oregon

L. G. Balfour Co.
"Your Fraternity Jeweler"
Pins, Rings
Novelties, Dance Programs
Favors, Stationery
N. W. Office and Display Room
807 General Insurance Bldg.
Seattle, 5, Washington
MARK McCOLM, Mgr.

WILLS MUSIC STORE
Saul Janz - Vernon Wiscarson
Everything Musical
Books - Studies - Records - Radios
Pianos - Band and String Instruments
432 State Street Salem

TOWLE'S
New masterpieces!
French Provincial
Madeira
We are proud to present...
Madeira - graceful and romantic, its delicately "embroidered" flowers utterly feminine... French Provincial - charmingly simple, with lovely flowing lines and graceful curved surfaces. Both are fashioned in lifetime solid silver. Let us show them to you - and the many other lovely Towle patterns! We can explain simple, inexpensive ways to collect your set.
French Provincial - Six-piece place setting \$27.00!
Madeira - Six-piece place setting \$24.50
*Featuring the hollow-handle butter spreader Prices include Federal Tax

STEVENS & SON
339 Court Street Salem, Oregon