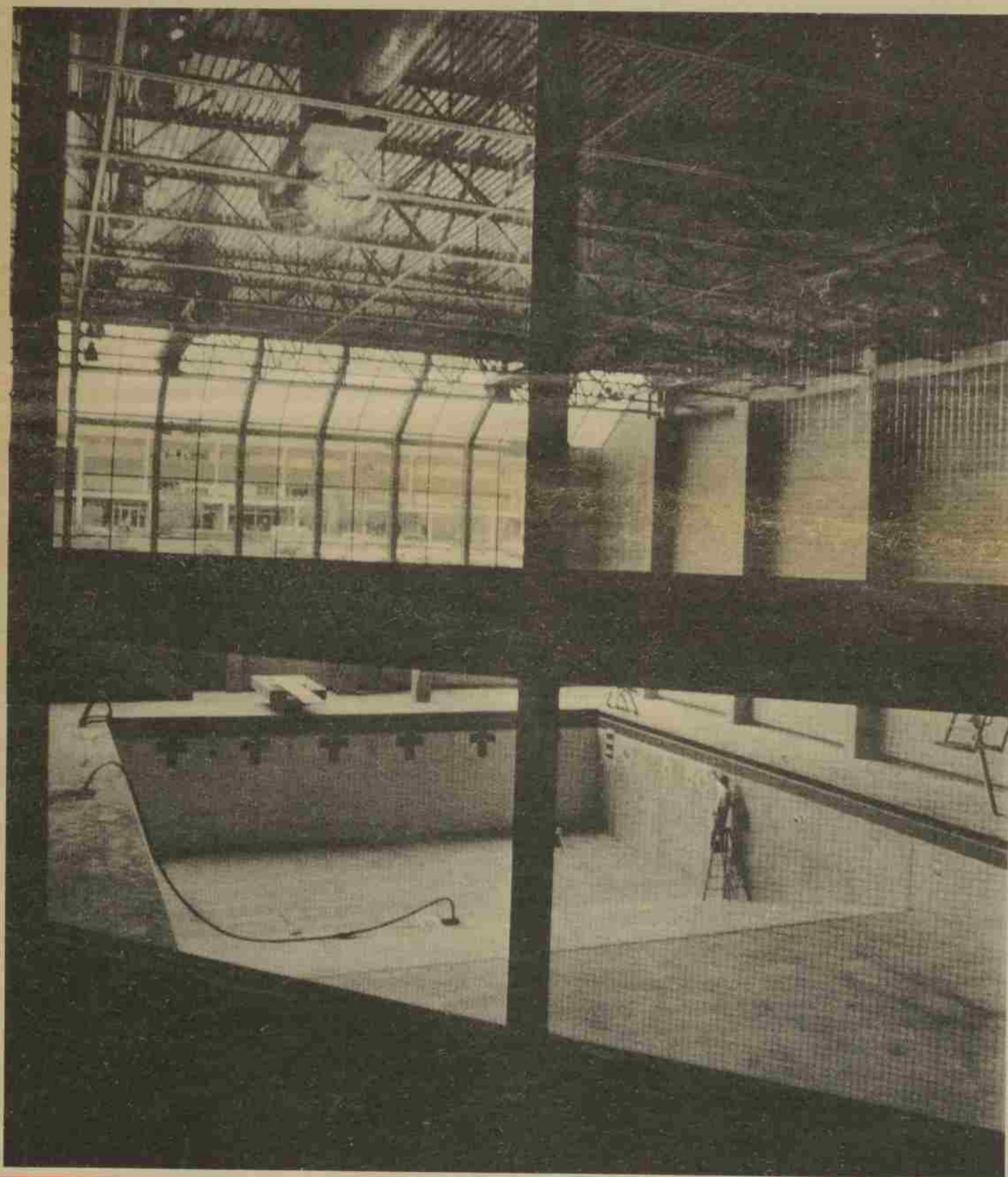


WILLAMETTE  
UNIVERSITY



# SCENE



**Sparks Center Nearly Ready**

## Place to Play Opens Soon; Dedication Set May 11

"I knew it would be nice, but this is fantastic!" exclaims an impressed visitor as he gazes into the large field house portion of Willamette's new Lestle Sparks Physical Education & Recreation Center.

The other sections of this brightly colored 72,000 square foot "playground" are equally impressive, ranging through the sparkling natatorium, maple-floored gymnasium, padded multi-purpose room and handball courts, for instance.

The Edwin and June Cone Field House, at 150' by 120' with a 30' ceiling and seating for 3,000, should become a major spectator and convention arena in Salem as well as a multi-faceted play area. With bleachers retracted, three tennis courts are operational, one of which also serves as the main basketball court. Large nets for baseball hitting, padded cushions for high jump practice, goals for team handball practice, a trampoline, and other paraphernalia along the sidelines are indicative of the versatility of this Uni-Turf floored facility.

A few strides down a ramp to the main foyer allows a viewer to watch activity in the 6-lane, 25-yard swimming pool on the lower level. Further strides along a corridor places one between four handball courts (two of which will be operational to start) and the 120' by 130' gymnasium. The gym, named in honor of former football letterman Chester Henkle ('04), is a major play and instruction area with no seating. It has room for two full-size basketball courts and several volleyball and badminton courts. It will be the practice area for gymnastics, fencing, modern and folk dancing as well. The multi-purpose room (wrestling, floor exercise, judo and self-defense), is also on the main level.

*Continued*

The public is invited to attend dedication ceremonies of Sparks Center at 11 a.m. May 11. Tours to follow.

# Sparks Center:

*"I knew it would be nice, but this is fantastic."*

Continued from Page 1

The lower level has entrances to the handball courts and access to the exercise room (conditioning, fitness and weight-training), and locker area with saunas for men and women.

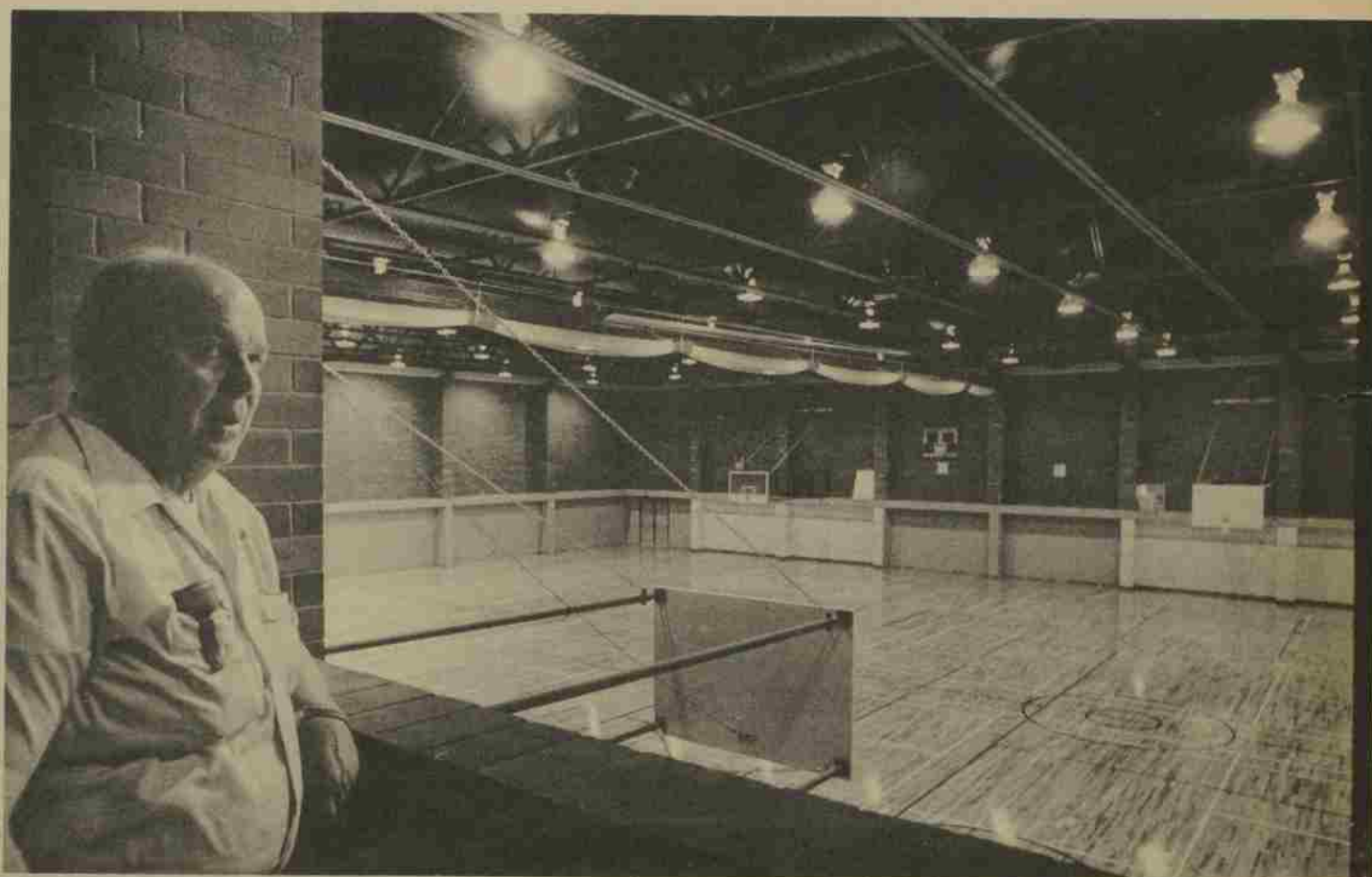
Staff offices are on the upper level and in area that overlooks the foyer and near the Alida Gale Curry theatre-classroom which seats 80.

Dedication day with public tours through the facility is May 11 (11 a.m.) in conjunction with the University's Alumni Day observance. Alumnus Les Sparks '19, for whom the facility is named—in honor of 55 years of association with Willamette as a student, teacher and coach—will be feted at a Bearcat Comeback for former Willamette athletes that day at noon.

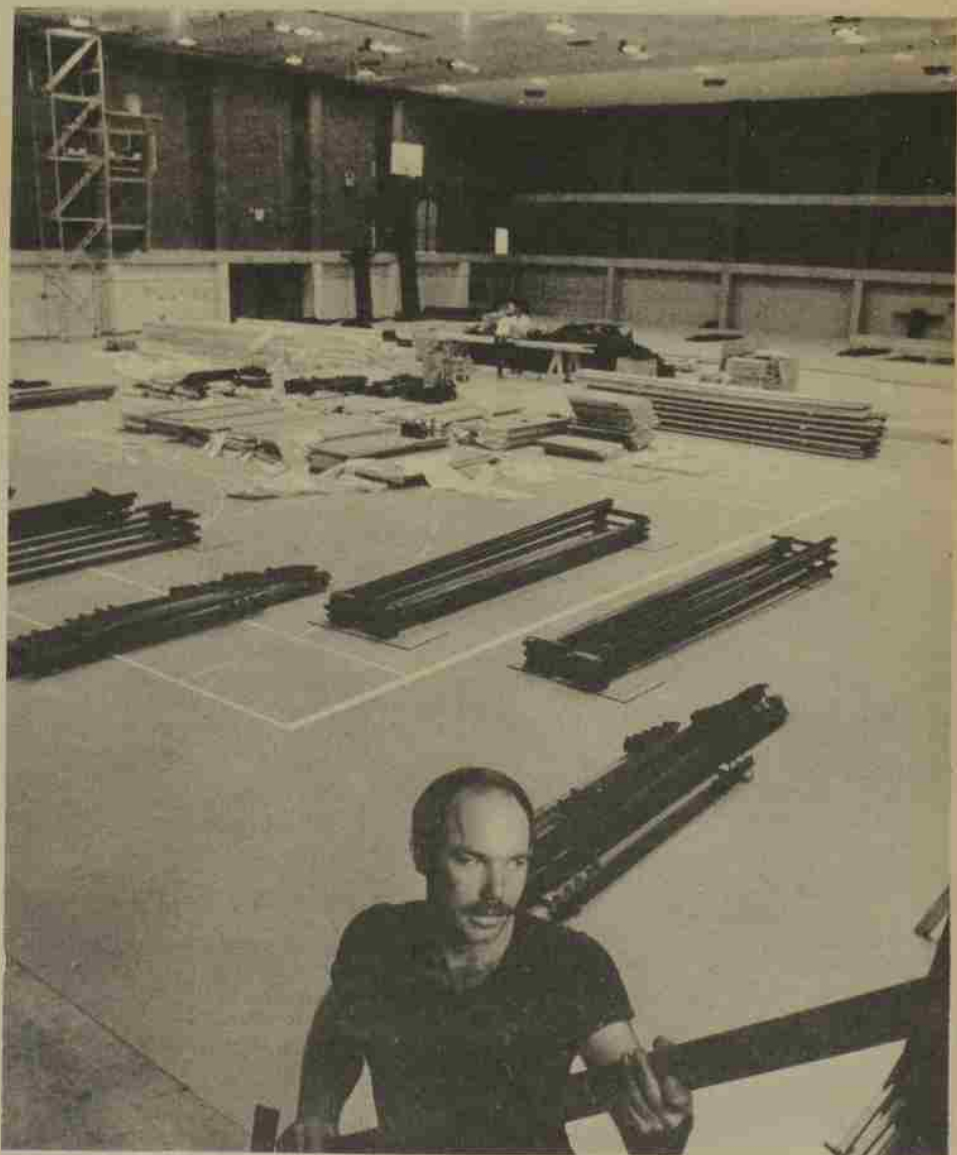
Alumni will have a chance to try out the new facilities in a unique and fun-filled "Alumathon" of 10 events starting at 2:15. None of the events require cardio-vascular stress and even Sparks at age 76 is a likely competitor.

Sparks was around when Willamette's present gymnasium was dedicated, a 30,000 square foot building constructed in 1923 at a cost of \$80,000. The old gym will get a new name and some minor inside alterations to accommodate the theatre activities and some basement laboratories for the art department by next fall.

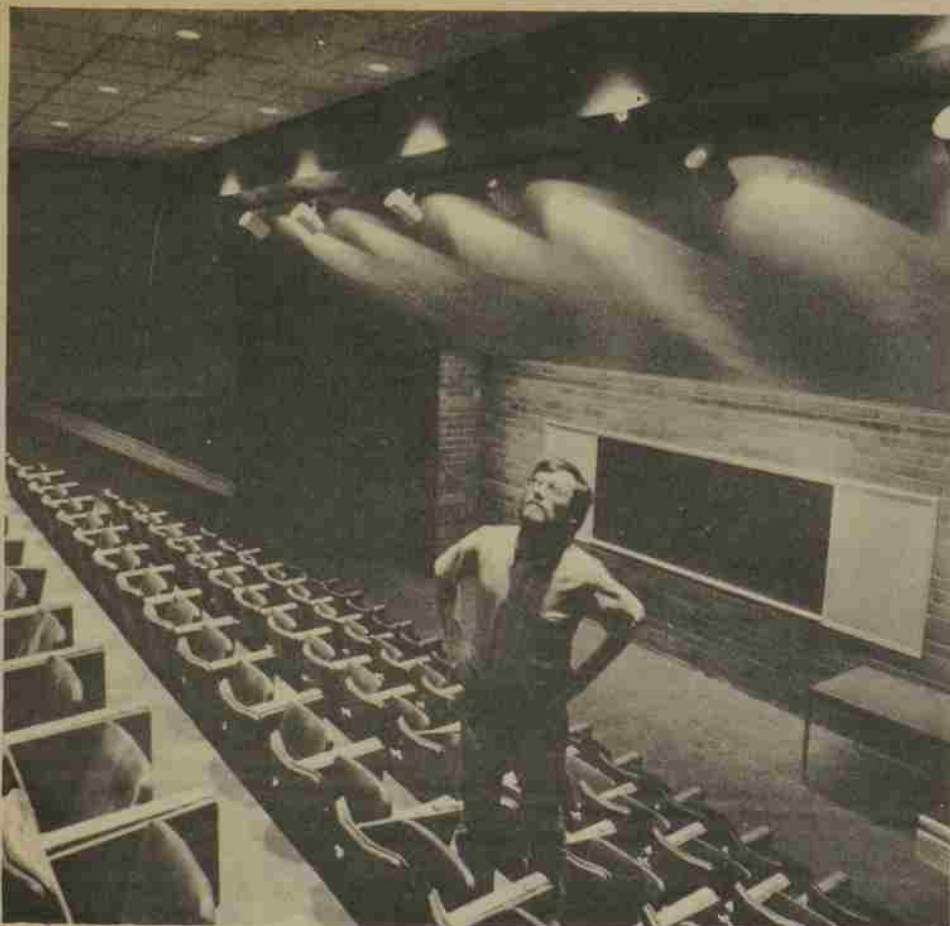
Construction of Sparks Center has taken 21 months after the project received the initial green light in October, 1969. Groundbreaking was on July 28, 1972 after a total cost of \$2.6 million was projected. Of that total, \$2,232,000 has been given or pledged to date.



**BUILDING INSPECTOR** Frank Martin looks out over the Chester Henkle gymnasium which has alone more than twice as much floor space as Willamette's old gym floor. It is marked for two full basketball courts, three volleyball courts and eight badminton courts with a portable divider in the middle. The gym will be the main play area for men's and women's intramurals. Below, a student inspects the Alida Gale Curry theatre-classroom, named in honor of the long time head of the women's physical education activities. The classroom will seat 80 students.



**WORKMEN** are busy putting up bleachers in the Ed and June Cone Field House. When finished by May 8, the bleachers will have a seating capacity of 3,000 with padded backs. A Uni-Turf floor covering will handle the variety of activities planned for the field house, ranging from tennis to conventions. It will be the main basketball pavilion.



By PATRICK PINE '74

Career education emphasis is having its impact on internships at Willamette University and elsewhere. Internships are temporary student positions with off-campus private and public institutions providing work experience to augment classroom studies.

I have enjoyed the benefits from three internships, but in the process I have become somewhat alarmed at what could develop into a counterproductive glut of schools and students seeking meaningful intern experiences. With levels of education from junior high to graduate study seeking work experience for students, the ability of "living laboratories" to respond becomes a major problem.

My experiences include research for the Salem City Manager (Spring, 1972); research for State Senator Wallace P. Carson Jr. during the 1973 legislature; and currently research and consultant studies for the Capitol Planning Commission of the State of Oregon.

As one of the fortunate few to have three different internships, I've drawn some conclusions. My experiences are limited to the social sciences and I speak only to that are of liberal arts.

WU majors in Urban and Regional Government are required to complete one intern experience and take others optionally. Professors Ed Stillings and Sue Leeson supervise these interns. The purpose is to give the student a basis for relating practical reality to classroom theory; testing the viability of a student's interest in government; providing relatively cost-free assistance to government; enhancing university-community relations; and discovering one's own strengths and weaknesses.

Interns in this program and political science are classified in terms of the type of experience they gain — administrative, legislative, state, local and/or variations of these. Some relate solely to urban government, others to political science and other social sciences.

#### The benefits to interns

What have been the personal advantages of my intern experience? Broadly speaking, they include: improved writing skills, better research methods, the ability to cope with pressures of time and most important, the discovery of a specific field of interest for future employment.

In the Salem City Manager's Office, I learned how public officials relate to the public, how many (oh! how many!) hours above and beyond the eight-to-five routine

## AN INTERN'S CONCERNS

*"Intern programs should recognize that 'glamor' jobs may not really be so glamorous after all and should stress quality not quantity. The reverse is happening and the result is disastrous."*

must be devoted to one's job, and how one is expected to perform in Salem's City Hall. Writing skills were enhanced by the completion of a handbook of policies still used by City Council members. This project allowed rough formulation of a style of writing reference materials in a concise and accurate manner. The project opened an avenue for later interns who could correct my errors and cover new subjects of concern to the policymaker.

The City of Salem also taught me that some work is tedious, repetitive and perhaps unnecessary. My feeling that a few city administrators are too often out of touch with the citizenry is inescapable and frustrating, yet it gives me a perspective on necessary alterations. For instance, I disagree with the "white shirt, tie and a crewcut" approach of key city employees. While this appearance appeals to many, it may be a barrier to real communication for others. As an administrator I would hope to be able to judge the audience to whom I will be relating and modify dress and appearance accordingly. If not, barriers to communication may rise before I even begin to converse with the citizen.

#### A contrast in outlook

In the state legislature, Sen. Carson assigned me to work of a very different nature. He did not care to see me in the office very often, something of a change from City Hall, where one's physical presence seemed to be the major indicator that one was doing work. This contrast between physical presence and "work on your own" brings up an important distinction in the outlook of offices working with interns.

Until recent sessions of the legislature, Willamette students generally held available intern-positions with state representatives. Yet the emphasis on career education by public schools has caused competition for these jobs and created a major influx of interns associated with the legislature. Not only Willamette, but the University of Oregon,

Oregon State University, Chemeketa Community College and Salem junior and senior high schools initiated programs to place interns with legislators. This is understandable and shows that Willamette is not the only school deserving such privileges.

Yet this influx creates problems. As Carson notes, the legislator is now in the position of handling either too many interns or not enough students with the ability to work independently. The quality of intern programs varies greatly and supervision by school officials tends to be erratic. Willamette students are fortunately required to study materials on the legislative process, take tests on these materials as well as current affairs, and to report regularly on their progress. This is not the case for some programs and the lack of supervision by school officials places a burden of supervisory tasks on already overburdened legislators. One senator reported anonymously that he had eight interns during the 1973 session and stated confidentially, "Most of those kids weren't worth a damn, we had them staple and punch holes, but if I turned down one request for an intern position, I'd run the risk of alienating a faction of my constituency. . . I haven't got the time to babysit."

#### Hurting the image

This implies, unfortunately, that most high schools and especially junior high schools may be hurting the image of interns and that the poor intern program not only turns off the employer, but is disillusioning to the student who finds himself stapling pages day after day. Research positions should be strictly limited to upper division undergraduates and graduate students.

Particularly problematic is the legislature which has a kind of glamor that attracts many interns, qualified and unqualified. Intern programs should recognize that "glamor" jobs may not really be so glamorous after all and should

stress quality, not quantity. The reverse is happening and the result is disastrous.

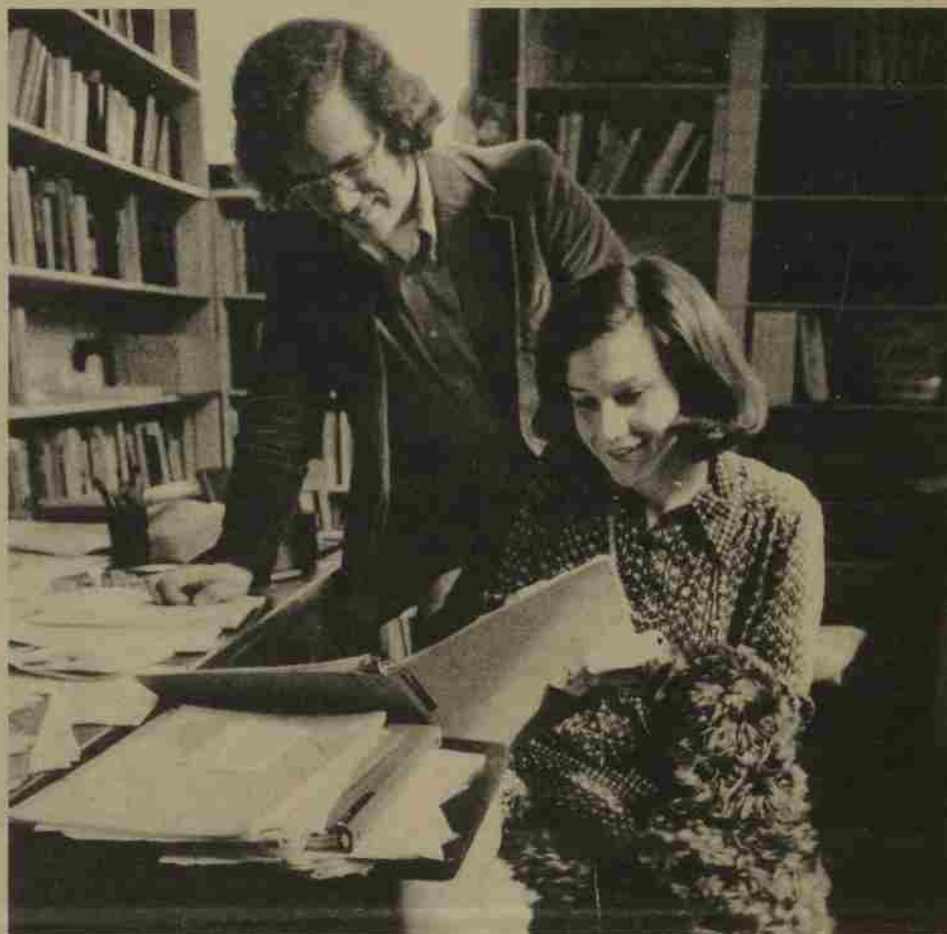
The Capitol Planning Commission for the State of Oregon concerns itself with planning for the Capitol Mall area directly to the north of Willamette's campus. Research for the future is difficult and is teaching me the value of concise writing and acquaints me with the myriad of state agencies. I am learning that communication between governmental bodies is lacking and probably always will present a problem. This experience will hopefully provide me with a job after graduation.

The following suggestions should be helpful in summing up my feelings about career education programs:

1. Supervisors of intern programs must furnish well-informed, well-qualified students.
2. Do not overburden the employer with too many bodies, not enough brains.
3. The employer must provide meaningful experiences to the intern which require time and positive attitudes — at the risk of saying no to many requests for intern positions.
4. The intern must not take a position merely to escape the classroom and must evaluate the ability to fulfill duties and work independently.

The ideal of moving the student out of the classroom into the "real world" may be possible when the student is ready for the "real world" already. If not, failure reflects on all interns and will make the later transition to permanent employment even more frightening to the student who has failed once before.

(Ed. note: A new policy statement setting up certain standards and requirements for three types of internships — insight, major program and professional — was recently adopted by the Willamette faculty. The internships from all areas of the University will also come under the jurisdiction of an intern coordinator who is responsible for seeing that the standards are maintained).



Pat Pine gets advice on his intern report from Professor Sue Leeson and "Tigger" Leeson.

### WILLAMETTE SCENE

Vol. 7 No. 3 March, 1974

EDITOR: Robert C. Woodie  
Assistant: Jan McMillin

Published January, February, March, August, September and November by Willamette University, Salem, Oregon 97301 for constituents of Willamette.

Second class postage paid at Salem, Oregon 97301.

This issue of the Willamette Scene is published for the combined circulation of The Oregon Statesman and Capital Journal newspapers, Salem. Willamette University is solely responsible for the editorial contents and letters should be addressed to Editor, Willamette Scene, Willamette University, Salem, OR 97301.

# Just Survival? Or . . .

*Just survival or survival with significance?*

In a sense, this served as the focus for a special Committee for Institutional Change which deliberated from October to February before issuing a report that rings with survival and significance for Willamette University in the years ahead.

The Committee report, which follows, serves as a starting point for Willamette's response to the "doom and gloom" predictions linked more and more frequently to higher education — particularly the small private schools.

"Significant," "traumatic," "challenging," and "overdue," are some of the one word labels attached to the report, but to committee vice chairman Russ Beaton, Associate Professor of Economics and Willamette alumnus ('60), it says "get busy."

"We hope it stimulates individual thinking and perhaps some changes in attitude," Beaton elaborates. "We haven't changed anything yet, but our findings and recommendations communicate a sense of urgency concerning the need for change as well as the need for enthusiasm toward a common purpose."

In outlining his charge to the committee on Oct. 15, President Robert Lisensky said its study must be concerned not only with the financial and physical resources of the institution. "It must look more especially at the quality of personal interaction between the members of the University community — the development of an environment that enhances the quality of life in all its aspects and provides optimal conditions for the learning process."

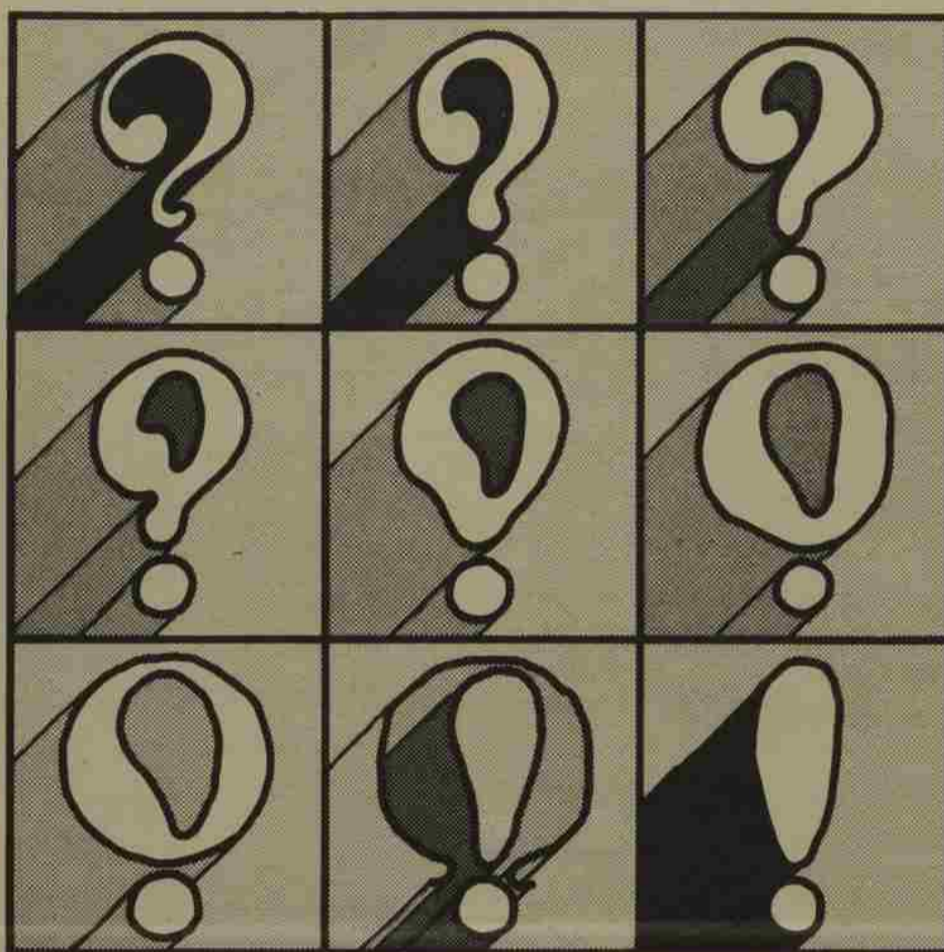
Under the chairmanship of Milo Harris, Vice President for Planning and Finance, the committee of seven faculty members, two students and two administrators went to work. It examined current trends in higher education and projected the external environment in which Willamette will probably operate in the future. Following an analysis of the educational opportunities at Willamette and an assessment of the University's ability to respond to the changing external environment, the committee recommended the following action to the President:

1. Creation of three task forces to generate proposals on subjects of vital, immediate concern to the University;
2. Appointment of a committee on University governance;
3. Attention to "other areas of concern" as task forces complete their assignments; and
4. Adoption of the proposed organizational structure for the task forces and procedures for implementing task force proposals.

The committee told Dr. Lisensky "We further hope the report will generate a dynamic environment in which somber financial warnings about the future will be met with creative enthusiasm for finding solutions to old and new problems. In order to contend successfully with economic constraints, we must be creative in our efforts to provide sound, flexible educational opportunities at minimum costs."

Dr. Lisensky termed the report "an outstanding document which represents an amazing sense of unity and dedication."

He has taken the action recommended by the committee and the Willamette Scene will be reporting periodically on progress of the task forces and their proposals. RCW



## Survival with Significance!

A Committee for Institutional Change responds to "doom and gloom" predictions and outlines the steps needed to enhance Willamette's Educational opportunities in the face of alarming trends.

### WARNING SIGNALS

1. Skyrocketing operating costs.
2. Declining birthrates nationally.
3. "Drying up" of financial resources, both public and private.
4. Dissatisfaction with a lack of diversity in small colleges and universities.
5. Decreasing enrollments in undergraduate programs, and the potential impact on professional schools.
6. Current student demand for vocational-technical training.
7. Growing two-year options at community colleges.
8. Diminishing importance placed on a college degree.
9. Intense competition among private colleges for students.

These are the continuing trends the Committee for Institutional Change has found in examining Willamette's external environment and are documented in materials collected by the Committee. We set them forth boldly as Nine Warning Signals to draw the attention of the University community to our current predicament. These Warning Signals do not apply uniformly to each college and program at Willamette at present but they must be heeded by the entire University because of a fundamental interdependence of programs within the institution. Human beings tend to postpone difficult decisions and to put off planning until a crisis hits — until it is too late. This is precisely the situation we must avoid as a University if we are to survive and

meet the needs of higher education in the future.

### THE WILLAMETTE SITUATION.

#### A Capsule Summary

In the first document formally approved by the Committee, drafted after review of considerable data concerning enrollment, population, job market and educational trends, the Committee concluded that "... the traditional operating procedures and assumptions of a school like Willamette will be seriously challenged." What does that statement mean? Related to the Warning Signals, it means this:

As birthrates decline, and fewer people of traditional college age choose to attend college or opt for vocational training, it is increasingly difficult to maintain our accustomed student population and profile. In order to attract and retain students we must offer programs and project an image which permit us to compete favorably with other private — and even public — schools which also are battling to survive in this environment. Costs will continue to rise but tuition cannot rise indefinitely or we will price ourselves out of the market. Neither can we rely to the extent we previously have on the resources of the Board of Trustees and a few other generous donors.

Just where the money will come from is not clear. As a minimum we must improve our effectiveness — as instructors, as administrators, as decision-makers. We must pay more attention to modes of inquiry in

meeting our educational mission. We must concentrate on relationships among undergraduate and graduate programs with the goal of mutual enrichment and reinforcement. We must develop ways to attract a wider variety of students. We need to make our services available at more convenient times and places. We must gather more accurate information about educational needs of our students. We must re-evaluate the University's commitment to prescribed standards of conduct. We need to streamline the decision-making processes of the University. We must make more effective use of the physical plant and find ways to take Willamette to the community.

In the face of dismal projections and the sounding of Warning Signals, however, the Committee endorses Willamette's commitment to the liberal arts and to professional and graduate programs which build on a liberal arts education. Liberal arts goes considerably beyond any specific program. By liberal arts we refer to an attitude or approach to learning which involves a respect for ideas and cultures, and the goal of intelligent, sensitive insight into the human situation. We believe it is through liberal arts education that questions of the future, involving moral judgment, social and technical complexity, creative leisure and personal abilities to adjust to rapid change, can be addressed most adequately. The framework for dealing with such questions traditionally is developed through liberal arts undergraduate programs. The development of professional expertise through graduate training presupposes the values implicit in the liberal arts framework. Thus the Committee sees a continuing and indissoluble link among the colleges and programs at the University.

We recommend that the University's programs be given a new look: made more available, more flexible, more attractive, more contemporary. There is a continuing and urgent need for an educational institution which emphasizes the liberal arts both for its own sake and for its creative, sensitive application through professional educational programs. There is an equally urgent need for Willamette to re-evaluate, modernize, streamline, broaden and economize in undertaking this educational mission if we are to survive and meet challenges of the future.

### TASK FORCE RECOMMENDATIONS

There is no dimension of the University which can or should be free of re-examination, but we cannot deal with all aspects at once. The Committee has isolated three areas of immediate, critical importance and recommends that task forces be organized to consider them. Some areas of additional concern are identified at the end of this report. These should be taken up as time permits and as we as a University are persuaded that the areas of prime concern have been resolved.

#### I: Modes of Inquiry

Concerned with giving alternative forms to the traditional concept of liberal arts and its adaptability to a more diverse student body. This task force will focus on such matters as formal educational programs, student and faculty exchanges and consortia, degree alternatives, continuing and community education, and more opportunities for work and intern experiences as part of the academic program.

#### II: Inter-College Relationships

Concerned with fostering closer intellectual and co-curricular ties among the four colleges of the University. The task force will examine ways to enrich each college's programs and to develop programs to encourage greater community involvement.

#### III: Designs for Time and Space

Concerned with examining how our use of time and space can better serve the University and the community through more flexible scheduling, more effective blocks of time for learning, more comfortable and attractive living and learning spaces, and easier access to Willamette by the community at large.

# WILLAMETTE ALUMNI SECTION



TAKE FIVE IN

## The Wallowa Mountains

and you will have  
a backpacking vacation  
you'll long remember.

### Alumni Day Commencement Weekend — May 10-12, 1974

#### SCHEDULE

#### FRIDAY, MAY 10

(Weekend accommodations available in University dormitories through Sunday night)

7:00 p.m. **Reunion - Class of 1954** Colonial House

#### SATURDAY, MAY 11

9:00 a.m.-Noon **Registration** University Center

**Friends of the Library Exhibit**  
**Bookstore Display**

9:45-10:45 a.m. **Willamette University Review-Preview** Waller Hall Auditorium

11:00 a.m. **Dedication Ceremonies** Sparks Center

Noon-1:30 p.m. **Reunion Luncheons**

Class of 1919 W.I.S.H.  
Class of 1924 Doney Hall  
Class of 1929 Illahe Hills C.C.  
Class of 1934 Pi Beta Phi  
Classes of 1944-47 Baxter Hall  
Class of 1949 Black Angus  
Classes of 1968-71 Ram Pub  
**Bearcat Comback** Cat Cavern

**Alumni Day Luncheon** Matthews Dining Room  
**Dr. Richard Gillis, speaker**

2:15-4:30 p.m. **Tour of Mission Mill Historical Area** Mission Mill

**Art and Craft Fair** Art Department  
(Alumni, Student & Faculty creations)

#### Alumathon

4:00-5:30 p.m. **No-Host Reception** Sparks Center  
5:30-6:30 p.m. **President's Reception** Randall's Chuckwagon  
6:45 p.m. **Alumni Banquet** U. Center Lobby  
**Dr. Carl Marcy, speaker** Bearcat Cavern

Distinguished Alumni Awards presented to  
Dr. Robert F. Anderson G38, Mrs. Robert F.  
(Betty) Anderson G70, W. Hayes Beall G32,  
Dr. J. David Bristow G49, and Howard R. Ennor G35

#### SUNDAY, MAY 12

9:30 a.m. **Continental Breakfast** University Center  
11:00 a.m. **Baccalaureate** Smith Auditorium  
**(Dr. Martin Marty, speaker)**

3:00 p.m. **Commencement** McCulloch Stadium  
**(Gov. Tom McCall, speaker)**

Five carefree days—Aug. 11-15—are yours to enjoy the splendor and wildlife of this beautiful area of Northeastern Oregon which has been compared to the Swiss Alps and High Sierras. Hike, fish, swim, camp, relax, and learn from tour leaders Don Breakey '50 and Don Baldwin. Dr. Breakey is chairman of the Willamette biology department and noted wildlife expert; Baldwin is the District Conservationist for the U.S. Soil Conservation Service at Enterprise.

The two Dons will escort 20 backpackers six miles up along the Lostine River to the base camp at Minam Lake. Packhorses will carry up the food and equipment, but you'll have to travel light enough to carry your own gear out (light tent, sleeping bag, eating utensils, etc.).

Short hikes to nearby lakes, streams and wilderness areas within a day of the base camp will be the daily fare, with plenty of time to scout birds and wildlife. A gondola ride up the Mt. Howard tramway is included in the excursions.

The encouragement to travel light extends to the wallet. The five days of splendor, including all meals, packhorse trip in, and gondola ride is offered through the Alumni Association Continuing Education program for **just \$40 per person**. Registration is limited to the first 20 to get \$10 deposits in to the Alumni Office. (Deadline July 1.) Total payment is due Aug. 1. Backpackers must be 16 years of age or older.

Don't miss out . . . send in your deposit today (checks University) to Alumni Office, Willamette University, Salem, OR 97301. Phone (503) 370-6356.

#### TAKE FIVE IN

#### The Wallowa Mountains

An Alumni Association Continuing Education Program Aug. 11-15, 1974

Please enclose this form with your check payable to Willamette University.

Number of persons \_\_\_\_\_ at \$10 deposit \_\_\_\_\_ (\$40 per persons due Aug. 1)

(please include names and ages of children)

Name(s) \_\_\_\_\_

Address \_\_\_\_\_

City \_\_\_\_\_ State \_\_\_\_\_ Zip \_\_\_\_\_ Phone \_\_\_\_\_



Betty Anderson



Robert Anderson



Hayes Beall



David Bristow



Howard Ennor

# 1974 ALUMNI CITATION RECIPIENTS

## ALUMNI CITATION RECIPIENTS

Five outstanding alumni of Willamette will receive Alumni Citation Awards in the 17th annual presentation ceremony at the banquet of Alumni Day May 11. Following are the brief profiles of recipients honored "for outstanding achievements and services which reflect honor upon Willamette University."

### BETTY STARR ANDERSON '40

Services to the community and cultural arts have been almost second nature to Betty Anderson, despite her protest "but I have just lived along doing nothing outstanding." Her neighbors of the greater Salem area would strongly disagree, however, as her leadership talents have been directed toward such organizations as YWCA (six-year member of Board of Directors), YMCA (Committee on Adult Program and Family Life), Yokefellow (West Coast Yokefellow Board), Oregon State Hospital (music therapy volunteer for 10 years), Cub Scouts (den mother for three years), Campfire Girls (Campfire Guardian for eight years and Bluebird leader), Marion-Polk Co. Medical Auxiliary (former President), Salem Mardi Gras Queen (1964), P.E.O. (three-time president locally and present recording secretary for the Oregon State Chapter), YWCA Teen-Mother Program (head tutor), Willamette University (Trustee), Mu Phi Epsilon and D.A.R. memberships, not to mention leadership roles in church. She was twice soloist in the Portland Symphonic Choir presentation of "The Messiah" and has been a frequently called soloist for many other programs. She earned her M.A. degree in counseling in 1968 from the U. of Oregon and is currently a certified counselor and teacher at the secondary level. All of this, plus the raising of four children belie her protest of "doing nothing outstanding."

### DR. ROBERT F. ANDERSON '38

The other half of the talented Anderson duo, Dr. Robert F. Anderson has a list of service to match that of his attractive wife Betty. A 1943 graduate of the University of Oregon Medical School, Dr. Anderson has been a practicing orthopedic surgeon in Salem ever since completing his internship at the Medical School and Shrine Hospitals in Portland. A member of six medical organizations, he is a past president of both the Marion-Polk Co. Medical Assn. and Salem Hospital Staff. Service to the YMCA has included President of the Board of Directors, President of the Northwest Area Council, member of the National Council and International Committee, and chairman of the marriage clinic for seven years. He has been a director of the Yokefellow Program at the Oregon State Penitentiary for five years and member of the West Coast and National Boards. Salem honored Dr. Anderson as its Junior First Citizen in 1962, and the local and area YMCA organizations have given him Distinguished Service Awards. He served as president of the Willamette Alumni Association in 1956 and has served as a guest lecturer at the College of Law. He has been on the Board of Elders at the First Presbyterian Church, and he shares the credit with Betty for raising four fine children.

### W. HAYES BEALL '32

A life devoted to service in government, education, church, health associations and conservation has appropriately earned Hayes Beall an Alumni Citation for humanitarian service. Following his graduation he earned an M.Div. at the Yale Divinity School before joining the youth staff of the National Board of Education for the Methodist Church. He served as Wesley Foundation director at the University of Oregon from 1936-39 while taking some graduate courses part-time. He was in government service from 1940-48 as the Asst. Chief of the Migratory Labor Camp

Program; senior examiner for the President's Committee on Fair Employment Practice; and Chief of Youth Activities in U.S. Zone of Germany. From 1948-67 he served as Director of Educational Services for the Cooperative League of USA. In 1967 he became Executive Director of the Kidney Foundation of Illinois and in 1970 the West Coast Regional Director of the National Kidney Foundation. He is currently a consultant to the Kidney Foundation and other health associations and editor of the Kidney Foundation newsletter for the 11 Western states. Other consultant work has been directed toward the U.N. Relief and Rehabilitation Admin. 1944-45, and the Peace Corps, 1963-66. Listed in Who's Who in Midwest and West, he has held three national offices: President, National Council of Methodist Youth (1934-37); Chairman of National Council of Student Christian Assns. (YMCA), 1933-35; and President of the National Council of Organizations for Adult Education (1960-61). In Salem, he is a member of the Community Conservations Committee and was elected as a delegate to the Democratic National Convention in 1972.

### DR. J. DAVID BRISTOW '49

Medical research, education and administration have greatly benefitted from the talents of Dr. J. David Bristow. Named professor of medicine at the University of Oregon Medical School in 1970, chairman of the Department of Medicine in 1971, Dr. Bristow now also occupies the Laurence Selling Chair of Medicine. A fellow or member of 13 different medical associations, Dr. Bristow is a frequent contributor to medical journals as attested by his 78 published articles in the fields of cardiac pathophysiology and clinical cardiology. With the exception of two leaves to serve at the University of California Medical School (1961-62) and the Radcliffe Infirmary at Oxford, England (1967-68), Dr. Bristow has been associated with his medical alma mater, the University of Oregon Medical School since

1959. He is on the research committee of the Oregon Heart Association and has been associated in service capacities with the American Heart Assn., National Heart Institute Projects, National Institutes of Health, Oregon Regional Primate Research Center, Western Journal of Medicine, Archives of Internal Medicine, and several other commissions and committees. He has been a great credit to Willamette University and specifically the department of biology.

### HOWARD R. ENNOR '35

The rapidly growing peaceful uses of atomic energy around the world are the day-to-day business of Howard R. Ennor, the distinguished director of budget and finance for the International Atomic Energy Agency in Vienna, Austria for the past 13 years. He is responsible for the \$25 million budget of the agency which is maintained by 104 nations to accelerate the peaceful uses of atomic energy. A German major at Willamette, Ennor earned his master's degree in international relations at the University of Chicago with an eye on foreign service. That opportunity didn't come immediately, but following work at the Bonneville Power Administration and while serving as budget director of the U.S. Atomic Energy Commission's Richland, Wash. headquarters he was offered the Vienna post in 1961. His knowledge of German, French, Spanish and some conversational Russian has been helpful in his work with the professional staff of 400 representing 60 of the member countries of the Agency. The Agency is autonomous, but related to the United Nations, particularly the U.N.'s Food and Agriculture Organization. During a recent visit to Salem Ennor said "the progress in worthwhile use of atomic energy has been very rapid." Three research laboratories are maintained in Europe and great effort is taken to safeguard and keep nuclear equipment intended for peaceful use out of military channels. One of Ennor's three children, Gary, is a 1969 Willamette graduate.

Last spring, Willamette alumni were invited to respond to a program development survey to assist the University and the Alumni Association Board of Directors in strengthening ties with all former students. More than 1,300 Alumni returned the questionnaires and the results have been used by the Alumni Association for the preparation of a Master Plan. In addition, appropriate information has also been shared with faculty and administrators.

The information gathered by the questionnaire was most interesting. More than half of the alumni who responded were between 21 and 40, a not too surprising statistic when one remembers that some 60% of the University's living alumni have graduated in the last quarter century. It was particularly pleasing, however, to have nearly 130 respondees from those of retirement age or older.

Of those who reported they were married, nearly two-thirds said that their spouse had not attended Willamette. And, some two-thirds of the respondees indicated present incomes of between \$10,000 and \$30,000.

It is obvious that education is still an important consideration to Willamette alumni. Slightly more than 83% said they had taken additional courses since leaving the University. More than half of these had taken their additional work at a larger public university.

Here are other results from the questionnaire with comments where appropriate on how this relates to the Alumni Association Master Plan:

#### UNIVERSITY TIES:

**Question: What do you feel is your strongest tie with Willamette?**

The University as a whole	527	(41.7%)
Your department	109	(8.6%)
Your class	307	(24.3%)
Fraternities and sororities	141	(11.2%)
Faculty/administration	113	(8.9%)
Other	66	(5.2%)

**Question: Do you feel well-informed about Willamette?**

Very	138	(10.6%)
Fairly well-informed	677	(51.8%)
Well informed	387	(29.6%)
Not informed	101	(7.7%)

**Question: What is your chief source of information about Willamette?**

University publications	1,061	(81.7%)
Friends	120	(9.2%)
Alumni activities	35	(2.7%)
Relatives	35	(2.7%)
Fraternities/sororities	14	(1.1%)
Others	30	(2.3%)

*The importance of proper communication with all former students is of continual concern to those in the campus University Relations office. Each year publications are evaluated and will continue to be so to be certain that everyone continues to be properly informed about campus activities.*

#### ALUMNI INVOLVEMENT IN UNIVERSITY AFFAIRS

**Question: Do you feel Alumni should donate time and services to Willamette?**

Yes	943	(84.6%)
No	156	(14.0%)

**Question: Should Alumni participate on University committees?**

Yes	742	(79.6%)
No	176	(18.9%)

#### THE ALUMNI ASSOCIATION

**Question: When did you first become aware of the Alumni Association?**

## Alumni Questionnaire Attracts 1,300 Responses

*The results have been incorporated into a Master Plan for the Alumni Association. Information and fund raising listed as major objects.*

As an undergraduate student	718	(56.9%)
At the time of graduation	113	(9.0%)
After graduation	427	(33.9%)

**Question: Do you feel a sufficient tie to Willamette through the Alumni Association?**

Yes	638	(52.6%)
No	557	(46.0%)

**Question: What should be the objectives of the Alumni Association? (Ranked in order of importance)**

Information; Fund-Raising; Continuing Education; Student Recruitment; Job Placement and Social.

**Question: Have you attended a Willamette Alumni function in the last five years?**

Yes	395	(30.9%)
No	883	(69.0%)

#### Geographical Programs

**Question: Would you participate in Willamette Alumni activities in your geographical area?**

Yes	755	(73.3%)
No	274	(26.7%)

*The respondees generally showed a preference for social and cultural programs at these geographical Willamette meetings. The Board of Directors has begun an effort to establish Willamette clubs in areas where there are concentrations of alumni. This year, there have been alumni meetings in Albany, Anchorage, Bend, Denver, Eugene, Honolulu, Los Angeles, Medford, Portland, Salem, San Francisco, San Jose and Seattle. In addition to these areas, programs are being planned in the future for San Diego and Washington, D.C. Out of several of this year's meetings, clubs are getting started. And, next year, both the Board and the Alumni Office will be putting a top priority on strengthening the club area of the Alumni program to guarantee continuing Willamette programs in at least these areas. The results of this questionnaire have been coded according to countries and states and can be used in developing geographical alumni programs.*

**Question: Would you be interested in participating in a study tour with Willamette faculty members as study leaders?**

Very interested	94	(7.6%)
Interested	324	(26.1%)
Little interest	335	(27.0%)
No interest	484	(38.9%)

**Question: Would you like to participate in the concentrated study of a timely topic at a one-week Summer Alumni College at Willamette?**

Very interested	103	(8.5%)
Interested	276	(22.7%)
Little interest	315	(25.9%)
No interest	520	(42.8%)

*Study tours and Alumni colleges have proven quite successful at a number of other universities. Response to this year's cooperative study tour with Lewis & Clark College to France and Italy was excellent. Similar programs, on a limited basis, will be offered in the future. In addition, there will be other small group sessions developed like the summer back packing program mentioned elsewhere in this issue of the Scene.*

#### REUNIONS

**Question: Do you prefer reunions of your class?**

Every five years	347	(31.9%)
Concurrently	277	(25.4%)
A combination	318	(29.2%)
Other	146	(13.4%)

*There has been a great deal of confusion over the reunion plan announced several years ago with its emphasis on concurrent reunions of classes in school at the same time. Believing the concurrent reunion idea to be an appealing one and at the same time recognizing the importance of five year reunions for classes, the Alumni Board has adopted a new reunion plan which combines both types of reunions. Henceforth classes wishing five-year reunions will be invited to do so in either the spring or fall of the year. Concurrent reunions will continue to be scheduled in the spring.*

#### FINANCIAL COMMITMENT

**Question: Should Alumni be asked to make financial contributions to the University?**

Yes	1,152	(93.7%)
No	66	(5.4%)

**Question: Have you ever made a gift of money to Willamette?**

Yes	990	(77.3%)
No	269	(21.0%)

**Question: Has your pattern of giving to Willamette changed in recent times?**

I give more often now	77	(6.7%)
I give less often now	137	(11.9%)
I give more money now	122	(10.6%)
I give less money now	54	(4.7%)
I give only for a specific purpose or activity now	94	(8.2%)
I've stopped giving now	136	(11.9%)
My giving pattern has not changed	527	(45.9%)

**Question: Which of the following best describes your reason for your most recent gift to Willamette?**

Special project	159	(16.1%)
Obligation to Higher Education	246	(24.9%)
Obligation to Alma Mater	496	(50.3%)
Tax Shelter	13	(1.3%)
Other	64	(6.5%)

*Nearly half the people considered unrestricted giving, as now done through the Alumni Loyalty Fund, to be the most important priority for their gift to the University. There were many others who regarded faculty salaries and teaching effectiveness to be equally as important. The Alumni Loyalty Fund has been an important source of support to the University over the years and will continue to be so.*

#### STRENGTHS OF A WILLAMETTE EDUCATION

*The most overwhelming response to this question concerned the individual contact with professors. The names of 42 individual members of the faculty were listed by the respondees, including 16 still active. The liberal arts curriculum and the small classes were also mentioned quite frequently. There were also many people who spoke of their lasting friendship with other students. Altogether, there were 64 different categories of strength indicated in the general areas of faculty, administration, educational program, student life and extracurricular activities and campus facilities.*

#### WEAKNESSES OF A WILLAMETTE EDUCATION

*As one would expect, the strength of being a small school also was reflected in some of the weaknesses. Most often mentioned weakness was the insufficient number and choice of classes offered. Many indicated a concern over the lack of placement services, a fact which the University is presently attempting to correct with the development of its career education program. Many people also mentioned the lack of diversity in the student population as being a weakness.*

*There were 41 respondees who said they were either too young to appreciate Willamette or had failed to take advantage of the University's strengths while they were here. And, 65 of the respondees did not list any weaknesses.*

*For those who might like to have them, the Alumni Office will be glad to supply you with the complete results of the entire questionnaire.*

*The Alumni Office anticipates that there will be many positive results coming from this questionnaire both for the present student body and for the Alumni Association program. To all who took the time to respond to the questionnaire, those of us at the University want to say, "Thank You."*

# CLASS NOTES

Jan McMillin, Editor

## 1908

**C. RUTH WHIPPLE** is living in Vancouver, Wash., where she resides in a trailer behind the home of a niece and her family.

## 1914

**GRACE EDGINGTON JORDAN**, wife of retired U.S. Senator and former Governor of Idaho Len B. Jordan, is living with her husband in Boise, Idaho, where she is an author/lecturer. Her most recent book is "The Unintentional Senator."

## 1915

**LOUISE BEAMAN VINCENT** lives in Tillamook, Ore. where she is retired.

## 1918

**MARY EYRE**, one of Salem's most respected and popular teachers for more than 40 years, recently received a distinguished service award at the annual Salem Area Chamber of Commerce awards banquet. Miss Eyre was cited for her many years of volunteer work on Salem civic, cultural, educational and recreational programs.

## 1920

**T. LELAND BROWN** (L) lives in em where is the department judge advocate for the American Legion. His son, **JACK BROWN** (L57), is the state commander of Oregon for the American Legion.

## 1921

**ROBERT C. STORY** and his wife **MARGARET BOWEN STORY** '23 have returned to the Pacific Northwest after living in Japan for two decades and Dallas, Texas the past two years. They are now living in

Seattle, Wash.

## 1927

**MYRTLE JENSEN MALCOM** is retired and living in Corvallis, Ore. **G. PAUL JOHNSTON** writes that he has retired from owning and managing an apartment house to "managing one small home." He lives in Salem.

**OMA EMMONS MACKIE** and her husband Bill have moved from their farm in Tangent, Ore., to Albany, Ore. They had lived in Tangent since 1931.

## 1927

**MAE TINDALL** has retired as Professor Emerita of Education at Bowling Green State University in Bowling Green, Ohio and moved to Carlsbad, New Mexico.

**EUGENIA BAKER ALLEN** is back in Seattle, Wash. after months of traveling to visit relatives and friends in Virginia, California and Oregon. She is retired.

## 1929

**ALVIN A. KURTZ** is retired and lives in Bellevue, Wash.

**ELSIE TUCKER LEWIS** and her husband the Rev. J. Thomas Lewis (retired) have moved to Magalia, Calif. to be nearer son and daughter and their families. They live in a planned community in the foothills of the Sierras in Northern California.

## 1930

**THE REV. HAROLD S. SHELLHART** retired at the annual conference of the Methodist Church after 42 years as a minister. Shellhart and his wife have been trailer traveling and wintering in Southern California near relatives. Their permanent home is in Portland.

**RUTH BURCH RENFROE** is a social worker at the Dammasch State Hospital in Wilsonville, Ore. She resides in Portland.

**JUDGE F. LESLIE MANKER** is a retired Superior Court Justice and lives in Santa Rosa, Calif.

## 1928

**VIRINIA MERLE CRITES RIGBY** (Mrs. George) has moved from the oldest state in the Union, Delaware, after 41 years and is now living in the newest state, Hawaii. She lives in a Methodist retirement home in Kaneohe and keeps up with her active work in AAUW.

## 1931

**RANCES L. and GRACE HENDERSON DEHARPPORT** have moved back to Salem after residing in Portland for 31 years. She has retired as a music specialist in the Portland Schools and Francis works for the Oregon Modular Homes Industry in Salem.

## 1932

**GEORGE and ALTA HARMER MELDRUM** '35 live in Angwin, Calif. where he is retired instructional dean of Napa College.

**VAN M. BATESON** is retired and lives in Fillmore, Calif.

## 1933

**DWIGHT B. ADAMS**, former business manager of Stanford University and more recently director of facilities planning, has retired. He lives in Stanford.

## 1934

**JOSEPH M. WHITE** now lives in Hogsburg, N.Y., where he teaches native Mohawk and Indian culture at the Simon River Central School.

**EUGENE L. SMITH** and his wife Idalene have moved from New York City to work in the United Methodist Church of Denville in the Jersey hill country. He recently resigned as Executive Secretary of the New York office of the World Council of Churches.

## 1935

**MARGARET WELLS KETTERINGHAM** is a retired librarian and resides with her husband William in San City, Calif.

**CAROL FLEMING MARKEE** retired last summer as assistant librarian at the Anchorage Branch Libraries in Alaska. After residing in Alaska for 16 years, she has moved with her husband to Ontario, Ore.

**NORMAN SPECK** is spending the year in extended travel within the United States after retiring from the U.S. Immigration Service as officer in charge. He lives in Fresno, Calif.

**HOWARD ENNOR** and his wife Lucille recently visited Salem on home leave from Vienna, Austria, where for the past 13 years he has been the director of budget and finance for the International Atomic Energy Agency. The Ennors have three grown children, living in the United States and their youngest daughter is a college student in Munich, Germany.

**FRANCES MAEDA** is the program secretary for the New York City office of the World Council of Churches. She has served in this position for 25 years.

## 1936

**THE REV. LEONARD S. CLARK** is in his 37th year as a minister in the Methodist Church; 25 years in the Idaho conference and 12 years in Nebraska. He resides in Eustis, Nebraska.

**JACK and NOVA HEDIN SIMPSON** '35 live in Anchorage, Alaska, where he is retired except for the summers when he drives a tour bus for American Sightseeing (Kneisel Travel of Portland.)

## 1937

**WARREN W. PETERS** and his family have moved from Fremont,

Calif. to Little River, where they are building their own "retirement home" and he is a part-time marriage counselor.

## 1938

**DALE T. CRABTREE** (L53) is an administration law judge in the Social Security office in Eugene.

**OTTO J. WILSON**, long-time Salem auto dealer, recently joined the staff of Associated Oregon Industries as member-relations director. Wilson had semi-retired last year after selling his business to Howard Trachsel of Portland.

**DR. HOWARD TEEPLE** is the executive director of the recently incorporated nonprofit organization, the Religion and Ethics Institute, Inc. in Evanston, Illinois.

## 1939

**DR. RAYNOR SMITH** recently transferred from the Central Methodist Church in Spokane, Wash. to the First Methodist Church in Astoria, Ore.

## 1940

**BAINE H. CATER** has retired, spending the summers in Anchorage, Alaska and the winters in Las Vegas, Nevada.

**ALFRED and ETHEL DENHAM TEBALTY** '40 reside in Seaside, Ore. He recently retired as the claims manager of the Safeco Insurance Company.

**DR. ROBERT E. KEUSCHER**

was recently appointed executive director for Associates for Developing Alternatives in Education, a Los Angeles, Calif. based educational consulting firm. Keuscher, who lives in Santa Monica, Calif. with his wife, also teaches a class each quarter for the UCLA Education Extension program.

## 1941

**DOROTHY PALMER KNOX** (Mrs. G. Kenneth) lives in San Francisco, Calif., where she works in lumber invoicing at the American Forest Products Corp.

**GERALDINE PARKER BROWN** resides with her husband in Memphis, Tennessee, where he is a municipal technical advisor for the University of Tennessee.

**STEPHEN C. MERGLER** lives in Mt. Vernon, Wash., where he is the publisher of Argus Publishing Company.

**JOHN KOLB** has retired as an official in the Pacific 8 Athletic Conference and is selling real estate in Salem, where he lives with his wife Jenny and three sons, Mike, Pat and Kelly.

## 1942

**MIGNON MACY PIKE** is the mother of three grown children and resides in Oregon City.

**COL. RALPH KIRCHOFF** is the general manager of the Boca Del Mar Golf and Tennis Club in Boca Raton, Florida.

**FLORA LEONARD STOLTZ** resides in Spokane, Wash., where her

husband James is the head librarian at Gonzaga University.

## 1944

**MARTHAL HUGHELL** continues to work in a mission hospital in Uganda with the Africa Inland Mission. She recently moved from Arua, Uganda to Private Bag, Kasese.

## 1945

**COL. ROBERT D. GARDNER** lives in Atwater, Calif. and serves in the U.S. Air Force at Castle, AFB.

**ROBERT D. and CATHERINE McKAY TAYLOR** '41 are living in Agana, Guam where he is a hospital administrator and director of the Mental Health Agency of the Guam Memorial Hospital.

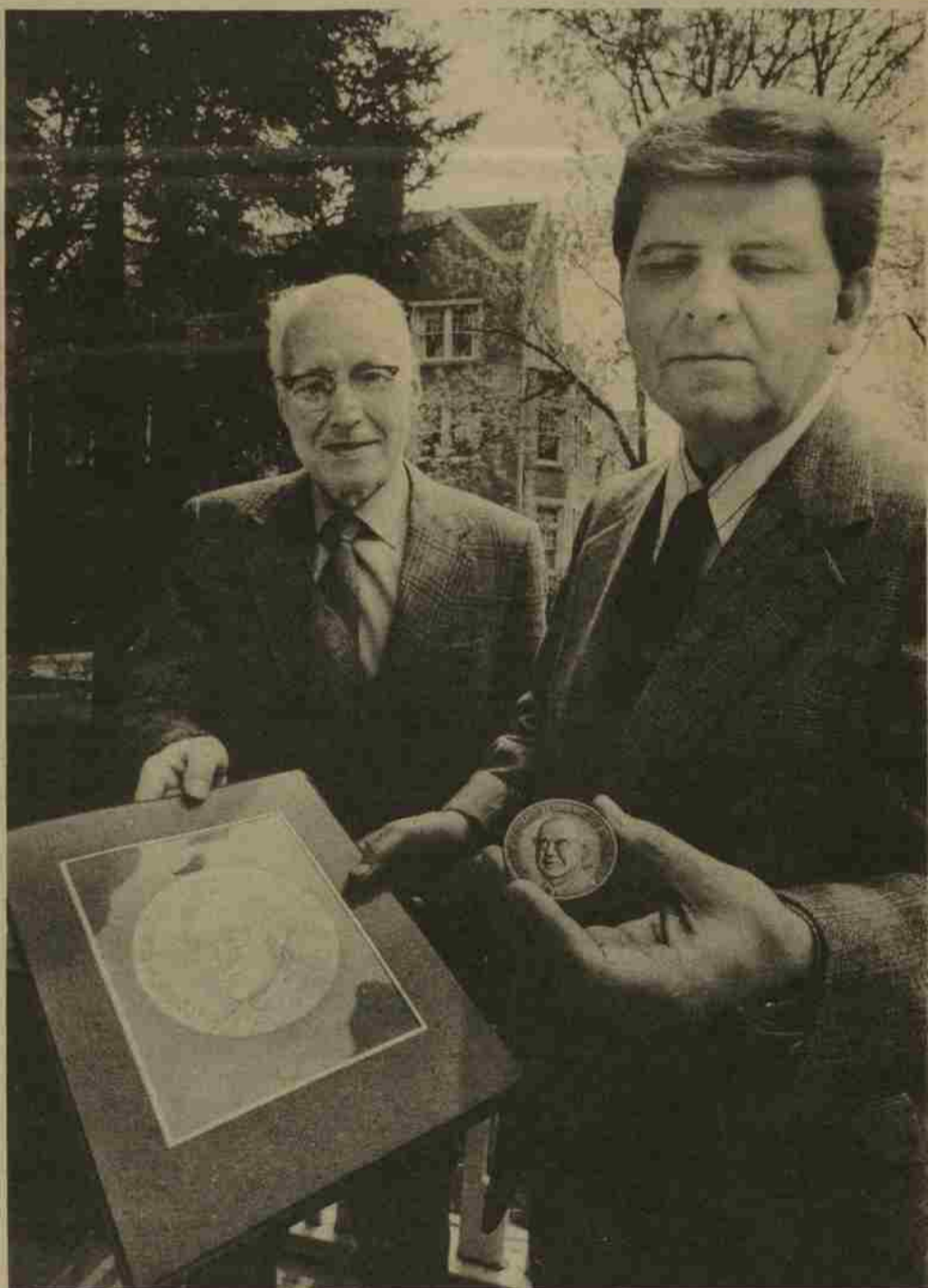
**TINKHAM and JUNE DIMOND HAIGHT** live in Oregon, where is the owner of Portland Honda. Their home is in Milwaukie, Ore.

## 1947

**ANITA STRICKLAND NYGAARD** lives in Lompoc, Calif. where she is a librarian at the Lompoc Museum.

**THE REV. HORACE and ZELLA ZINK MOUNTS** are residents of Seattle, Wash., where he is a minister at the Riverton Park United Methodist Church and she is a medical technologist at the Mason-Busteed Laboratory.

**MARIAN ERIKSON HOOD** is a choral director at Madrona Junior High in Edmonds, Wash. and resides



Eugene Lowe '49, chairman of the 25th reunion class, admires the Chester Luther medallion which will be presented to members of his class who return for Alumni Day May 11. Dr. Luther (left), professor emeritus of mathematics, will receive the first medallion. The James T. Matthews medallions will still be presented to the 50th anniversary class.



Scotty Washburn '50 (left) and Ernest F. Schmidt are congratulated by Billy Graham for receiving the Camping Movement's highest awards.

in Mountlake. She also sings with the Seattle Opera and the Sound Expression Theatre in Edmonds.

## 1948

**ROGER L. HANCOCK** is the owner-manager of the Arizona Millwork Company in Phoenix. He lives in Scottsdale, Ariz.

**DON and CAROL DIMOND HUNSAKER** '49 and their children Douglas, Bruce and Edna live in Richmond, Va., where he is the city auditor.

**PALMER G. LEE** is a probation officer in the U.S. Courts in Portland.

**DR. ALLAN VOIGT**, after a year of cardiology research at the University of Washington Medical School, has returned to California as medical consultant to the Department of Health, State of California. He resides in Sacramento.

**DR. DAVID D. GEDDES**, a resident of Beaumont, Texas, is the vice president for academic affairs at Lamar University.

## 1949



**MILT BAUM** has been appointed the associate superintendent of field services for the Oregon State Department of Education. He was formerly the director of the department's legal and accreditation services. Baum and his wife **MARJORIE LOUISE LUNDAHL BAUM** '49 live in Salem with their three children.

**WILLIAM E. STARK** is the traffic engineer for the City of Yakima, Wash. after working in the same position for 12 years for the City of Salem.

**MARTIN A. BARSTAD** (L) is the claims manager for Industrial Indemnity Company of Spokane, Wash.

## 1950

**DR. JOSEPH BRAZIE** is a pediatrician at the Denver Children's Hospital.

**BETTY DAHLBERG DVERSDAL** and her husband **NORM DVERSDAL** '55 live in Lake Oswego, Ore. He is the president of Nordic Enterprises in Woodburn.

**FRANK M. "SCOTTY" WASHBURN**, director of the YMCA Blue Ridge Assembly in Black Mountain, N.C., was recently presented with the American Camping Association's Distinguished Service Award at its 1974 National Convention in Atlanta, Ga. Washburn has been associated with the organized camp field for 36 years. The Rev. Billy Graham congratulated Washburn during the convention.

**ROGER and JOANN RICHARDSON ADAMS** '53 live in Redway, Calif. with their three daughters, now in high school. They also have a daughter and son in college. Adams is the superintendent of the Southern Humboldt County Unified School District.

**DELBERT and DORIS KIMBLE TILLOTSON** live in Mt. Vernon, Wash., where he is completing his 20th year at Skagit Valley College. Tillotson is a former business instructor and now dean of administrative services.

**MARGE COOPER FLECK** has moved with her family from Utah to Rockville, Maryland for a two-year stay. Fleck is the deputy coordinator of the senior seminar for the U.S. Foreign Service Office.

**CHARLES J. PATTERSON** has been elected vice president of corporate planning and development of Castle and Cooke Inc. of Honolulu, Hawaii.

**COWELL H. BARNSTABLE** is a salesman for Larwin Developments, Inc. of Santa Clara, Calif.

**PETER (L) and EDITH FAIRHAM GUNNAR** '49 live in Lake Oswego, Ore., where she teaches vocal and general music at River Grove Elementary. Gunnar practices law in Portland.

## 1951

**COL. JEFFREY R. McDUGALL** is presently stationed at Osan Air Base in Korea as director of personnel, 314th Air Division and base director of personnel, 51st Air Base Wing.

**SALLY SMITH GUNN** is working in value clarification in a special program in Atlanta, Ga. schools. Her four children and husband George live in Atlanta, where he is a higher education specialist with the General Executive Board of the Presbyterian Church.

**BILL A. LIDTKE** is the new manager of the Lancaster-Silverton Road branch bank of the First National Bank of Oregon in Salem.

**DR. ESTHER WEINSTEIN** is the president of Shimer College in Mount Carroll, Illinois.

## 1952

**WALLACE and MARY ELLEN PHILLIPS SNYDER** '53 are residents of Golden, Colo. He is the assistant vice president of Blue Cross/Blue Shield in Denver.

**LORNA JOHANNABER McMANIGILL** lives in La Canada, Calif. with her family.

**DR. ROBERT B. KAPLAN**, Palos Verdes, Calif., has been named associate dean in the University of Southern California's College of Continuing Education. Kaplan, a world-recognized authority on the teaching of English to speakers of other languages, was formerly the director of USC's English Communication Program for Foreign Students.

## 1953

**GRACE CONNELL SCOTT** lives with her family in Fayetteville, N.Y. Her husband **Elton** has taken a leave of absence from West Virginia University and is a consulting scientist for General Electric Company in Syracuse, N.Y.

**DON E. ROSE** is a sales representative for the Oregon Portland Cement Company, working in Eugene.

**GEORGE E. PORTER** is the assistant corporate controller for Evans Products in Portland.

**JAMES F. GAY** teaches at Parkrose Senior High School in Portland, where he is the senior class advisor.

## 1954

**MALCOLM I. CAMPBELL** is a sales and life insurance advisor for the Employees of Wausau in Portland.

**THE REV. STUART SHAW** is a minister with the United Methodist Church in St. Helens, Ore.

**JUDGE ALAN R. HALLOWELL** (L56) is a Superior Court Judge in Kelso, Wash.

**PHOEBE ELIZABETH WILSON CORTESSIS** recently received a master of arts in education from Chapman College in Orange, Calif.

## 1955

**MARILYN WITHAM PLATT** has moved to Sunriver, Ore., where her husband is the sales manager for Sunriver Properties.

**BARBARA SLOAN SMITH** and her husband Barry are returning to their home in Palos Verdes, Calif. after two years in Massachusetts while he was associated with MIT Lincoln Labs. She is a volunteer with the Easter Seal Society.

**DR. DONALD W. BERNEY** is assistant professor of political science at Radford College, Va., where he is the director of the newly-approved criminal justice program.

**ROBERT W. RIGHTER** is an assistant professor of history at the University of Wyoming in Laramie.

**DONALD M. GRAGG, M.D.** recently completed a program leading to a Ph.D. in higher education—Medical Education at Michigan State University. He is a physician at the Naval Medical Training Institute in Bethesda, Md.

**JACQUE MEADOWS SHAW** lives in Berkeley, Calif., where she is studying for her master's degree of divinity at Pacific School of Religion.

**THE REV. TOM WHITEHEAD**, formerly of Anchorage, Alaska, has been named superintendent of the Eastern District of the Oregon-Idaho Annual Conference of the United Methodist Church.

**DAVID W. CORTHELL**, an associate professor at the University of Wisconsin, is the director of training at the University's Research and Training Center. He resides in Minnomic, Wisconsin.

**LT. COL. ROBERT DYER**, his wife Carol and four children are now living in Abilene, Texas, where he is assigned to Dyess AFB, Texas as chief of the personnel division.



**DAVID R. JACKSON** was recently promoted to vice president and trust officer of The Bank of California. Jackson, his wife Martine and two children are residents of Walnut Creek, Calif.

## 1956

**MARCIA NEWLAND LOVELAND** lives on Bainbridge Island, Wash., where she is a mother and wife. Before moving to Washington, she was a substitute elementary teacher in Nevada.

**CECIL G. WEAVER** is the office manager of the Mountain Fir Lumber Company, Inc. in Tygh Valley, Ore.

**LT. COL. ROBERT C. MILLER** is in the U.S. Air Force, stationed at Shaw AFB, S.C.

**RONALD BUTLER** is an attorney with the Orange County Public Defender's Office in Santa Ana, Calif. He resides in Anaheim, Calif.

**CLARINE WOOLERY HARP** has left teaching to raise four children on a 50-acre farm in Independence, Ore.



**COL. WILLARD K. CAREY (L)** of LaGrande, Ore. is the new commander of the Oregon 41st Infantry Brigade.

**GERALD H. KANGAS**, recently general manager of the First National City Bank (New York) Fiji Island branches, is the new resident vice president.

**MAJOR RICHARD P. ROHRER** has been presented a Military Airlift Command safe flying award at McChord AFB, Wash. in recognition of his 5,000 hours of accident-free flying.

## 1957

**JEAN WHITESIDE CONRAD** resides in Reno, Nevada with her family and husband, who is the minister of St. Paul's United Methodist Church. Mrs. Conrad was recently elected to the board of directors of The Center for Religion and Life at the University of Nevada.

**BENJAMIN J. DOERKSEN** is a funeral director in Salem.

**JOANNE JENE, M.D.**, a Portland physician, recently spent two months of volunteer service aboard the S.S. HOPE in northeast Brazil.

## 1958

**DR. EUGENE COREY** is an associate professor of chemistry at the University of Missouri in St. Louis.

**FRED M. BUTLER** is project manager for the Guy F. Atkinson Company in Albuquerque, N.M.

**DON MILLER** has been appointed Coordinator of Educational Services for the State of Oregon, Children's Services Division. Miller, his wife Nancy and three children continue to live in Lake Oswego, Ore.

**DR. MATTHEW H. HILL**, a doctor at the University of Waterloo, Ontario, Canada, is currently in Gambia, Africa.

## 1959

**GAIL BEYER BROWN** is the office manager of the Constitution Mint in Provo, Utah. She lives in Orem, Utah.

**BOB and BARBARA ROACH GRIFFIN** have moved to a Minneapolis suburb, Plymouth, after 11 years in Richland, Wash. Griffin is the nuclear engineer program manager

for Medtronic, Inc.

**JANET COOPER SIPE** is a housewife, living in Eugene, Ore.

**PETER J. MURRAY** is chairman of the mathematics department at St. Martin's College in Olympia, Wash.

## 1959

**NORMAN and TONI FOLSOM DYER** '60 live in Idaho Falls, Idaho, where he is a senior physicist at the Aerojet Nuclear Company. He received his Ph.D. in physics from Vanderbilt University in Nashville, Tennessee in 1972.

**DR. ALBERT ZAVALA**, formerly head of life sciences at the Calspan Corporation, has been appointed executive director of Mental Health Services—Erie County Corporation IV. Zavala, his wife **LAUREL BLYE ZAVALA** '61 and four daughters live in Buffalo, N.Y.



**CESAR J. BALMASEDA** is the new managing director of Firestone Portuguesa, in Alcochete, Portugal. He has been managing director of C. A. Firestone Venezolana in Valencia, Venezuela, for the past two years.

## 1960

**NEIL A. BENNETT (L)** is the compliance director for Pacific Stock Exchange in Los Angeles, Calif. He lives in Whittier, Calif.

**DR. TED and VIRGINIA GRANT COOK** live in Spokane, Wash., where he is an otolaryngologist at the Spokane Ear, Nose and Throat Clinic.

**LAURENCE R. CHANDOS** is the president of Motivational Marketing by Chandos, Inc. in Lake Oswego, Ore.

**MAJOR RONALD P. JOHNSON** is stationed in Weisbaden, Germany with the U.S. Air Force.

**JAMES W. LEWIS** has moved his family East for a 12-month "vacation" while he works as general manager of the U.S. Datacorp in New York City. They live in Westfield, N.J.

**ROSS G. STEPHEN** is the acquisitions librarian at Harper College in Palatine, Illinois.

**TOMMY L. WESTON** is the manager of the Data Processing Center in Danville, Calif.

**LTC RONALD E. WALKER** is an orthopedic resident at Wilford Hall Medical Center in San Antonio, Tex. He is a physician in the U.S. Air Force.

**DR. FURM and SALLY A. OLMSCHEID DUNCAN** '60 have moved from Beaverton, Ore. to Longview, Wash., where he has opened a new practice in Obstetrics and gynecology.

## 1961

**GERALD J. MARSH** is an insurance underwriter for the National Public Insurance Company in Seattle, Wash. He lives in Bothell, Calif.

**MIKE FIGOUR** is an architectural consultant for McGraw-Hill of San Francisco. He lives in San Anselmo, Calif.

**WILLIAM W. MOORE** is a civil engineer and partner in the firm of Dames and Moore in New Malden, Surrey, England.

**JAMES G. McCLAIN (L)** is a chief deputy with the Multnomah County District Attorney's Office in Portland.

**LAWRENCE M. PAQUIN** is the teacher/principal of the BIA School in Shageluk, Alaska.

**LARRY L. SCHMIDT** is a pilot with United Air Lines with a home base in Santa Rosa, Calif.

**GARY L. HOLLEN** is the assistant basketball coach at Jesuit High School in Beaverton, Ore.

**MAJOR LARRY D. THOMPSON** is in the U.S. Air Force, stationed in San Bernardino, Calif.

**HENRIETTA NICKELS SHIRK** recently completed her Ph.D. in English literature and middle English at Bryn Mawr College, Pennsylvania. Dr. Shirk is currently at home in Newberg, Ore., where she works as a free-lance editor and raises Abyssinian show cats.

## 1962

**HUGH D. STITES, JR.** is an analyst for 3-M in St. Paul, Minnesota.

**REBECCA BROWN RICHARDSON** has retired as a microbiologist for Multnomah County and is at home on 15 acres near Canby, Ore.

**ROBERT J. HERBERGER** is a district work experience planner for the Salem Public Schools.

**CARL A. WILLIAMS** is a hospital administrator for the Kaiser Foundation in La Mesa, Calif.

**ARTHUR J. ELLIS** has received his Ed. D. degree from the University of Northern Colorado and is now the curriculum director for the U.S.P. Goodland Schools in Goodland, Kansas.

**DAVID E. MARSTERS** is a teacher in the Seattle, Wash. area.

**STEPHEN E. MURDOCK** is a captain in the U.S. Air Force, stationed in Highland, Calif.

**ROBERT (L65) and JANICE TWING BALL** spent 1972 traveling in a VW camper throughout Europe and are now living in Chicago, where he is an assistant public defender for Cook County, dealing in child abuse. She is an employment counselor for the Illinois State Employment Service.

**FRANK D. KNIGHT (L)**, former Benton County district attorney, has been appointed a new circuit judge. His new post is in the 21st Judicial District covering Linn and Benton counties. He resides in Corvallis.

## 1963

**DAVID A. BEATON** is research coordinator for the State of Oregon's Energy Study. He works and resides in Salem.

**KAREN STONE TERNINKO** is program manager of the Head Start Supplementary Training program at the University of New Hampshire in Durham. She also is a partner in New Dynamics Association, a consulting firm specializing in organizational development and the effects of sex-role stereotyping on individual behavior. She lives in Dover, N.H.

**THE REV. JOHN T. BAKER** is the director of student activities at Ohlone Junior College in Fremont, Calif. He resides in Newark.

**DR. WILLIAM H. BUSH, JR.** has a fellowship in radiology and is in Hamburg, Germany.

**GEOFFREY RUTKOWSKI**, cellist and associate professor at UCSB, recently returned from a tour of the Orient, under sponsorship of the U.S. Information Service. He will take a sabbatical next year to perform all over Europe and then return for the spring concert.

**CAPTAIN RICHARD F. LORD**, USAF, who for the past two seasons has served as an USAF/Royal Air Force Exchange pilot flying with the Red Pelicans, authored a recent article on the RAF aerobatic team in the "Air Force" magazine. The four-page spread included pictures of Lord and the other Red Pelican members.

## 1964

**DR. GARY A. BERGERON** is a cardiology fellow at the Harvard-Peter Bent Brigham Hospital in Boston, Mass.

**DR. C. JEANNE PERINS** is a lecturer at California State University at Chico.

**DR. JIM L. DIXON** and his wife Eva and three children are living in

Bremerton, Wash., where he has a dental practice. He is a graduate of the University of Oregon Dental School.

**RUSSELL C. OLMO** is a real estate salesman for Holly Development Company in Elko, Nevada.

**ALAN and SHARON PAULSEN BEARDSLEY** live in Kodiak, Alaska, where he has assumed the position of director of NMFS Kodiak Laboratory after five years with the same federal organization in Seattle, Wash.

**CAROL KITCHEN ADAMS** and her husband Steve live in Renton, Wash. He was recently transferred to the J. C. Penneys in Seattle, Wash.

## 1965

**DONALD H. BALDWIN** is a student and teaching assistant in the Department of English at Portland State University.

**WILLIAM B. WEBBER JR.** and his wife Cathy are back in the United States following a three-month tour of Africa. Webber, who works in solid waste management for the Sanitary Engineering Association in Winchester, Mass., and his wife plan to move to Oregon this year.

**DENNIS R. WONG** is a psychiatric social worker for the Multnomah County Juvenile Court in Portland.

**DR. J. KIRK McNEIL** has his own veterinarian clinic in Portland.

**DAVID L. FAIRBROOK** is the staff physician for the Washington State Veterans Home in Renton, Wash.

**R. LAIR WELCH** is a salesman for Boise Cascade in Salem. He lives in Portland.

**WILLIAM F. JACKSON** is a parole officer for the Corrections Division of the State of Oregon. He lives in Ellavaukie.

**CAROL J. BROWN** is a sales agent at the Hawaii desk of Pan American in San Francisco. She lives in Sausalito, Calif.

**DALE (L69) and ADELAIDE HULL HERMANN** have moved to Portland after Hermann completed four years active duty as a judge advocate in the U.S. Air Force. He is now an associate with the law firm of Phillips, Coughlin, Buell, Stoloff and Black.

**DR. RICHARD and SUSAN JOHNSON HARPER** '67 live in Indiana, where he is the senior organic chemist for Eli Lilly and Company in Greenfield. The Harpers live in Indianapolis.

**JOHN W. PICKERING** is an assistant forest engineer for MacMillan Bloedel of British Columbia, Canada.

**JOHN and KAREN NELSON MITCHELL** live in St. Helena, Calif., where he is the business manager of the Burgess Wine Company.

**DAVID L. BORTFELD** is the owner of the retail lumber and hardware company, Broadway Lumber of Sonoma, Calif.

**ROGER K. KIRCHNER**, who is selling insurance for Ohio National Life Insurance, recently played the role of the villain, Gideon Bloodgood, in the Pentacle Theatre performance of "The Streets of New York."

**WALTER C. JAMESON** is the assistant personnel manager for the Oregon Steel Mills in Portland. He lives in Aloha.

**B. HUNTER DIXON** is the sales representative for the Northwest Orient Airlines in Washington, D.C. He resides in Central Point, Ore.

**TERRI MITCHELL STEWART** and her husband **KENNETH B. STEWART** (L67) live in Milwaukie, Ore., where she is a housewife. He is a deputy district attorney for Clackamas County.

**DIANA GENTRY VAN EATON** is a first year law student at Northwestern School of Law, Lewis and Clark College, Portland.

**DR. THOMAS E. GLASS** is the assistant dean of the College of Education at the University of Detroit in Detroit, Mich.

**ROBERT and MARILYN VIKEN BLODGET** '66 are residents of San Luis Obispo, Calif., where he is an instructor in the education department at Cal Poly State University. Blodget has been hired to develop a new credential program leading to a master's degree in Early Childhood Education.

**ANNE ERIKSEN WARD** is living with her husband Nick in Seoul, Korea, where he is the general controller for the Seoul plant of Fairchild Camera and Instrument Company.

**HENDERSON MCINTYRE** is a

medical student at the University of Utah.

**SHARON SCHROEDER LORD** is a data processing supervisor for Seidman and Seidman in Beverly Hills, Calif.

**MARC J. ANDERSON** is an Oregon State Policeman, living in Springfield, Ore.

**MARTY SNEARY DEAHL** recently co-authored an article with her husband, which appeared in the October issue of "Instructor." The Deahls reside in Grand Rapids, Mich.

**JAMES D. CHURCH** recently received a J.D. degree from the Lewis and Clark Northwestern School of Law in Portland.

**YUKI MIZUTA** is a foreign exchange officer with the Mitsubishi Bank New York Agency in New York City. Mizuta, his wife Takako and three children reside there.



**ALEX J. MANDL** and his wife **NANCY SCOTT MANDL** '67 live in Boise, Idaho where he is the newly-elected assistant treasurer of the Boise Cascade Corporation.

## 1966

**DOUGLAS C. BAMFORD** is the national advertising manager for Farrell's Ice Cream Parlours in Portland.

**STEPHEN R. DITEWIG** is the supervisor of paper machine planning for Crown Zellerbach in Wauna, Ore. He lives in Clatskanie.

**JOAN W. GARDNER** is a stenographer-typist for the United Methodist Church Board of World Mission in New York City, N.Y.

**JAMES R. DYKE (L)** has resigned his position as federal estate tax attorney to accept work with the private law firm of Neumiller, Beardslee, Siegert, Glahn, Shepherd and Greene in Stockton, Calif.

**JOHN R. HENRIKSEN (L70)** is a lieutenant in the JAG Corps of the U.S. Navy, stationed in San Diego, Calif.

**JON PUTNAM** is the audio-visual director of the New York City J.C.

Penney Company. He lives in Greenwich, Conn.

**JAMES M. OTT** is a faculty member in the business department of Boise State College, Boise, Idaho.

**WILLIAM F. COMER** is a graduate teaching assistant at the Oregon State University School of Pharmacy in Corvallis.

**SAMUEL and ANDREA BRISTOL NEBEL JR.** live in Portland, where he is a social service worker in the Children's Services Division.

**STEPHEN H. CARPENTER** is the executive director of Parks and Recreation for the Pekin Park District in Pekin, Ill. His district includes 2,000 acres of park land with \$1,300,000 annual budget.

**NELLIE L. BEAL** is a Fairview liaison worker for the Marion Branch Welfare Department in Salem.

**KENNETH R. SOLBECK** is a loan officer for the Citizens Valley Bank in Independence, Ore.

**BARBARA WHALIN OLSEN** is a housewife and tutor in Ft. Lauderdale, Florida where her husband is the supervising teacher at the Ft. Lauderdale Oral School for the Deaf.

**SHERMA COOK** recently returned to her home in San Jose, Calif. after a month in the Orient. She is the assistant manager for Consumers Distributing Company in Mt. View, Calif. and during her free time takes a correspondence course in interior decorating... making rugs and wall-hangings for a decorator gallery in the Sierra Nevada mountains.

**GARRETT B. VAN HORN** is a manpower economist for the Manpower Administration in Seattle, Wash.

**KAREN B. EVANS** is a registered nurse at the Marin General Hospital in Greenbrae, Calif.

**BRUCE A. ANDERSON** is an institutional trader for Merrill-Lynch in Los Angeles, Calif.

**CAROLYN SULLIVAN CHURCH** is a professor of English at the University of Hawaii in Honolulu.

**DR. KENNETH and MARY ANNE DORSCH ROST** reside in Baker, Ore., where he is a physician with Baker Clinic.

**JANEE E. SPEIGHT** is teaching art at Waldo Junior High School in Salem. She lives in Aumsville.

**MICHAEL and MARILYN LUTHER EGANS** '67 just returned from two years in Alaska and are living in Portland, where he is a resident in Ear, Nose and Throat at the University of Oregon Medical School.

**MARY DEE STITHEN MCCANN** recently moved from Kennewick, Wash. to Vancouver, Wash. with her husband who was promoted as sales representative for U.S. Gypsum. In Kennewick, Mary Dee worked as a teacher's aide in the business education area of one of the high schools.

**KIRK ANN NEIL** is a stewardess for United Airlines, based in Seattle, Wash.

**LARRY and KATHLEEN BEN-DIX LEIBENOW** reside in Mexico City, Mexico where she is a housewife and he is helping to set-up a new synthetic fiber plant.

**MICHAEL R. GENNA** of Bend has been named district attorney for Jefferson County following the resignation of **RICHARD E. FORCUM** L64.

**CAPTAIN STEPHEN LONG** recently spoke on the Willamette campus about his four years' experience as a prisoner of war. He is presently stationed in Montgomery, Alabama.

## 1967

**WILLIAM OTT** has received a MBA degree from the United States International University and finished course work in England, spending the summer in Europe. He is a stock broker with E. F. Hutton in Denver, Colorado.

**LOREN F. WHITTAKER** is a pilot in the U.S. Air Force, stationed in Fairborn, Ohio.

**GERALD G. WATSON** is an assistant professor of political science at the University of Northern Colorado in Greeley.

**GEORGE L. HANSETH** is an institutional salesman (equities) for White, Weld and Company in San Francisco, Calif.

**GAY LEIGH GLENN CAMP** and her husband Denis have moved to Denver, Colo., where he accepted a promotion as operations manager for IBM.

**RAYMOND T. LOYD** is a teaching assistant in the German department at the University of Virginia.

**JEFFREY A. ARONSON** is a graphic designer in Seattle, Wash.

**ALVIN S. FUSE** is a resident in internal medicine at St. Mary's Hospital in Long Beach, Calif.

**SCOTT M. CRAWFORD** is a student at Barber College in Los Angeles, Calif.

**OWEN and PEGGY SHAFFER WHITE** '68 live in Kent, Wash., where she teaches math at Kirkland Junior High School. White is the coordinator of planning and evaluation of the Experimental Education Unit of the University of Washington.

**SHIRLEY A. COFFIELD** is a law student at George Washington University in Washington, D.C.

**RICHARD W. BUCK** is the New England day supervisor for the Associated Press in Boston, Mass. He lives in Braintree.

**GAIL V. GLASSMAN HANSON** has taught physical education at the Thora B. Gardner Junior High School in Oregon City, Ore. and is currently on a year's leave of absence.

**PATRICK M. ARMSTRONG** is the wilderness supervisor for Inyo National Forest in Bishop, Calif.

**STEVEN C. GRAY** teaches at Dana Gray School in Ft. Bragg, Calif.

**MURIEL J. KRAMER NELSON** (Mrs. James) is an elementary vocal music specialist in the Tacoma Public Schools. The Nelsons live in Seattle.

**JUDITH HARDING PRICE** is a reservist for Alaska Airlines in Seattle, Wash. She lives in Kent.

**TOM L. and VIRGINIA PAYNE SPONSER** are in London, England for a year while he studies for his LL.M. at the London School of Economics and Political Science.

**KENNETH SOLBERG**, after a year's absence for studies, has returned to Saint Mary's College in Winona, Minnesota as a part-time instructor in psychology. Solberg and his wife Marilyn live in La Moille.

## 1968

**RONALD T. BANTA (L)** is the district attorney of Lyon County and the assistant district attorney of Carson City in Yountville, Nevada. He is a resident of Gardnerville.

**FREDERICK J. AMUNDSON (L)** is an attorney with the law firm of Blackhurst, Hornecker and Hassen in Medford.

**STEPHEN S. HENIGSON (L71)** works for the Health, Education and Welfare Department of the Federal Government in Washington, D.C.

**ROBERT C. MILLIKAN (L71)** is the assistant public defender of Douglas County, working in Roseburg. Millikan, his wife Marni and daughter Kimberly reside there.

**ANN WHITING SPARKS** is a legal secretary for the firm of Martin and Landon in Seattle, Wash.

**NANCY IRWIN SCOTT and RODNEY SCOTT** '69 live in Stockton, Calif., where he is an operations officer with Bank of America.

**DR. NORMAN P. HUNTER** has a general practice in Bandon, Ore.

**SAMUEL P. FELIX** is an auditor with Arthur Andersen of San Francisco, Calif. He lives in Woodside.

**JANE C. HILL** teaches the third grade in San Francisco, Calif.

**ROBERT R. RIENSCHKE** is a carpenter, helping to build three duplexes in the Sequim, Wash. area.

**THOMAS O. BRANFORD (L73)** is a deputy district attorney in Lincoln County, Newport, Ore.

**LT. RICHARD A. MONTEITH** is a law student at Creighton University in Omaha, Nebraska. A lieutenant in the U.S. Navy, Monteith will practice law in the Judge Advocate General's Corps of the Navy upon graduation in May, 1976. Monteith and his wife Nancy have two children.

**RONALD and NANCY DEGRAW HOEVET** '68 live in Durham, North Carolina, where she is a secretary for the department of economics at Duke University and he is a second year law student at Duke University School of Law.

**PHILIP M. ROBERTS (L)** is an attorney and coordinator of the Oregon District Attorney's Association. He lives in Salem.

**MARK W. OLSON, M.D.** is a general medical officer in the department of obstetrics and gynecology at the Whidbey Island Naval Hospital. He lives in Oak Harbor, Wash.

**MARY MOORE BRYSON** is now living in Eugene with her daughter and husband **MELVIN BRYSON** '69 following a two year military service stint at Ft. Knox, Ky. Bryson is now into private practice as a dentist in Eugene.

**SUSAN KARR COOK** has moved to New York City with her husband Bill, who is an assistant professor of German at Columbia University. She is a publisher's representative for Newbury House Publishers.

**THE REV. DONALD G. BROWN** is an associate rector for the Christ Episcopal Church in Lake Oswego, Ore.

**RENDA K. BRUMMELL ROUMAGOUX** is studying on a fellowship at Eastern Washington State College at Cheney.

**GARY L. HERTZOG** teaches physical education and is the head coach for football and wrestling at Gervais High School, Ore.

**RODNEY L. ALLISON** is a management trainee in the Mortgage Bancorporation in Salem.

**KENNETH F. FUKUNAGA**, who received his J.D. degree from the University of San Francisco School of Law in 1973, is a doctoral candidate in psychology at the University of Hawaii in Honolulu.

**ALLAN B. GARD** is in advertising with the firm of Seller, Ferliti, Lyman and Wells of Portland. He lives in Gresham.

**PETER H. WALLMARK** is a sales representative with Jantzen, Inc. of St. Louis, Mo.

**JANET BELL deVRIES** is a housewife and chief of "Devries and Associates" of Portland.

**MIKE CALLAN**, his wife Bonnie and son Trevor live in Anaheim Hills, Calif. He is the eastern account executive with Sunset Magazine in Los Angeles.

**MARILYN MONTGOMERY** is a marketing support representative with IBM in Orange, Ca. She resides in Costa Mesa, Calif.

**PETER E. HARMON** lives in Salt Lake City, Utah where he is employed by the freight sales department of the Southern Pacific Company. He has purchased an old house and is renovating it.

**GARY WARREN YUNKER** recently received a Doctor of Philosophy degree from Southern Illinois University-Carbondale.

**HAUKUR HAZEN** is out of the U.S. Air Force after spending the He plans to travel but lists Sunnyvale, Calif. as his home.

**V'ELLA WARREN** is currently serving as the program coordinator for Hanover WISE, women's information service for women by women in New Hampshire. She lives in Hanover, where the service originated.

**PETE and RHONDA JAMES CARLSON** have moved back to the West Coast, where Carlson has been promoted to Chief of Case Management for the new Federal Youth Center in Pleasanton, Calif. This facility opened this month and is a co-ed facility of the U.S. Dept. of Justice.

**SUSAN J. CORCORAN** has been assigned by the First National City Bank to its head office in Ecuador as an executive trainee in the corporate banking group. She recently completed six months training in New York and arrived in Quito in September.

She anticipates a stay of two to four years in Ecuador.

**STANLEY D. HEISLER**, an attorney in The Dalles, Ore., has been appointed by President Nixon to the President's Air Quality Advisory Board. Heisler, a member of the firm of Heisler and Van Valkenburgh, was appointed to a three-year term.

**ROBERT E. YOUNG** has received a Doctor of Juris Prudence degree from the Lewis and Clark Northwestern School of Law in Portland.

## 1969

**KEITH J. BAUER (L)** has joined the law firm of Rhoten, Rhoten and Speerstra in Salem. Bauer and wife Madge live in Salem.

**ROBERT C. MOBERG (L73)** has been appointed a deputy district attorney in the Marion County District Attorney's Office in Salem.

**MICHAEL D. CALLAHAN (L73)** has joined the staff of the Marion County District Attorney's Office in Salem. Callahan and wife Elizabeth live in Salem.

**BILL LEBOV (L)** is a deputy public defender for Yolo County in Davis, Calif.

**STAN BUNN (L73)** a state representative in the Oregon Legislature, has opened a new law practice in Newberg, Ore. He is a resident of Dayton, Ore.

**GREG and NANCY HOCHSTETLER HURLBURT** have moved from California to Oregon, where he has returned to Portland State University following his discharge from the U.S. Air Force. He plans to complete work toward a second degree in accounting while at the same time, working for his master's degree in business administration. Nancy has completed two years of teaching sixth grade in Riverside, Calif. and hopes to find a teaching position in the Portland area. They are residing in Beaverton.

**JAMES ORIS GEORGE** has received his master of arts degree in administration from Chapman College in Orange, Calif.

**LLOYD and LOIS GIELOW CONNORS** are living in San Mateo, Calif., where she is an instructional music aide in the San Mateo Elementary Schools and he is head of the math department at Half Moon Bay High School.

**DONNA M. FREEMAN** is a research receptionist for Alfred A. Knopf Publishing Company in New York City.

**DEAN M. QUICK (L)** recently completed four years in the Judge Advocate General's Corps, U.S. Navy and is now an associate with the law firm of Bick, Monte and Joseph in Eugene, Ore.

**RICHARD P. KRAFT** has left Salem for Costa Rica to buy some land and raise cattle.

**TERRANCE A. HALL (L73)** is an associate with Robert H. McSweeney's law firm in Hillsboro, Ore.

**LUCIAN J. CARSON (L)** is an attorney with the law firm of Douglas, Ahmed, Grim and Fender, P.C. in Salem.

**GEORGE and NANCY TAYLOR BARKER** '71 live in San Jose, Calif., where he is taking an internship at Santa Clara Valley Medical Center and she is an assistant in the Study Assistance Center at San Jose City College.

**LARRY C. GALE** is a graduate student at Stanford University Graduate School of Business. He lives in Palo Alto.

**W. KARL WALKER** is an architect with the firm of Balsiger and Petterson in Wilsonville, Ore. He resides in Portland.

**GLENN HIEBER BLANCHARD** and her husband Alan live in Salem, where he is an architect for the State Highway Department. She is the vocal music director at Central Linn High School in Halsey, Ore.

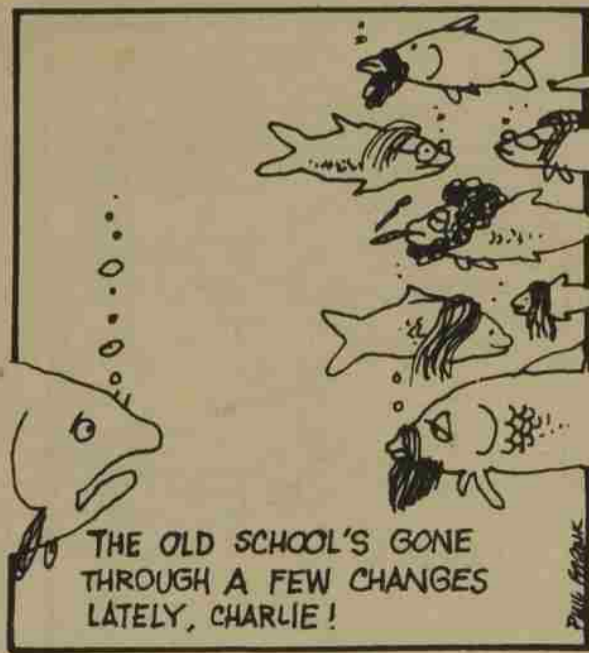
**PAUL R. GOELLER** is an assistant pastor at the Calvary Bible Church in Grass Valley, Calif.

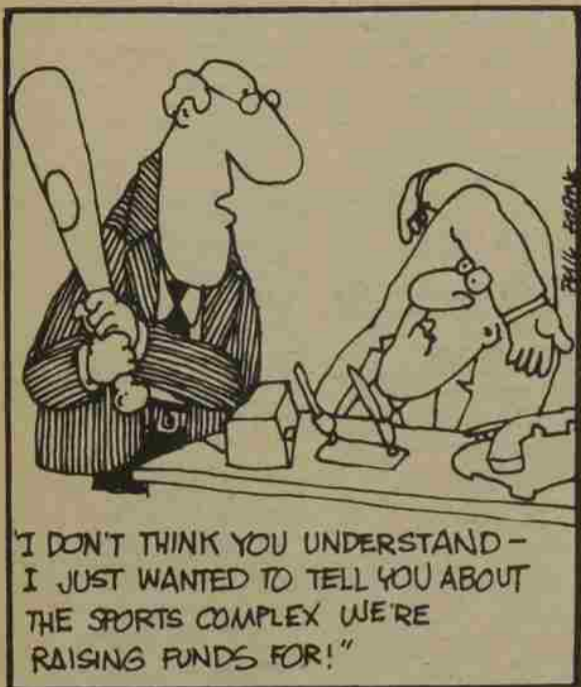
**JEFFREY S. KAMSLER** is currently enrolled in the University of Washington's Graduate School of Business Administration in Seattle, Wash.

**JAMES A. MORGADO** is a customer service aid for Qantas Airlines in the Honolulu International Airport. He lives in Pearl City.

**WILLIS W. LAU** is an accountant with Arthur Anderson and Company in San Francisco, Calif.

**MART A. STEWART** is a forester for Louisiana-Pacific in Coeur d'Alene, Idaho.





**VERNON and JUDY DODD GILMORE** are in San Diego, Calif., where he is a lieutenant in the U.S. Navy, serving as a dentist at Miramar Naval Air Station.

**JOHN H. BRUNSCHEON** is a student in the pharmacy program at Oregon State University in Corvallis, Ore.

**CHARLES W. LINDERMAN** is a graduate student at George Washington University in Washington, D.C.

**MICHAEL and DOROTHY SLAUGHTER HOUCK** are living in Honolulu, where he is a navy officer. He is currently stationed aboard the U.S.S. Daniel Webster, a nuclear submarine.

**DOUGLAS HEATHERINGTON** is a claims adjuster for Farmers Insurance in Tigard.

**JOHN and FRISCELLA OERDING MARKHAM** '71 are living in Biloxi, Mississippi, while he is stationed with the U.S. Air Force as a first lieutenant optometrist at the USAF Medical Center at Kessler AFB. Markham received his doctorate from Pacific University last May and Friscella received a master's degree at Pacific.

**JAY F. BRUNNER** has a master's degree and is now working on his Ph.D. by working in Wenatchee every summer as part of R.A. grant at Washington State University Tree Fruit Research Station. He spends his winters in Pullman, Wash.

**GREGORY J. JOHANSON** and wife Hope live in La Grande, Ore., where he is the pastor of the Elgin-Cove United Methodist Churches.

**LARRY C. GALE** is a graduate student at Stanford University and lives in Palo Alto, Calif.

**LEE E. ZIMMERMAN** is in county planning for the State of Oregon, working out of the Pendleton Court House.

## 1970

**MARGARET JENSEN** is currently teaching math at a private school, Community Chapel Christian School, in Seattle, Wash., while completing her teaching certificate at the University of Washington.

**WILFRED (BILL) and DIANA BLAISDELL BENNETT** have left California following his graduation from Stanford University Law School and are in Newport, Rhode Island, where he is attending Naval Justice School at a first lieutenant in the U.S. Marine Corps JAG. Bennett, former WU student body president, attended basic training in January in Quantico, VA.

**RUSH M. HOAG**, a 1973 graduate of the University of Oregon Law School, is a member of the Air Force JAG, stationed in Wichita, Kansas.

**GEORGE W. McLEAN and WILLIAM C. ROCHAT** received J.D. degrees from the Lewis and Clark Northwestern School of Law last year.

**ANTHONY W. FURNESS (L73)** is a deputy district attorney with the Marion County District Attorney's Office in Salem.

**CHARLOTTE J. MELVIN** is currently an account profitability ana-

lyst for Wells Fargo Bank in Los Angeles, Calif. Last year, she received an MA degree in French after having spent the scholastic year at Middlebury College's Graduate School of French in Paris, France.

**GREGORY S. HATAHAWAY** is the assistant county counsel for Washington County Counsel's Office in Hillsboro, Ore. He resides in Portland.

**KURT D. SWINBURNSON (L)** is an associate with the law firm of Lorin M. Ricker in Enterprise, Ore.

**PRESTON K. MORROW** manages the Brig, Inc. restaurant in Dana Point, Calif. He lives in Laguna Beach.

**ROBERT D. REINHARD (L73)** is the assistant staff judge advocate at Nellis Air Force Base, Las Vegas, NV. He is a legal officer with the U.S. Air Force.

**PATRICK L. and KAREN CAMPBELL** have moved to Michigan's lower peninsula off Lake Huron. Campbell flies B-52 bombers, stationed at Wurtsmith AFB, MI. Karen is at home with their daughter Becky.

**NANCY R. BATTEMA** is an accountant with Dave Weeks CPA in Bothell, Wash.

**RICHARD C. SYNOWSKI II** is an administrator with Job Therapy, Inc. in Portland. He lives in Salem.

**JAMES D. AVERELL (L73)** is an associate with the law firm of Richard Renn in Lebanon, Ore.

**Michael a. sherman** is the home improvement center manager at Fred Meyer Inc. in Eugene. He lives in Springfield.

**LYNN MILLER BUTTS and GREG BUTTS** '72 live in Meno Park, Calif. He is a claims manager for Palo Alto Transfer and Storage in Palo Alto and she is working as a substitute teacher in the Sequoia and Palo Alto School Districts.

**BARRY J. SUDERTH** is a design engineer for ESL in Sunnyvale, Calif.

**ANTHONY and LINDA JAMBOR ROBINSON** '71 live in Hilo, Hawaii where she drives a bus and he is a lecturer in social science at Hawaii Community College.

**MERRILLE E. HALL** is a travel agent for Sather-Tours and Travel in Salem.

**DAVID F. TAYLOR** is a graduate student and teaching assistant in the sociology department at the University of Montana. He resides in Bonner, Montana.

**RELAN and CAROL BLUCHER COLLEY** live in Baker, Ore., where he is a special education teacher for the blind in the Intermediate Education District and she is director of the Drop-In Center of the Indian Education Institute of Eastern Oregon State College.

**WAYNE W. COOK** is teaching at George Washington High School in Agana, Guam. He resides in Tamuning, Guam.

**ANN M. STEPHENS** is an undergraduate secretary in the computer science division at the University of California at Berkeley.

**RICHARD and DEBRA HUFFMAN SPARBER** '71 are in Grants Pass, Ore., where she is a bookkeeper for Southern Oregon State

Bank and he is the loan officer for Grantree Financial Service.

**ROBERT and KELLEY CASSIDY PUCKETT** '72 are in Hermosa Beach, Calif. He is a product coordinator for McCulloch Corporation in Los Angeles.

**DENNIS C. JOHNSON** is a tax specialist for Peat, Marwick, Mitchell and Company in Portland.

**ANNE JACKSON ROSS** is teaching in Yuma, Arizona.

**CHARLES R. BENNETT** is the editor of the "Woodburn Independent" newspaper in Woodburn, Ore.

**MOLLY S. HOLSAPPLE** is a graduate student in special ed and recreation at the University of Oregon in Eugene.

**ALAN E. ROSE** is a student and associate minister at the Temple City Christian Church in Temple City, Calif. He attends Claremont School of Theology.

**IAN and DONNA HARTIG DUNLAP** '73 live in Tigard, Ore. She teaches at Hillsboro's Mid High and he is a chemical analyst for Portland Cement.

**LEE DOVING** is a music teacher in the Salem Public Schools.

## 1971

**ROBERT D. HARRISON** is attending Drew University's Theological School in Madison, N.J.

**J. KEITH PALMER** is presently enrolled at the Medical School at the University of South Carolina in Charleston.

**ALBERT F. WOLDRICH** is a policeman in the Vancouver, Wash. police department.

**NORMAN L. MARTIN (L)** is an attorney, living in Puyallup, Wash.

**MARTY MESSNER CLORAN** and her husband **BILL CLORAN L72** are living at Hill Air Force Base, Utah, where he is an assistant staff judge advocate. She is attending Weber State College working for her CPA.

**ALVIN F. WERT** is doing graduate work in business administration at the University of Washington in Seattle. He lives in Wallingford, Wash.

**STEVEN L. SWARTSLEY (L)** is a partner with the law firm of Courtwright and Swartsley in Medford, Ore.

**PAUL D. ANDERSON (L)** has opened a French cheperie, La Bretagne, at John's Landing in Portland. His wife **GLENNIE ZIELINSKI ANDERSON L72** is an attorney in Portland.

**CHRISTOPHER C. McLAREN** teaches the fourth grade in School District No. 9 in Coos Bay, Oregon.

**RONALD J. PODNAR (L)** is general counsel for the Oregon State Bar in Portland.

**LYNDA GRUNDY WEIGAND** is a medical technologist for the Pathologist Clinical Labs at the Glendale Medical Center, Glendale, Calif. She resides in Pasadena.

**ANTHONY M. WOODWARD** is a research analyst for Northwest Airlines, Inc. in St. Paul, Minn.

**DARILYN RASCHIO BENNETT and MICHAEL W. BENNETT** '70 are residing in Glenside, Pa. while he works on the third year of a four year doctoral program in human relations at New York University. She is an instructor of mentally retarded adults at the Bancroft School in Haddonfield, New Jersey.

**JEANNEY BUSCH BURLINGTON and BRUCE BURLINGTON** '72 are living in Colorado Springs, Colorado, where he is an Air Force sergeant in accounting and finance at the Air Defense Command at Peterson Field.

**ROGER HANSEN** lives in Seattle, Wash., where he is working for the welfare system investigating fraudulent actions of welfare recipients.

**LINDA M. FORREST** is a doctoral candidate in Seattle, Wash.

**CAROL D. WARD** is the personnel manager for the Philips Industries, Inc. in Stayton, Ore. She lives in Salem.

**CHRISTOPHER SAVEREID** is a graduate student in architecture at the University of Minnesota in Minneapolis.

**SALLY ROUNTREE GALVIN** is a news researcher for NBC News in Washington, D.C., where her husband Mike is studying Latin American politics at the School of Foreign Service at Georgetown University.

**LARRY A. CUNNINGHAM** is the choral director at Lake Oswego High School, Ore.

**SHELLEY MILNE** is a secretary for the Oregon State Scholarship Commission in Eugene, Ore.

**DAREN L. GOIN** is a student at the University of Oregon Dental School in Portland.

**GARY J. SCRIVNER** works for Nicolai Products in Tigard, Ore.

**ANITA MOORE JONES** is a secretary at the University of Missouri in Rolla and her husband Tim is the producer of a new FM stereo radio station on the campus.

**WILLIAM B. ANDERSON** is a law student at Southwestern University School of Law in Los Angeles, Calif.

**NANCY C. WOLFF** teaches Spanish at South Salem High School.

**DAVID M. STONE** is a student at the University of California at Berkeley.

**PAMELA S. FORSCH** works in the personnel office of Jantzen, Inc. in Portland.

**JAMES P. ROBINSON** is an airline analyst for Boeing Airlines in Renton, Wash.

**BARBARA J. HAAS** is working toward a teaching certificate with a year-long internship in a Kirkland, Wash. elementary school. She lives in Redmond.

**JOSEPH and GAYLE JONES HOFFMAN** live in Beaverton, Ore. After graduating from the Stanford University School of Business last year, Hoffman is now a staff accountant at Peat, Marwick, Mitchell and Company in Portland.

**ROBIN SIMONET COLMAN** is a housewife in San Diego, Calif.

**WILLIAM G. MANSFIELD** is managing Guy's Drug Stores while going to school in San Leandro, Calif.

**DAVID E. WARNER** is a church insurance consultant for Friscoe and Associates in Albany. He resides in Corvallis.

**JACKIE AGEE** is the editor of "Real Estate," a monthly publication of Stan Wiley, Inc. Realtors of Portland.

## 1972

**CHERIDA COLLINS SMITH** (Mrs. Glenn A.) lives in Alexandria, Va. with her husband.

**WILLIAM BARTON (L)**, an attorney in Newport, Ore., is serving as pro-tem municipal judge.

**DAVID P. WEINER (L)** has become associated with the firm of Samuels, Samuels and Yoelin in Portland, Ore.

**DAVID H. HILGEMANN**, formerly a Marion County Deputy District Attorney, has joined the firm of Brown, Schlegel, Milbank, Wheeler and Jarman in Salem. His wife Vickie is a teacher at Chemeketa Community College.

**ROBERT M. FOSTER** just completed a six-month tour of the East Coast and Southwest, working three weeks at the National Scout Jamboree-East near Pittsburgh, Pa. He is currently unemployed and lives in Salem.

**CATHERINE P. KENNEDY** is a graduate student in speech pathology at Western Washington State College in Bellingham, Wash.

**MARY CHRISTINE LANGSTON** teaches English in the Morrow County School District in Ione, Ore.

**EDWARD J. OSTERMAN** is a sales representative for Campbell

Sales Company in Vancouver, Wash. He lives in Salem.

**GREG WEST (L)**, formerly in private law practice in Salem, is now a City of Salem assistant city attorney. West and his wife Susan, a teacher in physical education at McNary High School, reside in Salem.

**VICTORIA B. SUTRO** is a credit analyst for Carte Blanche Corporation in Los Angeles, Calif.

**RICHARD J. WINN** is working at the Mt. Hood Golf Course in Wemme, Ore. He recently moved from West Covina, Calif. to Oregon.

**PETER A. FERN** is an account/public relations for Tihati Inc. in Honolulu, Hawaii.

**EDGAR BLAKE IV** is a first year seminary student at the Fuller Theological Seminary in Pasadena, Calif.

**KEVIN R. BOYD** is a mechanical engineer, sailing on a private yacht, "The Misty," out of Florida to the Bahamas, Caribbean and expects to be in Hawaii by summer. His permanent address is Charbonneau in Wilkesville, Ore.

**GEORGE W. MEAD, JR. (L)** is an attorney in Portland.

**SARAH D. MASON** is a medical receptionist in the Salem Clinic.

**DAVID L. BENSON** teaches English at the Executive Language School in Tokyo, Japan.

**DOUGLAS W. McQUAID (L)** is an attorney in Seattle, Wash.

**ROGER W. GRACEY (L)** is an attorney in Silverton, Ore.

**JOHN O. LINDE (L)** is a junior partner with the law firm of Schmidt and Linde in Friday Harbor, Wash.

**LEONARD H. BEASLEY (L)** is an attorney with the law firm of Morrison and Bailey in Portland.

**DOUGLAS D. ATTWOOD (L)** is the district counsel of the Small Business Administration in Spokane, Wash.

**DONALD W. SCHACHT (L)** is an attorney in Walla Walla, Wash. He lives with his family in Lowden, Wash.

**GARY P. BURLESON (L)** is a deputy prosecuting attorney for Mason County in Shelton, Wash.

**DALE J. GALVIN (L)** is an attorney with Loucks and Lamb of Seattle, Wash.

**JAMES M. BRIGGS** is the president of Rogue Port Enterprises in Gold Beach, Ore.

**CAROLINE HORN JONES** teaches piano and is a housewife in Myrtle Point, Ore., where her husband Dale manages the Doolan plant there.

**JODY K. GOTTER WILSON** (Mrs. John) teaches at Fowler Junior High School in Tigard, Ore.

**PETER L. OSBORNE (L)** is an attorney with the law firm of Anderson, Hall, Lothian and Gross in Portland.

**TERRENCE F. MCCARTHY (L)** is a deputy prosecuting attorney for Pierce County in Tacoma, Wash.

**MARY KATHLEEN MCCARTHY** teaches Spanish at Corvallis Senior High School.

**RANDOLPH B. STOCKDALE** is a research assistant for the Trade Committee of the Oregon State Legislature. He lives in Salem.

**TERRY I. PROTTSMAN** is the foreman for McClellan and Sons in Salem. He lives in Silverton.



## WILLAMETTE CLASSNOTES 7

**GARY E. BAUER** is an administrative assistant for the Oregon State Legislature, Senate Minority Office. He lives in Gladstone, Ore.

**TERRY V. JOHNSON** is an assistant buyer of major appliances for Meier and Frank in Portland, Ore.

**DOUGLAS W. McCABE** is a student at Oregon State University in Corvallis.

**VICKY A. VANHOOK** is a remedial education teacher at the Oregon Commission for the Blind in Salem.

**KATHLEEN F. SPIEKERMAN** recently moved from San Leandro, Calif. where she was working in a real estate office in Berkeley to Portland, Ore.

**MICHAEL A. KESNER** is a student at the University of Puget Sound Law School in Tacoma, Wash.

**DIANE MATTSO HARMON** is a music teacher in the Smithers School District in Smithers, B.C., Canada.

**DOUGLAS C. BROWN** is a law student at the University of Puget Sound in Tacoma, Wash.

**LUCINDA PEASE** is a Peace Corps volunteer, serving in Colombia, South America.

**CAROL VAN BOKKELEN** is an assistant in trust trading for the Bank of America in San Francisco, Calif.

**CARL L. GREEN** is an insurance underwriter in Salem.

**ERNEST and KAREN REEDY ANKRIM** '73 live in Eugene, where he is a graduate student and she is a statistical typist.

**LAWRENCE R. DAVIDSON** is a law student at the University of Puget Sound Law School. His wife **STEPHANIE STEFANO DAVIDSON** '70 is a senior at UPS, majoring in psychology.

**SYLVIA L. JENSEN** is a law student at Willamette University's College of Law. She resides in Portland.

**DEAN G. PETRICH** is a student-worker at the Paolo Soleri Accanti School in Mayer, Arizona.

**MICHAEL J. WEBER** teaches at Kenton Elementary School in Portland.

**DANIEL and CYNTHIA TAVERES MAHLE** '73 live in Kaneohe, Hawaii. He is in construction in Honolulu.

**ROBERT W. NUNN** is a student at the University of Oregon Law School in Eugene.

**KATHERINE HANSEN** lives on Balboa Island, Calif. and teaches kindergarten in Fullerton and works at Disneyland in her spare time.

**JOHN M. REDMOND** is a law student at Loyola Law School in Los Angeles, Calif.

**JOVITA A. JAEGER** is a data analyst for O'Brien Associates in Santa Monica, Calif.

**LLOYD W. MERRYMAN** is a graduate student at the University of Southern California, living in Laguna Beach.

**NORMAN J. SMITH (L)** is a partner in the firm of Smith and Smith in Portland.

**ROBERT C. BOWEN** is a student and teaching assistant at Oregon State University in Corvallis.

**CEDRAN (GUS) G. ARZNER** is the aquatic supervisor of the Fred Endert Municipal Swim Pool in Crescent City, Calif. He also is the swim coach of the AAU Crescent City Swim Club and assistant coach of the high school swim team.

**MICHAEL H. FOUST** is a psychiatric aid at the Santa Ana Psychiatric Hospital, Santa Ana, Calif.

**REBECCA SPITZ COOPER** teaches in Parsons, Kansas.

**NATALIE M. MORSE** works in the accounts receivable dept. of the Pacific Power and Light Company in Portland.

**RICHARD A. FRAUMENI** is a claims examiner for the Hartford Insurance Company in San Francisco, Calif.

**JANICE WITHER KELLOGG** works for the First National Bank in Whitefish, Montana.

**CHERYL ANN RICHMAN** works in the Montana Assay Office in Portland and is a part-time graduate student at Portland State University.

**ELLEN A. GRIFFITH** is a rehabilitation therapist for the Department of Health at Napa State Hospital in Imola, Calif.

**RANDOLPH STEWART** and his wife Lynda live in Toledo, Ore. He is a park ranger in Beverly Beach.

**GAIL A. KAUFMANN** is a clerk-typist for the Hawaii Newspaper Agency in Honolulu, Hawaii.

**NANCY MILLER DREBLow** (Mrs. David) is an executive secretary for Dynapoli in Palo Alto, Calif.

## 1973

**PATRICIA C. ALLEY** is working on her master's degree in English Literature at Claremont Graduate College in Claremont, Calif.

**GEORGE P. LIVESLEY** (L) is an assistant attorney general for the Department of Justice in Salem.

**WILLIAM A. MASTERS** (L) is an associate with the law firm of Davies, Biggs, Strayer, Stoel and Boley in Portland.

**JOSEPH D. PUCKETT** (L) is a law clerk for the Washington Supreme Court in Olympia, Wash.

**JAMES F. SIEGEL** (L) is a student in the Boston University Graduate Tax Program. Siegel and his family live in Plymouth, Mass.

**THOMAS W. SWINT** (L) is a deputy district attorney in Umatilla County, Pendleton, Ore.

**F. STEVEN LATHROP** (L) is an attorney with the law firm of Davis, Wright, Todd, Riese and Jones in Seattle, Wash.

**CHRISTOPHER I. BRAIN** (L) is an attorney with the law firm of Merges, Brain, Youngberg, Goucher, Allen and Larsen in Seattle, Wash.

**PATRICK H. JENSEN** (L) is attending the New York University Law School, graduate division in tax.

**ROBERT E. BIDDLE** is a senior apprentice for Albertson's in Seattle, Wash. He also attends college at Northwest College in Kirkland.

**GARNET E. KENYON** lives in Salem, where she works in the public welfare division, North Salem Branch.

**LOUISE M. CADY** is the manager of charter operations for Ocean Shores Marina in Ocean Shores, Wash.

**MICHAEL S. SAUSSER** is a student/clerk for the State of Oregon Employment Agency and is a senior at Portland State University.

**LEONARD AND CHERYL KERKCH PARKER** live in Bend, Ore., where he is a salesman for Cascade Office Equipment.

**LYLE O. HANSEN** (L) is an attorney in Snoqualmie, Wash.

**MARTHA D. STEPHENSON** works in new accounts for the First State Bank of Oregon—Multnomah in Portland.

**DANIEL E. McCABE** (L) is an attorney in Hillsboro, Ore.

**ROSEMARY SHEPPERD** is an environmental statement writer for the U.S. Forest Service in Portland.

**MICHAEL L. STADIUS** plans to enter the University of Oregon Medical School in the fall. He is now living in Klamath Falls, Ore.

**KATHLEEN M. PULLIAM HOLCOMBE** (Mrs. Fort) is a senior at William Jewell College in Liberty, Mo.

**KENDALL G. TUCKER** is doing graduate work for a master's of divinity degree in Calif. He resides in Lemon Cove.

**ALEXANDRA J. BAKER** is a cabin attendant for United Airlines, stationed in San Jose, Calif.

**SARA S. SAMPSON** teaches the fifth grade at Roy Elementary School in Roy, Wash. She resides in Tacoma.

**GAIL J. GIBBENS** teaches at Eureka High School, Eureka, Nevada.

**BRUCE W. OVERHOLT** has separated from the Army after three years active duty and is a materials handler at Goodyear Aerospace in Litchfield Park, Arizona while attending Glendale Community College in Phoenix.

**MADGE E. HOUSER** is a secretary for Allied Mills, Inc. in Chicago, Ill.

**ANTHONY J. FLAGG** is the office manager of Credit Bureau, Inc. in Newport, Ore.

**PAUL F. BARNUM** is a commercial painter in Astoria, Ore.

**JUDITH A. PAUL** is the director of music at Schoenbar Junior High School in Ketchikan, Alaska.

**RICHARD K. KRAFT** is an ensign in the U.S. Navy, stationed in Jacksonville, Florida.

**BENNETT J. PROWS** is a first year law student at Northwestern School of Law at Lewis and Clark College.

**JOHN I. HODGES, JR.** is a graduate student at Oregon State University in Corvallis.

**KERRY J. PULLIAM** is working on her master's degree in architecture and urban planning at the University of California at Los Angeles.

**SCOTT and JOANN YOUNG DAN-**



**NEN** are living in San Marino, Calif., where she is doing graduate work in physical therapy and he is a U.S. Army recruiter.

**DAVID and DEBORAH DONNELL PARTRIDGE** '74 live in Lakeview, Ore., where he is a band instructor at Lakeview Junior/Senior High School.

**JOHN W. HALL** is a bill distribution accountant with the General Telephone Company of the Northwest, Inc. in Everett, Wash. He lives in Lynnwood.

**JERI L. FRAZIER** is a fifth grade intern teacher at Tillamook School District No. 9 in Tillamook.

**CAROL A. ROBERTS** is an English teacher at Redmond High School, Redmond, Ore.

**MARILYN FRANCES JUDD** is an executive secretary for Pepsi Cola in Portland.

**PATRICIA D. BINCKLEY** is in sales at Metzler's Furniture in Anaheim, Calif.

**MARGARET H. JAMBOR** is doing practice teaching in Springfield while attending the University of Oregon.

**DEBORAH A. SMRSTIK** is in the communication design department of Parsons School of Design in New York City.

**JENETHA G. ROUGH** is a student nurse at the Good Samaritan Hospital in Portland.

**ELIZABETH H. COUCH** recently received a BA degree from the University of Southern California. She lives in Menlo Park, Calif.

**ANNE E. HUBER**, whose permanent address is Aberdeen, Wash., is studying this year in Europe. She is currently located at the Findhorn Foundation in Forres, Moray, Scotland.

**WILLIAM N. HOWELL** recently graduated with honors at the University of California at Santa Barbara. He received a BA degree in sociology.

**DONALD H. MANSFIELD** is a graduate student at the University of British Columbia in Vancouver, B.C., Canada.

**LEILANI MARQUART TUCKER** graduated from the University of Oregon last June with a Bachelor of Arts in mathematics and curriculum and instruction, elementary education. She lives in Eugene, Ore.

**GRETCHEN M. KEUSS** is a student at the University of Washington in Seattle.

**LYNN R. NYSTROM** is a claims representative in workmen's compensation for Industrial Indemnity Insurance Company in Portland. Nystrom and his wife Ruth reside in Aloha.

**JAMES B. CUNO** is a candlemaker at Bunky's Wax Works in San Francisco, Calif.

**RICHARD M. TODD** recently graduated from the Evergreen State College in Olympia, Wash. in journalism and pre-law/civil liberties and is the assistant statistical editor/columnist for Triangle Publications, Inc. in Seattle. He also is employed as advertising manager for the Wash. Horse Breeders Assn. publication, "The Washington Horse." He is engaged in breeding thoroughbred race horses and farming.

**WILLIAM W. DAVIS** is a graduate

student in psychology at Pepperdine University in Los Angeles. He lives in Orange, Calif.

**LOUISE McGOODWIN** teaches in the Aubrey Park School of Eugene.

**ALLYN SHELLINGER IRVING** teaches German at Pilot Butte Junior High School in Bend, Ore.

**NANCY LANGWORTHY** graduated from the University of Oregon in June and then traveled throughout Europe. She is living in Alexandria, Va.

**JOLI A. SANDOZ** is currently attending Brigham Young University in pursuit of a master's degree in recreation. She lives in Springville, Utah.

**NATHAN D. MANNAKEE** (L) is a warehouseman for the American Wholesale Grocery Company in Kent, Wash. He lives in Seattle.

**GERALD L. HEDLUND** (L) is a deputy district attorney for Klamath County in Klamath Falls, Ore.

**HARTWELL H. K. BLAKE** (L), his wife Rosemary and new baby live near Boise, Idaho, where he is an assistant attorney general in the Statehouse.

**CHARLES L. ROOS** (L) is an attorney with the firm of Coughlin, Imhoff, Christenson and Lynch in Boise, Idaho.

**JAMES M. HABBERSTAD** (L) is an attorney with the law firm of Dick and Dick in The Dalles, Ore.

**RICHARD H. GASSNER** (L) is an attorney with the Arthur Andersen and Company in Portland.

**JOSEPH W. MOORE** (L) is a captain in the Judge Advocate General's Corps of the U.S. Army in San Diego, Calif.

**ROBERT C. CORCORAN** is on the staff of Campus Crusade for Christ International engaged in campus ministry at Stanford University in Palo Alto, Calif.

**RICHARD E. AUFRANC** (L) is a Salem attorney, is teaching part-time at Willamette's College of Law.

**CAROL CARLSON** is student teaching at Parrish Junior High School in Salem.

**PAULA M. SCHUSTER** is a junior, music major at the University of Montana in Missoula, Mont.

**MARY H. SEXTON** is a student at Stanford University and lives in Menlo Park.

**SHARON ANN BROCKMAN** is a math major at Oregon State University in Corvallis.

**KATRYN M. COMBS** will graduate this spring from Dominican College of San Rafael and will start her credentials program this summer. She is working as a diagnostic assistant at Cortez Elementary School.

**CYNTHIA M. FERRELL** will graduate from the University of Washington in June and plans to spend the summer at the University of Edinburgh in Scotland. Her home address is Longview, Wash.

**JOHN T. NEVIUS** is a student at the University of Washington in Seattle.

**KATHERINE L. SCHLICK** is studying English at the University of Washington in Seattle, Wash.

**DON M. PEACOCK** is a student at the University of California at Berkeley. He lives in Walnut Creek, Calif.

**CAROL M. DANIELSON** is a senior, majoring in psychology and Japanese, at the University of Hawaii in Honolulu.

**KAREN L. SCHUBERT** is a student at Oregon State University in Corvallis and plans to graduate with a BA degree in liberal studies this spring.

**JASPER M. WINN** is a senior at Oregon College of Education in Monmouth and plans to graduate in June with a degree in elementary education. He works as an institutional worker II at Fairview Hospital.

**KATHRYN M. FELT** is a graduate of Bassist Fashion Institute and is currently the assistant fashion manager for Montgomery Ward in Portland.

**KRISTEN L. WIPER** spent last year in Paris, France studying music and language. She is now a student at the University of Oregon School of Music.

with the Alum Rock School District and he is an engineer with Philco-Ford in Palo Alto. She spent the summer of 1972 on a trip to the Orient.

**JANE L. VAN VLECK** '73 to **WILLIAM MOSHER** '72, Aug. 18, 1973; they reside in Portland.

**JAMES G. KINCAID** '73 to **Brenda L. Houk**, Aug. 18, 1973; they are at home in Redmond, Oregon where he is employed as Deputy District Attorney for Baker County.

**STEVEN B. PAULDING** '62 to **Clara M. Dunn**, Aug. 4, 1973; living in Pittsburgh, Pa. where he is a representative of Equitable Life Insurance of New York.

**ANN GIBBENS STOUT** '54 to **Lester A. Davis**, June 23, 1973; they are at home in New Carrollton, Md. where she is a member of the Washington, D.C. alumnae chapter of Mu Phi Epsilon and the Friday Morning Music Club.

**MARIE GARDNER** '69 to **Lawrence L. Hills**, Feb. 3, 1973; they reside in Suitland, Md.

**MARILYN SPARKS** '62 to **Byron Severson**, June 9, 1973; living in Grand Coulee, Wash. where he is engaged in construction.

**KAY CONKLIN** '71 to **Bob Roberts**, Aug. 1, 1973; they are living in Salt Lake City where he teaches high school.

**CYNTHIA L. SMITH** '71 to **Bruce C. Lentz**, Oct. 6, 1973; they reside in Amity, Oregon.

**RICHARD BENNER** '68 to **Kathy Hall**, June 9, 1973; living in Portland where he teaches and coaches junior high school and she also teaches.

**DON A. SOLBERG** '69 to **Joy VanderMaas**, June 17, 1973; they are at home in Greeley, Colo. where he is an intern at Weld County General Hospital.

**SUSAN K. GILPIN** '69 to **Richard D. Payne**, May 26, 1973; living in Long Beach, Calif. where she is Editorial Assistant at Pacific Hospital and he is employed as Coordinator of the Health and Welfare Dept. of Teamsters Local 692.

**CAROL TEN EYCK** '66 to **JONATHAN J. BARTER** '65, Oct. 1973; they are at home in San Mateo, Calif.

**JOANN F. YOUNG** '73 to **SCOTT DANNEN** '73, Aug. 25, 1973; they are residing in San Marino, Calif. where he is in the army and she is studying for a degree in physical therapy at Long Beach State College.

**ROGER A. ANUNSEN** '73 to **Cathy S. Ragan**, Sept. 22, 1973; they are at home in Albany, Oregon where she is a juvenile counselor and he is practicing law.

**JOHN L. COLLINS** '72 to **Linda J. Huffman**, Dec. 1973; they are living in New York City where he is attending New York University Tax School and she is a secretary.

**WENDY J. LEIGHTON** '73 to **MARION H. WEAVER** '72, May 19, 1973; they are residing in Okanogan, Wash. where he is employed as a deputy prosecutor by Okanogan County.

**GARY HOLMES** '60, June 16, 1972. He and wife Sharon are at home in Mt. View, Calif.

**ZELDA M. MULKEY** '35 to **WILLIAM P. MC KINNEY** '37, May 6, 1973; they are living in St. Helens, Oregon where he is retired.

**LAURA B. GOSELMAN** '72 to **SCOTT HANSEN** '72, July 28, 1973; they are living in Tucson, Ariz. where he attends the University of Arizona, Graduate Department of Government.

**PATRICIA M. JUDY** '72 to **GARY I. FUNES** '72; they reside in Bend, Oregon where she teaches math at Cascade Junior High School and he is a sales representative for Kirby Vacuum Cleaner Company.

**RICHARD D. BIGGS** '67 to **Twylla J. Drummond**, July 8, 1973; living in Eugene, Oregon where he is a business student at the University of Oregon.

**MARK A. PELEAK** '73 to **Anne Straub**; they live in Willkes-Berre, Pa. where he is employed as a staff attorney with Luzerne County Legal Services Association, Inc. and she is a free lance writer.

**RANDALYN K. NICKELSEN** '73 to **DONALD P. JENSEN** '73; residing in Corvallis, Oregon where she is the assistant production manager at Barometer Memorial Union at Oregon State University.

**RICHARD B. HEDDLESTON** '70 to **Paula Morales**, August 1973; they are at home in Woodburn, Oregon where he is employed with the Oregon State Highway Division as a highway engineer.

**DENNIS RILEY** '65 to **Katy Luce**, July 14, 1973; they live in Duluth, Minn. where he is employed as an Assistant Professor of Political Science at the University of Minnesota.

**BARBARA J. PFAFF** '60 to **David F. Ford**, July 14, 1973; they are living in San Jose, Calif. where she is employed as a guidance counselor

with the Alum Rock School District and he is an engineer with Philco-Ford in Palo Alto. She spent the summer of 1972 on a trip to the Orient.

**JANE L. VAN VLECK** '73 to **WILLIAM MOSHER** '72, Aug. 18, 1973; they reside in Portland.

**JAMES G. KINCAID** '73 to **Brenda L. Houk**, Aug. 18, 1973; they are at home in Redmond, Oregon where he is employed as Deputy District Attorney for Baker County.

**STEVEN B. PAULDING** '62 to **Clara M. Dunn**, Aug. 4, 1973; living in Pittsburgh, Pa. where he is a representative of Equitable Life Insurance of New York.

**ANN GIBBENS STOUT** '54 to **Lester A. Davis**, June 23, 1973; they are at home in New Carrollton, Md. where she is a member of the Washington, D.C. alumnae chapter of Mu Phi Epsilon and the Friday Morning Music Club.

**DR. BENJAMIN W. LEI** '57 and his wife Barbara, a son, Dietrich; born May 1973.

**JONATHAN C. HATCH** '72 and his wife, a son, Jeremy Todd; born Nov. 12, 1972.

**PAULA HARRIS WOLKERSTORFER** '66 and husband Don, a daughter, Laura Christine born June 26, 1973.

**JOHN** '67 and **MARCIA HUNT BAKER** '69, a son, Jeffrey Eric; born May 28, 1973.

**ROBERT S. ELDER** '63 and his wife, a daughter, Lorna Cruz; born Nov. 7, 1973.

**PATRICK** '70 and **KAREN COOPER CAMPBELL** '70, a daughter, Rebecca Jean; born Sept. 7, 1972.

**ROBERT L64 and ANN FINLAYSON VOAS** '64, twin daughters, Shelby Elizabeth and Amy Elizabeth; born Feb. 23, 1973.

## DEATHS

**ALDEN W. ANDREWS** '13 died Feb. 25, 1974 in Salem. He taught shop at Parrish Jr. High School and carpentry at MacLaren School for Boys in Woodburn before retirement. Survivors include widow Mamie and two sons.

**HARRY E. RAREY** '22 died Oct. 6, 1973 in Montebello, Calif. He served as a Methodist Minister for 26 years in the Pacific Northwest Conference and also served as a counselor at Rose Hills Memorial Park in Whittier for ten years before retiring in 1971. He is survived by wife, Dorothy.

**WESLEY TODD HOLMBERG** '59 died March 1, 1973.

**MARIAN HERRICK WALKER** '41 died Feb. 1, 1974 in Mt. Rainier, Maryland.

**KEITH VAN WINKLE HEINZ** '15 died Aug. 24, 1973. She is survived by her husband, Vinnie.

**TIMOTHY LYONS, JR.** '53 died of cancer Jan. 14, 1974 in Great Lakes, Ill. A career military man, he was stationed in Germany and served four tours of duty in Vietnam. He is survived by a daughter.

**LYLE P. BARTHOLOMEW** '20 died Nov. 26, 1973 in Salem, three days following the death of his wife Blanche. A retired architect, he is survived by a sister, GLADYS BARTHOLOMEW '22.

**KENNETH N. MONGRAIN** '71 died June 9, 1973. He had received a Peace Corps assignment for Africa and was to have left in a few weeks. He is survived by parents Mr. & Mrs. Ted Mongrain of Portland and grandparents Dr. '14 and Mrs. NEAL ZIMMERMAN also of Portland.

**GERALDINE SCHMOKER PRESTON** '48 died Aug. 28, 1973 in Salem. A native of Salem, she had been employed as a social worker for the state.

**EDNA LURA MORGAN** '28 died June 3, 1973 in Bandon, Oregon after a lengthy illness. A longtime teacher in the Bandon School District, she is survived by an aunt.

**WALDO O. MILLS** '14 died Aug. 16, 1973 in Salem. His wife **ADA MARK MILLS** '13 died in June 1973. Survivors include a daughter and son, **DR. WALDO O. MILLS JR.** '36.

**BONNIE WALLER GIBSON** '71 died in an auto accident May 25, 1973 in Bakersfield, Calif.

**ENOCH DUMAS** '33 died in Berkeley, Calif. Sept. 10, 1973. He is survived by wife **MARGARET SCHREIBER DUMAS** '31. He was professor emeritus of education at the University of California in Berkeley after 24 years as a faculty member at the Berkeley campus. His last book was "Math Activities for Child Involvement" (1971).

**MARIE MESSERSMITH GURR** '31 died Aug. 26, 1973 in Australia. She taught in missionary schools in Malaya before moving to Australia. She is survived by her husband Frederick and a son.

**AGGIE A. LARSON** '14 died Nov. 28, 1973 in Salem. A retired nurse, she is survived by two daughters, **ETHEL LARSON JONES** '48 and **HELEN LARSON HARRIS** '49.

**ROMEO W. GOULEY** '40 of Danville, Calif. died Sept. 7, 1973.

**JESSIE PYBUS BOND** '26 died Aug. 24, 1973 in Olympia, Wash. She is survived by her husband **CHARLES A. "AL" BOND** '26 and a daughter.

**MALCOLM P. MEDLER** '27 died Jan. 7, 1974 of a heart attack in Portland. Employed by Oregon Commission for the Blind for 25 years, he taught braille transcribers after his retirement in 1969. He is survived by his wife Dorothy and a son.

## WEDDINGS

**CATHRIN HEADRICK** '38 to **Jay M. Wauchope**; they are living in Portland.

**CAROLE J. STOENNER** '74 to **Edward A. Cummings**, Dec. 7, 1973; they are at home in Missoula, Montana.

**MARY F. GUTHEIL** '72 to **WILLIAM S. ANDERSON** '72, March 16, 1974; they reside in Los Altos, Calif.

**RANDI D. COLE** '69 to **George C. Weber**, July 28, 1973; they are living in Oakland, Calif. where she is employed as an occupational therapist at Children's Hospital in San Francisco and he is working in marketing for Kaiser Aluminum.

**MARY MORLEY CARPENTER** '33 to **Oscar Hickerson**, Sept. 8, 1974; when not traveling they reside in Boise, Idaho.

**JANE M. MC CALLUM** '74 to **KYLE D. SPAIN** '73, Feb. 9, 1974; they are at home in Salem where she is finishing her studies at Willamette and he is employed with Pacific Northwest Bell.

**BRUCE IMAI** '66 to **Jeanne S. Davis**, August 1973; they are living in San Francisco, Calif. where he is employed as an attorney in the law office of Andre V. Tolpegin.

**WENDY J. LEIGHTON** '73 to **MARION H. WEAVER** '72, May 19, 1973; they are residing in Okanogan, Wash. where he is employed as a deputy prosecutor by Okanogan County.

**GARY HOLMES** '60, June 16, 1972. He and wife Sharon are at home in Mt. View, Calif.

**ZELDA M. MULKEY** '35 to **WILLIAM P. MC KINNEY** '37, May 6, 1973; they are living in St. Helens, Oregon where he is retired.

**LAURA B. GOSELMAN** '72 to **SCOTT HANSEN** '72, July 28, 1973; they are living in Tucson, Ariz. where he attends the University of Arizona, Graduate Department of Government.

**PATRICIA M. JUDY** '72 to **GARY I. FUNES** '72; they reside in Bend, Oregon where she teaches math at Cascade Junior High School and he is a sales representative for Kirby Vacuum Cleaner Company.

**RICHARD D. BIGGS** '67 to **Twylla J. Drummond**, July 8, 1973; living in Eugene, Oregon where he is a business student at the University of Oregon.

**MARK A. PELEAK** '73 to **Anne Straub**; they live in Willkes-Berre, Pa. where he is employed as a staff attorney with Luzerne County Legal Services Association, Inc. and she is a free lance writer.

**RANDALYN K. NICKELSEN** '73 to **DONALD P. JENSEN** '73

If these areas of critical importance can be examined carefully and thoughtfully, and creative changes effected relatively soon, we will have demonstrated that we can respond appropriately to the external environment, and in the process will have strengthened our programs and practices. We also will create the environment in which other difficult problems confronting the University can be dealt with openly and effectively.

#### Other Areas of Concern

There are additional areas of concern which must be addressed by the Willamette community in the near future. One which can be postponed no longer is university governance. It is critical that decision-making procedures be streamlined and that established methods for implementing programs and policies be formulated. This is a task requiring a University-wide perspective and the expertise of those familiar with techniques of governance. The Committee for Institutional Change recommends that the President proceed with implementation of the Committee on Committees report of November 8, 1973: That a governance committee be appointed "... (1) to review and recommend a plan of University governance; and (2) to formulate a recommendation for a revision of University committee structure." The Committee further recommends that the governance structure contain a mechanism for developing reasonable procedures for cut-backs in university operations should the contingency of inadequate revenue occur.

The Committee recommends that other areas of concern, listed below, be addressed by task forces as soon as possible after the priority needs have received attention.

1. Better information and participation in setting priorities for allocating resources.
  2. Student services.
  3. Student recruitment practices and policies.
  4. Student cost factors.
  5. Faculty, student and administration evaluation.
  6. Faculty-staff recruitment practices.
- (Ed. note: The Committee outlined task force organization and proposed implementation, which is deleted from this report because of space limitations).

### THE TASK FORCES

**In order to honor a commitment to liberal education and to respond to a challenging external environment, Willamette University must continue to evaluate its programs and methods of instruction and to seek better ways of providing effective learning opportunities.**

**Modes of Inquiry** Numerous suggestions have been made by members of the University community for modification of the educational experience at Willamette. These suggestions should be studied. In addition, higher education is experiencing demands for increased flexibility in means of obtaining college training and degrees. It may be possible to adapt the Willamette program to meet some of these demands and to increase opportunities for students of diverse backgrounds and ages to attend Willamette.

**Charge** — The Task Force on Modes of Inquiry should determine the composition, preferences, and expectations of our student body and should study proposals for change and improvements in the academic experience at Willamette. It should make

recommendations of proposed changes and should oversee implementation of approved changes.

The Task Force is encouraged to seek immediate approval and implementation of proposals as they are developed.

**Guidelines** — The Committee for Institutional Change has received information which suggests that members of the University community desire improvements in the educational program which would:

1. Increase the opportunities for independent study and put more focus on individual achievement.
2. Place more emphasis on an ability to synthesize information and to develop analytical skills.
3. Make our programs more responsive to preferences and expectations of students.
4. Provide more continuity between the living experience and the classroom.
5. Increase the attention paid to moral and ethical judgment.
6. Develop greater "esprit de corps" among all members of the Willamette community for academic inquiry in general, and for its manifestation at Willamette in particular.
7. Develop greater diversity in the academic community.
8. Provide alternatives to traditionally accepted methods of academic bookkeeping.
9. Highlight the relevance of liberal arts to the everyday world.

During its studies and deliberations the Task Force should maintain an awareness of:

1. Current strengths of the University.
2. Financial and physical implications of any recommendations.
3. External factors and pressures affecting higher education.

#### Possible Action Area

1. Interdepartmental and interdisciplinary seminars: (Faculty and students from different departments and disciplines or mixed students and local residents organized around a "theme" or special interests of participants).
2. The freshman year as a unique experience.
3. Innovative programs to attract a greater diversity of participants:
  - a. Upside-down degrees (accept major from community colleges or technical training and finish degree "requirements" with liberal arts courses).
  - b. Mini-courses — night, weekends, summer. (Short courses, "skills courses," summer institutes, academic retreats.)
  - c. Community education or continuing education.
  - d. Opportunities for alumni, emeritus, and retired faculty.
  - e. An Institute for Innovative Studies as a catalyst for change on the campus.
4. Off campus programs:
  - a. Exchange programs between students, between faculty or both; individually or in groups, national or international.
  - b. Work-study programs.
  - c. More internship programs.
  - d. Foreign study programs.
  - e. Consortia (one example, consortium of colleges which support Malheur Field Station).

#### Inter-College Relationships

**Rationale** — Administration, Law, Liberal Arts, Music-Theatre. Together we comprise the University and share a responsibility for educational environment of our students. We have common ties in our concern for the well-being of mankind. As a university we should encourage imaginative and integrative efforts through the creative arts. Closer intellectual and co-curricular ties among the four colleges hold exciting opportunities. It would be idealistic to believe that closer interaction

among the college can be achieved easily or immediately. A degree of autonomy is necessary and inevitable. However, possibilities for mutual enrichment do exist, and we have a responsibility to grapple collectively with some of the major problems which will confront society in the future.

**Charge** — The task force on Inter-College Relationships should examine for each college available options for fostering closer ties among the colleges and explore implications of such options. Proposals might affect relationships among specific colleges and programs or among all.

The task force is encouraged to seek immediate approval and implementation of proposals as they are developed.

#### Possible Action Areas

1. Development of mechanisms to facilitate an exchange of professional information and developments among various disciplines.
2. University Forum programs on topics of current interest drawing on the expertise of the various colleges and their faculty. Some of the programs might bring outstanding individuals to the campus for extended periods to interact with persons from all of the colleges and with the Salem community.
3. Co-curricular options for graduate and undergraduate students in the performing and creative arts.
4. Opportunities for faculty to increase awareness of and expertise in other fields of inquiry for application in their own areas of specialization.
5. Development of a university research center on social issues.
6. Development of integrated programs to provide training for civil authorities, journalists, business persons, and those in other fields, who have continual contact with the legal and administrative systems.

#### Designs for Time and Space

**Rationale** — Time and space. Do we use them or do they use us? Ideally, a university has freer use of time and space than any other segment of society. As Willamette has become more institutionalized, however, it appears that our use of time and space has become institutionalized as well. It doesn't have to be that way. We don't have to regard Willamette as a place in fixed space running on a schedule of fixed time. Willamette is an idea, a community of people, a style of learning. It has only the spatial boundaries we choose to impose on it. Similarly, Willamette can use time however we deem it appropriate—the year, the week, the day are ours to do with as we please. The purpose of DESIGNS FOR TIME AND SPACE is to reawaken our sense of freedom concerning these concepts. It is to provide an opportunity for those with ingenuity and interest to evaluate our use of time and our sense of space and to propose alternatives if they find we have been trapped by either concept instead of using them as tools.

**Charge** — The charge to the task force necessarily must be open-ended. Rather than narrow guidelines, the Committee for Institutional Change suggests four categories of possible inquiry. They should not be considered binding nor the only categories. Their purpose is to encourage us to look critically at where and when we do what we do. Careful self-examination, coupled with our own ideas and plans which appear to be working at other institutions, hopefully will provide keys to help us unlock new perspectives on our educational missions and the times and spaces in which they are pursued.

In suggesting DESIGNS FOR TIME AND SPACE the Committee feels compelled to emphasize practical financial constraints confronting Willamette. As in American society generally, it is necessary for us to learn to use what we have more effectively, efficiently and economically. This necessity need not be a liability. It may be an asset to

help us focus attention on "better" and "flexible" rather than just "more" and "traditional." The Committee urges task force members to examine, to dream, to create, and to do so with the understanding that good ideas and liberating designs don't always have to cost a lot.

The Task Force is encouraged to seek immediate approval and implementation of proposals as they are developed.

(Ed note: Committee suggestions on evaluative criteria in regard to time and space—encompassing flexibility, economy, learning impact, and responsiveness to community needs—have been deleted).

#### Category of Inquiry—Time

Willamette's use of the year. Each university must find that which makes it distinctive and educationally attractive. We must consider seriously whether the current organization of semesters is best suited to Willamette's educational strategies. Are there alternatives which would provide students and faculty greater flexibility and better programs while making better use of the physical plant?

Willamette's use of the day and week. Scheduling university activities during the day and week poses chronic problems. There may be 168 hours a week at our disposal, but the cry, "I can't find the time," seems to have found a permanent place in our vocabulary. The following questions may prompt further ideas concerning our scheduling problems.

1. Does the daily schedule prevent any group, on or off campus, from using the university or using it effectively?
2. Does the 50-minute morning, typically 65-minute afternoon class schedule facilitate learning? Have the many deviations from that plan resulted in any educational complications?
3. Can we schedule a time block during the day for committee meetings?
4. Must virtually all extra-curricular seminars wait until evening?
5. If the energy crisis will be keeping us closer to the University on weekends, what kinds of learning activities could occur then?

#### Category of Inquiry—Space

Willamette's use of space. We need to scrutinize places on campus we regard as "learning centers" — classrooms, libraries, living organizations. What kinds of attitudes do they encourage? Are they conducive to learning? What kind of learning? Similarly, we need to scrutinize Willamette's living environment. How can it be made more pleasant? Are living organizations being used effectively to develop human potential? Are our diverse spaces sufficiently flexible to serve diverse needs?

Willamette's "location." Willamette is located in Salem, Oregon. It also is located wherever Willamette people are. There may be more effective ways to emphasize Willamette "off campus," both in terms of the Salem community and in terms of off campus study programs. Similarly, there may be better ways to take advantage of Willamette's physical setting with respect to educational opportunities; sharing of facilities with other Salem groups, and making the campus more inviting to those not currently a part of it.

#### The Committee for Institutional Change

*Russ Beaton, Assoc. Prof. of Economics*  
*Paul Duell, Dean, College of Liberal Arts*  
*R. Sam Hall, Assoc. Prof. of Math*  
*Milo C. Harris, Vice President for Planning & Finance*  
*Noel Kaetner, Prof. of Psychology*  
*Brad King, senior*  
*Sue Leeson, Asst. Prof. of Political Science*  
*George McCowen, Prof. of History*  
*Maggie Mills, senior*  
*Carlton Snow, Assoc. Prof. of Law*  
*Martha Springer, Prof. of Biology*

# GSA to be 'One of a Kind'

*Pieces are coming  
together for the  
Fall start of  
Willamette's unique  
Graduate School  
of Administration*

Fitting all the pieces together to start a new graduate school at Willamette this fall is keeping Dean Stephen H. Archer and others extremely busy, but the unique new concept is starting to take shape.

Four faculty members for the Graduate School of Administration (GSA) have been appointed. Architects are working on final drawings for construction bids on the \$1.5 million Seeley G. Mudd building to house the GSA. Applications are still being received for an initial class of 50 students. And Archer is answering a lot of questions about the GSA, Willamette's single most expensive campaign ever—\$5.2 million. (See related articles on the building and faculty.)

"We'll be one of a kind when we get going," is the quick response from Archer to the frequent question "just how unique is this Graduate School of Administration you're starting?"

A recognized authority in business finance with extensive academic background in both business and public administration, the 45-year-old Archer is directing the final phases of a plan that was proposed ten years ago by members of the undergraduate departments of economics and political science.

The basic idea of the master's degree program is to educate enlightened administrators with an understanding of both private and public enterprise. After serving 17 years on the faculty at the University of Washington Graduate School of Business, Archer has long felt the need for a more sophisticated type of manager who can "get the job done" through the maze of vested interests and "red tape."

"How frequently is heard the exasperation of the business executive over 'those people at the Capitol who just don't know what we're up against?'" asks Archer.

"Or in government, is there an official who hasn't said 'those people out in business have no idea the kind of public pressure we're under?'" he adds.

It is this sense of frustration—evident in the relations between business, labor, consumer, educational, government and environmental organizations—which has led the new GSA to stress "interorganizational understanding."

"That's our prime objective, and our location, governance, curriculum, instruction, and the service opportunities in

**"About one-third of the  
curriculum will change from  
year to year to meet  
changing needs of society  
and current issues"**

the Northwest are what will make us different from the dozen or so generic schools of administration in the country," explains Archer.

The generic schools of administration cut across all areas of management, not only the popular fields of business and public administration, but other fields such as education, law enforcement, health care, and communications for example. In the Western United States, these schools are at the University of Denver and the Universities of California at Irvine and Riverside in addition to Willamette's new thrust in the Northwest.

How well is the GSA being received in the Northwest?

"We've had excellent feedback from business and government leaders, many of whom will be helping us with internships in the second year of study, and we've generated about 400 inquiries from undergraduates and present junior executives who are looking for a unique avenue to career advancement," answers Archer, who has been on an extensive speaking tour around the Northwest.

Full time students can complete the program in two years, but the GSA will also cater in the future to part time students, present managers who want some refresher courses, students working for a combined law and administration degree, and people participating in seminars and workshops which the GSA expects to sponsor periodically.

The curriculum will be characterized by its flexibility after a first year that is uniformly structured to provide a basic groundwork in the concepts and analytical skills germane to all administrative jobs. About one-third of the curriculum will change from year to year to meet changing needs of society and current issues, predicts Archer, and a great emphasis will be placed on studying and working through actual operational problems connected to the students' individual career objectives. All graduates will be required to complete an internship or research paper, and most will participate in a final semester seminar in business-government relations.

Archer and his new faculty met in mid-March to iron out some matters pertaining to student recruitment, facilities, curriculum, intra-university relations, and give the new professors a chance to scout real estate for moves this summer.

"We're all anxious to get classes going Sept. 3, and it won't be too long before the GSA will be making a significant impact in the area," predicts Archer.



Dean Stephen H. Archer shows Jon Luce, Portland, where the Seeley G. Mudd Building will be constructed starting this summer. Luce, a

1970 graduate of Willamette, was the first student accepted for the new Graduate School of Administration.

## June start planned for Mudd Building

Trustees of Willamette and of the Seeley G. Mudd Fund of Los Angeles have given the green light to architectural plans for the \$1.5 million Seeley G. Mudd building to house the new Graduate School of Administration by July, 1975.

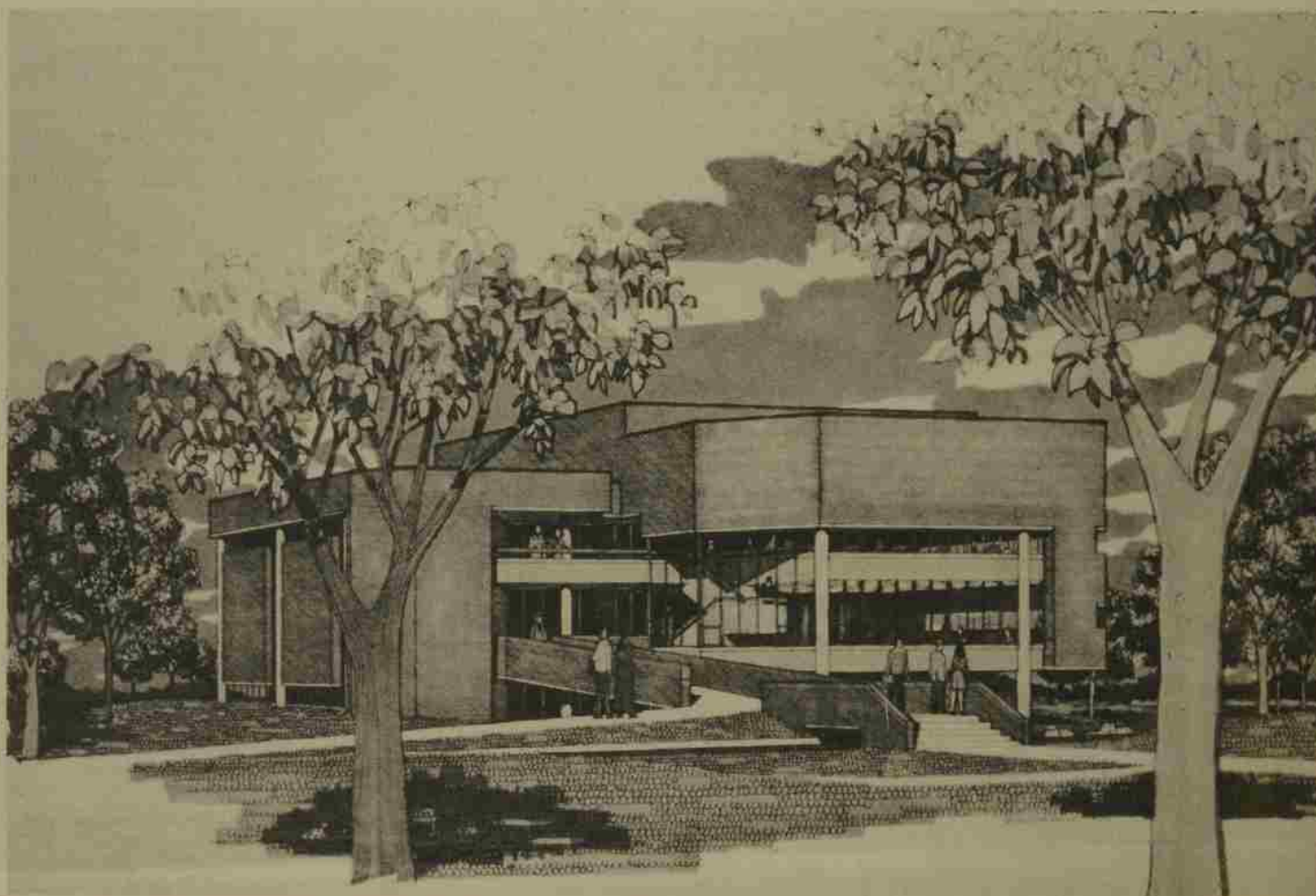
Construction is expected to start in June on the 19,000 square foot, three-level brick structure just south of the Collins Legal Center on the corner of Winter and Trade Streets S.E.

Designed by Payne, Settecase & Smith architects of Salem, the building of modern Georgian style complements existing campus buildings. The \$1.5 million capital expenditure—of which \$1 million was a challenge gift of the Seeley G. Mudd Fund in November, 1971—covers building cost, equipment, landscaping and parking. Another \$3.7 million is to be raised as endowment for the GSA. Through mid-April, gifts and pledges toward the GSA totaled \$2.2 million.

The Mudd building will house a computer center, administrative offices, lounge and student body offices on the lower level. The upper two levels will accommodate offices for 10 faculty members, a library for 25,000 volumes, and five auditorium and seminar classrooms, some with special convertibility features to accommodate varying sized groups.

Total funding for the construction is expected to be in hand by June 30, 1974.

One of the non-capital gifts to the GSA fully endows one faculty position. Named in honor of Guy F. Atkinson, the endowed chair is a gift from the family members of the late industrialist who founded one of the world's largest construction companies in his name in South San Francisco. His son, Geo. H. Atkinson, is chairman of the Willamette Board of Trustees and chairman and chief executive officer of the Guy F. Atkinson Co.



Architect's rendering of the Seeley G. Mudd Building to house the GSA

## GSA Profs show quality, diversity

The four new associate professors who will initiate instruction in Willamette's new Graduate School of Administration this fall represent different areas of expertise to tie in to the blend of business and public administration planned for the new master's degree program.

The four and their specialties are:

- Dr. Jann W. Carpenter, 38, administrative law and business-government relations, presently associate professor of economics and business at Central Washington State College;
- Dr. Marc G. Choate, 34, finance and business economics, presently assistant professor of finance at the University of Massachusetts;
- Dr. Bruce L. Gates, 29, public and health care administration, presently assistant professor of public administration at the Maxwell School of Citizenship and Public Affairs of Syracuse University;
- Dr. Russell J. Petersen, 37, accounting, presently assistant professor of accounting at Duke University.

Dean Stephen H. Archer is greatly pleased with the caliber and diversity of the new faculty which will be welcoming between 50 and 75 first-year students for the start of classes Sept. 3.

Carpenter is not a newcomer to Salem. He was assistant attorney general in the Oregon Department of Justice taxation division from 1965-67. He holds two degrees from the University of Oregon, a B.S. in business and technology and the J.D. from

the College of Law, and two from the University of Washington, an M.B.A. and Ph.D. from the School of business.

Choate holds three degrees from the University of Washington. He recently completed a study in conjunction with the Massachusetts School of Engineering on the economic and technical aspects of pollution-free energy generation, and he has been a consultant on hospital administration.

From a degree in aeronautical administration from Princeton, Gates branched into public administration through a Ph.D. from the University of Pittsburgh Graduate School of Public and International Affairs. Among several consultant jobs has been Gates' work with the World Health Organization.

Petersen holds degrees from Oregon State (B.S.) and the University of Oregon (M.S.) with his Ph.D. in business administration from the University of Washington. A certified public accountant, he has completed an impressive list of articles for professional journals and he serves on the editorial board of The Accounting Review magazine.

## Managers will improve skills at GSA Communications Seminar

A seminar on communication skills for managers will be sponsored by Willamette University's proposed Graduate School of Administration May 17-19 at the Inn at Spanish Head in Lincoln City.

Entitled "Toward Better Humanagement," the seminar will emphasize the importance of human understanding and feeling in the area of communications in management at any level.

Six distinguished scholars and practitioners will serve on the seminar faculty, exploring the areas of intra and inter-personal communication and intra-organizational communication. They will address themselves to problem solving and practical suggestions toward better "humanagement."

Dr. Dominic LaRusso, professor of communications at the University of Oregon, will explore the areas of intra-personal communication. He has participated in many seminars and workshops in communications and management.

Willamette University's winner of the 1973 teaching excellence award, professor of philosophy Dr. Jerry Canning, will

keynote the section on inter-personal communication. He has participated in several institutes on developing leadership skills, human relations, and transactional analysis.

A woman Ph.D. in organization psychology, Dr. Barbara Karmel, professor of organizational behavior at Oregon State University, will offer ways to overcome barriers to communication in organizations. She is director of the Oregon State Management Development Program and an experienced speaker and author on organizational dynamics.

Three other seminar keynoters are Willamette University President Robert Lisensky, Willamette's Director of Learning Resources Dr. Wright Cowger, and Mrs. Leise G. Robbins Regional Director of the Communications Institute at the Training Center of the U.S. Civil Service Commission in Seattle.

Dean Stephen H. Archer of the new Graduate School of Administration is serving as seminar coordinator.

Reservations, limited to the first 40, must be in to him by May 2. The seminar fee is \$115.



Carpenter



Choate



Gates



Petersen

# On the Willamette Scene—Campus Briefs

## Willamette in the World

Education with a foreign flavor continues to attract full complements of students. While 20 students complete the Willamette Semester in France this spring at the University of Caen, two dozen more are being briefed for a fall visit to Costa Rica. Ireland is on the horizon for spring.

In a little more unusual fare, seven students will accompany earth science professor Harry Rorman to Australia this summer for a 45-day study of geology, geography and the environment down under. The seven took Rorman's "Foreign Field Study" course offer "to go anywhere six to nine students agree upon."

Political Science professor Ted Shay will accompany the students to Costa Rica where headquarters will be the Costa Rican-North American Cultural Center and the University of San Jose for 10 weeks. Then for five weeks the group will take a comparative government and economy study tour to the four other Costa Rican countries of Nicaragua, Honduras, El Salvador, and Guatemala. English professor Carol Long is planning the Ireland study. Willamette students had earlier completed Willamette semesters in England, Mexico and Japan.

## How High Inflation?

Two voucher checks found behind a shelf in an old vault in Gatzke Hall on campus provide a brief glimpse at labor rates near the turn of the century. One dated April 5, 1907 drawn to Melvin R. Hoff was in payment "for piling wood four and two-thirds hours at fifteen cents per hour (70c)." The other dated June 30, 1908 to Ray R. Price covered a full day's work "nine hours work cleaning office \$1.80 and Bon Ame 10c." Of such importance were these payments that each check bears the signatures of four people, the president and secretary of the Board of Trustees and two members of the auditing committee who "examined and approved." What would the money be worth in today's dollars assuming the checks had been deposited in savings and compounded at three per cent interest for 67 years? Only \$5.07 and \$16.66 respectively. Question: Could Mr. Hoff have bought more for 70 cents in 1907 than he could for \$5.07 today?

## Dean of Music & Theatre Among Administrative Changes

The appointment of Dr. Charles M. North as Dean of the College of Music and Theatre is but one of several administrative changes for the next academic year. President Robert Lisensky re-aligned several positions in the development and admissions areas "to take full advantage of individual strengths." (see column on personnel changes). Dean North will succeed Acting Dean Richard Stewart who will return to full time teaching in the music education department. A former professor at Alaska Methodist and Eastman School of Music and presently chairman of the music graduate program at Western Washington State College, Dr. North will assume duties Aug. 15.

## "Names" Drop By

Several distinguished visitors have attracted considerable attention on campus this spring, and four more are due for Alumni-Commencement Weekend May 11-12. The Atkinson Fund sponsored three

noted scholars, Editor Norman Cousins of the Saturday Review-World; Anthropologist-Author-Poet Loren Eisely; and retired Associate Justice of the U.S. Supreme Court Thomas C. Clark. All three attracted large audiences and the latter made many friends in a two-week stay at the College of Law.

The first Northwest Writers Conference in late March attracted such writers as Ken Kesey, David Shetzline, Don Berry, M. F. Beal and Ursula LeGuin, while the poetry sections were lead by William Stafford, Dick Bakken, Richard Hugo, Primus St. John, Philip Dow, Greg Keith and Diane Wakoski. Appropriately, the publishing field was ably represented by alumnus Ken McCormick, senior consulting editor of Doubleday, who addressed a successful banquet of the Friends of the Library.

The Alumni-Commencement Weekend features three noted speakers and an old friend. Oregon Governor Tom McCall will deliver the commencement address at 3 p.m. May 12 and receive an honorary Doctor of Laws degree; Lutheran theologian, historian and author Martin E. Marty is the Baccalaureate speaker at 11 a.m. May 12 (he will receive an honorary Doctor of Humanities degree); and Carl Marcy, recently retired Chief of Staff of the U.S. Senate Foreign Relations Committee, will address the alumni banquet at 6:45 p.m. May 11. The "old friend" is James Corson, Willamette's Interim President from 1972-73 who returns to receive an honorary Doctor of Humane Letters degree.

## Team Handball Squad Invited to Nationals

An 11-member Willamette team handball squad is one of 16 teams invited to play in the National Team Handball Championships at Monmouth, New Jersey May 11-12. Willamette's team is coached by former Olympic team handball player Dan Foster, a junior, and graduate student Bill Fleming who played on the defending champion Adelphi University team. Team handball is the sport that Germany added to the 1972 Olympic Games. A goalie protects a two by three meter net while six opponents traverse the 20x40 meter court to throw a "cantaloupe" size ball past him. It is a fast moving game that is growing in popularity in this country.

## Gift Highlights

A \$100,000 endowment gift for scholarships and loans, notice of a foundation grant, and some volunteer fund-raising by students highlights recent development progress.

The donor of the large endowment gift wishes to remain anonymous. However, President Robert Lisensky expressed "a deep sense of gratitude" to the individual for what is one of the largest anonymous gifts to the University in recent years. Half of the income from the gift will be used for scholarships to "outstanding students" in need of aid, the other half for student loan funds.

Notice of an Aug. 1 grant was given by the Louis W. and Maud Hill Hamill Foundation of St. Paul, Minn. which will provide \$20,000 plus training, workshops, literature and consultant help in developing a stronger program in deferred giving at Willamette over the next two years.

The initiative of students to help with the funding of the Lestle J. Sparks Center led to a campus-wide competition to get dollars for the new physical education and recreation center. Pi Beta Phi sorority won a free steak dinner for topping the effort on an average gift basis.

Willamette's 10-month gift total stands at \$1,389,022, still within reach of the \$1.7 million goal for the year.

## Personnel Changes

### APPOINTMENTS

**Dr. Charles M. North**, 48, Dean of Music and Theatre, from chairman of music graduate program at Western Washington State; D.M.A. from Eastman School of Music, University of Rochester. Effective Aug. 15.  
**Daryl James Evans**, 33, Business Manager, from controller, University of San Francisco. Effective April 15.  
**The Rev. William Young**, 28, Instructor in Religion, from Ph.D. studies at the University of Iowa; M.Div. from McCormick Theological Seminary; ordained Presbyterian minister. Effective Aug. 27.

### RETIREMENT

**Dr. Norman Huffman**, Professor of Religion, chairman of religion department and professor at Willamette since 1946. Effective May 31.

### RESIGNATION

**Dr. Otto Mandl**, Professor of German, at Willamette since 1962; former chairman of the foreign language department. Effective May 31.

### RE-ALIGNMENTS (Effective June 1)

**Harry Manley**—Vice President for Development from Provost.  
**Paul Duell**—Dean of the College of Liberal Arts to coordinate all four colleges of the University.  
**R. A. Buzz Yocom**—Dean of Academic Services from Dean of Admissions and Registrar; to supervise admissions, registrar, continuing education, internships, learning resources and summer programs.  
**Frank Meyer**—Remains as Director of Admissions with full responsibility for undergraduate admissions program.  
**Albert Berglund**—Registrar from Associate Director of Admissions.  
**Teresa Krug Hudkins**—Director of Alumni Relations from Admissions Counselor and Assistant Director of Alumni Relations.  
**Guthrie Janssen**—Planned Gifts Director (part-time) from Director of Development. (Effective March 1.)

### PROMOTIONS (Effective June 1)

(new title and year of original appointment)  
**Larry D. Large**—Vice President for Student Affairs (1972)  
**Stanley Butler**—Professor of Music (1950)  
**Dr. James Hand**—Professor of Religion (1964)  
**Dr. Kenneth Smith**—Professor of Political Science (1963)  
**Dr. Dallas Isom**—Professor of Law (1968)  
**Dr. Ross Runkel**—Professor of Law (1969)  
**Dr. Donald Turner**—Professor of Law (1971)  
**Dr. Gerard Bowers**—Assoc. Prof. of English (1971)  
**Dr. Wilbur Braden**—Assoc. Prof. of English (1970)  
**Stephen Prothero**—Assoc. Prof. of Mathematics (1963)  
**Dr. Claudia Burton**—Assoc. Prof. of Law (1971)  
**Virginia Botham**—Asst. Prof. of English (1968)

## SABBATICALS

Fall semester:

**Maurice Brennen**, Assoc. Prof. of Music, to study English band music and music therapy programs in England and Europe;  
**Stanley Butler**, Assoc. Prof. of Music, to study contemporary piano music analysis at the University of Southern California.

Spring semester:

**Paule Drayton**, Assoc. Prof. of French, to complete Ph.D. thesis; **Dr. James Hand**, Assoc. Prof. of Religion, to continue his study of the Japanese language; **Dr. Robert Purbrick**, Prof. of Physics, to write a text or laboratory manual; and **Dr. Ted Shay**, Prof. of Political Science, to study the merging role of China in world and Asian affairs.

## LEAVES OF ABSENCE

Full year:

**John Paulus**, Prof. of Law, to teach at Hastings Law School; **Francoise Gouery Richardson**, Asst. Prof. of French, to study for Ph.D. at University of California at Santa Barbara.

Spring semester:

**Stanley Butler**.

## ACADEMIC TENURE

**Dr. Russell Beaton**, Assoc. Prof. of Economics (1971)  
**Dr. James Cook**, Assoc. Prof. of Piano and Music Theory (1970)  
**Dr. Daniel Montague**, Assoc. Prof. of Physics (1968)  
**Richard Sutliff**, Asst. Prof. of English (1967)

Address Correction Requested

Willamette University  
Salem, Oregon 97301

WILLAMETTE SCENE