

allah

WILLAMETTE UNIVERSITY 1950



Published by the
Associated Students of
Willamette
University
Salem, Oregon

Wallulah

LUDENE HARGRAVE, *Editor*

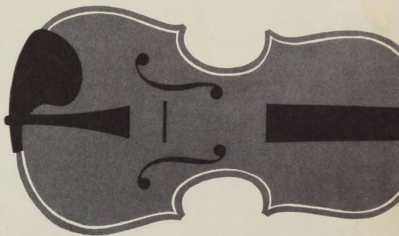
JIM MILLER, *Business Manager*



See deep enough, and you see musically; the heart of nature being everywhere music, if you can only reach it"

—Carlyle





The Work and Play of College Life

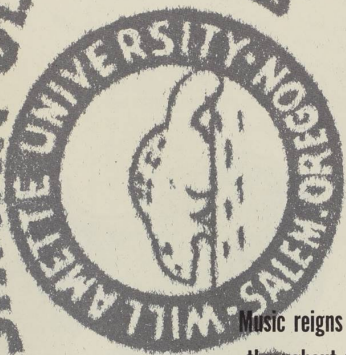
Complete in Willamette's Music . . .

To the scholar it is a study which opens up the understanding of vast horizons in the lives and works of the world's greatest musicians.



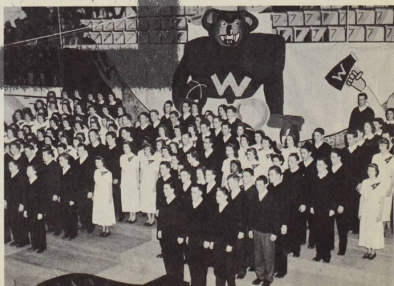
FRESHMAN GLEE

48



Music reigns over the campus
throughout the school year

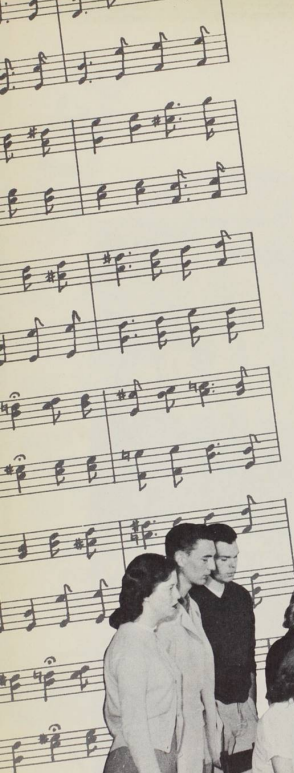
19





Music is the universal language during Freshman Glee and song fests held between living organizations. In these activities students learn the application of music in harmony, precision, originality and—friendly rivalry.

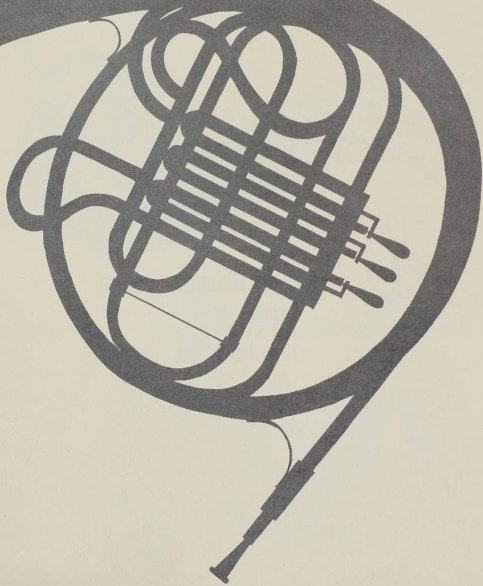
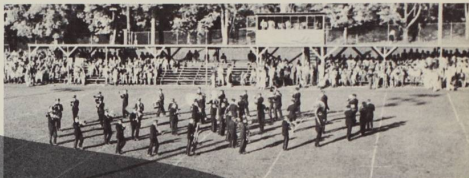




Music is the Spirit of Willamette

It is participation in band and orchestra that gives added service to the school at athletic events and drama productions. It is the relaxation and enjoyment provided in community singing during leisure time, and brings together students from all fields of academic life.





CONTENTS

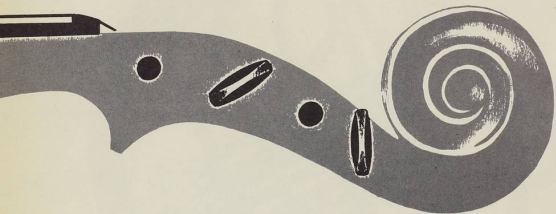
Social Activities . . . page 9

Sports page 59

Faculty page 89

Seniors

Honoraries



Student Activities . . . page 137

Clubs

Living Organizations . . . page 185

Index

Advertising

SOCIAL ACTIVITIES



Students line the library in order to register for another school year



Registration Signifies Busy Year for Bearcats

Each year at Willamette finds old students as well as new, registering for classes which bring them one step closer to graduation and a vocation.



Registering students find faculty members helpful in aiding them to select their courses



Three Freshmen coeds smile happily at the thought that registration is over



MR. JORY, registrar, sees that students are supplied with proper registration blanks

Students find that despite the confusion and worry prompted by registration, their attending Willamette is well worth it.

Blood tests, as a measure of safety, are a "must" for incoming Frosh and new students



Next on the agenda is the university bookstore where students purchase the text books and supplies





The Chi Omegas started out a new year by preparing for fall rushing functions



Rushees are honored by a banquet at the Alpha Chi Omega house

Fall Rushing

Fall rushing is always a matter of great importance to the incoming Freshman girls and the sororities on the campus. The sororities plan various rushing functions which all girls interested in rushing attend.



Judge RAY LOTER passes strict judgment on Freshman culprits



Two Freshmen must pay penalty of reverting to their childhood by bottle-feeding each other

Kangaroo Kourt

Once every year upper-classmen have their day, when the Freshmen rule-violators must pay the price for their crimes. They are tried for anything from just existing to merely being a Frosh and are always found guilty by the stern lettermen judges.



CAROL BRADLEY is punished by having to make love to campus canine lover Schneebles



Committee heads DON BENSON,
STAN ASCHENBRENNER,
JACKIE CHUTE



Homecoming begins at 4:30 a.m.
for the Frosh when they rake
fallen leaves on campus



COACH STACKHOUSE represents
the team at rally held at
Bush's pasture



Blue Key members and their newly
established trophy representing
Lewis and Clark-Willamette rivalry



Couples enjoyed an evening dancing to the music of Freddy Keller's orchestra at Homecoming dance

Homecoming

Homecoming 1949-50, found Willamette once more welcoming alumni back to the campus to attend the usual main events including the football game, various contests, an alumni reception at Baxter Hall, and the annual Homecoming dance.



BO BROOKS, Blue Key's Miss Homecoming of 1949, presents trophies

*'A Kick In The Rear For The Pioneer'
Carried Through Signs*

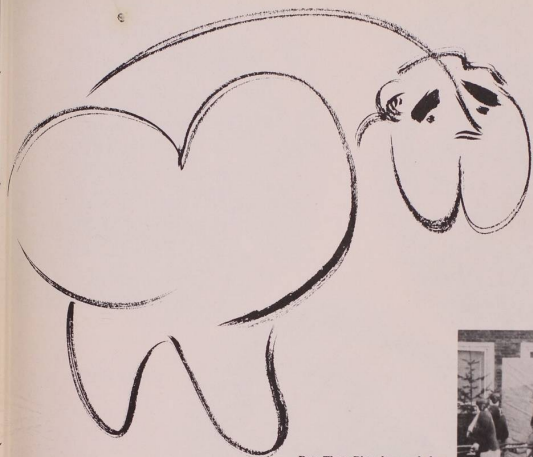
The annual sign contest is an event in which all living organizations effectively portray the Homecoming slogan by constructing a sign which is erected on the campus. The winner is chosen and awarded a trophy after originality, adaptability to theme, and artistic quality have been considered by the judges.



Runner-up sign contesters
were the Pi Beta Phis



For the Chi Omegas, Homecoming
brought the victory of first
place for their sign



Beta Theta Pi took second place in men's sign contest



Sign winners in the men's division were members of Phi Delta Theta



Delores Fisher



Shirley Griffen



Sweetheart of Sigma Chi

Jean Kell



To the strains of the Sweetheart Song, she is escorted past an admiring audience

Annually the Sigma Chi chapters on campuses all over the country hold their "Sweetheart of Sigma Chi" contest in a search to find the one who is to reign as their "dream girl" for the year. This year Delta Zeta's choice, Jean Kell, who was selected from three finalists, will have a chance to participate in the national contest held during the summer. All three court members were presented with lovely gifts and scrapbooks with pictures of the event.

The trophy is presented to the newly crowned Sweetheart



Blonde, blue-eyed JEAN KELL officially becomes the "dream girl" of Sigma Chi, as a crown of white roses is placed upon her head



Fellows dressed as mules and other members of the winning Junior class are ready to eat

Chairman DAVE BECKETT welcomes competing classes, the team and guests



Whip Whitman Banquet

Class competition at its "loudest" peak is a fitting explanation for the Whip Whitman Banquet. Here the four classes present original yells to vie for first place and a cup, plus arousing spirit for the game.



New at the game, the Frosh class proved they were capable Willamette spirit boosters

Seniors "whipping" a supposed
Whitman Missionary



DAVE BECKETT presents trophy
to Junior class prexy,
JACK BROWN



COACH STACKHOUSE says
a few words in behalf of the team





JACK GUNN was elected as
OFCL President for next year



A.S.B. president RUSS TRIPP,
host, welcomes **ART JOHNSON,**
O.F.C.L. president



OFCL Holds Conference Here

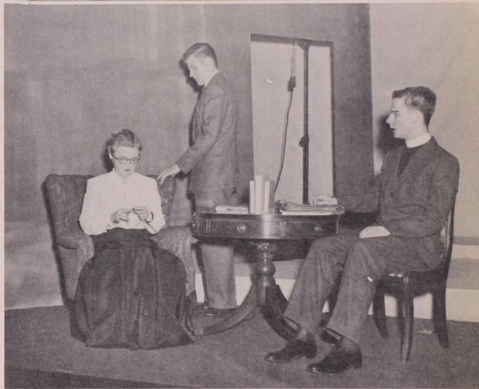
The Oregon Federation of Collegiate Leaders has been organized for approximately twelve years with the purpose of bringing together suggestions which will aid in efficient student government. At this meeting, there were over sixty-five delegates consisting of student body officers of Oregon colleges, who discussed problems of student government.

**From a banquet speaker
delegates gain insight
into good government**

**Students attending the
convention enjoy banquet
and speakers**



Drama students at try-outs for play casting



A scene from "Ghosts", one of the department's productions

Drama

The drama department, under the direction of Ruane Hill, presented three entertaining productions with outstanding and talented casts this year. Play try-outs, practices and rehearsals were found to be a lot of hard work but all added up to excellent results.



Trucks loaded with hay take couples to the barn where the dance was held



At the dance, couples danced in a hay loft, had refreshments and entertainment

ASWU Barn Dance

This year the Student Body sponsored barn dance turned out to be a great success with students spending the evening dancing in a hayloft. Trucks filled with hay were obtained which served as transportation to the barn, a short distance from town. Refreshments were served and various forms of entertainment were provided.

Senator Morse Visits Willamette

The Willamette Campus was honored with the visit of Senator Wayne Morse when he arrived in Salem to file for his candidacy for United States Senator. He was well-received by a large student turn-out and his speech was enlightening to the many who were interested in the campaign.



Student Body President,
Russ Tripp, welcomes
Senator Morse to the campus



The Senator gives a brief
outline of his political views



"The girls" take us back to the Gay Nineties with a snappy rendition of the Can-Can



Songs typical of the old Barber Shop Quartets were sung by CLIFF GREGG, JOE BRAZIE, PHIL HAMMOND and DICK COLE



GLENNIS ALLEN,
GRACE ASHFORD and
BERNICE ISHAM sing
their rendition of a
popular selection

A comic black face skit was
effectively carried out by
BOB ROBINS, TOM YATES
and JOE FORMICK



DON CARPENTER and
JACK BROWN with their combo
kept audience laughing
with their musical antics

Varsity Varieties

Varsity Varieties, a student-sponsored talent show, provides entertainment every year for hundreds of Salemites and college students. Completely under student direction, the program is filled with humorous skits, singing, dancing and personality characterizations.

House Dances

An "Undersea Fantasy" held SAE's and dates spellbound while they danced to smooth music



Delta Gamma's and dates enjoy refreshments at St. Patrick's dance held at chapter house



"Penthouse Serenade," sponsored by Baxter men, where the couples danced to their heart's desire

Pi Phi's and their dates dance in setting of "Hearts in Wine and Blue"

Couples dance at costume party held at Delta Gamma house

Living Organizations Find Dancing a Popular Pastime

Dancing at Willamette provides an ample share of entertainment for students. During the year a number of dances are held at the various living organization and always have large turn-outs.



Student Body Christmas Party

At the annual Christmas party, sponsored by the Senior class, couples came dressed in pajama tops and jeans to spend an evening dancing and see something new and different added in the crowning of "Miss Pajama Top of 1949."



Everything from ski sox to slippers, including ordinary stockings, completed this Christmas party costume



PHIL SHAW and
CLEORA NORWOOD enter
through a holly wreath



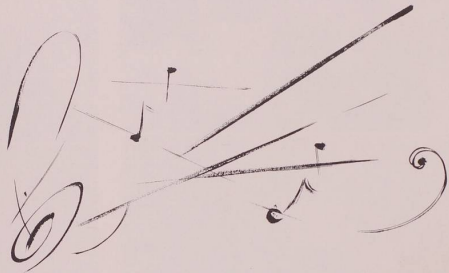
Entertainment was provided by the
"popular" German band
at intermission

A Cappella Choir's Annual Capitol Caroling

One of the main and most impressive activities of the A Cappella Choir is found in its Christmas caroling. Besides caroling, the student group takes part in Thursday chapels, goes on numerous tours during the year, and gives concerts throughout Oregon.



Caroling choir members marching through capitol building



The choir singing a number of carols on steps inside the capitol building





Underprivileged children were given a Christmas party by the Phi Deltas



Relaxation and refreshments after caroling were enjoyed by Alpha Chis at the Beta house

Entertaining Under-privileged Children and Caroling Exemplified Yuletide Spirit at Its Fullest

Messiah

The Messiah is an annual presentation by the Salem Oratorio Society, composed of townspeople and Willamette students, and directed by Dean Geist of the Music School. Each year selections from Handel's Messiah are presented by the group prior to Christmas to promote the holiday spirit and to give its audience an appreciation of musical expression found in such a performance.



Messiah performers take a time out during intermission



DEAN GEIST directing one of the selections given by the group



Leading soloist performers take a final bow at the conclusion of the program



Candlelight and soft music provide atmosphere even for sitting this one out

Couples relax with a slow one after an peppy square dance

Sophomore-Junior Class Party

In place of the annual joint Junior-Sophomore beach party this year the two classes shared expenses and held a dance. During the evening, couples tried their ability at square dancing and had refreshments.





Students watch as faculty enter church for chapel service

ASWU president, RUSS TRIPP, places wreath on grave of W.U. founder, Jason Lee, as President Smith and descendent of Jason Lee stand by



Founders and Benefactor's Day

Willamette University was honored to have as speaker on its Founder's and Benefactor's Day, a distant relative of the Jason Lee who founded the University 108 years ago. Students found it an impressive sight to see the professors in caps and gowns form the processional.

Faculty, choir, and students just before the service begins





Left: SHIRLEY DEAN and RAY PEARSON seem to be taking advantage of the orchestra's mellow music

Couples dance in a dreamy atmosphere to the music of the Wayne Muesy Combo

An impish elephant keeps a watchful eye on SHIRLEY CLIFFORD and JOE BRAZIE as they dance by

Interdorm Formal

"Blue Champagne" was the theme of the annual Interdorm formal held at the Labor Temple. Miniature pink elephants rollicked among the colorful bubbles while couples relaxed and danced to melodious strains.





DOROTHY WOOD applies make-up on DAVE PLACE before he is ready to give his performance.

Ghosts

During Religious Emphasis week on campus, one of the highlights on the program was the effective presentation of Frank Ibsen's "Ghosts," by a talented student cast under the capable direction of Ruane Hill.



One of the biggest jobs, that of being costumed and putting on make-up, requires patience and time



MARION SPARKS and PHIL HAMMOND, characterizing major roles, are engaged in serious conversation



The A Capella choir, director Dean Geist and publicity director, Travis Cross



Here's the way it sounded to the radio audience—it wasn't that bad!

Choir's M.B.S. Broadcast

It was a tense period after the day of auditioning but the day the A Cappella choir actually recorded for the nationwide broadcasting system the tenseness was even more evident. This privilege and honor only strengthens the conviction that our A Cappella choir is one of the most outstanding in the Northwest.



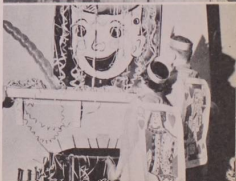
Chi Omegas and dates dance to Wayne Meusy's combo at "White Carnation Ball," given in honor of seniors

Alpha Chi Omegas and their escorts pose for a picture between dances



Spring Dances

Even the Spring is highlighted with more formal and casual dances. College students seem never to tire of decorating and planning for such occasions.



"The King and Queen of Hearts" at the Delta Gamma costume dance



Three faculty members "take five" before the big show begins.

Faculty-Varsity Basketball Game

Each year the faculty and lettermen join forces to stage the biggest and "bestest" basketball game of the year. The proceeds from this hilarious event finance the lettermen's biggest project of the year, the Lettermen's Ball, where a Varsity Queen is selected from among the Freshmen women to rule with her four princesses.



"Caveman" Stackhouse, complete with bone, drags his "cavewoman" across the floor in true primitive fashion



The faculty team in their uniforms wait for the game to begin

The energetic rally squad for the winning faculty squad brought the spirit of the cheering section to a roaring peak





Marie Corner

Dona Mears

Del Fisher

Muriel Baney

Varsity Queen

Shirley Griffin



Freshman Glee

Willamette University students, their parents, relatives and friends viewed the 42 annual Freshman Glee this year. Full of the spirit and tradition of the University, the song-filled evening thrilled its audience, especially the winning

Junior class. Against the background of a giant bearcat the class gave its rendition of their fight song and claimed the coveted banner for the second time.

DUANE DENNY, Glee Manager



Executive committee discusses the plans for Freshman Glee



CHARLIE NEE entertains during intermission with a few vocals



Members of the Frosh committees who made Glee the success it was,

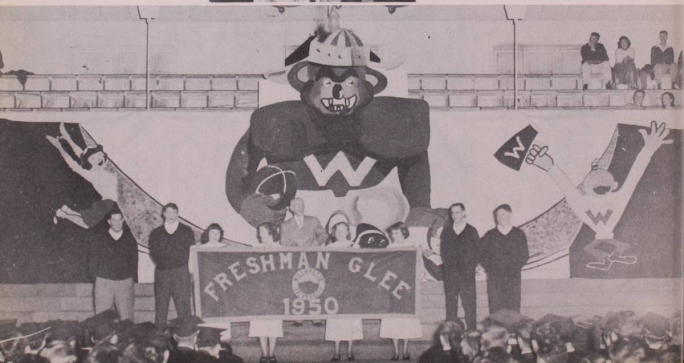


Above: Juniors form a battle ax singing "Forward Mighty Bearcats"

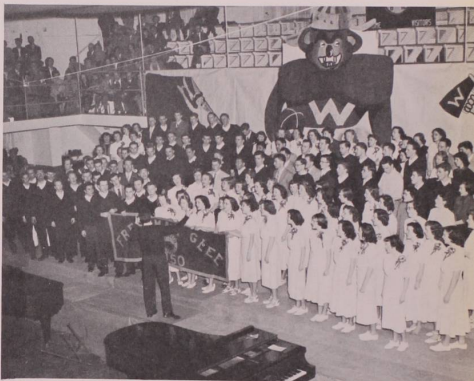


Left: Junior committee leading the class to a victorious climax: JANET STARK, MARTHA BENARD, ART DIMOND and MARGIE GUICE

HUGH NELSON, WALLY RICHARTZ, MARY JANE PHILLIPS, MARIE CORNER, JEAN STEWART, MARY ELLEN PHILLIPS, RALPH BOLLIGER, and GEORGE PORTER guarded the banner while Professor Clark announces the decision



Juniors and Frosh Cop Top Honors



Juniors take possession of banner and re-sing their song and those from preceding years



"On To Victory" sung by the Freshman Class won second place for them



Forming a megaphone and singing "Fight On Willamette," the Sophomores placed third



The Senior's song, "The Cardinal and the Gold," and formation led them to the millstream Blue Monday



Shivering, but good sports, the Seniors find the millstream much colder than they expected.

Blue Monday

Blue Monday found many dejected souls gloomily paying off bets they made in confidence that their's would be the winning class, while victorious Juniors nonchalantly viewed the situation. Spectators were not disappointed in the weather for it lived up to its past records by raining all day.



"Alms for the blind." One Frosh pays off her bet



DICK UNRUH shows off his stylish new wardrobe. Lovely material!

BILL BISSELL enjoys his breakfast at a sidewalk open-air cafe

Although this isn't California or June, we still have sunbathers



They say an egg shampoo is good for one's hair



Never underestimate the power of a woman, even if she is your sister



Left: Boy Scout WASHBURN cooks breakfast in front of Eaton Hall



Soph. prexy, SHERM BLISS vowed to eat his hat if they lost. They did—he did!



Prof. Ludden gets into the swing of Blue Monday as a result of an unwise glee bet

May Weekend

May Weekend, one of the most important events on the campus, saw Willamette play host to many visiting high school guests as well as townspeople and its own students who attended the various activities. Topping the weekend's program were a barbecue, inter-fraternity and the inter-sorority song contests, the coronation ceremony, a play entitled "The Man Who Would Be Sick," and a formal ball honoring the queen and her princesses.



Each of the four classes spends an hour gathered around to watch the fire in the barbecue pit



Left: To avoid rain drops and to view the entertainment, students and guests eat in the grandstands

DON CARPENTER, BILL CHURCH, JACK BROWN and BILL BISSELL give their rendition of "Chinese Mule Train"



Right: Hungry students stand in line to heap their plates with food prepared for the barbecue lunch



Left above: Sophomores prove their strength over the Freshmen as they win the tug-of-war contest

Above: A Frosh nearly reaches the top of the greased pole, but Sophs regain control and win



Right: The would-be sick man introduces to his family the suitor he has chosen for his daughter to marry

Below: "The Man Who Would Be Sick" showed excellent casting with student talent which made every scene outstanding in characterization





Above: After presenting their selections, the members of Beta Theta Pi, led by ART DIMOND, claimed the spot of first place



Above: The Delta Gammas, led by DORIS WALSER present their three numbers which brought them out first

Below: The Queen and her court attend the May morning breakfast held at Lausanne, sponsored by the Y.W.C.A.

Bottom: JACK BROWN, representing Blue Key, took charge of the guest registration book at the breakfast

Right: Members of the various sorority and fraternity singing groups await their turn to sing

Below: Guests and Willamette students enjoy a delicious breakfast served by the members of Pep Cats



May Weekend Queen

Polly Pollock



Betty Ferguson



Avis Roberts



Above: Carrying the traditional daisy chain, Sophomore women enter to herald the way for the queen



Right above: "Make way for the Queen" as heralders enter singing and leading the procession



Right: Retiring Queen Edith places a crown of white carnations on the head of smiling Queen Polly I



Left: May Weekend Manager **DICK ENDSLEY** welcomes all guests to the campus and festivities



Left: Junior members of the court included Jay Gustafson, the crown bearer; Betty Peg Gates and Dianne Pollock, niece of the queen, as flower girls

Below: Queen Polly graciously accepts the "Key to the City" from Charles Barkley, representing the Mayor of Salem





Left: Junior women gracefully and flawlessly weave the colorful streamers as they dance in and out around the Maypole

Maypole Dance and Sing Awards Add Thrills to the Weekend



Queen Polly presents the trophy to DORIS WALSER of Delta Gamma making it the second year this group has won

BERNICE ISHAM of Alpha Chi Omega accepts second place trophy which is the first time second place winners have received recognition

Top: To ART DIMOND, leader of Beta Theta Pi, goes first place trophy for the third consecutive year

Below: JOHN KAEMMER, Baxter Hall's leader, happily accepts the second place trophy as a reward for the group's outstanding presentation





The complete royal court stands as Queen Polly is about to take her place on the throne before the crowning ceremony begins



Following the queen, the recession of the attendants took place as they were escorted to their cars

*Queen's Tea Held at the University House
Entertains Many Guests*



Guests attending the tea at the President's House were able to go through the reception line and to meet the royal party in person



Left: Hundreds of students and guests enjoyed dancing at the May Weekend formal ball

Below: The queen, her princesses and their escorts enjoy a moment of relaxation at the dance



Activities Galore Keep May Weekenders Busy

The perfect ending to an exciting and gay May Weekend was found in the formal dance held Saturday night centered around the theme "Japanese Gardens." The oriental setting with soft music gave everyone a chance to relax and recall the past festivities.



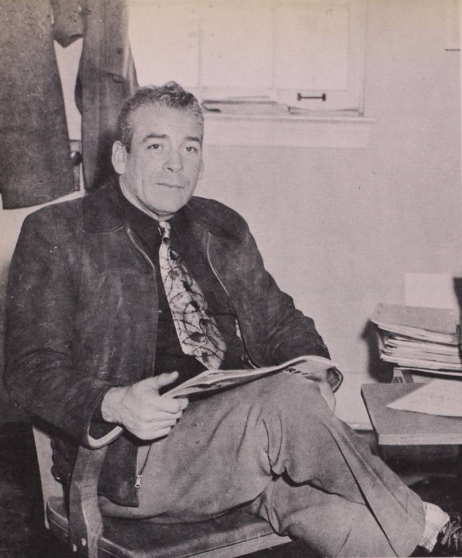
Queen POLLY and Princess BETTY FERGUSON are escorted to church by AL FEDJE and LOREN RANTON

And So It Ends . . .

We thought Spring would never come, but when it finally did, we were almost too busy to fully enjoy it. Term papers, last minute cramming, and finals followed so closely on the heels of May Weekend that when we stopped to catch our breath it was all over and we were headed for a summer of work, play and anticipation for the coming year—a coming year of only memories of W.U. for some, to others a year of collegiate life, to all a future full of promise.







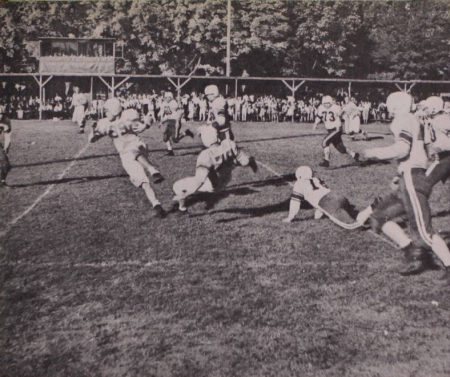
Head of the football staff, Chester R. Stackhouse sits in office, planning dire things for Cat opponents.

Football Coach Stackhouse Faces Problems, Looks Ahead

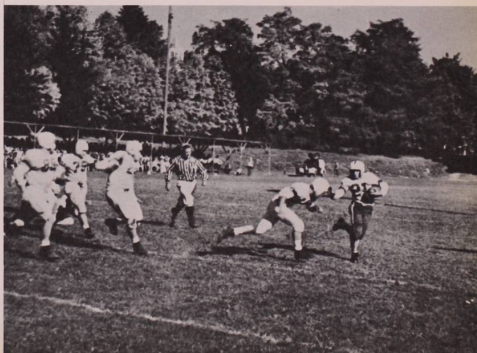
Coming to Willamette from Michigan, Chester R. Stackhouse faced the problem of all new coaches. His no-huddle, T-formation system found trouble in clicking consistently due mostly to the fact that it was a new style for Bearcat gridders. All in all, "Stack" entertains no doubts about the future, looks to better things ahead.



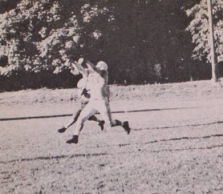
Assisting Stackhouse both on and off the field are, front row, left to right: Les Sparks, Jack McCarty, Dave Morris, Lyle King, and Ernie Duvall; back row: Ambrose D'Eagle, John Lewis, Jim Johnson, Chester Stackhouse, and Buck Smith.



Back Keith Sperry racks up another Bearcat first down against foes from Chico State.



Bearcat defender stops this Chico State play for a two-yard loss. The Cats won 7-0.



Lewis and Clark pass-play is broken up by alert Bearcat.

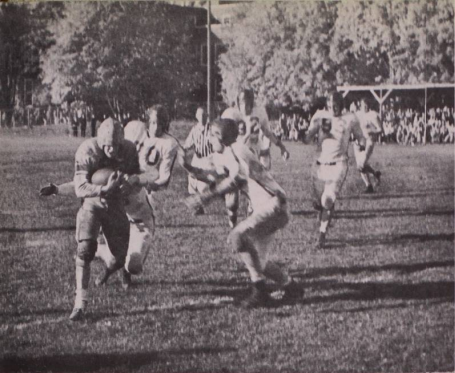
Willamette's Bearcats lost their second Homecoming game in a row, but not before putting up a stiff fight and a great display of spirit. Our Bearcats lost the first half to the Lewis and Clark Pioneers, won the second half 7-0. Net result: we lose, 20-7.

The Bearcat Scoreboard

Willamette 0	U. of Idaho....	79
Willamette 32	E.W.C.E.	0
Willamette 7	Chico State....	0
Willamette 14	Col. of Ida....	41
Willamette 0	C.P.S.	27
Willamette 7	Lewis and Clark	20
Willamette 0	Linfield	19
Willamette 32	Whitman	25
Willamette 7	Pacific	32



Unidentified Jason piles up Chico plunge for no-gain.



Cat ball carrier about to be grounded after substantial gain in Lewis and Clark-W.U. homecoming tilt.

Top back for the Bearcat gridders in the '49 season was speedy Keith Sperry.



Second string All-Conference guard although the Bearcats' smallest man in the line is spirited Charley Nee



Front row, left to right: Jim Noa, Bob Taylor, Robert Warren, Cecil Johnson, Bill Ewaliko, Charles Bowe, Cecil Conner, Art Beddoe, Bob Hall, Albert Minn, Roy Harrington, Charles Nee; second row: Bob White, John Slanchick, Richard Ruff, Joe Bonowitz, Charles Mary, John Markowskie, Charles Patterson, Keith Clabaugh, Keith Sperry, Bill Kukahiko, Albert Blacic, Don Hosford; third row: Paul Jewell, Walter Richartz, Roger Hawley, Leland Hoar, Al Fedje, Burnell Ambrose, John Skimas, Bob DeBord, Norman Lawson, Charles Massey, trainer Les Sparks; back row: end coach Ambrose D'Eagle, backfield coach John Lewis, frosh coaches Douglas Olds and Jim Johnson, coach C. R. Stackhouse, manager Jack McCarty, line coach "Buck" Smith, and assistant trainer Lyle King.

Varsity Football Team

Winning three and dropping six, the Bearcats had their worst season in years, placing fifth in Northwest Conference play. Hitting their peak early in the season when they drubbed Central Washington 23-0, the Cats went from there to one win and four losses before rising up to drop Whitman in the finale of '49. Losing Captain Howie Lorenz by a pre-season injury was undoubtedly one of the toughest breaks the Jasons had all season. The returning footballers, like Stackhouse, are looking forward to the '50 season.



Coach John Lewis, who masterminded the Bearcats to the Northwest Conference championship

Basketball

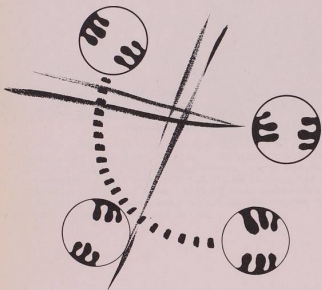
Willamette's "Beardless Bearcats" came to the fore in the Northwest Conference when they won 12, lost but 3, and went to the finals of the NAIB District 2 play-offs this year. With the roster jammed with sophomores, the Cats repeated on the title they tied for last year.



Captain and all-conference guard is this stocky fireball, LOU SCRIVENS, a Sophomore this year



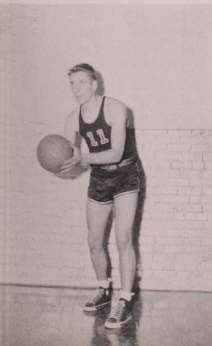
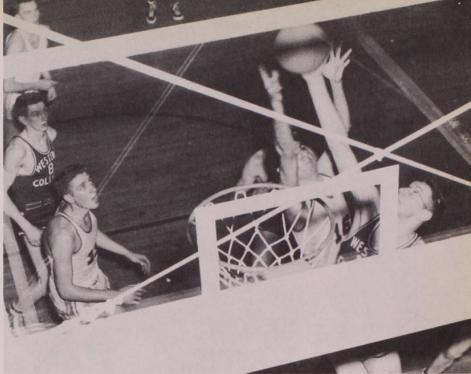
High-scoring TED LODER goes camera shy, but cans two points



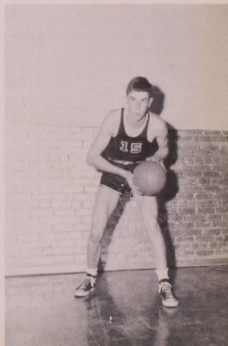
Center CHUCK ROBINSON comes down after hooking one in from the key. AL FEDJE looks on. The 'Cats won.



Big **CHUCK ROBINSON** goes high to block this shot in the Western Washington game



Left: All-conference forward is Sophomore **TED LODER**



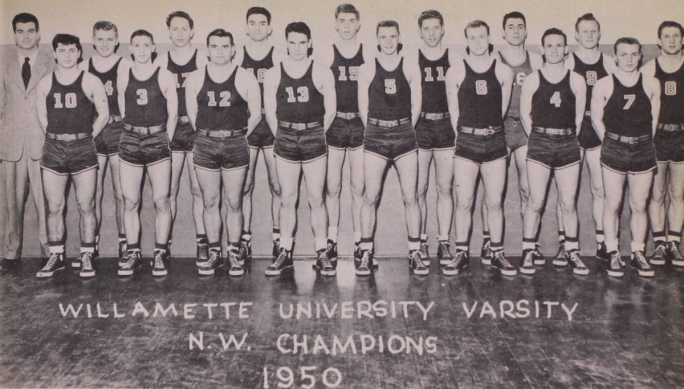
Right: All-conference center **DOUG LOGUE**, who is a Soph this year



DICK BROUWER got this shot over an OCE man for two points and an aid to victory in the ball game

How They Shot

	FGA	FG	PCT.	FTA	FT	PCT.	PF	TP	AVE.
Loder, f	420	134	.319	179	105	.587	87	373	13.8
Logue, f-c	242	109	.451	110	63	.573	82	281	10.4
Brouwer, f	255	94	.369	105	62	.590	72	240	9.2
Scrivens, g	247	76	.308	57	43	.755	58	195	7.2
Robinson, c	196	68	.347	79	55	.696	72	191	7.1
Bellinger, g	178	63	.354	85	58	.683	60	184	6.8
Nordhill, g	67	21	.314	18	11	.611	23	53	2.2
Fedje, c	43	14	.326	18	12	.667	10	40	2.2
Evans, g	41	14	.342	15	9	.600	21	37	2.5
Montag, f	23	8	.348	16	10	.625	17	26	1.0
Bryant, g	23	5	.217	22	9	.409	14	19	1.0
Matile, f	19	6	.316	13	7	.539	16	19	0.9
Osuna, g	11	1	.091	11	8	.727	12	10	0.5
Girod, g	6	2	.333	7	4	.572	4	8	0.8
Ambrose, f	2	0	.000	0	0	.000	0	0	0.0
Nice, c	7	0	.000	2	0	.000	3	0	0.0
Totals	1778	615	.346	737	451	.611	552	1681	62.3



Left to right: Coach Lewis, LOU SCRIVENS, DAN MONTAG, CLIFF GIROD, DEAN NICE, PETE BRYANT, CHUCK ROBINSON, GEORGE MATILE, DOUG LOGUE, CLAUDE NORDHILL, TED LODER, HUGH BELLINGER, BURNELL AMBROSE, RAY OSUNA, AL FEDJE, JACK EVANS and DICK BROUWER

For the Titlists, Bouquets

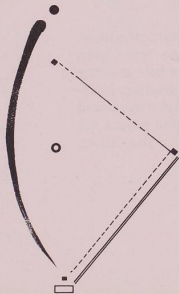
This young bunch of Bearcats was not only one of the finest clubs in Willamette basketball fortunes, the team looks to bigger and better things ahead with the whole starting line-up due to return for two more years of playing. Missing, of course, will be carrot-thatched Al Fedje who showed up great in the final weeks, but Lewis will still have a hot crew of prospects back for another season. To the titlists, bouquets, another conference title awaits.



Coach John Lewis directs batting practice, tells the players how to hit, molds a winning team

Baseball

W.U.'s fighting Bearcats battled for top conference honors in the '50 season, staying just one game off the pace in early season play. The 'Cats boasted one win over Oregon State, dropped two heart-breakers to Oregon.



ROY HARRINGTON and DEKE WALKER, Jason catchers, held down the backstop spot for Lewis, guided the pitching staff





LEFTY NORDHILL fired his high hard one into his waiting enemy, made him out number two on a pop fly



GEORGE MATILE takes the peg from **DAVE PERLMAN** in order to complete the needed double play

Six of ten Bearcat chuckers line up, show form and determination



CHUCK BOWE, watching the pitch go by outside, decides to wait until a better one comes along



Bearcat fielders, sluggers and chuckers, left to right, first row: GORDY LENZ, CLIFF GIROD, MIKE GLENN, JOHN SKIMAS, DAVE PERLMAN, RAY POINTER, FRANK GATCHELL and ROY HARRINGTON. Second row: GEORGE MATILE, DICK BROUWER, LOU SCRIVENS, CLAUDE NORDHILL, JOHN MARKOSKIE, CHUCK BOWE, DEKE WALKER, Coach Lewis. Third row: IRV ROTH, LARRY STOCKS, BOB WHITE and BURT LUND

Bearcats Look to Green Years

The Bearcats will look to even better things in the future, much as in basketball, with sophomores dominating the play. The front line, with Lou Scrivens on the mound, is composed of six sophomores, one frosh, two seniors. Next season forecasters like the Bearcats for Conference Crown.



IRV ROTH, run-batter-in leader, takes his cut in batting practice

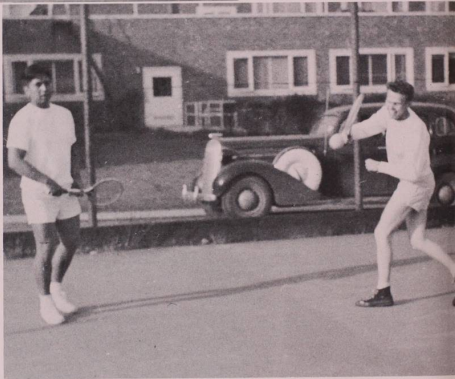
Tennis

Although losing outside conference play to superior Oregon and the Oregon Staters, the Cats broke even in league play with three wins, three defeats.

Left: First row, left to right, are EARL KILLEFER, PHIL SHAW, RAY McCOY and RAY MYERS. Second row: BUZZ CHAMBERS, AL MILES, COACH SPARKS, CECE CONNERS and DICK UNRUH



Right: CECE CONNERS and RAY McCOY, number two man, combine talents in a fast doubles game



Left: Cece puts his all into a blazing serve to his opponent



Left: Golf Coach JIM JOHNSON
in his first year as fairway mentor

Right: BILL WITTENBERG,
number one man, consistently shot
in low 70's for the 'Cat team



Golf

The '49 Conference Champions added Bill Wittenberg to their '50 roster and set themselves for the conference tourney. The golfers turned in a fair year.

Left to right, front row: DON BUELL, BILL WITTENBERG, VINCE ALESKA, DON McMASTER; back row: FRANK GROH, ART DOW, BOB PEDERSON, BOB HEARN, JOHN JANETSKI and AL BLACIC



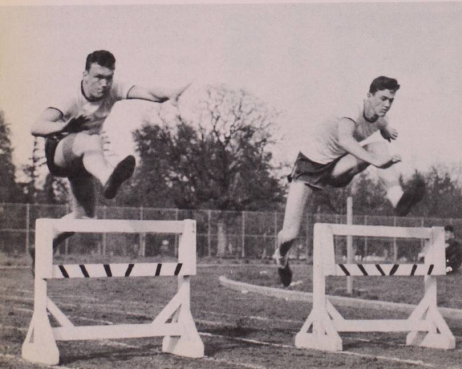
Above: Another first-year man is Chester Stackhouse, one of top track men in the nation

Right: BOB HALL, Willamette's ace javelin thrower, set to hurl one



Track

Under the guidance of a new track coach, sports at Willamette gained acceleration as the new track rounded into shape. The 'Cats won two meets, worked hard to place high in conference.



NORM DVERSDAHL and TED MERTZ take hurdles in rare form



WALLY BOE goes over five and one-half feet in the high jump with comparative ease



GEORGE PORTER, Freshman discus heaver, shows form on this throw

Knelling, left to right: Manager GRAHAM, GALBREATH, COCKING, OLSON, BATES, GORDON, NOA, NELSON.
Standing: Coach Stackhouse, REYNOLDS, MINN, MURDOCK, PREDILETTO, COTTON, COLLIER, BOE, THOMPSON, PORTER, HALL, MERTZ, STAUFFER, FEDJE, MAUDLIN, MILLER, SHANGLE, DVERSDAHL and Manager PAYNE



Bearcat Sprinter VERNE SHANGLE gets off to fast start in practice



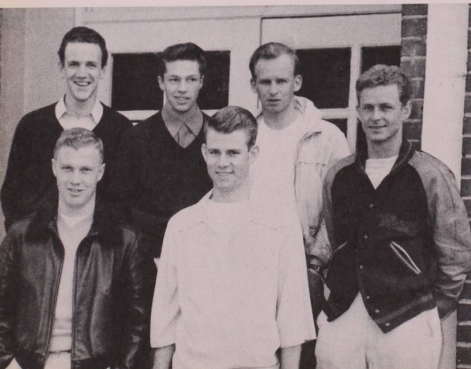


Left: Speedy Beta skier, TOMMY EDWARDS' win led them to mural win

Below: Pictured left to right are the Betas who won intramural ski trophy: DUANNE DENNY, DON CARPENTER, TOMMY EDWARDS, DALE CLEAVER

Skiing

Willamette's skiers took third in this year's conference meet, placing behind Whitman and Lewis and Clark at Government Camp. Lack of support handicapped Al Miles in lining up meets.



Bearcat skiers at left, front row: BOB ODLE, COLE STEVENS and AL MILES. Second row: DON CARPENTER, DAVE ANDERSON, TOM EDWARDS

'Cat Coaches

Chester Stackhouse



Head Coach Chester R. Stackhouse is new to the Willamette campus this year and has done admirably well as a first-year man, innovating a new system in football, bringing out the best in Willamette's track men as well as its new track field and personally recruiting future Willamette athletes. "Stack," as he has been dubbed, comes to this campus from Lincoln University in Pennsylvania where he won national acclaim through the "Athletic Journal."

John Lewis

This is basketball and baseball coach John Lewis' third year at Willamette. In that time he has guided his charges to two straight wins in Northwest Conference basketball championships, as well as putting baseball back on a pre-war standard recruiting prep baseballers from all over the state. Lewis came to Willamette from Grant High School in Portland, and in the Lewis manner, he there too, turned out winning teams.



Les Sparks

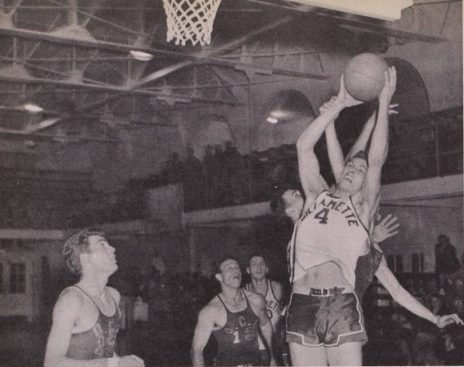


Left-handed Les Sparks is completing his twenty-sixth year as Willamette tennis coach, being here longer than all the rest of the coaches combined. He is Director of the Physical Education department and is in charge of all intramurals on the campus except bowling. Les graduated from Willamette 'way back when and studied for his master's at Stanford, as well as doing work in three other schools.

James Johnson

Another first-year man is Jim "Chub" Johnson who graduated from Willamette only last year after a stellar two years with the Bearcats as a basketball player and a golfer, after transferring from Clark Junior College in 1947. Jim is Freshman basketball coach and golf coach, and has turned out several individual stars in each sport. Jim is married, as are all the other coaches, and hopes to make his present coaching job at Willamette a stepping stone to future success.

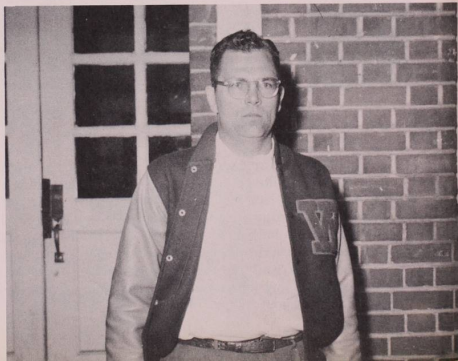




Frosh DICK RUFF takes rebound in OCE struggle

Frosh Basketball

The Freshmen basketballers, although losing over half of their games, showed promise of developing into future first-stringers for John Lewis' varsity.



JIM JOHNSON handed down basketball know-how to eager Freshmen

Kneeling are TOM ACHESON, DUANE DENNY. Standing, left to right: NEIL MOODHE, CHUCK HARRIS and JOHN AMBLER



Frosh Tennis

The freshman tennis men are working hard this year so that they might fill positions left vacant by graduating seniors. Among the more promising prospects is Tom Acheson, a red-thatched racketeer, whose game is swiftly smoothing into shape. Frosh had mediocre season.



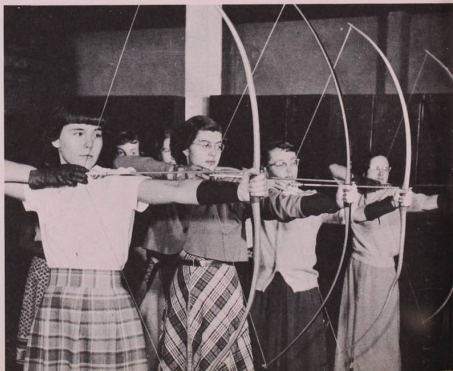
Number one man, TOM ACHESON, throws one up for his blistering serve



Left: Miss Gale Currey, director of Willamette's well-rounded women's sports program

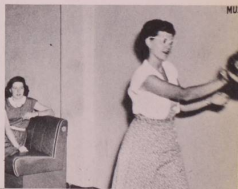
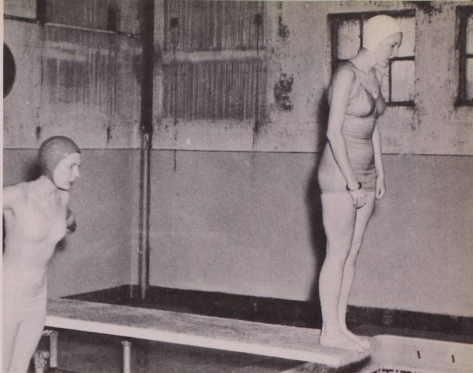
Women's Sports

The women at Willamette truly keep in fine trim under the school's athletic plan. Their activities include such sports as archery, bowling, badminton, softball, tennis, volleyball and swimming.

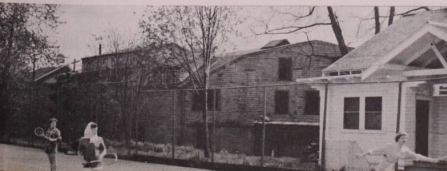


Willamette's girl Robin Hoods captured second place in the national archery contest with SHIRLEY ALLEN leading the way

Right: SUE MYERS prepares for the big splash in the Y.M.C.A. pool



PAT PARSONS leads with her left for the Delta Gamma bowling team



NANCY MARKS reaches but misses her try at a drive from the far court



Les Sparks, intramural sports director, shown in his element putting up mural posters

Intramural Sports

This year's intramural program has seen the most varied sports set-up in recent years. Touchball, basketball, track, volleyball, softball and bowling remained and badminton and tennis were added to the selection. Betas, Phi Deltas and Sigs ranked high in mural play.



Chief aide to Sparks is FRANK REYNOLDS, who runs things when Sparks is with his tennis club



Left: Sigma Chi intramural track champs. Second from right, NORM DVERSDAHL, who scored 25½ points

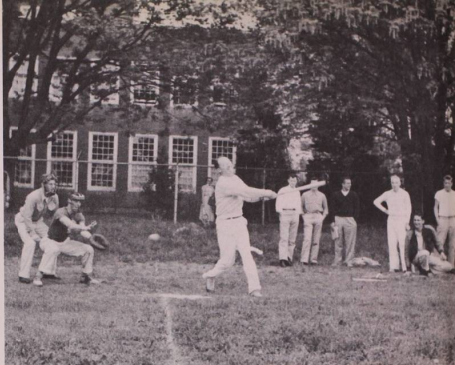
Right: Phi Delt's score on Baxter in touchball tussle



Left: DAVE CARD, who is on first half champion Phi Delt team, rolls his ten-pin ball

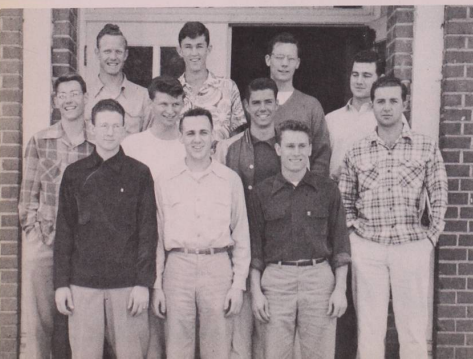


Right: Fenix cuts, misses and groans for his faculty team



Betas Win Touchball, Volleyball

The Betas ran away with touchball and volleyball championships for a lead in intramural picture. The Phi Deltos took basketball, the Sigs track.



Left to right are the Betas who took mural touchball. First row: PAUL JEWELL, RALPH BOLLIGER, DICK ENDSLEY. Second row: NORTY YOUNGLOVE, RUSS DAY, BUZZ CHAMBERS, ELIOTT MOTCHENBACHER. Third row: AL FEDJE, TED MERTZ, PHIL HAMMOND and WES BOLLIGER

Left to right, the volleyball champions, Beta Theta Pi: TED MERTZ, AL FEDJE, DICK ENDSLEY, BILL EWALIKO (who lends moral support), RUSS DAY and NORTY YOUNGLOVE



Basketball champs are these Phi Delt; kneeling left to right are: LARRY STOCKS, RON COFFEY, ROG ADAMS, MIKE GLENN. Standing, BILL BISSELL, MARK COTTON, DON BENSON, DON PHILLIPS, PAUL NIESWANDER



G. HERBERT SMITH
President

Willamette University successfully passed the test of its 107th year under the guidance of Dr. G. Herbert Smith. In his eighth year as President of the university, he was undaunted by the obstacles offered by the year 1949-50, and the success of his program is a tribute to an able leader and a progressive educator.

DR. RAYMOND A. WITHEY, JR.
Dean of Students



DR. DANIEL H. SCHULZE
ASWU General Manager



ROBERT W. FENIX
Business Manager



REGINA EWALT
Dean of Women

HAROLD B. JORY
Registrar



CHARLES A. PAETH, JR.
Director of Admissions



DR. RALPH E. PURVINE
University Physician

HENRIETTA ALTHOFF
University Nurse

M. L. COHN
Chief Accountant

TRAVIS CROSS
Director of Information



LORENA N. JACK
Residence Hall Director



DR. MORTON E. PECK
Herbarium Curator



MELVIN H. GEIST
Dean of College of Music

Music School

The College of Music is an institutional member of the National Association of Schools in Music and has among its enrollment students from all parts of the country who come for expert training. It serves as a basis for many school activities such as the A Cappella Choir and Glee and produces teachers who are in great demand throughout Oregon.





RALPH DOBBS
Associate Professor of Piano



BENNET LUDDEN
Assistant Professor of Piano and
Theory



HELEN MACHIRRON
Instructor in Piano and Theory

Piano

Many opportunities for valuable training and experience are offered by the department of Piano, under the direction of Ralph Dobbs. Student recitals have proven to be a source of widespread interest to all. Professor Dobbs is assisted by Miss MacHirron and Mr. Ludden.



Music senior scholar:
BETTY KUHLMAN

ELWOOD BALL
Acting Assistant Professor of Music

CLORINDA TOPPING
Instructor in Voice

JEAN FARQUARSON
Instructor in Music



Music

Many practice hours are spent in Waller Hall chapel by organ majors who are instructed by Elwood T. Ball. Music students training for public school teaching receive their general instruction from Miss Farquarson and Mrs. Topping who also teaches voice and directs the Girls' Chorus.



Music senior scholars:
BOB O'NEILL and
DORIS WALSER



MAURICE W. BRENNAN
Assistant Professor



WILLIS C. GATES
Associate Professor

Instrumental

Students in the Instrumental department of the School of Music are instructed by Mr. Brennan and Mr. Ball. The university band, directed by Mr. Brennan, provides lively entertainment at sports events, while accompaniment for May Weekend and the Messiah is supplied by the orchestra.



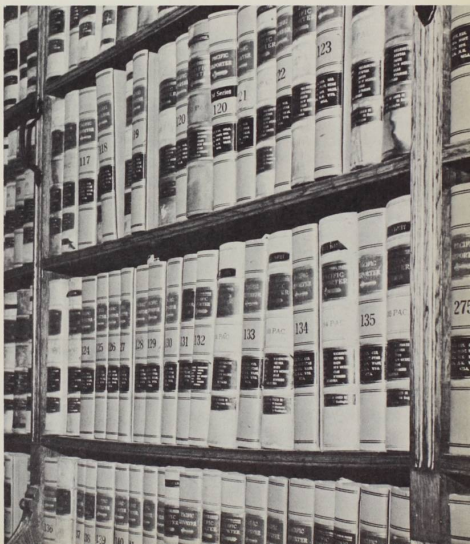
Band senior scholar:
WALTER BUEHNING



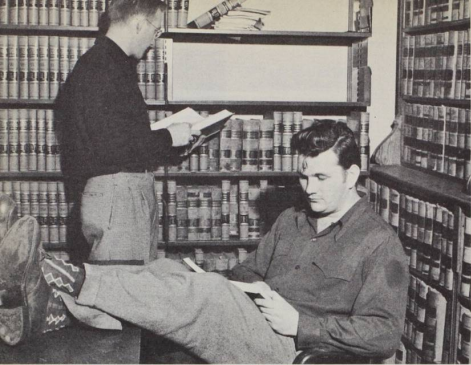
SEWARD P. REESE
Dean of College of Law

Law School

Willamette University's College of Law is one of the oldest Colleges of Law on the Pacific Coast, and over this long period of years it has acquired a reputation of high caliber among the legal profession. Established in 1883, it has been associated with Willamette University since its inception.



Students delving into the stores of legal knowledge available to more easily confuse them



Law School: Retreat of the Studious

The College of Law has long been recognized as the home of a select few; only those capable of presenting a g.p.a. above the average, and possessing a studious mind are allowed to enter its portals. Maintaining the "C" average required for continuance of one's law studies is a test of the sturdiest of mind and body.



ROY M. LOCKENOUR
Professor



Left:
WILLIAM WINSLOW
Law Librarian

Left below:
RAY L. SMITH
Special Lecturer

EDWIN W. BUTLER
Assistant Professor

JOHN C. PAULUS
Assistant Professor

CHARLES A. JENS
Assistant Professor

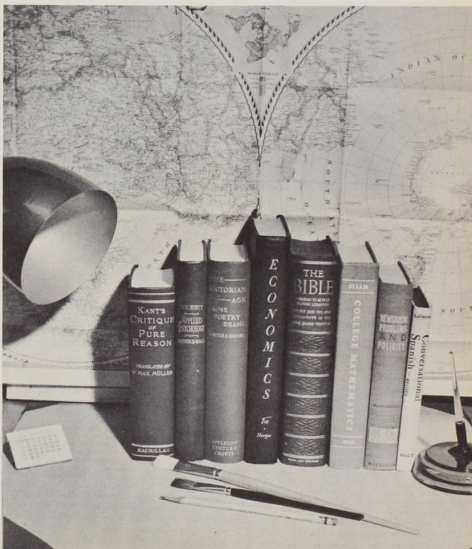




DR. ROBERT D. GREGG
Dean of Liberal Arts College

Liberal Arts

The College of Liberal Arts offers to the student an introduction of cultural backgrounds and phases of expression which in turn offer the student a rich field for investigation of his civilization and culture. Through such studying the student may attain insight into the finer qualities of living and be aided in developing a well-balanced personality.





Senior scholars in Business Ad.:
REX EDMONDSON,
MARJORIE QUAMME
Senior scholars in Economics:
MAXINE MUCKLE, ED CAIRO

Below:
ROBERT M. HALEY
Head of Economics Department

JAMES I. ELLIOTT
Assistant Professor

Economics—Business Administration

Students studying for a future in the business world find information consisting of a background study for understanding current economic problems, the operation of our economic systems, and training for a job, vitally important to their success upon graduating from college.





HENRY COOPER and
WALLY SOUTHARD
Senior scholars of
French and German

Below:
DR. GEORGE D. HOCKING
Head of Language Department



MARION MORANGE
Associate Professor, French

Languages

Language courses are so designed that a student gains knowledge of foreign customs, historical information and the ability to speak and write a language of other people. The foreign language has a vital position in the world today and will aid the student in developing culture and broadening his outlook.

PAUL B. BEAL
Associate Professor Romance
Languages, Spanish

MARGUERITE E. BERG
Instructor, Spanish

DR. DANIEL H. SCHULZE
Professor, German

OLIVE M. DAHL
Associate Professor, German



Education senior scholars:
SHIRLEY ALLEN and
LAWRENCE REHFELD

Below:
DR. GEORGE B. MARTIN
Head of Education Department

KENNETH V. LOTTICK
Associate Professor



Education

With teachers still being in great demand, students are finding that a future in education will be an opportunity for success. Willamette offers courses and practice essential to a future teacher's training.

Senior scholars: GERI BOWLES,
LLOYD HANSON and
BOB SCOTT

Below:
DR. HELEN PEARCE
Head of English Department

DR. EGBERT S. OLIVER
Professor



English

The varied phases of English through its main periods are treated here in an attempt to allow students to acquire sufficient knowledge of its development and gain the ability to understand it.

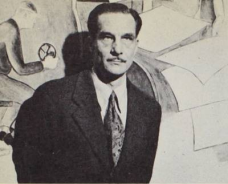
LAURA DUNN
Instructor

THOMAS GILLIES
Instructor

HENRY KOHLER
Professor

MRS. MARGARET RINGNALDA
Instructor





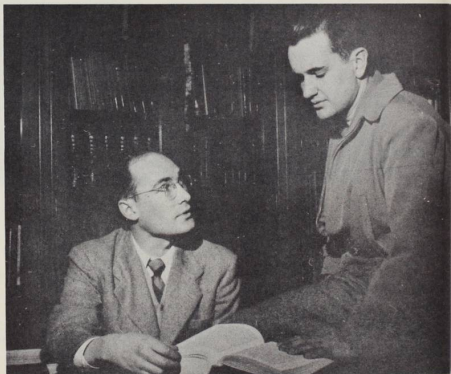
MURCO RINGNALDA
Head of Department

Journalism

Here the student is afforded with an introduction to journalistic principles and practice and an opportunity to put his knowledge to use on such publications as the Collegian, Wallulah, Fusser's Guide, Student Hand Book, and the campus Humor Magazine.

Sociology

Students of sociology are finding its principles and concepts applicable and fundamental to the technological, political, religious and social aspects of our modern age and culture.



Senior scholars in sociology:
JOHN CHRISTENSEN and
SCOTTY WASHBURN

JOHN RADEMAKER
Head of Department



ALFRED SHEETS
Assistant Professor

Political Science

Here students receive an opportunity to be well-versed on current affairs of countries the world over as well as our own and it gives them an assurance and preview of their future position in the political world.

Senior scholars:
RUSS TRIPP and
RUSS GOCHNOUR

Below, l. to r.:
ROBERT GATKE
Head of Department

MARK HATFIELD
Instructor

FREEMAN HOLMER
Assistant Professor



Senior scholars in Biology-Botany:
JOE BRAZIE, JOSEPHINE and
LYLE HAMILTON

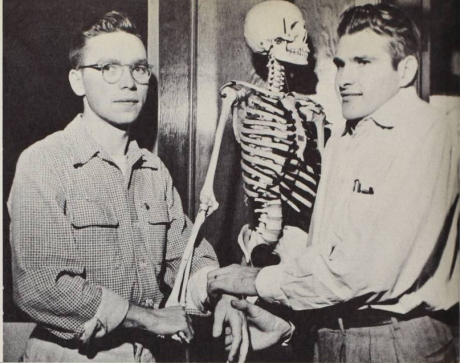
MARTHA SPRINGER
Head of Department



CAROLYN SAXTON
Instructor

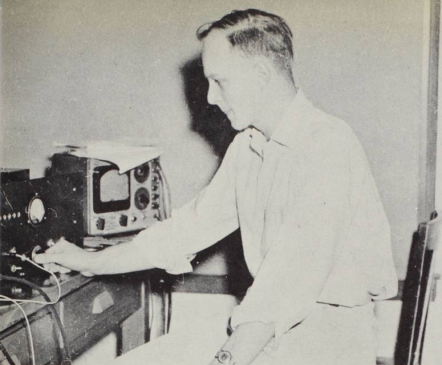


HOWARD HINDE
Instructor



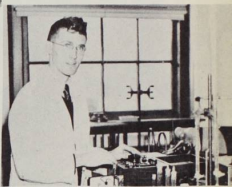
Biology—Botany

A study of the development of plants, animals and human beings is treated here with emphasis on their biological characteristics. Biology assumes a vital role in training for future medical personnel as well as a general study for majors in other fields.



ROBERT BENNETT
Senior scholar in Physics

CHARLES NICHOL
Associate Professor



Physics

The various courses in physics consist of lectures, laboratory work, and problems and theories regarding the laws of the universe. Physics students are finding even the general courses a considerable aid in the comprehension of the scientific work now being done with atomic energy.

EARL BROWN
Professor

Chemistry

To provide thorough training in the fundamental branches of chemistry to those intending to enter graduate schools of sciences as well as to those who plan to teach or practice chemistry, is the main function here.

FLOYD BIRD
Assistant Professor

ROBERT PURBRICK
Assistant Professor

CHARLES JOHNSON
Professor





Mathematics senior scholar:
AL MILLER

Below:
CHESTER LUTHER
Head of Department

KERMIT CLEMANS
Instructor

RUTH BATES
Asst. engineering drawing

Mathematics

Many students take mathematics as part of a liberal education or to enable them to understand methods of scientific expression and investigation. Emphasis is placed upon clear thinking and logical reasoning plus the ability to apply its principles.



Geology

Geology is the study of the earth's features which contributes to an understanding of the problems of modern life. It furnishes a well-rounded education with knowledge that is transferable to other science departments.



HERMAN CLARK
Head of Department





Senior scholar in Art is
DALE CLEAVER

Below:
CARL HALL
Artist in Residence

CAMERON PAULIN
Professor

Art

This department attempts to stimulate a broader and more discriminating judgment of classical and modern art, to further the student's appreciation of its form and to allow creative tendencies to be expressed.





LOIS LATIMER
Head of Department

Home Economics

Students in the field of home economics are provided with helpful training for homemaking with emphasis on its problems and their solutions and the part it plays in the adjustment and successfulness of the individual's future.



DORIS KIMBLE senior scholar
in Home Economics



ARNE JENSEN
Visiting Professor



CHARLES DERTHICK
Professor



REGINA EWALT
Associate Professor

Psychology

In accordance with the increasing medical interest shown by the country, Willamette students are also finding the study of the various fields of psychology, its applications and methods, an asset and firm foundation for any field of work.



ARLENE BENNET and
LaFYRNE SHOWACY
Psychology senior scholars



IVAN LOVELL
Head of Department

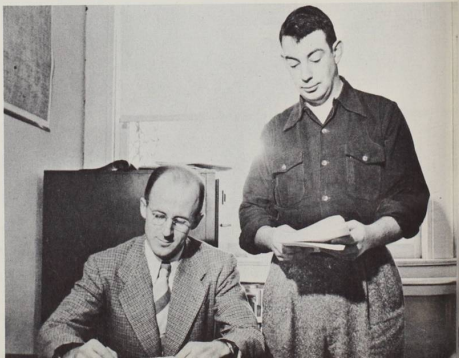


CHESTER KAISER
Assistant Professor



History

Man has learned through experience that we, as individuals as well as a nation, can benefit by gaining an adequate understanding of the present through a study of knowledge obtained from the past. This is what we know as history and unconsciously apply its principles to our everyday lives.



**BOB HOWELL and
THOMAS WANN**
Senior scholars in history

NORMAN HUFFMAN
Head of Department



EDWARD KOLLMAN
Head of Department



Philosophy

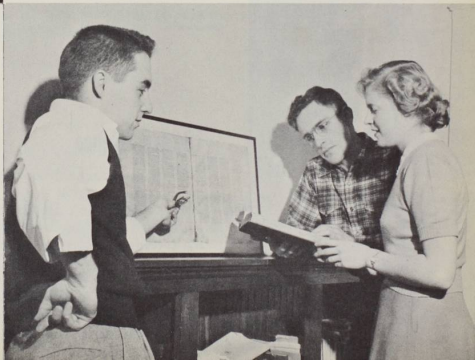
Since the beginning of time, great thinkers have been puzzled over why man and the universe are the way they are. Courses in philosophy acquaint the student with philosophical theories of the past to help him decide on theories concerning the present and future.



RAYMOND A. WITHEY, Jr.
Assistant Professor

Religion

Religion is one of the most fundamental bases of people all over the world. Studying courses in this allows a student to become familiar with the various religious doctrines upheld apart from Christianity and its beliefs.



Senior scholars: **BUD HOLMES**
and **DORIS GRAGG**, religion, and
ART DOW, philosophy



Drama and speech senior scholars:
RAY LOTER and
BETTY FERGUSON

DR. JAMES KIRKWOOD
Head of Department



Speech and Drama

Under the direction of a newcomer, Ruane Hill, and the coaching of James Kirkwood, the speech and drama department launched itself upon a successful year with entertaining play productions and debating.



THOMAS GILLIES
Librarian

RUANE HILL
Instructor, speech and drama



RICHARD WILLIAMS
Assistant Librarian

Library Science

A study in library science acquaints the student with the use of the cataloging system and reference books. They also take charge of the desk which includes the checking out of books, putting certain books in reserve and returning them to their proper section.



FABIAN NELSON and
FERN INGRAM
Senior scholars in Athletics

LESTLE SPARKS
Professor, Director P.E. for men

Athletics

With a purpose to promote general health, good sportsmanship, and ability to participate in athletic games with a healthy competitive spirit, physical education plays a vital role in the life of every student.



GALE CURREY
Associate Professor P.E. for women

LUCILLE HUMPHRIES
Instructor P.E. for women

JOHN LEWIS
Instructor

CHESTER STACKHOUSE
Director Athletics





Class officers: DICK HARTLEY, rep; MARGARET AUSTIN, treas; CECE JOHNSON, vice-pres; RUTH JAMES, sec'y; HOWARD LORENZ, sgt-at-arms



First semester president, BOB McMULLEN stops in at bookstore

First Semester

The last year of their college career saw the class of '50 busily engaged in campus activities. The class members, however, found time to present their Christmas party which will be well-remembered.

ED CAIRO, second semester prexy, led the class through the busiest part of the year



Second Semester

Second semester found the Seniors swamped with studying for orals and comps and preparing for graduation events. Memories of their last "get-together," which was a beach trip, will be cherished by all of them.

Officers: MARGARET ATWOOD, sec'y; WILL HILGERT, sgt-at-arms; ROBERTA BATEY, treas; and GORDON PRATT, vice-pres.





ACKER, ARNOLD, Newberg, Oregon. Beta Theta Pi, Annual Editor; Senior Class Glee Committee '49.

ADAMS, ROGER, San Francisco, California. Business Administration and Economics; Phi Delta Theta; Blue Key; Junior Class President; ASWU First Vice President.

ALLEN, GLENNIS, Salem, Oregon. Theory and Voice; Alpha Lambda Delta; Mu Phi Epsilon; Vice President '49, '50; Theory Senior Scholar '48, '49; A Cappella Choir; Senior Girls' Trio; Varsity Varieties.

ALLEN, SHIRLEY, Cottage Grove, Oregon. Mathematics; Wesley Fellowship; Deputation Chairman; WAA; Future Teachers of Oregon, Treasurer; Laumann Hall Treasurer, First Vice President, President; Women's Archery Team '47, '48, '49, '50.

ASHFORD, GRACE, Salem, Oregon. Music.

ATWOOD, MARGARET, Corvallis, Oregon. Psychology; Delta Gamma, Corresponding Secretary, Chapter Treasurer; Psi Chi; Fusser's Guide Editor.

AUSTIN, MARGARET, Coos Bay, Oregon. Psychology; Alpha Chi Omega, Work Manager, House Manager, Publicity Chairman, Lyre Editor, Recording Secretary; YWCA; Psychological Association, Secretary; Senior Class Treasurer.

BAKER, DONALD, Salem, Oregon. Business Administration.

BARBER, JEAN CARRICO, Phoenix, Arizona. Sociology; Delta Gamma.

BARCKLEY, DONALD E., Salem, Oregon. Business Administration; Sigma Alpha Epsilon, Correspondent; Sophomore Class Sergeant-at-Arms; Intramural Bowling Manager.

BARCKLEY, NANCY WHITMORE, Salem, Oregon. Sociology; Delta Gamma, Recording Secretary, Work Manager, Rush Chairman; YWCA, Membership Chairman, Y-Teen Advisor; Pep Cats; Fusser's Guide Staff.

BARHAM, LAWRENCE W., Salem, Oregon. History.

BARNHART, DEAN G., Independence, Oregon. Education.

BARNSTABLE, COWELL H., Klamath Falls, Oregon. Sociology.

BATEY, ROBERTA, Elk Grove, California. Sociology; Alpha Chi Omega; Beta Alpha Gamma, Vice President; Sophomore Class Secretary; YWCA; Westminster; Panhellenic President.

BENNETT, ARLENE ZASTERA, Bend, Oregon. Psychology; Psychological Association; YWCA; International Relations Club; Wesley Fellowship, Secretary, Program Chairman, Assistant Recreation Chairman; AAUW Fellowship Scholarship and Willamette University Honorary Scholarship '47; Willamette University Continuing Honor '48; National Methodist Scholarship, The Simon's Psychological Prize '50; Psychology Senior Scholar.

BENNETT, ROBERT BOWEN, Salem, Oregon. Physics-Mathematics; Beta Theta Pi; YMCA; Wesley Fellowship; Physics Senior Scholar.

BERGSTROM, MAX W., Salem, Oregon. Sociology; Independents, Vice President '47; Men of Baxter '48, '49.

BLASIC, ALBERT, Redondo Beach, California. Business Administration; Letterman's Club; Varsity Football; Football Letter; Rube Basketball.

BODIE, JAMES, Clinton, South Carolina. Law; President of Student Body of College of Law '49, '50; Phi Delta Phi.

BOLLIGER, WESLEY, Portland, Oregon. Sociology.

BONESTEELE, WALLACE H., JR., Salem, Oregon. Business Administration.

BOWLES, GERALDINE SHIRLEY, Portland, Oregon. Journalism-Social Science; Phi Beta Phi; Alpha Lambda Delta; Beta Alpha Gamma; Cap and Gown, Young Republicans, State Executive Board; English Senior Scholar; Willamette University Honor Scholarship; Wallulah Editor, Advertising Manager; Editor of "Willamette Alumnus"; Publications Board; Collierian Staff; Social Activities Board; Campus Correspondent for Capital Journal.

BRAZIE, JOSEPH, Salem, Oregon. Biology; Beta Theta Pi; Choir.

BREAKEY, DONALD RAY, Salem, Oregon. Biology; Beta Theta Pi, Pledge Trainer; Mu Epsilon Delta, Program Chairman.

BROEDER, DALE, Portland, Oregon. Economics.

BROWN, JOHN T., Salem, Oregon. English literature.

BRYANT, PETER L., Astoria, Oregon. Physical Education; Sigma Alpha Epsilon; Letterman's Club; Basketball.

BUEHNING, WALTER, Gering, Nebraska. Public School-Instrumental Music; Band; Orchestra, Choir, Intramural Basketball; Joseph Holman Scholarship; Theodore Presser Foundation Scholarship.

BUSSELLE, CARL T., Salem, Oregon. Art; Sigma Chi.

CAIRO, EDWARD, Portland, Oregon. Economics, Senior Scholar; Wallulah Certificate of Award.

CARLSON, WILLIAM, Salem, Oregon. Law; Beta Theta Pi; Phi Delta Phi, Clerk.

CHRISTENSEN, JOHN N., Salem, Oregon. Sociology, Senior Scholar; Blue Key, Secretary; Independents, Vice President, President; Philosophy Club, President, Finance Manager; Chairman of Education Activities Committee; Chairman of Campus Chest.

CHURCHILL, THOMAS W., Stockton, California. Law, Delta Theta Phi, Dean '49, '50; Board of Editors of Willamette Series of Legal Handbooks '49, '50, Business Manager '49.

CLEAVER, DALE G., Salem, Oregon. Art; Beta Theta Pi; Phi Eta Sigma, Charter President; Blue Key; YMCA, Secretary; Wesley Fellowship, Publications Chairman, Publicity Chairman, President; SKI Club; National Methodist Scholarship; McCulloch Scholarship; Willamette Honor Scholarship.

CLINE, GORDON, Burlingame, California. Chemistry.

COGSWELL, WILLIAM, Salem, Oregon.

COLE, NORMA LEE FAABORG, Honolulu, Hawaii. Business Administration.

COLE, PAUL B., Eugene, Oregon. Business Administration.

COOK, FARRELLE E., Bremerton, Washington. Law.

COOK, MARILYN, Tigard, Oregon.

COOPER, HENRY F., Salem, Oregon. French, Senior Scholar; Catholic Club.





COOPER, THOMAS H., Salem, Oregon. Biology; Phi Eta Sigma; Catholic Club, President.
 CHOPENHAVER, JOHN M., Salem, Oregon. Law.
 CROGHAN, WILLIAM, Salem, Oregon. Law; Phi Delta Phi; Law School Student Body Representative.

CURRAN, THELMA, Newark, New Jersey. Music Theory; Mu Phi Epsilon.

DOW, ARTHUR, Salem, Oregon. Philosophy, Senior Scholar; Philosophy Club, Vice President '49, President '50; Golf, Letters '47, '48, '49, '50.

DUNN, HARVEY E., Salem, Oregon. History and Education.

EASTRIDGE, DONALD, Salem, Oregon. Physics.
 EDMONSON, REX, Salem, Oregon. Business Administration; Sigma Alpha Epsilon; Sophomore Class Vice President; Freshman Glee Committee.

EDWARDS, THOMAS L., Albany, Oregon. Art; Beta Theta Pi; Ski Club, Ski Master '47, '49; Willamette Ski Team '48, '49, '50.

ESTEP, MERLIN, Salem, Oregon. Law.
 FAMINOW, STEVE S., Lundbreck, Alberta, Canada. Biology; Phi Delta Theta; Sigma Alpha Chi; Mu Epsilon Delta; YMCA; International Relations Club; Collins Scholarship.

FATLAND, ROBERT B., Condon, Oregon. Sociology.

FEDJE, ALFRED, Salem, Oregon. Physical Education; Beta Theta Pi; Freshman Class President, Representative; Basketball; Football.
 FERGUSON, BETTY, Richland, Washington. Speech and Psychology; Speech Senior Scholar; Alpha Chi Omega, Corresponding Secretary, President; Cap and Gown, Secretary; Beta Alpha Gamma; Tau Kappa Alpha, Secretary; Pepcats; Forensics; Freshman Class Treasurer; Sophomore Class Secretary.

FERRELL, GORDON, Longview, Washington. Business Administration. President Inter-fraternity Council, fall 1949.

FISHER, MARGARET, Forest Grove, Oregon. Art; A Cappella Choir; Canterbury Club, Treasurer; Lausanne Hall Treasurer '48, '49.
 GOCHNOUR, RUSSELL, Johnstown, Pennsylvania. Political Science, Senior Scholar; International Relations Club, President; UNESCO; Philosophy Club; Phi Eta Sigma; Bridge Tournament '50.
 GOTTFRIED, EDWARD G., Salem, Oregon. History.

GRAGG, DORIS, Monroe, Oregon. Religion, Senior Scholar; Alpha Lambda Delta, Senior Advisor; Beta Alpha Gamma, Secretary, Treasurer; Cap and Gown, President; YWCA, Secretary; Wesley Fellowship, Deputation Chairman, Recreation Chairman; Bishop House President; Fredrickson Hall Vice President; May Weekend Committee; Collins Scholarship.

GRIMM, GERALD E., Portland, Oregon.
 GUNNAR, PETER M., Salem, Oregon. Law; Beta Theta Pi, Magister, National Code Revision Committee; Phi Delta Phi.

GUSEY, WILLIAM, Portland, Oregon. Biology; Beta Theta Pi.
 GUYTON, SOPHIE ELLIN, Wilsonville, Oregon. History; Wesley Fellowship, World Friendship Chairman '49; IVCF-Noon Prayer Meeting Chairman '47.
 GWINN, ROBERT, Newberg, Oregon. Music; Beta Theta Pi; Band '47; Chair '47, '50; "Roberta" '48; "Our Hearts Were Young and Gay" '49; Messiah Soloist '50.

HADLEY, HOMER, Albany, Oregon. Biology; Alpha Phi Omega, Treasurer, Vice President.
 HAGELSTEIN, RUTH, Klamath Falls, Oregon. Physical Education; WAA, President, Point Secretary, Publicity Manager, Letter, Sweater, Four Stripes; Future Teachers of America.
 HAKANSON, JOHN, Oakland, Oregon. Political Science.

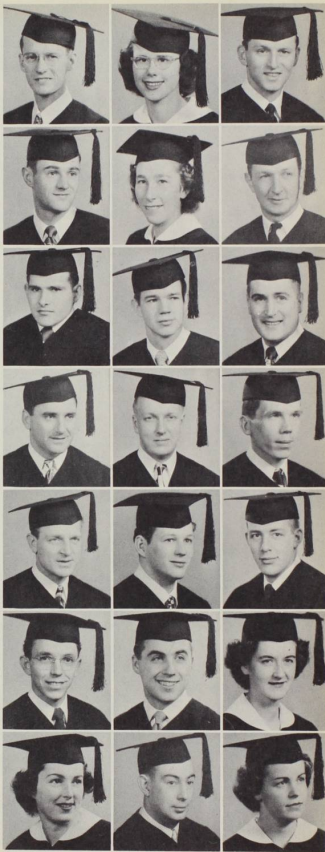
HAMILTON, LYLE HOWARD, Salem, Oregon. Biology. Senior Scholar.
 HANSEN, LLOYD T., Bend, Oregon. English; Theta Alpha Phi, President.
 HARDY, REX, Salem, Oregon. Law; Sigma Chi; Phi Delta Phi, President; Football, two letters; Track, two letters.

HARRINGTON, ROY, Portland, Oregon. Physical Education; Letterman's Club, President; Baseball, three awards; football, three awards; basketball.
 HARTLEY, RICHARD D., Silverton, Oregon. Business Administration; Phi Delta Theta, Rush Chairman; Alpha Phi Omega, Treasurer, Vice President; Inter-Fraternity Council; Student Council; Senior Class Representative '49, '50.
 HEDEEN, PAUL, Tigard, Oregon. Art-Philosophy; International Relations Club.

HEINE, WALTER R., Salem, Oregon. Business Administration.
 HILBERT, WILBUR, Portland, Oregon. Voice-Public School Music; Independents, Choir.
 HOAR, LELAND, Salem, Oregon. Chemistry; Football '48, '49; Letterman's Club.

HOLMAN, FRANK, Portland, Oregon. Violin; Independence; A Cappella Choir; Band; Orchestra; Music School Award for service to music programs for four years.
 HOLMES, KENNETH, Albany, Oregon. Economics; Beta Theta Pi, President, Manager, Treasurer, Recorder; Phi Eta Sigma; Alpha Phi Omega; Judiciary Committee; Inter-Fraternity Council, President; Dormitory Council; Senior Scholar in Religion; National Methodist Scholarship '47.
 HOLMES, LOUISE, Bellingham, Washington. Psychology; Delta Gamma.

HOWARD, PATSY, Burlingame, California. Business Administration and Economics; Alpha Chi Omega, Corresponding Secretary, Social Chairman, First Vice President; ASWU Secretary; Beta Alpha Gamma; Class Secretary '46, '48; Young Republicans Club, Chairman, Secretary-Treasurer.
 HOWELL, ROBERT, Salem, Oregon. History, Senior Scholar.
 INGRAM, FERN, Albany, Oregon. Physical Education, Senior Scholar; Alpha Chi Omega, Treasurer, Second Vice President; Pepcats; WAA, Treasurer, Sports Manager, Secretary; Collegian Circulation Manager; Future Teachers of America.





ISHAM, BERNICE, Salem, Oregon. Public School Music; Alpha Chi Omega, Song Leader; Mu Phi Epsilon, Warden; Theta Alpha Phi, Vice President; A Cappella Choir.
 JAMES, RUTH, Palo Alto, California.
 JANETSKI, JOHN PAUL, San Diego, California. Physical Education.

JOHNSON, CECIL H., West Linn, Oregon. Business Administration; Phi Delta Theta, President; Senior Class Vice President; Letterman's Club; Football '44, '46, '47, '49.
 KESECKER, KEITH, Salem, Oregon. Business Administration.
 KIMBLE, DORIS, Salem, Oregon. Home Economics, Senior Scholar; Alpha Chi Omega, Warden; YWCA; Education Club.

KRAUS, HARRY R., Portland, Oregon. Law.
 KOH, BYUNG CHOLL, Seoul, Korea.
 KUHLMAN, BETTY J., Olympia, Washington. Violin; Mu Phi Epsilon, Secretary, President '49, '50; Alpha Lambda Delta; Chi Omega Cup '48; Chamberlaine-Scholtz Scholarship; Collins Scholarship; Mu Phi Epsilon National Convention Music Delegate, Soloist '48; Salem Community Orchestra, Treasurer; Violin Soloist on A Cappella Choir Trip '49, '50.

KULBEL, GOLDWYN, Beaverton, Oregon. Political Science; International Relations Club, Secretary; Inter Varsity Fellowship, Secretary; Lausanne Hall, Secretary; Drama.
 LAWRENCE, GARALD, St. Helena, Oregon. French; Blue Key, Vice President; Independents, President, Treasurer; Baxter Hall, President; Wesley Fellowship; May Weekend Committee '49; Messiah; Drama.
 LEFILES, BETTYELLA, Crescent City, California. Biology; Independents; Education Club; YWCA.

LENT, BERKELEY, Portland, Oregon. Law; Senior Class President of Law School; Editorial Staff of the Willamette University Series of Legal Handbooks.
 LEONARD, BETTY JEAN, Milwaukee, Oregon. Sociology; Delta Gamma, Secretary; Women's Chorus; YWCA; Peppcats; Messiah; Wesley Fellowship.
 LIEN, AUDREY, A., Salem, Oregon. Business Administration; Chi Omega; YWCA; International Relations Club.

LINDEMOOD, REX, Twin Falls, Idaho. Religion.
 LORENZ, HOWARD, Camas, Washington. Business Administration; Sigma Alpha Epsilon, President; Blue Key; Letterman's Club, President; Sergeant-at-Arms of Senior Class; Rotarian of the Month; Football '47, '48, '49, Football Captain; Tennis '48, '49; Athletic Board; Inter-Fraternity Council, Treasurer.
 LOTER, RAY, Portland, Oregon. Drama, Senior Scholar; Sigma Chi, President; Blue Key; Theta Alpha Phi; Wallulah Ad Manager, Publications Manager; Class Sgt.-at-Arms '47, '50; Senior Class Glee Manager; Lettermen's Club; Football; Track; Campus Chest Director; Asst. Director of "Our Hearts Were Young and Gay"; University Workshop; Director of "Willamette Fireside"; Drama Key award.

MARTINE-LALLY, LUIS A., Portland, Oregon. Law.
 MCCOY, RAY, Salem, Oregon. Chemistry; Sigma Chi, President '48; Blue Key, President '48, '49; Letterman's Club; Junior Class President; Publications Manager '47, '48; Tennis letter '48, '49.
 McMASTER, DON, La Grande, Oregon. Public School Music, Instrumental Supervisor; Band, award; Orchestra; Golf Team; "Varsity Varieties"; Toujours Gate.

McMULLEN, ROBERT ANSLEY, Taft, Oregon. Business Administration; Sigma Alpha Epsilon, President; Senior Class President; Blue Key; Inter-Fraternity Council; International Relations Club, Treasurer; Letterman's Club; Football; May Weekend General Manager '49.
McMULLEN, ALBERT R., Taft, Oregon. Political Science.
MEIER, JOSEPH F., Salem, Oregon. Law.



MIDDLETON, CALVIN, Grants Pass, Oregon. Biology.
MILLER, ALBERT, Hubbard, Oregon. Mathematics, Senior Scholar; Independents, Vice President '48; Phi Eta Sigma; Future Teachers of America; YMCA, Judiciary Committee '48, '49.
MILLER, LOWELL MORRISON JR., Los Altos, California. History; Junior Class Whip Whitman Manager; Junior Class Glee Manager '49; Humor Magazine Staff '49; UNESCO, President '49.



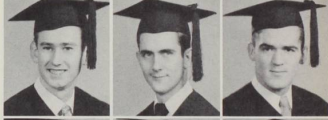
MONTAGUE, ELLEN, Newberg, Oregon. Social Science-Journalism; Delta Gamma; Beta Alpha Gamma, President; Collegian Society Editor '47, '48; Campus Editor '48, '49, Editor '49, '50.
MOORE, GUY, Salem, Oregon. Biology.
MUCKLE, MAXINE, Portland, Oregon. Political Science; Pi Beta Phi, Recording Secretary '47, '48; Rush Chairman '48, '49; Constitutional Revision Committee; Wallulah Staff '48, '49; Economics Senior Scholar.



MUHR, ROBERT L., St. Helens, Oregon. Business Administration; Phi Delta Theta, President, House Manager; Junior Class Vice President; May Weekend Committee; A Cappella Choir.
NAGL, BEATRICE, Aurora, Oregon. Public School Music; Pi Beta Phi, Corresponding Secretary, Recording Secretary; Mu Phi Epsilon, Secretary; Peopata; Future Teachers of America; Junior Class Secretary; Wesley Fellowship; A Cappella Choir; YWCA.
NELSON, FABIAN, Salem, Oregon. Physical Education, Senior Scholar; Sigma Alpha Epsilon; Education Club, President '49, '50; Future Teachers of America; Basketball '47, '48; Intramural Student Supervisor '49, '50.



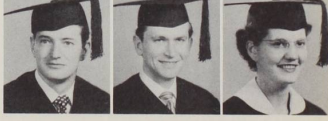
NICHOLS, RONALD, Salem, Oregon. Art; Sigma Chi; Ski Club.
NOONCHESTER, DONALD LEE, Salem, Oregon. Music Theory; Choir; Band; Orchestra; Messiah; Intramural Basketball; Student Recitals.
OLSEN, BARBARA, Medford, Oregon. Biology; WAA, letter, sweater, four stripes.



OLSEN, WILLIAM, Depoe Bay, Oregon. Political Science; Sigma Chi, President, Social Chairman, Grand Chapter Delegate; Wallulah, Darkroom Manager, Advertising Staff; Inter-Fraternity Council, Vice President, Secretary; Young Republicans Club.
OLSEN, RONALD, Burbank, California. Business Administration.
O'NEILL, ROBERT, Buroda, Washington. Music Theory; Sigma Chi; Sigma Alpha Chi; Business Manager of Choir and Orchestra; Choir and Band Award.



OSBORN, THOMAS E., Portland, Oregon. Political Science; Sigma Chi, Secretary; Young Republicans Club, President.
PARKE, LYLE L., Salem, Oregon. Psychology.
PARSONS, PATRICIA, Baker, Oregon. Art; Delta Gamma, Historian, Activities Chairman, Corresponding Secretary, House Treasurer; Peopata; YWCA; Bowling League Manager.





PATTERSON, CHARLES J., Burlingame, California. Business Administration-Economics; Phi Delta Theta; Blue Key '49, '50; Sigma Alpha Chi '48; Judiciary Committee '47; Van Eschen Scholarship '49, '50; Football '46, '49; All Northwest Conference Center '48; ASWU Member-at-Large '49, '50; Sophomore Class President '47; Freshman Class Vice President '46; Letterman's Club.



PATTERSON, WILLIAM C., Kelso, Washington.

PHILLIPS, JAMES R., SALEM, Oregon. Business Administration; Phi Delta Theta.

PICKELL, RICHARD W., Salem, Oregon. Law.
 PITNER, SAM NELMS, New Albany, Mississippi. Drama; Sigma Chi.
 POLLOCK, POLLY, Portland, Oregon. English; Delta Gamma, Panhellenic Council, Secretary '49, '50; Wesley Fellowship; "Roberta"; Ticket Manager for "Our Hearts Were Young and Gay."



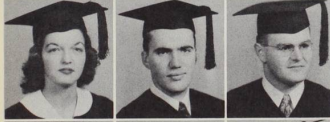
POMEROY, CLEO R., Syracuse, Kansas. Law.
 POSPISIL, LEOPARD, Czechoslovakia. Sociology.
 PRIMBS, EDWARD R., Salem, Oregon. Business Administration.



PRATT, GORDON, Portland, Oregon. Public School Music; Sigma Alpha Epsilon, Social Chairman, Vice President, Scholarship Chairman; Treasurer of A Cappella Choir; Homecoming Committee '49; Choir Certificate for service; Choir Award for Service '47, '48, '49, '50.
 QUAMME, MARJORIE, Salem, Oregon. Business Administration, Senior Scholar; Alpha Lambda Delta; Independents, Secretary; International Relations Club.
 REHFELD, LAWRENCE, Jefferson, Oregon. Education.



REED, EDWARD PARKER, Underwood, Washington. Law; Phi Delta Phi; President of Freshman and Junior Law Classes.
 RINGLE, F. GORDON, Salem, Oregon. Business Administration; Sigma Alpha Epsilon, Recorder.
 RITTENHOUS, EARL J., Salem, Oregon. Business Administration.



ROBERTS, AVIS, Astoria, Oregon. Psychology; Pi Beta Phi, Second Vice President, president; Peapats, President, Advisor; Lausanne Hall Social Chairman; Chairman of Inter-dorm; Psychology Club.
 ROBERTSON, ROBERT O., Albany, Oregon. Business Administration.



ROBISON, GERALD M., Salem, Oregon. Law-Political Science; Sigma Chi; Delta Theta Phi; Senior Class Representative to Student Council.

ROSE, WAYNE, Silverton, Oregon. Political Science, Sigma Chi, Vice President; Sigma Tau; Inter-Fraternity Council '48.
 ROSS, ROY L., Lamont, California. Law; Editor-in-Chief of Willamette Series of Legal Handbooks for '49, '50, Member of Board of Editors '48, '49.
 SCHMIDT, WARREN, Lapwai, Idaho. Business Administration; Alpha Phi Omega, Treasurer.

SEBASTIAN, PATRICIA, Salem, Oregon. Psychology.
 SHANNON, RODGER, Burlingame, California. Chemistry.
 SHELTON, ROY L., Salem, Oregon. Music.



SIMPSON, MARGARET, Salem, Oregon. Art.
 SHOWACY, I. A. FYRNE, Portland, Oregon. Psychology, Senior Scholar; Ray H. Simmons Prize; Chi Omega, President, Vice President; Beta Alpha Gamma; Cap and Gown, Vice President; Handbook Editor; Wallish Key Award.
 SIMMS, BILLY M., Fellows, California. Political Science.



SMITH, PAUL J., Oceanside, California. Physical Education.
 SOLEE, ROBERT E., Salem, Oregon. Chemistry.
 SORENSON, GLEN V., Lyle, Washington. Law.



SOUTHARD, WALLACE D., Villa Grove, Illinois. German, Senior Scholar; Phi Eta Sigma; Collegian Feature Editor '49, Certificates '47-'48, '48-'49.

STEPHENS, COLE PHILLIP, Salem, Oregon. Chemistry; Phi Delta Theta; Ski Club; Swimming; Mu Epsilon Delta, Vice President '49, '50, President '50.

STEVENS, GLENN F., Elk, Washington. Law; Phi Delta Phi; Member of Executive Committee.



STOCKER, PAUL, Seattle, Washington. Law; Phi Delta Phi, Vice Dean; Fulbright Scholarship.

STOCKS, LAWRENCE, Portland, Oregon. Biology; Phi Delta Theta, President; Blue Key; Mu Epsilon Delta; Letterman's Club; Baseball, letter '49; Inter-Fraternity Council Vice President.

STONE, GLORIA, Hood River, Oregon. Music; Delta Gamma, Secretary '48, '49; Mu Phi Epsilon, Secretary '48, '49, Treasurer '49, '50; A Cappella Choir; Annie Barrett Memorial Scholarship '48; Freshman Glee Class Music '48; Messiah.



STONE, NORMAN, Salem, Oregon. Biology; Sigma Chi; Collegian Feature Editor.

STRAUMFJORD, AGNAR ALLEN, Salem, Oregon. Mathematics-Chemistry; Beta Theta Pi, Bowling Team '49.

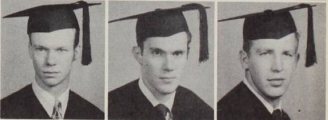
TAYLOR, EVELYN, Haines, Oregon. Spanish; Chi Omega, Chapter Correspondent; Sigma Delta Pi, President; YWCA; Young Republicans Club; International Relation Club; Pepcats, Secretary.



THORN, JERRY O., Portland, Oregon. Sociology-Psychology; Psychology, Vice President; Intramural Sports.

TILLOTSON, DELBERT E., Portland, Oregon. Business Administration; Phi Delta Theta, Treasurer; Phi Eta Sigma; Alpha Phi Omega; Finance Manager of Student Body Educational Activities Committee.

TODD, ROGER V., Dayton, Oregon. Law.





TOLLE, DAVID S., Hollywood, California. History.
TOMLINSON, GEORGE K., Portland, Oregon. Law; Theta Delta Chi at University of Washington; Delta Theta Phi.



TRIPP, RUSSELL W., Albany, Oregon. Political Science, Senior Scholar; Beta Theta Pi, Vice President '47, '48; Forensics '47, '48; Homecoming Manager '48, '49; Representative to Student Council '48, '49; Blue Key; Alpha Phi Omega; Secretary-Treasurer of OPCL; President of ASWU; Wesley Cabinet.
WADSWORTH, BEVERLY ANN, Salem, Oregon. Health and Physical Education.



WAGNER, IRVING J., Salem, Oregon. Business Administration.
WALSER, DORIS F., Salem, Oregon. Music.



WALT, THEODORE S., Salem, Oregon. History.
WANN, THOMAS, Roseburg, Oregon. History.



WARDIN, ALBERT JR., Hillsdale, Oregon. History; Phi Eta Sigma, Historian; International Relations Club, Treasurer; Inter-Varsity Christian Fellowship, Vice President, Secretary-Treasurer; Willamette Honor Scholarship
WASHBURN, FRANK, Portland, Oregon. Sociology, Senior Scholar; Beta Theta Pi; Sigma Alpha Chi; Blue Key; YMCA; Phalanx; Westminster Fellowship; Yell King '47, '48; Freshman Class Vice President; Representative to Student Council '48, '49; Two School Service Keys.



WHITE, ROBERT L., Portland, Oregon. Physical Education; Sigma Alpha Epsilon; Football '46, '47, '48, '49; Baseball '48, '49, '50; "W" Club; Intramural sports.
WILCOX, MARY ELLEN, Salem, Oregon. Economics; International Relations Club; Philosophy Club.

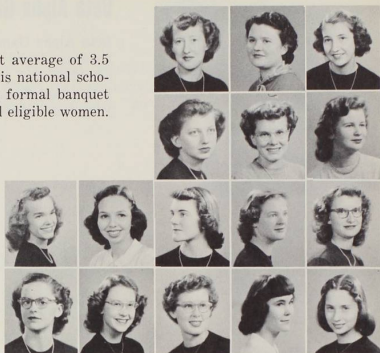


WILHELM, INIE LOU, Portland, Oregon. English; Delta Gamma, Rush Chairman, Scholarship Chairman, Vice President, President; Cap and Gown, Historian; Pepcats; Future Teachers of America; Bowling League; Wallulah Copy Editor; Junior Class Treasurer.
WILSON, LENORE, Salem, Oregon. Business Administration; Chi Omega, Treasurer, House Manager.
WOOD, DOROTHY, Mayfield, Washington. Drama-Speech; Alpha Chi Omega, Corresponding Secretary; Theta Alpha Phi, Secretary; Future Teachers of America, Secretary; Radio Workshop; Representative for FTO; Collegian Staff; YWCA; Drama.



Alpha Lambda Delta

All women obtaining a grade point average of 3.5 are eligible for membership into this national scholastic honorary. The group held a formal banquet during the year plus a mixer for all eligible women.



B. Holmes
J. Parker

P. Jones
D. Saabye

J. Aitken
B. Gustafson
B. Kemmerich
P. Stanton

G. Blue
R. Harris
D. McCain
M. Stephens

D. Caspar
E. Holland
A. Miller
R. M. Wilhoit

J. Ellis
R. Gouchnor
L. V. Hiebert
W. MacDougall



C. Gutzler
C. Hull
M. McClanahan

G. Halliday
T. Loder
W. Merriam



Phi Eta Sigma

Men are eligible for Phi Eta Sigma if, during their Freshman year, they have maintained a 3.5 average for the first semester or an accumulative of the same at the end of the year. This year the group was visited by the national president.

Beta Alpha Gamma

Beta Alpha Gamma, a Sophomore women's service honorary based on active participation in campus activities and maintaining high scholarship. The BAGs take Tuesday chapel attendance and held a joint dinner-dance with the SAX.



B. Gustafson



P. Craig
M. Hutchinson
B. Kemmerich
D. McCain
J. Oliver
P. Stanton

C. Easton
J. Johnson
M. L. Lee
S. Mellor
D. Spellbrink
R. M. Wilhoit

Couples enjoyed dancing at the co-sponsored formal dinner-dance



R. Beals
S. Bliss
C. Goetzler
J. Larson
B. MacDougall
D. Nicoll

D. Benson
D. Card
G. Halliday
T. Loder
L. Maudlin
L. O'Dell



W. Merriam



Sigma Alpha Chi

Belonging to this men's honorary requires creditable scholarship, leadership and outstanding qualities of character of its members. President Bill MacDougall led the group through a successful year in assisting with campus events.

Cap and Gown

Cap and Gown is a Senior women's honorary, equivalent to the national Mortar Board in which they are striving for membership. One of its main projects is to check Thursday chapel attendance.

R. Adams
D. Cleaver
J. Gunn
R. Leter
A. McMullen
R. Rhoads

J. Brown
A. Dimond
G. Lawrence
J. Martin
B. McMullen
B. Skirvin

J. Christensen
D. Endsley
H. Lorenz
R. McCoy
E. Motschenbacher
L. Stocks



G. Oliver
R. Tripp

C. Patterson
F. Washburn



B. Ferguson
L. F. Showacy

G. Bowles
D. Graeg
I. L. Wilhelm

Blue Key

This year, Blue Key presented to the university a trophy which is to serve as a symbol denoting rivalry between Lewis and Clark and Willamette. The winner of each game played by the two teams retains its possession until the other team wins.

Alpha Phi Omega

Alpha Phi Omega is a Boy Scout honorary for all men who have had scouting experience and are interested in continuing their service along these lines. The members take Thursday chapel attendance along with Cap and Gown and check coats at campus dances.



W. Hansen
E. Motschenbacher

D. Hartley
G. Oliver

K. Holmes
L. Reed

J. Coen
A. Goudy
J. Lacey
W. Schmidt

L. Cramer
S. Green
D. Malagamba
D. Tillotson

E. Gottfried
H. Hadley
J. Martin
R. Tripp

Mu Epsilon Delta

Mu Epsilon Delta is a local fraternity composed of all science students excluding Freshmen. A written paper on some subject in the science field is required for membership. The organization was led by Cole Stephens this year.



One of the guest speakers who addressed the group during the year

Mu Phi Epsilon

This national music honorary is open to music majors with an accumulative grade point of at least 2.8. Seven new members were initiated this year. Under the able direction of its President, Betty Kuhlman, the organization held its annual Musical and Silver Tea.



G. Allen
T. Curran
B. Holmes
J. Parker

M. Benard
L. Gottwald
J. Johannaber
M. Powell

G. Blue
B. Gustafson
B. Kuhlman
J. Rice

D. McCain
N. Smedley

B. Nagl
G. Stone

Sigma Delta Pi

All Spanish majors with a grade average of 3.0 automatically become eligible for this honorary. It has been organized with the purpose of promoting interest in Spanish literature and South American culture.

S. Jobe
R. Patterson
E. Taylor

B. L. Miller
M. Sparks
P. Zahare



Pepcats

Pepcats is composed of all women rooters organized with the purpose to support the student cheering section and present colorful formations during the halves of football and basketball games. In an initiation ceremony supervised by President Jackie Johnson, twenty-four were initiated this Spring.



M. Aldinger
B. Baker

J. Baker
H. Booth
M. Corner
B. Crites
D. Detlofsen
J. Enyvert
D. Ewen

W. Fishback
D. Fisher
B. Freeman
A. Garbarino
B. Gustafson
M. Hawke
M. Hutchinson

J. Johnson
G. Juve
D. Kirtland
T. Klepp
A. Klindworth
A. Koch
D. Koutny

B. Langley
J. Larson
N. Lawson
A. Lilles
E. Martin
C. McCord
D. McCulloch

D. Mears
J. A. Mintonye
B. Moody
L. L. Newton
C. Person
M. E. Phillips
B. Rands

M. L. Ratcliff
M. Roberts
C. Schodde
J. Shepherd
D. Spellbrink
J. Vincent
A. Wilhelm

Tau Kappa Alpha

The members of Tau Kappa Alpha, chosen for outstanding records in forensic contests, have had a busy year participating in speech tournaments and sponsoring a high school tourney in March.



B. Ferguson
E. Motschenbacher

J. Gunn
F. Lockman

T. Scheidel

E. L. Ball
P. Hammond
R. Lindmoed
S. Mellor
M. Sparks

S. Dean
L. Hanson
F. Lockman
D. Place
R. Witham

M. Guice
B. Isham
R. Loter
C. Schodde
D. Wood

Theta Alpha Phi

Membership in this national dramatic fraternity requires participation in at least two major productions on campus and a 2.5 grade point. The organization backs all dramatic productions sponsored by the university.





Thomas Churchill
Merlin Estep
Harry Kraus
Ervin Potter

Gerald Robinson
Paul Stocker
Robert Stultz
George Tomlinson

Delta Theta Phi

Delta Theta Phi is a national legal fraternity which stimulates high scholarship by presenting awards to outstanding law students. During the year, the fraternity members sponsor several dances on campus.

Not Pictured:
Robert Anderson
James Davis
Robert Davis
James Fitzgerald
Joseph Meyers
James Minturn
Joseph Tucker
Wallace Weil
Edward York

Not Pictured:
 Homer Allen
 Elmer Baldwin
 John Dolan
 Harold Eichstadt
 Edward Gideon
 Ortis Gorker
 Omar Halverson
 Wayne Hilliard
 George Jones
 Dale Pierson
 William Pilling
 Henry Ulvin

Phi Delta Phi

Membership in this national legal fraternity is limited to the top one-sixth of the class with initiation being held at the beginning of the second semester. This year the initiation of sixteen new members was held in Portland. The purpose of the fraternity is to serve as an opportunity to review law school courses.



James Bodie
 William Carlson
 John Copenhagen
 Craig Coyner



William Croghan
 Walter Foster
 Robert Gidson
 Kenneth Greene
 Peter Gunnar
 Rex Hardy



Douglas Kaffun
 Murley Larimer
 Joseph Larkin
 John Matheny
 Richard Pickell
 Harold Pierce



Cleo Pomeroy
 Eddie Reed
 Julius Slocum
 Robert Smith
 Glen Stevens
 Glen Sorenson



RUSSELL TRIPP
A.S.W.U. President

Student Body Activities

Russ Tripp, with his friendly greeting and smile is a familiar figure to all students at Willamette. Having led a notable career highlighted by efforts to improve student government, student-faculty relationships and smooth conduction of activities, he proved himself an inspiration to all who had the opportunity to work with him.



First Vice President . . .

ROGER ADAMS had the job of social chairman this year. He maintained a happy-medium in balancing social activities on the calendar.



Second Vice President . . .

ART DIMOND efficiently took charge of election polls, counting ballots, and all the hard work that goes with voting processes. Although it was a great responsibility, Art had no trouble keeping things organized.

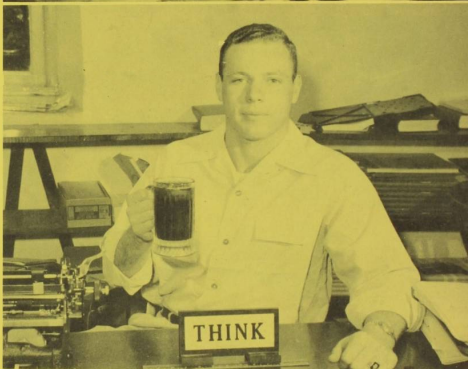
Secretary . . .

of the student body, PAT HOWARD, was kept busy assisting the president, keeping records of all meetings, tending to the files, and all student body correspondence.



Member at Large . . .

CHUCK PATTERSON, served as middle man between the students and opinions concerning the council and relayed student problems to the council members for consideration.





Student Body Office

With Ella Lou Ball, Delores Detlofsen and Margaret Austin in charge, the Student Body Office serves as a convenient place in which thousands of miscellaneous student body affairs are performed. A few include the counting of ballots, distribution of activity cards and mimeographing.



HENRY WILSON signs up for a student activity card with **ELLA LOU BALL**



DELORES and "**SPARKIE**" mimeograph forms for Dean's office



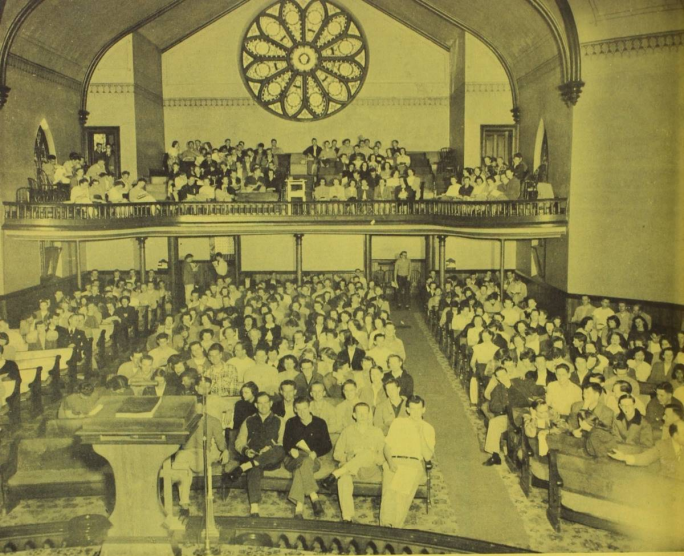
Student Council . . .

is the general coordinating body financing important student projects and acting as a governing body for student body affairs. The council members are Russ Tripp, Bob Bain, Art Dimond, Chuck Patterson, Dick Hartley, Elliott Motschenbacher, Professor Pat Howard, Kollman, Dr. Schulze and Roy Adams (not pictured).

Publications Manager . . .

JACK BROWN, chairman of the Publications Board, has the job of coordinator of campus publications advertising managers, allotting each an apportioned share of finances.





Students visit with each other before Thursday Chapel speaker begins his address



Displaying a bit of his talent, BOB RHOADS proves the hand is quicker than the eye in Senior Assembly

Activities Call for Cooperation

Campus Chest was sponsored this year as a combination of all drives to which students are asked to contribute. The donations hit a high mark and were used for worthy causes. Other activities which called for cooperation were voting procedures, cheering sections at football and basketball games and Thursday and Tuesday Chapels.



Top: JEAN BARBER collects money from donors for Campus Chest drive

Center: Students gather at polls to cast a vote for their choice candidate

Left: JACK KIEKEL, PAT CLICK, BO BROOKS and BUD CORNER, yell leaders, plan the next cheer

Forgetting class affairs for a brief time, president JACK BROWN relaxes on the Junior bench



First Semester

Having reached the third rung of the ladder, the Juniors launched themselves upon a year filled to the brim with activity. Class members gained recognition by holding several major campus offices.



Fall semester officers: WES HEDEEN, sgt-at-arms; MARGIE POWELL, sec'y; JOAN KLINDWORTH, vice-pres; DICK BOLTON, treas

President, BOB SKIRVIN takes time out to smile for the camera man

Second Semester

Unconcerned, as yet, with the problems of graduation, the Juniors mainly concentrated on enhancing their prestige by winning Glee. The Spring term ended finding the class members anxiously anticipating their final year.



Spring semester officers: PAT RYAN, treas; PATTY JO HAMMOND, vice-pres; JACKIE CHUTE, sec'y; NORTON YOUNG-LOVE, sgt-at-arms

First Semester

As the fall term started, the Sophomore class began moving along toward a year of fun and excitement. Homecoming brought them fame as they forced the Frosh to wear their Rook caps the remainder of the year by winning the push ball contest.

LOU PREDILETTO led the class through its first semester

Class officers:
 VIRGINIA WILSON, sec'y; DON
 HOSFORD, sgt-at-arms; PATSY
 OLDER, treas; ROD BEALS, rep;
 LARRY O'DELL, vice-pres; DAVE
 CARD (not pictured)



Class officers: GEORGE MATILE, treas; JOHN MARKOWSKIE, sgt-at-arms; JEANETTE GILBERSON, sec'y; MARK COTTON, vice-pres; BOB WITHAM, sgt-at-arms



Man-about-campus in Sophomore class prexy, SHERM BLISS

Second Semester

Sophomore spirit was maintained throughout the Spring semester under the enthusiastic leadership of president, Sherm Bliss. The Sophs sponsored a carnival donating the proceeds to the new athletic field.



First semester officers:
BOB MILLER, vice-pres;
MARILYN WHALEY, sec'y;
NORM LAWSON and JIM
JACKSON, sgt-at-arms; PRUDY
EDWARDS (not pictured)

RALPH BOLLIGER shouldered
class responsibilities first semester

Class

First Semester

The class of '53 underwent the trials and tribulations of being Freshmen with notable enthusiasm and good sportsmanship. Upperclassmen found that they possessed ability to adjust themselves favorably to the new surroundings and college life.

Second Semester

The winning of second place in Freshman Glee raised the class spirit to new heights during the Spring semester. Hardworking glee committees cooperated in every way with upper classmen to promote the big event.

of 1953

Officers:
JIM JACKSON, vice-pres;
DICK RUFF, sgt-at-arms;
BOB BAIN, rep;
NANCY LAWSON, sgt-at-arms;
SHIRLEY CLIFFORD, sec'y;
SHIRLEY GRIFFIN, treas

Efficient leadership was shown by president, TOM SCHEIDEL



Chapel Board

Chapel programs, both entertaining and educational, are planned and selected by this board and are presented for the benefit of the students.

Dean Geist
Pat Howard
Prof. Ringnald
Coach Stackhouse

Prof. Hill
Prof. Kollman
Dr. Schulze
Russ Tripp



Lowell Maudlin
Marian Sparks

Doug Nicoll
Dean Withey



Awards Board

The Awards Committee, comprised of department heads and student managers, decides upon awards to be given in the sports, music, forensics and journalism departments at the annual awards assembly.



Barnell Ambrose
Dr. Schulze
Coach Stackhouse

Howard Lorenz
Dr. Smith
Russ Tripp

Athletics Board

The board on Athletics acts as an advisory board for all men's and women's university sponsored sports. It also sees that sports are provided with adequate finances.



Roger Adams
Russ Tripp

Delia Saabye
Pat Zahare

Cavern Board

The 'Cat Cavern' has been provided as a convenient and comfortable campus meeting place for students and faculty members. It is the aim of this board to see that it is run effectively and serves its purpose.

Social Activities Board

All social chairmen from the various campus organizations are represented here and advised by the Deans and the Panhellenic advisor. The board meets to plan a social calendar for all events to be held during the year.



Roger Adams
Millard Bates
Ellie Carr



Norma F. Cole
Ann Corthell
Dean Ewalt
Doris Gragg



Joyce Kelly
Eleanor Loveless
Lowell Mandlin
Mrs. Nelson



William Peyton
Don Pritchett
Muriel Roberts
James Spangler



Janet Stark
Ernestine Vosper
Jack Weisser
Dean Withey

Educational Activities Board

Meeting early in the year to decide individual department budgets from money allotted from student body funds, is the chief aim of this board consisting of representatives from the drama, music and forensic departments.

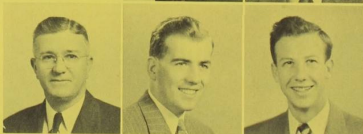


Gerri Bowles
Lu Dene Hargrave
Mrs. Nelson
Doug Sternj

Jack Brown
Ellen Montague
Prof. Ringnalds
Russ Tripp



Dr. Schulze



Publications Board

The Publications Board keeps check on finances and distributes them to the various campus publications edited by the students. The board consists of three faculty members, the publications editors, two student body representatives and the president and secretary.



Left: Editor, ELLEN MONTAGUE steps into office to check on things

Left below: The staff gets busy as deadline time grows near



Above top: First semester News Editor, BILL McDOUGALL, gives out assignments for the next issue

Above: Second semester News Editor, MARY LOUISE LEE, has full schedule

Collegian

Constantly having to meet its deadline, the members of the Collegian staff toil endlessly so that the Friday edition can reach the students with all the latest news, events and features.



Top: **GLENDA McALLISTER**, rewrite editor and **STAN HAWK**, copy editor spend many hours at the typewriter

Below: **DON PRITCHETT**, advertising manager and **RAY PEARSON**, circulation manager, carry on business

BERT LUND, circulation manager, supervising wrapping papers sent to subscribers; **PAUL SOUTHWORTH**, exchange editor, briefs paper before mailing

First and second semester sports editors, **DALE REYNOLDS** and **DAVE CARD** compare their notes

Editorials and features are done by **WALLY SOUTHARD** and **C. E. WALLACE** for each issue

More news of the social world at Willamette discussed by **MARY LOUISE LEE** and **PRUDENCE CRAIG**





Wallulah

Meeting deadlines, making arrangements with printers, scheduling pictures to be taken, and making finances meet was all in a day's work for LuDene Hargrave, Wallulah editor. The main problem met by the editor and staff was that of photographing which hindered progress considerably.



JIM MILLER, advertising manager, puts finishing touches on his list of advertisers

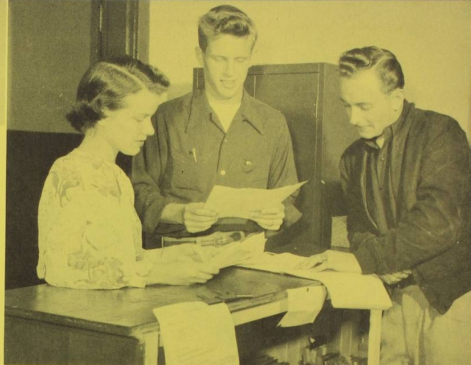
SHERM BLISS, managing editor, checks over last minute detail with the printers before it goes to press



LuDENE HARGRAVE, editor, laughed aside camera difficulties in photo deadlines, produced yearbook in full efficiency



JO ANNE ESTEY, layout editor, skillfully counts inches to complete page lay-out



Ad solicitors, ANN AVRIETTE and GEORGE COLLINS check with JIM MILLER

Copy editor, CLARIBELLE EASTON gets copy ready for publication

LOWELL MAUDLIN, sports editor, checks the dummy

AL WILCOX, carries out his job at the end of a paint brush



The staff in last-minute rush to meet the final deadline





Staff members PAT PARSONS, GLENDA McALLISTER and NANCY PHILLIPS get their instructions from the editor

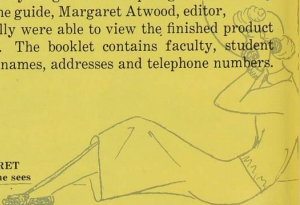


Fusser's Guide

After working many long hours compiling the necessary information for the guide, Margaret Atwood, editor, and her staff finally were able to view the finished product with satisfaction. The booklet contains faculty, student and organization names, addresses and telephone numbers.

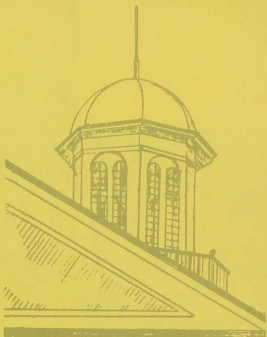
Left above: Editor MARGARET ATWOOD feels relieved as she sees guide go to press

Left: PAT ZAHARE and NONNIE COLE compile lists for the guide





Editor JANET STARK surveys a completed Rook Bible



Rook Bible

Edited to serve as a means to acquaint incoming Freshmen and new students with the traditions, rules and regulations, organizations, songs and cheers of Willamette, the Rook Bible was distributed early in the fall.



PRUDENCE CRAIG and
DIANE PROCTOR spent time and
effort as staff



First semester editor, DON CARPENTER tries in vain to get staff on the ball to meet the deadline

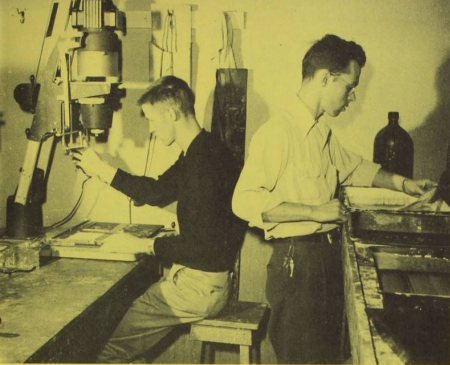
The Puritan

Newly added to Willamette's student publications last Spring, the humor magazine, "The Puritan" lived up to all student expectations this year, with plenty of amusing features and jokes, often characterizing campus activities.

JOHN PIPER, second semester editor, checks on the printing procedure

DON CARPENTER strikes a typically journalistic pose in front of mural tracing journalism's history





LOWELL MAUDLIN and
SHELDON GREEN develop
and print pictures

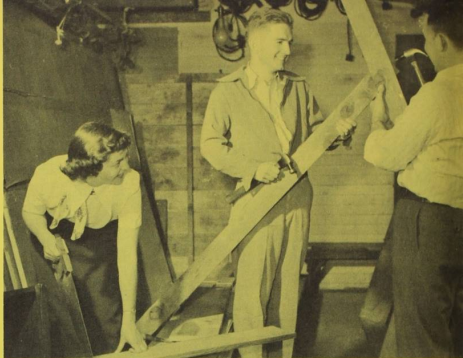


KEN ERICKSON takes out the
camera to get a few
campus shots

Darkroom

Since photography plays such a major role in the production of the Wallulah, it is emphatic that speed and efficiency be the watchwords of those developing and printing the pictures. Although working under pressing deadlines, the staff was always on the job.

Construction on a new set begins preparing for a production



Drama Department

Starting off the season with the successful production "Our Town" the drama department went on to produce "Ghosts" and the May Weekend play, "The Man Who Would Be Sick."



Left above: It's make-up time behind the scene as grease paint helps transform character

Left: A humorous moment during rehearsal of the May Weekend play

Right: Practice at the mike
for cast smooths out rough spots

Below: SUE MELLOR,
RAY LOTER prepare for
"On the Air" signal



University Workshop

"Willamette Firesides" gives laughs, chills, and songs to all the Willamette listeners and those many townspeople who tuned in regularly to hear the Workshop's Monday evening program.

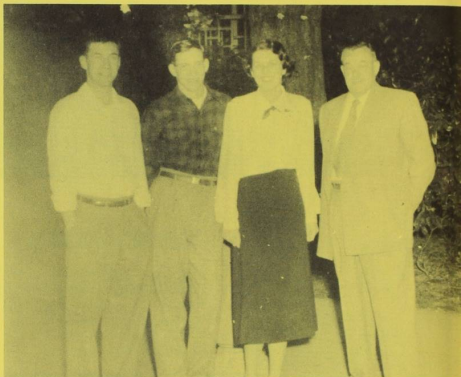


Left, above: Scripts roll out of the
typewriter and are ready for work

Left:
Then over the radio station:
"Willamette Fireside" is on the air

Forensics

Capturing victories in everything from debate to humorous and informal speaking the Willamette forensic team had another record year. Under the coaching of Frank Lockman, the group went on several tours competing in contests.



The varsity team:
JACK GUNN, TOM SCHEIDEL,
BETTY FERGUSON, and
FRANK LOCKMAN

Right: Junior forensic speakers in men's division were KEITH and KENT LAWRENCE, MARK McCLANAHAN and JIM WOOD



Right below: Junior women's division consisted of JEAN KYLE, NANCY MARKS, ARDITH BAILEY, and CAROLINE MATTER



The bank "gives out" with one of its peppy rhythms



Band

Outside of adding the vital zip to football games and rallies, the band showed it could also hit a serious note when it played in what was termed the most popular chapel of the year. The band also left Salem to travel to various cities presenting a concert.



Brass section gets some solo practice on the side



Professor Brennen ably directs the band to produce such fine results



Under the direction of Dean Geist,
a section of the choir warms up

A Capella Choir

The Willamette A Capella choir furthered its outstanding reputation as one of the nation's top college choirs, as it presented a number of exceptionally well-sung selections during their Spring concert hour. The group also served at home as it took active part in Thursday Chapel programs.



The grand results didn't come easily
for it takes many long, hard hours
of practice and more practice



The women's section of the choir harmonize on a selection

Women's Chorus

Occasionally Thursday chapel singers were the women's chorus which presented many vocal arrangements under the able direction of Mrs. Topping.



Like the A Capella choir, there are hours of practice for the women's chorus



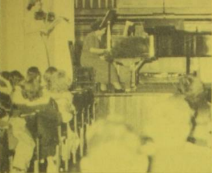
Practice and more practice as the orchestra assembles in music annex

Orchestra

Boasting a musically talented string-quartet, the Orchestra exhibited outstanding ability which is hard to beat. It displayed excellent talent for accompanying in the presentation of the "Messiah" and held several concerts.



Soft tones of the violins blend with those of the bass viol



DORIS McCAIN plays violin solo
accompanied by GLADYS BLUE

Recitals

Recitals serve for students in applied music much like an examination, but differ in that they are open to the public. This affords the music students a chance to play before an audience and gain constructive criticism.



CLIFF GREGG'S recital consisted
of selection on the organ



Piano recital consisting of
outstanding playing was given
by JOHN KAEMMER
in the music school

Future Teachers of America

For those students interested in the educational field, FTA has been organized. The group sponsored weekly broadcasts over KOCO dealing with educational problems and the members also took part in FTO programs at state convention.



S. Allen
C. Bowe
F. Nelson
R. Robbins

G. Ashford
B. Johnson
R. Rhoads
D. Wood

A bi-monthly FTA meeting in Chresto



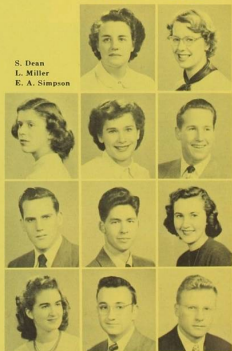
F. Carlson
L. Horsley
D. Nusom
J. Wilcox

A. Corthell
A. Miller
M. Quamme
A. Yusha

Independent Club

The Independents were led through a successful year under first and second semester presidents Lawrence Miller and Jim Wilcox. A Hard Times Party, Spring Formal and beach trip were a few of the activities that topped their social calendar.

S. Dean
L. Miller
E. A. Simpson



International Relations Club

Affording the opportunity for students to study and gather knowledge of foreign affairs and creating better understanding of foreign students on campus is the purpose of this organization. This year, the club sponsored a talented troupe of Austrian entertainers.



R. Brown
A. Lien
L. Pospisil

G. Chohan
J. Pierce
R. Rhoads

W. Albright
R. Gochnour
Z. Pospisil
M. E. Wilcox

Ski Club

For the benefit of experienced as well as amateurs, the Ski Club was organized to serve as an outlet for recreation and learning. Club members are also encouraged to participate in races held at the Mt. Hood Ski Bowl.



A ski club member, Dolores Spelbrink, executing a difficult turn at Hoodoo

Lettermen's Club

Club members consist of men who have earned letters in the various sports offered. The club is active throughout the year sponsoring the Varsity Ball, the Kangaroo Kourt and the Homecoming Freshman Leaf Rake. This year the group was headed by Roy Harrington.



Officers: CHUCK BOWE,
ROY HARRINGTON, and
PETE BRYANT



Lettermen club members
participating in a discussion
at a meeting



Lester Aldrich
Vincent Aleksa



Burnell Ambrose
Millard Bates
Rod Beals
Al Blasic
Chuck Bowe
Dick Brouwer



Pete Bryant
Bob DeBord
Art Dow
Al Fedje
Frank Gatchell
Gerald Grimm



Ray Harrington
Bob Johnson
Ted Loder
Douglas Logue
Howard Lorenz
Ray Loter



Chuck Massey
Jack McCarty
Ray McCoy
Bob McMullen
Ted Mertz
Al Miles



Al Minn
Larry O'Dell
Chuck Patterson
William Patterson
Gene Peyton
Robert Shangle



Wes Stauffer
Larry Stocks
Desmond Walker
Bob Warren
Lowell Weese
Bob White



J. C. Barber
D. Cleaver
J. Pierce

J. Christensen
A. Dow
P. Shaw

R. Gochnour
M. E. Wilcox

Philosophy Club

Membership is open to any Willamette student and the meetings are held monthly on Sunday evenings. The organization sponsors forums on guidance in social ethics, theological and political philosophy.

M. Atwood
D. Barnhart
L. Parks
L. F. Showacy

M. Austin
B. Ferruson
A. Roberts
J. Thorn



A. Z. Bennett
R. James
P. Sebastian

Psychological Association

The purpose of Psi Chi is to discuss current trends in psychology. The club is composed mainly of psychology majors and sponsors guest speakers and programs for the public.





Women's Athletic Association

W.A.A.'s purpose is to arouse interest in women's sports and membership is based on a point system earned by participation in sports. Its main activity has been a program of helpful instruction for those wanting to enter intramural or intra-collegiate sports.

WAA cabinet members:
JOYCE KELLY, ALICE MILLER,
RUTH HAGELSTEIN,
BETTY KOSTENBADER,
and KATHY REVIS



J. Kelly
S. Allen
S. Cogshall
C. Givens
F. Ingram
A. Miller
K. Revis

D. Beachler
S. Dean
R. Hazelstein
C. Kenyon
B. Olson
P. Turner

P. Click
P. Faber
M. A. Hall
B. Kostenbader
E. Beeher
B. Wadsworth



R. Bain
 R. Borquist
 J. Falkenhagen
 J. Hartley
 J. Jackson
 T. Loder
 A. Miller
 H. Peters

C. Barnstable
 J. Brooks
 C. Greig
 J. Harvey
 B. Koh
 J. Magill
 A. Minn
 V. Ruff

M. Bates
 R. Cocking
 W. Gutzler
 R. Issak
 W. Lang
 W. Merriam
 W. Moore
 R. Smith

D. Nicoll
 W. Stauffer

J. Osborne
 F. Washburn

Campus "Y"

The Y.M.C.A. is a service organization serving Willamette and community and was led by Al Minn this year. It sponsored several bank drives for foreign students, the Thanksgiving worship service and the Blood Drive.



Cabinet members during past year



M. Aldinger
J. Gilmer
F. Goodrich
J. Johnson
N. Phillips
J. Stark

J. Gilliland
J. Holbeck
M. Hutchinson
E. Loveless
D. Spellbrink
A. Swanson

L. Holmes
P. Long
J. Oliver
P. Stanton
W. Woodard

Y.W.C.A.

The organization was kept busy with its job of supporting its foreign student, Genowefa Kryzwickowska, with the aid of the Salem Service Clubs and Wesley. Other projects were the Big and Little Sister program, International Weekend and May Weekend Breakfast.

The cabinet pauses during a meeting in Lausanne to pose for camera



Young Republicans

The Young Republican group on campus continued its work in creating interest in politics this year through its active participation in local and statewide undertakings. Willamette was well represented at the annual convention last fall with 25 delegates registering, at which Pat Howard was

elected State Federation secretary and Bill Merriam Northern District chairman, bringing added honor to the chapter.

S. Aschenbrenner
G. Bowles
J. Estey
H. Mader
J. Ragland

E. L. Ball
D. Card
B. Galbreath
B. Merriam
D. Ryan

S. Bliss
E. Carr
R. Hearn
B. L. Miller
M. Spann



D. Hitchman
J. Miller
E. Taylor

P. Howard
L. Miller
R. Tripp

S. Kibbey
T. Osborne
E. Vosper



J. Wolf



UNESCO

The purpose of this national organization is to build a structure of permanent peace by having an understanding of the people of different nations. Led by Lowell Miller the group held its meetings weekly and had discussions and guest speakers on international peace problems.



L. Aldrich
D. Broeder
M. Conklin
G. Kainu

C. Blanes
D. Carpenter
V. Deardorff
G. Kryzkowska

A. Dow
J. Larson

J. du Buy
R. Loter

T. Edwards
G. McClelland

B. Freeman
L. Miller

M. Hutchinson
B. Moore

J. Pierce

S. Aschenbrenner
J. du Buy
A. Minn

C. Blanes
S. Green
R. Robins

Inter-faith Council

The main project here is to plan and supervise Religious Emphasis Week. Membership consists of the presidents of the campus religious organizations. The council, with Dr. Withey as advisor and led by Stan Aschenbrenner, scheduled cooperative religious events with great success this year.

M. Brooks
E. Loveless



Newman Club

The main project of the club this year was to affiliate with the national Newman Club Federation. Also the club sponsored a Catholic Forum in Religious Emphasis Week and carried on a religious, intellectual and social program including several communion breakfasts and a ski trip.



D. Koutny

F. Bomber

E. Cairo

P. Caulfield

H. Cooper

T. Cooper

D. Dougherty

C. Gillihan

E. Gottfried

A. Koch

G. Kryzkwowska

D. Mears

K. Revis

Oxford Club

This club is organized for those of all faiths planning on life-time careers in Religion. From this organization Deputation Teams are sent out to supply the students with experience in preaching. Members also gain knowledge of actual church operation through the regular participation in church work.



Cabinet and advisor, Prof. Clark

Phi Zeta Christo

The club's members consist of the First Christian Church college age group and meet every Sunday evening with a varied program of recreation, worship and guest speakers. The outstanding project of the year was the contributing of clothing to underprivileged children in Europe.



M. Bates
J. du Buy
F. Ingram

J. Doolittle
W. Fishback
G. Juve

D. Lambert

R. Bartlett
B. Boatman
M. Conklin
C. Gregg
K. Lawrence
S. Shipley

R. Beale
M. Brooks
V. Deardorff
S. Griffin
N. Marks
M. Sparks

D. Beery
M. Brooks
J. Freeman
S. Helweg
E. Matachenbacher
F. Washburn



J. Johannaber
C. Person

L. Johannaber
G. Porter

K. Lawrence
B. Redenbaugh



Westminster Fellowship

This college age group of Presbyterian preference students sponsored a benefit dinner this year which was a great success. Their weekly Sunday evening meetings consist of religious discussions and entertaining social hours.



Wesley members close a Sunday evening discussion period with a friendship circle and a benediction

Wesley

Wesley is an organization of students and college-age business people meeting at the First Methodist Church. Sunday evening programs include recreation, supper, worship and discussion. Wesley's purpose is the collective search for life more abundant.



Wesleyans listen to Dr. Hammond cinch a point during a Sunday evening discussion on the subject of immortality

Wesleyans join in a bull session on the sand dunes of Camp Magruder during an Oregon Methodist Student Movement Retreat

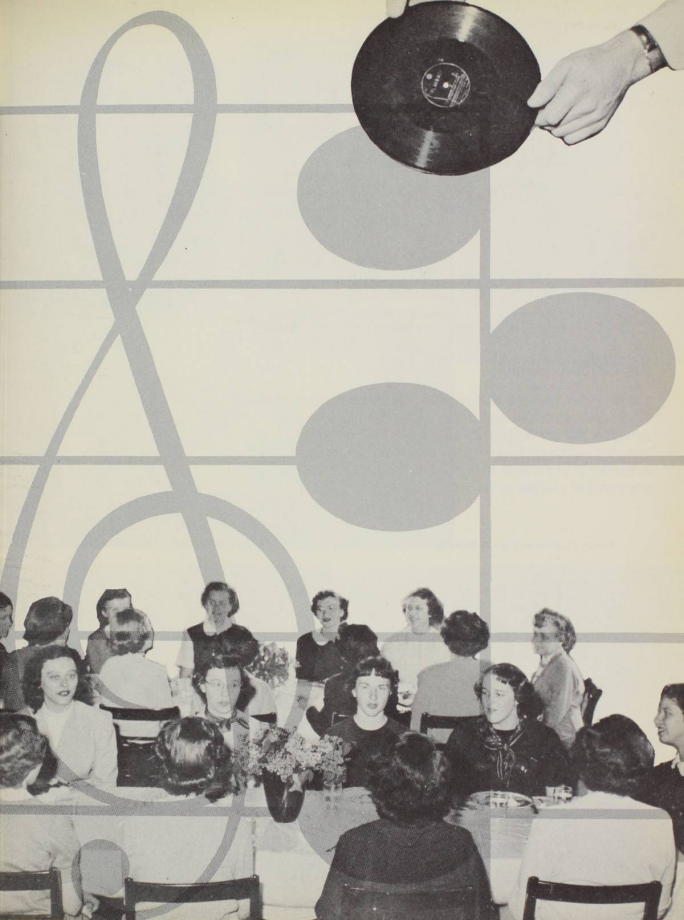


Wesley seeks to help the individual form a philosophy of life by stimulating his thinking and by providing opportunities for worship, fellowship and service.



Wesley cabinet members meet with advisor, Reverend Brooks Moore, for regular planning sessions concerning the year's program of discussions, service projects and retreats

LIVING ORGANIZATIONS





Mrs. Nelson,
Panhellenic Advisor



LaFyrne Showacy

Betty Ferguson,
Roberta Batey

Inie Lou Wilhelm,
Polly Pollock

Avis Roberts,
CarolAnn Snarr

Panhellenic Council

Panhellenic Council is composed of two members from each of the four sororities and the advisor. It is the aim of this group to promote high ideals and standards, work for better sorority relationship and to conduct all general sorority matters. It is assisted in its purpose by Junior Panhellenic composed of pledges as its representatives.

Senior Panhellenic Council Members

Members of the Junior Panhellenic Council



Bishop House

Bishop House, a new edition to the university temporarily serving as a women's living residence, soon took on the collegiate atmosphere by actively participating in campus life. The year was highlighted with various activities including a redecoration project done by the girls, a successful open house and a house dance.



Acting as housemother for 19 girls keeps Mrs. Watts busy but happy

Bishop women relax for a short time before settling down to studying

P. Click
P. Cawfield
A. Corthell
J. Edgell
D. Gragg
E. Jernstedt



J. Kelly
C. Kenyon
J. Koeppe
B. McAfee
C. McCord
E. Martin
B. Menolascina



B. Moody
E. Nunn
P. Pomeroy
R. Patterson
S. Rush
S. Schuerman
F. Wilson



Alpha Chi Omega

Winning the Homecoming noise parade and the scholarship cup, started the year out right for the Alpha Chi Omegas. During the remainder of the year the members held their annual dance, a tea honoring their new housemother and continued planning their new home.



A flood of questions awaiting the end of the telephone call



Above: Mrs. Mendenhall smilingly fulfills the responsibilities of her job

Below: Alpha Chis take advantage of a chance to just loaf

SENIORS

M. Austin
R. Batey
B. Ferguson
P. Howard
F. Ingram



B. Isham
R. James
D. Kimble
JUNIORS
A. Avriette
E. L. Ball
J. Chute
J. Doolittle



L. Gottwald
E. Lovless
M. Lamijarvi
M. Powell
E. Reynolds
P. Ryan
E. Vesper

**SOPHOMORES**

C. Bailey
M. Hawke
M. Hutchinsan
J. Johnson
S. Kibbey
B. Lanzley
D. Spehrink



J. Vincent
A. Wilhelm
FRESHMEN
D. Detlofsen
D. Even
J. Foosee
B. Gustafson
N. Lawson



M. McLaughlin
E. Meeker
J. Moore
M. E. Phillips
M. L. Ratcliff
FLEDGES
A. Bailey
H. Booth



C. Carruthers
S. Clifford
M. Corner
J. Crakes
J. Enyeart
F. Goodridge
D. Gustafson



J. Kirby
J. Kyle
L. L. Newton
V. Peterson
J. Pinkerton
E. Rohn
J. Stewart



Mrs. McCargar, capable and understanding, acts as housemother and helpful advisor



Ordered jewelry, long awaited, arrives at last



An after-dinner confab serves as the "pause that refreshes"



Chi Omega

Starting the year out with the usual flurry and confusion of rushing, the Chi Omegas then resumed normalcy by winning the Homecoming sign contest and presenting, in the Spring, their annual "White Carnation Ball" in honor of the Seniors.

SENIORS

A. Lein
L. F. Showay
E. Taylor
L. Wilson
JUNIORS
A. Adams
J. duBuy
B. Garrett



J. Gilmer
B. Miller
N. Smedley
M. Spann
W. Woodard
P. Zahare
SOPHOMORES
J. Aitken



M. Aldinger
B. Benjamin
E. Brooks
E. Carr
D. Caspar
J. Colony
A. Deakens



C. Easton
B. Eby
B. Freeman
H. Halverson
M. L. Herndon
S. Humble
B. Kemmerich



G. McAllister
M. Thomas
J. Wolfe
FRESHMEN
L. Estinger
D. Englehart
D. Fisher
C. A. Ketyl



J. Koeppen
D. Koutny
D. McCulloch
J. A. Mintonye
R. Price
J. Shipley
A. Stackhouse



J. Taylor
B. Wilson
PLEDGES
B. Crites
N. Drews
A. Garbarino
A. Koch
J. Larson





Delta Gamma

Delta Gammas were in the limelight several times during the year as they entered full swing into the social activities on the campus. An open house, in early fall, gave guests a chance to see the results of the redecoration and the new wing.



Left: Besides her duties as house-mother, Mrs. Marquam is active in community affairs

Below: Singing can be fun and not all work, the Dee Gee way



Intellectual topics even find a place outside of the classroom



SENIORS

M. Atwood
J. Barber
N. Barkley



N. Cale
L. Holmes
B. Leonard
E. Montague
P. Parsons
P. Pollock
G. Stene



D. Walser
I. L. Wilhelm
JUNIORS
S. Ambler
A. Axelson
M. Brooks
J. Holbeck



P. J. Hammond
J. Klindworth
P. Long
N. Phillips
M. Sparks
SOPHOMORES
N. Dickinson
B. Linstrom



D. Lambert
A. Leslie
D. McCain
S. Ozle
P. Packett
J. Rice



D. Saabye
J. Shepherd
P. Stanton
D. Stoddart
A. Swanson
R. M. Wilhoit
V. Wilson

**FRESHMEN**

L. Case
V. Deardorff
P. Faber
M. Gladden
S. Hutchinson
A. Klindworth
N. Marks



S. McElhinney
J. Shipley
PLEDGES
M. Dixon
G. Gossett
B. Tribble
J. Knoll
J. Lucker



C. McCord
S. Moffitt
B. Moody
B. Osborne
D. Palmer
M. J. Phillips
M. Vincent





Lausanne Hall

Lausanne Hall, the home of many pleasant memories for dorm women, consists largely of Freshmen. During the year, the women held their Inter-dorm formal with Bishop House, which centered around the theme "Blue Champagne." They also gave a successful open house.



JANICE GLADDEN acts as accompanist for this singing group

Mrs. Owen devotes her time and energy to her duties as housemother



The recreation room at Lausanne affords a place for general relaxation



A group of Lausanne women chat with their housemother after they finish dinner

SENIORS

S. Allen
M. Cook
M. Fisher
R. Hagelstein

G. Kulbel
J. Mountcastle
B. Olson
JUNIORS
C. Biederman
S. Gargeshall
J. Gilliland
F. Goodridge

M. Hall
R. Patterson
E. Reeber
G. Simons
SOPHOMORES
D. Beachler
U. Boysen
R. Harris

W. Hersch
L. Keoloha
J. Kelly
A. Miller
H. J. Mullen
B. J. Norby
B. Redenbaugh

K. Revis
M. Roberts
M. Stephens
B. Tribble
B. Kostenbader
FRESHMEN
J. Aller
W. Aller

E. Anderson
A. Bailey
B. Baker
J. Biden
E. Bolliger
H. Booth
B. Brown

C. Carson
C. Carruthers
S. Clifford
M. Conkin
G. Connell
M. Corner
J. Crakes

B. Crites
V. Deardoff
D. Detlofsen
N. Drews
A. Durbin
L. EATINGER
P. Edwards

P. Faber
J. Foonhee
J. A. Frydy
C. Givens
J. Gladden
S. Griffin
M. Grossenbacher



D. Gustafson
M. Harris
S. Helweg
G. Hoisington
S. Hutchinson
S. Hutchinson



S. Jensen
G. Kainu
M. Kaufman
D. Kirtland
T. Klepp
A. Klindworth
J. Knoll



J. Kyle
J. Larson
N. Lawson
A. Lilles
N. Marks
G. McClellan
D. McCulloch



M. McDermott
M. McLaughlan
D. Mears
E. Meeker
M. Merz
J. Mintonye
S. Moffitt



J. Moore
I. Newhouse
E. Nishioka
C. Norwood
E. Oakes
D. Palmer
V. Peterson



M. E. Phillips
M. J. Phillips
J. Pinkerton
R. Price
B. Rands
M. L. Rateliff
J. Richardson



J. Robertson
J. Rogers
E. Rohn
B. Sherman
J. Shipley
S. Shipley
M. Short

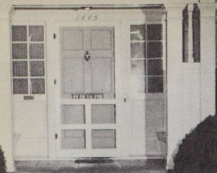


A. Stackhouse
J. Stewart
J. Taylor
M. James
J. Thurston
T. Tsubaki
M. Tveit



M. Warness
G. Walker
T. Walker
L. Wallace
B. Weber
W. Wheller
M. Whaley





Pi Beta Phi

Pi Beta Phi took its share of royalty this year, claiming the "Sweetheart" trophy and the Varsity Queen. The honor of having two publication editors also came to the group and all were kept busy with various house affairs.



Top: Mrs. Weyrauch cheerfully shoulders the various responsibilities of her job

Above: A group converse while they wait for the dinner bell

Left: Pi Phis while away the time playing a game of cards

SENIORS

G. Bowles
M. Muckle



B. Naal
A. Roberts
JUNIORS
N. Adama
D. Arpke
D. Banz
M. Benard
M. Guice



N. Haynes
L. Hargrave
J. Kell
H. Oakes
D. Proctor
J. Stark
K. Stark

**M. J. Wigginton**

SOPHOMORES
P. Craig
J. Gilherson
M. L. Lee
M. Lettken
S. Mellor
C. Schodde



C. Snarr
J. Haberle
P. Koupal
J. Oliver
J. A. Estey
J. Estey
FRESHMEN
B. Baker



G. Connell
P. Edwards
S. Griffin
S. Helweg
M. Kaufman
A. Lilles
M. McDermott



D. Mears
B. Rands
J. Robertson
J. Rogers
C. Spencer
B. Weber
PLEDGES
A. Bliss



J. A. Frady
M. Harris
E. Morley
C. Person
B. J. Simpson
J. Richardson
FOREIGN GUEST
G. Kryzkwowska





The chaperones take time out to have refreshments and visit

Independents

All unaffiliated town and campus students have organized themselves as an Independent group. During the week they take advantage of the comfort of the 'Cat and make it their home away from home. Independent men were active in sponsoring a St. Patrick's Day dance this Spring.



Sitting this one out, couples relax and make a wish at the wishing well at the St. Patrick's dance



Independents play a quick game of pinochle during the noon hour. For the past two years, this plan has been adopted for entertainment and to get better acquainted

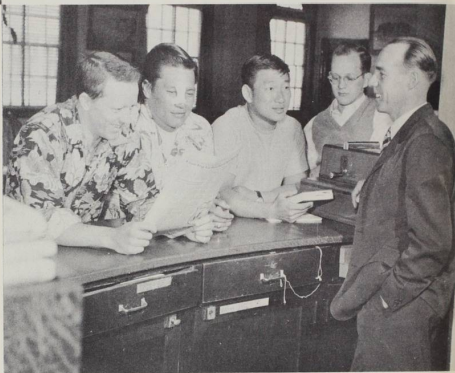


The Cat is a convenient place for town students and campus Independents to get together



Y.M.C.A.

The Y.M.C.A. provides a comfortable living residence for those fellows desiring to live off campus. When they aren't studying, the students are able to take advantage of the recreational facilities afforded by the "Y."



Students stop to chat awhile before going to classes on campus



F. Anderson
M. Cotton
W. Buehning
C. Barnstable
L. Hanson

W. Hilgert
R. Loter
F. Holmes
D. Melson
A. Minn
T. Murray
M. Underwood

Inter-fraternity Council

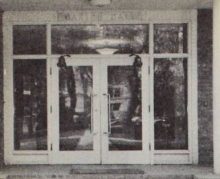
I.F.C. is composed of representatives from each of the four fraternities on campus. Discussing current problems with the aim of reaching a satisfactory solution is its main function. The group also sponsored a semi-formal dance attended by a large crowd.



Left: Dean Withey serves as a worthy advisor to the group

Those comprising IFC are: standing, DEAN WITHEY, BOB MUHR, BUZZ YOCUM, GORDON FERRELL, BOB McMULLEN; kneeling, DICK ENDSLEY, JIM GARRETT, BUD HOLMES, and TOM YATES





Baxter men find giving a dance calls for decorations



Baxterites take advantage of the restful after-dinner pause

Mrs. Johnson capably carries out her job as Mother away from home



Baxter Hall

This year the men of Baxter Hall were kept busy by presenting their dance "Penthouse Serenade," giving and attending firesides, and participating in campus sports. The cooperative spirit and willingness of the 100 men made the year eventful and enjoyable.



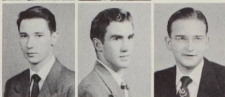
A quick "breather" is taken before going back to classes again

**SENIORS**E. Cairo
P. DavyJ. Janetski
J. Kaemmer
G. LawrenceR. Lindemood
C. Middleton
R. Shannon
P. Smith
JUNIORS
L. Aldrich
S. Aschenbrenner
D. BrandW. Church
G. Fisher
S. Green
W. Ishikawa
J. Lacey
C. Martin
W. MooreE. Nosaka
G. Odgers
D. Poindexter
D. Quinn
D. Reynolds
V. Shangle
J. SpanglerW. Stauffer
P. Stoehr
G. Wagner
R. Williams
SOPHOMORES
D. Bell
C. Blanes
W. BoeD. Boudon
P. Dally
G. Davies
W. Galbreath
P. Gallo
E. Gordon
R. GrahamC. Gutsler
G. Halliday
R. Halliday
L. Hamner
W. Hansen
D. Irwin
H. Jole

L. Johnson
D. Logue



J. Magill
D. McBride
J. McCarty



R. Mittledorf
D. Nicoll
D. Nusom
P. Paddock
H. Payne
H. Peters
P. Shaw



W. Stevens
R. Symons
J. Wilcox
F. Winship
FRESHMEN
T. Acheson
R. Bain
R. Bolliger



E. Boothby
B. Borquist
C. Chong
O. Collier
J. Falkenhagen
J. Freeman
R. Gaw



C. Gregg
J. Harvey
J. Jackson
T. Kalez
G. Kelley
S. Kwan
W. Lang



K. Lawrence
K. Lawrence
R. Miller
N. Moodhe
S. Nelson
S. Nicks
D. Parton



D. Perlman
G. Porter
W. Richartz
D. Scarborough
A. Simonson
R. Smith
W. Wittenberg





Beta Theta Pi

Beta Theta Pi was able to permanently possess the trophy for once more winning the song contest for all Beta Chapters in the Pacific Northwest this year. In the Spring, a formal dinner-dance was held and the Betas took top place in many of the intra-mural sports.



Left: This scene typifies the end of a day for the Betas

Below: Mrs. Proctor, Beta house-mother, relaxes with the paper



BILL GUSEY tells the fellas just how it all happened

SENIORS

A. Acker
D. Barnhart



W. Bolliger
J. Brazie



D. Breakey
D. Cleaver
T. Edwards



A. Fedje
W. Gusey
R. Gwinn
K. Holmes
A. Straumfjord
T. Tripp
F. Washburn



JUNIORS
H. Carlson
D. Carpenter
J. Carpenter
R. Day
A. Dimond
M. Edwards
R. Endsley



E. Fedje
A. Goudy
J. Gunn
W. Hedeem
A. Isenberg
T. Mertz
G. Oliver



W. Peyton
D. Stearns
R. Wiper
N. Younglove
SOPHOMORES
K. Adams
R. Beals
R. Cole



FRESHMEN
R. Bain
R. Bolliger
C. Greg
J. Jackson
P. Jewell
K. Lawrence
K. Lawrence





Phi Delta Theta

Honoring their dates at their formal dance "Kannibal Kingdom" held in the Spring, capturing the Homecoming sign contest trophy, and presenting their annual "She Delta Theta" were events which topped the Phi Delta Theta's year.

Mrs. Dyer, or "Mom" to her boys, takes time out for knitting



Above: Phi Deltas go domestic and serve themselves a quick snack

Left: A few minutes of relaxation after lunch are thoroughly enjoyed by these "Mighty Phis"

SENIORS

R. Adams
G. Cline
P. Cole



S. Faminow
R. Gore
R. Hartley



C. Johnson
C. Patterson
C. Stephens



L. Stocks
D. Tillotson
D. Walker
JUNIORES
J. Griffith
J. McDougall
W. Merriam
B. Murray



D. Phillips
R. Skirvin
R. Taylor
SOPHOMORES
D. Benson
W. Bissell
R. Coffey
J. Garrett



J. Gay
C. Gillihan
M. Glenn
R. Hearn
C. Jackson
J. Miller
P. Neiswander



L. O'Dell
D. Place
L. Prediletto
H. Summers
R. Unruh
J. Weisser
FRESHMEN
R. Cocking



G. Collins
A. MacGregor
G. Meinke
J. Piper
L. Ranton
PLEDGES
G. Buland
R. Cocking



M. Cotton
G. Daus
R. Hawley
A. Hilmer
N. Lawson
D. Ryan
L. Sawyer





Sigma Alpha Epsilon

Sigma Alpha Epsilon's year was jam-packed full of activities and studying, was climaxed by a formal dance held in the Spring as well as a beach trip. The SAEs were well represented in collegiate sports and took in a good many new pledges.



Left: A friendly get-together reveals the happenings of the day

Below: Mrs. Higby takes advantage of study hours for her personal life



"Cookie" appears to be uninterested in a musical education

SENIORS

D. Barkley
P. Bryant
H. Lorenz



R. McMullen
F. Nelson
G. Pratt



G. Ringle
R. Robins
D. Talle
R. White
JUNIORS
C. Bowe
L. Cramer
O. Davies



R. DeBord
W. Harryman
A. Miles
E. Peyton
F. Phipps
SOPHOMORES
V. Aleska
P. Boyle



R. Brouwer
E. Caley
J. Ellis
C. Girod
E. Kerr
C. Nordhill
D. Pritchett



R. Shangle
FRESHMEN
D. Beery
D. Dougherty
E. Duvell
T. Edwards
J. Formick
J. Grabow



W. Hess
W. MacDougall
W. Mulkey
F. Riebe
P. Schrader
J. Skimas
R. Ulrich

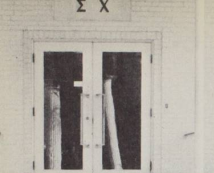


H. Wilson
J. Wood
PLEDGES
B. Boatman
J. Caen
D. Gunther
D. Hosford
S. Lawrence



G. Mallory
G. McHale
H. Nelson
J. Norvell
R. Sanders
W. Stanton
L. Weese





Sigma Chi

With the annual presentation of their Sweetheart Ball, intermural sports and a beach trip, the Sigma Chis found themselves busily engaged in their share of campus activities. They also undertook a project to begin redecorating their basement which is to be completed during the summer.



Left: Mrs. Furman is found to be a true mother by the Sigs and Toni, their Scotty



Above: Keeping up on the latest serves as a favorite pastime

Right: Like most fellows, Sigs find spare time for telling a few amusing jokes



SENIORS

T. Busselle
W. Eckles
R. Fatland



G. Ferrell
F. Lockman
R. Loter



R. McCoy
R. Nickols
W. Olsen
R. O'Neill
T. Osborn
S. Pitner
W. Rose
N. Stone

**JUNIORS**

B. Ambrose
D. Beckett
R. Bolton
D. Broeder
J. Brown
A. Lund
H. Mader
D. Mallory
T. Murray
R. Pearson
W. Ross

**SOPHOMORES**

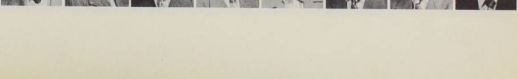
D. Anderson
J. Anicker
S. Bliss
A. Franki
J. Hartley
D. Humphries
T. Joseph
G. Juba
E. Lafky
C. Massey
L. Mandlin
D. Montag
C. Robinson

**FRESHMEN**

P. Southworth
W. Snyder
M. Underwood
D. Webb
J. Wilson
R. Witham
D. Yunker
FRESHMEN
J. Bonowitz
J. Harvey
D. Hitchman
E. Jarman
J. Larson
R. Miller
G. Porter
P. Ringle
D. Ruff



R. Scheidel
R. Wilson
PLEDGES
W. Boe
D. Green
L. Hammer
J. Hande
J. Keikel
R. Smith





W. Albright
 G. Allen
 A. Anderson
 L. Andrews
 R. Andrews
 D. Asher
 G. Ashford
 K. Asker
 D. Baker
 W. Baldwin
 P. Baltzer
 M. Baney
 B. Banks
 L. Barham
 R. Bartlett
 M. Bates
 S. Bates
 L. Bellinger
 V. Benner
 A. Bennett
 J. Benninghoff
 M. Bjorke
 A. Blacic
 F. Blank
 G. Blue
 J. Bodie
 F. Boher
 W. Bonesteel
 D. Bosell
 J. Bradshaw
 N. Bretzel
 J. Brooks
 W. Brooks
 D. Brown
 R. Brown
 M. Bergstrom
 J. Burns
 C. Burt
 F. Carlson
 W. Carlson
 G. Chohan
 J. Christianson
 T. Churchill
 B. Close
 B. Cogswell
 H. Cooper
 T. Cooper
 J. Copenhaver
 B. Covert
 P. Cowan
 C. Cuyner
 W. Croghan
 T. Curran
 S. Dean
 D. de Chaly
 A. Dow
 H. Dunn
 B. Dyer
 D. Eastridge
 R. Edmondson
 L. Egan
 D. Ertsgard
 M. Estep
 J. Farrell
 W. Fishback
 P. Fitzsimons
 B. Fortsch
 W. Foster
 J. Franklin
 F. Gatchell
 R. Gibson
 R. Gilbert

D. Githens
 C. Gnakey
 D. Gachnour
 D. Gralop
 F. Gook
 R. Gotchall
 E. Gottfried
 F. Gower

 C. Graber
 K. Greene
 B. Greenwood
 G. Gregory
 G. Grimm
 B. Grindle
 L. Grass
 V. Groves

 F. Graver
 W. Gutzler
 S. Guyton
 H. Hadley
 J. Hakanson
 L. Hamilton
 R. Hardy
 E. Hargreaves

 S. Harper
 R. Harrington
 M. L. Harris
 E. Harvey
 P. Hedeon
 F. Heddes
 W. Heine
 L. Hiebert

 L. Hoar
 E. Holland
 K. Horn
 M. Horn
 R. Horn
 L. Horsley
 R. Howell
 C. Hull

 M. Hunsaker
 D. Isnak
 S. Jafe
 E. Jarman
 S. Jensen
 J. Johannaber
 L. Johannaber
 B. Johnston

 J. Jones
 W. Jones
 B. Jory
 D. Kaufman
 K. Keisecker
 B. Koh
 H. Kraus
 R. Kraus

 B. Kuhlman
 R. Lambert
 M. Larimer
 J. Larkin
 J. Lednicky
 B. Le Files
 B. Lent
 W. Lessick

 W. Lidtke
 J. Loutham
 M. McClanahan
 L. McCoy
 H. McDougall
 D. McMaster
 E. McMullin
 J. Macy





J. Magill
 D. Malagamba
 C. Mary
 J. Martin
 L. Martine-Lally
 R. Marundee
 I. Mason
 J. Matheny

C. Matter
 J. Meir
 A. Miller
 A. Miller
 J. Miller
 L. Miller
 L. Miller
 R. Miller

C. Miner
 L. Monteith
 G. Moore
 R. Moore
 D. Morris
 A. Muise
 E. Mulkey
 G. Mumpower

V. Myhre
 J. Neal
 D. Nonchester
 E. Nordyke
 E. Obert
 H. Odle
 A. Olson
 R. Olson

A. O'Mara
 J. Osborn
 M. Panbrum
 C. Pappert
 L. Parke
 J. Parker
 C. Parks
 D. Parton

W. Patterson
 B. Pederson
 E. Perkins
 G. Phillips
 J. Phillips
 J. Phipps
 R. Pickell
 H. Pierce

J. Pierce
 C. Pomeroy
 L. Pospisil
 Z. Pospisil
 E. Potter
 N. Potter
 E. Primbs
 M. Quamme

M. Quamme
 R. Rehfield
 R. Reiman
 E. Rittenhouse
 R. Robertson
 P. Rogers
 C. Ross
 B. Ross

J. Rowland
 P. Russell
 M. Sayre
 D. Scarborough
 P. Sebastian
 R. Shelton
 A. Simonson
 E. Simpson

B. Sims
 J. Slocum
 R. Smith
 R. Soles
 B. Sorensen
 W. Southard



P. Stocker
 G. Stevens
 M. Stout
 D. Stratton
 R. Stultz
 T. Subia
 R. Sutch
 K. Sutter



D. Swan
 F. Switzer
 H. Takayama
 J. Thomas
 J. Thorn
 W. Thurman
 A. Tirem
 R. Todd



G. K. Tomlinson
 P. Turner
 G. Ulvin
 J. Vanderwal
 J. Wagner
 N. Well
 W. Wallace
 E. Wallis



T. Walt
 T. Wann
 A. Wardin
 R. Warren
 C. Wilber
 B. Webster
 E. Weinstein
 W. Welch



D. Whitely
 M. Welch
 F. Wilson
 J. Wilson
 M. Wood
 E. Young
 A. Yusha
 P. Zosel



A

A CAPPELLA CHOIR, 38
 Acheson, Thomas, 81, 207
 Adams, Alice, 191
 Adams, Kenard, 209
 Adams, Nancy, 199
 Adams, Roger, 87, 118, 129, 138, 211
ADMINISTRATION, 90
 Aitken, Joan, 127
 Albright, Warren, 171, 216
 Aldinger, Marjorie, 132, 177, 191
 Aldrich, Leslie, 173, 179, 206
 Allen, Vincent, 63, 75, 173
 Allen, Glennis, 118, 131, 216
 Allen, Shirley, 82, 102, 118, 175, 196
 Aller, Wilma, 196
 Aller, Harriet, 196
ALPHA CHI OMEGA, 188
ALPHA LAMBDA DELTA, 127
ALPHA PHI OMEGA, 130
 Amblor, John 81
 Amblor, Shirley, 193
 Ambrose, Burnell, 64, 69, 173, 215
 Anderson, Alton, 216
 Anderson, David, 78, 215
 Anderson, Eloise, 196
 Andrews, Leon, 216
 Andrews, Richard T., 216
 Annicker, John, 215
 Arpke, Diana, 199
ART, 109
 Aschenbrenner, Stanley, 178, 206
 Asher, Koderich, 216
 Ashford, Grace, 118, 216
 A. S. W. U., 137
ATHLETIC BOARD, 150
 Atwood, Margaret, 117, 118, 158, 174
 Austin, Margaret, 116, 118, 140, 174, 189
 Avrin, Ann, 157, 189
AWARDS BOARD, 150
 Axelson, Alene, 193

B

Bachle, Jerry, 181
 Bailey, Ardith, 164, 196
 Baker, Connie, 189
 Baker, Robert, 141, 149, 176, 207, 209
 Bain, Barbara, 132, 196, 199
 Baker, Donald, 118, 216
 Baker, Joyce, 132
 Baldwin, William, 216
 Ball, Ella Louise
 Baltzer, Sheila, 216
 Baney, Muriel, 216
BAND, 168
 Banks, Betty Jean, 216
 Barber, Jean Carrico, 118, 143, 174
 Barkley, Donald, 63, 118
 Barkley, Nancy, 118
 Barnhart, Dan, 118, 174, 209
 Barham, Lawrence, 118, 216
 Barnstable, Cowell, 118, 176
 Bartlett, Ronald, 181, 216
BASEBALL, 70
BASKETBALL, 65
 Bates, Millard, 173, 181, 216
 Bates, Stanley, 216
 Batey, Roberta, 117, 118, 189
BAXTER HALL, 204
 Beschler, Dorothy, 175, 196
 Beah, Rod, 128, 146, 173, 181, 209
 Beckett, David, 215
 Beddoe, Arthur, 64
 Beyer, David, 63, 181, 213
 Bell, Donald, 206
 Bellinger, Hugh, 69
 Bellinger, Lucy, 216
 Bernard, Martha, 131, 199
 Benjamin, Barbara, 191
 Benner, Virginia, 216
 Bennett, Arlene Zastera, 118, 174, 216
 Bennett, Robert, 107, 118, 216
 Benninghoff, Joseph, 216
 Benson, Donald, 87, 128, 215
 Bergstrom, Max, 118
BETA ALPHA GAMMA, 128
BETA THETA PI, 208
 Biden, Jean, 196
BIOLOGY-BOTANY, 106

BISHOP HOUSE, 187

Bissell, William, 47, 87, 211
 Bjorkle, Mavis, 216
 Biacic, Albert, 75, 118, 173, 216
 Blanes, Carl, 178, 206
 Blank, Franklin, 216
 Bliss, Audrey, 199
 Bliss, Sherman, 49, 128, 147, 156, 178, 215
 Blue, Gladys, 127, 131, 169, 216
BLUE KEY, 129
 Boatman, Bruce, 63, 181, 213
 Boe, Frances, 216
 Boe, Wallace, 77, 206, 215
 Bollinger, Evelyn, 196
 Bomberger, Ralph, 44, 86, 148, 207, 209
 Bonner, Francis, 180, 216
 Bollinger, Wesley, 86, 118, 209
 Bolton, Richard, 144, 215
 Bonner, Francis, 180, 216
 Bonawitz, Joseph, 64, 213
 Bonstele, Wallace, 119, 216
 Booth, Harriet, 132, 196
 Boudon, Donald, 207
 Boothby, Edward, 207
 Bouquist, Robert, 176, 207
 Bosel, David, 216
BOTANY, 106
 Bow, Chuck, 63, 64, 72, 73, 173, 213
 Bowles, Geri, 119, 129, 178, 199
 Boyle, Peter, 65, 213
 Boyden, Ursula, 196
 Bradshaw, James, 216
 Brand, Donald, 206
 Brand, Joseph, 36, 106, 119
 Breakey, Donald, 119, 209
 Broder, Dale, 119, 179, 215
 Brooks, William, 216
 Brooks, Bo, 143, 191
 Brooks, Jack, 216
 Brooks, Marilyn, 179, 181, 193
 Brooks, Martha, 181, 193
 Browner, Richard, 63, 68, 69, 73, 173
 Brown, Bonnie, 196
 Brown, Darrel, 216
 Brown, S., 129, 141, 144, 215
 Brown, John, 119
 Brown, Robert, 216
 Brown, Roland, 171
 Bryant, Peter, 63, 69, 119, 173
 Buell, Donald, 75
 Bushning, Walter, 96, 119
 Buland, George, 211
 Burns, James, 216
 Burt, Charles, 216
 Busselle, Theodore, 119, 215

C

Cairo, Edward, 99, 117, 119, 180, 206
 Calico, Eldon, 63, 213
CAMPUS "Y", 176
CAP AND GOWN, 129
 Card, David, 85, 128, 155, 178
 Carlson, Emil Herbert, 209
 Carlson, Freda, 216
 Carlson, William, 119, 216
 Carpenter, Donald, 78, 160, 179, 196
 Carpenter, Jim, 209
 Carr, Eleanor, 178, 191
 Carruthers, Carl, 196
 Carson, Carol, 196
 Case, Leah, 103
 Casper, Dorothy, 127, 191
CAVERN BOARD, 153
 Cawfield, Patricia, 180, 187
 Chambers, Stanley, 74, 86
CHEMISTRY, 107
 Chohan, George, 171, 216
CHI OMEGA, 190
 Chong, Charles, 207
 Christensen, John, 63, 104, 119, 129, 174, 216
 Church, William, 206
 Churchill, T. W., 119, 216
 Chute, Jacqueline, 145, 189
 Clabelagh, Keith, 64
 Cleaver, Dale, 78, 109, 119, 129, 174, 209
 Click, Patricia, 143, 175, 187
 Clifford, Shirley, 36, 196
 Cline, Gordon, 119, 211
 Close, Bertrand, J., 216
 Cloyd, Charles, 63
 Cocking, Richard, 211
 Cocking, Rollin, 77, 176, 211
 Con, Jerry, 130
 Coffey, Ronald, 87, 211
 Coggeshall, Susan, 175, 196

Cogswell, William, 119, 216
 Cole, Richard, 209
 Cole, Norma Faborg, 119, 158
 Cole, Paul, 119, 211
COLLEGIAN, 154
 Collier, Orin, 207
 Colony, Jo, 191
 Collins, George, 157, 211
 Conkin, Margaret, 179, 181, 196
 Connell, Grace, 196
 Conners, Cecil, 64, 79
 Cook, Marilyn, 196, 199
 Cook, Farrell E., 119
 Cooper, Henry, 119, 180, 216
 Cooper, Thomas, 120, 180, 216
 Copenhaver, John, 120, 216
 Corner, Ivan, 143
 Corrie, Marie, 44, 132, 196
 Corthell, Ann, 187
 Cotter, Mark, 81, 147, 211
 Covert, William, 120
 Cowan, Peter, 216
 Coyner, Craig, 216
 Craige, Prudence, 128, 155, 159, 199
 Craigs, Jean, 189, 196
 Cramer, Loy, 63, 130
 Crites, Betty, 132, 191, 196
 Croghan, William, 129
 Curran, Thelma, 120, 131, 216

D

Dailey, B. Paul, 63
 Dally, Paul, 206
 DANKROOM, 161
 Davies, Gilbert, 206
 Davies, Olwyn, 63, 213
 Davy, Peter, 206
 Day, Russell, 86, 87, 209
 D'Eye, Franklin, 60, 64
 Deakin, Arlene, 191
 Dean, Shirley, 56, 133, 175, 216
 Deardoff, Valerie, 179, 181, 193, 196
 DeBard, Robert, 63, 64, 173, 213
 DeChal, Darrel, 216
DELTA GAMMA, 192
DELTA THETA PHI, 134
 Denny, Duane, 43, 78, 81
 Detlofsen, Dolores, 132, 140, 189
 Dickinson, Nancy, 193
 Dimond, Arthur, 52, 55, 129, 138, 141, 209
 Dixon, Marilyn, 193
 Doolittle, Jean, 81, 189
 Dougherty, Douglas, 63, 180, 213
 Dow, Arthur, 75, 112, 120, 173, 174, 179, 216
DRAMA, 213
 Drews, Norma, 191, 196
 duBay, Jeanne, 81, 179, 191
 Dunn, Harvey, 120, 216
 Durbin, Ardath, 196
 Daus, Forrest Glenn, 211
 Duvale, Ernest, 60, 63, 213
 Dvershdal, Norman, 76, 85
 Dyer, Robert, 216

E

Eaton, Claribelle, 128, 157, 191
 Eatisger, Louise, 191, 196
 Eastridge, Donald, 120, 216
 Eby, Betty, 191
 Eckles, Warren, 215
 Edgell, Joyce, 187
 Edmondson, Rex, 99, 120, 216
 Edwards, Miles, 209
 Edwards, Prudence, 196, 199
 Edwards, Thomas, 63, 120, 213
 Edwards, T. L., 78, 179, 209
 Ellis, James, 63, 127, 213
ECONOMICS, 100
EDUCATION, 102
EDUCATIONAL ACTIVITIES BOARD, 151
 Endley, Richard, 54, 86, 87, 129, 203, 209
 Engler, Dorothy, 191
ENGLISH, 103
 Enyavet, Joanne, 132, 189
 Erickson, Kenneth, 161
 Ertsgaard, Duane, 216
 Ester, Merlin, 120, 216
 Estey, Joan, 178, 199
 Estey, JoAnne, 156, 199
 Evans, John, 69
 Evans, Ronald, 64, 87
 Ewen, Doris, 132, 189

F

Faber, Patricia, 175, 193, 196
 Faberling, Jack, 181, 207, 211
 Faminov, Steven, 120, 211
 Farrell, Jack, 216
 Fatland, Robert, 120, 215
 Fedje, Alfred, 57, 64, 66, 69, 86, 87, 120, 173, 209
 Fede, Ed, 209
 Ferguson, Betty, 57, 114, 120, 129, 133, 164, 174, 186, 189
 Fether, Gordon, 120, 207, 215
 Fishback, Winona, 132, 181, 216
 Fisher, Dolores, 132, 191
 Fisher, Gordon, 206
 Fisher, Margaret, 120, 196
 Fitzsimons, Patricia, 216
 Foothie, Mary Jane, 189, 196
FOOTBALL, 61
 Fornick, Joseph, 63, 213
FORENSIC, 164
 Fotsach, Byron, 216
 Foster, Walter, 216
 Frady, JoAnn, 196, 199
 Franklin, Norman, 216
 Franke, Allan, 215
 Freeman, Barbara, 132, 179, 191
 Freeman, James, 181, 207
FRESHMAN, 148
FURSER'S GUIDE, 156
FUTURE TEACHERS OF AMERICA, 170

G

Galbreath, William, 77, 178, 206
 Gallo, Phillip, 206
 Garbatino, Audra, 132, 191
 Garrett, Barbara, 191
 Garrett, James, 203, 211
 Garchell, R. F., 73, 173, 216
 Gaw, Richard, 207
 Gay, James, 211
 Gibson, Robert, 216
GEOLOGY, 108
 Gilberson, Jeanette, 147, 199
 Gilbert, Robert, 216
 Gilliban, Chester, 191, 211
 Gilliland, Janet, 177, 196
 Gilmer, Jean, 177, 191
 Girod, Clifford, 63, 69, 73, 213
 Githens, Delmer, 217
 Givens, Carol, 175, 196
 Gladden, Janice, 180, 194, 196
 Glenn, Michael, 73, 87, 211
 Goakey, Otis, 217
 Goetzler, Charles
 Goodridge, Florence, 177, 189, 196
 Gordon, Ernest, 206
 Gore, Robert, 211
GOLF, 75
 Gossett, Gerry, 193
 Gotshall, Ray, 191
 Gottfred, Edward George, 120, 130, 180, 216
 Gottwald, Lois, 131, 189
 Gochnour, Rosemary, 171
 Gochnour, D. Russell, 105, 120, 127, 171, 174, 217
 Goudy, Alan, 130, 209
 Graber, Carroll, 217
 Graham, John, 213
 Gragg, Doris, 113, 120, 129, 187
 Graham, Robert, 77, 206
 Graslup, Dwight, 196
 Green, Sheldon, 130, 161, 179, 206
 Greene, Dale, 215
 Green, Kenneth, 217
 Greig, Clifford, 169, 181, 207, 209
 Gregory, Gene, 217
 Griffin, Shirley, 149, 181, 196, 199
 Griffith, John, 211
 Grimm, Gerald, 120, 173, 217
 Grindie, Barney, 217
 Groh, Frank, 75, 171
 Gross, Lynn, 217
 Grossenbacher, Mary, 196
 Groves, Vernon, 217
 Gower, Frederick, 217
 Guice, Margaret, 133, 199
 Gunn, Jack, 129, 153, 164, 209
 Gunnar, Edith, 54
 Gunnar, Peter, 121
 Gunther, Donald, 63, 213
 Gusey, William, 127, 208, 209
 Gustafson, Beverly, 127, 128, 131, 132, 189
 Gustafson, Dolores, 189, 196
 Gutzier, Charles, 127, 206, 217
 Gutzier, Jesse, 216
 Guyton, Sophie, 121
 Gwinn, Robert, 121, 209

INDEX

H

Haberle, Joan, 199
Hadley, Homer, 121, 130, 217
Hageman, Ruth, 121, 175, 196
Hakanson, John, 121, 217
Hall, Robert, 64, 76
Hall, Maryann, 175, 196
Halliday, Glenn, 127, 128, 206
Halliday, Roger, 206
Hallin, William, 63
Halverson, Helen, 191
Hamilton, Lyle, 106, 121, 217
Hammer, Louis, 206, 215
Hammond, Patty Jo, 145, 193
Hammond, Phillip, 37, 86, 133
Handle, Jack, 215
Hansen, William, 130, 206
Hanson, Lloyd, 103, 121, 133
Hardy, Rex, 121, 217
Hargrave, Lu Dene, 156, 199
Hargreaves, Edward, 217
Harper, Sidney, 217
Harrington, Roy, 64, 70, 73, 121, 173, 217
Hans, Charles, 18
Harris, Marjorie, 196, 199
Harris, Mildred, 217
Harris, Ruth, 127, 196
Hartman, William, 63, 213
Hartley, James, 176, 215
Hartley, Richard, 116, 121, 130, 141, 211
Harvey, Joseph, 207, 215
Hawk, Stanley, 127, 155
Hawke, Mary, 132, 189
Hawley, Roger, 64, 211
Haynes, Nickie, 199
Hebert, Robert, 75, 178, 211
Hedeen, Paul, 121, 217
Hedeen, Wesley, 144, 209
Hedger, Frank, 211
Heine, Walker, 121, 177
Helwig, Shirley, 181, 196, 199
Helen, Marylou, 191
Hersh, Willetta, 206
Herstrom, Elizabeth, 193
Hess, William, 63, 213
Heibert, L. A. Vern, 127, 217
Higert, Wilbur, 117, 121
Himer, Robert, 211

HISTORY, 112

Hitchman, Donald, 178, 215
Hoar, Leland, 64, 121, 217
Hosington, Guy, 196
Hutchison, Joan, 127, 193
Holland, Edythe, 127
Holman, Frank, 121
Holmes, Kenneth, 113, 121, 130, 203, 209
Holmes, Louise, 177, 193
HOME ECONOMICS, 110
Homes, Beverly, 127, 131
Horn, Martin, 217
Horsely, Lowena, 217
Hosford, Donald, 63, 64, 146, 213
Howard, Patricia, 121, 139, 178, 189
Howell, Robert, 112, 121
Hull, Cyril, 127, 217
Humble, Sarah, 191
Humphries, Donald, 215
Hunsaker, Morris, 217
Hutchison, Marcelline, 128, 132, 177, 179, 189
Hutchison, Sharon, 196
Hutchinson, Shirley, 193, 196

I

INDEPENDENTS, 170
Ingram, Fern, 115, 121, 175, 181, 189
INTER-FAITH COUNCIL, 179
INTER FRATERNITY COUNCIL, 203
INTRAMURALS, 84
I. R. C., 171
Irwin, Donald, 206
Isaak, Richard, 176, 217
Isenberg, Alfred, 209
Isham, Bernice, 55, 122, 133, 189
Ishikawa, Wesley, 126

J
Jackson, Clyde, 211
Jackson, James, 149, 176, 207, 209
James, Marilyn, 196
Jafe, Stanley, 131, 217

James, Ruth, 116, 122, 174, 189
Javetske, John, 75, 122, 206
Jarman, Edward, 215, 217
Jensen, Sheryl, 121, 217
Jerstedt, Edna, 181
Jewell, Paul, 64, 86, 209
Johannaber, Jodie, 131, 181, 217
Johannaber, Louisa, 181, 217
Johnson, Cecil, 64, 116, 122, 211
Johnson, Jacqueline, 122, 132, 177, 178
Johnson, James, 60, 63, 64, 75, 80
Johnson, Linwood, 207
Johnson, Robert, 173
Johnston, Robert, 63, 217
Jole, Harold, 206
Jones, Patricia, 127
Jones, James, 127
Jones, Walter, 217
Joseph, Thomas, 215
Joy, Beverly, 217

JOURNALISM, 104
Joba, George, 215
JUNIORS, 144
Juve, Gayle, 132, 186

K

Kaemmer, John, 55, 169, 206
Kaizer, Anton, 207
Kains, Gloria, 179, 196
Kaufman, Douglas, 217
Kaufman, Margaret Anne, 196, 199
Kawabata, Leila, 196
Keascker, Edward Keith, 122, 217
Kell, Jean, 199
Kelley, Gerald, 207
Kelly, Barbara, 196
Kelly, Joyce, 175, 187
Kelly, Carol Ann, 191
Kemmerich, Barbara, 127, 128, 191
Kenyon, Catherine, 175, 187
Kerby, Robert Eugene, 63, 213
Kevens, S., 207
Kibbey, Sarah Louise, 178, 189
Kieck, Jack, 183, 215
Killefer, Earl, 74
Kimble, Doris, 110, 122, 189
King, Lyle, 60, 65, 127, 217
Kirby, Joyce, 189
Kirtland, Diane, 132, 196
Kipp, Thelma, 132, 196
Kindworth, Ann, 132, 193, 196
Kindworth, Joan, 144, 193
Knoll, Joyce, 193, 196
Koch, Alyce, 132, 180, 191
Koppen, Joy, 187, 191
Koo, Byung Choll, 121, 217
Kostensbader, Betty, 175, 196
Koupal, Patricia, 199
Koutny, Dolores, 132, 180, 191
Kraus, Harry, 122, 217
Kraus, Robert, F., 217
Krylnykowski, Genowefa, 178, 180, 199
Kubel, Goldwyn, 122, 196
Kuhlman, Betty Jane, 94, 122, 131, 217

Kukahiko, William, 64
Kyle, Jean Arden, 164, 196

L
Lacey, James, 130, 206
Lefky, Elton, 215
Lambert, Donna, 181, 193
Lambert, Richard, 217
Lang, William, 206
Lange, William, 207
Langley, Barbara, 132, 189
LANGUAGES, 101
Larimer, Marjorie, 217
Larkin, Joseph, 217
Larsen, Jack, 215
Larsen, Patricia, 132, 179, 196
LAUSANNE HALL, 194
LAW, 97
Lawrence, Harold, 122, 129, 206
Lawrence, Keith, 164, 181, 207, 209
Lawrence, Kent, 164, 181, 207, 209
Lawrence, Stanley, 63, 213
Lawson, Nancy, 132, 149, 189, 196
Lawson, Norman, 64, 198, 211
Lednickey, John, 217
Lee, Mary Louise, 128, 154, 155, 199
Lee, Bettyella, 122, 217
Lent, Berkeley, 122, 217
Lenz, Gordon, 73
Leonard, Elizabeth, 122, 193
Lesick, William, 217
Leslie, Anne, 193

LETTERMAN'S CLUB, 172

Lettiken, Marjorie, 199
Liatte, William, 217
LIBRARY SCIENCE, 114
Lien, Audrey, 122, 171, 191
Lilles, Anamylia, 132, 196, 199
Lindemood, Rex, 122, 133, 206
Lockman, Frank, 133, 164, 215
Lofter, Theodore, 66, 67, 69, 127, 173, 176
Logue, Douglas, 67, 69, 173, 207
Long, Patricia, 177, 193
Lorenz, Howard, 112, 116, 129, 173, 213
Loter, Ray, 114, 122, 129, 133, 163, 173, 179
Louthan, James, 217
Loveless, Eleanor, 177, 179, 189
Luckner, John, 199
Lumiarivue, Mary, 189
Lund, Bert, 73, 155, 215

M

MacDougall, William, 63, 127, 128, 154, 213
MacGregor, Alan, 211
McAfee, Betty, 207
McAllister, Glenn, 155, 158, 191
McBride, Don, 207
McCain, Doris, 127, 128, 131, 169, 191
McCain, Chord, 132, 187, 193
McCulloch, Gloria, 179, 196
McCulloch, Doris, 132, 191, 196
McCarty, Jack, 60, 64, 173, 207
McClanahan, Marques, 127, 164, 187
McCoy, Leonard, 217
McCoy, Raymond Duncan, 74, 122, 129, 173, 215
McDermott, Margaret, 196, 199
McDougall, Herbert, 217
McDougliff, Jeff, 211
McElhinney, Sue, 193
McHale, James, 63, 213
McLauchlan, Mary, 189, 196
McLeod, Douglas, 86
McMasters, Donald, 75, 122, 217
McMullen, Elizabeth Guttridge, 63
McMullen, Albert R., 63, 112, 129
McMullen, Robert, 63, 116, 122, 173, 179, 203
Mancy, John, 217
Mader, Howard, 178, 215
Magill, Jerry, 207, 213
Maggi, Barbara, 130, 218
Mallory, Gordon, 63, 213
Mallory, Robert Dene, 215
Malton, John, 64, 73, 147
Marks, Nancy, 83, 164, 181, 193, 196
Marcks, Charles, 206
Marion, Evelyn, 132, 187
Martin, John, 129, 130, 217
Martine-Lally, Luis A., 122, 217
Marandee, Richard, 217
Mary, Charles, 64, 217
Mason, Isabel, 218
Massey, Charles, 64, 173, 215

MATH, 108
Matheny, John B., 218
Mattie, George, 69, 71, 73, 147
Matter, Caroline, 164, 218
Maudlin, Howard, 128, 157, 161, 215
Meara, Dona, 132, 180, 196, 199
Meeker, Eleanor, 189, 196
Meinke, Harold, 211
Meir, Joseph Paul, 122, 218
Meier, Sue, 103, 128, 133, 199
Menolaasca, Bianca, 187
Merriam, William, 127, 128, 176, 179, 211
Mertz, Theodore, 76, 86, 87, 173, 209
Merr, Marilyn, 196
Meuser, Wayne, 127
Middleton, Calvin, 122, 206
Miles, Albert, 63, 78, 173, 213
Miller, Albert, 108, 122, 176, 218
Miller, Alan, 176, 218
Miller, Alice, 127, 175, 196
Miller, Barbara Lee, 131, 178, 191
Miller, James Barr, 156, 167, 178, 211
Miller, John W., 218
Miller, Lawrence, 218
Miller, Lowell, 123, 178, 179, 218
Miller, Robert, 123, 148, 207, 215
Miller, R. Lauren, 218
Miller, Robert S., 218
Minsler, C. T., 218
Minn, Albert, 64, 173, 179
Mintonye, JoAnne, 132, 191, 196

Mitteldorf, Rod, 207, 217
Moffitt, Sally, 193, 196
Montag, Dan, 69, 215
Montague, Ellen, 123, 154, 193
Monteth, Loree, 218
Moodie, Neil, 81, 207
Moody, Beverly, 132, 187, 193
Moore, Jeanne, 189, 206
Moore, Richard, 218
Moore, William John, 176, 179, 206
Morris, David, 60, 218
Morley, Elizabeth, 199
Motschenbacher, Elliot, 86, 129, 130, 131, 141, 181
Mountcastle, Elizabeth, 196
Muckle, Maxine, 99, 123, 199
Mueh, Charles, 64
Mullin, Betty Jean, 196
MU EPSILON DELTA, 130
Musie, Wiley, 218
Mulkey, Edward Warren, 63, 213, 218
Mumpower, G., 218
MU PHI EPSILON, 131
Murray, Bernard, 211
Murray, Terry, 215

MUSIC, 93
Myers, Ray, 74
Myers, Sue, 83

N

Nag, Beatrice, 123, 131, 199
Neal, James, 218
Neal, Charles, 64
Nelson, Fabian, 63, 115, 123
Nelson, Hugh, 44, 63, 213
Newhouse, Isabelle, 196
NEWMAN CLUB, 180
Newton, Laura Lee, 132
Nichols, Bernard, 123, 215
Nickay, Stephen, 207
Nicoll, Douglas, 128, 176, 207
Nieswander, Paul, 87, 211
Nishikawa, Ethel, 196
Noa, Elizabeth, 196
Noochster, Donald, 123, 218
Norby, Helen, 196
Nordhills, Claude, 63, 69, 71, 73, 213
Nordyke, Ed, 218
Norwood, Cleora, 196
Nosaka, Elliott, 206
Norvell, John, 63, 213
Nusom, Dale, 207
Nunn, Eva, 187

O

Oakes, Eleanor, 196
Oakes, Helen, 199
Obert, Elwood, 218
O'Dell, Larry, 138, 146, 173, 211
Odgers, George, 206
Odle, Robert, 78, 218
Ogle, Sally, 193
Older, Patsy, 146, 193
Olds, Douglas, 196
Oliver, Gilbert, 129, 130, 209
Oliver, Joanne, 128, 177, 199
Olson, Barbara, 123, 175, 196
Olson, William, 218
Olson, Allan, 218
Olson, Robert, 187
O'Mara, Albert, 218
O'Neill, Robert, 95, 123, 215

ORCHESTRA, 165
Osborn, Beverly, 193
Osborn, E. T., 123, 178, 215
Osborn, James, 176, 218
Osuna, Ray, 69

OXFORD CLUB

P

Paddock, Pat, 207
Palmer, Donna, 193, 196
Pambrun, Marcella, 218
Parker, Patricia, 187
PANHELLENIC COUNCIL, 182
Pappert, Camille, 218
Parke, Lyle, 123, 174, 218
Parker, Jodelle, 127, 131, 218
Parsons, Patricia, 123, 123, 158, 193
Parton, David, 207, 218
Patterson, Charles, 64, 124, 129, 130, 196
Patterson, James, 123, 133
Patterson, Ruth, 131, 196
Patterson, William, 124, 173
Payne, Howard, 207
Pearson, Ray, 63, 155, 215
Pederson, Robert, 75, 218

INDEX

PEPCATS, 132

Perkins, Esther, 218
Perlman, David, 71, 73, 207
Person, Catherine, 132, 199, 181
Peters, Herman, 176, 207
Peterson, Virginia, 189, 196
Peyton, Gene, 63, 173, 213
Peyton, William, 209

PHI DELTA PHI, 135

PHI DELTA THETA, 210
PHI ETA SIGMA, 127
PHI DELTA, 87, 211
Phillips, Geneva, 218
Phillips, James, 174, 218
Phillips, Mary, 44, 132, 189, 193
Phillips, Mary Jane, 44, 193, 196
Phillips, Nancy, 158, 177, 193

PHILOSOPHY, 113

PHILOSOPHY CLUB, 174

Phippis, James, 213
Phippis, Philip, 63
PHI ZETA CHRISTO, 181
PHYSICAL EDUCATION, 115

PHYSICS, 107

PI BETA PHI, 198

Pickell, Richard, 124
Pierce, Jack, 171, 174, 179, 218
Pinkerton, Jane, 189, 196
Piper, John, 160, 211
Pitner, Sam, 124, 215
Place, David, 37, 133, 211
Poindexter, David, 206
Pointer, Ramon, 73

POLITICAL SCIENCE, 105

Pollack, Polly, 34, 56, 57, 124, 193
Pomeroy, Cleo, 124, 218
Porter, George, 44, 77, 181, 207, 215
Pospisil, Leopold, 171, 218
Pospisil, Zoena, 124, 171
Potter, Ervin, 218
Potter, Norman, 218

Powell, Margaret, 131, 144, 189
Pratt, Gordon, 63, 117, 124
Prediletto, Louis, 146, 211
Price, Ruth, 191, 196
Prims, Edward, 124, 218
Pritchett, Donald, 63, 155, 213
Proctor, Diane, 159, 199
Puckett, Maria, 193

PSYCHOLOGY, 111

PSYCHOLOGY CLUB, 174

PUBLICATIONS BOARD, 153

Q

Quamme, Marjorie, 124, 218
Quamme, Marilyn, 99, 218
Quinn, David, 206

R

Radliff, Duane, 131
Ragland, James, 178
RALLY SQUAD, 143
Randa, Beverly, 132, 196, 199
Ratcliff, Mary Lou, 132, 189, 196
Ranton, Loren, 57, 211
Redenbaugh, Barbara, 181, 196
Reed, Edward, 124
Reed, Leo, 130
Reher, Edith, 175, 196
Rehfeld, Lawrence, 102, 124, 218
Reimann, Richard, 218

RELIGION, 113

Revis, Kathleen, 175, 180, 196
Reynolds, Dale, 155, 206

Reynolds, Ellen, 189
Reynolds, Frank, 84
Rhoads, Robert, 63, 129, 142, 171
Rich, Jeanne, 131, 193
Richardson, JoAnne, 96, 199
Richter, Walter, 44, 64, 207
Riebe, Frank, 63, 213
Ringle, Gordon, 63, 124, 213
Ringle, Phillip, 215
Rittenhouse, Earl, 124, 196
Roberts, Avis, 124, 174, 199
Roberts, Muriel, 132, 196
Robertson, Joyce, 196, 199
Robertson, Robert, 124, 218
Robins, Robert, 63, 179, 213
Robinson, Charles, 66, 67, 69, 215
Robson, Gerald, 124
Rogers, Janet, 196, 199
Rogers, Patricia, 218
Rohn, Eloise, 189, 196
Rose, Wayne, 124, 215
Ross, Cherie, 218
Ross, William, 215
Roth, Irwin, 73
Rowland, M. June, 218
Ruff, Richard, 64, 80, 149, 215
Richard, Paul, 218
Rush, Shirley Ann, 87
Ryan, Patricia, 145, 189
Rynal, Donald, 176, 211

S

Saabey, Delia, 127, 193
Sanders, Robert E., 63, 213
Sawyer, Loren, 211
Sayre, Marian Jean, 218
Scarborough, Don, 207, 218
Scheidt, Thomas, 133, 149, 164, 215
Schmidt, Warren, 124, 130
Schodde, Colleen, 132, 133, 199
Schuerman, Sheila, 187
Scott, Robert, 103
Schrader, Paul, 63, 213
Scrivens, Louis, 65, 69, 73
Sebastian, Patricia, 125, 174, 218

SENIORS, 116

Shangle, Robert, 63, 173, 213
Shangle, Verne, 206
Shannon, Roger, 124, 206
Shaw, Phillip, 74, 174, 207
Shelton, Roy L., 125, 218
Shepherd, Jean, 132, 193
Sherman, Barbee, 196
Shipley, Loretta Jean, 191, 196
Shipley, Suzanne, 173, 181, 196
Shloeth, H. A., 63
Short, Maris, 196
Showacy, LaFyrne, 111, 125, 129, 174, 186, 191
SIGMA ALPHA CHI, 128
SIGMA ALPHA EPSILON, 212
SIGMA CHI, 214
SIGMA DELTA PI, 131

Simons, Gay, 196
Simonson, Arne, 207, 218
Simpton, Betty Jean, 199
Simpson, Edithanne, 218
Simpton, Margaret, 125
Sims, William, 125, 219
Skimas, John, 63, 64, 73, 213

SKI CLUB, 171

SKING, 78

Sklarvin, Robert, 129, 145, 211
Slanchick, John, 64
Slocum, Julius, 219
Smedley, Norvada, 131, 191
Smith, Julian, 60
Smith, Paul, 125, 206
Smith, Robert Eugene, 218
Smith, Robert F., 176, 207, 215
Smyar, Carolann, 186, 199
Snyder, Wallace, 215

SOCIAL ACTIVITIES

BOARD, 152

SOCIOLOGY, 104

SOPHOMORES, 146
Sorenson, Glen, 125
Southard, Wallace, 101, 125, 155, 219
Southworth, Paul, 155, 215
Spangler, James, 206
Sparr, Marion, 178, 191
Sparks, Marian, 37, 131, 133, 181, 193

SPEECH, 114

Spehrink, Dolores, 128, 132, 177, 189
Spencer, Gloria, 199
Sperry, Keith, 61, 63, 64
Stackhouse, Ann, 191, 196
Stanton, Patricia, 127, 128, 177, 193
Stanton, Ward, 63, 213
Solze, Robert, 125, 218
Stark, Janet, 159, 177
Stark, Kay, 199
Stauffer, Wesley, 173, 176, 206
Stearns, Douglas, 209
Stephens, Cole, 78, 125, 211
Stevens, Mary, 127, 196
Stephens, Walter, 207
Stevens, Glenn, 125
Stewart, Jean, 44, 189, 196
Stocker, Paul, 125, 219
Stocks, Larry, 73, 87, 125, 129, 173, 211

Stoehr, Phillip, 206
Stoddard, Donna, 193
Stone, Gloria, 125, 133, 193
Stone, Norman, 125, 215
Stout, Mary, 219
Stratton, Richard, 218
Straumfjord, Allen, 125, 209
Stults, Robert, 218

STUDENT HANDBOOK, 158

Suba, Thomas, 219
Summers, Harry, 211
Sutter, Kenneth, 219
Sutch, Rado, 63, 219
Swan, Doeland, 219
Swanson, Anne, 177, 193
Symons, Ronald, 207

T

Takayama, Helen, 219
TAU KAPPA ALPHA, 133
Taylor, Evelyn, 125, 131, 178, 191
Taylor, Joyce, 191, 196
Taylor, Robert, 64, 211
TENNIS, 74

THETA ALPHA PHI, 133

Thomas, Joanne, 219
Thomas, Mary, 191
Thorn, Jerry, 125, 174, 219
Turman, Walter, 219
Turman, Robert, 219
Thurston, Maria, 196
Tillotson, Delbert, 125, 130, 211
Todd, Roger, 125, 219
Tolle, David, 63, 126, 213
Tomlinson, George, 126, 219

TOWN STUDENTS, 216

TRACK, 76
Tribble, Beverly, 193, 196
Tripp, Russell, 105, 126, 129, 130, 137, 178, 209
Tsubaki, Taneko, 196
Turner, Patricia, 175, 219

U

Ulrich, Robert, 63, 213
Ulvin, Henry, 219
Underwood, Maury, 15
UNESCO, 179
UNIVERSITY WORKSHOP, 163
Unruh, Richard, 47, 74, 211

V

Vanderwal, John, 219
Vanderwal, George, 206
Vincent, Marlene, 193, 196
Visper, Ernestine, 178, 189

W

W. A. A., 175
Wadsworth, Beverly, 126, 175
Wagner, George, 206
Wagner, Irving, 126
Wagness, Marjorie, 196
Walker, Desmond, 70, 73, 173, 211
Walker, Gladys, 196
Walker, Tillie, 196
Wallace, Charles, 155
Wallace, Lorna, 196
Wallis, Elaine, 219

WALLULAH, 156

Walser, Doris, 52, 55, 95, 126, 193
Walt, Theodore, 126, 219
Wardin, Albert, 126, 219
Wann, Thomas, 126, 219
Warren, Robert, 64, 173, 219
Wasburn, Frank, 49, 104, 126, 129, 176, 181, 209
Webber, Betty Jean, 196, 199, 219
Weese, Lowell, 63, 173, 213
Wei, D. Wallace, 219
Weinstein, Esther, 219
Weisser, Jack, 211
Welch, William, 219
WESLEY FELLOWSHIP, 182

WESTMINSTER FELLOWSHIP, 181

Whaley, Marilyn, 148, 196
Wheeler, Edith, 196
White, Robert, 63, 64, 73, 126, 173, 181

WIGGINTON, MARY JO, 199

Wilcox, Allen, 157
Wilcox, M. James, 207
Wilcox, Mary, 126, 171, 174
Wilhelm, Alice, 132, 189
Wilhelm, Inis, 126, 129, 186, 193
Whitost, Rose, 127, 128, 193
Williams, Robert B., 206
Wilson, Betty Jean, 191
Wilson, Frances, 187, 219
Wilson, James, 219
Wilson, Jack, 215
Wilson, Henry Allen, 63, 140, 213
Wilson, Lenore, 126, 191
Wilson, Robert, D., 215
Wilson, Virginia, 146, 193
Winship, Frank, 207
Wiper, Robert, 209
Witsman, Robert, 133, 147, 215
Wittenberg, William, 75, 207
Wolf, Jeanette, 178, 191
Wood, Dorothy, 37, 126, 133
Wood, James, 63, 164, 213
Wood, Merritt, 219
Woodard, Wesley, 177, 191

Y

Yates, Thomas, 203
YMCA, 202
Yocum, Richard, 203
Younglove, Norton, 86, 87, 145, 209
YOUNG REPUBLICANS, 178
Yung, Edward, 219
Yunker, Donald, 215
Yusha, Alexander, 219
YWCA, 177

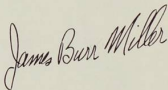
Z

Zahar, Patricia, 131, 158, 191
Zink, Russell, 127
Zozel, Patricia, 219

-AN OPEN LETTER TO THE STUDENTS AND GRADS OF WILLAMETTE UNIVERSITY-

This advertising section is representative of the businessmen and merchants of Salem and Portland who are behind Willamette University 100%. Each firm listed in this section extends an open-arm backing of your college, your desires and your interests. After scouring this vicinity for the last six months for supporters of the 1950 Wallulah these were the businesses who extended the welcome hand of collegiate interest in wholehearted, forthright, sincere and conscientious support of our college.

It is with heartfelt appreciation that I close this 1950 Wallulah in expressing my gratitude to these merchants and urging you to patronize these businesses to show them that we, in turn, recognize them as collegiate supporters.

A handwritten signature in cursive script that reads "James Burr Miller". The signature is written in dark ink and is positioned to the right of the typed name.

James Burr Miller
Business Manager
1950 Wallulah



NANCY MARKS

JANYCE BAKER

NORMA DREWS

Miller's
SALEM, OREGON

White Stag
**4-SEASONS
SLACKS**
100% Wool Gabardine

A whole Fun Wardrobe

Photo on Preceding Page Shows . . .

THREE WILLAMETTE GIRLS wearing

White Stag **FUN WARDROBE**

MISS NANCY MARKS wears or models the White Stag "long shorts" of solid color denim. Priced at \$3.95. Her tee-shirt is made of fine white cotton jersey with striped vestee.

MISS JANYCE BAKER models solid color "Deck Trou" Rope belt, novelty white stitch on blue, yellow and rose. Price \$4.95. Her jacket the "Covertop" is made of rope pattern denim. May be worn in or out. Priced \$4.50.

MISS NORMA DREWS models the "Boatshirt" of rope pattern denim priced at \$5.50 with "Clamdiggers" to be rolled above or below the knee. Priced \$4.50. Crew hat \$1.95.




Miller's Sportswear

. . . Fashion Floor

Agents for JANTZEN SWIM SUITS,

KORET and WHITE STAG SPORTSWEAR



F. O. Repine Co.

Dutch Boy Paints
2585 PORTLAND ROAD
SALEM, OREGON

Edward Williams

330 Court Street — Salem, Oregon
Home of Hallmark Cards

Valley Motor Co.

FORD CARS and TRUCKS
Center and Liberty Streets
Salem, Oregon

Gifts at

MARGWEN'S

Capitol Shopping Center
and THE MODERNE—305 Court Street

JOHNSON'S

STORE FOR LADIES
Salem, Oregon

BUSINESS MACHINES

ROEN

456 COURT STREET

Merrill D. Ohling

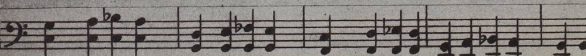
INSURANCE

Telephone 2-4129 250 North High
Salem, Oregon

Howard Corset Shop

FOUNDATION GARMENTS

Special Attention Given to Fittings
Hosiery—Lingerie—Dresses—Smocks
131 North High St. Phone 3-4032





THE MAN'S SHOP

*The Store of Style, Quality and Value
for the University Man*

416 State Street Salem, Oregon

TOP HAT RESTAURANT

1275 State Street
Bill Coon Phone 2-9249

TOP HAT ICE CREAM STORE

"30 Flavors of Ice Cream"

Emery Lehold

Dr. E. E. Boring Dr. Sam K. Hughes
Optometrists at

BORING OPTICAL

1194 CENTER STREET Phone 3-6506

"Three blocks north of campus off 12th Street"

PADE'S

GROCERY AND MARKET

Delivery Service

1244 State Street Phone 3-9135



DELIVERY
Phone 3-5730

EOLA ACRES FLORIST

MRS. B. O. SCHUCKING

Salem-Dallas Hiway Salem, Oregon

WESTERN AUTO SUPPLY CO.

AUTO ACCESSORIES
CORONADO APPLIANCES
TIRES LUBES BATTERIES

201 North Commercial Street
Salem, Oregon Phone 3-7177

Holland Bakery & Fountain

Home Made Bakery Goods
Fountain Service

Danish Pastry
Cakes — Pie — Doughnuts


110 North Commercial Street Salem 3-3454

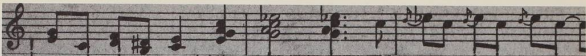
BARB'S SPORTING GOODS

WILLAMETTE JACKETS
TENNIS and GOLF EQUIPMENT

*"Get in Line with Barb's
for your Sports Needs"*

175 South High Street Dial 3-4555





Scellers, Foley & Rising, Inc.

"A Progressive Insurance Office"

Let us keep your insurance in harmony

143 South Liberty Street Salem, Oregon
Phone 2-4143

Ladd & Bush—Salem Branch

UNITED STATES NATIONAL BANK
OF PORTLAND

SALEM, OREGON

. . . All Marine Accessories

Canoes For Rent
Boats - Motors
Speed Boat Rides

SALEM BOAT HOUSE

Phone 3-9303 100 Chemeketa Street

Meier & Frank Co.
EST. 1852
PORTLAND'S OWN STORE

SUNSHINE DAIRY

*Portland's Finest Independently Owned
Dairy*

881 N.E. 21st Avenue Portland 12, Oregon

THE UPTOWN DRIVE-IN

850 NORTH HIGH STREET
SALEM, OREGON

"Taste the Difference"

KUHN'S SHOE REPAIRING

"WE REBUILD 'EM"

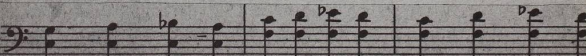
Workmanship and Materials
of the Finest Quality

464 Court Street Phone 3-9576

CAPITAL DRUG STORE

QUALITY ALWAYS WINS

405 State at Liberty





KAY'S

*Distinctive Fashions
for Women*

460 State Street Salem, Oregon

JAYSON'S

Your Sportswear Headquarters
Salem, Oregon

"SMART CLOTHES FOR SMART MEN"

BURRIGHT'S

UNIVERSITY CLEANERS

Save with Cash and Carry

We Specialize in Formals

Two Blocks West of Campus on Ferry Street

MAYFLOWER MILK

2135 FAIRGROUND ROAD

Salem

Phone 3-9205



Fresh as Your Morning Coffee . . .

THE OREGON STATESMAN

Salem's Morning Daily

Now in its Centennial Year

Needham's

STATIONERY
OFFICE SUPPLIES
465 STATE ST SALEM, ORE

BISHOP'S

STYLE CENTER FOR
MEN AND BOYS

Salem, Oregon



HOTEL SENATOR

SALEM, OREGON

Salem's New and Most Modern Hotel
Coffee Shop and Dining Room
Banquet and Meeting Rooms
Garage in Building

W. W. Chadwick, President

ROBERTS BROS.

177 NORTH LIBERTY STREET

SALEM, OREGON

"We Give and Redeem S&H Green Stamps"

COMPLETE HOME FURNISHINGS

R. L. ELFSTROM CO.

340 Court Street

Salem, Oregon

Jackson Jewelers

Diamonds, Watches and Silverware

WED-LOK

Rings by Granet

ART CARVED

Rings by Wood

HOLLY JACKSON

225 North Liberty Street

SALEM

Salem Laundry Co.

(WEIDER'S)

LAUNDRY—DRY CLEANING

Phone 3-9125

263 South High

STATE FINANCE CO.

153 SO. HIGH ST.

AUTO

PERSONAL

Real Estate Loans

Lic S216—M222



Peacock Cleaners



Salem, Oregon

... WHEN YOU BUY IT AT PENNEY'S
IT'S RIGHT

In Price

In Quality

In Style

Shop at PENNEY'S



FLOWERS

"FROSTY" OLSON

"Salem's Bearcat Florist"

Center and High Streets

Phone 3-7166

ENJOY OIL HEAT
HOME FUEL OIL CO.

AL LOUCKS

1710 North Commercial Street

Phone 2-4119

Salem, Oregon

. . . compliments

S. H. KRESS and CO.

5-10-25c Store

BERG'S

"Salem's Complete Food Center"

Located in the

CAPITOL SHOPPING CENTER

The best place to buy
The Best Candy

GAY'S CANDY

135 North High

Phone 2-9235

. . . Flowers from

BREITHAUP'T'S

Phone 3-9179

447 COURT STREET

Paul and Helen Heath, Owners Salem, Oregon

POMEROY & KEENE

COMPLETE JEWELRY AND
OPTICAL SERVICE


379-383 State Street

Salem, Oregon

RAMAGE'S

810 NORTH LIBERTY

. . . Telephone 3-8751



- ARROW Shirts
- Interwoven Socks
- Lord Jeff Sweaters

ALEX JONES

121 N. High St.

First with Insured Savings

Current Dividend 2½%

FIRST FEDERAL SAVINGS

142 S. Liberty Street
Salem, Oregon

Your Studebaker
Dealer

Russ Bonesteel

370 North Church
Salem, Oregon

Wills Music Store

COMPLETE MUSIC CENTER

Records Pianos Sheet Music
Band Instruments Repairs
Organs Sewing Machines

Phone 3-4959
432 State Street Salem

Senator Camera and Radio Shop

(Louis du Buy)

CAMERAS, PHOTO SUPPLIES
PUBLIC ADDRESS SYSTEMS
RADIOS, RECORDING EQUIPMENT

234 N. High St.

Salem

W. L. ANDERSON, INC.

DeSOTO PLYMOUTH

Sales and Service

360 Marion

Phone 3-7703

MARION MOTORS

"World's Most Modern Car"

NASH AIRFLYTE

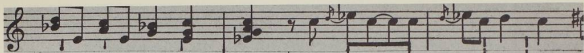
Salem, Oregon

Jay Morris Florist

"Say It With Flowers"

3790 Liberty Road
Same Location for 20 Years

Phone 3-8637



DWYER'S LODGE

"The Friendliest Place in Town"

to
DINE and DANCE

3725 Portland Road Phone 3-3042

STATE MOTORS INC.

PACKARD

"Ultramatic Drive"

340 North High Salem, Oregon

MASTER BREAD

POPULAR . . . BECAUSE IT'S GOOD

PRINTING

UNRUH-KNAPP

ADVERTISING

Phone 3-3522 Pioneer Trust Bldg. Salem

KOCO

PADE'S

COFFEE SHOP

1241 State Salem, Oregon

STOP AND SHOP at THE LITTLE FRENCH SHOP

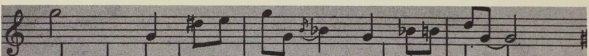
115 North High
Just across from the Courthouse
Salem, Oregon

McEWAN'S PHOTO SHOPS

435 State Street Salem Phone 3-5470
209 Oak Street Silverton Phone 2251

"The Best in Everything from Portraits
to Photo Supplies"





SCHREDER FOUR STAR MARKET

Satisfaction Guaranteed

GROCERIES MEATS

FRUITS VEGETABLES

State and Commercial Streets

Salem Branch

THE FIRST NATIONAL BANK

of Portland

Member

Federal Deposit Insurance Corporation

Your War Surplus Store

CASCADE MERCANTILE CO.

"EVERYTHING IN WAR SURPLUS"

Corner Fairgrounds Road and Church St.

METROPOLITAN STORES, INC.

"The Store of Better Values"

Every Need for the Entire Family

136 North Commercial Street

... Salem's

RECORD AND RADIO

Headquarters

HEIDER'S

meet your friends at the

KAMPUS KAFE

*Home of the Famous
Bearcat Bundle*

309 South Winter

Ph. 2-9295

See your local sport specialists for
the most complete stock of quality
sporting goods

Howard Maple Sporting Goods

Owned and Operated by Howard Wickland

372 State St.

Salem, Ore.

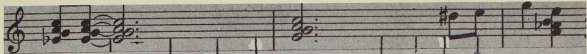
J. B. DRIVE-IN

"A Meal in Your Car"

2230 Fairgrounds Road, Salem, Oregon

Ph. 2-6492





ROHLAND'S

(In Hollywood)

*Ladies' and Children's Wear
Household Supplies"
Gifts and Art*

1981-1983 North Capitol St.
Salem, Oregon Ph. 3-7672

VALLEY PACKING COMPANY

Cascade Brand

U. S. Inspected Meat
Salem

ABBOTT, KERNS & BELL CO.

Printers : Lithographers : Bookbinders

Experienced Help for all Types
of School and College Publications

328 N.W. Ninth Ave. Portland 9, Ore.
Broadway 1101

Henry's
Things PHOTO graphic

469 STATE STREET
SALEM, OREGON

CAPITOL DRUG STORE

Quality Always Wins

405 State at Liberty

Ken and Jack Muller
Your Hosts at

CHUCK'S STEAK HOUSE

*For Your Dining and Dancing Pleasure
Private Parties Our Specialty*

3190 Portland Road Salem, Ore.

Ph. 8-7830

KENNEL-ELLIS STUDIOS

Artist Photographers

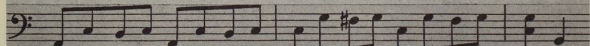
420 Oregon Building Salem, Oregon
"Artist-Photographers 1950 Wallulah"

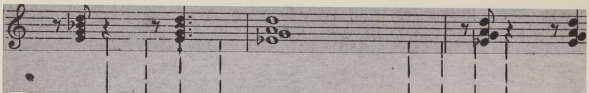
Here Comes Curly!

"Home of Homogenized Milk"

Fairgrounds Road at Hood Street
Salem, Oregon

Hans (Curly) Hofstetter, Mgr. Ph. 3-8783





Salem's Unique Dining Club

SHATTUC'S CHATEAU

Salem, Oregon

... Compliments

WHITE'S

LUNCH AND DRIVE-IN

SEARS, ROEBUCK AND CO.

The Friendliest Store in Town

550 North Capitol Phone 3-9191

A Guide to:

Seamster's Insured Cleaners

CASH AND CARRY PRICES

THREE LOCATIONS:

225 No. High	Ph. 3-6939
1725 Center	Ph. 2-4457
649 Center	Ph. 3-3222

Oak Barbecue Pit

Specializing in

Ham, Beef, Pork, Spare Ribs & Steaks

Open from 11 AM to 1 AM

159 South High Street
Across from Elsinore Theatre

McMILLAN'S Fountain-Lunch

1949 State

"Mac's" — for those

* Afternoon Snacks

* Coke Dates

* After-Dance Refreshments

Pianos, Organs
Band and Orchestra Instruments
Expert Repairing

JAQUITH MUSIC CO.

846 Cascade Drive Ph. 3-4641

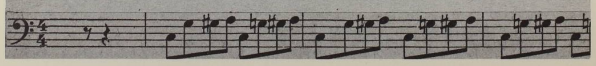
HOTEL MARION


Salem, Oregon

*Most Modern 124-Room Hotel
in the West*

COFFEE SHOP

Banquet Rooms :: Cocktail Lounge
G. Clerico, Gen. Mgr.





General Finance Corporation

A Complete Loan and Insurance
Service for Your Every Need—

Jas. B. Haley, Mgr. Mel C. Borveut, Asst. Mgr.
136 So. Commercial St. Salem, Oregon
Phone 3-9141 License S-138 and M-338

SALEM HARDWARE CO.

"The Friendly Store"

Hardware, Tools and Cutlery
Paints, Oil, Varnishes, Dinnerware,
Sporting Goods

120 North Commercial
Salem, Oregon

Phone 3-4906

CAPITAL VARIETY STORE

1262 STATE STREET
SALEM, OREGON

Rust Craft Greeting Cards

**STATE STREET
MARKET**

Emmett Kleinke

Fresh Fruits and Vegetables

Groceries and Bakery Goods Quality Meats
1238 State Street Phone 3-9127

**DOOLITTLE
MASTER SERVICE STATIONS**

Two Locations
CENTER and COMMERCIAL
COURT and CAPITAL

Goodyear Tires, Batteries; Recapping
Convenient Budget Terms

PIONEER TRUST COMPANY

SALEM, OREGON

Trust Services for the Greater
Willamette Valley

Hamilton Furniture Company

Since 1894

230 Chemeketa Street
Salem, Oregon

MITCHELL'S

"Your Service Dealer"

Radios, Repairing, Appliances

1880 State Street



THIS BOOK DOES
NOT LEAVE
THE LIBRARY

WILLAMETTE UNIVERSITY 1950

SALEM, OREGON