

Rook Bible



Willamette

University

1948 ~ 1949

Student Handbook

AND

Book Bible

Volume 55

1948-1949

LA FYRNE SHOWACY

Editor

Annual Publication
ASSOCIATED STUDENTS
OF
WILLAMETTE UNIVERSITY

TABLE OF CONTENTS

SEC. I. ROOK INFORMATION	Page
Old Historic Temple	IV
University Calendar	3
Traditions	4
Rook Dictionary	7
Rook Rules	8
Publications	9
A.S.W.U.	10
SEC. II. ADMINISTRATION	
Student Body	15
University Administration	18
Map of W.U. Campus	24
SEC. III. ORGANIZATIONS	26
SEC. IV. LIVING ORGANIZATIONS	
Fraternities	36
Regulations—Women	37
Independent Organization	40
Regulations—Men	40
SEC. V. ATHLETICS	
Meet the Coaches	47
1948 Football Schedule	48
Varsity Yells and Songs	50
SEC. VI. A.S.W.U. CONSTITUTION	56

UNIVERSITY DIRECTORY

ASWU-Collegian-Wallulah	3-3088
Alpha Chi Omega	2-5522
Baxter Hall	2-9332
Beta Theta Pi	2-4577
Chi Omega	3-6417
Delta Gamma	3-8730
Frederickson Hall	2-9382
General Manager, ASWU	3-3830
Lausanne Hall	3-9268
Phi Alpha	2-4524
Phi Delta Theta	3-6588
Pi Beta Phi	3-8760
Sigma Chi	2-4474
University Tel. Exchange	3-9266

Eaton Hall

Gymnasium

Health Office

Library

Science Hall

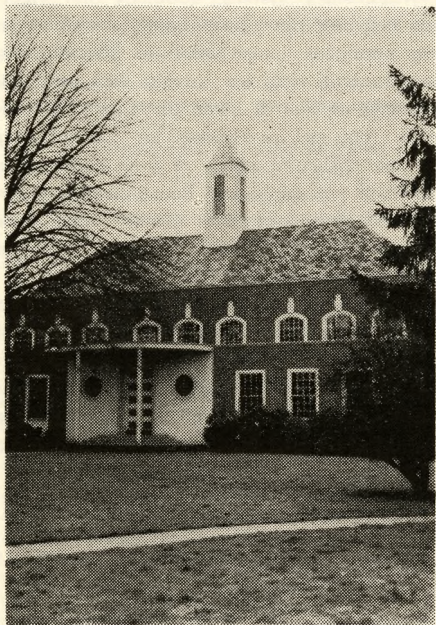
Infirmary

OLD HISTORIC TEMPLE

(University Hymn)

There's an old Historic Temple
Rising grandly through the years
Where the oaken-hearted fathers
Drew their strength for strong careers.
Down the years its portals open,
Gather wise ones to its fold;
Breathes the spirit of the Westland,
Card'nal emblem 'bossed with gold.
Spirit of the Golden Westland,
Breathing through our fathers tears;
Tells the story of the Temple,
Bids us hope adown the years.
Sing, oh sing, of old Willamette,
Sing while hearts are young and true;
Sea to sea the chorus swelling,
Dear old school, our W.U.

Kook Information



WELCOME TO WILLAMETTE

Willamette's friendly traditions and vigorous activities have been briefly presented in this handbook in an effort to acquaint the new students with our campus. We want the freshmen to feel at home as quickly as possible. This can be achieved by concentrating on one particular phase of your college life in which you can excel. Recognition of genuine and sincere effort is quickly made here and reward lies in the fact that your presence is needed and appreciated.

We who have preceded you at Willamette are anxious to help you take advantage of the opportunities offered. By acquainting yourself with the information on these pages you will help not only yourself, but also the "W" club members who are eager to enforce W.U. traditions.

The Editor.

UNIVERSITY CALENDAR

The academic year is divided into two semesters of eighteen weeks each. University events occurring in each semester are outlined here to acquaint the student with the order of their happening.

Fall Semester

- Sept. 15-18—Registration and orientation of new students.
Sept. 20—Registration of new students.
Sept. 21—8:00 A. M., classes begin.
October 23—Annual Homecoming.
Nov. 11—Armistice Day Convocation, 10:00 A. M.
Nov. 24—Thanksgiving Recess begins 4:00 P. M.
Nov. 29—Thanksgiving Recess ends 8:00 A. M.
Dec. 18—Christmas Recess begins, 12:00 Noon.
Jan. 3—Christmas Recess ends, 8:00 A. M.
Jan. 17-22—Registration of second semester.
Feb. 5—Semester ends.

Spring Semester

- Feb. 7—Registration and orientation.
Feb. 8—Classes begin, 8:00 A. M.
April 2—Spring Recess begins, 12:00 Noon.
April 11—Spring Recess ends, 8:00 A. M.
April 15—Good Friday Convocation, 11 A. M.
May 23-28—Advance Registration for Fall 1949.
June 5—3:00 P. M. Baccalaureate Service.
June 11—Semester Ends, Alumni Day.
June 12—Commencement Exercises, 3:00 P. M.

TRADITIONS

Homecoming

Traditional Homecoming festivities, this year Oct. 23, honoring alumni of the University, begin with a leaf rake early Friday morning by the freshmen. School spirit is demonstrated by a Homecoming Sign contest and a noise parade contest among the living organizations. Saturday afternoon the annual football game with the College of Puget Sound is held. Winners of the contests are announced at the semi-formal dance Saturday evening.

Whip Whitman Banquet

The Whip Whitman Banquet is held the Thursday evening preceding the annual Whitman-Willamette football contest to create plenty of game spirit. A cup is awarded to the living organization with the most original and spirited presentations of yells and songs. Winner of this game determines which school gains possession of the axe the following year.

Freshman Glee

Freshman Glee, begun in 1912, has become one of the most popular events at Willamette, particularly attracting townspeople and alumni. The freshman class challenges the

other classes to participate in the contest which consists of the presentation of an original song, accompanied by marching. Classes this year will march to an Alma Mater theme to compete for the coveted Glee banner. An allied tradition is Blue Monday which is the day Glee bets are paid and the losers swim in the mill stream.

Victory Bell

Each Willamette athletic victory is observed by the ringing of the Victory Bell in the tower of Waller Hall proclaiming the University's score.

May Weekend

Sponsored by the Junior Class, this weekend is held primarily for the purpose of acquainting high school guests with our campus. Festivities include Inter-Sorority sing, the May Morning Breakfast sponsored by the Y.W.C.A., the annual Freshman-Sophomore Tug-of-War, Coronation of the Queen, the May Pole Dance, and a dramatic production. Sororities and Fraternities participated in the colorful May Day parade last year for the first time since 1942. Inter-Fraternity sing was another added feature last spring. Climaxing the weekend is the May Day Formal Ball.

Kangaroo Court

The "W" Club, in order to maintain strict observance of the rules and tradition of the University, holds Kangaroo Court especially for the freshman class. The first court will be held about three weeks after the opening of school this fall. At this court, rooks receive their sentences and have an opportunity to pay their debts to society.

Flunk Days

During the latter part of the school year the Juniors and Seniors plan their respective beach trips without the knowledge of the sophomores or freshmen. The upperclassmen are excused from classes on these days.

Award Day

One day is set aside during the latter part of the spring semester for the award of individual activity, scholastic, and athletic prizes. The awards are scholarships, cash prizes, and memberships in honorary organizations.

ROOK DICTIONARY

Rook—Lowest form of animal life; dullness of sensibilities, or unrestrained passion.

Sophs—The only people around school who know anything. For this reason they are entrusted with the care and instruction of the youngest inmates.

Upperclassmen—Don't mind them, they just work here.

A.S.W.U.—Those who have consciously or otherwise become members of our Willamette "family."

Fussing—Speaking to, holding hands with, or in any way acknowledging the existence of those campus decorations bravely referred to as members of the weaker sex.

Glee—The one occasion in the school year when freshmen are allowed meekly to challenge the superiority of the other three classes.

Clean-Up Day—That day when Freshmen rid the campus of trash they have deposited so that returning grads may feel at home.

"W" Men—Your main campus bosses. Obey their requests and some day you'll be promoted from the ranks of Rooks.

Rock Cap—That little piece of cardinal and gold felt that so remarkably reflects the inferiority of its wearer. Feeble Rooks wear it for protection. Caps can be purchased in the book store.

ROOK RULES

1. Freshmen are required to do ten hours of work on the campus and athletic field.
2. Freshmen girls wear cardinal and gold ribbons in their hair.
3. Freshmen boys are required to wear rook caps on the campus.
4. Freshmen DO NOT wear cords on the campus.
5. Freshmen carry Student Handbook at all times.
6. Freshmen enter and leave chapel by the front door only.
7. No one but seniors inhabits the Senior Bench.
8. Rise when the "Old Historic Temple" is sung.
9. All Freshmen attend Kangaroo Court. it is held.
10. Know the Student Body Constitution.
11. All students attend all rallies and games.
12. A SMILE AND HELLO are expected from every student at all times.
13. All students are good sports at inter-collegiate contests.
15. Each student is a member of a Christian organization.

16. Willamette has many traditions sacred to our University, and we are depending upon you to preserve and cherish them. Admission to all-school drama productions.
17. The "W" club is aiding you in complying with these rules. A wise freshmen will obey them.

PUBLICATIONS

Student Directory

Commonly known as the "Fusser's Guide," this publication provides the names, addresses, and phone numbers of students and faculty. An added feature is the Social Calendar for the fall semester. Edited by Harry Ryan.

Student Handbook

The Student Handbook or "Rook Bible" is published each year to acquaint new students, especially Freshmen, with the University, its traditions, and activities.

Willamette Collegian

The official college paper, published weekly by the student body is one of the outstanding University publications in the nation. The Collegian won recognition last year by winning its sixteenth consecutive All-American rating. Edited by Eric Bergman.

Wallulah

A pictorial record of campus life and student achievements, the yearbook published annually in June provides pleasant memories of Willamette University in later years. Staff members are given recognition upon approval of the awards committee. Edited by Geri Bowles.

Willamette Songbook

The Songbook includes outstanding college songs and grows larger as new Freshman Glee songs are added.

Publications Board

The publications board consists of the ASWU president, publications manager, Collegian and Wallulah editors, two faculty members, and the general manager and two members of ASWU. Publications budgets are subject to approval by the student council, as are budgets of all other activities.

A.S.W.U.

The Associated Students of Willamette University is the organized student body of Willamette.

Student Council

Governing body of A.S.W.U. consists of the student body officers, class representa-

tives, a representative from the Law School, Collegian Editor, General Manager, and a faculty member selected by the council.

Student Body Card

Payment of Student Body dues each semester entitles the student to the following:

Admission to all athletic events.

Admission to all-school social functions.

Admission to all school drama productions.

Admission to class social functions.

Two tickets to Freshman Glee.

Weekly edition of the Collegian.

Upon presentation of two semesters' cards, the student is entitled to the yearbook.

Class Organization

Each class has the responsibility of electing its own leaders. The Freshman class has a double responsibility, for not only must one of its members manage Freshman Glee, but its president is obligated to speak at the event. Officers of all classes are elected by nominations from the floor during class meetings.

Honor System

Beginning this semester Willamette will observe a new honor system in the classroom.

Instigated by the students, it will also be operated by the students in an effort to achieve honorable conduct during examinations and other academic work. Further details of the plan will be formulated this fall.

LIBRARY RULES

The Library is regarded as a place for quiet study and research. Conversation and group study may be carried on in the reading rooms.

Card files are available in the lobby to help you. Books are catalogued alphabetically by title, author, and book section. Book racks are also labeled to aid in efficient selection of books.

A limited number of typewriters is available in the typing room.

Several hundred books in which reading assignments are made are kept at the desk and are given to the students upon request. Each reserve book has an orange card and a red dot. Reserve books will be charged out for two hour periods and will be due on the half hour nearest the elapsed two hours since the book was checked out. Current magazines are treated as reserve books. Reference books and periodicals do not circulate.

The Library is open from 7:30 A.M. to 9:45 P. M., Monday through Thursday. Friday and

Saturday hours are from 7:30 A.M. to 6:00 P. M.

UNIVERSITY CHAPELS

Chapels are scheduled two days a week for 10:00 A.M. Tuesdays and Thursdays. Tuesday chapel held in Waller Hall is compulsory for freshmen who may use the front entrance only. All students are required to attend Thursday Chapel held in the First Methodist Church. Four unexcused absences in one semester place the student on academic probation for the following semester.

Administration





GEORGE HURT
Phi Delta Theta
President, A.S.W.U.

We, the Associated Students of Willamette University, are extremely proud to welcome you as one of us.

The fact that you have been chosen for this university indicates that your past abilities and performances are above average. As to the future, that's up to you.

There is an old saying which is quite prevalent around here, and that is, "you only get out of something what you put into it." This is never proved so conclusively as in college life, as to obtain the most from academic work and social activities, one must truly "put something into it."

We feel that Willamette has much to offer you, as a wealth of traditions and facilities have accumulated in this "oldest university

in the West." But, we are also confident that you, in your four years of undergraduate work here, will add to our university and these traditions.

It is the sincere hope of the student body, and its officers, that we can be of service to you. We hope that you, as one of us, will call on us at any time when we can be of aid.

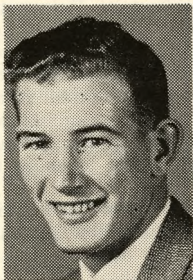
Sincerely,
George Hurt
President A.S.W.U.



BILL HARRIS
First Vice-President
Independents



STAN RYALS
Member at Large
Beta Theta Pi



AL McMULLEN
Second Vice-President
Phi Alpha



CAROL DIMOND
Secretary
Delta Gamma



DR. G. HERBERT SMITH
President of the University

To the New Students of Willamette University:

It is a pleasure to greet you and welcome you to the campus of Willamette University.

You have a great experience in store for you as you become acquainted with the traditions and the educational opportunities offered by Willamette. For one hundred years this University has been building an educational program to serve the young people who come to us. We want you to share in this to the full.

My earnest advice is to work hard, play hard and make friends of your fellow students and professors.

Sincerely,
G. Herbert Smith
President.



DEAN ROBERT D. GREGG
Dean of the College of
Liberal Arts

Welcome to the Class of 1952:

You and I are fellow members of this year's entering group at Willamette. There is much about our new University which we can learn together. First of all we can get acquainted with the faculty and administrative officers. I know that they will appreciate our cheery greeting on the campus and a longer talk when the opportunity affords. At the same time we should steep ourselves in the fine, century-old traditions of our School, its very heart and soul. You and I must measure up to these traditions and add to them, which is another way of saying that

we must make our parents, our friends, and our University proud of the class of 1952.

Dean of the College of Liberal Arts.
Robert D. Gregg



OLIVE M. DAHL
Dean of Women

To the New Students of Willamette, Welcome!

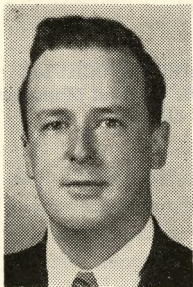
We have looked forward to your arrival on the campus as you have looked forward to coming. We hope we will be able to convey to you, each and all, how eager we are to be of aid to you in making the most of the College Experience.

By this note I hope to make clear to you that it is to these offices you may bring your many and varied questions. No matter

how simple it is, a question asked in time is a time and worry saver.

Here we will endeavor to help you find the contacts so you can enjoy a full happy college life and in turn serve the college generation of which you are now becoming a part. Welcome!

Olive M. Dahl
Dean of Women.



DR. RAYMOND A. WITHEY
Acting Dean of Students
Counselor on Religious Life

Having served as Counselor on Religious Life the past year, Dr. Withey is well prepared to combine the duties of this office with his new one as Acting Dean of Students. He accepted this new position following the resignation of Dr. Lawrence Riggs who will be

Dean of Students at DePauw University. Dr. Withey will carry on the personnel work of this office, aiding students who consult him about their problems.

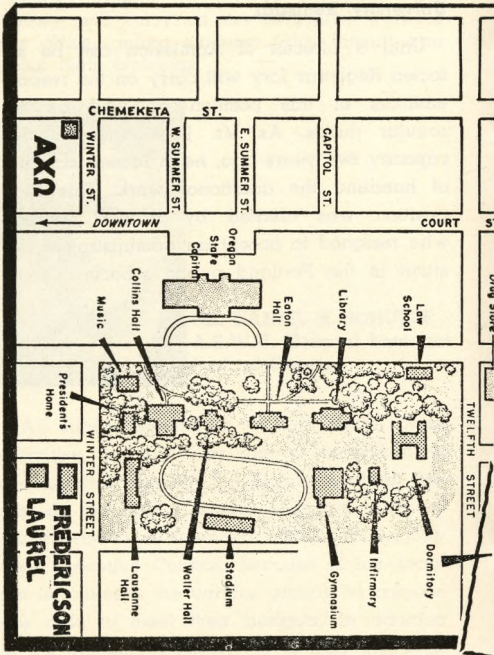


DR. DANIEL H. SCHULZE
A.S.W.U. General Manager
Prof. of German

All funds for use in student body, class activities, and all other campus organizations are handled through Dr. Schulze's office. Duties as A.S.W.U. General Manager also include serving as financial advisor to the Student Executive Council. Because of his genuine helpfulness the various groups on campus are able to meet their budgets. In addition to his advisory position, he is also instructor of German and Greek.

HAROLD B. JORY
University Registrar

Until a Director of Admission can be selected Registrar Jory will carry on the responsibilities of this position as well as his regular duties. As Mr. Jory acted in this capacity two years ago, he is indeed capable of handling the additional work. This new position was created by Walter Erickson who resigned to accept an administrative position in the Portland public schools.



CHEMEKETA ST.

AXN

WINTER ST.

W. SUMMER ST.

E. SUMMER ST.

CAPITOL ST.

DOWNTOWN

COURT

Oregon State Capitol

Collins Hall

Music

Eaton Hall

Library

Law School

President's Home

WINTER STREET

FRÉDÉRICSON LAUREL

Loussane Hall

Wollner Hall

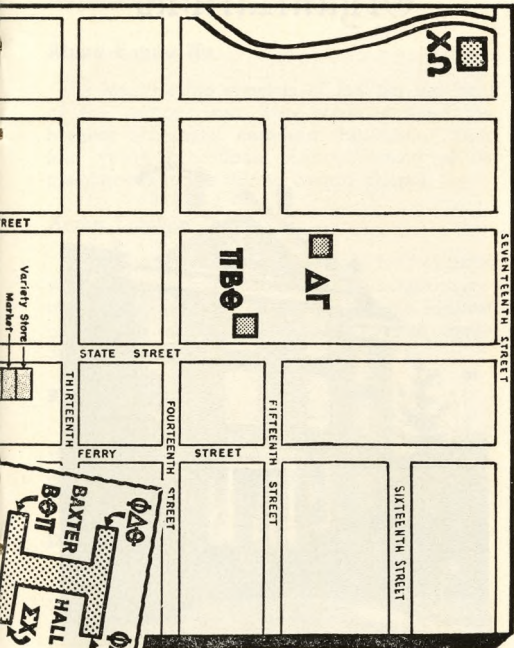
Stadium

Gymnasium

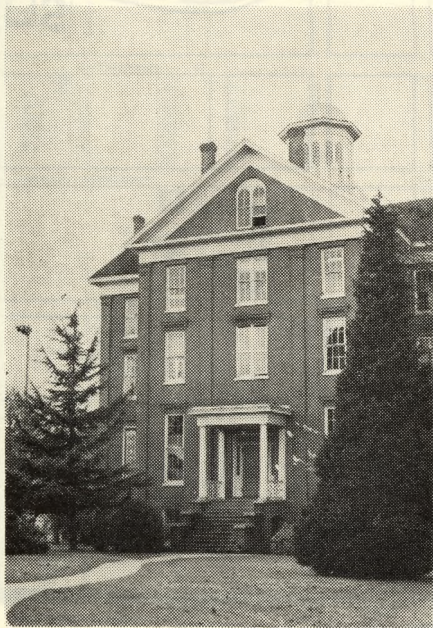
Infirmary

Dormitory

TWELFTH STREET



Organizations



ACADEMIC

Alpha Kappa Nu

Its membership consists of the ten per cent of the senior class who have attained the highest scholastic standing throughout their four years in college. Announcement of its members is made during award chapel.

Alpha Lambda Delta

This is a national honor society for freshmen women earning a scholarship average equivalent to or better than one half of the highest grade and one half of the next highest grade during their first semester of college.

Blue Key

Qualifications for membership in this national honor fraternity are outstanding character, scholarship, student activities leadership, and service.

Delta Theta Phi

The Wolverton Senate chapter on the campus has as its purpose the promotion of high scholarship united with the advancement of justice and high ideals in the legal profession. A national law fraternity, it celebrated

its twentieth year on the campus last year.

Mu Phi Epsilon

As a national women's music sorority, its purpose is the advancement of music in America. Membership is limited to music majors with a high scholastic standing.

Theta Alpha Phi

This national dramatic society is open to upperclass students who show outstanding ability in dramatics or in the direction or management of student productions. Its purpose is to foster dramatic interests and to unite socially those with histrionic talents.

Tau Kappa Alpha

A national Forensic fraternity whose membership is chosen from debate and oratorical squads. A member of the Inter-Collegiate Forensic League, the chapter sponsors inter-class, inter-collegiate debates, and oratorical contests.

Phi Eta Sigma

Freshmen men earning a scholarship average equivalent to or better than one half of the highest grade and one half of the next highest grade during their first semester of college are eligible for membership in this national honor society.

Sigma Delta Pi

Established on the campus less than two years ago, this national Spanish honorary limits its membership to students who meet the requirements in their Spanish courses, maintain a high scholastic standing, and are above Freshman standing.

ATHLETIC

Ski Club

Membership is composed of ski enthusiasts who meet twice monthly to plan ski trips to Mt. Hood or Hoodoo.

W.A.A.

Women interested in athletics as well as P. E. majors are active in the Women's Athletic Association. Its purpose is to provide sports for all girls and to promote interclass contests. Sports include tennis, softball, archery, volleyball, swimming and badminton.

"W" Club

All men earning a letter in varsity athletics on the campus are "W" Club members. Their purpose is to encourage a spirit of

good sportsmanship at all Willamette functions and to enforce the observance of all Willamette traditions and customs—rooks soon learn what we mean. Chosen annually is a Varsity Queen and court from the Freshman class by the club.

MUSICAL

A Cappella Choir

The Willamette A Cappella Choir, organized in 1939 is made up of sixty men and women under the direction of Dean Melvin Geist. Outstanding among its activities are the annual Christmas Vesper Service, the Messiah, and the Spring Concert Tour.

University Band

The University Band is an aid in creating pep and spirit at ball games. A spring concert tour is presented each year by this group under the direction of Maurice Brennen, Asst. Professor of Music.

University Orchestra

The orchestra provides musical interludes at plays and other school functions under the direction of Frank Fisher.

RELIGIOUS

Catholic Club

Meets every other Monday night in Chresto.

Inter-Faith Council

Representatives from religious groups compose the Inter-Faith Council which is the central religious organization on the campus.

Inter-Varsity Christian Fellowship

National organization of inter-denominational young people interested in high Christian ideals and fellowship. Prayer group every day at 1:00 P. M.

Wesley Fellowship

Activities for this organization include worship services, speakers, panels, CARE packages, aid to other countries, retreats and recreation as this Methodist group endeavors to gain a working philosophy of life.

Westminster Fellowship

This organization for Presbyterian students holds weekly firesides at the Church Manse and carries out a full schedule while bettering religious activity.

SERVICE

Alpha Phi Omega

Epsilon Kappa chapter of this national Scout honorary maintains several projects on our campus. Members are chosen from outstanding men in all classes.

Beta Alpha Gamma

A service organization consisting of outstanding sophomore women who "serve" by ushering at football games, plays, and concerts, assist at the voting polls, and maintain several projects.

Cap and Gown

A honorary society composed of Senior women possessing outstanding qualities of personality, service, scholarship, leadership, and Christian ideals. Activities include benefit socials, banquets, and cultural trips to various places.

Sigma Alpha Chi

A service organization of outstanding sophomore men who donate their efforts to the student body by ushering, assisting at the voting polls, and contributing general aid.

SOCIAL WELFARE

American Red Cross

The W. U. chapter of A. R. C. cooperates with the local headquarters in planning and teaching safety programs including first aid, life saving, and nutritional courses.

International Relations Club

This campus organization studies the problems of peace and welfare among the nationalities of the world. Prominent speakers lend new ideas to this group for the furtherance of better international relations. Correspondence with students of other nationalities is a popular activity of the group.

Y.M.C.A.

With a pattern of activities similar to that of the Hi-Y in high schools, the Y.M.C.A. has a two-fold purpose, a program of service to the University and the student, and the furtherance of Christian principles and fellowship.

Y.W.C.A.

In the pursuance of the realization of full and creative lives through a growing knowledge of God, and the determination to have a part in making this life possible for all people, the Y.W.C.A. follows an extensive service program consisting of the following factors: Big Sister program, teas, formal receptions, faculty firesides, group discussions, scholarship fund drive, and recognition services.

Living Organizations



FRATERNITIES

Local fraternities originated on the W.U. campus in 1920. The first organizers were World War I veterans who were determined to experience fraternity life as a result of observation of the comradeship among fraternity brothers in the service.

Five local fraternities came into existence but these proved too much of a financial burden to the student body. By 1926, three remained to perpetuate their organizations through the Willamette centennial year, 1942.

Three local Sororities also came into existence in the post War I years: Alpha Phi Alpha, Beta Chi, and Delta Phi. In 1943 a movement was started for National fraternities at W.U. resulting in the affiliation of four sororities with national organizations.

Returning to the campus in 1946 after being inactive during World War II years, the men's fraternities prepared to follow the affiliation movement. Now, there are four National organizations appearing on the campus.

Housing for fraternities is provided by the \$750,000 structure, Baxter Hall. First presentation of this Residence Plan for out-of-town men was made in 1944 by President Smith to the Board of Trustees. Since then, through generous contributions by friends of the Uni-

versity, the four fraternity units and Baxter Hall have been completed. With this modern housing plan, the proper environment for student living is provided by the university.

Because of Dr. Bruce Richard Baxter's contributions to the University during his term of Presidency from 1934 to 1940, it is only appropriate that this dormitory be named in honor of him.

LIVING REGULATIONS—WOMEN

Regulations herein assembled apply equally to both the dormitories and the sorority living groups.

To promote a spirit of democracy and new friendships, all women on the campus are required to live in one of the dormitories during their first year at Willamette.

Important rules to be remembered are:

HOURS—Women must be in by 10 P.M. week nights and Sundays.

Midnight Fridays and 12:30 Saturdays.

Sign-out required after 7:30 P.M.
Sign-in also required.

QUIET—Each week night from 7:30 P.M.

7:45 A.M. to 11:30 A.M.; 1:15 P.M.
to 4 P.M. except Saturdays.

3 to 5 P.M. Sundays.

Late permissions are granted for special

functions. When attending late campus functions, all women must be in twenty minutes after the first has returned.

Permission to leave town must be secured from the Dean of Women or Housemother. Address and probable time of return must be registered before leaving. Permission must also be secured to spend a night away from the hall.

LIVING ORGANIZATIONS—WOMEN

Alpha Chi Omega

Beta Chi Chapter

Vera JackPresident

Helen MontagVice-President

Barbara NelsonSecretary

Chi Omega

Nu Delta Chapter

Ginny AtkinsonPresident

Mary LibbyVice-President

Joyce ReevesSecretary

Delta Gamma

Beta Pi Chapter

Aldene GouldPresident

Carol DimondVice-President

Pat ParsonsSecretary

Pi Beta Phi

Maxine MeyersPresident

Phyllis FreresVice-President

Bea NagleSecretary

DORMITORIES—WOMEN

Present dormitories on the campus are: Lausanne Hall, 220 S. Winter and Frederickson Hall, 215 S. Winter. Officers governing these organizations are elected at the beginning of each semester by the student residents.

PANHELLENIC RUSH RULES

Complete rush rules for W.U. appear in booklet sent to all freshmen women.

National Principles

1. Rushing parties may not be scheduled which conflict with the regular University class program.
2. The Panhellenic shall agree upon a rushing program in which there is a reasonable and sane expense limit.
3. Panhellenic shall adopt a system of bidding and pledging which will not invite publicity.
4. All prospective members, participating in rushing, must be registered by the local Panhellenic Council.
5. Rush functions after the opening of colleges must be confined to the individual chapter houses.
6. Violation of Rush Rules must be reported

not later than the first regular meeting of Panhellenic after rushing is concluded.

Eligibility

1. All regularly enrolled women students of Willamette University who are registered for twelve or more semester hours of academic work and who are not on probation, are eligible for rushing and pledging.
2. Primary consideration will be given students who plan to graduate from Willamette.

INDEPENDENTS

The Independents are an active organization composed of both men and women students who participate in student body activities in much the same manner as the living groups. With their goal, the advancement of the individual, they invite guest speakers to attend their meetings and discussions.

Thomas NakagawaPresident

LIVING REGULATIONS—MEN

The following policies apply to men's living groups at Willamette:

1. The use of liquor is prohibited. Liquor is not to be brought into the men's residence halls.

2. Coats and ties will be worn to evening meals except at one regular time a week which may be designated by each group.
3. Study hours will be observed 7:30 to 10:00 P. M. Sunday through Thursday. On Wednesday, study hours will be from 8:30 to 10:00 P. M. Quiet hours begin at 10:30 P. M.
During the morning hours (8:00 to 11:00) and afternoon hours (1:00 to 4:00), the residence halls should be quiet for those who care to study or rest.
4. The present long standing policy of Willamette University is that there be no smoking on the campus. In view of the occupation of the new residence hall quadrangle for men, this policy will be interpreted to permit a man to smoke in his own room provided it is not objectionable to his roommate, and to permit smoking in the game rooms or recreation rooms of the respective units. In each fraternity this is the room between the main lounge and the dining rooms, and in Baxter Hall this is the area in the lower level directly below the main lounge.
5. Women shall be entertained only when the Head Resident or a substitute acceptable to the office of the Dean of Students is present. Women will be allowed on the first floor public rooms only. The hours during

which young women may be entertained in the men's residence hall quadrangle, including Baxter Hall and the fraternities are set as follows: Wednesday, 5:30 to 8:30 p.m. Friday, 4:00 to 5:30 p.m. and 7:00 to 11:30 p.m. Saturday, 7:00 to 12:00 m. Sunday, 1:00 to 4:00 p.m.

The above hours are in effect except when a home varsity inter-collegiate contest is scheduled, and then the houses are only to be open after the games until the hours indicated.

INTER-FRATERNITY GOVERNMENT

Rushing Rules

Subsequent to registration, at a time set by the Inter-Fraternity Council, each new registering man shall be given the opportunity to signify his choice of fraternities. This preference shall be written and filed in the office of Dean of Students. Official notification shall issue from the Dean's office to each fraternity respectively of the names which correspond to the list it has submitted.

No man shall be offered the opportunity to pledge any fraternity until the time of pledging set by the Inter-Fraternity Council and until he shall have completed registration. Completion of registration means the making of final arrangement with the business office

in regard to payment of tuition. Any violation of this provision on the part of any fraternity shall mean the forfeiture of the right to pledge the man in question for a period of thirty days.

Scholarship Rules

For purposes of determining scholarship, a list of active, inactive, and dropped men will be turned in to the Dean by each fraternity on Friday of the fourth week of each semester. Any subsequent drops or inactive men will count towards scholarship. Inactive men must declare their active intentions before this date or remain inactive for the semester.

FRATERNITY OFFICERS

Beta Theta Pi

Leonard Maurer	President
Russell Tripp	Vice-President
Dick Endsley	Secretary

Phi Delta Theta

Bob Sayre	President
Dick Reid	Reporter
Tom Jarvie	Secretary

Phi Alpha

Colonized under Sigma Alpha Epsilon

Jack Frost	President
Howard Lorenz	Vice-President
Al McMullen	Secretary

Sigma Chi

Bill Olsen	President
Dick Cravens	Vice-President
Tom Osborne	Secretary

CHURCH DIRECTORY

- Bethany Reformed—Capitol and Marion.
Calvary Baptist—Liberty and Miller.
Castle Chapel, United Brethren—Nebraska
and 17th.
Christ Evangelical, Lutheran—State, between
17th and 18th.
Church of Christ—1489 N. Cottage.
Church of God—1346 No. Church.
Church of the Latter Day Saints—Chemeketa
and Cottage, Salem Women's Club.
Church of the Nazarene—Center and 13th.
Court Street Christian—Court and 17th.
First Baptist—Liberty and Marion.
First Christian—High and Center.
First Church of Christ Scientist—Chemeketa
and Liberty.
First Congregational—N. Cottage and Marion.
First Evangelical—Marion and Summer.
First German Baptist—Cottage and D.
First Methodist—State and Church.
First Presbyterian—Chemeketa and N. Winter.
First United Brethren—Mission and 12th.
Highland Friends—Highland and Church.
Immanuel Baptist—Hazel and Academy.

Jason Lee Memorial, Methodist—Jefferson and
N. Winter.

Mill Street Methodist—Mill and 15th.

Seventh Day Adventist—Hood and Summer.

South Salem Friends—Commercial and Wash-
ington.

St. John's Lutheran—16th and A.

St. Joseph's Catholic—Cottage and Chemeketa.

St. Paul's Episcopal—Church and Chemeketa.

St. Vincent de Paul, Catholic—2200 Myrtle.

West Salem Methodist—State and Third.

Athletics





JERRY LILLIE

Athletic Director

The Bearcat football team won the 1947 Northwest conference championship under the guidance of Jerry Lillie who came to Willamette last year.



JOHN LEWIS

Baseball and

Basketball Coach

John Lewis, also new to Willamette last year proved his ability to coach a winning basketball team. No doubt injuries to key men the latter part of the season prevented W.U. from winning the basketball championship in the Northwest conference.

FOOTBALL SCHEDULE FOR 1948

- Sept. 18—University of Portland, Saturday afternoon in Portland.
- Sept. 24—Central Washington College of Education, Friday night at Salem.
- Oct. 1—Eastern Oregon College of Education, Friday night at Salem.
- Oct. 8—College of Idaho, Friday night at Salem.
- Oct. 16—University of British Columbia, Saturday afternoon 2:00 P.M. at Vancouver, B. C.
- Oct. 23—College of Puget Sound, Saturday afternoon 2:00 P. M. at Salem (Homecoming).
- Oct. 29—Lewis and Clark, Friday night at Portland.
- Nov. 5—Linfield College, Friday night at Salem.
- Nov. 13—Whitman College, Saturday night at Walla Walla.
- Nov. 20—Pacific University, Saturday night at Forest Grove.

ATHLETIC ACTIVITIES

Stadium and Grounds

Sweetland Field, located on the University

Grounds, is the scene of W.U. sports at the present. It is hoped that the new athletic field being developed in Bush's Pasture will be in use by next year. Landscape architects have pronounced the turf on the new field the best in the northwest. Present plans include providing an adequate field for spring sports and constructing a new stadium for fall and winter sports.

Intercollegiate

Willamette is a member of the Northwest Conference and has adopted the Conference rules for the regulation of its athletics. It is the plan of the administration to make University athletic activities clean and productive of real benefits to the participant under the personal supervision of the Director of Athletics and under the jurisdiction of the Athletic Board of Control and the Student Executive council.

Intramural

Intramural activities are maintained by the Director of Physical Education and the Chairman of the Interclass Rivalry Committee.

All types of sports are represented in these activities. Games and contests are carried on during the noon hours.

PEP ORGANIZATION

This organization consists of the A.S.W.U. under direction of the Yell Team, Song Squad, and Rally Committee. The University Band also plays an important part in maintaining good school spirit.

It is the duty of the students to cooperate with the Yell Team by knowing the songs and yells thoroughly and by turning out for all rallies and games.

VARSITY YELLS

Fight Team

Fight, team, fight, (softly)

Fight, team, fight, (louder)

Fight, team, fight, fight! (shout)

Go Get 'Em Bearcats

Go get 'em, Bearcats, go get 'em!
(slowly, softly)

Go get 'em, Bearcats, go get 'em!
(faster, louder)

GO GET 'EM, BEARCATS, GO GET 'EM!

"Spell It"

Be . . ar . . ca . . ts (slowly)

Be . . ar . . ca . . ts (faster)

Be . . ar . . ca . . ts (fast)

Be . . ar . . ca . . ts (very fast)

BEARCATS! (shout)

Locomotive

(start slowly, then increase)

W-U-Rah! Rah! Rah! Rah!

W-U-Rah! Rah! Rah! Rah!

W-U-Rah! Rah! Rah! Rah!

W-U-Rah! Rah! Rah! Rah!

WILLAMETTE U. - - - RAH!

Yea W. U.

Yea, W. U.

Yea, W. U.

Yea, W. U.

Fight 'em, fight 'em, fight 'em!

VARSITY SONGS

I LOVE WILLAMETTE U.

I love Willamette U.

I love her campus too;

I love her Profs, so good and true,

I love her spirit real true blue.

I love the old mill stream,

I love to sit and dream;

I see it all in shadows cool,

I love our dear old school.

FIGHT, BEARCATS, FIGHT

Fight, Bearcats, fight!

A victory for W. U.

Cardinal and Gold, victorious of old

Will give us a spirit ever true.

Fight, fight, fight!

Cardinal courage show
And Gold is our faith so true
We shout our war cry out to you
Come on and fight, fight, Fight!

INDIANS KNOWN TO JASON LEE

Oh, the Indians known to Jason Lee,
Went out one night on a little spree
They organized a rhythm band
That soon was known throughout the land
Then they went off to college
And they took their band along.
With sharps and flats and feathers in their
hats
They beat their big tom toms;
The big chief smiled;
The squaws went wild
As they sang their college song
Woo-oo Woo-ooo Woooo-ooo
At Willamette U. each gal and lad
Has the same kind of rhythm that the In-
dians had
The red man's ghost is with us still
And if we don't whoop, we're sure they will.

CANNIBAL KING

A cannibal king with a big nose ring
Got stuck on a Zulu maid,
And every night when the moon shone
bright
Across the canal he'd wade

To hug and kiss his dusky miss
Out under the big bay tree,
And when they met they sang a duet
That sounded like this to me:
Oh, Jason Lee, socretty boo-ya
Oh Poppa Waller, Chenickety umpa
Umpa-Umpa-Um.

FIGHT SONS OF OLD WILLAMETTE

Fight, sons of old Willamette,
Fight, 'til the battles done;
With a valor ever bold
For the Card'nal and the Gold
Fight 'til the vict'ry's won!
Many hearts are standing by you
With a spirit ever true
Fight with courage never dying
Fight! Willamette U.

VICTORY SONG

Vict'ry for W. U.
The bell in the tower rings.
The battle's done;
The victory won;
Card'nal and Gold are flaming
Proudly o'er us.
Here's to the Bearcat Team
Who carried our colors through!
Our song shall go
Till the world will know
There's a vict'ry for W. U.

AROUND THE CAMPUS

Around the campus of old Willamette
We'll shuffle the cards and roll the bones
along, along, along.

Around the campus of old Willamette,
We'll shuffle the cards and roll the bones
along.

Slinga da ink, slinga da ink,
Slinga da ink and pusha da pen along,
along, along.

Around the campus of old Willamette,
We'll slinga da ink and pusha da pen along,
Worry the Profs, worry the Profs,
Worry the Profs and kid them right along,
along, along—

Boys sing:

Fuss the girls, fuss the girls,
Fuss the girls and kid them right along,
along, along—

Girls sing:

Vamp the boys, vamp the boys,
Vamp the boys and kid them right along,
along, along—

W. U., W. U.,

W. U. will help you right along, along,
along.

Each class insert its own number:

'48, '48 (shout)

'48 will help you right along, along, along.

Constitution



A.S.W.U. CONSTITUTION

as amended in 1946

PREAMBLE

We, the students of Willamette University, in order to provide an organization for the control of all matters of general student concern do hereby ordain and establish the following constitution.

Article I—Organization

Sec. 1, Name. The name of this organization shall be the Associated Students of Willamette University.

Sec. 2. Membership. All registered students of Willamette University shall be members of the Association upon payment of the student body fee.

Article II—Officers

Sec. 1 The officers of the Association shall consist of the president, the first vice president, the second vice president and the secretary, all of whom shall be chosen from the two upper classes of the following year and shall be elected for a term of one year.

Sec. 2. The president shall preside at all meetings of the Association, shall be chairman of the Student Council, and shall perform the usual duties pertaining to this office.

Sec. 3. The first vice president shall assume the duties of the president in the ab-

CONSTITUTION

sence of that officer and shall act as chairman of the Social Activities Board.

Sec. 4. The second vice president shall be in charge of all ASWU elections.

Sec. 5. The secretary shall keep a record of all meetings of the Association and of the Student Council and shall perform the usual duties pertaining to this office.

Article III—Meetings

Sec. 1. Meetings of the Association shall be held upon the call of the president on his own initiative, upon request of the Student Council, or upon petition of fifty members of the Association in which they state the object of the desired meeting.

Sec. 2. Twenty-four hours notice shall be given for all meetings.

Sec. 3. Fifty-one percent of the members of the Association shall constitute a quorum.

Article IV—Elections

Sec. 1. The elections shall be held at least one month before the close of the second semester, the date to be set by the Student Council. All candidates for the elective offices of the Association shall be nominated by petition of twenty-five members of the student body. The petitions must be presented to the Student Council at least one week before the

CONSTITUTION

election; whenever possible at least two candidates for each office shall be named.

Sec. 2. The Australian ballot system shall be used for all elections.

Sec. 3. All members of the Association whose names appear on the official poll books shall be entitled to vote.

Sec. 4. The voting hours shall be set by the Student Council and published one week before election day.

Sec. 5. All officers shall be elected by a majority vote and in case no candidate receives a majority the Student Council shall call a new election within one week; at this election only the names of the two candidates receiving the highest number of votes shall appear on the ballot.

Article V—Vacancies

Sec. 1. All vacancies which may occur in the elective offices of the Association shall be filled by the regular popular ballot at a special election.

Article VI—Funds

Sec. 1. Funds of the Association shall be derived from money received in the form of dues paid upon registration in Willamette University and from such other receipts as may result from the activity program of the Association.

CONSTITUTION

Sec. 2. Student body dues are fifteen dollars per person per semester, five dollars of which will be paid directly to Willamette University for the support of Athletics.

Sec. 3. Association dues shall be allotted as follows:

- (a) 35 percent to Publications
- (b) 10 percent to Office
- (c) 3 percent to Willamette University
- (d) 11 percent to Social
- (e) 4 percent to Class fund
- (f) 7½ percent to forensics
- (g) 7½ percent to Drama
- (h) 12 percent to Music
- (i) 1 percent to May week-end
- (j) 1½ percent to Freshman Glee
- (k), 1 percent to Darkroom
- (l) 3 percent to Law School
- (m) 4½ percent to Reserve Fund

Sec. 3. Funds of the Association shall be administered as outlined in Article IX, below.

Article VII—Publications

Sec. 1. The official publications of the Association shall be the Collegian, the Wal-lulah, the Student Handbook, the Fusser's Guide, and such other publications as may be approved by the Student Council.

Article VIII—Student Council

Sec. 1. The Student Council shall consist

CONSTITUTION

of the president, the two vice presidents, the secretary, a member of the faculty selected by the council for a term of one year, and one representative from each class to be selected by the separate classes, and one representative from the Law School to be selected from members that are attending law school. The runner-up for the position of student body president shall be a member of the council as a member-at-large. The editor of the Collegian and General Manager shall be council members but they shall have no vote. In case the newly elected Student Council has no returning student member, the Student Council shall elect following the student body election from the Freshman, Sophomore, or Junior class representatives of the foregoing year a holdover member who will serve for a year with the power of vote as a member-at-large.

Sec. 2. The council shall hold meetings as it deems necessary or upon call of the president. Six voting members besides the presiding officer shall constitute a quorum.

Sec. 3. The council shall enforce the Constitution, shall have charge of elections, shall be responsible for adherence to the traditions, shall make appointments for ASWU activities, committees and boards, and shall be

CONSTITUTION

responsible for the general interests of the Association. The council shall be the chartering agency for all student activities with the exception of those under panhellenic or inter-fraternity control.

Sec. 4. Emergency powers may be granted to the council by a three-fourths vote of the Association. When such emergency powers are granted, the council may act on all matters without strict adherence to the constitution. Such powers shall be granted only for one year at a time and only when school or national emergencies make such action practicable.

Article IX—Finance Board

Sec. 1. The membership of the Finance Board shall consist of the student body president, who shall act as chairman, the two vice presidents, the secretary, the publications manager, the graduate athletic manager, the general manager, and the finance manager of the Educational Activities Board.

Sec. 2. The Finance Board shall administer all funds of the association under supervision of the General Manager, provided however, that the class funds shall be administered by such officers as the individual classes may determine.

Sec. 3. The budget of the Finance Board is

CONSTITUTION

subject to the approval of the Student Council.

Sec. 4. The Finance Board shall publish in the Collegian during the second semester the budget for the ensuing year and, within a month after registration day in the fall, shall publish in the Collegian the report of the finances of the preceding year.

Sec. 5. Unused funds for one school year shall be left to the credit of the activity fund for which they were allowed and such deficits as are approved by the Finance Board shall be deducted from the sinking fund; if not approved such deficits may be deducted from the corresponding funds of the following year.

Article X—Publications Board

Sec. 1. Membership of the Publications Board shall consist of the student body president, the publications manager, the editors of the Collegian and the Wallulah, two members of the Association selected by the Student Council from other than its own membership, two faculty members selected by the Student Council for one year terms, and the general manager who shall vote only in case of a tie.

Sec. 2. The Board shall meet as it deems necessary or upon call of the chairman.

CONSTITUTION

Sec. 3. The Publications Board shall maintain monthly reports of progress in organization, shall be responsible for training of personnel, shall appoint the editors of the Collegian and the Wallulah, the publications manager, and other editors of ASWU publications by review of applications rendered and shall set all salaries for members of the business and editorial staffs subject to the approval of the Finance Board and the Student Council.

Article XI—Athletic Board

Sec. 1. Membership of the Athletic Board shall consist of the student body president as chairman pro tem, the president of Willamette University, the director of athletics, the general manager, the faculty athletic representative, two members of the board of trustees elected by that board, and two members of the Association appointed by the Student Council from other than their own membership.

Sec. 2. Regular meetings of the board shall be held during the first week of each month except when there be no matters to come before the board.

Sec. 3. The Board shall prepare a general athletic budget for all sports and shall submit this budget to the Student Council. Upon

CONSTITUTION

adoption of the budget the board shall enforce the same throughout the ensuing year. The board shall attempt equitable distribution of funds to the various sports and shall foster no sport at the expense of any other. The board shall approve all athletic schedules and may require any reports and such records as it sees fit. The board shall be directly responsible to the Student Council for the execution of their duties.

Article XII—Social Activities Board

Sec. 1. Membership of the Social Activities Board shall consist of the first vice president acting as chairman, the sub-committee of the faculty-student affairs committee and students representing each of the separate organizations as determined by the Student Affairs Committee.

Sec. 2. The Board shall meet each semester to form the social calendar and at any other time when deemed necessary.

Sec. 3. The Board shall compose the social calendar for the school year and shall mediate when conflicts arise.

Article XIII—Cavern Board

Sec. 1. Membership of the Cavern Board shall consist of the student body president, the first vice president, two members of the student body at large appointed by the Stu-

CONSTITUTION

dent Council from other than its own membership.

Sec. 2. The board shall meet as it deems necessary or upon call of its chairman.

Sec. 3. The board shall act as an advisory committee to the business manager of Willamette University.

Article XIV—Educational Activities Board

Sec. 1. Membership of the Educational Activities Board shall consist of the student body president, the general manager, a drama manager, a forensic manager, a music manager, and a finance manager selected from the student body at large by the Student Council.

Sec. 2. The Educational Activities Board shall meet as it deems necessary.

Sec. 3. The Board shall be responsible for the budgeting of their activity funds and shall determine the policy and the activity schedule of the educational activities: music, drama and forensics.

Article XV—Petitions

Sec. 1. Any individual or group of individuals may petition the Student Council on any matter of student interest. The Student Council shall consider all petitions and recommend decisions to the proper administrative official, committee or board.

CONSTITUTION

Article XVI—Repeal or Amendment of Legislation

Sec. 1. Any act of any officer, committee or board dexisting under this constitution may be repealed or cmended by a two-thirds vote of quorum at a meeting of the Association.

Article XVII—Amendment to Constitution

Sec. 1. Amendment to this constitution shall be proposed by the Constitutional Revision Committee at a meeting of the Association, shall then be posted for one week, and must appear in the Collegian. At a subsquent meet- ing they may be passed by a two-thirds vote of quorum.

BY-LAWS

Article I—Awards Committee

Sec. 1. Membership of the Awards Commit- tee shall consist of the president, the secre- tary, the faculty member of the Student Coun- cil, the general manager and the various fac- ulty heads of the respective activities.

Sec. 2. The committee shall decide what awards will be given to members of the As- sociation who have performed exceptionally meritous work.

Sec. 3. Awards shall be presented only on

CONSTITUTION

award days designated by the Awards Committee.

Sec. 4. Funds for the awards shall be derived from the various activity allocations.

Article II—May Week-End Committee

Sec. 1. Membership of the May Week-End Committee shall consist of a manager appointed by the Student Council and three assistants appointed by the president.

Sec. 2. The May Queen and her court shall be elected by a regular election of the Association.

Article III—Freshman Glee Committee

Sec. 1. Membership of the Freshman Glee Committee shall consist of a manager elected by the freshman class and three upper classmen appointed by the president.

Sec. 2. The committee shall lay down the rules of the Glee and shall appoint three judges from the faculty.

Article IV—Homecoming Committee

Sec. 1. Membership of the Homecoming Committee shall consist of a manager appointed by the Student Council and three assistants appointed by the president.

Sec. 2. The committee shall promote the Homecoming sign contest and other traditions associated with Homecoming.

CONSTITUTION MEMO

Article V—Constitutional Revision Committee

Sec. 1. Membership of the Constitutional Revision Committee shall consist of the president, the senior class representative on the Student Council and three other members appointed by the president.

Sec. 2. The committee shall propose revisions to the constitution at any meeting of the Association.

Article VI—Judiciary Committee

Sec. 1. Membership of the Judiciary Committee shall consist of two members to be elected from the senior class, two members to be elected from the junior class, one member to be elected from the sophomore class, one member to be elected from the freshman class, and one member each to be elected from the College of Music, College of Liberal Arts and College of Law.

Sec. 2. Members shall serve for a term of one year, and each shall be elected by a regular vote of the Association to be held not later than the third week of school in the fall semester.

Sec. 3. Nominations shall be by the usual petitioning procedure with each petition specifying the group to be represented.

Sec. 4. The presiding officer shall be elected from among the membership of the com-

CONSTITUTION MEMO

mittee, and meetings shall be held upon call of the presiding officer or Student Council. Six members shall constitute a quorum for meetings.

Sec. 5. A secretary shall be elected from among the membership of the committee whose duty it will be to keep a stenographic record of all meetings.

Sec. 6. The committee shall pass on questions of interpretation of the Constitution, and shall handle such other disciplinary matters of problems that may be referred to it by the Student Council.

Sec. 7. The committee shall hold hearings with adequate notice on all matters referred to it for decision.

We, the Associated Students of Willamette University, hereby move to amend the By-Laws of the Constitution of the ASWU, by adding the following:

"Article VII—Procedure for Chartering ASWU organizations."

Sec. 1. All petitions for charters shall be forwarded to the Student Affairs Committee and then to the Student Council, and shall require approval of both groups before issuance of a charter.

Sec. 2. All groups chartered shall be able to show evidence that they are conforming

CONSTITUTION

to specifications of proposed constitution.

Sec. 3. All groups chartered shall bank all funds through the General Manager of the ASWU.

Sec. 4. The Student Council shall review all charters and constitutions at least once each school year.

MEMO

CONFIDENTIAL

MEMO

TO: [Illegible]

FROM: [Illegible]

SUBJECT: [Illegible]

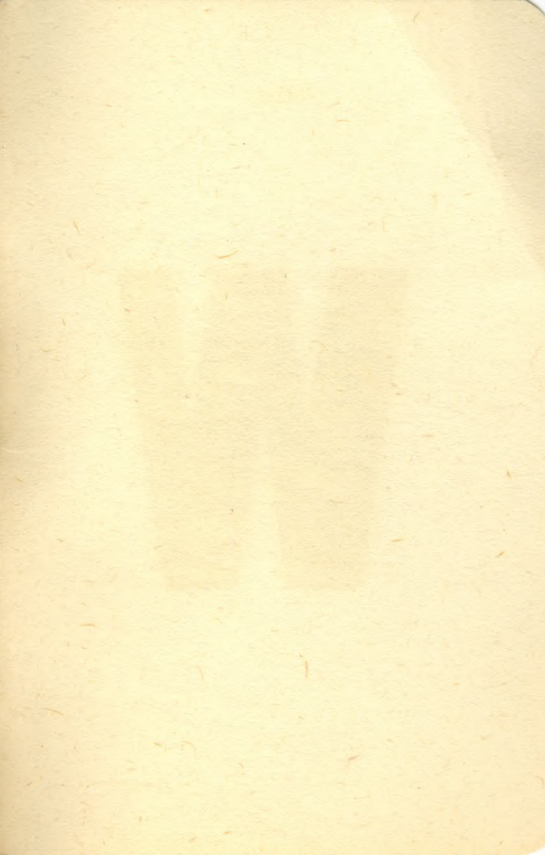
[Illegible text follows]

MEMO

MEMO

MEMO

MEMO



W