

Classes Ready for 52nd Glee

Ten Judges Becoming Old Hands

The ten most mysterious people, perhaps, behind the Glee scene are its judges. All those selected this year, except one, have judged in the last two years and are music teachers, alumni, or profs, many of whom have participated in or written Glee songs.

OF THE THREE music judges, Dean Melvin Geist, since his 1939 appointment as Dean of Music, has judged "about half a dozen times." Mrs. Howard Miller wrote the words of the winning song of 1931, having written them four years. She teaches at the Blind school. Mr. Al Robertson directs music at Beaverton high and is the "uninitiated" adjudicator.

One of three judges of words, Mrs. Grace Lemm, speech therapist for Marion county, will be judging for the fourth time. Dr. Helen Pearce is well-known as a Willamette pedagogue, retired in recent years. Mrs. Jean Vancil is choral director at Grant high, receiving her training at Whitman.

MISS FAX SPARKS is one of four presentation judges. Sister to professor Lestle Sparks, she composed "I Love Willamette U." Dr. David Putnam who judged formation in 1957, obtained his B.A. and M.A. at Willamette and worked on Glee construction crew in 1940.

Mrs. Alice Rose Jones of Salem wrote the winning Glee songs of 1945 and 1947, and teaches music. Mr. Richard McClintic directs three orchestras in Salem schools and judged Glee words in 1959. He says, "This kind of thing is good with kids doing something on their own without relying on books and pantomimes."

Jason Victory Earns K. C. Trip

John Lewis and his Bearcats won all the 1960 basketball marbles Wednesday night as they defeated the Linfield Wildcats 70-64 in the NAIA District 2 playoff. The victory earned the Jasons a trip to Kansas City and a spot in the national NAIA competition. This will be the first trip to the national finals for Lewis and the Bearcats.

Ed Grossenbacher closed out his college career with a 20 point scoring effort to lead the Cat's attack. Willamette won despite a player handicap.

BULLETIN

Tickets to Willamette's 52nd "Greatest Show on Earth" tomorrow night at 8 p.m. are limited to one or two per student in order to lessen the wall-falling danger of Willamette's gym, seating capacity only some 2,000. Non-participating students may apply for tickets in the SB office.

Parodies Pack Program; Pennant Prize Planned

By VIRGINIA MORAN

A host of 450 Willamette voices will serenade parents, alumni, faculty and judges in the 52nd annual Freshman Glee tomorrow night at 8 p.m.

"SERENADE OF '60," featuring a sultry, almost tropical decoration scheme of lavender on black, is expected to play to a capacity audience of 2000 in the Willamette gymnasium.

The juniors are expected to be out for blood and the cardinal-and-gold banner after having taken it as sophomores last year. Seniors, too, have their eyes on the large economy-size pennant, to top off their senior year and repeat one lone victory as freshmen. The sophomores have a chip on their shoulders as they would like to forget "Boom, Jason" with a first prize, to prevent the frosh from breaking a two-year stint as Mill stream-wet rooks.

WELL-POLISHED by a week of intensive rehearsal, a quartet of sentimental melodies will highlight the evening. The seniors, led by Gary Lovre, will offer "Celestial Rhapsody" in a treble clef and music staff formation, according to formation leader Ron Walker.

The juniors say there's "Spring in Our Hearts" under

Willamette Collegian

Vol. LXXI

Salem, Oregon, March 4, 1960

No. 20

Law Students Elect Officers, Present Awards

Students of the College of Law have elected Ronald Hersberger as their student body president for 1960-61. Hersberger succeeds Martin Wolf.

Other new officers are Verne Evans, vice president; Thomas O'Dell, secretary-treasurer; Thomas Niebergall, student council representative.

Moot Court awards and certificates for various offices held were presented by Law Dean Seward Reese, who gave a summation of the past year's accomplishments and his expectations for the future.

Awards for service during the past year in various school activities were granted to Lawrence Rew, intramural athletic program; Theodore Carlstrom, Richard Franzke and Martin Wolf, National Moot court competition; Richard Franzke, Ronald Lansing, John Dubay, Richard May, William Schantz, Robert Fox, Theodore Carlstrom, Pat Albano and Helen Simpson, Willamette Law journal; Joe Kershner, brochure of graduation class.

Law Students II: Ralph Schlegel, student legal research; William Schantz, Evelyn Scott and Wallace Carson, class presidents; Martin Wolf, Kendrick Mercer, Richard May and Gordon MacPherson, outgoing Student Bar association officers.



THE CHALLENGERS, the frosh at an early-morning practice show what must be some potentiality, though somewhat dormant at this point. The 52nd annual Glee will begin tomorrow at 8 p.m. (Photo by Bruce Black.)

the inspiration of songster Jerry Darby and drill sergeant Tony Meeker. The 87 men and women will represent two hearts melting together, then pierced by an arrow, all prior to the beginning of their song.

"SEASWEPT SERENADE" is being presented by the 102 sophomores with Lyle Brown, song leader, and Tom Hemingway, formation leader in a four-pointed star formation done in navy-blue and white.

A classic note in the shape of a grand piano will be sung by 200 freshmen in their "Serenade in Black and White," with two young women setting the pace—Sue Lewis, song leader and Joan Taylor, formation leader.

A re-broadcast on Sunday, from 7-9 p.m., will feature the entire program, beginning with parodies from each class, followed by senior class cut-ups. Freshman class president Bob Hakala, and master of ceremonies Glee Manager Glen Downs will speak.

WHILE THE TEN judges are debating the merits of words, music and presentation of the serenades, entertainment narrator Dave Beaton will take over with a skit parodying a pinning serenade. The seven-man Freshman Combo will add a musical contrast with a Dixieland offering.

SOME ADROIT stalling is expected from Dr. Daniel Schulze, as he takes the stage with the names of winners. Getting canner every year, he has seen 30 years of Glee as professor of German at Willamette and performed his spine-tingling stalling tactics for seven.

The winning class of 1960 will then converge toward the coveted banner, lightly held by an honor guard of freshman committee heads who have planned to either beat a hasty retreat or join their class in jubilee.

CHIEF PLANNERS and technicians of the many-faceted performance are Doug Simon, assistant Glee manager; Joy Davis and Virginia Moran, executive secretaries; publicity, Bill Hemenway; tickets, Ted Fahlen; decorations, Merle Gillespie; programs, Jo Ann Tacker; souvenirs, Judy Triplett; backdrop, Sue Whitelaw; lighting, Barney Kliks; stage, John Abele; pianos, Max Merrill; records, Tom Dunham; and ushers, Lynne Higginbotham.

LATE PERS of 2 a.m. for winning women are the bait for a balky, sleepy class, with 1 a.m. the time for other participants.

In accordance with tradition (and infirmity records) the winning class will have the privilege of tossing the losing class into the cold Mill stream on Blue Monday, right after the "special convocation" at 11 a.m., held in lieu of regular classes, which will be made up Tuesday at 11 a.m.

Hike in Tuition Proposed

A portion of a future convocation assembly will be reserved for university President G. Herbert Smith's

presentation of plans for increasing either next year's tuition or room and board fees — or perhaps both.

The finance committee is at present in the process of determining just how great the increases will have to be. "Chances are," Dr. Smith explains, "any increases in the cost of tuition and room and board will be slight, but it is doubtful if small raises in student fees can be avoided."

Students may be surprised to discover that the room and board rates at the state schools are greater than WU's. Dr. Smith points out that thus far since 1945 there have been very few maintenance expenses on WU's dorms but it is becoming apparent that in the next few years there will definitely have to be an increase in student fees.

"Since there is no maintenance fund available we cannot hope to be able to afford major improvements without doing this," explains Dr. Smith. At present, the allocation of funds is being studied by the finance committee.

"Students can rest assured that there will be no such sharp increase as the \$200 raise in tuition at Whitman or the similar sizable tuition increase at Reed," adds Dr. Smith. "A raise such as the \$50 tuition increases at Linfield and Lewis & Clark will be more in order."

Orchestra Plays Wed.

The university orchestra, under the direction of Charles Yuki, will perform their annual March concert next Wednesday, at 8:15 in Waller hall.

The instrumental group, consisting of approximately 50 members, will perform Schubert's "Unfinished Symphony" and Beethoven's "Egmont Overture."

Campus Scene

Tomorrow

Last day of Methodist Youth conference, Fine Arts.

Tuesday

Student recital, 3 p.m., Music school.

Thursday and Friday

Caine Mutiny, 8:15 p.m., Fine Arts.

G L E E

Today

12-1 Seniors ——— Waller

Juniors ——— F.A. 145w

Sophomores ——— F.A. 231w

Freshmen ——— Gym

4-5 Seniors ——— Gym

Juniors ——— F.A. 145w

Sophomores ——— Waller

Freshmen ——— F.A. 231w

6:30 Seniors ——— Gym

to Juniors ——— F.A. 231w

9:30 Sophomores ——— Waller

Freshmen ——— F.A. 145w

Tomorrow

6-7 Freshmen ——— Gym

8-9 Sophomores ——— Gym

9:15 to 10:15 Juniors ——— Gym

10:30 to 11:30 Seniors ——— Gym

8 p.m. Freshman Glee

Immediately following Glee

Class parties

Willamette Collegian

Official publication of the Associated Students of Willamette University. Entered at the Postoffice at Salem, Oregon, for transmission through the mails as second class matter. Published weekly except during vacations and examination periods. Subscription rate \$2.00 per year.

HOWARD NELSON
Editor

CAROL McMINIMEE
Publications Manager

Death May Come . . .

"I think Glee is the biggest farce on campus," a freshman commented earlier this week.

Such enthusiastic comment seems to typify the growing apathy toward that old Willamette tradition, Freshman Glee, as the day of performance reckoning approaches.

Even among freshmen, where enthusiasm should abound if it is anywhere to be found, that enthusiasm has seemed to be lagging. Participation and enthusiasm among upper classes has been much worse.

Although Freshman Glee is an old tradition, even some who have seen it since its early stages predict its natural death "just any time now."

A group of professors, perhaps since Glee's beginning, have disliked the week, because of its competition with what they say is really important, the academics.

Glee does still hold a certain appeal, as attested by the almost 50 per cent participation among class members. Here is a chance for the expression of originality and leadership among the select leaders. Here is a chance for meeting classmates. Here is a chance for perfecting singing and marching ability, as well as for working as one of a competitive team.

Blue Monday can be a "roaring" time, particularly for good-sport losers who may recognize their good excuse for doing what they would really like to do anytime.

The some 2,000 tickets to the performance, going at a premium, indicate the grandiose appeal that Glee holds to the outsider.

Glee should not be kept going just because it is a tradition—and it does appear to be losing appeal and facing increasing criticism. Although tradition provides the inertia, tradition certainly is not enough. Continued appeal is essential to make the hundreds of man-hours investment worthwhile.

Yet the continued life or death of Glee is really a question that may be answered two different ways—first, by future positive, aggressive action; second, by a continued lack of that action.

Innovations Invade Study

By HENRIETTA NICKELS

Nicety of niceties! Seductive words like "under achiever" and "leave of absence" appear to be invading the academic world.

THE ONCE so fashionable "gentleman's C," or "just-passed-by-the-

skin-of-my-teeth" grade, has recently given a phoenix-like birth to a new term in the realm of higher education — the "under achiever." (Observation: The advent of this new term gives the lazy, "don't-give-a-damn" student a sense of security and optimism. Above all, he is still an "achiever" — even though his achievements may be "under" the satisfactory achievement level.)

The new group of under achievers pervading college campuses has given rise to some innovations in policy-makers among administrators. As President Charles W. Cole of Amherst college explained in his 1959 report to the board of trustees, Amherst has decided to grant the under achievers a year's "leave of absence" in hope "that some months in another environment would give them enough added maturity and perspective so that they might return here and perform at a higher level." The leave of absence makes "flunking out" an archaic expression of the past, when colleges were colleges — not country clubs, and students were students — not achievers, especially of the "under" type.

THE NEW program would obviously stress an attempt at a rehabilitation of the individual — and specifically, an improvement of his intellectual outlook and studious intentions. Yet, the rejected under achiever would probably spend his leave of absence at home (Palm Beach or the Riviera for the more wealthy), until his period of probation was terminated. Is it possible that maturity and perspective can be gained from such a removal from intellectual stimulus of the type found on college campuses? The answer to this question will be found in the future results of the application of the "leave of absence" technique.

Yet, there are certain advantages to be found in the leave of absence theory for under achievers. It certainly gives the "late maturer" a chance to catch up with his contemporaries, and it may also give the sluggish, but intellectually capable, student an added stimulus when he views the advantages of a university education from outside rather than from within its classrooms.

WHEN ASKED for his opinions on the leave of absence program, Dean Walter S. Blake remarked: "I

'Veritable Flower Bower'

File Excerpts Show Change

Freshman Glee, like all other Willamette traditions, has been modified over the years until the founding fathers of the songfest probably wouldn't recognize their own handiwork. The following chronological excerpts are designed to show the evolution of Glee.

ONE YEAR AGO . . .

Either Jason didn't boom loud enough for last year's freshmen or the rags to riches saga reigned supreme, for '58's losers became '59's winners. The sophomores were victors; the freshmen swam. Main events on the Blue Monday card were "Free Love" and "Obstreperous Osculation."

FIVE YEARS AGO . . .

The class of 1958 started its Willamette career off with a bang as they collected 345 out of 360 points to win the 1955 Glee with

one of the best-known Glee songs, "Jason Daddy." That year Dr. Daniel Schulze, winner announcer extraordinary, promised rendition of a chorus or two from "Time On My Hands." Subsequent issues of the Collegian failed to disclose whether the promise was kept.

TEN YEARS AGO . . .

The sophomores lost their parodies, a janitor predicted a soph win, but the juniors fought their way to victory and picked up their second Glee win. Losing class presidents were to pick co-eds from their respective classes to serve as a harem for the winning prexy.

FIFTEEN YEARS AGO . . .

Glee was one activity which didn't give way to the war effort, but it was dedicated to the former commanding officer of the V-12 unit. A huge yearbook backdrop

with turning pages was featured in the decorations, and a jukebox dance was held after the event. The sophomores upset all the pre-Glee dope and walked off with the banner.

TWENTY YEARS AGO . . .

The exuberant seniors in 1940 ripped the Glee banner to shreds after winning their third consecutive victory. Similarly for the third consecutive year the juniors went wading. Pictures in the '40 Wallulah show that bathing trunks were the featured apparel of the day for the junior men.

TWENTY-FIVE YEARS AGO . . .

Quoth the Collegian in 1935, "... this weekend will add another chapter to the romantic story." Glee that year sent the campus into a "frenzy of preparation." The juniors, class of 1938, collected the third share of their four-year monopoly of the Glee crown. The platform committee built the platform with their own hands, and the classes staged rather intensive discussions about the practice schedule. It seems there wasn't one.

THIRTY YEARS AGO . . .

Warnings were issued against taking a dip in the Mill stream without adequate protection. It seems, according to the 1930 Collegian, that genuine danger lurked hidden on the stream bed, often injuring the unwary. The juniors won the contest, and the seniors, although their words were written by Marion Morange, now head of the language department, came in a definite third, avoiding the stream by two points.

THIRTY-FIVE YEARS AGO . . .

Even though the frosh lacked confidence in 1925, they emerged triumphant before a packed crowd in the Salem armory. As one freshman exclaimed, "Dear old Prof. Mathews, (announcer of Glee winners during that era), 'he always does say the right thing.' The juniors initiated a new custom for the 17th Glee by wearing costumes.

FORTY YEARS AGO . . .

Public opinion didn't agree with the judges, according to the 1920 Collegian, but the sophomores won anyway. The platform was a "veritable bower of floral beauty." High in the background, in the freshmen colors of orange and black, was a long staff bearing a strain from the freshman chorus.

The scene has changed, but the song is the same. Alums will at least recognize that.

No Girls But Tremendous

Great War Novel Adapts To Nation-wide Hit Show

By SHARON DAVIS

Mutiny didn't go out with the pirates after all, it seems, for one of the most exciting dramas ever written, "The Caine Mutiny Court-Martial," deals with this very act.

ONE OF the finest novels to come out of World War II, Herman Wouk's book was adapted to the theater and played to capacity audiences on Broadway for three years. Since then, this magnificent drama has become more and more famous as productions are staged throughout the nation.

Eighteen men will portray the intense drama on the Fine Arts stage next Thursday and Friday at 8 p.m. Comments Al Stevens, member of the cast: "Even though we haven't got any girls in this play, the whole thing is just tremendous!"

To briefly sketch the plot, the story centers on young Lt. Maryk, played by Gary Kranenberg. Maryk is being tried by a Navy court-martial on the charge of inciting mutiny on the USS Caine, a World War II cargo ship, upon which he was second-in-command.

DON SCHUSSLER, as Captain Queeg, the Caine's skipper, portrays a man both feared and hated by his crew. Charged by Maryk and his other officers as being insane and unfit to command the ship, Queeg experiences the disgrace of a rebelling crew. Upon returning to port, Maryk is arrested and indicted as leader of the mutineers.

The purpose of the tense drama which ensues is to determine whether Maryk's act was justified. Is Queeg really insane? Question arises as members of the crew testify, giving conflicting evidence. Excitement builds as the suspenseful climax approaches. What will be the jury's decision?

Truly well worth an evening's entertainment time, "The Caine Mutiny Court Martial" is a true dramatic triumph.

Student Participation Drops; Glee Becomes Less Noble?

By BARBARA McPARTLAND

"To Glee or not to Glee — that is the question." According to the results of our unofficial galloping poll, Glee becomes less noble to the minds of students each year as they move toward graduation. Generally the percentage of student participation drops within each class every year.

THE ONLY class that hasn't recorded a drop is the freshman class. Two hundred frosh are singing tomorrow night — 64% of the 314 class membership.

Fifty-seven per cent of the sophomores turned out for Glee last spring as freshmen. Serenaders this year total 102 class members, or 40%.

THE JUNIORS rallied 62% strong in 1958, 42% were out last year, and 45% are 1960 Glee banner hopefuls.

Class of '60 had 65% participation in 1957, 52% turnout in 1958. Last year 46% of the total class enrollment marched, and 40% are on the senior Glee list this year.

DO THESE figures reflect a general disenchantment with Glee as songsters gain a more "sophisticated" outlook on life? If this is the case, the juniors are entering a second childhood, for their percentage of participants went up this year. (Perhaps an important reason for their hike in interest is the Glee banner they carried away last year.)

Jobs, conflicts and classes are standard excuses given by delinquent class members. As Glee week progresses, some decisions to abandon ship are made in the small hours of the morning when a bed seems more worthwhile than a banner.

Dark, gloomy predictions of the Death of Glee drift around every spring, but enthusiastic freshmen find Glee week new and exciting and traditionally turn out in hordes. Glee may be with us until Willamette university figures out a way to avoid having freshmen.

'The Sermon'

Carl Hall, Willamette artist in residence, will have a poem represented in the forthcoming "National Poetry Anthology" of the National Poetry Association of Los Angeles, Calif. Hall's poem, "The Sermon," was one of 400 selected from 8500 entries in a national contest for teachers, professors and librarians.

By CARL HALL

Thrust of teazels taunt and stiff,
Candelabras with solidified flame
That knew no altar nor worship less
We give virtue to lame earth; this
Was hallowed ground with cut crown
Except of plant in pews of bur
Where webs illumined to decay
The unignitable frictions
Of all the plant pulverizing mornings.

The flames were not hot nor red
Nor of light but of the relentless night
Of diminished heights at bay, the reach
Of blackened candles rubbing away
Wick and bur of fields neglect
Beside suicidal rows of corn
In their worshiped barb-wired dominions.

Dear Ed

DEAR EDITOR:

For years the women's living organizations have been operating on the demerit system. And for years objections have been raised by women who have felt they should not be subjected to such restrictions. And yet, there remains a need for some form of discipline. A large group of females living together constitutes no Utopian society. The demerit system, for those who are unenlightened, distributes equal punishments for committing crimes which have been considered to be of equal gravity.

However, now we women have been informed in gentle manner that those offenses which have previously been considered equal suddenly are not. Thus if one individual makes "inconsiderate and unnecessary noise" she is deserving of one demerit, but if she "plays cards or studies in the smoking room," the fiend (de) merits five. It is lovely that our supervisors have been perceptive enough to make these subtle distinctions; otherwise we might have never noticed.

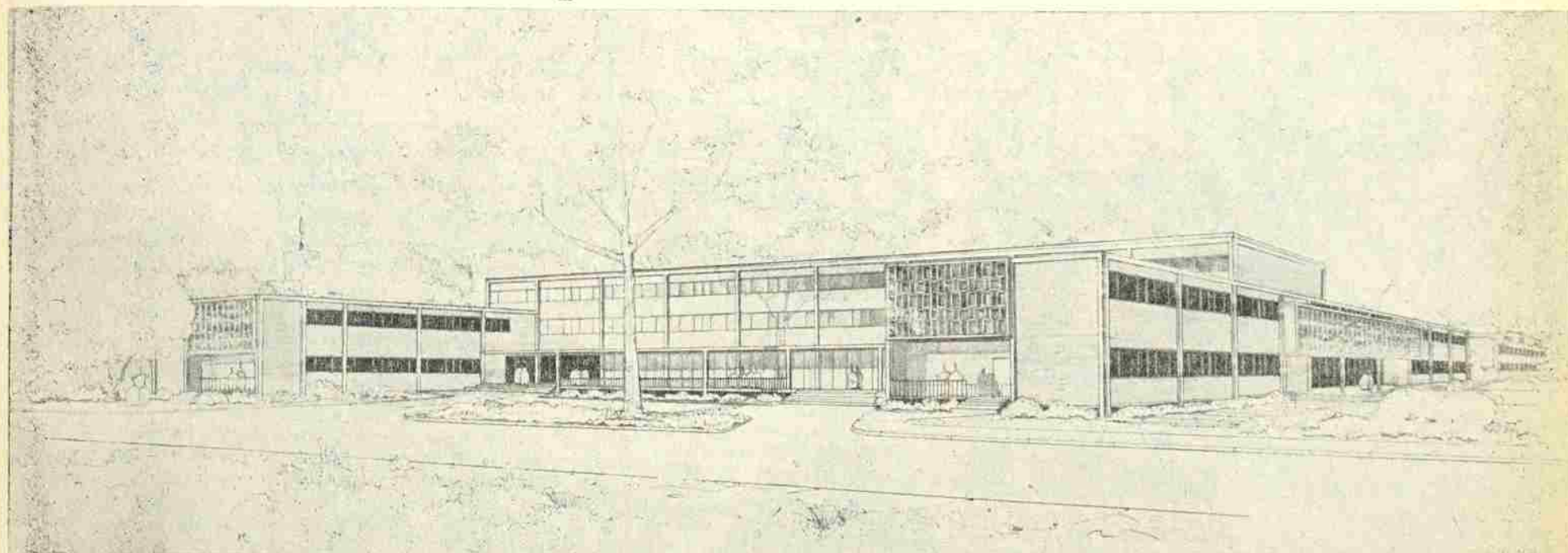
Carol Kirschner

DEAR EDITOR:

Why was the ladder leaning on the cross? Why were there students who were dissatisfied with the final lecture, "Expecting Godot"? Why are there students who prefer a reading such as "God is Dead" to a reading which is not an entity within itself? Why are there students at Willamette who are more interested in the answer they find in a textbook than in the answer they find in their minds? Why are there no students who will complete what is said or done in a work of art, in a lecture, in a test, with their minds and use the process of completing as knowledge? What are the scholastic standards of Willamette university?

Sincerely,
Bob Bennett

Architectural Plans Completed For Willamette's \$1,275,000 Men's Dorm



Styled in Modern Design, Will Accommodate 240 Men

Although WU's new men's dorm will be styled according to the latest in contemporary design, it will also be built so as to complement the rest of the campus architecturally. The structural frame of the building will be emphasized with exposed concrete frames.

ARCHITECTS EXPLAIN that this technique is modern and economical. The emphasis on the framework columns will tie in with other campus buildings which stress the frame of the windows and doors. The new dorm which will provide housing for some 240 men will face south.

The building will be designed similar to the H shaped construction of Baxter hall and a circular drive and parking area will be provided adjacent to the hall. To make room for the new structure, Chresto cottage, South hall and the tennis courts will be removed.

The tennis courts will be relocated close to the new dormitory and border on the Mill stream. The new dorm will have four dining rooms, one each

in the social unit wings and one in the central section and another for the freshman wings.

THE LAST TWO will be joined by folding doors that can be opened to accommodate 190 men. Food served in the dining rooms will be prepared in the central university kitchen in Baxter hall and transported to the new hall in portable steam tables.

Food will be dispensed from a central kitchen. An innovation will be special sleeping rooms in the wings reserved for the social organizations. Men in the dormitory wings, however, will sleep in their rooms. Study rooms will include furniture and closet space for two men.

ADEQUATE LOUNGE, storage and laundry space is to be provided in all wings according to the plans released from the office of Chuck Ruud. The building will be reinforced concrete 34 feet high in the center section.

The east-west axis will measure 230 feet and the north-south section 206 feet. The exterior will be faced in brick and will include decorative screening.

Proposed architectural plans for the new \$1,275,000 men's dormitory have been drawn to latest contemporary design, but architecturally complement the rest of the campus. The dorm, to provide housing for 240 men, will face toward the south on land south of the present Baxter hall.

Author Willie Snow Ethridge To Give Atkinson Lectures

Willie Snow Ethridge, author, humorist and world traveler, will deliver the Atkinson lectures here March 15 and 16, President G. Herbert Smith announced.

AUTHOR of a number of best-selling accounts of travel abroad, Mrs. Ethridge returned in 1958 from a trip to Russia. Two of her three lectures at Willamette will deal with her experiences in the Soviet Union.

On March 15, at 11 a.m., the lecture "Pardon Me For Being Personal, But" will be presented and at 8 p.m., the lecture, "Russians Are People," will be delivered. On March 16, Mrs. Ethridge will speak on "The Importance Of Being Trivial" at 11 a.m.

She is the author of "This Little

Pig Stayed Home," "As I Live and Breathe," and "I'll Sing One Song." More recently she described her Russian journey in "Russian Duet."

WILLIE SNOW, as she is often known, is the wife of Mark Ethridge, editor and publisher of the Louisville (Ky.) Courier-Journal and Times. When Ethridge was serving on the United Nations commission to the Balkans and again to the Middle East, Mrs. Ethridge went along and recorded her impressions of the countries they visited. Two books, "It's Greek to Me," and "Going to Jerusalem," were the results of these trips.

There will be no admission charge for the lectures and the seating will be on a first-come basis.

WU to Host Methodist Youth Group

Registration will begin for the 1200 high school students who will be on the campus at 8:30 tomorrow morning for a one day Methodist Youth conference. The day begins with a combined workshop service and orientation program which consists of four questions.

The first, "Why believe in God?" will be answered by Rev. Joe Harding of Trinity Methodist church in Salem. The second, "Why get to know your neighbors?" will be presented in the form of a skit.

The third question, "Why should I be interested in national problems?" will be discussed by a panel consisting of Willamette's president G. Herbert Smith, Oregon Secretary of State Howell Appling and the Rev. Lawrence Nye, pastor of a Portland Methodist church. The last question, "Why should I be interested in international problems?" will be debated by two Willamette students.

Dinner at the Marion hotel follows the afternoon program and "The Sign of Jonah," presented by Willamette students on the Fine Arts stage will top off the day.

"Having a spiritual experience as well as a good time is the object of this conference," said Bruce Rose.

Former Student Dies In Vienna

Wayne DaMetz, former Willamette student, and son of Mr. and Mrs. Ralph DaMetz, died this week in Vienna, Austria. DaMetz was stricken with a blood disease a few months ago and was hospitalized last week.

DaMetz was a political science student at Willamette in 1958 and was studying for a career in the Diplomatic service at Vienna.

Class Members Predict Win

With opinion running high around campus on a question debated at Willamette annually, it was deemed logical to get a cool-headed report from a member of each class on the question—"Who's gonna win this Glee?"

By GAIL DURHAM

The class of '63 will win at Glee. Looking at it subjectively this is the way I see it: First of all, it's our turn! Three years have gone by since the freshman class has won. This year's freshman class has all the enthusiasm and cooperation that is needed for a win. The audience will see a truly fine technical performance on Saturday. Of course, the mechanics of marching and presentation don't by themselves make a winning combination.

Bennett New March Rotarian

Robert Bennett, a senior majoring in English and senior scholar of that department, was elected by student council as the Rotarian of the Month. Bennett will now attend the weekly luncheon meetings of the Salem Rotary club.

Bennett has been announced the winner of a National Defense Education fellowship to the University of Pennsylvania for work towards a professorship in English. Last year he was the recipient of the William Wallace Youngson scholarship.

He is a member of Phi Sigma Iota, foreign language honorary, and a member and president of the Creative Writing club. He has received the Creative Writings club award.

Besides being a member of the honors seminar, Bennett has participated in the athletic side of campus life by being on the tennis team for the last two years.

He served as student pastor in a small Methodist church outside of Salem in his sophomore year.

It takes a song, a song that can stand by itself and able leaders like Sue Lewis and Jo Taylor. Both of these girls have the complete backing and cooperation of the class. This is why I say: "Class of '63 will win at Glee." That's the way it will be!

By BARBARA GILDEA

If there is a doubt in your mind who will win Glee, ask any sophomore. Their calm assurance comes from the knowledge of the tremendous depth of sentimental feeling expressed in their song. The haunting, enchanting melody, coupled with the tender words of love, make it the perfect serenade. Besides the song, there is the sophomore class to sing it to add to its beauty by faultless interpretation. Their maturity and experience, plus practice under the tremendous leadership of Tom Hemingway, cannot help but give them pride and confidence. Undaunted by the misfortune of the past that merely functions as added incentive, the sophomores will emerge gloriously victorious!

By DARBY, GLADWIN and MEEKER

The combination of red, white and blue seems to be the winning colors for this year's Freshman Glee. What is the theme for this year's Glee? Serenade. This is one thing no other class has been able to apply in their presentation. One class forgot their candelabra, another forgot the notes for their staff, still another left the most important fifth point off their star. The remaining class will not be heartbroken this year, since this class knows well the trail to victory. While the stars are shining and the piano is playing, Dan Cupid's arrow will strike the winning glow. Love, pertaining to the young and the fair, is shown in the greatest spirit

when spring glows in their hearts. One of the important aspects of a serenade is the feeling that is exhibited by the melody of the music. As it is seen by the authors of this article, only one class can meet the standards of having a beautiful, flowing melody that has a feeling of love to be presented to the listening audience.

By RALPH LITCHFIELD

Thoughtful silence prevails in the meeting halls of the tiny band of venerable sages which compose the class of 1960. Thoughtful silence prevails among the 60 individuals where, at one time some 225 voices would have rocked the foundations of Waller with their cries. Why are we silent? Why do we think instead of shout?

Many years ago we too were a boisterous band of freshmen. That year we demonstrated the quality which was hidden among our unpolished gems by winning Freshman Glee. In the years since that time, however, we have learned through bitter experience that even though every single student knows that his class can not possibly keep from winning, it does not work out that way.

Let it not be said, however, that these past years have been spent to no avail. Like a tiny underworld we have been preparing for the day

when we shall once again rise to power. The superb qualities of our marching have been honed to a razor sharpness by years of ROTC drills. Voices have mellowed. The fabulous talent of our front row may have diminished in quantity but its quality has only been brought to a fine polish by the abrasives of time. An intense screening process has reduced our number to the point where no weak link remains in our chain. Now, like an awakening giant, we are mobilizing.

"Who's going to win Glee?" "Wait," says the thoughtful senior, "and see."

What Do You Say?

Chairman Barbara Royer has announced that an evaluation of Christian Resources week is being made and that student opinions are in demand. Please give your comments to the chaplain of your living organization or a member of the CR week committee.

'60 Glee Records On Sale, Top Tone

"Cool and clear — the swinging sounds of '60 Glee" will be available with a new high quality of sound not possible without the new Ampex recorder to be used, says Tom Dunham, chairman of Glee record sales. These records will be directly taped, unlike last year when they were taken from the radio tape, added Tom.

John Steiner, Dexter Maust and Dunham will be taking orders for records at the program, with coupons stapled inside programs for write-in orders. Record orders will be taken daily at Eaton hall and at convocations and chapels for the next two weeks.

Songfest On Radio

Glee will be broadcast live Saturday night on KSLM under the sponsorship of Stevens and Son jewelers and will also be rerun in full on Sunday night at 7. Carl Ritchie, professor of English and radio-TV at Willamette, who has narrated this program since he was a student of the university, will be aided this weekend by students Jon Griffis and Ross Stephen.



Law students prepared for their stations in life at a practice trial held in the Willamette law school. Law professor Courtney Arthur presided as judge as WU undergraduate Karen Myers took her place on the witness stand. In the foreground is an unidentified contemplative law student. (Photo by Bruce Black.)

NSA Visits Europe

Three new summer study programs for college students to Paris, Florence and Vienna are being announced by the west coast office of the National Student association.

THE GROUPS in the European cities will have an opportunity to combine language studies with a study of the literature, music, politics, history, agriculture, architecture, economics and theater of the country. The students will also travel for several weeks within the country of study, will live with local families and will meet with members of local governments, religious leaders, educators and artists.

After a six week stay in one country, a trip is arranged for the group to another European country of interest. The French group will visit Italy, the Italian group will visit France and the Austrian group will visit Italy and France.

THE NSA "Study-Travel" groups give a student an opportunity of getting to know one country and an opportunity to study a foreign language in the native country. The language classes will be arranged on the beginning, intermediate and advanced level.

The total cost of the all-summer program is \$795 which includes trans-Atlantic transportation and all expenses in Europe. The National Student association is a non-profit, educational organization serving the American student community.

For further information write: U.S. National Student Association, "Study-Travel" department, 2161 Shattuck Avenue, Berkeley 4, Calif.

DG and Pi Phi Add Names To Rosters

Delta Gamma and Pi Beta Phi held the last initiation ceremonies of the women's Greek groups as 14 and 15 members, respectively, were added to the chapter rosters.

Answering the roll call in the Delta Gamma chapter room for the first time are Carol Bliss, Joan Benson, Sally Bowe, Gail Durham, Linda Edwards, Joan Taylor, Joan Douglas, Anne Martin, Jeanne Lieske, Marcene Powell, Roxine Huntley, Nancy Johnson, Alice Hamilton and Beth Wyatt.

Latest members of Pi Beta Phi are Trish Evans, Lucy Holm, Joanne Gay, Susan Lewis, Thelma Ray, Linda Simonsen, Judy Triplet, Mary Ann Wright, Judy Cook, Joy Davis, Sandra Cline, Jane Yaple, Sandra Stageberg, Susan Keech and Elizabeth Keyser.

Pinnings

Elaine Buckinger, junior Pi Beta Phi to Ellison Chandler, Sigma Alpha Epsilon junior.

Marylhurst Hosts Clinic For Engaged

An invitation to engaged couples is extended by the Marylhurst college Sodality and Home Economics club to attend their Marriage institute during the month of March, beginning tonight. The series of four lectures will be held each Friday evening at 8 p.m. in Flavia salon on the Marylhurst campus.

Divided into four lectures, the program will be introduced with, "So You Want to Get Married," by a Catholic priest speaking on the sacramental and moral aspects of marriage and engagements. A young couple will speak on "The Test—The First Few Years," which will emphasize the personality adjustment and economic problems of marriage.

A doctor will be scheduled for the third lecture. His topic will be "Christian Design for Sex." Concluding the series will be the discussion of the problem of alcohol in marriage with the lecture, "Obstacles to Success and Sanctity in Marriage."

Panhellenic Sets Rush Meeting

Panhellenic president Elaine Buckinger announces that spring rush for Willamette's five sorority groups will be held next Thursday, Friday and Saturday. Women interested in participating in rush are urged to sign up in Dean Ewalt's office on or before next Tuesday.

A rush meeting will be held in Lausanne lounge Tuesday from 6:30 to 7 p.m. for coeds interested in rushing. Those who are uncertain as to their participation may attend the meeting also. Rushing procedures and the three-day calendar will be explained in the meeting.

Diamonds in Dorm

Atmosphere in candlelight in Doney hall surrounded the news of the engagement of Nancy Nash to Dave Scott. A decorated cake provided by Miss Nash was shared by Doney residents.

A TRANSFER student from the University of California at Davis, Miss Nash is a junior, majoring in pre-law. Scott, a senior from Beverly Hills, has participated in musical activities while at Willamette and headed the Plaidmen singing group.

The couple plans a summer wedding in Miss Nash's hometown of Sacramento. Miss Nash will continue her schooling and Scott will begin graduate work in anatomy and physiology.

SHE WORE her ring and the news spread without a formal announcement. Pat Cleek verified the guesses and announced her engagement to Rex Domaschofsky.

From Portland, Miss Cleek is a junior living in Doney hall and a major in the economics department. Domaschofsky was a member of the senior class at Willamette when he was called into the service. He is a physical education major and resides in Dallas.

The couple plans marriage in June, 1961 when Domaschofsky returns from Korea.



Nancy Nash

HOLLYWOOD
2005 N. CAPITOL STREET
Ends Sunday, March 6
WILD STRAWBERRIES
OPEN 7:15

3 Decks! 2 Patties!
and a slice of CHEESE!

That's a

**BIG JOE
HAMBURGER!**

EAT AT . . .

SLOPPY JOE'S

Social Scoop

... by ROSEMARY STEPHENSON

ICY INKLINGS

Chi Omegas offered their services as washers-of-cars at the AWS auction and were purchased by the Sigma Chis for the purpose of leaving the men's four-wheeled machines bright, shiny and spotless. The young women began their industrious project on a particularly cold day last week. The lesson was learned; cars are not washed when the temperature is low. The coeds presented their employers with their vehicles, newly painted with sheets of ice.

CAMPUS CRIMINALS

The traditional week of kidnapping in connection with every annual Freshman Glee began in full spirit preceding the challenge assembly on Tuesday. Freshmen kidnaped sophomore class president Hugh Stites and the revenge was something slightly out of the ordinary. Sophomores mapped a detailed strategy to kidnap freshman song leader Sue Lewis. After an all-campus serenade, Pi Phi sisters (members of the sophomore class) abducted Miss Lewis and saw to it that she spent the night locked in an upstairs room at the chapter house. Explanations to the captive of the previous approval of Dean Ewalt and Doney housemother, Miss Lois Latimer, failed to soothe the song leader's ruffled freshman spirit.

WU SPORTS WRITER CHEERS L-C

On-lookers may have thought COLLEGIAN sports writer Jack Rasmussen out of his mind at last week's Willamette-Lewis and Clark game but such was not the case. He had made a bet and all was not going toward his favor. Rasmussen bet Eugene Kitzmiller, of Statesman Commercial printing, that the total number of points to be scored in the game would be 174 while Kitzmiller bet 164 points.

One minute was left in the game and the total number of points was 162. Several personal foul shots suddenly stopped the clock. The last few seconds in the game saw Rasmussen in the bleachers cheering his head off for Lewis and Clark to make a timely basket. LC's Bob Fox did just that and the total 173 points brought WU's exuberant sports writer to his feet with his new claim to 50 cents.

For Campus - For Dates



460 State Street

Charge today - Take time to pay

Gay's
fine
candies

for any occasion

135 N. High

... Stop at the New

**Rose Gardens
Motel**

The Capital's Newest and Finest

On Highway 99E - in North Salem

3350 Portland Road Salem, Oregon
Phone EM 2-7787 S. Hoiland, Mgr.

EL SINORE EM 2-5798

March 4-8

"ON THE BEACH"

Gregory Peck, Ava Gardner,
Fred Astaire

Starts March 9

"NEVER SO FEW"

Frank Sinatra, Gina Lollobrigida

GRAND EM 2-8284

March 4-6

"CASH McCALL"

James Garner, Natalie Wood

Cohit

"GIRL'S TOWN"

Mamie Van Doren

Extra:

"JUSTICE and

CARYL CHESSMAN"

Starts March 10

"STORY ON PAGE ONE"

Cohit

"THE SILENT ENEMY"

PAPER BOUND BOOKS and MAGAZINES

**Wydell's
BOOK
SHOP**

EM 2-7627 • 469 State street • Salem, Oregon • Udell J. McManus

IMPORTED
WELLINGTON BOOTS

SCOTCH CORDOVANS

DESERT BOOT

and of course
SHOE REPAIRING

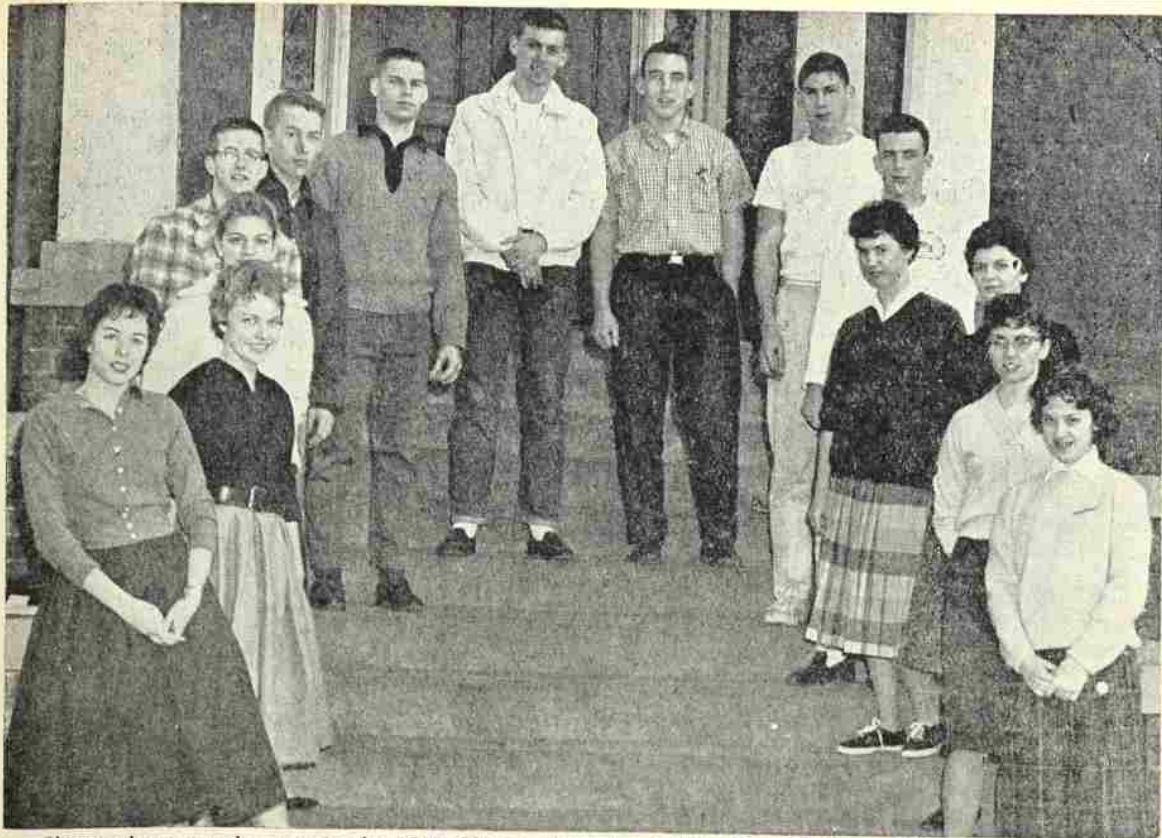
10% DISCOUNT
with Student Body Card

**Jim's Shoe
Service**

TWO LOCATIONS

183 High NE

1295 12th SE



Shown above are the cogs in the 1960 Glee machine, headed by Glee Chairman Glen Downs. These freshmen led the committee work for this year's Glee. The cogs are (left to right), Virginia Moran, Merle Gillespie, Sue Whitelaw, Max Merrill, John Abele, Tom Dunham, Glen Downs, Doug Simon, George Douglas, Buck Hemingway, Joanne Tacker, Judy Triplett, Lynne Higgenbotham and Joy Davis. (Photo by Bruce Black.)

Straub to Keynote Mock Conference

Oregon Democratic party chairman Robert Straub was voted keynote speaker choice for the 1960 Mock Democratic convention during a pre-convention planning meeting held at Willamette last Sunday.

Straub accepted the offer in a letter to organizing chairman Pete Blewett. Straub said, "It will be a pleasure to speak to the group, I'm sure the political interests of the students will be sparked by the convention."

Representatives from 12 Oregon colleges selected Straub opening speaker of the quadrennial event, which will be held on the Willamette campus and in the Capitol building April 22-23.

STATE SENATOR Monroe Sweetland, a delegate to the 1952 and 1956 Democratic conventions, addressed the national committee planners as they gathered to formulate plans for the scale model presidential nominating convention.

"The experience gained from this mock convention will familiarize college students with the historic political processes by which America selects its leaders and develops

its great national issues," Sweetland said, "and will help prepare our young people for their role as the leaders of tomorrow."

The convention will draft a Democratic Party platform at its April meeting, and will "nominate" a candidate for the presidency and vice-presidency of the United States.

AMONG THE suggested topics for platform planks to be formulated by the convention delegates are the problems of civil rights with respect to segregation and the constitutionality of Congressional investigation committees, the National Aid-to-Education program, decreases in Armed Services personnel, and other topics, many with specific applicability to college students, but all of national interest.

The topics for the platforms have been assigned to each school participating in the convention, and a formal statement of majority and minority planks will be submitted to the national rules committee by March 27, in preparation for the final discussion and presentation at the convention.

BLEWETT reminded delegates from the Oregon schools of the purpose of the convention. Said Blewett, "This convention is to be an active expression of political interest on the part of Oregon students. Although the convention will serve as a means of bringing political science to life, we must keep in mind the fact that we, as the students of today, will be expressing our views as the citizens, leaders and representatives of tomorrow's United States."

Compliments of
ALIRMA MOTEL
3645 Portland Road Salem, Oregon
Phone EM 2-4510

Glee Banner Under Guard

A few moments before the somewhat drawn-out announcement of the winner of Freshman Glee competition, the famous Glee Banner is marched before the waiting masses as added impetus to the charge for the stage.

The trembling freshman girls who bravely hold the flag until the very instant before first place is announced gratefully surrender their places of honor to the male set lest they be trampled in the ensuing stampede.

Jerry Whipple, Alumni director, watches over the coveted banner until a delegated member of the freshman class comes to call for it. The present banner is not the original, as that one suffered at the hands of over-eager victors in 1944. Following the fight for the victory-symbol on Glee night, the banner is returned to Mr. Whipple to be kept until the next year's contest. All participating members of the winning class receive a miniature replica of the banner as a reward for their efforts.

NORTH SALEM MOTEL
2673 Portland Rd. N.
DAILY OR WEEKLY RATES
EM 4-0404

CHINA CITY Restaurant
CHINESE AND AMERICAN FOOD
★
Open
Weekdays & Sundays
12 Noon to 1 A.M.
3555 South Commercial
Phone EM 2-2117

LEAD A CLEAN LIFE
COME TO
KENNEDY'S CITY CLEANERS

Long Range Jobs Offered

At this time of the year, the focal point of the placement service at WU is senior job placement, but the placement service in the personnel office is a year-round operation and serves undergraduates as well as graduating seniors and alumni.

ANY STUDENT who wants part time employment fills out a card in the personnel office stating qualifications, hours available and other information of interest to employers.

Deferment Quiz Offered By Drafters

One of the surest signs of spring is the annual College Qualification Test given draft-age college students to help determine whether they will spend another year in school or go off to campaign in khaki. This year's test, which will be given in Salem on April 28, will be used in combination with grades and administrative reports to determine who is to be allowed to finish school before taking part in the Universal Military Training program.

Deadline for application to take the deferment test is April 7, but the Educational Testing Service, the organization which makes up the CQT as well as the College Board examinations, urges eligible students who intend to take the test to file applications right away.

Application forms may be obtained from the local board offices on the second floor of the Armory. The forms, which are accompanied by an information bulletin, must be filled out by the applicant and mailed to the Selective Service Examining Section of the Educational Testing Service, P. O. Box 586, Princeton, New Jersey.

Although the tests may be taken in Salem, the results will be referred to the local board having jurisdiction over the student, where they will be used in considering his deferment.

Employers also fill out a card stating job specifications, pay and other items of interest to prospective employees.

Placement office personnel attempt to match positions available with students applying for work. On-campus positions are open to students, such as work in the library, dining halls, administrative offices and the health center.

QUALIFIED STUDENTS are appointed to various positions in the living organizations also, upon recommendation of the personnel deans. The various department heads and officials on campus cooperate with the placement office in selecting and placing students in on-campus positions.

All graduating seniors are asked to participate in the program. Reference forms are given seniors to be filled out and sent to the personnel office by persons who know the students, and the students themselves complete a form containing important information any possible employer would need to know.

ON-CAMPUS INTERVIEWS are arranged between students and employers through the placement office.

Speech Contest Title Taken by Barton

Richard Barton, Willamette sophomore, won first place cash prize in the annual State Experimental Speaking contest held recently at the University of Oregon. Barton's speech was a review of Vance Packard's best-selling book "The Status Seekers." He was required to deliver an impromptu answer to questions concerning the book after his formal presentation.

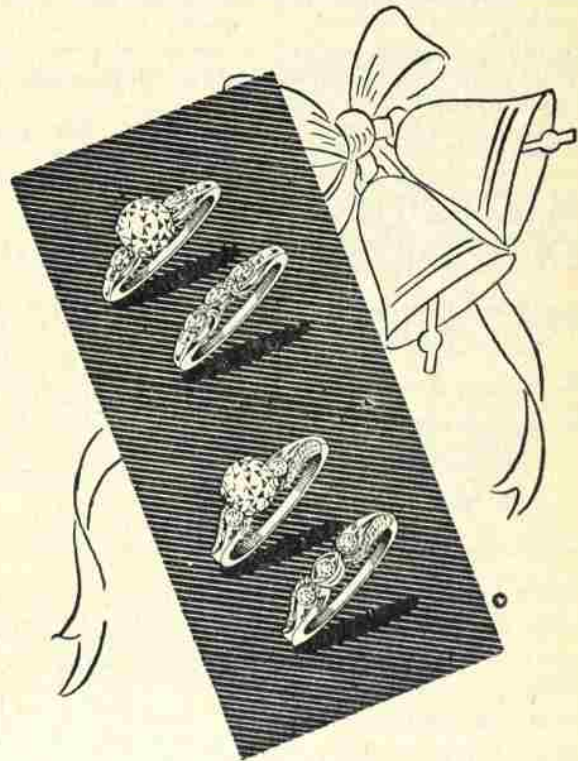
Barton competed with students representing other colleges and universities who are members of the sponsoring organization, the Inter-collegiate Forensic association of Oregon.

Runkel Talks to Execs

Dr. Howard W. Runkel, professor of speech, will be principal speaker at both afternoon and evening banquet sessions of the Armco Steel corporation's retreat for junior executives today and tomorrow.

The retreat, to be held at the Sands hotel, Gearhart, Ore., will be attended by executive and sales personnel of the Pacific Northwest area. The Armco corporation employs more than 55,000 persons in plants located all over the world.

Al's Barber Shop
Haircut \$1.25
1347 State St.



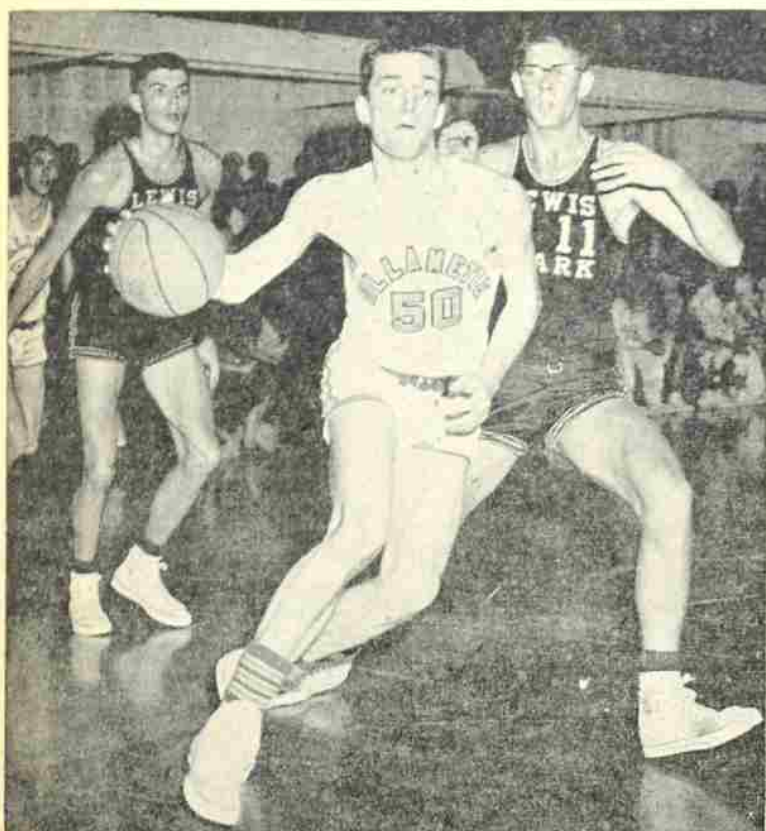
Soon the Wedding Bells?

Then your thoughts, no doubt, are focused on the all-important rings - the ones that will tell the world of your engagement and wedding. Do have them match - as these beautiful sets. Above: marquises are the motifs. Below: round-cuts lend brilliance.

BRIDAL PAIRS FOR AS LITTLE AS \$100
NO INTEREST OR CARRYING CHARGES

Store Hours
9:30 to 5:30

Stevens & Son
CERTIFIED GEMOLOGIST OF THE AMERICAN GEM SOCIETY



Fidel Gaviola has the look of a determined Bearcat as he drives past Roger Fleck (11) and Bob Fox in Willamette's 96-77 win over Lewis and Clark last Friday. (Photo by Terry Shuchat.)

Cats Nab NWC Crown

With the aid of a big spurt late in the first half, Willamette wrapped up the Northwest Conference basketball title in convincing style last Friday, beating Lewis and Clark, 96-77.

This was the third straight season WU has won at least a share of the NWC crown, and the seventh time the Bearcats have been champions or co-champs under coach John Lewis.

EDDIE GROSSENBACHER, in scoring 18 points, finished a clean sweep of Jason scoring records, breaking Doug Logue's season total mark by winding up with 490 for the year. Gross also holds high single game and career laurels.

For a while it appeared the Pioneers would throw a roadblock into the Bearcats' title drive, as they built up a quick 5-0 lead and held

an advantage throughout the first ten minutes.

STILL STRUGGLING with Lewis and Clark leading, 22-18, Willamette suddenly caught fire. After notching the count at 26-26, the Jasons scored five more quick baskets to lead, 36-26.

The visitors seemed to be shaken

FINAL NORTHWEST CONFERENCE STANDINGS

	W	L
Willamette	12	3
Linfield	11	4
Col. of Idaho	8	7
Whitman	7	8
Lewis & Clark	7	8
Pacific	0	15

by this outburst as they forced poor shots at the hoop, made bad passes, and failed to defend against WU's successful fast breaks.

By halftime, the Bearcats held

Bearcats Scratch Linfield, Earn Trip to Kansas City

By DAVE KITCHENER
Willamette's determined hoopsters held on grimly to defeat arch-rival Linfield, 70-64, in a tense battle at South Salem high school last Wednesday. The win sends WU to the NAIA finals in Kansas City.

In spite of the absence of Larry Lynn, an injury to Hisao Sato and the elimination of Jim Litchfield on fouls, the inspired Bearcats used good teamwork and took advantage of free throws to sink the Wildcats.

CENTER BUZ Wilfert got the Bearcats off to a 2-0 lead with a jump shot, but Jack Riley countered with one to tie the score. For the next seven minutes the teams continued to trade baskets, with Grossenbacher, Litchfield, and Gaviola providing the scoring punch.

When center Gene Carlson tied the count at 12-12 with a jump shot, Willamette opened its first big surge of the night, scoring eight straight points to lead, 20-12.

FIDEL GAVIOLA hit on a layup after a fast break, came back with another, and Jim Litchfield

tallied on a tip-in and layup, while Wilfert added a free throw.

The Bearcats had their lead hiked to 27-18 with eight minutes left in the half when Grossenbacher hit on a set shot. But then the Wildcats stormed back, with Ron Phillips, Bob Close and Caryle Goetze tallying to close the gap to 27-25.

However, at this point Sato went on a scoring rampage, netting eight points and timely rebounding to give the Bearcats a 42-33 halftime lead, much to the delight of the Jason fans.

THE SECOND half opened as a different story, with Willamette failing to score for over four minutes while Ron Phillips scored three quick baskets.

After a free throw by Gaviola

and a set shot by Sato, Linfield, led by Phillips and Jack Riley, hit a sizzling shooting streak to forge into a 49-45 lead. Riley's jump shot had knotted the count and a long set shot by the 5'8" sensation had put his mates ahead.

WHEN COACH John Lewis called time out, the stunned Bearcats finally collected themselves, hitting on two single free throws and a Sato jumper which again knotted the count. With eleven minutes left, Sato put the Cats back ahead, 51-50.

Although WU never relinquished this lead, they had some anxious moments. One of them came with 7:40 left, when Sato suffered a painful leg injury which sidelined him for the game. At the time Willamette led, 57-54.

WITH 2:45 LEFT, Bob Close put the Wildcats within one point again with two free throws to make the score 61-60. However, Willamette went into a semi-stall, drawing free throws and sinking most of them. Canning five charities in the last two minutes was Tom Weston.

LEADING SCORER for the winners was Grossenbacher, who canned 20 points. Sato tallied 16. For Linfield, Riley and Phillips were high with 16 each.

Free throws killed the Wildcats, as they converted only 14 of 23 while Willamette hit on 24 for 35.

SAE Bowlers Capture Lead; Sweeney Hot

The SAE No. 1 bowling squad continues to hold a narrow lead over both the Arnies and the Phi Delt No. 1 squad as the tight mural bowling race continues. Only one and one-half points separate the top three teams.

JOHN SWEENEY, Phi Delt No. 1 veteran, established two individual records in recent competition. Sweeney grabbed the high series mark by toppling 600 pins in three games. The following week, the senior kegler scored a 250 game to capture top spot in that department.

The Arnies still hold the high team game with 732, while the Phi Delt No. 1 squad leads in the team series department at 2060.

STANDINGS

SAE No. 1	47½	16½
Arnies	47	17
Phi Delt No. 1	46	18
Sig No. 1	40	24
Beta No. 1	38	26
Beta No. 2	35½	28½
Foreigners	35	29
Phi Delt No. 2	24	40
Baxter No. 1	22	42
Sig No. 2	21	43
Baxter No. 2	19	45
SAE No. 2	9	55

**ACE'S
BARBER SHOP**
3 BARBERS
1256 State Street

PHONE EM 3-1677

20 UNIT COURTEL

DOWNTOWN COURTEL
3 BLOCKS FROM BUSINESS DISTRICT
PHONES IN ROOMS

MR. & MRS. TOM DALKE, OWNERS

495 LIBERTY STREET, SE

SALEM, OREGON

**WIEDER'S
SALEM LAUNDRY**
TRUCLEEN DRY CLEANING
With Sta-Nu Finishing

Wieder's Swift Shirt Service

Leave it at 10 — Wear it at 5

"FREE PICKUP AND DELIVERY"

263 High St. SE

Phone EM 3-9125

Sparks Greets Tennis Veterans

By JUDI DANA

New sports make their debut as the basketball season ends for another year. Among these new sports is tennis, coached by Les Sparks. Conference competition will begin on April 13 for the netters when they meet the University of Oregon at Eugene. On May 13 and 14, the racquetmen will meet in Portland for the Northwest conference tournament.

Returning to aid the tennis team in their fight for victory are Tim Campbell, Dale Daniel, Bob Bennett, Gary Winner, Glen Durham and Bill Richter. All other tennis players interested in competing in

the tournament should attend the tennis meeting on March 7, at 4 p.m.

1960 TENNIS SCHEDULE

Apr. 15—Oregon	Eugene
Apr. 14—OSC	Corvallis
Apr. 15—Lewis & Clark, Portland	
Apr. 16—Reed	Salem
Apr. 19—Linfield	Salem
Apr. 21—Portland State	Salem
Apr. 26—Pacific	Salem
Apr. 27—OSC	Salem
May 3—Pacific	Forest Grove
May 5—Linfield	McMinnville
May 6—Oregon	Salem
May 7—Portland U.	Portland
May 9—Portland U.	Portland
May 10—Lewis & Clark, Salem	
May 13-14—NWC Tourney	Portland

Skiers Place High

Willamette skiers placed fifth in a field of fifteen teams at the Winter Carnival last weekend. Oregon State won first place in the annual Mt. Hood event.

Gretchen Goodrich, Dick Adams, Jan Stedman and Doug Stevenson made up the Willamette team.

MEMBER BEST WESTERN
MOTELS

**LA VISTA
MOTEL**

Phone EM 2-6792

2990 Commercial St., SE

On Hiway 99, Bus. Rt., Salem, Oregon

MAGAZINE EXCHANGE

Magazines & Paperbacks

We Trade 2 for 1

Monthly Magazines up to 1 year old

Weekly Magazines up to 1 mo. old

Paperbacks, Comics

139 N. High

JAYSON'S

Headquarters for the latest styles in young men's clothing and sportswear.

Use our complete
FORMAL RENTAL DEPT.

SEE THE LATEST!
NEW CONTINENTAL SUITS!



**ABC
Printing Co.**

481 State St. EMpire 3-1882

Dance Programs
Invitations
Stationery
General Printing

We Give S & H Green Stamps

CAPITAL DRUG STORES

TWO CONVENIENT LOCATIONS TO SERVE YOU!

405 State Street

4470 N. River Rd., Keizer

Free Delivery — Free Parking



Larry Lynn
... league's tallest 6' 2"



Ed Grossenbacher
... 3rd straight year



Buz Wilfert
... 1st team pivot

Lynn, Grossenbacher, Wilfert Make All-NWC First Team

Willamette and Linfield ran off with all five all-conference basketball positions in the annual NWC coaches poll. Three members of the championship Bearcat squad earned first team berths while runner-up Linfield placed two players on the 1960 dream team. Four of the five were repeaters from last year.

ED GROSSENBACHER, the record-setting Bearcat captain, made the list for the third time. The senior playmaker set three WU records in his final season and was runner-up in the conference scoring race. Gross has been a starter

All NWC Basketball Squad

1st Team			2nd Team		
F	Larry Lynn, Will.	Sr.	F	Ed Merritt, C of I	Sr.
F	Terry Woods, Linfield	Sr.	F	Roger Fleck, LC	Sr.
C	Buz Wilfert, Will.	Jr.	C	Bob Fox, LC	Soph.
G	Ed Grossenbacher, Will.	Sr.	G	Royce McDaniel, LC	Jr.
G	Jack Riley, Linfield	Sr.	G	Daryle Hill, C of I	Jr.

Honorable Mention: Hisao Sato, Will.; Gene Carlson, Linfield; Don Printz and Dick Ramsey, Pacific; Dave Ackerman and Ted Talbott, C of I; Dick Phelps, Ralph Lillie, Dennie Michaelson and Jerry Johannes, Whitman.

all four years at Willamette. Buz Wilfert nailed down the center slot for the second straight time. The shifty Bearcat center was the only junior to crack the starting line-up. Wilfert will be back to lead the Jasons next year.

FORWARD LARRY Lynn moved up from a spot on last year's second squad. Lynn earned third spot in

the conference scoring race and led the Bearcats in rebounding. The chunky tip-in artist was selected as the most valuable player in the Far West tourney earlier this year.

Jack Riley became the first player in Northwest conference history to make the dream team all four years. The 5'8" speedster led conference scorers for the second straight year.

ROUNDING OUT the first team was forward Terry Woods. The Linfield red-head finished strong to secure his last year's spot.

While Willamette and Linfield fill the first team, third and fourth place Lewis & Clark and College of Idaho dominated the second team. Two seniors, two juniors and a sophomore earned spots on the runner-up squad.

BEARCAT GUARD Hisao Sato received honorable mention. Sato proved especially effective against the high scoring Riley.

Ras Rambles

By JACK RASMUSSEN
COLLEGIAN SPORTS EDITOR

The 1960 Northwest conference season entered the record book as a typical two-team race with a down-to-the-wire climax. Again, the all-important eastern swing was the deciding factor, the Bearcats' two wins on the trip giving them the one game margin when Linfield lost single games to both Whitman and College of Idaho.

Fans who witnessed the two eastern teams' performances in the conference openers against WU and Linfield could hardly have expected either team to provide much competition for the conference leaders, even with a home-floor advantage.

JACK RILEY had a real advantage in winning the conference scoring title over Ed Grossenbacher. The Wilcat guard knew just how many points he needed the last night and went out and got them. It should be noted, however, that Grossenbacher's field goal percentage is well above Riley's.

Vic Adams has decided to give up his basketball coaching chores at Pacific. His Badger ball clubs have lost 37 straight games over the last two years. The veteran Pacific mentor coached his 1957 squad to a first place tie with Linfield but has experienced little success since. Badger teams have earned only one championship and two top-spot ties in Northwest conference action during the past 33 years.

AS A DIRECT OPPOSITE to Adams' record, John Lewis has had amazing success during his 13 seasons at Willamette. Under Lewis, Bearcat basketball squads have won four titles and grabbed a share of three others. This year's championship, the third in a row for the Lewismen, marked the 12th time the Bearcats have won or shared the NWC crown since the conference was established in 1926.

Golfers Practice, Seek NWC Title

Snow covered fairways and frozen greens provided an interesting challenge this week as Willamette golfers began concentrated practice for the coming season. The Bearcat divotmen will be attempting to defend their long-standing conference title, a distinction they've held for 12 consecutive seasons.

Rusty Beaton and Joe Karmos are the only two returnees from last year's fine team. Both were members of the four-man all-conference squad picked at the NWC match held at the Salem Golf club last spring.

Several top freshmen prospects are expected to make strong bids for positions on the six-man playing squad. Jim Allen, junior University of Oregon transfer and a member of the Bearcat basketball varsity, and sophomore Harry Coolidge are among others who will be aiming for starting berths.

Coach Jerry Long's squad faces a 13-match schedule to be concluded by the all-important conference tourney which will be held in Portland this year.

Do You Have a Career Plan?



One of the most interesting and profitable careers in which a young American can invest his future is

FOREIGN TRADE
or
FOREIGN SERVICE



The American Institute For Foreign Trade offers you graduate-level training for a satisfying and lucrative career abroad. Advanced degrees offered.

A representative will visit the Director of Placement on Tuesday, March 8th, from 9 a.m. to noon.

Woodle Tops Jayvee Scorers

Bob Woodle of Portland is Willamette University Jayvee basketball scoring champion this year.

Woodle collected 124 field goals and 44 free shots for a total of 292 points. His closest rival was teammate Mark Hattenhauer who scored 206 points in the 16 season games. Woodle shot an even .500 from the floor and hit charity shots at an .863 pace. His game average was 18.2.

His biggest night was January 15, 1960, against the Linfield Jayvees when he scored 31 points. This was the same evening varsity guard Ed Grossenbacher broke the school single-game record with 38 points. Woodle's shooting averages were

Clean - Quiet - Modern - Electric Heat
ILA V MOTEL
ARCHIE & EDNA MATTOON
4195 Portland Rd., NE Salem, Oregon
Phone EMpire 2-6312

NEW SCHWINN RACER
With 8 Speed Gear Shirt

BRADLEY'S
Bicycle & Sport Shop
237 High St. E

THE BEARCAT BANK

ONLY ONE BLOCK FROM THE CAMPUS

FEATURES ALL BANKING SERVICES

UNIVERSITY BRANCH

THE UNITED STATES NATIONAL BANK

1310 State St.

Salem, Oregon

PACIFIC TRAIL JACKETS

WASH & WEAR

CORDED COTTON
WATER REPELLENT

\$9.95 & \$10.95

ALEX JONES
State at High

WAYNE'S BARBER SHOP

NOW WITH 3 BARBERS

146 South 13th Street
A Block Off Campus

What Clean Young People!

That's a nice compliment, isn't it? We can help you deserve a compliment like that. Our One-Stop Service on all kinds of Laundry and Dry Cleaning is mighty handy for you Willamette folks. If you wish you may say "Charge It."

FERRY STREET LAUNDRY

1255 Ferry St.

EM 2-4555

LATE HIT RECORDS

45 R.P.M.

Not the Latest But Good
All Popular Artists
Originally 98c

NOW
6 for 89c

33 R. P. M. RECORDS \$.88
33 R. P. M. STEREOs \$2.98

F. W. WOOLWORTH CO.
STATE & LIBERTY

2 English Srs. Win \$6,000

Two Willamette senior English majors have won \$6,000 National Defense scholarships to study for their doctors' degrees.

Robert Bennett of Seattle, will launch his three-year post-graduate program next year at the University of Pennsylvania where he will specialize in 19th century English literature.

Edward Huggins has won his award at the University of Oregon where he will begin studies next year in early English or Renaissance literature. Huggins is married and, under the terms of the scholarship, will receive an additional \$400 annually for his wife.

Bennett transferred to Willamette when he was a sophomore from the University of Washington. He is a member of Phi Sigma Iota, the Creative Writing club, is a tennis letterman and held the William W. Youngson scholarship at Willamette. Bennett was Willamette's Rhodes scholarship nominee this year.

Huggins transferred to Willamette from the University of California last fall. He also attended the University of Santa Barbara for a year.

Last week another Willamette senior, Patricia Ann Mitzel, a French and psychology major, won a National Defense scholarship to study in Romance languages at the University of Oregon. Last year five Willamette students were recipients of National Defense awards.



Lyle Tucker, junior, and Claude Garvin, senior, are planning to attend the biennial Kappa Delta Pi convention in Chicago, March 10-12. With all expenses paid by the national organization, which is composed of students in education who have a grade point accumulation placing them among the top 20 per cent of the students on their campus, the fellows hope to gain information which the Willamette chapter can use. Tucker, the official delegate, has the vote of the Willamette group in all policy adoptions and business transactions.

Frosh Give Challenge

By HOLT WILLIAMS

Confidence and cockiness were the order of the hour during Tuesday's challenge assembly, as each class president in turn boasted how his class was certain to win the Glee contest. The frosh Glee participants filed in the gym jubilantly singing "Hi-ho hi-ho—it's off to Glee we go,"

and perched atop the east balcony overlooking the upperclassmen.

Frosh prexy Bob Hakala scoffed at the inability of the upperclassmen to capture him, even though the sophomore girls did manage to kidnap frosh song leader Sue Lewis for a night. Bob insisted that his class was "bound" to win Glee. He concluded his challenge by adding that sophomore class president Hugh Stites was here strictly due to the courtesy of the freshman class.

Stites, after a rather eventful day and night, nonetheless seemed no worse for wear and answered the frosh challenge with the reply that due to his "inside look" at the operation of the frosh, he was positive that the freshmen were too disorganized to even be a threat and assumed that the juniors and seniors were

English, Psych Profs Praise, Score Glee

By HOLT WILLIAMS

Glee week is an eventful one for many WU Bearcats, and particularly for the freshmen it is a time of the year when the spotlight definitely turns away from tests and books. Glee week and the perennial Blue Monday which follows is an abrupt change of pace for faculty members as well as students.

IT IS A well known fact that besides promoting the excitement of interclass competition, Glee also promotes controversy on the part of many of the members of the faculty and administration. The Collegian has selected Dr. Paul G. Trueblood, head of WU's English department, and Dr. Noel Kaestner, associate professor of psychology, to expound their particular pros

and cons on Freshman Glee.

Says Dr. Trueblood, "Freshman Glee is one of WU's oldest and dearest traditions. The same unique spirit on the part of the participants still exists as it did when I was a student here myself. There is simply no parallel to it anywhere."

DR. TRUEBLOOD emphasized that this week is an ideal time for glee. "Last year glee ran into all sorts of conflicts he says, "but this year professors have had ample time to give their first major test before midterms."

Concerning any improvements which might be made on glee, Dr. Trueblood would suggest that students devote more of their efforts to the quality of their songs and somewhat less to the elaborateness of the presentation and display.

DR. KAESTNER looks at glee from another angle. "Glee," he comments, "is not the novelty to many of the professors that it is to students. Rather than being a tradition, I think Glee is simply just an excuse to have a good time."

Dr. Kaestner, along with his psychology compatriot, Dr. Charles Derthick, believes that glee has been labeled as an "old and dear tradition" because its advocates are rationalizing and can find no other practical purpose for it.

in a similar state of affairs.

Junior class prexy Greg Milnes laughed off the boasts of both lowerclassmen and asserted, "We'll show 'em how its done." Greg maintained that he had the utmost confidence in his defending champion juniors. His classmates enthusiastically backed him up with an "abridged" version of the song "Running Bear."

A class meeting called by senior president Joe Karmos during the seniors' portion of the assembly almost resulted in the secession of the senior class from Glee, but due to a last minute emotional appeal by university president G. Herbert Smith, incognito, the high and mighty seniors reconsidered.

"No participate — no graduate," they reasoned, so the other classes can rest assured that the seniors will be in there pitching tomorrow night too.

THE WHITE ELEPHANT BOOK STORE

Open Monday & Friday Evenings
till 9

Quality Paperbacks

Record Exchange

Used Fiction & Non-Fiction

New Books — Remainders
Prints

471 Court

EM 3-7018

Department Head Flies East To Attend Education Confab

Feeling he will be able to obtain a better insight from the annual convention of the Association for Supervision of Curriculum Development, Dr. James Lyles, head of

Willamette's education department, left last night for Washington, D. C., where he will be meeting with 2,000 to 3,000 other teachers and administrators.

The convention, which will begin Sunday and end next Thursday, will find participants from the U. S. and foreign countries dealing with all levels of teaching and administration from kindergarten through college in group sessions and discussions. Educational improvements, research and more efficient ways of supervision of teachers will be presented.

Dr. Lyles will spend today and tomorrow in Charlotte, N. C., visiting his family and the Charlotte school system where he was previously assistant superintendent, in charge of instruction.

His airplane transportation is being paid by the Willamette Faculty Travel fund, which finances such expenses for approved trips as this, where the knowledge imparted is expected to be of value to Willamette's education department.

CAPITOL OFFICE EQUIPMENT CO.

Typewriters Rented - Repaired - Sold
148 High Street SE
Next to the Elsinore

Fill Your P.E. REQUIREMENT at the

YMCA

- Basketball
- Body Building
- Handball
- Swimming
- Volleyball
- Many Others

Special Fee to W.U. Students

Men \$9.00
Women \$7.00
(per semester)

Check With Mr. Sparks
For Approval

University Drug

Prescriptions, Magazines
& Cosmetics

Russ Powell
Your Friendly Pharmacist

The Campus Drug Store
On State St.

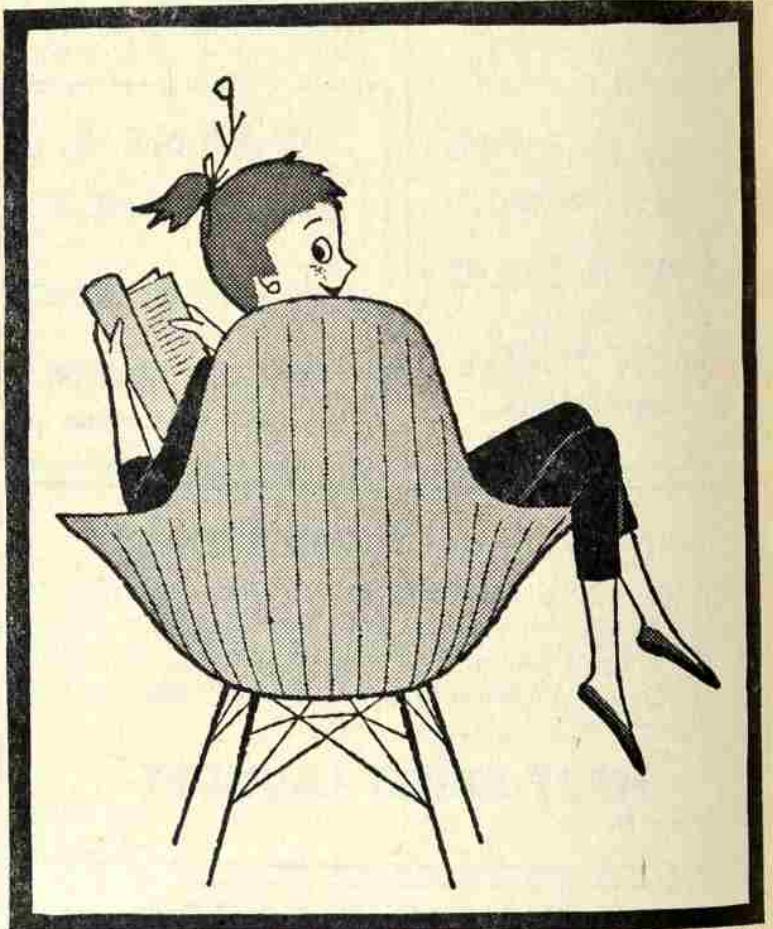
Editors Petitions Due

Petitions for editorships of three Willamette publications are due in the student body office by 4 p. m. Monday. Candidates for Wallulah, Collegian or Fuser's Guide editor for the 1960-61 school year will appear before the publications board on March 9 to present their petitions, prior to their selection by the board.

Petrie Heads Re-evaluation Committee

A report is being prepared by Mrs. Helen Brewster, secretary to the Willamette Re-evaluation committee, to be given to the Northwest association of Secondary and Elementary schools, when it visits the campus in the fall to re-accredit the university. This association conducts such standard re-evaluations of 12 to 14 universities each year, using an established formula which evaluates all phases of university operation and administration.

This is the first time Willamette has been re-evaluated since originally accredited during the Doney administration of the 20's, according to both Mrs. Brewster and Dr. Richard Petrie, financial vice-president, who is also chairman of the Willamette re-evaluation committee. However, it is expected that the process will now be repeated every five or ten years.



COPYRIGHT 1957 THE COCA-COLA COMPANY

Don't just sit there!

You'll enjoy today's copy of this publication much more if you'll get up right now and get yourself an ice-cold bottle of Coca-Cola.

(Naturally, we'd be happier, too!)

BE REALLY REFRESHED

Bottled under authority of The Coca-Cola Company by

COCA-COLA BOTTLING COMPANY OF SALEM, OREGON

Colonial House

FOR FINE FOOD

5005 SO. PACIFIC HWY.

PHONE EM 4-3744

MAC'S Barber Shop

Courteous, Dependable
Service

4 Barbers - No Waiting

Always Free Parking

Capitol Shopping Center