

Hall Picks Committee Heads, Assistants for Freshman Glee

Committee chairmen and assistant chairmen for Freshman Glee have been announced by Stu Hall, Glee manager.

PETE KREMER heads the ticket committee with Gail Walton and Bonnie Dugdale as his assistants. Entertainment will be planned by

Dick Barton, chairman, and Diane Brown. The stage crew will be directed by Lyle Green and his assistant, Doug Austin.

Marcia Ruby is chairman of the souvenirs committee, and Dick Es-court is the assistant. Program chairman is Suellen Stanley; her assistant is Maggie Hanna. The backdrop will be devised by co-chairmen Chris Schurr and Jon Wollander and assistant, Karen Hillman.

CHAIRMAN of decorations is Ray Honerlah who will be assisted by Lee Dietz. In charge of lighting are Al Stevens and Sid McAnley, assistant. Jack Withers, chairman of the publicity committee, will be assisted by Marilyn Sparks, and Harry Coolige.

The ushers will be directed by Karen Erb and her assistant Donna Horn. Dave Haugeberg is in charge of records with Phil Thom serving as assistant. The secretaries for the 51st annual Freshman Glee are Barbara Henken, Bonnie Scott and Sylvia Takeuchi.

Committees Getting Down to Work On 51st Annual Freshman Glee

Members of the various committees have been chosen and are starting work for the 51st annual Freshman Glee. Glee is scheduled for March 14.

WORKING ON publicity are Terry Shuchat, Bob Seeger, Tom Ihrig, Judy Mills and Chary Chanda. Program committee members are Judy Elliot, Bitsy Mc-

Cready, Rhetta Willeford, Nancy Adams and Fran Farley.

Carl Dwight, Dave Cammerano, John Cooper, Steve Williamson, Larry Wilson, Rod Shattuck, Myron Stensrud, Berg Heifor, Don Bryan and Ray Graber are members of the stage crew.

SERVING ON the souvenirs committee are Mike Foster, Anne Petrie, Bob Bishop, Marianna Koch, Andie Hunnell, Marcia Erwin, Bob Burrow, Bill Shape and Herb Stover.

Tickets committee members are Vern Gibbens, Gary Warden, Ron Williams, Larry Snyder, Sherri Dickerson and Mary Knott. Making decorations are Penny Post, Judy Hansen, Suzanne Smullin, Linda Matson, Karen Smith and Carl Dwight.

The backdrop is being devised by Janee Dumond, Ginny Palmer, Jan Thomas, Judy Miettunen, Chris Ryer, Lois Van Loben Sels and Chris Franz. Marian Hauke, Neil Goldschmidt, Peggy Cowen and Penny Duer are also on this committee.

Meet This Year's Glee Judges; Most of Them Are Old Hands

Many of the Freshman Glee judges, those persons on whom rests the glory of each Willamette class, are Willamette grads or have served as Glee judges before.

WORD JUDGES are Dr. Helen Pearce, Miss Fay Sparks and Mrs. Forest Lemm. Dr. Pearce was head of the English department until her retirement in 1955. She now lives in Salem.

Miss Sparks is a Willamette graduate who teaches English at Canby high school. She judged words last

year and has been a presentation judge.

ANOTHER JUDGE with previous experience is Mrs. Lemm who has judged words for two years. She is supervisor of Marion county schools and has a background in speech work.

Music judges have positions in the music field. Richard McClintic serves as orchestra director at North Salem high.

MISS NONA Pyron, a new member of the College of Music faculty, will act as a music judge. Miss Pyron is instructor of cello and theory at the Music School.

The final music judge is Dean Melvin Geist at the College of Music. Dean Geist has headed the Music School since 1939.

PRESENTATION judges are Robert Voigt, Beatrice Bliss, John C. Peery and Mrs. Howard Miller. Voigt is Dean of Boys at South Salem high school.

Beatrice Bliss is a Willamette alum and teaches English at Forest Grove Union high. Peery teaches music at Franklin high in Portland and has served as a Glee judge previously. Mrs. Howard Miller, who now lives in Salem, wrote the words of the winning Glee song in 1931.

Glee Dance Cancelled

Due to lack of space on campus, the annual Glee Bet dance scheduled for tonight has been cancelled. The dance, to have been sponsored by the YWCA, has traditionally been the last chance for making Glee bets.

He Breaks News Gently

Dr. Daniel Schulze, professor of German, will once again announce the Glee decision as he has done for the past five years. In his characteristic fashion he will tantalizingly deliver the announcement to the classes. Dr. Schulze's impromptu speeches, stretching ad infinitum, have become a classic at Glee. Although evasive and non-committal in his remarks he builds up the suspense and expectation until the crowd is hushed for a moment, and the winner is announced.

Willamette Glee Contest to Unfold Saturday

By DON SCARBOROUGH
Staff Writer, The Statesman

Freshman Glee, the annual song contest at Willamette University that's an education in itself, will unfold Saturday night for the 51st time.

For many students, Glee carries more vivid memories, and for a longer time, than many of the courses they take during their four year stay. When they look back as grey-haired alumni, it's not western civilization or art history they remember fondly, but the long hours writing an original song, singing practices, Glee night, and "Blue Monday."

Observers Silent

Who's going to win this Saturday when the big student festival opens at 8 p.m. in the gym? Observers who have been on the scene almost as long as Glee are as close mouthed as a football coach.

Lestle (Les) Sparks, longtime head of the physical education department, said warily, "Well the seniors looked good in practice this morning, but then so did the freshmen, and well, it's hard to say."

The gym's janitor has seen them come and go, "But I don't pay much attention to them anymore. Everybody really has a good time, though."

The Cat Cavern student hang-out is a quiet place, usually, but before Glee it's a good place to pick a fight or to place a bet, payable on "blue Monday."

Ready for Fight

"The seniors only got 25 people out this year," an underclassman announced. "What d'ya mean," a senior shot back, letting everyone know they had 75 of the best ready for the big fight.

One of the benefits of Glee is that it takes both men and women to sing the parts. "A lot of fine friendships develop out of Glee," a veteran of three campaigns said. For a solid week students arise in the black of night to rehearse songs and marching

in 5 a.m. practices. Misery like that builds friendships among fellow sufferers, and stirs up the proper fighting spirit against those of the other classes, without whom everyone else could stay in bed.

The pre-Glee uproar seems a

little quieter this year than in the past, several observers noted.

Tests by Mistake

"It's so quiet," one student said, "that by mistake some professors are giving tests, thinking it's just

another week."

"I do most of my studying just before 5 a.m. practices," a freshman coed said, adding however that Glee had taken some of the energy from school efforts.

Does Glee interfere with the

academic life?

"On a grand scale!" a professor said.

"Not at all," a student said, certain that the old classic is an educational experience not to be found in a classroom.



SPRING DIP—Willamette University's freshman class made a trek across the mill race Monday under the eyes of upperclassmen. It was the penalty for finishing last in annual Freshman Glee competition Saturday night. Before

the excitement was over, many upper class students also had taken a swim but it seemed enjoyable in the 60-degree weather. (Capital Journal Photo)

'Green' Frosh Predict Win; Moan Horrid 5 a.m. Practice

With eager anticipation and happy smiles, the untried class of 1962 is predicting a frosh win in Glee this year. They are also asking questions about who dreamed up that invigorating idea of getting up at 5 a.m. to practice and when did glee start?

AS FRESHMEN, Jim Oakes and Brick Harrison of the class of 1912 challenged the Willamette students to a competitive song contest. This challenge, issued in 1908, started the traditional song fest which has

continued for 51 years.

Glee has remained much the same through the years, but some traditions have been added, some prohibited, and others enlarged upon. During its first years, "College Glee", as it was called, was held in Waller Hall. The freshman class won the first competition with a song including these words: "New Willamette, New Willamette, Hail, Hail, Hail. We will forever love thee, Hail, Hail, Hail."

THE FIRST Methodist Church held the avid Gleers of 1911. For the first time the seniors marched in wearing caps and gowns. Glee in 1931 saw the seniors removing their robes to sing. These traditions are still carried if the senior class wishes.

For the next eleven years Glee was held in the Salem Armory. Upon the completion of the new Willamette gymnasium in 1923, Glee was moved to the gym where it has remained.

AS THE years passed, the pre-gee challenge convocation appeared. Parodies were not used at first. Instead, the classes used old glee songs and sang them in honor of the alumni. The presentation was different as the classes just began singing when all was quiet instead of singing in order of class.

For every good deed there is a reward, and this also pertains to glee. The reward for winning Glee is a desirable two o'clock late per for the women of the winning class, but in 1912 the women were awarded with a one o'clock serenade and the banner.

THE BANNER that is given to the winning class originated in 1909. Since the Glee committee had no money, the Freshmen made the

banner which was used until 1923 when the Glee committee decided that they could afford to buy one. The winning class of 1944 insured this year's winner of a relatively new one when they ripped the banner to shreds while trying to obtain it.

During the entire 51 years, only two classes, 1936 and 1954, have won for four years consecutively. Only the freshmen neophytes have a chance to equal this record, and they maintain that they have the spirit, talent and organization to do it.

Committee Urges Sale of Frosh Glee Records

Be your own disc jockey!
Buy a Glee record!

Orders for records which will be taped at the 51st annual Freshman Glee March 14 will be taken starting Monday. Sales will continue until the night of Glee.

Dave Haugeberg, records committee chairman, and members of his committee will collect the \$1.25 fee. It is not known as yet when the completed record will be delivered.

Haugeberg urged all students to order a record, saying that a subsidiary company of RCA is handling the recording and the records will be of the best possible quality.

An order blank will be inserted in the Glee programs for the use of alums, parents and friends attending Glee. The committee asks that students order their discs next week so that the committee can have a more accurate idea of how many records need to be cut.

Frosh Gleers Face Practice, 'Up 2-3-4' Early Monday Morn

At 4:30 a.m. Monday morning sleepy-eyed freshmen will crawl out of their cozy beds wondering why they ever got involved in this rat race anyway. At 5 a.m. they will begin learning the "up, 2-3-4, smile, 2-3-4" routine and open the week of practice for Freshman Glee.

ALL THE HOURS of practice will be culminated Saturday evening, March 14, as each class presents its original song written around a "Novelty" theme.

Pat Avery will direct the freshmen; Jerry Darby is the sophomore song leader; Sonja Peterson will lead the juniors; and Gail Boden is the senior song director.

FORMATION leaders are Ray Allen, freshmen; Tony Meeker, sophomores; Ron Walker, juniors; and Larry Willingham, seniors.

Glee activities were officially begun Tuesday with the Challenge Assembly. Bill Adams, freshman class president, arrived in an army car thus successfully eluding would-be kidnappers.

After Adams issued his challenge,

each class president responded with a speech. Dorr Dearborn, sophomore, accepted the challenge after a slight interruption by the seniors and their "Gorgeous George." The juniors also accepted the freshman challenge following a vocal presentation by a trio of its members.

No Monday Blues Predicted by Four Classes

According to a member of each class, Freshman Glee will have four winners this year. These four students state their reasons in the following stories.

By **BARBARA BALSINGER**

Why are the Freshmen going to win glee?

What a silly question!

Indisputably you must begin with the fact that the Freshmen have a superior intelligence and the ability to use their intelligence.

When you back this up with the fact that they are superior in number, spirit, and the will to win, it becomes immediately obvious that the class of '62 is the class that will be remembered as one of the greatest ever, of our four-year glee winning classes.

ONE VERY important factor to consider in the choice of a Glee winning class is, of course, the song. The Freshmen Song "Ode to Jason" is outstanding in style, ap-

propriateness, and originality. The song leader, Pat Avery, has done a terrific job and formation leader Ray Allen is leading the class on the way to victory.

WU will really see the potential of Glee developed in the Freshmen debut tomorrow night. Sit back and take a long look, you "experienced" classes. You'll see what an enthusiastic, capable class can do. They can win Glee . . . and I'm willing to bet on that!

By **TERRY BOYD**

On March 15, 1958, the freshman class — some 220 of us — marched up to take the booby-prize of Freshman Glee. It will probably be a long time before our Willamette family will allow us to forget the chug-chug-toot-toot that so gallantly earned us fourth place.

WE HAVE rationalized the loss and attributed it to the flu which cancelled our class activities in the fall of '57 or to the class' overall ignorance of the meaning of Glee. But this loss was not a failure because we now have a class — a defeated class that doesn't wish to put on three more Blue Monday assemblies.

This year, as sophomores, we have a new song, as Dorr assures me that the class feeling was to reject the locomotive as a suggested novelty song.

THE NEW song swings along a Centennial theme, written as a pioneer song on Oregon's birthday. Joan Barber has done an admirable job writing the melody with Keith Taylor on the accompaniment and ably assisting in arrangement. Keith and Pat Holcomb will accompany the class again. Maureen Avery, Dianne Dickson and I have done our best with the lyrics.

Jerry Darby has been elected songleader for Glee this year, and we know that he will be able to handle the class as well as did Tom Elliott last year. Smile 2-3-4 Meeker is again formation leader, hardened by experience and hoping that his marchers haven't forgotten how.

The sophomores accept the freshman challenge this year with half the optimism and twice the organization with which we met the foe in '58!

By **BOB BENNETT**

Our chances in Glee? Well, we can hardly go wrong with the centennial climate behind us. Of course, we with humbled brow note that our class — the class of '60 — is the only class participating in the 51st Freshman Glee to have won a Glee before. This is noted, not to bolster spirits, but to point out that evidently our class does know how to succeed.

IT IS our conviction that Pasha Nye forgot to include one headliner among his Freddy Freshmans and Johnny Juniors; that was Senior star, Sally the Swimmer. To the seniors we must state that our class

has not proven to be consistently mediocre.

And now, not to slide over our own virtues or vices, our strength lies in a successful formation leader, a weathered veteran of two successful formations, and our charming song leader, who also has musical ability. Actually our song will be tops if it is sung well, and our formation can't miss. We certainly don't find ourselves in the unenviable position of the sophomores: sink or swim.

By **WARREN WALKER**

Why is the extravaganza to be held next Saturday night called "Freshman" Glee? Of course, the freshmen have a few organizational chores (which they will almost certainly mismanage), but the caliber of their performance is obviously unworthy of the name of an event participated in by their academic betters.

I TALKED to Freddie Freshman at the one-act plays over the weekend and he straightforwardly informed me that his class had the best formation and song. And I believed little Freddie too. I really did!

But when I beheld the frosh's facsimile of a practice session Monday morning, I came to the conclusion that the Tombstone used in their formation should be inscribed with the epitaph: "Here lies Freddie Freshman, and he lies, and lies and lies."

AND, WHEN I saw Sammy Sophomore in the library last night, that worthy fellow was not even loyal to his class. As he signed for the book Fundamentals of Millstream Fording, he whispered to me, "the smart money picks the sophomores to dampen their tootsies come Monday Blue." They do have a good slogan though: "Four shuns for sixty-one."

Johnny Junior told me that the theme of the junior's formation is "Rain." "Confidentially," Johnny said, "it's a huge raindrop made out of a bunch of drips." But in spite of his "give-up-quick" attitude I informed him I had his class picked for second place; only 200 votes behind the seniors in fact!

It would follow then, that the event should be forthwith known as Senior Glee, for the class of 1959 will undoubtedly captivate the Willamette student body, the judges, the audience and (it goes without saying) the Glee banner.



CARRIED IN BY STALWART classmates, and accompanied by squealing females, "Gorgeous" George Nye with streaming golden locks, president of the class of 1959, enters the gym in last week's challenge assembly. The assembly marked the first official event of Glee. They too predict a win.

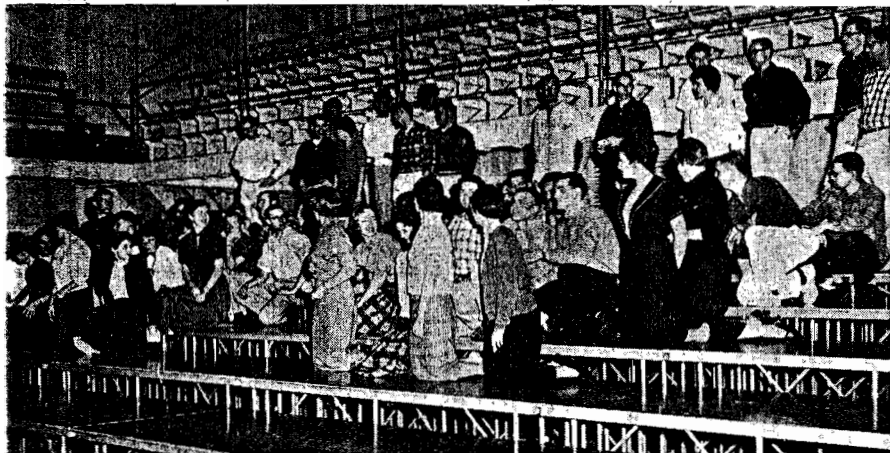
Glee Records \$1.25

Buy your Glee records now, urges Dave Haugeberg, chairman of the records committee.

Receipts for the records can be purchased from any member of the committee for \$1.25. The sellers will be in Eaton Hall and will be available next week also for those unable to purchase a disc sooner.

Novelty Theme Highlights 51st Glee Tomorrow

Weary, Sleepy Heads Eye Coveted Banner



THE SENIORS, THRICE THROUGH GLEE, ready for a fourth try charm, practice for Willamette's 51st glee extravaganza. The finished product will appear tomorrow night. (Photo by Frank Bash)

That week of little studying and less sleep will be ended tomorrow night with the performance of the 51st annual Freshman Glee. Each class will present an original song, this year written around a Novelty theme.

THE CLASSES start marching into the gym approximately 15 minutes before the starting hour of 8 p. m. in order to begin the festivities promptly.

After the traditional senior "cut-ups" and the singing of two parodies by each class, Freshman class president Bill Adams will give his welcome. Following Glee manager Stu Hall's report, the competition will get underway.

Second place finishers last year, 76 members of, the class of 1959 will present "South Sea Holiday" from a formation featuring two

bongo drums done in black and white. Words were written by Sandi Harris and Marg Lowe, and the music was composed by Dave Landis and Gene Parrett.

The juniors, only previous Glee winners, placed first their freshman year and this year will sing "Humidity Ditty," lyrics by Chuck Foster and Ralph Litchfield and music by Sonja Peterson and arranged by Barbara Dixon, Nancy Weeks and Patricia Whelan. The 90 juniors' formation will consist of an umbrella with those comprising the handle wearing black and those forming the shade wearing red.

LAST YEAR'S swimmers, present sophomore class, will render "This Must Be Oregon," with words written by Maureen Avery, Terry Boyd and Dianne Dickson, music composed by Joan Barber and Keith Taylor. This Centennial-type song will be presented from a map of the state of Oregon with a star denoting Salem and WU. Before forming the map the 118 sophomores will make the date 1859, and before leaving the stage they will form the numerals 1959.

The 189 newcomers to Glee, the class of 1962, will sing an "Ode to Jason" after forming a black tombstone with the word "Jason" embossed upon it in white. Marian Hauke composed the lyrics, and music writers were Dave Ackerman, Pat Avery and Gary Frame.

"Blue Monday Madness," the entertainment which will follow the singing, will be narrated by Dick Barton. Styles of past Blue Mondays will be depicted, and a singing group will perform.

THE NEXT item on the program is the moment for which all participants wait each year. Dr. Daniel Schulze, professor of German, will deliver the announcement of the winners.

Five Freshmen co-eds will carry the coveted Glee banner escorted by four Freshmen men. Diane Brown, Linda Dumas, Nancy Gray, Colleen Walrod and Betty Williams are the feminine portion of the honor guard with Mike Estcourt, Pat Kirkpatrick, Kenny Moore and Ron Williams composing the masculine part.

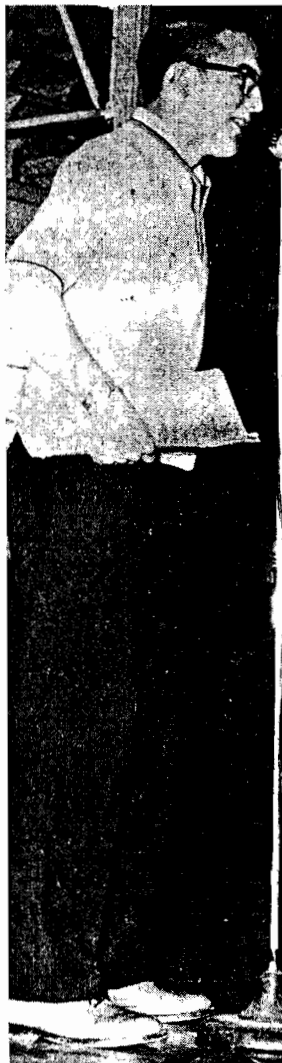
As Dr. Schulze nears the end of his announcement, the girls will leave the stage, and the fellows will guard the banner until the winning class makes its triumphal dash to the stage.

THE WINNERS will sing their first place song and any previous Glee songs. Women of the winning class will receive 2 o'clock late pers, and other women may stay out until 1 a. m.

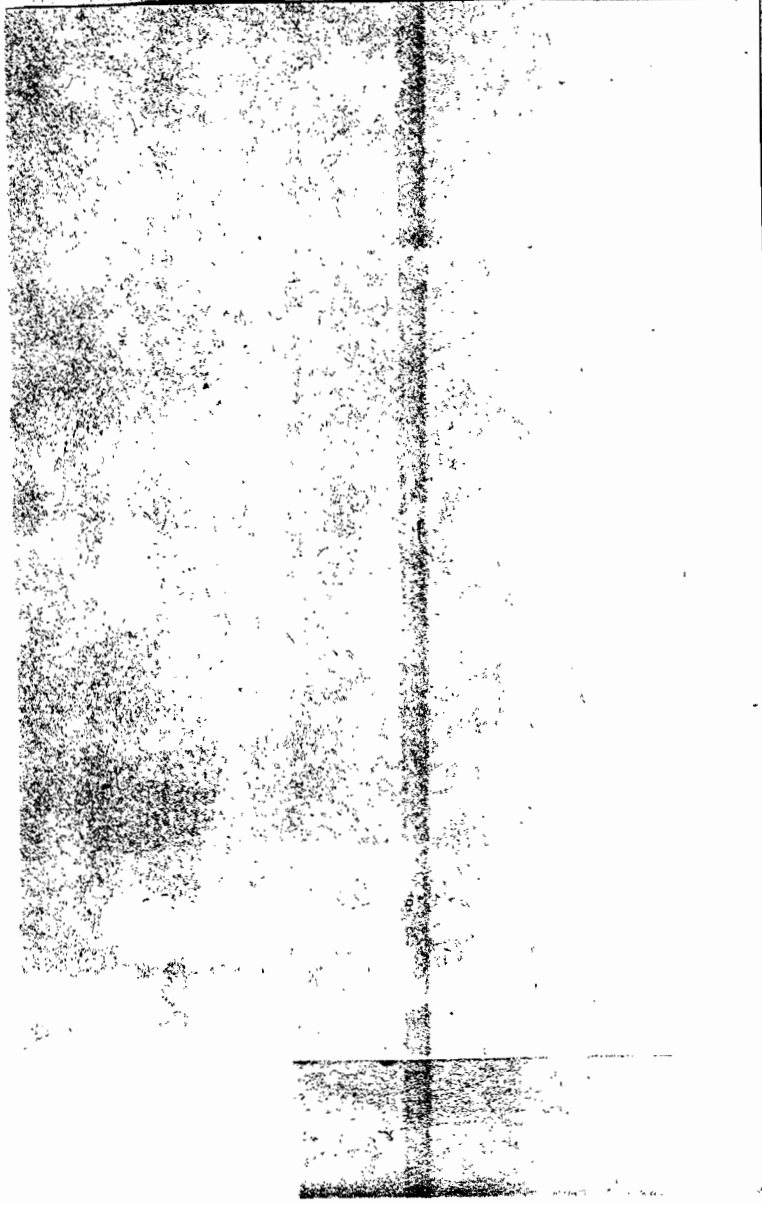
Blue Monday activities will take place the Monday after Glee. The losing class is in charge of the Blue Monday convocation preceding their swim in the Mill Stream.

Students are asked to remember that all activities should be in good taste and bets should be made which will not physically involve members of the faculty or result in damage to university property. Stu Hall, Glee manager, requests the cooperation of all students.

Hall also says that all "messy" bets - i.e. those involving catsup, shaving cream, animals, etc. - will be paid off on the P.E. field immediately following the glee.



STU HALL
51st Glee Manager



Monday Swim Cuts, Losses Numerous

A fractured arm, severe scalp lacerations, a knee injury and an injured wrist plus numerous cut feet were treated by the infirmary following Blue Monday's traditional millstream swim, according to Henrietta Althoff, school nurse.

A SUBSTANTIAL number of students with severe respiratory infections were also reported by the school health center. Miss Althoff noted the increase in the number of cases was no doubt aggravated by Glee week late hours.

Other Blue Monday accidents included the loss of glasses and broken wrist watches when surprised upperclassmen were tossed in the stream with the losing class of 1962. One student, a junior, suffered a face cut from falling glass in pre-Glee excitement when she swung an umbrella too high and broke a light fixture.

STUDENTS have been urged by health authorities to observe health rules in an attempt to outwit the flu "bug" which is invading the state in epidemic proportions according to a report of the Oregon State Board of Health. The number of flu cases now in the state is the greatest since December, 1957, which saw the end of the Asian flu epidemic of that year.

Gleecerpts

ONE YEAR AGO . . .

April 4, 1958—The freshmen marched to Glee this year to the tune of "The Bridge on the River Kwai." The Class of '61 found the bridge was gone on Blue Monday when they made the traditional swim.

FOUR YEARS AGO . . .

March 25, 1955—An increase of 100 per cent over the average was seen in the infirmary this week after Glee. One of the unusual ailments was blackberry bush scratches suffered by a male student as a result of the Mill Stream dip. Knee and elbow abrasions were suffered by Susan Libecker when the Freshmen rushed for the Glee banner.

TEN YEARS AGO . . .

March 11, 1949—Representatives of the Russian army, navy, peasants, workers and miners staged a budding revolution which spread from the steps of Waller hall to the front of the state capitol, with at least 200 students trailing behind. Signs proclaiming "Down With Everything," "Workers Arise," and scattered cries of "Veto!" greeted surprised legislators who paused from law making duties.

TWENTY-THREE YEARS AGO

March 17, 1936—At the present time we of the United States are thankful for the isolation afforded us by the Atlantic Ocean. The militaristic cauldrons of Europe have reached the boiling point . . . more than 80 freshmen took a ducking in the mill race Monday. It was said that there had not been as many wagers on the outcome as is usual due to faculty disapproval of the custom.

At Willamette

Annual Glee Highlight of Weekend

By JUDY OLSEN

Statesman Correspondent

The highlight of the year, Willamette's Glee night will be held Saturday in the Willamette gymnasium, when the four classes present their intricate formations and sing original songs around a novelty theme. The senior rendition will be "South Sea Holiday", while the junior selection is titled "Humidity Ditty."

"This Must Be Oregon" will be the presentation of the sophomore class and the frosh will challenge the upper classmen with "Ode to Jason". Dr. Daniel Schulze will make the presentation of awards and Dick Barton will narrate the intermission entertainment. Juniors Nancy Weeks and Pat Whelan, both of Salem helped with the arrangement for their class song.

Judges for the event include: words, Dr. Helen Pearce, Miss Fay Sparks and Mrs. Forest Lemm; music, Richard McClintic, Miss Nona Pyron and Dean Meivin Geist of the Willamette school of music; presentation, Robert Voigt, Beatrice Bliss, John C. Peery and Mrs. Howard Miller.

Honoraries Pledge

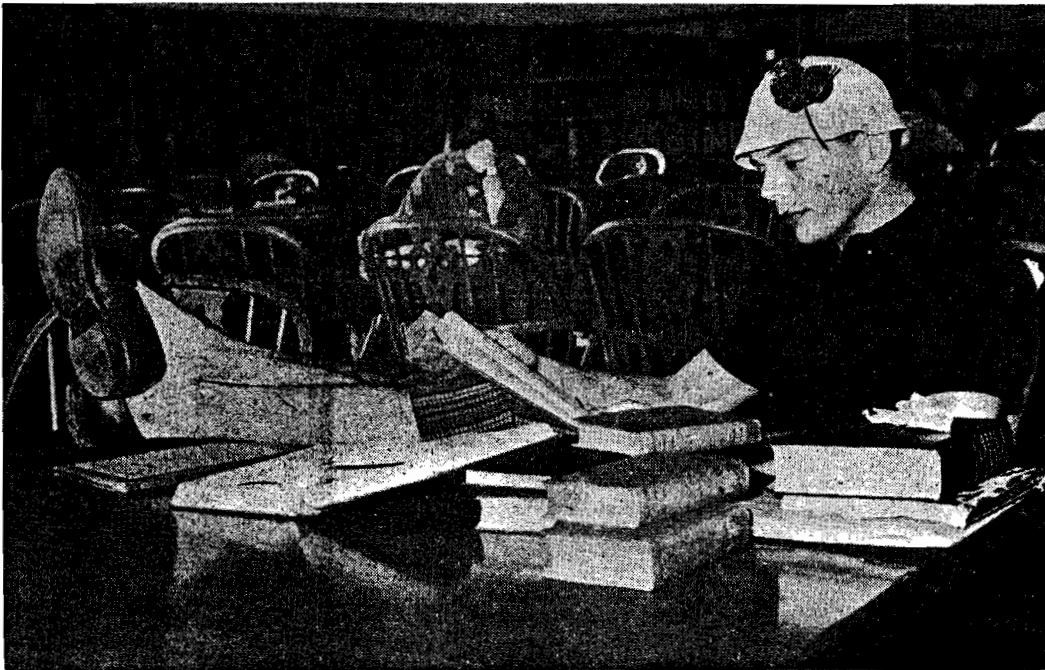
Two school honoraries pledged new members recently. Salem people honored include Delta Theta Phi pledges Fred Chambers, L. B. Day, Harry D. Lewis and Lavall Olson. Recent additions to Phi include Walter L. Barrie, Mark A. Bliven, Rick Mercer, Edward Placek and Howard Spear.

Salem students making a three point nine to a three point five grade averages, and thus qualifying for the honor roll include: Paul Allen, Joel Barber, Barbara Barrie, Dick Barton, Ken Brown, Bob Liston, Roger Moorehead, Dave Patch, Wayne Senner, Barbara Smith, Marilyn Sparks, Bill Bullard, Tim Campbell, Tom Fiske, Bob Goddard, Don Howard, John Lloyd, Peter Gray, Bob Seeger, Donnise Shaffer, and Jim Smith.



Monday Wash Willamette University freshmen rolled their pants up, let their hair down and went for a "swim" in Mill Creek Monday morning as punishment for placing last in Saturday night's annual Freshman Glee song contest. The sophomore class won. (Story on page 2.)

Clam Up and Cram!



While bells gonged, lemonade stands flourished, and male window-washers suddenly sprouted in the girls' living organizations a mournful freshman found himself and many others trapped in the library on Blue Monday studying for mid-term tests which were right on the heels of Glee this year. Several classes found themselves taking tests while still mopping water from the Millstream out of their ears. (Photo by Terry Shuchat).

'61 Triumphs; Comes From Last to First

Last year's swimmers, the class of '61, turned into this year's winners, garnering 298 of a possible 360 points in last Saturday's Glee competition.

The seniors, with their allusions to a "Victorian rule," the "Blanket rule," and other WU institutions, dropped a mere two points lower, getting a 296 total.

THE JUNIORS, under their umbrella formation, trudged into third place while the Frosh made the trip to the Mill Stream. The infirmary prepared for a siege, as a flu epidemic hit Salem almost at the same time as Blue Monday.

The juniors accumulated 285 points for their third place spot and the freshman 256.

IN THE words category, the sophomores had 48 points out of the possible 60, the juniors having the top score of 53 in this department. The freshmen scored 51 points on music and the second place seniors only 38.

Sophomores won in music with 48 points, the juniors and seniors

both having copped 43 points for their melodies. The swimming frosh had 34 points for their novelty song.

THE SENIORS sang lustily to gain 141 points for the rendition of their song presentation. The sophomores made 137 points out of the possible 160 and the juniors trailed the freshmen by one point with 120 votes.

The sophomores took third in formation with 65 points. The senior bongo drum formation totaled 74 points. The juniors were second in formation with 69 points. The class of '62 gained only 50 points with their tombstone formation.

Payment of bets highlighted the Blue Monday convocation, with "Free Love" and "Obstreperous Osculation" as the main events of the day.

ASIDE from the colds that came out of the Mill Stream and a few sophomore casualties, the students observed Blue Monday with no losses.

The same couldn't be said for the undergrads at Yale. The sons of Eli, tired of the long winter of classes, held a snowball fight with the New Haven Police Department while Willamette was holding Glee. As a result of the incident, the entire undergraduate student body, some 4,000 students, has been placed on Social Pro.

Not only do the Yale underclassmen have to do without social functions for the rest of the year, but they must attend all classes without fail. Shades of compulsory chapel!



Blue Monday is going to be mighty drafty for Jack Hjelt if the sophomores land a lower berth than the frosh in tomorrow night's Glee contest. There's a technique to managing a tie, he warns Chris Schurr as the two get in practice for what promises to be a frantic day. Other too-optimistic Gleers will be wife-hunting, roller-skating and prof-mimicking when Blue Monday dawns.

(Photo by Frank Bash)

AT WILLAMETTE

Students Start Trek Homeward

By MARILYN SPARKS
Capital Journal Correspondent

Those 16 glorious days of vacation begin tomorrow on the Willamette campus. Christmas holidays will end January 5, 1959, at 8 a.m.

Christmas parties have kept students busy this week. Fraternities and sororities have held parties for underprivileged children and have sung carols at nursing homes for their Christmas service project. WU French classes and the French Club from South Salem High will sing carols to several French families tonight.

Salem orators have been participating in recent speech events. Kay Farley and Bill Ford took part in the state extemporaneous speech contest. Julian Thurston placed second in the state peace oratorical contest. Kay Farley made the semifinals in the Western Speech Association forensics tournament.

Plans for the 51st annual Freshman Glee are being formulated under the direction of Stu Hall, Beaverton, newly elected Glee manager. Committee chairmen are being picked this week.

Steve Taylor is the newly selected editor of the Oregon Federation of Collegiate Leaders bulletin. Steve was a member of the WU delegation to the OFCL conference.

Donnise Shidler, first vice president, and Ruth Harnsberger, second vice president, are two of the new officers of Willamette's Student Education Association.

Nancy Teague was one of six students initiated into Phi Sigma Iota, national romance language honorary. Scholarship and a certain proficiency in a romance language are requirements for membership in the honor group.

Bonnie Scott, freshman from Honolulu, was chosen Little Colonel by Willamette's AFROTC students. Bonnie and the other members of her court, Ruth Parrett from Portland and Carol Hamman, Menlo Park, California, reigned over the Military Ball last Friday night.

Varsity Wading Team



Several members of the varsity wading team cling together during their introduction to the sport. Sophomore coaches were on hand during the festivities of Blue Monday, to give helpful instructions to the fledgling waders. Some of the freshmen were hesitant early in the workout, but as the aquatic exercise progressed they entered the spirit of the thing. (And the mill stream.) Unfortunately, a few belligerent swimmers failed to take the watery dip, which they earned by losing Freshman Glee, without pulling in a few upper classmen. Failure to accept the consequences of losing Glee in a sportsman-like manner, could bring the death of the traditional mill stream swim and even of Blue Monday activities. Tough luck frosh! (Photo by Louis Seagraves).