

1908 FRESHMAN GLEE 1958

50 GLEE-FUL YEARS

MARCH 15, 1958

Third Take For Fifty-Eight



FOR THE THIRD time the class of 1958 won the annual Freshman Glee. Ron Kingsley, their song leader, and George Hoyt, serving his fourth year as formation leader, led the seniors to a well-earned victory.

GEORGE HOYT again directed the winning formation.



SENIOR SONG leader, Ron Kingsley, directed the winning class.



"BEARCATS TO VICTORY" led the seniors to victory and they scrambled for the coveted Glee Banner.



"I Challenge..."



"MIGHTY SOPHS" render their interpretation of the Junior "Fight" song.



FRESHMAN CLASS President Paul McGilvra looks tired, but delivers the challenge, full of Frosh fight.



PAUL McGILVRA is "escorted to the Challenge Assembly by upperclassmen following a weekend "Vacation".



THE SOPHOMORES proudly sing the previous year's winning song.



THE FRESHMEN are portrayed by the Sophs as the "shy, children of Glee."



THE SENIORS at the last minute casually decide to accept the Glee challenge.

Acceptance Means Work!



THE LIGHTING COMMITTEE goes to work on the big task of wiring the gym for the big night.



FORMATION LEADERS Tony Meeker, Ron Walker, Larry Willingham, and George Hoyt hold friendly formation confab.



EXECUTIVE COMMITTEE - Strong supporting factor of Glee is the Executive Committee composed of Dean Short, Roy Chapin, Mac Baker, John Bergstrom, Kathy Burnard, and Dale Daniel. Absent are Ann Bercaw and Barbara Dennis.



PRACTICE, practice, march, 2-3-4 says the Juniors.



GLEE SONG LEADERS gathered around the piano are Tom Elliot, Janet Jamison, Gail Boden and Ron Kingsley.



ACTIVE HISTORY COMMITTEE turned in an exceptional job. Members are Beth Robertson, Lyle Tucker, Karen Henninger, Dean Kohntopp, and Alan Zehntbauer.

THE BIG NIGHT



THE SENIOR cut-ups ridiculed the Class of '57's controversial acts.



GLEE MANAGER Dale Daniel acted as able Master of Ceremonies.



THE JUNIORS proudly took second place singing the song "To Victory." Willingham and Gail Boden were formation leaders.



SURPRISED SOPHOMORES moved to third place this year with their song "To Victory." The formation leader was Ron Walker, and Janet Jamison served as song leader.

10th GLEE



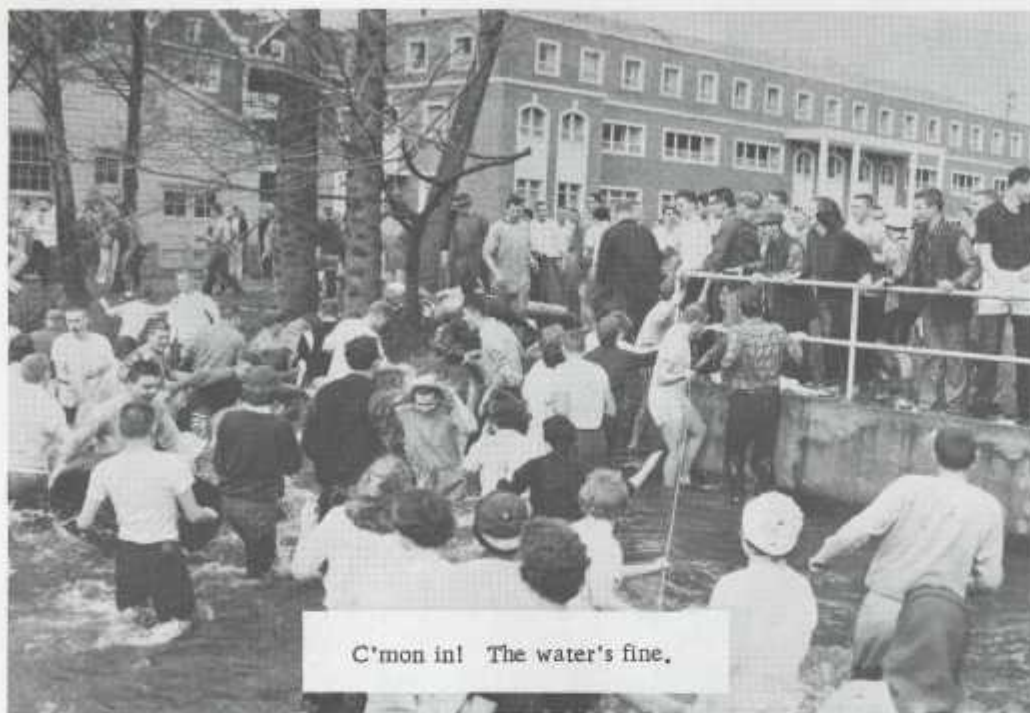
Our fight song "Cardinal and Gold." Larry [Name] and song leader respectively.



BOOKIE WARREN WALKER gave Glee betting tips to reporter Bob Treistad during entertainment.



THE FLOORED FROSH found themselves fourth and millstream bound. The cliché "The Freshmen never lose" was broken. Tom Elliott was song leader and Tony Meeker served as formation leader.



C'mon in! The water's fine.



Two advocates of free love.



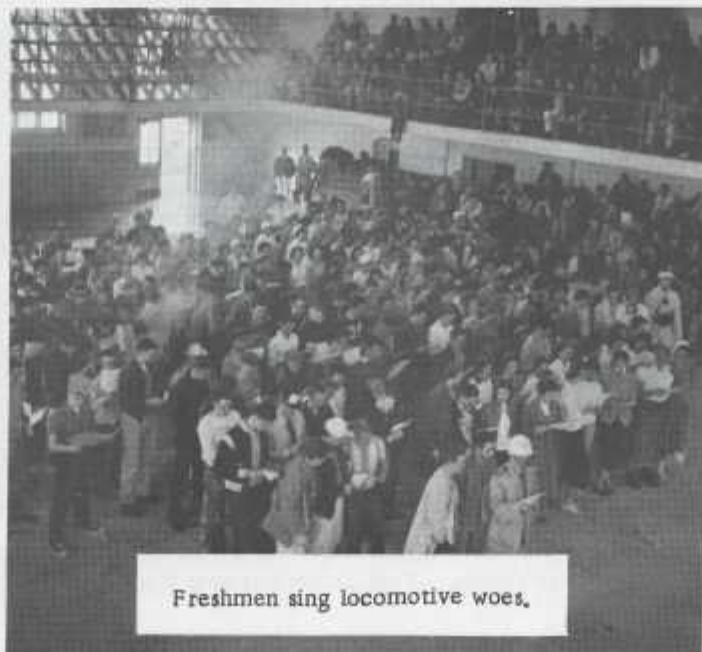
Similarity?



Lend me your ears.



I believe...



Freshmen sing locomotive woes.



Coffee anyone?

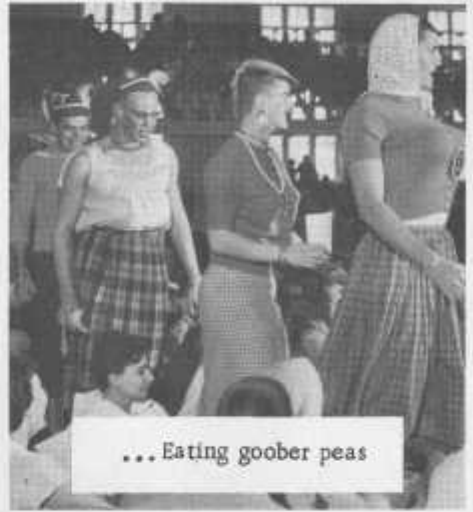
... AND THE DAMP, BLUE MONDAY



Taxi for hire--cheap



Smile, 2, 3, 4



... Eating goober peas



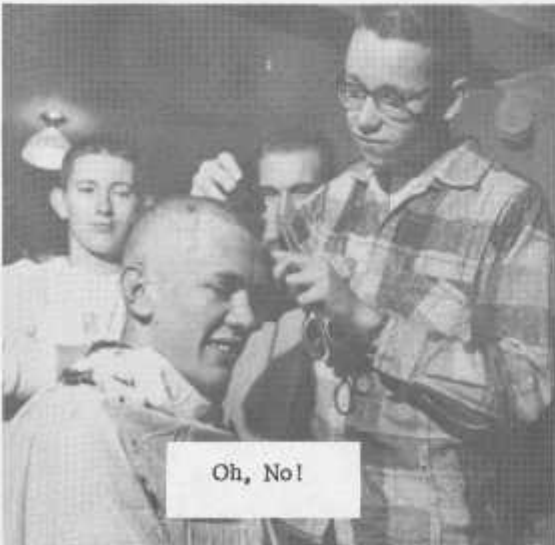
Mmmmm... BOY!



Junior front line?



What, me worry?



Oh, No!



What would the barber's union say?

Very special thanks go to Phil Henderson, John Barth, and Jim Cline who spent many hours taking and developing these pictures.

Glee-Makers



Jerry Darby



Andy Snyder

Lighting



Dale Daniel,
Freshman Glee
Manager of 1958.



Bill Richter



Ed Hall

Records



Karen Henninger



Dean Kohntopp

History



Jim Wright



Pete Welch

Props



Roy Chapin,
Assistant Glee
Manager.



Connie Snow



Judy Rettig

Ushers



Marcia Humphrey



Larry McMurray

Tickets



Terry Boyd

Programs



Carolyn Schrag



Doug Ward

Publicity



Barbara Royer



George Rogers

Program



Russ Peterson



Jo Gannon

Souvenirs



Dave Marsters



Judy Teufel

Backdrop



Gail Larsen



Maureen Avery

Decorations



Hard working Glee Secretaries Geranna Stevens and Kathy Burnard.