

MISS CHRISTIE L. DRESSLER
14 WEST MAIN STREET NO. 11
LOS GATOS, CA 95030

G80



Willamette Scene

Willamette University • Salem, Oregon • Winter, 1981 • Number 1 • (USPS 684-260) • Second Class Postage Paid at Salem, Oregon 97301



WINTER 1981

INSIDE THE SCENE



	Page
Bell Issue Still Burns	3
Surveying	4-5
Distinguished Visitor	6
An Eye Opener	7-9
Area Directors	10
Class Notes	11-13
On the Scene	14
News Briefs	15
Bulletin Board	16

Willamette Scene
Winter, 1981
Vol. 4, No. 1

Editor: Steve Lathrop
Contributors: Bob Woodle, Wright
Cowger, Dan O'Brien, Ralph Wright
Photos: Jim Bortvedt, Sue Tackmier

Published April, August, October and
January by Willamette University,
Salem, Oregon for constituents of the
West's oldest University. Second class
postage paid at Salem, Oregon 97301.

Send address change to University
House, Willamette University, Salem,
Oregon 97301.

Presidential resolutions for the 80s

Every year by this time many of us have already made and broken several New Year's resolutions. But this year is special—it is the beginning of a new decade. During an average lifetime we will have about seven opportunities to greet a new decade. These calendar points can become pegs upon which we hang our evaluations of the past and our aspirations for the future.

I have had four previous opportunities. I have no recollection of entering the 1940's, and I suspect it would have been difficult anyway for a two-year-old to comprehend the significance of Germany's invasion of Poland and the beginning of World War II. I greeted the 1950's with the perspective of an immodest seventh grader who had all the answers. While the country wrestled with the Cold War and then Korea, I wrestled, despite by self-proclaimed wisdom, with the differences between to, too, and two. When the new decade of the 1960's dawned, I was a new college graduate and a new father. I was also amazed at how much my parents had learned during the previous decade. My aspirations were limited to passing all my courses during the first semester of graduate school and having my daughter sleep through an entire night. I did; she did; and the future was bright. By the beginning of the 1970's, I was a new college dean, probably the right job at the wrong time. Apparently college deans were still respected in Muskogee, Oklahoma, but I was in Los Angeles, California. My aspiration was to survive.

And now I greet the 1980's with a whole new set of dreams, aspirations, and resolutions for myself and for Willamette University. With more certainty than Abe Lincoln had when he first stated it, I am sure the world will little note nor long remember what I say now. But I hope some of you will look back on New Year's Eve, 1989, and can celebrate a decade of progress toward the fulfillment of these resolutions for the New Decade.

1. I resolve that Willamette University will retain its commitment to excellence in the face of increased competition for students and financial support. I read recently that 39 percent of private colleges accept virtually all students who apply despite claims of selectivity and high quality. I know institutions whose student recruitment efforts border on hucksterism. We will not relax either admission requirements or academic standards. Our commitment is to the pursuit of excellence.

2. I resolve to view my job not merely in terms of balancing the budget, administering programs, and raising dollars, but rather in the larger context of

educating people. I believe it makes a major difference in both satisfaction and productivity to keep constantly before all of us at Willamette the overall institutional mission. How much more exciting it is to realize that I play a part in equipping students with the habits of mind and heart and judgment that will prepare them for leadership roles in business and the professions and a more satisfying, meaningful life.

3. I resolve that we will have a superior physical plant as a means toward achieving our educational objectives. Through the dedication and generosity of many, Willamette is blessed with a fine physical plant. As we look ahead, however, some older buildings need renovation or demolition and there is a definite need for a new library as a focal point of our instructional program.

4. I resolve that our football team will defeat Linfield and Pacific Lutheran during this decade. In order to keep a proper balance between athletics and academics, I don't expect us to win every year.

5. I resolve that in the difficult days that lie ahead, I will not spend my time whining about the "management of decline" but work diligently to avoid the "decline of management."

6. I resolve not to fall victim to the disease of cynicism that seems to strike university campuses today. Cynicism, like the ash from Mount St. Helens, has filtered down from on high until it pervades almost every aspect of many university communities. And like the ash, it has choked life from some parts of the enterprise and made a mess of the rest. Education is one of life's noblest vocations and it is an honor to be part of an institution that affirms that there are still such things as justice, duty, integrity, beauty and truth.

7. I resolve to take some risks, personally and institutionally, during the next decade. Both the problems and opportunities are too great to settle for the supposedly safe path of "doing business as usual." The cost of rigidity might well be paid in declining enrollments, reduced employment possibilities for our graduates, and a slow death brought about by increasing mediocrity. We do not live in a risk-free society. I am reminded of the Chinese proverb: "A couple go to bed early to save candles and end up with twins." But as we engage in this high risk adventure, the sense of fulfillment and expectation is equally high. If our expectations for the 1980's are to be fulfilled at Willamette, we must be willing to take some risks.

Jerry E. Hudson

ON THE COVER

This wise old owl made a wonderful patient for Kirk McNeil, a 1965 Willamette graduate, whose veterinary practice has kept eyes like the one so openly displayed on the cover seeing clearly.

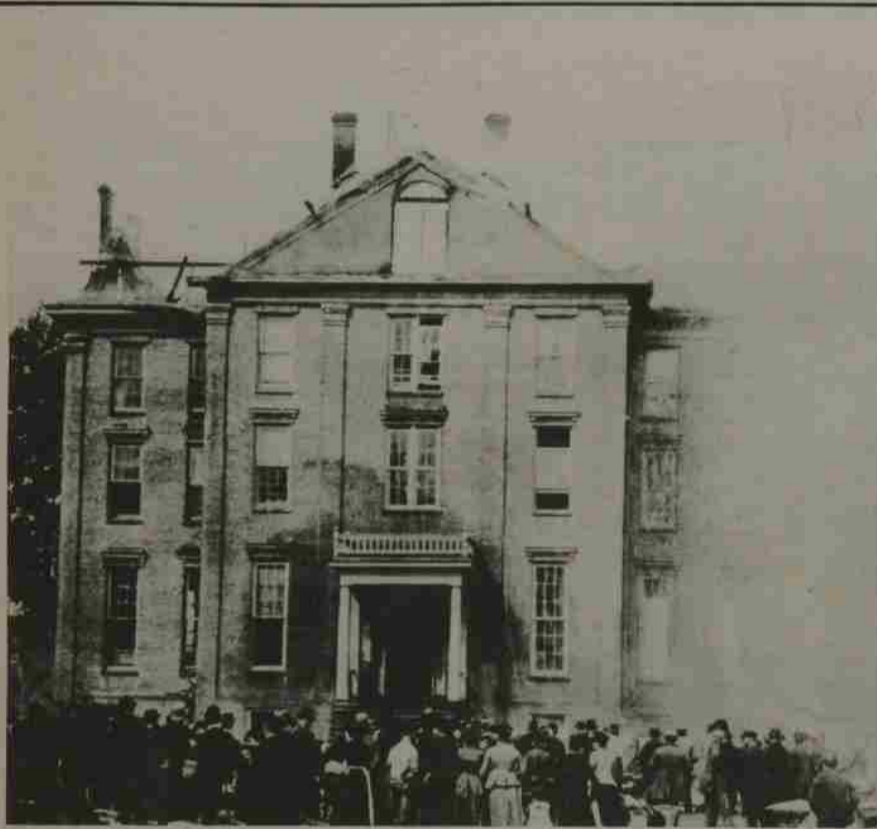
McNeil is one of only two

veterinarians in the Portland-Metropolitan area who specialize on problems with animals' eyes. His story and his practice are featured in this issue.

Willamette Scene photographer Jim Bortvedt caught the cover

shot of one of McNeil's patients as well as a lot more featured in our cover story, which begins on page 7. Another Willamette graduate, Bob Woodle, gathered the facts and reveals a dedicated and talented man.

BELL ISSUE STILL BURNS



The bell that was . . . and still is

By Wright Cowger

On Monday, June 28, 1976, the bell was lowered from the top of historic Waller Hall. It was trucked to a spot just south of McCulloch Stadium where it remains today amid the weeds, largely ignored by the campus community.

The bell was removed because it was presumed to be too heavy for the internal wooden structure of the venerable old building whose brick walls were completed sometime between 1865 and 1866. There are differences of opinion about both weight and the stress on the building. For example, the Capital Journal of June 29, 1976, carried a picture of "the three-ton bell . . . never to ring again." The Oregonian carried a short article the following day saying "it weighs seven tons." Both estimates appear to exaggerate since the Salem Statesman of January 9, 1892 announced:

THE BIG NEW BELL—The fine, new university bell was put in position yesterday and rang out a few sample tones. It is a grand bell, weighing nearly 3,000 pounds . . .

Anyone who spends a little time in Waller Hall is aware that the center of the building has deflected or sagged a considerable amount since the reconstruction following the devastating fire of 1919. However, many observers attribute this to the cumulative weight of the books which comprised the second floor university library for the many years prior to the construction of the present library.

There are other conflicting stories about the bell, known in the early years as "the great Roland." The Capital Journal, while recognizing historical uncertainties, suggested that the "fire of Dec. 17, 1919, gutted the building, dropping the bell to the ground floor." The Oregonian article the following day elaborated; "It fell in 1919 during a fire and suffered a minor crack."

In reality, the bell was nowhere near Waller Hall when it burned that cold December day. It was nestled snugly in its own special tower at the east end of the athletic field—the area now known as the Quad.

How old is the bell? How did it come to Willamette? The Oregonian said, "a gift from the Sunday school of the Methodist Church, the bell cost \$300 when it was installed in 1866." The Willamette yearbook of 1970, claimed the bell "was donated by the Methodist Church in 1884." The truth is that it was ordered by President George Whitaker on the 19th of November, 1891, from Z.T. Wright and Co., "Importer and Dealer in Machinery, Vehicles, Advance Threshers and Engines, Buggies, Surries, Carts and Wagons, Fire Engines, Stationary Engines, Boilers, Sight Feed Lubricators, Globe and Check Values, Grease and Oil Cups, Farm, Church, and School

Bells." It arrived by rail to the depot on 12th street on December 23, 1891, and the agent, W.W. Skinner, sent a note to Whitaker saying "please dispose of this as storage will be heavy."

The great Roland is the third bell on Willamette's campus. The first two both met fiery ends. A small bell in the tower of the little wooden Institute—the first building on campus and the first school in the West—was lost when students burned the building in 1872. The second bell was in Waller during the conflagration of 1891 and the Capital Journal of Sept. 16, 1891, said, "The heat in the dome was so great as to melt the college bell, and the pieces of metal when cooled were carried off as mementoes of the fire."

By December of 1891, Waller Hall had a new mansard roof and a huge bell tower. The Statesman of January 8, 1892, recorded:

AT THE UNIVERSITY—Miss Carrie Willard, daughter of Dr. Willard of Seattle entered Willamette yesterday. The big bell was hoisted to the top of the building yesterday and will be put in place today. When properly hung it can be heard for several miles around.

The following issue described: **THE BIG NEW BELL**—It is a mate to the one just placed in the tabernacle at Turner. Willamette university has had a hard time with its bells. It is sincerely to be hoped a better fate is reserved for this one.

To date its fate seems to be in the grass behind the stadium.

A note from Philip Buehner, a trustee, to President J.H. Coleman, dated October 31, 1906, gives an indication that the bell owes its existence to the progressive decay of the tower on old Waller Hall. Buehner writes: "Dear Sir: Your letter of the 31st inst. received, and from what you say, I think it advisable to take down the tower of the main building." The photographs of Waller taken between the completion of the new Eaton Hall (1909) and the fire of 1919 show the absence of the tower and bell. It was the custom for students to ring the bell in its wooden tower by the old gymnasium whenever Willamette was victorious in football.

After the 1919 fire, Waller Hall was reconstructed using the original roof-lines and with a slightly more delicate cupola. This was the home of the Roland until its ignominious removal in 1976.

Something should be done to bring the bell back to campus. Somewhere, some group—perhaps a class returning to campus—will muster sufficient determination, creative ideas, and resources to rescue this important part of the heritage of Willamette from its present resting place.



Dear Sir: Your valued order of the 19th inst. regarding bell to hand and I have ordered the bell shipped direct from the factory to you, as per your request and requested that to carry it as fast as possible, relative to purchase of bells, I attach the regular printed explanation of the factory to this letter, which will give you the information desired in that direction.

With kindly thanks for your order, I have the honor to remain,

Very truly yours,
Z.T. Wright.

WARRANTY
We warrant our bell upon reading any ordinary use, but we make no warranty of ringing being the same under any other conditions. In case of purchase and use of bell, we warrant the bell to be of the best material and workmanship, and we warrant to be of the best material and workmanship, and we warrant to be of the best material and workmanship.



Waller Hall caught fire at 9:30 a.m. on Sept. 16 of 1891, taking Willamette's second bell, melting it to the point where, when the metal was cooled, pieces of the bell were taken as mementoes of the fire. The response to the order for the second bell, and the warranty which would accompany it, are shown in the middle photo. Z.T. Wright and Company, "Importer and Dealer in Machinery, Vehicles, Advance Threshers and Engines" sent the great Roland by rail where it was delivered to the depot on Dec. 23, 1891. Thought to have suffered a fiery death of its own, the great Roland was actually housed in its own special tower shown at left, located at the east end of what was then the athletic field—the area now known as the Quad.

SURVEYING PROSPECTIVE

Take a look at Willamette

GMA Research Corporation did just that through the responses of alumni and prospective students. The results were reinforcing and surprising.

Pollsters, surveyors and researchers tell us continually that "60 Minutes" is the best television show around, and that Oregon State is the best basketball team in the country, and that the last presidential election was a toss-up right up to election day.

Well, two out of three ain't at all bad. Especially if you are conducting research. And if figures and computer technology indeed do not lie, then you will find that professional research is on the right track 95% of the time.

If those seem like heavy duty figures, they are. And that potential for accuracy along with a desire to improve relationships and also discover just how the school is perceived by both its alumni and prospective students, brought Willamette to Portland's GMA Research Corporation.

GMA conducted a summer survey dealing with prospective students and alumni and the results brought in some "clear messages" to the university, many of them surprising and many of them reinforcing.

"We wanted to find out how Willamette measures up in the areas which students and alumni feel are the most important. Actually, Willamette came off looking very good but there are some clear messages telling us some work needs to be done in certain areas," related Larry Large, Vice President for University Relations.

Using randomly selected respondents from lists of prospective students and alumni provided by Willamette, GMA began its interview process in July. The student survey saw GMA conduct telephone interviews with high school students who graduated in 1980. The 395 respondents were divided into three groups—those who did not apply to Willamette, those who were offered admission but did not accept, and those who were offered admission and did accept. The group total was divided evenly between male and female respondents. The alumni survey included 100 respondents in each of four groups—those having graduated between 1900-1950, 1951-1960, 1961-1970, and 1971-1980. The alumni survey also had a 50-50 division between male and female respondents.

The main thrust of both surveys was to discover how Willamette is perceived by prospective students and alumni, and then by comparison, see how those perceptions relate to the way the university perceives itself.

Most Influential Factor In Selecting Attending College
By Student Type

Factor	Total (n=395)	Student Type		
		Attend Willamette (n=134)	Admitted, Not Attend Willamette (n=130)	Not Apply to Willamette (n=131)
Academic Reputation	25%	28%	33%	14%
Quality of Education	21%	25%	16%	22%
Tuition	7%	0%	6%	14%
Campus Environment	6%	7%	7%	5%
Financial Aid	5%	10%	4%	1%
Number of Students	5%	1%	4%	9%
Miles from Home	5%	7%	5%	2%
Personal Attention in Your Classes	5%	4%	6%	2%
Broad Course Offerings	4%	4%	6%	2%
Social and Sports Activities	3%	4%	2%	5%
Personal Attention from School in Recruiting	3%	3%	2%	3%
City Size Where College is Located	2%	1%	2%	1%

Academic reputation rated very high for prospective students along with quality of education. Survey results of the GMA Research study this summer show how the sample (395 total) rated 12 factors in terms of being most influential in their decision determining which college they would attend (above) and 11 factors which were very important to them during their search (below).

Percent of Respondents Stating These Eleven Factors
Are Very Important To Them

Factor	Total (n=395)	Student Type		
		Attend Willamette (n=134)	Admitted, Not Attend Willamette (n=130)	Not Apply to Willamette (n=131)
Quality of Education	87%	88%	87%	85%
Personal Attention in Your Classes	63%	62%	64%	62%
Financial Aid	47%	50%	42%	49%
Campus Environment	43%	43%	46%	41%
Academic Reputation	42%	43%	42%	40%
Personal Attention from School in Recruiting	38%	35%	40%	38%
Tuition	32%	29%	27%	40%
Number of Students	22%	22%	24%	20%
Sports and Social Activities	27%	31%	20%	31%
Miles from Home	16%	15%	17%	16%
City Size Where College is Located	11%	10%	10%	13%

Using a series of questions provided by Willamette, GMA conducted its phone surveys from its central location in Portland. In addition to the phone interviews, two focus groups (one of prospective students and one of alumni) were brought together at GMA to respond more specifically to questions in a discussion format. Although Willamette staff viewed the proceeding (of the student group only), no staff member participated in the focus group, nor was the group aware Willamette was the institution conducting the survey.

Each alumnus was asked a maximum of 57 questions during the survey, while the student survey included a maximum of 43 questions. The alumni survey included questions designed to provide information about several different areas of inquiry. One area concerned what the alumnus knew about the modern Willamette in terms of cost, enrollment, financial aid and so on. Questions were also geared to find information about alumni contributions.

Also covered were areas concerning actions an alumnus might take to help the university, such as contacting prospective students or job placement and what kinds of services the university could provide for its alumni in terms of career counseling, continuing education and other areas.

The survey also provided for opinions on how alumni feel about Willamette.

Questions asked of prospective students dealt mainly with the sources of information they used in finding out about colleges and which of these sources were most believable and influential. Students were also asked to rate the importance of certain factors such as quality of education, academic reputation, financial aid, location and so on. The students were also questioned concerning the most influential factor in their selection process and the importance of the informational and personal contacts they received from Willamette.

According to GMA, the reliability results of the sample size used in the survey indicate that if 50% of the respondents in the survey answer in a particular way, the results will not vary by more than plus or minus 4.8% with a 95% degree of confidence. As the percentage of respondents answering in a particular way drops, the variance also drops with the same degree of confidence.

STUDENTS AND ALUMNI

In the end, it all boiled down to some core messages in both surveys particularly in the way the groups view the university. Topping both groups in importance came academic excellence. Hardly a surprise but still a positive reinforcement for the university, especially when the survey indicated that prospective students view Willamette as being very strong from this standpoint.

"Prospective students indicated to us that they are looking for a school whose degree will mean more to them than a degree from Brand X," stated Large. "In addition, the value of that Willamette degree and the concern for the overall continued academic excellence of the university was strongly noted in the alumni survey."

The Willamette image is indeed a positive one both in the minds of prospective students and in the thoughts of its alumni. Both surveys did reveal some surprising results, however.

"We discovered that in many ways our alumni don't really know us," continued Large.

Large pointed to the fact that most of the alums surveyed aren't knowledgeable about specific aspects of the university. He noted enrollment figures, costs, and the financial aid program as examples. Large also found that the survey showed alumni sometimes do not feel small contributions are important.

Some surprises involving the prospective student survey included the fact many students begin a disciplined search for the right college during their sophomore year in high school, and that students tend to rate the Willamette financial aid program as being weaker than it actually is.

"Both surveys proved valuable in showing us that we need to convey certain facts to prospective students and to the alumni. For instance, we were caught by surprise in the way students viewed our financial aid program. We actually rate very high in comparison with institutions similar to Willamette," Large continued.

The emphasis of the survey was on learning and Large agreed that Willamette learned a lot through both groups. "The next move is ours. We have been assessing what we have learned and now we have to react to the responses we received."

Large noted that the reactions are coming. "Right away we need to demonstrate that Willamette cares for its students and alums equally. Many of our recent graduates do not feel as positive about Willamette as we would have hoped. We need to do more work and find out why, even though we understand that many other colleges have the same problem."

Pointing to the fact that many of Willamette's alums are not familiar with the specifics of the university, Large found an immediate starting point.

"We have to get some specific facts out. We are in the process of amending our communications procedures to get the information across to alums and to potential students."

	Total (n=400)	Alumni Class			
		1900- 1950 (n=100)	1951- 1960 (n=100)	1961- 1970 (n=100)	1971- 1980 (n=100)
My college is a progressive liberal arts college	50%	72%	58%	43%	28%
The education provided by my college is a good value for the money	54%	72%	62%	48%	35%
My college uses alumni contributions wisely	42%	60%	48%	39%	27%
It is appropriate for my college to send me requests for contributions	50%	59%	55%	43%	44%
My college continues to care about me	37%	41%	34%	23%	11%
I am proud of my college	67%	79%	70%	64%	57%
Since I graduated, my college has changed for the better	38%	48%	47%	42%	17%
My college is financially secure	36%	42%	33%	40%	21%
If I had just graduated from high school, I would be attending my college this fall	37%	45%	25%	36%	40%
My college has kept pace with changes in society	36%	57%	39%	21%	18%
My college is the best private college in the region	36%	57%	33%	27%	14%
I thoroughly enjoyed my college years	72%	76%	73%	62%	74%
My college prepared me for a quality life	55%	71%	55%	48%	48%

Willamette alumni responded to the 13 statements above as to whether they were in total agreement or not. The total group included 400 alumni surveyed, and the breakdown by class years is also reflected. Below, alumni indicated the importance of eight factors mentioned by GMA during the survey. The responses indicate a desire for Willamette to maintain a high academic reputation.

	Total (n=400)	Alumni Class			
		1900- 1950 (n=100)	1951- 1960 (n=100)	1961- 1970 (n=100)	1971- 1980 (n=100)
Keep you informed of campus activities	16%	20%	13%	14%	18%
Inform you of changes in faculty and staff	10%	12%	11%	10%	8%
Tell you how contributions are spent	27%	29%	27%	29%	24%
Provide continuing education and seminars for you	17%	17%	17%	20%	13%
Maintain its academic reputation	82%	78%	89%	84%	76%
Provide you with career placement	25%	17%	21%	26%	35%
Sponsor local social gatherings of alumni	4%	14%	12%	5%	5%
Have a recognized sports program	13%	13%	10%	11%	16%

For prospective students the process has included more explicit information in brochures, more emphasis on personal communication, emphasis on the strength of the Willamette academic program and in particular the strength of the faculty, which Large called "the guts of the academic quality of our institution," and more emphasis on reaching students earlier in their selection process.

"We aren't expecting to make any radical changes in what we do to attract students. In fact, the survey confirmed that those activities we currently carry out are successful and the most appropriate," emphasized Large. "Still, there are areas in which we can improve and that is our goal."

The same seems true in response to the alumni survey and many improvements are already being implemented. Stressing specific information about the university is again a key. Large also emphasized that in relationship to alumni fund raising, Willamette wants to make it clear that small gifts are also very important to the university. Large noted the addition of an assistant alumni director—Sabey Grange—and the formation of a class agent program has helped in Willamette's alumni communications on fund raising for the current year. A continuing education program is currently blossoming at Willamette and an alumni scholars program has been started to help recognize the efforts of alumni in the current academic program.

In hopes of making the university more responsive to the alumni needs, records are currently being updated to improve communications.

It's a major attempt to make Willamette more responsive to alumni needs, according to Large, who noted there is "still more to do."

"We want our alumni to feel good about us and to know us. The more they know, the more they are willing to support us and we owe it to them to keep them updated on the shape of the university," Large said.

As a result of the survey, the move has started and will continue.

"We were pleased to hear what the alumni had to say. We want to stress the fact to them that Willamette will commit itself to the best of its abilities to continue to provide a quality education on all levels."

Overall, Large noted that the university was "pleased" with the two surveys. "They have given us information that can be of great benefit to us in communicating what we have to offer to prospective students and to alumni. The study itself doesn't present a picture of Willamette and it doesn't define Willamette, but it does allow us to refer to some well conceived information to help us in specific areas."

By
Steve Lathrop

DISTINGUISHED VISITOR

Government regulation: change and progress

Regulatory reform is a relatively new phrase, according to Dr. A. Lee Fritschler. But it's one that has been catching on and will probably continue to do so.

By
Dan O'Brien

'Regulatory reform' wasn't exactly a common phrase just a few years ago. Little at all was heard about regulatory reform or deregulation in government. Few journal articles were written on the subject and university courses seldom offered it. Regulation in the recent past was a fact of life few chose to attempt to streamline or change.

The decade of the 60s, however, found social movements gaining momentum and capturing greater control over the political and regulatory processes. The regulatory process to which the country had grown accustomed over nearly 100 years of gradual development was suddenly asked to solve a different kind of problem. Regulation shifted from an economic goal orientation to one of social goal implementation.

That is the way Dr. A. Lee Fritschler, Chairman of the United States Postal Rate Commission and a Distinguished Visitor at Willamette's Atkinson Graduate School of Administration in November viewed the process. Dr. Fritschler spoke throughout the week on change and progress in government regulation as he appeared under the auspices of the Elmer and Grace Goudy Chair in Public Administration.

According to Fritschler, the movement toward a free marketplace and reliance upon competition reflects to a certain degree the disenchantment with the traditional operation of the regulatory process and an attempt to inject new life into important sectors of the economy. The decade from 1965 to 1975 was a period of relative prosperity. Many new social and environmental regulations were passed, reflecting popular optimism over the economic outlook as well as an underlying faith in the ability of government to accomplish the many and difficult social problems it was given. More recently, however, this faith has soured, along with the economy.

Dr. Fritschler sees deregulation playing a large part in the regulatory reform movement. Many of the reasons which inspired current regulations have simply disappeared. More than 200 pieces of regulatory reform legislation were considered by the 96th Congress, including efforts to eliminate programs, extend the legislative veto, clip the jurisdiction of various regulatory agencies, and streamline administrative procedures.

In Dr. Fritschler's opinion, competition can be a viable mechanism for assuring that adequate services, reasonably priced, are made available to all, "Regulation over the long run

should intrude government regulators less and less into areas where the marketplace can do the job, and technological developments should be recognized as they make return to marketplace regulation feasible."

Citing the airline industry as an example of successful deregulation, Dr. Fritschler is quick to point out that the benefits of deregulation were not, initially, universally recognized nor was deregulation eagerly anticipated by the industry itself. Basically, deregulation offered the airlines the opportunity to select their own routes and set their own rates. The airlines, however, had developed rather comfortable relations with the regulators and had learned to profit under regulation. Stability was perhaps the greatest single benefit enjoyed by the airlines under regulation—deregulation offered greater self-control and potentially greater profits, but competition also threatened the least efficient with losses.

"Regulation over the long run should intrude government regulators less and less into areas where the marketplace can do the job, and technological developments should be recognized as they make return to marketplace regulation feasible."

When Alfred Kahn was appointed by Carter to chair the Civil Aeronautics Board, he found that the board could deregulate the industry substantially with powers it already possessed. As a result of deregulation, the airline industry profited tremendously, and threatened legal action by the airline industry challenging the CAB actions turned into lobbying efforts by the industry to obtain legislation making the deregulation "official."

In some cases, however, competition increased the incentive to cut production costs and lower prices, thereby decreasing the incentive to be concerned with "externalities." In other cases, competition is not feasible, and some services or benefits will not be provided in the absence of regulation. To what extent deregulation and a relatively free marketplace will provide an answer, only time will tell. Deregulatory initiatives will assure adequate levels of service and sufficiently diverse offerings at reasonable rates only where there is a competitive marketplace. If an industry under regulation is excessively concentrated or cartelized, it is wishful thinking to suppose that abolishing regulation will both create a competitive market and allow its free operation to protect the public.

Dr. Fritschler's experience with the post office's recent decision to become involved with electronic mail services (E-COM) illustrates the dynamic nature of the regulatory reform movement, and how a compromise can preserve the best features of both competition and regulation. Competition in telecommunications was the central issue for the Postal Rate Commission (PRC) with regard to the E-COM decision. A series of FCC decisions had resulted in considerable movement towards an open market for telecommunications services. In addition, the Carter Administration had strongly supported moves toward deregulation and reliance upon competition as a substitute for regulation. Admittedly, E-COM was a new area with which neither the Postal Service nor the Postal Rate Commission was familiar. The Commission was required to balance the benefits of competition against the public policy in favor of

prompt, efficient and reliable postal services. After careful consideration of telecommunications policy, however, the PRC decided that under no circumstances should the Postal Service be discouraged from innovating and offering new means of speeding the mails.

The desire for competition was accommodated by adopting a system operated by the Postal Service with a multiple interconnection arrangement which permits ongoing competition between all common carriers willing and able to provide the communications services for E-COM. The underlying objectives of both the Postal Reorganization Act of 1970 and the Communication Act of 1934 are achieved. Continued regulation assures the quality, quantity and delivery of E-COM services and competition assures the lowest possible costs for these services.

Regulatory reform, according to Dr. Fritschler, is much more than simple deregulation, although deregulation is an important part of regulatory reform. As the E-COM decision illustrates, regulation serves a vital function and must not be allowed to remain static if the objectives of the regulatory agencies and public policy are to be properly served.

A busy three days highlighted United States Postal Rate Commission Chairman A. Lee Fritschler's visit to Willamette's Atkinson Graduate School of Administration in November. Appearing under the auspices of the Elmer and Grace Goudy Chair in Public Administration, Fritschler was a visible and cooperative guest.

Along with informal discussions and class presentations to both graduate students and undergraduates, Fritschler spoke formally on several occasions.

He was featured speaker at a dinner attended by business executives, faculty and friends of the Atkinson School, was the featured speaker at a University convocation and also addressed a luncheon gathering sponsored by the Atkinson School and the Oregon Chapter of the American Society for Public Administration. He completed his busy Willamette schedule as a guest at the Business and Government Roundtable discussion where he offered views on decision-making in Washington, D.C.

A man with a broad background in government and business relations and author of several books, Fritschler was sworn in as Chairman of the U.S. Postal Rate Commission on July 31, 1979. His term expires in October of 1982.

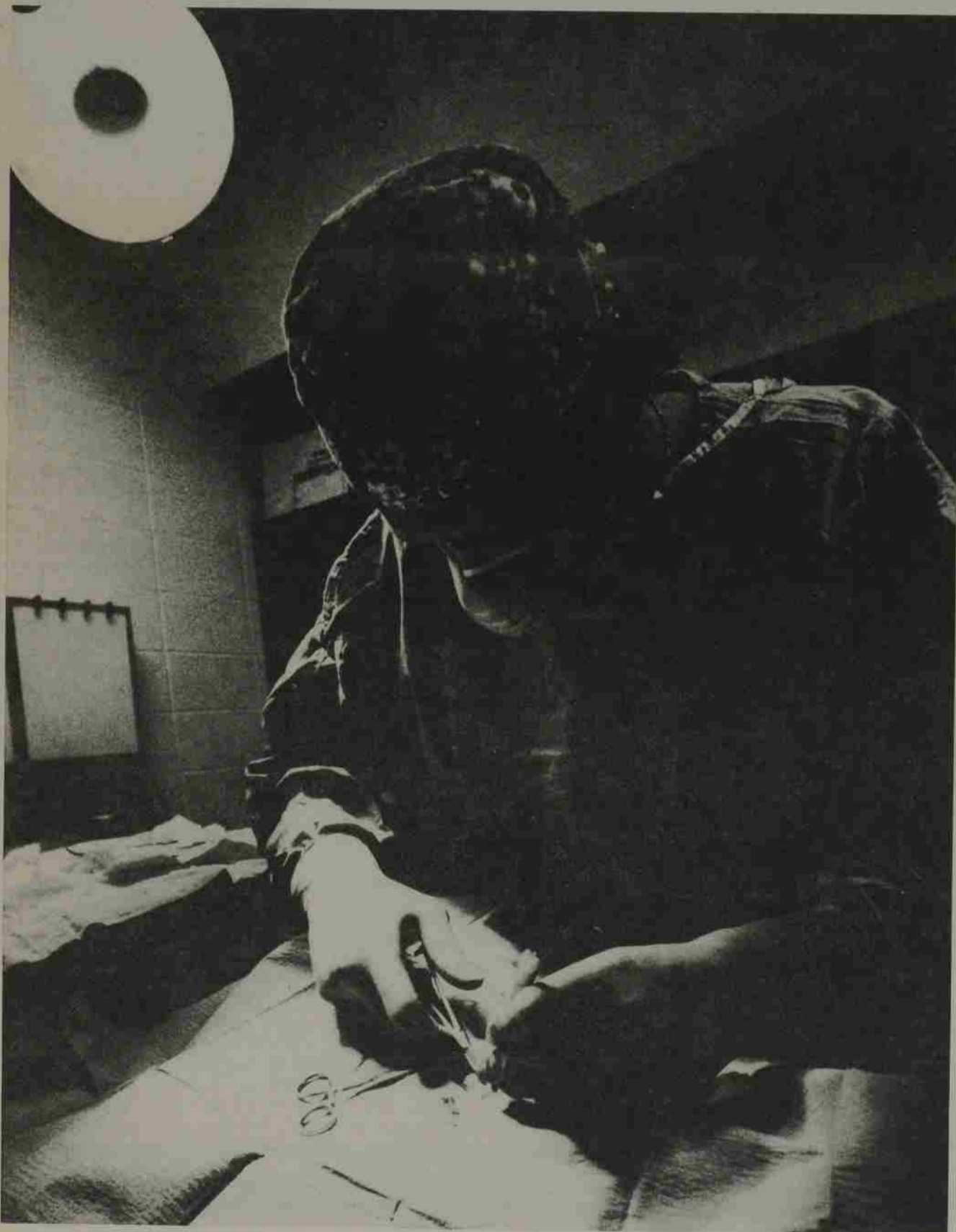
President Carter's greatest contribution to regulatory reform, according to Dr. Fritschler, was the drive to improve regulatory management through procedural changes. Carter implemented the "Regulatory Council," where agency heads and cabinet members may meet regularly to exchange information concerning their operations and proposed regulation changes or additions. He was also responsible for the initiation of the semi-annual "Regulatory Calendar," which lists, on an agency-by-agency basis, proposed regulations, who will likely be affected, what the projected impact will be and relevant dates, times and places of meetings and hearings pertinent to the implementation process. For the first time, successful regulatory techniques may be shared among various agencies for adoption or adaptation to each agency's own particular needs.

AN EYE OPENER

A Willamette Vet

Kirk McNeil is just that and in more ways than one. A veteran of Willamette and a veterinarian by trade, McNeil is "eyeing" a healthier animal world.

By Bob Woodle



When it comes to a veterinary practitioner, Dr. J. Kirk McNeil, '65, is a real eye opener.

For 10 years McNeil has been looking into problem eyes of creatures great and small—from hamsters to elephants.

While the work of an urban vet is predominantly canine and feline oriented, McNeil's practice is a veritable zoo by comparison. And for two good reasons. He's one of only two vets in the metro Portland area with a major emphasis on eyes. And, he serves as the back-up vet for Portland's Washington Park Zoo.

A visit to McNeil's Garden Home hospital in the southwest Portland suburbs is quite an educational experience. The tall, energetic McNeil, a former Bearcat basketball player and conference champion high jumper, has a surgery room ringed by sophisticated medical instruments. Many have some connection to his work on damaged eyes.

His reputation as an eye surgeon is what has brought the **Willamette Scene** on the scene.

"Didn't you operate on a fish's eye once?" we asked. He and his long-time aide-receptionist Irma Eidenschink laugh as they recall a most unusual operation on a lady's pet cichlid, a 10-12 inch long type of sunfish.

"I'll have to admit," McNeil recalls, "I was a bit skeptical, but when she tapped the aquarium and the fish came to the surface for her to rub its belly, I realized it was more than just a 'fish.'" The clincher was when she put her lips to the glass and the fish kissed her from the other side. I knew then I'd have to operate!"

The loving cichlid had an enlarged eye with a damaging fungal infection, so after some research, McNeil prepared to remove the swollen organ.

"We wrapped the fish in wet towels and worked quickly. Irma held it down and I removed the eye and sewed up the hold. In a few minutes it was back kissing its mistress through the glass," he laughs.

While most of McNeil's eye work is done close to his instruments, not all of it is done under the antiseptic conditions of his neat surgery room.

For instance, the zoo vet called one day with some concerns about the eyesight of two of the older Portland pachyderms. By repeating a test administered five years ago that showed the elephants able to distinguish colors, two of the huge beasts "flunked."

How do you check an elephant's eyes? "Not too easily," admits McNeil.

"I needed some pictures of their retinas which have to be taken with a fundic camera in near dark conditions. The trainer herded a few elephants into their enclosure and we shut the door and turned off the lights. While the trainer would get their heads down, I'd squeeze my way between legs and trunks to get close enough with my camera.

"Their eyelashes turned out to be too long to allow for closeups, so we turned on the lights and trimmed eyelashes. We tried again, only this time many of them shut their eyes.

WISE AND WONDERFUL

Charles Atlas couldn't pry open an elephant's eye, but after much coaxing, I finally shot several rolls of film and enough turned out to reveal that indeed the two older elephants showed definite retinal atrophy.

"We had to ask whether this was a normal occurrence with elephants, so I'm photographing retinas of any elephants I can find, including circus elephants that pass through. We need a larger population before we can make any conclusions. So far these are the only two we've found with the problem, which can't be treated. Hopefully, we can prevent it happening in others with the right care," he says.

Because of his special interest, he receives many referrals with eye problems, particularly those requiring surgery. Glaucoma and cataracts, frequent human problems, are also readily found in the animal world. He finds the glaucoma cases particularly discouraging, because "by the time I see them, the disease is usually too far along to save the eye. In less than 24 hours of high pressure the eye is lost," he says.

How can pet owners be alert to the problem?

"It's not always easy to detect, but the progressive symptoms are frequent blinking and tearing, constriction of the pupil, redness of the

"Animals are a luxury item for most people. If they aren't prepared to care for them . . . they shouldn't have them."

McNeil's interest in eye care for animals developed while he was studying for his D.V.M. at the Washington State University School of Veterinary Medicine.

"At that time they didn't have advanced work in ophthalmology, so I studied on my own a lot in the lab at night," he notes.

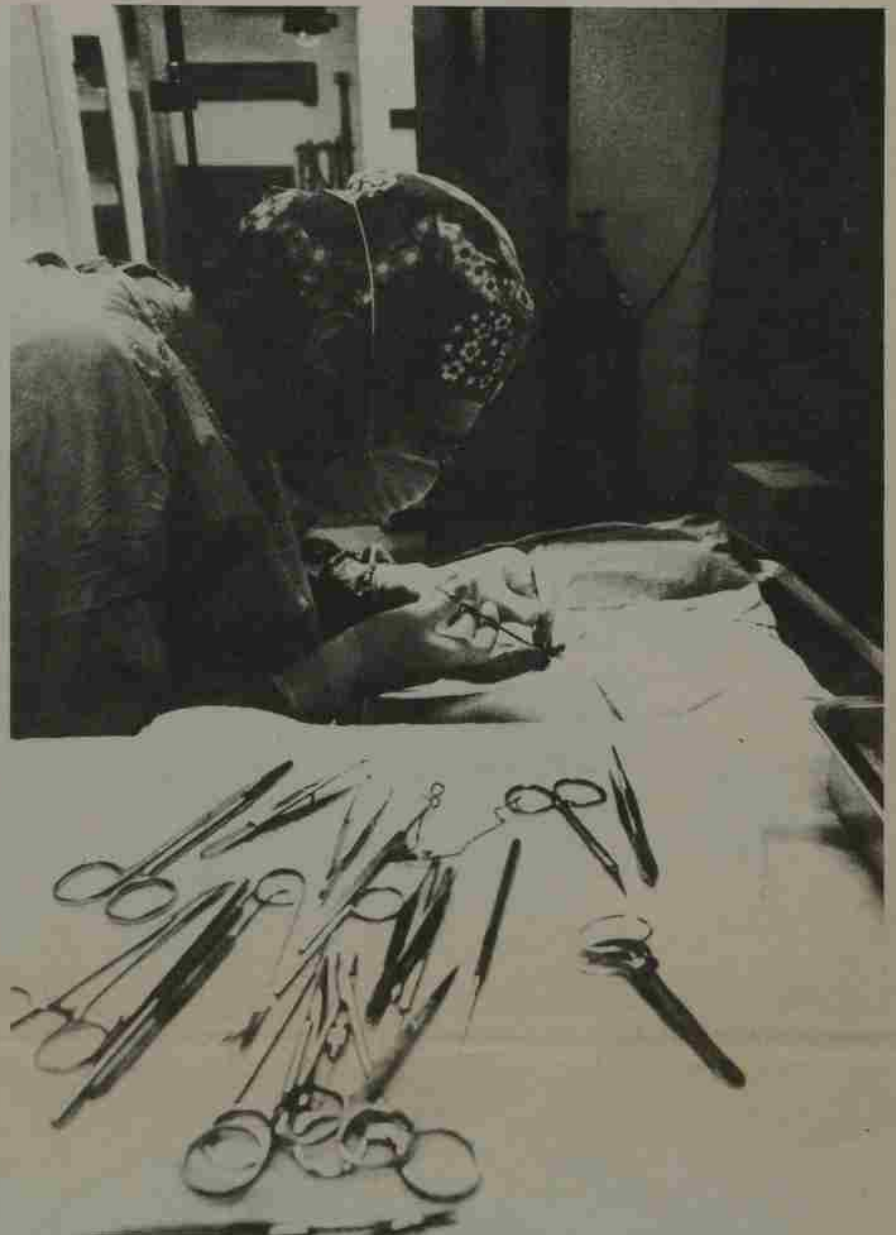
McNeil picked up much of his technique and instrumentation needs by studying with the ophthalmologists at the University of Oregon Health Sciences Center. He's now a member of the American Veterinary Ophthalmology Society and the American Animal Hospital Association.

conjunctiva (white portion of the eye) and enlargement of the globe," he explains.

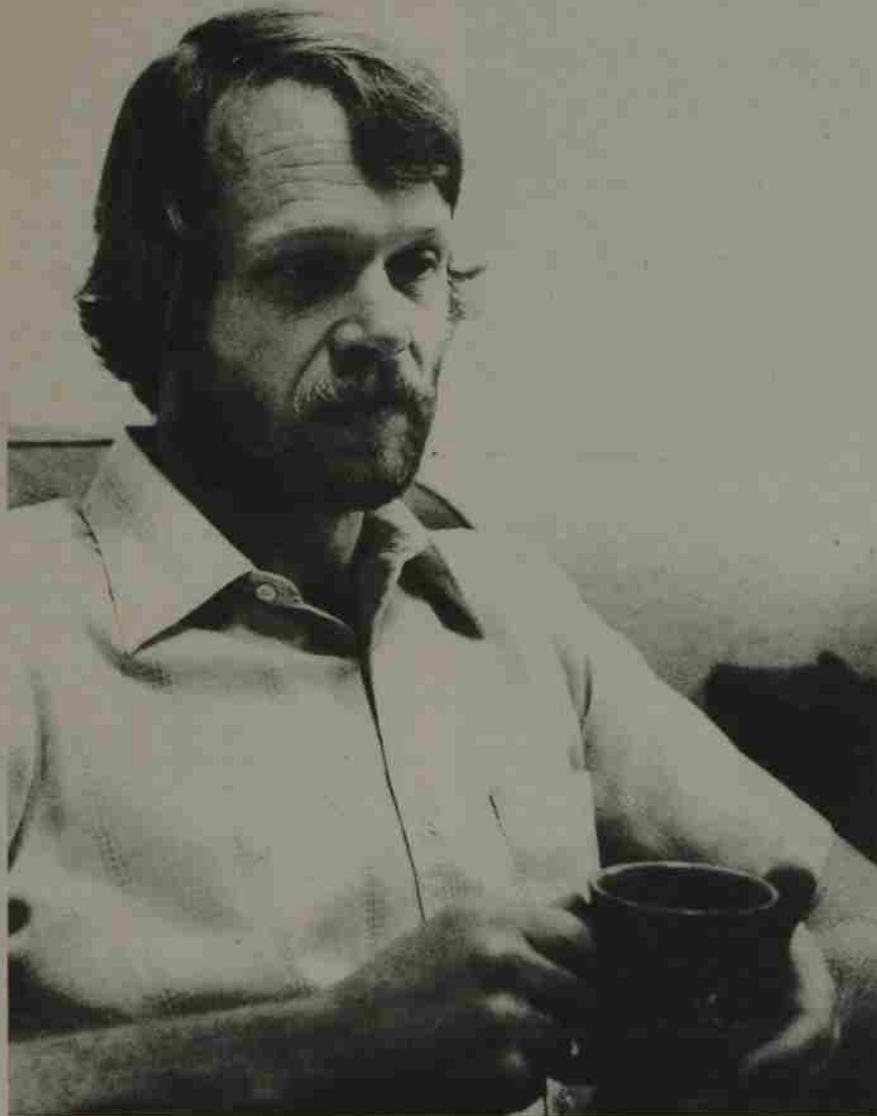
Cataracts are different. The metabolism of the lens changes, causing opacity. He routinely checks the eyes when the animals come in for their annual shots. If a pet develops cataracts, he usually won't operate until sight is lost in both eyes.

"The only solution at present is to remove the lens. That restores enough sight to allow the animal to see movement and avoid running into things," he notes.

How expensive is animal eye surgery? After acknowledging that



Tools of the trade are readily at hand during surgery as McNeil concentrates on some delicate work during a typical day at the office.



there can be many variables, McNeil estimates that most normal eye surgery he performs runs in the \$150 to \$300 range.

The subject of fees, he acknowledges, is always a sensitive issue. Often he'll get calls to find out "how much would it cost to do such and such?" and invariably the next question is "how much would it cost to have you put my animal to sleep?"

That's McNeil's pet peeve. "Animals are a luxury item for most people. If they aren't prepared to care for them properly, they shouldn't have them. I won't destroy an animal that I can repair," he states.

For most pet owners, food and annual shots are the expense items. By keeping immunity high, dogs and cats can avoid the illnesses that require medical attention. Occasionally some unusual disease comes on the scene to prompt attention like parvo, a canine virus that alarmed dog owners nationwide. For dogs, McNeil now includes parvo shots along with the

normal distemper, hepatitis, leptospirosis, and parainfluenza annually and rabies every three years. Cats should have annual shots for panleukopenia, rhinotracheitis, calici and rabies, he notes.

Besides the predominance of dogs and cats he treats, McNeil has had the following patient types at his hospital: hamster, gerbil, guinea pig, cougar, bobcat, monkey, raccoon, possum, skunk, otter, wolf, gazelle, wallaby, snake, bird (including all kinds of predatory birds, since he volunteers his services to the Audubon Society) and lion.

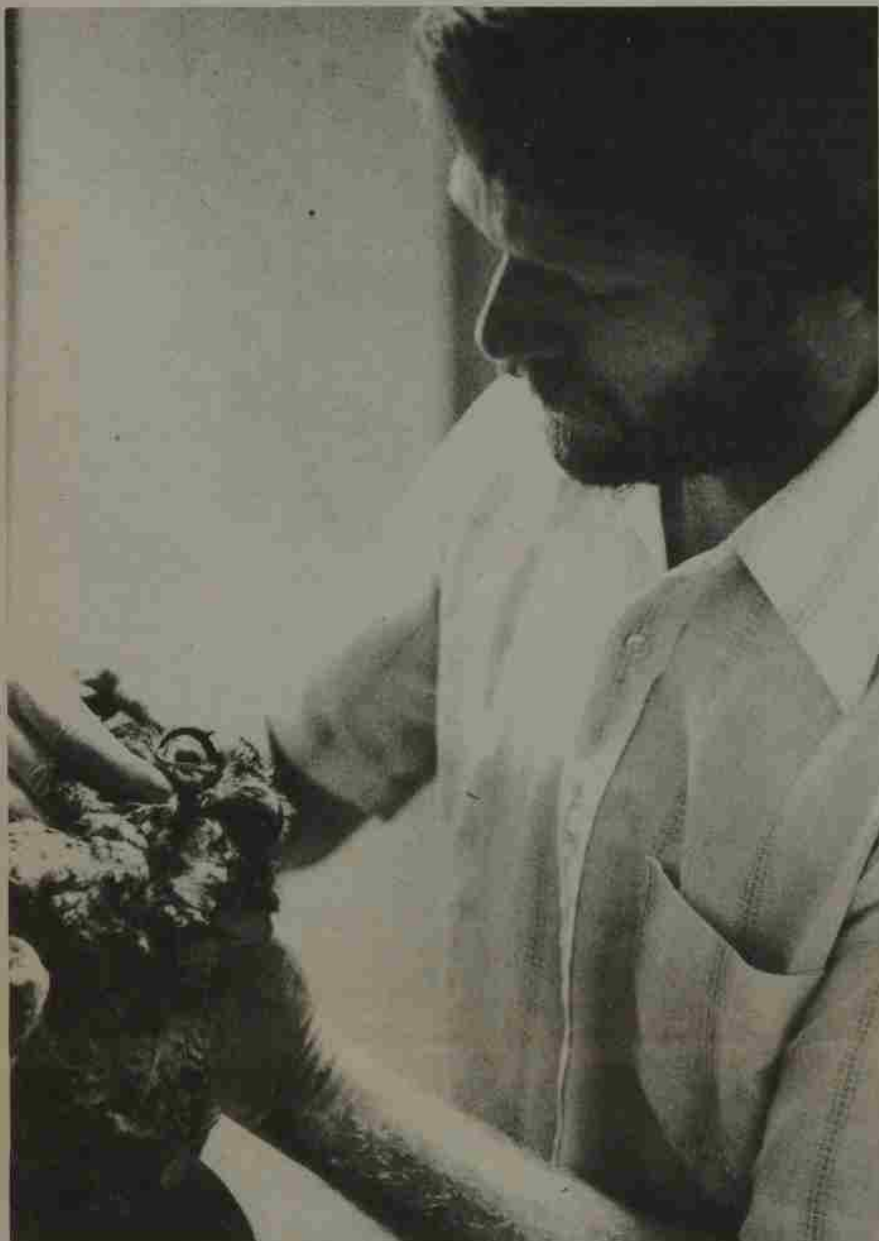
"Lions?"

"Yes, you'd be surprised at how many people have lions," he said. "I had one myself for several months, but Leo is another story," he laughs.

Now the McNeil menagerie includes four dogs—three English pointers that he has trained for his chucker hunting and a collie cross named Heidi ("who ate our turtle!")—two cats, lame-legged Tyler and blind Siamese Sam,

Kirk McNeil is a busy man, but there are times when he can relax and enjoy a cup of coffee and some conversation.

WILLAMETTE VET



An eye specialist, McNeil is able to handle his feathery patient firmly, yet gently. The owl seems very cooperative and takes his eye drops like any human.



and two parrots he's hoping to breed. Wife Cathie and 20-month-old daughter Carrie Ann complete the household.

McNeil, sporting a new beard, keeps physically active with basketball three times a week, some racquetball, skiing and duck and chucker hunting. His skiing pursuits led to a "crazy stunt," he acknowledges. Last year he and four others climbed to the top of Mt. Hood and skied down.

"It was thrilling, but I'd be crazy to do it again," he admits.

McNeil's love for animals developed while serving as a ranch hand for five summers on the Burns, Oregon ranch of State Senator Robert F. Smith, '53. But, he credits his Willamette science professors for helping him along

toward veterinary medicine.

"I was very well prepared," McNeil says quickly, lauding biology profs Monk, Breakey and Springer and chemistry professor Hudak for exceptional help.

"Dr. Hudak nearly flunked me out of school my sophomore year in inorganic chemistry, but he encouraged me and was willing to spend extra time prepping me for organic chemistry. His written recommendation helped me eventually get into vet school. I didn't get accepted the first year, so I got into the Ph.D. program in genetics at OSU. After getting a 4.0 there, WSU accepted me and here I am," he smiles.

And many owners of creatures great and small are glad for such a wise and wonderful veterinarian.

Jim Bortvedt Photos

"I won't destroy an animal that I can repair," says McNeil, who has treated everything from cougars and otters to snakes and even fish.



AREA DIRECTORS

The real nitty-gritty

For Mike Pugh and Lily Driskill that means settling roommate squabbles, unlocking doors, enforcing quiet hours and a whole lot more.

Mike Pugh and Lily Driskill handle the nitty-gritty. At least that's the case when it comes to residence halls. Filling the Area Director of Residences positions at Willamette, the busy duo provide a close link between Dean of Students and Director of Housing Lance Haddon and the residence halls.

The scope of the Area Directors' roles goes beyond counseling and gets to the "nitty-gritty" details as Driskill terms them. Through training programs and an ongoing support system, the directors are able to help residence hall staffs cope with what are seemingly minor, but in reality, important demands of residence hall life.

Things like locking and unlocking doors, enforcing quiet hours and resolving roommate confrontations are regular activities for the Area Directors. It can all get frustrating at times but easy accessibility and frequent informal contacts by live-in professional staff, as well as formal training sessions, are helping to foster an environment for growth and relieve some of that frustration.

The program's goals are lofty and revolve around responding to student needs immediately, creatively, thoughtfully and educationally. And according to Driskill, staff feedback indicates things are working out pretty well so far.

Early problem intervention, monitoring and referrals have all combined to make the program work in terms of minimizing difficulties and in many instances, avoiding them altogether. Discipline questions receive prompt attention and staff has been responding effectively to student conflict within the halls.

Work goes beyond residence hall staff support and supervision. Area Directors assume mediator responsibilities between various boards, councils, committees, Greek organizations and the university administration as well. Driskill points out that the intent is to improve communication and understanding among various university facets. In the past, students have indicated their voices were either unheard or ignored. The Area Directors are attempting to provide a tool with which to remedy those complaints through frequent meetings and attempts to listen to and respond to student needs.

"Sometimes, a caring ear encourages students to decide upon an appropriate solution, and sometimes the Area Director refers students to other information sources or tracks down the answer to an administrative question," offered Driskill.

The rolls of both Pugh and Driskill are indeed difficult to define since an Area Director's best work probably bears no signature. It's that behind-the-scenes work that pays off when residence hall staff and students gain experience and responsibility-use judgement tools.

Driskill points out that a direct result of the Area Directors' constant interaction with residence hall staff and students is reflected in other Student Development staff members' ability to concentrate on their rightful roles. As pressure release valves, the Area Directors are able to relieve some of the duties from the shoulders of the staff. The main focus is on staff training and ongoing support, but counselors also benefit in that they are able to devote more time exclusively to students whose needs require significant professional attention—the hard-core emotional problems according to Driskill. Competition with previous routine conflict situations may have curtailed the amount of support counselors provided special cases.

The position held down by Driskill and Pugh were made possible by a grant from the Rose E. Tucker Charitable Trust. Primary fund allocations from the \$40,000 grant sponsor the two positions as part of a two-year experimental student development program. The program provides for easier physical access to services in the remodeled Bishop Health Center on campus and through the University Program Committee, promotes diverse student activities.

The grant came about as a result of shifts in administrative responsibility made by Willamette in February of 1979, which resulted in increased workloads for student services personnel. Faced particularly with higher counseling and residence hall management demands, the newly-organized Student Development staff sought information and guidelines from colleges similar to Willamette and concluded that Willamette students received less support services than students in comparable



Willamette's Area Directors, Mike Pugh and Lily Driskill have been a positive force within residences this year. Their ability to get at the nitty-gritty problems of residence life have played a big role in supporting the Student Development staff.

institutions.

Other schools typically employ 20 staff members to cover areas which nine Willamette professionals, now manage, including the Area Directors. This information prompted the writing of a proposal to improve student accessibility to support services. The result is the Tucker grant and the arrival of Driskill and Pugh.

Along with the nitty-gritty duties, the Area Directors have helped promote through the University Program Committee many residence activities outside the living quarters, including an auto maintenance workshop, dance lessons, a shopping trip to Portland's Saturday Market, May Day events and a jazz performance.

A recent student survey demonstrated strong interest in outdoor events, but Willamette sponsors few such activities through classes or Associated Students of Willamette University programs. Committee members are seeking to channel funds

primarily into outdoor educational and recreational activities.

The Area Directors have also worked to bring in activities to the residences from outside sources. The directors are encouraging students to think of things other than strictly social activities.

Lausanne Hall students found that they had a mutual interest in track and running and as a result, Willamette track and field coach Chuck Bowles presented an Olympic slide show in the dorm. Lee House conducted a CPR course earlier in the school year.

"We're working hard to promote these sorts of things," explained Driskill.

Although funding terminates this year, staff and students most directly involved with the Tucker grant are not waiting for doomsday, noted Driskill. Instead, they actively promote the positive communications and cooperative student-faculty-administrator endeavors advocated by Student Development philosophies.

Sue Tackmier Photo

CLASS NOTES

Edited By
Theresa Primbs,
Alumni Records Secretary

1927

Mae Tindall taught for 25 years at the College of Education-Bowling Green State University in Ohio. She is now retired and is living in Carlsbad, N.M.

send class news to NewsCat
Grace Henderson DeHarrport
620 Ben Vista Drive, South
Salem, Oregon 97302

1931

Howard and Mary Allen Miller celebrated their Golden Wedding Anniversary on October 18 at the club house of their mobile home park in Hemet, California. The gala affair was attended by a large group of their friends and their family.

Also, I want to call to your attention that as of next May 9, 1981, our class will have its 50th anniversary on Alumni Day, so make plans to attend this very special event. Letters from W.U. will follow.

send class news to NewsCat
Helen Childs deLespinasse
1689 Country Club Circle
Woodburn, Oregon 97071

1934

During the summer **Kenneth and Jane Mackenzie** enjoyed an extensive trip around the Pacific. Their itinerary included Australia, New Zealand, Bali, Singapore, Hong Kong, Shanghai, Peking and three islands in Japan. In Sydney, Kenneth presented a paper at the International Congress on Acoustics. He also attended an associated conference in Auckland.

Lowell and Dolores Gribble recently moved from Heppner to Salem. Lowell has retired but remains chairman of the board of U.P.M.

1939

Lois Burton Cleveland has moved to Edina, Minn. where her husband, Harlan, is to be the Director of Hubert H. Humphrey Institute of Public Affairs at the Univ. of Minn.

Burt W. Preston makes his home in Kirkland, WA. He is the Curator-Arts at Eddie Bauer Inc. in Seattle.

send class news to NewsCat
Eileen Van Eaton Adams
4162 North Rogers Rd.
Spring Valley, California 92077

1940

Al Klassen was one of twenty-one selected to the Governor's Council for Health, Fitness and Sports. The Governor said that the mission of the council is to "encourage Oregon citizens to participate more actively in health, fitness and sports activities that will help them live healthier, happier and more productive lives." Twenty others will serve on an advisory committee to the council. Al is owner of the Rogue River Hardware of Grants Pass. He has served on various committees related to sports and health activities in Josephine County.

1942

Avis Pick Waring has retired from U.S. Civil Service. She and her husband, Ronald, are now living in Merritt Island, FL, where they have subdivided 15 acres and are selling lots.

1949

Charles K. Mills and his wife, Iris, have moved to Glenealy, County Wicklow, Ireland where he is chairman of McElveen & Mills.

1950

Ellen Montague Miller has gone back to drafting (computer drafting) after 30

years of being a housewife and part time teacher. She resides in Santa Clara, CA.

1951

Jeanne duBuy Spaziani is still teaching the second grade in Juneau, AK. Her husband, Dick, is with the Alaska State Dept. of Education. Their two sons are in high school.

1952

Dr. Mary Louise Burum and her husband, sold "Our House," homes for emotionally disturbed adolescents, in July. They are now living in Tempe, AZ. Mary Louise writes that she is "officially unemployed" as she promised herself a year to read, contemplate and regroup.

1953

Rev. Paul and Elois (Roseberry) Jewell are now living in Bend, OR, where he is the minister of the Methodist Church. They write that they are delighted to be living in Bend after three years in Fairbanks, AK.

Rev. Norman and Lola (Brooke '54) Lawson now reside in Wenatchee, WA. Norm was appointed as the senior minister for the First United Methodist Church there after serving as superintendent of the Columbia River District. Lola is teaching the first grade at Columbia School.

William Wittenberg former president of Grandma's Foods Inc. has relocated to Dallas, TX, as vice president of Frito-Lay Inc. which recently acquired the Grandma's Foods Inc.

1956

Rev. Duane and Nancy (Newton '57) Alvord are now living in Chevy Chase, MD. In Sept. he was appointed as rector of St. John's Episcopal Church in Chevy Chase.

John and Barbara (Anderson '57) Bone are making their home in Medford, N.J. John retired from the U.S. Navy on Oct. 1, 1980. He will begin work on Dec. 1 as Project Manager for RCA Missile Systems in Moorestown, N.J.

Chester and Donna (Holm '58) Daniels moved back to Oregon in Sept. after 11 years in New Jersey. Their new home is in Jacksonville, OR.

Delpha Short Hammerle recently moved from Vale, OR, to Roseburg. Her husband is teaching and Delpha is being a housewife.

Yvonne Bowles Sears has moved to Houston, TX, after 11 years in San Antonio. Her husband, David, is chief of the medical service at Ben Taub Hospital and vice chairman of the Dept. of Medicine at Baylor College of Medicine. They have three children: Geoffrey is a junior architecture major at Yale, Cameron is a freshman at Brown University and Andrea is a 10th grader at Lee High School.

1957

Bruce Bleckert of Tacoma, WA, has been elected president of the 1981 Daffodil Festival Board of Directors. He is a seven year member of the Daffodil Festival Board and owner of Custom Photo Service Inc. Bruce also is a photography instructor for Fort Steilacoom Community College and is a member of the photographic course advisory board at Clover Park Vocational-Technical Institute. He and his wife, Mary have four children.

1958

Alberta Nichols Tetrick after receiving a MA in 1977, worked as a counselor in alcohol treatment programs for Benton County Mental Health in Corvallis, OR. She has just returned to graduate school to earn a Ph.D. in Clinical Psychology at the California School of Professional Psychology in San Diego, CA.

Ralph and Coralie (Roseberry '57) Van Horn live in Lake Oswego, OR. Ralph is a senior vice president for Bank of Oregon in Portland.

1959

Joseph V. Stewart is Dean of College of Arts and Sciences at the University of Dubuque in Dubuque, IA.

1960

John Galbraith has returned to Oregon as vice president and chief financial officer for Oregon's State Accident Insurance Fund Corp. For the past 10 years, he has been chief financial officer for insurance companies in Florida.

Larry Sterling is now living in Frankfort, Indiana, where he is plant manager for General Battery Corp.

1961

Gary L. Hollen and his wife, Liz, reside in Gladstone, OR. Gary is principal of the Orient School District in Gresham.

Gary N. Peterson is an attorney with the firm of Peterson & Peterson in Portland, OR.

Dr. William R. Snow is a sculptor, solar designer and president of Pacific Coast Greenhouse Manufacturing Company. He lives with his wife, Susan, and their three children in Sebastopol, CA.

1962

William and Elizabeth (Moore) Palmrose have moved to Cortez, CO. Bill is in charge of safety for the Guy Atkinson Co. McPhee Dam—a \$75 million job. Their oldest son, Chris, is a freshman at Fort Lewis College, Dunango, CO.

1963

John Baker has completed his Doctorate in Education from Nova University, in community college education. He was recently selected by Fremont Rotary as the 1980 Outstanding Citizen of the Year. John and his wife, Vicki, and three children live in Fremont, CA, where he is professor of counseling at Ohlone Community College. His book on children and soccer will be published nationally by the California Youth Soccer Association.

Larry B. Campbell is the general manager of King Radio for King Broadcasting Company in Seattle, WA.

Dr. Robert S. Elder and his wife, Socorro, live in Fairfax, VA. Bob is a senior statistician for Radian Corp.

Robert E. Heryford has opened the Denver branch office for Practicon Assoc., (mechanical consulting engineers) of which he is vice president.

Elizabeth Keyser is an assoc. professor, teaching freshman composition at the University of California, Santa Barbara.

William K. Moore is living in Portland, OR, where he is a salesman for Addco Lease Company.

1964

Dr. Susan Carrell is teaching at the

University of New Hampshire, Durham, N.H.

Rev. Margo Maris is now the rector of Trinity Episcopal Church in Elk River, MN.

Dr. Howard L. Sleeper makes his home in Del Mar, CA. He is a chemist for Marine Ecological Consultants.

Ronald J. Fahl is now Director of Program Development for the Forest History Society, a national, non-profit organization, headquartered in Santa Cruz, CA. He continues as editor of the quarterly "Journal of Forest History."

send class news to NewsCat
Toni Leisure Unfred
2417 Ranch Drive
Springfield, Oregon 97477

1965

Hi Class of '65! I've fallen heir to the reunion questionnaires and will try to cover them all in the coming **Willamette Scenes**. Please do send news about yourself and pictures if you have them.

Kareen Zumwalt Burnard and her husband Thomas have a son, Jeff, 14 years old. Kareen teaches junior high and lists as her most exciting adventure a "trip to Morocco and the Ivory Coast to retrieve stolen goods!"

Arlene Rice Dietz and her family live in Alexandria, VA. Currently she is Study Manager for a Congressionally mandated National Waterways Study.

Wes and Judy (McWain '68) Armstrong live in Alturas, CA, with Aaron, 7 and Shelbi, 5, where Wes is a dentist. They have recently bought a 2100 acre cattle ranch and are building a herd and a log cabin!

Gail McElrath Long and daughter Kimberly, 10, live in Shaker Heights, Ohio. Gail is a social worker and is working in support of the ERA and Freedom of Choice movements.

Dick and Carol (Lutz) Heermance live with sons Richard, Thomas and William in Portland where Dick is a tire distributor/wholesaler.

"Retaining a full head of hair and avoiding midlife crisis" are achievements for **Keith Lovett**, a labor attorney for Albertsons, Inc. in Boise. He and wife **Linn (Chatham '68)** have a 10 year old girl and an 8 year old boy.

John Schwartz, wife Joanne and daughter Allison live in San Mateo, CA., where he is a trial lawyer.

Carl Schneiderman is an Associate Professor of Communication Disorders at Washington State University in Pullman. He and his wife have two children, Jeffrey and Angela.

Once again a student after seven years of secondary teaching, **Alden Jencks** has masters degrees from Claremont Graduate School and the University of Washington and is now after a Ph.D. He is planning to bicycle across the continent in the summer of 1981 and invites anyone who is interested to join him!

Engineering Editor for "Aviation Week and Space Technology Magazine," **Bruce Smith** and wife **Paula (Emery '66)** live in Thousand Oaks, CA, with son Doug, 12 and daughter Gail, 9.

Kirk McNeil lives in Portland where he is a veterinarian. He and his wife, Cathie, have a daughter, Carrie Ann.

Carol Low Woo is an interior designer and calligrapher and has her own business, Design Plus. Husband Conway is a dentist, daughter Doreen, 10, is active in ice skating competition and son, Darren 11, is into competitive tennis. They live in Fresno, CA.

Sally Stone holds a management position with the City of Portland Water Bureau.

Max Boese received a masters degree from the University of Texas, attended Cornell Law School and went to the University of Aberdeen, Scotland on a

CLASS NOTES

Rotary Fellowship. He is now an attorney in Seattle in partnership with Doug Dunham.

Joe and Andrea (Lindsell) Hughes live in San Carlos, CA, with their boys Scott, 10, Jody, 6, and Evan, 4. Joe is an attorney, Andrea a "domestic engineer."

Pat Ranton Lewis says she has become a professional volunteer active in AAUW, Delta Gamma Alumnae, PTA, Lake Oswego Festival/Arts, etc., etc. She and her husband John, have children Cam, age 9 and Corey, age 6.

Bruce Alsip and his wife Vicky live in Bellevue, WA, with daughters Allison, 8, and Amy, 6. Bruce is employed as a business/marketing advisor. He invented and patented a game which was exhibited at the New York Toy Show and in West Germany and is now inventing games for the '81 showing.

Bill Johnson teaches and coaches at Junction City High School. His Girl's Cross Country team took last year's state championship.

1967

send class news to NewsCat
Kathy Kato
3544 S.E. Steele
Portland, Oregon 97202

Shirley Coffield lives in Chevy Chase, Maryland and is a law partner with Reaves and Coffield in Washington, D.C.

Alex and Nancy (Scott) Mandl moved to Jacksonville, FL, where Alex has been appointed senior vice president for finance at Seaboard Coast Line Industries, Inc. Alex had been with Boise Cascade since 1969 when he was a financial analyst, then director, international finance and from 1973 had been assistant treasurer. Nancy sold her travel agency and plans to take it easy. The Mandls, including daughter Melanie (11) look forward to new adventures in Florida.

Genette Buecker Carlton remains in Gig Harbor, WA, and works as an interior designer for Sova Enterprises in Seattle.

George and Jean Lundstrom ('66) Theisen are living in Richardson, TX. George was recently promoted to director of Employee Relations for Steak and Ale Restaurants in Dallas.

Paul ('66) and Carol Thumper Schmidt Huebner, sons Eric (3) and David (1) live in Hacienda Heights, CA. Thumper is head of the English Department at Pioneer High School in Whittier and Paul composes and teaches piano.

1968

send class news to NewsCat
Pete Wallmark
1 Longfellow Pl. #1422
Boston, Massachusetts 02114

Capt. **Anne Woods Jones** has been named assistant professor of military science in the ROTC Department of Wofford College in Spartanburg, S.C. She is the first female officer in the Department of Military Science in Wofford's history. Anne and her husband, Gary, are the parents of two children, Alan (3), and Phyllis (19 months), and reside in Moore, S.C.

Carolyn Leonard Rose and her husband, Albert, have recently moved from Seattle to Sumner, WA, in order to be closer to Albert's new business, Valley Graphics in Puyallup. Carolyn is enjoying spending time at home with their daughter, Theresa (born Aug. 31, 1979). While in Seattle, Carolyn was a computer programmer for SAFECO Insurance.

1969

send class news to NewsCat
Susan Gilpin
7000 S.W. Vermont #508
Portland, Oregon 97223

I wouldn't say it's a highlight of my existence, but, hey, I like getting this paper because I like reading this section. I'm a print freak and nosy, and I just hate it when there's nothing in here about us, so send me your stuff. Here's what I know:

Keith Bauer has formed his own law firm in Salem in partnership with Phil Parks. Those of you at our reunion may recall that **Madge (Baughman)** was great with child and she subsequently gave birth to a great child, Jonathan Hastings, my favorite baby.

Chris Willard writes that he and his wife, Kathy, live in Tacoma, where he is a biomedical photographer at St. Joseph's Hospital. Chris earned a AA degree with honors in that subject earlier this year.

Stephen Weaver is a speech pathologist for the local school district in Duncan, B.C., Canada.

I had lunch last month with my friend, **John Barker**, a happy man. He and Susan have two girls and a house on Sauvie Island with 2 limosines (cows, he tells me). John is a partner in the law firm of Lang, Klein, Wolf, and Smith and still plays basketball every week.

Me? My life continues its swings from the boring to the bizarre. I moved back to Oregon a year ago, went around the world, and came back to be technical writer for Rust Engineering in Beaverton, Kathmandu is looking good again.

Joella Howard Nunn with her husband and two sons reside near Mt. Angel, OR. She has been teaching elementary school half time, but is home this year with their new baby.

Bobbie Jean Weidner took a leave from teaching in San Jose this year to get her MBA and will be at the University of Oregon for two years. She plans to concentrate her studies in management and industrial relations. While attending graduate school, Bobbie is serving as house mother at the Chi Omega house.

Jonathan Hill was recently promoted within the Rialto (Calif.) Schools to program specialist. This position makes him responsible for the management of ESA Titles, school improvement and bilingual/bicultural education programs. Jon writes that he continues to be active in the Porsche Club and ranked first in class for racing wins in Southern California, Arizona and Southern Nevada. Along with this, he edits a monthly magazine for the Porsche Club and writes a monthly column for "Inland Empire Magazine." He resides in Redlands, CA.

1971

send class news to NewsCat
Carrie Ohlson Stevens
13590 S.W. Roan Court
Beaverton, Oregon 97005

I cannot believe that the holiday season is actually here! I feel like I'm a prisoner cook in a fudge and cookie factory, the only hope for parole is unraveling yards of Christmas tree lights! But between dings of the oven timer I'll write what news I have.

A long letter from **Bob Harrison** tells us that he is now minister of Chatterton Hill Congregational Church in White Plains, NY. Bob issues an open invitation to all future "Big Apple" visitors to use his home as a base of operations. He is about 25 miles north of Manhattan. You may rue the day you issued so generous an offer, Bob!

Bruce Beauchamp and his wife Sherry are living in Seattle where he is now a law clerk for Levinson and Friedman.

Ed Temple's long years of study are beginning to pay off. Ed finished his residency and began his practice in July, 1980. If any of you in the Richland, WA area are anticipating additions to the Sandbox Set, you can see Ed at the Tri-City OB/Gyn Clinic.

Laura Steege Manthey and husband **George ('71)** sent a beautiful announcement of their adoption of a son, Scott, born May 1980. Scott joins Laura and George's daughter Sarah, age 2. They are making their home in San Jose, CA where George is teaching.

Anita Moore Krause writes that she is staying home with 5 year old Sheree and 4 year old Jeff in Lake Charles, LA. Anita's husband Tony is a logging field engineer.

I am still chasing around a little 2½ year old and enjoy various volunteer activities but I always have time to relay your news to the Scene. When the Holiday rush is over take a minute to write me a short note—we'd love to know what's happening. By the way, start making your plane reservations for our 10th Reunion.

We can't be that old, can we?

send class news to NewsCat
Timisha and Ray Milojevich
1985 S.W. Leewood Drive
Aloha, Oregon 97006

1972

We have a whole week before our news deadline but because #2 baby Milojevich's "deadline" is any time now, we decided to take no chances of relaying '72 news on to you.

We received a great letter from **Gayle Park Ishima**. She is a supervisor for a CPA firm in Kaneohe, Hawaii (the other side of Oahu). Her husband, Miles, is also a CPA. They had recently purchased a townhouse in Kaneohe. Gayle misses "Oregon's green country" and expressed a concern for it after hearing of Mt. St. Helens' major eruption.

Joseph B. Fuiten also wrote us a nice letter and (oops), we didn't get it included in any of our reports. We deeply apologize and wish ya well, Joe. Please update our information if we have misplaced your letter long enough for you to relocate. On last report Joseph was working with Family Broadcasting Company in developing a TV station for Seattle and working with Mainstream, Inc., a national effort to train youth ministers.

Michael K. Nakada is an economist for the Center for Naval Analysis in Alexandria, VA. He received his Ph.D. in Economics in 1979 from the University of California in Santa Barbara.

James R. Huffman resides in Ocean-side, Oregon where he is a speech pathologist for Tillamook Co. ESD. He obtained his Master's in '76 from the University of Redlands and in the last four years has worked in both Tillamook and Hillsboro. He says he "still enjoys music as a hobby and have done some song writing."

Ray had dinner with **Mike Kesner** in September. Mike owns and operates Mt. Scott Lumber in Sutherlin, OR. "Business is good" reports Mike and he has expansion plans in the near future.

Judith A. Paul is an Assistant Professor of Music at Western Montana College in Dillon, MT. Her position includes piano instruction, band, theory and music classes.

Carol Van Bokkelen is a loan officer for the Bank of America and resides in San Jose, CA.

Lloyd Merryman and wife Bernice reside in Brea, CA. He is a senior accountant for Main, Hurdman and Branstown in West Covina, CA.

Vicki Van Hook Young is a teacher for the visually impaired for the Portland Public Schools. She and husband Chuck, reside near Oregon City and have two children, Angela 3, and Charles, born Nov. 10, 1980.

C. Leslie Green has been appointed Regional Director of Training of Oregon and Washington for Occidental Life Insurance of California. He has been associated with Occidental Life since 1973. Les and his wife, Kathy, and two sons make their home in Hillsboro, OR.

1973

send class news to NewsCat
Garnet Kenyon Elliott
7062 Offenbach Court, N.E.
Salem, Oregon 97303

Dave Ballou is the senior food service director for the Salem School District.



Bruce Bleckert



Alexander Mandl



Anne Woods Jones



C. Leslie Green

Class reunions on tap for Alumni Day, May 9

It's time to start thinking about class reunions if you are among the 10 Willamette classes set to celebrate during alumni day, May 9. The classes of 1931, '36, '41, '46, '51, '56, '61, '66, '71, and '76 all are scheduling reunions during the day's activities.

For the classes of '31 and '56 it will be the 50th and 25th reunion. Most class reunion coordinators have been chosen and those interested in taking part in a reunion are urged to contact

the coordinators or the Willamette Alumni Office.

Class coordinators include Fritz and Grace Henderson DeHarport for the Class of '31, Helen and Malcom Jones for the Class of '36, Dr. Al Ferrin for the Class of '41, Jack R. Brown for the Class of '51, Dale Gustafson for the Class of '56, Stewart Butler for the Class of '61, Kathy and Jim Worden for the Class of '66, Sue Garrison Schneider for the Class of

'71 and Bill A. Olson for the Class of '76. No chairperson has been named for the Class of '46 as of yet.

Addresses and phone numbers of chairpersons and other reunion committee members are available by contacting the Willamette Alumni Office.

John R. Hamann and wife, Peggy, live in Sabastopol, CA. John is the vice president for Jesson Investment Inc. in Santa Rosa, CA.

John R. Hanson, an attorney for Cushing, Haberlach, Hanson and Black, resides in Medford, OR.

Nancy Langworthy is a student at the Antioch Law School in Washington, D.C.

Scott and Patricia Simpson McCormick ('74) live in Salem, OR, where Scott is a physical education specialist teaching at Highland Elementary School and coaching girls' basketball and softball at McNary High School. Patricia works at Salem Memorial Hospital and is kept busy at home with twin, 20-month-old boys.

Kerry J. Pulliam lives in Los Angeles, CA and is associate director of development at the Daniel Freeman Medical Center in Inglewood, CA.

Carol Roberts Schindler and husband recently moved to White Plains, Westchester County, NY, where he works for the Westchester-Rockland newspaper as a writer/editor.

Roger and Nancy (Harvey '74) Barr are moving to Davenport, WA, in mid-November where Roger has been appointed to the Davenport United Methodist Church. Nancy has been doing music therapy on an individual consultative basis. Roger was president of Okanogan County Community Action and served as first vice president of the Washington Association of Community Action Agencies while living in Omak. Roger and Nancy have two daughters, Robin (3) and Cadence (1).

send class news to NewsCat
Kathy Kaster Sampson
1087 N.W. Connell
Hillsboro, Oregon 97123

1974

Kay Barckley was consecrated as a Deaconess in the United Methodist Church on May 25, 1980. She has been appointed to serve as Early Childhood Specialist/Parent Educator and Movement Education Consultant at Temple Day Care Center in Seattle. In April, 1980, Kay was a delegate to the General Conference of the United Methodist Church.

Susan Gilpatrick Taylor writes that she is working as a showroom manager for Grantree Furniture in San Francisco. Susan lives in San Bruno, CA.

Allen Hayward holds the position of Speaker's Attorney for the Washington State House of Representatives in Olympia.

Leonard Mulbry asks that anyone from our class in or near Tucson, Arizona get in touch with him. He's currently a resident in orthopedic surgery at the University of Arizona at Tucson. Last May he graduated from the University of Kentucky School of Medicine.

Rob and Pam Thoits Olson are living in Belmont, Massachusetts. Rob is a research associate at Parsons Lab for Water Resources at Massachusetts Institute of Technology. He finished his Ph.D. at Scripps Institute of Oceanography in August of 1980. Pam teaches science to grades K-5 at an elementary school.

La Vonne Reimer is living in Beaverton and works as an attorney for the Portland firm of Lindsay, Hart, Neil and Weigler. La Vonne graduated JP in 1980 from Hastings College of the Law in San Francisco and then took a "Post Bar exam celebration" trip to the East Coast and Bahamas before moving to Portland in September.

Judy Olson Mousseau just moved to Great Falls, Montana, where her husband is an Air Traffic Controller. Judy is a housewife and mother of two children.

Kristen Wiper Geis has re-enrolled at the University of Oregon in Eugene. She plans to work part-time in the family business, Rest Haven Memorial, and

attend school part-time.

P. Herbert Schmidt is an attorney for the Portland firm of Richard C. Bartlett, Attorney. He also lives in Portland.

Jack LeMenager is now an account executive with the public relations firm of Schorr and Howard Company, handling a variety of corporate accounts both in the United States and overseas. He resides in Westport, Conn.

send class news to NewsCat
Lloyd Bloodworth Newman
1021 Bigelow Street
Olympia, Washington 98502

1975

Stephanie J. Hare is the manager of B. Dalton Bookseller in Lynnwood, WA.

Alice E. Hart received an MA from Pacific Lutheran in school administration in August '79. She is now an elementary PE specialist for the Olympia Public Schools-Olympia, WA.

Debra Mervyn is an engineer for Pacific Power & Light in Portland, OR.

1976

Pamela J. Judy is a medical technician at the University of Oregon Medical School in Portland, OR, and also working on her MS in biology at Portland State University.

Jalaine Madura is living in Salem, OR, and is employed as an executive assistant for the Oregon Arts Commission.

Marybeth Ormsby is an attorney with the law firm of Bruce J. Rothman in Portland, OR.

Marilyn G. Rapp is an attorney with the law firm of Monte E. Hester in Tacoma, WA.

1977

Julie K. Botelho is living in Portland, OR and is a sales representative for NCR Corporation.

Roberta D'Anne lives in San Francisco, CA. She received an MA in Theatre Management from San Francisco State University in 1980 and now works at the American Conservatory Theatre as a fund raiser.

Larry J. Jackson is a full-time student at Lewis & Clark working toward a MME. He resides in Hillsboro, OR.

Valerie B. Jokela is a media assistant for D'Arcy, MacManus & Masius Advertising in Los Angeles, CA.

Donald W. Krogh is living in Tualatin, OR, and is a general accounting manager for Gerlinger Industries.

send class news to NewsCat
Janie Beyer Grossman
3554 Lawrence, S.E.
Salem, Oregon 97302

1978

Hello Classmates! Hope everyone survived the holidays. It was good hearing from all of you and don't forget that you can also send pictures.

Class news from **Carol L. Farnham** is her marriage. She married David Osterloh on February 23, 1980 and is now living in LaMesa, CA.

John F. Dillin left his sportswriting job of three years to obtain his master's degree at Northwestern University Medill School of Journalism in Evanston, Illinois.

While making his home in Seattle, **Chad L. Flieschman** is working as Account Manager at the Burroughs Corporation. Chad was also the winner of the World Series of Poker 1979 in Reno, Nevada.

A trip is planned for autumn '81 for **Robin L. Brandt** and her husband David S. Fish, an American University grad., to Washington, D.C. so they can attend graduate school. Meanwhile Robin is working as a casemanager at Marion County Mental Health and "hanging out" with other WU grads.

Samuel D. Preece is now a student at Oregon State University studying Electrical and Biomedical Engineering. Samuel lives in Corvallis.

Christine E. Hamp is presently employed as an English Literature teacher at Woodsville High School in Woodsville, N.H. Christine worked as a carpenter for Moore Construction Co. in Windham, Vermont for one year and in 1979-80 travelled around the Northwest teaching reading courses to private colleges and prep schools.

Kim R. Salzwedel is now residing in San Francisco and working as an Account Executive for David Publishing Co. in advertising and marketing.

Robert A. Stevens is "enjoying life" while also working as Program Coordinator at the Mt. Angel Training Center.

Having returned to Salem after being in Taiwan for 5 months, **Debra Cleaver** is presently a full-time Social Studies teacher and Head Volleyball coach at McKay High School right here in Salem.

1979

Ben A. Carlile left his position in the Contracts and Regulatory Dept. at Evergreen International Airlines, Inc. in order to form his own distribution firm called Creative Future Company in McMinnville, OR.

Susan K. Kielhorn resides in Portland, OR, where she is in the Consumer Loan Dept. at Bank of California.

Stephen W. Roth is attending the University of Southern California and working towards a MA in professional writing.

Steven K. Rubinstein is working for Lloyds Bank of California as a consumer finance officer at the Chino branch in Southern California.

Jane E. Wallace is a freelance calligrapher in Corvallis, OR. During the past year she has taught beginning calligraphy at the Corvallis Arts Center, Linn-Benton Community College and Oregon State University. In addition, she is a part-time house calligrapher for Uncommon Press in Salem, OR.

1980

Julie M. Campbell is the manager (office, personnel and accounts) of D & B Solar Systems, Inc. in Beaverton, OR, dealing with domestic solar hot water systems, solar space heating, etc.

M. Kathryn Chaimov is living in Portland, OR and is working for The Oregon Bank. She is also currently singing with the Oregon Repertory Singers.

James and Karin (Chapman '77) Fallon are now living in Santa Rosa, CA. Jim is a petroleum engineer for Union Oil. Karin taught at Creswell High School in Oregon for three years and is now planning on substituting a year in California.

James G. Hook is a computer scientist for Bell Laboratories in Murray Hill, N.J. He graduated with honors from the University of Washington in June '80. His thesis will be published as a University of Washington technical paper and in a linguistics journal this fall. Jim plans to attend graduate school next year in computer science.

Cynthia L. Pemberton is the assistant coach at Aulea Swim Club in Kailua, HI. She plans to enter the University of Hawaii in the Spring of '81 on a Masters program in comparative psychology—specific field will be marine mammals.

Kelly C. Smith is a clerk technician for Hood River County Forestry Dept. in Hood River, OR. She recently became a member of the Society of American Foresters.

Tim D. Boatwright is now living in Foster, OR, where he is a teacher at Sweet Home High School.

Atkinson Notes

Richard F. Thompson GSA '76 is now living in Corvallis, OR. He is in regional sales support-personal computers at Hewlett Packard.

George T. Mead GSA '78 is president of Site Design and Developing Corp. in Salem, OR.

Gary A. Strand GSA '79 resides in Salem, OR, where he is the manager of Data Processing for Truitt Bros Inc.

Walter G. Blackford, Jr. GSA '80 is a planning and allocations specialist for United Way of Santa Clara County.

Helen Koba GSA '80 is an internal auditor for Multnomah County Auditor's office in Portland, OR.

Kim A. Wright GSA '80 and his wife, Catherine are living in Seattle, WA, where Kim is an estimator for Impression Northwest.

Law Notes

Oregon Court of Appeals Judge **James R. Campbell** L42 has been named by Gov. Vic Atiyeh to a position on the Oregon Supreme Court. He is replacing Justice **Edward H. Howell** L40 who has announced his retirement. Judge Campbell was originally appointed to the Court of Appeals in March, 1979. Previously, he had served on the Circuit Court, 11th Judicial District, since 1965.

James C. Maletis L53 and his wife, Joann reside in Portland, OR where he is president of James C. Maletis, P.C. From Oct. 3 to 25, 1980, he visited the Peoples Republic of China as a People to People delegate.

Robert Willoughby L73 and his wife, **Janice (Curnow '69)** reside in Bothell, WA, where he is legal and legislative services manager for Snohomish County PUD.

Russell Evans L73 and **Deborah Norwood** L74 live in Seattle, WA. Russ has opened an office in the Pioneer Square in Seattle. Deborah is the law librarian for the U.S. Court of Appeals for the Ninth Circuit in Seattle. She received a Masters in Law Librarianship from the Univ. of Washington in Dec. 1979.

Lawrence R. Lucas L74 is vice president for legal affairs for Evergreen Helicopter in McMinnville, OR.

Daniel and Joan (Glawe L74) Seitz L74 are living in Roseburg, OR. Dan is an attorney with the firm of Anderson, Cegavske and Seitz. Joan is assistant county counsel for Douglas County. They have a daughter, Katherine Eileen, who is one year old.

Thomas J. Nevers L76 is at the University of Washington in Seattle working on a MBA.

James L. Maxwell L76 was recently appointed vice president for Puget Sound Mutual Savings Bank. He and his wife reside in Seattle, WA.

David C. Jory L78 is assistant County Council half-days and Deputy District Attorney half-days in Yamhill County. He makes his home in Lafayette, OR.

David R. Battey L78 was in St. Paul, Minn. for the past two years working for a federal judge. He is now an associate attorney with the law firm of Swenson, Grover, Lewick and Syverson in Alexandria, Minn. Dave and his wife, Lucie, have a daughter, Lindsay Anne who was born April 12, 1980.

Daniel S. McMonagle L80 is an associate attorney with the firm of Taylor & Ulin in Seattle, WA.

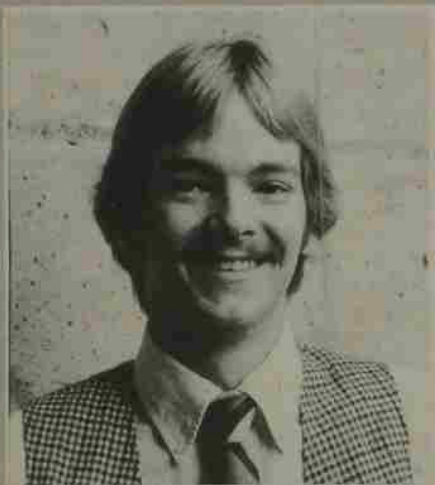
ON THE SCENE

ALUMNI SCHOLARS

Last year the Willamette Alumni Association endorsed a program which would honor alumni and also help worthy students at the University. The Alumni Student Scholars Program went into effect this school year with the selection of 36 students as Alumni Scholars. All those selected for 1980-81 receive cash awards through money contributed to the alumni annual funds in 1979-80. The dollars alumni contribute this school year will be used for cash awards for next year's scholars.

A total of 36 students were selected for 1980-81. Alumni scholars can be in any class, including the entering class. Scholars can be children of alumni or not. The only criteria are financial need and an impressive performance at Willamette or, for freshmen, at their high schools prior to enrolling at Willamette.

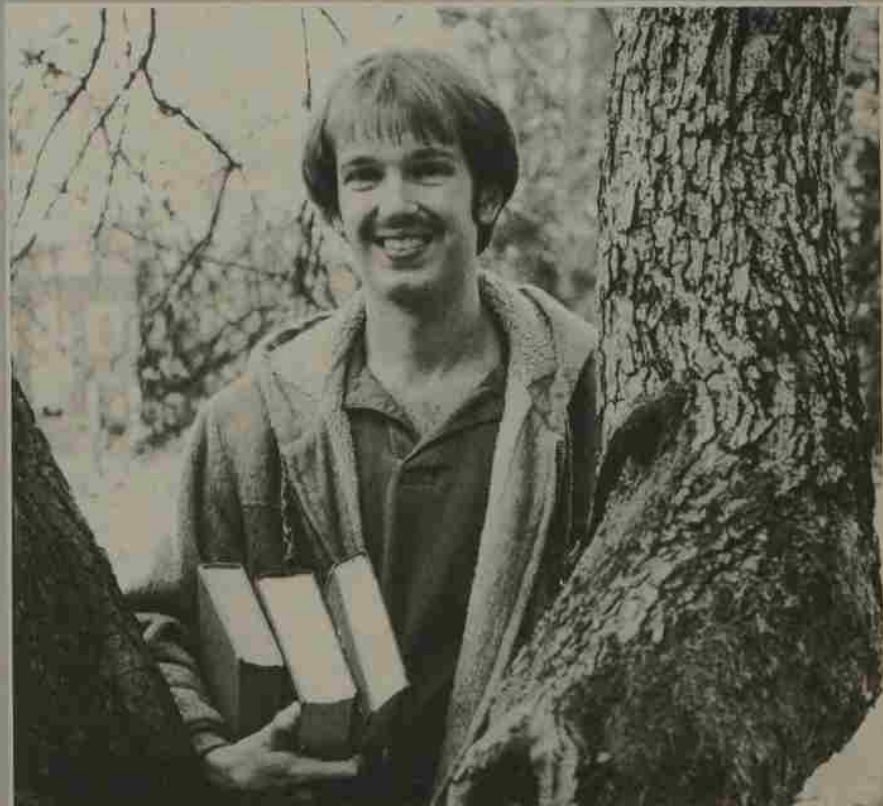
The four students featured in 'On the Scene' this issue represent the sampling of the 36 outstanding students named as Alumni Scholars this school year.



DESTON NOKES

A political science major, Deston is a senior from Bethesda, Maryland, and is president of the campus Delta Tau Delta chapter. He has had two internships at Willamette—one in Oregon with Northwest Natural Gas and another with the United States Senate in Washington, D.C.

He has traveled extensively in this hemisphere, including a trip as part of a Willamette study tour based in Costa Rica. Deston was a member of the committee that screened candidates for the University presidency last year. Both his mother and father are alums and Deston plans to work a year or two before going on to graduate study, possibly in foreign service.



DON KRAEMER

Active since his arrival on campus, senior Don Kraemer transferred to Willamette from Pacific Lutheran University. He graduated from Hillsboro High School, where he was active in student affairs. At Willamette he has served as news editor for the student newspaper—The Collegian—and is an officer of Kappa Sigma

Fraternity. He also serves on the Trustee Development Committee and the President's Advisory Committee.

A political science and economics major looking ahead to a career in public affairs and business, Don has won the Edwin and June Cone Scholarship at Willamette.



DAWN HOFF

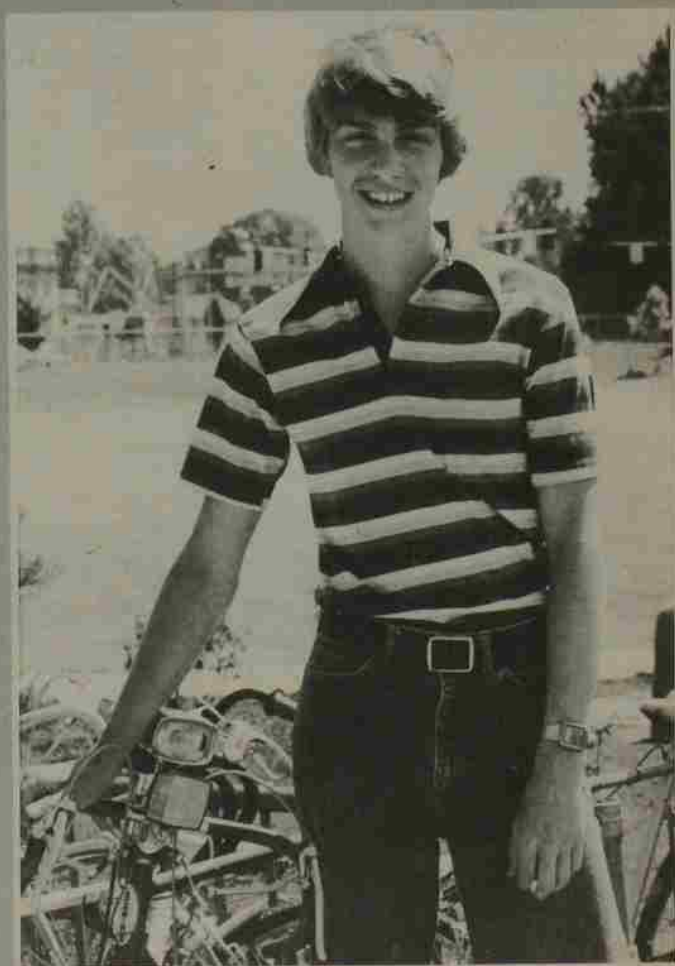
A top student-athlete in high school, Dawn is a freshman at Willamette. She comes to WU from Woodinville, Washington, where she received both a Rotary International Scholarship and the D.A.R. Good Citizen award. She captained her varsity bowling team in high school and also competed in volleyball and soccer. She was named to the Seattle All-Star team in bowling.

At Willamette, Dawn is studying political science and Spanish. She has lived in Thailand, Greece and Germany, which is reflected in her hobby, collecting foreign dolls.

STEVE GILSON

Another entering freshman, Steve Gilson comes from a Willamette family. Both his parents are Willamette graduates and his older brother Mike is a senior at WU. A member of National Honor Society in high school, Steve who is from Salem, was active in many school projects.

A clarinetist for four years, Steve was a member of the All-State Band. He was also a student trainer for all sports during his high school career. Involved in student government as well, Steve served as president of his junior class, vice-president of his senior class and both president and vice-president of Future Business Leaders of America.



WILLAMETTE NEWS BRIEFS

Williams retires after 27 years at Willamette U.

When the Willamette Scene ran stories about retiring staff members last spring, Jean Williams was not included for a good reason: she had not yet retired. However, Jean *did* decide to retire last summer and is now enjoying life while traveling around the country with her husband, Ollie, whose position keeps him out of town much of the time. In fact, when the *Scene* attempted to interview Jean for a few comments about the glories of not working, she was on the road with Ollie.

Jean is truly a Willamette person. She received her undergraduate and master's degree from WU in 1943 and 1967, respectively, and her only child, Bruce, also graduated from here.

Jean worked for the recreation department in Seattle while Ollie was in service. She began at Willamette as an instructor in physical education after acquiring teaching experience at

West Salem Junior High School and on campus as a graduate assistant. At retirement, Jean was an Associate Professor of Physical Education.

At Willamette, Jean is perhaps best known as women's varsity tennis coach, as a faculty member who took great personal interest in individuals and as somewhat of a campus ambassador for the physical education department, in that she attended so many meetings, events and conferences. She taught activities, directed intramurals and handled a variety of teaching and administrative duties over the years.

The four retired people who were featured in the spring issue of the *Scene* had been affiliated with Willamette for a total of 120 years. Add to that the 27 years of teaching by Jean Williams and you have a retiring group with a commitment of 147 years to WU.



Lowry joins Willamette staff

Randolph Lowry has been named as the Assistant to the President and Director of Professional Schools Development at Willamette, it was announced Jan. 5, by Willamette president Jerry E. Hudson.

Lowry will be directly involved in overseeing University compliance with government regulations, contract review and other legal issues and will be responsible for the development and implementation of a program of

increased giving for the College of Law and Atkinson School.

Lowry, 29, received his B.A. in 1974 and M.P.A. in 1977 from Pepperdine University and recently completed his J.D. degree course work at Hamline University. He was previously employed at Hamline, first in the Admissions Office as Director of Community College Programs and then as Assistant to the President.

Glee set for 73rd year

Freshman Glee, that most memorable of Willamette events, is just down the road a ways, and the eventful day of March 14, 1981 will mark the 73rd annual celebration and an ideal way to get acquainted (or reacquainted) with WU.

An exciting week of song and marching competition will culminate with the class competition at 8 p.m. in Cone Field House on the WU campus as classes compete under the theme, "To the Future Through the Past."

Parents and alumni are encouraged to attend. Any alums wishing to get together prior to the Glee contest are urged to contact the Alumni Office on campus.

Tickets are available at \$2 with children under 12 admitted free. Checks should be mailed to the Alumni Office and should be made payable to Willamette University.

Managers for this year's version of Freshman Glee are Dean Olsen, Mike Unfred and Jim Cox.

ARCO honors Atkinson students

The Atkinson Graduate School of Administration recently received \$3,000 from the Atlantic Richfield Company (ARCO) in recognition of students' work on a project stimulated by ARCO vice-president William Marcussen during his visit as executive-in-residence in 1979. Under the supervision of Visiting Professor of Marketing, Roger Best, teams of students prepared papers proposing solutions to a communications problem posed by ARCO. Dr. Best forwarded the six best papers to ARCO. Finding all entries to be meritorious, ARCO made total awards of \$1950 to the teams.

The class found the project challenging, frustrating, and emotional at times as new-found academic tools were applied to the solution of a "real-world" marketing problem. "That's the way it should be," Dr. Best

explained. "Nothing at the graduate level, least of all a near art-form such as marketing, should be taught in an academic vacuum. Projects such as this, where students can see the academic knowledge they've gained take on a real significance, increases the interest level and appreciation of what is being taught."

ARCO's evaluators were impressed with the quality of the projects submitted. Sharing top honors were Ileen Erickson, Barbara Dugan, Judi Heltzel and Mary Pearmine and David Gomberg, Kathleen Dowling, Robert Higgins, Cliff Hockley, and Joan Sahara. Members of the other four teams were: Walt Blackford, Ron Owen and Kim Wright; Mary Schlichtmann, Laurie Hershey and Anne Draper; Randy Adams, Kevin Condit and Dan Fineberg; and David Jerome, Darrell Schuler and Tony DeLorenzo.



Greene essay wins prize

Jo Ann Greene of Salem, has won the \$500 first prize in the Nathan Burkan Memorial Competition at the Willamette University College of Law. The announcement was made in November by Hal David, President of the American Society of Composers, Authors and Publishers.

The winning essay is entitled, "Schludwiler—A Flat Case of Copyright Infringement Served Up As Unfair Competition."

The Nathan Burkan Memorial Competition is sponsored annually by ASCAP in memory of its first General Counsel, who died in 1936. The awards, designed to stimulate interest in the field of copyright law, have been

traditional at ASCAP since 1938.

Greene will also be considered for the National Burkan Awards, to take place at a later date. The recipient of these National prizes, selected by a panel of distinguished judges from among the local Burkan prize winners, will be awarded prizes ranging from \$500 to \$3,000.

At Willamette, Miss Greene participated in the American Bar Association Client Counseling Competition and Mock Trial Competition. She was also the recipient of a KOIN-TV scholarship.

Miss Green is the daughter of Mr. and Mrs. Joseph Greene of Babylon, New York.

BULLETIN BOARD

Campus Calendar — Winter, Spring 1981

ON-GOING EVENTS

January 12 through February 11, Margaret Hays Soft Sculpture, Hallie Brown Ford Art Gallery.
 January 12 through February 14, Dr. Ivan Lovell exhibits in the Putnam Art Gallery, University Center.
 January 14 through February 14, Marge Stephan Exhibits Water Colors, Smith Art Gallery.
 February 14 through March 20, Bruce McIntosh, Photo Exhibit, Smith Gallery.
 February 23 through March 20, Verda Karen Brown, Juried Oregon Watercolor Exhibit, Hallie Brown Ford Art Gallery.
 March 11 through April 11, Betty LaDuke, Art Exhibit, University Center Gallery.
 March 31 through April 17, 2 person exhibit, Barbara Black, Design; Joanne Peekema, Sculpture.
 April 12 through May 2, Art Exhibit: Watercolor Society of Oregon, University Center Gallery.
 April 20 through May 10, Art Exhibit: Senior Art Majors, Hallie Brown Ford Gallery.
 For more information about On-going events, call 370-6463.

FEBRUARY

February 2, WU Friends of the Library Book Sale, University Center, all day.
 February 3, WU Distinguished Artist Series presents Bert Houle and Sophie Wibaux, Mime Performance, 8 pm, Smith Auditorium. For more information call 370-6463.
 February 6, Women's Basketball vs. Pacific University, Cone Field House, 5:30 pm, adults \$2, students \$1.
 February 6, Men's Basketball vs. Pacific University, 7:30 pm, Cone Field House, \$2 adults, \$1 students.

February 7, Men's Basketball vs. Whitman, 7:30 pm, Cone Field House.
 February 9, Intercultural Forum presents Frank Gomez from the State Department.
 February 11, Oregon Symphony Pops concert, 8:15 pm, Smith Auditorium. For more information call 362-8220.
 February 11, Margaret Hays Workshop/Slide-Lecture, Fabric Sculpture, 3:30-5 pm, Art Building.
 February 13, 14, Northwest Conference Wrestling Meet, all day, Cone Field House. For more information call 370-6420.
 February 16, Men's Basketball vs. Linfield, 7:30 pm, Cone Field House, \$2 adults, \$1 students.
 February 16, Community Concert: Music from Marlborough, 8 pm, Smith Auditorium. For more information call 370-6320.
 February 17, Women's Basketball vs. College of Idaho, 7 pm, Cone Field House, \$2 adults, \$1 students.
 February 18, Salem Symphony concert, 8 pm, Smith Auditorium. For ticket information and reservations call 378-0698.
 February 20, 21, Wrestling NAlA NW Area Championship, all day, Cone Field House.
 February 20, Women's Basketball vs. Lewis and Clark, 7 pm, Cone Field House, \$2 adults, \$1 students.
 February 20 and 21, WU Theatre Production: The Learned Ladies, 8 pm, Kresge Theatre. For ticket information call 370-6320.
 February 22, WU Theatre Production: The Learned Ladies, 2 pm, Kresge Theatre. For ticket information call 370-6320.
 February 22, WU Chamber Orchestra concert, 8 pm, Smith Auditorium. For information call 370-6320.
 February 23, Intercultural Forum presents John Perkins founder and director of Voice of Calvary Ministries. Place and time to be announced. For more information call 370-6285.
 February 26, 27, 28, WU Theatre Production: The Learned Ladies, 8 pm, Kresge Theatre. For more information call 370-6221.

MARCH

March 1, American String Quartet concert, 8 pm, Smith Auditorium. For information call 370-6320.
 March 4, WU Opera Theatre: The Medium, by Menotti, 8 pm, Smith Auditorium. For more information call 370-6221.
 March 6, WU Opera Theatre: The Medium, by Menotti, 8 pm, Smith Auditorium.
 March 8, WU Opera Theatre: The Medium, by Menotti, 8 pm, Smith Auditorium.
 March 15, WU Choir concert, 10 am, First United Methodist Church, Portland. For more information call 370-6320.
 March 15, WU Band concert with L. William Kuyper (N.Y. Philharmonic, French Horn), 3 pm, Smith Auditorium. For more information call 370-6320.
 March 18, Salem Symphony concert, 8 pm, Smith Auditorium. For information call 378-0698.
 March 26, Oregon Symphony Pops concert, 8:15 pm, Smith Auditorium. For more information call 362-8220.
 March 30, Men's Track: WU Decathlon, McCulloch Stadium, 1 pm.

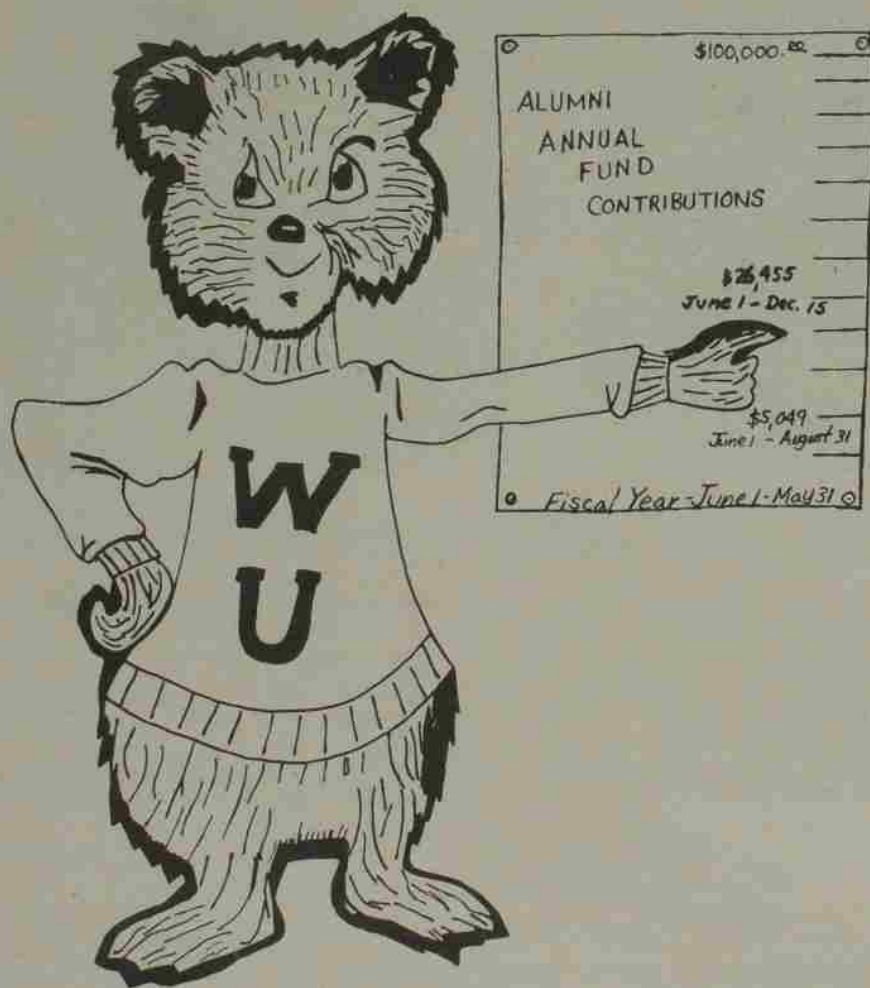
APRIL

April 1, Oregon Symphony concert, 8:15 pm, Smith Auditorium. For information call 362-8220.
 April 3, WU Jazz Ensemble concert, 8 pm, Smith Auditorium. For information call 370-6320.
 April 4, Men's Track: Willamette Relays, noon, McCulloch Stadium.
 April 5, WU Faculty Recital, 8 pm, Smith Auditorium, to be announced.
 April 8, Intercultural Forum presents Jose Limon, Professor of Anthropology and Folklore, University of Texas, Austin. Recognized expert on Chicano Folklore in the U.S. Place and time to be announced. For information call 370-6285.
 April 8, Softball vs. PLU, 3 and 4:30 pm, Sparks Field.
 April 10, Softball Invitational Tournament, noon, Sports Complex.

April 10, Intercultural Forum presents Coleen McElroy, black poet, Professor of English at University of Washington. Place and time to be announced, for information call 370-6285.
 April 10, 11, 12 (matinee performance, 2 pm), 16, 17, 18, WU Theatre Production: The Clouds, 8 pm, Kresge Theatre. For more information call 370-6221.
 April 12, WU Chamber Orchestra concert, 8 pm, Smith Auditorium. For information call 370-6320.
 April 14, Softball vs. Linfield, 3:30 and 5 pm, Sparks Field. For more information call 370-6420.
 April 14, Intercultural Forum presents Cal Chin, Professor of Minority Studies, San Francisco Theological Seminary. Time and place to be announced. For more information call 370-6285.
 April 18, Track vs. Lewis and Clark, McCulloch Stadium, 1 pm.
 April 22, Salem Symphony concert, 8 pm, Smith Auditorium. For ticket information call 378-0698.
 April 24, Softball vs. OCE, 3:30, Sparks Field.
 April 25, Women's Track: WU Trackfest, McCulloch Stadium, noon. For more information call 370-6420.
 April 26, Spring Music Festival: WU Band, Choir and Orchestra, 3 pm, Smith Auditorium. For more information call 370-6320.
 April 27, Softball vs. Lewis and Clark, 3 and 4:30 pm, Sparks Field, for information call 370-6420.
 April 29, Oregon Symphony concert, 8:15 pm, Smith Auditorium. For more information call 362-8220.

MAY

May 1, Special Olympics, McCulloch Stadium, all day.
 May 9, Alumni Day.
 May 10, Baccalaureate, 11 am, Smith Auditorium.
 May 10, Commencement, 3 pm, McCulloch Stadium.



CLASS AGENTS

Half-Century	Mary Eyre
1930	Frances Litchfield
1933	M.E. (Gus) Moore
1934	Helen deLespinasse
1935	Anna Jo Phares
1936	Dr. John Ross
1937	Laurence Morley
1938	Otto Wilson
1939	Art Gallon
1940	Betty Starr Anderson
1941	Mel Cleveland
1942	Maxine Van Wyngarden
1943	Edna Mae Bryan
1944	Sybil McLeod
1945	Emma Lou Donovan
1946	Virginia Barber Barch
1947	Alice Rose Jones
1948	Earl Hampton
1949	Milt Baum
1950	Russ Tripp
1951	Howard Mader
1952	Tom Joseph
1953	Don Scarborough
1954	Don Empey
1955	Ruben Menashe
1956	Dale Gustafson
1957	David Barrows
1958	George Hoyt
1959	Conrad Moore
1960	Wendell Melin
1961	Tony Meeker
1962	Marcia Douglas
1963	Rich Litchfield
1964	Jim Booth
1965	Marvin Case
1966	Jay Grenig
1967	Dave Good
1968	Doug Bosco
1969	Terry Hall
1970	Ann Beard
1971	Darin Goin
1972	Akin Blitz
1973	Sue Klobertanz
1974	Brad King
1975	Bart DeLacy
1976	Anne Pendergrass
1977	Dana St. John
1978	John Dillin
1979	Jeff Swanson
1980	Liz Geiger

Field trip to Florence

A Post Session Field Trip to Florence, Italy for studies in that city will be conducted for Willamette University students and alumni, May 11 through June 7, 1981.

Professors Adele Birnbaum and Roger Hull will be the instructors for the tour. Interested alumni are urged to contact the Office of Academic Affairs on the Willamette campus for further information, applications and program costs.

Office of Planned Giving Willamette University Salem, Oregon 97301

I am interested in learning more about how I can include Willamette in my estate plans. Please send me information about:

- Making a bequest to Willamette
- Gift annuities
- Pooled life income funds
- Charitable remainder trusts
- Gifts of life insurance
- Other _____
(please specify)

I would appreciate the opportunity to talk personally with a representative of Willamette University.

Name _____
 Address _____
 City _____
 State, Zip _____
 Phone _____