

Board to approve Advisory Committee

by Debby Griffin
for the Collegian

An issue that has been a topic of concern for many people here at Willamette University will be addressed Friday at the Board of Trustees meeting.

President Lisensky will ask the Board to establish The University Investment Advisory Committee to make recommendations on investment policies.

The purpose of the committee would be to consider social and ethical factors in the investment selection process.

The Coalition Against Apartheid was formed last summer by three students, Christina Cowger, Wally Rehm and Ron Severson, who believed that although a policy had been adopted the previous year by the board, no action was being taken.

"The issue was important enough to make the whole campus aware of," stated Rehm.

The Coalition needed campus support, Severson added, and started by showing "The Last Grave at Dimbaza" during orientation to make people aware of the apartheid situation in South Africa.

The Coalition then sponsored an Information Day at which petitions were circulated to gather support. The petitions then were presented to the Board at the September 29 meeting while the Coalition

stood in silent demonstration. The Board then asked President Lisensky to study the request and report back at the next meeting.

The Coalition then petitioned the ASWU for funds to conduct a panel discussion and establish a library.

On December 5, the Coalition sponsored a rally featuring three speakers, music and information.

After consulting with the

Coalition, the Endowment Committee of the Board and various groups on and off campus, President Lisensky will propose the formation of a standing committee to investigate the social and ethical considerations in the investment selection process.

In his proposal to the Board, President Lisensky states, "The advisory nature of this committee reinforces the position that the investment responsibilities of the University rest with the Endowment Committee," as delegated by the Board.

The proposed committee membership consists of nine people drawn from the administration, College of Liberal Arts, College of Law and the Atkinson School of Administration and one ex-officio member, the Vice President for Financial Affairs.

The point of dissension that arises between the president's proposal and the Coalition is the membership.

In its counter-proposal the Coalition states, "Unless steps are taken to include trustees and to specify and formalize the relationship of the Advisory Committee to the Endowment Committee, the Coalition fears that the Advisory Committee might serve a purely academic function, without influencing the investment policies of this university."

The Coalition feels this is only the first step in reaching its goals.

It recently received a \$300 grant from the McKenzie River Gathering, a foundation that funds social reform groups in the Northwest.

A National Week of Action, centered around the Sharpesville massacre, is planned in March.



Coalition members discuss plans to achieve goals. photo by Kinyon.



PRESIDENT LISENSKY
photo by McIvor.

WILLAMETTE COLLEGIAN

Volume 90, Number 11 Thursday, January 25, 1979 USPS 684-240 Salem, Oregon 97301

inside...

Election
information
page 4, 5

"Rocky Horror"
review

Bearcats up for #1
page 7

ASWU officers reflect on past year

Editor's Note: Next Monday, January 29, the student body will be presented with 14 candidates vying for political office. The 1978 executive cabinet looks back and comment on the coming year.

by Chris Moore
for the Collegian

Each outgoing officer will miss his office, following Monday's election, but none are dropping student involvement. President Jeff Swanson a senior majoring in English and Speech, is co-editor of the Collegian for spring semester, and has the part of Arthur Miller in WU's upcoming production, *Ah, Wilderness*. Vice President Benjamin

Bradford, also a senior, will complete his major in history. Treasurer Andy Gala, Junior, is general manager for the Kappa Sigma fraternity and will co-direct this weekend's high school speech tournament. Secretary Liz Geiger, also a junior, is working on the newspaper staff and is running for an ASWU office.

Last Tuesday, four very different and strong individuals talked about their accomplishments, frustrations and advice to the people who will be taking over next week.

The Student Senate received attention from each of the outgoing officers. Officers agreed that the

Senate was losing respect, thus damaging the ASWU government.

Swanson's disappointment was that the Senate was content to let the four officers carry out the four officers carry out the school's activities. "They need to question us more often," he said, "and to voice their opinions and those of their constituents." If the Senate understood their potential, the officers felt that the administration offices of the University would have to take note. Gala expressed this well: "If the Senate has a strong voice, the administration can't help but listen."

Other frustrations included the limits on student decision

making and the sometime barrier called "The Business Office." However, the officers made tremendous strides in both areas.

Gala cited his biggest accomplishment as treasurer as taking check-writing authority out of the hands of the Business Office. This came with the transfer of several funds and a threat of being jailed. However, the ASWU officers remained resolute, and the signing of checks is now a part of the student powers.

Swanson felt that a revival of student interest and awareness could be considered his biggest achievement. "The fact that there are 14 candidates running for office, instead of last year's eight indicates a renewed interest," he said. "Maybe people realize that they can have an impact. We've seen a visible positive change."

Bradford believes firmly that "upgrading the quality of entertainment on the Willamette University campus" is his top accomplishment. At a Northwest Independent School Association meeting, he discovered that WU offers more activities for less money than comparable schools, such as Lewis and Clark or Linfield. Specifically, he sees the Tower of Power concert ranking first.

Although the Tower of Power concert was by no means a financial success, Bradford stressed that the ASWU's purpose is not fund-raising. The effect of the concert is that it was a breakthrough.

All of the officers were pleased with the volunteer student committee members. Gala's Finance Board evaluated money requests and administered funds. Just about the only problem the officers saw was the lack of an Activities Board or Interdorm Council. Last year, Bradford decided to abolish it because WU sponsored movies were already selected.

Most WU students will agree that the officers were very accessible. Summing up this point, Geiger said, "Any job is what you make it. If you want to go out and meet the students, that's what you do. And it works."

When asked what sort of leadership Willamette University's students need for the next two semesters, President Swanson answered, "Hard worker...good communicator...someone who can handle conflicts or stress a strong voice for the WU student body."

"This was a very good year," summed up Bradford. "We improved on improvement...isn't that great? I don't want to sound like an egotist, but we did a damn good job."



Outgoing 1978 ASWU officers, L-R, Benjie Bradford, Liz Geiger, Jeff Swanson, and Andy Gala. photo by Graves.

Get out and vote

To those of you who feel the "Tower of Power" concert was a waste of money...to those of you who went and enjoyed...to those of you who feel the ASWU executive and senate are ineffective...to those of you who feel you're not getting your fair share...to those of you who question certain clubs being funded...to those of you who wonder why a louder outcry is not heard when the Board of Trustees decide to raise tuition...to those of you who wonder if the administration listens to students...*Get out and vote.*

This isn't an attempt at drum beating, flag waving, patriotic speech making or what have you. This is a reminder that you pay \$20 per semester for student body fees and it's up to you to decide how that money should be spent.

Now, if this sounds like a "your vote is important because it's your voice in government" speech, sorry, but that's what it's all about.

Maybe you feel that you haven't been given enough time to assimilate facts, form opinions and make an intelligent choice. That's up to you. By running for office, the candidates have stepped into the public eye; their views, to some extent, no longer are private. Speeches will be made and we have provided you with pictures and written statements. All you have to do is listen and read.

We could have made things easier by interviewing each candidate personally, discussing their views and endorsing a certain person. However, we question the ethics of this, since we are partly funded by and are a publication of the ASWU. In the past we have resisted and resented the philosophy that since ASWU funds us, they have the right to determine what the *Collegian* should be.

They have guaranteed in the bylaws of the ASWU Constitution that our opinions are our own, are our responsibility and do not reflect the policies of the ASWU.

If we were to recommend who should be our watchdog, when it is up to the student body to decide if we are doing our job, this newspaper would never get on the right track.

FROM THE PREZ

The decision to run for an ASWU office is a significant one. The rewards are not numerous and the time commitment can be consuming. Yet the forum of student government offers many opportunities not readily available within the classrooms of Willamette. So to this year's candidates for ASWU offices, I salute you and wish you all the best of luck in the upcoming election.

Unfortunately, as I learned the hard way two years ago, not all of these candidates can be elected to one of the four top ASWU posts. But many positions and opportunities still exist for student contributions to the governance and direction of this institution that we all pay so much to attend.

Positions such as membership on the ubiquitous and omnipotent University Planning Committee, which seems to be a stopping point for just about every decision that is made, or not made, on this campus. Then there is the Academic Council, whose past student members raised the quality and significance of their offices during their terms and have paved the way for a more influential student role. The sub-committees where all important matters are supposed to be initiated are roles which don't receive as much public attention, but some of the best student work has been done in these areas. Finally there are the Senate spots. You'll find that the ASWU executive officers will take more of the responsibilities and decisions into their own hands if they are working with a weak, non-questioning group of Senators. Some of you may remember the old McBroom, Dilozenzo and Ingram days when ASWU Presidents were known to tremble before each Thursday night meeting.

VOTE. VOTE. VOTE. And I mean this very sincerely. The balloting system provides ample time in the residences to vote during meal hours, and off-campus students should have no trouble making it to the UC on election day. Don't talk or complain about the election if you don't participate in the process. And besides, I think we owe it to the candidates who are spending the week soliciting your vote, rather than, if I remember correctly, attending classes and studying.

AS FOR OTHER BUSINESS, the Board of Trustees are meeting Friday. They will probably approve University President Lisenski's social responsibility policy concerning investments, especially pertaining to South Africa. There will be two student positions opening on that University Investment Advisory Committee pending its Board approval. The meeting will be held on campus in the fabulous new theatre building.

Concerning the Trustees, I believe we can expect to see yet another inflationary raise in tuition next year. While I'm sure the members will give lip service to wanting to curb inflation, the pressure to keep up with Lewis and Clark and other competing institutions seems to be too great to set an anti-inflationary precedent; one that would seem to be more in line with some of the practices we are being taught. Have we already forgotten the Lily Alternative Futures grant?

Remember to cast your ballot Monday!

Jeff Swanson
ASWU President

How to become a Collegian columnist

by Stephen Roth
for the *Collegian*

As I emerged from a Cat Cavern study session, blurry-eyed and coffee-stained, a nice looking girl came up to me and queried, "Are you Stephen Roth?" After thinking about it for several moments, I shyly replied, "Why do you ask?" She remarked, "Aren't you the guy who writes those humoric letters to the editor of the *Collegian*?" I responded by asking, "What does humoric mean?" Suddenly she burst out into hysterical laughter.

A bit dumbfounded, I questioned, "Why are you hysterically laughing?" She looked up at me, and between giggles, pointed at my boxer shorts (with cupids and faded pink hearts) which were caught in my pants zipper. Needless to say, I became extremely embarrassed.

The situation became much worse, however, when a large crowd gathered around me (some pointing, sneering, and shouting directions) as I unsuccessfully attempted to zip up. After several minutes of fumbling, I finally managed to break the zipper--leaving me open for even more ridicule.

However, being a quick thinker, I proceeded to reach into my backpack and pull out a roll of Scotch magic transparent tape. In a matter of seconds I constructed a secure replacement for my broken zipper. If it wasn't for the fact that I crinkled when I walked, no one would probably have noticed it.

After security had dispensed the crowd, the girl again approached me. She confidently stated, "You must be Steve Roth...right?" I suddenly became engulfed in humility and admitted that I was indeed that person. She moved closer, her dark brown eyes staring directly into my bloodshot greenish-grey eyes, and began to compliment me on, of all things, my style of writing.

Trying to remain humiliated I rather nonchalantly accepted her praise and commendations by simply nodding my head in agreement. However, I began to wonder why she, a complete stranger, was praising me. Perhaps she had heard that my basset hound, Blossom, had recently hit a car head-on and completely totaled it. Was she just trying to cheer me up?

Suddenly her face turned rock serious and she somberly inquired, "Steve...would you like to write a humoric column for the *Collegian*?" I questionably replied, "A what kind of column?"

Noting the puzzled expression on my face, she continued by explaining that she was a representative of the *Collegian*. Sensing a tone of insecurity I swiftly commented, "Hey, I won't hold that against you!" Ignoring my comment she restated her question, "Well Steve, would you be interested?"

In an attempt to score a few points I smiled and teasingly replied, "I'm interested in doing whatever you want me to do." She responded by turning huffy and almost angrily quipping, "Does that mean you'll write the column?" I reacted by nodding my head in the

affirmative and saying, "Yes ma'am." At that point she turned away and briskly scurried off into the depths of the University Center.

You know, I feel a bit insecure about writing a real newspaper column. I suppose the first thing I should do is look in the dictionary look in the dictionary and find out what 'humoric' means.

Editor's note: Steve will be doing feature stories for the Collegian this semester. We're sure you'll be looking forward to it as much as we are.

OPINION

FRANKLY SPEAKING

by Phil Frank



©FRANKLY SPEAKING/ BOX 1523 / E. LANSING, MICH.

Interim Editor Debby Griffin Composition Manager Liz Geiger
Darkroom Manager Andy McIvor Arts and Entertainment Editor Karen Coats Ad Manager Everett Frank Reporters Carol Marquis - Chris Moore - Steve Roth - Dave Dempsey - Anne Deneck - Scott Waddell - Scoff Gustafson Typists/Proofreaders Kristi Dressler - Jeanette Hasley - Debbie Perdue - Peggy Rubel - Lori Schmer

The staff of the *Collegian* is not a select group; it consists of all students, faculty, administrators and interested community members who are interested in submitting articles, letters and opinions so that the *Collegian* can truly be a campus sounding board which opens itself up to all sides of all issues. The contents of this publication are the opinion and responsibility of the staff of the *Collegian* and do not necessarily reflect the policy of the ASWU of Willamette University. Subscription rates \$5 in the U.S.A. Ad rates: \$1.75 per column inch. Contract rates lower. Call ad manager at 370-6224. Second-class postage paid at Salem, Oregon 97301. Published weekly except during exams and vacations.

Puppeteer convo quest

The convocation next Wednesday will be 'The Magic Egg', a colorful enchanting puppet play performed by Bob Williams' puppet troupe of Seattle. The play will be drawn from themes of primitive Slavic mythology and deals with the universal story of the cycle of the year and the rebirth of Spring. The convocation will be at 11 p.m. in Waller Hall, and will be followed by a lecture-demonstration at 3 p.m. there. The lecture

will be about the history, traditions, and techniques of the puppet theatre. This session should be of particular interest to students of theatre, art, art history, and education.

Bob Williams, originator and director of the company, writes all of his own scripts. Besides, Slavic mythology, he has also done extensive research in puppetry in Asia, Europe, and the Americas. Convocation next week will indeed by an hour well spent.

After dinner education

By Debby Griffin
for the Collegian

In an effort to involve faculty members more closely in the lives of students outside the classroom, the offices of Academic and Student Affairs have developed the "Tuesday After Dinner Series."

This is a new co-curricular program developed around six issues of interest to students, it involves the work and talents of 16 faculty members.

The series will take place in residence hall lounges, each segment will begin at 6:30 p.m.

The development of the whole person will be emphasized and opportunities for experimental learning provided.

The next segment, "Self Identity, Sex Roles and Survival," will feature Professors Randy and Carol Ireson and Professor Cari Shay and will take place in the Baxter Hall Lounge.

Welcome back OSPIRG

This term OSPIRG at Willamette will be involved in a number of projects, including lobbying for two bills in the state legislature.

OSPIRG is a student-run public interest organization with groups at most campuses in the state. It has a professional staff, hired by students to help students in research and organization.

Earlier this year OSPIRG circulated petitions on this campus and on other campuses in the state showing overwhelming student support for merit auto insurance. Merit auto insurance legislation would eliminate considerations of age, sex, and marital status in setting rates for insurance. (Presently, a 20 year old male with a clean driving record may spend more for car insurance than a 35 year old man with an accident and a drunk driving conviction.) A merit automobile insurance bill similar to the one that has passed in three states has been introduced into the Oregon Senate and OSPIRG plans to continue its work towards getting it passed.

The other legislative issue

OSPIRG is working on is a bill designed to guarantee people the right to renter's rebates. Renter's rebates are property tax rebates given to people who are renters as of December 31. The law does not say a person has to be renting for a full year - just on December 31. This discriminates against students and other people who tend to move around a lot. The bill OSPIRG is campaigning for would strike that clause from the law.

Locally members of OSPIRG are working on setting up a recycling center on campus, and one member, Shan Gordon, is working on a project dealing with Wah Chang and how they are complying with EPA regulations.

given a number of project proposals which will be considered to each school. They deal with things like RARE II, utility deposits, and Title IX.

If anyone is interested in finding out more about OSPIRG, or has any project ideas, he should get in touch with Rob McClellan at Lee House (6236) or Bob Jenks at Sigma Chi (6361).

KSigs host sixth annual speech tourney

Kappa Sigma is sponsoring its 6th annual high school speech tournament tomorrow and on Saturday. Some 50 schools will be represented, bringing a total of 600 eager speakers.

Andy Gala and Everett Frank will coordinate this weekend's activities. Kevin Adams, judging director, emphasized the need for W.U. students to be especially considerate with directions and advice. "It's a really important tournament for the kids," said Adams. "Most people consider Willamette to pull together an efficient, well-run testing ground for some of the more crucial competitions."

Co-operation is the key

by Leslie Bestor

A few mysterious signs have appeared around campus announcing the formation of a "co-op" at Willamette. This prompted speculations that this "co-op" is a) a health-food store; b) a plan to turn Lee House into a genuine animal house, raising chickens and cows in the basement; or c) a forced-labor dorm. Fortunately, the correct answer is d) none of the above.

A co-op is a type of living arrangement that is cheaper than a dorm because the

students run the co-op. One of the philosophies of cooperative living is that each student is responsible for certain work duties around the house. By working three or four hours a week, the student keeps down the cost of running the house. The co-op is organized and run by the students themselves, not by the University.

Some of you hesitate at the thought of work, envisioning scrubbing floors for three hours, but it's not much more than you'd do if you were living at home or on your own. Duties include keeping the house clean and

helping in the kitchen. Since the co-op will not be on SAGA (one of its greatest advantages), it will hire a cook and students will help in the preparation and cleanup of meals.

A group of students is trying to get a co-op set up on campus for next year. If you want to know more, or are interested in being in the co-op, contact Leslie Bestor at 588-0825, or the Housing Office, ext. 6212 as soon as possible.

Foreign students form club

Amin Kassam
for the Collegian

At the end of last semester, the foreign students at Willamette University got together under the direction of Jim Cadena and Adele Birnbaum, and formed themselves into a body called Willamette International Students. Its main purpose is to help affiliate the foreign students to a body, from which they can interact with each other and at the same time help interact with the whole Willamette community. To this end, the foreign students, who

range from as far as Gambia, Sweden, and Uruguay, will put on slideshows and presentations to which everyone is cordially invited. However, as its coup de grace, it plans to hold a Foreign Cultures Day this spring, which hopefully will become a yearly tradition.

This Friday, at 6:15 p.m., in the U.C., on the second floor, Ruben Ascurain will present a show on Uruguay, to which all interested parties are welcomed.

coming...

WELCOME TO THE JOB MARKET



What's your best bet in today's marketplace? What can you expect from your first job? Need it be a nine-to-five one? These and many other questions related to entering the job market will be discussed in this issue of "Insider"—the free supplement to your college newspaper from Ford.

Ford hopes these tips about what awaits you in the job market will help you start your career off on the right track. And if you're in the market for a new car or truck, we also hope you'll check out the great lineup of '79 Fords.

Look for "Insider"—Ford's continuing series of college newspaper supplements.



FORD

FORD DIVISION

Glee is 'classy' affair

by Chris Moore
Glee Publicity Manager

Preparations for Willamette University's 71st annual Freshman Glee are already underway - at least in the freshman class. Rich Pine, class manager for Glee, reports that freshmen are showing interest and dedication.

Unfortunately, this cannot be said for the so-called "Upper classes." Glee coordinator Elsa Helmick stresses the need for organization and planning within the sophomore, junior and senior classes. If you are interested and feel challenged, contact her at #6306.

The theme for Glee '79 is "Festival of Dreams," and it is important that planning begin now. This year's date for Glee is March 10. The freshman class, filled with bright ideas and unusual vigor, is bound to capture top honors. The big question - and freshman challenge - remains: Who will have to settle for second place?

Candidates stake claims for top ASWU

PRESIDENT



GEORGE ALFORD

I am George Alford and I am a candidate for president of the ASWU. My reasons for running are varied; I am a firm believer in student expressions being taken much more seriously by the administration of Willamette University. In my three years here, some important decisions concerning our education have been made with very little input from the students. A faulty evaluation form that is a little more specific of the professor's ability to perform his/her duty would improve the educational process. My main objective is to be sensitive to the needs of the people. I would represent you, the students.



AMIN KASSAM

To begin, I would like to state that it would be a privilege and an honor to be elected the ASWU President. I apply for the office with the qualifications of having been a senator the past year and also having held a similar position before. As to my projection for the year ahead, my main emphasis will be an increasing student input into the affairs of the Senate. I hope to be able to encourage this by holding referendums on certain critical issues which concern the whole Student Body at large. Finally, I hope to work in close conjunction with the other offices to propagate this point.



JOHN DOLESE

Apathy has been a major topic of discussion during my three years at Willamette. Every year there are long winded essays in the *Collegian* which attempt to postulate a solution. I do not believe that apathy has permanently inflicted the majority of Willamette students, rather, the major reason for this nonchalant attitude has been the absence of aggressive student leadership. I do not wish to pass judgement on the integrity of preceding officers, however, I do believe that the structure of the Senate has many pitfalls which can quell enthusiastic government.

If elected, I will strive to run the Senate efficiently. My major goals will be to increase communication between students, and a whole hearted attempt to improve the library.



LIZ GEIGER

Once again, election time rolls around at W.U., and once again, a number of students have made the move to run for an ASWU office.

Entering into an office requires a certain amount of preparation. The problems and concerns facing an officer are not new to me. For the past two semesters, I have served you as ASWU Secretary. The transition into the new administration needs efficiency, experience, and enthusiasm. I can fulfill those qualities.

My background includes Composition Manager for the *Collegian*, Freshman Glee Publicity Chairman in '77, and student representative for two campus committees.

I can see the problems and concerns new officers will face and ways of improving the last administration's efforts, not with idealistic ideas that *might* work but with efficient changes that *will* work.



JOHN PARTIGAN

Aside from the togaless senator who represents your living organization, how many people do you know who 'get involved' at Willamette? Perhaps the convenient cry of demon apathy is insufficient to justify this phenomenon. I believe that a communications barrier exists between the senate and the student body. I will work towards making our activities, clubs, and publications more responsive (enhancing their popularity). More specifically, any concert, magic show, or graduation guideline will be subject to your careful scrutiny. Please contact me: call or leave a message at WISH (6358). My 100 words have been spent...vote for PARTIGAN!



DAVID J. WRIGHT

Many people talk about leadership, but few are capable of leading. In my years at Willamette, I have worked behind the scenes, learning from others' mistakes. When asked about my involvement, I feel confident telling people that I have taken an active role improving student publications while Sports Editor of the *Collegian*. I learned a need for organization. I have, after months of consideration and communication with students, found a serious need in two areas: student input and administration. To fill these gaps, I have developed an administrative body of experienced student body officials and a wide spectrum of concerned students who will aid me in monitoring and responding to student needs. On a broader level, I will seek out students in every living organization to act as liaisons augmenting the student Senate.

posts--election slated Monday

VICE PRESIDENT



JOHN GALLAGHER

John Gallagher is a Willamette University junior who finally got tired of just watching the way student funds were being used and decided to do something about it. He decided to put his energies into becoming Vice President and devoting the effort that the job demands. John is concerned with the growing trend at Willamette to pay money in order to lose money. Because Vice President is responsible for activities, he feels his hard-working, practical approach to handling his duties will result in activities supported by the campus at large.

Although he has never held student body office at Willamette, John's extensive high school experience combined with an exhaustive dedication to his responsibilities should make for an excellent vice President.



JEFF CAIN

I, Jeff Cain, am running for the office of ASWU vice-president. In the past, I have worked in many leadership positions both in and out of the Willamette community. During the past year I was able to work firsthand with the student body officers at Willamette through the ASWU advisory committee. If elected, I would endeavor to use available funds wisely and to use them for activities involving the entire campus.

ASWU is not a closed entity; its purpose is to serve the Willamette students. As vice-president, I would be representing you and as such, I would be available and open to your thoughts and suggestions.

SECRETARY



CINDY BUNKER

The office of ASWU secretary carries with it a commitment to responsibility involvement, energy, and not in the least, time. My qualifications and enthusiasm for this office, coupled with the confidence expressed by my peers has prompted me to seek this position. The major concern one must confront in accepting such responsibilities inevitably leads to a question of time. I have designed my schedule this semester to assure flexibility consequently I will have the time necessary to do an effective job. I only wish to add that I would appreciate your vote.



KEVIN P. KASEFF

The most important job of the secretary is simple communication between student government and the students. There now exists a breakdown in this area. You, as students pay \$20.00 for student body fees, are you getting your money's worth?

- Also, I have a dream... that there will be:
- A 17¢ rebate for every student.
 - Burning the periodicals and installing beer kegs in the library.
 - Eliminate Head Resident parking and/or Head Residents.
 - Start a dating service for Doney.
 - Relocate the Ram onto the soccer field.
 - Better concerts-Elton John, Rolling Stones, etc.



TANYA MURRAY

In order for a governing body to operate smoothly, its executive officers must be well qualified to accept the responsibilities of their offices. I believe that my experience in Student Government, with which I have been involved for the last eight years, demonstrates my qualifications to become your next Student Body Secretary. My most valuable experiences include offices on my high school Student Congress, my year as a representative to ASWU Senate for Pi Beta Phi last year, and my job of the last year as a receptionist/typist in the Student Body Office. My awareness of the current issues, office procedures, and election procedures due to my experience as a receptionist would be instrumental in achieving continuity in our governing body as well as organizing and managing the Student Body Office staff.

I ask you to look closely at my qualifications and to vote for experience...that's Tanya for Student Body Secretary.



KERRY TYMCHUK

There are two main areas where an effective ASWU treasurer must have experience.

One is to efficiently deal with ASWU finances. Having served as a student senator, finance board member, and having worked for two accounting firms, I feel I have the necessary financial experience.

Perhaps more importantly, the treasurer must deal in public relations; as he represents Willamette on and off the campus. As a speech major, with experience in all facets of communications, I believe that I can listen to student input and speak out energetically as we move Willamette forward into the 1980's.

TREASURER



GOI HONGSAKUL

To make an effective treasurer, it takes organization, fiscal awareness, and an ability to deal with people-I have those qualities. I have been an organizer in numerous capacities ranging from Business Manager of a drama club to Social Director here at Lausanne. From being an auditor at a hotel to working with OSPIRG, I have gained a sense of high finance and limited budget. I feel that I am a very approachable person and, by virtue of this, I feel that I am best equipped to fill this position of responsibility.



ROBERT HINGST

Several of my friends encouraged me to seek the position of ASWU treasurer. I am glad that I heeded their advice not only because of my interest in student government, but also because I feel it would be in the best interest of ASWU.

My experience as treasurer of numerous other organizations will enable me to more readily serve ASWU with positive approaches as well as with lessons learned the hard way.

A candidate for treasurer does not have the aid of a platform with which he can be identified. However, the treasurer is the backbone of any organization and I pledge to be dedicated and hard-working.

ENTERTAINMENT

The Marquee

BY KAREN COATS
FOR THE COLLEGIAN

If you just happen to have a pound of unused rice laying around the dorm room or some "Raspberry Black Delight" lipstick that your grandmother stuck into your purse when you were twelve years old, or a pair of glittered overalls that have been begging to be worn since you picked them up at the Salvation Army two years ago, or if you are a fan of the bizarre and macabre in any form, GET READY! Starting January 30th, the great underground classic *Rocky Horror Picture Show* will begin its stint at the Lyric Theatre, in the remote and culturally lacking village of Salem.

If you haven't seen it yet, you're still a virgin and the following description is meant for you. *Rocky Horror* is a satirical look at the Frankenstein myth and at the "horror" genre of filmmaking as a whole. It is the Frankenstein story with a bizarre twist. This time, Dr. Frankenstein is a sweet transvestite from Transylvania named Frank N. Furter, and his monster is a rippling muscled Golden boy named Rocky. This seems rather off the wall to the uninitiated but wait, the plot thickens. Two innocents named Brad and Janet stumble into Frankie's castle after their car gets a flat and are transported into a different world that threatens their puritanical view of morality.

The plot alone however, does not the film make. Its underground classic status stems from the interesting and memorable characters that inhabit the depths of Frankie's castle. There's Riff Raff, the "faithful" servant and an all around kinky kinda guy; the beautiful Magenta, Riff Raff's sister in crime and kinkiness; and Columbia, an underground Shirley Temple with a streak of masochism. They're just all-around nice kids; the kind you would invite to the church social.

All of these characters aside, the main contributor to the popularity that the film has enjoyed is a man named Tim Curry. As Frank N. Furter, he is the natural resource of the film and his performance is brilliant in its campiness and vulnerability. He is Frankie, the sweet transvestite, and as such he provides a touching look at present day morality and the ever growing underground movement that questions its validity.

Well, now that you know the general plot and its social implications, how 'bout a crash course in viewing procedures. First of all, you need an open mind. Don't go ready to see a masterpiece of cinematic art or ready to compare it with any movie that you have ever seen. *Rocky* is beyond description or comparison and so any attempts will hamper your viewing pleasure while adding to your confusion. Point number two: Don't go expecting to catch everything on the first viewing. This movie takes several viewings and even the veterans pick up something new with every showing. Speaking of veterans, don't let them intimidate you. Audiences tend to be a bit rowdy and the best way to handle it is to mingle right in and join them. Enjoy yourself. That is the key to watching *Rocky*.

As long as I'm giving out instructions here are some practical procedures that will enhance your viewing pleasure and add to the general chaos of the night: Above all, bring some of that unused rice that you have sitting around, or pick some up at the local market. Just watch everybody else and you will pick up the cue for the rice. Next on the list of essentials is a couple of pieces of burnt toast. Yes, burnt toast; don't ask me why just shut up and listen. Assorted necessities and pleasurable additions include: a newspaper, a match or flashlight and a water pistol. Just bring them and watch the veterans go to town, after while you will get the hang of things and join right in. Attire ranges anywhere from jeans to a three-piece Gorilla suit and my advice is to let your imagination run wild. Part of the fun of *Rocky Horror* is crowd watching so let your inhibitions go and join in.

Hmmmm, that about does it for general pre-viewing facts and fun trivia. I leave you with confidence in your own sense of the bizarre. I hope you have enjoyed this little ditty, I know I have. Sooooo, my last bit of advice is: Don't Dream It, Be It. Oh, and don't forget your time-warp shoes, they come in handy on wet pavement and theatre interiors. What can I say? Au Revoir.

Cast For 'Ah Wilderness'

Ah, Wilderness!, a nostalgic romantic comedy by Eugene O'Neill is scheduled as Willamette a third major theatre production of the season. The play is set in a small New England town at the turn

of the century, and has been described by director D. Scott Glasser as "O'Neill's version of the idealized American family."

The cast of *Ah, Wilderness* is a large one, and includes:



Title: Joann by Sandy Brooke

Women's Art Exhibit At Hallie Brown-Ford Gallery

Artists from throughout the Willamette valley are represented at the Oregon Women artists exhibit, up through Feb. 16 in the Hallie Brown-Ford Gallery on the fourth floor of the university Art Building. Gallery hours are 9 a.m. to 5 p.m. Monday through Friday.

Willamette art professor, Mary Ann Johns coordinated the exhibit, the first group women's show in recent years on the Salem campus. Johns looked for variation of media and subject matter when she made the final

selections, she said.

Works by 26 artists can be seen in the show. Among the exhibitors are Sandy Brooke and Serene Greene, co-owners of the Artspace, Portland; LaVerne Kraus, who teaches printmaking at the University of Oregon; Angelita Stover, director of the Newspace Gallery, Corvallis; Nancy Hanna, ceramics instructor at Chemeketa Community College; Nancy Lindburg, of the Oregon Arts Commission; and Lucinda Parker, a painting and life drawing

instructor at the Portland Museum Art School.

Johns also chose pieces by artists lesser-known on the gallery circuit such as Hallie Brown-Ford (oils), Candace Hess (watercolor and ink drawings), Holly Baumgart (bronze casting), Genie Stewart (weaving), Betty Brockman (color photography), Claudia Cave Sumner (soft sculpture), and Michele LaBounty (black and white photography)

Jeff Barr as Nat Miller, Kathryn Minturn as Essie Miller, Jeff Swanson as Arthur Miller, Brian Thostenson as Richard Miller, Lisa Anne Lindburg as Mildred Miller, Gary Gates as Tommy Miller, Ron Dotson as Sid Davis, Sheila Barr as Lily Miller, Don L. Summers as David McComber, Annajo R. Trowbridge as Muriel McComber, James E. Olson as Wint Selby, Linda L.D. Werner as Belle, Shannon Shepard as Norah, David Williamson as Bartender, Craig Clark as Salesman.

Assisting the director will be Pam Shein, and Craig Strobel as Stage Manager. The set designer is Wayne Muller and costumes are being designed by Marsha Cole.

Ah, Wilderness will open on February 23, with performances on the 24, 25, and March 1, 2, 3, and 4. Show time is 8 p.m., Sunday matinees at 2 p.m. General admission is \$2.50, Willamette undergraduates

are admitted free with student I.D. cards. Reservations can be made in February by calling 6221 or by visiting the box-office in the newly renovated Playhouse

SPEECH JUDGES high school tourney this weekend

Friday - 11 am - 10 pm
Saturday - 8 am - 7 pm

CALL KEVIN ADAMS, 6251, FOR INFORMATION

student manager needed

In Food Service 15 to 20 hours weekly. Will relieve Manager on days off and directly supervise student workers. For appointment call Bob at 370-6218 or 370-6350. Salary negotiable.

SPORTS

Cat fortunes turn

by David Dempsey
for the Collegian

While most of us spent the Christmas holidays curled up in front of the fire sipping eggnog and watching the bowl games, the Bearcat Hoopsters were hard at work, bettering their season standings.

The first stop was the John Lewis Classic (Dec. 21 & 22) where W.U. defeated the sharpshooting U. of Victoria, 87-79 in the first game of the tourney. In the championship game however, the Bearcats lost their poise to the Lewis and Clark press and fell behind by 10 at half. They played well in the second half, but came up short, losing by four, 63-59.

The Bearcats were playing together for the first time, as they welcomed three players who became eligible: 6'5" forward Marc Harvey (soph.); 6'5" transfer from N. Dakota State Mike (Hogey) Henderson (jun.); and senior Gary Nelson, a 6'10" transfer from the U. of Oregon. Harvey and Henderson were both chosen for the All Tourney teams.

After enjoying a six day

vacation, the Bearcats traveled to Medford for the Rogue Valley Winter Classic. In the first game, Willamette broke open a close race in the second half to roll over the Hornets of Sac. St. 95-70. Jay Dressler had a career high of 25 points to lead all scorers.

The following night, Willamette continued playing well and blew out Southern Oregon College, 98-77. The Bearcats moved the ball well against SOC's zone and man to man defense. An excellent overall team effort headed by Jeff Novitsky's 26 points brought the Championship Trophy home to Salem. Novitsky and Dressler were named on tourney teams.

The Bearcats returned home Jan. 5 for a rematch with Southern Oregon. Despite the fact that they led the entire game, Willamette wasn't as sharp as their previous outing. Mike Henderson led the club to an 87-77 victory with 18 points. Toby Keady added 16 in his biggest scoring night this season.

The following night the

Bearcats winning streak was snapped by Pacific Lutheran 73-58. Willamette shot poorly, missing inside shots and crucial free throws down the stretch. Pacific Lutheran, pre-season conference favorite, seemed to put it all together; passing well, playing tenacious defense, and crashing the boards.

After a short break, the Bearcats embarked on their Eastern swing. Lots of snow, frozen rain and icy roads made for a long trip. Their first stop was Walla Walla to face the Missionaries of Whitman. Jeff Novitsky opened the game with a scoring spree, netting the Bearcats first 10 points. Mike Henderson hit 8-9 from the floor in his 21 point splurge, and was subsequently named Northwest Conference Player of the Week for his performance. While the big men were enjoying a field day, the guards shot a dismal 1 for 24 from the floor. Regardless, Willamette charted an impressive 89-63 victory and headed for Spokane.

On Jan. 15, the travel-weary Bearcats put together



Bearcats in action against PLU. L-R, Jay Dressler, Mike Henderson, Jeff Novitsky, Gary Nelson. photo by Terhune

a total team effort to knock off Whitworth 76-64. Jeff Novitsky led all scoring with 25 points.

Willamette returned to Salem Sat. night to face Whitman. After trailing throughout the first half, Whitman gained momentum in the second only to once again fall victim to the Cats, losing 66-

60.

Willamette faces the brunt of their schedule Friday, Jan. 26, as they go up against Pacific Lutheran in Tacoma. With Lewis and Clark traveling to Whitman, a win Friday for the Bearcats could place them in first place in the Northwest Conference.

Conference showdown with L&C Saturday

Swimmers face UofO friday

by Scot Gustavson
for the Collegian

The men's and women's swim teams nearly knocked off nationally ranked Central Washington University in nonconference action Saturday. The familiar names of Dumlao, Pemberton and Stamper led the bear kittens with individual wins. Coach

Brik explained, "The women beat the Wildcats in the water, but having to forfeit the diving (no divers) cost us the victory."

Three points were the deciding factor for the men who sorely wanted to splash past CWU. Steve Koga captured a National Qualifying time in the 50 yard freestyle and Andy Taylor set another record in the 1000 yard freestyle. The other indivi-

dual winners, Anderson and Doering, teamed up with Cook and Koga to finish first in the 400 yard free relay.

Earlier this week, the men dominated Portland Community College as the women suffered another disappointing defeat.

The Bearcats face U of O here on Friday and meet the Pioneers in a conference showdown at Lewis and Clark on Saturday.

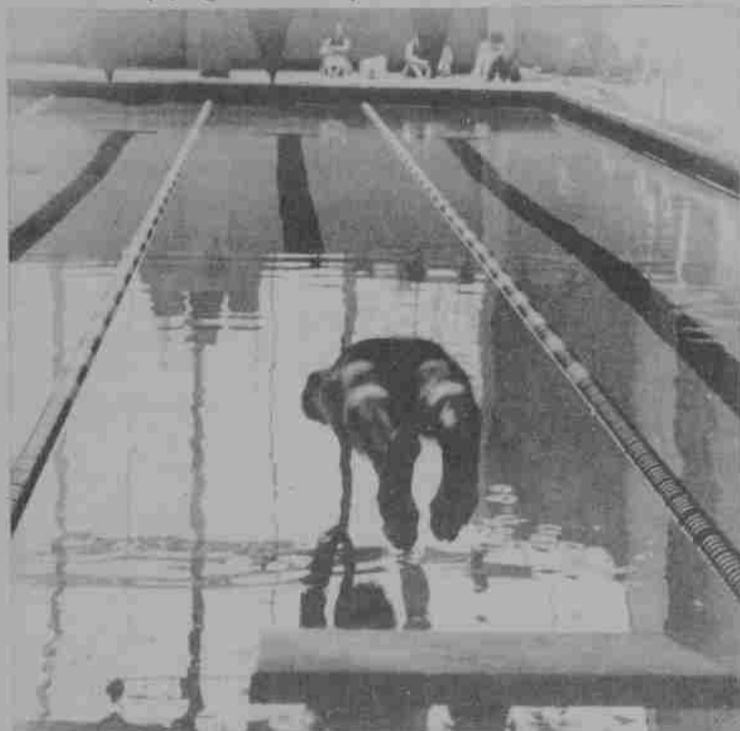


photo by Dumlao

SPORTS CALENDAR

JANUARY


- 26 MEN'S BASKETBALL, Pacific Lutheran, Tacoma
- 26 WOMEN'S BASKETBALL, OIT, Here 7:00
- 26 M & W SWIMMING, U of O, Eugene
- 27 WOMEN'S BASKETBALL, Linfield, Here 5:30
- 27 M & W SWIMMING, Lewis & Clark, Portland
- 28 WRESTLING, WU Invitational, Here (all day)
- 29 MEN'S BASKETBALL, George Fox, Newberg
- 31 WRESTLING, Humboldt State, Humboldt

THANKS WILLAMETTE!

North Pacific Refrigerator Rental thanks you
for your overwhelming support!

**MORE
REFRIDGERATORS**

- Available for immediate delivery
- Limited supply, hurry!
- Free pickup and installation
- Great for your room
- \$25/semester

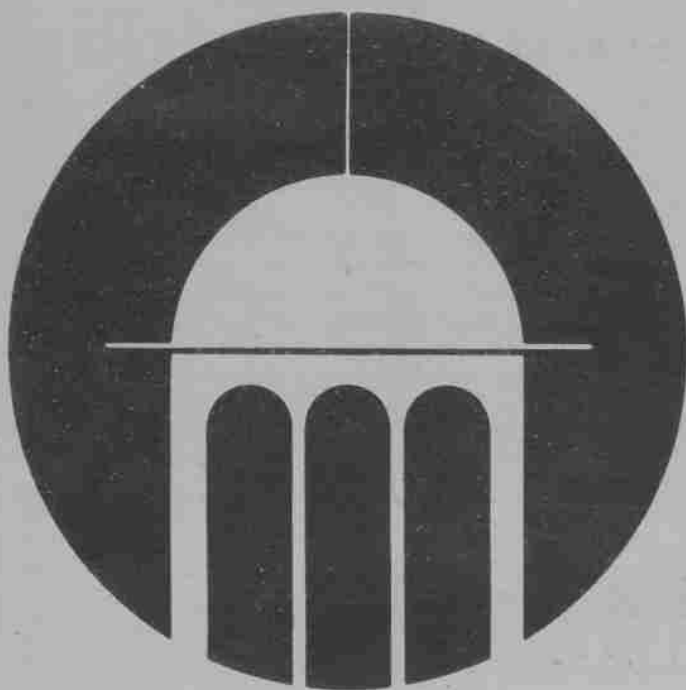


**NORTH PACIFIC
REFRIGERATOR RENTAL**

895 Electric St., Salem, Oregon 97302 • (503) 585-4207

CALENDAR

THURS	FRI	SUN	MON	TUES
<p>"A Day at the Races" and "The Big Store" featuring the Marx Brothers, daily at 7 p.m. at the Lyric Theater, 693 Chemeketa NE, through Tuesday, January 30. Student admission is \$1.50.</p> <p>For those interested in participating on the Women's Softball Team, there will be an organizational meeting at 3:30 pm in the Currey Classroom at the Sparks Center. Contact Linda Garrett, ext. 6423, if you cannot attend the meeting.</p> <p>The annual Potluck Supper held by the Faculty Women's Club will feature a special surprise program tonight in the Cat Cavern. There will be punch served at 5:30 pm and dinner (bread and soup provided) begins at 6 pm. All participants are asked to bring a salad or desert. Cost is \$1.50 per person. For further information contact Phyllis Gillis at 362-0024.</p>	<p>One of Chaplin's all time greats, "The Gold Rush" (1925) will be presented by the WU Film Studies at 7:30 pm at the Film Screening Room in the Playhouse. Admission is \$1.25 or by season ticket (\$20 for 24 admissions).</p> <p>Psi Chi is holding a very important meeting at noon in Waller 30. There will be discussion and election of new members, so maximum attendance is necessary.</p> <p>A discussion and get together for Willamette Catholic students will be held in Walton 109 from 6 to 7:30 pm. Fr. Karl Schray from St. Joseph's in Salem will be there.</p> <p>The Willamette University Board of Trustees will be meeting today at 2 pm at the Playhouse.</p> <p>Create Roundtable meets every Friday in the University Center Conference Rooms 1 and 2 at noon. Coffee and tea are provided.</p>	<p>Candidate speeches at 6 pm in the Autzen Senate Chambers.</p> <p>The group Mithrandir will perform at the ASWU sponsored dance tonight in the Cat Cavern from 9 pm to 1 am.</p> <p>Hawaiian Club meeting at 4 pm in the U.C. Lobby. Important decisions to be made so attendance is necessary.</p> <p>The Coalition will be meeting in the University Center Conference Room 1 at 6 pm.</p> <p>The National Lawyer's Guild at Willamette Law School will present a film based on the 1920's Sacco Vanzetti trial tonight at 7:30 pm in the Cat Cavern. The film captures the atmosphere of the 1920's courtroom and depicts the controversy that continues to rage about the "case that will never die." Free to the public.</p>	<p>Get out and vote. ASWU elections going on all day today. You can vote in your living organizations at lunch and dinner. Off-campus students vote in the U.C. Lobby from noon to 5 pm.</p> <p>Bob Moore, former city manager of Salem, will talk about local government at the turn of the decade at 7:30 pm in Waller Hall auditorium. Moore's talk and five others planned spring semester, are sponsored by the university's Center for Public Policy Studies and have a theme of "City Government in the '80s - A Focus on Salem."</p> <p>There will be a reception in the Hallie Ford-Brown Gallery of the Arts Building for artists participating in the Oregon Women Artists show at 8 pm. The show runs through Friday, February 16. The gallery is on the fourth floor of the Art Building. Free and open to the public.</p>	<p>There will be a Wind Ensemble concert featuring the woodwind choir, brass choir, clarinet choir and wind ensemble at 8 pm. in Smith Auditorium.</p> <p>Buster Keaton's "The General" (1926) will be presented tonight at 7:30 pm in the film screening room of the Playhouse through the Willamette film series. Admission is \$1.25.</p> <p>Paul Tangonan will perform in the ASWU sponsored Coffee House tonight from 7 to 9:30 pm in the Cat Cavern.</p> <p>"The Rocky Horror Picture Show" will premiere tonight at the Lyric Theater. It will be shown daily at 7 p.m. through Tuesday, February 6. Student admission is \$1.50.</p>
WED				



4th annual School of Theological Studies

SPONSORED BY WILLAMETTE UNIVERSITY AND THE UNITED METHODIST CHURCHES OF SALEM
JANUARY 22 and 29 and FEBRUARY 5 and 12, 1979
7:30 - 9 pm

GEORGE PUTNAM UNIVERSITY CENTER
WILLAMETTE UNIVERSITY
COURSES: "ST. PAUL: A NEW LOOK AT THE MAN AND HIS MESSAGE" INSTRUCTOR: Dr. Bernard Batto, Assistant Professor of Religion, Willamette University

"A SURVEY OF THE LIFE AND THOUGHT OF TEILHARD DE CHARDIN" INSTRUCTOR: The Reverend Tom Whitehead, Pastor, First United Methodist Church, Salem.

"THE DEVELOPMENT OF THE BIBLE AND THE HISTORY OF ITS USE AND INTERPRETATION IN THE CHURCH" INSTRUCTOR: Dr. James Hand, Professor of Religion, Willamette University.

"BIBLICAL RESOURCES FOR ETHICAL LIVING" INSTRUCTOR: Dr. Myron M. Hall, Ecumenical Ministries of Oregon.

"THE CHURCH: REFRESHED, AFLAME, AND ALIVE!" INSTRUCTOR: The Reverend Winston R. Hull, Associate Pastor, First Presbyterian Church, Salem.

TO REGISTER: Contact the Office of the Chaplain, Willamette University, (370-6213) no later than noon on Monday, January 22. Registration Fee: \$3