

New president greets class of '73



Looking toward the future...

PRESIDENT ROGER J. FRITZ, at the Tuesday faculty meeting, stated, "... We will

never allow ourselves to become embittered by (change). We must capitalize on it -- we must use it as an instrument of education."

Frosh, Fritz enter "new era"

A new era was ushered in Tuesday night as the new Willamette University president, Dr. Roger J. Fritz, officially welcomed the class of 1973 at orientation ceremonies.

Speaking to over 400 incoming freshmen, Dr. Fritz emphasized that he too was starting his experience at Willamette. He stated that in order for this experience to be a successful one, one that would bring about the constant change and improvement that a modern university must be prepared to undergo, mutual understanding and co-operation between president and students must be established. "How can we learn from each other?" he asked, "I'll help you understand me, if you help me understand you -- your personal aspirations -- the responsibility you will personally take for improvements -- your ideas about what is desirable for the University. . . We must find areas where common interests converge into constructive action."

Dr. Fritz also directed his attention to a problem common to all universities -- that of student power. He stated that students are ready for more power and influence in the university, "when they earn it -- when they assume responsibility both individually and in groups." He warned, however, against being an activist just for the sake of change.

In conclusion, Dr. Fritz urged the freshmen to make the most of the educational opportunities offered by Willamette. He charged that the quality of learning would depend as much on their attitude toward the educational system as the faculty members who present the information to them.

Earlier in the day, President Fritz addressed the faculty for the first time. There, he stressed the importance of the faculty at the university level, "If students are the blocks with whom we build the future of this institution, then you are the adhesive and cohesive influence which assures that a quality emphasis will be maintained throughout that entire future."

He further pointed out that the university must look toward the future. Today, "Leadership... requires a careful identification of strengths and the capability to build on them. In other words, we will accomplish little lamenting our inadequacies. We know we have strengths; we must capitalize on them." These strengths such as a larger and stronger faculty and an increasingly alert student body indicate, Fritz noted, a dynamic outlook for Willamette University.

Another key point in his afternoon session was his position towards change, "My hope is that we will individually and institutionally use change to our own advantage -- that we will never allow ourselves to become embittered by it. We must capitalize on it -- we must use it as an instrument of education."

The policies and philosophies

forwarded by Dr. Fritz on Tuesday reflect the six goals he outlined during the investiture ceremony July 31. (1) to lead in the development of a learning society, (2) to bring out the latent capabilities of students and those who work with them, (3) to attract and retain outstanding students, faculty and staff members, (4) to establish clear goals in the highest priority areas of service and determine appropriate measures of progress toward meeting these objectives, (5) to assure faculty, students and administrators that we want each other to succeed, and (6) to clarify our mission, to interpret the past, cope with the present, and plan and build for the future.

He closed the ceremonies by stating that "We must assume our share of responsibility for perpetuating areas of strength and improving those aspects which need it. I am looking forward to everyone who is challenged not only by his educational goals but by our institutional objectives as well."

ASB President urges involvement

Also on hand with President Fritz Tuesday night was Associated Student Body President Bill Bennett. Bennett emphasized the importance of student responsibility and student involvement. Pointing out that Willamette is changing and that there is need for more change, Bennett stressed that this change and progress will occur only if the student commits himself to university life and takes on the responsibility of becoming involved in social and educational activities.

Films, blue gin billed for weekend

With the end of Orientation Week comes a weekend of exciting entertainment. Friday night is highlighted by two movies in the Fine Arts Auditorium, "The Ip-press File" starring Michael Caine of "Alfie" fame followed by "The Seven Faces of Dr. Lao" starring Tony Randall. Saturday afternoon following the Student-Faculty picnic will be the annual Freshman-Faculty softball game at 3:30. The afternoon will be climaxed by a Picnic supper at 5:30 p.m. All afternoon activities will be held in Bush Pasture Park near McCulloch Stadium.

The weekend concludes on a musical note as "The Blue Gin" from Portland provides the music for an 8-12 dance in the Gym. Admission to all activities is free.

Forum to replace convocations

Bitterly resented in years past, the required Wednesday morning Convocation Series will be replaced this year by the Willamette University Speakers Program, a project designed to bring lecturers of both general and more specific interests to the Salem campus.

The University Forum, to be held at 11 a.m. on selected Wednesdays in the Fine Arts Auditorium, will feature seven distinguished speakers and subjects ranging from drug abuse to film critique.

The series will open on October 15 as philosopher-educator Dr. John R. Searle will speak on "Confrontation and Confusion on the American Campus." Dr. Searle is a professor of philosophy at the University of California at Berkeley. He has been active in student affairs, was the leader of the faculty group during the Free Speech Movement and recently became Special Assistant to the Chancellor for Student Affairs.

Forum attendance will be voluntary and the public is invited to attend without charge.

A second part of the program will present various lectures on topics of less than campus-wide interest. The announcement of dates, times and places for these engagements will be made on short notice through the campus

and community newspapers.

The University Speakers Program was formulated with three objectives in mind: to stimulate discussion within the academic community; to provide educa-

tional and cultural experiences serving to broaden knowledge and enrich campus life; and to create an atmosphere of inquiry to encourage the pursuit of interests beyond the normal academic program.

Attendance swells as 1600 enroll-- a record

Willamette University will awake from its summer slumber this week to greet a record enrollment in its 128th year.

Registration is expected to exceed 1,600 for the first time and may go as high as 1,650. Last fall's enrollment was a record 1,570.

President Roger J. Fritz is among the campus newcomers, although he's been on the job since Aug. 1 after succeeding Dr. G. Herbert Smith. Dr. Smith, now chancellor of the university, served as president for 27 years.

Some 500 freshmen and transfer students are currently involved in orientation week, while 162 first year law students registered Thursday and attended an orientation assembly Friday. Registration for new undergraduates is Friday, while returning

students register Monday, the same day classes start in the Colleges of Liberal Arts and Music.

Law students will start classes Tuesday, with an expected enrollment of 350, also a record high.

Music enrollment may reach 85, according to Dean Charles Bestor, with nearly 50 freshman music majors.

Twelve new faculty members and five administrators were welcomed for the first time Tuesday at the year's first faculty meeting. The total includes two law teachers, one new music instructor, and nine teachers in the College of Liberal Arts.

Administrative positions, in addition to the presidency, were filled in admissions, financial aid, Dean of Women, and Chaplain.

Willamette Collegian

Official publication of the Associated Students of Willamette University. Second Class postage paid at Salem, Oregon, 97301. Published weekly except during vacation and examination periods. Phone number 581-1641, extension 224. Business Manager, Akin Blitz, extension 251.

Rick Landt
Editor

Catherine Ingram
Publications Manager

the potential is there

"You people are potentially the finest group of students ever to enter Willamette University during its long history." This is at least somewhat similar to the fairly characteristic official greeting to the freshman class.

The thing that makes this at once meaningful and meaningless statement particularly interesting is the similar state of the entire university. Willamette has a tremendous potential which in past years has not been sufficiently realized. The potential of the University, like the potential of the freshman class, is necessary to attainment, but does not guarantee attainment.

The similar bittersweet dilemmas of the University and the freshman class (and the other three classes as well) are peculiarly adaptable to one another. Hopefully, the University will be a place where the freshmen may begin to fulfill their potential. At the same time the freshman class should assume a major role in the effort to develop Willamette to its potential greatness.

letter policy spelled out

COLLEGIAN policy regarding letters to the Editor is as follows: letters must be submitted by Monday, and should be typewritten and double-spaced. Letters should not exceed 250 words. Letters in excess of that length will be printed only if, in the opinion of the editor, special interest justifies their printing.

Pala coffeehouse--different

Unique among Salem's attractions is the Pala Coffeehouse, located conveniently to Willamette University in the basement of the First Methodist Church. It features folk and rock music, hot beverages, people, and if you are a chess freak, there's that too.

Friday and Saturday nights Pala offers some of the best folk singers in the Northwest. Tuesdays and Sundays are openstage nights and anyone wishing to sing, read or rap may use the stage. Wednesday nights will soon offer a chance to discuss, with involved persons varied subjects such as the draft, drugs, conservation and civil liberties.

The coffeehouse was started with a fold-away stage, one room and an idea in January 1968 by a small group of Willamette University students.

With the demise of the Vagabond House, outside interest grew. A permanent stage was built, a new sound system added and a regular schedule of entertainment offered. The Pala is now operated as a joint venture of Willamette students, the Council of Churches and local members of the Salem community.

The day to day operations are handled by volunteers from the University and community. Since many of the present workers will be returning to schools outside Salem, new volunteers are constantly needed.

Appropriately named, Pala offers enjoyable alternative to the bars, beer parties and movies of Salem.

Trio of profs will spend year on sabbatical

Missing from the ranks of the Willamette University faculty this fall will be three professors granted sabbatical leaves for study and research.

Dr. Charles Derthick, professor of psychology, will be investigating recent developments in his field at major universities in Austria, England, France, Germany, and Switzerland.

Dr. Norman Huffman, professor of religion, will be doing a post doctoral study of Asian religions at the Harvard University Center of World Religions.

German professor Dr. Otto Mandl will spend the year at the University of Munich researching and writing a textbook of the German Language.



KATIE HAGGERTY performs regularly at Pala. The coffeehouse is located in the basement of the First Methodist Church on the corner of State and Church.

U. center scheduled for opening in december

The long-awaited George Putnam University Center, currently arising to the tune of jackhammers and screeching cranes on Mill Street across from sorority row, is in the final stages of construction and should be finished in December.

The center is named for George Putnam, a former Willamette trustee and a leading figure in Oregon journalism for half a century.

After establishing the Medford Mail Tribune, Putnam purchased the Salem Capital Journal in 1919. Retiring in 1953 he remained editor emeritus of the Capital Journal until his death in 1961 at the age of 89.

The three-story building will provide a focal point for all non-academic, student-oriented activities.

A large bookstore and recreation area will be housed on the ground level along with a publications office. Space for dark-room facilities and a hobbies and crafts room will be provided.

On the main floor a lounge and snack bar combination will replace the cramped Cat Cavern. There will also be two conference rooms, a kitchen and offices for the Center director and his staff.

The personnel deans, chaplain, financial aid director, and student body officers will move into the top story which also includes an alumni lounge, student senate chambers, a television room, five

Joining new Willamette University President Dr. Roger J. Fritz this fall will be four new administrators and a dozen new faculty members.

New faces in the administration offices are Karen L. Anderson, Dean of Women; James R. Ryan, Financial Aid Director; Albert Berglund, Assistant Director of Admissions and Teresa Krug, part-time admissions counselor.

FACULTY ADDITIONS

New full time faculty members and their academic credits are: Lt. Col. Donal D. Bloodgood, professor of aerospace studies and commander of Air Force Reserve Officer Training Corps; B. S. Oregon State University.

Wright Cowger, associate professor of education; B. M. Ed., Oberlin; M. Ed. Willamette; and Ed. D. University of Oregon.

Robert Erickson, instructor of history; B. A., Pacific Lutheran University; M. A. State University of New York at Stony Brook.

Philip E. Harder, Chaplain;

B. A. and M. A., Colorado State University and Rel. D. Claremont School of Theology.

Donald R. Hinton, instructor in history; B. A. Louisiana Polytechnic; M. A. (and Ph. D. candidate), Emory University.

Edwin Hood, Assistant Professor of law; B. A. University of Iowa; J. D. University of Iowa law school; and LL. M. New York University.

Bruce McIntosh, instructor of music; B. M. Oberlin Conservatory of Music; M. M. University of Texas.

Donald G. Montaque, assistant professor of physics; B. S. Oregon State University; M. S. University of Washington; and Ph. D. U. S. C.

Ross R. Runkel, assistant professor of law; B. S. University of Washington, J. D. University

of Washington Law School.

Harry E. Rorman, instructor of earth science; B.A. and M.A.T., Oregon College of Education.

Donald G. Smith, Professor of English and Chairman of the Department; B. A. McGill University; Ph. D. Duke University.

Arno W. Zimmerman, visiting professor of German; M. A. University of Leipzig and M. A. Ministry of Education and Culture.

PART-TIME FACULTY

Joining the faculty as part-time members are:

Donald Coe, philosophy; Clementia Diaz, Spanish; Donald Duncan, psychology; Alan J. Ellis, Russian; Wayne Hawley, religion; Jerry L. Schrader, psychology; Donald Walton and Loraine Merisly, education.

Letters To The Editor

To The Editor:

Relevant is the word that is much used by students when they talk of learning. In an attempt to make learning on this campus relevant the Open Seminar was initiated last semester. This is a series of discussions on topics that the students wanted to hear about. After a successful start it was decided to con-

tinue the series again this year. Your help is needed in insure its continued success. Express yourself as to what you would like discussed or volunteer to serve on the Open Seminar Committee. Your help will be greatly appreciated.

Bill Wilson
Room 117
Belknap Hall

European tour slated

Highlighting an ambitious program by the Willamette University College of Music this year will be a European concert tour by 60 singers and instrumentalists, formally referred to as the "Choir and Musical Kaleidoscope Tour."

Accompanied by choir director Walter Farrier and band conductor Maurice Brennen, the group's six weeks of travel will take them through England, France, Italy, Austria, Germany, Czechoslovakia and Switzerland.

They will perform in universities, churches and public auditoriums in a schedule arranged by Dr. Otto Mandl, a Willamette German professor who is on sabbatical in Germany.

Four groups will make up the tour: a 50-voice choir, the 13-voice Willamette Singers, the Brass Quintet and a 15-piece Kaleidoscope Stage Band.

Selections representing various styles and periods will compose the repertoire and the choir will perform in French, Spanish, German, Italian and Latin as well as English.

Opera Classic

February 20-21 the Opera Theatre will present Mozart's classic "Marriage of Figaro" under the direction of Julio Viamonte. Accompanied by the full orchestra, this is the most ambitious project ever presented by the theatre since its inception two years ago.

Meeting features faculty "minds"

Wednesday night an audience of approximately 250 listened to a faculty "meeting of the minds." In an hour and a half discourse six professors -- James Hand (Religion Department), Maurice Stewart (physics dept.), Noel Kaestner (psychology dept.), James Bjorquist (sociology dept.), George McCowen (history dept.), and Theodore Shay (political science dept.) -- discussed the question, "Has Man Progressed?" A question and answer period moderated by A.S.B. President Bill Bennett followed the discussion.

On Good Friday, March 27, the Willamette choir and Salem Community Symphony will unite to perform an uncut version of the St. Mathew Passion by Bach.

Inter-Session

Preceding the performance Director Charles Heiden will be joined by other faculty members and visiting scholars in presenting a three-day inter-session March 20-21 to explore the educational significance of the work.

WU average 2.56, Lee tops houses

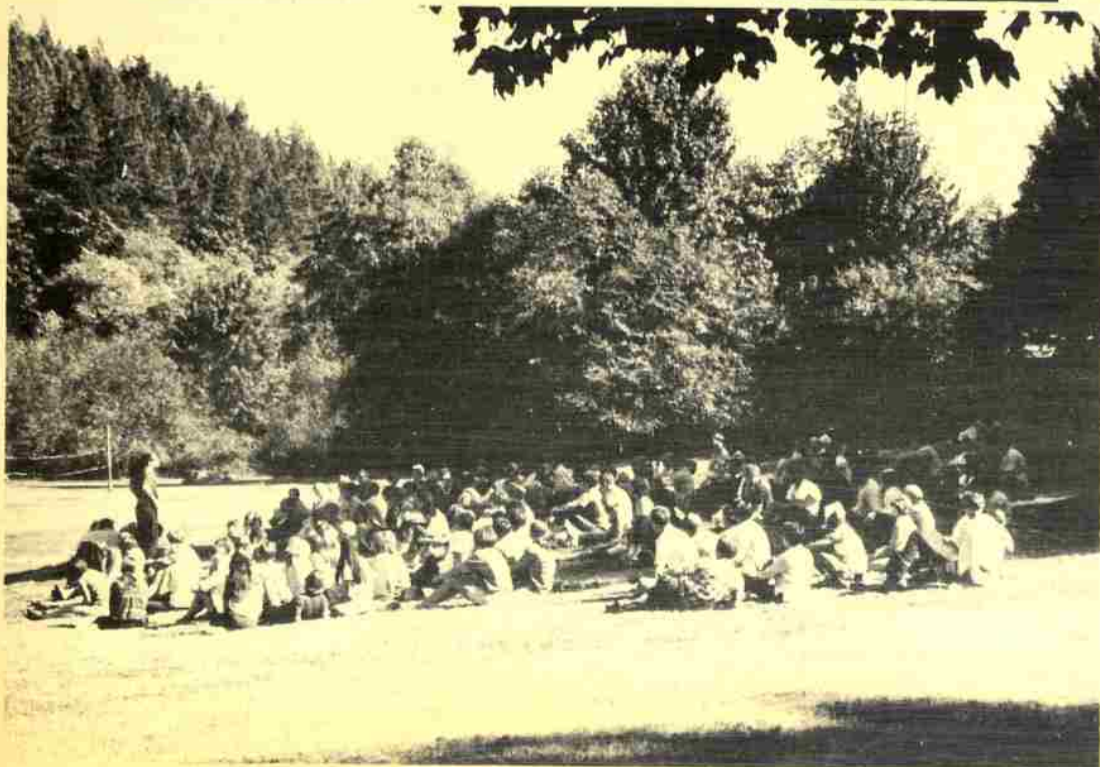
The independent coeds of Lucy Anna Lee House once again lead other campus living organizations in scholastic achievement. For the fourth consecutive semester, the Lee house girls rated tops in grade point average with a spring semester GPA of 3.081. Delta Gamma led the sorority average with 2.799 and Beta Theta Pi topped the fraternities with 2.794.

Following is a summary of spring semester GPA's, with the number of students in parenthesis:

Lucy Anna Lee House (23)	3.081
Town Women (58)	2.935
Emily J. York House (34)	2.807
Delta Gamma (54)	2.799
Beta Theta Pi (60)	2.794
Pi Beta Phi (58)	2.768
Kappa Sigma (60)	2.752
Chi Omega (44)	2.725
ALL SORORITY (259)	2.693
ALL WOMEN (476)	2.671
Alpha Chi Omega (53)	2.659
Belknap (66)	2.641
Delta Tau Delta (54)	2.573
ALL FRATERNITY (312)	2.482
ALL SCHOOL (1126)	2.560
Alpha Phi (50)	2.500
Sigma Alpha Epsilon (52)	2.482
ALL MEN 9650	2.487
Town Men (157)	2.481
Phi Delta Theta (44)	2.394
Lausanne Hall (45)	2.321
Matthews Hall (51)	2.317
Doney Hall (57)	2.314
Sigma Chi (42)	2.288
Baxter Hall (64)	2.130

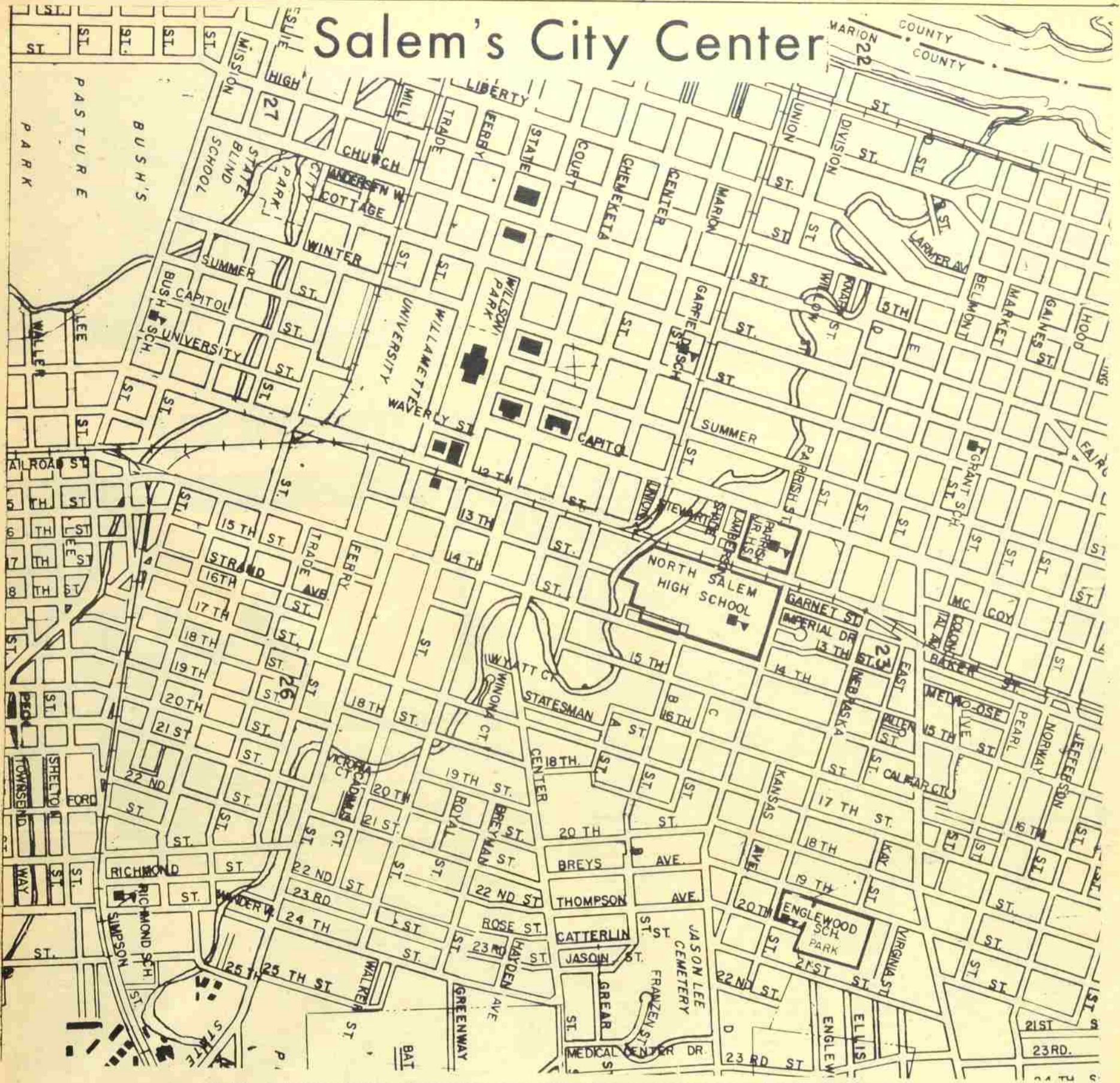


Camp — a glimpse, a memory



To a freshman ...





THIS PAGE SPONSORED BY THE FOLLOWING MERCHANTS:

WAYNE'S BARBER SHOP
146 13th SE

PETE & BONNER'S A & W
110 12th NE

AVIS RENT-A-CAR
325 Liberty St. SE

BISHOP'S CLOTHING STORE
495 Center NE

BURRIGHT'S CLEANERS
198 Church St. SE

CAPITOL OFFICE EQUIPMENT
148 High St. SE

THE CAPITOL THEATRE
542 State St.

FIRESTONE STORES
395 Liberty NE

The FIRST NATIONAL BANK of OREGON
280 Liberty NE

THE GAY BLADE
198 Liberty St. NE

THE ELSINORE THEATER
170 High SE

HEATH THE FLORIST
456 Church St. NE

HERFY'S
1275 Mission SE

THE HOLIDAY INN
745 Commercial SE

THE HOLLYWOOD THEATER
1005 Capitol NE

THE TOP HAT RESTAURANT
1275 State

THE TREASURE PIPE SHOP
130 Liberty SE

SALEM RECORD AND TV
170 Liberty NE

SAMBO'S
480 Liberty SE

SHRYOCK'S STORE FOR MEN
Capitol Shopping Center

ZALES JEWELRY
415 Center NE

THE US NATIONAL BANK
1317 State St.

JIM'S SHOE SERVICE
183 High NE

JIM'S UNIVERSITY BARBER SHOP
1256 State St.

KLASSIC CAMERAS
1146 Center NE

McEWAN PHOTO SHOPS
245 High St. NE

NOPP'S GOLDEN PHEASANT
248 Liberty NE

THE NORTH SALEM DRIVE-IN
6242 Portland Rd. NE

QUISENBERRY'S PHARMACIES
150 Liberty SE 2440 Gear NE

RANDALL'S CHUCK WAGON
3170 Commercial SE

ROEN'S TYPEWRITER
456 Court St. NE