

Willamette Collegian



Vol. XL.—No. 25

WILLAMETTE COLLEGIAN, APRIL 25, 1929

PRICE FIVE CENTS

ASWU VOTE WILL BE TAKEN FRIDAY

TWO SEEK PRESIDENCY

Mergler Only Candidate for Editor; Other Offices Have Two Nominees

The polls for student body elections will be open all day Friday in Eaton Hall. The possibility of a second election being necessary is very slight, as there are not more than two nominees for any position. The office of president of the associated students is being sought by two candidates, William Mumford and Paul Geddes. Mumford is a four-year letterman in football, a member of the Ball and Chain, and of Science Club; he is president of his class this year as well as a member of the Junior play cast. Geddes is manager of the Junior play, and has been editor of the Wallulah, manager of May Day, president of his class. He is a member of the Blue Key, Delta Theta Phi, legal honorary, and Beta Chi Alpha.

Stephen Mergler has as yet encountered no opposition for the position of Collegian editor, so it looks as if it will be up to him to put us in print next year. "Steve" entered from Central Junior College in Washington, and since coming to Willamette he has had much experience in Collegian work. Besides this, he was a member of the Cubs and of the Y. M. cabinet, and he is class editor of this year's Wallulah.

McGilvra and Harland for Wallulah

The two sophomores who desire the editorship of the 1930 Wallulah are Robert McGilvra and Roy Harland. McGilvra was president of his class last term and has worked as Sports Editor of the Collegian and Wallulah. He is a Cub and a member of Ball and Chain. Harland has been prominent in debate and oratory, having been a member of the varsity debate squad for two years, and he is a member of the Forensic Council of the Cubs. This year he holds the position on the managerial staff of the Wallulah.

There are two candidates for the office of first vice-president, Margaret Bolt and Frances McGilvra, both of whom are juniors. Margaret Bolt entered Willamette as a sophomore, and she held the position of class secretary during her first year here. Frances McGilvra has just completed a year as Song Queen. She was a member of the executive committee.

(Continued on page 3)

MARY ALLEN CHOSEN AS NEW SONG QUEEN

Friday, April 29, the A. S. W. U. held its annual election for the offices of Yell King, Crown Prince and Song Queen.

Mary Allen, a sophomore, who has had charge of directing the Freshman Glee song for the two years that the class of '31 has been on the campus, is to direct the student body singing as Song Queen. Miss Allen has also been a member of the Glee Club for the past two years.

Don Sanders, a sophomore transfer from Walla Walla College, was elected Yell King. Dick Sherwin is to be Crown Prince.

The new pep staff seems to be very well qualified to make the organized singing and rooting of Willamette U. a big success.

ELECTION PLATFORMS

Candidates Give For Seeking Offices

President

If I am elected to the office of President of the Associated Students of Willamette University, I pledge myself to discharge faithfully the duties of that office as set forth in the constitution of that organization, to abstain from political prejudice at all times, to encourage conscientiously the rich traditions of the university, and to foster unceasingly a high standard of school spirit among us, not only in the athletic activities but also in the high ideals and the scholarship for which our school is noted.

Wm. W. Mumford.

Student spirit and cooperation at Willamette has undergone a remarkable change within the last few years. We have come to a place of recognition and respect in the world of athletics and of forensics. From my observations during my four years at W. U., I would say that one of our greatest needs in building to even greater achievement is that we forget some of our apologies and assume a greater attitude of loyalty and pride in our old school. To building up this spirit and executing the duties of president of the associated students, I will, if elected, pledge my highest capabilities.

Paul Geddes.

Collegian Editor

If the student body chooses to elect me to the editorship of the Collegian, I shall endeavor to make our official publication voice the sentiment of our body and seek by editorial policy to secure improvements wherever they are needed. Recognizing that the Collegian is a criterion of the student spirit, I shall, if elected, seek to maintain high journalistic standards in its composition.

Stephen C. Mergler.

Wallulah Editor

If elected to this position, I shall try to edit a book which everyone will cherish as the finest possible record of Willamette's activities.

Robert McGilvra.

The Editor of the 1930 Wallulah should present the activities of the student body in the most complete and attractive manner, keeping within the financial budget. This I shall strive to do if elected to the office.

Roy Harland.

First Vice-President

If elected, I shall accept the responsibilities of the office and will fulfill its duties to the best of my ability, cooperating with the students for better social conditions at Willamette.

Margaret Bolt.

A duty of the vice-president is to see that each individual has a good time and enough to eat at all social functions. If elected to this office, I shall faithfully control my Scotch instinct and endeavor to give good measure in both respects.

Frances McGilvra.

Second Vice-President

If elected to the office of second vice-president, I shall attempt to care for the distribution of student body tickets and requisitions at the earliest possible moment, to care for the funds of the A. S. W. U. in a business-like manner, and to represent the student body at all executive committee meetings to the best of my ability.

Harold Shellhart.

I will endeavor to build the

(Continued on page 3)

JAPANESE SPEAKER TELLS OF ORIENT

Kawasaki on Good Will Tour of America—Will Address Students at Corvallis

Mr. T. Kawasaki, attache of the Japanese consulate at San Francisco, was on the university campus Monday. He addressed the student body at the chapel period and spoke to a group of students, faculty, and townspeople in the evening in Waller Hall. Mr. Kawasaki, "the good will messenger of Japan," has been traveling on the Pacific coast as far up as British Columbia, addressing groups of people for the past two months. He has been in the United States, particularly the East, since 1919. He is a graduate of an eastern college.

In his talks he presented an idea of the attitude of the Japanese people toward international problems of commerce, cultural development, and governmental affairs. The Japanese people, he says, are eager to accept the new inventions and institutions which modern America and Europe are introducing, but since they are in a transitory stage, passing from the feudal to a democratic period, their religious life particularly and their social life is in a chaotic condition. However, the Japanese people in westernizing their environment are inculcating the finest ideals of the old era with the progressive, beneficial ideas of the new; thus, says Mr. Kawasaki, will be built up an empire broad-minded, intelligent, and religiously settled. The religious chaos is the result of the introduction of Buddhism, Christianity, and Shintoism. Mr. Kawasaki is a true representative of the new era in Japan. He is a man of high ideals, well-versed in the finest products of American literature and history, and a sound believer in the Christian religion. He is especially well-informed in Japanese governmental conditions and, because of his broad understanding of the relationships of America and Japan in cultural as well as governmental aspects and his genial personality, he was intensely interesting to his audience.

Monday evening a group of faculty including Dr. Kohler, Prof. and Mrs. Richards, Dr. and Mrs. Franklin were hosts at a dinner party at the Spa for Mr. and Mrs. T. Kawasaki, and they found the guests to be charming conversationalists. During the dinner Dr. Franklin discovered that Mr. Kawasaki was among the group of government officials who met the members of the Upton Close party at Tokio in Japan.

Mr. Kawasaki, continuing on his tour, has gone to Corvallis where he will address groups at Oregon State College.

HATHAWAY WILL SING FAREWELL WILLAMETTE

Willis Hathaway has been selected by vote of the Senior class to sing "Farewell Willamette." He will sing this song at the annual senior chapel and at the commencement exercises. Mr. Hathaway is a member of the Men's Glee club; he has sung with the varsity quartet for several years and is a member of the Bee-thoven society.

Chas. Kaufman and Ruth M. Hall have been chosen to write the class prophecy, and Lela Bell Sanders was elected as class testator.

PLANS ARE UNDER WAY FOR SANTIAM RETREAT

Ray Culver to Attend; Cabinet to Discuss Plans for Seabeck and Next Year

The third annual retreat of the Y. M. C. A. will be Saturday and Sunday, April 27 and 28, on the Santiam river.

Mr. C. A. Kells, Ray Culver from Portland who is affiliated with the Northwest Council, and Professor Frank Leamer will attend the meeting.

The retreat promises to present a busy week-end for the cabinet members of the Y. This meeting is particularly for the cabinet members as plans for next year will be put forward, discussed, and organized. However, if any men who are interested in the retreat and the Y of next year will see one of the cabinet members arrangements can be made for the trip.

The cabinet will take up the Seabeck conference discussion. All of the cabinet is urged to attend the summer's meeting.

Another feature for discussion on retreat will be making use of Chresto cottage. Chresto is available for the use of college students and could be arranged beneficially for them if backed by a strong associated group. It is one of the biggest problems on the campus, according to Leslie Manker.

Retreat was started three years ago by Jim Rettle, then president of the Y. M. C. A. Every year has proved to be successful.

The Y has the use of the Y. W.'s cabin for this occasion.

LAFKEY TO DELIVER ORATION AT O. N. S.

Ray Lafkey has been selected to represent Willamette University at Monmouth in the Constitutional Oratorical contest on April 27. The subject of Mr. Lafkey's speech is "Lincoln and the Constitution."

There will probably be speakers from nine or ten Oregon colleges participating in the contest.

During the afternoon of the same day the Oregon Forensic league which is made up of all colleges of Oregon will meet to elect officers for the coming year.

FRESHMAN CLASS WILL WEAR SCHOOL COLORS

The plan which was proposed and accepted at the student body meeting last Friday does away with the traditional green lids and ribbons of Freshmen. In its place the incoming classes will wear lids and ribbons of school colors on Tuesday and Thursday of each week until homecoming.

The purpose of this plan is to abolish the friction between the freshmen and sophomores which has in past years been the result of the enforcing of this tradition. It was not definitely decided who would enforce the wearing of the new lids and ribbons, but the W. club has volunteered to find someone to do it and the present freshman class expressed a desire to aid in the enforcement.

SENIORS PASS RESOLUTIONS

It was formally decided upon by the senior class at a meeting Wednesday noon that they would cooperate with the juniors in enforcing the cord tradition and that in the future they would be much stricter in keeping underclassmen off the senior bench in front of Waller hall.

WILLAMETTE MAY DAY DRAWS NEAR

CORONATION ON CAMPUS

Dr. Doney to Crown Queen Georgia; David Smith, Jr. to Carry Crown Again

With May Day only a week away, plans for this annual Willamette festival are nearing completion.

For the first time in four years the coronation and the May dances will be held on the campus. The throne will be placed between the two maple trees standing in the angle of the walks before Waller Hall. This leaves the large clear triangle of lawn lying west of the central walks for the dances with ample room for bleachers around the edges.

During the re-landscaping of the campus the greater part of the festivities were held either in Wilson Park or on the grounds of the Supreme Court House.

As is the custom, President Doney will crown Queen Georgia. Last year because of Dr. Doney's necessitated absence, the queen was crowned by Governor Patterson. David Smith, Jr., will again be crown-bearer.

Wistaria to Be Used Instead of Roses

Elsie Tucker, chairman of the Queen's court committee, states that instead of the pink roses with which the lattice background of the platform has usually been decorated, wistaria will be used.

This color scheme will be further carried out by the rose-orchid gowns which Beatrice Lochhart and Jean White, the queen's attendants, will wear and the lavender frocks of the little flower girls.

A prelude to the May celebration will be the queen's tea at the Alpha Phi Alpha sorority house this Friday afternoon.

Even a larger number of out of town guests than usual will be entertained by the various campus houses and in the homes of students.

NEW CONSTITUTION STRESSES SERVICE

Committee Has Made New Draft; Organization Has Twenty-five Members

The Cubs will act as a service organization in the future instead of an enforcement society, as they have done. This policy will be incorporated in the new constitution, which is being drawn up because the old one has been lost.

Ushering and campus work are among the duties of the organization under its new purpose. The Cubs have been considering this plan all year, but it was brought up in meeting and decided only about a month ago. A committee has been appointed, which has made a primary draft of the new constitution.

Fifteen sophomores and ten freshmen make up the membership of this body. The present officers are: President, Fritz DeHarpert; Vice-President, Dale Waddell; Secretary, Ed Wells; and Treasurer, Ralph Schomp.

What is a P-e-r-s-p-e-r-a-t-o-r?
See Back Page

Official Publication A. S. W. U.

Willamette Collegian

PUBLISHED WEEKLY

Member of the Pacific Intercollegiate Press Association.

WILLIAM B. SMULLIN FRANK L. LOMBARD
Editor Manager

Associate Editor: BERNICE JACKSON
Sports Editor: MEREDITH WOODWORTH
Kimbali Editor: EVERETT GARDNER
P. L. D. Editor: ARTHUR HOLLENDERG
Copy Editors: HELEN CURRY
GLADYS MILLER
Music Editor: KATHERINE EVERETT

Reporters—Childs, Oleaso, Carrin, Siles, Brunson, Fleet, Mergler, Brothaupt, Gilhousen, Felton, Hills, Smith, Moody, Oliver, Hanks, Geymans, Barker, Smolin, White, Kafury, Hollister, Pemberton, Moody, Barker, Hanks, Bove, Geymans.

Printer—Margaret Warnke.

BUSINESS STAFF

Advertising Manager: HAROLD TOMLINSON
Auditor: MUREL SHELDT
Circulation Manager: HESTINE HOLLISTER
Collections: ALFRED KING

Advertising Assistants—Bowe, A. Bowe, King, Fitzpatrick.

Entered at the Postoffice at Salem, Oregon for transmission through the mails as second-class matter.

Subscription rate \$1.50 per year.
Editorial and Business offices, Basement Waller Hall, Phone 2341.

The Passing of the Green Lid

With the action taken by the student body last Friday, Willamette bids adieu to one of her most time-honored and least noble traditions, and takes a step forward in her development toward more ideal social relations.

Recognizing the identification values of the green-lid and the harmlessness of the custom in itself, we feel that in our experiences on the campus the least praiseworthy incidents have resulted from attempts to enforce this tradition.

Whereas, it should be the policy of the student body to foster a spirit of cooperation and strive to make the new students feel that they are a part of the campus activities, it has let some of its members resort to the most primitive methods in an attempt to control the pursuits of the Freshman class. The enforcement of the green-lid tradition has tended to produce enmity rather than cultivate a friendly feeling of association.

Where, if not in a student group shall we learn to control ourselves, order our activities by reason and not force, and learn to live in peace and harmony with our fellowmen? And so with no grief or lament we consign this tradition to the errors of the past.

A Power Behind Prosperity

Developing from the small printed ad to the full page, highly colored ad of today, advertising has made one of the greatest advances of any form of business. Not only

have the qualities included in good advertising been strengthened, but a newer form of advertising has developed the verbal advertising which comes over the radio. However, radio advertising cannot yet take the place of our oldest and safest form, that of newspaper advertising. Without newspaper and magazine advertising, radio advertising would be useless.

Newspapers carry the bulk of advertising in the country today. Last year \$800,000,000 was invested in newspaper advertising alone. It is evident that the newspaper is the greatest medium of salesmanship. It is almost sure proof that the people appreciate advertising in the newspaper. Those who pay for them appreciate the results and those who read them appreciate the saving.

The paper with the largest circulation gets the most advertising. Merchants who wish to make their products known, will select the most popular paper. If people objected to advertising, instead of appreciating it, the circulation would undoubtedly decrease. However, with the increase of advertising, year by year, it conclusively indicates that the public is interested. The whole thing revolves in a circle.

It is through this medium that we live in better homes, eat more wholesome food and wear better clothes. Thriftiness is developed by advertising. Thus advertising seems to be appreciated by the average person.



Perplexed mother who receives "form telegram No. 3" birthday greeting from her only son.

Along the Way

(By The Wayfarers)

If these rambunctious rooks and sophs don't have enough money to buy whipcords, they can wear their other cords and the Juniors will take care that they wear whipped-cords.

Someone built a fire in the Kappa furnace Saturday and everyone thought the house was on fire.

We suggest to Dean Clark that he plant briars all over the campus to tear the clothes of those persons who persist in walking on the grass.

We understand that Frank Lombard is a great lover—of sleep.

The world at its worst: One of our seniors took two senior ovals.

Detail of debonair of Salem is debunk again. The spring paper mill smudging has begun.

This co-ed carnivaling surely has had a terrible effect on the participants. Would you believe it! They've now organized a club of the unmissed.

Must have been reading some of Tennyson's idylls about virgins.

\$90 NET PROCEEDS AT HOME CONCERT

The home concert of the Women's Glee club held in chapel was a success in every respect. The concert was well supported by both Willamette students and townspeople. The net proceeds amounted to a little over ninety dollars.

Heartly applause greeted both solo and chorus numbers. Miss Helen Pemberton dressed in costume gave two humorous readings. Professor E. R. Hobson directed the chorus with his usual fine technique.

A large bouquet was presented to the club by the Men's Glee club. The concert series is almost complete. Sunday evening a concert will be given at Woodburn and in two weeks the club will sing near Oswego. These two concerts will more than satisfy the financial obligations of the club.

Casualties Take Place On Junior Flunk Day Here

More than the usual number of casualties attended interclass hostilities among Willamette university students early Wednesday morning, when the junior class was mobilizing for its "flunk day" trip and seniors sought to prevent its departure.

The battle raged in the wake of two motor buses which were picking up the juniors at the residences, when the seniors attacked and succeeded in carrying away several junior men for involuntary trips into the country. The main body of juniors got away and spent the day at the coast.

WOOLSEY DIES

NEW HAVEN, Conn., April 25.—(AP)—Theodore Salisbury Woolsey, L. L. D., professor emeritus of international law at Yale university since 1879, died at his home here tonight.

What is a P-e-r-s-p-e-r-a-t-o-r? See Back Page

ERICKSON RETURNS FROM CONFERENCE

Dean and Mrs. Erickson have returned from a motor trip to Seattle where Dean Erickson attended a conference of the National Association of University Registrars, Thursday and Friday the conference met at the Olympic Hotel, and on Friday a special conference on the reorganization of the plan of the first two years of college was held at the University of Washington. Detailed reports were given from the Universities of Washington, Michigan, Idaho, and Texas, followed by a general discussion.

The reorganization plan has to do with the separating of the first two years of college from the last two so that the curriculum of the first division may be arranged more in accordance with that of the high schools.

This plan involves the dividing of the present colleges into two separate institutions. The plan is similar to that used in California. Several colleges of the northwest are using this system at present and many more are planning to introduce it in the near future.

Professional Directory

Listed below are the Salem Professional Men who are worthy of Willamette patronage.

Phone 440 Res. 753-R

Dr. O. A. Olson

General Dentistry
Prophylaxis and Pyorrhea
Evenings by Appointment
214 Masonic Temple, Salem, Ore.

Dr. Henry E. Morris

Eyesight Specialist; Optometrist
301-2-3 First Nat'l. Bk. Bldg.

Phone 625

Dr. L. R. Burdette

401-402 First Nat. Bk. Bldg.

Phone 169

Dr. B. Blatchford

DENTIST
701 First Nat'l. Bank Bldg.

Dr. Gorge E. Lewis

DENTIST
402-503 First Nat'l. Bank
Office Phone 852
Res. Phone 803-W

Chalmer Lee George, D. D. S.

Suite 1002-1003. Phone 181
First Nat'l. Bank Bldg.
Salem, Ore.

DR. W. L. MERCER

Graduate
American School of Osteopathy
Kirksville, Mo.
Salem, Ore.

DR. M. B. McKenney

Jeweler & Optician
Successor to C. A. Luthy
325 State St.

Phone 319

DR. DAVID B. HILL

DENTIST
Practice limited to straightening irregular teeth, X-ray of the teeth and consultation.
Rooms 306-307 First Nat'l. Bank Bldg., Salem, Ore.

Senior Oral Furnishes Variety Of Tortures; Professors Thrive On New Quantities of Knowledge

There is nothing new under the sun yet—

The senior walks to his senior oral. Upon his face is a look of set determination, forced courage, and sweet resignation. As the senior reaches the den and sees the professors waiting to pounce upon him to lash him with fierce enquiries and at last to slay him by wielding their pens, his knees weaken. He sinks into a chair and passes into the first of the last stages—coma. Before him passes the age-old illustration of Daniel. But the senior was not, like Daniel, a dentist, so he couldn't pull the lions' teeth.

This first stage of dread expectancy passes into the second stage—that of shrapnel and explosion—much offensive and little, little defensive play. The throat is dry, the tongue is wood. The senior, however, manages to emit a quack and a cluck at the wrong intervals. A question is asked. Dire silence! It is like the silence before the cyclone, the quietude before a hanging. Ah! at last the tension is broken. The expected answer has been given. "I don't know!" asserts the sen-

ior, in a firm voice. The day is saved!

The third stage is what really relates to my introductory statement (for regardless of opinion there is real organization here). Constructive thinking is displayed. The professors become fat with the new knowledge. The naive answers of the senior thrill them to the ingenuity of the senior.

"What would be the philosophy of a man that lived in a tub?" was shot at the still quivering imposed-upon mortal.

"I don't know! I never lived in a tub," was the prompt rejoinder.

Then everyone asked, "How did you come out?"

Brutal question! It calls for the true answer, "On my ear!"

WALLULAH AND MAY DAY

Although no other information is forthcoming, the editor of the Wallulah says that it will be ready for distribution to Willamette students on May Day this year. The "Age of Chaucer" will be the motif. Under the editorship of George Poor, the staff is hard at work.

LAW ARTICLE IS WELL RECEIVED BY READERS

In the April issue of the "Balance Sheet", a publication of wide circulation for commercial schools, appears an article written by Prof. Roy M. Lockenour. The article entitled "The Use of Tables in Teaching Law" is one of several articles written by Prof. Lockenour. A picture of the author accompanies the piece.

Prof. Lockenour has received a number of letters from commercial professors from various parts of the United States congratulating him on the excellent way in which he presented the matter.

INVITATION IS GIVEN, INTERNATIONAL NIGHT

Cosmopolitan Club of the University of Oregon has extended an invitation to Willamette students who are interested in international affairs to attend International night to be held on the university campus at Eugene, Saturday night, April 27.

This program will be the culmination of International week when they will stress international problems and culture.

Students interested may procure further information from Professor Laughlin.

LOCALS

Marion Barber of Camas, Washington, was a guest of her sister, Dorothy Barber for Co-ed Carnival.

Phyllis Kugel of Portland visited Jo Olsson at Lausanne Hall last Sunday.

Elizabeth Kelly, Florence Volstorff, Elsie Allen, Helen Hughes, Mildred Wilkens, Jean Spencer, Elma Kimbrell, Theresa Nanney, and Margaret Eddy were among those from Lausanne Hall who went home for the week-end.

Alice Snyder and Isabelle Rand of Portland were the dinner guests of Gloria Grafton Friday evening.

Margaret Townsend was the dinner guest of Gloria Grafton Sunday.

Winifred Duncan and Polly Kirwin of Portland were the week-end guests of Frederica Brown at Lausanne Hall.

Margaret Gates spent Saturday and Sunday at Lausanne Hall visiting her sister, Camilla Gates.

Saturday, April 20, Bernice Jackson was called to her home at Hood River by the death of her grandfather.

Lois Dunkelberger, who was a Freshman at Willamette last semester, was a visitor here last Sunday.

While in McMinnville Saturday evening, Miss Jean Spencer gave two readings at a banquet of Alpha Sigma Phi sorority of Linfield College.

Margaret Bolt spent the week-end in Portland.

Miss Helen Hughes spent the week-end at her home in Harrisburg.

Miss Ruth Hewitt, '26, has been spending the past week with friends in Salem.

Miss Norabel Pratt spent Sunday with friends in Dallas.

Eldred Cobb, ex '31, entered Stanford University at the beginning of the spring quarter. He is with his brother Lucien, who is studying in the school of business administration.

SOPHOMORES WILL FIX FOUNTAIN AT WALLER

A meeting of the sophomore class was held Wednesday noon, during which plans for a picnic were discussed. It was voted that the class should fix the fountain in front of the Chapel if funds permitted. The class also voted to give thirty dollars for the student lunch.

Turnouts for interclass track were requested, and the Co-ed Carnival trophy was presented to the sophomore class as an award for the best class stunt given. It was presented by Paul Ackerman and received in behalf of the class by Helen Pemberton and Harriette Hageman.

WOMEN TO MEET S.P.S. IN TENNIS TOURNAMENT

The women's varsity tennis team will leave tomorrow morning by car for Tacoma, where they will meet the C. P. S. women. Pauline Findley, Edith Findley, Margaret Morehouse, and Doris Steele will represent Willamette in the four sets of singles and two sets of doubles to be played.

The Whitman match on May 11, which will include games for both men and women, is the only other meet now scheduled, but efforts are being made to arrange a match for May week-end.

Patronize our advertisers.

WOMAN TELLS OF WORLD PROBLEMS

Hard for American Youth to Understand European Conditions; Relief Needed

Around a cheerful fire in Chreato cottage Sunday evening a group of students listened to Frances Warneke tell of her experiences in India during the last eight months.

Miss Warneke, a junior in University of Southern California in Berkeley, was one of the six people chosen from the United States to attend the meeting of the general committee of the World Student Christian Federation in Mysore, India. This federation is composed of the student Christian movements all over the world including our own Y. M. and Y. W.

The purpose of meeting was not only to plan the work of the federation for the next two years, but to bring thinking students from thirty different countries together that they might discuss world problems and try to understand one another.

Hatred Still Exists From War

The tremendous difficulties encountered when different student groups are frankly and sincerely trying to understand each other," says Miss Warneke, "can scarcely be realized by the American student. In our isolated comfortable position we have no notion of the need for international understanding or the hatred and bitterness that still exists between the countries that experienced the war. We are far behind other students in our knowledge and thought about world affairs. We owe it to ourselves to learn and inform the misinformed."

Student Relief in Europe

The federation is doing a very important work in holding international and inter-racial conferences. Student relief is still being carried on in some parts of Europe. The financial needs of the federation in carrying on its various activities among students are enormous.

When the general committee met in Mysore, it was in debt about \$70,000. Dr. John R. Mott, who has been chairman of the federation, offered to pay \$50,000 of this amount and an additional \$10,000, if the students themselves would raise the remainder.

Seaback division pledged \$500 and the Willamette Y. W. has promised \$40 of this sum. The local organization has not been able to fill its pledge yet and anyone on the campus desiring to help is urged to do so.

The next meeting of the general committee of the W. S. C. F. is to be held in the United States in 1931.

Miss Elizabeth Kelly went home Thursday afternoon with her parents, who were returning from a visit in California. She returned Sunday evening.

Troy Laundry & Dry Cleaners
2330 S. Commercial
Phone 1756

H. T. LOVE
THE JEWELER
335 State St. Salem, Ore.

Booths Fountain Service
WHITE HOUSE RESTAURANT
Soft Drinks Meals

Your Nearest Drug Store
Phone 233
CARSON PHARMACY
Harry V. Carson, Prop.
Hotel Senator Salem, Ore.

ASWU Vote

(Continued from Page 1.)

tee and has been prominent in the musical life of the campus.

Everett and Scott for Secretary

The aspirants for the office of secretary are Katherine Everett and Lillian Scott, both of whom are prominent in the Women's Glee Club. Miss Everett has held positions on the Y. W. cabinet and in her class, and she has worked on both the Collegian and the Wallulah. Miss Scott is now vice-president of her class, and is a member of the Women's Glee Club.

Petitions have been filed for Dwight Adams and Harold Shellhart as nominees for the second vice-presidency. Adams has been prominent in basketball and baseball during his two years here, and he has served on the executive committee both years. Shellhart, besides being president of, and an active worker in the Y. M. C. A., has held offices in his class and is a member of the Blue Key. He was also a Cub.

The officers elected tomorrow will be installed at the last regular meeting of the student body this year and will assume their duties next fall.

Election Platforms

(Continued from page 1)

spirit which now permeates students, faculty, and student officers. It is the spirit of growth, of progress, of cooperation toward bigger things among student activities.

Dwight Adams.

Secretary

If I have the honor of being the secretary of the A. S. W. U. I will perform the duties of the office faithfully and to the best of my ability. I might add that my voice has been known to carry at least a mile.

Lillian Scott.

If I am elected to the office of secretary, I promise to practice penmanship diligently so that I can competently read my own notes.

Katherine Everett.

What is a P-e-r-s-p-e-r-a-t-o-r?
See Back Page

Hartman Brothers
JEWELERS
Cor. Liberty & State

PERRY'S DRUG STORE
Rexall Store
Everything in Drugs

Mother's Day Coming Soon

She prefers
Spa Candies

Walkover Footwear **John J. Rottle** Canilever Shoes
215 State Street



The season is open for those
Delicious Gray Belle
MILK SHAKES and MALTS—
They're Different—



SALEM WOODBURN

SERVICE —:— QUALITY —:— ECONOMY
Wholesale Prices to Fraternities and Sororities

Willamette University

Founded February 1, 1842

SALEM, OREGON

A Christian institution of higher learning. Located at the Capital of the State of Oregon. A beautiful campus opposite the Capitol building. Buildings and equipment attractive and adequate. Faculty of highest character, preparation and teaching. Student body clean, able and wholesome. Scholarship high and credited everywhere. Very inexpensive. Rich in tradition; large and honored list of alumni. Students wishing for work in the Course of Liberal Arts, in Law, in Theology, in Music, or in Fine Arts are highly advantaged at Willamette. Close investigation invited.

BULLETINS ON REQUEST



For Satisfactory Service

Patronize the Following Barber Shops:

Model Beauty Shop 112 N. Commercial St.	Senator Barber Shop Senator Hotel
Bill's Barber Shop 315 State St.	Bank Barber Shop First Nat'l. Bank Bldg. Downstairs
O. K. Barber Shop 337 State St.	The Best Barber Shop 135 S. Liberty St.
Tumbleson's Barber Shop 371 State St.	State Street Barber Shop 1266 State St.
Maltese Barber Shop 482 Court St.	Patronize Union Barber Shops

Society

by
Mary Louise Aiken

COMING EVENTS

Friday, April 26—Delta Theta Phi Banquet.
Alpha Phi Formal Tea.
Saturday, April 27—Junior-Senior Banquet.
Baseball game with Linfield.
Girls' tennis game with C. P. S.
Friday, May 3—May Festival.
Junior Play.
Saturday, May 4—Daleth Teth Gimel Tea.
Baseball game with Pacific.
Mens' Glee Club Concert.

Kappa Gamma Rho Banquet Brilliant Affair

The Kaupa Gamma Rho fraternity entertained at their tenth annual banquet last Saturday evening. The impressive affair was held in the Gold room of the Elks Temple, and was one of the loveliest events of the season. Crimson and gold tulips were arranged on the U shaped table, and the room was lighted with gold candles. Programs bearing the fraternity coat-of-arms were at each place.

Lloyd Harder, the house president, acted as toastmaster. Clarence Poor, Robert McGilvra, Harold Tomlinson, Charles Kaufman, and Professor Leland Chapin responded to toasts. A violin solo was given by Alfred King, and Walter Kaufman sang a solo.

Alumnae who were present for the affair included Professor Leland Chapin, of Salem; Hugh McGilvra of Forest Grove; John Russell and Donald Davis of Portland; Lewis Nichols of Dayton; and Cornelius Bateson of Canby.

Guests of the fraternity included Mrs. Carl Gregg Doney, Professor and Mrs. Charles L. Sherman, Miss Helen Knott, Miss Beatrice Lockhart, Mrs. John Russell, Mrs. Donald Davis, Miss Louise Lanke, Mrs. Cornelius Bateson, and the Misses Bonnie Weinhelmer, Margaret Morehouse, Mary Louise Aiken, Katherine Everett, Dorothy Ferrier, Margaret Pro, Margaret Delanty, Phyllis Day, Esthor King, Lillian Scott, Edith Findley, Helen Stiles, Roby Laughlin, Faye Cornutt, Estel Chaney, Pauline Findley, Harriette Hageman, Josephine Conn, Elizabeth Ogden, Buena Brown, and Isabel George.

Aviation Idea Featured At Alpha Psi Delta Dinner

Alpha Psi Delta entertained on Saturday evening, April 20, with a formal banquet at the Argola. To the surprise of the guests the entertainment of the evening became very enjoyably informal. The aviation idea was carried out effectively in the decorations, the clever programs, and the toasts. Following the dinner the "landing field" was the scene of an adagio dance given by Elizabeth Waters and George Birrell. The hazardous "stunt flights" of the evening were as follows: The Take-Off, Paul Geddes; Gaining Altitude, Bernard Newby; The Barrel Roll, Dean Roy R. Hewitt; The Outside Loop, Edward Wells; The Inside Loop, Wesley Roeder; The Tails-pin, Kenneth Litchfield; and the Crack-Up by the Toast Master, Donald Grant. Willis Hathaway, accompanied by Grace Henderson, sang "The Green-eyed Dragon".

The guests of the fraternity were Dean and Mrs. Roy R. Hewitt, and the Misses Gaynelle Beckett, Elizabeth Waters, Margaret McDonald, Iva Claire Love, Helen Pemberton, Mildred Pugh, Dorothy Pemberton, Elsie Tucker, Evelyne High, Grace Henderson, Grace White, Frances McGilvra, Mary Allen, Beatrice Hartung, Josephine Albert, Doris Steele,

Lenora Dyer, Ellen Jean Moody, Marjorie Miller, Jean White, Mary Herschberger, Beryle Hale, Lucille Shultz, Gladys Miller, Mildred Wampler, Helen Briethaupt, Frances Smullin, Louise Brown, Lois Jean Rasch, Fern Harris, and Ruth Bauer.

Betrothals Made Known At Kappa Banquet

Of great interest on the campus is the announcement of the engagement of Katherine Everett and Walter Kaufman, and of Margaret Morehouse and Charles Kaufman, which was made known at the Kappa Gamma Rho banquet on Saturday evening, and came as a complete surprise to their many friends.

The double announcement was made in a particularly clever manner. Just after Walter Kaufman had entertained the group with a vocal solo, little Beth Morehouse appeared, pulling a miniature green auto, an exact replica of the one owned by Walter Kaufman. She distributed tiny favors to each guest, revealing the secret. At the same time a box of candy was presented.

All of the young people have been very active in student affairs. Miss Everett is president of the Beta Chi sorority, is a member of the Ladies' Glee Club, and has been an active worker in the Y. W. C. A. She is a member of the Beethoven society, and of the Junior Class.

Mr. Walter Kaufman has also been prominent in musical circles on the campus. He is a member of the Mens' Glee Club, the Varsity Quartette, and the Beethoven society, and is also affiliated with the Junior Class.

Miss Morehouse is a member of the Beta Chi sorority, and of the Sophomore Class. She is a member of the varsity tennis team, and of the Women's Athletic Association.

Mr. Charles Kaufman has taken a prominent part in campus dramatics, and is a member of Theta Alpha Phi. He is a member of the Senior Class, and was yelling last year.

The dates for the wedding have not been announced.

University Students Join Salem Hunt Club

A great deal of interest in the newly organized Salem Hunt Club has been shown upon the campus. Two classes of university students have been organized, and the members are enthusiastic over the work. The promise of cross country rides, special drills, paper chases, and moonlight rides, adds an added incentive for proficiency.

At a recent meeting held at the Chamber of Commerce rooms, the club was formally organized, and the following officers were elected: President, Mr. Douglas McKay; Vice President, Mrs. W. Connell Dyer; and Secretary-Treasurer, Mildred Pugh.

University members of the club include the Misses Mildred Pugh, Elizabeth Atkinson, Louise Brown, Mary Louise Aiken, Norabel Pratt, Mary Jo Wagner, Margaret Wieneke, Margaret Morehouse, Margaret Ghormely, Doris Steele, Rosalind Van Winkle, Jean White, Elma White, Emily Brown, Jo Conn, Lois German, Harriette Hageman, Roby Laughlin, Gertrude Oehler, Lois Oliver, Edna Prescott, Helen Stiles, Dorothy Bosshard, and Dorothy Pemberton.

Delta Phi Alumnae Hold Meeting Friday

On Friday evening the Delta Phi alumnae held their regular meeting at the home of Mrs. Jack Hansen in Woodburn. After the

business meeting, at which Mrs. Clarence Phillips of Portland presided, Mrs. Hansen served a delightful supper, assisted by Miss Virginia Mason, Mrs. Mildred Rhoten, and Mrs. Verne D. Bain.

Those present included Mrs. Ray Miller, Mrs. John C. Brougher, Mrs. Robert Notson, and Miss Alice Weller, of Portland; Miss Virginia Mason, Mrs. Verne D. Bain, and Mrs. George Thoten, of Woodburn; Miss Pauline Remington of Corbett; Mrs. Claire F. Aisman of Tangent; and Mrs. Charles and Mrs. Sheldon Sackett of Salem.

New Officers Installed At Beta Chi Recently

At a recent meeting of the Beta Chi sorority, the following officers were installed for the coming year:

President, Katherine Everett, of Portland; Vice President, Florence Powers, of Salem; Manager Frances McGilvra, of Portland; Recording Secretary, Louise Brown, of Portland; Corresponding Secretary, Helen McPherson, of Portland; Treasurer, Emily Brown, of Medford; and Sergeant-at-arms, Norabel Pratt, of Portland.

Mrs. Fisher Entertains At Delightful Dinner

Professor Monk's advanced Physiology class was delightfully entertained at dinner at the home of Mrs. Alice Fisher on Friday, April 19. Guests outside the class were Mrs. Hutchason, Mrs. Cecil R. Monk, Camilla Gates, Josephine Conn, Georgia Fairbanks, Mary Clantfield, Oiven Boye, Kenneth Litchfield, and Vernon Taylor.

Mrs. Doney Holds Informal At Home

Mrs. Carl Gregg Doney was at home for the women of the University on Tuesday afternoon, between the hours of three and five o'clock. Many of the girls availed themselves of the opportunity to meet Mrs. Doney informally. Mrs. Frank M. Erickson and Mrs. Gustav Ebsen assisted the hostess. Tea and dainty waters were served.

Jo Olsson gave a dinner party Sunday at Lausanne Hall for Miss Phyllis Kugel of Portland. The other guests seated at the table were Winifred Duncan, Polly Kirwin, Ivan Otto, Paul Holloway, Edwin Boles, and Evans Hamilton.

(Continued on page five)



485 Center Street

PAY and CARRY for 20% discount and no delivery.

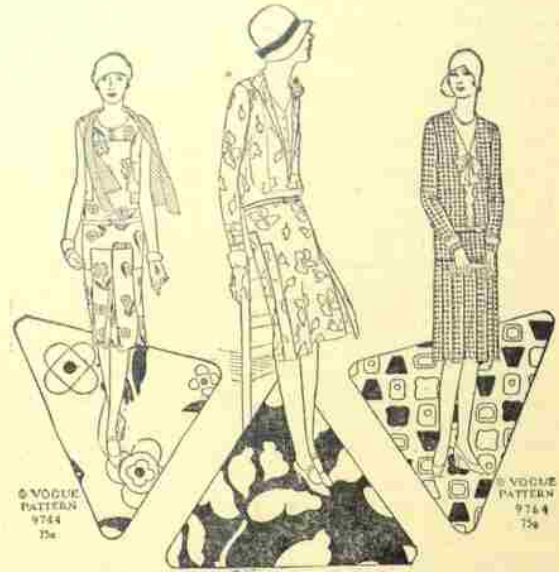
DELIVERY AT REGULAR PRICE

May Day ...

It's a charming season for everyone.

The Statesman Publishing Co.

will be happy with you in planning for this festival.



Smart Wash Fabrics Fashion Vogue-Approved Frocks

OF COURSE you need many charming little wash frocks in your summer wardrobe! That is why we have so many gay, colorful prints which only need a smart Vogue Pattern and a few easily taken stitches to be the cleverest of frocks. Tiny floral, scattered geometric, unusual modernistic designs... all are found in the reds, oranges, greens, yellows, blues and black that fashion decrees. Vogue suggests Frocks 9744, 9743 and 9764.

Jungle Prints..... 50c yd. Polo Prints..... 35c yd.
Larchmont Prints 50c yd. Polo Pique..... 50c yd.

Wash Fabrics and Vogue Patterns 1st Floor



DRESS SALE

New Spring Dresses. Values to \$14.75 **\$9.75**

A lot of dresses

Consisting of odds and ends

From THE FRENCH SHOP

On Sale at a fraction of their real value

La Bette Shop

175 North High Just West of Courthouse

FLAUNT A SCARF

Varsity! or Whoopie
All of the "up to the minute" styles
at



Quality Merchandise

Popular Prices

BERTELSON & McSHANE

The name to know in Printing
PRINTERS FOR ALL

Chemeketa at Commercial

Phone 779

Patronize Collegian Advertisers

Society

(Continued from page 4)

Co-ed Carnival and Stag Mix Held Simultaneously

The Co-eds of the University held their annual carnival at Waller Hall last Friday evening. Everyone was there from the had desperado with the big knife to the nine-foot scare-crow—also the candy vendor. In addition to the four class skits there was a stunt by members of the Glee Club and a clever musical was given by Helen Pemberton. The Sophomore Class won first place with a burlesque of "Carmen" in which Ruth Bauer and Josephine Albert carried the leading roles. Rosalie Buren and Marvell Edwards as an immigrant couple won the prize for the most effective costumes.

On the same evening the men of the campus held their annual Stag Mix at the city Y. M. C. A. Swimming, basketball, volley ball, ping pong and billiards provided the entertainment. At the close of the affair pop, cinnamon rolls, and dainties were served.

Faculty Group Enjoy Evening at Monk Home

On Saturday evening, April 20, Professor and Mrs. Cecil R. Monk entertained a group of Faculty members at their home on Center street. Their guests were Professor and Mrs. Lestle Sparks, Professor and Mrs. Frank Leamer, Professor and Mrs. Robert Moulton Gatke, Professor and Mrs. Gerald Prescott, Professor and Mrs. Roy Keene, Miss Olive M. Dahl, Miss Lois Latimer, Miss Alida Gale Currey, and Miss Lella Johnson.

Dean Olive M. Dahl entertained for the North Dakota society at Lausanne Hall, Tuesday afternoon, April 16. The rooms were attractively decorated in Japonic and daffodils.

Roberta Archibald entertained her two guests, Kathryn and Doris Beight, at a dinner party Sunday. Ruth Margaret Hall, Bing Tsai, Margery Hannah, Elsie Allen, and Alma Wattenburg were the other guests.

On Tuesday evening a surprise party was held in honor of the birthday of Bertha Babcock. Those who enjoyed the informal evening were Dorothy Boshard, Maribelle Quinn, Gertrude Oehler, Margaret Morehouse, Henrietta Bishop, Kathryn Elgin, Marion Bretz and Bertha Babcock.

Miss Helen Knott, of Oregon State College and Miss Margaret Delanty of the University of Oregon were week-end visitors at Beta Chi.

Miss Alida Gale Currey, Miss Lella Johnson and Miss Helen Mae Hiron were dinner guests at Delta Phi on Thursday, April 18.

Dinner guests at Sigma Tau on Sunday were Professor and Mrs. Roy Keene, Lillian Scott, Esther Wood, Marion Bretz, Dorothy Eastridge, and Viola Crozier.

Miss Elsie Everett was the guest of Katherine Everett at Beta Chi last week-end.

Mr. and Mrs. I. J. Comstock were guests of their daughter, Ina Comstock last Sunday at Alpha Phi Alpha.

Dinner guests at Alpha Phi Alpha last Sunday were Dr. and Mrs. Carl Gregg Doney and Professor and Mrs. Cecil R. Monk.

Miss Hazel Newhouse of Chelalis, Washington was a guest at Alpha Phi Alpha last week-end.

Mary Clamfield, Georgia Fairbanks, and Alice Laue were the dinner guests of Dr. and Mrs. Robert Moulton Gatke on last Sunday.

READ COLLEGIAN ADS.

TEAM PILES UP BIG SCORE AT NORMAL

"Willamette we have come," might have been the watch word of the Bearcat baseball team as they returned from Monmouth Tuesday night with a 12 to 3 victory tucked under their belt.

For the first time this year the would-be ball maulers struck their stride, piled up a total of 13 hits, while Kimiki, Willamette Frosh hook ball artist, held the Teachers to a scant 3 hits.

Willamette scored four runs in the first inning off of one hit. In the third inning Hank opened up with a triple, McGinn walked but was put out on second, Cardinal filed out, then two singles in a row by Gill and Gibson; Adams was safe on an error by the first baseman, all of which scored three runs. Willamette added to its already growing total with one in the fifth and 2 in the sixth and one in the ninth. Two runs in the second and one in the seventh was the best that Monmouth could do.

Gill, the outfielder, led the Willamette aggregation with four hard drives out of four times at bat.

The box score is as follows:

Monmouth	AB	H
Grund	5	1
West	5	0
Cloniger	4	1
Sternor	4	0
Watkin	4	0
Ingram	4	1
Jackson	4	0
Frye	3	0
Wunder	2	0
Bass	0	0
Totals	36	3

Willamette	AB	H
Dietz	4	1
Hank	3	1
McGinn	5	0
Seales	2	1
Cardinal	5	2
Gill	4	4
Gibson	4	1
Adams	2	1
Kimiki	4	1
McMullen	2	1
Steelhammer	2	0
Trachsel	2	0
Girod	2	0
Totals	41	13

HONORS GO TO C. P. S. IN FORENSIC CONTEST

WASHINGTON STATE COLLEGE, April 24.—College of Puget Sound won the majority of honors in the convention of Northwest province of Pi Kappa Delta, National forensic fraternity, held recently at Washington State College, taking first place in women's oratory, men's extemporaneous contests, and women's debating. Second place in men's oratory and women's extemporaneous contests also went to this college.

PATTON BROS.
SALEM'S BEST BOOK STORE
340 State St.

Say it with Flowers from
C. F. BREITHAUPT
Salem's Bonded Telegraph Florist
512 State St. Phone 380

T. Pomeroy A. A. Keene
Pomeroy & Keene
Reliable Jewelers and Optometrists
Phone 820 388 State St. Salem, Ore.

FOR FLOWERS
"Frosty" Olson
PHONE 801
Corner High and Court

STATE COLLEGE WOMEN TO ACT AS HOSTESSES

WASHINGTON STATE COLLEGE, Pullman, Apr. 18.—State College women will be hostesses to their mothers May 3, 4 and 5, when several hundred are expected to gather in response to invitations sent out for the annual Mothers' Week-end, sponsored by women students of the college.

The final day of the week-end, May 6, falls on Mothers' Day. An interesting program has been worked out by the W. S. C. co-eds, including a play, "The Molliac," presented by the National Collegiate Players, Friday night, May 3; crowning of May Queen and the women's day program, Saturday morning; Mortar Board luncheon, Saturday noon; swimming meet Saturday afternoon, men's gymnasium, and special Mother's Day programs in all Pullman churches as well as a special vesper hour program in the auditorium, Sunday, May 5.

SALEM TOURNAMENT WON BY IVAN WHITE

Ivan White finished on top of the Salem Tennis Association's tournament by winning from Hobson in straight sets. White reached the finals by winning matches from Litchfield, McGilvra, and Hageman, while Hobson advanced to the final bracket by defeating Thielson, Chambers, and Roeder. White and Minto took the doubles championship when they defeated Hageman and Haworth in three out of four sets.

The four classes are now planning tryouts for interclass tennis which will be played in the near future. The rook class saw their first action on Monday against Salem Hi in which they won one match, lost one, and called one because of rain. The Sophomore drawings were made Wednesday with Harmon and Page, Waddell and Hall, and DeHarport and McGilvra matched to play.

The Shynne Shoppe
LADIES and GENTLEMEN
147 N. High St., Salem

DOUGHTON & SHERWIN
I. M. Doughton F. E. Sherwin
HARDWARE, PAINTS AND ROOFING
Salem, Ore. 236 N. Com'l.

Better Weddings and Announcements


Liberty at State Salem
Phone 1243

"Friendly Five"
SHOES
ALL STYLES
\$5.00
Five Dollars
AARON ASTILL
Haberdasher
Masonic Temple

Patronize Our Advertisers

CHAPIN TO ACCEPT STANFORD OFFER

To Leave for Palo Alto Soon After Commencement; Will Attend Summer School

Prof. Lee Chapin has accepted a position in the Public Speaking department at Stanford University. While he is teaching at Stanford he will be working directly under Professor Lee Bassett. Although information has come only by telegram, Mr. Chapin will probably be advisor to a debate team along with his teaching in the public speaking department.

This offer came unsolicited through Robert Littler, a former classmate of Mr. Chapin at Willamette University, who at present is instructor in public speaking at Stanford.

Mr. Chapin intends to take work in the summer school there and will leave immediately after commencement as he wishes to arrive in Palo Alto in time for the wedding of Mr. Littler, and Miss Elizabeth Chase both ex-'25 Willamette students.

Mr. Chapin who is a graduate of Willamette and has taught in China for several years has been in charge of the public speaking department here this semester during the absence of Dr. Hall.

In commenting upon his renewed association with Willamette Mr. Chapin says, "It has been a privilege indeed to return to Willamette after being in strange lands for so long. I have thoroughly enjoyed my contacts with students and professors."

FRESHMEN TO PICNIC

At the freshman class meeting held Monday noon plans were formulated for a class picnic to be held Saturday, May 25. If Dean Dahl's permission is secured, the picnic will be at the coast; otherwise, some nearby place will be chosen.

Floyd Albin has been appointed

to procure cars for transportation, and Gertrude Oehler, class vice-president, will attend to all other arrangements.

"Clothes of Individuality"

They're Here!

The New Wrinkleproof
Faille Silk Ties

In solid pastel colors with futuristic patterns

\$1 of course

Polo Shirts

in 3 new colors

Collegiate to the last thread

\$1.50

Sox

A brand new weave in dress sox. Open stitch—in solid colors, that will set a new style.

Featured **50c**
At

Emmons
Tailor Furnisher Clothier

Now that Spring is here we will be glad to print those Announcements

THE J. J. KRAPS CO.
PRINTERS
1310 S. 13th Street Phone 1256

Tennis Rackets
Restrung
In our own shop
Tennis Balls 3 for \$1.25
KEN BROWN
372 State

PORTABLE PHONOGRAPH SPECIAL

See it --- Hear it

H. L. Stiff Furniture Co
COMPLETE HOUSE FURNISHERS

BEARCATS TO MEET LINFIELD SATURDAY

Team Shows Improvement; Trachsel and Gibson Vie for Place on Squad

Willamette baseball fans will be able to see a real ball game at Sweetland field this coming Saturday, April 27th, when the Cardinal and Gold team will play Linfield college. Although little is known concerning Linfield's strength, they usually have a fairly strong aggregation, and it is certainly a difficult task to even guess what Coach Silke has in store for Spec Keene's proteges this coming Saturday afternoon. But no matter how strong a lineup the boys from McMinnville present, it can be assured that Willamette will be represented with a scrappy, hustling team that can ably take care of itself. The team has been improving rapidly, and should continue to do so if the weather permits regular practices. The hitting, which has been entirely lacking, has improved until this department of the game has become a strength instead of a weakness.

Although the lineup for the game may be changed, should any player prove his merit in the practices the remainder of the week, it is quite likely that Kiminki will start on the mound, with big Ed Cardinal doing the receiving. Ledbetter, veteran pitcher, has a sore arm, but Kiminki should prove just as effective against Linfield as "Led" would be. Scales' performance at first has entitled him to a clear berth on the initial sack, and Adams will probably guard second base, while Hank, who has found his batting eye, and is socking the ball with regularity, will probably play at third. Trachsel and Gibson are both playing such great ball at short that their showing in the practice games will no doubt determine who will play Saturday. McMullen, McGill, Deets, and Gill will be Keene's choice for the outfield. All of these men can hit the ball terrifically hard, and can play the pasture positions well. Gill, especially has demonstrated his batting power with four clean hits in four times up in the last game with Monmouth. From all indications, Willamette will be represented by one of the best baseball teams ever to wear the Cardinal and Gold, and the Linfield are promised a very lively afternoon!

Y. M. COUNCIL TO MEET

Harold Shelhardt and Leslie Manker will represent Salem's city and campus Y's on Thursday, April 25, at a meeting of the Northwest Council at Centralia, Washington. The council includes representatives from city Y. M. C. A.'s and representatives from various college Y organizations of Oregon, Washington, and Idaho.

This will be Mr. Shelhardt's last official attendance of the Council as president of the Willamette Y.



CAPITOL

Now Till Sat.
Davey Lee
—In—
"SONNY BOY"
Vitaphone
Talking
Singing Special!

Coming 1st of
week
"MOTHER
MACHREE"
A Movietone
Sound Picture!

WILLAMETTE NIGHT TO BE HELD AT ELSINORE

Students Annual Theater Party
Scheduled for April 26
Students Give Acts

All Willamette students will be reunited, after their separation by co-ed carnival and stag nits, at the annual Willamette night which will be held at the Elsinore theatre on Friday, April 26.

The Cub organization is the sole sponsor of this affair. They are to receive forty per cent of the proceeds of the student tickets.

Fanchon and Marco's Variety Idea is to be featured. A mystery and magic act by Clark Woods, the Willamette orchestra, tumbling by Shiffman and Gill, and Willamette songs will complete the vaudeville program.

The photophone feature is "The Disputed Woman," starring Norma Talmadge.

CHAPTER OF PHI BETA INSTALLED AT W. S. C.

WASHINGTON STATE COLLEGE, April 24.—The formal installation of the Washington Gamma chapter of Phi Beta Kappa at the State College of Washington closed on the evening of April 6, with an address by Dr. Norman F. Coleman, president of Reed College. Immediately after

the formal installation of the new chapter, groups of honorary, alumni and student members were initiated.

SALEM SHOE SHOP
138 So. Liberty St.
(20 steps from State)
Shoe Repairing the way you
want it. When you need it.
J. R. POLLOCK, Salem, Ore.

Milkshakes---Sandwiches Sundaes



P-E-R-S-P-E-R-A-T-E-R-S

What Are They?

! NEW !

Sweaters

Figures—Plain colors, stripes, checks, fancy weaves.
Figures—Short, portly, chubby, slender—it makes no difference these new persperators fit them all.



Sweaters

With sleeves—without sleeves. The newest wine shades in pastels—Blues, greens and many fancy weaves—"They are the newest."

THREE STYLES



The "V Neck" in the new and different shades and weaves. Any shirt or tie may be worn with this style.



The "crew neck"—The most popular, we are featuring—Wine reds, Apple greens, Malacatan and rust browns in this exclusive garment.



The button coat in the many new tints add swagger and individuality to any ensemble.

THE STYLE SHOP **BISHOP'S** THE STYLE SHOP

You Have Tried Our Beer
Now Try Our Chicken Pie

XXX

We have handled W. U. Students' Accounts for 60 Years

LADD & BUSH
BANKERS
Salem, Oregon

NEIMEYER

Just Drugs. 175 N. Com'l. St.

Central Pharmacy

Perfumes Stationery

Next door to Bank of Commerce

Roller Skating

DREAMLAND

Tuesday & Friday 7 to 10 p.m.

ROTH'S

"The Best of Everything"

Groceries and Meats

Thirty Day Account Service

No Charge for Delivery

Phones 1885-6-7

134 N. Liberty St.

Ray L. Farmer Hdw. Co.

Court and Com'l. St. Phone 191

EVERYTHING IN

Hardware

Fishing Tackle and

Sporting Goods

Cars for Rent

U Drive

2-5-7-Pass. Closed Cars

1-ton Trucks

For Your Heavy Date

Wood's Auto Service Co.

545 Chemeketa St.

Salem Phone 809 Ore

Capitol Drug Store

J. H. Willett

Agents Owl Drug Co.

Only the Best

State and Liberty St.

When you Think Drugs Think

**SCHAEFER'S
DRUG STORE**

The Original Yellow Front and
Candy Special Store of Salem.

Phone 197-135 N. Com'l. St.

The Leading Druggist

Home of Schaefer Remedies