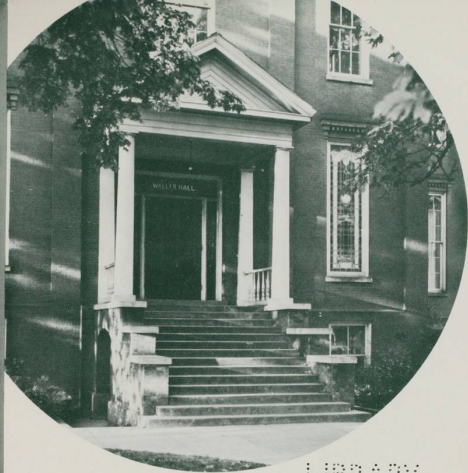




WILLAMETTE UNIVERSITY
LIBRARY

Call Number



LIBRARY
WILLAMETTE
UNIVERSITY

MEMBER LAST DECEMBER!



TRAVEL
INTERLUDE
...les ...
...th...

FOLLOW ME



MEN

THESE

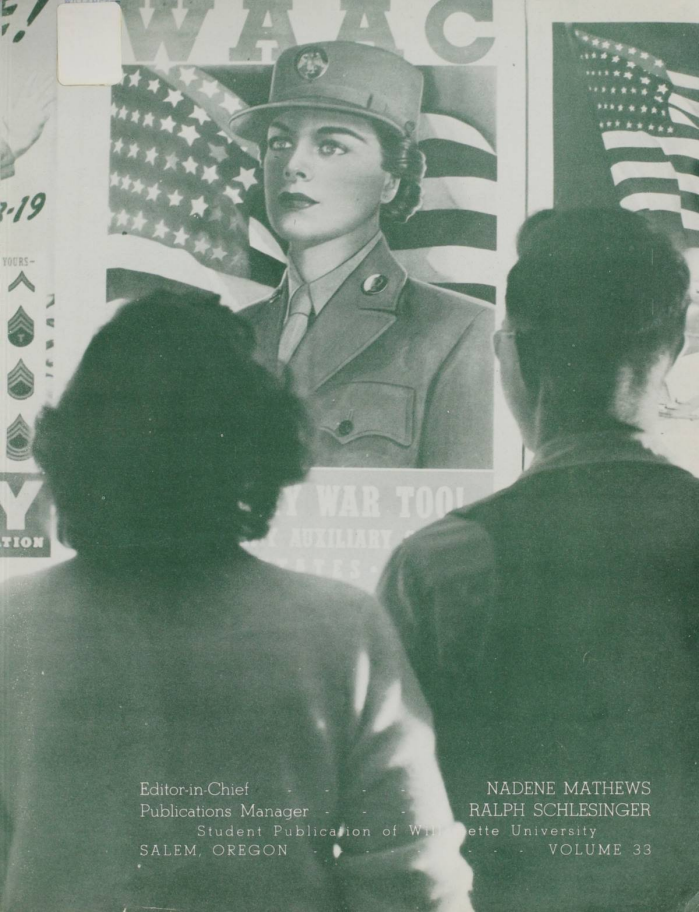
AT ANY

ARM

D INDUCTION

1943 WALLULAH

48021



Editor-in-Chief

Publications Manager

NADENE MATHEWS

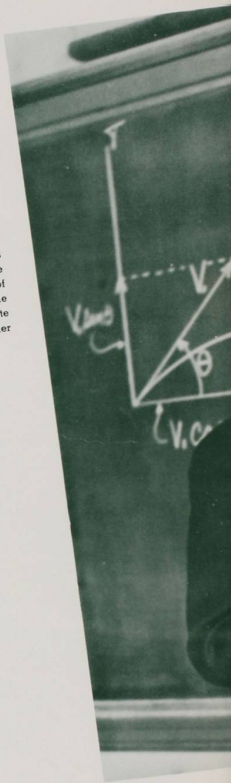
RALPH SCHLESINGER

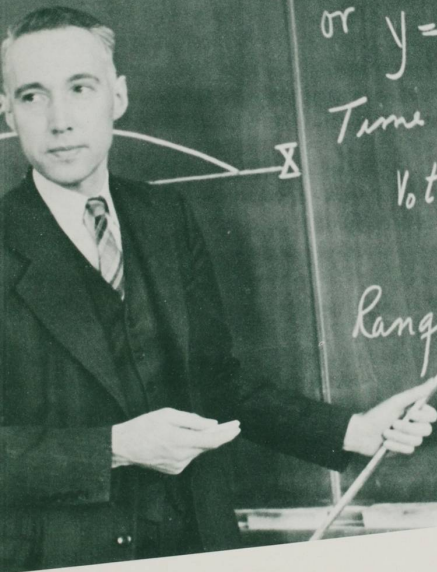
Student Publication of Willamette University

SALEM, OREGON

VOLUME 33

As Willamette entered its second year of war, we found that the student body had answered the call to the colors. Over 50 per cent of the young men about the campus were in one of the various reserve programs. The navy offered V-5 for all men desiring to become pilots in Uncle Sam's navy, V-7 for upperclassmen wanting to become deck officers and V-1 for underclassmen wishing to transfer to either V-5 or V-7 at the end of their sophomore year. The remainder of the men were divided between the Enlisted Reserve Corps, the Army Air Corps Reserve or the Marine Corps. Now the army has called all its reserve students, the marines are being called slowly and the greater part of the Naval Air Corps Reserves have gone. With the aid of the inevitable draft, the campus has been swept clean of nearly every male student except those in either V-1 or V-7. These remaining men anticipate being put into uniform and sent back to school at Willamette or some other college in order to complete their education for war.





Given a projectile or

$$\begin{cases} x = V_0 t \cos \theta \\ y = V_0 t \sin \theta \end{cases}$$

or $y = x \tan \theta$

Time of flight

$$V_0 t \sin \theta - \frac{1}{2} g t^2 = 0$$

Range: $x = V_0 t \cos \theta$


$$= \frac{V_0^2 \sin 2\theta}{g}$$

With the emphasis on classes designed to better equip young men to win the war, Willamette has met the demand for physics, math and physical fitness. Many of these classes have doubled and even tripled in enrollment, making it necessary for the professors to "double in brass." Professors Clark, McLeod and Hutchins helped Professor Brown in instructing physics labs as well as handling their usual classes. Miss Doughty was added to the mathematics department to aid Dean Luther, and Spec Keene's physical education majors handled the intensified physical fitness program. However, the men were not the only ones who had war emergency classes designed for them. A new class in mechanical drawing was formed and classes in nutrition were offered by the home economics department so that women could equip themselves to do war work. Going to college is now a serious business, and the Willamette students have accepted it as such. An education is not our privilege now; it is our patriotic duty; it is our way of winning the war.





Push-ups, rope-climbing, chin-ups and other vigorous calisthenics are the order of the day for the men of Willamette. Each man takes five hours of physical training per week, a plan inaugurated this year in order to meet the requirements of the reserve programs. The success of this step-up in gymnastics can be accredited to Spec Keene and his staff of physical education majors.



Posed of course, but it shows what Les Sparks Red Cross students can do in case of a head or arm injury. Larry Wills, Ted Jones, Elmer Harrold and the victim, Bill Nesbitt.

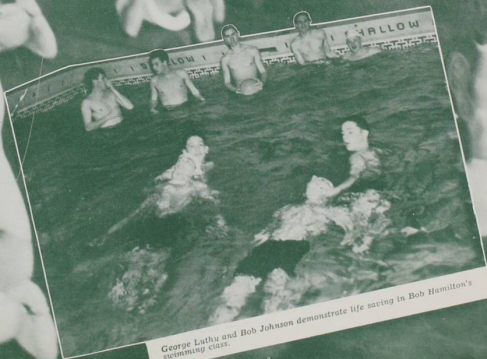


Jack Mudd and Bob Simmons demonstrate commando tactics for the benefit of the physical education instructors. Left to right: Sparks, Toolson, Schaud, Adams, Hanauska, Cameron, Stacer, Keene.



On the first rope: Bill Hamusaka, Jack Mudd, Wally Olson. On the second: Bob Simmons, Ammon Adams, Dave Demeter.

Classes offer not only exercises but also competitive sports. The gym classes had their own intramural basketball and softball tournaments and the swimming classes conducted races almost daily. These classes offer the men a chance to develop their athletic powers and they are rapidly discovering that it is not only beneficial but also fun to get in shape and to keep in shape.



George Luthy and Bob Johnson demonstrate life saving in Bob Hamilton's swimming class.

Football



Spec Keene demonstrates gridiron tactics in a chalk talk in the locker room of the Willamette gym. That's Captain Ted Ogdahl looking over Spec's shoulder. Above, front row: Balkovic, Kahle, Macy, Connors, Fulbin, Barnick, Winegar, Baker, Donnoan, Stacer. Second row: Anderson, Winkensuerder, Ogdahl, Douglas, Hardy, Furno, Weaver, Lewis, Geddes. Third row: Assistant Coach Fraiola, Deiner, Constable, Griffiths, Schmidt, Jacobson, White, Kelly, Osterhaut, Borrett, Rogers, Ercolini, Stanley, Copenhauer, Keene.

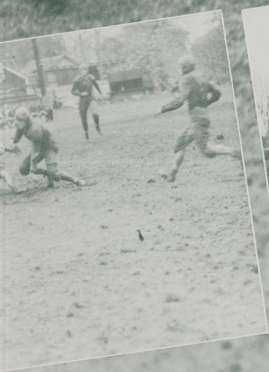


With only one team of veterans and a dearth of Freshmen, "Spec" Keene launched his gridiron wars. Bolstering up a behemoth if not an experienced line were veterans Red Barbour, Ralph Rude, Dave Kelly, Andy Rogers, George Constable, Garrel Deiner, Al Barrett, and Pat White. Returning to a small but speedy backfield were Chuck Furno, Ken Jacobson, Bob Weaver, Cece Conners, and Captain Ted Ogdahl. These lettermen aided by freshmen stars Gene Schmidt, Hank Ercolini, Bob Donnoven, and Rex Hardy rounded out a small but powerful squad.



There was less of "foot" in football in the Northwest Conference Champs '42 season than ever before, but the punt or the field goal are never needed when a great offense gets under way. The 'Cats sustained an early season defeat at the hands of a powerful Portland University aggregation, but hit their stride in the following clashes, winning all by impressive scores. They ended the season with a 17-0 Thanksgiving Day victory over Whitman, which gave the Bearcats their fourth consecutive clear-cut championship.



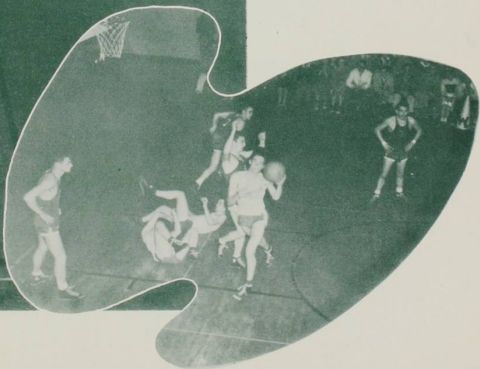
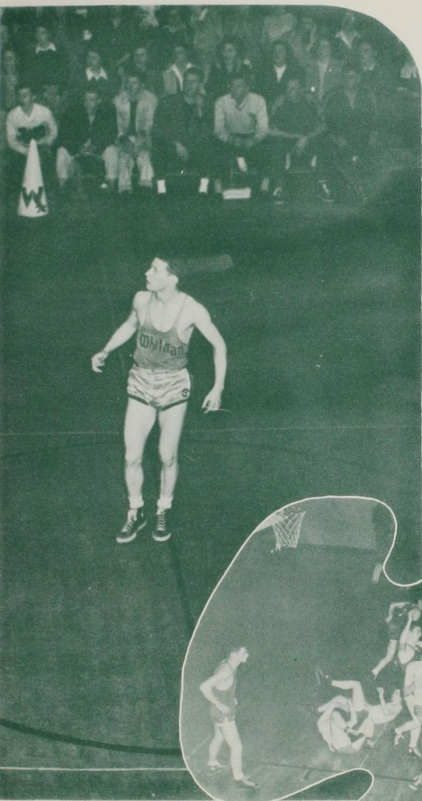




The winning basket in the second game of the Whitman series was shot by lanky Jack Vaughn. Just under the basket is high-scoring Gene Schmidt who piled up 129 points for the Bearcats this year.

Basketball

To tie for top spot in the conference, the Bearcats had to sweep the Whitman series and split the league title with Linfield's powerful Wildcats. Winning an impressive victory on their own floor, the 'Cats found it more difficult to hit the fan shaped backboards in Linfield's gym, losing by a humiliating 52-28. In other contests the 'Cats beat the highly touted Globe Trotters and split even with the Portland Pilots in the annual civil war.

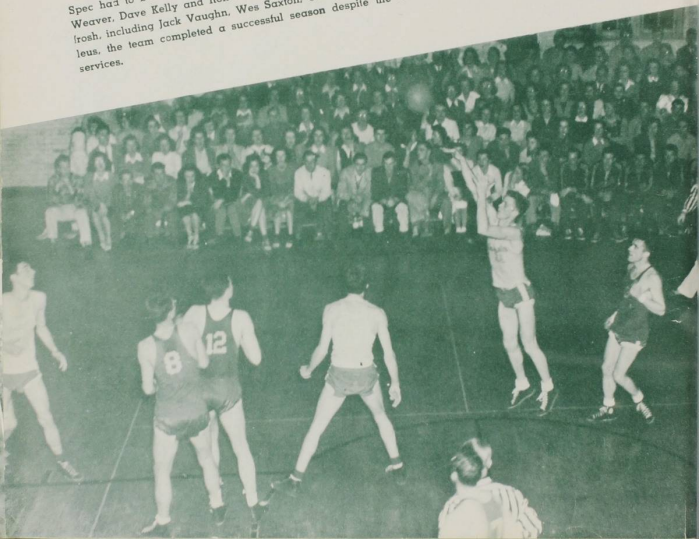


Varsity



Scenes from a Linfield game. Above, a jump; below, Gene Schmidt tosses for a basket.

Spec had to build his hoop squad around Don Barnick, the sole returning felt winner. He recruited Bob Weaver, Dave Kelly and Ron Runyan from last year's freshman ranks, and several of the present crop of frosh, including Jack Vaughn, Wes Saxton, Gene Schmidt and Duane Ragsdale. With these men as a nucleus, the team completed a successful season despite the constant threat of men leaving for the armed services.

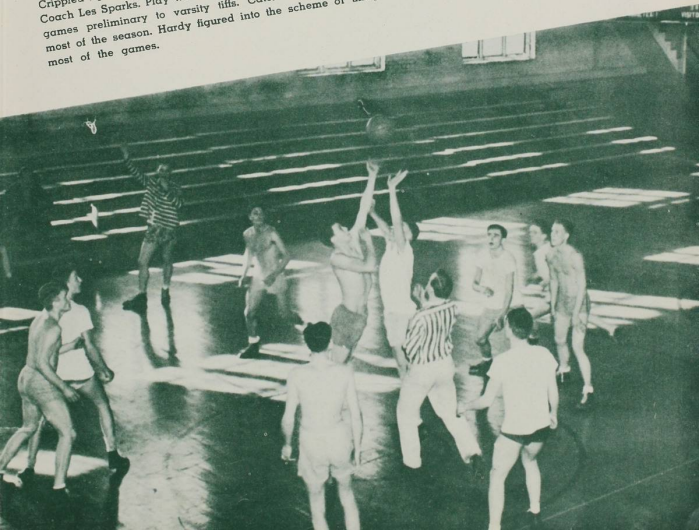


Frosh



The freshman team, front row: Eddy, Bates, Cate, Stanley. Second row: Luthi, Moore, Hardy. Third row: Hilton, Scott, Strawn/Jord, Ruth, Orange, Larson. Below, the Freshmen A's play the Freshmen B's.

Crippled by the loss of five men to the varsity, the Cubs were channeled through a 50-50 season by Frosh Coach Les Sparks. Play was afforded in Salem City League, Class A Intramural Loop and independent games preliminary to varsity tiffs. Cate, Copenhauer, Stanley, Moore and Bates constituted the first five most of the season. Hardy figured into the scheme of things, sharing with Cate high scoring honors for most of the games.





Baseball



A dearth of pitchers, a whiz of an infield, a couple of pros and a baseball-loving coach made up the 1943 ball club. Pride of the club was Brooklyn's Bill Hanauska, who set Oregon, Pacific coast champs, down 4-3. The big boys at bat were Clint Cameron and Ben Schaad, while in the field freshmen Bud Larson and Don Hilton were the big guns. Although the club lacked experience, the men showed promise of defending victoriously the conference crown.





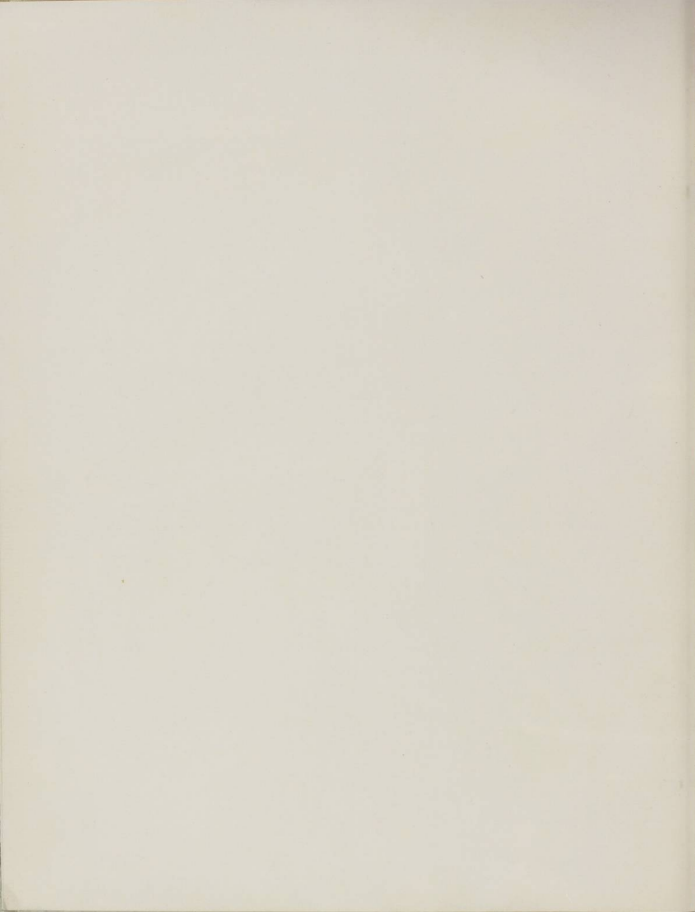
John Macy and Ronnie Runyan starred in track. They helped with the frosh contenders, too, when no coaching was available. Runyan sparked the Kappa ball team.



Track was hit hard by the war as were all other sports at WU, although this was the first year for more than a decade that the aspirants were able to use their own oval. Returning lettermen were as scarce as gas stamps and the bulwark of the team was made up of Andy Rogers, Ronnie Runyan, Bill Cate, Merle Palmer, George Russell, Lloyd Griffiths, Lynn Leigh.

The Rubes, defending champs, Alpha Psis, Sigma Taus and Kappas made up the four team scftball loop at Willamette. Mid-season predictions placed the Psis and Rubes in the finals, since both teams had won all and lost none of their games. The league is run by mentors Hanauska, Olson and Kunke.









WHO'S WHO 1943

Who's Who in American Colleges and Universities lists these students. Left front: Keith Markee, Miriam Jensen, Ted Ogdahl. Second row: Dix Moser, Benajah Briggs, Kent Markee. Third row: Winston Taylor, Eleanor Todd, Ruth Matthews. At the top: Bob Hamilton, Dorothy Tate, Ralph Schlesinger. At the right: Dick Stacer, Nadene Mathews, Mary Margaret Livesay, Harriett Monroe.



Largely responsible for a successful year and for increased interest in student activities is ASWU president Bob Hamilton. "Bones" helped organize the new Bearcat Cavern, he introduced more all-campus social functions, and he headed the highly centralized, streamlined student government.



Ralph Schlesinger's blue convertible was a familiar sight around town as Ralph scouted ads for Willamette's student publications. Jerry Anderson helped put Collegian advertising over the top until calling of the ERC put a for-the-duration end to his college career.



Breaking the long-standing tradition that has seen only seniors in the editor's chair, Dix Moser, a junior, won the editorship of The Collegian last spring and headed the paper toward its fourth straight All-American rating.

Wednesday night in Waller's basement finds student journalists putting out *The Collegian*. There are the questions, "How much space will society and sports take?" "Shall it be a feature or shall it be news?" There is the task of writing heads and the dash into the Wallulah office for extra typewriters or chairs. Finally, about 2 a. m., with the last story typed, the last head written, the last column completed, weary writers heave a sigh of relief as another weekly crisis is passed.



Lois Butler, who began the year as copy reader, switched places at mid-term with Catherine Thomas, who started out as news editor.

Wallulah editor Nadene Matheus found time to report special events for the *Collegian* during the year. Feature editor Ruth Matheus (now it can be told) was Willa, author of the year's most popular column, "Dear Private Johnny." Wally Olson and Little Wicks managed the sports pages and Ruth Finney edited society.





Nadene Mathews, editor of the Wallulah, puts away the yearbook's pictures and paper cutter this spring to take up the duties of editor of The Collegian for the coming year.

The man with the camera on the campus this year was Jack Glaspe, who deserves credit for many of the pictures in this Wallulah.

After a year of interesting work in putting the book together, the staff members proudly but modestly present the 1943 Wallulah. This is you, as you are from day to day, and as you are from big event to big event, in your life at Willamette.

Betty Adkins worked on the class section; Margaret Pemberton, faculty; Ella Rose Mason, living groups; Reeve Schmidt, art and women's sports. Ted Ogdahl and Merle Palmer edited men's sports and Jean Fries was picture editor. Lois Butler divided her time between the Wallulah activities section and her Collegian work.



For those student projects that require special and specialized attention, committees, boards and councils are the answer. Thus outstanding students in various fields guide the work, solve the problems and keep things in smooth running order at Willamette. Many headaches and little glory accompany the work, but jobs consistently well-done are the reward.

The publications board meets in the Northwest History room of the library to decide matters of editorial and financial policy. Clockwise: Bob Hamilton, student body president; Ralph Schlesinger, publications manager; Dix Moser, Collegian editor and president of the board; Marco Ringnald, journalism professor; Nadene Mathews, Wallulah editor; Margaret Ewing, secretary. Graduate manager Lestle J. Sparks is missing.



The student council appointed the May Weekend manager at their February dinner meeting. Clockwise: Dorothy Tate, first vice president; Hume Downs, second vice president; Caroline Daby, late school president; Bob Hamilton, Margaret Ewing; Bill Cooke, freshman representative; Lestle J. Sparks, Dix Moser; Larry Wills, sophomore representative; Dick Stacer, senior representative; Nadene Mathews; Dean Chester F. Luther, adviser; Ralph Schlesinger; Chuck Furno, junior representative.



Second semester Cavern managers, Jay Oliver and Hollis Huston serve Keith and Kent Markee, the original managers.



Control and regulation of interfraternity affairs is the concern of the interfraternity council. Left to right: Rich Wicks; Dr. R. M. Gatke, adviser; Mark Hatfield, Bill Nesbitt, John Martin, Dick Stacer, Gene Olson.



The intersorority council meets monthly to consider the programs and policies of the three houses. Left to right: Olivia Olson, Lois Gladden, Ruth Burgoyne, Eleanor Todd, Betty Sackett and adviser, Dean Olive M. Dahl.



Homecoming's annual rain didn't dampen the spirits of the rally team. They donned coats and kerchiefs to lead the crowd through Bearcat yells, "Excuse It, Puget" chants and finally, "The Victory Song" as Willamette whipped CPS. Left to right: Jack Wittliff, Jean Carlin, Charles Wicks, Jane Findley, Einar Johnson, Myra Madsen, Helen Craven.





Intramural competition, team sports and individual activities highlight the year for the Women's Athletic Association. Swim nights, overnight bicycle trips and the Tin Can breakfast foster the spirit of comradeship and "sports for fun." Opportunity to participate in softball, basketball, soccer and volleyball is offered to women who like recreation and team sports. Bowling, tennis, skating, badminton, ping-pong and archery are available for leisure hours of individual sport.



Music



Under the baton of the new director, Lewis Pankaskie, Willamette musicians give forth with everything from Beethoven to Irving Berlin. During marching practice the bandsmen ran afoul of physical fitness students using the field, but nevertheless they worked out formations which added color and spirit to games and rallies. Pankaskie also organized the University Symphony which won generous applause in its appearances this year.





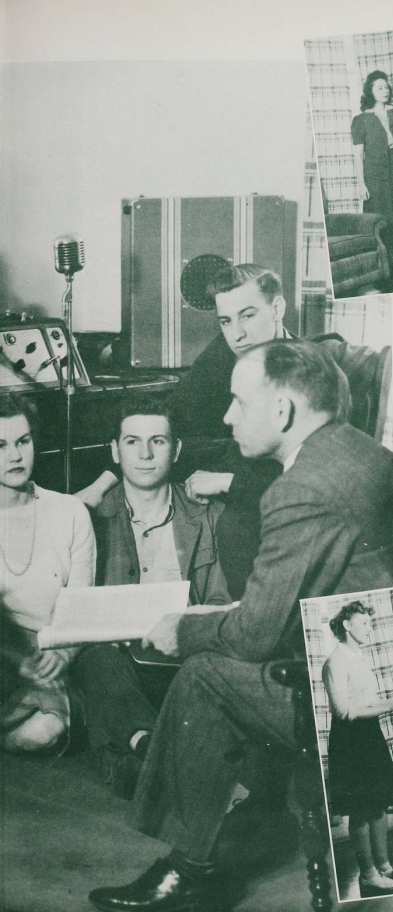


In spite of the A Cappella Choir's somewhat diminished male section this year, sounds from the music hall on the west end of the campus continued to give passers-by a hint of the vocal preparation that preceded the choir's appearances in concert or in chapel. Transportation difficulties made the annual trip impossible, but choir director Melvin H. Geist had spirited cooperation from all in practice and in performance.



The story behind the impressive list of Willamette forensics achievements usually begins in an elementary course where the ambitious frosh undergoes a relentless campaign against such unforgivable effects as lazy lips, immovable jaws and idle tongues. Still another period of incubation in the forensics inner sanctum with special instruction by Dr. Rahe is required before the winner is produced and another cup is added to the array.



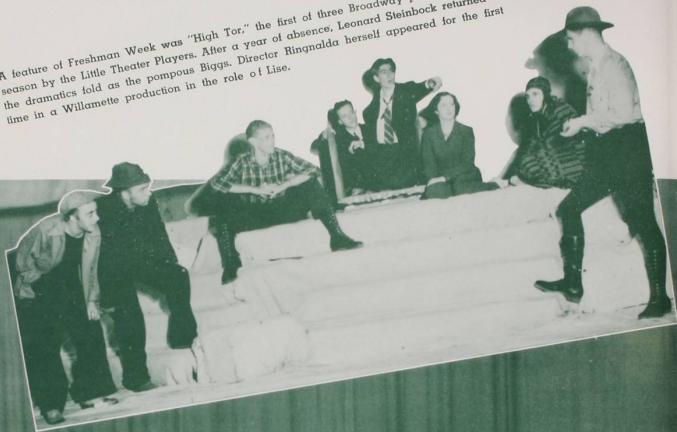


Barbara Hathaway prepares to record her speech while Leroy Long serves as technician and Catherine Thomas listens. Barbara won second place in State Peace and Junior Women's Oratory and Leroy and Tommy both won firsts in State Extemp at Linfield.

Darlene Dickson, second place winner in State Old Line Oratory, practices her speech on Wally McCell, Ray Short and Hal Adams. Wally and Hal took second in Senior Men's Debate in the Western States Tourney at San Jose and Ray took second in After Dinner Speaking at Linfield.



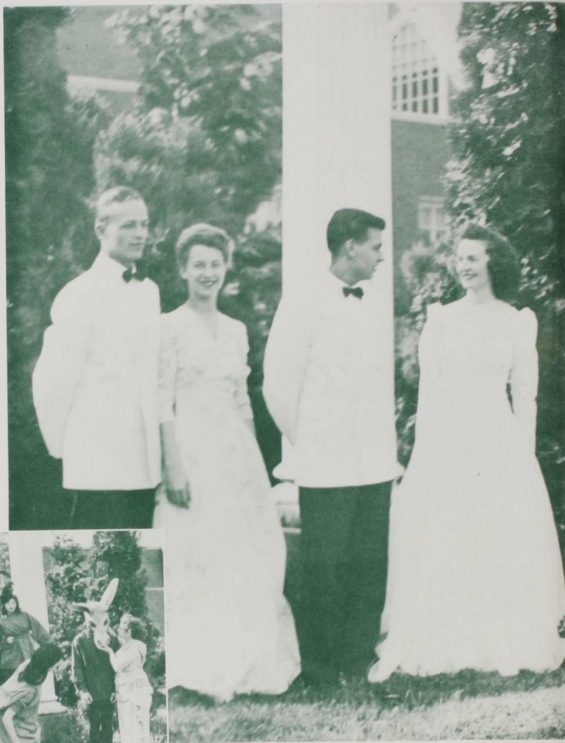
A feature of Freshman Week was "High Tor," the first of three Broadway plays given this season by the Little Theater Players. After a year of absence, Leonard Steinbock returned to the dramatics fold as the pompous Biggs. Director Ringnald herself appeared for the first time in a Willamette production in the role of Lise.



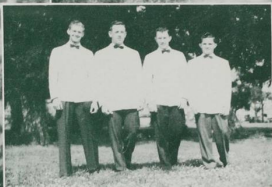
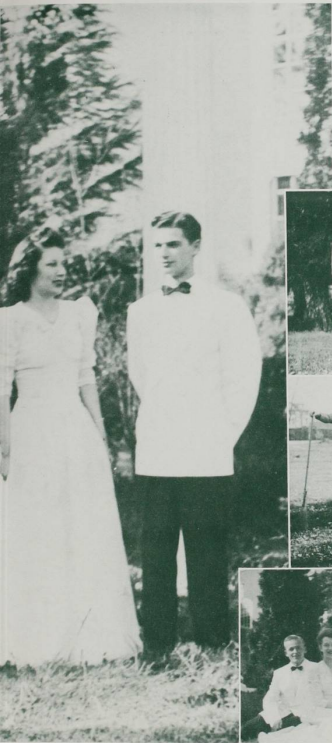
The climax of May Weekend and the dramatics year was "Arsenic and Old Lace." A naturally unmenacing Dale Gollihur became a very menacing Jonathan, aided in his crimes by Charles Lovell as Dr. Einstein. Lenore Myers gave a capable performance as Elaine and threw a true fit of hysterics when threatened by Jonathan.



The Players were among the first amateur groups to play "The Philadelphia Story." Puck Phillips won applause in her portrayal of Tracy Lord, and Ruth Matthews was a natural as the woman photographer. Giving star performances, too, were Dix Moser as Uncle Willie, who delighted in pinching members of the opposite sex; Barbara Hathaway as the spoiled younger sister and Corydon Blodgett as Mike, the writer.



From the campus clean-up and picnic Friday morning to the choir concert Sunday afternoon, May Weekend was crowded with enjoyment. Climaxing the festival and making it an outstanding memory were the impressive coronation ceremonies and the presentation of "A Midsummer Night's Dream" and "Arsenic and Old Lace."



The honor of Queen was bestowed this year upon the school's most gracious independent, Harriett Monroe. Alpha Phi Alpha's two tall seniors, the blond Dorothy Tate and the brunette Olivia Olson were princesses. Royal escorts were Hume Downs, Bob Albert and Mark Hatfield, all Kappas.



Thrill of the year came to tiny Mary Jean Huston when she was picked Queen of the Junior-Senior Prom by movie star Walter Pidgeon. Escorting the Queen and her two princesses, Sybil Spears and Barbara Diefendorf, were three proud men of Sigma Tau, John Martin, Larry Wills and Orel Davidson.



Celebrating in the Cavern was the order of the post-election jamboree for the retiring and newly-elected student body officers. Under president John Macy they plan to carry on a round of student activities during the summer semester.

Not to be forgotten are the New Year's Eve masquerade (and for those who never found out, Jack Glasse was the ghost), the student body dances and the fraternity and intersorority formals. Sorority women entertained their dates at the fall formal to the music of George Crary.

An unusual but welcome visitor to the campus this year was snow—deep snow. It caused quite a flurry outside and in the classrooms, too, when it fell during the week of first term finals.



Freshman Glee

The juniors showed "Such enthusiasm you will seldom ever see" and smiled their way into the top spot of the 1943 Freshman Glee when Margaret Pemberton and Nadene Mathews showed them how to swing Ray Short's "That What We Found at WU" and Dix Moser's library and Kangaroo Kourt scenes, and when Pianist Diefendorf dreamed up a boogie bass accompaniment.



Losing freshmen swim the mill stream.

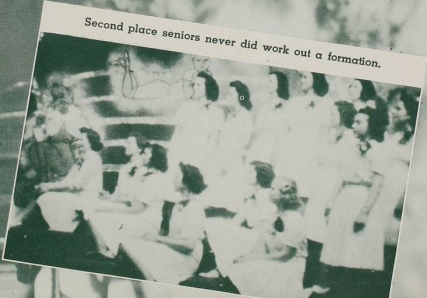




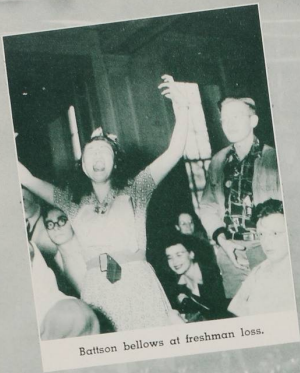
A perfect score with '44!



Ray Short "started conversation with a rather lovely face."



Second place seniors never did work out a formation.



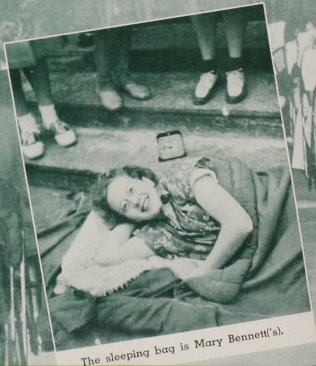
Battson bellows at freshman loss.



A Sig and a couple of Kappa queens.



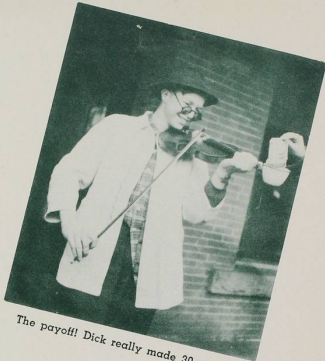
North view of Hathaway's washing.



The sleeping bag is Mary Bennett('s).

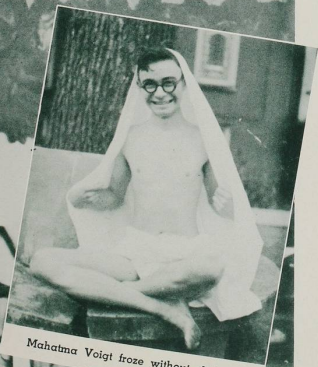


E. J. very nearly got pie-eyed.



The payoff! Dick really made 30 cents.

"And you poor, poor freshmen, and you poor, poor freshmen, when you hit that icy water over there!" proved to be a prophetic parody on the part of the juniors for the "Bemuddled, befuddled and worried" frosh in their keyboard formation failed to strike a responsive chord with the judges and they hit a sub-dominant fourth in the Glee.



Mahatma Voigt froze without clothes.



Mammy Madsen shampoos Shelton.

Homecoming started off with a shout as Frosh broke tradition by rising at 2 a. m. to rake leaves and to serenade the houses. With "Excuse It, Puget!" as their battle-cry, the rally squad led a serpentine across the campus to the governor's office, and again chanting that cry, Homecoming football fans watched the Bearcats roll up a 33-2 score against CPS.





Parents and alums were University guests at open house and at the supper to hear CPS's president and Willamette's former Freshman Dean, Dr. R. Franklin Thompson. The Little Theater's presentation of "The Philadelphia Story" starring Puck Phillips and Corydon Blodgett, shown here at the Homecoming dance, closed the annual celebration.

KANGAROO KOURT

Pat and Marie, a boy on each knee.
Come live with me and patched up you'll be!





Gilson rolls 'em in the aisle.

Size 42 and rationed, too. Fed je and figure by Formfit.

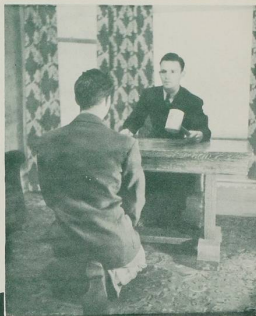


Hell Week

"Keep it off the campus" was the warning of the interfraternity council at the beginning of Hell Week, so there were no such stunts as climbing Lausanne's fire escape for the president's signature or the wooden shoes of some girl on third floor this year. Hazing and stunts were kept within each house as the members impressed pledges physically and mentally with the importance of house membership.



Solemnity marks the Sigs' night court session.



Pledge Witzel plays shoe shine boy for the Psis.



Kappas put their pledges through the hack of membership.

RUSH WEEK

means pandamonium at Lausanne when the bids come in.





Breakfast at Beta Chi



Afternoon tea at Alpha Phi Alpha



Dinner at Delta Phi



SUNDAY Ruth Farmer and
Miriam Oakes meet
on the front steps of Lausanne Hall.

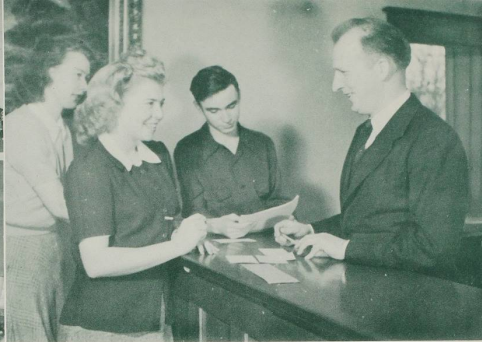


MONDAY The Smiths and
Dean Dahl greet
Bonnie Dickson at the faculty reception.

FRESHMAN

WEDNESDAY Mrs. Ring-
nalda stars
with Willamette Players in "High Tor."





TUESDAY Margie Noll,
Mary Nims and
Allan Voigt register with Walt Erickson.

WEEK

THURSDAY Five freshmen
exchange sig-
natures at YM-YW formal reception.

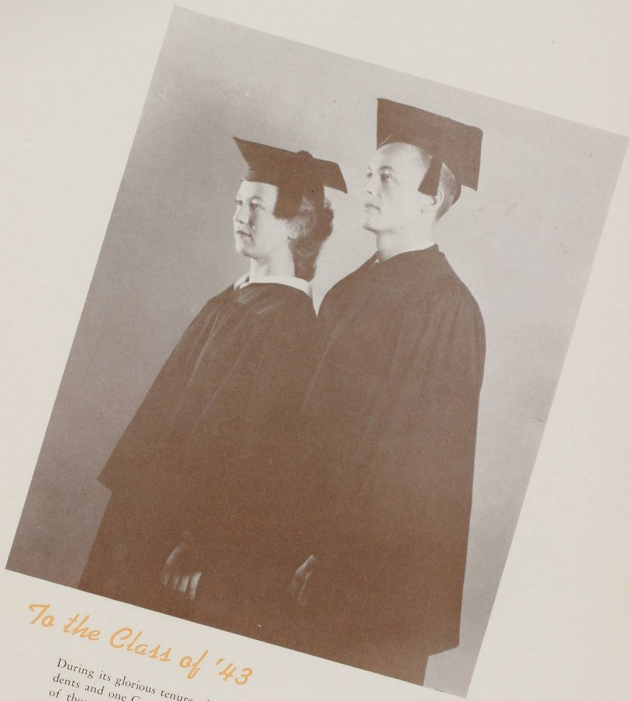


FRIDAY Freshmen, food and
Jack Glasse at the
opening of the student union.



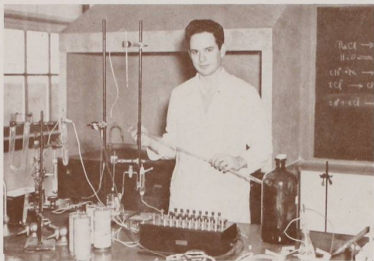


WILLAMETTE UNIVERSITY
Engineering Drawing 9, 1941
Plate No 2



To the Class of '43

During its glorious tenure, the class saw three university presidents and one Centennial celebration. More than three-fourths of those who entered as freshmen resigned to the difficulties of obtaining an education in wartime, but it's '43 to the finish, and proud to be the senior class of Willamette university.



First semester president, Bill Herrick works in one of his seven labs per week. The experiment is a potentiometric titration of manganese in steel.

PACE

Setting the pace for the senior class are the officers and leaders who have served quietly, willingly and effectively for four years, to the further advancement of their class, of the University and of the idea of education.



Right-hand woman to dramatics coach, Ringnald, Edna May Hopfer takes a little time out to pose for the Wallulah camera.

Tall, dark, and Sigma Tau characterize Blue Key member, John Martin, president of his fraternity.



SETTERS



Peter Faminow doubles his duties by presiding Alpha Psi the first semester, the senior class the second semester, and teaching Russian all year.

FIRST SEMESTER OFFICERS

President	- - - - -	BILL HERRICK
Vice President	- - - - -	EDNAMEE HOPFER
Secretary	- - - - -	REBA LEHMAN
Treasurer	- - - - -	HAL ADAMS
Representative	- - - - -	DICK STACER

SECOND SEMESTER OFFICERS

President	- - - - -	PETER FAMINOW
Vice President	- - - - -	HARRIETT MONROE
Secretary	- - - - -	JEAN JACKSON
Treasurer	- - - - -	MERLE PALMER
Representative	- - - - -	DICK STACER



Quiet Harriett Monroe, Lausanne's first term president, leaves the Hall on her way to class.

Ruth Matthews, actress, journalist and humorist unsurpassed, stands near the steps of old Waller hall.



Edna Mae Hopfer
Miriam Jensen
Gilbert Leiser
Muriel Lindstrom

Jean Jackson
Reba Lehman
Flora Leonard
Harold McAbee

1943

Harold Adams
Beulah Briggs
Shirley Caulfield
Peter Faminio
Lois Gladden
Glennerva Harnsberger

Martin Barber
Dean Byrd
Oral Davidson
Eley Fredrickson
Jennette Graber
Franklin Herrick

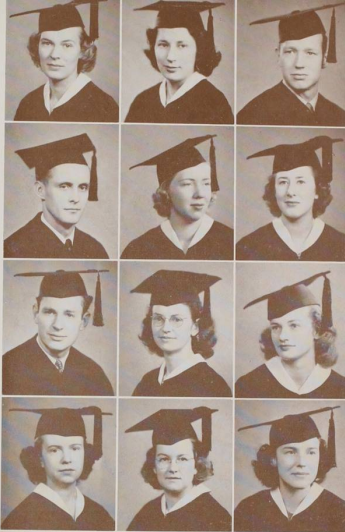
Dawn Bates
Dorothy Calderwood
Hume Dolens
Zoe Fretz
Robert Hamilton
Betty Holm



Helen McCollough
Wilma Matthes
Lois Mayer
Harriett Monroe

John Martin
Ruth Matthews
Ervin Miller
William Nesbit

SENIORS



Beverly Nordean
Merle Pulmer
Ralph Schlesinger
Patricia Short
Andy Sola
Winston Taylor

Olivia Olson
Beryl Seacut
Reeva Schmidt
Helen Davis Simpson
Richard Stacer
Barbara Viesko

Wallace Olson
Betty Sackett
Margaret Seigmund
Eloise Smith
Dorothy Tate
Jean Moore Williams

As a profitable point of contact between students and professors senior scholars are appointed in each major subject for special study of teaching methods, to read notebooks and papers, to assist in laboratory work and to do occasional practice teaching. Outstanding juniors were chosen as professors' assistants throughout the year to replace the war-depleted ranks of seniors.



SENIOR



BOB ALBERT
French
LOIS GLADDEN
Sociology



PAT BYRD
German
BOB HAMILTON
Political Science



HUME DOWNS
Zoology
MIRIAM JENSEN
English



ELVY FREDRICKSON
Mathematics
MURIEL LINDSTROM
Economics



ZOE FRETZ
Business Administration
RUTH MATTHEWS
English





Betty Sackett and Dick Stacer prove that scholarship and activity exist compatibly in the same person. Betty served as senior scholar in home economics, and Dick, in history. There their work only began, for they served as presidents of the sister-brother houses, Delta Phi and Alpha Psi Delta, and as treasurer and president respectively of the sister-brother honoraries, Cap and Gown and Blue Key.

SCHOLARS



BEVERLY NORDEAN
Education

OLIVIA OLSON
Education

PAT RYAN
Spanish

BETTY SACKETT
Home
Economics

BEN SCHAAD
Physical
Education

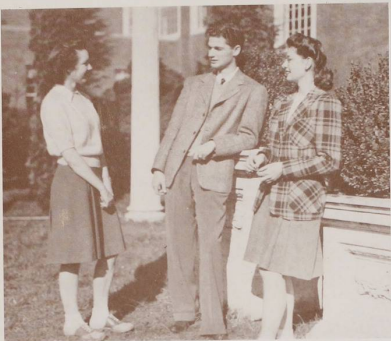
REEVA SCHMIDT
Physical
Education

HELEN SIMPSON
English

ELOISE SMITH
English

DICK STACER
History

DOROTHY TATE
Biology



May Weekend manager-Kappa president-student chapel chairman Mark Hatfield chose Delta Phi's Dottie Estes and the silver voiced Barbara Diefendorf to help him plan the May Day celebration.

THESE JUNIORS SERVE



The smiling deep-voiced instructor of Williamette mermals at the "y" is energetic athlete Phyllis Gueffroy of the WAA.



Besides being student minister, Ray Short finds time for being general plee chairman, choir manager, and for entertaining friends with his songs and guitar.

In planning student body dances, directing athletics, focusing student attention on campus religious groups, and in supplying several managers for the Cat Cavern, the juniors display their versatile talents. This variety and vitality characterize the contributions which make them an integral part of campus life.



Markee stands for twins and twins, for doing things together. Keith and Kent with Sybil Spears planned a never-to-be-forgotten Homecoming celebration.



Working together on YW and YM cabinets, or separately in school publications and in choir, Ella Rose Mason and Ward Miles symbolize the juniors' spirit of service.



TED OGDahl

President of his class and captain of the football team first semester, Ted Ogdahl took over the editorship of men's sports for the Wallulah second semester.

Adams
Boyce
Byrd, M.
Demeter

Albert
Breuster
Byrd, P.
Dickson

Bendiksen
Bucurencu
Carlson
Dieffendorf

Barnick
Buckner
Case
Diener

Barbour
Burgoyne
Cooper
Ellis

Blanding
Burton
Crawford
Estes

J
U
N
I
O
R
S



FIRST SEMESTER OFFICERS

<i>President</i>	- - - -	TED OGDahl
<i>Vice President</i>	- -	SUSANNA SCHRAMM
<i>Secretary</i>	- - - -	RUTH FINNEY
<i>Treasurer</i>	- - - -	JOHN MACY
<i>Representative</i>	- - - -	BILL HOBBS

Juniors began accepting responsibility and displaying originality when the Markee twins and their assistant, Sybil Spears, innovated Parents' Day as a part of the Homecoming celebration. Including editors Nadene Mathews and Dix Moser, and Ogdahl, class president and football captain, eight of the 14 Willametteites selected for Who's Who were juniors.

*Ewing
Furno
Hawkins
Hatch*

*Fanger
Gleason
Healy
Jacobson*

*Findley
Gueffroy
Hobbs
Johnson, J.*

*Finney
Hadley
Holmes
Johnson, W.*

*Fraiola
Harrold
Huston, H.
Jory*

*Fry
Hatfield
Huston, M. J.
Judd*



J
9
4
4



JOHN MACY

Maintaining the tradition of Alpha Psi leadership was John Macy, one of Spec Keene's star tracksters and second president of the junior class.

Kells
Long
Mathews
Oliver

Kister
Luthy
Miles
Owen

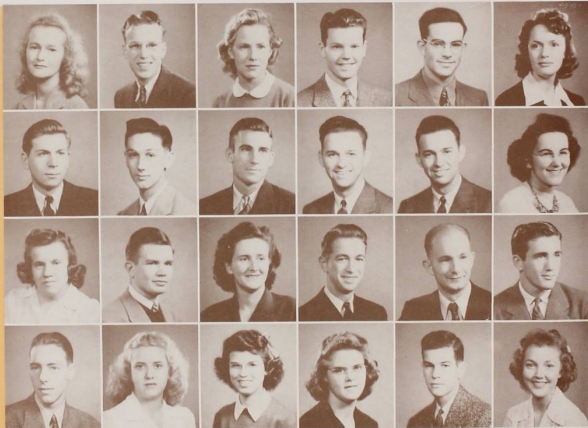
Koschmider
Macy
Moore
Payne

Lee
Markee, Keith
Moser
Pemberton

Libby
Markee, Kent
Nye
Perry

Livesay
Mason
Opdahl
Phillips

J
U
N
I
O
R
S



FIRST SEMESTER OFFICERS

President	- - - - -	JOHN MACY
Vice President	- - - - -	LOIS PHILLIPS
Secretary	- - - - -	JAN JOHNSON
Treasurer	- - - - -	DON BARNICK
Representative	- - - - -	CHARLES FURNO

Traditionally May Weekend preparations were the most important second semester junior activity. Class enthusiasm for this annual springtime festival was earlier generated by the winning of Freshman Glee. New faces in the limelight were those of Vespers president Margaret Pemberton, nimble-fingered pianist Barbara Diefendorf, and Cavern managers Huston and Oliver.

Pierstorff
Sechrist
Spears
Torgeson

Pomeroy
Sherman
Stricklin
Tracy

Ransom
Short
Swanson
Van Skike

Ryan
Siewert
Taylor
White

Schaad
Sipes
Todd
Wilson

Schramm
Sparrow
Toolson
Zimmerman



1944



DAVE TESARIK

At ease either on the tennis court or presiding over the sophomores, Dave Tesarik was active in all class affairs until he left school at mid-term.

Acheson
Arnold
Burkhart
Carkin

Adams, R.
Burratt
Burnet
Carolan

Adams, S.
Bell
Burns
Creus

Adkins
Bennett
Burton
Chusid

Anderson, C.
Birch
Butler
Cutler

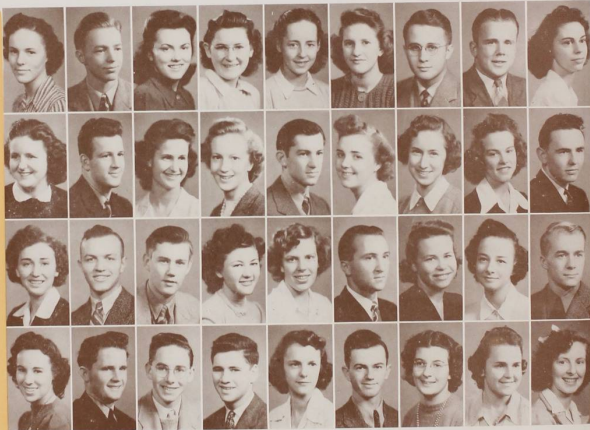
Anderson, D.
Blake, J.
Byrd
Diehm

Anderson, J.
Blake, J.
Cain
Doerr

Anderson, M.
Bolland
Cake
Doughton

Andretes
Bradshaw
Camp
Dosey

SOPHOMORES

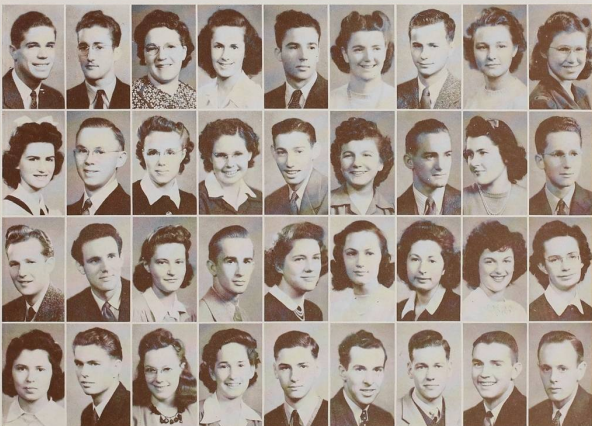


FIRST SEMESTER OFFICERS

<i>President</i>	- - - -	DAVE TESARIK
<i>Vice President</i>	- - - -	BETH NORDEAN
<i>Secretary</i>	- - - -	MARY BENNETT
<i>Treasurer</i>	- - - -	BOB FINDLEY
<i>Sergeant-at-Arms</i>	- - - -	BILL HANAUSKA
<i>Representative</i>	- - - -	LAWRENCE WILLS

The sophomore class added to its previous record by being first contributors to the Bearcat Cavern fund and by supplying organizers Betty Adkins and Jim Glasse for the WSSF drive. Other talented members were class prexy Tesarik, Irish tenor Carolan, Rook Bible editor Lois Butler and blue ribbon speaker Catharine Thomas.

<i>Drorbaugh</i> <i>Fox</i> <i>Glasse, Jim</i> <i>Hunt</i>	<i>Durland</i> <i>Fries</i> <i>Gollubur</i> <i>Johns</i>	<i>Eakin</i> <i>Fries</i> <i>Goodding</i> <i>Jones, A.</i>	<i>East</i> <i>Gabriel</i> <i>Habernicht</i> <i>Jones, D.</i>	<i>Estep</i> <i>Gardner</i> <i>Haight</i> <i>Jones, D.</i>	<i>Ferrin</i> <i>Gatch</i> <i>Harper</i> <i>Jones, T.</i>	<i>Findley</i> <i>Geddes</i> <i>Hathaaway</i> <i>Judd</i>	<i>Fisher</i> <i>Gibbons</i> <i>Holtzman</i> <i>Kelly</i>	<i>Porsythe</i> <i>Glasse, Jack</i> <i>Hoover</i> <i>Kunke</i>
---	---	---	--	---	--	--	--	---





RICH WICKS

Rich Wicks, sophomore president this spring, was a member of the Alpha Psi champion table tennis team and a member of the interfraternity council.

Laughlin
McKay, M. J.
Moore
Provost

Leslie
McKinlay
Mudd

Lewis
Macaulay
Nash
Purcell

Libby
Madsen
Nelson
Ratcliffe

Link
Massee
Nielsen
Reed

Loop
Maulding
Nordean
Reeves

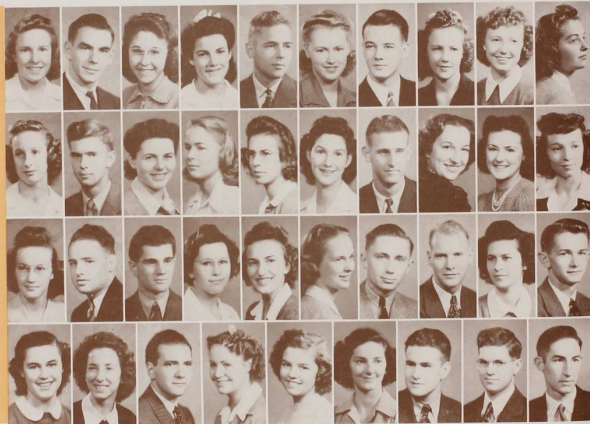
McCall
Merriott
Nowack
Robinson

McClelland
Myers
Olson, G.
Rose

McClendon
Morgan
Olson, P.
Ross

McKay, M.
Morton
Pentney
Roth

SENIOR PORTRAIT

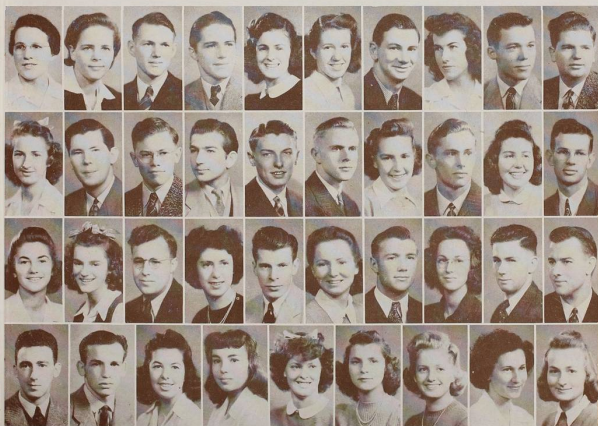


SECOND SEMESTER OFFICERS

<i>President</i>	- - -	RICHARD WICKS
<i>Vice President</i>	- - -	BETTY ANDREWS
<i>Secretary</i>	- - -	ROSELLA BELL
<i>Treasurer</i>	- - -	DAVE GEDDES
<i>Sergeant-at-Arms</i>	- -	BILL HABERNICHT
<i>Representative</i>	- -	LAWRENCE WILLS

Early in the second semester the class found fresh unity and pep under president Rich Wicks and spirited pianist Marion Crews. Sophomore women made their debut into upper class activities this year when six were elected to Mu Phi Epsilon, and when Martha Weaver directed the junior May Pole dance.

<i>Routson</i>	<i>Roland</i>	<i>Runyan</i>	<i>Russell</i>	<i>Savage</i>	<i>Selden</i>	<i>Sherwood</i>	<i>Shinkle</i>	<i>Simmons</i>	<i>Sloper</i>
<i>Smith</i>	<i>Southwick</i>	<i>Steeves</i>	<i>Steinbock</i>	<i>Strellman</i>	<i>Strickland</i>	<i>Stuyts</i>	<i>Sammars</i>	<i>Templeton</i>	<i>Tesarik</i>
<i>Thomas, C.</i>	<i>Thomas, H.</i>	<i>Tweed</i>	<i>Valiant</i>	<i>Walker</i>	<i>Weaver, M.</i>	<i>Weaver, R.</i>	<i>Wells</i>	<i>Wertz</i>	<i>Wicks</i>
<i>Williams</i>	<i>Wills</i>	<i>Wilson</i>	<i>Wing</i>		<i>Wolf</i>	<i>Wonderlick</i>	<i>Woods</i>	<i>Wristley</i>	<i>Young</i>



1945



ERENNER LUTHI

Brenner Luthi's hands proved equally capable at wielding the gavel for the freshman class last fall and at playing the piano.

Acton
Bates, D.
Blackman
Brown, K.
Christman

Bain
Bates, L. J.
Blake
Brunson
Cloudy

Bales
Batson
Bohannon
Carpenter
Cooke

Balkovic
Bellinger
Bowes
Carter, M.
Copenhaver

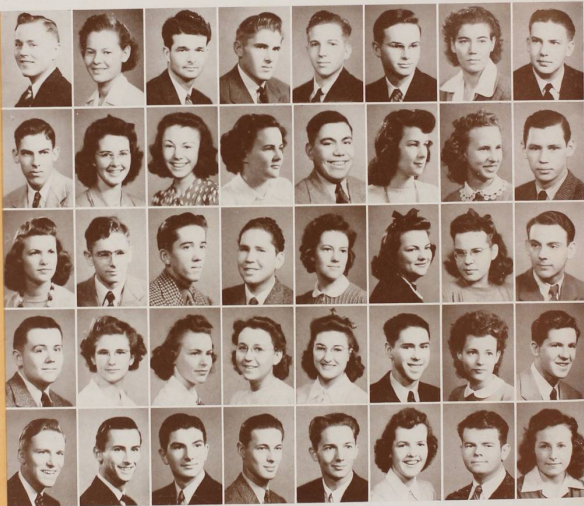
Barber
Bent
Boyce
Carter, P.
Cotton

Barnhart
Bentley
Broadwell
Case, R.
Craven

Bartholomew
Bergquist
Brock
Case, V.
Crowe

Batdorf
Bigler
Brown, R.
Cate
Currey

FRESHMEN



FIRST SEMESTER OFFICERS

President	-	-	-	-	BRENNER LUTHI
Secretary	-	-	-	-	JANE FINDLEY
Treasurer	-	-	-	-	REX HARDY
Sergeant-at-Arms	-	-	-	-	RAY LOTER
Representative	-	-	-	-	CHARLES CLOUDY

The surprisingly large class of '46, first freshman group enrolled during World War I, early evidenced their ingenuity by preceding the annual Homecoming leaf rake with a rousing serenade. Led by president Luthi, others bidding for recognition were Cooke, pianist; Foster, artist; and Wilma Froman, who pluckily endured a brain concussion.

Daugherty
Dowd
Fairham
Foster
Haight

Davey
Downs
Farmer
Froman
Halvorsen

Day
Eberly
Fatland
Gilson
Hanigan

Dickey
Eddy
Fedge
Gilstrap
Hanson

Dickson
Egan
Field
Griffiths
Hardy

Donovan
Erikson
Filbin
Grimm
Harris

Doughton
Eriwert
Findley
Grinde
Heilman

Douglas
Fairclo
Fisher
Hageman
Heinz





PAUL JAQUITH

Student minister Paul Jaquith shows ease and ability whether behind the pulpit or directing activities as second semester freshman prexy.

Helsby
Hoover
Hurley
Johnson, R.
Lathrop

Henderson
Hougendobler
Idso
Jones
Lee

Herd
Hovd
Irwin
Kauffman
Leigh

Herr
Huber
Jacobson
Kenney, D.
Lewis, D.

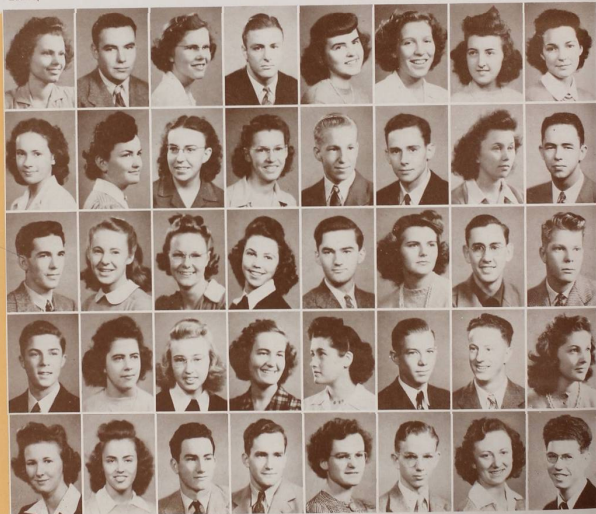
Hill
Huddleston
Jaquith
Kenney, P.
Lewis, L.

Hoar
Hughell
Jarnan
Klein
Lidtke

Hobbs
Hughlett
Johnson, C.
Kohle
Long

Hoffmaster
Hunter
Johnson, E.
Lamb
Loop

FRESHMEN



President - - - - PAUL JAQUITH
Vice President - - - - WILMA FROMAN
Secretary - - - - JANICE PATTERSON
Treasurer - - - - BILL EGAN
Sergeant-at-Arms - - - - JEANNE MILCH
Representative - - - - BILL COOKE

After their initial plunge into college life, the freshmen adopted a more serious pace second semester, especially evidenced by Alan (Gandhi) Voigt, straight A man; Mary Stapleton, pianist; Warren Down, cellist; and Chuck-of-all-trades Wicks. Twenty new accelerated students shared with the class the work (and swim) of the novel Glee.

Loter	Lovell	Low	Lunt	Luthi	McClain	McCollum	McGowan
McHill	MacMillan	Mack	Mehlhoff	Meier	Melson	Mitch	Miller
Monroe	Montandon	Moore	Morley	Morris	Moses	Neal, J.	Neal, P.
Nelson	Nickett	Nims	Noll	Oakes	Oeder	Oliver	Olsen
Orange	Patterson	Peetz	Penman	Porter	Priem	Ramage	Randall



1945



REID SHELTON

An ardent music lover and an all-around musician, Reid Shelton was his class' logical choice for freshman chairman of the 1943 Glee.

Ransom
Saxton
Smith, D.
Stoudenmeyer

Rath
Scheuerman
Smith, G.
Straumfjord

Richmond
Schlegel
Smith, N.
Strother

Ringland
Schwartz
Spangler
Stein

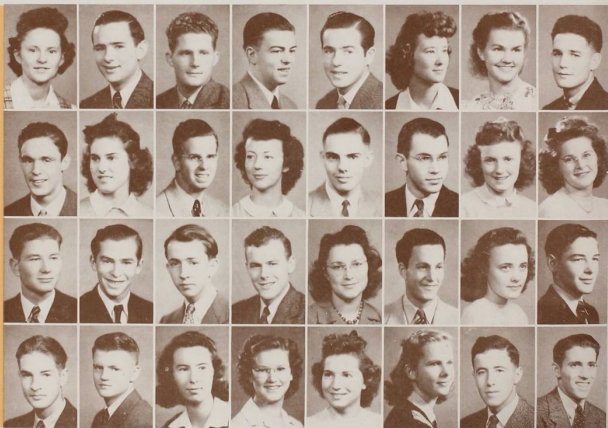
Ringle
Scott
Stahr
Swanson

Rock
Shelton
Stanley
Tallant

Rohrs
Shinn
Stapleton
Taylor

Ryan
Smith, C.
Storitz
Teeter

FRESHMEN



Gaiety, gremlins and glee typified Willamette's thirty-fifth annual song contest. Behind the scenes planning technicalities with Glee manager Reid Shelton was the general committee, Betty Sackett, Jean Jackson, Ray Short and Prof. Lestle J. Sparks. Despite world conditions, student enthusiasm caught the light-hearted spirit of the novelty theme and made the suspense almost unbearable, as Prof. Herman Clark ably delayed his presentation of the coveted banner.

Thomson
Wallin
Wicks
Winterscheid

Torbet
Watkins
Wiener
Wire

Tucker
Watts
Williams, T.
Wittliff

Ulbin
Webb-Bowen
Williams, V.
Wittzel

Uppjohn
Weir
Wilson, J.
Wunsch

Van Santen
Weist
Wilson, J. A.
Yeoman

Voigt
Wells
Winegar
Yocom

Wagner
White
Winkenuwerder
Zahradnik





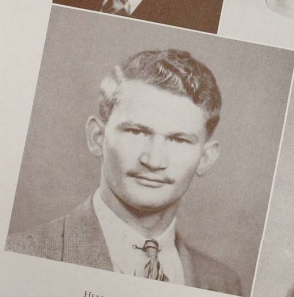
Women officers of the Law school at a study table in the law library. Caroline Duby, president; Charlotte Ellingsworth, secretary-treasurer; Louise Moore, social chairman.



LEGAL ACTION

Law School levis have given way to a variety of uniforms—army, navy, air corps and marines. Despite curtailed enrollment, noticeable lack of one-time noticeable social functions, absence of frosh and no Moot Court, remaining students and professors have successfully made every attempt to keep up the same old spirit.

Res Ipsa Loquitor. Yes, the thing still speaks for itself.



HERBERT CARTER
GEORGE CONSTABLE
PAUL LITTLE

SENIORS
JUNIORS
CAROLINE DURY

WILLIAM THOMAS
CHARLOTTE ELLINGSWORTH
LOUISE MOORE



Dr. and Mrs. Ivan Lovell and their son Michael enjoy student companionship made possible by the Faculty Fireside program. At the Lovell's that day were Louise Stuyts, Dr. Lovell, Opal Scheuerman, Mrs. Lovell, Margaret Pemberton, Marian Cake, Phil Orange and Michael.

FACULTY FIRESIDE

The genuine interest and friendly cooperation manifested by the members of the Willamette faculty in classroom and campus relations with University students can be no better illustrated than in the tradition of faculty firesides. Entertaining students in the informal atmosphere of their homes, professors offer to their guests the opportunity for a closer and more understanding relationship, a sincere desire for mutuality of thought displayed throughout their associations with the young men and women whose intellectual development and scholastic efforts they guide.

It is to such a characteristic that the students, who today enjoy the fruits of 100 years of progress at Willamette, owe a quality which makes of their collegiate careers more than a matter of textbooks and classrooms but the acquirement of a meaningful, practical and integrated body of knowledge adequately equipping them to cope with and master the fine art of living.

May we introduce the Smith family? There's Dr. Smith, Mrs. Smith, Sally and Margie Lou, and they live in University House on Winter street. They belong to Willamette university, Dr. Smith as its president, Mrs. Smith as the charming hostess of their home and the girls as spirited boosters and prospective students.



UNIVERSITY PRESIDENT

Dr. Smith came to Willamette with a broad smile and a friendly handshake, became the University's youngest president and won a place in its heart. For students, faculty and friends of the school alike Dr. G. Herbert Smith has become first a friend and then a president, always a leader, practical yet tolerant, efficient and wise, qualities which total a regime of the democratic sort, one which will prosper and blend with the history of Willamette.





Students find willing helpers, wise counselors and good friends in Olive M. Dahl, Dean of Women, and Daniel H. Schulze, Dean of Men.

With the appointment of Dean Luther as campus armed services representative, the army-navy training program became an integral part of the war-accelerated academic plans. Among outstanding professors who instructed capacity classes in the militarily important natural sciences was Prof. Brown, who at times handled two labs simultaneously.

CHESTER F. LUTHER
Ph.D.

Dean of the College of
Liberal Arts
Professor of Mathematics

EARL THEODORE BROWN
M.S.

Professor of Physics

W. W. HERMAN CLARK
A.M.

Associate Professor of
Physical Science

ALIDA GALE CURREY
A.M.

Associate Professor of
Physical Education

WILLAMETTE



OLIVE M. DAHL
A.M.
Dean of Women
Associate Professor of
German



FRANCES W. DOUGHTY
A.M.
Instructor of Mathematics
and Accounting



CONSTANCE FOWLER
M.F.A.
Assistant Professor
of Art



ROBERT M. GATRE
Ph.D.
Professor of Political Science
and History



OLIVE M. DAHL
A.M.
Dean of Women
Associate Professor of
German



FRANCES W. DOUGHTY
A.M.
Instructor of Mathematics
and Accounting

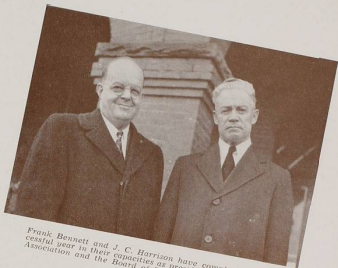


CONSTANCE FOWLER
M.F.A.
Assistant Professor
of Art



ROBERT M. GATRE
Ph.D.
Professor of Political Science
and History

Singularly affected by wartime conditions were Lorena Jack, who ran into shortage and ration difficulties in obtaining supplies for Lausanne Hall, "Spec" Keene, in charge of the stiff physical fitness program, and Dr. Hutchins, who turned from his almost deserted education department to aid in the science and sociology fields.



Frank Bennett and J. C. Harrison have completed a successful year in their capacities as presidents of the Alumni Association and the Board of Trustees.

JOEL W. C. HARPER
A.M.

*Professor of Economics and
Business Administration*

CHARLES C. HAWORTH
A.B.

*Instructor in
Spanish*

H. C. HUTCHINS
Ph.D.

*Professor of
Education*

LORENA N. JACK
M.Sc.

*Instructor in
Home Economics*



FACULTY

CHARLES H. JOHNSON
Ph.D.

*Professor of
Chemistry*

ROY S. KEENE
B.S.

*Director of Athletics
Professor of
Physical Education*

ELIZABETH KENNEDY
B.L.S.

*Assistant
Librarian*

HENRY C. KOHLER
Ph.D.

*Professor of
English Literature*



Sophomore Marge Maulding is well-qualified for her duties as secretary to Chester F. Luther, Dean of the College of Liberal Arts.

As campus pre-med adviser, Dr. Monk had a special wartime task in readying students for early entrance into medical schools. Students looking ahead to post-war problems filled Dr. Laughlin's sociology classes. The unique humor of Dr. Miller in social psychiatry and Dr. Lovell in history ranked their classes high in popularity.

ROBERT E. LANTZ
Ph.D.
*Assistant Professor
of Education*

LOIS E. LATIMER
A.M.
*Professor of
Home Economics*

SCENA BRIGHT LAUGHLIN
Ph.D.
*Professor of Sociology
and Anthropology*

REGINALD IVAN LOVELL
Ph.D.
*Professor of
History*

WILLAMETTE



KENNETH MCLEOD
Ph.D.
*Instructor in
Chemistry*



HORACE G. MILLER
M.D.
*Lecturer in
Social Psychiatry*



CECIL R. MONK
Ph.D.
*Assistant Professor of
Biology*



MARION MORANGE
A.M.
*Assistant Professor
of French*



Dean Schulze, heading student employment, this year saw jobs searching for workers as seriously busy students fell back on their summer defense work earnings. Drama and journalism became family matters with the Ringnaldas when he acted as ex-officio stage manager for Little Theater productions and Mrs. Ring aided publications.



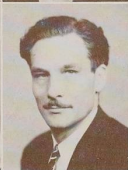
President G. Herbert Smith finds his secretary, Mrs. Maxine Lantz, efficient in handling all appointments and directing her staff of student assistants.

EGBERT S. OLIVER
Ph.D.
Associate Professor
of English

BERNICE ORWIG
A.B.
Instructor in
Biology

HELEN PEARCE
Ph.D.
Professor of
English

HERBERT E. RAHE
Ph.D.
Professor of
Speech



MARGARET B. RINGNALDA
A.M.
Dramatics Coach

MUELLO RINGNALDA
A.M.
Professor of
Journalism

DANIEL H. SCHULZE
Ph.D.
Dean of Men
Professor of Bible
and Religion

CHARLES L. SHERMAN
Ph.D., Ph.D.
Professor of Philosophy
and Psychology

FACULTY



Business secretary N. S. Savage handles finances in regard to tuition and endowments, while Lestle J. Sparks, graduate manager, supervises student body and athletic funds.

Despite a great drop in enrollment, the College of Law carried on this year under the guidance of Dean Smith. In sharp contrast, capacity enrollment was brought to the classes of Dr. Tschudy and Prof. Sparks by the emphasis on science and physical fitness of the army-navy training program.

LESTLE JESU SPARKS
A.M.
*Associate Professor
of Physical Education*

ROBINSON SPENCER
B.L.S.
Librarian

ROBERT H. TSCHUDY
Ph.D.
*Assistant Professor
of Biology*

ALEXANDER A. VAZAKAS
Ph.D.
*Professor of Modern
Languages and
Comparative Literature*

WILLARD



RAY L. SMITH
A.B., LL.B.
*Acting Dean of the College
of Law
Professor of Law*



DEAN ELLIS
LL.B.
*Instructor in
Taxation*



ROY M. LOCKINOOR
J.D.
Professor of Law



WILLARD WIRTZ
LL.B.
*Instructor in
Evidence*



Highlighting the College of Music's year were acceptance by the national accrediting association, which specially cited Dean Geist for his administration, and organization of a symphony orchestra by Prof. Pankaskie. Coming as a blow to the university was the mid-year death of Clara Eness, well-known for her piano artistry.



Mrs. Emily Stone, recorder, and Walt Erickson, director of admissions and Freshman Dean, have charge of scholastic records and registration of students.

MELVIN H. GEIST
M.M.
Dean of the
College of Music

MARY SCHULTZ DUNCAN
Instructor in Violin

CLARA ENESS
M.M.
Professor of
Piano and Theory

BENNETT R. LUDDEN
M.M.
Instructor in Piano



HELEN MACHIBBON
B.M.
Instructor in Piano
Organ and Theory



LEWIS PANKASKIE
M.M.
Instructor in Theory
and Instrumental Music



T. S. ROBERTS
Instructor in
Pipe Organ

FACULTY



It was fitting for Dr. James T. Matthews to award the Glee banner for he was as much a part of Willamette as is Freshman Glee itself.



In Memory

"Genuine charm is the visible and audible sign of inward spiritual graces—like patience, friendliness, tolerance, love."

These words from one of the popular chapel talks by Dr. James T. Matthews included in his autobiography, "Turn Right to Paradise," unwittingly delineate the charm of our own "Professor Matthews." Add the character of a gentleman and a scholar in their best sense and we face in our memory the lovable professor of mathematics who taught and lived with Willamette university for half of its golden century of existence.



Dr. Carl Sumner Knopf's burying of the ceramic in the Temple of Centuries is symbolic of the outlook on life which he implanted in student personalities.

The spirit that has pervaded a hundred and one years to hold past and present generations together in the living body that is Willamette university is a composite thing built of each of the lives that has touched it.

None more truly than Dr. Carl Sumner Knopf has contributed to Willamette's essence. President and friend, he belonged to us although through short acquaintance. To symbolize his belief in Willamette's past and his faith in its future, he left to this century old school a circle of sequoias, the Temple of Centuries.







LIVING GROUPS

ALPHA PHI ALPHA



FRESHMEN
Bain
Bates
Blackman
Brook
Carpenter
Carter
Curry

Froman
Grimm
Hanson
Harris
Herd
Hoar
Hoover

Huber
Jarnum
Kenney
Long
Loe
McCallum
McMillan

Neal
Nickel
Rock
Torbet
Tucker
Wagner
Walton

Weir
Wienert
Yocum
SOPHOMORES
Arnold
Bennett
Blake, Janet
Blake, Janrose

Carkin
Loop
Olson, P.
Provoost
Satage
Selden
JUNIORS
Bucurenci

Burgoine
Crawford
Gueffroy
SENIORS
Harnsberger
Matthes
Olson, O.

Simpson
Tate

Viesko
Kirk

OFFICERS
President
First Vice President
Second Vice President
Secretary
Manager

Olivia Olson
Ruth Burgoyne
Donna Belle Savage
Janet Blake
Helen Simpson



KAPPA GAMMA RHO

FRESHMEN
Acton
Barshart
Cale
Cooke
Eddy
Fedy
Grinde

Hunter
Jaquith
Loop
Luthi
Miller
Morris
Smith

Spangler
Stanley
Strawfjard
Teeter
Watkins
Winterscheid
SOPHOMORES
Carol

McKinlay
Olson
Rusjan
Southwick
Strellman
Tesarik
Tweed

Williams
Wittliff
JUNIORS
Adams
Albert
Blanding
Burton
Hatfield

Hobbs
Lee
Luthy
Opdahl
Perry
Short

White
SENIORS
Downs

Lieser
Simpson

OFFICERS

President - Bob Perry, Mark Hatfield
First Vice President - Mark Hatfield, Gene Olson
Second Vice President - Bob Lee, Dick Strellman
Member-at-large - David Tesarik, George Luthy
Work Manager - Herbert Simpson, George Cooke
Manager - Howard Blanding, Bill Cooke
Secretary - Bob Albert

FIRST SEMESTER SECOND SEMESTER



BETA CHI

FRESHMEN
Bellinger
Bentley
Craven
Hill
Jacobson
Lamb
Mehlhoff

Meier
Oakes
Ramage
Shian
Tallant
Webb-Owen
SOPHOMORES
Andrews

Bell
Butler
Cutler
Doerr
East
Fox
Gibbons

Harper
Holtzman
Jones
Laughlin
McKay, M.
McKay, M. J.
Madsen

Maulding
Nordean, Beth
Shinkle
Smith
Wing
Woods
JUNIORS
Finney

Hadley
Huston
Johnson
Koschmider
Owen
Phillips
Rynn
Schramm

Sherman
Spears
Stricklin
Tracy

SENIORS
Caufield
Gladden
Jensen
McIntyre

Nordean, Bev
Seacat

Short
Davidson

OFFICERS

President	- - -	Lois Gladden
Vice President	- - -	Miriam Jensen
Secretary	- - -	Patricia Short
Corresponding-Secretary	- - -	Jean Sherman
	- - -	Rosella Bell
Treasurer	- - -	Mary Jean Huston
Manager	- - -	Susanna Schramm
Sergeant-at-Arms	- - -	Beryl Seacat



SIGMA TAU

FRESHMEN
Bardorj
Copenhaver
Doughton
Ewert
Fairham
Fatland

Filbin
Finney
Gilson
Griffiths
Halvorsen
Hardy

Hurley
Johnson
Luter
Lunt
McClain
McGowan

Melson
Olson
Schlegel
Shelton
Sloner
Storitz

Taylor
Ullrich
Williams
Yeoman
SOPHOMORES
Adams, D.
Anderson

Byrd
Friedley
Geddes
Glasse, Jack
Glasse, Jim
Habernicht
Jones

Kunkle
Ratcliffe
Rose
Steeves
Summers
Wills
JUNIORS
Harrold

SENIORS
Adams, H.
Blodgett

Davidson
Martin
Nesbitt
(Missing)

OFFICERS

President
First Vice President
Second Vice President
Secretary
Manager
Member-at-large

John Martin
Bob Ratcliffe
Gordon Kunkle
Jack Glasse
Bill Nesbitt
Jim Glasse



DELTA PHI

FRESHMEN

Case
Davy
Day
Dickson, B.
Eberly
Farmer
Findley, J.
Haight, P.

Hobbs
Hoffmaster
Houpendobler
Hughlett
Irwin
Jones
Kaufman
Lathrop

Lee
Mack
Nelson
Nims
Yall
Patterson
Pietz
Penman

Randall
Scheuermann
Schwartz
Stapietow
Strother
Uppjohn
SOPHOMORES

Bolland
Burkhart
Ferrin
Fries
Haight, J.
Hunt
McClelland
McClendon
Macnaley
Morgan

Moze
Nielsen
Struts
Thomas
Valliant
Vonderlick
Wilson
Wrisley
Young

JUNIORS

Burd
Carlson
Cooper
Dickson, D.
Estes
Ewing
Findley, E.
Fry
Kells

Mason
Pierstorff
Sechrist
Sipes
Swanson
Todd
Zimmerman
SENIORS

Frederickson
Fretz
Lindstrom
Matthews

Sackett
James

OFFICERS

President	-	-	-	Betty Sackett
First Vice President	-	-	-	Eleanor Todd
Second Vice President	-	-	-	Darlene Dickson
Secretary	-	-	-	Muriel Lindstrom
Corresponding Secretary	-	-	-	Eloise Findley
Managers	-	-	-	Elvy Fredrickson, June Haight



ALPHA PSI DELTA

FRESHMEN

Balkovic
Bahannon
Case, R.
Cloudy
Cotton
Donovan
Egan

Herr
Huddleston
Kahle
Leigh
May
McHill
Moore

Oeder
Orange
Priem
Rath
Smith
Thompson
Watts

SOPHOMORES

Bradshaw
Burnet
Chusid
Drorbaugh
Estep
Gardner
Kelly

Leslie
Link
Merriott
Neal
Sherwood
Simmons
Strickfaden
Weaver

JUNIORS

Barnick
Case, A.
Demer
Demeter
Edis
Huston
Kister

Macy
Oliver
Schand
Sparrow
Torgeson
SENIORS
Faminow
Herrick
McAbee

Miller
Olson

Palmer
Stacer

OFFICERS

FIRST SEMESTER SECOND SEMESTER

President - - Peter Faminow, Dick Stacer
First Vice President - Wallace Olson, Merle Palmer
Second Vice President - Ben Schaad, Don Link
Manager - - Richard Wicks
PledgeMASTER - - Dick Stacer, Kenneth Torgeson
Member-at-large - - John Macy, Jay Oliver



LAUSANNE HALL

... and in this corner the telephone, bulletin board and mail box. Jane Findley on the phone and Alice Libby with the package.



Lausanne women relax after dinner by going to the parlor and listening to Barbara Dieffendorf play the piano and sing.





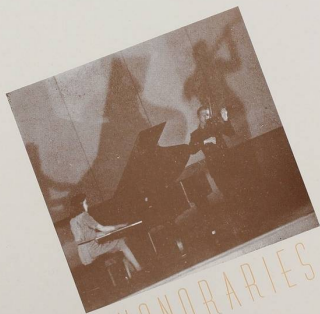
Another memory of dorm life is the Christmas party. Santa Claus Hopper distributed the presents this year.

Among memories of life at Lausanne will be "Serenade in Blue" and "The Ballet," formal birthday dinners and after-dinner dancing, stair-step conferences and midnight parties, Vicky Jones' poison oak and Wilma Froman's concussion, and singing "Miss Jack, get under the table."

Living at Lausanne means exchanging clothes and confidences. It means a freshman seeking advice from a senior. It means a squeal of delight when a corsage comes. It means sitting up the night before a test. It means sharing with others your food and your fun—and your friendship.



The stairs serve as a convenient place to talk over problems of dormitory life with Harriett Monroe and Reeve Schmidt, first and second semester presidents.



HONORARIES



Cookie Jar is an important Vespers activity. Front row: Pemberton, Mason, Libby, Monroe, Brunson, Herd, Routson, Acheson. Second row: Wrisley, Wilson, Lewis, Nelson, Huston, Taylor.

OFFICERS

President - - - MARGARET PEMBERTON
 Vice President - - - REEVA SCHMIDT
 Secretary - - - ETHEL JEAN CAIN
 Treasurer - - - PAUL LIBBY, SAM WITZEL

University Vespers serves Willamette students by carrying out the theme "For the Living of These Days" in offering inspiration and personal guidance, and fun and fellowship for the building of Christian lives.

During a year in Vespers, the Sunday evening worship services and talks by outstanding Christian leaders, folk-dancing parties, musical programs, and the weekly get-togethers at Cookie Jar all become a part of real living on the campus.

VESPER S



First row: Schaad, Cameron, Fralola, Hanauska, Barnick. Second row: Donovan, Olson, White, Runyan, Ackley, Ogdahl. Third row: Ercolini, Kunke, Copenhaver.

OFFICERS

President - - - - - TED OGDahl
Vice President - - - - - JOHN MACY
Social Chairman - - - - - EARL TOOLSON
Treasurer - - - - - GEORGE CONSTABLE

Functioning once again in its usual capacity as the MP of the campus, the "W" club was instrumental in keeping a surprisingly docile freshman class from infractions of the Rook Rules and in maintaining order in Kangaroo Kourt under the jurisdiction of Judges Constable, Hanauska and Miller, and bailiff Toolson.

The men were among the leaders of the campus clean-up in early March, putting Willamette in order from Sweetland's track to Eaton's attic.



LITTLE THEATER

Hathaway, Fuminow and Dickson check script while Gollhur, Stahr, Steinbock, Bain, Hopper and Myers enact a scene from "Arsenic and Old Lace." Mrs. Ringnalda directs, Steinbock is president.

Behind the scene efficiency describes the Little Theater group, who work on stage settings for major dramatic productions and on building permanent properties for the drama department. Drama students who like painting, prop building and general hard work are eligible.

A national dramatic honorary fraternity, Theta Alpha Phi sponsors the Homecoming play and various other dramatic productions throughout the year. Students actively interested in the drama who have participated in at least five plays are eligible for membership.

Theta Alpha Phi members are Gollhur, Dickson, Myers, Hathaway, Ringnalda (adviser), Steinbock, Faminou, Hopper, Lois Phillips, not shown, is president.

THETA ALPHA PHI





In cooperation with the YW, the Willamette YMCA sponsored the campus drive for funds for the World Student Service Fund, planned the YM-YW formal reception during freshman week, and arranged for Faculty Fireside chats at the homes of the professors.

The YM cabinet. Seated: Fanger, Erickson (adviser), Glasse, Cotton. Standing: Crews, Stacer, Miles, Durland, Judd, Wicks and Tasker, first and second semester presidents.

The YW cabinet. Front row: Leonard, Adkins, Short, Ibach. Seated: Brown, Keene, Dahl, Wallace (advisers), Macauley, President Matthes, Weaver. Last row: Bates, Thomas, Payne, Mason, Ferrin.

In addition to its usual program of assisting the Willamette coed in adjusting to college life, the YW sought to aid women in coping with problems of war by presenting timely discussions dealing with woman's place in the war effort.





Senior women in Cap and Gown.
Front row: Fretz, Fredrickson.
Second row: Jensen, President
Jackson, Sackett.

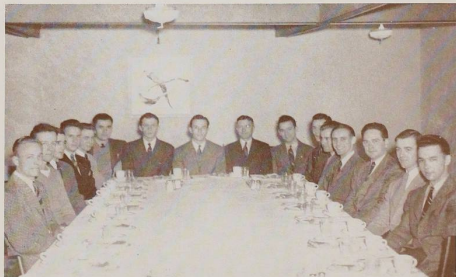
CAP AND GOWN

Outstanding service, scholarship, personality and Christian character are the basis for selection to membership in Cap and Gown. The group met bi-monthly for luncheon at Lausanne, honored scholastically high sophomores at a dinner, and co-edited the "Here's How" column in *The Collegian*.

Beginning the year with its ranks depleted by service calls, Blue Key was reorganized by the two remaining members, Dick Stacer and Bob Hamilton, to include its normal complement of fifteen junior and senior men outstanding in scholarship, character and service.

Blue Key men: Downs, Adams, Ogdahl, Taylor, Moser, Faminow, Hamilton, President Stacer, Schulze (adviser), Keith Markee, Martin, Nesbitt, Palmer, Herrick, Schaad, Kent Markee.

BLUE KEY



MU PHI EPSILON



Mu Phi Epsilon became increasingly active on the campus this year by enlarging its membership. Members sponsored a fall faculty concert for the benefit of Chinese relief. Proceeds from their spring student concert went to the Clara Eness Loan Fund for music students.

Mu Phi Epsilon musicians. Seated: Fry, Livenessy, Carkein. Standing: MacHirron, Crawford, Bucurench, Wrisley, President Jackson, Thompson, Mozee, Massee, Brown.

INTERNATIONAL RELATIONS

FIRST SEMESTER OFFICERS

President - - - - RICHARD WICKS
Vice President - - - - PETER FAMINOW
Secretary - - - - BETTY SACKETT

SECOND SEMESTER OFFICERS

President - - - - PETER FAMINOW
Vice President - - - - DAVID TEETER
Secretary - - - - OPAL SCHEUERMAN

Problems of the post-war world and reconstruction were the principal topics of the bi-monthly discussions of the campus International Relations club. Their most heated debates were between Rich Wicks and Peter Faminow on "Union with Britain Now" and between Dave Teeter and Don Ackley on the problem of India.



*Physical Education Majors.
Seated: President Schaad, Routson, T. J. Currey, Schmidt, Mudd, Lewis. Standing: G. Currey (adviser), Gueffrou, Toolson, Bartholomew, Graham, Keene (adviser), Bennett, Runyan, Macy, Wills.*

Physical Education majors able to complete school were concerned mainly with the conduct of freshman and sophomore gym periods and pre-navy conditioning programs. Calisthenics and sport activities were planned to build stamina and provide recreational team games.

PHYSICAL EDUCATION

TAU KAPPA ALPHA

Since its founding in 1926, the Willamette chapter of Tau Kappa Alpha, national speech honorary, has continually worked toward the achievement of forensic excellence among students participating in speech activities. The annual high school speech tournament held on the campus has been among the major events undertaken each year by the organization.

OFFICERS

<i>President</i>	- -	DARLENE DICKSON
<i>Vice President</i>	- - -	HAL ADAMS
<i>Treasurer</i>	- - -	DR. H. E. RAHE
<i>Secretary</i>	- -	CATHERINE THOMAS

APPRECIATION OF OUR ADVERTISERS



The following merchants are continually contributing to our school publications, and are therefore deserving of our appreciation and patronage. Without the support of these men it would have been impossible to produce a book of this size. With this fact in mind, we are grateful to our advertisers and urge that you give them your support.

Ralph Schlesinger

Publications Manager



make a little go far—
**HELP FEED OUR MEN
FIGHTING THIS WAR!**

There's no need for anyone in
America to go hungry—because
this is a bountiful nation. But we
all should take in our belts a
notch, so that not only we—but
our fighting forces and our gal-
lant allies will have enough to
eat. Learn to stretch the foods you
buy—and don't waste a crumb!



*Always a
Choice
Selection*

FLOWERS

"FROSTY" OLSON

Court and High Street
Telephone 7166

THE SPORTSMAN'S STORE CLIFF PARKER

Sporting Goods



"TENSIONED-AWLESS"
RACKET RESTRINGING

- Guns . . .
- Ammunition . . .
- Fishing Tackle . . .
- Athletic Goods . . .

JOHNSON OUTBOARD MOTORS

372 State Street, Salem

Phone 6042



Our armed forces are
GIVING their Lives . . .
We're only LENDING
our money.

BUY MORE WAR BONDS & STAMPS

Meier & Frank Co.



BERTELSON & SON

The Name to Know in

Printing

PHONE 7109

294 Chemeketa

SALEM, OREGON



ENGRAVINGS *By*
Salem Engraving Co.

SALEM, OREGON

BLOCH'S

Golden Rule Store

for

Your Shoes, Skirts, Sweaters, Trousers

A YOUNG MEN'S AND WOMEN'S

Student Store

Capital Business College

- BOOKKEEPING
- BOOKKEEPING MACHINES
- CALCULATING MACHINES
- STENOGRAPHIC
- SECRETARIAL COURSES

Special Subjects or Full Courses

SALEM, OREGON

Nelson Building

Phone 5987

381 Chemeketa St.

The Best Place
To Buy the Best

Candy

*You See It Made . . .
You Know It's Fresh!*

Gay's



135 North High Street

HARTMAN BROS.

JEWELERS



Corner State and Liberty

Furniture of Distinction

Drapery

China

Stoves

Curtains

Gifts

Refrigerators

A LITTLE DOWN ON A BIG BILL

The Gevurtz Furniture Co.

275 N. Liberty Street

Salem, Ore.

Phone 4615

Exclusive Ready-to-Wear

THE PRICE SHOE CO.

135 N. Liberty Street

BROWN'S



184 North Liberty Street - Telephone 4129

Salem, Oregon



1943 WALLULAH

Printed By

Statesman Publishing Co.

SALEM, OREGON

The Golden Pheasant



Fine Foods

Sensibly Priced

Two Forty Eight North Liberty

NEEDHAM'S BOOK STORE

For Your Student Needs

We Have All of Them

456 State Street

Shop The

Metropolitan Store

"The Store of Better Values"

- School Supplies
- Ready-to-Wear
- Toiletries
- Housewares
- Sewing Needs
- Giftwares

IN SALEM

At 136-146 No. Commercial Street

Kuhn's Shoe Repairing and Hat Service

"We Rebuild 'Em"

464 Court Street

Phone 9576

Salem Laundry Company



The Home of
GOOD LAUNDERING
and
DRY CLEANING

**WEIDER'S SALEM
LAUNDRY COMPANY**

Phone 9125

263 South High



Flowers

Always the Latest and Best . . .

BREITHAUPT'S, *FLORIST*

Telephone 9195

Say (Brite-Hop)

447 Court Street



Quisenberry's
Central Pharmacy

Guardian Building
410 State Street

KAY'S COAT AND
DRESS SHOP

Late Fashions

Individually Selected
Popular Prices

460 State Street

Salem, Oregon

VALLEY
MOTOR
COMPANY

SALEM, OREGON

FORD
V-8

SALES - - - SERVICE

The New Home
of the
Capital City Laundry
and Dry Cleaning

"The Best in the West"



Compliments of
Sears One=Stop Shopping
Center

The Friendly Place to Shop
Willamette Boosters Always

484 State Street

Salem, Oregon





Time to Spring Out in
NEW CLOTHES
From BISHOP'S

All "Wise Birds"

choose the

**STYLE CENTER
FOR YOUNG
MEN**

*The One Place to Find the Smartest
Styles First*

QUALITY

BISHOP'S

VALUES

The Chadwick Operated Hotels

W. W. CHADWICK, President

HOTEL SENATOR

SALEM, OREGON

HOTEL OREGON

EUGENE, OREGON

W. A. Cummings, Manager

REDWOODS HOTEL

GRANTS PASS, OREGON

Macklin Robinson, Manager

HOTEL JACKSON

MEDFORD, OREGON

Cedric Reamey, Manager

HOTEL MARION

Commercial and Ferry Street, Salem

GILBERT O. MADISON, Manager

- Special weekly rates given on application.
- Rooms for meetings, banquets and dancing.
- Remodeled, new furniture and equipment added.
- Modern Coffee Shop, open 6 a.m. to 9 p.m.
- Delicious food at moderate prices.
- Dining service for special luncheons, dinners and dances.
- Headquarters for service clubs, conventions.



The New

BLUE BIRD

Restaurant

For Grads and Undergrads!

BOSLER ELECTRIC

- *Electrical Installations*
- *Motor Sales and Repairs*

236 STATE

TELEPHONE 7822



STOP...!

Buy A War Bond
TODAY!

Merrill D. Ohling

INSURANCE

275 State Street

Phone 9494

**Pade's
Grocery and Market**

DELIVERY SERVICE

1244 State Street

PHONE 9135

Congratulations

Class of '43

MASTER
ENGRAVERS

Portland, Oregon

LEON'S

Beautiful Shoes



234 No. Liberty

SALEM, ORE.

Willamette University

SALEM, OREGON

Entering the One Hundred-First Year

"The Oldest College in the West"

MUSIC - LIBERAL ARTS - LAW

Fully Accredited

Approved by

Association of American Universities
National Association of Schools of Music
American Bar Association

Willamette's war time program provides specific training to meet the immediate needs of the country. In addition the University is continuing the traditional broad cultural education which has characterized the university for a century.

Willamette takes pride in being selected as the site for the Naval training school in the Naval College Program in the basic science and premedical curriculums.





BANKERS TO WILLAMETTE

For three generations it has been the honor of this institution to serve as "Banking Headquarters" to the Students of Willamette.

May we extend that
service to you,
personally?

Ladd & Bush - Salem Branch
of the
United States National Bank
of Portland

MEMBER F. D. I. C.

Points on processed foods are the same value in all stores, but Prices are lower at IGA Stores.

Remember, too, that IGA and Elsinore Brands are the finest quality—always.



Willamette Grocery Co.

Wholesale Grocers

SALEM, OREGON

Meet your friends at

*Montgomery
Ward*

155 N. Liberty Street
Phone 3194
SALEM, OREGON



Lunches



Dinner

*Private
Rooms*



*for
Banquets
and
Parties*

FOUNTAIN

440 State Street

Phone 5016

PUBLISHERS OF DISTINCTIVE ANNUALS

Seven Greater "Oreganas"

1942 Linfield "Oak Leaves"

1943 Wallulah



CREATIVE PRINTERS & LITHOGRAPHERS

Come to Us for Beauty and Originality

We Are Proud to Be Artists in the Graphic Arts

BUSHONG + CO.

323 S. W. Park Ave.

Portland, Oregon

ATwater 7313

Make The YMCA *Your Home*

While You Are at Willamette U.

- 45 MODERN ROOMS
- CLOSE TO THE CAMPUS
- "THE UNIVERSITY MEN'S DORM"
- SWIMMING
- BASKETBALL
- HANDBALL
- VOLLEYBALL
- BOXING
- WRESTLING



State Street Grocery and Market

Fresh Fruits and Vegetables

Fancy and Staple Groceries

Quality Meats

1230 State Street

Telephone 9127

Willet's Capital Drug Store

A Friendly Store



Corner State and Liberty Streets

Model Food Market

EDWARD SCHUNKE
Manager Grocery Dept.

W. F. PERLICH
Manager Meat Dept.

- *Free Delivery and*
- *Monthly Account Service*

THREE TRUNK LINES

Telephone 4111 Salem, Oregon 275 N. High Street

Do You Have EYE Trouble?

If there is any probability that your eyes are not in the best of condition, see us today.



Morris Optical Co.

444 STATE STREET

SALEM, OREGON
Also Offices in Silverton and Eugene

Typewriters

All Makes

- Corona Portable
- Remington Portable
- Royal Portable
- Underwood Portable



Rent - Swap - Repair

Roen Typewriter Exchange

Phone 6773

456 State Street



ALLAN L. STEVENS

*Salem's
Jewelry
Headquarters*

STEVENS & SON

Credit Jewelers

New Location

339 COURT

Near
Commercial

*Congratulations to the
Class of '43*

BEST BUY
IS TO
BUY BONDS



The J. K. GILL Co.

sw fifth avenue at stark
portland, oregon

Penney's

*"You Can't Buy More Till
We've Won the War"
Applies to Many Things*

Particularly, of course, to such things as Automobiles, Vacuum Cleaners, Refrigerators . . . we can't build those, AND planes, and tanks. So take care of what you have now!

In fact, everything you have must be taken care of. The less you have to buy, the more there'll be for victory. But what you MUST buy, should be bought from those you know and trust. For forty years, Penney's has been regarded by millions, as Thrift and Savings headquarters.



- *We are grateful to the following business men who have aided in making this book a more attractive issue than would have been possible without their sponsorship.*

- PHYSICIANS AND SURGEONS—

Drs. Morse, Power*, Buren*, Miller*, Lancetfield,
and King
Drs. Thompson, Lebold, Fortmiller

- EYES, EAR, NOSE, AND THROAT—

Drs. Findley, Clement, Baum*, Thompson and
Dunham*

- DENTISTS—

Drs. Kinley K. Adams
Drs. Blatchford, Blatchford, and Lewis
Drs. F. D. Voigt

* Men in the service.

Let your eyes have the benefit of the best that modern optical science has developed for them.

Willamette's Official Jewelers

379 STATE ST.

See the
Diamond

★ Diamond ★

★ Ring ★

of

Romance

★ ★ ★

* * *

BAKED IN SALEM BY CHERRY CITY
BAKING COMPANY

The First National Bank

of Portland

Salem Branch

The Oldest National Bank
West of the Rocky Mountains



The Moderne

We feature Wiscraft . . .
Greeting Cards of Distinction

Your Favorite Gift Store

Court and Commercial

Phone 3808

The Man's Shop

Moxley & Huntington



*The Store of Style, Quality and
Value for the University Man.*

416 State Street

Salem, Oregon

Scellars & Foley, Inc.

General Insurance Agency

The Premium Won't Break You
. . . A Loss Might!

143 South Liberty Street

Phone 6001

SALEM, OREGON



S & N CLOTHIERS

Clothes for Men and Young Men

At Popular Prices

456 STATE STREET



"For Vital Energy"

920 South Commercial Street

Phone 8101

Good Food at Reasonable Prices

THE GRILL

"The Biggest Little Place in Town"

Our Motto: Service, Quality, Cleanliness

PHONE 9014

Opposite City Hall - 264 North High Street

SENIOR ACTIVITIES

ADAMS, HAROLD W.

Silverton, Oregon
Major—Political Science—Senior Scholar
Sigma Tau

Senior Class Treasurer, Blue Key, Tau Kappa Alpha, Debate, Forensics Manager, Dramatics, A Cappella Choir, International Relations Club, Four Year Debate Award.

BARBER, MARTIN STEWART

Salem, Oregon
Major—Sociology, Psychology

BATES, DAWN LORRAINE

Salem, Oregon
Major—Religion
YWCA Cabinet.

BRIGGS, BEULAH FRANCES

Great Falls, Montana
Major—Political Science
Beta Chi House Manager
Collegian Reporter, Junior Class Secretary, YWCA, Vespers, International Relations Club Secretary.

CALDERWOOD, DOROTHY JEAN

Portland, Oregon
Transfer, St. Helen's Hall Junior college
Major—Sociology.

CAUFIELD, SHIRLEY ELIZABETH

Oregon City, Oregon
Major—Sociology
Beta Chi
Collegian Reporter, Wallulah Staff, A Cappella Choir, YWCA, Paint Spots.

DAVIDSON, OREL

Portland, Oregon
Major—Political Science
Sigma Tau
Forensics, Dramatics, YMCA, Little Theater, International Relations Club, Intramural Sports.

DOWNS, EDWARD HUME

Salem, Oregon
Major—Zoology—Senior Scholar
Kappa Gamma Rho
ASWU Second Vice President, Blue Key, Band, Orchestra, W Club, Tennis Awards.

FAMINOW, PETER SAMUEL

Lundbreck, Alberta
Major—Philosophy, Psychology
Alpha Psi Delta President, Vice-President
Freshman Class Treasurer, Senior Class President, Theta Alpha Phi Vice President, Little Theatre, International Relations Club President, Library Committee, Instructor in Russian.

FREDRICKSON, ELVY LENNEA

Portland, Oregon
Major—Mathematics—Senior Scholar
Delta Phi Social Treasurer, Manager
Mathematics Club Secretary-Treasurer, A Cappella Choir, Cap and Gown Financial Secretary, Undergraduate Mathematics Assistant.

FRETZ, ZOE CAMPBELL

Portland, Oregon
Major—Economics, Business Administration—Senior Scholar
Delta Phi
Cap and Gown, WAA Secretary, Lausanne Hall Social Chairman.

GLADDEN, LOIS VIRGINIA

White Salmon, Washington
Major—Sociology—Senior Scholar
Beta Chi President
A Cappella Choir, Band, Vespers, Intersorority Council Treasurer, Library Committee.

GRABER, JEANNETTE LOIS

Salem, Oregon
Major—History
Collegian Reporter.

HAMILTON, ROBERT HUGH

Shelton, Washington
Major—Political Science—Senior Scholar
ASWU President, Junior Class President, Blue Key, Who's Who Among Students in American Colleges and Universities, YMCA, Vespers, Chairman Centennial Committee, Swimming Instructor.

HARNSBERGER, GLENNERVA

Independence, Oregon
Major—Physical Education
Alpha Phi Alpha
YWCA Social Chairman, Collegian Reporter, Wallulah Staff.

HERRICK, FRANKLIN WILLARD

Major—Chemistry
Alpha Psi Delta
Senior Class President, Junior Class Treasurer, Vespers Art Chairman.

HOLM, ELIZABETH JEAN

Naselle, Washington
Major—Economics, Business Administration
YWCA, Vespers.

HOPFER, EDNAMAEE

Portland, Oregon
Transfer, Oregon State College
Major—Sociology
Senior Class Vice President, Theta Alpha Phi, Little Theater Vice President, Lausanne Hall Social Chairman.

JACKSON, JEAN IRENE

Astoria, Oregon
Major—Public School Music
Beta Chi
Senior Class Secretary, Cap and Gown President, Mu Phi Epsilon President, A Cappella Choir, Orchestra, YWCA, Vespers, WAA, Lausanne Hall Song Leader, Constitutional Revision Committee, Freshman Glee Executive Committee.

JENSEN, MIRIAM ANNE

Hood River, Oregon
Major—English—Senior Scholar
Beta Chi Corresponding Secretary, Work Chairman, Vice President, Yearbook Editor
Collegian Reporter, Feature Editor; Wallulah Senior Section Editor, Junior Class Vice President, Cap and Gown, Dramatics, YWCA, Vespers, Little Theater, Paint Spots, Honor Code Committee, Intersorority Council, Fusers' Guide Editor, Who's Who Among Students in American Colleges and Universities.

LEHMAN, REBA FISHER

Portland, Oregon
Major—Music
Senior Class Secretary, Vespers, Band, Orchestra, Dramatics.

LEONARD, FLORA ELLEN

Canby, Oregon
Transfer, Sacred Monica Junior College
Major—English
YWCA Cabinet, WAA, Archery Manager, Delta Tau Gamma.

LIESER, FREDRICK GILBERT

Seattle, Washington
Major—Social Science, Journalism—Senior Scholar
Kappa Gamma Rho
Collegian Sports Editor, Columnist; YMCA, Tennis Team, Golf, Publicity Director of Athletics.

LINDSTROM, MURIEL ELIZABETH

Salem, Oregon
Major—Economics, Senior Scholar
Delta Phi Secretary
Junior Class Secretary.

McABEE, HAROLD V.

Phoenix, Oregon
Major—History
Alpha Psi Delta
W Club, International Relations Club.

McCULLOUGH, HELEN LESLIE

Twisp, Washington
Major—Biology
Transfer, Deaconess School of Nursing.

MARTIN, JOHN EDWARD

Kelso, Washington
Major—Political Science
Sigma Tau President
Freshman Class Representative, Blue Key, Library Committee, Freshman Glee General Chairman 1940.

SENIOR ACTIVITIES

MATTHES, WILMA AUGUSTA

Salem, Oregon
Major—Sociology
Alpha Phi Alpha
Collegian, Wallulah, YWCA Publicity
Chairman, Secretary, President; Little
Theater.

MATTHEWS, RUTH ELAINE

Portland, Oregon
Major—English—Senior Scholar
Delta Phi
Junior Class Vice President, Dramatics, Theta Alpha Phi, Collegian Reporter, Copy Editor, Feature Editor; Wallulah Staff, Who's Who in American Colleges and Universities.

MAYER, LOIS MILDRED

Yankton, South Dakota
Transfer, Dakota Wesleyan University
Major—Home Economics.

MILLER, ERVIN EDWARD

Salem, Oregon
Major—Business Administration
Alpha Psi Delta
W Club.

MONROE, HARRIETT ELIZABETH

Parkdale, Oregon
Major—Sociology
Collegian Reporter, Wallulah Staff, Senior Class Vice President, YWCA Cabinet, Vespers Deputations Chairman, Willamette Methodist Student Council President; Lausanne Hall Secretary-Treasurer, Vice President, President; Delegate to National Methodist Student Conference at Urbana, Ill., Who's Who Among Students in American Colleges and Universities, May Queen.

NESBITT, WILLIAM HENRY

Dillard, Oregon
Major—History
Sigma Tau Secretary, Manager
A Cappella Choir, Intramural Sports, Interfraternity Council, Blue Key.

NORDEAN, BEVERLY MARIE

Baker, Oregon
Transfer, St. Helen's Hall Junior College
Major—English—Senior Scholar in Education
Beta Chi

OLSON, SARAH OLIVIA

North Bend, Oregon
Major—General Science—Senior Scholar in Education
Alpha Phi Alpha Secretary, President
Collegian, Band President, YWCA, WAA, Intersorority Council President, May Princess.

OLSON, J. WALLACE

Tillamook, Oregon
Major—History
Alpha Psi Delta Vice President
Intramural Athletics Manager, Collegian Sports Editor, Wallulah Sports Editor, W Club, Football, Basketball, Softball, Assistant Athletics Publicity Director.

PALMER, R. MERLE

Tacoma, Washington
Transfer, Pacific Lutheran College
Major—History
Alpha Psi Delta Vice President
Collegian Reporter, Wallulah Sports Co-Editor, Senior Class Treasurer, Blue Key Corresponding Secretary.

SACKETT, HARRIETT ELIZABETH

Sheridan, Oregon
Major—Home Economics—Senior Scholar
Delta Phi Work Manager, President
Cap and Gown Treasurer, YWCA, Vespers, International Relations Club Secretary, General Freshman Glee Committee, Intersorority Council.

SCHLESINGER, RALPH DANIEL

Salem, Oregon
Major—Business Administration
ASWU Publications Manager, Theta Alpha Phi, Student Union Board, Who's Who Among Students in American Colleges and Universities.

SCHMIDT, REEVA JEAN

Pendleton, Oregon
Major—Physical Education—Senior Scholar
Collegian Staff, Wallulah Staff, Orchestra, Vespers Art Chairman, Social Chairman, WAA President, Lausanne Hall President.

SEACAT, BERYL MARIE

Alexandria, South Dakota
Transfer, University of South Dakota
Major—Chemistry, Biology
Beta Chi
A Cappella Choir.

SIEGMUND, MARGARET

Salem, Oregon
Major—Business Administration
Beta Chi Secretary
A Cappella Choir, YWCA.

SHORT, PATRICIA JEAN

Medford, Oregon
Major—History
Beta Chi Secretary
Band, YWCA Firesides Chairman, Vice President, WAA, Recreational Reading Contest Chairman.

SIMPSON, HELEN DAVIS

Pendleton, Oregon
Major—English—Senior Scholar
Alpha Phi Alpha Work Manager.
Collegian Reporter, Copy Editor; Wallulah Staff, Forensics, A Cappella Choir Secretary; YWCA Firesides Chairman, Finance Chairman; Vespers Vice President, McCullough Scholarship.

SMITH, JANET ELOISE

Halsey, Oregon
Transfer, Oregon College of Education
Major—English—Senior Scholar
YWCA.

STACER, RICHARD KENT

Tacoma, Washington
Major—History—Senior Scholar
Alpha Psi Delta President
Freshman Class Treasurer, Sophomore Class President, Senior Class Representative, Blue Key President, Dramatics, YWCA Treasurer, Homecoming Manager, Football, Intramural Sports, Honor Code Committee, Who's Who Among Students in American Colleges and Universities.

SOLA, ANDERS EGIL

Everett, Washington
Transfer, Pacific Lutheran College
Major—Biology
Kappa Gamma Rho.

TATE, DOROTHY

Sublimity, Oregon
Major—Biology—Senior Scholar
Alpha Phi Alpha Pledge President, First Vice President
ASWU First Vice President, Who's Who Among Students in American Colleges and Universities, May Princess.

TASKER, DONALD HOMER

Los Angeles, California
Transfer, University of Southern California
Major—Sociology
A Cappella Choir, YWCA Publicity Chairman, President; WSSF Chairman, Vespers, W Club, Methodist Student Council, Fellowship of Reconciliation.

TAYLOR, WINSTON HOWARTH

Salem, Oregon
Major—Public Administration
Kappa Gamma Rho
Collegian Reporter, Blue Key, Songmen, A Cappella Choir, YWCA, Vespers President, Constitutional Revision Committee, Methodist Student Council President.

VIESKO, BARBARA JANE

Salem, Oregon
Major—Physical Education
Alpha Phi Alpha
WAA, Paint Spots, Physical Education Club.

WILLIAMS, JANICE JEAN MOORE

Salem, Oregon
Major—Physical Education
Beta Chi
WAA, Recorder's Assistant, May Pole Dance Director.

INDEX

A CAPPELLA CHOIR	40, 41	Broadwell, Helen	82, 112
Acheson, Mary	36, 78, 113	Brock, Betty	82, 102
Acton, Winsor	82, 103	Brown, Carolyn	118
Adams, Ammon	74, 103	Brown, Prof. E. T.	92
Adams, Harold	43, 68, 105, 117	Brown, Mrs. E. T.	116
Adams, Richard	53, 78, 103	Brown, Kenneth	82
Adams, Shirley	78	Brown, Robert	82
Adkins, Betty	31, 78, 112, 116	Brunson, Betsy Mae	82, 112, 113
Albert, Bob	46, 70, 74, 103	Bucurencu, Freda	74, 102, 118
ALPHA PHI ALPHA	61, 102	Buckner, Wilfred	74
ALPHA PSI DELTA	59, 107	Burgoyne, Ruth	35, 74, 102
ALUMNI PRESIDENT	93	Burkhart, Bette	78, 106
A MIDSUMMER NIGHT'S DREAM	46	Burnet, Jack	78, 106
Anderson, Connie	78	Burns, Roy	78
Anderson, Doris Lee	78, 112	Burton, Donald	74, 103
Anderson, Jerry	27, 78, 103	Burton, Dorothy	78
Anderson, Matt	78, 107	BUSINESS SECRETARY	96
Andrews, Betty	78, 104	Butler, Lois	29, 31, 32, 78, 104
ARCHERY	36	Byrd, Bill	78, 103
Arnold, Dorothy	78, 102	Byrd, Dean	68
ARSENIC AND OLD LACE	45	Byrd, Martha	74, 106
		Byrd, Pat	70
Bain, La Vonne	82, 102, 115	Cain, Ethel Jean	53, 78
Bales, Robert	82	Cake, Marion	78, 90
Balkovic, Robert	82	Calderwood, Dorothy	68
BAND	38, 39	Camp, John	78
Barber, Martin	68	CAP AND GOWN	117
Barber, William	82	Carkin, Jean Alice	31, 78, 102, 118
Barbour, Marshall	48, 74	Carlson, Louise	74, 106
Barnhart, Dean	82, 103	Carolan, Michael	78, 103
Barnick, Don	48, 74, 107	Carpenter, Corrine	82, 102
Barrett, Al	78, 104	Carter, Herbert	89
BASEBALL	20, 21	Carter, Marian	82, 112
BASKETBALL, FRESHMEN	19	Carter, Pat	82, 102
BASKETBALL, VARSITY	16-18	Case, Arthur	74, 107
Batdorf, Bob	82, 103	Case, Roy	82, 107
Bates, Dale	82	Case, Virginia	82, 106
Bates, Dawn	68, 116	Cate, Bill	82, 103
Bates, Laura Jean	82, 102	Caulfield, Shirley	68, 104
Bartholomew, Mary Alice	82, 119	CAVERN MANAGERS	35
Barson, Ilona	52, 82	Christman, Clyde	82
BEARCAT CAVERN	31, 48, 63	Chusid, Monte	78, 107
Bell, Rosella	78, 107	Clark, Prof. W. Herman	92
Bellinger, Margaret	82, 104	Cloudy, Charles	82, 107
Bendickson, Pearl	74	COLLEGE OF MUSIC FACULTY	97
Bennett, Mary	52, 78, 102, 119	COLLEGEIAN	28, 29
Bent, George	82	Constable, George	89
Bentley, Marie	56, 82, 104	Cooke, Bill	31, 82, 103
Bergquist, Elaine	82	Cooper, Betty	74, 106
BETA CHI	61, 104	Copenhaver, John	82, 105
Bigler, Dean	82	Cotton, John	82, 107, 116
Birch, Durrell	78	Craven, Helen	31, 82, 104
Blackman, Shirley	82, 102	Crawford, Gladys	74, 102, 118
Blake, Glenn	82	Crews, Marion	78, 116
Blake, Janet	78, 102	Crowe, Melvin	82
Blake, Janrose	78, 102	Currey, Alida Gale	92, 119
Blanding, Howard	74, 103	Currey, Thyra Jean	82, 102, 119
Blodgett, Corydon	55, 103	Cutler, Louise	78, 104
BLUE KEY	117		
Bohannon, Roy	82, 107	Dahl, Dean Olive M.	31, 62, 92, 116
Bolland, Maxine	78, 106	Daugherty, Alice Faye	83, 112
Bowes, William	82	Davey, Gloria	83, 106
Boyce, Janet	82	Davidson, Mrs.	104
Boyce, Jean	74	Davidson, Orel	48, 68, 103
Bradshaw, Fred	78, 107	Day, Miriam	83, 106
Brewster, Duane	74	DEAN OF MEN	92
Briggs, Beulah	25, 68	DEAN OF THE UNIVERSITY	94
		DEAN OF WOMEN	92
		DELTA PHI	61, 106
		DELTA TAU GAMMA	112
		Demeter, Dave	74, 107

INDEX

Dickey, Ramon	83
Dickson, Bonnie	62, 83, 106
Dickson, Darlene	43, 48, 74, 106, 115
Dietendorf, Barbara	48, 72, 74, 108
Dichm, Merritt	78
Diener, Garryl	74, 107
DIRECTOR OF ADMISSIONS	97
Doerr, Ruth	78, 104
Donovan, Bob	83, 107
Doughton, Doris	78
Doughton, Millard	83, 105
Doughty, Frances W.	92
Douglas, Bob	83
Dowd, Ed	83
Downey, June	78, 112
Downs, Hume	34, 46, 49, 65, 68, 70, 103, 117
Downs, Warren	83
DRAMATICS	44, 45, 46, 62
Drorbaugh, Daryl	79, 107
Duby, Caroline	35, 88, 89
Duncan, Mary Schultz	97
Durland, Wes	79, 116

Eakin, Ellen	79
East, Emma Lou	79, 104
Eberly, Katherine	83, 106
Eddy, Walt	83, 105
Egan, Bill	83, 107
Ellingsworth, Charlotte	88, 89
Ellis, Dean	96
Ellis, Vinton	74, 107
Enest, Clara	97
Erickson, Walter	63, 97, 116
Erikson, Marian	83, 112
Erwert, William	83, 105
Estep, Merlin	79, 107
Estes, Dorothy	72, 74, 106
Ewing, Margaret	34, 48, 75, 106

FACULTY	90-99
FACULTY FIRESIDE	90
Fairclo, Shirley	83
Fairham, Leighton	83
Faminow, Peter	67, 68, 107, 115, 117
Fanger, Cliff	75, 116
Farmer, Ruth	62, 83, 106
Fatland, Bob	83, 105
Fedje, Ray	57, 83, 103
Ferrin, Miriam	36, 79, 106, 116
Field, Don	83
Filbin, Charles	83
Findley, Bob	79, 105
Findley, Eloise	75, 106
Findley, Jane	35, 83, 106, 108
Finney, Ruth	29, 75, 104
Fisher, Marian	79
Fisher, Mary Jean	83
FOOTBALL	12-15
FORENSICS	42-43
Forsythe, Margaret	79, 112
Foster, David	83
Fowler, Constance	92
Fox, Mabel	36, 79, 104
Fraiola, Tony	75
Fredrickson, Elvy	68, 70, 106, 117
Frees, David	79
FRESHMEN	50, 52-53, 62-63, 82-87

FRESHMAN GLEE	50-53, 86-87
FRESHMAN HANDBOOK	32-33
FRESHMAN PRESIDENT	82, 84
FRESHMAN WEEK	62-63
Fretz, Zoe	68, 70, 106, 117
Fries, Jean	31, 79, 106
Froman, Wilma	83, 102
Fry, Marica	75, 106, 118
Furno, Chuck	35, 74, 75
FUSSER'S GUIDE	32-33

Gabriel, Peggy	79, 112
Gardner, Bob	79, 107
Gatch, Anita	79
Gatke, Dr. R. M.	35, 92
Geddes, Dave	79, 105
Geist, Dean Melvin H.	97
Gibbons, Jean	79, 104
Gilson, Melvin	56, 83, 105
Gilstrap, Fernel	83
Gladen, Liss	35, 68, 70, 104
Glasse, Jack	31, 63, 79, 105, 116
Glasse, Jim	79, 105
Gleason, Erlene	75
Gollihar, Dale	79, 115
Gooding, Anna Ruth	79, 112
Graber, Jeannette	68
GRADUATE MANAGER	96
Graham, Dorothea	112, 119
Griffiths, Lloyd	83, 105
Grimm, Billie	83, 102
Grinde, Lee	83, 103
Gueffroy, Phyllis	72, 75, 119

Habernicht, Bill	79, 105
Hadley, Shirley McKay	75, 104
Hageman, Lois	83
Haight, June Dimond	79, 106
Halvorsen, Michael	83, 105
Hamilton, Bob	25, 26, 34, 48, 68, 70, 117
Hanigan, Grace	83, 102
Hanson, Robert	83
Hardy, Rex	83, 105
Harnsberger, Glennerva	68, 102
Harper, Prof. J. W. C.	93
Harper, Joyce	79, 104
Harris, Naomi	83, 102
Harrold, Elmer	8, 75, 105
Hatfield, Mark	35, 47, 72, 75, 103
Hathaway, Barbara	43, 52, 79, 115
Hawkins, Mary Ann	75
Haworth, Prof. C. C.	93
Healy, Frank	75
Heilman, Robert	83
Heinz, Ina Mae	83, 112
HELL WEEK	58-59
Helsby, Betty	84
Henderson, Okley	84
Herd, Margaret	84, 102, 113
Herr, Roy	84, 107
Herrick, Bill	66, 68, 107, 117
HIGH TOR	44, 62
Hill, Marjorie	84, 104
Hoar, Dorothy	84, 102
Hobbs, Bill	75, 103
Hobbs, Virginia	84, 106
Hoffmaster, Hazel	84, 106
Holm, Betty	68
Holmes, Doris	75
Holtzman, Jean	79, 104
HOME COMING	54-55, 72
HONORARIES	111-119
Hoover, Margaret	84, 102

INDEX

Hoover, Rosalie	79, 112
Hopfer, Edna Mae	66, 68, 109, 115
Hougendobler, Mary	84, 106
Howd, Beryl	84
Huber, Irma	84, 102
Huddleston, Bob	84, 107
Hughell, Ed	84
Hughlett, Margaret	84, 106
Hunt, Shirley	79, 106
Hunter, Warren	84, 103
Hurley, Mervyn	84, 105
Huston, Hollis	35, 75, 107, 113
Huston, Mary Jean	48, 75, 107, 113
Hutchins, Dr. H. C.	93
Ibach, Luella	75, 112, 116
Idon, Faith	84
IN MEMORY	98-99
INTERFRATERNITY COUNCIL	35
INTERNATIONAL CLUB	119
INTERSORORITY COUNCIL	35
Irwin, Virginia	84, 106
Jack, Lorena N.	93
Jackson, Jean	68, 117, 118
Jacobsen, Viola	84, 104
Jacobson, Ken	75
Jarman, Anita	84, 102
Jaquith, Paul	84, 103
Jensen, Miriam	25, 32, 68, 70, 104, 117
Johns, Dick	79
Jones, Alice	79, 104
Jones, Dale	79
Jones, Doris	79
Jones, Ted	8, 79, 105
Jones, Vicki	84, 106
Jory, Betty Jean	75
Judd, Jackie	75
Judd, Paul	79, 115
JUNIORS	72-77, 50-51
JUNIOR PRESIDENT	74, 76
Kahle, Ernest	84, 107
KANGAROO KOURT	56-57
KAPPA GAMMA RHO	59, 103
Kauffman, Yvonne	84, 106
Keene, Roy S.	9, 13, 93, 119
Keene, Mrs. Roy S.	116
Kelli, Frances	76, 106
Kelly, Dave	79, 107
Kennedy, Elizabeth	93
Kenney, Dorothy	84, 102
Kenney, Patricia	84
Kister, Gub	76, 107
Klein, Ellis	84
Knopf, Dr. Carl S.	99
Kohler, Dr. H. C.	93
Koschmider, Dorothy	76, 104
Kunke, Gordon	79, 105
Lamb, Pat	56, 84, 104
Lantz, Dr. R. F.	94
Lathrop, Thelma	84, 106
Latimer, Lois E.	94
Laughlin, Dr. S. B.	94
Laughlin, Mary	80, 104
LAUSANNE HALL	60, 108-109

LAW SCHOOL	88-89
LAW SCHOOL FACULTY	96
LAW SCHOOL OFFICERS	88
Lee, Florence	84, 106
Lee, Bob	76, 105
Leigh, Lynn	84, 107
Leonard, Flora	68, 116
Leslie, Millard	80, 107
Lewis, Darrell	84
Lewis, Lois	84, 113, 119
Lewis, Nadine	80
LIBERAL ARTS FACULTY	92-96
Libby, Alice	37, 80, 108, 113
Libby, Paul	76
Lidcke, William	84
Lieser, Gilbert	68, 103
Lindstrom, Muriel	68, 70, 106
Link, Don	80, 107
Little, Paul	89
LITTLE THEATER	115
Livesay, Mary Margaret	25, 76, 112, 118
LIVING GROUPS	101-109
Lockenour, Dr. Roy M.	96
Long, Leroy	43, 76
Long, Delvon	84
Loop, James	84, 103
Loop, Virginia	80, 102
Loter, Ray	85, 105
Lovell, Dr. R. I.	90, 94
Lovell, Charles	85
Low, Marianne	85, 102
Ludden, Bennet	97
Lunt, Allen	85, 105
Luther, Dr. Chester F.	5, 34, 92, 94
Luthi, Brenner	82, 85, 103
Luthy, George	76, 103
MacHirron, Helen	97, 118
MacMillan, Marian	85, 102
McAbee, Harold	68, 107
McCall, Wallace	43, 80
McClain, Milton	85, 105
McClelland, Sally	80, 106
McClendon, Joyce	80, 106
McCullough, Helen	69
McCollum, Shirley	85, 102
McGowan, Troy	85, 105
McHill, Lawrence	85, 107
McIntyre, Lucy	104
McKay, Mary	80, 104
McKay, Mary Jean	80, 104
McKinlay, Elbert	80, 103
McLeod, Dr. Kenneth	94
Macauley, Jackie	80, 106, 116
Mack, Jeannette	85, 106
Macy, John	22, 48, 76, 107, 119
Madsen, Myra	35, 53, 80, 104
Markee, Keith	25, 35, 71, 76, 117
Markee, Kent	25, 35, 71, 76, 117
Martin, John	31, 48, 66, 69, 105, 117
Mason, Ella Rose	31, 73, 76, 106, 112, 116
Masse, Eunice	80, 118
MATHEMATICS	4-5
Mathews, Nadene	25, 29, 30, 34, 48, 76, 108
Matthes, Wilma	69, 102, 116
Matthews, Dr. James T.	98
Matthews, Ruth	25, 29, 67, 69, 70, 106
Maulding, Marge	80, 94, 104
May, David	107
Mayer, Lois	69
MAY WEEKEND	46-47, 72
McIlhoff, Olene	85, 104
Meier, Myrtle	85, 104

INDEX

Melson, David	85, 105
Merriott, William	80, 107
Milch, Jeanne	85, 112
Miles, Ward	73, 76, 116
Miller, Ervin	69, 107
Miller, Dr. H. G.	94
Miller, Ralph	85, 103
Monk, Dr. C. R.	94
Monroe, Harriett	25, 46, 67, 69, 109, 113
Monroe, Ina	85
Montandon, Katherine	85
Moore, Gale	85, 107
Moore, Louise	88, 89
Moore, Mary Lou	76, 112
Morange, Marian	94
Morgan, Shirlee	80, 106
Morley, Russell	85
Morris, Charles	85, 103
Morton, Helen	80
Moser, Dix	25, 28, 34, 48, 62, 76, 117
Moses, Mary	85, 112
Mozee, Yvonne	80, 106, 118
Mudd, Jack	80, 119
MU PHI EPSILON	118
Myers, Lenore	80, 115
Nash, Keith	80
NAVY	2-11
Neal, James	85, 107
Neal, Phyllis	85, 102
Nelson, Lorraine	85, 106
Nelson, Theodora	80, 112, 113
Nesbitt, William	8, 35, 69, 105, 117
Nickel, June	85, 102
Nielson, Bernice	80, 106
Nims, Mary	63, 85, 106
Noll, Margie	63, 85, 106
Nordean, Beth	80, 104
Nordean, Beverly	69, 71, 104
Nowack, Frederick	80
Nye, Francis	76, 116
Oakes, Miriam	62, 85, 104
Oeder, Robert	85, 107
Ogdahl, Ted	13, 25, 31, 74, 76, 103, 117
Oliver, Dr. E. S.	95
Oliver, Jay	35, 76, 107
Oliver, Lillian	81
Olson, William	85, 103
Olson, Gene	35, 80, 103
Olson, Olivia	35, 47, 69, 71, 102
Olson, Pauline	80, 102
Olson, Wallace	29, 90, 107
ORCHESTRA	39
Orwig, Bernice	95
Owen, Mary Anne	76, 104
PACE SETTERS	66-67
Palmer, Merle	31, 69, 107, 117
Pankaskie, Lewis	97
Patterson, Janice	48, 81, 106
Payne, Bettliellen	76, 116
Pearce, Dr. Helen	95
Petz, Betty	85, 106
Pemberton, Margaret	31, 48, 76, 90, 113
Penman, Marjorie	85, 106
Pentney, Lewis	80

Perry, Bob	76, 103
PHILADELPHIA STORY, THE	44-45
Phillips, Lois	54, 76, 104
PHYSICAL EDUCATION	8-11
PHYSICAL EDUCATION CLUB	119
PHYSICS	6-7
Peirstorff, Lucille	77, 106
Pomeroy, Jack	77
Porter, Ester	85
Priem, Leroy	85, 107
Provost, Betty	80, 102
PUBLICATIONS BOARD	34
Purcell, Eleanor	80
Rabe, Dr. H. E.	43, 95
RALLY SQUAD	34-35
Ramage, Louise	85, 104
Randall, Betty	48, 85, 106
Ransom, Eloise	86
Ransom, Ruth	77
Ratcliffe, Robert	80, 105
Rath, Jim	86, 107
RECORDER	97
Reed, Connie	80
Reeves, Marjorie	80
Richmond, Merton	86
Ringland, David	86
Ringle, Gordon	86
Ringnald, Margaret	62, 95, 115
Ringnald, Murco	34, 95
Roberts, T. S.	97
Robinson, Lois	80, 112
Rock, Imogene	86, 102
Rohrs, Catherine	37, 43, 86
Rose, Wayne	80, 105
Ross, Daniel	80
Roth, John	80
Routson, Virginia	81, 112, 113, 119
Rowland, Millicent-June	81
Runyan, Ronnie	22, 81, 103, 119
RUSH WEEK	60-61
Russell, George	81
Ryan, Pat	71, 77, 104
Ryan, Paul	86
Sackett, Betty	35, 69, 71, 106
Savage, Donna Belle	81, 102
Saxton, Wes	16, 86
Schaad, Ben	71, 77, 107, 117, 119
Scheuerman, Opal	90, 86, 106
Schlegel, Bob	86, 105
Schlesinger, Ralph	25, 27, 34, 48, 69
Schmidt, Gene	16, 18
Schmidt, Reeva	31, 56, 69, 71, 109, 119
Schramm, Susanna	77, 104
Schulze, Dr. D. H.	92, 95, 117
Schwartz, Arlene	86, 106
Scott, Vern	86
Seacat, Beryl	36, 69, 104
Sechrist, Aileen	77, 106
Seigmund, Margaret	69
Selden, Jean	81, 102
SENIORS	51, 65-71
SENIOR SCHOLARS	70-71
SENIOR PRESIDENT	66, 67
Shelton, Reid	63, 86, 105
Sherman, Dr. C. L.	95
Sherman, Jean Longley	77, 104
Sherwood, Jim	81, 107
Shinkle, Dollyanna	81, 104
Shinn, Vesta	86, 104
Short, Pat	69, 104, 116
Short, Ray	43, 72, 77, 103

INDEX

Siewert, Beth	77	Torgeson, Ken	77, 107
SIGMA TAU	58, 59, 105	TRACK	22, 23
Simmons, Bob	81, 107	Tracy, Pat	77, 104
Simpson, Helen Davis	69, 71	TRUSTEE PRESIDENT	93
Simpson, Herbert	103	Tuchudy, Dr. R. H.	96
Sipes, Marjorie	77, 106	Tucker, Betty Jean	87, 102
Sloper, Val	81, 105	Twedt, Mark	81, 103
Smith, Betty Jean	81, 104	UNIVERSITY PRESIDENT	62, 91, 95
Smith, Carol	86	Upjohn, Donna	87, 106
Smith, David	86		
Smith, Eloise	69, 71	Valliant, Shirley	81, 106
Smith, Dr. G. Herbert	62, 91, 95	Van Santen, Peggy	87
Smith, Glenn	86, 107	Van Skike, Jean	77
Smith, Nevitt	86, 107	Vazakas, Dr. A. A.	96
Smith, Dr. Ray L.	96	VESPERS	113
Spangler, James	86, 103, 107	Viesko, Barbara	69, 102
SOCCER	36-37	Vogt, Alan	53, 63, 87
SOFTBALL	22-23		
Sola, Andy	69	WAA	36-37
SOPHOMORES	78-81	Wagner, Maxine	87, 102
SOPHOMORE PRESIDENT	78, 80	Walker, Robert	81
Southwick, Niles	81, 103	Wallace, Mrs. Paul B.	116
Sparks, Leslie J.	9, 34, 96	Wallin, Peggy	87, 102
Sparrow, Osvelle	77, 107	WALLULAH	30-31
Spears, Sybil	48, 73, 77, 104	Watkins, John	87, 103
Spencer, Robinson	96	Watts, Jack	87, 107
Stacer, Dick	25, 34, 35, 69, 70, 71, 107, 116, 117	W CLUB	114
Stahr, Virginia	86, 112, 115	Weaver, Martha	81, 116
Stanley, Gordon	86, 103	Weaver, Bob	81, 107
Stapleton, Mary	86, 106	Webb-Bowen, Jean	87, 104
Steeves, Richard	81, 105	Weir, Bernice	87, 102
Steinbock, Leonard	81, 115	Weist, Marion	87
Stone, Emily	97	Wells, Beverly	81
Stortz, Bill	86, 105	Wells, Hazel	87, 112
Stoudenmeyer, Don	86, 103	Wertz, Dale	7, 81
Straumfjord, Jon	52, 86, 103	White, Agnes	87
Strellman, Dick	81, 103	White, Pat	77, 103
Strickfaden, Jack	81, 107	WHO'S WHO	25
Stricklin, Nancy	77, 104	Wicks, Charles	29, 35, 45, 87, 107
Struther, Ann	86, 106	Wicks, Richard	35, 43, 80, 81, 107, 116
STUDENT COUNCIL	34	Wienert, Betty	87, 102
Stuys, Louise	81, 90, 106	Williams, Clint	81, 103
Summers, Vern	81, 105	Williams, Jean	69
Swan, Joyce	86, 112	Williams, Thomas	87, 105
Swanson, Betty Ann	77, 106	Williams, Velora	87, 112
Swanson, Gloria	86	Wills, Lawrence	8, 34, 48, 81, 105, 119
		Wilson, James	87
Tallant, Barbara	86, 104	Wilson, Jess	87, 107
Tasker, Don	116	Wilson, Kay	36, 81, 106
Tate, Dorothy	25, 34, 46, 49, 65, 69, 71	Wilson, Mary Helen	77, 112, 113
TAU KAPPA ALPHA	118	Winegar, Harold	87, 107
Taylor, Ralph	52, 86, 105	Wing, Jean	81, 104
Taylor, Robert	77	Winkenwerder, Erwin	87, 107
Taylor, Winston	25, 69, 103, 113, 117	Winterscheid, Loren	87, 103
Teeter, Dave	86, 103	Wire, Mary Elizabeth	87
Templeton, Jean	81	Wirtz, Willard	96
Tesarik, Dave	78, 81, 103	Wittliff, Jack	34, 52, 87, 103
THESE JUNIORS SERVE	72, 73	Witzel, Sam	87, 107
THETA ALPHA PHI	115	Wolf, Geraldyn	87
Thomas, Catharine	29, 43, 81, 106, 116	Wonderlick, Margaret	81, 106
Thomas, Helen	81	Woods, Janet	81, 104
Thomas, William	89	Wrisley, Louise	81, 106, 113, 119
Thomson, Ian	87, 107	Wunsch, Gloria	87
THROUGH THE YEAR	48, 49		
Todd, Eleanor	25, 35, 77, 106	Yeoman, Calvin	87, 105
Toolson, Earl	77, 119	YMCA	116
Torbet, Olive	37, 87, 102	Yocum, Roberta Jean	87, 102
		Young, Carol	81, 106
		YWCA	116
		Zahradnik, Donald	87
		Zimmerman, Helen	77, 106

ADVERTISING INDEX

Bertelson & Son	125	Moderne	139
Bishop's	130	Montgomery Wards	133
Bloch's Golden Rule	125	Morris Optical	135
Blue Bird	131	Needham's	127
Bosler Electric	131	Merrill D. Ohling	131
Breithaupt's	128	Frosty Olson	124
Brown's	127	Pade's	131
Bushong & Co.	134	Cliff Parker	124
Capital Business College	123	Penney's	136
Capital City Laundry	128	Pomeroy & Keene	138
Chadwick Hotels	130	Price's	127
Cherry Caty Baking Co.	138	Professional Men's Page	137
First National Bank	139	Quisenberry's	128
Gay's	123	Quelle Cafe	133
Gevurtz Furniture Co.	123	Roen's	136
J. K. Gill Co.	136	S & N Clothiers	139
Golden Pheasant	127	Salem Engraving	123
The Grill	139	Salem Laundry	126
Hartman Bros.	125	Scellars & Foley	139
Kay's	128	Sears Roebuck	129
Kuhn's	127	State Street Grocery	135
Ladd & Bush - U. S. Nat'l Bank	133	Statesman	127
Leon's	131	Stevens & Son	136
Man's Shop	139	Sunfreze	139
Master Engravers	131	Valley Motor Co.	128
Meier & Frank	124	Willamette Grocery	133
Metropolitan Store	127	Willamette University	132
Miller's	123	Wille's	135
Model Food Market	135	Y. M. C. A.	135



THIS BOOK DOES
NOT LEAVE
THE LIBRARY

