

The Class of 1971
Presents
THE SOUVENIR EDITION



Willamette University's
60th Annual Freshman Glee
March 30, 1968

The Spirit and Personalities



Did you hear the one about . . . ?



Seniors support George.



Dr. Trueblood without Geritol.

Of Glee Night



Ladies and gentlemen . . . and Freshmen



Seniors blow it!



Senior antics?





You can't win 'em all!



La classe, au Beal.

The Joys & Sorrows



Sophomores swim.



Would you believe, 67



Brotherly Love?

Photography: L. Gilmore, D. Davis, G. Ibbott, W. Fitch, S. Hazelette, G. Hurlburt, B. Hammel, A. Rose, J. Greenwood, D. Pearson.



It doesn't just happen on Blue Monday.

Of Blue Monday



Yes, its an arrow.



The finished product.



Willamette's most honored tradition.



ZALES
JEWELERS

AMERICAS' - LARGEST - DIAMOND - MERCHANT
SALEM PLAZA, SALEM, OREGON

B & W SHOE SERVICE

While You Rest Service
Located in
Capitol Shopping Center
Salem, Oregon
Phone 364-6586

SAMBO'S RESTAURANTS

- PANCAKES
- STEAKS
- CHICKEN
- SANDWICHES

Sambo's
RESTAURANTS

"THEY'RE GR-R-REAT"

SALEM
SAMBO'S PANCAKE HOUSE
480 Liberty SE -----585-6403

Anderson's
"Creatively Yours"

383 Court St. N.E.
Salem, Oregon

EDITH ANDERSON
ED ANDERSON

Area Code 503
364-9770
Telephones 362-8352

Congratulations

FROM

FIRE SIDE



ON ANOTHER SUCCESSFUL
FRESHMAN GLEE

"CLEANED RIGHT AND PRESSED RIGHT BY BURRIGHT"



PHONE EM 3-4242
198 CHURCH STREET S.E.
SALEM OREGON

SHAKES – HAMBURGERS
FRIES – CHEESEBURGERS
TACOS – RANCH FRIED CHICKEN



14TH AND STATE STREET
PH: 585-4251

2 BLOCKS EAST OF THE CAMPUS

WATCH REPAIR, DIAMONDS, WATCHES, RINGS, ETC.

COURT STREET JEWELRY

484 COURT STREET
SALEM, OREGON

GEORGE ISHIDA

Phone EM 3-8104

Best Wishes from the

**Marion
Motor Hotel**

200 Commercial S.E.
Salem, Oregon



Jackson Jewelers

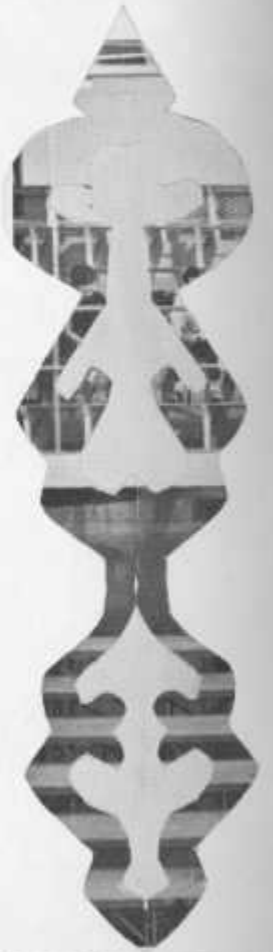
225 LIBERTY ST. N.E. Ph. 363-5640
SALEM, OREGON

 **BISHOP'S**

SALEM'S QUALITY MEN'S STORE SINCE 1890

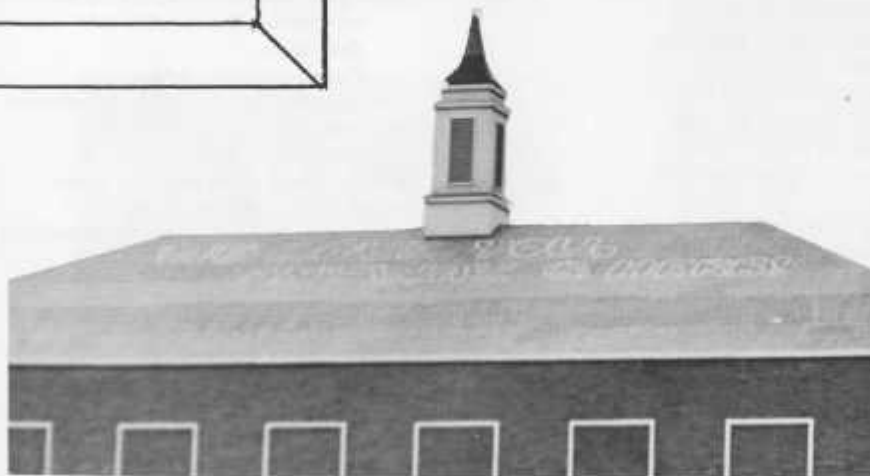
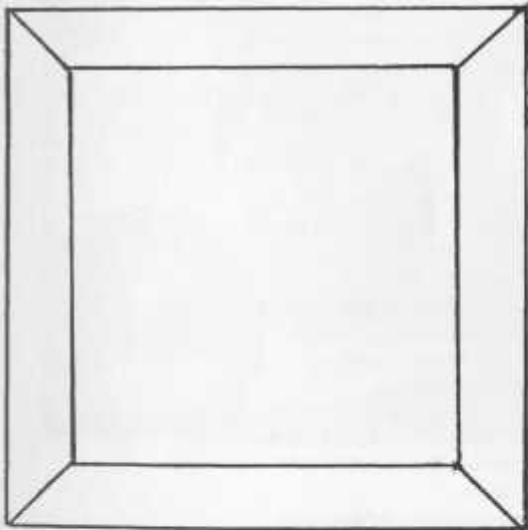
SALEM PLAZA







Senior Cut-ups



Sixty Years of Glee

Freshmen Glee has been a tradition at Willamette for a long time. Since its beginning in 1909, when two members of the class of 1912 challenged the other classes to a song writing contest, the event has grown. At first, the classes would merely march onto the stage and present their song, but now formations play a major part in deciding on which class will capture the Glee banner.

Many traditions have developed over the years to increase the excitement surrounding Glee. Professor James Mathews, one of the first faculty members to announce the judge's decision, began the tradition of the long period of stalling before awarding the banner. Another interesting tradition is that of Blue Monday. The Monday following Glee, bets made between different class members are paid off. The bets range from catching eggs to races of all kinds. The highlight of the day, however, is when the losing class must wade through the Mill Stream.

SENIOR CLASS SONG

"Serenade For A Senior"

You dance a muted dance and there is love,
There is love in the way that you move.
Enough to remember, enough to forget;
Now we need the wilder dance of life.
Now your last song and soon iced amber colors
Chastize the cute child that you've been.
You celebrate gleefully, strip off the rules,
Virgin rules that pristinely protect you
From subtle wildness almost demure.
You laugh and you leave and
Hope with death to celebrate your life.
We've danced a muted dance and there was love,
There was love in the way that you moved.
Enough to remember, enough forgotten;
We'll have our wilder dance of life.
We'll have our wilder dance of life.
We'll have our wilder dance of life.

Music by Clay Morris

Words by Brian Gard

FRESHMEN CLASS SONG

"There's Only A Meadow"

There's only a meadow; the rain in the sky
We stand there and watch as the world passes by.
We age and we wither and finally die,
There's only tomorrow for those who will try.
We'll fly over mountains, the hills and the seas;
We'll show all who linger on life's lonely shores
How two lonely people survive through the storm
With love,
And the waves hit the sand on eternally,
Struggling for all who know how life can be.
Living on, searching for one peaceful island.
There's only a hillside all barren and old,
And all of life's children go hungry and cold.
They passed by the answer, now with tears in their eyes,
They struggle and perish as the wind passes by.
We gave them the answer—we gave them the key.
They squandered their chances and returned to the sea,
And now there's a meadow all covered with leaves
and love. And love.

Music and Lyrics by Larry Cunningham

As Glee grew, the location was changed. After being held in Waller Chapel, Glee moved to the First Methodist Church and then to the Salem Armory. With the completion of the gym on the Willamette campus, Glee had a permanent home.

Judging for Glee is divided into three areas with a possible total of eighty-five points. The judges and their specific areas for this year are Words and Music: Mr. Percy Faith, Mr. Milo Wold, Mr. Robert Voight; Vocal Rendition: Mr. Melvin H. Geist, The Reverend Norman Lawson, Dr. Robert B. Glasgou, Mr. Charles Hanna; and Formation: Major General Donald Anderson, Dr. Daniel H. Schulze, and The Honorable F. F. (Monty) Montgomery.

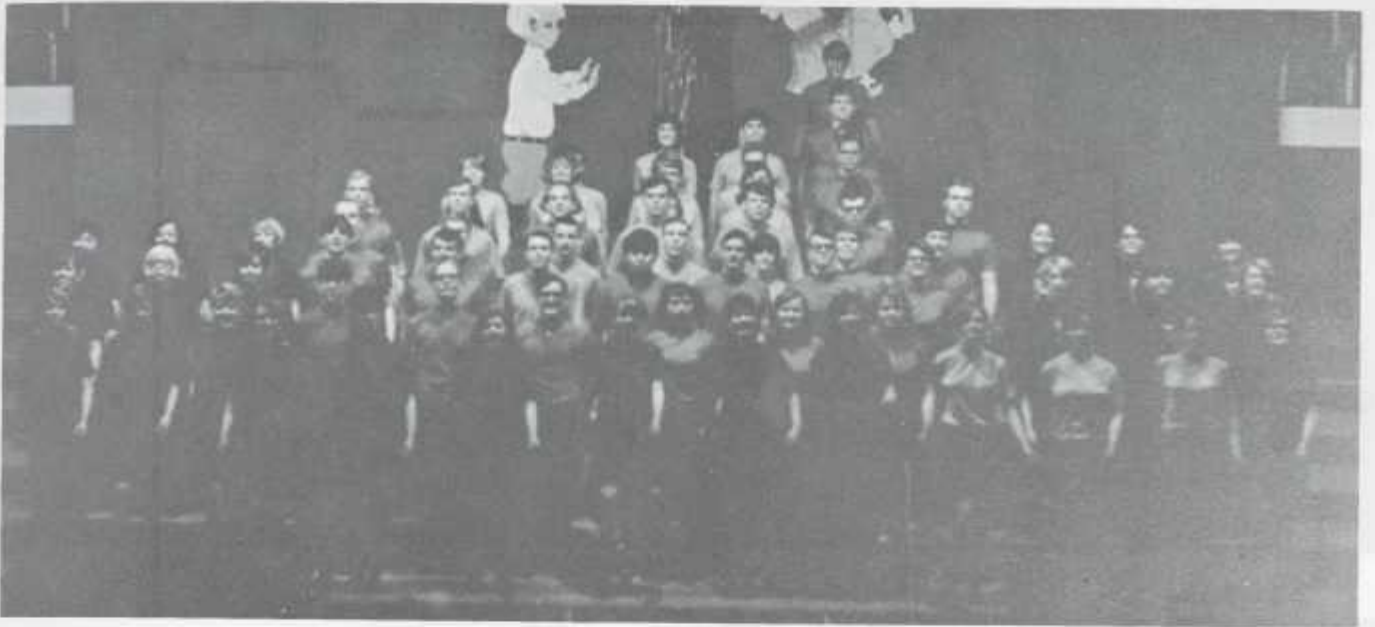
The 60th annual Freshmen Glee is dedicated to Dr. Cecil R. Monk, head of the Biology department, who has been at Willamette since the fall of 1927. Dr. Monk is retiring this year after forty-one years of service to the University.

SOPHOMORE CLASS SONG

"Dream of Love"

Sleep my love and dream of me
Sleep and dream of roses without thorns
Dream of laughter without any tears
Dream, dream of waves without a shore . . .
(Floating on the ocean in my big red boat—
Here's a wave
Duck again
Water, water everywhere—
Splashing in the water from my big red boat—
Here's a clam
Hold my hand—)
Dream, dream of waves without a shore . . .
Sleep after love and dream of me
Sleep and dream of never-ending
Dream of arms around you
Dream, dream of waves without a shore . . .
(Floating on the ocean in my big red boat—
Here's a wave
Duck again
Water, water everywhere—
Splashing in the water from my big red boat—
Here's a clam
Hold my hand—)
Dream, dream of waves without a shore . . .
Sleep my love and dream of me . . .
(Floating on the ocean in my big red boat)
Dream of laughter without any tears . . .
(here's a clam
Hold my hand—)
Sleep my love and dream of me . . .

Music and Lyrics by Bruce Robertson

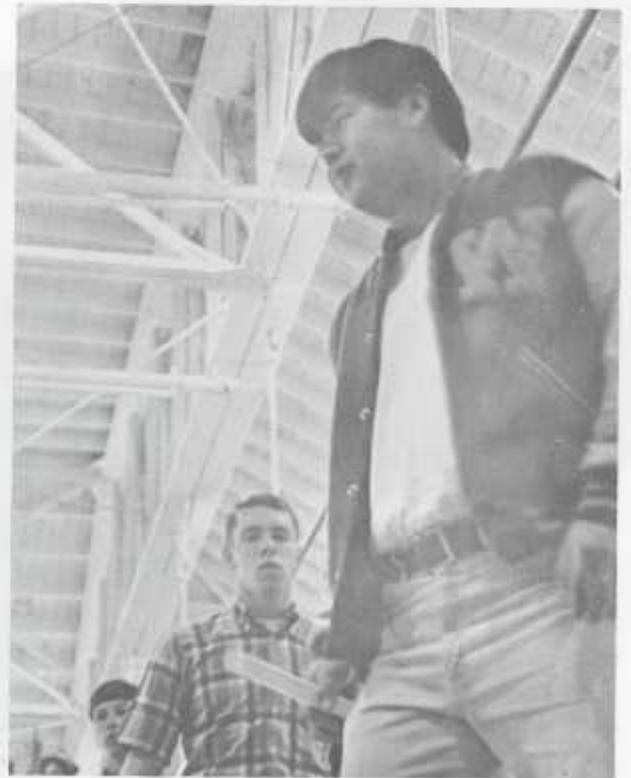


They Were Only Dreaming



All right, it's like this.

Sophomores sing it out.



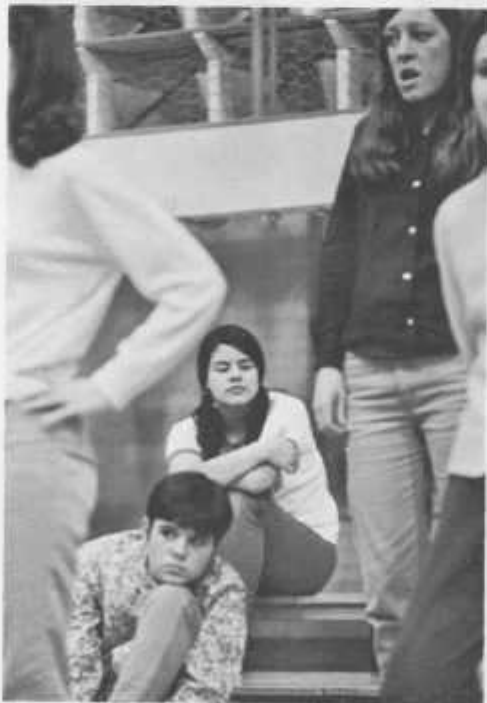
Hup 2 - 3 - 4.



Freshmen Frolic to Third



Louder, altos:



That 5 a.m. practice.



Pivot 2 - 3 - 4!





Seniors "Serenade" to Second



The bods have it!



Concentration.



Denny's at it again.

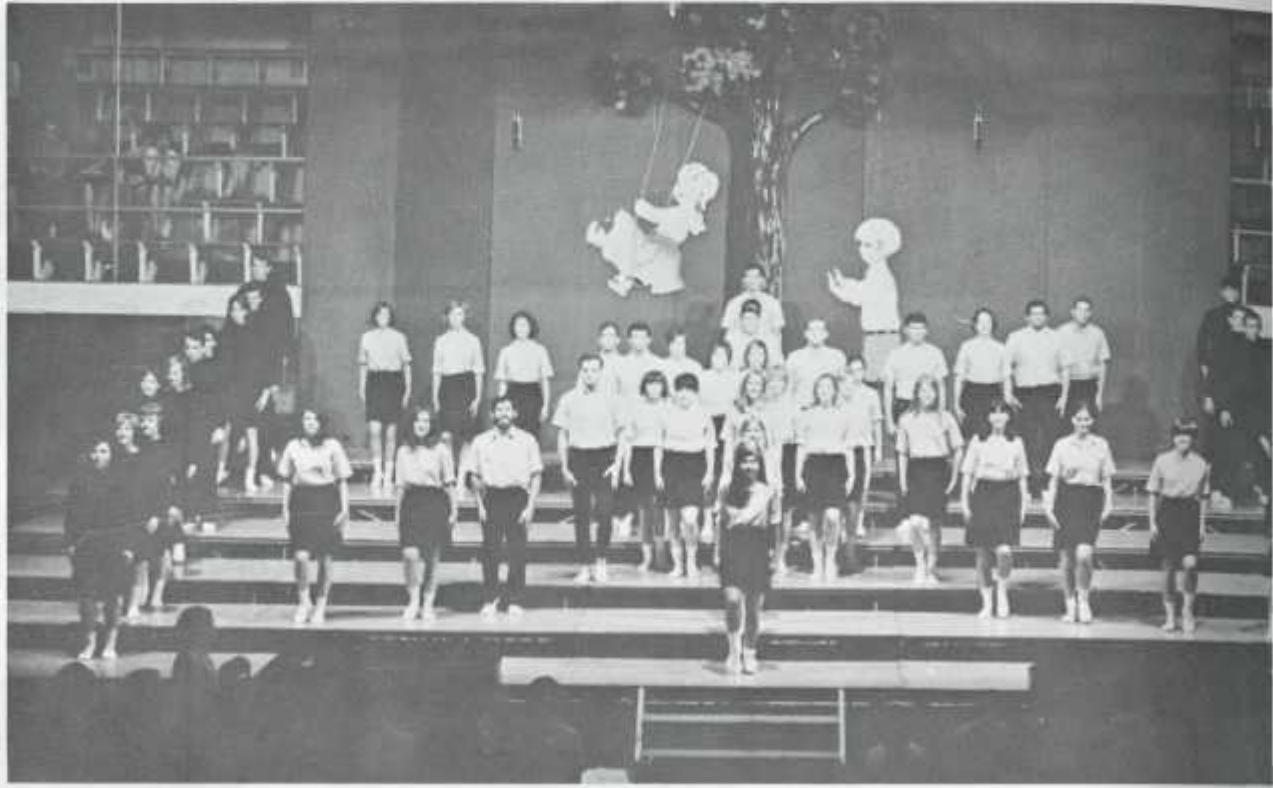


Sue keeps it up, too.



The legs do, too!

They Found the Sun



Juniors Claim Glee Banner



Let's get it right



1-2-3-4

"ONE CHAIN OF BRASS"

One chain of brass
Touches life and tomorrow.
One chain of brass
Links two lives; an image born.

One hill to climb,
Two minds to run -
To seek a light;
To find the sun.

So fly with me
Time to grow, in a daydream.
One chain of brass
Links two lives, in harmony.

Music and Lyrics by Wendy Wolf
Arranged by Roger Paulson and Glenda Hieber



Treasured moment.

X's and O's.

