

Relating Contemporary Willamette University

# Willamette Scene



July, 1972

Oregon Was Their Laboratory — page 4

## AN INTERVIEW WITH JIM CORSON

# Interim President likes teamwork approach

"The past should not be a hitching post; it should be a starting block."

It's the kind of line you expect from James H. Corson, the new Interim President of Willamette University. His conversation is dotted with aphorisms which reveal his philosophy of administering a college.

The Interim President doesn't come on strongly in a way that a listener feels overwhelmed. It takes awhile to realize that he's been around—that, in his informal manner and old-shoe conversation, Jim Corson is dispensing a substantial amount of wisdom which reflects years of experience in the field of education.

### A Frequent Smile

President Corson is big and tough-looking — tough-looking until he flashes a wide smile, which is frequently. The first impression is that he must have been a good tackle somewhere. He was — at University of Pacific and Modesto Junior College. Captain. All-Conference. Most Valuable Player. It's not surprising either to learn that he could throw a discus far enough to win a bronze medal in the 1928 Olympics. (He appears amused that the Russian women now throw the discus — a lighter one — farther than his Olympic effort of 154 feet, 8 inches.)

The Interim President moves easily from one conversational area to another, but there is an extra zest when sports are the subject. He likes to talk about his track specialty, the discus, of course, but he also enjoys talking about what the other fellows do or did.

The other fellow is one of the keys to Jim Corson's successful career in education. He's interested in the people who come to a college, and he likes to work with them and feel a sense of everyone working together. He dislikes the "It's-got-to-be-me" approach.

### Prefers campus teamwork

President Corson's preference for teamwork conflicts with the concept of a campus family. "A family has a father," he says, "and I don't want to be a father on campus. You know, it's possible that I could be wrong once in a while. I prefer the concept of a campus community — everyone pulling together. I want participatory involvement. It can be made in different ways . . . that will depend upon the individual."

Let one be led to believe that the new Willamette president will sit around and wait for others to make the decisions, he added, "But, if the campus community wants just a few of us to make all of the decisions, we'll make them. You can't wait until everyone is ready to participate. We're not going to avoid responsibility. The buck stops here."

Perhaps Jim Corson believes in decision by consensus? "I don't consider a 40 to 39 vote against my opinion to be a mandate. And, if you wait for a unanimous decision on everything, you'll never act. However, you must listen to other people. If you ask for input and never react to it, you won't be



**"I want to help Willamette. I feel as though I've been preparing for this position for 25 years."**

getting input very long. I like to work with others, but they will jolly well know I haven't abdicated." **Not wasting time**

On campus, many people would empathize with any person who takes on the interim presidency. They think it's a tough job. Corson says, "The problem is to become informed sufficiently in a limited amount of time. I plan to give the job the full treatment, not to limit myself too much but not to take on too much either. For example, we have some positions to fill. It might be nice to leave a few of them for the permanent president to determine, but I believe we'd be helping him if we didn't throw the whole thing in his lap. We should set priorities and go to work immediately."

Even before he officially became the top administrator July 6, President Corson was meeting people on campus. He wants to meet the new and old. He finds a special kinship to the new students, faculty and administrators on campus. "We're new together. We're arriving on the campus with our aspirations at the same time."

### "I want to help Willamette"

What is his aspiration? "I want to help Willamette. I feel as though I've been preparing for this position for 25 years."

Many on campus wondered how Jim Corson and Willamette got together. Actually, when the college was faced with the pressing need of getting somebody to step in when Roger Fritz departed, Board Chairman George Atkinson just happened to know a very able man who might be interested in a short term as president — a man with the credentials who didn't care to stay on as permanent president. The man, of course, was Jim Corson and the executive committee approved of the idea.

When Mr. Atkinson contacted him, Jim Corson was envisioning retirement down in the Bay Area

**"I want to maintain a flexible approach to campus governance . . . an environment conducive to mutual motivation."**

of California. He was completing 13 years of service working as executive secretary of the California Association of School Administrators. He was taken aback by the offer to head Willamette until a new president is found, but the choice seemed obvious to many after it was made.

Going on 67 years old, the Interim President comes to Willamette with no desire to seek glory. One of his early comments to cabinet people and public relations was that he wanted to assist where he could, but no one should be concerned with promoting Jim Corson; he'd speak and make appearances where they thought he should, but he did not want any personal promotion. "I want to be visible and active where it will help."

### Recalls G. Herbert Smith

President Corson didn't know a lot about Willamette before the presidential talks began. However, he said, "I heard about Willamette from time to time and I always heard favorably." He tended to think of former President G. Herbert Smith in connection with Willamette because he and Smith met at a conference at Purdue years ago, and he recalled how Smith later came to Willamette.

In his first appearances on campus, the new president made it obvious that he likes to talk to and about students. "One of the reasons I wanted to be here for summer orientation was because I wanted the students to get a shot at me early. I want to know their needs and concerns."

At a rap session, one student asked him a direct question in reference to his relationship to the Chairman of the Board of Trustees: "How much are you going to be on your own — be your own man?" Jim Corson replied just as directly: "I can assure you I'm not anybody's man. I'll try to call the shots as I see them. I've got no ring in my nose." He then went on to tell the students how much he admired George Atkinson for his dedication to his church and to Willamette.

Another direct student question, this one in regard to the chaplaincy. He said, "I would like to see funds restored to the chaplaincy this year. I wouldn't want to have an entire school year without a chaplain."

### Students appreciate candor

The students seemed to appreciate his candor. When he didn't have an answer for them, he told them so. He said that he didn't know the student language of the 70's (and wanted their help), that he hoped they would tell him when they think he's going wrong.

During the session, the president revealed an uncanny ability to remember names — and an uncanny ability to recite lines from philosopher-poets, especially those whose works deal heavily with nature. It was obvious that he has spent many hours with Wordsworth, Longfellow, and Emerson.

When discussing his role, he said the job of any campus administrator is to help others on

## WILLAMETTE SCENE

Vol. 5, No. 7  
July, 1972

Published January (twice), February, March, April (twice), July, September, October (twice) and November by Willamette University, Salem, Oregon 97301 for constituents of Willamette University.

Second class postage paid at Salem, Oregon 97301

This issue of the *Willamette Scene* is published for the combined circulation of the *Oregon Statesman* and *Capital Journal* newspapers, Salem. Willamette University is solely responsible for the editorial contents and letters should be addressed to Editor, *Willamette Scene*, Willamette University, Salem, Oregon 97301.

Editor, Robert C. Woodle  
Assistant Editor, Jan McMillin

Contributing writers: Ralph Wright, John Simmons, Kathy Kaster, and Eric Nelson. Photography, Gerry Lewin.

campus in the achievement of their highest expectations. "Look, it's easy to kick a kid off campus. It's not nearly so easy to work out his problems with him."

#### Employ a "mutual approach"

On campus governance: "I want to maintain a flexible approach on campus governance. I want to help create an environment conducive to mutual motivation. We must have a mutual approach to everything. Everybody has some input to give and we must tap all available sources. We must realize, though, that some will seek involvement and others won't want it."

He added, "If people want to fight, they don't need me. If they want to resolve problems, maybe I can help."

Jim Corson's academic career is varied and in depth. He graduated from the University of Pacific in 1927 and received his master's degree from the University of Southern California in 1936. He's also done graduate work at the Pacific School of Religion and the University of California and holds an honorary doctorate from his alma mater.

After the Olympics, athlete Jim Corson coached track at Modesto Junior College, then returned to Pacific where he progressed from Director of Health and Physical Education to Assistant Dean of Men, to Dean of Men to Dean of Student Personnel to Dean of the College. The latter position most closely resembles that of our vice president for academic affairs. He was also a vice president of Stockton Junior College which, at one time, was on the same grounds as University of Pacific. He took over as superintendent of the Modesto City School District in 1947, administering elementary, secondary, and college units until 1960 when he joined the California school administrators organization.

#### Alumni are special

The new president takes everything about a college seriously, but alumni are quite special, you can tell. He's loyal to his alma mater and appreciates the role of alumni in the development of an institution. "They can be supportive in interpreting and developing goals, but first they must know the goals." He sees alumni as important in aiding admissions, in telling the school's story, in providing outside information and attitudes to the campus, and in providing financial and other resources.

He proves his interest in alumni activities by his actions. He's the master of ceremonies for the 45th anniversary dinner of his class at Pacific on the same weekend as Willamette's homecoming and weekend for parents. At first, he was afraid his new position would force him to step out of the

Pacific get-together, but now it looks as though he can be here in the morning and afternoon, then fly to Stockton for his alumni gathering. "Willamette comes first. But, I'm the second bass in our old college quartet ('25-'27) scheduled to appear at the reunion, and I'm master of ceremonies. You can replace an M.C., but not the second bass of the quartet."

What does an ex-tackle and ex-trackman do when he can no longer throw halfbacks and discuss around? President Corson plays golf but hasn't had much time for it since 1960. His handicap used to be between 9 and 12. He thinks he'd probably shoot in the high 40's on his first effort at nine holes now, but probably could bring it down into the low 40's on the second nine. "Unless I didn't have a cart," he added, "Then I'd shoot worse on the second nine because I'd be tired."

He likes paddle ball, too. His stiff knee from a football injury makes it a bit difficult to move very fast, but he's somewhat ambidextrous and that helps. As he put it, "I'm ambidextrous. I can eat with both hands."

#### Likes the Oregon green

The President had never been to Salem before visits related to his coming to Willamette. "Salem reminds me of the valley cities in California — like

**"If people want to fight,  
they don't need me.  
If they want to resolve problems,  
maybe I can help."**

Stockton — except for the state buildings. Lots of shade trees and green. Solid citizens. Church-oriented people."

He hopes he and his wife, Dorothy, can find a little time to drive along the Columbia River, go up on Mt. Hood, and tour the coast once in awhile. He's found that his daughter and three sons are already planning to visit their parents in Oregon. The sons, all Methodist ministers, are enthusiastic fishermen and skiers. You might wonder how a longtime California views Oregon. "I like it. I like green. Green is fertility, growth. It's cool. When I was involved in school construction, I wanted to paint all the buildings green."

Jim Corson has been a college student, athlete, teacher, coach, dean, administrator — an all-around man. Asked to describe himself, he replied, "I'm the administrative type — get the job done."

As you listen to Jim Corson, one word keeps creeping into his statements: help. He's here to help Willamette or, as he sometimes phrases it (propping his leg on the desk), "to put a little hay in the barn." — Ralph Wright

## Dr. Fritz Joins Consulting Firm

Roger Fritz surveyed the barren presidential office and said, "I never knew it would be so difficult cleaning out an office after only three years."

He was looking forward to a vacation in Michigan with his wife, Katie, and two daughters. After that, it would be back to his native Illinois — and a new position.

Dr. Fritz is joining Robert E. Nelson Associates, Inc., a consulting firm to colleges and universities across the country. He'll live in Naperville, which is 12 miles from the Nelson offices in Elmhurst. Naperville is a far western suburb, 40 miles from downtown Chicago. The Fritzes have already purchased a home there.

With the Nelson firm, Dr. Fritz will serve present clients, develop new business, and establish contacts with corporations and public agencies seeking improved management programs and new relationships with higher education.

A former corporation executive, Dr. Fritz became Willamette's 16th president July 31, 1969. He succeeded G. Herbert Smith, who headed the University for 27 years. Dr. Fritz spent a short period with his successor, Interim President James H. Corson, who assumed duties July 6 and will serve until a permanent president is found.

## Dean of Students, Alumni Director Join WU Staff

Administrative vacancies at Willamette have all been filled, two permanently and four on an acting basis for the next year.

The permanent appointments are Larry D. Large, 31, Dean of Students, and John B. Simmons, 32, Director of Alumni Relations and Associate Director of Development. Dr. Paul M. Duell, professor of chemistry and department chairman, is the new acting Dean of the College of Liberal Arts. Dr. Larry K. Harvey and Dr. Richard H. Stewart were re-appointed as Acting Deans of Law and Music respectively for the year. Mrs. Walter (Bea) Blake will be Acting Director of Financial Aid.



**LARRY LARGE**

Dean Large, formerly Director of Financial Aid at the University of Oregon, succeeds E. Jerry Whipple who resigned his post of Vice President for Student Affairs last spring. Whipple is currently co-chairman of the Mark Hatfield for Senator campaign in Salem.

Large has been a student personnel administrator at the University of Oregon the past seven years. A 1964 graduate of Portland State, he holds a master's degree in history and higher education administration at Oregon and is currently completing his doctoral dissertation.

He comes highly recommended as an administrator with outstanding potential in the area of student personnel services," said Interim President Corson, "and the screening committee was impressed with his youth, vigor and enthusiasm."

Simmons, formerly Assistant to the Vice President for Public Relations and Development at Santa Clara, joins the staff after a year of study at the Willamette College of Law. He succeeds Roger Kirchner who is now completing work on his master's degree in political science.



**JOHN SIMMONS**

Simmons is a 1962 graduate of Stanford where he served as Assistant Sports Information Director for three years. He was SID at San Jose State College before becoming Assistant Director of Public Relations and Publications there from 1965-68 prior to his assignment at Santa Clara.

"John brings to the Willamette staff a wealth of experience in his fields at three major California universities. Willamette alumni will find him tuned to their needs for service and information. In addition, he will bolster our fund raising team," said Vice President for Development James S. Triolo.

Dr. Duell, a Willamette faculty member since 1957, was selected to serve as Acting Dean of Liberal Arts for one year while a permanent Dean is sought to fill the vacancy left by Dr. Byron Doenges in 1971. Dean Harvey replaced Arthur Custy and Dean Stewart replaced Charles Bestor last year. Both will continue as Acting Deans until permanent appointments are made.

Mrs. Blake, a secretary in the Financial Aid Office for several years, succeeds James Ryan on the student personnel staff.

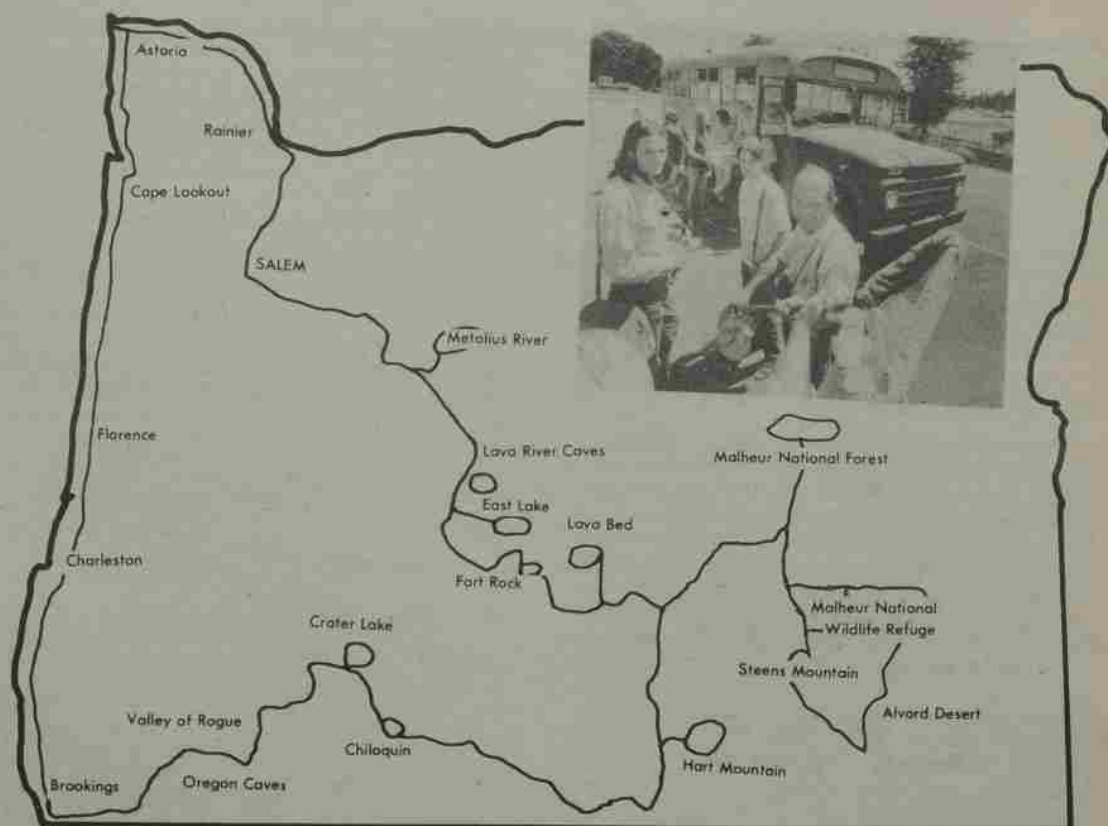
Former University Chaplain Phil Harder, whose position was terminated when funds were withdrawn from the chaplaincy, will serve at Southern Oregon College as a campus minister under the auspices of Cooperative Christian Ministry, an ecumenical group of six Christian denominations. The chaplaincy role at Willamette will be studied this coming year.



DISCUS DISCUSSION proves interesting for Editor Bob Woodle as Interim President Jim Corson shows him the discus he used in the 1928 Olympics to win a bronze medal for the U.S. with a throw of 154'8".

# OREGON WAS THEIR LABORATORY

*Environmental Field Studies Draws Raves from Students*



2,800 MILES of Oregon's environment enthralled 21 students who signed up for Willamette's first Environmental Field Studies Course this spring. The cover photo (inset) shows biology professor Don Breakey getting help with the camp and field equipment from John Wilson, Salem (left) and Matt Brink, Hillsboro, while others load food onto the University's Field Studies bus for the four-week study tour.

If Confucius hadn't said it 2500 years ago, the 21 Willamette students in the University's first post-session Environmental Field Studies course would have.

"I hear and I forget  
I see and I remember  
I do and I understand."

That was a summation of feelings of the group that heard, saw and did things on a four-week, 2800-mile study trek throughout Oregon with professors Don Breakey and Harry Rorman in late spring.

Designed as an investigation of types of ecosystems, the course relied mainly on natural phenomena and conditions rather than second hand methods of lecture, books and slides.

#### Biological and Geological Aspects

With Breakey, a biologist, and Rorman, an earth scientist, the group focused on the biological and geological aspects of Oregon's environment. "We also discussed and saw the consequences of the alteration of environments due to the activities of man," said Rorman, "and we explored some possible methods to retain or regain environmental balance."

While about half of the students are majors in the new Environmental Science field, others took the course out of personal interest in ecology and modern environmental problems.

After a four-day orientation to the trip which included some lectures, laboratories and short field trips to such local sites as a sewage disposal plant, mushroom farm, lumber mill and wildlife refuge, the EFS group packed their camping gear in the University's field studies bus and headed north-west.

The Trojan Nuclear Power Plant near St. Helens was one of the first stops as students viewed the facilities and questioned engineers. Following a visit to a private tree farm, the bus swung into Astoria for the first of eight nights on the Coast. As the group hop-scotched down to Brookings, camping in state parks along the way, they studied the vegetation, geologic formations and wildlife habitat. Typical stops were at wildlife refuges, fish hatcheries, marine stations (the research facilities of the Oregon Fish Commission and the Oregon Oyster Commission), lumber mills and other points of interest logged by Rorman who had previously traveled the entire route in two-weeks of preparation for the course.

Willamette alumnus Harold Poujade '70, a summer guide at the Oregon Caves, put his geology knowledge to work in a guided tour of the caves before the group headed further inland to Crater Lake and the Hart Mountain area north of Klamath Falls.

#### Survive Mosquito Attack

"We survived a mosquito attack at the Hart Mountain Refuge," said Breakey, "but only by re-

treating to an old Civilian Conservation Corps Building in Warner Valley."

Mosquitos were about the only villains on the entire trip, as the campers in five tents enjoyed rainless skies throughout the jaunt and ate well on just over \$1 per day per person.

Breakey was the commissary for the trip, stopping at super markets along the way to take advantage of specials to keep the food cost of the trip down. "You wouldn't believe all the oranges and

**"All of us not only learned much about the geology and ecology of Oregon—we learned how to go about studying these fields on our own."**

soda pop this group consumed," he exclaimed. One foray to a market in Burns led to four full baskets and \$120 worth of food. "The checkout girl didn't bat an eye, though, as she must be used to the big ranch purchases."

During the tailend of the trip, the group quartered at the Malheur Environmental Field Station in the Steen Mountain and Alvord Desert area. Willamette is a member of the consortium of 19 colleges which utilizes the facilities of the converted Job Corps center about 32 miles south of Burns in the Malheur National Wildlife Refuge.

#### Couldn't Help but Learn

As the course progressed, students frequently exclaimed that they couldn't help but learn something on the trip.

"Indeed, each day was a 16-hour learning experience. From the time Professor Rorman unceremoniously roused the camp at 6 a.m. to the evening campfire, there was a constant interchange of questions and answers; points of interest to visit and study; plants, animals and rocks to be pointed out and observed as well as short lectures while on the road; and review sessions at night," said junior Kathy Kaster.

Her reaction was typical. "I think all of us not only learned much about the geology and ecology of Oregon — we learned how to go about studying these fields on our own," commented Debbie Davis, a Willamette graduate from Walla Walla, Washington, who plans to enter graduate study at Idaho State University this fall.

Leslie Carpenter, a sophomore from Los Gatos, Calif., called the course "an exceptional educational experience."

#### Learned "How to Get Along"

The academic benefits weren't the only factors drawing praise. Senior John Wilson of Salem noted that "we all gained some insight into how to, and how not to, get along with all types of people."

Breakey seconded that notion. "This was an amazing group. By living together in close quarters, being responsible for handling the camp chores, cooking, cleanup, etc., we had to relate to each other much differently than in the usual classroom setting."

Rorman, a retired Lt. Commander in the Navy, had things so well organized that the group could be on the road within an hour and a quarter of reveille, giving them enough time to cook and eat breakfast and break camp. "For some of those who had never camped before, that was quite a feat," said Rorman.

The course cost each student \$250 for tuition and less than \$40 for food and lodging. By staying at state parks or field stations they were never more than two nights away from a shower.

#### Hawaii Next Year?

Upon their return to campus, a final examination was administered (all passed) and evaluation taken (very favorable). Students began asking about a similar course to a different area next year and were also enthused about seeking the same type of experience within some of the other University departments.

Rorman is working out arrangements for a possible Environmental Field Studies trek to the Island of Maui in Hawaii where he was stationed for

**"We all gained some insight into how to, and how not to, get along with all types of people."**

several years in the Navy. "It's a natural from the standpoint of viewing a variety of ecosystems, and I'm reasonably certain we could conduct a three-week course for less than \$450 per person including transportation," he said.

As the word gets around about the Oregon trip, the splendid preparation of Professors Breakey and Rorman, and the fun associated with learning of the environment first hand, an Hawaii venture might prove to be a popular lure to learning.

# WILLAMETTE ALUMNI BULLETIN BOARD



## SOMETHING NEW Parents - Alumni Weekend Oct. 20-22, 1972

(combining the best of Parents' Weekend & Homecoming)

- An opportunity to visit with Willamette's new Interim President James H. Corson
- A chance to renew old friendships
- Northwest Conference football game Willamette vs. Pacific Lutheran
- and much more

Mark your calendars now!

### Alumni Executive Board

#### Officers

Douglas G. Houser '57, Portland; President  
Stanley D. Ryals '49, La Canada, CA; President-Elect  
Sue Mellor Juba '52, Portland; Secretary  
Dale Gustafson '56, Portland; Past-President

#### Members - newly elected

Marge Lundahl Baum '51, Salem  
John P. Binford '63, Portland  
Eugene L. Lowe '49, Salem  
Marion Morange '30, Salem  
Julie Mellor Reid '55, San Marino, CA  
Sally Bove Koppel '63, Pullman, WA

### 1972 WILLAMETTE UNIVERSITY FOOTBALL SCHEDULE

Sept. 16	EASTERN WASHINGTON	SALEM	1:30
23	Chico State	Chico	7:30
30	COLLEGE OF IDAHO	SALEM	1:30
Oct. 7	Lewis & Clark	Portland	1:30
14	LINFIELD	SALEM	1:30
21	PACIFIC LUTHERAN	SALEM	1:30
28	Pacific	Forest Grove	1:30
Nov. 4	Whitman	Walla Walla	1:30
11	U. OF PUGET SOUND	SALEM	1:30

Plan to attend . . .

### WILLAMETTE FOOTBALL PREVIEW

With head coach Joe Schaffeld and members of the 1972 team

Friday, Oct. 6, 1972

### No-Host Stag Luncheon

Previewing the Willamette vs. Lewis & Clark game

King's Room, Imperial Hotel  
400 S.W. Broadway, Portland

### A Willamette Tradition

### Alumni Potlucks . . .

are being planned in the Portland area  
Tuesday, October 3

An informal opportunity for fellowship with Willamette friends, faculty and student leaders.

## Death Claims Prof. Douglas, Mrs. Morton Peck



Mrs. Morton E. Peck



Dr. James Douglas

Two people with many years of association with Willamette University died this spring.

**Mrs. Morton E. (Jessie) Peck**, widow of the former biology department head, passed away in May, and Dr. James Douglas, professor of English and American Studies, died in his sleep from a heart attack June 8.

Mrs. Peck was a former student of her husband at Ellsworth College. She married her professor in 1905 and formed a research team that led to the establishment of the Peck Herbarium at Willamette. The Herbarium now contains about 30,000 specimens about 95% of the plants species in Oregon, most of which were collected by the Pecks during their 50 years of association with Willamette. Dr. Peck died in December, 1959.

Willamette students of an earlier day well remember the return of Morton and Jessie Peck from their summer expeditions loaded down with plants, many of which represented species discovered and named by Professor Peck who authored the noted volume "A Manual of Higher Plants in Oregon."

Oliver Matthews '13, long-time friend of the Pecks, wrote in 1960 "in the summer of 1919 Prof. and Mrs. Peck hiked from the Columbia River to the Oregon-California border collecting specimens. They went across

Cape Lookout by following animal trails to the end. They had quite a time, but finally made it over the Cape to the beach. Mrs. Peck as well as her husband was an ardent outdoors fan and a great help to her husband in his field."

Life was a little less sophisticated in their tramping days and people looked with wonderment upon this happy pair wandering around with pressed flowers under their arms. Working conditions, too, were ideal for two people who loved all of nature. A soft breeze, a beautiful bird or a strange cloud formation were as wonderful to them as a new plant.

Dr. Douglas was a faculty member for 18 years, coming to Willamette from a teaching post at Gustavus Adolphus College in Minnesota in 1954. He received his Ph.D. in American Studies from Washington State University in 1970 and was chairman of the American Studies Concentration Area at the time of his death.

In addition to his teaching and service on many committees, Dr. Douglas was a musician with the Salem Community Symphony for several years and sang in the St. Mark Lutheran choir. He is survived by his wife Ruby and three children.

## Jason Editor Seeks Literary Contributions

Something new is being tried in the publication of the 1972-73 Jason, not only by making Willamette's annual arts magazine more representative of the university and its graduates, but also by making it available to the alumni, and hopefully even to the general public.

The Jason has, in the past, almost exclusively included writings, drawings and photographs by students, with an occasional piece by a faculty member. But working from the ideas that a university is a community and that graduation does not break any tie to the institution, this year's staff is making the Jason open to alumni, as well as students, faculty, staff and administration. The purpose is to make the Jason a truer representative of Willamette University.

In addition, to encourage the widest range of submissions the staff is also announcing the Jason Writing Contest. There will be some preference given to student works in publication, but quality must be the first priority and no preference will be given to any group, for the entries will be judged anonymously. All written submissions will be automatically entered in the contest, mixed media works that include writing will be entered upon request.

All written submissions, and mixed media works entered in the contest should be received by November 30, 1972.

Any number of poems will be accepted. Length for any individual poem should not exceed 200 lines. Short-short stories, short plays, play excerpts, essays, experimental modes and mixed media pieces should be a maximum of 1,200 words or four pages in length.

The first place winner will receive \$25; second place, \$10; third place, \$5.

Art submissions, photographs, mixed media and other entries should be addressed to Terry Berg in care of the Alumni office. Alumni who are interested in receiving the Jason should also write to Terry.

Poetry, stories, plays, essays and any other written submissions should be sent to Eric Nelson, c/o Alumni Office, Willamette University.

All submissions should be sent with self-addressed stamped envelopes unless there is no wish to have unused submissions returned.

# ALUMNI COMMENTARY

**Editor's Note:** Recent readership surveys of the WILLAMETTE SCENE among Alumni have been helpful. We appreciate the responses from Alumni who were selected at random. In addition to answering specific questions, several alumni took the time to offer written observations. We offer here some of the commentary from Alumni anonymously since we did not indicate that survey opinions would be published. Letters to the Editor should be signed, as is the following one we received on the April issue:

Dear Sir:

I especially enjoyed the April issue of the Alumni magazine. I always read the magazine, but the research articles especially appealed to me. The articles were both interesting and of varied interests. Enid F. Bolton '26, The Dalles.

## A First Opinion

This is the first time WU has ever asked my opinion about anything — even if you don't listen, it does make me feel important! Alum '45. (We were glad to do it — and thanks for responding.)

## Explain Permissiveness

I would like to see comment on and explanation of the permissiveness on the campus. One wonders why the most liberal students are permitted to set the standards. It used to be that Willamette dared to be different from the ordinary college. Alum '34 (Some definitions might be in order, but you've raised a point that perhaps needs to be clarified for concerned alumni in a future issue of the Scene).

## Keeping in Touch

I enjoy reading the WILLAMETTE SCENE very much. I feel it gives me the opportunity to keep in touch with Willamette, even if only from a distance. I especially enjoyed the April, 1972 article "A Month to Remember." The article presented the Fritz controversy most objectively—something our local newspapers often find difficult to do! ALUM '71

## Avoid Credibility Gap

(I would like to see you cover) subjects — especially controversies involving Willamette — as they happen. I refer specifically to Fritz' presidency. There was dissatisfaction with him the year after I graduated but this never came to the attention of Alumni in print until the last issue of the WILLAMETTE SCENE came out. I was aware of the problems on campus because undergraduates kept me informed.

Any effort the school makes to either avoid or understate an issue will only create a credibility gap for the Alumni who are aware of what's going on. And that doesn't help the school's image.

I am not concerned with format of the SCENE — only full coverage of what's happening on campus and why.

(I did really appreciate the publication of student poetry and art). ALUM '70.

## Short Changed

I sometimes feel that I do not receive all the copies of the Willamette Scene that are published during the year. Whereas the front of the magazine states that it should have been published six times so far this year, I have only received two issues. Maybe all these are not sent to alumni; I would appreciate knowing if this is the case. I enjoy each issue immensely. Please keep up the good work. ALUM '68 (Sorry for the confusion. The Scene is published as a tabloid or magazine for all alumni four times a year, January, April, July and October. The Scene is published as a calendar of events for the campus community seven times, January, February, March, April, September, October and November. We hope to expand the calendar Scene to Alumni in the greater Salem-Portland area starting in September. If you guessed that we have this confusing schedule because of postal savings (second class), you're right.)

## Caught by Surprise

I look to the Willamette Scene for information about Willamette University — its faculty, its students, its current philosophy. I think the institutional articles to which you subscribe are too much emphasized. At least, they seem to overshadow the Willamette news that I like to read about.

The Fritz termination article caught me by surprise. I'm not in close communication with Willamette's day-to-day life, just as, I'm sure, many other Alumni are not. Perhaps this item brought home to me again that college alumni "slicks" are often not doing what I feel they ought — keeping the grads informed about the University as well as the alumni. ALUM '57.

## Favorably Impressed

I'd like to say that I have been most favorably impressed by the recent literature I've received (the last couple of years). Particularly, the issue "Black-White Uptight" stands out in my mind. In general, however, I'd like to compliment your choice of subjects and the seriousness with which you attack the matter.

I feel much more aware of and have a better understanding of the Willamette campus than I do of the University of Texas, my other alma mater, and this is true in spite of my proximity to UT. Please keep up the good work! ALUM '62.

## "A Serious Warning"

From long before my entrance to Willamette I have found interest in current problems, and even now am better acquainted with the challenges facing humanity than the average person. So to me, much of the review of college problems in general had already been read before the Willamette Scene came. Perhaps my opinion is not identical with other alumni.

I believe the recent furor over the President is a serious warning that Liberal Arts Colleges should weigh their relation to today's needs very seriously.

Apparently both students and faculty were unhappy to a volatile point. If the faculty is moved by desire to remain as in the past, that may need some soul searching. The private college may need to adapt to change however a teacher has taught in the past; and the students need more awareness of their place in a world such as ours which is full of problems, and which will not be solved by blaming those in power now. Mistakes have been made, but the situation is not hopeless.

At present the number applying for college is down some 100,000 vacancies over the previous year. There is delusion with degrees as open door to jobs. There is growing recognition of the value of vocational training.



All these are forces to be recognized.

What constitutes a good education is changing. If Willamette is to serve today it too must be willing to adapt. Faculty, students, parents, alums, trustees must all be willing to change curriculum where needed.

What do I consider basic?

- faith in God's good will for us all,
- a thorough knowledge of English, for education goes on and on and on,
- a deep grasp of history without which we panic over new challenges,
- a sound training to make a living and to adapt to changes, for few will live a complete life in one niche.

The first three essentials will be required of all students; but the job training is designed after careful study of needs for workers versus any old notion that vacancies exist when actually that field is over-supplied. And a far more careful evaluation of individual aptitudes should be basic to counseling.

With my very best wishes to you who are in the business of liberal arts education. ALUM '25.

## Put Pieces Together

I'm an alumna of several universities, all going through various stages of change, all very different from my college days. What I find most absorbing in their alumni reporting is their accounts of meeting the challenges these changes have brought.

The most interesting article of recent years from Willamette was the report of the controversy over President Fritz. Next was the report of the Black students' confrontation. The article on President Fritz raised many of the questions that college administrations and trustees, regents, and overseers face — questions that alumni also need to consider.

One of the questions that wasn't raised in that article was that of sources of support. Willamette has been both fortunate and I think hampered by having a few devoted and wealthy alumni who remove the responsibility for support from the rest of us. Is this a subject that could be discussed — impersonally and constructively?

I'd also like to read another article (as objective as the Fritz article) on what it has meant at Willamette to change from a homogeneous, nearly all-white, middle class student body to one that's somewhat more mixed. I'd like to know about this and other changes.

On the whole, however, I think you're doing a good job of keeping us informed — I'd just like to have the pieces put together for me. ALUM '34.

## "Wake Up!"

WU does it again! Why not catch up with what is going on in the world!! Unless you're going to baby sit for the first time of student discussed by the German prof (student who uses study abroad as an escape) cancel the (Study Abroad) program. After spending the last ten months in Europe I feel very strongly against the "groupie" Americans (at a university). They're a mockery if the intent is to become involved in another culture. WAKE UP!! ALUM '68.

## Tabloid "Great Idea"

It was news to me that you were featuring the tabloid in the local newspapers. I think that is a great idea. In the seven years I was a student at Willamette, it appeared that little or nothing was done to cultivate Salem & Valley people to the University. The impression was that both took the other for granted. ALUM '56, LAW '66.

## ART MIX-UP

A lithograph by David Wm. Hansen '65 that appeared in the April Willamette Scene was erroneously credited to Don Spears '71. Our apologies to Hansen who was pleased that work done in 1964 would pass for student creativity in 1972. Hansen is now at the Dept. of Landscape Architecture at the University of California at Berkeley.

# Campus Lauds Dr. Chester Luther Upon Retirement

Willamette won't forget Chester Luther.

The teaching career of this much-revered mathematics professor came to an end this spring, but the memory of his influence upon the lives of countless students and associates will be lasting.

Often referred to as "the professor's professor," Dr. Luther followed well the footsteps of the legendary James T. Matthews whose endowed chair Luther occupied for 36 years in the mathematics department. Matthews was regarded as the "Mr. Chips" of the Willamette community. "Dr. Luther has continued the Matthews tradition," said Robert Notson, publisher of *The Oregonian* in a special tribute address. "Education is more than learning to handle facts and figures. It is learning how to live. Dr. Luther's personality and example have been as important as his instruction in shaping the lives of his students," said Notson.

Notson's remarks were among the many expressions of tribute during four separate occasions acknowledging the retirement of Dr. Luther.

## Columbia University pays tribute

Columbia University joined in the first tribute to Luther and his wife Helen. Engineering School Dean Wesley J. Hennessy and Prof. Emeritus Frank H. Lee of Columbia attended Willamette's annual faculty banquet to honor Dr. Luther. They gave him a lion statuette and a special scroll in recognition of his "extraordinary contributions made to engineering education" during the 18 years Dr. Luther served as Willamette's liaison officer in a combined degree program with Columbia. The faculty wives club presented the Luthers with a painting by Willamette artist-in-residence Carl Hall.

During commencement weekend May 13-14, some 180 alumni and friends attended a Luther Tribute Luncheon at which time announcement was made of the establishment of the Chester F. Luther Award in Mathematics. The award, endowed by over \$3,000 from friends and former students of Dr. Luther, will be given annually to an outstanding mathematics major.

The Luthers also received some luggage and \$500 for a trip of their choosing, and a bound volume of letters from former students.

At the Alumni Banquet May 13, Dr. Luther presented the James T. Matthews Medallions to members of the 50th and 25th reunion classes present. Outgoing president Dale Gustafson of the Alumni Association then announced Alumni Board action seeking the establishment of the Chester F. Luther Medallion which would be presented to alumni attending their 25th reunion. This request must meet Board of Trustee approval. Matthews Medallions would still be given to 50th reunion celebrants.

## Luther "a great teacher"

A standing ovation from 4,000 people at Commencement accompanied the presentation of Luther's Professor Emeritus diploma to cap the Willamette tribute to this highly respected and much loved professor.



THE MASTER AT WORK, Dr. Chester Luther draws the rapt attention of his pupils, something he did for 36 years in mathematics classes. His blackboard mannerisms were superb, and one former student said "I'll never forget the perfect circles he could draw on the blackboard free hand."

## What makes Dr. Luther so special?

The answer is almost universal. He is a great teacher. Mrs. Owen (Peggy Schaeffer) White '68 said at the tribute luncheon, "He was such an excellent teacher that I even learned things from his tests. I've thought of you often in my teaching attempts and I can say you have made a difference in my life."

Mr. Notson captured this feeling by many former students when he said to the assembled former students, "You have been drawn to this luncheon not so much because Dr. Luther taught you how to solve mathematical problems, but because he taught you how to live—to tackle life's problems and solve them."

One of Luther's colleagues, associate professor of math Jack Hafferkamp, said he had been told that "Dr. Luther can teach math to a rock. I believe that now, because I've seen some sitting in his office!"

Hafferkamp said, "Chester is unsurpassed as a teacher. He's always prepared . . . cares about his students, his colleagues, and the University . . . inspires self confidence . . . is always willing to listen . . . and his drawings on the blackboard are fabulous."

Dr. Walter Wilson, '56 physicist for Battelle-Northwest Laboratories in Richland, Wash. and master of ceremonies for the luncheon, said, "I'll never forget the perfect circles he could draw on the blackboard free hand." Dr. Robert Dean '42, who "tried to follow his footsteps for 30 years" as professor of math at Central Washington State College concurred, exclaiming "His blackboard mannerisms have to be seen!"

## Gave up administrative duties

Dr. Luther's love for the classroom was evident early in his Willamette career. After earning his A.B., M.A. and Ph.D. degrees at Stanford, and teaching there, for eight years, he came to Willamette as associate professor in 1936. A year later he was a full professor. During the difficult time of the War years, Dr. Luther was tapped for administrative duties as Dean of the College of Liberal Arts. But in 1946 he asked President G. Herbert Smith to relieve him of administrative duties so he could return to full time teaching.

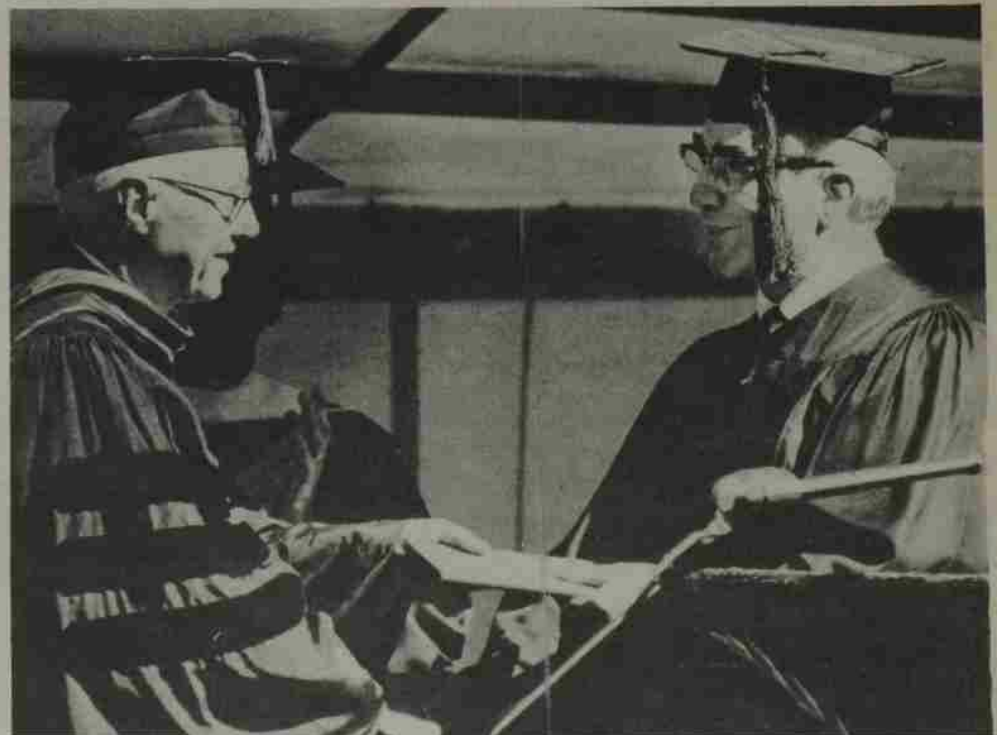
In a letter to Smith he said "my deepest regret is that I have disappointed you in your expressed hope that I would come to like administrative work to the same degree as teaching. But as you know, my interest and enthusiasm is in teaching and these six years as Dean, on a background of 19 years of teaching, have confirmed by belief that for me the added prestige, salary and authority of the administrator cannot hold a candle to the rewards of the teacher . . ."

Dr. Smith reluctantly granted the request and said, "Our only satisfaction comes in the fact that Dr. Luther will be free to devote more time to his teaching at which he is a master. Our loss in the field of administration will be the University's gain in the classroom and that is the heart of the University program."

Over 300 graduate majors and hundreds of other Willamette students would have to concur that Luther's full-time return to the classroom was their personal gain, and a part of Willamette they will never forget.



FLANKED by a surprised Mrs. Luther, Dr. Luther shows the check for \$500 provided by former students as travel money for the start of Luther's retirement. Former students and friends also endowed a Chester F. Luther Award in Mathematics with over \$3,000, gave him new luggage and a bound volume of letters in tribute. Peggy Schaeffer White '68 and Jerry Whipple, left, offered tribute ad-



dresses at the alumni luncheon honoring the Luthers. At right, Vice Chairman of the Board of Trustees Warne Nunn '41 presents Dr. Luther with his Professor Emeritus citation at Commencement ceremonies.

# CLASS NOTES

## 1907

**GEORGE AND ALMA HALES HUNT** are back in their home of 49 years after several out-of-the-country trips since 1923. The Hunts lived in Europe in the 20's while he studied wood utilization processes; in 1953, under auspices of the United Nations, in Austria, from 1954-61, in the Philippines and Taiwan for the U.N.; and in the 1960s, spent several years working for the Venezuelan government at the University of the Andes in Merida. Address: 129 Bascom Place, Madison, Wisconsin 53715.

**EDWARD J. WINANS** is retired and living at 570 West 8th Street, Claremont, Calif. 91711. His grandson, David Randolph Winans, is a sophomore music major at Willamette, from Whittier, Calif.

## 1910

**CYNTHIA HORNIBROOK BOWDEN**, 104 S. Palouse Street, Walla Walla, Wash. 99362, writes that she would love to hear from surviving members of the Class of 1910.

## 1913

**WILLIAM SCHREIBER** is living in San Diego, Calif. at 4237 Orchard Avenue. He hopes Willamette friends from the Class of 1913 will call him at 222-9227.

## 1916

**HAZEL SMITH MARSH** (Mrs. Arthur) has left the Marsh Ranch in Lookingglass in the care of her son, George Marsh and has moved to the Forest Glen Senior Residence in Canyonville, Ore. 97417.

**DR. GEORGE ODGERS** and wife Cora are living at the Friendship Manor in Newberg, Ore. 97132.

## 1921

**BERNARD AND GLADYS CROZER MORSE** are living in Boise, Idaho, with their daughter, Mrs. Isolo Mae Conleton, 6728 Fairview Avenue.

## 1922

**HUGH A. DONEY** has retired and resides at 236 Del Mesa Carmel, Carmel, Calif. 93921.

## 1924

**CHARLES H. ELREY** (L) recently retired as Area Director (Hollywood) for the U.S. Dept. of Labor and is now in Portland at 3103 N.E. 37th Avenue.

## 1925

**JUANITA HENRY MOLL** (Mrs. W.K.) is back in Pocatello, Idaho after vacationing for four months in California and Arizona. Her Idaho address is Route 1, Box 396.

**LOLA MILLARD OSBORNE** (Mrs. R. E.) and her husband are living at Willamette View Manor — 12706 S.E. River Road, Apt. 305, Portland, Oregon 97266.

**NEVA COOLEY MUNDINGER** has retired after 22 years of teaching in Salem, Ore. and Inglewood, Calif. Now lives at the P.E.O. Retirement Home at Alhambra, Calif.

## 1926

**GERALDINE COOK DOTSON** (Mrs. Leland) has retired from teaching at Hood River and is living

with her daughter who teaches in the U.S.A.F. Dependents School in England. Address: Box 552, APO New York 08378.

**WILLA STOLLAR CORE** has retired and is spending her time traveling by motorhome. Address: Mossy Rock, Wash. 98564.

**MILDRED TUCKER DUNCAN** (Mrs. Lewis E.) has retired from teaching and lives in Mossy Rock, Wash. 98564.

**C. GILBERT AND KATHLEEN LA RUAT WRENN '24** are back in the states after spending three months traveling and lecturing at the University of Natal in Durban, South Africa. Recently, Wrenn represented Willamette at the inauguration of President Schwada at Arizona State University at Tempe. Address: 2967 Country Club Way, Tempe, Ariz. 85282.

## 1927

**THOMAS R. ROE** and his wife, the former **RUTH STEWART**, '19 are grandparents for the first time; a boy, John Thomas Roe. The Roes live in Gaston, Ore. 97119.

**ORLAND and MARIAN WYATT CHELDELIN '25** spend their retirement winters in San Diego and the summers at Rt. 2, Box 629, Nyssa, Ore.

**HAZEL R. NEWHOUSE** has retired from teaching geography at Gresham High School and plans to travel later this year. Address: 4709 N. Willamette Blvd., Portland 97203.

**LETHA MILLER MOORLAND** (Mrs. Albert) was on campus in May for her 45th Class Reunion. She has never missed a reunion. Address: 33 Chabot Terrace, San Francisco, Calif. 94118.

## 1929

**BEATRICE LOCKHART BLISS** (Mrs. Jackson) has authored a new book, "The Reluctant Pioneer," based on the story of the 1852 immigration along the Oregon Trail. Address: 620 Sky Lane, Forest Grove, Ore. 97116.

**THE REV. EVERETT and LOISE BENJAMIN GARDNER '30** are living at 2215 Wygant Street in Portland, Ore. 97217 following his retirement after 44 years as a United Methodist minister in Oregon and Southern Idaho.

## 1930

**WENDELL M. KECK'S** book, "Great Basin Station — Sixty Years of Progress in Range and Watershed Research," is now being distributed on request by the Intermountain Forest and Range Experiment Station (U.S. Forest Service) in Ogden, Utah. The official history of the first Forest Service Experiment Station was requested by the Dept. of Agriculture. Photos in the publication were taken by Dr. Keck, who lives with his wife, the former **CAROLYN WILSON '24**, at 1379 28th in Ogden, Utah 84403.

**KENNETH H. MOSHER** writes that he was an official U.S. observer at the meetings of the International Council of Exploration of the Sea held last fall in Helsinki, Finland. Address: 2640 N.E. 82nd Street, Seattle, Wash. 98105.

**WILLIAM W. MUMFORD** has retired from Bell Telephone Laboratories after 40 years of service and is the newly-appointed Adjunct Associate Professor of Environmental Medicine at New York University Medical Center, Institute of Environmental Medicine. Address: 4 Craydon Street, Morris Plains, N.J. 07950.

**ALVINA BREITHAUP TROMSON** (Mrs. Howard) is traveling in

Germany with her husband and visiting son and family in Furtwangen, where the younger Thomson is a Fulbright exchange teacher. Address: 277 Farnum Street, North Andover, Maryland 01345.

## 1932

**DOROTHY WELSH OLIVERSON** is a housewife and resides with her retired husband at 2796 Williams Hwy., Grants Pass.

**WALTER R. WARNER** has retired as a full-time minister of the United Methodist Church and is now serving as part-time assistant pastor of the First United Methodist Church, Beaverton, Oregon. Address: Rose Villa, 13566 S.E. River Road, Apt. 252, Portland, Ore. 97222.

**HAYES BEALL** was recently elected to the Board of the Oregon United Nations Association and the Board of the Oregon Consumer League. He is also serving as Marion County Chairman of the McGovern for President Campaign. Beall and his wife, **SARAH DARK BEALL** live at 3825 Helen Avenue SE, Salem, Ore. 97302.

**MARVELLE EDWARDS MEFORD** (Mrs. W. R.) writes that her husband Russell, who is executive director of Rose Villa Retirement Residence, has just completed two terms as president of the Oregon Association of Retirement Services (OARS). Rose Villa, Inc. is sponsored by the Methodist and American Baptist churches. Address: 1455 S.E. Denny Avenue, Portland, Ore. 97222.

**MARGERY HANNAH** just completed her fourth year as first vice president of the Virginia Division of the American Association of University Women (AAUW). She is employed as an engineer by NASA Aerospace. Address: 138 Yeardeley Drive, Newport News, Virginia 23601.

**MARSHALL W. HARTLEY** has retired from the Goodyear Tire Company and is building a home on the West Beach of Whidbey Island in Washington. Address: P.O. Box 392, Oak Harbor, Wash. 98277.

**PERRY N. SPELBRINK** is in his 40th year of teaching chemistry at South Salem High School and plans three more years of teaching before his retirement. Address: 2828 74th Avenue S.E., Salem, Ore. 97301.

## 1934



Dr. Hillway

**DR. TYRUS HILLWAY** recently was named the first recipient of the Distinguished Scholar Award at the University of Northern Colorado, where he has been a faculty member since 1951. Dr. Hillway, currently the director of administrative publications and special projects and professor of higher education, was honored with an award, a plaque and honorarium of \$500 by the Greeley Chamber of Commerce and the Faculty Research and Publications Committee at NUC. Address: University of Northern Colorado, Greeley, Colo.

## 1935

**ROBERT E. EYRE** is the director of Facilities and Operations at Santa Barbara City College in Santa Barbara, Calif. Eyre and his wife Fern have a daughter Virginia, who lives in Salem with spouse, **ROBERT McCONVILLE '55**. Eyres' address: 775 Oak Grove Drive, Santa Barbara, Calif. 93108.

## 1936

**DONALD JOHN EGR** has retired after more than 30 years service with the U.S. Dept. of Agriculture and has moved from Prairie Village, Kansas to Oregon City, Oregon with his wife Helen.

**HAROLD P. and ANNA UNRATH HOYT '37** are in Corvallis, Ore., where he is a professor with the Division of Continuing Education, Oregon State System of Higher Education and assistant director of Community College Relations. Address: 815 Merrie Drive, Corvallis, Ore. 97330.

106 willamette university class notes

## 1937

**DR. WILFRED C. SUTTON** writes that he recently served two, three-month periods with the World Health Organization in South East Asia as a school health education consultant. Address: 1820 Merridy, Northridge, Calif. 91324.

## 1938

**GEORGE McLEOD** (L) recently completed his 25th year of practice as an attorney working with the law firm of Koford, McLeod and Koford in Oakland, Calif. and another firm in San Francisco. Address: 85 Parkside, Berkeley, Calif.

## 1939

**ERNEST D. MOSIER** is the sheriff in Wasco County and resides at 300 W. 21st Street, The Dalles, Oregon.

**SUZANNE CURTIS SHEPPERD** (Mrs. George) continues to teach at Gresham High School and a Latin course at Mt. Hood Community College while her daughter, **ROSEMARY SHEPPERD '73**, attends Willamette as a senior, environmental science major. Mrs. Shepperd will travel in Europe this summer seeking source material for her World History classes. Address: 1100 N.W. 8th, Gresham, Ore. 97030.

**MARTHA HERMANN WHITE** (Mrs. L.A.) is teaching in Sacramento County, Citrus Heights, Calif., and has two children **CHUCK WHITE '72** and **RUTHANNE WHITE '75**. Mrs. White's husband, Larry, is the vice principal of San Juan High School in Citrus Heights. Address: 7628 Northridge Drive, Citrus Heights, Calif. 95610.

## 1940

**DR. RONALD K. ADAMS** is the vice president of the Western Region of the National Securities and Research Corporation in San Francisco. Address: 55 West 5th Avenue, San Mateo, Calif. 94402.

**JESSICA KINSEY COREY** is a bookkeeper for the Title Insurance Company in Boise, Idaho. Address: 2256 Hervey, Boise, Ida. 83705.

**ESTHER CAMMACK RAND** (Mrs. Howard) is a teacher at Lawton Elementary in Seattle, Wash., where she has taught in the school system for 17 years. Rand is a contractor-builder under the name of Rand's Woodcraft. Address: 815 W. Argand, Seattle, Wash. 98119.

**DR. ROBERT KEUSCHER** is the director of School Services for the International Center for Educational Development located in Encino, Calif. Address: 1114 23rd Street, Santa Monica, Calif. 90403.

**LOIS HERMAN WHALIN** (Mrs. Donald) writes that Willamette now has three Whalins on their alumni list: her daughters **CHARLOTTE WHALIN '72** and **BARBARA WHALIN '66**, who is a teacher of the deaf at the Tucker-Maxon Oral School in Portland, and herself. Her husband Donald is currently serving as president of his firm, Realestators, Inc., and of the Medford Board of Realtors. Address: 300 Windsor, Medford, Ore. 97501.

## 1941

**JAMES and MARGARET TAYLOR ANDERSON** write that their son **BRET ANDERSON '68** has returned to the Peace Corps for another year of teaching... this time in West Malaysia. En route, the younger Anderson was the guest of Infant Schools in Great Britain and will report on his experiences there for the West Malaysian Government. Andersons' address: Route 9 W. Palisades, N.Y. 10964.

## 1944

**CHARLOTTE MILLER WIRT** is a clerk for the City of Portland Water Bureau. Address: 1314 S.E. Birch Street, Portland, Ore. 97214.

**MARJORIE MAULDING COUGHANOUR**, a school librarian at Jordan Junior High School in Palo Alto, Calif., and another Willamette graduate **DAVID JOHNSON '57** have been on the Jordan teaching staff for over 10 years. Coughanour address: 918 Linda Vista Way, Los Altos, Calif. 94022.

**MARY ANNE OWEN KORTMEYER** (Mrs. Henry) has moved back to 3133 San Luis Drive in Colorado Springs, Colo. 80909 following her husband's retirement from the U.S. Air Force. Kortmeyer is now with ISI Sales Corporation selling Mutual Funds and Life Insurance.

## 1945

**DAVID FREES** is the manager of Service Facilities Planning Properties for Pan American Airways at the Kennedy International Airport in Jamaica, N.Y. Address: 3067 Shore Road, Bellmore, N.Y. 11710.

**EUNICE MASSEE DAVIS** (Mrs. B. Homer) lives at Route 3, Box 217, Junction City, Ore. 97448 and is a rural mail carrier.

**MARIAN IONE CARTER SHOWERS** (Mrs. Lyle) is now serving as project coordinator for a circuit course under the Oregon Regional Medical Programs. Address: 2845 S.W. Boundary Street, Portland, Ore. 97201.

**YVONNE MOZEE** is the public information officer for the City-Borough of Juneau and recently had a two-man photo show with another Alaskan photographer at the Alaska State Museum in Juneau. Address: 361 Distin, North 107, Juneau, Alaska 99801.

## 1946

**R. DALE HUNSAKER, M.D.** is the deputy director of the Bureau of Community Health Services, Division of Health, for the State of Wisconsin. He also is the chief of the section of material and child health. Address: P.O. Box 1383, Madison, Wis.

## 1947

**CAROLA HAYS MINAR** (Mrs. Davis W.) writes that her husband is the chairman of the political science department at Northwestern University in Evanston, Ill. Address: 245 Greenleaf, Wilmette, Illinois 60091.

## 1948

**KATHERINE SCHISSLER MORRISON** is a secretary for Lehman Brothers, Inc. in New York City. Address: 12 Arlington Avenue, Croton-on-Hudson, New York 10520.

**HOWARD T. EDSON, JR.** has two jobs depending on the season: this summer, Edson owns and operates Sportsman's Tackle Shop and Blitz Charter Service in Winchester Bay, Ore. and in the winter he is a teacher and coach at Reedsport High School. Address: 721 Crestview Drive, Reedsport, Ore. 97467.

**STEPHEN J. FOUCHER** (L) is a broker for Fouchek Realtors in McAllen, Texas, where he resides at 1266 Highland.

**DR. QUENTIN F. SCHENK** is a professor of social work at the School of Social Welfare at the University of Wisconsin in Milwaukee. Address: 212 E. Wurthmann, Cedarburg, Wis. 53012.

**MARIAN McCLAIN RAK** works on her own farm in Newberg, Ore.

## CLASS NOTE GUIDELINES

In order to assure accurate, up-to-date information in the Class Notes section of the Willamette Scene, specific guidelines must be followed:

- All material must be legible—typed or printed is best.
- Include complete names (maiden & spouse for women and initials and spouse for men).
- Always list class year.
- Indicate which position belongs to which member of the household (i.e. wife is secretary, husband is insurance agent).
- Date all correspondence sent to the Alumni Office.
- Birth and wedding announcements should be submitted within six months of the event.
- Photographs must be black and white, glossy or mat finish.

Address: Route 3, Box 261, Newberg, Ore. 97132.

**DOROTHY DEAL WELLS** (Mrs. John E.) is chairman of the art department at Las Lomas High School in Walnut Creek, Calif. and her husband John is a counselor at the same school. Address: 2101 Ridge-wood Road, Alamo, Calif. 94507.

## 1949

**J. DAVID and KAY STARK BRISTOW '51** reside in Portland, where he was recently named to the Laurence Selling Chair of Medicine at the University of Oregon Medical School. He is chairman of the department of medicine at the school. Address: 7311 S.W. Hunt Club Lane, Portland 97223.

**STANLEY D. RYALS** is the newly-appointed vice president and manager of the Western Regional Office of the Standard & Poor's Counseling Corporation of New York. He also is the current national chairman of Willamette's Alumni Loyalty Fund program for 1971-72 and was elected president-elect of the Willamette University Alumni Association in May. Ryals will serve as president-elect for two years and will succeed Douglas Houser, Portland, as president in 1974. Address: 924 Chehalism Road, La Canada, Calif. 91011.

**CARL and JEAN WEBB-BOWEN HULTENBERG '46** are living at 2073 McLoughlin, San Jose, Calif. He is vice president of the Ro-Lab, Inc. in Newark, Calif.

**DONA ADAMS ROTHWELL** (Mrs. Michael) has been working in public relations for the past two years while her husband is an engineer with the Bechtel Corporation in San Francisco. They have two children in high school and a son, Geoff, 18, who is an exchange student in Le Havre, France. Address: 141 Natalie Drive, Moraga, Calif. 94556.

**NASEEB and RUTH HILDEBRANDT MALOUF '45** live in Homewood, Calif. and he is an assistant professor at Sacramento State College. Address: P.O. Box 282, Homewood, Calif. 95618.

**GWEN HARPER** is the director of Program Development of the Camp Fire Girls, Inc. in New York City. Address: 16 West 16th Street, Apt. PHFN, New York City, N.Y. 10011.

**LTC. CHARLES CRECELIOUS** is presently assigned as a Senior Intelligence Director with the North American Air Defense Command. Address: 490 Selfridge Drive, Colorado Springs, Colo. 80916.

## 1950

**EDWARD P. REED** (L) writes that three out of four Superior Court Judges in the Clark County Court House in Vancouver, Wash. are Willamette University graduates including himself, **ROBERT DALE McMULLEN** (L '49); and **JOHN (NICK) SKIMAS** (L '50). Business address: Clark County Court House, Vancouver, Wash. 98660.

**RONALD E. OLSEN** is in financing for the C.I.T. Corporation in Portland. Address: 4057 S.W. Virginia Way, Lake Oswego, Ore. 97034.

**DR. JOSEPH BRAZIE** is a professor of pediatrics and head of the

Newborn Medicine section at the Rush-Presbyterian - St. Luke's Hospital in Chicago, Illinois. Address: 400 West Touhy, Apt. 95, Des Plaines, Ill. 60018.

**ROBERT O. ROBERTSON** is the new parks superintendent for the City of Anchorage, Alaska. Address: 734 W. 8th, Apt. 3, Anchorage, Alaska.

**COL. WILLIAM PROSS OLSEN** has returned to the states after a year's tour of duty in Vietnam. His wife, **GERALDINE BOWLES OLSEN**, and their daughter, Greer, were living in San Antonio, Texas during his absence and now all three have moved to Virginia. Col. Olsen has been assigned to the Pentagon as Chief of Intelligence Data Handling. Address: 10209 Tamarack Drive, Vienna, Virginia 22180.

**MARGARET SIMPSON LAWRENCE** recently had a one-woman show of paintings in the Willamette University Fine Arts Gallery. Address: 696 Breys Avenue N.E., Salem, Ore. 97301.

## 1951

**ROBERT G. TAYLOR** owns a sports shop in Coquille, Ore. Address: Box 723, Coquille.

**COL. LEONARD J. McCOY** has retired from the U.S. Army and is now the assistant project director for Synoptic Systems Corporation, Western Operations Division in San Francisco. Address: 1065 Palm Avenue, Seaside, Calif. 93855.

**PHILIP L. PHIPPS** is the manager of Signal Processing at UNIVAC in St. Paul, Minn. Address: 391 W. Wentworth, St. Paul, Minn. 55118.

**THE REV. DAVID and MARIAN SAYRE POINDEXTER** write that he attended the U.N. Conference on Environment in Stockholm, Sweden, June 3-17. The Population Communication Center, of which Rev. Poindexter is the director, sponsored a lecture series for delegates featuring well-known world citizens on environmental problems. Address: 10 Cottage Place, Cresskill, N.J. 07626.

## 1952

**DELMAN R. ASHER** is a chemist in Midland, Michigan, where he lives at 4006 E. St. Andrews.

**CHARLES and NEVA GILMAN ANDRUS** '57 recently moved from the Tacoma, Wash. area where she was with Weyerhaeuser Company and now live in Sherwood, Ore. Andrus is the manager of cost accounting for Evans Products in Portland. Address: 21650 S.W. Pacific Hwy, Sherwood, Ore. 97140.

**LTC. ROBERT L. GRAHAM** has completed his Masters of Science degree in engineering at the University of Washington, Seattle, and is currently attending the Defense Systems Management School. Address: 7123 Loisland Road, Springfield, Ka. 22150.

**GLORIA NANDIE BIBBENS** is substitute teaching and Title I tutoring in California. Address: Rt. 1, Box 140, Oak Run, Calif. 96069.

**MARK F. and JANE PINKERTON COTTON** '53 live in Portland, where he is starting his 10th year as head track coach at Grant High School. Cotton is the 1970 Track Coach of the Year for District 8, National High School Athletic Coaches Association. Address: 3214 N.E. 40th, Portland, Ore. 97212.

**PHILIP A. SHAW** is teaching physics in Edinburgh, Scotland at one of the city's traditional selective high schools. "Having the top academically chosen pupils, all on a college prep course, has been the most challenging educating I've ever done," he writes. Address: 20 Hamilton Drive West, Edinburgh 15, Scotland.

**DOROTHY CASPAR MURPHY** (Mrs. Kenneth) has moved to Florida with her husband and four children. Her husband is chief of the Reserve Division, Seventh Coast Guard District, Miami. Address: 14502 S.W. 92nd Ct., Miami, Florida 33156.

## 1953

**THE REV. JACK L. KIEKEL** is a Ph. D. candidate at the University of Oregon and a minister at the Emerald Baptist Church in Eugene, Ore. Address: 1000 First Place, Springfield, Ore. 97477.

**CDR KEITH D. LAURENCE** (L56) JAGC, USN, is presently serving with the U.S. Navy in New York City as the Staff Judge Advocate for the Third Naval District. Address: JAGC, U.S.N. Staff Headquarters, Third Naval District, 90 Church Street, New York, N.Y. 10007.

**GLORIA SPENCER CROWSON** (Mrs. Don) has moved to Virginia where her husband was transferred by the System Development Corporation. She is working part-time as an R.N. at Dixie Hospital in Hampton, Va. Address: 17 Teresa Drive, Hampton, Va. 23366.

**SHIRLEY GRIFFIN JACOBS** (Mrs. Del) writes that her husband has just returned from his year as a squadron commander at DaNang, Vietnam and is now in Plans and Requirements at the Pentagon. Address: 3413 Charleson Street, Annandale, Va. 22003.



Dr. Edwards

**DR. GLENN THOMAS EDWARDS, JR.**, professor of history at Whitman College, recently published articles on Benjamin Start in the December 1971 and the March 1972 issues of the Oregon Historical Society Quarterly. Address: 1235 Alvarado, Walla Walla, Wash. 99362.

**MARLENE VINCENT MUCHOW** (Mrs. Harold H.) was recently initiated into Pi Lambda Theta National Honor and Professional Association for Women in Education. Address: 2425 N.E. 92nd, Portland, Ore. 97220.

**WALTER RICHARTZ** is head of the Division of Engineering Technology at the Oregon Technical Institute in Klamath Falls, Ore. and also serves as vice president and chief engineer of BWR Associates Environmental Consultants. Address: 1253 Hilton, Klamath Falls, Ore. 97601.

**DR. ERNEST and KATHLEEN REVIS DUVALL** '52 are living in Miami Beach, Florida while he takes a fellowship in Neuroradiology at the University of Miami Medical School Hospital. Address: 5890 S.W. 104th Street, Miami, Florida 33156.

**RALPH BOLLIGER** (L55) is an attorney-at-law in Portland and is the president of the Washington County Bar Association. Address: 1885 S.W. Warwick, Portland, Ore. 97225.

**RICHARD BROWNSTEIN** (L) is the chairman of the Human Relations Commission in Portland. Address: 50 S.W. RIDGE Drive, Portland, Ore. 97219.

## 1954

**DONALD CANTRELL** has moved his family from Casa Grande, Ariz., where he was managing editor of the Dispatch Newspaper, to Laguna Beach, Calif., where he is head of the Laguna Beach Bureau Office of the Orange County Register. Cantrell was recently nominated for a Pulitzer Prize in the commentary-criticism category. Address: 201 Cypress Drive, Apt. 7, Laguna Beach, Calif. 92651.

**DR. HOWARD WILSON**, an associate professor of mathematics and science education at Oregon State University, has moved his family to Goroka, New Guinea, where he is a senior lecturer in mathematics at a new college. He is teaching under the auspices of the United Nations Education, Scientific and Cultural Organization (UNESCO). Oregon address: 3726 Van Buren, Corvallis, Ore. 97330.

**LARRY and MARY POLALES STANDIFER** are living at 2360 Douglas Drive in Eugene, Ore., where he served as head athletic trainer for the United States Olympic Team Track and Field Trials held this summer for the 1972 Olympics. Standifer is a former athletic trainer from Willamette.

## 1955

**JOHN WEISSER** (L) is on the legal staff of the Union Pacific Railroad in Portland, where he also teaches a review course in Inter-

state Commerce Commission Law and Procedure through the Department of Continuing Education at Portland State University. Weisser is married to **DOROTHY ENGELHART WEISSER** '53. Address: 1541 Maple Street, Lake Oswego, Oregon 97034.

**MAJOR H. PAUL JOHNSON** is chief of the Systems Division Directorate of Command/Control at Ent AFB, Colo. Address: 431 College Avenue, Canon City, Colo. 81212.

**WARDE SLIGH** is a pilot for Trans-World Airlines operating out of Kansas City, Missouri. Address: Lake Quivira, Kansas City, Kansas 66106.

**JERRY H. FRIESEN** recently completed residence in a D.M.A. program at the University of Oregon and is now the director of choral activities and assistant professor of music at George Fox College in Newberg, Ore. Address: 409 S. Willamette, Newberg, Ore. 97132.

**KENT E. HOLMES** has moved his family to Vientiane, Laos, where he is a program officer with the Agency for International Development. Address: USAID/RMB, APO San Francisco 96352.

**MAJOR ROBERT J. DYER**, his wife Carol and four children have moved to England, where he is a staff officer with the 513th Tactical Air Wing, Royal Air Force Base at Mildenhall. Address: Box 1649, APO New York 09217.

**DR. CHARLES and JOYCE AMBLER CARTER** '57 are living in Vancouver, Wash., where he was named recipient of the All City PTA Award for volunteer work with youth for 1971. Address: 1008 N.W. 9th Street, Vancouver, Wash. 98663.

**NANCY ANN BAKER HANSON** (Mrs. William K.) is a librarian at the Naval Research Laboratory, Underwater Sounder Reference Division, in Orlando, Florida. Address: 983 Borgain Villa Drive, Rockledge, Fla. 32955.

## 1956

**MAJOR ORIS DANIEL DEARBORN** is on the staff of the Judge Advocate at Keesler Air Force Base, Mississippi. Address: 211 Harmon Circle, Biloxi, Miss. 39531.

**RONALD ORLEBEKE** (L66) is an attorney-at-law with the firm of Coll, Levy and Orlebeke in Concord, Calif. Address: 4312 Pembroke Drive, Concord, Calif. 94521.

**JOHN W. RAY** is the owner and manager of two businesses in Hamilton, Mont. — the Elegant Elk Sporting Goods Store and Poor Richards Book Shop, the largest in Montana. Address: Rt. 2, Box 2306, Hamilton, Mont. 59840.

**WILLIAM S. BJORKMAN**, his wife Carol and two boys live in Saratoga, Calif. where he works for Analytical Mechanics Associates as a senior analyst doing astro-dynamics work under contracts with NASA. Address: 13544 Debbie Lane, Saratoga, Calif. 95070.

**DR. JOHN A. and CAROL LITCHFIELD REHFUSS** '57 are living in DeKalb, Illinois, where he is a professor at Northern Illinois University and doing research in public administration and she is substitute teach-

ing in DeKalb County Schools. Address: 230 Fairmount, DeKalb, Ill. 60115.

**ELLINOR TAYLOR WHEELER** (Mrs. James) has moved with her husband, an engineer with Ampex, and their two daughters to Belmont, Calif. She is employed by the Dept. of Human Resources in San Francisco. Address: 1763 Valley View Drive, Belmont, Calif.

**MAJOR WILLIAM FREEMAN**, USAF (M.A. '64) is a land-use analyst for the Dept. of Defense and is a doctoral candidate in geography at the University of Washington. Address: 3234 N.W. Market, Seattle, Wash. 98107.

**WILLIAM N. LEE** is with the General Adjustment Bureau of Lawton, Okla. and also is a part-time rancher. Address: R.R. No. 1, Verdun, Oklahoma 73082.

**DAVID WOOD** is a substitute teacher in the Boulder Valley, Colo. Schools with an additional assignment teaching Spanish and French at Fitzsimons Hospital, Denver. He also tutors high school, grade school and University of Colorado students in Boulder. Wood's wife, Sue, is a nurse at Boulder Memorial Hospital. Wood's newest hobby is playing lead guitar in a bluegrass music group, "The Bluegrass Etcetera." Address: 645 Dewey, Boulder, Colo. 80302.

## 1957

**WILLIAM and JOYCE LONNEKER WHEAT** '58 are in California where he is the manager of Distribution/Media education a new industry oriented education program for IBM customers and employees. Address: 6574 Crown Blvd., San Jose, Calif. 94100.

**ANN NOTSON POLING** (The Rev. Charles E.) lives with her family in Newport, Ore., where her husband is the minister of the First Presbyterian Church. Address: 606 N.E. 20th Place, Newport, Ore. 97385.

**JAMES MERCER** is in corporate development work. Address: 3987 Woodside Ct., Lafayette, Calif. 94549.

**ROBERT J. WHITE** is a systems analyst for Systems Engineering Labs and was recently transferred from headquarters in Ft. Lauderdale, Fla. to Southfield, Mich. Address: 7330 Linda Lane, Birmingham, Mich. 48010.

**MAJOR DONALD and STEPHANIE RYER SMITH** '60 are residents of Tucson, Arizona, where he is an USAF pilot, stationed at Davis Monthan Air Base. Address: 1902 S. Regina Cleri Drive, Tucson, Arizona 85710.

**ROBERT I. and JOANN CURRY ELLIS** reside at 2577 Rose Blossom Drive in Springfield, Ore. 97477. He recently received his master's of music degree at the University of Oregon and now is the head of the music department at Hamlin Junior High. She teaches at Edison Elementary in Eugene.

**LTC. DONALD and CHARLOTTE KLEIN MILLER** '58 are living with their four sons in Bitburg, Germany, where he is Squad Commander of 22 TFS, flying F-4s. Address: CMR Box 227, APO New York 09132.

**NADINE SMALL ST. LOUIS** (Mrs. Robert V.) received a Ph.D. degree in English from the University of California at Los Angeles in March, 1972 and is presently a member of the English department faculty at the University of Wisconsin. Address: 1207 State Street, Eau Claire, Wisconsin 54701.

**PATRICIA GORDON MASH** (Mrs. D.L.) is studying for her doctorate in music performance with Gyorgy Sandor at the University of Michigan. In September, she will begin serving as a graduate teaching assistant and will receive a Horace Rackham Scholarship grant. Address: 2114 Arlene Street, Ann Arbor, Mich. 48103.

**ANN DENMAN HULTGREN** is now working in pediatrics at Roseville Community Hospital, Calif. Address: 4313 Earnscliff Avenue, Fair Oaks, Calif. 95628.

## 1958

**LT. CDR. EARL PAJARI**, an intelligence officer in the U.S. Navy, is currently attending school at Mare Island in Vallejo, Calif. in preparation for a year's tour of duty in Vietnam. Address: 4436 Tanglewood Way, Napa, Calif.

**THE REV. ALAN and DOROTHY HUDSON MACKILLOP** '62 are residents of Mahopac, New York, where he is vicar for the Episcopal Church of the Holy Communion. Address: R.F.D. No. 8, Oak Drive, Mahopac, N.Y. 10641.

**WILLIAM E. WALSH, III** is the manager of the International Market Development, Medical Products, in St. Paul, Minn. Address: Proehl's Trail, Hudson, Wis. 54016.

**CHARLES EARL NATHAN** is an accounting clerk for Confederated Tribes at Warm Springs, Ore. Address: 1025 Chestnut Street, Madras, Ore.

**DAVID E. POFF** is the manager of programming for Lamb-Weston, Inc. in Portland. Address: 16 S.W. Othello, Lake Oswego, Ore. 97034.

**DR. MERLIN I. HOFSTETTER** teaches sociology at the University of Nebraska at Omaha. Address: 1607 S. 58th Street, Omaha, Neb. 68106.

**MIRIAM L. MATHEWS WEINBENDER** (Mrs. Jack L.) has a new home in Tigard, Ore. — 8570 S.W. Cedar Crest. Her husband is evening coordinator of Portland Community College, where she teaches English.

## 1959

**MARVIN E. HANSEN** is a partner in the law firm of Hansen, Curtis, Hendershot and Strickland in Eugene, Ore. Address: Rt. 1, Box 344, Springfield, Ore. 97477.

**DON F. SWARTZ** is a biologist for the Oregon Fish Commission in Clackamas, Ore. Address: 7816 S.E. Dolinda Street, Milwaukie, Ore. 97222.

**ROBERT E. GILCHRIST** is administrator at Highland Hospital in Hillsborough, Calif. Address: 206 El Cerrito, Hillsborough, Calif. 94010.

**THE REV. HERBERT and LAUREL RATCLIFF TALABERE** '62 are residents of Columbus, Ohio, where he is on the staff of Columbus Area Office, U.S. Dept. of Housing and Urban Development and she is on the faculty of Columbus Technical Institute, teaching nursing. Address: 90 North Remington, Columbus, Ohio 43209.

**MAJ. FREDERICK L. DAVIS** has completed his second sea tour. His next duty station is Wright-Patterson AFB, Ohio with the Foreign Technology Division (FTD), AF Systems Command. Address: HQ 7 AF, APO San Francisco 96307.

**R. GREG and AUDREY BALL NOKES** '60 has left Argentina, where he was a Latin American correspondent for the Associated Press, and are now living in Massachusetts. Nokes is attending Harvard University on a Nieman Fellowship. Address: 7 Shaler Lane, Cambridge, Mass. 02138.

**DAVID ERICKSON** has returned to the states after spending three years in Brussels, Belgium as the manager of staffing for International Telephone and Telegraph, responsible to fill executive position openings throughout ITT's extensive European operations. He is now associated with Staub, Warmbold and Associates, Inc., a New York-based executive recruitment consulting firm. He is in the process of opening their Atlanta office as Vice President and General Manager. Address: 1598 W. Sussex Rd. N.E., Atlanta, Ga. 30306.

## 1960

**THE REV. FLOYD W. MACKLER** is a minister for the Naches Heights Community Church in Yakima, Wash. Address: Rt. 6, Box 106, Yakima, Wash.

**GRETCHEN GOODRICH WILIVER** (Mrs. Sterling) writes that her husband is now an associate



Capt. Hone

with the A. C. Goodrich law firm in Bend, Ore. Address: 377 Dean Swift Rd., Bend, Ore. 97701.

**CAPT. STEPHEN A. HONE** recently received the U.S. Air Force Commendation Medal for meritorious service at Headquarters, Warner Robins (Ga.) Air Materiel Area. He is presently a procurement officer at Wright-Patterson AFB, Ohio. Address: 6257 Leewood, Dayton, Ohio 45424.

**DALE H. DENHAM** has changed position at Battelle Northwest, transferring from Radiation Standards Section as supervisor of calibrations to the Radiological Physics section. He is now spending his time on Environmental Impact Statements for Nuclear Power Reactors. Address: 1107 Perkins, Richland, Wash. 98952.

## 1961

**ALAN ZEHNTBAUER** is a real estate salesman for the Bill Snyder Company in Portland. Address: 8230 S.W. Cashmar Lane, Portland, Ore. 97225.

**CAPT. THOMAS A. ELLIOTT** recently completed a tour of duty with the U.S. Air Force on Guam. Address: 1238 Palau Loop (Guam), APO San Francisco 96334.

**JAMES A. SEITZ** is manager of materials for the Control Data Corporation in Tucson, Arizona. Address: 1802 South Palm Springs Circle, Tucson, Ariz. 85710.

**DR. JOHN N. GALLAGHER** is a geophysicist at the Amoco Products Company in Denver, Colo. Address: 3280 Lamar Street, Wheat Ridge, Colo. 80033.

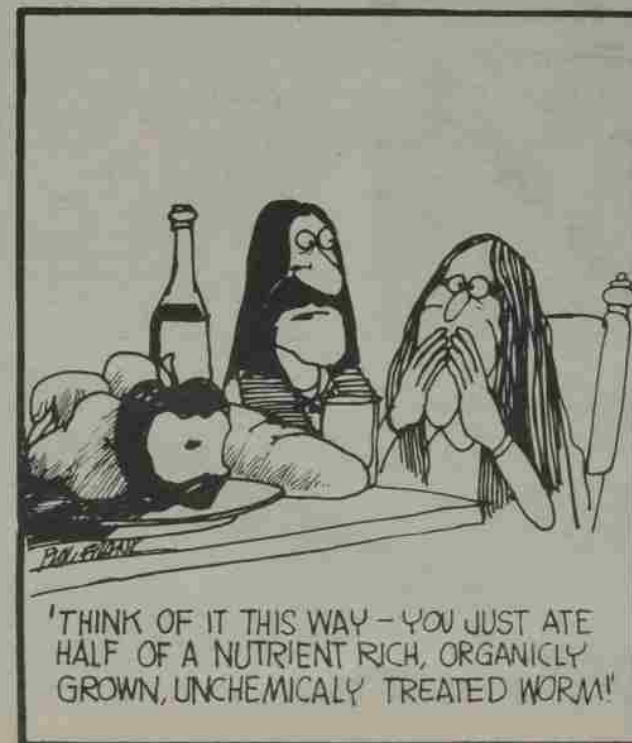
**STEPHEN and JO McNARY CARMICHAEL** are living in Kennewick, Wash., where he is the new director of the Juvenile Court for Benton-Franklin Counties and she is organizing and working with the Food Bank, which serves the Tri-Cities. She also works with the Problem Pregnancy Counseling and Referral Service. Address: 3511 W. 4th Place, Kennewick, Wash. 98336.

**JAMES M. SNELL** is currently teaching science in a Dept. of Defense High School on an Air Force base, 35 miles N.W. of Tokyo, Japan. Address: Box 725, 331 AB Sq., APO San Francisco 96394.

**DAVID P. REHFUSS** is now stationed in Washington, D.C. with the Dept. of State, after two overseas postings with the Foreign Service. Address: 621 North Carolina Avenue, S.E., Washington, D.C. 20003.

**GERRY FANRICH JOHNSON** (Mrs. David J.) recently visited her former WU roommate, **KAREN FLOREY MORRISON** '61, in Reno, Nev. Mrs. Johnson resides in Portland, where she is very active in the Women of Elks, Campfire Girls and Day Camps. Address: 19834 N.E. Multnomah, Portland, Ore. 97230.

**THE REV. ELDON L. and MARCIA HUMPHREY OLSON** are living in Green Bay, Wis., where he is serving a local parish and she is a counselor at the University of Wisconsin. Address: 119 Bader Street, Green Bay, Wis. 54302.





WARNE NUNN '41, Vice Chairman of the Board who directed Commencement ceremonies, accompanies keynote speaker Daniel Schorr, CBS newsman. Robert C. Notson '24, left, was awarded an honorary Doctor of Humane Letters degree. Executive editor and publisher of The Oregonian, Notson is a life member of the Board of Trustees.

## 1962

**NORMAN M. CHAPIN** is a student at the University of Arizona, studying anthropology. Address: 310 N. Tyndall, Tucson, Arizona 85719.

**BETTY STEPHENS BAUER** is a national recruiter for Turner Enterprises in Fort Worth, Texas. Address: 708 East Sanford, Arlington, Texas.

**FREDERICK DOSHER** is a pilot and manager of second officers for Western Airlines in the Sea-Tac International Airport in Seattle, Wash. He is married to the former **ALEXANDRIA MARCH '65**. Address: 25804 S.E. 154th, Issaquah, Wash.

**THEODORE J. GOODING**, his wife Sally Jo and three children have moved to Colorado Springs, Colo., where he is teaching in the law department at the U.S. Air Force Academy. Friends may write Gooding in care of the Academy.

**VERRILL REDO RINEHART** lives in Boulder, Colo. with her children and husband, who is with the Boulder Research Lab. Address: 4827 Thunderbird Drive, Boulder, Colo. 80303.

**ROBIN MOSELEY O'CONNELL** (Mrs. Kevin), her four children are pending six weeks of the summer at

St. Croix, U.S. Virgin Islands and Bermuda. Address: 1075 Cascade Drive, Menlo Park, Calif. 94025.

**ROBERT L. BURROW** has joined the Grandma Cookie Company as marketing manager. He is married to the former **CONNIE WISTING '64**. Address: 14620 S.W. 87th Avenue, Tigard, Ore.

**HUGH D. STITES** has returned to the states after a 2½ year tour with the U.S. Air Force in Turkey. He is currently a stockbroker with the Denver Office of Paine, Webber, Jackson and Curtis. Address: 11891 E. Alaska Avenue, Aurora, Colorado 80010.

**WILLIAM and ELIZABETH F. MOORE PALMROSE '61** are living in California, where he is the Asst. Safety Administrator for the Guy F. Atkinson Company of San Francisco. He is active in the Buena Park community, serving as Jaycee President, Little League coach and Webelos Cub Scout leader. Address: 6401 San Marcos Way, Buena Park, Calif. 90620.

**PETER KREMER** has been promoted to senior vice president of the Newhall land and Farming Company, a NYSE real estate development company, which is developing the new town of Valencia, just north of Los Angeles. He is also president of Valencia Corporation, a subsidiary company in the residential development and construction business. Address: 90 La Loma Road, Pasadena, Calif. 91105.

**ROBERT J. HERBERGER** is the coordinator of Volunteer Services under the Multnomah County Juve-

nile Court in Portland. Address: 1401 N.E. 88th, Portland, Ore. 97213.

**PETER B. McDOWELL**, manager with Price Waterhouse and Company, has been appointed to the Budget Steering Committee for the San Francisco Public Schools. Address: 290 Green Street, San Francisco, Calif. 94133.

**C. ARTHUR DIMOND**, who received his Doctor of Musical Arts degree from the University of Oregon last year, is now the coordinator of vocal studies at Northern Michigan University in Marquette, Mich. Address: 450 E. Ridge, Apt. A, Marquette, Mich. 49855.

## 1963

**WALTER L. CAUBLE (L67)** is an attorney-at-law with the firm of Schultz and Salisbury in Grants Pass, Ore. Address: 1313 N.E. Foster Way, Grants Pass, Ore.

**GARY L. ROBINSON** is a salesman for Gillette Company in Portland. Address: 1917 S.E. 51st, Portland, Ore.

**WILLIAM B. MOORE (L)** is a new partner with the law firm of Ferguson and Burdell in Seattle, Wash. Address: Rt. 8, Box 8637, Bainbridge Island, Wash. 98110.

**DR. RICHARD and JACQUELINE GRABER LITCHFIELD '64** are now in Eugene, Ore., where he recently opened his office for the practice of orthodontics. Address: 4059 Donald, No. B, Eugene, Ore. 97405.

**SAM S. FARR** writes that he is now employed by the California State Legislature as Chief Consultant to Assembly Constitutional Amendments Committee. His wife Shary was active in Senator Edmund Muskie's campaign and was a delegate in Florida. Address: 3621 E. Curtis Park Drive, Sacramento, Calif. 95818.

**CPT. RICHARD F. LORD** is on an Royal Air Force exchange tour as a jet instructor pilot and is flying in an RAF formation aerobatic team called the "Red Pelicans." Address: USAF/RAF Exchange Program, APO New York 09194.

**GEOFFREY and JOAN BARBER RUTKOWSKI '61** are living in Santa Barbara, Calif., where he is teaching cello at the University of California. Most recently, Rutkowski performed in recital in London and Amsterdam, then toured Poland, Norway and returned to London where he played in the Queen Elizabeth Hall. Address: 1524 Dover Road, Santa Barbara, Cal. 93103.

**ANTHONY GOOD** is in corporate banking work with the Bank of California in the Oakland, Calif. Office. The Goods have a new daughter, Kristen. Address: 21 Brentwood Drive, San Rafael, Cal. 94901.

**MARJORIE STEPHENSON** is a news reporter for the Daily Journal of Commerce newspaper in Portland. Address: 901 S.W. King, Apt. 401, Portland, Ore. 97205.

**JOHN R. LUCAS**, his wife Kathy, and three sons live in Stayton, Ore., where he owns John Lucas Chevrolet. Address: 1485 Highland Drive, Stayton, Ore. 97383.

**LARRY B. CAMPBELL** is the corporate personnel director for King Broadcasting Company in Seattle, Wash. Address: 320 Aurora Avenue, N., Seattle, Ore. 98109.

## 1964

**GARY WYNIA** is a professor at the University of Minnesota. Address: 1264 Knapp Place, St. Paul, Minn.

**DR. ALLAN R. FROST** recently completed two years with the Public Health Service in Anchorage, Alaska as an itinerant physician for the Aleutian Islands and the surrounding areas. He is now in residency in ophthalmology at the University of Minnesota Medical School in Minneapolis. Address: 994 Roma Avenue, St. Paul, Minn.

**DOUGLAS and JUDITH JESSEN MOORE** are residents of Portland, where he is the senior financial analyst for Evans Products Company. Address: 10315 S.W. Washington Street, Portland, Ore. 97225.

**EUGENE F. MILLER** has resigned from the U.S.A.F. Commission and is now an environmental protection ecologist for the Orange Company Planning Dept. in Santa Ana, Calif. He also is working for a master's degree in public administration from Cal-State in Fullerton and a certificate in Urban Planning from the University of California at Irvine. Address: 1319 N. Louise, Santa Ana, Calif. 92706.

**MARY J. MARTIN** is a speech therapist for the Easter Seal Society, working as a part of a traveling rehabilitation team. Address: 42 River Street, West Springfield, Mass. 01089.

**JAMES M. and MARTHA MOGAN BROWN '68** reside in Corvallis, Ore., where he is the Benton County district attorney. Address: 337 Conifer N.E., Corvallis, Ore. 97330.

**JOHN D. HARRINGTON (L)** is a new partner with the law firm of Winne and Banta in Hackensack, N.J. Address: The Town House, Main Street, Hackensack, N.J. 07602.

**HERBERT G. MILLER** is a systems analyst for King County in Washington. Address: 18028 - 187th Avenue, S.E., Renton, Wash. 98055.

**JAMES and MARCIA RUBY DOUGLAS '62** reside in Portland, where he is the art director for KATU, Channel 2, TV. Mrs. Douglas has "retired" as a public information specialist to raise her two children. Address: 2302 N.E. Tillamook, Portland, Ore. 97212.

**LARRY G. and LEANNA HARVILLE MORGAN** reside in Corvallis, where she is employed at the graduate school at Oregon State University, while he attends OSU for his Ph.D. degree in chemistry. Address: 1275 N.W. 26th, Corvallis, Ore. 97330.

**PHILLIP KROZEK** is the controller of the Uniline Corporation in Union City, Calif. He is married to the former **MARNE WENDELL**. Address: 29 17th Avenue, Atherton, Calif. 94025.

**ROSEMARY K. MYERS** is teaching at Heilbronn Elementary School in Germany. Address: Heilbronn Elem. School, APO New York 09176.

**ELIZABETH BURGOWNE THOMPSON (Mrs. Richard)** is the production planner and assistant to the president of the Fashion Rite Girl Coat Company in New Jersey. Address: 60 Helms Drive, Easton-town, N.J. 07724.

**BERRY and ELIZABETH LYNN CRIDER** have a new home in Foster City, Calif. . . 961 Flying Fish. He is staff assistant for Zellerbach Paper Company in S. San Francisco and she is teaching part-time in Canada Junior College.

## 1965

**PETER J. STIDD** is a captain in the USAF, stationed at Beale AFB in California. Address: 3573 Dumosa Way, Beale, AFB, Calif. 95603.

**JOHN C. POLING** is a ministerial student at Princeton. Address: 300 Hodge Hall, Princeton Theological Seminary, Princeton, N.J. 08540.

**SUSAN A. FOSTER** is teaching at The English Center in Bergamo, Italy. Address: c/o Signora Esposito, Via Sylva 1, Bergamo, Italy.

**DAVID L. FAIRBROOK** is a staff medical officer in the U.S. Navy, Destroyer Squadron Eleven, Pearl Harbor. Address: 987 Murray Drive, Honolulu, Hawaii.

**CHARLES K. AKERS** is a cancer research scientist for the Roswell Park Memorial Institute in Buffalo, New York. Address: 37½ South Cayuga, Williamsville, New York.

**ROBERT and MARILYN VIKEN BLODGET '66** live in Amherst, Mass., where he is a doctoral candidate in the Dept. of Education at the University of Massachusetts. Address: 10 Beech, Amherst, Mass.

**CLAUDIA FARROW McAULAY (Mrs. Seward)** is a sales agent for Pan American in San Francisco, Calif. Address: 6623 Leyland Park Drive, San Jose, Calif. 95120.

**DRUE BARNUM SAMPSELL** is a homemaker in Portland. Address: 7395 S.W. 87th Avenue, Portland, Ore. 97223.

**CANUTO TACDERAN, JR.** is an auditor for the U.S. Treasury in San Francisco. Address: 1419 - 21st Avenue, San Francisco, Calif. 94122.

**DALE and LOIS VAN LOBEN SELS BUNSE** are both teaching a form of art in California; he is a potter-instructor at Columbia Junior College and she teaches art to 7th and 8th graders at Jamestown Elementary School and choreography to high school drama students. Address: P.O. 838, Jamestown, Calif.

**PINAR CRANE** has separated from the U.S. Air Force and is a pilot in the U.S. Air Force Reserve, while studying at Portland State University. He is married to the former **LEE GRISWOLD '66**. Address: 4045 S.E. Ash, Portland, Ore. 97214.

**CAROL McNEILL COOLIDGE** writes that her husband **HARRY C. COOLIDGE (L 62)** is a new partner in the law firm of Stanley and Coolidge in Santa Cruz, Calif. Address: 129 Goss Avenue, Santa Cruz, Calif. 95060.

**DR. WESLEY and JUDITH McWAIN ARMSTRONG '68** have a new home in Prineville on 2½ acres. Armstrong has opened a dentistry practice. Address: Route 1, Box 610, Prineville, Ore. 97554.

**CAROL K. WOODWARD** is teaching ceramics classes at the Community Center in Provincetown, Mass. and also making silver jewelry. Address: 36 Locust Street, Attleboro, Mass. 01733.



Capt. Smith

**CAPT. STEPHEN SMITH** has been decorated with the Bronze Star Medal for meritorious service at Udorn Royal Thai AFB, Thailand. He is currently stationed at Spangdahlem AB, Germany, where he is now chief of the communications-electronics operations.

**THOMAS E. GLASS** has received his doctorate in education sociology from Wayne State University and has accepted an appointment as assistant professor at Indiana University for 1972-73. Address: 7421 Freda Street, Dearborn, Mich. 48126.

**CPT. STEPHEN R. ENLOE** is on a two-year tour of duty as a physician, stationed at Ching Chuan Kang Air Base, Taiwan with the U.S. Air Force. Address: CMR No. 1894 PACAF, APO San Francisco, Ca. 96319.

**CAROL GIBSON RATZLAF (Mrs. Walter)** resides in Portland with her husband and two children. She recently opened a new piano studio in downtown Portland. Address: 3414 N.E. 32nd Avenue, Portland, Ore. 97212.

**DR. CYNTHIA L. JANES** is a research psychologist in the Child Psychiatry Department of Washington University School of Medicine and Malcolm Bliss Mental Health Center in St. Louis, Missouri. She recently purchased an old home and is completely remodeling it. Address: 106 Tiffin Avenue, St. Louis, Mo. 63135.

**DR. ROBERT W. SMITH** has moved to Bend, Oregon and is practicing at the Bend Memorial Clinic. He can be reached through the Clinic.

**JEANNE ANTOINETTE LEISURE HICKS** is teaching first grade in Springfield, Ore. Address: 755 E. 36th Avenue, No. 8, Eugene, Ore. 97405.

## 1966

**TED G. HETU** is an electronic engineer for the National Oceanic and Atmospheric Administration-Engineering Development Laboratory in Rockville, Md. Address: Apt. B308, 500 23rd Street N.W., Washington, D.C. 20037.

**MITCHELL W. MACK (L)** is general manager for Barnum's Inc. in Eugene, Ore. Address: 1790 Norwood, Eugene, Ore. 97401.

**JANA CHEATHAM** works for the Oregon Journal newspaper in Portland. Address: 6711 S.W. Canyon Road, Apt. 2, Portland, Ore.

**ROBERT W. THURMAN** is a research assistant in the Dept. of Special Education at the University of Cincinnati. Address: 8909 N.E. Multnomah, Portland, Oregon.

**ROGER A. BERGMANN** is a second year law student at the University of Santa Clara Law School where he is president of the Phi Alpha Delta law fraternity. Address: 18623 Gary Avenue, Sunnyvale, Calif. 94086.

**WILLIAM R. SELBY (L)** is an attorney for the City of Portland. Address: 13531 S.W. 63rd Place, Portland, Oregon 97219.

**CHRISTOPHER L. DUDLEY** is a legislative and field representative for the Oregon School Boards Association in Salem. Address: 1642 Madras Street, S.E., Salem, Ore.

**ROBERT and JOAN WELLS COWAN '69** are living in Enderby, British Columbia, Canada, where he is a cedar shake maker. Address: P.O. Box 76, Enderby, B.C.

**LUCILLE CLARK** is a producer/writer for KABC-TV in Hollywood, Calif. Address: 13955 Tahiti Way, Apt. 280, Marina Del Rey, Calif. 90291.

**JAY and SHARON FLANIGAN GRENIK '67** have moved to 647 Cuesta Avenue in San Mateo, Calif., where he has entered private practice of law and she will attend graduate school. Grenik served as assistant-law dean at Willamette for one year before moving to California.

**BONNIE RITCHIE BROYLES (Mrs. William B.)** has moved to a new house with her husband and son Marty. Address: 893 Ithaca Drive, Sunnyvale, Calif. 94087.

**BRUCE A. ANDERSON** is a trader in the Institutional Sales Dept. of E. F. Hutton in Stamford, Conn. Address: 76 Hamlock Lane, Stamford, Ct. 06902.

**VIRGINIA VERITY KIMBALL (Mrs. John)** has moved with her family into a new house in Pasadena. She continues to help him with his animated filmmaking. Address: 305 Cherry Drive, Pasadena, Calif. 91105.

**DONNA KEMP BROWN** is a teacher at Lewis and Clark College in Portland and her husband **WARREN BROWN** will take a group of 20 Lewis and Clark students to Washington, D.C. fall term of 72-73 academic year. Address: 698 McVey, No. 81, Lake Oswego, Ore. 97034.

**CAROL SCHMIDT HUEBNER '67** writes that her husband **PAUL HUEBNER '66** has received the Stordahl commission to write for the UCLA Chamber Orchestra. His orchestral piece, "Toyon," which placed 3rd in a contest, was recently professionally performed at UCLA. Address: 5767 Tuxedo Terrace, Hollywood, Calif. 90068.

**WILLIAM and JACQUELINE GRUVER WILLINGHAM '68** are living in Easton, Pennsylvania, where he is an assistant professor of history at LaFayette College. Address: 212 Burke Street, Easton, Pa. 18042.

**CAROLE LARSEN THOMAS** has moved with her family from California to Portland where her husband will begin a residency in orthopedic surgery at the University of Oregon Medical School. Address: 4265 N.W. 17th Avenue, Portland, Ore. 97229.

**DARLENE HAWKINS OLSTAD** is at home with her toddler daughter while her husband, **DAVID L. OSTAD ('66 & L '71)**, works as a deputy district attorney for Multnomah County. Address: 9426 N. Hodge, Portland, Ore. 97203.

## 1967

**LESTER K. BUSH** owns a grape vineyard in Sunnyside, Wash. Address: Rt. 1, Box 1324, Sunnyside, Wash. 98944.



## 1968

**NORMAN P. HUNTER** recently completed his senior year at the Kirksville College of Osteopathic Medicine in Kirksville, Missouri and is in his first month of internship at the Delaware Valley Hospital, Bristol, Pennsylvania. He is receiving mail at 15304 S.E. Lee Ave., Milwaukie, Ore. 97222.

**SHIRLEY BAIRD HERRICK** (Mrs. Charles) recently returned for a four-month tour of Europe and is now back at her job as a systems analyst for the U.S. National Bank in Portland. Her husband is working for the Oregon State Dept. of Agriculture. Address: 11359 N.E. Halsey, Apt. 31, Portland, Ore. 97220.

**JOHN E. LAMP** (L) is an assistant attorney general in the Office of the Attorney General for the State of Washington in Spokane. Address: 211 North 9th, Spokane, Wash. 99204.

**WILLIAM H. FOWLER** (L) is an assistant district attorney for Jackson County in Medford, Ore. Address: 11 North Keene Way Drive, Medford, Ore. 97501.

**ROBERT L. GRIMES** is a deputy probation officer for San Diego County, Calif. Address: 818 Capistrano Place, San Diego, Calif.

**THE REV. DONALD G. BROWN** was ordained to the priesthood of the Episcopal Church in January and is now an associate rector in charge of Christian Education and college work at St. Paul's Episcopal Church in Salem. Church Address: 1444 Liberty St. S.E., Salem, Ore. 97302.

**MAUREN WILLARD CAMPBELL** is an inbound traffic coordinator for the Kerr Steamship Company in Seattle, Wash. Address: 14213 N.E. 64th Ct., Redmond, Wash.

**CAPT. HERBERT C. PESCHEL** is a dentist in the U.S. Army, stationed in Texas. Address: La Ronda, 211, 2530 Harry Wurzbach Road, San Antonio, Texas.

**RONALD T. BANTA** (L) is an assistant district attorney in Carson City, Nevada in addition to a law partner in the firm of Fondi and Banta. Address: 808 Saratoga, Carson City, Nevada.

**SHARON E. LEHRER** is an education instructor at Lewis and Clark Community College in Godfrey, Illinois. Address: 1120 Alby Street, Alton, Ill. 62002.

**NANCY M. SCHNURSTEIN** is a claims supervisor for Liberty Mutual Insurance in Los Angeles, Calif. Address: 2500 4th Street, Apt. 3, Santa Monica, Calif. 90405.

**MIRIAM E. BETTIS CRAVENS** (Mrs. John Ross) is a homemaker in Gladstone, Ore., and her husband is a deputy district attorney for Clackamas County in Oregon City. Address: 1075 Bellevue, Gladstone, Ore. 97027.

**KARL G. KNIGHT** is a student at Hayward State College, Calif. He is receiving mail in care of Mark G. Knight, 2696 Miller Avenue, Mt. View, Calif. 94040.

**JOHN L. HEMANN** (L) was released from active duty in the U.S. Air Force in January and has moved to Salem, where he is an associate

with the law firm of Crawford, Garrett and Seideman. Address: 4790 Skyline Rd., Apt. 90, Salem, Ore.

**SAMUEL P. FELIX** is a student at the University of Denver School of Business. Address: 3430 S. Dahlia Street, Denver, Colo. 80110.

**WILLAIN E. OPRAY** is a service measurement analyst for United Airlines in the San Francisco International Airport. Address: 3737 Fillmore Street, Apt. 103, San Francisco, Calif. 94123.

**RICHARD KING** recently completed two years with the U.S. Army and 14 months in Vietnam as a military policeman and is currently working on his master's degree at the Thunderbird Graduate School of International Management in Glendale, Arizona. His wife the former **MARIN PEARSE** also '68 was working in the Admissions Office at the school but is now at home taking care of their new baby, born in January. Address: 5716 North Black Canyon, Apt. 52, Phoenix, Arizona 85017.

**F. LAGARD SMITH** (L), who served as director of admission and professional conduct for Oregon State Bar Association, has been appointed an associate professor of law at Pepperdine University Law School, Los Angeles, Calif.

**SUZANNE MENDOZA HODGES** is a Spanish teacher at Myrtle Point High School, Ore. Address: 1824 Thomas, Coos Bay, Ore.

**JAMES HICKS** continues to do graduate work at the University of Oregon, Eugene, Ore. Address: University of Oregon, Institute of Mol. Biology, Eugene, Ore. 97403.

**GARY W. YUNKER** is a graduate student at Southern Illinois University and will receive a Ph.D. degree in Industrial Psychology in September. Address: Route 2, Box 443, Murphysboro, Ill. 62966.

**GARY L. and JANE ELLEN MOORE WEBB** are living in Nebraska, where he is a lieutenant in the U.S. Air Force, serving as chief of military pay at Offutt AFB Omaha, Neb. Ellen is teaching second grade at LeMay Elementary. Address: 1407 Buck Drive, 127, Bellevue, Neb.

**MARILYN K. HANSON** is a candidate for a master's degree in English at Portland State University. Address: 915 S.E. 53rd Ave., Portland, Ore. 97215.

**MICHELE J. PATTERSON DAHL** (Mrs. John) is a secretary for Riggs Inc. in Salem. Address: 1899 Broadway Street, N.E., Salem, Ore. 97303.

**ELEANOR H. JONES EMERY** (Mrs. Robert H.) is a teacher in the Montgomery City Public Schools. Address: 1912 Valley Stream Drive, Rockville, Maryland 20851.

**CAROLYN BUSH THOMPSON** (Mrs. Terry) is an instructor of mathematics at Portland Community College. Address: 1723 S.E. 58th Avenue, Portland, Ore. 97215.

**MARY BEECHLER SANKO** (Mrs. Ronald) writes that her husband works at the home office of State Farm Insurance Company in Bloomington, Ill. She is a homemaker. Address: 11 Willamette Drive, Normal, Ill. 61761.

**PETE and RHONDA JAMES CARLSON** '68 are now living in Virginia following his promotion from a

senior caseworker to administrative officer within the Federal Bureau of Prisons. He is now assigned to the Central Office of the Bureau in Washington, D.C. and is responsible for coordinating Casework services between the 42 federal penal institutions. She is working in Virginia as a dental hygienist. Address: 3345 Ardley Court, Falls Church, Va. 22041.

**LINDA FALCONER PARKER** has resigned her job as a legal secretary and is at home raising a new baby. Address: 715 Mill Street, Dal-lad Ore. 97338.

**NANCY APLAN HAWKINS** (Mrs. Douglas S.) works as a part-time teacher's aide at the Montessori School for Child Development in Myrtle Beach, South Carolina, where her husband is stationed in the Air Force. Address: 630A Birch Ave., Myrtle Beach AFB, South Carolina 29577.

**RODNEY L. ALLISON** is a pilot in the U.S. Air Force, stationed at Fairchild AFB, Spokane, Wash. He receives civilian status in fall, 1973. Address: 8361 Pine, Fairchild AFB, Washington 99011.

## 1969

**DENNIS and CHARLOTTE LANGFORD CAHOUN** '68 live in Homer, Alaska, where he is self-employed after being released from active duty in the U.S. Navy last October and she is an administrative assistant for the City of Homer. Address: Box 751, Homer, Alaska 99603.

**HELEN M. LANG** is a chemist at the University of Washington. Address: 2039 Eastlake E., Seattle, Wash. 98102.

**DAVID M. JOHNSON** is the assistant manager of The Refectory Restaurant at Raleigh Hills, Ore. Address: 1364 S. Clackamas River Drive, Oregon City, Ore. 97045.

**GEORGE J. COOPER** was graduated from Duke University School of Law in Dec., 1971 and has been clerking for the law firm of Morrison, Bailey, Dunn, Cohen and Miller in Portland. This summer, Cooper is taking the Oregon Bar Review and Bar Exam. Address: 121 Church Street, Apt. 5, Lake Oswego, Ore. 97034.

**DENNIS M. NELSON** is the store manager of the Firestone Tire and Rubber Company in Everett, Wash. Address: 1822 Hoyt Avenue, Everett, Wash.

**RICHARD D. BAIRD** is an ecological researcher for the State of Oregon, working in Salem and Eugene. Address: 450 County Club Road, Eugene, Ore.

**WILLIAM B. PHILLIPS** is a law student at Northwestern Law School in Portland. Address: 09144 S.W. Palatine Hill Road, Portland, Ore.

**PAMELA WEEKS** spent last year in Chappaqua, N.Y., working in a drop-in center for young people, 12-18. This fall, she will begin work on her master's degree in psychiatric social work at the Columbia University School of Social Work. Permanent Address: 9619 46th S.W., Seattle, Wash. 98116.

**ENSGN CHARLES and DOROTHY SLAUGHTER HOUCK** are living in California, where he is attending nuclear power school in preparation for duty on nuclear submarines in the U.S. Navy. Address: 1635 Valle Vista, Vallejo, Calif. 94590.

**KATHLEEN A. YEO** is a medical technologist at Emmanuel Hospital in Portland, Ore. Address: 3866 S.E. Taylor, Apt. 3, Portland, Ore.

**GLENDIA HIEBER BLANCHARD** (Mrs. Alan) is the vocal music director at Central Linn High School in Halsey, Ore. and her husband Alan is studying architecture at the University of Oregon. Address: P.O. Box 245, Halsey, Ore. 97348.

**EDWARD J. SULLIVAN** (L) recently received his master's degree in history from Portland State University and is currently the county counsel for Washington County. Address: 1625 S.E. Oak, Apt. 17, Hillsboro, Ore. 97123.

**NANCY HOCHSTETLER HURLBURT** is now teaching the sixth grade at Twin Hill Elementary School in Riverside, Calif. She is married to **GREGORY HURLBURT** also '69. Address: 21865 Dreece, Riverside, Calif. 92506.

**MARIE GARDNER** is engaged to Lawrence Hills of Albany, New York, who is an insurance consultant for Metropolitan Life, in Washington, D.C. Address: 3800 Regency Parkway, No. 104, Suitland, Md. 20023.

**LARRY C. GALE** recently returned from two years as an advisor in Vietnam and plans to attend Stanford University School of Business this fall. Address: 2529 N.W. Northrup, Portland, Ore. 97210.

**SHARON HOWE JOHNSON** (Mrs. Marl A.) resides in Kewanee, Illinois, where her husband was recently transferred by the Hyster Company. He is now in the engineering department of the newly-formed Construction Equipment Division. Address: 700 Morton Avenue, Kewanee, Ill.

**NANCY J. BEARG** is a research assistant for the Senate Armed Services Committee in Washington, D.C. Address: 1501 26th N.W., Washington, D.C. 20007.



Lt. Ellis

**SECOND LT. GEORGE V. ELLIS JR.** has received his silver wings upon graduation from the U.S. Air Force pilot training school and has been assigned to Norton AFB, Calif., to fly the C-141 aircraft.

**STANLEY (L) E. and MARY J. HADLOCK BUNN** live in Salem, where he recently graduated from the Willamette University College of Law. Mary is a pre-school teacher at the Oregon State School for the Deaf. Address: 525 Tryon Street, N.E., Salem, Ore. 97303.

**SUSAN L. PAZINA** resigned her position as secretary for the National Security Council and is now working in the legislative liaison office of the State of California. She is working to coordinate state and federal relations between California and the U.S. Government. Address: 5667 Rayburn Avenue, Alexandria, Va. 22311.

**GEORGE T. and NANCY TAYLOR BARKER** are living in Portland, where she is working for KPTV and he recently completed his third year at the University of Oregon Medical School. Address: 3402 S.W. Veterans Hospital Rd., Portland, Ore. 97201.

**VERNON G. and JUDY DODD GILMORE** are both at the University of Oregon Medical School; she is working as a medical technologist and he is a student in the dental school. Address: 1714 N. Farragut, Portland, Ore. 97217.

**SUZANNE CAUBLE LEVITAS** (Mrs. Menachem) is employed as an administrator for Plastic Surgery Research Laboratory and is studying and pursuing vocal music performance at the University of Virginia. Her husband is a doctoral candidate in physics at the University of Virginia. Address: 14 Kent Terrace, Apt. 3, Charlottesville, Va. 22903.

## 1970

**DENNIS F. NOLAN** is a chemist for Kirkman Labs in Portland. Address: 4807 N.E. Tillamook, Portland, Ore. 97213.

**GEORGE W. McLEAN, JR.** is a student at Northwestern School of Law. Address: 0615 S.W. Palatine Hill Road, Box 489, Lewis and Clark College, Portland, Ore. 97219.

**CANDICE BARNICK** is a registered nurse at the University of Oregon Medical School. Address: 12521 S.E. Northview, Milwaukie, Ore.

**MARGARET L. ROUMPF** is the director of Christian Education at the first Presbyterian Church in Salem. Address: 3518 Aster Street, N.W., Salem, Ore. 97304.

**WAYNE W. COOK** is teaching literature, geography and general science at two Catholic elementary schools in Sacramento, Calif. Address: 725 Howe Avenue, Apt. 30, Sacramento, Calif. 95625.

**KATHLEEN PEEL NAHORNEY** (Mrs. Jim) and husband are both teaching sixth grade in Eugene. Address: 2247 Brittany, Eugene, Ore. 97405.

**GRANT I. SHARP** is the owner and president of Sharp Construction Company. Address: Rt. 2, Box 51, Molalla, Ore.

**MICHAEL W. BENNETT** is a student at New York University Graduate School. Address: One Fifth Avenue, Room 10C, New York City, N.Y. 10003.

**DAVID R. WOSTER** is a biology teacher at Clackamas High School in Milwaukie, Ore. Address: 18484 Abernathy Lane, S.E., Apt. 18, Milwaukie, Ore.

**ANDREW N. HOLMES** is a customs inspector for the U.S. Government in Alaska. Address: Mile 1221-8 Alaska Highway, Via Tok, Alaska 99780.

**DONNA M. DUNBAR** is a staff assistant for Senator Mark O. Hatfield in his Salem office. Address: 4098 Market Street, N.E., Salem, Ore. 97301.

**DAVID T. BLOYE** is a management trainee for J. C. Penney's in Portland's Lloyd Center. Address: 859 S.W. Broadway Drive, Portland, Ore.

**STEPHEN K. YAMASHIRO** (L) is a hearings officer for the Hawaii Public Employment Relations Board in Honolulu, Hawaii. Address: 927 Prospect Street, Apt. 605, Honolulu, Hawaii.

**SUSAN E. JOHNSON HOWSLEY** (Mrs. Richard J.) is an analyst for the U.S. Government. Address: 2150 Evans Court, Falls Church, Va.

**PATRICIA A. MCKINLEY** is a medical technologist at the University of Oregon Medical School. Address: 288 Stoneway Drive N.W., Salem, Ore. 97304.

**THOMAS and LINDA BARTO WEATHERS** live in California, where he is a cost analyst for the Ford Motor Company in Milpitas. Address: 3767 Vineyard Avenue, Pleasanton, Calif.

**KIMBALL R. LOGAN** is an insurance salesman for Equitable of Iowa in Salem, Ore. Address: 1148 S.E. Oak Street, Salem, Ore. 97301.

**LINDA C. ROGERS** is teaching in the California School System. Address: 3230 B Davis Street, Oakland, Calif. 94601.

**SHELLEY A. MEDARIS** is the secretary to the Editor-in-Chief of the Little, Brown and Company in Boston, Mass. Address: 451 Park Drive, Apt. 4, Boston, Mass. 02215.

**RUSH M. HOAG** recently completed his second year at the University of Oregon School of Law. Permanent Address: 139 Waverly Place Mt. View, Calif. 90400.

**JEFF G. WEINSTEIN** is a junior executive with the Vancouver Furniture Company. Address: 8104 Manzanita Way, Vancouver, Wash. 98661.

**KALAPOLI PAONGO** is now teaching history in a secondary school in Tonga, Washington, D.C. Address: 312 Wayne Street S., Arlington, Va. 22244.

**STEPHEN and NANCY WILES WELLS** '69 are living in Portland, where he is half owner of Gene's Hauling and she is a truck driver for Loomis Courier Service. Address: 6021 S.E. Milwaukie Avenue, Portland, Ore. 97202.

**THOMAS S. FELIX** is a carpenter in North Carolina. Address: 6575 New Market Way, Raleigh, N.C. 27609.

**ALFRED T. FRITTS** is the public relations director of the Bakersfield Californian in Bakersfield. Address: 2630 Terrace Way, Bakersfield, Calif. 93309.

**CRAIG T. DANIELSON** is a communications officer in the U.S. Navy, stationed on the USS Pensacola with his homebase in Little Creek, Norfolk, Va. 97045.

**SANFORD M. KAWANA** is teaching math and coaching football and wrestling at Kaimuki High School in Honolulu, Hawaii. Address: 1823 Bertram Street, Honolulu, Hawaii 9816.

**DIANE M. MCKENNEY** is a part-time student at Stanford University, where she is working at the Stanford Center for Research and Development in Teaching. Address: 2900 Ross Road, Palo Alto, Calif. 94303.

**CHRISTINE SLEETER** is doing substitute teaching in the Seattle high schools. Address: 2505 14th Avenue S., Apt. 223, Seattle, Wash. 98144.

**ARMY SPEC. 4 DWIGHT E. ANDERSON** recently completed an electronics specialist course at the Army Signal School in Ft. Monmouth, N.J.

**LT. MARSHALL N. DRACK** is currently flying KC-135s for Strategic Air Command. Upon completion of his tour of duty, Drack plans to



**DEAN EMERITUS Robert D. Gregg** was awarded an honorary Doctor of Humanities degree during May Commencement ceremonies.

**THOMAS L. LAFOLLETT** is a special investigator for the U.S. Government and recently was transferred to Reno, Nevada, where he resides with his family at 7225 Gemstone Drive.

**GARY S. PEDERSEN** is a special agent, Office of Special Investigation, for the U.S. Air Force. Address: 8344 Pine Street, Fairchild, AFB, Wash. 98011.

**LEWIS KING** (L70) is an attorney-at-law with the firm of Shuler, Rankins, Meyers, Walsh and Reagon in Portland. He is married to the former **MELINDA JACK KING** '68. Address: 3835 N.E. Hazel-fern Place, Portland, Ore.

**ALAN J. STRANSKY** is an intern at Walter Reed Hospital. Address: 7019 Georgia Avenue, N.W., Washington, D.C. 20012.

**KENNETH B. SOLBERG** is a teaching assistant and doctoral candidate at the University of Wisconsin. Address: 1493 Carver, Apt. 10, Madison, Wisc. 53713.

**JUDITH HARDING STEIN** is an airport supervisor for the Royal Hawaiian Air Service in the Kaanapali Airport, Hawaii. Address: 149B Hahikuli Avenue, Lahaina, Maui, Hawaii.

**RICHARD W. BUCK** is an Associated Press news editor in Des Moines, Iowa. Address: 2405 48 Street, Des Moines, Iowa 50310.

**GEORGE L. HANSETH** is an investment banker for Smith, Barney and Co., Inc. in Seattle, Wash. Address: 14008 Edgewater Lane, N.E., Seattle, Wash.

**WILLIAM and MARILEE SINES ROSSI** '68 are living in California, where he is the general manager of Teevan Painting in Burlingame. Address: 135 Alta Vista, Woodside, Calif. 94062.

**LOIS M. HORTON** has finished her master's degree in special education at the University of Oregon and is now teaching 3rd and 4th grade in Seattle. Address: 3614 N.E. 73rd Place, No. 3, Seattle, Wash. 98115.

**JAMES R. LUDDERS** is employed by Flying Tiger Line in Los Angeles, Calif. and is married to the former Ann Nyline of Vancouver, B.C. Address: 963 Virginia Street, Apt. 4, El Segundo, Calif. 90245.

**HAROLYN HEEB ERBELE** (Mrs. James) has moved to a new home with her husband, who works for Duimo Victor Company, and new son, James W. Address: 886 Rivera Street, Milpitas, Calif. 95035.

**WILLIAM R. ALBERGER** is a legislative assistant to Ore. Rep. Al Ullman and will finish law school at Georgetown University in Dec., 1972. His wife, Patti, is a writer-editor for the news bureau at American University. Address: 1566 Mt. Eagle Place, Alexandria, Virginia 22302.

**OWEN R. and PEGGY SHAFFER WHITE** '68 are residents of Eugene, Ore., where he is the director of Research and Evaluation for The Resource Center for Handicapped Children at the University of Oregon. She is taking the year off from teaching. Address: 3164 Admiral, Eugene, Ore. 97402.

**KATHLEEN VRADENBURG RITCHIE** (Mrs. Kenneth) has moved with her husband, who is at intern at the Santa Clara Medical Center, to 1144 Delma Manor Lane, Apt. 4, San Jose, Calif. 95128.

**GEORGE THEISEN** is a pilot in the U.S. Air Force and plans to leave the service at the end of his active duty commitment in approximately one year. He is married to the former **JEAN LUNDSTROM** '66. Address: 30-352B Cherry Drive, APO Seattle 98742.



attend law school and after graduating, go into estate planning with his father. Address: PSC 754, Kincheloe AFB, Michigan 48788.

**CAROL A. MILLER NYLANDER** is a high school home economics teacher. Address: 1459 City View, Eugene, Ore. 97402.

**KAREN I. FLEMING HOWARD** (Mrs. William R., Jr.) is a homemaker in Colorado. Address: 8853 Princeton Street, Westminster, Colo. 80030.

**DEBORAH L. DEAN** is teaching in Washington. Address: 4700 - 176th S.W., A112, Lynnwood, Wash. 98036.

**PATRICK CAMPBELL** is a first lieutenant in the U.S. Air Force and will leave for a tour of duty in Thailand this fall. His wife the former **KAREN COOPER** '70 will remain in Salem. Address: 3381 River Rd., N. Salem, Ore. 97303.

**GAY P. LANGE SCOTT** is a registered nurse in Washington. Address: 110 A. No. 56th Avenue, Apt. 3, Yakima, Wash. 98902.

**MARILYN JANE PALMER HUFFMAN** resides in Portland. Address: 2038 N. McClellan, Portland, Ore. 97217.

**NANCY L. ELLIS BRYSON** is a homemaker in Lubbock, Texas. Address: 2902 3rd Place, Apt. G, Lubbock, Texas 79415.

**NANCY D. WELLS WILSON** (Mrs. Michael) is a homemaker in Pensacola, Florida, where her husband is stationed in the U.S. Navy.



**DOUG HOUSER '57**, left, President of the Alumni Association, presents a plaque of appreciation to outgoing president **Dale Gustafson '56** during the May Alumni Banquet. **Stan Ryals '49** was named President-Elect to succeed Houser in two years.

## 1971

**WILLIAM T. SHELTON** is an orderly at Hoag Memorial Hospital in Newport Beach, Calif. Address: 229 - 17th Street, Seal Beach, Calif.

**JAMES H. SMITH (L)** is now associated with the law firm of COLLEY (KENNETH H. L. '59) and Morray, in Corvallis, Ore. Address: 1331 13th N.W., Corvallis, Oregon 97330.

**ROELOF W. WIJBRANDUS** is working on his master's degree in Germany. He is married to the former **JULIE HALL '72**. Address: Eggstrasse 15 bei Frau Breuer, D-7800 Freiburg im Breisgau, West Germany.

**LEONARD A. VALADEZ** is a graduate student at Columbia University in New York City. Address: 616 W. 114th Street, Apt. 3R, New York City, N.Y. 10025.

**DAVID N. RAGES** is a teacher at Nairobi Elementary School in Nairobi, Calif. Address: 1007 Beech Street, E. Palo Alto, Calif. 94303.

**STEPHEN B. ALKIRE** is a trainee in the Office of Urban Renewal, U.S. Government, Salem, Ore. Address: 1071 Ruge N.W., Salem, Oregon 97304.

**RANDALL S. NELSON** is a dishwasher and part-time cook in Mama Rosa's Restaurant in West Bank, Minneapolis, Minn. Address: 2112 Portland S., Minneapolis, Minn.

**DEBORAH E. SPEER** is a newspaper sales service representative for Boise Cascade in Portland, Ore. Address: 847 S.W. Broadway Drive, Portland, Ore.

**LINDA ROUGH** is in sales and advertising for Rainier Brewing Company in Seattle, Wash.; also is attending night school in court reporting; and is managing an apartment complex. Address: 601 - 14th East, Apt. 304, Seattle, Wash. 98102.

**PAMELA S. BUTLER** is a secretary for Black and Company. Address: 9765 Southwest Hall Blvd., Tigard, Ore.

**JACQUELYN AGEE** is a secretary for Cahners Publishing Company in Boston, Mass. Address: 451 Park Drive, Apt. 4, Boston, Mass.

**JAMES W. KUBITZ** is president and manager of the Professional Maintenance Corporation in Alaska. Address: 2609 W. 32nd, Spenard, Alaska.

**MARILYN FULLMER** will begin work on her master's degree in counseling and guidance at Cornell University this fall. Address: 2133 St. Mary's Drive, Salt Lake City, Utah 84108.

**KRISTE L. HENDERSON** is an elementary vocal music teacher in the Lincoln County School District, Burgess School, Toledo, Ore. Address: P.O. 159, Newport, Ore. 97365.

**JAMES P. WALL (L)** is an associate in the Portland law firm of Morrison, Bailey, Dunn, Cohen and Miller. Address: 8882 Ravena Dr., N., Salem, Ore. 97303.

**THOMAS E. ANGELO (L)** is an attorney for the U.S. Department of Labor, Civil Rights Division, Washington, D.C. Address: 3229 Valley Drive, Alexandria, Va. 22302.

**JOHN A. WALLACE** is an account executive for Radio KPAM-FM in Portland, Ore. Address: 580 First Street, Apt. 7, Lake Oswego, Ore. 97034.

**LINDA S. SWANSON** is teaching French and history at Cedar Park Intermediate School, Beaverton, Ore. Address: 7375 S.W. Sharon Drive, Portland, Ore.

**CHRISTOPHER SAVEREID** is the set designer and technical director for the Portland Civic Theatre in Portland, Ore. Address: 2068 N.W. Flanders, Apt. 8, Portland, Ore. 97209.

**GRANT E. HANSEN (L)** is in the U.S. Air Force, stationed in Great Falls, Mont. Address: 409-50th Street S., Apt. 2, Great Falls, Mont.

**GORDON R. WISEMAN** is a student at the University of Oregon and a part-time millworker. Address: 1450 Golding Avenue, Eugene, Ore. 97402.

**LYLE F. ADAMS (L)** is a tax accountant for Arthur Anderson and Company in Portland, Ore. Address: 2805 S.W. Troy, Portland, Ore. 97219.

**SUZANNE R. LEWIS** is a governess in Cambridge, Mass. Address: 82 Avon Hill Street, Cambridge, Mass. 02140.

**BRUCE BOTELHO** is now an associate pastor for the Ketchikan United Methodist Church and a part-time District Scout Executive for the S.E. Alaska Area Council Boy Scouts of America. Address: P.O. Box 1410, Ketchikan, Alaska 99901.

**SUSAN GARRISON REUTER** (Mrs. Thomas J.) is the Community Services Advisor for Development / Housing / Urban Renewal for the City of Salem. Address: 1563 Court N.E., Salem, Ore. 97301.

**BRUCE A. and LINDA PATRICK WRIGHT** are living in Tucson, Arizona, where she is working for the First National Bank of Arizona and he is working on his master's degree in government at the University of Arizona. Address: 315 E. Blackledge Avenue, Apt. 8, Tucson, Ariz.

**LYNN M. DELANEY** is working for the Camlin Hotel in Seattle, while working and studying for a career in singing. Address: 1218 N.E. 75th, Seattle, Wash. 98105.

**BRUCE A. PAHL** is a life insurance agent in Carlsbad, Calif. Address: 2717 Wilson Street, Carlsbad, Calif. 92008.

**HELEN D. CHAMBERS** is a substitute English teacher in the Anchorage Borough School District. Address: 2654 Bern Place, Anchorage, Alaska 99504.

**JAMES E. CRAWFORD** has joined the Peace Corps and is working in a wheat distribution program in Afghanistan aimed at stemming the after effects of the worst drought in the country's history. He taught English in a high school in Afghanistan before transferring to the emergency program in December. He can be reached by writing: 743 N.E. 61st Street, Portland, Ore.

## 1972

**MARTHA C. THOMAS** is a student nurse at the University of Oregon Medical School of Nursing. Address: 707 S.W. Campus Drive, Portland, Ore. 97201.

**CATHERINE A. SELLERS** is an insurance secretary for a bank in Bellevue, Wash. Address: 12622 S.E. 4th Place, Bellevue, Wash. 98006.

**KELLY CASSIDY PUCKETT** (Mrs. Robert) is a student at the University of California at Los Angeles. She is married to **ROBERT PUCKETT '70**. Address: 1668 Calby, Los Angeles, Calif. 90025.

**CAROL F. GANZ** recently graduated from Fresno State, majoring in radio-TV. Address: Rt. 1, Box 165, Myrtle Creek, Ore. 97457.

**EILEEN HERRING** is currently unemployed but is spending her time mushroom-hunting and gardening. Address: 1860 W. 12th Avenue, Eugene, Ore. 97402.

**MARSHA SHERMAN** will spend the next three years in Boston, Mass. attending Boston University School of Nursing. She will also work as a nurse's aid in a Boston hospital. Other WU grads attending Boston University are **JACKIE AGEE** and **SHELLEY MEDARIS**, both of the class of '71.

**ROGER R. HURM** and his wife Diana live in Portland, where he is a rental agent for Avis Rent-a-Car. Address: 2351 S.E. 124th, Apt. 9, Portland, Ore. 97223.

## BIRTHS

**STUART '62 & L'65** and **PATRICIA EVANS HALL '63**, a girl, Amy Evans Hall, born July 31, 1971. He is an attorney for the U.S. Government. Address: 116 Lillian Lane, Silver Springs, Md.

**BENNETT R. WOODS '67**, a son, Benjamin, born July 14, 1972. Woods is a lieutenant in the U.S. Navy. Address: VF-211, FPO San Francisco, Calif. 96601.

**DOUGLAS '69** and **JOY GUSTAFSON GILMORE '69**, a girl, born Jan. 18, 1972. Gilmore is a sales representative for Levi Strauss and Company in Great Falls, Mont. Address: 4251 Central Avenue, Apt. 2, Great Falls, Mont.

**MARJORIE MIKKELSEN ENNEKING '62** (Mrs. Gene), a son, Brian Joseph, born March 8, 1972. Parents are both on the faculty at Portland State University. Address: 6845 S.W. Burlingame Ave., Portland, Ore. 97219.

**KENDALL and JOAN KANE ANDERSON** both '65, a daughter, Amy Jennifer, born June 6, 1972. Address: 408 Cedar Path Drive, Homewood, Ala. 35209.

**JOHN GREG and JOYCE HERINGER TOPPING** both '63, a daughter, Linda Jean, born Oct. 25, 1971. Address: 1819 Hoover Drive, Normal, Illinois 61761.

**ARTHUR and THERESA OSTLUND BROOKS** both '70, a daughter, Stephanie Anne, born April 30, 1972. Address: 1732 Rucker, Everett, Wash. 98201.

**RALPH LITCHFIELD, M.D. '60**, a daughter, Julie, born January, 1972. Address: 752 E. 8th Street, Bend, Ore. 97701.

**DR. KENNETH D. and MARY ANNE DORSCH ROST** both '68, a son, Jeffrey, born Aug. 11, 1971. Address: Box 708 C, Ogden, Utah 84404.

**WILLIAM A. and JOAN BENSON WHEELER** both '63, a daughter, Gwendolyn Louise, born June 29, 1971. Address: 19707 N.E. 156th Place, Woodinville, Wash. 98072.

**JON A. '63** and **ALICE BRYANT STEINER '64**, a son, Timothy Pieter, born Nov. 21, 1971. Address: 2001 E. McGraw, Seattle, Wash. 98102.

**BILL R. and BETTY ANNE SHELTON RITCHIE** both '66, twins, Geoffrey Arthur and Lisa Kathryn, born Nov. 4, 1971. Address: 1317 - 37th, Bellingham, Wash. 98225.

**EDWARD W. KNAPPE '61** and his wife Mary, daughter, Gretchen Elizabeth, born April 2, 1972. Address: 7027 - 17th N.E., Seattle, Wash. 98115.

**JOHN (L'65) and SUSAN BUSH-NELL MARANDAS '64**, a son, John Steve John (John "J"), born March 31, 1972. Address: 17950 Royce Way, Lake Oswego, Ore. 97034.

**ROBERT S. ELDER '63** and his wife Cory, a son, Matthew Cruz, born April 26, 1972. Address: 1528 Northgate Square, No. 21B, Reston, VA. 22070.

**DR. LAURENCE R. FOSTER '66** and his wife Linda, a daughter, Jennifer Noel, born Dec. 17, 1971. Address: 200 W. 1000 N. Gordon Ave., Layton, Utah 84041.

**DR. CLARK O. ANDERSON '64** and his wife Elaine, a boy, Keith Miller, born April 22, 1972. Address: 934 Acacia Lane, Davis, CA 95616.

**KENNETH '64 & L'67** and **TERRI MITCHELL STEWART '65**, a daughter, Jennifer Lynne, born Aug. 3, 1971. Address: 5792 Garnet Way, Milwaukee, Ore.

**EDWIN '58** and **JO ANN (JODY) MILLS EVERTS '59**, a daughter, Megan, born Dec. 18, 1971. Address: 17200 S.W. Rigert Rd., Beaverton, Ore.

**ROBERT '88** and **SHANA BECHTEL JOHNSTONE '69**, a son, Evan Blain, born Sept. 2, 1971. Address: 255 Riverview Apt. 3, Green River, Wyo. 82035.

**ALBERT A. NEIMANN '62**, a daughter, Amy Alice, born Oct. 21, 1971. Address: 1603 Lilac Lane, Antioch, CA. 94509.

**BRUCE E. BUZZELL '61**, a son, Steven, born November, 1971. Address: 2217 S. Edgewood, Seaside, Ore. 97138.

**JOAN DOUGLAS CAMPBELL '63** (Mrs. Hugh), a son, Douglas Scott, born Jan. 18, 1972. Address: P.O. Box 71, Gear Valley, CA 95223.

**DR. WARREN '58** and **ANNA ROSBERGS CAMPBELL '58**, a daughter, Susan Lori, born June 7, 1971. Address: Rt. 1, Box 191, River Falls, Wis. 54022.

**KATHERINE STAFFORD SCHMIDT '68** (Mrs. John), a daughter, Anne Marie, born Nov. 14, 1971. Address: P.O. Box 36, Halsey, Ore. 97348.

**DIANNE WILSON NICHOLSON '64** (Mrs. Bruce), a son, Scott David, born March 15, 1972. Address: 16636 Dearborn, Sepulveda, CA 91343.

**ELIZABETH CARTER RILEY '58** (Mrs. Gary), a son, Lawrence Gary Riley, Jr., born Sept. 19, 1971. Address: 43627 N. Sugar Street, Lancaster, CA. 93534.

**WILLIAM B. MOORE (L'63)** and his wife Dawn, a daughter, Teresa Margaret, born February 24, 1971. Address: Rt. 8, Box 9637, Bainbridge Island, Wash. 98110.

**PATRICIA RANTON LEWIS '65** (Mrs. John C.), a son, Cameron

Fielding Lewis, born Oct. 22, 1971. Address: 2225 Greentree Road, Lake Oswego, Ore. 97034.

**SUSAN GARNER GALLINO '66** (Mrs. Gary), a daughter, Karen Elizabeth, born July 22, 1971. Address: 4465 S.W. 202nd, Aloha, Ore. 97006.

**MARGARET HORN DOMAN '68** (Mrs. Steve), a daughter, Jennifer Elaine, born Feb. 21, 1972. Address: 6630 - 30th Ave. N.E., Seattle, Wash. 98115.

**NANCY CROTCHETT STEINHOFF '68** (Mrs. Phil), a daughter, Jennifer Ruth, born Dec. 4, 1971. Address: 106 Spring, Oregon, Wis. 53575.

**KATHRYN BEATY PASSMORE '63** (Mrs. John E.), a son, John Clifton, born July 23, 1970. Address: 1757 Dowell Rd., Grants Pass, Ore. 97526.

**MARY R. BENCH ASHLEY '70** (Mrs. Harold), a son, Doran Wade, born Jan. 21, 1972. Address: 6648 N. A Street, Springfield, Ore. 97477.

**BARBARA NELSON SESNON '63** (Mrs. J. Bott), a son, Robert Freeman, born Dec. 7, 1971. Address: 3314 N.W. 75th Street, Seattle, Wash. 98107.

**IVONA RANDALL SCHACKER '64** (Mrs. Donald J.), a daughter, Sarah Elizabeth, born Aug. 5, 1971. Address: 1574 Parrot, Sunnyvale, CA. 94087.

**ALEXANDER '64** and **MARGARET SAWYER FREW '65**, a daughter, Barbara Jean, born Jan. 9, 1972. Address: 161 Eureka, San Francisco, CA. 94114.

**LUCY CHRISTENSEN CAMPEN '66** (Mrs. Jeffrey), a daughter, Cari Elizabeth, born July, 1971. Address: 3806 Grand Ave., Oakland, CA 94610.

**MICHAEL F. '66** and **MARILYN LUTHER EGANS '67**, a daughter, Tamara Diane, born Jan. 31, 1972. Address: 2500 Glenwood St., Anchorage, Alaska 99504.

## DEATHS

Vincenzo Orsi, husband of **MARGARET ATWOOD ORSI '50**, died April 30, during heart surgery in a Detroit, Mich. hospital. A native of Naples, Italy, Orsi had been a city engineer in Albany, Ore. before his retirement in 1970. He is survived by Mrs. Orsi and four children.

**LUCILLE TUCKER PAULUS '23** (Mrs. Otto) died Feb. 15 in Laguna Beach, Calif. She was the widow of longtime Salem attorney Otto Paulus.

**JOHN C. JOHNSON '09** died Dec. 10, 1971 in Eugene, Ore.

**BEULAH FANNING MOORE '26** died Sept. 5, 1971 in Oregon City, Oregon.

**ERNEST F. GORDON '52** and **L'58**, died April 14, 1972 in Klamath Falls, Ore., where he was a partner with law firm of Ganong, Gordon and Sisemore. He is survived by his wife Beryl and two children.

**DR. R. P. MORTENSEN '04**, San Francisco, Calif., died Oct. 24, 1971 at the age of 96.

**MARY EVELINE GALBREATH '06**, a life-long resident of the Portland area and a vocal music teacher for more than 50 years, died at the age of 76. There are no surviving relatives.

**EUNICE MILLER TOBIE '15** (Mrs. Harvey E.) died April 11, 1972 in Ashland, Ore.

**GERTRUDE JOHNSON O'FLYING** (Mrs. C.W.), former resident of Salem, Ore., died April 13, 1972 at the age of 91 in Carlsbad, New Mexico. She is survived by a son Richard M., Carlsbad; and a daughter, Mrs. L. D. Torea, San Francisco, Calif.

**MAIDA CALDWELL ESTES '29** died Sept., 1971 in Joseph, Ore.

**VIVIAN WIDMER '37**, long-time home economist in Washington, died Feb. 5, 1972 at Harrison Memorial Hospital in Bremerton, Wash. She is survived by a brother, Walter J. Widmer of Portland and three nieces.

**DOROTHY LUCILE LIBBY CROSS '49** died Feb. 22, 1972 from cancer. Survivors are her husband, Jack Cross, Seattle, Wash., and two children.

**RAY HERBERT LAFKY '34 & L'34** a life-long Salem resident and well-known attorney, died May 31, 1972 of a heart condition. Lafky was the first honorary mayor of Keizer in the late 1940s. Survivors are his widow Rena and three children.

**VERNE D. BAIN '23**, former resident of Salem where he was assistant state superintendent of public instruction, died March 5, 1972 at a Portland nursing home. He is survived by his widow Pauline and two children of Portland.

**RAYMOND RICE '67**, a college mathematics instructor, died March, 1972 of cancer in a Santa Monica,

Calif. hospital. He was a native and resident of the Silverton and Monmouth areas most of his life. He is survived by his parents, Mr. and Mrs. Jesse Rice of Salem, Ore.

**PROF. WILLIAM ALFRED MANNING '00**, a Stanford University mathematician, died at his home in Stanford, Calif. in February, 1972 at the age of 95. Born in Salem, Ore., he taught at Stanford 42 years before retiring in 1942. He was given Stanford's Distinguished Alumnus Award last year.

**JAMES B. BEDDINGFIELD, SR. L'22**, a Coos Bay, Ore. attorney since 1929, died Feb. 26, 1972 in Coos Bay. During his career as a lawyer, Beddingfield served as city attorney for Coos Bay and district attorney of Coos County. He is survived by his widow Virginia and two children.

**JEFFREY BRUCE KNOX '69** died Jan. 24, 1972 at his home in Longview, Wash. He was 24 years old. At Willamette, he was an honor student and a top athlete. He is survived by his parents, Mr. and Mrs. Edwin B. Knox of Longview.

**BYRON D. ARNOLD '24**, La Puente, Calif., died Dec. 25, 1971. He is survived by his wife.

**GERALD W. SHERMAN '36** died Nov. 12, 1971 in Castro Valley, Calif. He is survived by his wife **DOROTHY WRIGHT SHERMAN '40**, Castro Valley.

**ERIC A. SMITH '71** was killed March 14, 1972 in an automobile accident. He is survived by his mother, Mrs. Lorraine Smith Buchanan, Gold Bar, Wash.

**STEPHEN FARMER '73** died March 28, 1972. He is survived by his parents, Mrs. Donna Farmer, Powers, Ore. and Stephen Farmer, Grand Ronde, Ore.

**IRMA FANNING SHOTWELL '22** died Dec. 23, 1971 of a heart attack. She is survived by her husband, **DR. CECIL SHOTWELL '22** of Los Angeles, Calif.

**BETTY COOPER COYNER '44** died Jan. 15, 1972 in Bend, Ore. She is survived by her husband, **CRAIG COYNER '43**, Bend, Ore.

## MARRIAGES

**ANN M. BOWMAN '65** to Robert Mitchell Landau, Nov. 30, 1971. Address: 2000 Huntington Ave., Apt. 923, Alexandria, VA. 22303.

**JULIE JEANNE BUSCH '71** to **BRUCE H. BURLINGTON '72**, Jan. 15, 1972. Address: 217 Laurel Place, Apt. 14, San Rafael, CA. 94901.

**MAX BOESE '65** and **EARLINE ANDERSON '68**, Jan. 8, 1972. Address: I-11, 2 Chome, Sakura, Setagaya-ku, Tokyo 156, Japan.

**DAVID E. GOOD '67** to Catherine Magill, April 8, 1972. Address: 4916 Harbord Drive, Oakland, CA 94618.

**PAMELA EDGELL '69** to Frank W. Steidle, Jr., July 31, 1971. Address: 20200 Lucille Ave., No. 33, Cupertino, CA. 95014.

**CATHERINE KENNEDY McCALLISTER '55** to Frank L. Bear, June 17, 1972. Address: 300 Parkview, Milton-Freewater, Ore. 97862.

**DEBORAH A. MOY '72** to Gregory J. Frank, Dec. 30, 1970. Address: 11225 N.E. Prescott, Portland, Ore. 97230.

**LEONA L. HAVENS '59** to H. George Hart, Dec. 19, 1971. Address: 2360 Heidi Place, Santa Rosa, CA. 95401.

**GAYLE D. SHAFFORD '68** to Lawrence D. Husted, Jan. 8, 1972. Address: 237 Cummings Lane, N., Salem, Ore. 97303.

**JULIE A. HARPER '72** to **STEVE O'DONNELL '72**. Address: 727 N. Garden St., Bellingham, Wash.

**AKIKO J. YOROZU '70** to Carl Larson. Address: 215 S.E. Twin Maple Drive, Apt. C, Corvallis, Ore.

**MARIANNE E. KELLUM '70** and Philip Richardson. Address: Route 4, Box 377, Muncie, Ind. 47302.

**LEANNE SCARFF '70** to Greg Martin. Address: 322 8th Avenue West, Kirkland, Wash. 98033.

**ELIZABETH L. OUGH '68** to George Molcan. Address: 10655 S.W. Walker Road, Beaverton, Ore. 97005.

**MOLLIE E. LOWERY '72** to Derek A. Wyatt, August, 1971. Address: 1032 Meadowbrook Road, Jackson, Miss. 39206.

**COURTNEY ANN WEISBERG '70** to Claud A. Johnson, Jr. Address: 1123 - 167th Ave. S.E., Bellevue, Wash. 98004.

**BEVERLY J. JAECK '68** to David D. Johnson, III. Address: 630 Park Street, No. G, Charlottesville, VA. 22901.

**SUSAN MICHELSEN '67** to Dean Nowacki, July 3, 1971. Address: 2124 Rock Street, No. 35, Mt. View, CA. 94040.

Editor's Note: The following commentary on Oregon's environment is from junior Environmental Science major Kathy Kaster, one of the 21 students who participated in the post-session Environmental Field Studies course described on page 4.

Oregonians today are bombarded with the slogans pro and con of environmental causes. On one side the prophets of environmental doom depict Oregon as being on the verge of falling into a polluted abyss from which there is no return, the evils of clear-cutting and other forestry practices are decried, there is a call to return to the "good old days" when streams ran pure, wildlife lived without fear or danger and the only sounds in the forests were the chirping of songbirds and the buzzing of insects.

Opposing this are cries of "Oregonians can't live on pure air, clean water and picture postcard scenery alone." There is also a tendency for targets of anti-pollution propaganda to exploit the environmental conscious public by touting their own efforts in protecting and cleaning up the environment, usually with a great deal of exaggeration as to the actual importance of their actions.

### Not a simple choice

Both sides would have the public believe that the issue is a simple choice — clean environment or jobs and progress.

But on our trip around the state we discovered that it does not have to be a one-or-the-other type choice, nor in actuality can it be. There is little likelihood of returning to the pre-atomic age nor can we continue to use our resources as if they were infinite.

In studying Oregon, the Environmental Field Studies class found the state to be very progressive in coping with the dilemma of environmental control. Since 1970, with the creation of the Department of Environmental Quality, Oregon has enacted some of the strictest environmental control laws in the country.

The DEQ has put all major violators of pollution regulations on compliance schedules, making them plan and execute a program of pollution control which will bring them up to required standards within a reasonable period of time.

All new industries and communities are required to be in compliance with DEQ standards as soon as they open. We talked with many industry representatives along the way about these compliance schedules. None foresaw any major difficulty in meeting the deadlines.

### No precedents for standards

One area of controversy that was brought up many times in talking with both representatives of government and industry was the setting of the DEQ standards. There are no precedents to go by and until just recently not much research was done in the area of pollution control. Consequently, the standards come under fire from both sides and will probably undergo many changes in the next few years as more information becomes available.

In studying the environmental situation in Oregon, water is an important subject. The areas and amount of future growth in Oregon all depend upon availability of clean, useable water. At this time there is more than enough water for everyone, industry as well as citizenry, over most of the state.

The main concern today is to keep the water sources we do have pure enough to continue using them. Rivers and streams are self-cleaning to a certain point and agencies such as the DEQ and Environmental Protection Agency are working to allow streams to remain self-cleaning even as the population grows.

### Ocean water in danger

But water pollution in Oregon is not limited to freshwater sources alone. The ocean is also in danger due to the dumping of wastes into it. Generally, people are less aware of this due to its size and because most concern is directed towards freshwater sources.

About 95% of all sea life is produced on the shoreline out to where the water reaches a depth of

## Viewing the Complexity of Environmental Control

By  
Kathy Kaster

600 fathoms, a distance varying from a few miles to 15 or farther. It is in this region that nearly all fishing takes place. Yet some towns and industries are still dumping raw sewage and wastes into the sea.

One paper mill we visited on the southern Oregon coast has a permit to pump wastes through a 3,000 foot pipeline into the sea. Our guide made much of the 3,000 foot figure but was unprepared to answer questions about the effects of their wastes upon sea life.

In the area of air pollution the DEQ has been successful in closing down nearly all wigwam slash burners in the state as well as setting deadlines to end open field burning. Other air pollution violators have been placed on compliance schedules to cut down the amounts of visible and non-visible pollutants.

### Clear-cutting modified

Under the heading of visible pollution is the practice of clear-cutting in logging operations. In talking with foresters, both public and private, we learned that there has been much modification of this method of logging over the past few years. When used correctly clear-cutting is actually a good as well as the most efficient means of logging.

In the past clear-cutting deserved the unpleasant connotations it carried with it; ugly barren hillsides piled high with slash, often left so for years before reseeding by natural means took place. Logs were wasted that were too small or otherwise imperfect. The idea that there was always more timber over the next ridge allowed this to continue until recent times.

Now most foresters agree that the ideal method of timber farming is sustained yield-cutting only as much timber as the forest will replace in a year so that the forest will remain at the same size in perpetuity.

The foresters we talked with on public lands practice clear-cutting in combination with sustained yield management. Patches of timber ranging from 40 acres down to 10 are clear-cut where once hundreds of acres were clear-cut. The smaller cuts are then reforested by hand with small trees along with some natural reseeding from surrounding timber stands.

### Log waste reduced

The amount of waste in logging is greatly reduced as all the trees in a stand are about the same size. By selective thinning of the patches while the trees are still small it is possible to actually increase the yield of quality timber.

As man increases in number he encounters a myriad of environmental conflicts associated with a large population. In Oregon one of these problems has been the growth of housing developments which are spreading across prime farmland in the Willamette Valley.

As more and more farmland is taken out of production for housing purposes the problems of finding substitute farmland for food production and providing necessary services such as sewer and water to these developments keep cropping up.

Salem is attempting to regulate its sprawl with a proposed urban growth boundary which has stirred up a great deal of controversy. So far no other areas have taken any such action.

Eastern Oregon still has fertile land unused but the problem of adequate water makes farming impractical at present.

Not only permanent housing developments are growing but also recreational.

### Scenic views threatened

In timbered areas of the Cascades, scenic areas of the coast and the ranges and deserts of eastern Oregon resort developments and condominiums are spreading, threatening not only scenic views but also the plant and wildlife of these areas.

Wildlife refuges help alleviate some of the problems of lack of wilderness where animals can live and breed undisturbed. But even the refuges cannot provide complete protection from man.

At the wildlife refuges we visited around the state, refuge personnel told of poachers and vandals who killed wildlife for sport and left dead and crippled animals behind, often severely decreasing the numbers of an already rare species.

In the next few decades, as Oregon's population increases, the need for power will also increase. As part of a plan to meet this heavier demand, the Trojan Nuclear Power Plant is being constructed. The advantages of nuclear power production lie mainly in its low air and water polluting qualities.

The alternatives to nuclear power, hydroelectricity and fossil-fuel burning plants are both high polluters. But the construction of the Trojan plant on the Columbia River near Rainier has spurred a public outcry, mostly over the location of a nuclear plant so near a large population center such as Portland and the possible detrimental effects upon fish in the Columbia.

### Trojan "virtually leakproof"

We talked with an engineer involved in the design and construction of the Trojan plant about this and learned that the plant and its facilities are being constructed to be virtually radiation leakproof in the event of any natural disaster, including a major earthquake.

He told us that the Atomic Energy Commission has been making surprise inspections throughout the construction to insure that the plant will meet all safety codes.

Water used in the plant will not come into direct contact with any radioactive materials and before its release back into the river will fall through a 400 foot cooling tower which will cool it enough so that it will not cause any measurable temperature increase of the river, he said.

The plant will have approximately 40 barrels of radioactive wastes each year to be disposed of but we were unable to learn of the proposed method of its disposal. In other areas such waste is buried in old mine shafts, sealed and dropped to the ocean floor or deposited in the desert.

### Environmental control "complex"

In traveling around the state, members of the Environmental Field Studies class began to grasp the complexity of the problem of environmental control.

We found that one of the most basic concepts necessary in thinking about the environment is that of time. With this concept in mind, the term pollution takes on a new meaning.

Change is natural, lakes do dry up and new ones are formed, species of animals do die out and are replaced by others, the climate changes from warm to cold and vice-versa. All this is normal. But usually these changes occur so slowly that they are almost imperceptible.

The problem we face today is not change in the environment per se but the increase in the rate of change. Man in many instances is greatly accelerating the rate of change in the environment with little or no knowledge of the results. Because of the far-reaching effects of these results there is cause for everyone to be concerned with environmental control.

The environment of Oregon is part of a larger environment, earth. This interrelatedness means local action to control the environment is limited. Air, water and wildlife know no state boundaries. Any significant effort in the area of environmental control thus will have to be worldwide.

# A Sober Look at Driver Improvement

Willamette Prof exposes drinking-driver myths

Are "social drinkers" the scourge of the nation's highways?

Are stiffer license restrictions, suspensions, or revocations answers to reducing the highway death toll?

Are traffic "accidents" indeed accidents?

Do cups of black coffee and exercise counteract the effects of alcohol on a person's ability to drive?

Because the typical response to these questions is "yes," Noel Kaestner seeks to overcome mythology.

A professor of psychology at Willamette since 1954, Kaestner is a nationally recognized consultant to the Oregon Traffic Safety Commission.

He consults on several federally-financed programs for driver improvement, including the \$2 million Oregon Alcohol Safety Action Project (ASAP), a pilot study drawing national attention.

## Research Reveals Mythology

A vocal critic of the philosophy and practices of "traditional" driver improvement programs, Kaestner says that research is revealing considerable mythology in driver improvement efforts.

One of the myths that has come out of the

**"Our goal is to identify and treat abusive drinker-drivers to help reduce the alcohol-related traffic toll."**

ASAP study regards drinking drivers. "A person arrested for driving while intoxicated (.15 blood-alcohol level) is typically seen as a social drinker to be viewed as the object of sympathy because he was apprehended," said Kaestner. "A frequent judge or jury response is 'there save the grace of God go I.'"

"Sympathy might be warranted, but only because of the hard fact that two-thirds of the drinking drivers caught are long-term, excessive drinkers," he added.

Statistics show that over half of fatal auto collisions involve drunk drivers, with two-thirds of them excessive drinkers. Kaestner says drinking is involved in nearly 85% of the single-car accidents that occur between 9 p.m. and 2 a.m.

## High Blood-Alcohol Level

The average blood-alcohol level (BAL) of convicted drunk drivers during the start of the ASAP study was .21. "The average social drinker would be unable to find his car, let alone drive it, at that level," said Kaestner. "It takes long practice to reach the .21 level, and our goal is to identify and treat these abusive drinker-drivers to help reduce the alcohol-related traffic fatality toll on our highways."

To comprehend better the significance of blood-alcohol levels, one Oregon researcher tested himself at a party. "After one double martini, I was feeling light-headed and my BAL measured .03. A second double martini made me think I was the life of the party. I was in no condition to drive and my BAL measured .06, not even up to the .10 legal level of being under the influence," he said.

Body weight and ingestion of food while drinking effect the BAL, but generally speaking an average person would have to consume about 12 bottles of beer or 7-8 hard liquor drinks in one hour to reach the .15 level. The effect on vision at that level is similar to driving at night with sunglasses on. At .15 BAL, a person with normal 20/20 vision sees at about 20/200, says Kaestner.

## The 'Good Host' Myth

Another myth associated with drinking drivers is that of the "good host."

"The 'good host' is typically characterized as the one who provides a generous opportunity for continuous drinking at a party. A good host would be doing his guests a greater favor if he offered

food before, during and after drinking to slow the rate of alcohol absorption. And the only value of taking black coffee, exercise and/or a cold shower after extensive alcohol consumption is the time it takes. Alcohol oxidizes at about .02 per hour, so a person at .10 blood-alcohol level doesn't get back to normal for about five hours," said Kaestner.

## Questions Punitive Measures

A third myth in driver improvement programs is the value of current punitive actions taken against errant drivers, believes Kaestner. He has long been suspicious of such actions as a means to "improve" drivers.

"It is somewhat paradoxical to expect improvement in a highly-skilled task that is explicitly prohibited from practice when a license has been suspended or revoked," he said.

Definitive data are lacking on the rehabilitative aspects of license suspensions and Kaestner says "a strong case could be made that present policies and procedures are markedly antithetical to the more scientific application of systems analysis and behavior modification." Which is to say that a radical departure from ingrained thinking and practices is essential before driver improvement is improved.

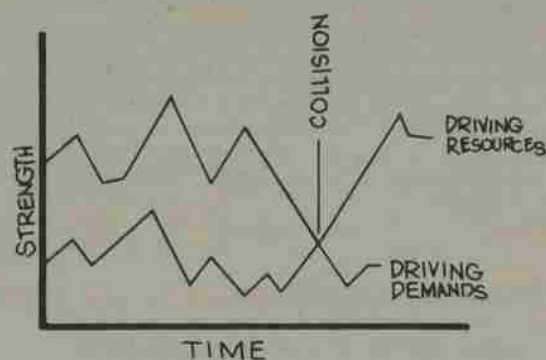
It becomes obvious that Kaestner is casting a fresh look at driver improvement efforts. For example, he questions the use of the word "accident" so commonly associated with traffic collisions.

## "Accident" a Misnomer

"The word 'accident' implies a fortuitous, haphazard, random event that is unanticipated and beyond control, he explains. "In a sense, it is the same as viewing mental illness as being caused by demons, leaving one with the shrugged-shoulder notion that they can't be helped."

When the 'accident' is viewed as what it often is, a collision, then Kaestner believes that constructive responses can be made to the predictable, predisposing elements associated with driver resources and driving demands.

Little in life is a result of a single factor, and many variables are associated with driving. To avoid collisions, a driver has to be able to compensate when the demands of driving — road, light and weather conditions, traffic flow and density — encroach upon the driver's resources — the vehicle, its condition, tires, brakes, and his own mental, emotional and physiological condition. The graph below shows how the strength of driving resources and demands fluctuate over time. If the driver doesn't compensate for when he's tired or when the tires are worn, or he is driving too fast for road conditions, then collisions occur — not as accidents, but as the result of poor compensation, which can be corrected.



How to sharpen driving skills to avoid conditions leading to collisions is what concerns Kaestner and other researchers.

Once the problem is defined as a non-random, predictable consequence of intersection of driving demands and resources, then the scientific method may be brought to bear, believes Kaestner.

## ASAP Aims at Traffic Toll

The Oregon Alcohol Safety Action Project (ASAP) is one such scientific attempt aimed at



reducing the annual traffic toll of about 55,000 deaths in the U.S., over half of which can be attributed to the abuse of alcohol.

The ASAP is employing three countermeasures toward reducing the alcohol-related traffic fatality toll. First, identification of drivers who drink abusively and then drive. Second, decision on the nature of the alcohol problem of the identified drinking-driver. And third, action responses from the community to control, rehabilitate, and assist these drivers as well as educate the general public to the adverse relationships between drinking and driving.

With Portland one of two test cities, the Bureau of Police is assisting in the identification effort by doubling patrols on weekends. Arrests of drivers under the influence of alcohol increased 162% from 1,531 in 1970 to 4,012 in 1971, with 839 attributed directly to special ASAP patrols.

ASAP funds have been allocated to the judicial system to handle the increase of court cases involving drinking drivers. The Multnomah County District Court has established three courts with the

**An average person would have to drink 12 beers in an hour to reach the legal intoxication level.**

sole responsibility of dealing with Drivers Under the Influence of Intoxicating Liquor (DUIIL).

In Portland, every person convicted of DUIIL is subjected to a pre-sentence investigation to determine whether or not he is a problem drinker. The court may assign the person to a five-week orientation-motivation series of meetings and one of the four treatment programs provided by ASAP.

## Judge Offers a Choice

"A judge might give the convicted DUIIL the choice between a \$500 fine and 10 days in jail or assignment to the ASAP treatment programs," said Kaestner.

There are basically four types of treatment modalities used by ASAP: Alcoholics Anonymous, Antabuse only, therapy only, and Antabuse and therapy together.

Every day in Portland, over 100 convicted drunken drivers visit a local drugstore to comply with a court order to swallow the Antabuse, a "cocktail" of orange juice and a drug that makes them seriously ill if they drink alcohol that day.

The Motor Vehicles Division is developing a predictive scale for identifying individuals as problem drinkers prior to their initial arrest for DUIIL. The scale's predictive accuracy will be validated against the diagnostic records generated by the Project.

Driver re-examination of a person convicted of DUIIL a second time is conducted by the Motor Vehicles Division and special attention to the problem drinker is given in the revised Driver's Manual and written driver's test.

### Results Start to Show

"It is a many-faceted program involving many agencies and much cooperation," said Kaestner, "and we're beginning to see some results."

He notes a significant reduction in the average blood-alcohol content of arrested DUIs in Portland. Alcohol related traffic fatalities in test cities Portland and Eugene dropped 25% in 1971 from 1970 while the rest of the state showed an increase of 5%.

If each of the 35 experimental projects authorized for the nation by the U.S. Transportation Department makes such a dent in the traffic toll, the

**"It is somewhat paradoxical to expect improvement in a highly-skilled task that is explicitly prohibited from practice when a driver's license has been suspended."**

U.S. will solidify its position as the leading industrialized nation in the world with the lowest collision rate, according to Kaestner.

Beyond his research, statistical work and dispelling of some myths associated with driver improvement, Kaestner stresses some 'common sense' precautions that all drivers should take.

A real stickler for the use of seat belts, Kaestner warns that a collision at 10 miles-per-hour can cause a skull fracture to the unbelted driver or passenger who cracks a head against the windshield.

#### Lap Belt-shoulder Harness Best

"The lap belt-shoulder harness combination is best and it unquestionably reduces the frequency and extent of injuries from auto collisions," said Kaestner.

"People would not think about transporting a fragile family heirloom across town on the seat of the car without securing it in some way, yet so many people are careless about belting themselves and passengers. Belting should become an absolute habit," he said.

A second precaution urged by Kaestner is for all drivers to consciously become aware of their need to compensate for the limitations of the road and traffic conditions, the vehicle, and for their often overlooked physical and emotional state. "Many drivers unwisely vent their anger when they're behind the wheel, a very dangerous practice."

Lastly, for the estimated 90 million Americans who consume alcoholic beverages on occasion (some more frequently than others), "learn to widen the separation in time between drinking and driving. This is especially relevant for young drivers who are inexperienced in both driving and drinking," concluded Kaestner.

—Bob Woodle



DR. NOEL KAESTNER is a specialist in the fields of human learning and experimental design. In addition to his teaching at Willamette, his consultant work with the Oregon Traffic Safety Commission has led to 20 published articles on his research in driver education, driver characteristics, and driver improvement. He is presently on sabbatical leave from Willamette, taking advanced courses in computer and statistical techniques for use in his classes.



HAPPY COACHES with Northwest Conference All-Sports Trophy include (from front right, clockwise) John Lewis, athletic director and baseball; Les Sparks, tennis; Keith Hamack, swimming; Steve Prothero, golf; Chuck Bowles, cross country and track; Jim Boutin, basketball; and Joe Schaffeld, football and wrestling.

## Bearcat Athletes Earn Coveted All-Sports Trophy

The most coveted trophy in the Northwest Conference is resting comfortably in Willamette's trophy case this summer. With first division finishes in all nine NWC sports, Bearcat teams earned the All-Sports Trophy which takes into account the team finish in all sports on an equal basis.

Willamette's high finish came on co-championships in football and basketball, runnerup honors in swimming, track and tennis (tie), third place showings in cross country, wrestling and baseball, and a fourth place in golf.

Behind Willamette's 98 points (points awarded on a 14, 12, 10, 8, 6, 4, 2, 0 basis on order of finish) came Pacific Lutheran 91, Lewis and Clark 77, Whitworth 67, Pacific 54, Linfield 48, Whitman 47 and College of Idaho 22. Athletic Director John Lewis says the All-Sports trophy is significant "because it usually exemplifies a well-balanced, strong athletic program."

### ATKINSON FELLOWS PROGRAM

## Innovation in Teaching-Learning

A new program to spark innovation in the teaching-learning process was launched at Willamette this summer.

Twenty-five of the 106 full-time faculty members received grants under the newly created Atkinson Fellows Program to enhance professional growth and improve teaching effectiveness.

Some \$10,000 from the Atkinson Fund Committee of the Board of Trustees is being utilized in the program.

Recipients of the grants are working on summer projects aimed at "yielding the greatest benefits for them as professional teachers and through them to their students..." said University Provost Dr. Harry Manley who announced the list of Atkinson Fellows.

#### Varied Activities

The projects entail such activities as new interdisciplinary course development, application of new teaching techniques and materials, exploration of off-campus study sites, audio-visual presentation on problems of urban growth, collection of geological specimens, travel, research, writing, advanced studies and other projects.

"We are pleased with the initial response to this vital new program at Willamette," said Dr. Manley who looks forward to the implementation of new ideas in teaching this coming school year.

The program allows for personal projects as well as departmental or faculty-team efforts. In some cases, the recipients received matching grants from the Fund on a \$2 for \$1 basis for their particular projects.

The Atkinson Fellows for summer of 1972 are:

- Adele Birnbaum, Assistant Professor of English, study and translation of 15th century **Book of Hours** held in the Willamette rare books collection.

- Wilbur Braden, Assistant Professor of English, research at the British Museum in London on Restoration Drama for courses and publication.

- Stanley Butler, Associate Professor of Music, study of harmonic analysis of contemporary piano music.

- Raul Casillas, Assistant Professor of Spanish, travel in Spain, Italy and Mexico for research on Latin manuscripts written by Renaissance commentators of the comedies of Terence, and on-site investigation for Willamette semester in Mexico.

- Gaston Georis, Instructor in French, on-site investigation for Willamette Semester in France and preparation of materials for Willamette French Area Studies Program.

- James Hand, Associate Professor of Religion,

advanced study of Japanese language and purchase of language laboratory equipment to enhance tutorial assistance in Japanese.

- Frances Howard, Assistant Professor of Physical Education, study of new teaching materials and techniques in physical education.

- Norman Huffman, Professor of Religion, development of interdisciplinary courses "Religious Symbolism in Literature" and "Seminar in Psychology in Religion."

- Daniel G. Montague, Assistant Professor of Physics, to prepare and increase the use of film loops as instructional aids.

- John Mylan, Associate Professor of Law, feasibility study and possible development of an advanced professional program in Taxation.

- Kenneth Nolley, Assistant Professor of English, development of materials and procedures for a new seminar in English literature.

- Harry Rorman, Assistant Professor of Earth Science, collection of data, photos, rocks and fossils for courses in Historical Geology and Physical Geology.

- Theodore Shay, Professor of Political Science, study at Hoover Library at Stanford to update courses in The Soviet Political Systems and Political Systems of Developing Areas.

- Richard Sutliff, Assistant Professor of English, study of relationship between Gestalt psychology and Transactional Analysis and the teaching-learning process in undergraduate education.

- Faculty team of Thomas Berczynski, Assistant Professor of Russian; William Duvall, Instructor in History; and Roger Hull, Assistant Professor of Art: preparation of materials for team-taught interdisciplinary course.

- Team of Sue Leeson, Assistant Professor of Political Science, and Edwin Stillings, Professor of Political Science, preparation of slide presentation and narration depicting problems of urban growth and urban sprawl in Salem/Portland areas.

- William J. Devery, Associate Professor of Psychology, for the Teaching Effectiveness Committee, provision of a learning experience in group dynamics for 15-20 faculty members to achieve greater effectiveness in teaching and committee functioning.

- Physical Education Department (James Boutin, Charles Bowles, Frances Howard, John Lewis, Joe Schaffeld, and Jean Williams), preparation of syllabi for innovative physical education courses offerings and revision of PE program to more effectively use the facilities of the proposed Lestle J. Sparks Physical Education and Recreation Center.

# On the Willamette Scene—Campus Briefs

## Sparks Center Underway

PERC has a name and a start on the Willamette campus.

The long-awaited Physical Education and Recreation Center will bear the name of Professor Emeritus Lestle J. Sparks and be completed by February, 1974.

Official ground breaking ceremonies were July 28, two weeks after Willis Hill Inc. was awarded the contract and started 18 months of work on the 12th and Mill S.E. site. Total cost for Sparks Center has been set at \$2,606,200.

In addition to naming the entire PERC structure after a man who has been associated with Willamette as a student, professor or coach for 51 years, the Trustees named the 120 by 150 foot field house after Edwin E., '41, and June Woldt Cone, '42, and the 120 by 130 foot gymnasium after Chester W. Henkle, class of 1907. The Cones and Henkle were major contributors to the project.

## 42 Eye WISH Opening

Forty-two returning language students, 26 women and 16 men, will be the first residents of the Willamette International Studies House (formerly the Chi Omega sorority house).

The House has been remodeled to accommodate co-ed housing, and French- and German-speaking counselors will join Spanish professor Raul Casillas on the resident staff.

The residents will be "thoroughly immersed in foreign culture," and English-speaking will be taboo in the house. Several freshmen had requested rooms in WISH, but will have to wait until spring semester, 1973, for consideration because of interest shown by returning students.

## Semester in France Arranged

While 20 students and English Professor Wilbur Braden launch a formal study-abroad program at Harlaxton Study Centre in England this fall, details are being worked out on the other group study abroad options.

French professor Gaston Georis has arranged a "Semester in France" program at the University in Caen, 135 miles west of Paris, which may be operable by spring, 1973. Details are still being ironed out for programs in Mexico, Japan, and Costa Rica.

## Over a 1 Million Again

For the ninth consecutive year, gifts and grants to Willamette have totaled more than \$1 million. Through the fiscal year ending May 31, gifts and grants totaled \$1,257,810 and ranged individually from 50c to \$344,137.25. The total does not include the \$1 million challenge pledge from the Seeley G. Mudd Fund of Los Angeles for the construction of the proposed Graduate School of Administration.

## Development Replacement Sought

Steps to fill the vacancy in Willamette's development office will be taken by the executive committee of the Board of Trustees Aug. 11. Vice President for Development James S. Triolo will leave the University Sept. 15 to become executive director of development at Scripps Clinic and Research Foundation of La Jolla, Calif.

A 21-year veteran of college development work at Stanford, the University of Texas, the Southwest Center for Advanced Studies and Willamette, Triolo will direct a \$25 million capital campaign and continuing private gift program at Scripps. In his three years at Willamette, the University received \$5.5 million in gifts and pledges. Triolo initiated a program to develop an extensive program of volunteer workers.

Scripps is one of the oldest private, non-profit institutions on the West Coast and specializes in basic research, clinical service, patient care and post-doctoral education. It has a world-wide reputation in allergy treatment and immunology.



**INTERNATIONAL FLAVOR.** Rick and Joyce Kraft show Spanish and Central American handiwork to Shigeru Sugawara and Masata Serizawa, two of the students from Willamette's sister institution in Japan, the International College of Commerce and Economics, who attended a two-week seminar in July. Rick, a 1969 WU grad, just returned from two years in the Peace Corps in Costa Rica, and Joyce, a senior, spent last year at the University of Madrid. Their father, Clarence Kraft, is a professor of Spanish at Willamette. Sugawara and Serizawa, both juniors, enjoyed their American studies courses and the many side trips taken by the students during their stay.

## Law Students on Campus

Single law students will be residing in Lausanne Hall across the street from the Legal Center on campus this fall. Eleven rooms were made available on the third floor and were quickly booked by the students. Other than for resident counselors, this is the first year that law students are residing in campus dorms.

## Summer Orientation Lures 151

One hundred and fifty-one of the approximately 420 new students expected this fall participated in the two three-day summer orientation programs in July. Seventy-six parents also attended, meeting with faculty and administrators and learning more about the campus. Students were able to pre-register for classes and purchase textbooks. A third orientation session for those unable to attend the summer programs starts Aug. 31. Other pertinent dates: sorority rush, Aug. 27-Sept. 2; Law School registration, Aug. 31 (new students) and Sept. 4 (returning students); start of classes, Sept. 4 (all colleges); fraternity rush, Sept. 9-15.

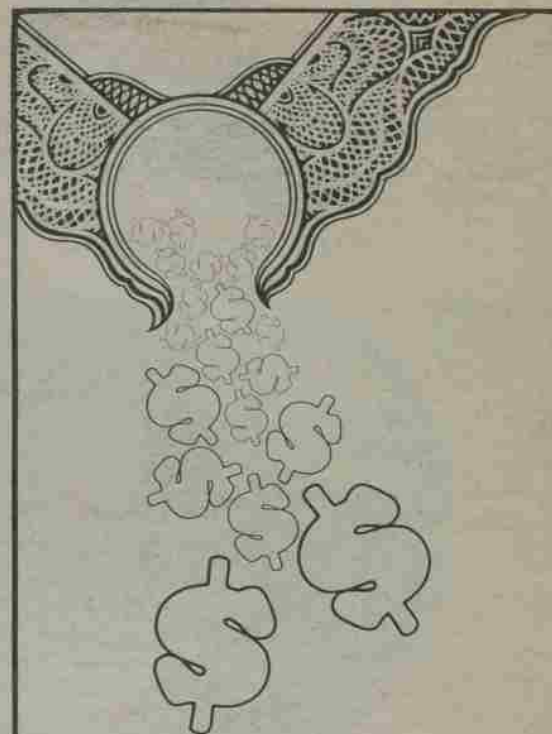
## 361 Receive Degrees

Relieved students, proud parents, thought-provoking speakers, and good weather were the main ingredients of a happy commencement day May 14.

Red-leather encased diplomas went to 361 graduates, while two long-time Willamette people, Dean Emeritus Robert D. Gregg and Life Trustee Robert C. Notson received honorary doctorates.

Noted theologian Dr. Robert McAfee Brown addressed the Baccalaureate audience with his views on how people can respond and what posture they can take to "not only maintain our sanity but also act creatively" in regard to the war in Vietnam.

CBS television newsman Daniel Schorr, garbed in a commencement gown for the first time in his life (he skipped his own graduation exercise), told a full McCulloch Stadium audience his views on America after 20 years abroad for CBS. He said it is futile to predict what issues and people will be significant very very far in the future because the U.S. is in a period of intense transition.



Turning  
capital gains  
into tax savings

It is costly to have invested well. Taxes on capital gains are high. But there is a way out. If you hold appreciated securities or real estate, you can avoid all tax on long term gains and also obtain higher income through a charitable gift in trust. There are other tax advantages besides. Let us provide details.

Call or write:  
Development Office  
**WILLAMETTE UNIVERSITY**  
Salem, Oregon 97301 503-370-6348