

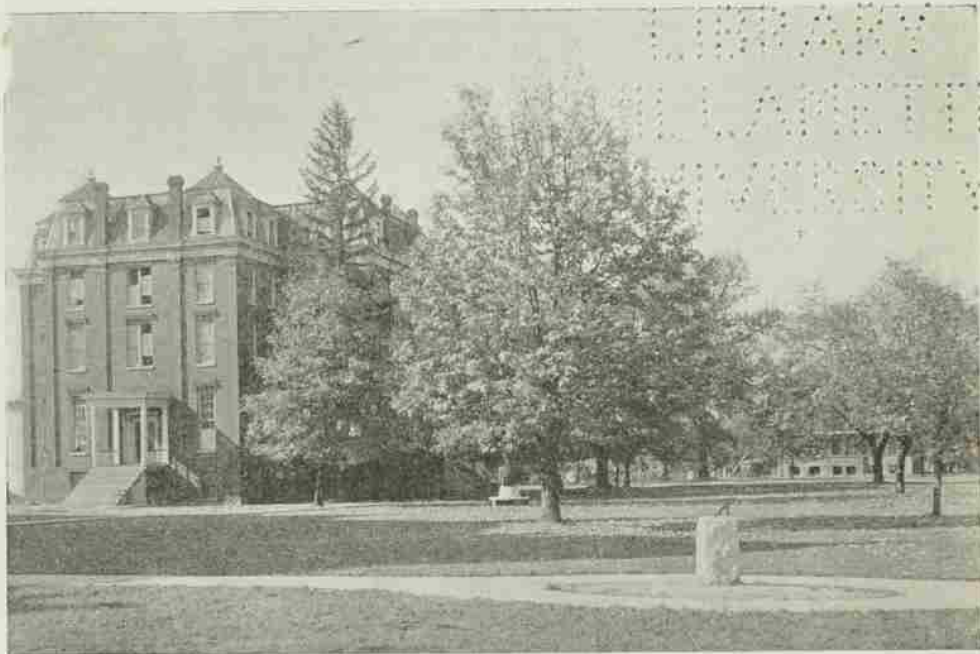
Willamette University Bulletin

Volume XII

JANUARY, 1919

Number 1

ALUMNI QUARTERLY INITIAL NUMBER



"There's An Old Historic Temple"

Ode to Willamette

There's an old historic temple
Rising grandly through the years,
Where the oaken hearted fathers
Drew their strength for strong
careers:
Down the years its portals open,
Gathered wise ones to its fold,
Breathed the spirit of the West-land,
Card'nal, emblem 'bossed with gold.

Dear old school! How strong we love
thee!

'Round thy mem'ries how we cling!
Gladsome hearts beneath thy shadow,
Loyal hearts to thee we bring.
Old Willamette, how we cherish
All thy legends and thy lore,
Born upon the calm Pacific,
Guide us onward evermore.

Spirit of the Golden West-land,
Breathing through the fathers' tears,
Tells the story of the temple,
Bids us hope adown the years.
Sing, oh, sing of dear Willamette,
Sing while hearts are young and true,
Sea to sea the chorus swelling,
Dear old school, our W. U.

—Perry Reigelman.

Entered at the Postoffice in Salem, Oregon, as second-class matter, July 27,
1908, under the act of Congress of July 16, 1894.

67. 308 31

Introduction

The alumni of a college should be its pride and its chief asset. If it be not proud of its product, it has not served its students well; if the alumni be not loyal to a worthy alma mater, they are repressing the natural feeling of gratitude.

Willamette University has always been unfeignedly proud of its graduates and the alumni have a reputation for their devotion to Willamette. It is fitting that the mutual interests should have a medium, and, therefore, the "Willamette Alumni Quarterly" is to be established. Its purpose will be to keep ourselves informed of our ourselves: to let the graduates know what the school is doing and what they themselves are doing. We care enough for one another to make this advisable, and we will care much more, if we know more of what is being done. Assuredly the Quarterly will succeed only by the help of the alumni, and I bespeak for the editor their full cooperation.

And now, finally, all together for a Willamette which will be to the West what Amherst, Wesleyan, or Dartmouth is to the East.

CARL G. DONEY.

Foreword

The educational problem in the world of reconstruction upon which we find ourselves entering, naturally will be fraught with change. What this change shall mean will depend largely upon the sympathies, ideals, faith, and practical common sense of the college and university men and women in the various activities of life.

That we are entering upon an era of helpfulness for others is evident. What part the denominational school shall have in this depends upon the school itself and its supporters. In the past it has had much to do with moulding ideals, and we are reminded that, in the war just closing, lofty unselfish ideals have won over greed and high mechanical development.

It is significant that, since the earliest history of our country, those schools founded and maintained by voluntary sacrifice, have been most efficient in begetting just those cultural ideals which have manifested their great strength in the last four years. The new movement itself is a world movement, but who will say that it does not have its inception in the very things for which schools such as Willamette have been standing during these hundred years.

Until this new spirit becomes fully crystallized and dominant, it is doubtful if institutions other than those connected with the life of the Christian church can maintain this spirit. And it will take years to crystallize this spirit and make it a steady power in the world. The utilitarian mind is not sufficient for these things. They must fill and dominate the utilitarian mind. In the long run the ideal proves itself the most practical because it is the originator of the enduring factors of life. The heart throbs of life come from the religious life and make themselves felt through it and through the practical. And these conquer at last.

Willamette's future depends upon her alumni and her usefulness will depend upon their loyalty. But their active loyalty will depend upon their knowledge of the institution, its needs, its accomplishments, its opportunities, its duties, and its ambitions. Moreover, these ought in large measure to be moulded by its alumni. Willamette's opportunity

lies in that cultural religious education which will produce characters that will dominate their environment. Its field preeminently is in the training of the mind and heart and in the vision of these. When we lose this vision, then our utilitarian machinery becomes first a death dealing force and then a rusting heap. But, unselfishly created and controlled by these, it shall advance us in comforts, power, and even in vision itself.

But a wholesome knowledge of the institution will beget resultant force best if it be stimulated by a knowledge among the alumni of each other. The life at Willamette always has been strong in that it has seemed to be a large family and the home spirit there shown has been its great moulding feature. But like sons and daughters of the real family, only too often we wander away. We do not wholly forget each other but we lose touch with each other. Memory brings up faces of those whose surroundings we would know and whose life ambitions, shown in years long gone, have bred in us sympathy. Our tender memories flash up only to be smothered by life's cares, and we forget again. Some common medium of exchange of news and thought might help. To know where they are and what they are doing, would stimulate us to new efforts and make life tenderer in renewed sympathies.

It is because of these facts that it has been thought best to publish this quarterly. Those now in charge of the institution would know more of its history. Experience has shown, too, that the newer student life is intensely interested in the University's traditions and in the principles by which it was founded. The Secretary of Education would know the alumni better. Because of these things, we solicit items of interest from the alumni. The first number is devoted largely to those long since graduated, but subsequent numbers will include any and all years. Paragraphs concerning different classes from members of those classes will be welcomed. We should appreciate items concerning yourself, as to what you are doing and stating that you still are interested in the school. We will publish as many of these as possible, but please make them short and crisp.

So, alumni, help us. We believe in the future of the old school. Its principles are right. They are proven. Give us your hand. Give us your heart. Let's keep the old school up to date—yes, a little ahead of the times. It was founded by pioneers. Let it be a pioneer always.

E. C. RICHARDS.

The Board of Trustees

Some common means of communication among the alumni of Willamette University other than the alumni banquet, which only a limited number can attend, has long been needed. As President of the Board of Trustees, I would heartily cooperate in the effort to maintain an Alumni Quarterly. It ought to be a means of giving much needed information to the alumni, arousing greater interest among them, and promoting a spirit of unity and good fellowship between the graduates of earlier years and those of more recent times.

Willamette possesses the power to impress a certain spirit upon its graduates and this spirit is largely permanent. But with cultivation it ought to be a means of keeping the school well to the front among the educational institutions of the West. I feel sure that the many alumni of Willamette will welcome this publication and, by their sympathetic

interest, help to maintain it. The Board of Trustees value greatly the spirit of loyalty among the alumni and would encourage it in every way.

The Greater Willamette Club, formed last year at the University, is an indication of the present spirit in the school. If this can be backed up by loyal alumni definitely in action, there ought to be a large increase in the enrollment and great improvement in the physical equipment of the school.

B. L. STEEVES.

Who's Who to be Published in 1919

Work on the alumni record and directory is now nearing completion and it is confidently hoped that the book, "Who's Who in Willamette," may be published early in 1919. Much time and effort have been given to the work, especially by Miss Mary Reynolds and Professor J. T. Matthews, and all available means of reaching Willamette graduates have been taken. Questionnaires have been sent out to the graduates of all departments and colleges, but answers have been slow in returning and not until the past summer have they been received in sufficient numbers to warrant publication.

It is planned to make the alumni directory an attractive and valuable book. Articles on the history and traditions of Willamette will be included. The book will be not only a directory containing the lists of graduates, but also a record furnishing in so far as is possible some information regarding their life work since leaving college. Every graduate may help those who are now working to further the interests of Willamette by contributing his share of information to this record. It is not yet too late for answers to be sent in, and it is hoped that many more will be received. This is a simple, easy way in which you may express your loyalty to the school. Pray do not fail to contribute your share. It will bind you to Willamette and bring the old days back again.

HELEN PEARCE.

Lausanne Hall

Down on the southwest corner of the campus is an ancient structure known as Lausanne Hall. Does any of you remember it? Some of you courted your wives there and some of you wives were won there and possibly some of you were married there, maybe years ago. And many are the good times you have had within its halls.

This building is ancient. I do not know how ancient it is. It has harbored hundreds of girls many of whom now are grandmothers. This building is honored and hallowed and loved. It is loved by the girls who now occupy it and it is full. Others wish to become a part of its company. Yet they all want a new one. Such a condition is strange. What ails this old building? Those who gave it did well and have been thanked hundreds of times in the hearts of the girls who have dwelt within its walls. It helped greatly to make Willamette what it is. One old cut has it marked "Women's College" and it seems to have been nearly the whole institution as far as the girls were concerned. The first diploma issued by the school was issued to a woman and credits her with being a graduate of "The Women's College of Wallamet University." Does that mean Lausanne? We do not know, but we know that it has graduated many since then out into the world of work, homes, sympathies, sickness, tears, laughter, and conquerings.

What is the matter? Well, this building is just worn out. Its window glass will not stay in the sashes. Its color is fading. Its fire escapes look rickety (though it is said the girls do climb them, and at night, too). Its floors squeak like rheumatic joints. The trouble is that this building has served its day. Its spirit is right but the habitation is beyond repair. Look into your own heart. It is young yet, and true, but maybe you wish you had a new house into which to put it. And you cannot have that here—not exactly. But maybe sometime. Would you not like to see a new house into which might be put the old Lausanne spirit—for our girls of today—a dormitory as good as the state schools have? Would it not be safer, more cultural, and leave more happiness and fewer regrets? And do not the alumni of this grand old institution wish to put some more of their lives into this new Lausanne and so live again? Would you not like to live on almost forever in a new brick Lausanne fit for today and the new tomorrow and would you not like to live forever in the spirit of these girls? I wish you could know them.

Now, a building of brick would cost about \$50,000 all complete. It would last almost forever. This building would have about forty or fifty rooms for girls and might hold, if we get money enough, about one hundred girls. One room for two girls would cost about \$500 and everybody that gives us \$500 will name a room for himself or herself or somebody else. These names will be on bronze plates on the doors so that the girls will know that someone sacrificed for them. We want this building to be a building of sacrifice. The school is a school of sacrifice and this new Lausanne must be a building of sacrifice or it will not have the Willamette spirit. Do you know what the "Willamette spirit" is? I cannot tell you. You must know it—to know it. And you who are alumni do know it.

This new Lausanne would be a fine place to deposit Liberty Bonds. It would be a safe investment and bring returns forever. And let me say here that a company of recent girl graduates who lived in Lausanne are planning to build a fine fireplace for this new building. They are led by Miss Fannie McKennon, of La Grande, Oregon.

Willamette and the War

More than a hundred Willamette men have been enrolled in the United States army during the recent war and some have given their lives. Others have been engaged in Y. M. C. A. and Red Cross work. We shall endeavor in a subsequent edition to give the names and service of these and would be glad for definite information.

Greater Willamette

The intense loyalty and enthusiasm of the student body of Willamette indicate a great future. If a combined effort can be made, what things can be accomplished! The Northwest will be a vital factor in reconstruction as it has been in the war. What part shall Willamette have in this? Already, because of the conditions brought about by the war, we have had to erect one new building large enough to accommodate two literary societies and the Y. M. C. A. A women's dormitory is an imperative necessity. The campus needs beautifying. There are numerous opportunities to show loyalty. Willamette is a part of the Northwest. She has been ever since there was a Northwest. She must continue so to be. A new day challenges us but the old spirit will win.

Some Alumni

Below are some interesting items about some of the earlier graduates. These items are taken from records which a committee has secured for the new "Who's Who in Willamette" that soon will appear. So far as we know they are correct to date. Should any errors appear, we should be glad for information.

Judge J. F. Ailshie, A. B., LL.B. '91, is practicing law at Coeur d' Alene, Idaho. From 1903 to 1914 he was justice of the Supreme Court of Idaho and is the author of a Digest of Idaho Supreme Court Reports. His son James was in the University last year. Judge Ailshie's friends confidently expect to see him in the United States Senate in the near future.

W. E. Alderson, A. B. '89, long has been a teacher and for some years has been County Superintendent of Schools of Multnomah County, Oregon.

C. J. Atwood, A. B. '97, is secretary-treasurer of the Washington Nursery Company, Toppenish, Wash., and a member of the State Horticultural Society and the Pacific Coast Association of Nurserymen. His daughter will be a student at Willamette next year.

Frank M. Anderson, A. B. '89; Stanford, B. S. '95; U. of Cal., A. M. '97, has been engaged in economic geological work, oil fields and oil deposits. He is author of several geological works and a member of national societies in geology and engineering.

Joseph H. Albert, LL. B. '98, is cashier of the Capital National Bank of Salem, Oregon. His wife is Jessie Dalrymple-Albert, Music '88. Mr. Albert recently gave a very interesting talk in chapel about early life at Willamette.

George M. Brown, A. B. '85, was District Attorney of Douglas County, Oregon, 1894-1912. He became Attorney General of the State of Oregon in 1912 and occupies that office now. His daughter Marjorie is a student at Willamette.

Dr. Frank E. Brown, A. B. '98, is a physician of Salem, Oregon, with work limited to eye, ear, nose and throat. An article in the American Magazine of February, 1917, pays high tribute to his recent work as a physician in Idaho. It speaks of him as "The Abe Lincoln of Council Valley" and says that he was the physician, pastor, and counselor to most of the people in a territory of 2500 square miles.

John Bayne, LL.B. '93, is engaged in the general practice of law in Salem and a member of the Law faculty of his Alma Mater.

Dr. Mae H. Whitney-Cardwell, M. D. '85, has offices in the Morgan building, Portland, Oregon. She has had extensive graduate work in medicine in New York.

Mrs. Lulu Hughes-Bush, B. S. '80, is the wife of A. N. Bush, of Ladd & Bush, Bankers, Salem, and is a trustee of Willamette University and chairman of the Committee on Buildings and Grounds.

Dr. Franklin M. Carter, M. D. '72, had graduate work in San Francisco and a full hospital course. For fifteen years he was physician to the Siletz Indians and for two years was principal of the government school there. His residence is Newport, Oregon.

La Fayette Conn, A. B. '86, was District Attorney of Lake and Klamath counties, 1903-4 and now is Circuit Judge of the Fourteenth Judicial District of Oregon, with residence at Lakeview.

Sarah E. Cromwell, A. B. '71, is local president and county superintendent of the W. C. T. U., Los Angeles. Her address is 1045 S. Boyle Street.

Ellen J. Chamberlin, A. B. '68, studied in Germany after graduating from Willamette and taught until 1903. Since then she has taught privately. She has compiled "Tributes to the Memory of Lucy Lee Grubbs." Miss Chamberlin was one of the interesting speakers at the last Willamette Alumni banquet.

Richard H. Dearborn, A. B. '95; Cornell Univ., M. E., is head of the Department of Electrical Engineering at Oregon Agricultural College and member of the College Council of that institution. He has worked upon valuation of electrical properties for the Oregon Tax Commission and the Oregon Public Utilities Commission and is a member of the Am. Inst. of El. Engineers and the Nat. Elec. Assoc. and the Ore. Soc. of Engineers.

Mrs. Angie Grubbs-Engle, B. S. '68, taught ten years in the Umpqua Academy, in Roseburg Academy, and in Ashland College. She taught painting and drawing in the S. O. S. N. S. one year. Mrs. Engle lives at Ashland, Oregon.

Minna Frickey, '91, A. M. '94, studied languages one year in Europe; made a tour of Bible lands and a tour of Europe for study; received the A. M. degree

from Baker; had one year's study in Moody Bible Institute; taught at Willamette 1894-99; did home missionary work in 1900-1917; and now is teaching in a training school for missionaries and deaconesses in Washington, D. C.

Dr. Gertrude French, M. D. '95, is a specialist in diseases of the eye, ear, nose and throat, with offices in the Medical Building, Portland. Dr. French is a member of numerous medical societies. After leaving Willamette she further prepared herself by graduate work in New York.

Dr. C. V. Fisher, M. D. '98, took post-graduate work in Chicago in 1898, in San Francisco in 1905 and 1909 and in New York in 1915. He is a specialist in diseases of the eye, ear, nose and throat and is located at Klamath Falls, Oregon.

Mary Eva Foster, A. B. '93; Portland Univ., A. M. '96, taught in the mission school at Singapore for two years and after 1899 in the Montana Wesleyan University. She has been editor of the Columbia Branch Quarterly since 1898. She is the author of a book of verses, "The Dream of Life and Other Poems." Address, Helena, Montana.

John O. Goltra, A. B. '87, is in business in Salem and Portland. His wife is Kate Reynolds-Goltra, A. B. '85. They live in Salem and are loyal supporters of Willamette. Their daughter Helen was a junior at Willamette last year.

Henry H. Gilfray, A. B. '66; A. M. '69, has been surveyor, member legislature, and private secretary to the Governor of Oregon. He now is clerk of the United States Senate.

J. M. Garrison, A. B. '86, taught nine years in high school and thirty years as writing instructor in Pacific University and now is enjoying life in Salem, Oregon. The daughter of Mr. and Mrs. Garrison, Miss Margaret Garrison, A. B. '18, represented Willamette and Oregon in the Pacific Coast Prohibition Oratorical Contest and won with four firsts. Miss Garrison will represent the Pacific Coast States in the National Contest next year.

William Galloway, B. S. '68, taught school for several years, served as Circuit Judge of the Third Judicial District, and now enjoys life as a farmer near McMinnville. His residence is Salem.

John B. Horner, A. B. '83; A. M. '85; also Litt. D. —, was professor of English at Oregon Agricultural College, 1890-1900, and professor of History, 1900—. Editor Oregon Teachers' Journal 1888-1890. Oregon State Examiner 1886-1898. Secretary Oregon Geographic Board 1910-1916. Secretary State Teachers' Association 1882-1898. Author of "Chart of English Literature" and "Oregon Literature."

Hon. W. C. Hawley, B. S. '84; A. B., LL. B. '88, had post-graduate work leading to the degree of A. M. He was principal of Umpqua Academy 1884-1886; president Oregon State Normal 1888-1891; and connected with Willamette as professor and president 1891-1907, having been president from 1893-1902. He was elected to the United States Congress in 1906 and has served continuously ever since assuming that office.

C. P. Haight, Ph. B. Portland University '97 and later LL. B. Univ. of Oregon, for years has been editor of the Blue Mountain Eagle, Canyon City, Ore.

Emily N. Jordan, B. S. '63, was born in Missouri in 1843, crossed the plains in 1850 and became one of the earlier graduates of Willamette. She was married to Joseph Jordan in 1865 and lives in Berkeley, California.

Hon. M. L. Jones, A. B. '77, and his wife, Emma H. Jones, '78, are living on a farm near Salem. Mr. Jones also holds the A. M. degree from Willamette. He has served as a member of the Oregon Legislature and is a large land owner in Marion County.

Dr. E. D. Johnson, M. D. '97, took post-graduate work in New York; Charite Hospital, Berlin; Allgemeines Krankenhaus, Vienna; Mayos, Rochester; and Boston General Hospital. He is a member of numerous medical societies and now is practicing at Klamath Falls, Oregon.

Dr. R. Kelley, A. B. '73; A. M. '80; M. D. '84, has practiced medicine continuously since graduation and now has offices in the Stevens Building, Portland. He is a member of the City and County Medical Association and A. M. A., and was at one time Dean of the Willamette University College of Medicine.

A. N. Moores, A. B. '76, was for over twenty years manager of what now is the Spaulding lumber mill in Salem, and has been a member of the council of Salem and for several years was a member of the Board of Directors of the public schools. In 1916-17 he was president of the Alumni Association of Willamette. His wife is Cora Dickinson-Moores, A. B. '78.

Hon. Chas. B. Moores, A. B. '70, is a member of the Board of Trustees of Willamette University, and, in length of service, is dean of that body. He has been Speaker of the House of Representatives of Oregon and prominent

in politics for many years. He recently read before the Salem Six O'clock Club a very interesting paper on the relation of the Methodist Church to the early political history of Oregon, which paper was published in a recent issue of the Oregon Statesman. At present Mr. Moores is chairman of the Dock Commission of Portland. His wife is Sarah Chamberlin-Moores, B. S. '73.

Miss Bertha Moores, B. S. '77, also is a member of the Board of Trustees of Willamette and was for several years a member of the State Welfare-Commission. She resides in Portland.

Rev. A. S. Mulligan, A. B. '88, is a member of the Oregon Conference, Methodist Episcopal Church, and resides in Salem and is pastor at Falls City, Oregon. His daughter Vesta is a senior at Willamette.

Prof. James T. Matthews, A. B. '89, has been engaged in teaching since graduation and is now in his twenty-sixth year as professor of Mathematics in Willamette and the friend and counselor of all the students. Professor Matthews is president of the Alumni Association of the University. His wife is Rebecca Brown-Matthews, B. S. '89. Their two sons have been students at Willamette. Oliver, A. B. '15, and Donald of the class of '19.

Wm. P. Matthews, A. B. '96, is a teacher in Alzona, Washington.

Col. Robert A. Miller, B. S. '78, has been state representative in the Oregon Legislature, and for four years was register of the Oregon City Land Office. He was admitted to practice in the Supreme Court of Oregon in 1887; to the Supreme Court of the United States, 1893; to District Federal and Federal Courts of Oregon in 1904; and to practice before all Bureaus of the Interior Department at Washington, D. C. Residence, 674 Johnson Street, Portland, Oregon.

Rev. Frank L. Moore, A. B. '92; A. M. '94, later received the degree of B. D. from Drew Theological Seminary and now is pastor at Oro Fino, Wash.

N. M. Newport, A. B. '90, took work in law leading to the degree LL. B. and in arts leading to the degree A. M. Has been city editor and lawyer and president of the Alumni Association. He is city attorney for Lebanon, Oregon, and director of the Lebanon National Bank and Lebanon Investment Company. His daughter Beatrice has been a student at Willamette.

Mrs. V. M. Ohmart, B. S. '73, lives upon the heights in the south part of Salem and always is interested in Willamette.

Edgar B. Piper, A. B. '86; A. M. '92; LL. D. '09, has engaged in newspaper work since graduation and now is editor of the Portland Oregonian.

Virgil Perringer, A. B. '90, took post-graduate work for the A. M. degree, was in educational work for eight years, practiced law eighteen years, and is Prosecuting Attorney for Whatcom County, Wash. His daughter Ruth was a member of the graduating class of Willamette in 1918 and a second daughter, Fay, is a sophomore.

Dr. R. E. Lee Steiner, M. D. '98, took post-graduate work in New York and has practiced medicine since. He is now Superintendent of the Oregon State Hospital at Salem. His daughter was a student at Willamette for three years.

Dr. B. L. Steeves, A. B. '91; A. M. Portland Univ., is an eye, ear, nose and throat specialist in Salem; member of various medical societies; President of the Salem Bank of Commerce; and President of the Board of Trustees of Willamette University. He has been Mayor of Salem and Lieutenant Governor of the State of Idaho.

Dr. C. W. Tower, M. D. '69, practiced medicine many years and now is retired and living at Marshfield, Oregon.

Oliver P. Tower, A. B. '90; Wesleyan Univ., A. M. '93; University of Leipzig, Ph. D., now is Hurlbut Professor of Chemistry in Western Reserve University, Cleveland, Ohio, and member of many chemical societies.

I. H. VanWinkle, A. B. '98; LL. B. '01, has been Assistant Attorney General of Oregon over ten years, is dean of the College of Law of Willamette, member of the Executive Committee of the University, secretary of the Board of Trustees, and author of "Oregon Law Made Plain," and similar works.

M. M. Waltz, Ph. B. '84, had post-graduate work leading to the degree of A. M. Has been engaged in preaching, teaching in college, and farming and dairying. His wife is Mary Starr-Waltz, A. B. '82 with post-graduate work leading to the degree of B. M. She has taught piano and voice. Mr. and Mrs. Waltz now live in Salem. Their sons Roswell and Lloyd are students of the old school.

Chas. J. Weed, A. B. '98, served with the Second Oregon Volunteers in the Philippines, was chief clerk of the Department of Instruction in Manila, and superintendent Tun Wen Institute, Amoy, China, and is author of text books for the Anglo-Chinese schools.