

Big Plans Ahead

Glee Activities, Ensuing Fun Fall Class Meeting Roster

Brand-new class officers had their first official duties recently in conducting meetings of their respective organizations. Plan-making for the forthcoming Glee festivities figured uppermost in each group.

FRESHMEN gathered in the gymnasium to discuss regulations

governing Glee. The importance of maintaining security regarding frosh plans for the activities was emphasized by Glen Downs, manager of the presentation.

WALLER HALL was the gathering place of the sophomores who

were introduced to their new officers. Hugh Stites, incoming president, presided as reports from Glee formation-and-song leaders were given. A new schedule for class meetings was drawn up. Stu Hall moved that representatives from each living organization should be present on the class council, and the motion was passed.

In the absence of band-touring Greg Milnes, Jim Allen fulfilled his duties as vice-president of the junior class at its meeting in the music hall.

GLEE VERSE written by Terry Boyd and Joan Barber was accepted by vote of those present. Marcia Hafter was appointed chairman of the committee to write a Glee parody. Discussion of a tentative Sunday party after the big occasion concluded the meeting.

Seniors convening in Collins hall adopted the words read by Ralph Litchfield for their Glee melody, and plans were laid for their part in the challenge assembly preceding that occasion.

Seniors were also reminded to complete their appointments for graduation's cap-and-gown pictures.

Radio Coverage Secured for Glee

Radio coverage of Glee night has been secured by frosh Glee publicity chairman Bill Hemenway. The music from the various class presentations will be broadcast on KOIN Sunday, March 6, at 1 p. m. KEX will have a special Glee music broadcast 9:30 Monday morning as will KGW later during the week.

Chairman Tom Dunham and his record committee have acquired the services of a new tape recorder for the traditional recording of Glee night activities. The committee hopes to sell the records. Dunham emphasizes that due to the new tape recorder, the records should be of a much higher quality than in the past. They will sell for \$1.50 each.

Committee Formed To Keep Blue Monday Under Control

The formulation of a Freshman Glee executive committee with the specific purpose of fixing a responsibility for the activities of Blue Monday has come out of work done in student council.

ACCORDING to ASB President John Bergstrom, the committee, formed on a request from faculty members, is an attempt to run Blue Monday in an orderly fashion and to alleviate any damage to campus buildings and any chance of danger in the mill stream. Such conditions have been present in previous years when no specific group was responsible for Blue Monday except the losing class in Glee, said Bergstrom.

Students whose positions and offices have given them membership on the committee and who will be working under Freshman Glee man-

ager Glen Downs and Jim Milnes, Freshman Glee assistant manager; Don Tasker, Freshman Glee secretary; Mike Farra, fall semester freshman class president; Stu Hall, fall semester sophomore class president and past Freshman Glee manager; Roy Chapin, fall semester junior class president; Terry Kent, fall semester senior class president; and Rusty Beaton, A.S.W.U. treasurer.

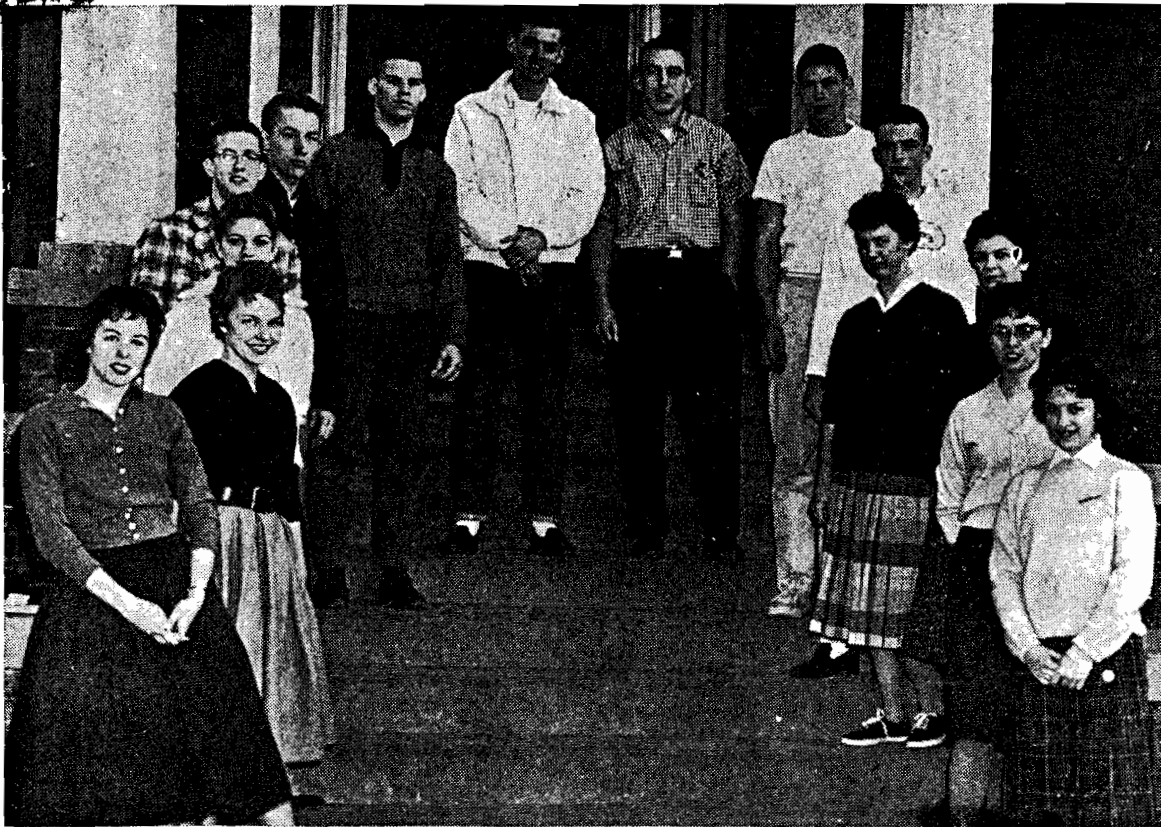
THE COMMITTEE will begin action promptly to plan for Glee and for Blue Monday and to recommend plans and policies to student council for approval or modification.

One decision that could be made through the committee is that the use of water, smoke bombs or any other materials which could conceivably damage any of the buildings would be prohibited. Members of the Lettermen's club could be chosen to discourage any action along these lines.

Another point to be decided upon is that a certain number of points could be deducted from the total score of the class presentations which attempt to imitate another class presentation with its song. Specifically, signs could be discontinued during singing.

CAMPUS CRIMINALS

The traditional week of kidnapping in connection with every annual Freshman Glee began in full spirit preceding the challenge assembly on Tuesday. Freshmen kidnaped sophomore class president Hugh Stites and the revenge was something slightly out of the ordinary. Sophomores mapped a detailed strategy to kidnap freshman song leader Stu Hall. In an all-campus serenade, Pi Phi sisters (members of the sophomore class) abducted Miss Lewis and she spent the night locked in an upstairs room at the chapter house. Explanations to the captive of the previous approval of Dean Ewalt and Doney housemother Miss Lois Latimer, failed to soothe the song leader's ruffled freshman spirit.



Shown above are the cogs in the 1960 Glee machine, headed by Glee Chairman Glen Downs. These freshmen led the committee work for this year's Glee. The cogs are (left to right), Virginia Moran, Merle Gillespie, Sue Whitelaw, Max Merrill, John Abele, Tom Dunham, Glen Downs, Doug Simon, George Douglas, Buck Hemingway, Joanne Tacker, Judy Triplett, Lynne Higgenbotham and Joy Davis. (Photo by Bruce Black.)

Glee Banner Under Guard

A few moments before the somewhat drawn-out announcement of the winner of Freshman Glee competition, the famous Glee Banner is marched before the waiting masses as added impetus to the charge for the stage.

The trembling freshman girls who bravely hold the flag until the very instant before first place is announced gratefully surrender their places of honor to the male set lest they be trampled in the ensuing stampede.

Jerry Whipple, Alumni director, watches over the coveted banner until a delegated member of the freshman class comes to call for it. The present banner is not the original, as that one suffered at the hands of over-eager victors in 1944. Following the fight for the victory-symbol on Glee night, the banner is returned to Mr. Whipple to be kept until the next year's contest. All participating members of the winning class receive a miniature replica of the banner as a reward for their efforts.



"Gleem . . . 2 . . . 3 . . . 4."

Class Members Predict Wi

...igh
...ion de
...mally, it
...logical, these school
...from a member of
...the question, who's
...win this Glee?

By GAIL DUREAN

...the class of '63 will win at
... Looking at the objectively
...the way it seems. One of all,
...our turn! Three years have
...gone by since the freshman class
...has won. This year's freshman class
...has all the enthusiasm and coopera-
...tion that is needed for a win. The
...audience will see a truly fine tech-
...nical performance on Saturday. Of
...course, the mechanics of marching
...and presentation don't by them-

selves make a winning combination. It takes a song, a song that can stand by itself and able leaders like Sue Lewis and Jo Taylor. Both of these girls have the complete backing and cooperation of the class. This is why I say: "Class of '63 will win at Glee." That's the way it will be!

By BARBARA GILDEA

If there is a doubt in your mind who will win Glee, ask any sophomore. Their calm assurance comes from the knowledge of the tremendous depth of sentimental feeling expressed in their song. The haunting, enchanting melody, coupled with the tender words of love, make it the perfect serenade. Besides the song, there is the sophomore class to sing it to add to its beauty by faultless interpretation. Their maturity and experience, plus practice under the tremendous leadership of Tom Hemingway, cannot help but give them pride and confidence. Undaunted by the misfortune of the past that merely functions as added incentive, the sophomores will emerge gloriously victorious!

By DARBY, GLADWIN and MEEKER

The combination of red, white and blue seems to be the winning colors for this year's Freshman Glee. What is the theme for this year's Glee? Serenade. This is one thing no other class has been able to apply in their presentation. One class forgot their candelabra, another forgot the notes for their staff, still another left the most important fifth point off their star. The remaining class will not be heartbroken this year, since this class knows well the trail to victory. While the stars are shining and the piano is playing, Dan Cupid's arrow will strike the winning glow. Love, perturbation, the young and the fair, these are the greatest spirit

when spring glows in their hearts. One of the important aspects of a serenade is the feeling that is exhibited by the melody of the music. As it is seen by the authors of this article, only one class can meet the standards of having a beautiful, flowing melody that has a feeling of love to be presented to the listening audience.

By RALPH LITCHFIELD

Thoughtful silence prevails in the meeting halls of the tiny band of venerable sages which compose the class of 1960. Thoughtful silence prevails among the 60 individuals where, at one time some 225 voices would have rocked the foundations of Waller with their cries. Why are we silent? Why do we think instead of shout?

Many years ago we too were a boisterous band of freshmen. That year we demonstrated the quality which was hidden among our unpolished gems by winning Freshman Glee. In the years since that time, however, we have learned through bitter experience that even though every single student knows that his class can not possibly keep from winning, it does not work out that way.

Let it not be said, however, that these past years have been spent to no avail. Like a tiny underworld we have been preparing for the day

when we shall once again have power. The superb qualities of our marching have been honed to a razor sharpness by years of ROTC drills. Voices have mellowed. The fabulous talent of our front row may have diminished in quantity but its quality has only been brought to a fine polish by the abrasives of time. An intense screening process has reduced our number to the point where no weak link remains in our chain. Now, like an awakening giant, we are mobilizing.

"Who's going to win Glee?"
"Wait," says the thoughtful senior, "and see."

'60 Glee Records On Sale, Top Tone

"Cool and clear - the swinging sounds of '60 Glee" will be available with a new high quality of sound not possible without the new Ampex recorder to be used, says Tom Dunham, chairman of Glee record sales. These records will be directly taped, unlike last year when they were taken from the radio tape, added Tom.

John Steiner, Dexter Maust and Dunham will be taking orders for records at the program, with coupons stapled inside programs or write-in orders. Record orders be taken daily at Eaton hall convocations and chapels next two weeks.

Songfest On Radio

Glee will be broadcast live Saturday night on KSLM under the sponsorship of Stevens and Son jewelers and will also be rerun in full on Sunday night at 7. Carl Ritchie, professor of English and radio-TV at Willamette, who has narrated this program since he was a student of the university, will be aided this weekend by students Jon Griffis and Ross Stephen.

Downs Picks

Glen Downs, Freshman Glee manager, has been taken over by manager Glen Downs, as he chose his assistant manager, Doug Simon and two executive secretaries, Joy Davis and Virginia Moran.

Downs also announced the appointment of nine committee heads. Taking over the responsibility for the backdrop is Sue Whitelaw with decorations being headed by Merle Gillespie. Publicity for this big annual event will be arranged by Bill Hemingway and organizing the ticket committee is Ted Fahlen. Barney Kliks will undertake the job of lighting and special effects with entertainment being headed up by Dave Beaton. Records will be taken care of Tom Dunham, ushers by Lynne Higginbotham and programs by Jo Ann Tacker.

Deliberation has held up final selections on a few important positions, according to Downs. They will be announced at a later date.

Petitions for student body and formation leader were given last Wednesday night and these positions will be voted on along with the class elections.

MARCH 4, 1960

English, Psych Profs Praise, Score Glee

By HOLT WILLIAMS

Glee week is an eventful one for many WU Bearcats, and particularly for the freshmen it is a time of the year when the spotlight definitely turns away from tests and books. Glee week and the perennial Blue Monday which follows is an abrupt change of pace for faculty members as well as students.

IT IS A well known fact that besides promoting the excitement of interclass competition, Glee also promotes controversy on the part of many of the members of the faculty and administration. The Collegian has selected Dr. Paul C. Trueblood, head of WU's English department, and Dr. Noel Kaestner, associate professor of psychology, to expound their particular pros

and cons on Freshman Glee.

Says Dr. Trueblood, "Freshman Glee is one of WU's oldest and dearest traditions. The same unique spirit on the part of the participants still exists as it did when I was a student here myself. There is simply no parallel to it anywhere."

DR. TRUEBLOOD emphasized that this week is an ideal time for glee. "Last year glee ran into all sorts of conflicts he says, "but this year professors have had ample time to give their first major test before midterms."

Concerning any improvements which might be made on glee, Dr. Trueblood would suggest that students devote more of their efforts to the quality of their songs and somewhat less to the elaborateness of the presentation and display.

DR. KAESTNER looks at glee from another angle. "Glee," he comments, "is not the novelty to many of the professors that it is to students. Rather than being a tradition, I think Glee is simply just an excuse to have a good time."

Dr. Kaestner, along with his psychology compatriot, Dr. James Derthick, believes that glee has been labeled as an "old and dear tradition" because its advocates are rationalizing and can find no other practical purpose for it.

Frosh Give Challenge

By HOLT WILLIAMS

Confidence and cockiness were the order of the hour during Tuesday's challenge assembly, as each class president in turn boasted how his class was certain to win the Glee contest. The frosh Glee participants filed in the gym jubilantly singing "Hi-ho hi-ho—it's off to Glee we go,"

and perched atop the east balcony overlooking the upperclassmen.

Frosh prexy Bob Hakala scoffed at the inability of the upperclassmen to capture him, even though the sophomore girls did manage to kidnap frosh song leader Sue Lewis for a night. Bob insisted that his class was "bound" to win Glee. He concluded his challenge by adding that sophomore class president Hugh Stites was here strictly due to the courtesy of the freshman class.

Stites, after a rather eventful day and night, nonetheless seemed no worse for wear and answered the frosh challenge with the reply that due to his "inside look" and the cooperation of the frosh he was positive that the freshmen were too disorganized to even be a threat and assumed that the juniors and seniors were

in a similar state of affairs.

Junior class prexy Greg Milnes laughed off the boasts of both lowerclassmen and asserted, "We'll show 'em how its done." Greg maintained that he had the utmost confidence in his defending champion juniors. His classmates enthusiastically backed him up with an "abridged" version of the song "Running Bear."

A class meeting called by senior president Joe Karmos during the seniors' portion of the assembly almost resulted in the secession of the senior class from Glee, but due to a last minute emotional appeal by university president G. Herbert Smith, incognito, the high and mighty seniors reconsidered.

"No participate in graduate," they reasoned, so the other classes can rest assured that the seniors will be in there pitching tomorrow night too.

Times Change . . .

Rule Gives Profs Protection

GINIA MORAN

"Has anyone seen an honest man?"

Yes, she was looking for an honest man; and she ran through the gallery of the State Legislature, then in session, swinging a red lantern. Dr. Daniel H. Schulze can't remember if she found one, but he recalled back other incidents that have happened in the 30 years he has seen Freshman-Glee as a prof on campus and the seven years as announcer of the Glee winner.

THE LEGISLATURE, of course, heartily protested the use of their sacred halls to fulfill Blue Monday bets. That episode and a few others, such as eating lunch in the middle of an intersection, brought on the decree that bets must be paid off on campus.

Glee, continued the professor, has changed quite a bit through the years. The parodies, he said, used to be sung in a sort of musical free-for-all on Blue Monday. The first class that could get to its feet sang a parody of any formally written parody, just "anything that came to mind looking fun at something the other class had done wrong Glee-wise." "It was so much more spontaneous," said Dr.

Schulze, although he commented he had no partiality for either method.

THE SENIORS used to parade in to "Pomp and Circumstance," he continued, wearing caps and gowns which announced their status in the eyes of the school. This, he felt, was a fine tradition, recently changed to "Senior Cut-up."

Returning to the fascinating subject of Glee bets, this reporter innocently asked the reason for the rule about not physically involving faculty members in Blue Monday wagers.

WELL, HE said, it was getting so the faculty had to wear the "least desirable" clothes on that

day. He himself has had his tie cut off along with many others. One canny and anonymous prof put a wire down the middle of his one year. The final blow came to professorial patience however, several years ago when a co-ed squirted a professor with a water pistol full of "water-perfume mixture."

Meandering along this line, Dr. Schulze recounted the story of a venerable and dignified prof (also anonymous) who had loudly derided students for being so childish on that Monday. It seems that when the prof's son came to Willamette, he bet too confidently himself and came to school in short pants riding a tricycle . . . ah farewell to dignity, soon comes Blue Monday.



Freshmen seem to get the brunt of it all. First, it was that leaf rake at 5 a.m. and now it's the first Freshman Glee practice, first of the semester and first of the schedule, at nearly the same horrendous hour (5 a.m., an improvement). This poor sacked-out frosh is being encouraged this early morning by two unsympathetic upperclass comrades. Cold water, cutting utensils and blocks of wood are relatively good luck. "After all, sonny, we went through it too." (Photo by Bruce Black.)

Frosh Glee Meet Planned Today

Attention, freshmen men who have the faintest idea of what Glee is all about! A special Glee assembly is being pre-arranged for today at 12:30 in the auditorium for all freshmen.

Committees for positions in Glee are being posted in all living organizations. According to Glee Manager [Name], who will announce names of committee heads and the assistant Glee Manager next week, [Name] hopes to see a great deal of enthusiasm in the committees to help make the names of the Glee better and more efficient.

Challenge, Antics Will Begin Glee

Parodies, taunting speeches and lots of cutting up will mark the annual Glee Challenge assembly Tuesday during the usual convocation period. The newly-elected freshman class president, Bob Hakala, is expected to begin the challenges (if he isn't detained by enthusiastic sophomores) with Hugh Stites, Greg Milnes and Joe Karmos, sophomore, junior and senior prexies, following suit.

EACH SPEECH will have a musical background of taunting parodies written about what a class

confidently hopes is the inside dope on another classes' songs.

Entertainment of other sorts, such as skits and spoofing, will be the order of the day.

GLEE SONG practices begin next week with several innovations — such as no 5 a.m. rehearsals — these have been changed to a more civilized hour — 6 a.m. Complete schedules of rehearsals for each class will be posted today in living organizations and distributed among all students participating. Due to scheduling conflicts, the final schedule has not been completely okayed in time for publication.

Tickets will be distributed this year by Ticket Manager Ted Fahlen at the rehearsals. The extras will be distributed on a first-come, first-served basis, although first equally divided among the classes.

THE JUDGES this year come from Salem, Portland and Beaverton with all except one having judged either in 1958 or 1959. They are Music: Melvin H. Geist, Dean of Music School; Mrs. Howard Miller, Salem; and Mr. Al Robertson, director of music, Beaverton high school; Words: Mrs. Grace Lemm, Salem; Dr. Helen Pearce, Salem; and Mrs. Jean Vancil, director of music, Grant high school, Portland; Presentation: Miss Faye Sparks, Mr. David Putnam, Mrs. Alice Jones and Richard McClintic, all of Salem.

The judging itself will follow past tradition with points awarded in this manner: music—20 points, words—20 points, vocal rendition—40 points and formation—20 points. The formation will be judged on originality, acceptability and execution. A further break-down of points and other Glee rules has been posted in each living organization.



—by Artist Terry Boyd.

What's This Thing Called 'Glee'?

By AN KETCHUM

Is this thing called "Glee"? Sort of like a song title but really, it's a question which is asked by many bewildered freshmen as the important date, Nov. 5, draws near. This class is right, inherited the big job of organizing the annual event. At the stage of the game question arises. "How was it done?"

HELP ERASE some of the old marks and to throw in a few of interest, here is some found on one of Willamette's traditions: Freshman Glee. In spite of the grunts and expressed at the word "tradition" is unique in that it is a tradition which has retained its vitality of being a "fun time" as adapted itself to modern life.

The idea for the first Glee was produced by three ingenious students: Jimmie Oakes, "Brick" Harrison and R. V. Ellis in 1908. The event, then called "College Glee," was held in Waller hall and the freshman class of 1912 consisting of 34 members, took top honors and claimed the banner.

In 1911 the program was moved to the First Methodist church and then in 1912 to the Salem Armory where it was held for the following 11 years. It was in this year that marching was incorporated and is still used today.

In 1916, the senior class established the wearing of caps and gowns. It was also in this year that, due to the difficulty of acquiring a basis for judging, the same type of song was sung by all classes. In previous years, the classes could select from a list of serenades, alma mater or fight songs. This

year the 'serenade' theme will be used.

In 1923, the building of the gym made it possible for Glee to be held back on campus. The Monday after Glee convocation was originally created to sing songs of Glee

competition but this soon developed into an event similar to the famous Kangaroo Kourt with songs performed by members of the losing classes. From that came Glee bets which were paid on Blue Monday as today.

In 1909 the original banner was replaced by a pennant made by the freshman class. In 1923, the Glee committee decided they could afford to buy a real banner which was soon replaced when it was ripped to shreds by the "eager-to-claim" winning class.

SO, JUST WHAT is this thing called "Glee"? Does it hold meaning for you as it did for the hundreds of Willamette students in the past and today who have been a part of this event, or is it just another tradition to you?

Glee is a chance for community and creativity on the campus. And it's a chance for fun and fun.

Downs Picked Glee Manager

"I consider myself very fortunate in being chosen as Freshman Glee manager because this position holds a lot of responsibility and I will try my utmost to justify the freshmen's

faith in me," expressed Glen Downs upon learning of his selection to the position.

Downs came out on top in the elections held for Frosh Glee manager last Monday and Tuesday, at which time the freshman class was again summoned to the polls due to the disqualification of a previous candidate, which had resulted in student council declaring the first election void.

Downs, a freshman hailing from Beaverton, professes his first plan of organization will be a freshman orientation meeting right after Christmas at which time the freshman class will be given the "low down" on glee. Any questions will be answered and any ideas welcomed.

When asked his views on "Blue Monday," Downs stated "I think this tradition is instrumental in glee, and it's up to the students' ration-

ality to keep it up." Due to the controversy expressed on this subject currently, one of the important goals of glee this year should be to show that this practice can be fun and yet not destructive," he continued.

Glen plans on talking to the people instrumental in the organization of this feat last year to learn of previous pitfalls so they may be avoided. This will help in gaining new and improved methods of organization, he said, adding "I don't want to be a victim of dogmatism."

Sign-up sheets for committees will be placed in the various living organizations after Christmas. "I urge the freshmen to sign up if they are interested in working on this program. The number that do this will show just how much interest the people have in seeing that this glee is the best ever," Downs concluded.

What's This Thing Called 'Glee'?

JAN KETCHUM

What is this thing called "Glee"? Sounds sort of like a song title but in reality, it's a question which is being asked by many bewildered freshmen as the important date, March 5, draws near. This class has, by right, inherited the big job of organizing the annual event. At every stage of the game question marks arise. "How was it done before?"

TO HELP ERASE some of the question marks and to throw in a few points of interest, here is some background on one of Willamette's oldest traditions: Freshman Glee. Glee, in spite of the grunts and groans expressed at the word "tradition," is unique in that it is a kind of tradition which has retained the quality of being a "fun time" and has adapted itself to modern campus life.

The idea for the first Glee was produced by three ingenious students: Jimmie Oakes, "Brick" Harrison and R. V. Ellis in 1908. The event, then called "College Glee," was held in Waller hall and the freshman class of 1912 consisting of 34 members, took top honors and claimed the banner.

IN 1911 the program was moved to the First Methodist church and then in 1912 to the Salem Armory where it was held for the following 11 years. It was in this year that marching was incorporated and is still used today.

In 1916, the senior class established the wearing of caps and gowns. It was also in this year that, due to the difficulty of acquiring a basis for judging, the same type of song was sung by all classes. In previous years, the classes could select from a variety of serenades, alma mater or fight songs. This

year the "serenade" theme will be used.

IN 1923, the building of the gym made it possible for Glee to be held back on campus. The Monday after Glee convocation was originally created to sing songs of Glee

competition but this soon developed into an event similar to the famous Kangaroo Kourt with songs performed by members of the losing classes. From that came Glee bets which were paid on Blue Monday as today.

In 1909 the original banner was replaced by a pennant made by the freshman class. In 1923, the Glee committee decided they could afford to buy a real banner which was soon replaced when it was ripped to shreds by the "eager-to-claim" winning class.

SO, JUST WHAT is this thing called "Glee"? Does it hold meaning for you as it did for the hundreds of Willamette students in the past and today who have been a part of this event, or is it just another tradition to you?

Glee is a chance for opportunity and creativity on the part of all. And it's a chance for fun, too.

Downs Picked Glee Manager

"I consider myself very fortunate in being chosen as Freshman Glee manager because this position holds a lot of responsibility and I will try my utmost to justify the freshmen's

faith in me," expressed Glen Downs upon learning of his selection to the position.

Downs came out on top in the reelections held for Freshman Glee manager last Monday and Tuesday, at which time the freshman class was again summoned to the polls due to the disqualification of a previous candidate, which had resulted in student council declaring the first election void.

Downs, a freshman hailing from Beaverton, professes his first plan of organization will be a freshman orientation meeting right after Christmas at which time the freshman class will be given the "low down" on glee. Any questions will be answered and any ideas welcomed.

When asked his views on "Blue Monday," Downs stated "I think this tradition is instrumental in glee, and it's up to the students' ration-

ality to keep it under control. Due to the controversy expressed on this subject currently, one of the important goals of glee this year should be to show that this practice can be fun and yet not destructive," he continued.

Glen plans on talking to the people instrumental in the organization of this feat last year to learn of previous pitfalls so they may be avoided. This will help in gaining new and improved methods of organization, he said, adding "I don't want to be a victim of dogmatism." Sign-up sheets for committees will be placed in the various living organizations after Christmas. "I urge the freshmen to sign up if they are interested in working on this program. The number that do this will show just how much interest the people have in seeing that this glee is the best ever," Downs concluded.

Petitions Are In for 1960 Glee Manager

Dave Beaton, Glen Downs and Mike Mackedon petitioned student council Wednesday for the position of freshman glee manager. Campaign speeches will be given during the first convocation following Thanksgiving vacation.

Primary elections will be held the following Thursday and Friday, December 3 and 4, with run-offs December 7 and 8.

Student council will receive petitions for spring Blood Drive chairman before or on the date of December 2. The elections will be held December 9 in student council when the candidates will present their campaign speeches.

Delegates elected by student council for the December 4 and 5 Oregon Federation of Collegiate Leaders conference are Judy Smith, Pete Blewett and Stu Hall. They and the Willamette ASB officers will attend the OFCL discussions concerning school problems and will take part in the publication of three manuals to aid in problems of student government.

Vickie Pond and Mike Graydon were elected to represent Willamette as the two delegates at the winter carnival February 27 and 28. The council also nominated candidates for snow princess for the carnival.

Chris Franz, Brenda Gustafson, Kris Hansen, Victoria Humphrey, Kaye Morast, Jean Sanford, Sue Wilson and Judith Jackson will be vying for the honor at the Wednesday ASB meeting directly after Thanksgiving vacation ends.

Zestful Glee Betting Flirts With Rules

With Glee just two weeks away, sporting students are making Glee bets, some new, some old standbys.

THE GLEE committee warns that this year there will be no girls in men's showers and that the Lettermen's club will officiate Blue Monday to insure that no bets in

bad taste or involving dangerous actions are carried out. Bets, it says, should avoid physically involving members of the faculty or resulting in any damage to university property. They shall not be held on state capitol grounds.

Diane Dickson, junior, hopes she's complying with these rules with a bet she would like to make with a freshman fella. It would involve holding pagan worship (no specified kind) among the white Greek columns next to the Sigma Chi house that evening.

DICK BARTON has struck a middle ground in obeying the rule that says no bet shall be carried out Sunday night or after 12 p. m. Monday. He wants to renew his last year's bet (which he lost) with a ravenous student interested in eating lunch on the corner of Twelfth and State at high noon.

Freshman songwriter Sue Lewis has confidently bet junior Tony Meeker that he will have to take a bath in front of Eaton—costume not yet designated—and Tony supplies the "tub."

If a certain Phi Delt loses his bet, he will have the "fortunate misfortune" of going to the top floor of a women's organization and knocking on a few doors—time, place and identity undisclosed.



Steve Paulding, representative of the world-wise sophomore class, is about to make a Glee bet with Thelma Ray, unassuming freshman damsel at left. Have you made your bets? (Photo by Bruce Black.)



Manager Reveals Glee Rules

Glee Manager Glen Downs has released a break-down of the most immediate rules for Glee participants. To be released sometime next week to the houses, the most critical are:

Seven copies of the words and music must be turned in to the Alumni Office by 12 noon, February 25.

A complete alphabetical list of participating class members must be submitted to the alumni office by Friday, February 26, 5 p. m.

No practices will be held before Monday, February 29, as the gym will not be available before that date. (A practice is defined as consisting of 10 or more persons.)

These deadlines must be strictly observed because a late class will not be allowed to participate.

Discussion is now under way to set suitable hours for the week-long Glee rehearsals for mutual satisfaction and to try and alleviate the hated 5 a. m. meet although it is felt it is necessary for a top show due to the unavailability of the gym before February 29.

Downs added, "everything as far as I can determine is right on schedule."

Radio Station KSLM will broadcast the Glee performance, it was announced by publicity manager Bill Hemenway. Other stations in Portland will carry the tapes of the program and the Portland Oregonian will handle the story.

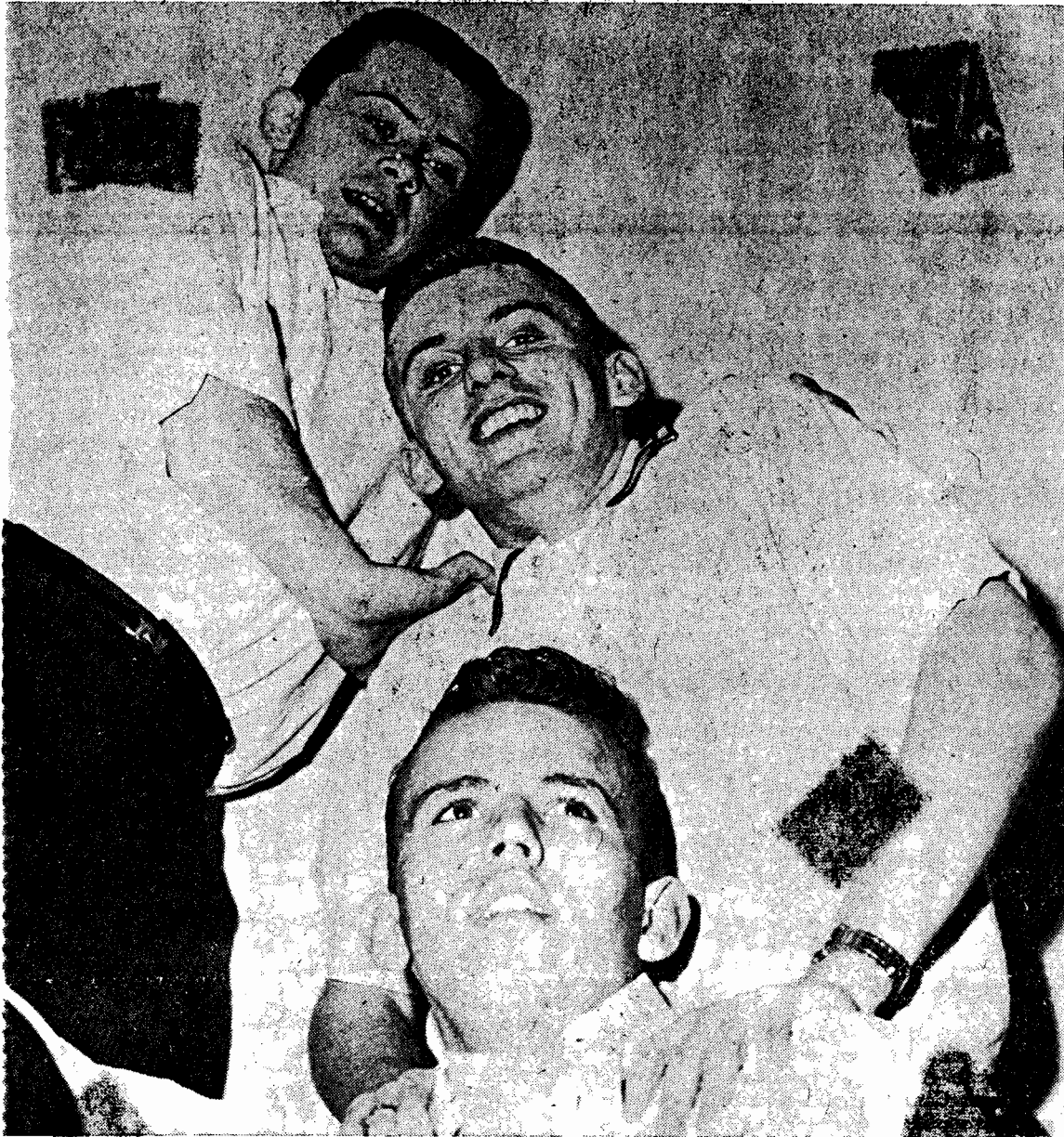
Programs for the big night are almost completely assembled except for the words and title for each class

song. These must be turned in by February 17 at the latest to the program committee in order to be published. According to Joann Tacker, program chairman, it was hoped they will be turned in by today, February 12.

The programs will include the songs, Glee dedication, list of judges, rules for judging and the points system used, names of all committee members and songwriters. Approximately 12 pages in length, the programs have been planned as something very different from the usual.

The souvenir committee by Judy Triplett is planning an innovation in that distribution will be done through the living organizations.

December 4, 1959



Dave Beaton, Glen Downs and Mike Mackedon, top to bottom, think that running for spring Freshman Glee manager takes a lot of push. They're in there fighting before elections. Today is the last day for primaries. Run-offs are Monday and Tuesday. Students may vote in Eaton (Photo by Bruce Black.)

Council Votes For Re-election Of Glee Head

Elections for Freshman Glee manager will be re-run on next Monday and Tuesday with candidates Glen Downs and Dave Beaton vying for the position. Mike Mackedon, a finalist, has been officially disqualified due to a disciplinary probation standing which has been inflicted upon him and the rest of his fraternity pledge class. "This status disqualifies any person from representing Willamette in a position of a social nature," stated Dean Blake.

The decision for a re-vote was unanimously made by student council in its session Wednesday, upon suggestion of the election committee.

Last Tuesday morning the polls were closed due to Mackedon being faced with disciplinary action. Up until this time only 80 votes had been cast, according to Tony Meeker, second vice president. A representative prediction couldn't be compiled due to the fact that only 54 per cent of the freshman class ventured to the polls to vote. "It will be my duty to see that the freshman class gets out and votes in this second election," stated Meeker.

Permanent Date Set for Glee

The first Saturday in March has been set by the Student Affairs committee as a permanent date for Freshman Glee.

A big advantage of having a set date for the annual affair, noted student body president John Bergstrom, is that an open date that won't conflict with other activities will be assured each year. This year the Oregon Methodist Youth conference and Glee will have to share the same date in the spring.

Another advantage to the new plan is that conflict with mid-term exams will be eliminated. By having Glee the first Saturday in March, there will be at least two weeks before exams and in some years, three weeks.

Three Glee Candidates Give Ideas; Frosh Vote Today

The contest of Freshman Glee managers being tossed between the three contenders as primaries are continued from yesterday into today. The three aspirants vying for the traditional position are Dave Beaton, Glen Downs and Mike Mackedon.

INTERVIEWS with the three brought forth the following proposals and ideas for the organization of this year's Glee.

"I believe the Glee program in the past has been too long," commented Beaton, "and that this could probably be improved by cutting out some of the extra singing and lessening the time it takes for judging. I would also like to see a more interesting and entertaining break while the judges deliberate."

GLEN DOWNS propounded "In each class there are people with unique imaginations and I think that the success of Glee depends upon the opportunities and encouragement these people are given to instill their ideas in the Glee itself. I feel that a lot of problems such as rehearsal times, Blue Monday penalties and organization must be faced by people with experience in these things, not by one person alone but by the group."

MIKE MACKEDON proposes his first step in organization would be to appoint the assistant Glee manager as treasurer. "To operate within a budget is one of the most important factors in this feat," said Mackedon. "I would also propose having a 'chairman-vice chairman' capacity in the various committees.

This, the second student body election of the year will be run under the direction of second vice-prexy Tony Meeker by the BAGS and SAX. The new procedure inaugurated successfully this fall will again conduct all voting in Eaton hall, with ballot boxes for each class, employing the system of checking off names from a master list. The last election proved the system record breakingly accurate.

Glee Cut-up Rules Tightened for '60

Among the changes in Glee rules made by the executive Glee committee is a 25 point deduction penalty which will be taken from the point total of any class which interferes with the song presentation of another class. The spring semester class president will judge whether such a violation occurs.

"THIS PROVISION," comments frosh Glee manager Glen Downs, "should curb repetition of past incidents where interruptions of poor taste have detracted from Glee presentations." The criteria for judging will be: music—20 points, words—20 points, vocal rendition—40 points and formation—20 points.

There will be three music judges, three for words and four judges for the presentation which will make the potential point total 360 points. Classes are reminded that all formations must be submitted in writing to Downs by Monday for approval.

Seven copies of the words and music must be turned in to the alumni office by noon, next Thurs-

day. The composition must be written on standard score sheets with the words, melody line and the piano accompaniment included. One of the seven copies must be in India ink.

PARODIES are to begin only after the seniors enter and are sung in sequence beginning with seniors and ending with frosh. A maximum of two parodies will be sung by each class and senior cut-up will be limited to 15 minutes. The wearing of caps and gowns is up to the discretion of the seniors.

A completed, alphabetical list of participating class members must be submitted by each class to the alumni office not later than 5 p.m. next Friday. The gym will not be available for practices before Monday, February 29. There are to be no practices consisting of over nine people outside of those which will be scheduled.

Adds Downs, "It is our hope that students will refrain from making Glee bets which are in bad taste or involve dangerous actions." His committee has asked the lettermen's club to officiate on Blue Monday. All Glee bets are to be paid by noon Blue Monday.

Notice: All Freshmen participating in Freshman Glee

These are your parodies. They have been prepared by some of your fellow classmates and are good. Lets support those who are doing the extra work so that their time will not have been spent in vain. PLEASE SING..

Parody #1-To the tune of "Battle Hymn of the Republic"

The members of the class of '61 are on the ball
They will stand aside and chuckle when the soph-o-mores do fall
Being losers of this glee to the millstream they will crawl
While the freshmen conquer all

As it went with 1960, so it goes with '59
Though they work so very hard too-oo make their bearcat shine
The waste of these long hours for practice is a crime.
Fourth place for the juniors is fine

While the seniors find their comfort in a high and mighty theme
Their plan for winning glee is a truly far-fetched dream
It seems too bad that they cannot find another scheme
The seniors get the stream

CHORUS:

Give the banner to the freshmen, give the banner to the freshmen,
Give the banner to the freshmen, The freshmen will win glee!!!!!

Parody #2-To the tune of "Dark Town Strutter's Ball"

You'll float down the Mill Stream in an ox-cart dad-dy,
Past Saint Lou-is to Wil-la-mette U.
Let's lift those feet high fellas
Jazz it up and win that ban-ner, too
Re-mem-ber if we win that, dad-dy,
All that glo-ry will be ours to share
We'll have the fun with six-ty one,
Now we have you on the run,
Thanks a-lot for com-ing-we're pleased to know you tried!!

This parody will be sung twice...

4 PM
Jan. 20, 1960
Exec. Glee
Council

Dave Beaton.....Entertainment	.	
Bill Hemmingway...Publicity	.	
Judy Triplet.....Souvenirs	.	
Linn Higgenbotham,Ushers	.	
Merle Gillespie...Decorations	.	
John Abele.....Stage Crew	.	Committee Chairmen
Joana Tacker.....Programs	.	
Sue Whitelaw.....Backdrop	.	
Ted Fahlen.....Tickets	.	
Tom Dunham.....Records	.	

The meeting was called to order by the Glee Manager, Glen Downs. It was announced that this council would meet every Wednesday at 4 P_m in Keller Hall, and that henceforth the chairmen were to bring their assistant chairmen with them to all meetings. Tentative deadlines had been set by Glen and Doug Simon, assistant Manager, as follows for the completion of each committee's work;

Backdrop: design completed Feb. 5
 backdrop done Mar. 4

Tickets: no deadline at present

Records: arrangements made by Feb. 20

Ushers: roster of girls Feb. 2

Programs: Printed and delivered by Mar. 4

Souvenirs: completed Mar 12

Lighting: Mar. 4

The record committee reported that the cost of 45 records or long play is being looked into. It was suggested that the committee devote time to devising methods of selling enough records to balance the budget. Said budget was set tentatively as follows:

Souvenirs;	\$ 105.00
Decorations;	\$ 10.00
Programs;	\$ 110.00
Records;	\$ 214.00
Lighting;	\$ 10.00
Backdrop;	\$ 38.00
Tickets;	\$ 17.00
Secretaries;	\$ 5.00
	<u>\$ 507.00</u>

The backdrop chairman reported four possible themes for said backdrop to the committee; a sunset in palm hotel with Glee of Serenade written and lighting from poles that would cast shadows of the people on stage; a trumpet with blending colors- trumpet could hang from ceiling with four dimensional letters spelling Glee coming out of trumpet; an abstract balcony; a music staff with notes and the word Glee. Finally, the publicity chairman reported sending letters to magazines, Parade and This Week, and to the radio stations and TV stations both in this area and up and down the coast.

The meeting was called to order by the manager, Glen. We first discussed rules which the council would initiate and/or enforce. We discussed making rules to cover the showing of disconcerting signs to the performing class by members of rival classes. Deducting 25 points from the total score of the offending class was considered. Since the seniors are traditionally the only sign-makers, however, some members of the council thought this too steep a penalty.

Rules covering the hour of practices were also discussed, the main point of controversy being whether to discontinue or permit five AM practices. The deans and Dr. Purvine have raised a question of health, but we hesitate to drop the hour or so of much needed practice.

Parodies were also discussed, and the following rules were set:

1. Parodies will occur during the challenge assembly ~~only~~, and the class will also demonstrate (use) their marching song at this time.
2. Each class will have only one parody, which will consist of original words fitting a known melody.
3. During the Glee night itself, two parodies may be used per each class.

The schedule of events for Glee night was outlined as follows:

enter
parodies
senior cut-ups
songs

Lettermen will, as in the past, officiate during Blue Monday. They may patrol campus, and shall control undesirable bets (those which are not in good taste).

The meeting was adjourned..

4 PM
Feb. 3, 1960
Committee
Chairmen

The meeting was called to order by the Glee Manager, Glen Downs. The first order of business was committee reports, under which the publicity committee reported an appointment to see Dr. Ruud about radio and television publicity in Portland, Salem, and Eugene. The committee plans to offer each station a record of Glee or a tape to play as a public service. Editors of magazines, the Portland newspapers, and Salem papers are also being contacted.

The recording committee reported that Mr. Conway will cut the records. We will do this more cheaply by using equipment from Will's Music store (Mr. Whipple has a list of necessary equipment).

The souvenirs committee reported that printing is being checked, and that two members of the committee are amateur photographers and will also do the developing.

The programs committee stated that Johnson and Sewert offered them a better estimate than did Knapp. A sample program has been typed and was brought to the meeting for the comments and approval of the chairmen.

The stage committee was informed that they would have to pay the truck driver, and the committee requested a budget to cover this expense.

Glen informed the committee that there will be a Methodist Council of some 1200 on campus on Glee Weekend, and that we will have to plan our uses of the gym, etc. so that we do not interfere with these people.

Meeting was adjourned...

The first order of business was the budget, which stands at present as follows:

Income	
	\$280.00 (administration)
	375.00 (record sales-estimate)
Expenses.....	
	\$105.00 (Souvenirs)
	110.00 (Programs)
	214.00 (Records)
	10.00 (Decorations)
	10.00 (Lighting)
	36.00 (Backdrop)
	17.00 (Tickets)
	148.00 (Piano rental)
	5.00 (Secretaries)
	<hr/>
	\$655.00

Appealing for donations was discussed, and was possible cuts in the list of (estimated) expenses.

Backdrop committee reported that the drop will be 40 feet across (the gym is fifty feet in width). It will have "Serenade" written across it in black cardboard and will reach to the eaves in height.

The ticket committee chairman reported that the tickets will be designed to match the backdrop, and will be printed and delivered by the first of next week. They will be in six colors, one for each section. The University President had 75 seats reserved on the floor of the gym, and the end balcony is reserved for alumni.

The stage crew reported the downstairs will have one center isle, and will be equipped with 530 chairs.

Meeting was adjourned...

Meeting called to order...

Freshman request for more practice time was, after a vote, granted.

Outline of Glee night;

- A. Classes meet - ready to go at 7:30 PM
 1. Seniors - Chresto Cottage
 2. Juniors - Baxter
 3. Sophomores - Music Bldg, recital hall
 4. Freshmen - Waller I
- B. March in order, beginning with the freshmen.
- C. Senior cut-ups
- D. Parodies in order, beginning with the Seniors
- E. Welcoming speech - Bob Hakala, Freshman class president.
- F. Glee Manager's speech - Glen Downs
- G. Glee Songs in order, beginning with the freshmen.
- H. Entertainment
- I. Announcements of winners - Dr. Shultze.

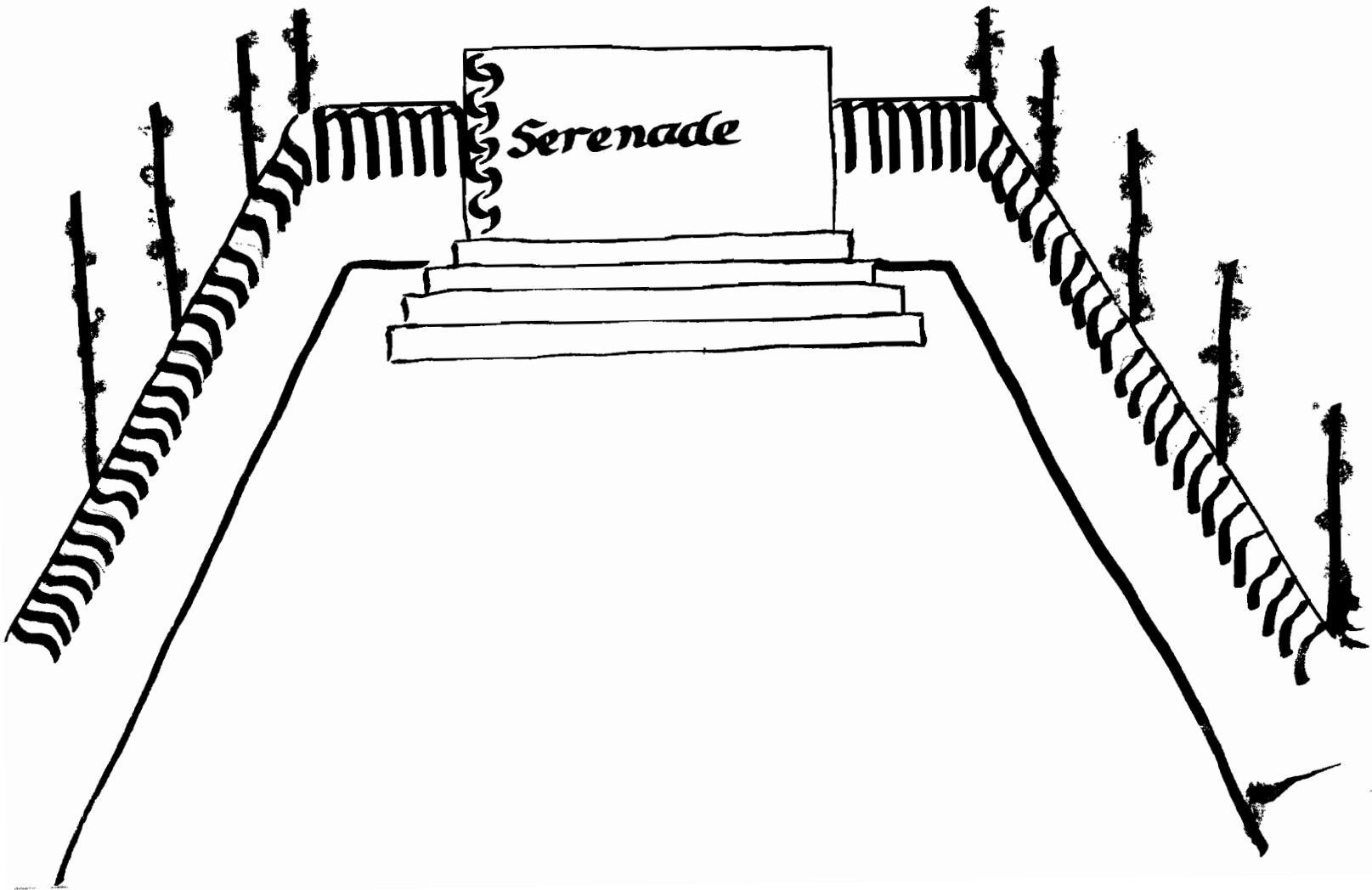
The council decided that each class president would decide which signs if any his class would exhibit. Signs cannot be in view of the performing class when it is actually singing.

usher

Serenade

1960

FRESHMAN GLEE O



March 9, 1960

Dean Melvin H. Geist
1800 Fairmont Avenue
Salem, Oregon

Dear Dean Geist,

I would like to thank you most sincerely for your effort and cooperation in the judging of music*in the 1960 Freshmen Glee. With the close scores recorded, I realize what a task it must have been to rate each entry as accurately as possible.

It was a pleasure to have you with us again this year, and we look forward to seeing you at Glee time in future years.

Again, thank you for your splendid job.

Sincerely yours,

Glen Downs
Glee Manager, 1960

vsm

*insert--words--or--presentation

February 24, 1960

Mrs. Grace Lemm
4717 Verda Lane, N.E.
Salem, Oregon

Dear Mrs. Lemm,

Thank you so much for accepting a position as a judge for the annual 1960 Freshman Glee, March 5, Saturday evening. We hope you will enjoy the program along with your duties.

words
judges

You will receive around February 27, a copy of the words and music of each of the four classes and complete procedure for judging the words in relation to the music. Included in this letter will be the exact time for arriving performance night and all other information necessary. If you have any further questions, please contact me.

Again, we would like to thank you most sincerely for your gracious support of Willamette University Glee.

Yours truly,

Glen Downs
Freshman Glee Manager
Sigma Chi House
Willamette University
Empire 2-9470

vsm

music
judges

You will receive around February 27, a copy of the music and words for each of the four classes and complete procedure for judging the music in relation to the words.

presentation
judges

You will receive around February 27, all information regarding the judging of each class's performance.

JUDGES

These people were contacted by telephone and participated as judges in 1960 Glee.

Music:

Melvin H. Geist
1890 Fairmont Ave.
Salem, Oregon

Mrs. Howard Miller
1048 N. Winter
Salem, Oregon

Mr. Al Robertson
Beaverton High School
Beaverton, Oregon

Words:

Mrs. Grace Lemm
4717 Verda Lane, N.E.
Salem, Oregon

Dr. Helen Pearce
490 Oak Street, N.E.
Salem, Oregon

Mrs. Jean Vancil
Grant High School
Portland, Oregon

Presentation:

Miss Faye Sparks
1165 Chemeketa Street, N.E.
Salem, Oregon

Mr. David Putnam
2745 Nola Avenue, S.E.
Salem, Oregon

Mrs. Alice Rose Jones
782 Main Street, N.E.
Salem, Oregon

Mr. Richard L. McClintic
795 Vista Avenue, S.E.
Salem, Oregon

Glee Rules..1960

1. The theme for the 52nd annual Freshman Glee shall be "serenade".
2. Each class president will act as representative of his own class to the executive committee in case questions arise.
3. Uniforms count no more than what their neatness and uniformity contribute to the judging of the song and formation. Each class will be responsible for financing its own uniforms.
4. There shall be four judges of the song and formation. Each class will be responsible for its own presentation. Three of the judges shall be for words and three for the music. Words shall be judged in relation to the music and music judged in relation to the words. Points will be awarded in the following manner:

I-Music	20 points	3-Vocal rendition	40 points
2-Words	20 points	4-Formation	20 points

The awarding of points for formation will be broken down into the following:

Originality	10
Adaptability (to theme and song)	5
Execution	5

Therefore, the total points will be:

Three music judges at 20 points or	60
Three words judges at 20 points or	60
Four presentation judges at 60 points or	240
	<u>360</u>

*Points will be deducted from the total score of any class which interferes with the song of another class. The number of points deducted will be 25.

5. Glee will be presented with one basic formation in each class. Minor changes that will not alter the size, shape, or theme of the original formation may be used. However, to eliminate any dissention in regard to what constitutes a major or minor change, all formations must be submitted in their entirety in writing to the Glee Manager by 5:00 February 19 for approval. Participants shall not change their relative positions during the singing of the song. The executive Glee committee will be the final authority on what constitutes such changes. Needless to say, all formations will be kept in strict confidence.
 6. The entire formation must participate vocally in the presentation of the song.
 7. Seven copies of the words and music must be turned in the Alumni Office by 12:00 noon, February 25. The composition must be written on standard score sheets with the words, melody line, and the piano accompaniment included. One of the seven copies must be in black india ink. It is recommended that the other six copies be photostated. The title of the song will appear on each score. The name of the song, class, and the person(s) writing the words and music will appear on a separate sheet of paper to be handed in at the same time. The words must be typed and no changes in the words or music can be made after they have been turned in.
 8. No stage properties, nor change in appearance of wearing apparel is permitted. A stage property shall be any item other than the original costume.
 9. Parodies begin only after the seniors enter and are sung in sequence beginning with seniors and ending with freshmen. A maximum of two parodies will be sung by each class. Senior cut-up will be limited to 15 minutes.
 10. The wearing of caps and gowns by the seniors when entering the gym shall be left to the discretion of said seniors.
- II. Friday, February 26, by 5:00PM, a completed, alphabetical list of participating class members of each class must be submitted to the Alumni Office by the class president.
12. No practices will be held before Monday, February 29. The gym will not be available before that date. There shall be no extra practices during the week of scheduled practices for classes or any portion thereof. Scheduled practice time may be used by the classes in any way they feel is the most beneficial to them.

- I3. Since so many guests visit the campus for Freshman Glee, the events of the evening should reflect good taste on the part of the students.
- I4. Failure to comply with the above rules will result in points being deducted from the classes' overall total. The number of points will be determined by the Glee executive committee.
- I5. Concerning Blue Monday: the fourth place class shall be responsible for the Blue Monday convocation preceding their "swim" in the mill stream. Students should refrain from making Blue Monday bets which will physically involve members of the faculty, or which will result in damage to university property.
* The Lettermen's Club has been asked by the executive Glee committee to officiate Blue Monday. This is to insure that no bets which are in bad taste or which involve dangerous actions are carried out.

16. Classes at 11 A.M. Monday will meet Tues. 11 A.M.

BLUE MONDAY RULES 1960

1. The losing class of Freshman Glee will be responsible for presenting the Blue Monday Assembly preceding their swim in the mill stream. All arrangements for said assembly will be the responsibility of the losing class.
2. Concerning the mill stream:
 - a. It is recommended that the losing class wear shoes during their swim in order to avoid lacerated feet.
 - b. When going into the mill stream, the losing class is not to make any attempt to force another class into the stream.
 - c. Due caution should be exercised on the part of all of the classes to avoid any undesirable effects upon the health of the classes as a result of the swim.
3. Concerning Glee bets:
 - a. Students should refrain from laying Glee bets which will physically involve members of the faculty, or which will result in damage to university property.
 - b. Glee bets necessitating men entering the women's living organizations and/or women entering the men's living organizations should not be paid.
 - c. Indecent clothing (or noticeable lack of clothing) is to be avoided.
 - d. All Glee bets are to be paid before 12:00 noon on Blue Monday.
 - e. Glee bets are to be restricted to the Willamette University campus.
4. The Lettermen's Club has been asked by the executive Glee Committee to officiate on Blue Monday. This is to insure that the preceding regulations are observed.

BLUE MONDAY RULES.....1960

I. The losing class of Freshman Glee will be responsible for presenting the Blue Monday Assembly preceeding their swim in the mill stream. All arrangements for said assembly will be the responsibility of the losing class.

II. Concerning the mill stream:

1. It is recommended that the losing class wear shoes during their swim in order to avoid lacerated feet.
2. The losing class is to "take their swim" and leave it at that, with no attempt to bring members of other classes into the mill stream.
3. Due caution should be exercised on the part of all classes to avoid any undesirable results as a result of the swim.

III. Concerning Glee bets;

1. Students should refrain from paying Glee bets which will physically involve members of the faculty, or which will result in damage to university property.
2. Glee bets necessitating men entering women's living organizations and/or women entering those of the men should not be paid.
3. Indecent clothing (or none) is to be avoided.
4. All Glee bets are to be paid before 12:00 noon on Blue Monday.
5. Glee bets are to be restricted to the Willamette University campus.

IV. The Lettermen's Club has been asked by the executive Glee Council to officiate during Blue Monday, to insure that the preceeding regulations are observed.

GLEE MANAGER'S REPORT

In this short paper, I can only give you a brief and somewhat vague idea of your duties as Glee Manager. I cannot describe the responsibilities you have in detail, for an attempt to do so would consume reams of paper and take many hours. Therefore, in the tradition of past Glee Managers, I will give you a preview of what lies ahead.

First, let's not be pessimistic about this thing. It is not an extremely difficult job nor is it monotonous. But since it does call for initiative and responsibility on your part, you must devote yourself to a certain extent.

The first thing you should do after your election is to start investigating this tradition called Freshman Glee; find out what it is about, learn a little of its history and how it has been conducted in the past. Start collecting a few original ideas, and get a background that will make you a wizened veteran of sorts. Then start selecting your committees.

Last year, I put sign-up sheets in every living organization and left them there for about 3 days. On this sheet all interested freshmen were to sign their names and state their particular interests (art, publicity, etc.) After collecting these sheets, I met the Freshman class president, vice president, and several reliable and well-known people and chose from these those who we thought would make the best committee chairmen (there were 11 in all). After contacting them, I called a meeting and oriented them on Freshman Glee, threw out for discussion some of the ideas I had concocted, and let them think about them over Christmas vacation. I believe that this method really paid off and I would recommend it for this year. This should all be done before Christmas vacation.

At the same time you should appoint two Glee secretaries. Believe me, you'll need both of them. Have your Committee heads or chairmen select their committees using the sign-up sheet as reference and then you check their committees for duplication. The committees should also be formed before Christmas vacation so that you'll be "ready to roll" as soon as you return.

Get a reliable, responsible, level-headed assistant manager. His job will be almost as big as your own, and is almost as important. Forget this "be loyal to your fraternity" jazz and use your own judgement. If you get the wrong man, you can wind up carrying a big load.

The Glee organization isn't really a complex one. I rearranged it a little bit last year to increase its efficiency but it still should consist of three major divisions:

1. the general glee committee (which last year consisted of the Glee "anager, assistant manager, secretaries, and the committee chairmen.
2. executive Glee council; Glee manager(who is, by the way, chairman of the group), assistant manager, fall class presidents, previous Glee managers, student body treasurer, president of letterman's club. The principle objective of this group is to advise the Glee manager.
3. Last but not least, the Student Council(Senate), which must pass all legislation which affects Glee.

Now a few pointed suggestions:

1. Put your assistant manager in charge of the budget. This will really take a load off of your mind.
2. Keep in close contact with your committee chairmen and all those connected with Glee. Don't ever, under any circumstances, lose the picture of what is going on.
3. Set deadlines for your committees; times by which they must

have completed certain tasks.

4. Don't worry if you get a little behind- it can't be avoided. But don't get so far behind that you have to strain to catch up. Remember, Glee affects the whole student body and about 2000 others. I wouldn't want to be in your shoes if you don't pull through. You're responsible for the whole thing.
5. Glance through this scrapbook and pick out any good points you see and use them. It's a good thing to follow the advice of last year's committees. They all did excellent jobs.

And now, finally, this is for you personally. You have a big job

and have had no experience in doing this particular sort of thing. It is run on a much larger scale than, perhaps, anything you've done before. And you'll need help.

I'm by nature a gregarious chap and no one knows how much of a job you have better than me. So by all means come on over and see me and we'll spend some time talking about this thing. It makes no difference when; I'm anxious to see you get started on the right foot and do a real good job this year.

Good luck, work hard, and have fun,



Freshman Glee Manager, 1960



ASSISTANT MANAGER

Douglas Simon

The office that you are about to assume involves a great deal of work. However, it is an office which offers a high degree of satisfaction.

As its name indicates, the office will be managed by an Assistant Manager. (It should be recalled that the Assistant Manager is not responsible for the office's performance. This is the responsibility of the Manager. If the Manager is strict and efficient, it is that which will be reflected on every facet of the office's performance. It is not the responsibility of any one of the staff members to cause the office to perform poorly. Do not be intimidated by the fact that the office is a large one. If it is possible to your superior, consider yourself a co-manager, and make your own decisions as to what to do. Do not be burdened with the responsibility of the office. However, do not forget to be a team player. A man in the organization and should be considered as a team member.

It has been decided, and it is a good one, for the Assistant Manager to manage the office. For this reason, organization is being made. I suggest that you look over the subjects for review. This includes the office's current status, the office's performance, the office's financial status, the office's personnel, the office's equipment, the office's instructions for the office's staff, and the office's requisitions.

Until last year, the office's management was handled by two people. This was a very poor arrangement. The office's performance was poor. The office's financial status was poor. The office's personnel was poor. The office's equipment was poor. The office's instructions for the office's staff were poor. The office's requisitions were poor. Therefore, the office's management is being changed to one person.

a one man committee to study the situation and see to their transportation and
tuning. I recommend that you do likewise.

There is really no need for you to read every report in this report.
It will be to your advantage and time saving if you read every
committee report in this book and pay particular attention to a list
of actor butlers written by Glen and his staff. Immediately to the right of many
questions arising in our mind. Do not hesitate for an instant to talk to
me. It would be a pleasure to assist you in any way possible for I can
well understand the feeling which is ahead of you.

As I am a beginner, it is a matter of others' interest and satisfaction.

Best of luck.

Douglas Simon
Assistant Vice-Chairman 1960

REVISED FUND BALANCE BUDGET

Souvenirs	\$ 115.00
Decorations	10.50
Programs	117.00
Records	233.00
Lighting	10.00
Backdrop	25.00
Tickets	17.00
Secretaries	5.00
Pianos	143.00
Publicity	20.00
	<hr/>
	\$ 710.00

Income

Student body	\$ 200
* Records	450
	<hr/>
	\$ 650

* A contract for 300 records has been made. Sold at \$1.50, an income of \$450 would be made. It is expected that additional records will be sold anywhere from 325 to 350.

FRESHMAN GLEE 1960

LIGHTING COMMITTEE

Barney Kliks--chairman
Gary Robinson--assistant chairman
Wes Todd
Charlie Evans
Mike Potter

Your job on this committee is to set up the lighting system for the "stage" in the gym, as there is no such permanent lighting system. Unlike almost all the other committees this committee will not require a great deal of previous planning. All the work except planning the work schedule is done the last week before Glee.

Your first task is to contact Mr. Silke of Vibbert Electric Co. (551 Court Street N.E.). He will provide you, without any cost, the necessary materials for nearly all your work. He will give you five light stands with five sockets each, 25 lights (150-200 watts), five bases for the stands, fuses, tape, and electrical wire. You will have to measure in the gym to find how much you need; we used about 375-400 feet. In addition you will also have to get some stove pipe wire for wiring the fixtures to the beams. Tools are hard to get from the maintenance department and it would be good to find someone who has a tool chest of his own.

You will also need to make arrangements for rental of a 2000 watt spotlight. The man to contact is J. W. Simeral, 2645 Ladd Ave (EM3-6475). Be sure to call at least a month in advance as it is used quite a bit around town. The fee is about \$2.50 for the one night of Glee. Incidentally this will probably be your only cost unless some other special lighting is wanted. This year we set the spotlight up on a platform on the beams so that it could be shined down on the stage for speakers, rather than from the side, which casts a shadow, as was done last year.

Get all your equipment together and start wiring in the lights about 5 or 6 days before the program. The last thing to be wired in will be the spotlight. Mr. Sparks, athletic director, in the gym will show you where the power box is and what lights must be left on during the program. The lights and spot must be controlled by reostats. These can be gotten from the drama department. Contact Mr. Putnam or Mike Potter for use of these, but be sure to do it in plenty of time so the reostats will not be in use somewhere else when you want them. When the lights are wired in check uniformity of the light on the stage with light meter. Be sure to have Mr. Sparks check wiring and to see that you have fuses on hand. Also notify him of any special lighting effects that may be wanted as lights can not be near either any spectators or paper that is not fireproofed.

In the event that TV coverage is used, more wattage will probably be needed. In any event lighting must be uniform as still pictures will definitely be taken.

Also be sure to talk to the program chairman and find out when the lights are to be dimmed, when to use the spot, or any other effects that may be wanted. Use a program as a guide.

A committee of five will be sufficient. During the program, only one person will be needed by the power box and two people up on the platform with the spotlight. Also one person to turn the main gym lights off when the program begins.

Good luck and best wishes for a good job. For any help or questions, see Mike Potter or Barney Kliks

Barney Kliks
Barney Kliks
Chairman

FRESHMAN GLEE
RECORD COMMITTEE REPORT

I. Introduction Bear this in mind: This is probably the most principal and vital committee in Glee

A. Your responsibilities as chairman of the committee are great and time consuming. On the successful execution of the record sales hinges the financial outcome of Glee for the proceeds from these sales compensate for the payment of one half of the expenses of Freshman Glee. This all will entail a great amount of work--be prepared.

B. These demanding responsibilities do not end with the Glee performance but extend for a period of about two months thereafter. Much bookwork on finances is necessary and time consuming.

C. In finances, you will be allotted approximately \$225 for the committee budget. The breakdown typically would be similar to this:

(1) Cost of the recording and processing of (directly recorded) of the Glee records	-	\$200.00
(2) Printing of record jackets (inexpensive type)	-	20.00
(3) Advertising mediums; signs, coupons	-	3.00
(4) Mimeographing of record receipts	-	1.00
(5) Miscellaneous (typing of committee report)	-	1.00

D. Try to keep costs at a minimum (don't overdraw your budget yet don't sacrifice quality by minimizing expenses).

II. Organization

A. Basic nucleus of committee consisting of about 5 members preferably an even representation of the men's living organizations. These must be willing, diligent workers and capable of recruiting for and insuring active record promotion (advertising and selling).

B. This committee will most likely be expanded when the need arises. Make sure you have a reliable, effective selling group organized well ahead of time (at least 3 weeks before Glee).

C. Within the nucleus part, appoint a committee assistant chairman and a head of sales. Needless to say, these individuals must possess certain qualities of leadership and knack for organization. It is the latter's prime responsibility to develop a widespread, successful system of record sales promotion. At times you will have to press some of your staff to gain your purpose.

III. Procedure

A. The first step in this lengthy procedure is to make arrangements for the recording, taping, editing, and the manufacture of the Glee records. The man to contact is Mr. Ray Connelly who has his own recording establishment in Salem and will set up the arrangements

for all of the above measures. He is extremely cooperative and in the past has prevented many possible mistakes from occurring. The recordings of the Glee songs have been done satisfactorily by his firm for the past several years (experience).

B. The transaction with Mr. Connelly will necessitate the drawing up of a contract (typewritten). Confirm all financial arrangements with Mr. Whipple, director of Alumni affairs.

C. Check with the Business office, for confirmation of the times methods, and places where you propose to sell the records. (Dr. Petrie, financial Vice President).

D. Arrange with the student body office for the printing of record coupons to be inserted in the Glee programs distributed to the parents and alumni on Glee night.

E. Records jackets or covers will have to be printed prior to the arrival of the finished products. These will be designed by members of your committee and although not essentially a selling point, these should be appropriate. This last year the firm of ABC Printing did a satisfactory job in the printing.

F. After the arrival of the finished Glee records which should be about mid-April, your committee will have to devise a procedure for distribution to the buyers.

IV. Promotion and Sales of the Glee records

A. This last year, the signs posted at various strategic points on campus were either confiscated or marred by the weather. Considerable time was spent in making these half dozen signs and their ultimate effectiveness is doubtful.

B. Articles about record sales in the Collegian serve as good advertising mediums.

C. The contacting all living organizations via telephone or mimeographed notices denoting the time and place of the prospective recording vending is essential.

D. An attempt should be made to sell as large a volume of records as possible, before or during Glee week while enthusiasm is high. The recommended places for selling records are at chapel, convocation, class song practices (especially the sectionals at the various living organizations)., and possibly in Eaton Hall between classes.

E. The most eager buyers will be the members of the Freshman class, thus try to concentrate on them and make certain that a large majority purchase records. The women of any class are also willing buyers, organize your sales campaign with particular appeal and emphasis on them.

F. The selling of Glee records will be extremely rugged after Glee night, for the enthusiasm disappears with surprising quickness.

a moderate response of about 20 buyers (mostly parents) was the result of the record coupon effort, which makes it a worthwhile endeavor. The records sold in the aforesaid manner will have to be individually mailed to the buyers.

G. All Glee proceeds are to be turned in to the business office for the respective account.

V. Recommendations

A. Be thoroughly organized; have all arrangements planned to the most minute detail. This is especially true in the sales campaign. Be sure you have able, forceful, and effective salesmen working under you; this is a necessity!

B. Plan well ahead making sure of all contacts and procedures.

C. Devise an accurate procedure for recording the buyers' names and accounting the proceeds from the sales. Have mimeographed simple, impersonal record receipts (tickets).

If any questions arise contact either Tom Dunham or Jon Steiner at the Beta Theta Pi fraternity house.

Tom Dunham

Records Chairman 1166

SOUVENIRS COMMITTEE REPORT

It is the job of the souvenirs committee to put out the eight-page picture booklet of Freshman Glee and the events concerned with Glee. Beforehand planning and especially last minute co-operation are essential to avoid the obstacles which will pop up from time to time.

The first thing to do is to organize your committee. This year there were eight members on our committee, and we found this number a bit unwieldy, for though there was a lot to do, there were not enough specific duties for each member. Therefore a committee of four or five would be better. Included on the committee should be someone to do the art work and headline lettering, and one or preferably two photographers. It is handy to have one member in charge of such details as finding out distribution quotas, getting estimates from various printers, and making appointments for committee pictures to be taken. This year Doug Stevenson did our headlines and art work, and Bill Leonard was our photographer. Bill also did his own developing. His expenses came to \$9.60. It would be advisable for your photographer to contact him.

The next step is getting in touch with your printer. This year we decided to change printers. After getting estimates from several printers in Salem, we chose the Knapp Printing Co. In addition to doing a better job of printing, they also glued the pages of the booklet together, and did their own lay-outs. The printing fee was \$135.80, making our total expenses \$145.40.

Though the printers do their own lay-outs, it is necessary for the committee to decide the size of the pictures, the length of their captions, where the pictures are to be placed on each page, and the headline and margin dimensions. So that the printers would know what we wanted, we sketched diagrams of each page plan and submitted these

with our pictures. This is a big job, so don't underestimate the time it will take to do it. We did, and consequently found ourselves behind schedule. Do try to have two photographers. We had only one, which made it necessary for us to use some pictures taken by the photographers from the "Collegian" and "Wallulah". We had a little trouble in securing these from the Dark Room. If you can use all you own pictures, it will save time. Our art work and headlines looked fine as they were drawn on paper, but on checking the proof, we found that printed, they looked pretty sketchy. We had to ask the artist at the printing company then to go over them and improve them. To avoid any delay in printing, be sure your art work and headlines are detailed and finished. Set deadlines and stick to them rigidly! In previous years the souvenirs have come out the week after Glee. This year, they were distributed three weeks after Glee. This was due to our own errors and the fact that the printers required nearly two weeks to do the printing. Keep these things in mind when organizing your time.

We ordered 1300 copies. But this year the "Collegian" was not particularly interested in sending about 100 copies to alums as they have done previously. If this is the case in the future, you should find about 1100 copies quite sufficient.

We changed the distribution procedure this year. Before, the souvenirs have been distributed with the "Collegian". However, in this manner some students took several, while others got none. To eliminate this we distributed correct amounts through the living organizations. Extra copies were put in the Student Office for town students and others who had not gotten their copy.

This about sums up the function of our committee. I hope that you will find some of the suggestions helpful. Good luck, you are in for a lot of work and fun!



Chairman, Souvenirs Committee

1960 Freshman Glee Ticket Committee Report

Expenses: Tickets - \$17.50

Organization: Ted Fahlen - chairman

Co-ordination and supervision of committee.

Bill Moore

Design of tickets.

Walter Vuuren

Sign up and distribution of participating Jr. and Sr. tickets.

John Binford

Sign up and distribution of participating Sophomore tickets.

Ron Brown

Sign up and distribution of participating Freshman tickets.

Procedure: Secured map of gym and found that there were seats for 1479 tickets to be divided into 6 sections, one for Freshmen (342); one for Soph. (324); one for Jr. (165); one for Sr. (160); one for 150 alums, 13 house mothers, 33 faculty, and 64 "extra seats" for emergencies that arise; one for the 77 tickets for the President and 147 faculty members. In addition, 4 seats in each section except the last mentioned section were reserved for Judges, two being placed at each end of each section. Each section had a different color ticket. When design was finished, the tickets went to press. When printed, the alum, faculty, and president tickets were given to Mr. Whipple who distributed them. The rules for tickets were posted in school buildings, living organizations, and the law school. (see attached sheet). A ticket committee member went to the second and third song practices (after arranging time with song leaders) of Freshman class at which time he passed out sign up sheets for first tickets. At fourth song practice he passed out sign up sheets for second tickets. After this was done for all classes, these and the non-participant sign up sheet in the student body office were collected, each was

alphabetized, and the required number of tickets were given to each person to distribute as assigned. At the fifth song practice, the tickets were distributed to participants, and on the allotted day, tickets were passed out at the student body office. The seating was explained to the ushers. Mr. Whittle was a great help.

Recommendations: Have the Collegian print the "Rules for Freshman Glee Tickets" well in advance of Glee. Make certain the law school is aware of ticket distribution. Devise systematic manner for spectators to enter gym and find seat.

RULES FOR FRESHMAN GLEE TICKETS - 1960

Who gets a ticket:

1. Every holder of an ASWU student body card is entitled to one (1) ticket.
2. Participants, including members of the Glee committees, have the first chance to sign up for a second ticket.
3. Allocation of 425 in addition to these to faculty members, alums, and President Smith and the trustees by the Director of Alums.
4. Approximately 50 tickets will also be allocated to judges, house mothers, publicity, and miscellaneous individuals.

How to get your ticket:

Participating students

1. Each student may sign up for his first ticket at either the second or third of the Glee practices.
2. At the fourth Glee practice, students may sign up for an additional ticket.
3. Students may pick up their tickets during Glee practice on March 1.

No-participating students

1. Students may sign up on Feb. 28, 1960 and March 1 and 2, 1960 in the Student Body Office upon presentation of ASWU student body cards.
2. Law students may sign up at the Law Building on the same day.
3. On March 2 students may submit a written statement for their failure to participate in Glee and their need for a second ticket to the Student Body Office. A special committee will consider these requests, and tickets will be distributed according to the committee's decision on March 3.
4. Tickets may be picked up in the Student Body Office on March 3.

These deadlines must be kept and no one may sign up after their respective deadlines.

DECORATION COMMITTEE

Committee Members

Chairman: Merle Gillespie

Co-Chairman: Joanne Gay

Judy Cook

Val Sawser

Gary Mansavage

Pete Knudson

John Baker

DECORATION COMMITTEE

The decoration committee was appointed by the Glee heads and the first meeting was held shortly after. The committee wanted to do more with decorations than committees had in the past, but we were very limited by the lack of funds which was 10.00. This amount had always proved sufficient in the past, but with a female committee head, and wild imaginations it was not enough money. A donation of 500 ft. of corrugated paper helped the committee a great deal as did donations of 24 rolls of black crepe paper, three rolls of masking tape, and 24 large sheets of colored paper. These donations were the only thing that helped the budget balance.

The back-drop and decoration committees hoped carry out the theme better than in years past, so with very mutual efforts the committee heads collaborated (take heed!) and worked the decor to fit in with the drop. The back drop was to be sprayed rose-lavendar and have a black trellis on the left side with the letters Serenade across it. In years past the back drop stood alone with nothing to tie it in with the rest of the gym, but the decoration committee ran their fake wrought iron all around the gym.

Organization began with the first meeting and immediately it was evident who the workers were and who could be counted upon. I definitely feel that each committee head should be given a list of the glee volunteers and be able to choose his own committee, because usually a chairman knows who he wants and who works. Any suggestions from the Glee manager would be helpful, but the final decision should be with the committee chairman.

After deciding the central theme of decor people were appointed to

buy supplies and put in charge of various parts of the committee.

Val Sawser.....roses and armbands
Pete Knudson.....door signs
John Baker.....wrought iron
Judy Cook.....brushes (compliments of the Sigma Chi's) and paint
Joanne Gay.....donations

Armbands: Make approx. forty, big enough to go around the arm (naturally) and have some design,,,or just the word usher.

Door Signs: Check with the chairman of the ticket committee to find out how many signs he wants and where they are to go. This is a most important part as it can mean the difference between mass confusion and order.

Paint: Can be purchased at Hutchenson's paint store at a discount.

Our first step was to secure a place to work, and this was the fourth floor of Waller. You will be able to get this place by talking with Dr. Petrie, but before talking to him plan a definite time, with your committee that you all will be able to work. The time we picked was from 6:30 to 8:00 on Tues, Wed, and Thursdays. No smoking is allowed on the floor as it is a definite fire hazard. Do not fool around with the bell-tower, the windows, or the old years books, tickets, pictures and records that are stored up there.

Our first work meeting was held in the basement of Doney, (which was a mistake...begin work in Waller immediately.) We cut the 500ft. of cardboard into the right lengths for masking and then moved ourselves to Waller where we taped the pieces together so the corrugation ran the right direction and drew, with a pattern, the outline we would be using. We used x-acto knives, single-edged razor blades and anything else we could find to cut the cardboard with. This was definitely the largest job and it took the greatest amount of time. Next, we made our second largest blunder, by taking the cardboard out of Waller and putting it on the gravel by the Fine Arts building so that it could be painted with the sprayer at the same time the backdrop was, but it was too windy... the sprayer didn't work and there was general confusion so it was just

fire-proofed that day..(Get This! Your things must be fire proofed!)

The rolls were brought back to the fourth floor of Waller and hand-painted. A great deal of this work was done by people who were not in the committee, but deserve credit for what they did. You will find many people eager to help always: The black was on and the only jobs left were usher signs that took one-half hour, ticket signs that took ten minutes and 1700 roses that were made out of twenty-five packages of red and pink tissue paper. Val, with Joanne Tacker and Gail Emerson made most of the flowers and the rest were taken to song practice to work on.. (Poor Idea!) A stretch banner was made for the entry way, but it was definitely not necessary and you don't need to bother with on next year. Since it snowed the week up and into glee getting the card board proved a problem, but the Saturday of glee the committee ran them to the gym. The day before glee the poles had been wrapped in black crepe paper and the back, where there could be no wrought iron..(must explain: the balcony facing the backdrop cannot be covered over or heavily decorated because the people in the front two rows will not be able to see..REMEMBER THIS!)...was wrapped also. The back two poles, the side poles and front poles were wrapped in roses and with the balcony it was a very romantic setting. The balcony was wired and stapled on. Four curly cues were made in the back so that it looked like a gate and flowers were hung in great masses.

Once this was up the committee had heart failure when in marched 1500 young Methodists for a conference. Things were trampled and sat on, but by the Grace of God the decorations were completed.

DECORATION COMMITTEE EXPENSES

2 cans black tempera	2.40
2 cans black tempera	2.79
2 rolls of tape	1.96
25 pkgs. tissue paper	2.50
10 rolls wire	<u>2.00</u>
total	11.05

Remember: Begin as soon as you are appointed and get ever thing done as soon as possible. When you are first appointed it seems like an eternity before glee, but it comes up on you Much too fast.

Anyone on my committee will be most willing to help you if you have any problems. Feel free to call any one..any time...Within reason.

Enjoy every minute of this committee because there will be alot of fun that goes in with the work and many new friendships come out of it.

GOOD LUCK!

Decoration Chairman Frosh Glee '60

Merte Gillespie

FRESHMAN GLEE - 1959 1960

PROGRAMS

You are in charge of the design, makeup and printing of the twelve page Glee program.

Pick your staff and get an early start, allowing two weeks for printing time, and that means that the cover must be finished, all information must be gathered, and a complete layout must be made, and turned into the printer at least two weeks before the night of Glee.

In choosing your staff, I found that it is best to pick one person to do all the art work, and then five other staff members. In assigning work to be done, give each staff member two pages and a deadling, allowing about four extra days in case something goes wrong. Each staff member should have all the information, compiled and typed, that goes on the pages assigned to them.

Start getting estimates from printers, I found last year that the most professional job was done by Johnson & Seiwert, EM3-7490, but you pick the one that you can get the best results from. If you choose Johnson & Seiwert, Mr. Seiwert will be able to give you the information that you will need concerning layout, type, cover material, and colors. He will also give you a good idea as to the amount of time needed for the printing processes.

While you are working with the printer, your staff should be calling the class officers, song leaders, and song writers to obtain information as soon as possible, and your artist should be working with the Backdrop and Decoration chairmen to find a theme for the cover that will fit in with the backdrop and decorations.

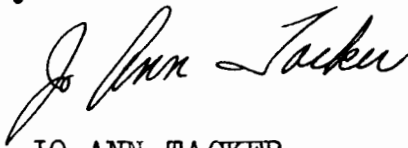
All the information should be typed and put in the order in which it will appear in the program. You will find that it will be rather difficult to fit some songs on the page. To solve this problem, I made a layout of each page on graph paper, and gave the layouts and typed pages to the printer.

I would advise that you let each song writer proof his own song; that way, if there is an error, you will not carry all the responsibility.

On the night of Glee, make sure that the performing students all get a program. We pass out the programs at the practices that were held just before the beginning of Glee. The others were given, one to a family, as the guests entered the gym. When the audience is seated and Glee begins, your job is finished, but don't forget that an accurate report

should be written out while everything is fresh in your mind.

If you are like I was last year, having never attempted anything like this before, you may be doubtful as to where to begin, and what to do. If you have any questions at all, feel free to call me at EM3-4121 or EM4-6511. I will be very happy to do all that I can to make this year's Glee as wonderful as last year's'.

A handwritten signature in cursive script that reads "Jo Ann Tacker".

JO ANN TACKER

PROGRAMS CHAIRMAN

Stage Committee

Chairman: John Abele

Assistant: George Douglass

Those on the Comm. who might also be of help if it is impossible to contact any of the above for any reason.

Pete Ebner, Weldon Duxton

I. Purpose:

- A. Determine the need for and set up approx. 500 chairs
- B. Stretch out canvas on gym floor
- C. Set up the risers
- D. Be Responsible for erecting the backdrop

II. Equipment:

A. Chairs

Music School	30
Law School	120
Waller Hall	29
Under-South Hall	140
Unstairs in Gym	15
Fine Arts (stce.)	90
Eaton Hall	60
<hr/> total	<hr/> 514

B. Canvas floor covering

Stored by Mr. Sparks in gym
Comes in to sections to be laced together

C. Risers

Found underneath gym on the east end easily accessible
by a door located underneath the cement steps of the gym
25 risers with 5 of each size in the 5 different graduated
groups.

Tallest risers are the farthest toward the rear of the group
Each individual riser has a surface dimension of 4 by 8 feet

D. Backdrop

Found in Fine Arts building
Painting done by a separate comm.
Comes in 5 sections, each approximately 5 by 15 feet

Techniques

Select, limit, and contact a committee of approximately 8 men to be the nucleus of a larger committee. Do this 2 months before Dec. These men should be chosen from at least 3 or 4 different houses so they will be able to help increase the committee size by pulling in their various friends. About 5 weeks before Dec talk with the invaluable Mr. Sparks.

Techniques (cont)

Then in about 3 weeks before Glee talk again with Mr. Sparks, and find out if there are any conflicting meetings or basketball practices scheduled for the gym during the week before Glee. Also arrangements for the use of the school truck and driver should be made with the head custodian. The use of the school truck and driver seems to be part of an archaic pattern and if some truck, a pickup, could be borrowed, this part of the budget could be completely eliminated. This part of the budget can also be eliminated by using the driver during his regular hours, because he is already paid by the University during his regular hours. There is no charge for the use of the truck as long as their driver is behind the wheel.

With a week or two left, it is now time to increase the size of the committee to approximately 20. At this time also wise to go around to the various buildings and determine the number of chairs available. It is also advisable to consult the formation leaders and then make out a seating chart. Sometimes there aren't enough chairs available on campus in which case dealing with a firm such as APC Rentals are necessary.

Next it is extremely urgent that a program of the practices be obtained from the Glee Manager. Having this list enables one to know when his dead lines will have to be met.

By Monday morning of Glee Week the canvas and the risers will have to be set up in the west end of the gym. This will probably mean putting them up on Sun. as there are often functions during the week ends. Soon the chairs should be set up so as to allow the practicing classes a chance to find their seats in more realistic surroundings. This could be done in two parts and total time is estimated at around five hours together.

The day before Glee the backdrop should be set up on the last six or so inches of the highest level of risers. The frames of the backdrop should be nailed together and then hooked in aggregate to the metal railing of the gym balcony.

On the day after Glee all equipment should be disassembled and put away.

Possible Budget

Truck driver \$ 1.50/hr.
Rental of chairs

Ann Miller
Beta Theta Pi
EM 2-9246