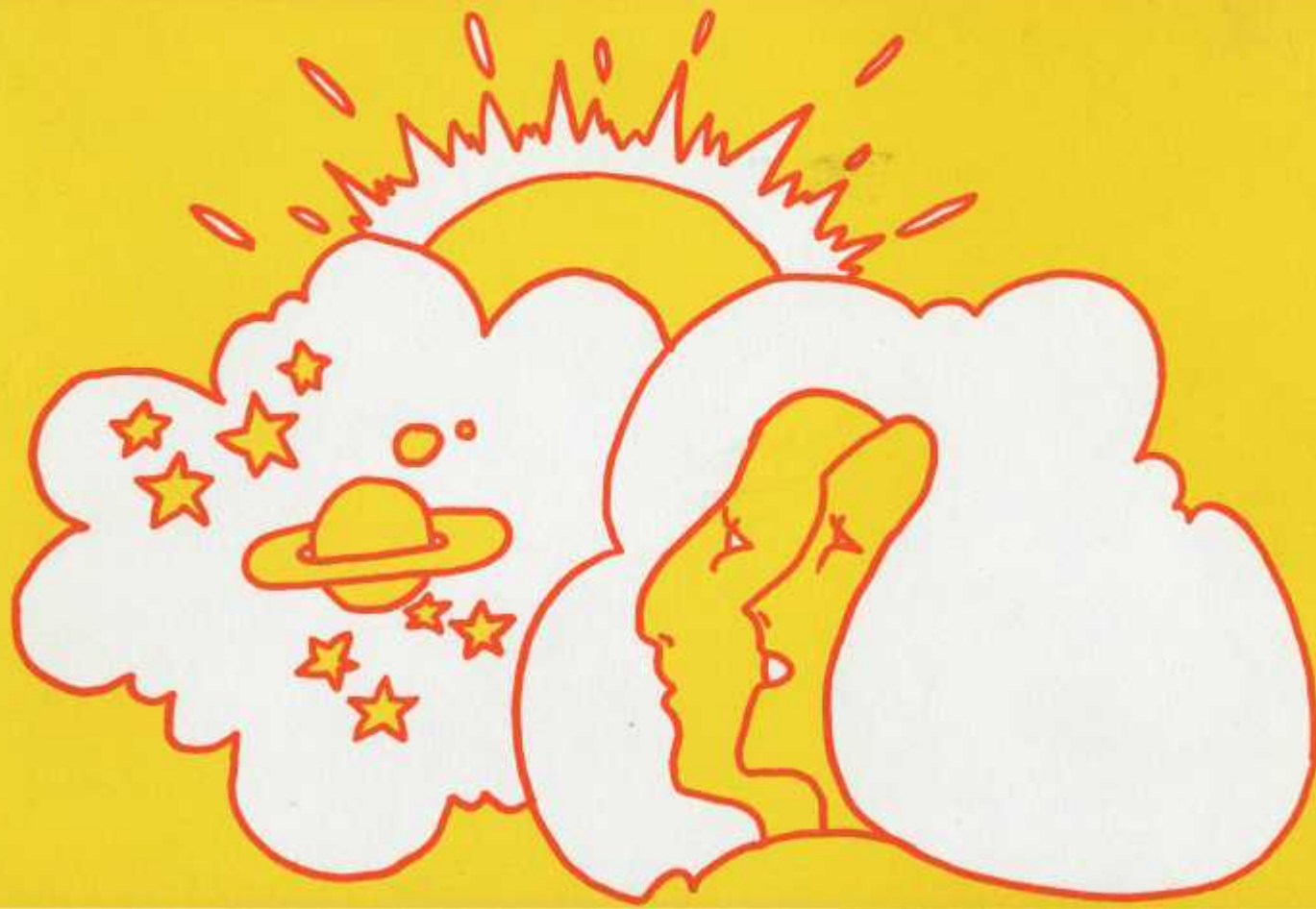


Freshman Glee



1
9
7
3

THE CLASS OF 1976 heartily presents

Together & Beyond

the sixty-fifth annual freshman glee

WILLAMETTE UNIVERSITY
April 14, 1973 8:00 p.m.

Dedication . . .

Freshman Glee has remained one of the few traditions at Willamette. Part of Glee for the last fifty years is the gymnasium where we are gathered tonight. It is to this gymnasium that glee is dedicated. It is not only the fiftieth anniversary of glee being held here, but it is also the last year, for next year glee will be moved to the new Physical Education and Recreation Center.

Glee was first held in Waller Hall in 1908. In 1916 Glee was moved out of Waller to the Salem Armory due to lack of room. Then again to the First Methodist Church, and finally back to campus and into the gymnasium in 1923. So, as the sixty-fifth Glee presentation ends tonight, a special part of glee will end as well.

Welcome Address

Good evening! Welcome to the 65th Annual Freshman Glee Competition at Willamette, presented by the class of 1976. We Hope you have a good evening and enjoy the competition. It was a lot of fun getting everything organized and on the road. Much appreciation is extended to those people who helped in preparation for tonight. Thank you for coming, and enjoy your evening as we go Together and Beyond.

The Glee Staff

Freshman Class Address Kathryn Tryck

Freshman Glee Manager's Address Dave Lambert

"There Are No Good-byes" Class of 1973

"Love and Harmony" Class of 1974

"Dialogue to Synthesis" Class of 1975

"Together and Beyond" Class of 1976

Entertainment

Presentation of the Decision of the Judges Dean Yocom

On Judges and Judging

For the purpose of judging, the elements of competition in Freshman Glee are divided into three categories. A panel of judges has been designated for each category. Using an established point system, each judge will rank contending classes from first to fourth place in each category.

Words and Music are evaluated together. First place will receive 10 points; second place, 8 points; third place, 6 points; and fourth place, 4 points.

—Judges for Words and Music:

Dr. Hunter Moore; Dr. Stanley Glarun; Mrs. Franklin W. Ott

Vocal Rendition will be judged on the basis of tone quality, diction and expression. First place will receive 10 points; second place, 8 points; third place, 6 points; and fourth place 4 points.

—Judges for Vocal Rendition:

Dr. Paul Trueblood, Glen Harman, Mike Stone, Prof. Robert H. Hess

Formation points will be awarded for precision and originality of singing formations. First place will receive 10 points; second place, 8 points; third place, 6 points; and fourth place 4 points.

—Judges for Formation:

Hoyt C. Cupp, George C. Hanauska, S/Sgt Cafferty, USMC..

This yields a total of ten judges awarding a possible 100 points to the winning class.

“There Are No Good-byes”

*I am on a journey, a sometimes lonely road,
Trau'lin, cross many oceans and deserts,
And with ev'ry step, I draw closer to my final destination.
Until I tread the valleys,
There are things that I don't know.
I see the sunlight behind the mountain,
And that's the place I must reach.
I'm climbing up the steepest mountain,
To the voice that is beckoning me;
To the place where one becomes we.*

*Right now I can't turn around,
To hear the stream trickle a mile back,
No I can't turn around,
To tickle the love that made you laugh.
Right now I can't turn around,
To return to the joys of the post.
But I can't turn around,
To watch you grow.*

*There are no good-byes.
So let no tears enter your eyes.
Together we will always find,
The joy that made the love shine.*

*In the mixed feelings of exuberance,
On the discov'ry of this brand new life,
My tears fall, when I think of mine.
Then I more than realize.
Temporarily, evrything must end sometime.*

*Every winter, green leaves the trees,
Every spring, ice unveils what used to be.
Yes, ev'ry summer, snow fades to brown,
And ev'ry fall ends in silent sounds,
Then ev'ry winter begins again.*

*Every day a suckling child is born.
Every week he grows while mother adores her child.
Every year he makes friends to mourn.
Every Memory when he's gone.
And ev'ry child is born again.*

*There are no good-byes,
So let no tears enter your eyes,
I'll be gone only a little while,
Then I'm comin' back to you,
To share with you sweet, sweet love.*

*Let's go party and be alive,
We've got time to make it last.
Cherish these few moments that we've got left,
Don't think of the past.
All the pleasures I've seen, you will see too.
All the joys I've known, I'll give to you.*

*Don't be afraid to give something new a try.
Experience we've learned soon teaches what's right.
Yes, There will be times when you won't want to carry on,
But just look out your window, even the rain has its song.*

*Looking ahead I see sunny days,
People working all together,
Letting love lead the way.
This is my soul and inspiration,
Ain't nothin' gonna stop us now.
Come to the Fantasy world, and see how it is!*

*And we'll love one another, this I know!
And we'll need one another, that's the way life goes.
Yes we'll see one another, wherever we go!
This I know.*

*There are no good-byes.
So let no tears enter your eyes.
Together we will always find,
The joy that made the love shine and you.
This will give me strength, to carry on,
Without the ones I've depended on!*

—Words and Music by:

John West

—Formation Leader:

John Welty

“Love and Harmony”

*We touch the light and ary sky, in the heavens high.
Upon a cloud of our dreams reaching out for what
 may seem a reality
All we can do is*

*When does our journey end?
As the sun light softly bends.
It's warm and tender rays
Upon our lonely day,
Still we touch the clouds
And sing our song aloud,
Aloud for all to hear
Of the dreams we bear.*

*Our hopes of dreams and peace
When do we learn to love
Love our brothers here above,
he earth so high among the clouds,
We touch the sun,
We shall not run,
And reach out for someone,
Someone to share amoung
The heavens our happy song.
Dreams that do belong.*

*Our dreams of hope and peace,
Dreams of hope and love.*

*We travel on and on
Together and Beyond
On this cloud of our dreams
For it seems there's no one,
That takes the time to share
With our dreams and cares.
So we travel on
Together and Beyond.*

*Dreams of hope,
Dreams of peace,
Dreams of love and harmony.*

*—Words and Music by:
Chris Culver
—Formation Leader:
Dale Sause
Mike McKiernan*

“Dialogue to Synthesis”

*Remember the innocence
As a Child long ago
The world gave me encouragement
But from that place life bid me go.
And all the glory has seemed to leave
My soul alone is left to grieve.*

*Since that time of happiness
I've walked the dusty road
The world drove me to maturity
And I took up my load.
But deep inside my heart resists
I can't travel on like this.*

*Cry your heart out
There's nothing you can do*

*People never really were
Able to be true.*

*Life is just an emptiness
Of solitary pain*

*You can try to find yourself
But all you'll do will be in vain.*

*Tis not man's fate to sell his soul
But to strike out boldly and command the whole!*

*We have so much to love,
We have so much to try,
We have so much to give,
So much to live,
All of our lives,*

*So much to see,
We have so high to climb,
We have so much to be,
One life to lead,
With so little time.*

*Someday you'll see what
The struggle to live is for,
There'll come a day
When you'll think of this song,
Wake up and look out
And see what surrounds you,
Better prepare for it won't be too long.*

*There's so much, so much of life ahead
There'll be time, time, time,
Enough for the rest of my life.
So pick up your pace
And strive for your rightful place!*

*There's a feeling, feeling down in my soul,
And the time to raise my voice is now at hand,
I feel the drive, to be alive,
Determined I'll strive, to make my stand!*

Don't tell me!

Don't tell me!

Can't take it!

*I never want to stop moving forward,
I'll never need to look behind,
Cause I can't live for memories,
There's a lot more left to find.*

*There's so much to be attained,
And still the Styx to cross,
But first I'll weigh just what I've gained,
And ponder what I've lost.*

*And when the sun shines,
I'll be shining too,
And I'll have another innocence,
That will bring me life anew.*

—Words and Music by:

*Stephen Sloan
Mark Scranton*

—Formation Leader:

Leanne Elliott

“Together and Beyond”

*As we begin this trying journey leading to our separate goals
The weary travels lay before us upon the sea our fortune's flow
As breezes blow the waves around
Capturing the misty sounds
That frame the picture that we see
And save it for eternity.*

*Will we find our way?
And have our debts all paid
Can we get a start?
Well, if not, we all split apart.
We must all join our hands and walk together.*

*Once we've found our strength together the doors will all be open wide
And trust serve as a key forever to let our sturdy crew inside
But more than this will be the many memories of our true bond
And so we will all live in truth Together and Beyond.*

*Will we find a way?
Have our debts all paid
Can we get a start?
Not if we split apart.
Is the passage clear?
Nothing we should fear
If we act as one together and Beyond.*

*—Words and Music by:
Gregg Capp*

Freshman Glee Committee

<i>Freshman Glee Manager</i>	<i>Dave Lambert</i>
<i>Assistant Glee Manager</i>	<i>Robert Schmidt</i>
<i>Executive Secretary</i>	<i>Lynne Crosset</i>

Publicity

*Bob Lumm
Nancy Cowles
Kit Concannon
Nancy Yokom
Holly Held
Katie Walwyn
Jonette Haley
Lynne Harris
Diane Martin
Heidi Bokicles
Eileen Thomas
Rainy Deland
Janine Barnett
Rhonda Waring
Mike Lawrence

Sarsh Stewart
Doug Kays
Mark Jensen
Tara O'Keeffe
Joanne Atwell
Becky Moffat
Barb Napp
Cindy Moomaw
Elisa Haffner
Jonette Haley
Rhonda Waring
Diana Hoffman
Mary Ann Washburn
Nancy Yocom
Polly Wales

Nancy Glass
Nancy Cowles
Barb Napp
Christina Taylor
Janet Herrin
Sally Rose
Kim Jessel
Patti Strickland
Ann Lowe
Jaclyn Coakley

Ushers

*Mary Ann Washburn
Nancy Cowles
Deby Barnhart
Cathi Price
Melody Austin
Kim Jessel
Janet Herrin
Sally Rose

Banquet

*Lori Lash
Susie Wiser
Mary Craford
Gretchen Coburn
Stephanie McDonald

Backdrop

*Margie Christensen
Marilee Dawley
Steve Noack
Linda Benedetti

Programs

*Jonette Haley

Tickets

*Kit Concannon
Katie Walwyn
Tim Bunger
Ron Yam

Decorations

*April Gormsen
Marsha Hawkins
JoAnne Atwell
Becky Moffat
Lynn Kawasaki
Cesily Kawakami
Mary Billingsley
Rainy Deland
Janine Barnett
Rhonda Waring

Diane Hoffman
Mary Anne Washburn
Kim Jessel
Nancy Parish
Polly Wales
Ann Lowe
Jaclyn Coakley
Kathy Sulaver
Kerri Hadoka
Kay Dolezal
Doug Kays

Photography

*Bob Schmidt

Set Engineers

*Steve Stoyhoff

(*) *Committee Chairman*