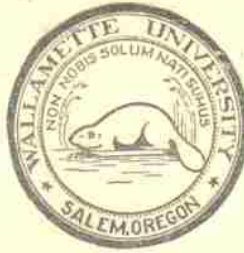


Queen Frances Will be Crowned Next Saturday. All Events Will Occur as Scheduled For Last Week-End.

WILLAMETTE



COLLEGIAN

Buy Your Tickets For the Glee Club Concert Today. The Advance Sale Assures a Packed House.

VOLUME XXVII—No. 27.

WILLAMETTE UNIVERSITY, SALEM, OREGON, MAY 16, 1916.

PRICE—FIVE CENTS.

NOW YOU KNOW NOW YOU DON'T

Professor Matthews Defines "Fourth Dimension" in Simple Terms.

LARGE CROWD ATTENDS

Lecture Is Final Number of Faculty Series—Audience Is Mystified—Some Are Convinced, Some Are Not—Consistency Not Truth Is Mathematician's Aim.

For the last number on the faculty lecture course, Prof. James T. Matthews gave his address on the "Fourth Dimension" in Waller chapel Monday evening before the largest audience that has attended any of the lectures during the year.

As a whole the address was intensely appealing, solid and very original, which limits a just characterization of it without direct references from the lecture.

Professor Matthews gave to his hearers some surprisingly new ideas along the line of mathematics in its relations to the unknown. These may be best touched upon by the following parts taken from the lecture:

What the Dimension Is.

"Measure an object in one direction; call that the length or first dimension. Measure a line perpendicular to this and call it middle or the second dimension. Measure a line perpendicular to both of these in the other direction and call that depth or the third dimension. By analogy, then, and correspondence of parts, the fourth dimension is a length or distance measured on a line perpendicular to the other three dimensions. The Invisible Needle.

"A needle extending from a pin-cushion in the fourth dimension would not be visible to our eyes and would be outside of any movements we could make in attempting to touch or strike it. Well, this fourth line perpendicular to the three perpendicular lines is not for sense, nor for imagination, nor for belief, but an object of that.

"The pure mathematician is concerned with consistency of doctrine, not with truth of doctrine.

"It may or may not be true that there is a fourth dimension, but if a pure mathematician can build up a perfectly consistent and compatible

Matthews and Von Eschen to Conduct Extension Work

Extension work this summer will be carried on somewhat differently than last year for professors as well as students will be sent out to address prospective students. Both Prof. Matthews and Prof. Von Eschen will be engaged in this work. Considering their extended relations with the institutions to be visited, they are well qualified to carry on such extension work efficiently.

They will travel in several districts that hitherto have never been visited.

"And of all the towns in Ireland, Jerusalem for me."—Ex.

PAGEANT PLANS ARE UNDER WAY

Senior Playwrights Have Two-thirds Written.

Early Oregon History to Be Graphically Reproduced—Will Be Staged Southeast of Gymnasium—MacMurray Writes Music.

That the great historical pageant which the senior class will present during the seventy-second annual commencement exercises will be an unqualified success, is the belief of those students privileged to see the rich assemblage of Oregon romance incorporated within its confines. The fact that the senior playwrights, Miss Frances Githins and J. Read Bain, have already written practically the entire first and second parts and have almost completed their plans for the third part shows the stupendous task already well on the way toward completion.

The first part including the "Prologue" deals largely with scenes typical in Balch's Oregon classic, "The Bridge of the Gods," before the coming of the white men to the country "where rolls the Oregon and hears no sound save his own dashings." It includes a spectacular "Dance of the West" followed by a powerfully dramatic scene between Snoqualmie and Wallulah on the portage on the banks of the Columbia river shortly after the "Bridge of the Gods" has fallen. The action proper following is almost directly based on the historical incidents portrayed in the Balch story.

Historical Struggle Depicted.

For the action of the second part the dramatists have elected to present the keen but ever friendly struggle between the Hudson Bay representatives and the Methodist missionaries for supremacy in the wild Oregon country. Here will be seen exact replicas of significant events in Oregon history as scenes between Jason Lee, William Stocum, John McLaughlin, Phillip Edwards, and other important personages of early days. Announcement concerning the third part will be made later.

The pageant will be staged under the great fir trees on the knoll behind the gymnasium and will be given at night. Fred McMullin is already making plans for the electrical effects. The personnel of the cast will probably be announced next week. Professor MacMurray has already set many of the lyrics to appropriate music. Critics of the lyrics, prose passages, and music already written announce them to be of true poetic merit.

W. U. Marksman Are Crack Shots.

Bronze medals will be awarded to four Willamette members of Company M of the U. S. G. who qualified as marksmen in record practice at Sunday's rifle range. All of the men succeeded in getting more than the required 150 out of a possible 250 points at varying distances. The men are: Roland Jeffrey, John Gary, Howard Rogers and A. A. Hall.

Prof. Matthews Discusses Heavens.

Prof. James T. Matthews, who is always in demand for his addresses, gave a lecture on "Astronomy" Monday evening, before one of the local Chautauqua circles which is making a special study of this subject.

Oklahoma has four track men this year who have stepped the mile under 4:40.

JUPE'S BUCKET UPSETS MAYDAY

Rainy Weather Forces Manager Lyon to Postpone Ceremonies.

SATURDAY IS NEW DATE

Events to Appear as Scheduled for Friday—Coronation to Occur at One O'clock—Tug-of-War, Tub Race and Prom to Follow—Visitors Will Be Missed.

Manager Lyon has decided on a definite date for the May Day program and it is highly probable that Saturday, May 13 will prove a successful time for a review of the events that were to have occurred last week-end. Everything is in a state of readiness and, although many of the visitors will be unable to return, the townspeople are eagerly awaiting this date.

The long-looked-for tug-of-war and



AUBELLA FERRIS CHACE Assistant Director.

tub race will have a prominent place on the program as well as the disposal of the green caps. Arrangements are being made for an athletic contest of some kind to provide entertainment in the afternoon and the tennis matches that were to have been played, will be a certainty for the morning schedule.

Because of the abundance of rain during the past few days, Saturday bids fair to be a model of spring weather in which to carry out the crowning ceremony. The "movie man" who was forced out by the rain last week, will again be in evidence and it is hoped that everything will be even more successful despite the delay.

Interest will reach its highest point socially with the Junior Prom Saturday evening at 8 p. m.



MISS ESTHER PAULINE COX Piano Soloist.

CROWDS ENJOY MAY BREAKFAST

Sublime Waffles Tend to Rejuvenate Humanity.

Lausanne Is Mecca for Annual Open Air Meal—Dainty Co-Eeds Clap-crowns Eats—Over Seventy Dollars Is Cleared for Y. W. C. A. Work.

In spite of the unfavorable prospects for sunshine Friday morning, the Y. W. C. A. girls and assistants appeared at Lausanne at 5 o'clock, prepared to launch the sixth annual May morning breakfast. Soon the fires were built and the kitchen became blue with smoke from the heating waffle irons, and the air fragrant with the odor of sizzling ham and eggs and the sweet aroma of coffee.

Miss Aetna Emmet, president, of the Y. W., added a festive air to the occasion by wearing a clever chef's cap. Miss Emmet with the worthy assistance of Beryl Holt, baked the delicious biscuits.

Waffle Sharks Re-Enlist.

Miss Gertrude Ealdin, '15, and Miss Alice Fields, '15, former expert waffle makers, initiated Mary Eyre and Caroline Sterling into that particular phase of the culinary art. Tinkham Gilbert, Errol Proctor, Charles Randall and John Gary flipped the waffles in fine style, while Merrill Ohling dispensed them to the hungry crowd outside. Lloyd Shisler and Raymond Archibald were

JUNIOR ANNUAL IS GREAT BOOK

Appearance of '17 Wallulah Is One Bright Spot of Gloomy Day.

JOKES ARE ELIMINATED

Distinctly Original Is Earmark of Publication—Gold Borders Are Unique Feature—Social Annex Pleases With Numerous Illustrations—Snapshots Are Numerous.

Saturday, May 6, was saved from complete disappointment by the appearance of "The Wallulah," published by the class of '17. Engrossed in its pages, every one forgot the pleasures which might have been theirs had the weather permitted and spent the afternoon happily indoors.

The Wallulah this year is one which will repay the class for the effort put forth. To quote from President Doney, "It is certainly a



DR. FRANK WILBUR CHACE Director of Music.

book which we can be proud to send out as representative of our school." The Wallulah has always been a credit to Willamette; but each year witnesses a marked advancement.

Characteristics Are Distinctive.

This publication has many distinctive characteristics. The gold scroll bearing W. U. and '17 on each page is something entirely different from previous years. The absence of jokes or slams on the various students is another feature that calls forth favorable criticism. Page after page of snapshots interest without the slightest inconvenience, a fact almost inconceivable from the remembrance of the number of times such a book must usually be turned sideways to see all the views presented. Individual pictures of the various athletes each presenting a characteristic atti-

Twisted Ligaments Serve to Disrupt Track Squad

Hard luck has been pursuing the cinder path enthusiasts lately. Bert Ford is laid up with a twisted tendon. Grosvenor is suffering from a general relapse of his sprinting muscles, and Jackson is in the hospital with tonsillitis. Small has not reported for practice since the interclass meet. With careful training for the next two weeks Matthews hopes to work off these ailments and have the men in condition for the non-conference meet at McMinnville May 20. An attempt will be made to stage a meet on the local field next Saturday to accentuate the postponed Mayday exercises.

CONCERT TOUR IS SUCCESSFUL

Willamette Quartet Is Well Received During Winter.

Nearby Towns Are Easily Captured—Credit Is Due Dr. Chace and Manager Ford—Will Appear On Glee Club Program May 17.

One of the greatest factors in making Willamette university known to the people of the western part of the state this winter has been the work of the Willamette quartet. Going out during week-ends and vacations, its members, appearing under the auspices of the local high schools, have introduced Willamette in "song, story, and rhyme" to twenty-one towns within a radius of 200 miles. Enthusiasm marked their reception everywhere and the members report much success in arousing interest among high school students in the advantages afforded by the institution. During examination week the quartet toured the lower Columbia River region and during spring vacation covered the upper Willamette valley.

Great credit for the success of the organization is due Manager Burgess P. Ford and Dr. Frank Wilbur Chace who has had the men in training since last October. Those giving the varied program of college songs, readings, piano selections, pranks and general collegiate entertainment are Gustav Anderson, first tenor; Laban Stevens, second tenor; Roger Lyon, baritone, and Harry Bowers, bass. As accompanist and piano soloist, Miss Esther Cox plays with an executive dash which always calls for an encore.

These talented musicians will appear in recital in connection with the combined glee clubs at the First Methodist church Wednesday evening, May 17. In addition to several solos and quartet numbers, Mr. Anderson will give one of his inimitable readings, which have literally "brought down the house" in every concert this winter.

Roast Pork and Gravy Assist in Alleviating the Cares of Rainy Celebration

After creating a "stupendous" appetite in a series of "aesthetic revolutions" and sundry gyrations with the Virginia Reel, those students who had long ago deservedly earned several meals by cleaning the campus, presented themselves and their friends at the ingeniously contrived cafeteria counter under the gym bleachers. An abundant supply of sandwiches, roast pork, gravy, potato chips, shrimp salad, coffee, and the "Soft Special" oranges were served. So great was the ensuing enjoyment that a suggestion to continue the feeding afterwards was unceremoniously overlooked. All present felt that the rainy day was not lost. Credit for the attendant success of the feed is due to the committee consisting of Gertrude Cunningham, chairman, assisted by Lucile Jaskoski, Evelyn Cathey, Harold Miller and Paul Miller.

Dean Alden Changes Residence.

Dean George H. Alden of the university, is today (May 5) moving from his former home, 165 Seventh street, to "The Maples" on Liberty and Chemecketa streets—Capital Journal.

JUNIORS STAGE NOYES' TRAGEDY

Amateur Thespians Presentation of "Sherwood" Thrills Capacity House.

"THE PLAY'S THE THING"

Interpretation of Roles Is Excellent—Historical Settings and Splendid Master Make Great Appeal—Honors for Cast Won. Cast—Marian, Elinor and Shadow-of-a-Leaf.

(By Perry Prescott Reigelman.) It has been my privilege and pleasure to attend the splendid staging of the human race for freedom, and the Juniors could not find a better vehicle for the telling of a vital story of struggle, of loyalty, of self-sacrifice, a story that carries a lesson greater than many sermons. It is full of charm, beauty, sweetness, ruggedness, and hopefulness. And, while the production was long, it held the attention, and was acted with an earnestness that indicated careful study of the characters by the youthful actors. To make the people of the play live is the general problem for actors, and there is no question but that the people in "Sherwood" lived, loved, sorrowed, were made happy, faced death with bravery.

"Sherwood" Truths Will Live. The Juniors of the Willamette and Professor MacMurray have done that of which they may well be proud, and it is to be hoped that Junior classes in the future will follow their example. It is ventured that the truths embedded in the lines of "Sherwood" will live in the hearts of the members of the cast longer than some of the most impressive prescriptions emanated from the chapel platform by the dig-

nified professors. Why? Because at the time they lived those same truths. Truly Shakespeare said, "The play's the thing."



MISS LEILA BELLE MCCADDAM Soprano Soloist.

If I should undertake to say what I think about the impersonation of Maid Marian by Violet Macdonald, the good friends of the other members of the cast would say I was partial. In the lighter moods, she has a personality that captivates, a naturalness that is the despair of experienced artists; in the tragic moments, however, she is not so sure of herself. But she was Marian, and it is no wonder Robin Hood fell in love with her. She was winsome, a maidenly maid. I need not be pressed to say she carried the chief honors of the production. Should she continue dramatic work, there is no question but she could make a name for herself.

Miss Gilbert Achieves Success.

The villainess generally plays opposite to the heroine, and in the dependable role of Queen Elinor, mother of Prince John, the villain, Rosa-

(Continued on page 4.)



MISS FAYE JANETTE BOLIN Piano Soloist.

system of geometry based on the hypothesis of the fourth dimension, then that is all right, no matter if there is not a word of truth in the whole scheme, or if it is entirely at variance with all other mathematics. Well, that is precisely what the fourth dimension geometer does. By a series of examples, we will assume that it can be done, and you can see that certain conclusions or consequences would necessarily follow, and a complete geometry of fourth dimension can be built up by pure reasoning.

Here's Some Teasers.

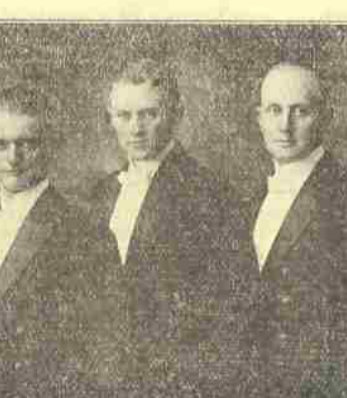
The following are some interesting facts which mathematicians have worked out:

- 1. A sphere may be turned inside out without tearing.—Prof. Newcomb.
- 2. An object could be passed out of a closed box or room without penetrating the walls.—Prof. Newcomb.
- 3. A knot in a cord fastened at

(Continued on page 4.)



THE WILLAMETTE QUARTET



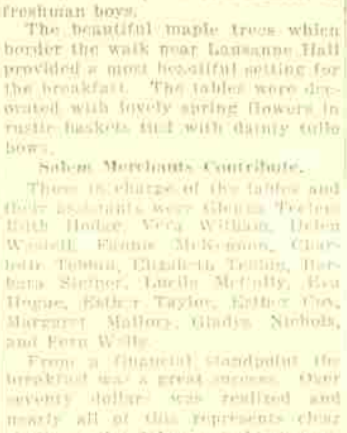
THE GLEE CLUB ENSEMBLE



THE LADIES' CLUB ENSEMBLE



THE GLEE CLUB ENSEMBLE



THE LADIES' CLUB ENSEMBLE



THE LADIES' CLUB ENSEMBLE

(Continued on page 5.)

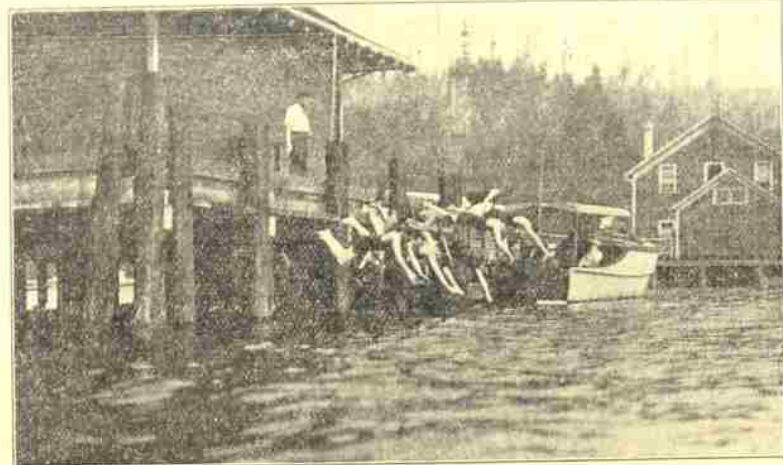
Willamette Collegian

Official Organ of the Associated Student Body of Willamette University. Founded 1889. Entered at the Postoffice at Salem, Oregon, for transmission through the mails as second class matter.

PACIFIC NORTHWEST STUDENT CONFERENCE

Some Values

- FRIENDSHIP
TRAINING
LIFE WORK
RECREATION
FUNDAMENTALS
COSMOPOLITAN



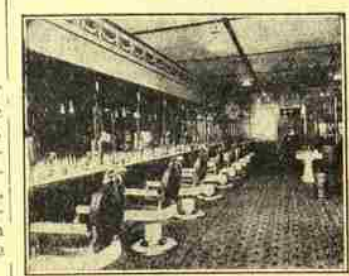
The Water's Fine at the Seabeck Dock

SEABECK ON PUGET SOUND JUNE 9-19, 1916

Some Leaders

- H. ELMER BROWN
IVAN R. RHODES
H. C. MASON
W. H. LEWIS
GOVERNOR LISTER
WM. HORACE DAY (Los Angeles)

MODEL SHAVING PARLORS



112 N. COMMERCIAL STREET
ERNEST ANDERSON, Prop.
Furniture Moving Piano Moving a Specialty
SALEM TRUCK & DRAY CO.

City Draymen and Forwarders
200 State Street Phone 74
Phone 793 1261 State St., near 12th
CITY CLEANING WORKS
Cleaners of Quality

W. H. SYKES, Barber Shop, 483 State St.

C. M. CHILDS, Proprietor, 538 State Street.

Vick Brothers, Salem's leading dealers in automobiles and auto supplies. 260 N. High St., Salem, Oregon.

KODAK FILMS, We Develop Them FREE. Experts to care for your wants.

GILL'S Third and Alder Streets, Portland, Oregon.

SOCIETY

The second recital of the pupils of Prof. Helen Miller Senn of the public speaking department and of Dr. Frank Wilbur Chance of the department of music was given in the chapel of Waller Hall Tuesday evening, May 2, at 8 o'clock.

Back to cold storage with that last year's Panama. Snow flurries and straw hats are somewhat indigestible. Willamette University is having an unusually hard time celebrating May Day this year, all on account of the weather.

Poster Prizes Are Awarded. Miss Mary Sun was awarded first prize of \$5 in the contest held at the high school for the painting of posters advertising Noyes' 'Sherwood'.

of life. In other words, the purpose of the Seabeck convention is to realize the 'Y' ideal for humanity in body, mind and spirit. 'Is the movement truly representative?' may be a question raised.

But, while emphasizing the spiritual and general atmospherical influence of the conference, the recreational antidote for a year's steady grind with general college routine should be a powerful incentive to attend.

Whether the present provisions of the Associated Student Body by-laws adequately cover all points of the best legal and technical procedure in regard to student body affairs or not, The Collegian is not definitely certain.

A landlady operating a rooming house in Ohio University is charging girls at the rate of 20 cents an hour for every hour they have callers. At present the house is unoccupied.

recently to The Collegian that steps should be taken toward the standardization of the annual Freshman Glee by taking the requirements under the sheltering wing of the student body constitution.

'HONESTY DAY.' 'Take out that old gray bonnet, with the moth balls on it, and walk it gently across the way—to the guy who owns it, and who sadly laments it, since you borrowed it from him last May.'

Remember the Glee Concert May 17. The Lawrentian. We suggest that

THE CALL OF SEABECK.

'Horizons are going to be lifted, lives purified and vitalized, habits of daily prayer and Bible study fixed, important decisions made, fresh, determined leadership added to the kingdom forces, and personalities become Christ-centered.'

Seldom, if ever, will conditions for a more successful session be found than are available this year. The ideal time, the outdoor recreation, the intensive discussions of problems of world leadership, the congenial fellowship, the contact with strong personalities and the inspirational atmosphere, these all are of timely significance to the molding of a noble Christian life.

THE SIGN POST for the traveler -- HOTEL NORTONIA Spells Athomeness--always Here one finds distinctive Comfort-- Here one meets service that anticipates-- Here is food that is savory and satisfying-- Here is atmosphere that charms and cheers-- Here is found that rare HOME LIKE element which every one loves-- These make lovely days of Nortonia stays. The thing that appeals--moderate prices. 116 off Washington 125 Stark Portland

Rain or Shine or Hot or Cold It makes no difference: you must wear CLOTHES

We have the line consisting of the Best Values for best Clothes for men and boys.

Our makes are the best UNION MEN

Remember we have the clothes with the label, anything from head to feet.

THE BEST PLACE TO TRADE IS

BRICK BROTHERS

THE HOUSE THAT GUARANTEES EVERY PURCHASE

Special Rates

from Salem to

Principal Eastern Cities

VIA

CALIFORNIA

On sale daily: June 1st to Sept. 30th, 1916 Stopovers allowed

Return limit: 90 days from date of sale not to exceed Oct. 31, 1916

'To start right is to end right'

THE SHASTA ROUTE

is the right way to start

Attractions

enroute

SEE Mt. Shasta Shasta Springs Mt. Lassen San Francisco Los Angeles Yosemite Valley Southern California Beaches Panama California Exposition

LIMITED TRAINS

on all Southern Pacific routes

Ogden Route--'The route of Limiteds.' Sunset Route--'Through Storyland.' El Paso Route--'The route of the lowest altitudes.'

Call on local agent for further information or write JOHN M. SCOTT, General Passenger Agent, Portland, Oregon

SOUTHERN PACIFIC LINES

Willamette University FOUNDED FEBRUARY 1, 1842

A Christian institution of higher learning. Located at the Capital of the State of Oregon. A beautiful campus opposite the Capital building. Buildings and equipment attractive and adequate. Faculty of highest character, preparation and teaching ability. Student body clean, able and wholesome. Scholarship high and accredited everywhere. Very inexpensive. Rich in tradition and in a large and honored alumni. Students wishing work in the College of Liberal Arts, in Law, in Theology, in Music, or in Fine Art are highly advantaged at Willamette. Closest investigation is invited. Bulletin on request.

PRES. CARL G. DONEY, SALEM, OREGON

Your Suit for Commencement or Summer Wear--Arrives This Week!

32 new patterns of snappy, domestic and imported goods with styles that appeal to the college man. No advance in prices. Suits fitted to your own person. Clothes of good wearing quality. For your own good, read in the last issue of the Saturday Evening Post, the article entitled

'YOUR NEXT WINTER SUIT'

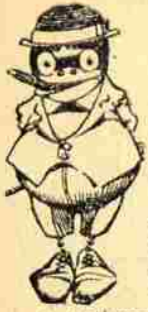
'Marked up about Five dollars by the War God'--by James H. Collins. Any information you desire concerning styles, will be cheerfully answered without any obligation to you. I will absolutely guarantee all colors.



Suits and Overcoats TO ORDER \$15.00, \$17.50, \$20, up

SEE Dr. Mosher 344 STATE ST. SALEM OREG. MERCHANT TAILOR NOW

Suits and Overcoats SALEM MADE \$22.50, \$25, \$30, up



You remember what Emerson said about the world making a pathway to a man's door if he makes the best mouse traps.

We find the grass on our front lawn much trampled down by the public asking for good furnishings, hats, shoes, etc.

And the fact that we have the best of everything in the way of men's apparel naturally causes a pathway to be worn to our door.

We like to have our front lawn trampled on. Come and do a little trampling yourself.

New spring shirts are here; beautiful styles. \$1-\$1.50-\$2 and up

HAMMOND-BISHOP CO. Leading Clothiers. "The Toggery," 107 Com'l. St.

Statesman Publishing Co. "The mark of good printing." Job Department. Printing. The Silent Salesman. You wouldn't send out an un-sent, useless or ill-dressed salesman; for the same reason don't send out any other but attractive, forceful and interest-compelling printed matter.

THE SPA Light Lunches and Confectionery Quality and Service Unexcelled Everything Home Made

The Parker Studio "The Photographer in Your Town" 304 1/2 St., over Barnes Cash Store

The University of Chicago HOME STUDY In addition to resident work, offers also instruction by correspondence. For detailed information address: U. of C. (Div. H) Chicago, Ill.

WHITE HOUSE RESTAURANT GOOD EATS—Reasonable Prices 362 State Street

The Maples The students' best eating place. Meals from 5c up. 447 Court St. Free Phone 824.

BUILDING and FINISHING MATERIALS Spaulding Logging Company

SOCIETY

By Laura Ross



Mr. and Mrs. Laban Aaron Steeves.

Although the social events which had been planned for Junior week-end were postponed because of the inclement weather, the festive spirit characteristic of May Day still remains and every one is eagerly awaiting a lovely spring day when Queen Frances will receive the scepter and be crowned Queen of the May.

Monday, May 1, Miss Florence A. Page and Mr. Laban A. Steeves were united in marriage in Ridgefield, Wash., by the Rev. J. A. Cooper, pastor of the Methodist church of that city.

Miss Junia Todd presided at lunch Sunday evening inviting as guests, Miss Leila Lent, Miss Dillard of Roseburg, Mrs. Minerva Todd and Mr. Eric Bolt.

Miss Sylvia Jones of Gervais spent Friday and Saturday as the guest of her sister at Lausanne Hall.

In response to the call, "Webster" an elaborate banquet was held April twenty-eighth in the First Congregational church parlors and was attended by Websterians from far and near, who were invited by the local society members to the third annual reunion.

Miss Marie Wells who was a member of the '15 class while a freshman at Willamette has received the honor of being elected Queen of the May at Pacific University.

Saturday evening Mrs. C. C. Emmel and Mrs. Frederick Thompson were dinner guests at the Dewdrop.

Miss Leila Lent, who was the charming queen of the May last year was a guest during the week-end, of Miss Edith Lornston at Lausanne Hall, of Miss Valeria Goldberger at Roselawn and of Miss Grace Thompson at her home.

Honoring her guest, Miss Irene Johnson of the Lincoln high school of Portland, Miss Lucile McCully invited a few friends to dinner Sunday, Miss Johnson was later accompanied as far as Woodburn by the merry party including Miss Erma Davenport, Miss Evelyn Cathey, Miss Lucile McCully, Mr. Leland Austin, Mr. Russell Hall and Mr. Paul Miller.

Miss Leta Metcalf of O. A. C. visited Miss Glenna Teeters during the week-end.

Wednesday noon the N. M. Club met on the banks of a nearby stream, as guests of an honorary member. The spot, shaded by overhanging boughs of maple and sweet brier gave the lunch of spring. There a dainty lunch was partaken of and greatly enjoyed by the hungry crowd.

short business meeting was held and a white ribbon was chosen as the official insignia of the club. Saturday evening a formal reception to the new members was held at the home of the secretary.

Miss Gertrude Dillard of Roseburg was a guest at Lausanne Hall during Junior week-end. She will be a member of next year's Freshman class.

A crowd of Portland visitors motored up for the May festivities Friday. They included the Misses Mildred Bartholomew, Ione Lewis, Edith Lewis, and Mr. Philip Bartholomew.

Of special interest on the Glee Club concert program in the First Methodist church Wednesday evening, May 17, will be the appearance of Miss Faye Janette Bolin, who will play Liszt's "Waldesrauschen" as a piano solo number.

As accompanist for the Ladies' Club and as an advanced pupil under Dr. Frank Wilbur Chase of the department of music, Miss Bolin is playing with a winning brilliancy which never fails to please. She gave "Polka de Concert" by Homer Newton Bartlett as a preliminary to the recent debate with Pacific university and also appeared in the combined musical and oratorical recital in Waller chapel last Tuesday night.

Guests at Roselawn during Junior week-end were: Miss Irene Eddy of McMinnville, Mrs. Mark of Sheridan and Miss Lucile Sturgiss of Vancouver.

A large number of Newberg visitors motored to Salem Friday to attend the crowning ceremonies. Among these were Mr. and Mrs. C. H. Nichols, Harold Nichols, Chester Zumwalt, Milton Kienle, Eleanor Warner and Marjorie Hazelton.

The Junior play is never complete without the Queen of the May. Friday evening Queen Frances I appeared in her court costume and with her maids, the master of ceremonies, Mr. James Crawford, and "Lord High Chancellor," Mr. Paul R. Smith occupied the stage.



QUEEN LEILA I. Who was here to assist in the coronation ceremonies of Frances I.

Miss Myrtle Albright, ex-'18, is visiting at Lausanne Hall this week. Mr. Charles Hall has been welcomed on the campus by his many Willamette friends. As a member of the famous 1916 class he became prominent in college life. For two years he has attended the University of California and was this spring graduated.

You Young Fellows You who have athletic inclinations, you who like lightness and freedom of action—"refined jauntness"—you should see our new "Sport" Shirts Long or elbow sleeves, plain or fancy colored collars and pocket tabs—beauties and lots of them 60c to \$1.50. Barnes' Cash Store

SALEM BAKERY G. A. BACK & CO. Phone 208. Evans Baggage Transfer. SALEM'S ROYAL BAKERY FRESH BAKERY GOODS WE AIM TO PLEASE OUR CUSTOMERS Phone 378 240 S. Commercial

GEO. C. WILL All Late Sheet Music and Piano Studies. :: Pianos and Sewing Machines Rented 432 STATE STREET PHONE 159

Photographs of Quality Tom Cronise We Aim to Please

CROCKERY GLASS SILVERWARE KITCHENWARE CUT GLASS COFFEE TEA SPICES THE STORE OF HOUSEWARES 135 N. Liberty Wm. Gahlsdorf Telephone 67

SEE OUR LINE OF BOX PAPERS 25c and Up THE Commercial Book Store

ROTH GROCERY CO. CITY AGENTS Fisher's Cut and Blend Flour Golden Gate Coffee Antonini Olive Oil

THE PRICE SHOE COMPANY LEADERS IN FINE FOOTWEAR 326 State St., Next to Ladd & Bush WE'VE been with you for the last five years. Here We Are Again Ray L. Farmer Hardware Co. Everything in Hardware COURT and COMMERCIAL STREETS

PROFESSIONAL CARDS Dr. C. B. O'Neill Optometrist Ophician Bush Bank Bldg. Phone 625

J. O. VanWinkle, M.D. JEFFERSON, OREGON Telephone 232

DR. O. A. OLSON DENTIST DR. R. T. McINTIRE PHYSICIAN AND SURGEON 212-14 Masonic Bldg., Phone 440

SALEM BAKERY G. A. BACK & CO. Phone 208. Evans Baggage Transfer.

SALEM'S ROYAL BAKERY FRESH BAKERY GOODS WE AIM TO PLEASE OUR CUSTOMERS Phone 378 240 S. Commercial

GEO. C. WILL All Late Sheet Music and Piano Studies. :: Pianos and Sewing Machines Rented 432 STATE STREET PHONE 159

Photographs of Quality Tom Cronise We Aim to Please

CROCKERY GLASS SILVERWARE KITCHENWARE CUT GLASS COFFEE TEA SPICES THE STORE OF HOUSEWARES 135 N. Liberty Wm. Gahlsdorf Telephone 67

SEE OUR LINE OF BOX PAPERS 25c and Up THE Commercial Book Store

BLACK SHOES BRONZED WHITE SHOES CLEANED Popular Shoe Shining Parlors: 383 State Street, opposite The Spa

THE PRICE SHOE COMPANY LEADERS IN FINE FOOTWEAR 326 State St., Next to Ladd & Bush WE'VE been with you for the last five years. Here We Are Again Ray L. Farmer Hardware Co. Everything in Hardware COURT and COMMERCIAL STREETS

GARDNER & KEENE WATCHES DIAMONDS, JEWELRY FINE WATCH REPAIRING Eyes Tested : Lens Grinding

We do quick shoe repairing and do it well. A. J. Paris Shoe Shop "Home of the Tilt Shoe" 379 State Street, Opp. The Spa

Salem Bank of Commerce Corner State and Liberty

DR. F. L. UTTER DENTIST Special attention to Oral Hygiene and Diseases of the Gums SALEM, OREGON

DR. O. L. SCOTT, D. C. Chiropractic Spinologist Palmer School Graduate 1911 Rooms 406-7-8 U. S. Nat'l Bank Bldg. Res. Phone 328 R. SALEM, OREGON

DR. C. HARTLEY PYORRHEA SPECIALIST 416-17 U. S. National Bank Bldg. Phone 186, Salem, Or.

FRANK S. WARD DRUGGIST 548 STATE ST. SALEM, OREGON PHONE 2247

HOTEL SEWARD Alder at Tenth St. PORTLAND, OREGON The patronage of the students and faculty of Willamette University and their friends would be appreciated. The Seward is one of the most modern and homelike hotels in Portland. RATES \$1.00 and Up. All Oregon Electric trains stop at the Seward. W. M. SEWARD, Manager.

When you need medicine or toilet articles see

MAUD COX STUDIO Photographs HUBBARD BUILDING

BIN SIN CHOP SUEY, NOODLES, and RICE AND PORK Lowest Prices and Best Chinese Dishes 416 Ferry Street

H. D. MITCHELL Students' Barber : 1266 State St.

The Greatest and Best Wallulah Willamette has ever published is now ready for distribution. Real grain leather binding, best enameled paper, excellent cuts, thirty pages of new snapshots, many unique and attractive features. Price \$2.50 Get your copy at the Varsity Book Store. If you wish a copy mailed to you send \$2.60 to the manager. K. A. CHAPLER, Bus. Mgr.

QUALITY WORK

Don't be satisfied with anything but the best. If you will examine our

Shirt, Collar and Cuff Work

You will surely stop white wagons or phone Main 25 and give us your laundry.

All goods laundered in our establishment are washed and made absolutely sanitary by the use of a Harmless, Oxygen-Cleanser which does its work like the rays of the sun.

You can also send any kind of wash, with the feeling that it will be returned to you in the best condition and that it will wear as long as when it was done at home.

SALEM STEAM LAUNDRY

186 South Liberty St. Phone 25

"OLDEST, LARGEST, BEST"

The Store that Saves You Money

Go-Carts and Sulkies



Spring Time demands that you take baby out. If you have a Fulton or Fultonette you will enjoy your trip.

The Fulton Go-Cart as a collapsible cannot be duplicated for simplicity. Just the thing for that auto trip.

See them on display in our West window.



Successors to Calif Bros.

TRY THE MODERN CONFECTIONERY'S FANCY CHOCOLATES

CHOCOLATE DROPS, CARAMELS, WALNUT TOPS, and our new feature candy, the WHITE CHOCOLATE. Very Highest Quality—Fresh, Delicious, Wholesome.

For sale at

VARSAITY STORE
AND ALL CITY CONFECTIONERS

SHOE REPAIRING

THE WAY YOU WANT IT—WHEN YOU WANT IT

Ye BOOT SHOP

325 State Street, Opposite Bush's Bank

NEW PRESIDENT OUTLINES WORK

Six Sterling Planks to be Found in Platform.

"Y" Efficiency Destined to Keep Association Work on the First Battle Line Next Year—Extension Work to Be Greatly Broadened.

If the scheduled "Y" program is a true criterion of association work next year, it is indeed safe to predict a banner year. Under the direction of President Randall plans have been formally launched for greater efficiency and broader extension work than has been attempted heretofore. Those coming in contact with the presidential enthusiasm feel assured that the new administration means business from the word "go." Of vital significance is the cabinet plan of broader co-operation with the Y. W. C. A. in extension and social affairs.

Platform Has Six Planks.

According to the program, the six planks comprising the executive platform for next year are:

1. A new system of Bible study and devotional meetings to be held in all probability on a week-day.
2. A larger and more energetic extension of outside work among the Chemawa Indians, the inmates of the penitentiary and other state institutions than has been carried on at Chemawa alone this year.
3. A better and worthier chapel program on Thursday, Association day.
4. A more active and personal interest in "Y" affairs for a larger number of students.
5. Aid in every line of work parallel to the "Y" where it will be practical—as Sunday School teachers and Epworth League workers.
6. Deputation work for the holidays.

New Cabinet Is Efficient.

Assisting the new "Y" crew will be Vice-President Raymond Attebery, who will have charge of the devotional side of "Y" life. Wesley Hammond, as secretary, will be manager of the handbook and tend to the membership. Louis Stewart, Robert Maulden, and Arnold Gralapp are listed to direct financial, extension, and social activities respectively. Such a live army of assistants lined up will undoubtedly make "Y" efficiency a monumental byword on the campus next year.

"Green Stockings" Is Success.

"Green Stockings," the play which the seniors of Salem high school staged April 25, was one of the best amateur plays seen in Salem. The high school auditorium which is well equipped for anything of this kind, was crowded to the doors.

It is rumored that 413 students flunked freshman chemistry at the University of Illinois.—Ex.

WOMEN HARK TO SEABECK PLANS

Departure of "Y" Is Signal for Co-ed Invasion.

Spirit of Conference Makes for Best Many Great Speakers to Address Delegates—Outdoor Recreation to Be Bright Feature.

Shortly after the "Y" conference has adjourned from Seabeck, the Y. W. conference will begin at the same place from June 23 to July 2. Many prominent men and women will be there as leaders, among whom are Miss Katy Boyd George, Metropolitan Student Secretary of Boston; Miss Elizabeth Fox, General Secretary of Bellingham; Rev. Hugh G. Ross of Seattle; Rev. Frank Dyer of Tacoma, and Miss Mary Gillies from the U. of O.

Assembly to Start Day.

The day will begin with a short assembly, after which classes in Bible Study will be held. Other classes arranged to take up special topics are also planned. Addresses, council hours, vesper services, all unite to help to uplift and to inspire. The spirit of a conference is well told in the March number of "The Association Monthly" in an article entitled, "A Day at Seabeck."

Two evenings, besides all the afternoons, are devoted to recreation and fun. There will be picnics, basketball games, tennis tournaments, water sports, and hikes into the green woods, and down the "fast disappearing pioneer roads." Mount Olympus towers opposite the hotel.

Loan Provisions Made.

Former delegates can testify to the new life and courage gained from such a conference. Two years ago seven Willamette girls went, and came back "made over." Miss Leila Lent, last year's May Queen, said, "I consider going a part of college life."

Provisions for loans to give delegates is made by the Willamette Y. W. Association, and the committee in charge is anxious that every girl seriously consider going.

A special program is to be given tomorrow in the rest room, when former conference delegates will tell of their experiences at Seabeck last summer.

JUNIORS STAGE

(Continued from Page 1.)

mond Gilbert achieved an unqualified success. For a girl of Miss Gilbert's quiet nature, to play the dramatic parts in which venery, love, despair, and revenge are mixed in liberal quantities was no small task, but her work was of such a quality that one could not help wishing the queen all the good fortune in her appearance in the royal robes she was regal.

A very intended Miss Irma Botsford, who played three distinct characters. She appeared with delightful ingenuity, grace, laughter, and naturalness as Puck; then, in Scotch costume, as Arthur Plantagenet; and also as a novice in a nursery.

Her best scene was as Puck with Shadow-of-a-Leaf, when her laughter was so infectious it brought quick response from the entire audience. Who could resist such a laugh? Then, she was good as Arthur Plantagenet, too, and did the part of the novice with ability.

Of two other young women who took prominent roles, Emma Minton and Carrie Cooksey, the latter played two parts—Widow Scarlet and the Princess of Kirkcubbin. In both these characters, Miss Cooksey gave creditable presentation, although there was more color to her part as Widow Scarlet. Miss Minton was consistent and natural as Jenny, maid to Marjorie.

Men Make Characters Live.

Among the men-folks of this story of long ago, we find many of historic note. For truthfulness in the portrayal of character, Laban Steeves as "Shadow-of-a-Leaf," a Fool, deserves the laurel wreath, although Earl Fiegel as Robin Hood, Wallace Adams as Prince John, and Carl Reetz as Fitzwalter follow him closely. They are to be credited with doing their parts justice and in making the character of the Fool well and more than that, no actor can do.

Steeves Impersonates Fool.

The part of Robin Hood demanded a vital personality and Fiegel fitted it well. He was earnest and caught some of the indomitable spirit of the illustrious Robin. Steeves got into the character of the Fool well and made a lasting impression with the nobility of his sacrifice. By voice and action he conveyed the simplicity of the Fool's nature, and his love for the wild things.

Clad in white, Wallace MacMurray, as "Diamond," King Richard's minstrel, appeared at moments of dramatic intensity and his clear tenor voice lent an atmosphere of weirdness

EXIT BASEBALL ENTER PIGSKIN

Good Old Wallows Are Uncovered in Dope.

Sprinkles and Downpours Force Y Scribes to Return to Gridiron Game—Multnomah to Be Played November 25.

Jupiter Pluvius, rain god and enemy of baseball, track and tennis, roused supreme last week-end and conditioned Sweetland Field for excellence for football. Therefore ye sporting scribe's thoughts wandered to the gridiron sport and things of great promise for the 1916 fall campaign came to light.

In the first place, all the men of last year's squad with one exception, are in school at present and are planning upon returning. Clinton Archibald, premier halfback, is out of school and may not be able to return next fall.

"Shi" to Be Graduated.

Shieler is the only man lost through the graduating route. From the veterans returning, the second string team, and the influx of prep stars a strong team seems possible.

The schedule as outlined is a heavy one. The annual Alumni game will occur in the latter part of September and will be followed by the Oregon game at Eugene October 7. P. U. will probably be met on the local field November 18, and Multnomah will form the opposition November 25 at Portland. The College of Puget Sound may be met in Tacoma and dates will be secured with Albany and Mt. Angel Colleges, and Chemawa. The Tacoma trip is an inducement for every man in school to try for the team.

Practice will start on the local field September 1.

to the scenes. His portrayal of the character of the minstrel or troubadour was excellent. In addition to directing the play and taking the part of Blondel, Professor MacMurray wrote the music for the verses. In this direction, Professor shows himself to be a master artist, endowed with a rare creative gift. His music had charm and sweetness and enhanced the beauty of the words of the verses.

Willis Bartlett as "Little John," put ginger into the action when he appeared. He impressed one as being no "Little John" in the play. Stanley Van Winkle fitted to a tee-winkle the character of Friar Tuck, who didn't have much to say but whose presence was impressive from its reticence. One could imagine the good friar spending most of his time in the cellar close beside a keg of stout ale. Nevertheless, he was good.

Not in any way to be overlooked are Oberon, King of the Fairies, and his Queen, Titania, Alpheus Gillette and Esther Emmel. It did not take much to transfer Miss Emmel from the mundane world to fairy-land. Both parts were creditably performed and added charm and atmosphere to the production.

Schramm Gives Vocal Solo.

Alfred Schramm, who has been in college theatricals for a long, long time, appeared as Alan-A-Dale, sweet tenor singer. He favored the company with a delightful tenor solo. Karl Chapler as "The Sheriff of Nottingham," took the imposing part with dignity, in spite of the fact that his saber dated from Civil War times. Herbert Tasto presented the character of Will Scarlet satisfactorily.

Credit must be given to the costume committee for the fidelity to period of the costumes. The impression created in this respect was very satisfying.

The dances were under the direction of Helen Westall and were pretty and pleasing. The large ballet was capably handled.

The following are the minor characters, whose costuming and acting lent the necessary atmosphere for the success of the production:

Fairies and an Alan-A-Dale, sweet tenor singer. Evelyn Cathey, Esther Cox, Lola Cooksey, Gertrude Cunningham, Lila Doughty, Margaret Garrison, Ruth Green, Lela McCaddam, Lucile McCully, Lyra Miles, Eugenia McInturff, Olive Roscoe, Ruth Spoor, Mildred Wiggin, Fay Wolfe, Helen Wood, Raymond Attebery, Allan Jones, Louise Stewart, Harvey Wilson, Paul Green, Irma Botsford, Esther Taylor, and Bert Ford.

Robin Hood's Men—Richard Aylson, Raymond Archibald, Bert Ford, Harold Miller.

Prince John's Men—Leland Austin, Tinkham Gilbert, Athill Irvine, Harold Tobie.

Serfs—Harvey Wilson, Aetna Emmel, Sam King, Arnold Gralapp, Gladys Carson, Edna Billings, Leigh Douglas, Addie Tobie, Flora Housel, Raymond Attebery, Peasants, Courtiers, Retainers, Etc.

NOW YOU KNOW

(Continued from page 1.)

both ends can be untied without disturbing the ends.

4. A right glove turned over becomes a left glove, a left shoe becomes a right shoe.

5. A right glove turned inside out in our space becomes a left glove, but if turned inside out in a fourth dimension space, it remains a right glove. The thumb and fingers do not come through the wrists, but every particle is passed through that mysterious fourth dimension.

I Am a Space Being.

"Put me in a closed box, I cannot get out, for I am a three dimensional space being. I can move in an infinite number of directions from any point in the box, but any movement I make is equally toward my prison walls. To get out I must move in some direction that is not in the box, that is away from all the walls, that is in the fourth dimension, that is I must move into the abstractions, enveloping the fourth dimensional space."

Force of Habit.

Castle tealling for "Sherwood" seats!—Please save me three in the seventh row and be sure they're fresh.



"Varsity 55"

Is the model suit for young men. This model will be worn by more young men this season than any other style made. You may be interested to see how it would look on you.

PRICES \$15 to \$25

Salem Woolen Mills Store

CHAUNCEY BISHOP Manager

TENNIS SUPPLIES

WE ARE PAYING PARTICULAR ATTENTION TO THIS DEPARTMENT—SEE WINDOW DISPLAY

- SPAULDING BALLS and RACKETS
- WRIGHT & DITSON BALLS and RACKETS
- GOODRICH BALL and MARKERS
- NETS
- SCORE CARDS
- RACKETS RESTRING
- POSTS / SHOES

HAUSER BROS. 372 STATE STREET

Townsend Creamery Co.

All kinds of creamery products at reasonable prices. 137 S. Com'l St., Phone 195

KARL NEUGEBAUER

JEWELER Expert Watch, Clock and Jewelry Repairing Masonic Temple

HANG ON!

Don't let go of the fact that you get honest value and comfort in suits made by me individually for you. Won't you come in and let me prove it to you.

John Sundin Suits Tailor 370 1/2 State St., Room 1, Phone 283

JITNEY CLUB

We're open all night and day. Big cats for a nickel. Try us. 429 Court Street.

Barr's Jewelry Store

Diamonds, Watches, Jewelry We give special attention to watch and jewelry repairing. We carry a complete line of the Conklin Celebrated Self-Filling Fountain Pens.

BARR'S JEWELRY STORE Cor. State and Liberty, Salem

Students of Willamette University have banked with

Ladd & Bush

For forty years

TRY A GRAY BELLE NOON LUNCH

11:30 to 2:00

Day Phone 13 Night Phone 1531

Automobiles and Auto Trucks Also General Draying and Baggage Transfer

Kapphahn Transfer Co. HUBBARD BUILDING

The Electric

Billiard Parlor and Bowling Alleys

Cigars, Tobacco and Soft Drinks

OTTO A. KLETT PROPRIETOR

475 State Street Salem, Oregon

Queen Quality SHOES

FULLERTON'S

270 North Commercial Street.

Percy M. Varney

If elected I will endeavor to conduct the business of the office in the same straightforward and impartial manner as I have my duties of the past as an officer.

Republican Candidate for CONSTABLE SALEM DISTRICT Primaries May 19

A.C.Nelson, A.B.Nelson, E.S.Patton Repair Work Promptly Attended to

Nelson Bros. & Patton PLUMBING Tinning and Warm Air Furnaces Phone 1206 355 Chemeketa St.

Removal Sale!

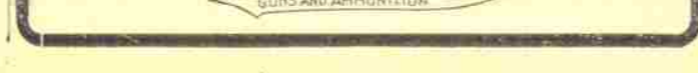
We will move on May 22d to 126-132 So. Commercial St. South of Ladd & Bush Bank.

Special Prices on

- BASEBALL SUPPLIES
- TENNIS GOODS
- WEATHERS
- FISHING TACKLE
- CUTLERY
- BICYCLES

After May 22d at 126-132 So. Commercial St.

Sale at Old Store Only. 219 North Com'l St.



ESTES & ZUEHLKE

LOCAL TAILORS Alterations and Repairing 128 S. Liberty St., Phone 498

THE GLOBE BARBER SHOP

LEE CANFIELD, Prop. BASEMENT OF HUBBARD BUILDING Corner State and High, Salem, Oregon. Baths in Connection.