



PRESENTING . . .

The Big Top

THE 59th ANNUAL . . .

FRESHMAN
GLEE

of

WILLAMETTE UNIVERSITY

Which is now in its 125th year.

Salem, Oregon

MARCH 4th, 1967

Presented by . . .

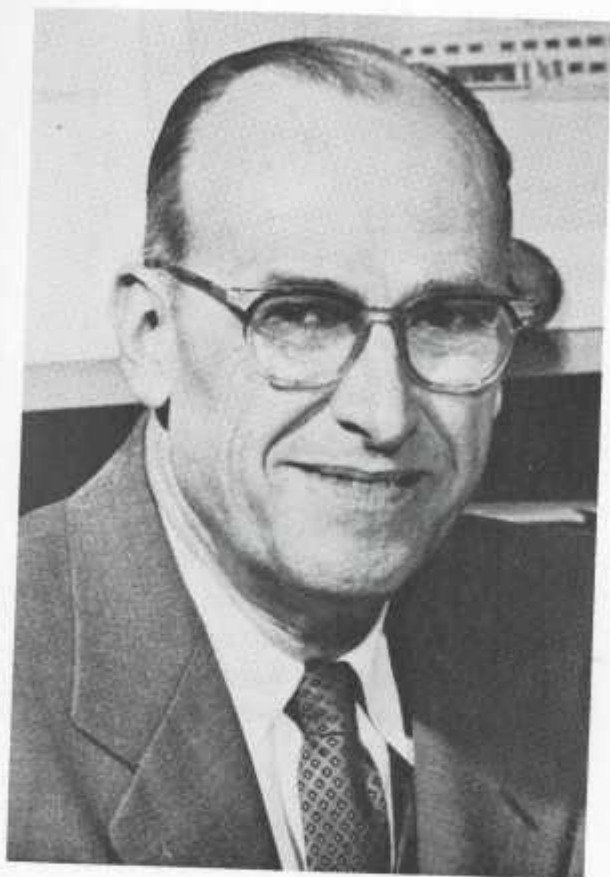
THE CLASS OF 1970

Glee Manager **BILL BENNETT**

Assistant Glee Manager . . . **ED MILLER**

Recording Secretary **NANCY STEVENS**

DEDICATED TO . . .



G. HERBERT SMITH, presently in his 25th year as president of Willamette University. This year's Freshman Class will have the honor of being the last class to graduate under President Smith, as he will be retiring in 1970 after many years of devoted service to the University.

THE RINGMASTER SPEAKS . . .

For the past 58 years Willamette Students have participated in a phenomenon known as Freshman Glee. No other college in the nation holds such an event. Glee, over the years, has meant many things to many people, but perhaps the most significant has been the tremendous spirit exhibited by the participants. It is with this spirit in mind that I welcome you to the 59th Annual Freshman Glee. The theme for this year is **NOVELTY**, and it is our hope that this will be a novel and merry experience for all.

To those who win, I offer my congratulations. To those who lose, I thank you for a job well done. To all, we, who have worked to make this year's Glee a reality, hope that this will be a night you will cherish for years to come.

BILL BENNETT,
Freshman Glee Manager

THAT WHICH WILL OCCUR . . .

FRESHMAN CLASS PRESIDENT'S ADDRESS:

. . . **Kerry McClelland**

GLEE MANAGER'S ADDRESS:

. . . **Bill Bennett**

"TAKE US BACK TO THE GOOD OLD DAYS"

. . . **SENIOR CLASS**

"A SONG OF YOUTH"

. . . **JUNIOR CLASS**

"FACTORY"

. . . **SOPHOMORE CLASS**

"OUR BELOVED SCHOOL"

. . . **FRESHMAN CLASS**

ENTERTAINMENT

JUDGES' DECISION AND PRESENTATION

Everyone is cordially invited to attend a reception to be held in Matthews Hall following tonight's program.

JUDGING STANDARDS . . .

WORDS AND MUSIC . . .

Judged together by three judges, each rating the four classes according to first, second, third and fourth.

VOCAL RENDITION . . .

Four judges will consider tone quality, diction, and expression. Each judge will rate the four classes according to first, second, third and fourth.

FORMATION . . .

Three judges will each rate the four classes according to first, second, third and fourth.

Points will be assigned after judging is completed.

WORDS AND MUSIC . . .

First place	5 points	Third place	3 points
Second place	4 points	Fourth place	2 points

VOCAL RENDITION AND FORMATION . . .

First Place	10 points	Third place	6 points
Second place	8 points	Fourth place	4 points

Thus, a total of ten judges will be used, and a possible 85 points is attainable.

Senior Song . . .

Formation JOHN ERICKSON

Song DAVE WELCH, JOE EDING

"TAKE US BACK TO THE GOOD OLD DAYS"

VERSE:

Parents often try to tell us they were young once too.
But they don't seem to realize we know
what they could do.

So now on their behalf, we shall dedicate this song,
And hope that they are willing to agree and
come along.—

CHORUS:

TAKE US BACK TO THOSE GOOD OLD DAYS—the
Roaring Twenties

Raccoon coats, skirts to the thighs (sigh)
Prohibition put you in a "tight" position.
Five-foot-two and those blue eyes that made you
Make advances, takin' chances
Doin' the Charleston all the night and day-time.
Frills and laces, silent flicks and powdered faces
Grab your gal and give a hand to the man in the
dixieland band.

(VAMP)

Marquees blazing, brightly, nightly people gazing
Up and down the avenue.

Jolson's mammy's swingin' in from Alabama.

TAKE US BACK TO—

THOSE GOOD OLD DAYS of booze and blues,
"Ink-a-dink-a-dink-a-doo"

And Theda Bara's hair-a-too—

Back to the "Twenty-three skiddoo" (boop-ee-doo-bahl)

Junior Song . . .

Formation _____ DENNY COLE

Song _____ GINNI HAWKINS

"A SONG OF YOUTH"

We're on our way to the highest points of our lives. . .

Between now and then we know we don't have
much time . . .

From each day we're living we're getting the most
that we can.

You must be a child before you can be a man.

A Song of Youth!

Our souls and minds are young and pure and free . . .

But this is not for eternity.

For with the seasons and with the onslaught of years,

Will come the heartaches, the sorrows, and the tears.

Our lives are short and each year has its dream.

And in our year our minds will just float downstream.

Our laughter and smiles are not really such a crime.

Growth will come with time.

A Song of Youth!

Sophomore Song . . .

Formation _____ DON SOLBERG

Song _____ BILL GAYNOR

"FACTORY"

SPOKEN: Cruel, Drunken, Suntanned, Society

SUNG:

Welcome to the Factory
Manufacturing misfits
Diseased of the soul, falling
Clawing at each branch, fighting
Searching for self, deeply
Calling for help, in vain
Supposed saviours, screaming how
If you are there, light of lights,
Shine on this palsied soul
And why allow such darkness, why oh why,
Why is a desert
Continually tantalizing
with the mirage of revelation
Diseased of the soul, falling
Clawing at each branch, fighting
searching for self, deeply
Calling for help, in vain.

Freshman Song . . .

Formation JON HAYNER

Song DOUG FORSYTH

"OUR BELOVED SCHOOL"

In eighteen hundred and forty-two, there was a man
named Lee,
And he founded a University,
He tutored the Indians and taught them how to read,
And they paid for tuition with their beads.
He worked and he slaved for he really loved that school,
But everyone who saw him thought for sure he was
a fool,
His school was a huge success and one of great repute,
And lies about his school he would quickly refute,
And through his noble efforts came the Oregon Institute,
And then came Waller Hall and boy was it a beaut.
They built it out of bricks of clay,
The clay it baked at school all day,
And still the Hall is standing there today.

But that was a hundred and twenty-five years ago
I guess,
And the school now is really quite a mess,
The kids have their own ideas and think they are
the best,
And when they don't get their way, protest.
They gripe about the saga food but know they
really love it,
They say they want more social life,
But know there's too much of it.
The boys are at one end of the school,
The girls are at the other,
We think this really quite absurd,
They could not hurt each other,
But when the boys are with the girls
the higher ups do shudder,
It seems evident they're trying to prevent some
unthought-of event.
Then they have their Freshman Glee,
With songs that are sung bunglingly,
And that is all this song should really be.

Whatever is true about this school we really could
no say,
But if **YOU** can, then that is quite OKay,
And if the plan is not exactly what the people say,
It's far too late to remedy the kind of college quality,
And so the students are stuck, then, yet today.

OUR ILLUSTRIOUS RINGLEADERS . . .

Programs . . .	CINDY IRVINE KEN PETERSEN
Tickets . . .	BOB WATKINS SUE DILLOW
Souvenir Edition . . .	RICHARD POLLEY MARCIA KELLEY
Lighting . . .	BOB SWANSON
Ushers . . .	LINDA SHARPE
Stage and Floor . . .	JIM BARBER PETE GEORGE
Recording . . .	GRANT SHARP KATHY WELCH
Photographers . . .	PAT CAMPBELL BOB JONES
Entertainment . . .	TED FRITTS LESLIE PETERSEN
Banquet Committee . . .	PATTIE CHASE TOM GILBERT
Publicity . . .	BILL HOWE MARGARET JENSEN
Decorations . . .	ROBIN WHITTLE MOLLY HOLSAPPLE
Backdrop . . .	SUE CARLSON TED SHARPE

These committee heads are deeply indebted to the many committee members who so willingly gave their time and effort. A special thanks to each of these people.

* * * * *

Glee Souvenir Edition is now on sale for 50c



ZALES
JEWELLERS

AMERICAS - LARGEST - DIAMOND - MERCHANT
SALEM PLAZA, SALEM, OREGON

The Kopper Kitchen Restaurants

COMPLIMENTS TO WILLAMETTE STUDENTS

ALWAYS GOOD FOOD

OPEN FOR BREAKFAST, LUNCH, DINNER AND SNACKS

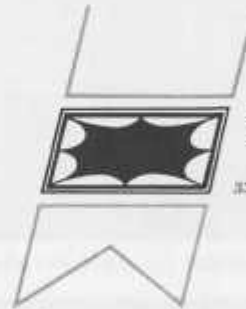
3500 Portland Rd. N. Open 24 hours

377 Court St. 6:30 a.m. to 12 midnight



325 LIBERTY ST. S.E.
SALEM, OREGON 97301

Phone: 581-1518
Area Code 503

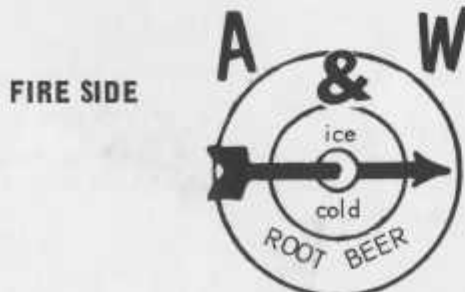


**FIRST FEDERAL SAVINGS &
LOAN ASSOCIATION OF SALEM**

333 High Street N.E. / Salem, Oregon - 97301

Congratulations

FROM



ON ANOTHER SUCCESSFUL
FRESHMAN GLEE

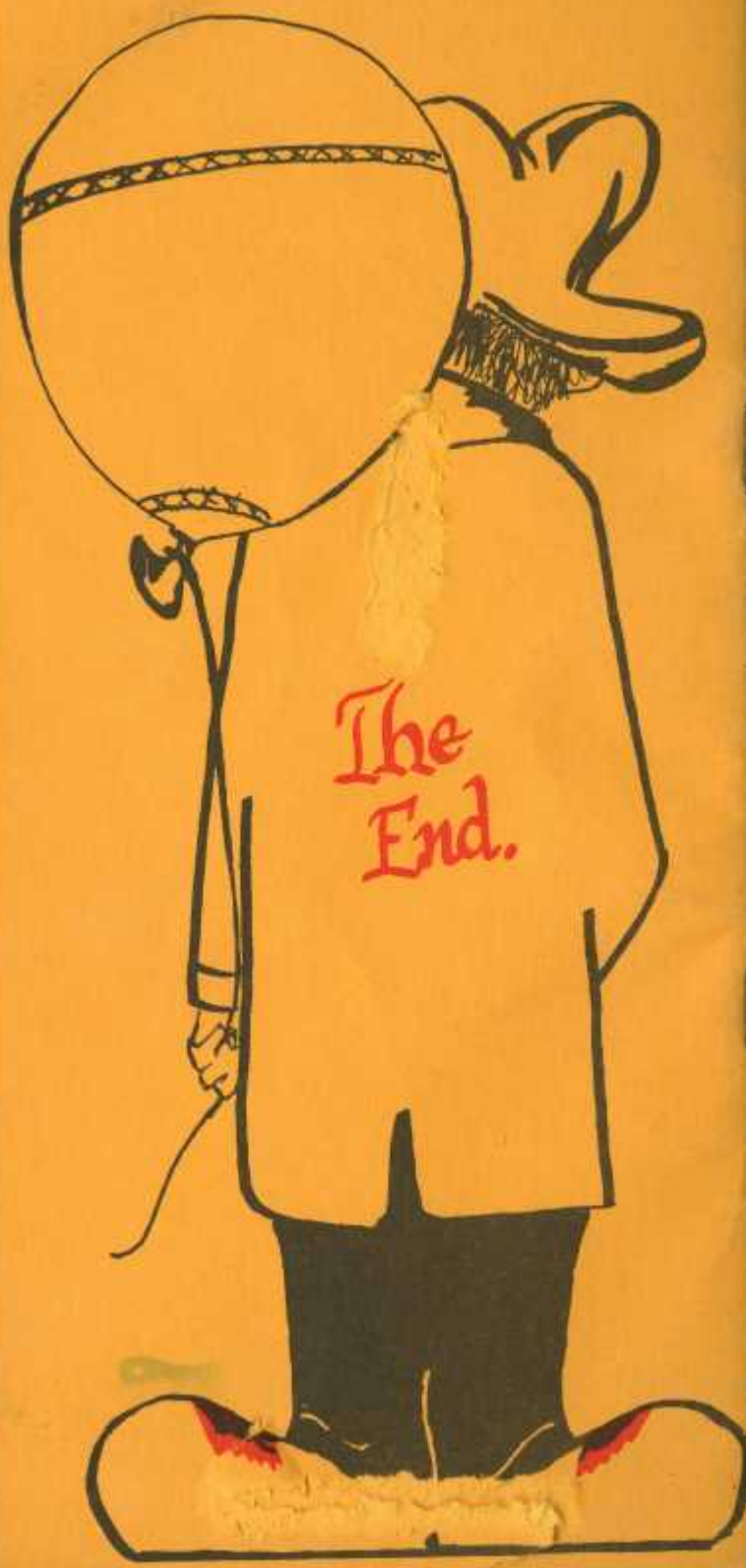
WILLS MUSIC STORE

COMPLETE MUSIC STORE

SHEET MUSIC - STEREO - RECORDS
PIANOS - BAND and ORCHESTRA
INSTRUMENTS - CLASSIC GUITARS

432 State St.
SALEM, OREGON
Ph: 364-6757

S&H STAMPS



The
End.