

*Willamette*

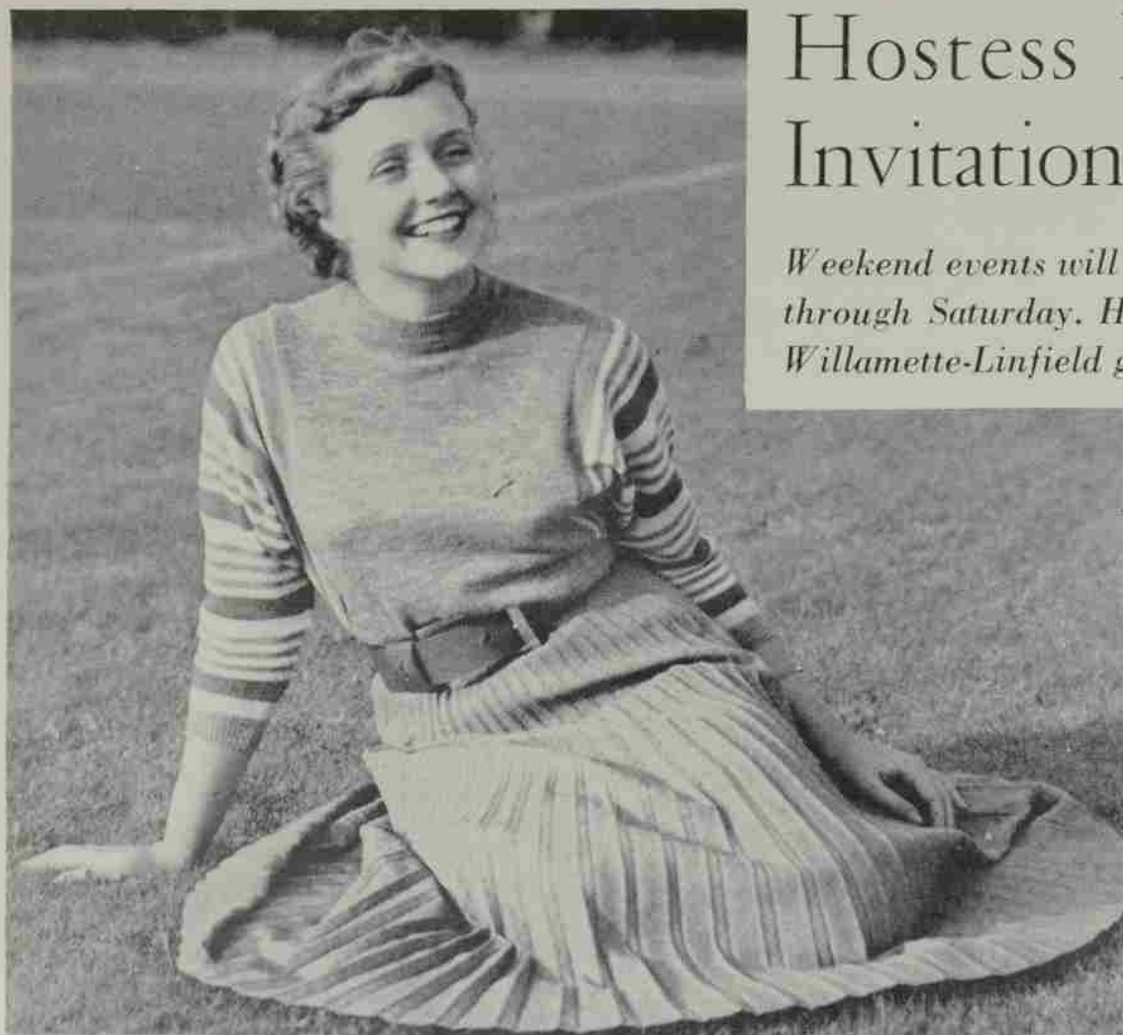
**ALUMNUS**

*October 1952*



**HOMECOMING  
NOVEMBER 8**

**TED OGDahl  
SPEC KEENE**



Pretty blond Carolyn Crane, junior from Portland, was elected Miss Homecoming Hostess for 1952 by general student body vote this month. As the second Homecoming hostess, she will be on hand to greet alumni at the many activities scheduled on Friday and Saturday, November 7, 8.

## Hostess Extends Special Invitation to Homecoming

*Weekend events will begin Friday at 5 A. M. and continue through Saturday. Highlight of Homecoming will be the Willamette-Linfield game at McCulloch, 2 P. M., Saturday.*

The 1952 Homecoming Weekend, honoring Spec Keene and his boys, will officially commence Friday morning, November 7, as freshmen take rake in hand and scour the campus floor.

Innovation in student enterprise this year will be the Torchlight Parade, scheduled for 7 o'clock Friday evening. The new feature replaces the Noise Parade of former years. A bonfire rally will be held at McCulloch field, immediately following the Friday night parade through downtown Salem.

Registration for alums begins Saturday morning at 10 a.m. in Lausanne Hall. The pre-luncheon get-together is slated for 11 a.m. at the Marion Hotel, with the alumni luncheon in the Mirror Room of the Marion to start at 11:30 a.m. The early hour for luncheon has been set so alumni will have plenty of time to arrive at McCulloch stadium for the kick-off between Willamette and Linfield at 2 p.m.

Game half-time ceremonies, honoring Spec Keene and his boys, will be in charge of Bruce Williams. A special seating section for Spec Keene lettermen and their wives has been set aside.

A post-game coffee hour, immediately following the game, will be held in the lounge at Lausanne Hall. Final event on Saturday's calendar will be the annual Homecoming dance at 9 p.m. in the gym. The dance will be semi-formal.

### Arpke Elected Puget Sound Alumni President

Fred Arpke, '26, was elected president of the Puget Sound Alumni chapter on September 14 at the group's annual picnic. Approximately 80 were in attendance for the outing at Lake Wilderness.

Other officers who will serve during 1952-53 are Bill Lemon, '44, first vice president; Marguerite Cook Lawson, '22, second vice president; Jim Purdy, '49, third vice president and Florence Ferguson, '00, secretary-treasurer.

Joe Boothby, out-going president of the Puget Sound Alumni club, was general manager of the event.

### Stone Wins Plaudits In 'South Pacific'

Melbourne newspaper critics this week applauded the performance of Leonard Stone (Leonard Steinbock, '46) as the hilarious sailor, Luther Billis, in the Australian production of Rodgers and Hammerstein's "South Pacific." The four leads were flown "down under" in August and rehearsed with the Australian company a month before opening.

Quoting from the Melbourne papers, "Most of the comedy honors go to Leonard Stone as a hilarious sailor, Luther Billis . . . the routine with Nellie in their concert dance number is incredibly funny . . . He led the troops in the big popular hit, 'There's Nothing Like a Dame'."

Writers continued, "When Luther Billis (Leonard Stone) and his typically ill-dressed bunch of gobs arrived, everything zoomed and the show never looked back . . . Stone played the comedy role of the piece very well, he was the perfect brash, troublesome GI."

Australian Prime Minister Menzies congratulated Stone on his performance, commenting that he enjoyed his portrayal more than the Luther Billis of the New York cast.

### Frank Bennett Named EOCO President

Frank B. Bennett '21 assumed his new duties as president of Eastern Oregon College of Education this fall.

Bennett has served as superintendent of Salem schools since 1939. Following graduation from Willamette he received an M.A. degree from the University of Oregon and in 1948 was awarded an honorary doctorate of education degree from Willamette.

The new college executive began his educational career as a rural elementary teacher in Boulder, Idaho. He served in the U. S. Army during World War I, was principal of Westport schools from 1921-22 and has held superintendentcies since then in five Oregon communities, including Prairie City, Enterprise, Tillamook, Albany and Salem.

He has served as a guest professor at Oregon College of Education, Willamette, the General Extension Division and the University of Oregon. Mr. and Mrs. Bennett are parents of five children.

### Athletic Staff Honored By Portland Alums

The Portland alumni club held a special dinner meeting on Saturday, August 23, honoring coaches Ted Ogdahl, Jerry Frei and John Lewis.

Walter E. Erickson, '33, former president of the Willamette Alumni association, presided at the meeting. Pres. G. Herbert Smith was featured speaker of the evening.

Following the dinner and program, alumni attended the Shrine All-Star football game at Multnomah stadium.

### Southern California Alums Hold Picnic

The southern California Alumni chapter held its annual picnic at the home of Dr. and Mrs. Willard Geer (nee Mary Wells, '24) on Saturday, October 18, according to reports from Kay Ringe, '38, secretary. Eighteen alumni participated in the afternoon activities, which included swimming and partaking of hot dogs and cokes.

Each of the club members donated one dollar which is being given to the University for application on a television set for Baxter Hall.

# Willamette ALUMNUS

A Publication of the Director of Information and Alumni Affairs.  
Published at Willamette University, Salem, Oregon

NANCY STUART, Editor

BEVERLY LYTLE, Assistant



### Alumni Association Executives:

President	W. W. HERMAN CLARK, B.A. '14
Vice-President	VERNE BAIN, B.A. '23
Secretary	MRS. P. H. BRYDON, B.A. '32
Executive Committee	FRED PATTON, B.A. '24 DR. R. C. BLATCHFORD, B.A. '27
Ex-Officio Member	WALTER E. ERICKSON, B.A. '33

### Law Alumni Association Executives:

President	BRUCE SPAULDING, LL.B. '30
Vice-President	W. W. MCKINNEY, LL.B. '25
Secretary-Treasurer	E. O. STADTER, LL.B. '30
Executive Committee	BERNARD NEWBY, LL.B. '32 GEORGE R. DUNCAN, LL.B. '25 FRANK J. VANDYKE, LL.B. '31

VOL 9, No. 1

OCTOBER, 1952

## TABLE OF CONTENTS

Article	Page
31st Annual Homecoming to Honor Spec Keene	4-5
<b>News</b>	
Miss Homecoming Extends Special Invitation to Return, November 8	2
Around the Campus	3
Alumni Contributions	6
Class Notes	7-8

## The Cover . . .

Ted Ogdahl, making his debut in college coaching circles this season as Willamette football mentor, welcomes "back home" his good friend and the man who started him in his coaching career—Spec Keene. Now director of athletics at Oregon State College, Spec returns to the Willamette campus after a nine-year absence. On Saturday, November 8, he will take a familiar place on the Bearcat bench to watch "one of his boys," Ted Ogdahl coach the Willamette eleven against the Linfield Wildcats.

## "Around the Campus"

Dr. G. Herbert Smith was one of the principal speakers at the Kappa Alpha Theta national fraternity conference in Sun Valley last summer . . . the only male speaker to address the national women's group.

New feature in the Willamette summer school this year was an early morning, 7:50 a.m., business course series . . . it was convention time on campus this year with the Boy Scout Leaders' convention, Beaver Boys' State, Girls' State, Tuberculosis Health Association and the Methodist Lab School all meeting here . . . at different times. Summer school had 135 students enrolled.

Willamette was featured on a world-wide broadcast September 18, when a portion of Freshman Glee was aired over the Armed Forces radio program, "Way Back Home" . . . the program

was heard in Europe, the South Pacific, and countries where the AFRS is able to operate.

Dr. Thomas Russell Bennett, former dean and professor of philosophy and religion at Kendall college in Evanston, Ill., was named associate professor of philosophy and head of the philosophy department in late August . . . An average of 87½ per cent of Willamette law graduates passed the 1952 Oregon bar examination, according to figures released by the State Supreme Court. An over-all average of 68 per cent passed this year's test. This is the third year that Willamette has exceeded the state average.

Carl Hall, artist-in-residence, has been invited to show a work in the coming Whitney American Art Show, sponsored by the Whitney Museum in New York . . . the young artist, whose paintings of Oregon scenery were the subject of a Life magazine color article in 1948, opened the university art gallery shows this fall with 20 new works, including water colors, oils, ink and pencil drawings and landscapes.

Pres. Smith and Maj. Norman W. Campion flew to Montgomery, Ala., in October for a national conference of university presidents and AFROTC commanding officers . . . enrollment figures for fall registration surpassed last year's total, with 1067 students enrolled in the three colleges.

Emery A. Brownell, director of the National Legal Aid Association, was principal speaker at a luncheon September 20, sponsored by the law school. The legal director spoke here in conjunction with the fifth anniversary of the Willamette University legal aid clinic, which is the only organization of its kind on the Pacific Coast.

A chaplain career program was introduced into the AFROTC fall semester curriculum in September. It was adopted simultaneously by college AFROTC units throughout the country.

Murco Ringnalda, head of the journalism department, received a doctorate in philosophy from the University of Southern California, this summer . . . Willamette was featured for the second time in September on a world wide broadcast when the a cappella choir was heard on the "Way Back Home" broadcast.

Willamette's second annual Parents' Weekend doubled its last years attendance, bringing more than 500 parents to the campus for the two-day all-campus affair . . . the University Players, under the direction of Dean Graunke, have scheduled four major productions for the 1952-53 theater season—the four hits are "The Happy Time," November 20-22; "The Shop at Sly Corner," February 5-6; "Pygmalion," March 5-7; "Good News," April 30-May 1. Season tickets are available by writing to the Department of Dramatic Arts . . . special price for season tickets: \$2.25.

Drs. Gale Currey and Marion Morange, back from three months in Europe and the British Isles, lived in Parisian Artist Beatrice Appia's seventh floor studio for two weeks . . . aboard the new luxury liner, "United States," the travelers encountered an Atlantic hurricane, two days out of New York.

Quoting from an article in the September 26 issue of The Collegian which was titled, "Phi Delt Leaving—Doggone":

"I only regret that I have but one life to give to Willamette." So said Schneebles, once winner of the ugly man contest, famous train runner under, six-year veteran in all classes, favorite chapel speaker, all-around participant in Kangaroo Kourt, over-active intramural, varsity football and basketball follower, and—number one canine on the campus.

"Long-time pet of the Phi Delta Theta house, he will leave soon for the peaceful life on the farm. Too many masters, too much disturbance, too many summers behind him are major reasons for his departure. More basic, however, is the fact that a Phi Delta Theta pledge is allergic to him and has spent many long hours in the infirmary.

"News of the shaggy-haired mongrel's departure came as a shock to students of Willamette, especially to the old-timers who have been tripped up by the favorite Phi Delt's mad dashes after squirrels.

"Everyone save the squirrels will be sorry to see the good pooch Schneebles leave. And even the squirrels might be sorry, too, for it's a fact that in his six glorious years here, Schneebles never caught a single one."

Copies of the 1944, '45, '48, '49, '50 and '51 Wallulahs are available by writing to Jane Notson, Editor, 1953 Wallulah, Waller Hall. The yearbooks are being sold for a dollar per copy. For the convenience of alums who may wish to secure these editions, Miss Notson will have the Wallulah office open on Homecoming Day, November 8, from 9 to 11 a.m.

# 31st Annual Homecoming to Honor Spec Keene

On November 8, alumni, "his boys" and townspeople will pay tribute to one of the greatest single figures in Northwest athletic circles—Spec Keene. Under Spec, Willamette University amassed the greatest record of football victories in Northwest Conference history. During the Keene era, Bearcat football teams garnered nine championships, his basketball squads took four Northwest titles, and his baseball clubs captured five conference crowns. Keene pigskin squads ran a string of 16 consecutive Homecoming victories. Whether on campus or elsewhere on November 8, Spec's "boys" will join in paying special recognition to their former coach and friend.



By Stan Nelson

When the 1952 Willamette Bearcats dig their cleats into the McCulloch stadium turf, Saturday, November 8, in the annual Homecoming football game, played this year against the Linfield college Wildcats, they will be paying homage to a guy most of them never saw before, but a man that made the name they will be playing under—Willamette—a great one as far as football is concerned.

The man is, of course, Roy S. "Spec" Keene, whose Willamette teams of a glorious 17 year reign made him one of the greatest single athletic figures in the entire history of the Northwest. Honored along with Willamette's grand old man of football will be what are known affectionately as "his boys"—the kids that played under him; not only the football players, but the basketball and baseball artists as well. Reminiscence will hang thick in the air like a London fog when "Spec and his boys" get together again on "Spec Keene Day" of Willamette's Homecoming November 8.

What makes the day more important in the minds of the people returning to the campus and to those already there is the fact that Ted Ogdahl, one of the greatest football players to perform under Keene, is now head mentor of the Bearcats. Ogdahl comes to Willamette from a coaching job at Portland's Grant high school where he had a brilliant record as a coach.

To the average Willamette pigskin fan, the Capital City institution of higher learning is at the dawn of a new era such as Keene had at the school. That, of course, remains to be seen. Maybe these grid-happy individuals will know more about that after they see Ogdahl's crew in action. It is an optimistic look to the future that is right now only mere speculation. The campus will be filled on November 8 with people that are remembering past glories on the gridiron. It is with the past, namely, the era of Spec Keene, that we are concerned with at the moment.

Under Spec, Willamette became kingpins

(Editor's note: An alum of '53, Stan Nelson, recently authored an article on Spec Keene for the Sunday Oregonian. He is currently campus sports correspondent for The Oregonian and former sports editor of The Collegian.)

of the Northwest Conference. A look at the record will immediately show why. Keene-coached football teams amassed a total of 82 wins, 51 losses and six ties in the 17 years of his reign. This mark does not sound like anything especially great, but when one considers that in those 17 big seasons, Bearcat grid teams were sent down to defeat only 16 times while they pummeled conference opponents to the tune of 66 wins, garnering nine championships.

#### Spec's Teams Hold Homecoming Record

Spec's teams ran a string of 16 consecutive Homecoming victories. In his last 14 years at the school, the conference losses could be counted on the fingers of two hands. He never finished worse than second in that time.

Over a three-year period from 1940 to 1942, the Bearcats under Keene averaged 37 points against conference opposition. Best year was in '41 when they averaged 45 points per game. His 1934 club had the best record, however, winning eight out of nine games, the single setback coming at the hands of Oregon State College, 13-0.

Non-conference action didn't go nearly so well for the Bearcats under Keene. They plucked only 16 wins in 54 Kings-X foes, but it is not hard to see why they had a rough time of it when one takes a gander at who they played.

Common rivals in the days of Keene were such clubs as Oregon State college, University of Oregon, Washington State college, University of Washington, and such powerful independents as San Jose State, once coached by "Pop" Warner, and University of Portland. It's a pretty tough task coming out on top of clubs like these every Saturday.

Although his football teams gave Willamette its glory, the baseball and basketball squads of Keene have also come through with several championships. Five conference championships were rung up by his horsehidiers while the casaba crews notched four titles while tying for another in 12 years as head coach of WU basketball.

It was said of Keene by Bill Phillips, Sr., now manager of the Valley Motor Co. in Salem, that Spec's first love has always been baseball. He once pitched for

the Portland Beavers of the Pacific Coast League and played a lot of amateur ball in his day.

Wherever Spec has been, his record is nothing short of brilliant. He graduated as a three-sport man from Salem high school. From there he attended University of Missouri for a year where he played football and baseball. OSC got him for the rest of his college career where he played baseball and basketball, captained the baseball team in his senior year and was student body president of the school to boot.

#### Corvallis Starting Point of Career

His first coaching job was with Corvallis high school which started him on the road to success as a football wizard. Spec's best record was racked up that year of 1922 when his Spartans scored 175 points to the opponents' 6 during the regular season of play. They were beaten for the national high school championship that year by Scott high school of Toledo, Ohio, 28-6. The Corvallis team averaged 152 pounds to Scott's 180.

Oregon State called him back then as frosh mentor of football and baseball. "We never lost a football game in three years," Keene told us, but adding remorsefully, "we lost one in baseball."

In 1926 Spec came to Willamette. An interview with President Carl Doney was arranged for him by Phillips. Since then Phillips has been one of the Bearcats' most avid rooters. He used to have to step behind the grandstand before each game and erupt the contents of his stomach because he was so excited.

Keene left Willamette in 1943 to become a lieutenant commander in the navy and director of athletics at the Del Monte Navy Preflight training school in California. Said to have a "knack" for drawing players, Keene put together a powerful service team in 1944 which literally pounded the daylights out of every college and service team they came up against.

Returning to private life, Spec went in with Howard Maple in the sporting goods business in Salem. In 1946 he became director of athletics at Oregon State college where, since his arrival, things have really been humming. Massive Gill Coliseum was constructed under the term of

Keene and a new 25,000-seat football stadium is now under construction as are two new baseball fields and four practice football pastures.

Despite the marvelous record of the man, "his boys" will not be returning to the campus because of Spec Keene's victories on the field of play. For Spec not only won ballgames, he won the hearts of his players as well. He played the game for everything it was worth, or, as Spec told us himself about his football games, "All of them were tough every Saturday." But while he had "his boys" playing hard football they also played it cleanly for Spec. The results: they all have a good word for Spec Keene today.

#### "Mom" Keene Endearred by Athletes

Another person we cannot leave out that is as much endeared to the hearts of Spec's boys is Mrs. Keene. She followed the games closely and was ready with her opinions, but her most memorable — and — greatest contribution came off the field of play. Here Mrs. Keene acted as a mother away from home for many of the boys. No player of Keene's ever had his tonsils out but what he spent a few days recuperating at the Keene household under the care of "Mom" Keene.

Mrs. Keene also nursed them back to health in case of any sickness which might befall a player and provided a place to stay over vacations for those boys who were too far away to travel to their own homes.

"Mom" Keene will no doubt share the limelight with her husband for Spec's players when they come pouring back to the Willamette campus next Homecoming day to show their appreciation.

As Walt Erickson, once a standout on the gridiron for Spec and now vice-principal of Portland's Cleveland high, put it, "For 17 years Spec and Marie Keene were Mr. and Mrs. Willamette to hundreds of students on the campus. They shared their enthusiasm for Willamette with students by their tireless work for all phases of the university program. Through his coaching, Spec made a contribution to the life of each one of 'his boys,' and subsequently to athletics in the Pacific Northwest."

Another of Spec's old players and one who is working hard on "Spec Keene Day" right now, prominent Salem lawyer Bruce Williams, puts it this way, "For many years Spec meant Willamette athletics, and it is easy to remember both his influence upon them to better themselves in every way scholastically."

Finally the present coach and one of Spec's greatest ball players, Ted Ogdahl, said of Keene, "Spec Keene made a lasting impression on any boy who ever played for him. He was not only your coach, but your advisor, friend and family away from home. I have played for many coaches and sincerely feel that Spec's ability in this field was superior. He played the game fair. He hated to lose. There is only one 'Spec' Keene."

Who are some of the boys who will be returning to the Willamette campus November 8? Many of them cannot make it because of distance and present ties, but whether they are at Willamette or at home on Homecoming day, their hearts will all be present.

#### Nine Little All-Americans Tutored by Keene

Some of the greatest players to come out of Keene's era are the nine Little All-

Americans he nurtured. The fabulous string of nationally acclaimed players started with Keene in 1934 and everyone to collect the honor since at least got his start under incomparable Spec.

Willamette Little All-Americans started with Loren Grannis in '34 and concluded with End Bill Reder who placed on the 1947 squad. The last two, Reder and Marv Goodman who received the honor in 1946, finished under different coaches but got their start under Keene.

Others being chosen to the positions on national teams are names that will easily be remembered by most of the alumni. John Oravec, a halfback, made Little All-American in 1935; fullback Dick Weisgerber in '36; guard Elliott Becken in '37; end George Abbott, '38; and two more guards, Joe Holland, '39, and Anthony Joe "Tony" Fraiola in 1941.

The list of other stars that came out of the Keene era is a lengthy one and as Spec said, it would be impossible to name them all. But names such as Mike Balkovic, Walt Erickson, Nick Beacon, Bobby Douglas, Harold Hoyt, Art Gallon, Harold Hauk, George Sirnio, Charlie and John Versteeg and Martin Barstead will strike a note of familiarity for many.

Still others are Bill Beard, or those players on the 1941 squad: Gordon Moore, Buddy Reynolds, Gene Stewart, Al Walden, Pat White, Marshall Barbour, George Constable, Chuck Furno and Neil Morley. Or how about some of these: Garnie Cranor, Hank Ercolini, Ken Jacobsen or Paul Carpenter. They all were football names in their day.

Not only in football did the great Keene turn them out but in other sports as well. Most people recognize the name of Ed Cardinal, one of Willamette's greatest basketball stars, and Bill Lemon, another great on the maple court.

#### Keene Boys Now in Pro Sport

Several Keene-coached baseball players were successful in pro baseball after finishing their college careers. Prominent in these were Andy Peterson, Bill Hanauska, Kenneth Manning, Earl Toolson, Bill Beard and Clint Cameron.

Of his football players, extra point specialist of the '30's, Dick Weisgerber, had the most lasting career in professional football. Weisgerber played four years for the Green Bay Packers. Oravec was another that played professionally after graduation. One could name about 12 in football and another dozen in baseball that didn't hang up their cleats and spikes for awhile after leaving Willamette, but went on to greater heights.

Keene has lost contact with some of his boys, but writes to many of them yet. They are spread all over the world one might say. A good share of them are still in Oregon, but Williams informed us that Homecoming will draw ex-Keene players from at least five different states.

Where are they now? Weisgerber, for one, is still in Green Bay, Wisconsin, in the lumber business. George Sirnio, Garnie Cranor, John Oravec and quite a number of others are still in Salem. Tony Fraiola and Bobby Douglas are coaching in Hawaii while Hank Ercolini, Bill Reder, Ken Jacobsen and others are coaching in Oregon somewhere. Bill Lemon coaches at Tacoma, Wash., and Art Gallon is working on his doctorate at the University of California.

As we said, some will not be able to

make it to Homecoming, but we'll be looking for many of the boys of Spec Keene to return, to visit with their old coach and inspiration, once again see the guys they used to battle for positions of the team against, and themselves be honored by the Willamette populace of that day.

Are they great? "You bet they are," said Spec; "In my book they all are great and I'll be looking forward to meeting and reminiscing with all of them once more."

## Bearcats Come Back In Fifth Grid Contest

Operating under the direction of new coach Ted Ogdahl and line skipper Jerry Frei, Willamette's Bearcats at the midway point in the season showed a record that could have been exceptional—with the addition of four or five conversion points at crucial times. The Bearcats started in sensational fashion by crushing Chico State 53-0, but then came lean days as they were tied and defeated twice in their next three starts.

The 'Cats came back in their fifth outing of the season to decision Lewis and Clark 29-6.

The telling factor in three of the earlier tilts were those pesky conversion boots. In their second mix of the campaign the Ogdahl troupe tied College of Puget Sound 20-20. Then came the Northwest conference opener with College of Idaho at McCulloch stadium. The Methodists dropped that one in heart-breaking fashion 7-6 as the Coyotes tallied in the last 38 seconds.

The next week, in another conference clash, the Willamettes again were frozen out by the margin of one conversion boot as the highly favored Pacific Badgers barely edged them 27-26 in a wild and wooly thriller.

## Additional Class Notes '51

**Arthur Beddoe** served as a deputy sheriff for Marion county this last summer. He is now enrolled at the Willamette Law College.

**Robert De Bord** was commissioned a second lieutenant in the U. S. army in September at Fort Riley Army Officer Candidate school. He is now attending an army specialty school for training in one branch of the service.

**Howard A. Mader** is one of 61 graduate students enrolled for a year of study at New York University's School of Retailing. Howard did graduate work at the University of Oregon last year.

Married: **Barbara Ann Garrett** to Donald H. Burger, ensign with the United States Navy, on June 13 at the San Point Naval Air Station chapel in Seattle, Wash.

**R. E. (Gene) Smith** was recently named justice of the peace in the Grants Pass district by Gov. Douglas McKay.

## '52

**Ernest Duvall** entered the University of Oregon medical school in Portland, this fall.

Married: **Sue Mellor** to **George E. Juba**. They are residing in Portland.

Born: To Mr. and Mrs. **James Burr Miller** (nee **Jean Estey '51**), a son Jeffrey last July.

# ALUMNI CONTRIBUTORS

## WILLAMETTE UNIVERSITY ALUMNI LOYALTY FUND

(Includes Law Loyalty, Dormitory and Other Funds)  
JULY 1, 1951 TO OCTOBER 15, 1952

## TRUSTEES EMERGENCY FUND ALUMNI

1873 William Miller\*\*  
1890 A. W. Bolkins  
1897 Hetta Field  
1898 Dr. Frank E. Brown\*\*  
Mr. and Mrs. George D. Hubbard (Edna Rugg)  
1900 W. A. Manning\*\*  
1903 H. W. Swafford  
1905 Ed Averill\*\*\*\*  
1908 Esther Crandall Manning\*\*  
W. E. Winslow\*\*\*  
1909 Edith Carter Kuney  
1910 Perry Riegelman  
W. T. Rigdon\*\*  
Annie Pigler Woods\*\*\*\*  
Lottie Deyve Winslow\*\*\*  
1911 Hattie Beckley Bellinger  
A. A. Soule  
Lois Byrd Upjohn  
Guy A. Woods\*\*\*\*  
1912 Mr. and Mrs. Merton R. DeLong\*\*\*\*  
(Mae Techemeyer)  
Alma Altman Hurst  
Earl A. Nott\*\*\*\*  
Francis Pohle Utter  
1913 Mr. and Mrs. Carl Hollingsworth (Pearl Bradley)  
Charles Randall  
Mr. and Mrs. C. L. Starr\*\*\*\*  
George Winslow\*\*\*  
1914 Mr. and Mrs. Ralph W. Farris (Lillian K. Essene)  
Errol C. Gilkey  
1915 Naomi Runner Masseur  
Dr. Helen Pearce  
Lucile Kuntz Schramm  
Florence Prince  
Winslow\*\*\*  
1916 Florence Page  
Nussbaum  
Thomas D. Yarnes  
1917 Rosamond Gilbert  
Haight  
W. A. Wiest  
1918 Mary E. Eyre  
Loyal R. Haight  
Mr. and Mrs. Roy W. Metcalf (Lola Cooley)  
Blanche Baker Proctor  
Marie Lufhy Putnam  
Adolph G. Spiess  
1919 Dr. R. M. Gatke  
Lella Johnson  
Vesta M. Mulligan  
1920 Phil Bartholomew  
Freda Campbell  
Estelle Satchwell  
Gatke  
Mr. & Mrs. K. C. Legge  
(Velma Baker)  
Hazel Bear Stewart  
1921 Minnie Ambler  
Mr. & Mrs. Wm. Baker  
(Rhoda Persons)  
Frank B. Bennett  
Fay Peringer Coulter  
Mr. & Mrs. Lawrence Davies\*\* (Edna Gilbert)  
Mr. & Mrs. Paul Flegel  
(Alice Warre)  
Tinkham Gilbert  
Elsie Lippold Hill  
G. Clyde Ausman  
McGrew  
H. R. Spiess  
Hubert T. Wilken\*\*  
1922 Ethel Mcroft Bennett  
Truman W. Collins\*\*  
M. C. Findley\*\*\*  
Grace Collins  
Goudy\*\*\* \*\*  
J. Fred McGrew

Class	No.	Amount	Class	No.	Amount
1890	1	\$ 2.00	1929	12	238.50
1897	1	5.00	1930	9	110.00
1898	2	5.00	1931	7	122.50
1903	1	5.00	1932	8	272.50
1905	1	17.50	1933	6	19.50
1908	1	50.00	1934	7	209.50
1909	1	15.00	1935	6	42.50
1910	3	117.50	1936	4	17.50
1911	4	89.50	1937	4	45.00
1912	5	105.00	1938	7	43.00
1913	6	325.00	1939	2	30.00
1914	3	15.00	1940	4	25.50
1915	4	45.00	1941	3	35.00
1916	2	13.00	1942	11	101.00
1917	2	7.50	1943	3	120.00
1918	7	42.50	1944	1	
1919	3	20.00	1945	12	43.00
1920	6	35.00	1946	5	38.00
1921	13	97.00	1947	7	81.25
1922	8	2,262.00	1948	4	17.00
1923	6	54.50	1949	5	119.50
1924	4	128.50	1950	6	47.50
1925	8	142.50	1951	11	77.50
1926	9	154.50	1952	1	11.00
1927	23	611.00			
1928	5	83.50			
			Total		\$6,314.75

Noble S. Moodhe  
Mr. & Mrs. Dean Pollock\*\* (Mildred Brown)  
R. H. Rehbock  
E. R. Woods  
1923 V. D. Bain  
J. C. Brougher  
Jay D. Coulter  
Mrs. Chester Downs  
Helen R. Hoover  
Deane Hatton Moodhe  
1924 Byron Arnold  
Margaret L. Gates  
Robert C. Notson\*\*  
Kathleen LaRaut Wrenn  
1925 Rawson H. Chapin  
Dr. Dwight Findley\*\*  
Ellis Von Eschen  
Frances Hodges  
Laura Phipps Klaus\*\*  
Floyd Moore\*  
Adelia White Notson\*\*\*  
Clarence D. Phillips\*\*\*  
Carolene Tallman  
Gladys Morton Wilder  
1926 George Atkinson\*\*\*  
Frederick Arpke\*\*\*  
Louise Kaufman Barton  
Mary Jean Beagle  
Esther Baumay  
Brougher  
Dr. Filmer Carter\*\*  
Charles Nunn  
Hallis Vick  
Marjorie Kadow  
Woodruff  
C. G. Wrenn  
1927 Mrs. H. L. Adams  
Remoh Tryor Arpke\*\*\*  
Mildred McKillican  
Atkinson\*\*\*  
Dr. & Mrs. Nathaniel Beaver (Millicent King)  
Dr. R. C. Blatchford\*\*\*  
Margaret Bodine  
Carter\*\*  
Wanda Elliott Chapin  
Orland Cheldelin  
Dr. W. T. Edmundson  
Mr. & Mrs. Harold G. Fyfe (Hazel G.)  
H. Clare Geddes  
John M. Givens\*\*\*\*  
Ronald Haines  
M. L. Hallmark\*\*\*  
Nina Froloff Haynes  
Earl M. Lawton  
Margaret Tomlinson

Phillips\*\*\*  
Sadie Jo Read  
Keith Rhodes\*\*\*  
John P. Russell  
Walter L. Welbon  
1928 Mildred Mills  
Blatchford\*\*\*  
A. W. Hermann  
Margaret Arnold Huson  
Mr. & Mrs. Hugh McGilvra\*\* (Louise Nunn)  
Mr. & Mrs. Chas. Redding\*\* (Phoebe E. Russell)  
1929 Donald K. Grant\*\*  
Dr. & Mrs. Chas. Kaufman (Margaret Morehouse)  
Elma P. Kimbrell  
Mr. & Mrs. William Ledbetter (Grace White)  
Elsie Tucker Lewis  
G. K. Litchfield  
Mr. & Mrs. John D. Minto (Mary Kupper)  
Elma White  
Montgomery  
1930 Michael Balkovich  
Mary Hershberger  
Church  
Marjorie Lierly  
Findley\*\*  
Paul E. Geddes\*\*\*  
Lillian Scott Haines  
Margaret Hogg  
Mr. & Mrs. Walter Kaufman (Katherine Everett)  
Frances McGilvra  
Litchfield  
Bruce Spaulding\*

Class	No.	Amount	Class	No.	Amount
1873	1	\$ 10.00	1932	1	
1898	1	500.00	1933	1	
1900	1	25.00	1934	1	
1908	1	25.00	1935	1	
1910	1	50.00	1936	1	
1913	2	250.00	1937	1	
1921	1	25.00	1938	1	
1922	3	1,800.00	1939	2	
1925	2	62.50	1940	1	
1926	1	25.00	1941	2	
1927	1	25.00	1942	2	
1928	2	100.00	1943	1	
1929	1	100.00	1944	1	
1930	1	12.50	1945	1	
1931	5	6,125.00	1946	1	
1933	1	1,000.00	1947	1	
1934	3	40.00			
1937	3	20.00			
1938	1	160.00			
1939	2	20.00			
1940	1	15.00			
1941	2	35.00			
1942	2	380.00			
1947	1	375.00			
			Total		\$11,180.00

1932 Mr. & Mrs. Floyd Albin  
(Helen Stiles)  
Mr. & Mrs. P. H. Bryden  
(Edith Findley)  
Charles Campbell  
Alfred J. French  
Mr. & Mrs. Roy Harland\*\*\*\*  
(Beneitta Edwards)  
1933 W. W. Balderee\*\*  
Mr. & Mrs. E. W. Crothers (Hazel Snyder)  
Eloise Sidwell Crow  
Frances Laws  
Margosian  
Mr. & Mrs. Harold Rose  
(Lucile Flannary)  
1934 Barbara DeGraff  
Enoch Dumas\*\*\*\*  
Mr. & Mrs. Herbert C. Hardy\*\* (Eloise White)  
Mr. & Mrs. Scott Hill  
(Edythe Glaisyer)  
Louise Fletcher  
Mason\*\*\*  
Madaline Schmidt  
Oliver  
Dr. Richard H. Upjohn  
Miles Woodworth  
Mr. & Mrs. L. M. Woodworth (Margaret Wood)  
1935 Robert M. Barton  
Kenneth A. Oliver  
Mr. & Mrs. Harlan M. Scott (Edith Sidwell)  
Mr. & Mrs. William Mosher (Eleanor Yarnes)  
1936 Mr. & Mrs. Dwight Aden  
(Esther Black)  
George DeGraff  
E. T. Tweed  
1937 Steve Anderson\*  
Mr. & Mrs. Joseph Harvey\*\* (Jane Fisher)  
Julia G. Johnson  
Harry S. Mosher  
Earle V. Potter  
Chas. Versteeg\*\*  
1938 Robert F. Anderson\*\*  
Antoinette Lambert  
Bose  
Barbara Crookham  
Euler\*\*\*  
Mr. & Mrs. Chas. Neville\*\*\*\*  
(Mary Jeanette Sargent)  
Dr. & Mrs. Amerton R. Perry (Jean Bell)

1939 Mervin Brink\*  
Janet Stowell French  
Hazel Johnson Skopil\*\*  
Raynor S. Smith\*\*  
1940 Hallie Starr  
Anderson\*\*  
Mabel Lenz Baklovich  
William Dick\*  
Mildred Pederson Hall  
Jessica Kinsey  
1941 Edwin E. Cone\*\*\*  
W. H. Nunn\*\*  
Otto R. Skopil\*\*  
Reiter & Day Stern\*  
1942 J. S. Bohannon  
June Woldt Cone\*\*\*  
Jack R. Chapin  
Mr. & Mrs. Robert Daggett (Dorinda Brakke)  
Dr. M. A. Dunbar  
Loren Hicks\*  
Delores Netz Nunn\*\*  
R. L. Purbrick  
Keith Roberts  
Margaret Hardman  
Wilson\*\*  
Joseph Van Winkle  
Marion Sanders  
Woodham  
1943 Mark Hatfield  
Audrey Fehler Smith\*\*\*  
Frances Briggs Van Winkle  
1945 Stanley J. Buch  
Mr. & Mrs. Homer B. Davis (Eunice Masseur)  
Rev. John H. Glasse  
Mary Jean McKay  
Harrold  
Nevitt B. Smith  
1946 Elmer Harrold  
John S. Horton\*\*\*  
Margaret Shipman  
Guiser  
John W. Stortz  
Helen Lois Wilson  
1947 Frank M. Bennett  
June A. Dunn  
Virginia Hobbs  
Dale E. Jones  
R. E. Park\*  
Nancy Stuart  
D. G. Wilson\*\*\*  
Otto Wilson, Jr.\*\*  
1948 Lora Robinson Bates  
Mark Crunican  
Allan Lame  
Donald A. Reitzer  
1949 James K. Bartlett  
Dr. M. E. Corthell\*\*\*  
Roy Fedje\*\*\*  
James A. Nickel  
Barbara McDuffee Tripp  
1950 Robert B. Bennett  
Dale G. Cleaver  
Frank Lockman  
Albert R. McMullen\*  
Russell Tripp  
Frank M. Washburn  
1951 Alice Adams  
Shirley Ambler Beckett  
Mary Margaret Will  
Corthell  
Ensign Barbara Burger  
(Barbara Ann Garrett)  
Florence Goodridge  
Joan Holbeck\*\*\*  
Ruth Patterson  
Marion Sayre  
Mr. & Mrs. Robert Skirvin (Betty Herstrom)  
Esther Weinstein  
1952 James B. Burnes\*  
Loyalty  
\*Law Loyalty  
\*\*Emergency  
\*\*\*Other (including scholarship)  
\*\*\*\*Dormitory Fund

'83

**Rolla A. Harbord** received an honor last June that comes to few men when he was presented a 50-year Masonic emblem from the Spokane, Wash., chapter.

'89

Mrs. Martha E. Brown (nee **Ellen Tenney**) was named Clark county's "Mother of the Year" in Washington, last May. She is the mother of 11 children, nine of whom are still living.

'95

**Fred Lockley** was recently made an honorary life member of the New York State Historical Society. The honor came to Lockley because of the numerous historical books he has written, including "History of the Columbia River Valley," "Oregon Folks," "Oregon Yesterdays," "Oregon Trail Blazers," and others, and also because Lockley's family originated in New York state.

**Malcolm Medler** is with the Oregon State Blind Commission as a teacher for the blind under the travel course.

**Marjorie Christenson King** has been teaching in Eureka, Calif., for the past two years.

**Albert Kletsch** is superintendent of schools in Toledo, Washington.

**Walter Lee** is serving as president of the Board of Missions of the Friends Church of the Northwest area. He is living in Eagle, Idaho.

**Theodore Benjamin Mitzner** received a doctor of philosophy degree from the University of Southern California, at commencement exercises on June 14.

'28

**Dr. Paul G. Trueblood**, assistant professor of English literature at the University of Washington, has been designated an ACLS Scholar by the American Council of Learned Societies. Along with the designation goes a \$5000 research grant for

with the Best Foods Co. and her husband holds a position with Low and Company Incorporated. Agnes received her masters from Chicago University and later studied at Columbia in New York.

'37

Mr. and Mrs. **Paul Cammack** (nee **Phyllis Macy '38**) arrived in the United States the last of August from La Paz, Bolivia, where they have been serving as missionaries for four and one-half years. Since 1948 Paul has been manager of a 3,000-acre mission farm near Lake Titicaca in the Bolivian uplands, and both have taught in the Bible school for Indians since going to Bolivia in 1947.

'38

Major and Mrs. **Herman C. Estes** (nee **Alice Speck**) and their two daughters, Elizabeth and Marie Ann, recently returned to the United States from the Philippines where he has been serving a two-year tour of duty with the U. S. Air Force. They departed from Manila October 10 aboard the USNS "General D. E. Aultman." Maj. Estes will go to Headquarters, Continental Division, Military Air Transport Service at Kelly Air Force Base, Tex., for his new assignment.

**Verne C. Reierson** is in charge of establishing the first extensive public health education program in Burma. With him are Mrs. Reierson (nee **Lorene Tompkins**) and their children.

'40

Lt. Col. **Stephen A. Stone, Jr.**, was returned to the United States in September after two years service in Korea. A few months before returning home Lt. Col. Stone bagged a Russian MIG. The flier is now stationed at the Willow Run Air Base in Michigan, near Detroit.

'42

Married: Catherine Reese to **John D. Taylor** this summer. Taylor was recently transferred to Washington, D. C., from the government post he has held in Manila the last five years.

Born: to Mr. and Mrs. **Maurice Fitzsimons** (nee **Jane Huston '46**), a daughter on May 24. The Fitzsimons are living in Coos Bay.

Born: To Mr. and Mrs. **Winston Taylor**, a daughter, Hope Cathlin, on May 18.

'44

**John A. Macy** received a Bachelor of Foreign Trade degree from the American Institute for Foreign Trade at Thunderbird Field, in Phoenix, Arizona, May 30. Specializing in South America, Macy completed the school's intensive training course in preparation for a career in American business abroad.

While at Thunderbird Field, Mrs. **Joan B. Thomas Macy** had an opportunity to learn language and customs of countries in which John plans to work.

**Ella Rose Mason Scudder** and her husband are co-directors of the Scudder-Oaks Country School for elementary and high school grades. The school is located at Claremont, California.

## CLASS NOTES

'99

Deceased: **Letitia E. Abrams** on April 5, 1952.

'01

Deceased: **Mrs. Myra Eugenia Robnett**, (nee Myra Murphy) this summer. Mrs. Robnett was the first nurse to start training under auspices of the Willamette University Medical school and was also a member of the first graduating class for registered nurses here.

'15

Deceased: **Edward Piasecki**, prominent Salem lawyer, August 23, by drowning when the fishing boat in which he was riding was turned over by huge waves near Newport, Oregon.

'24

Deceased: **Dr. Thomas Acheson** on September 4. Dr. Acheson has been serving as associate pastor of the Centenary Wilbur church in Portland.

'25

**George Moorhead** has been re-elected president of the Salem Geological Society.

'27

**Dr. James A. McClintock** represented Willamette at the inauguration of Lewis Webster Jones as president of Rutgers University, the State University of New Jersey, on May 8, in New Brunswick, N. J.

**Dr. Mary M. Erickson**, acting chairman of the department of biological sciences at Santa Barbara College in California, was recently featured in an article appearing in the Santa Barbara News-Press. The article concerned her intensive study of the life and habits of the lazuli bunting, a common bird with an uncommon name. Frank M. Erickson, her father and one-time dean at WU, is assisting her in the study unofficially.

study and research during a ten-month period beginning September 1.

**Ella R. Pfeiffer** has been promoted to sergeant first class in the WACs at European Command headquarters in Heidelberg, Germany, where she is assigned.

Married: Lois Peterson to **Beach Patton** June 14. He is teaching at the Hood River high school. The bride has taught at schools in Wisconsin, Minnesota, and Wrangell, Alaska.

'30

Mr. and Mrs. **Jack Trachsel** (nee **Laura Cammack '32**) returned to the United States from Kolar, India, where they have been serving as missionaries since 1949. They are now doing deputation work for missions in the Eastern U. S. They are living at Anderson, Ind., headquarters of the National Holiness Missionary Society which they represent.

'33

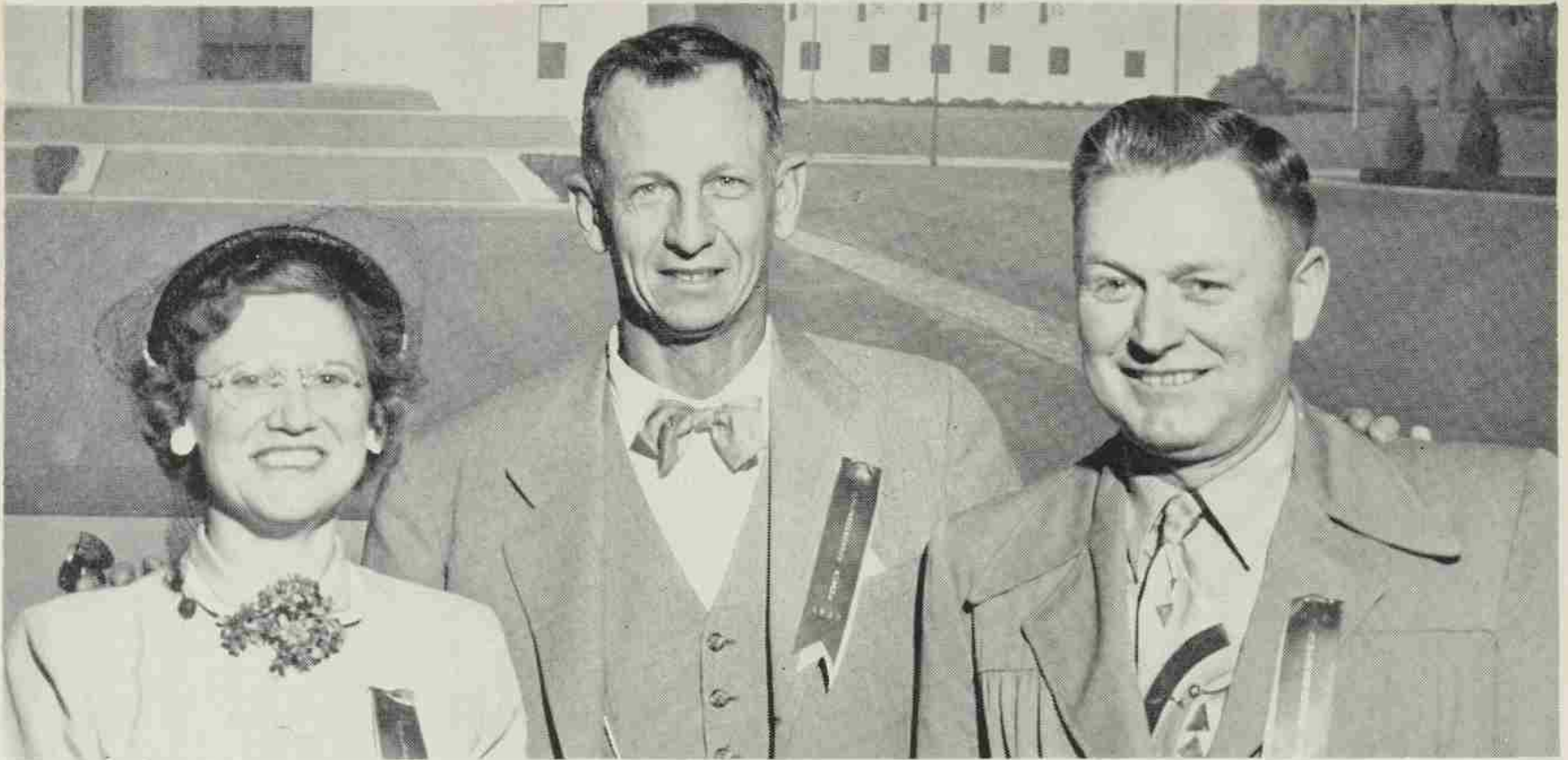
**Dwight B. Adams** has been appointed assistant business manager of Stanford University, beginning this fall. Adams was previously director of Stanford Village, the university-operated housing project in Menlo Park. His new duties will include matters pertaining to the Village, patents, research, contracts, and business office personnel.

'34

**Miles E. Woodworth** is serving as a flammable liquids engineer with the National Fire Protection association in Boston, Mass. Until his appointment in August he served as fire marshall in Portland.

'36

**Agnes Corthell Potsdam** is now living in New York City where she is employed



After 25 years as president of the class of '27, Bill Walsh (center) turns over presidency to Francis Ellis (right), following class elections on Alumni Day, May 31. Mildred Tomlinson Phillips will assist Ellis as secretary-treasurer. Walsh's term of 25 years is believed to be the longest in Willamette class president history.

## '45

Engaged: **Lois Kathleen Robinson** to **Kenneth L. Hosmer**.

## '46

**Robert Yost Dean** received his Doctor of Philosophy degree from the California Institute of Technology last June. Title of Dr. Dean's thesis was "Laplace Transform in Commutative Banach Algebras."

Dr. and Mrs. **Frank R. Peterson** (nee **Alice Fay Daugherty**) are living at Camp Stoneman, Calif., where he is a surgeon with the U. S. Army Medical Corps. They are parents of three children.

## '47

**Donetta Reese** is a member of the music faculty at Linfield college this year.

Mr. and Mrs. **Jesse Jones** (nee **Alice Rose**) are living in Lakeview where he is a state patrolman and Alice is teaching organ, piano and voice.

## '48

Married: **Louise Campbell** to **Dale A. Bates**. They are living in Salem where Dale is associated with the Salem Federal Savings and Loan Association and is now serving his second term as chairman of the Marion County Chapter of the American Red Cross.

Married: **Geraldine Louise Schmoker** to **Robert Elwyn Preston** in August. They are residing at Ann Arbor, Mich., where the benedict is working for his doctor's degree at the University of Michigan. He received his master's degree in music literature from the university this summer.

**Caroline Cooper** was recently named new full-time director of Christian Education at the Methodist church in Grants Pass. Her work includes three main fields: planning, recruiting and training.

## '49

**Sam Stewart** assumed duties as Oregon State Tax Commissioner October 15. He has been serving as Assistant Attorney General.

**Jack Stanley** is serving as manager of the Home Title Company in McMinnville.

**Adysse Lane** received her master of art degree in arts and letters at Stanford university last June.

Married: **Mary Lois Cotton** to **J. W. Reese** on June 7. He is a '49 graduate of the University of Oregon. They are living in Echo where they manage a dry goods store.

**Ray Fedje** was ordained an elder in the Methodist Church in June. He will begin work this fall for his Ph.D. at the Boston University School of Theology.

Married: **Ellen Louise Stuwe** to **Allen A. Lloyd, Jr.**, on May 25. They are living in Portland where he is with the Sears Department Store.

Married: **Byrl Ray Udvardi** to **James A. Nickel**, September 6 in South Bend, Indiana. They are living in Bloomington, Ind., where he is teaching on an assistantship at the University of Indiana and working

for his doctorate. She is a graduate of Indiana University.

Married: **Betty May Jackman** to **Dr. James A. Wilson**, June 14. The new Mrs. Wilson received her advanced degree at Columbia University and has been serving the last two years as a physical therapist at the Veterans' Hospital in Portland. He graduated from the Oregon Medical School and is now an intern at the Evanston hospital in Illinois.

Mr. and Mrs. **Richard C. Ploeger** (nee **Bonnie Daugherty**) are living in San Francisco where she is serving as a lab technician with the Irwin Blood Bank and he is a salesman with the Coast Equipment Co.

Dr. and Mrs. **Donald Preiss** (nee **Jane Acton**) and son **Kirk** are now living in Concord, Calif. Dr. Preiss is with the Shell Oil Co. in Martinez.

Married: **Nancy Montgomery** to **Lieutenant William Martin** on August 23 at the Fort Warden Army Chapel in Washington. Lt. Martin is now in Korea.

**Elora** and **Bob Sayre** were featured in a recent article, one of a series concerning working couples, in the Washington Post. She is secretary to the executive director for the State Department where Bob is an adviser on matters of technical cooperation.

**Lieutenant W. R. Bonnington** is stationed at the Travis Air Force Base near Fairfield, Calif., as a clinical laboratory officer. He is second in command at the Armed Services Blood Processing Laboratory.

## '50

Married: **Louise Luvin** to **Allen A. Straumfjord** in June. He is now attending the University of Oregon medical school in Portland.

Married: **Marilyn Mae Hill** to **Desmond Kent Walker** June 14 in Salem.

Sec. 34.66 P. L. & R.  
U. S. POSTAGE  
**PAID**  
Salem, Oregon  
Permit No. 152