

1963
class
(Manella)

OFFICE OF PUBLIC INFORMATION
WILLAMETTE UNIVERSITY
SALEM, OREGON
581-1641, Ext. 231

Freshman Glee
Dave Cromwell
January 23, 1963

For Immediate Release

Roger Bergmann, a 1962 graduate of Tigard High School, has been elected Freshman Glee Manager for 1963 at Willamette University in Salem. Picked to assist him is Michael Steding, son of Mrs. Florence Steding, 1321 NE 46th Avenue, Portland.

Bergmann is a pre-law major at Willamette while Stedman is majoring in psychology.

The Freshman Glee is a contest between the four classes at Willamette. Each class writes the words and music for an original song and then presents it to the student body. The theme of this year's Glee is "Novelty" and the event will be dedicated to Dr. Robert M. Gatke, professor emeritus at Willamette.

The winning class will be selected on the basis of the words and music of their song, its presentation and the formation marching of the group.

This year's Glee will be held March 9 in the Willamette gym beginning at 8 p. m.

Students Prepare Challenges To Competitors in Glee Fest

Sophomores and upperclassmen may prepare to meet the confident and enthusiastic challenge by the freshman class in the Freshman Glee challenge assembly Thursday. The assembly will be in the Fine Arts Auditorium during the convo hour.

DOUG McNISH, frosh prexy, will formally offer the challenge to participation in this annual campus event which evokes more student response than any other activity during the year.

Presidents of the other three classes will respond too with their acceptances and further declarations of the invincibility of the sophomore, junior and senior classes.

ALSO IN response to the taunts,

each class is expected to present the traditional song parodies, dealing mainly with the lack of coordination and voice ability of its competitors for the coveted Glee banner.

According to Freshman Glee manager Mike Steding, "This assembly is the official kickoff for Glee and attendance is important to a real sense of the enthusiasm for this event transpiring on Saturday, March 9."

"STUDENTS should also plan ahead in classes," Steding continued, "as the week of March 4 through 9 will not provide an abundance of study time with daily rehearsals."

Rehearsals are scheduled to begin Monday, March 4, at 5 a. m.

Scores Show Glee Judging

Results of Saturday night's Glee judging have been the subject of numerous rumors on the part of both participants and spectators, based, as usual, on their individual opinions. Now we have the official scoring.

In words and music, high went to the seniors with 81 points out of a possible 90, followed by the juniors with 72, sophomores with 66 and freshmen with 65.

In formation, the freshman were high with 88 points out of 90 possible, followed by the sophomores with 81, the seniors with 75 and the juniors with 67.

The all-important presentation, with a possible of 120 points, resulted in a nearly perfect 113 for the sophomores, 103 for the juniors, 99 for the seniors, and 95 for the frosh.

So, what is now common knowledge—namely the overall results—were achieved with grand totals of 260 points out of 300 possible for the sophomores, 255 for the seniors, 248 for the freshmen and 242 for the stream-wetted juniors.

Glee in Tune With Theme Of Novelty Forms and Songs

Hundreds of freshmen, sophomores, juniors and seniors with voices raspy from a week's use and bodies exhausted by five a.m. practices will lift their voices in anthem tomorrow in each class's song, "Destination WU," "West With a Song," "Here at Freshman Glee," and "Brother to Brother," respectively, at Freshman Glee.

MARCHING formations up the Glee bleachers in the gym will accompany the singing of these original songs. The freshmen will form a red, white and black locomotive engine with moving wheels and moving smoke which will convert to a caboose at the end of their pre-

sentation.

Sophomores, also following a travel theme, will form an outline of the continental United States and show a traveler passing from New York, to the South, through Oregon, and on to Willamette. The class will form an outline of Oregon within the US outline when the Oregon travels are depicted. Three songs in a medley will depict the traveler.

JUNIORS will follow a musical theme first forming the outline of a mandolin, then a trumpet and finally the sign of the treble cleff. All their formation will be done in black and white.

Civil rights will be the theme of the senior class's presentation dedicated to the 1954 Supreme Court ruling. Their song is a spiritual and the first formation will be a moving gavel representing the court's decision. This will be followed by a two men, one done in black, the other in white. Then they will form a school house with one man in the

doorway representing integration.

HEADING the judges is Governor Mark O. Hatfield, accompanied by Keith Anderson and Walter Erickson, who will act as formation judges. Verne Wilson and Jean Vancil will be presentation judges and John Trudeau, Robert Thornton and Lamar Bell will judge the songs.

Student Glee leader for this year is Mike Steding assisted by Roger Bergmann. Sue Lewis and Doug Simon are senior song and formation leaders. Junior song and formation leaders are Dave Bier and Don Lorenzen. Leading the sophomores are song leader Sharon Brown and formation leader, Joe Hughes. Mike Landfair and Mary Dorsch are leading the freshman class as song and formation leaders.

Over 85 per cent of the members of each class have turned out for Glee this year, estimated Manager Mike Steding. There is no significant percentage decrease among the classes as to years in participation.

Gatke Earns '63 Dedication

A large spirit of dedication demonstrated through years of service to Willamette make Dr. Robert Gatke a truly deserving recipient of of this year's Glee dedication. Dr. Gatke served as a professor of history and political science until a year ago when he assumed the position of professor emeritus.

DURING HIS long stay at Willamette he wrote the "Chronicles of Willamette University," an historical account of the development of the university.

Dr. Gatke supervised the landscaping of the campus, planting many of the shrubs and trees with his own hands. He has been on campus as a student or teacher since 1914. He took over the landscaping for President Baxter in 1934 and continued the work for about twenty years after which it was done by professionals.

DR. GATKE reminisces about the active interest of students who used to get together and replace plank walks with concrete walks, buying the materials and supplying the labor themselves.

Theme Renewed After Four Years of Freshman Glee

The 1963 Novelty Glee theme is no novelty to those who have been around long enough to recall a number of Glee's past. The last Novelty theme was carried out four years ago, March 13, 1959.

WITH THE Oregon Centennial providing a boost in spirit, the classes competed for the coveted Glee banner. When the din had been momentarily quieted, the sophomores emerged triumphant. The seniors found themselves in second place; the juniors, third; and the freshmen—into the Mill Stream. The victorious sophomores, incidentally, came back to win that year from a fourth place swim the year before.

Seventy-six seniors presented "South Sea Holiday" from a formation of bongo drums. The juniors, 90 strong, winners in their freshman year, formed an umbrella and sang "Humidity Ditty."

THE 118 ecstatic sophomores captured first place with their rendition of "This Must Be Oregon," depicted, naturally enough, by a map of Oregon in the center of which was the date 1859. The Mill Stream beckoned to 189 frosh when they sang an "Ode to Jason" after forming a tombstone with "Jason" inscribed thereon.

An addition to the Saturday night festivities of 1959 was the presentation of the senior "cut-ups" now reserved for the challenge assembly. The challenge assembly that year included class demonstrations designed to humiliate their adversaries.

From the follow-up article on Glee that year in the Collegian came this warning: "Unfortunately, a few belligerent swimmers failed to take the watery dip, which they earned by losing Freshman Glee, without pulling in a few upper classmen. Failure to accept the consequence of losing Glee in a sportsmanlike manner could bring the death of the traditional Mill Stream swim and even of Blue Monday activities."

Glee Grows With Added Age

The expansion of the tradition of Freshman Glee, taking place for the 55th time tomorrow evening, has been rapid since the first campus song contest held in Waller Hall in 1908.

THE YEARLY song challenge as begun by three members of the class of 1912, Jimmie Oaks, "Brick" Harrison and R. V. Ellis, who founded the tradition with the main rules which have endured. The song must have an original tune and words. At the first Glee the seniors presented new lyrics to the tune by the Italian composer Paganini, for which they were

awarded a head of cabbage by the usher.

In the beginning the competition was based on the merits of music and words alone, but presentation became more and more important until, in 1954, the point system was revised to give an equal 120 points for both the song itself and for the presentation.

FORMERLY, the performance had actually overshadowed the song with a total of 180 points, 60 more than was awarded for the composition itself.

As Glee's reputation grew, Waller Hall became too small to hold

the audience, and the song fest was moved to the First Methodist church. When the gym was built in 1923, there was a sigh of relief, but anyone who has fought over Glee tickets knows that even the gym has become inadequate.

THE INTEREST of the town in Freshman Glee grew until, in the early 50's, the show was broadcast over the radio. At one time it was even attempted to have the evening on television, but the crowded gymnasium offered too many technical problems.

One of the developments in the history of Glee is the establishment

of a four-year cycle, so that every class has a new topic for their song each year. This year the category is "novelty," and will be followed by "serenade," "alma mater," and "fight" in the coming years.

MANY WILLAMETTE Glee songs have become a tradition in themselves, such as "Fight, Bearcats, Fight." One of the most memorable novelty songs was "Rock That Oxcart, Jason Daddy," a look at Willamette's history from a contemporary point of view.

The tradition of Blue Monday, the time when all Glee bets are paid off, has grown until it was necessary last year to establish a committee to keep the festivities under control. Some of the bets were so zany that they have become legend, like the girl who ran through the legislature while it was in session, and swinging a red lantern, hollered "Has anyone seen an honest man?"

IN 1954, senior class president Kent Hotaling and junior class president Chuck Seagrave swallowed live goldfish to pay off their Glee bets. One year an unfortunate loser gave Dean Mark Hatfield (now Governor Hatfield) a pedicure.

One favorite trick has been clipping off professor's ties. Who was the smarter-than-the-average prof who ran a wire through the middle of his? The profs have sometimes fought the chaos of Blue Monday, and most notorious is the teacher who expelled the scantily clad students from the classroom, only to find his own son peddle in on a tricycle, wearing only shorts.

In 1909, the Glee banner was strictly improvised, having been sewed together by the Freshman class. In 1923 a traditional banner was obtained, only to be ripped to shreds by an enthusiastic winning class. Speculations are now beginning for this year's banner. Who's going to win Glee in '63?

Glee Has Merits and Faults

By GERRY BILL

Freshman Glee evokes many different reactions from Willamette students. There are those who attack it with sarcasm and ridicule, and there are those who defend it with piety and indignation. On the whole, students tend to accept Glee pretty much at face value: as a chance to get together and just have some plain good fun — for its own sake. This is the only real justification for Glee, and it is not without merit.

HOWEVER, the appeal of Glee — as fun for the sake of fun — is not universal, and the campus is consequently divided into participants and non-participants. Some of the non-participants do have valid criticisms of Glee: it does infringe upon study time, and it does seem that perhaps the effort put into it could be devoted to something more worth-while.

Many people feel that their time would be better spent elsewhere than in 30 hours of Glee practice. Furthermore, the whole thing seems rather childlike and pointless.

On the other hand, Glee does have a certain amount of value besides being just plain fun. It is the one big event of the year that brings people together in other than the standard groupings — by class instead of by living organization. Furthermore, it gives at least a few people a chance to do something creative, and it gives everybody a chance to let off steam.

IN THIS respect Glee serves the same kind of function as a panty raid; it is a tension releaser, a study break.

Glee is also valuable as an experience in group dynamics and cooperation.

In the final analysis both sides of the issue have some validity. Therefore, let those who participate in Glee do so with an aim to making the most out of it, optimizing the good points and minimizing the bad points. And let those who feel that they can put their time to better use, do so, and not merely talk about it. But let neither side categorically condemn the other.

Manager Bergmann Reports Committees Well Underway

The Freshman Glee committee headed by manager Roger Bergmann met in a general council meeting January 5. Bergmann was impressed with the attitude and profound enthusiasm and spirit with which Glee is getting started.

THE DISCUSSION at the meeting centered around Blue Monday, Glee rules and some of the different ways to make money.

Bergmann also thought it noteworthy to mention that all the committees are well under way and many of his chairmen are way ahead of schedule. A calendar schedule has been set up so that all important glee dates such as practices, meetings and deadlines can be met.

HE FEELS that this year, with the crew he has, that Glee can reach a peak of perfection and thus continue and enrich the tradition of this all-school function.

The chairmen of the committees are secretaries, Judi Moen, Nancy Hutchinson and Darlene Hawkins; programs, co-chairmen Kathy White and John Bjork; decorations, co-chairmen Kirk Ann Neil and Vicki Pitkanen; tickets, Barbara Whalin and John Erickson; entertainment, Karen Reppun and Mike Wilkens.

In charge of the souvenir edition are Leslie Minkner and Mike Aldrich; backdrop, Carol Buell and Mike Person; publicity, Ruth Yonkers and Bill Willingham; records, Bonnie Brown and Larry Tate; and stage, George Cornwall.

Seniors' Glee Theme Draws Response

Challenge to Seniors

Dear Editor:

One class presentation during this year's Glee especially took our attention and since then we have been speculating about the implications of the performance. We are speaking of the senior class and their civil rights theme. With a cautious optimism we wonder if the senior performance was a sincere profession of individual belief or merely a sentimental device certain of stimulating attention. A great number of people like to feel themselves aligned with the ideals of brotherhood but when it comes right down to individual, practical application of the ideals they profess with the group they often falter and fail however with the most intricate rationalizations in their defense.

The American Negro has stood by and observed this group "support" of his cause time and time

again and unhappily in a great number of these incidents he has also seen it fall away when it requires sacrifice or when public opposition increases. This is not intended to be an indictment against the senior class but rather a challenge to them and to all others on our campus who are concerned with the civil rights battle taking place in our nation to hold firm. It is an appeal to them to believe in brotherhood to the extent that they are willing to take whatever positive action is available to them in its behalf whether or not the group is doing it.

Recently those of us closely associated with the fund drive for CORE following James Farmar's address on campus observed a strange phenomenon. When the appeal was made with the complete absence of pressure to contribute to CORE's program virtually nothing happened. In fact, the drive was a complete failure. How is this

to be explained after Mr. Farmar received a standing ovation following his speech? The contributions when averaged with Willamette's enrollment turned out to be 2½ cents per person! Here was an opportunity for all those interested to give material support to one of the most vigorous civil rights organizations in the country and the campus stood silent. Will this same deterioration of an admirable profession of belief creep in and destroy what the senior class has said after the passage of a little time?

Richard Payne
Marcia McAdoo

Theme Refreshing

To the Editor:

Congratulations on this year's Freshman Glee, especially to the class of '63: "Then felt I like some watcher of the skies/When a new planet swims into his ken," for I felt not only the thrill of watching a presentation valuable in itself but of watching the seniors blow the breath of life into what was becoming a decadent tradition.

If other classes have what it takes to follow in the Glee footsteps of the class of '63, there'll be new life in the old tradition yet.

By the way, is the tradition of the seniors' fly-specked signs sacred?

Beatrice L. Bliss, '29.

'63 Glee Judges Announced, Will Score Three Categories

Once again Governor Mark O. Hatfield will step out of his gubernatorial shoes for an evening to help in the judging procedure at the 54th annual Freshman Glee competition. His will be the responsibility for judging the formations. Assisting him will be Keith Anderson and Walter Erikson.

Robert Thornton will help in the judging of words and music with Lamar Bell, choral director at Tigard high school, Portland. Vern Wilson and Jean Vancil will cooperate in the judging of presentation. The names of other judges who will participate in the judging procedure were not available.

Judging will be divided into the three categories enumerated above. Music will count 20 points, words 20 points, and presentation 60 points. The latter will be subdivided into formation and vocal rendition.

Dr. Daniel Schultze, the old time master of suspense will announce the winning Glee class at the completion of judging. Dr. Schultze has seen 38 years of Glee competition as a faculty member of Willamette University.

Some adroit stalling is expected from him as he has improved his stalling techniques for the last 9 years and in this, his 10th, is expected to keep all participants waiting with bated breath for his announcement of the winning class.

Deadline Set for Glee Plans

Novelties is the theme for this year's Freshman Glee. Plans are well under way due to the leader-

ship of Glee manager, Mike Steding. The challenge assembly scheduled for February 28 will initiate the class competition to be climaxed by the songfest Glee night, March 9.

Glee rules are now available in all living organizations. All songs must be turned into the alumnae office no later than February 23. Tentative formations are due February 19 with final plans in by February 28.

Traditional class practices start March 4 and will continue through the week, each class taking its turn at the dreaded 5 a. m. hour as well as at other intervals during the day.

Blue Monday, March 11, will find the winners all smiles as they watch the losing class pay off bets and wade the chilly Mill Stream.

Professors Reminisce About Glee

Willamette's unique tradition of Freshman Glee provides veteran professors with rich memories of past outstanding performances.

DR. PAUL Trueblood can look back on Glee both as a professor and a Willamette student. He graduated from WU with the class of '28. "Of all the wonderful memories of my undergraduate days at Old Willamette, the most treasured is Freshman Glee. It was what students today would call the best 'fun time.' And when my class won Glee in our freshman year, we thought (whether we were correct or not—ask Dr. Gatke) that it was the first time freshmen had won, and anyway we acted like it!"

"WE NEVER quite recovered or got over that thrilling, ecstatic achievement. For that matter, we never have! This coming commencement my classmates and I will enjoy our 35th class reunion. And there's one thing you can be sure we will talk about as we gather from parts as far away as New York and South Africa and that it—How we won Freshman Glee in our freshman year!"

DR. ROBERT Gatke, retired professor and graduate of WU, recalls the evolutionary process at work in Glee.

"For many years the Glee has filled the gym to capacity and people have been begging for tickets. It seems strange to recall the first Glee of my student years when the chapel in Waller Hall was used for Glee.

CROWDED OUT of the chapel we went to the First Methodist Church and then to the Salem Armory. When the present gym was built 40 years ago the Glee was able to return home to the campus where it belonged.

To one who has known the Glee for some 48 years, there is a certainty of many changes but it is hard to put the finger on the time when the changes took place. I recall that parodies played no part in early Glee. At chapel time on Monday after Glee—in the days of

daily chapels—the classes would sing their songs in the order of their ranking by the judges.

MY CLASS of 1919 in its senior year felt very daring in substituting a parody for their song which had been more appreciated by the class than by the judges. Not parodies but Glee songs of earlier years were used before the Glee was under way and during the waiting for the decision.

Glee preparation stretched over many weeks instead of being crowded into one hectic week. So changes have been ever with us and yet Glee retains a rich heritage of Willamette traditions."

DR. C. HERBERT Smith, president of Willamette University for over 20 years, treasures many Glee remembrances.

"In 21 years there are many Glee which are outstanding in my memory. I am sure that the first time anyone experiences Freshman Glee it is the most vivid memory. I particularly remember the Glee in the spring of 1943. This was my first Glee. It came during the tensions of the war period and for many reasons I believe it was the most outstanding in my mind.

"IN GENERAL I prefer the Glee with the Alma Mater theme because of the songs which are produced. From the standpoint of excellence of marching and formation, there are no years that compare with the war years when the Navy was on the campus.

"During the forties and early fifties Glee had a dignity about it which added much to the enjoyment for all who attended. The loss of this quality almost endangered the very existence of Glee and I was glad to see positive action taken last year to return some dignity to the presentation of Glee."

DEAN ROBERT Gregg stated that "the 1955 Glee stands out in my mind above all others. This was the year that the frosh dipped into the rich heritage upon which our University rests. Jason Lee provided them their inspiration for the catchy song 'Jason Daddy,' one of the Glee songs that will never be forgotten and that you still hear sung today.

"I FELT that the historical perspective that the song displayed added to the atmosphere of Glee and fitted in with the spirit of the early pioneers as these students expressed this spirit.

Their formation involved a prairie schooner complete with wheels that turned and they all dressed in the costumes of that era. It was very colorful and the beautiful solo by Pete VanHorn was very touching."

DR. SCHULZE, whose prolonged, tortuous announcing of Glee winners has been a legend for years, had this to say:

"As I think of past Glee I am

reminded of the custom of the senior class appearing in cap and gown for their first public appearance and the spontaneity of the singing prior to the actual contest, rather than the present planned parodies.

"And who can forget the inimitable manner in which the late Dr. Matthews announced the winner, and after him Professor Emeritus Clark!"

DR. WILLIAM P. Baker, a more recent addition to Willamette's faculty, reacts to the unique institution of Freshman Glee with the following evaluation:

"Freshman Glee is not likely to provide grist which some latter day Wagner will grind into another Meistersinger, but Glee is more im-

portant for those of us at Willamette—and possibly just as far reaching in its cultural implications, at least for us.

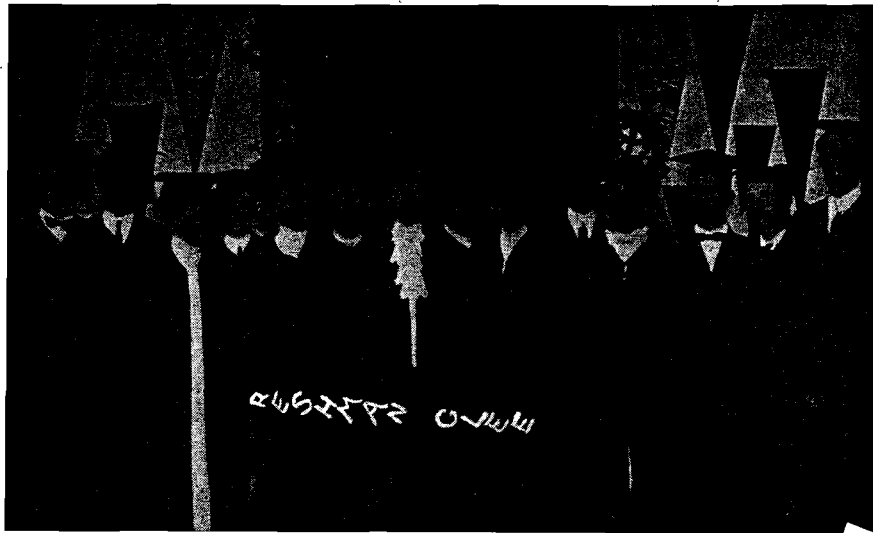
"FOR ONE thing, it is indignant and, in tone and spirit, unique. Many students who have never before experienced the joy of creating either as individuals or as groups, have an opportunity in Glee to experience both those elemental joys; and the incandescence which the experience produces usually makes the person better and, I believe, more appreciative of the more lofty art which Michaelangelo, Milton and Mozart have created.

"Because the students write the songs and invent the continuity and the choral work, they avoid the banality and the contrived, planned

"rigged" pitfalls of many College group activities—group song contests, for example, or the thoroughly artificial 'freshman sneaks' which the fraternities stage and then use as a phony introduction to the initiation routine whose chief function is to make the individual pledge mistrust himself.

"GLEE TENDS to make students trust their own efforts and respect those of their fellow students.

"Another value which Glee has is to persuade students that the arts, and hard work to achieve them, can be a great deal more satisfying than the 'social adjustment' exercises which mark most of the social events of campus life here and elsewhere."



Saturday night marks the 55th anniversary of Freshman Glee. In this picture, taken in connection with the 25th Glee, James Oakes, third from the right, with the assistance of K. V. Ellis, is credited with founding of this worthy event. The winners of this class of 1912 had 14 sophomore participants.

Class Prexies Challenge Opponents

With Freshman Glee fast approaching on March 9, the classes have now formally issued challenges. Verbal jibes were offered in yesterday's challenge assembly while the following statements represent class policy as disclosed by each president for publication.

Freshmen's Glee

By DOUG McNISH
Freshmen

Although four classes are participating in Glee, there are only three in strong contention. The Freshmen have an obvious and undisputed first, thus, we are omitted from the real fight. Preparations have already been made to change the wording on the banner to "Freshmen's Glee." It will be an extremely close race for fourth, however, and this shall be the center of the main conflict.

So far in their Glee career, the Seniors have had a first, a second, a third, and who knows how many "fifths?" Of course they hate to leave Willamette without getting as much out of it as possible; therefore, the Seniors will attempt to steal fourth from the juniors and sophomores this year.

The juniors are looking forward to the Blue Monday Assembly. They believe their stage experience on Monday after the Homecoming game leaves them most qualified for a fourth place victory. Judging

by that assembly and their spirit at the game, the juniors have evaluated themselves well. They are indeed well qualified for a fourth.

After only one year at Willamette the Sophomores are already experienced at Mill Stream strolling. They captured the coveted fourth place position last year and think it their duty to do it again this year. I think if the Sophomores substituted the word "destiny" for the word "duty" they would have a more realistic view of the situation.

Good luck! upper classmen on your struggle for fourth place — You all deserve it.

Pattern Emerges

By CHUCK FLYNN
Sophomores

Looking over the last several years of Freshman Glee competition, a very distinct pattern emerges. In fact, after looking at history, a person necessarily reaches the conclusion that the sophomore class will rise to the summit of glory.

This has happened for the two previous years, and considering the immeasurable superiority of the present sophomore class to any that has gone before it, or any that will follow, the victory of the class of '65 is absolutely assured.

The juniors, their rabbits feet and four leaf clovers completely exhausted from the supreme effort which

brought them their victory last year, will still be a potent force to be reckoned with.

The seniors, now that two years separate them from glory, have forgotten the secret which once brought them victory. I would predict a sorry third for the class of '63.

But the greatest humiliation of all awaits the lowly frosh. Without even the guide of experience they will plummet to the depths of despair (and of the mill stream) and finish a distant fourth.

It must be obvious to all discerning minds, after this historical analysis, that the only possible victor is the class of '65.

Uncle Tony Tells

By GARY McKENZIE
Juniors

In order to help the Sophomores and Freshmen understand what will be happening at Freshman Glee (it was obvious that neither class knew anything at all about this event) the Junior class presented a few of the highlights to watch for in this year's Glee at yesterday's challenge assembly. An excerpt from the seniors' proposed theme, "Uncle Tony's Cabin" was done.

As a rather noble gesture, the Juniors refrained from displaying their talent in an effort not to demoralize the other classes. Instead

they thoughtfully gave the Sophomores a glimpse of the Glee banner and expressed their sorrow that the class of '65 will never win it.

After a demonstration of the organization and grace of the Freshman class, junior president McKenzie expressed his surprise that the class of '66 would have the nerve to challenge anyone. Regarding '63, the Juniors accepted the challenge with a request that the Seniors try to do a little better this year.

Seniors Select

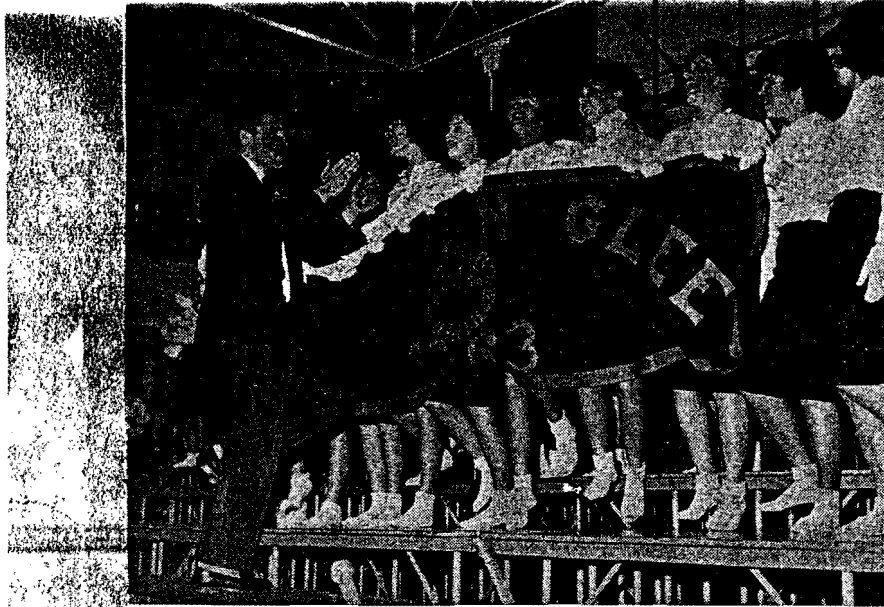
By TONY GOOD
Seniors

Yawn . . . yeh, we accept the challenge . . . ho hum. The above

drivel almost put me to sleep, although it did get kinda exciting there when all three underclass groups won first place.

We (the Seniors) had a little academic chat the other day . . . nothing new you understand . . . and decided that after objectively looking at all of the top three positions, first place had the most to offer. Like man, 2 o'clocks around here are almost as rare as centennials! So, we're going to win it . . . yawn.

We had a little warmup session at Homecoming this year (the game, guys!) reeking in . . . ar reeling in the spirit (yesh shir) award and hence have acquired a thirst for first. And with our jag, it's in the bag!



Victorious sophomore women display enthusiasm behind this year's Freshman Glee banner as they sing the winning song, "West With a Song," for their formation leader Joe Hughes. The sophomores, who last Glee last year, skyrocketed

to first place, and were replaced at the bottom of the totem pole by the juniors, who captured last year's Glee banner. Blue Monday saw the losing juniors paying off their various bets on campus; after their parody assembly they marched



behind "the cross of Gregory" to the cold Mill Stream. After a blessing by John "the Baptist" Vaagen, they cavorted in the water to fulfill the duties of the losing class.

Blue Monday Is Well Named With Cold Water, Odd Bets

The traditional Blue Monday at Willamette, described in a local paper as an eruption of the "silly season," presented students with the opportunity to keep their words and pay off Glee bets. It was nearly disastrous for some who still maintain souvenirs such as shaved legs and heads, as well as runny noses for the juniors.

THE SOPHOMORE class reigned while juniors took to the millstream. As usual, there were many students swimming who started as observers. Before their swim the juniors entertained the student body in an assembly which presented Glee 1963 from their point of view, emphasizing the minor goofs which occur in each song, as well as parodying the other classes.

Several bets were also paid off during the assembly including the molasses-and-feathering of John Ryan, student body treasurer, and unfortunate senior. One bald-headed loser was required to kiss every girl in the sophomore class in payment for his loss.

DURING THE day students stood in front of Eaton catching the traditional raw eggs tossed from the third floor. One boy "marched" to class on roller skates, accompanying himself on a drum. Several others took shifts riding a skateboard on their backs, carrying the necessary books on their stomachs.

Another junior, a Lausanne counselor, initiated Dr. Lovell into the Turtle Club and took up the period explaining why her class lost Glee.

The participants, although many ended the day exhausted and cold, will add this year's Blue Monday memories to others of their Alma Mater.

S
'P

Losers Colonize

Four Glee bet losers, John Ryan, Nick Tibbitts, John Drummond and Rich Buck, spent a cold Blue Monday eve in their version of Tent City in the quad in front of Doney Hall. Joined by their Kappa Sig fraternity brothers for their evening, they entertained themselves by serenading the Doney girls, Lausanne and Alpha Phi's, roasting marshmallows over a kerosene stove, and setting up their tent and equipment.

They nominated Janet Potter, freshman Doney Hall, to be their housemother, but "due to circumstances beyond the Tent City Citizens' control she was unable to remain for the evening." At 5 a. m., the following morning, they helped the Doney girls, and most of the west side of campus, get to class on time by blowing a loud reveille twice.

Jim Myraskiro, Herb Munson, and Dave Arbuckle, sophomores were the winners of this unusual bet.



Could this be our illustrative sports editor? Why has he suddenly taken to feminine apparel? Of course any resemblance to the best dressed coed on campus is purely coincidental. Looks like the society editor wasn't the only one to lose! (Photo by Burr Baughman)

Sophs At WU 'Glee' Winners

WILLAMETTE UNIVERSITY, Salem (Special) — The class of 1965 (sophomore) won the annual Willamette University Freshman Glee competition Saturday with a point total of 260.

The Glee has been staged since 1908 and is thought to be unique among college traditions in the U.S. Competition involves vocal renditions, 120 points, marching and formation, 90 points and "words and music" with a possible 90 points.

Second place winner Saturday was the class of 1963 with a 255 point total, third place went to the class of 1966 with a total 248 and last place to the class of 1964, point total unannounced.

The Glee was to be followed by the traditional "Blue Monday" at which the losing class was to be tossed in the mill race, according to a university spokesman.



A Glee manager's job isn't all sweat and toil, as Roger Bergmann checks the legs of all Glee inspired freshman coeds. Apparently Carol Archibald, Marian Gilmore and Joyce Badger (right to left) passed inspection. Only six coeds had runs in their stockings, but they still passed the test for Mill Stream trekking. (The frosh aren't overlooking all possibilities.) (Photo by Burr Baughman)

Freshman Glee Practice Schedule 1963

Monday, March 4

5:00- 7:00 Frosh _____ Gym
 12:00- 1:00 Frosh _____ L. T.
 Soph _____ Gym
 Juniors _____ Waller
 Seniors _____ Choir
 4:00- 5:00 Frosh _____ Waller
 Soph _____ L. T.
 Juniors _____ Choir
 Seniors _____ Gym
 6:30- 9:30 Frosh _____ Choir
 Soph _____ L. T.
 Juniors _____ Gym
 Seniors _____ Waller

Tuesday, March 5

5:00- 7:00 Soph _____ Gym
 11:00- 1:00 Frosh _____ Choir
 11:00-12:00 Soph _____ L. T.
 Juniors _____ Gym
 Seniors _____ Waller
 4:00- 5:00 Frosh _____ L. T.
 Soph _____ Waller
 Juniors _____ Choir
 Seniors _____ Gym
 6:30- 9:30 Frosh _____ Gym
 Soph _____ L. T.
 Juniors _____ Choir
 Seniors _____ Waller

Wednesday, March 6

5:00- 7:00 Juniors _____ Gym
 12:00- 1:00 Frosh _____ L. T.
 Soph _____ Waller
 Juniors _____ Choir
 Seniors _____ Gym
 4:00- 5:00 Frosh _____ Choir
 Soph _____ Gym
 Juniors _____ Waller
 Seniors _____ L. T.

6:30- 9:30 Frosh _____ Gym
 Soph _____ Choir
 Juniors, Recital Hall
 Seniors _____ L. T.

Thursday, March 7

5:00- 7:00 Seniors _____ Gym
 11:00-12:00 Frosh _____ Gym
 12:00- 1:00 Soph _____ Waller
 Juniors _____ Choir
 Seniors _____ L. T.
 4:00- 5:00 Frosh _____ L. T.
 Soph _____ Choir
 Juniors _____ Gym
 Seniors _____ Waller
 6:30- 9:30 Frosh, Recital Hall
 Soph _____ Gym
 Juniors _____ Choir
 Seniors _____ L. T.

Friday, March 8

5:00- 7:00 Soph _____ Gym
 12:00- 1:00 Frosh _____ Choir
 Soph _____ L. T.
 Juniors _____ Gym
 Seniors _____ Waller
 4:00- 5:00 Frosh _____ Gym
 Soph _____ Waller
 Juniors _____ Choir
 Seniors _____ L. T.
 6:30- 9:30 Frosh _____ L. T.
 Soph _____ Waller
 Juniors _____ Choir
 Seniors _____ Gym

Saturday, March 9

5:00- 7:00 Frosh _____ Gym
 8:30- 9:30 Soph _____ Gym
 9:45-10:45 Juniors _____ Gym
 11:00-12:00 Seniors _____ Gym

Cold, Wet Walk Penance for WU Juniors



■ Scores of junior classmen of Willamette university at Salem took this cold, wet walk in campus mill stream to the delight of hundreds of onlookers. Their

action was as penance for losing school's annual Freshman Glee last Saturday, one of the university's outstanding traditional events.

AP WIREPHOTO

Novelty Theme Glee Dedicated To Professor Emeritus Gatke

The announced theme for Freshman Glee 1963 is Novelty. A challenge assembly kicking off the Glee program was issued yesterday by the freshman class at convocation.

NEW ADDITIONS have been made this year to the Glee format including a lineup of 25 Saxonettes from South Salem High to serve as usherettes. Additionally the souvenir edition of Glee will be expanded from 8 to 12 pages to give more complete coverage of Glee activities.

Dr. Robert Gatke, who retired from the teaching profession last year, will receive this year's dedication. He has been in school or teaching at Willamette since 1914 and presently holds the title of professor emeritus.

THE RULES regarding tickets for Freshman Glee have now been established. Each student will receive one ticket. Students must present their student body cards to obtain tickets. Tickets will be distributed Monday, March 4, in Eaton Hall between 9 a. m. to 4

p. m. March 4 will be the only day of ticket distribution. Tickets are transferrable.

All persons who are not participating in Glee must present their tickets at the door for entrance. The ticket holder must sit in the section marked with the color of his ticket. Freshman tickets will be red, sophomore tickets blue, junior tickets yellow and senior tickets green.

Participants in Glee are not required to have a ticket but are encouraged to obtain one so that they may invite someone to Glee or give the ticket to someone who needs more than one.

Freshman Glee Rules - 1963

1. The theme of the 55th Glee shall be Novelty
2. Each class president will act as representative to the Executive Glee Committee. They shall work in conjunction with the ticket committee in distributing tickets to his class. The remainder of the voting Executive Glee Committee will be made up of class song and formation leaders, the student body Treasurer, Glee secretaries, past Glee Managers, and the present Glee Managers.
3. Judging of Glee shall be as follows:
 - Words and Music: Judged together. There will be three judges with thirty points a piece with a grand total of 90 points possible.
 - Vocal Rendition: There will be four judges with thirty points a piece with a grand total of 120 points.
 - A. Tone quality - 10 points
 - B. Diction - 10 points
 - C. Expression - 10 points
 - Formation: There will be three judges with thirty points a piece and a grand total of 90 points.
 - A. Execution - 20 points
 - B. Adaptability - 10 points

All judges, except the ones judging music and words will be required to attend the night of Glee.
4. Any uniforms used by the participating classes will count no more than their neatness and uniformity contribute to the judging of the song and formation.
5. Glee will be presented with one basic formation in each class. Minor changes that will not alter the size, shape, or theme of the original formation while singing, may be used. However, to eliminate any dissension in regard to what constitutes a major or minor change, the following procedure will be followed:
 - A. A tentative formation must be turned into the Freshman Glee Manager by Wednesday, February 20, 1963.
 - B. A final draft, with explanation in writing must be submitted in its entirety to the Glee Manager by 5:00, February 28, 1963.
 - C. Participants shall not change their relative position during the singing of the song. The Executive Glee Committee shall be the final authority on what constitutes such changes.
 - D. There will be no more than three formations used by any one class during its presentation.
 - E. All participants in the formation must march, or count time, until the formation is completed.
 - F. After the formation is complete, the participants may stop but for no more than 10 seconds. This time will be determined by the judges.
 - G. The entire formation must participate in the presentation of the song. From 10% - 12% or 1/3 of the class must be singing at all times.
6. ~~The title of~~ Six copies of the words and music must be submitted to the Alumni office by 4:00, February 22. The composition must be written on standard score sheets and must include words, melody line, and piano accompaniment. One of the seven copies must be in black india ink. It is recommended that the other six copies be photostated. The title of the song must appear on each score. The name of the song, class, and person(s) writing the words and music will appear on a separate piece of paper to be handed in at the same time. The words must be typed and no changes in the words or music can be made after they have been submitted.
7. No stage properties, nor change in appearance of wearing apparel is permitted. A stage property shall be any item other than their original costume.
8. The songs will be sung in order from seniors to freshman.

9. Parodies will be sung before the competition. They will be sung in sequence from freshmen to seniors; one or two parodies depending on the time element.
10. The wearing of caps and gowns by the seniors when entering the gym shall be left to the discretion of said seniors.
11. March 4, 12:00 noon, a completed alphabetical list of participating class members of each class must be submitted to the Alumni Office by the class president. Names of additional participants may be submitted to the Glee Manager until 5:00, Thursday, March 7, providing they have been cleared by the Dean.
12. No class will hold a practice before Monday, March 4. The gym will not be available before that date. There shall be no extra practices for any class or any portion thereof during Glee Week; March 4 to March 9. Scheduled practice time may be used by the class in any way they feel is the most beneficial to them. (A practice shall be defined as consisting of 10 or more persons).
13. Since so many guests visit the campus for Freshman Glee, the events of the evening should reflect good taste on the part of the students.
14. The Executive Glee Committee and student senate will be the ultimate arbitrating authority with regard to #13.
15. If there are any violations by classes of the rules concerning Freshman Glee the executive committee will be the evaluator of the offense and prescribe the penalty.
16. For the Blue Monday regulations, see Blue Monday Rules.

Monday,
March 4

5:00-7:00	Frosh	Gym
12:00-1:00	Frosh Soph Juniors Seniors	L.T. Gym Waller Choir
1:00-5:00	Frosh Soph Juniors Seniors	Waller L.T. Choir Gym
6:30-9:30	Frosh Soph Juniors Seniors	Choir L.T. Gym Waller

Tuesday,
March 5

5:00-7:00	Soph	Gym
11:00-1:00	Frosh	Choir
11:00-12:00	Soph Juniors Seniors	L.T. Gym Waller
1:00-5:00	Frosh Soph Juniors Seniors	L.T. Waller Choir Gym
6:30-9:30	Frosh Soph Juniors Seniors	Gym L.T. Choir Waller

Wednesday,
March 6

5:00-7:00	Juniors	Gym
12:00-1:00	Frosh Soph Juniors Seniors	L.T. Waller Choir Gym
1:00-5:00	Frosh Soph Juniors Seniors	Choir Gym Waller L.T.
6:30-9:30	Frosh Soph Juniors Seniors	Gym Choir Recital Hall L.T.

Thursday,
March 7

5:00-7:00	Seniors	Gym
11:00-12:00	Frosh	L.T.
12:00-1:00	Soph Juniors Seniors	Waller Choir L.T.
1:00-5:00	Frosh Soph Juniors Seniors	L.T. Choir Gym Waller
6:30-9:30	Frosh Soph Juniors Seniors	Gym Recital Hall Choir L.T.

STUDENT COUNCIL (1954-55)

Friday, March 8	5:00-7:00	Soph	Gym
	12:00-1:00	Frosh	Choir
		Soph	L.P.
		Juniors	Gym
4:00-5:00	Seniors	allor	
	Frosh	Gym	
	Soph	allor	
	Juniors	Choir	
6:30-9:30	Seniors	L.P.	
	Frosh	allor	
	Soph	Choir	
	Juniors	Gym	
Seniors			

Saturday, March 9	5:00-7:00	Frosh	Gym
	8:30-9:30	Soph	Gym
	9:45-10:45	Juniors	Gym
	11:00-12:00	Seniors	Gym



MARK O. HATFIELD
GOVERNOR

OFFICE OF THE GOVERNOR
STATE CAPITOL
SALEM 10, OREGON

February 19, 1962

Dear Mike:

Thank you for your letter and for the thoughtful invitation you have conveyed on behalf of your Executive Committee.

I shall be delighted to serve as one of the judges at Freshman Glee, and shall be looking forward to the pleasure of this occasion with considerable anticipation.

Many thanks and kindest regards.

Sincerely yours,

Governor

Mr. Mike Steding
Freshman Glee Manager
Willamette University
Salem, Oregon

MOH:be

ASSOCIATION OF STUDENTS

WILLAMETTE UNIVERSITY



PRESIDENT: BOB ELDER
FIRST VICE-PRESIDENT: DIANE HUNNEX
SECOND VICE-PRESIDENT: GENE JUVE
SECRETARY: CORKY DEMLER
TREASURER: JOHN RYAN
MEMBER AT LARGE: GAYLE EMERSON

February 6, 1963

Mr. Robert Thornton
Silverton High School
Silverton, Oregon

Dear Mr. Thornton

Now that February and March are here, the Willamette University campus is becoming involved in one of the biggest events of the year--Freshman Glee. Every year since 1908 the Freshman class has challenged the other classes to compose a song and present it on the evening of Glee. "Novelty" is the theme of this year's Glee which will be held on March 9.

Many long hours are put in by each class in producing its song and accompanying formation. Once this is accomplished, the classes must practice their songs and formations for approximately five hours a day for a week. The final production is judged on words, music, adaptability to the theme, formation, and presentation. The winning class will receive the cardinal and gold Glee banner for 1963, while the losing class will look forward to a Blue-Monday romp through the Mill Stream.

The Executive Committee would like to ask your assistance in judging the words and music. For this, you need not be present, unless you wish to be. We would appreciate a reply to our request as soon as possible. If you decide to be a judge, the words and music will be sent to you by February 28. Since Glee is March 9, we would like to have the music scores, as well as your tally of points, returned by March 6.

Glee is an entirely non-profit endeavor so we cannot offer you a monetary reward for your assistance. But we will send you two tickets to Glee so that you may be a part of the great Willamette tradition.

Sincerely,

Mike Steding
Freshman Glee Manager

Freshman Glee Executive Board
Willamette University
Salem, Oregon
January 14, 1962

Dr. Daniel H. Schulze
Willametty University
Salem, Oregon

Dear Dr. Schulze,

The Executive Board of Freshman Glee of 1963 would like to invite you to present the banner to the winning class on the evening of March 9, 1963 at eight o'clock. Willamette has enjoyed having you do the honors in the past and we would appreciate your doing it again this year.

Sincerely,

Roger Bergmann
Chairman, Freshman Glee

RAB:neh

ASSOCIATION OF STUDENTS

WILLAMETTE UNIVERSITY



PRESIDENT: BOB ELDER
FIRST VICE-PRESIDENT: DIANE HUNNEX
SECOND VICE-PRESIDENT: GENE JUVE
SECRETARY: CORKY DEMLER
TREASURER: JOHN RYAN
MEMBER AT LARGE: GAYLE EMERSON

February 15, 1963

Mr. Walter E. Erikson
Madison High School
Portland, Oregon

Dear Mr. Erikson,

Freshman Glee is here again and we, the Executive Committee, would like to invite you to participate in judging the formation. The theme this year is "Novelty" and the date is March 9.

If it is convenient for you to assist us we would appreciate hearing from you as soon as possible, and we will then mail you two tickets. Thank you very much for your consideration.

Sincerely,

Mike Steding
Freshman Glee Manager

MCS:neh

ASSOCIATION OF STUDENTS

WILLAMETTE UNIVERSITY



PRESIDENT: BOB ELDER
FIRST VICE-PRESIDENT: DIANE HUNNEX
SECOND VICE-PRESIDENT: GENE JUVE
SECRETARY: CORKY DEMLER
TREASURER: JOHN RYAN
MEMBER AT LARGE: GAYLE EMERSON

March 4, 1963

Mr. Walter E. Erickson
Madison High School
Portland, Oregon

Dear Mr. Erickson

Thank you for your quick response to our letter. Enclosed you will find two tickets to Freshman Glee. The program will start at 8:00 in the Willamette Gymnasium so it would be appreciated if you would be a few minutes early. We hope you enjoy Glee as much as we've enjoyed putting it on.

Thank you so much for consenting to help us.

Sincerely,

Mike Steding
Freshman Glee Manager

MCS:neh

SCHOOL DISTRICT No. 48

BOARD OF DIRECTORS

KARL F. NEUPERT
JOHN M. BARNES
ERMA MAUST
THOMAS HARTUNG
GERALD GRAY
HARRISON T. PLATT
BLAIR N. PREUSS

WASHINGTON COUNTY
BEAVERTON, OREGON

PHONE: CYPRESS 2-3526

THOMAS E. WOODS
SUPERINTENDENT-CLERK

ERROL HASSELL
DEPUTY SUPERINTENDENT-CLERK
BUSINESS MANAGEMENT

HARVEY HARRIS
ASSISTANT SUPERINTENDENT
CURRICULUM AND INSTRUCTION

February 12, 1963

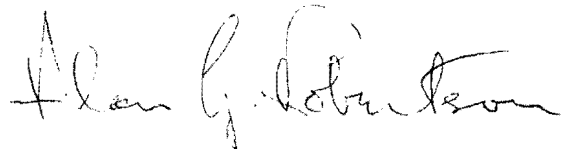
Mr. Mike Steding
Freshman Glee Manager
Willamette University
Salem, Oregon

Dear Mr. Steding:

I am honored to be considered as a judge for this year's Freshman Glee, but I am sorry, I must decline because of a previous judging commitment in Washington on that day.

I hope I may be of service in the future.

Sincerely,



Alan G. Robertson
Music Coordinator

AGR/jh

ASSOCIATION OF STUDENTS

WILLAMETTE UNIVERSITY



PRESIDENT: BOB ELDER
FIRST VICE-PRESIDENT: DIANE HUNNEX
SECOND VICE-PRESIDENT: GENE JUVE
SECRETARY: CORKY DEMLER
TREASURER: JOHN RYAN
MEMBER AT LARGE: GAYLE EMERSON

March 1, 1963

Mr. Robert Thornton
Music Department
Silverton High School

Dear Mr. Thornton,

Thank you very much for your quick response. Enclosed you will find the complete scores of music from each class. Also enclosed is a tally which you will fill out according to your judgement on the songs. The songs should be judged according to originality and adaptability to the theme, "Novelty." You will also find included two tickets for Glee and we would be honored to have you attend although your part as judge will be completed before March 9.

It is necessary that we have the scores and ballot returned by March 7. Thank you very much for all your help.

Sincerely,

Mike Steding
Freshman Glee Manager

MCS:neh

Febr 27/3

Mike Steding Mgr.

Dear Mike:

Thank you for asking me to help judge the famous acts of glee. (I hope you will ask me again some year when I shall be able to respond)

How come your letter dated Febr. 15 reached me a week later (after I had a previous commitment?)

I do hope - another judge not too hard to secure. It is a priviledge to be asked — and in Oregon I trust it is quite apropos to ask you for a rain check with every declination.

As Ever,

Sorry,

Mrs. Ruth E. Halverson
4559 N. E. 39th Ave.
Portland 11 Ore.

Union High School Dist. 7-J

BOARD OF DIRECTORS
EDGAR TWEED
CHAIRMAN
FRED SCHWAB
JOHN SIEMS
ROBERT HUMPHREYS
FELIX WRIGHT

MARION AND CLACKAMAS COUNTIES
SILVERTON, OREGON

NELLIE WATSON
CLERK
MURL ANDERSON
PRINCIPAL
MILT BAUM
SUPERINTENDENT

February 13, 1963

Mike Steding
Freshman Glee Manager
Associated Students
Willamette University

Dear Mr. Steding:

Your Freshman Glee event sounds very interesting
and makes me reminisce just a little bit.

I feel honored that my assistance should be
asked to help with the judging and warmly accept
your offer.

Sincerely,



Robert N. Thornton
Music Director
Silverton Union High School
Silverton, Oregon



PORTLAND PUBLIC SCHOOLS

631 NORTHEAST CLACKAMAS STREET
PORTLAND 8, OREGON

CURRICULUM DIVISION

February 14, 1963

Mr. Mike Steding
Freshman Glee Manager
Associated Students
Willamette University
Salem, Oregon

Dear Mr. Steding:

Thank you for your invitation to be a judge for the 1963 Willamette Freshman Glee. I will be very happy to serve as one of your judges. I have known of the Freshman Glee for many years; in fact, I participated in the Glee as a student at Willamette, so that I will have a double interest in this year's Glee.

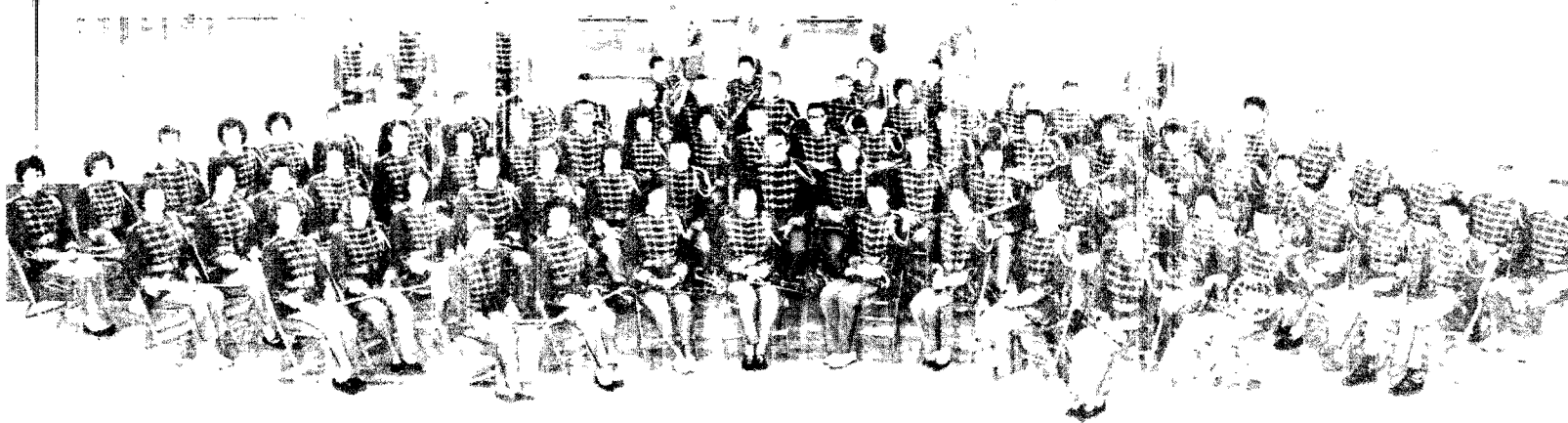
Again, thank you for your invitation.

Sincerely yours,

A handwritten signature in cursive script, reading "A. Verne Wilson".

A. Verne Wilson
Supervisor of Music

AVW: jp



TIGARD SENIOR HIGH SCHOOL BAND
LAMAR BELL, DIRECTOR
TIGARD, OREGON

Dear Mike:

Received your letter regarding serving as Judge of your Freshman Glee. I would be very glad to serve as judge in this event. Having had students who participated in Freshman Glee in the past I know it is a very nice event and will try to be present for it. If you will, send me the scores I'll do my best for you.

Sincerely,
Lamar Bell

2400 S.W. 121st

Tigard, Oregon

Feb. 15, 1963

Nike Steidig

Freshman Jee Manager

Williamette "U"

Salem, Oregon

Dear Nike:

It was a pleasant

surprise to hear from you
in regard to Freshman Jee. I

have been a judge several

times before, and it will be my

pleasure to be one again.

Having ~~not~~ ^{un} previous circum-

stances, I'll be there. I am

and will meet in the time, but I

assume 8 P.M. is the hour.

Thanks you for writing

me. Sincerely,

(Mrs. O.H.) Sears A. Vanild



PORTLAND PUBLIC SCHOOLS

MADISON HIGH SCHOOL
2735 NORTHEAST 82ND AVENUE
PORTLAND 20, OREGON

OFFICE OF THE PRINCIPAL

February 18, 1963

Mr. Mike Steding
Freshman Glee Manager
Associated Students
Willamette University
Salem, Oregon

Dear Mike:

I shall be pleased to participate in judging the formations at Freshman Glee on March 9.

The Glee has been a source of real enjoyment for me as a spectator for many years, but I suppose it is about my turn to accept some of the more "hazardous aspects" of the program.

Sincerely,

A handwritten signature in cursive script, which appears to read "Walter E. Erickson".

Walter E. Erickson, Principal
Madison High School

WEE:ms



PORTLAND PUBLIC SCHOOLS

WILSON HIGH SCHOOL
1151 SOUTHWEST VERMONT STREET
PORTLAND 19, OREGON

OFFICE OF THE PRINCIPAL

Dear Mr. Steading,
I am interested in
Your kind offer to Judge the Freshman
Glee.

What hours do you want us
to arrive on the scene. I teach on
Saturday A.M. but will be glad to help
if my hours are not in conflict with
your schedule.

Sincerely,

Keith Anderson

GLEE - 1963

PRESENTATION

<u>CLASS</u>	<u>TONE QUALITY</u> 10 Points	<u>DICTION</u> 10 Points	<u>EXPRESSION</u> 10 Points	<u>TOTAL</u>
<u>SENIOR</u>	7	7	7	-
<u>JUNIOR</u>	10	9	8	27
<u>SOPHOMORE</u>	9	10	10	29
<u>FRESHMAN</u>	6	8	7	21

In awarding points in each division, one class must receive total points. The classes under the top class may receive points anywhere from zero (0) to the full amount.

1. Please sit in your reserved section.
2. Please award points at the completion of each performance.
3. Have your ballot completed within five minutes after the Glee songs have been presented so that your ballot can be collected as soon as possible.



Judge's Signature

Section 2

H

WORDS AND MUSIC

30 Points Possible For Each Class

CLASS	TOTAL POINTS
Freshmen	18
Sophomores	22
Juniors	24
Seniors	27

#3

WORDS AND MUSIC

30 Points Possible For Each Class

CLASS	TOTAL POINTS
Freshmen	22
Sophomore	20
Junior	25
Senior	30

GLEE 1963



FORMATION JUDGES

CLASS	EXECUTION	ADAPTABILITY	TOTAL
	20 Points	TO SONG AND THEME 10 Points	
SENIOR	12	5	17
JUNIOR	14	7	21
SOPHOMORE	17	10	27
FRESHMAN	20	9	29

CRITERIA FOR JUDGING FORMATIONS

1. Any uniforms used by the participating classes will count no more than their neatness and uniformity contribute to the judging of the song and formation.
2. Glee will be presented with one basic formation in each class.
3. Participants shall not change their relative position during the singing of the song.
4. All participants in the formation must march, or count time, until the formation is completed.
5. After the formation is complete, the participants may stop but for no more than 10 seconds. This time will be determined by the judges.
6. Judging will start when the participating class is announced, and the judging shall end when they return to their seats and all have been seated.
7. No stage properties, nor change in appearance of wearing apparel is permitted. A stage property shall be any item other than the original costume.
8. In awarding points in each division, one class must receive total points. The classes under the top class may receive points anywhere from zero (0) to the full amount.
9. Please sit in your reserved section.
10. Please award points at the completion of each performance.
11. Have your ballot completed within five minutes after the Glee songs have been presented so that your ballot can be collected as soon as possible.



Judge's Signature

WORDS AND MUSIC

30 Points Possible For Each Class

C L A S S	TOTAL POINTS
F r e s h m e n	25
S o p h o m o r e s	24
J u n i o r s	23
S e n i o r s	24

SILVERTON PUBLIC SCHOOLS

SILVERTON, OREGON

P. O. Box 97

3 / 7 / 63

Dear Mike

As you can see by the total points of each class, the scores seemed very close to me.

I found this much more difficult than I expected. Some of the scores were rather difficult to read and cover thoroughly in such a limited time.

I am sorry I will not be able to be there Sat. but I send my best wishes for a successful "Glee".

Sincerely,

Bob Thornton

FRESHMAN GLEE

Manager: Mike Steding
Member-at-large: Roger Bergmann
Secretaries: Darlene Hawkins
Nancy Hutchison
Judy Moen

Committee Heads:

Programs: John Bjork
Katy White

Decorations: Kirk Ann Neil
Vicki Pitkanen

Backdrop: Carol Buell
Ty Gillespie
Mike Pearson

Tickets: John Erickson
Barbara Whalen

Records: Larry Tate
Bonnie Brown

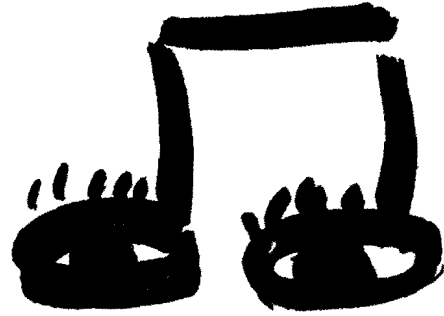
Entertainment: Karen Reppun
Mike Wilkens

Souvenirs: Mike Aldrich

Publicity: Bill Willingham
Ruth Younkers

Staging: George Cornwall

Lighting: Chris Dudley



FINAL REPORT → SOUVINER EDITION

For the Freshman Glee of 1963 we decided to change the order and content of the Glee Edition from what it had been in previous years. In order to do this we increased the number of pages (paid for by the used of advertisement) and the number of pictures per page (increased from 4-6 to 9/page and more).

In order for the edition to be a successful one requires a lot of work and time on you and your committee's part. There are several steps which need to be taken before you can actually start putting the edition together. These are:

1. Assign your committe members specific jobs and set them dead- lines in accordance with the ones set for you by the glee mana- ger.
2. Contact printers in town and take bids. Select them on the basis of workmanship and price.
3. Contact a photographer and explain the nature of the job thouroughly to him. (usually a photographer from the Collegian or Waloola will do the job, also he is the cheapest)
4. Limit the size of your committe to 5 or 6 as anymore makes it cumbersome and hard to work with.
5. Do some research into past years and see how they handled the job. Make sure you understand the job weel as your committee will be looking to you to show them the many aspect of it and answer their questions.
6. Take time to talk to the printer and have him explain to you the use of lay-out sheets, dumay copies, etc. Also the deadlines he would like things in.
7. Finally, good luck in your job as you will enjoy it a lot and be able to look back on it with pride.

There are several picture s which you will need to take and include in the edition. They are:

- 1.The winning class
2. Pictures of all the Class formations
3. Organizational pictures which includes song and formation leaders, gleeed manager, executive committee, and various committee heads.
- 4.Challenge Assembly and Senior cut-ups
5. Action shots of Glee Night
6. Action shots of Blue Monday
7. Picture of person whom Glee is dedicated to
8. Optional-Advertisement(if you decide to have it be sure and clear it with the Student Senate)
9. Also shots of preparation for Glee(class practices, backdrops, etc)

The budget needed will vary but generally for an 8 page edition it will cost \$150.00 and for a 12 page edition, \$235 dollars. Try and keep the costs as low as possible but don't cut costs to the point of making the edition look shoddy.

Finally I am going to stress the importance of organization withing you committee. You are going to have to spend a lot of time and effort especially after Glee. Be sure and explain this to your committe and those who don't feel that they can help to any degree for get about. But don't lose heart, you have one of the most important and personally rewarding jobs connected with Glee. Good luck in your edition and I hope you have the fun I have had putting together this year's souviner edition.

Mike Aldrich

BACKDROP REPORT

Freshman Glee '63

As co-chairmen of the backdrop for Freshman Glee, we especially enjoyed working with our fine committee. Each member gave all his time and efforts toward making this year's Freshman Glee backdrop a success. All the time and worry put into the backdrop was certainly well-worth its while and highly satisfying to all its members. Each succeeding chairman must also put all his energies and efforts into the backdrop to make it just as successful--if not more--than the preceeding year as this is where the freshman class can show how truly interested they are in being a part of Willamette University's great tradition.

Our first meeting took place before Christmas Vacation. At this meeting, Mike asked everyone to think of an idea for the backdrop going along with the Novelty theme. He asked that it be to scale so that as soon as the preliminary plans were completed we could begin work.

At our next meeting, the committee chose the design by Ty Gillespie. This design was based on the word novelty and "63" written in modernistic letters and using freeforms. The letters were to be fastened to 1" by 2" boards and also using them to fasten our freeforms to the flats. Here we discussed some problems which we might run into and how we would go about constructing our backdrop. Our colors which we chose were a light shade of green for the background and black for the letters and boards.

After covering the flats with paper, our first problem was fire-proofing. We fire-proofed each side of the paper

with borax and boric acid mixed with water. Our fine committee made short work of this, and we soon found ourselves painting the flats. We painted the flats only once, but we recommend that they be painted twice because the paper is very hard to cover evenly and completely using only one coat. I would like to warn any future chairman for the backdrop that after the fire-proofing is put on, the paper tightens and is very easily ripped. Our problem was keeping it free from holes, of which we did not succeed completely.

We then drew and cut our letters from heavy cardboard. This was easily done because our design had been drawn to scale. We used 1" by 2" boards, cutting them to fit the flats and freeforms--all of this first being drawn to scale on our design. Our next job was to paint the letters, freeforms, and the 1" side of the boards black. We then painted the two 2" sides with the background color.

Since all other work had been completed, we began putting the boards and freeforms on the flats. Here we nailed the ends of the boards to the flats and used corrugated fasteners where a 1" by 2" board came down between the lines. We put the freeforms on these boards and then waited until time to hang it.

The night before Glee, our committee took the backdrop over to the gym and hung it using wire to fasten it. Here we ran into the problem of the cracks showing where the flats were hanging together. We solved this problem by using masking tape to hold the flats together and then painting over the tape. With this finished, our work was completed.

MIKE PEARSON
CAROL BUELL

Our expenditures were as follows:

Paint		\$9.55
Background	\$7.95	
Letters	1.60	

Masking Tape		4.36
--------------	--	------

Paper		1.50
(to cover flats)		

	TOTAL	<u>\$15.41</u>
--	-------	----------------

DECORATIONS COMMITTEE REPORT

In dealing with the decorations, as in any committee, the most important thing to remember is to get some good workers. This year our committee members were chosen for us so we were unable to pick some really interested and cooperative people. In the end, we were forced to supplement our committee with interested people outside the committee.

The next most important thing to get in mind--and this is very important--is to get the backdrop design and color scheme as soon as possible. Since the decorations must pick up their colors and design from the backdrop, any delay by the backdrop people can cause your committee to lose a great deal of valuable time. And, when following your backdrop you should remember to be sure you are using the closest possible color matches. We really didn't have any problem with this but it is something to watch out for.

As for a working place, we found the workshop back stage in the Fine Arts building to be the most satisfactory. We originally started working in the attic of Waller, but it turned out to be too dark, dirty, and too difficult to obtain the keys.

Be sure to have the correct measurements for all your decorations. We found out at the last minute that we didn't have enough butcher paper to cover all the area we had planned. Speaking of butcher paper, be sure not to get waxy finished paper--the fire proofing won't stick to it.

Here's our budget---

tempera	1.15.
fireproofing	1.58
(both backdrop & decorations)	
ribbon for ushers' tags	1.16
crepe paper	.75
poster board & paint	<u>2.30</u>
	\$6.94

One more thing is that we divided up the committee to cover the various areas of our responsibility.-----


Usher identification
 Seating markatians
 Signs for Challenge Assembly
 Judges' seating cards
 Ticket signs
 All decorations around edge of gym

We really enjoyed working on Glee. It is really a rewarding experience to be part of Glee--you don't know how great it is until the actual night arrives. It is also a great opportunity to meet a lot of wonderful people and to make a contribution to Willamette's finest tradition.

If at any time you need some help with anything, feel free to call on either or both of us.

Co-chairmen


 Vicki Pitkanen


 Kirk Ann Neil

Tickets Committee Report

Seating:

A seating chart was obtained from Jerry Wipple. The gym was mapped out according to classes. The seating chart is incorrect and must be revised; however, it is relatively simple to do. We obtained the class enrollment from the Registrar's office, then accordingly apportioned the tickets so as to give everyone at least one and some two. We allowed 207 tickets for faculty, trustees and alumni; however, it might have been wiser to allow 250. There are a total of 1507 usable seats in the gym, but we ordered 1642 because the seats are so far apart.

Ordering:

The tickets were ordered from Johnson and Siewert on Ferry street. The tickets were printed in four days. Note--the price is about thirty dollars unless the ticket design is drawn on a card exactly the size of the ticket; and must be done in India ink. The deadline for tickets was February 15, four weeks before glee so that the alumni tickets could be mailed out.

Distribution:

We gave all the alumni, faculty, and trustee tickets to Mr. Wipple to distribute. Tickets for students were distributed Monday, March 4, in Eaton Hall. From the Registrar's office we obtained the enrollment by classes and crossed off names as each student picked up his ticket. It might be better in the future to pass out all tickets at glee practices since many didn't get tickets who wanted them.

Alvin Erickson
Barbara Erickson

Stage Committee Glee 1963

My committee was charged with putting the canvas on the gym floor and with setting up the risers which we had to remove from and return to the basement of the gym an operation that took our 12-16 man crew about 2 hours.

The first thing that I did about 2 weeks before Glee was to talk with Lester Sparks wh has an office in the Gym about what the com. would have to do. He was very helpful and we made an appointment for the next monday when we were to count the riser sections. This is very important since the Univ. often loans these out and they are not always returned. Sparks also told me about the procedure for putting up the risers. Sparks also wanted me to try to get some crutch tips for the riser legs to replace those that had been lost. Mr. Whipple of the Alumni office was/ very helpful on this although the ones that we got turned out to be the wrong size. If this comes up again, It should be remembered that there are several sizes of tips used on the risers and that there are three dozen of the smallest size that have already been purchased.

I will not get into the details of the setting up process since Sparks likes to explain that himself. If he is not here next year, there will be someone else that you will have to please with the job anyway.

When the risers are up, It is essential that all the braces (both the built-in ones on the ends and the wooden ones be / installed. It was necessary for me to go over each day to tighten these and on Saturday I checked everyone of them.

Recruiting the committee members is best left until an hour or so before they are needed as there are very few people

who are willing to comitt themselves to something like this a week or more in advance. This means however, that it is not possible to give the members aknowledgement in the program. Unfortunately, it is not possible to avoid this. Perhaps a person who was less of an introvert than I could have better luck with recruitment since there are few that sign up for this committee and there is little or no activity to hold the interest of those that do sign up until the time when there is action, Glee week.

However, there is some talk that next year the risers have to be varnished. If this is the case, it will be easy to get guys to work since the student body will pay \$1.50 hrly. to those that work on this project.

Sunday afternoon after glee the risers were returned to the basement and stacked. They may not be stacked directly on the floor but on the two by fours that are down in the basement for that purpose. Also the cardboard sheets must be put in between each of the risers when they are stacked up. I think that this concludes the workk of this committee.

George Cornwall