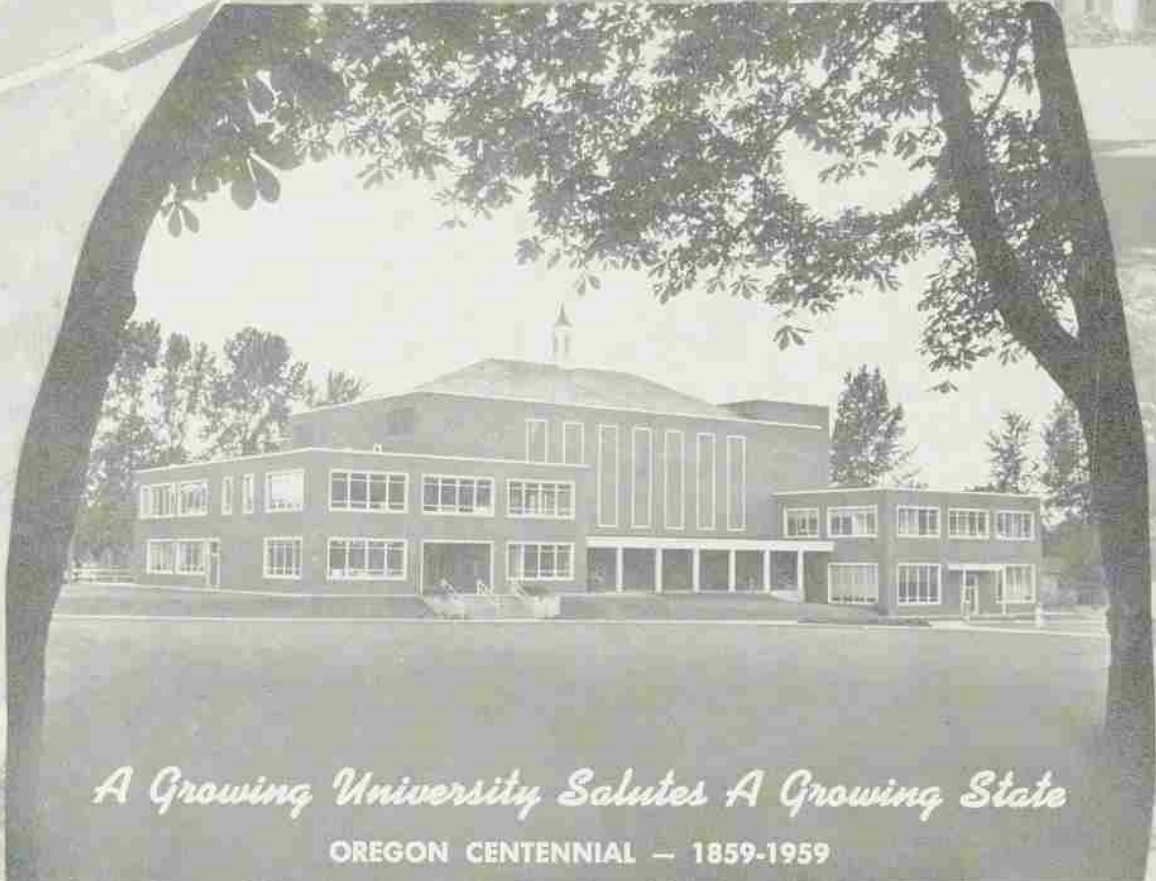


# *Willamette*

ALUMNUS



*A Growing University Salutes A Growing State*

OREGON CENTENNIAL — 1859-1959

# Willamette ALUMNUS

• Published for the  
FORMER STUDENTS OF  
WILLAMETTE UNIVERSITY, SALEM, OREGON

VOLUME VII      SUMMER, 1959      NO. 1

## Member of the American Alumni Association

### Alumni Association Officers

President	DEAN POLLOCK, '22
President-Elect	DR. ALLAN FERRIN, '41
Secretary	MARY ALLEN MILLER, '31
Ex-Officio Member	M. E. "GUS" MOORE, '34
Director Alumni Affairs	JERRY WHIPPLE, MBA
Directors	MISS VIVIAN CARR, '26
	RUSSEL W. TRIPP, '50
	CLIFFORD C. GREGG, '53
	*DR. CHARLES KAUFMAN, '29
	*G. KENNETH LITCHFIELD, '29
	*WILLIAM M. McALLISTER, '28
	*EVERETT FABER, '28
	*WALTER ERICKSON, '33
	*RANDALL KESTER, '37

\* Denotes members also serving on the Board of Trustees

## Alumni Chapters

### Bay Area

George Buland, '53, President  
75 Crescent Dr., Palo Alto, Calif.  
Diane Wickstrom, '58, Secretary  
615 Taylor St., #20, San Francisco 2, Calif.

### Seattle Area

Stanley Ryals, '49, President  
4937 33rd W., Seattle 99, Wn.  
Marian Erikson Hood, '47, Secretary  
942 10th St., Rt. 1, Edmonds, Wn.

### Salem

Larry Standifer, '55, President  
820 Empire St., N.W., Salem, Ore.  
Janice Murray Kangas, '39, Secretary  
1545 Norway St., Salem, Oregon

### Southern California

Robert Goff, '54, President  
P. O. Box 668  
Encinitas, Calif.  
Julie Mellor, '55, Secretary  
409 Marine Dr., Manhattan Beach, Calif.

## OUR COVER

*A growing university salutes a growing state. Oregon's Centennial, 1859-1959.*

## IN THIS ISSUE

From the Tower	3
Beyond the Portals	5
A Report to the Willamette Alumni	7
Class Notes	8

Editor: Nadine Orcutt Nunn, '42

Director of Alumni Affairs: Jerry Whipple, M.B.A.



Dorothea Greenwood Fravel

The job of editing an alumni magazine is not for the faint of heart, for an alumni magazine must be many things to many people. It should tell the story of the university, have news about many alumni, and have a variety of articles for the multiplicity of readers' interest. It should also be well planned, well-designed and attractive to the busiest and the most casual reader. These things and more should be done within a budget that doesn't allow much stretching for extra pictures of that prominent alumnus or unusual sports shot.

In spite of these problems and countless more, Willamette has been most fortunate in the past three years to have the talents of Dorothea Greenwood Fravel, class of '42, who has been editor of the *Alumnus*. Under the guidance of Mrs. Fravel the magazine has grown from four pages to a quarterly issue with an average of sixteen pages. It has been her interest and sensitivity to the interest of the alumni which has helped to keep them better informed as to the activities and work and future of Willamette.



Nadine Orcutt Nunn

Because of increased work responsibilities and her desire to be with her family more, Mrs. Fravel resigned this spring as editor.

It is a pleasure to introduce Nadine Orcutt Nunn, also the class of '42, as new editor of the alumni magazine. Because of Mrs. Nunn's qualifications and interest in Willamette, it is certain the *Alumnus* will continue to grow and improve.



# From the Tower

## Faculty Travels

Europe calls and ready to answer the call, as they do each year, are Willamette U's faculty members. This year's travelers include Dr. and Mrs. Ivan Lovell who will fly by jet airliner from Vancouver, B. C. to Amsterdam. From there they will visit cities in France, Belgium and Italy before going to England for the rest of the summer. Because they both have relatives there, more than half their vacation time will be spent in the British Isles.

Also leaving from Vancouver, B. C., the Stanley Butlers plan to visit first in Vienna, Austria during the June music festival. They will join the Lovells for a tour in Italy, and from then on will travel France and Germany, timing their trip to coincide with the many music festivals offered by those countries during the summer months.

The Gordon Means family will fly to Norway where they will spend most of their vacation time visiting with Mrs. Means' family in Aalesund.

Dean and Mrs. Gregg returned in May from a trip that took them to cities in Spain, France, Italy, Egypt, Lebanon, Jordan, Israel, Turkey, Greece, Austria and Denmark. Their observations of the Mediterranean countries formed the background for Dean Gregg's address to the Alumni University on June 6.

Dr. Gale Currey will combine work and play during a year abroad in France. Her experience should be unique since she is the first American physical thera-

pist to go to France as part of a special French-American therapist exchange program. "Atlantique," a French-American society and sponsor of the exchange, is supported by a group of wealthy people who feel that France needs more rehabilitation provisions.

Dr. Currey will spend her year's sabbatical at the Centre Ouzoer-des-Champs located in the Loire River valley. The 50-bed rehabilitation center treats women from 14 to 40, provides medical care and physical and occupational therapy services, and maintains a scholastic program for those who are still of school age.

## Changes On Campus

Don Peterson, admissions counselor for the past year, has accepted a position with International Business Machine corporation beginning June 1. Don, who graduated from Willamette in 1957, will start in a sales training program for the data processing division of IBM. He and his wife Anita (Booth '58) expect to make their home in Salem the next year.

Miss Lois Latimer, head of the Home Economics department; Gus Schwalen, superintendent of grounds and buildings; and Mrs. D. A. Larson, head of the bookstore, are retiring this year after many years of service to the school.

Miss Latimer has taught at the University for 35 years and has seen her department grow from a small part of the Music Hall, which was then the Science building, with rather "primitive" equipment including a wood stove which had

to be stoked each day by the Home Ec girls and Miss Latimer, to a very satisfactory department in Collins Hall the past 17 years.

Gus Schwalen has been at Willamette for 15 years keeping the campus in shape, and Mrs. Larson has been in the bookstore since '44, watching it grow from a text-book shop to the "general store" it now is.

Replacements will be Miss Mildred E. Deischer for Miss Latimer; William Bauer for Gus Schwalen; and Mrs. Enid Rondeau for Mrs. Larson.

Mrs. Eunice Bartel is retiring from the English Department but will not leave the campus as she will stay on at the University in her capacity as a Latin instructor.

Replacing Mrs. Bartel in the English Department will be Miss Patricia Anderson of Cornell University, who will teach courses in freshman English, expository writing and contemporary literature.

Another new member of the faculty announced for the fall session will be Dr. Edwin James Stillings of Drury College. He will offer one course in problems of government, but will specialize in public administration, public finance, and municipal and state government.

Other faculty changes for the coming year bring to Willamette Dr. Adrian H. Lindsey, head of the agricultural economics department at the University of Massachusetts, who will be visiting assistant professor of economics for the

(Continued on Page 4)



Dr. Gale Curry



Dr. Willis C. Gates



Mrs. Larson

## From the Tower

(Continued from Page 3)

year. He will take the classes of Professor Richard Gillis, associate economics professor, who will continue graduate work at University of Oregon.

Dr. Willis C. Gates has accepted an invitation from the director of the School of Music, Ohio University at Athens, Ohio, to be visiting lecturer in Musicology for a 1-year appointment.

Dr. James Nickel will leave Willamette to go to Oklahoma City University where he has accepted a chair in the Mathematics dept. as assistant professor of mathematics.

### Willamette's Ambassadors

At the inauguration of Dr. Raymond B. Withey as president of Green Mountain College, Willamette University was represented by Mrs. Robert E. Edwards, Woodland Park, Rensselaer, N. Y. Dr. Withey was formerly Dean of Students at W.U. Also representing Willamette at other inaugurations were the following: Robert Henry Day at Howard College; Glen MacCaddam at Centre College; Claude T. Cook at San Fernando Valley State College; Theodore B. Mitzner at Wofford College; and Dr. Marcus A. Waltz at University of Nevada.

### New Booklet Available

Mr. Dean Pollock, '22, president of the Willamette Alumni Association, has composed and edited a 24-page booklet designed to acquaint prospective Willamette students with the Willamette campus and its environs. Pictorially complete, it is a most attractive presentation. Mr. Pollock has given special emphasis to Willamette's heritage, the student

community, the campus, the school's home city, its way of life, including educational teamwork, academic standards, its curriculum, athletics, and the lighter side of learning, and discusses the church-related college.

### Alumni Action

Two members of the board of trustees as well as a new association director were elected at the alumni meeting.

Dr. Charles Kaufman, Forest Grove, Ore. physician, and G. Kenneth Litchfield, Newport, Ore. attorney, are the new trustees. They replace Otto J. Wilson, Salem, who concludes nine years on the board, and Paul Geddes, Roseburg, Ore., who completes six years.

Later, the annual meeting of the trustees elected Gov. Mark O. Hatfield to a position on the 45-member board.

Miss Vivian Carr, Salem, was elected as a new director of the alumni association to replace Dr. John Ross, Salem physician. Miss Carr is head of the English department at North Salem High School.

Alumni also named five of their number to receive alumni citation awards for service to their professions and communities. They will receive the citations in February, 1960 at Founders' and Benefactors' Day. They are Herman Clark, faculty member from 1923 until his retirement in 1952; Judge Joseph Felton, circuit court of Marion County; Miss Beryl Holt, retired mathematics teacher at North Salem High School; Edward J. Winans, Willamette's first Rhodes scholar in 1907 and a missionary in China and Japan for many years; and Miss Vera Wise, head of the art department at Texas Western College.



Don Peterson



Miss Latimer



Dr. James Nickel

# • Beyond the Portals

Excerpts from the alumni banquet address by Tyrone Gillespie,  
assistant to the president of Dow Chemical Co.

I believe that a college which does its work well will teach its graduates how to live. This is success. This teaching may be complex and take many forms, but it will fundamentally consist of only three things:

First, it will give the graduate an experience which will serve to guide him or her to choose a life mate and to ennoble and enrich the family life. Many of us can bear personal witness that Willamette fulfilled this function very well.

Second, the college will furnish its graduate a faith to live by, a religion supported by mores and a personal code of ethics which will be an unfailing guide and source of strength.

Third, the college will give its graduate the technical knowledge and know-how to hold a position, develop a business, and to barter knowledge for service in a manner to collect the reward we must have to provide for the needs of our families and ourselves.

Thus far a college should go, and I think we would agree that Willamette has a proud tradition in providing these three essentials of preparation for living.

Accumulation of wealth or power without a happy family life, or in the hands of one without religion or scruple, is not success.

This College, as an educational institution of great standing, will prepare its students to pass through its portals and live and succeed in the world of today.

What will that world be like?

First, let's look ahead for the next four or five years. There will be a greater security which is traded for considerable individual freedom. In a world where two opposing philosophies are competing, there will be continually mounting taxation. There are terrible instruments of destruction poised for launching everywhere. Barbarism still flourishes in spite of the best efforts of men of good will to outlaw war.

The graduate of this year faces a short term period of prosperity. The Gross National Product in 1958 was 437 billion dollars. It is believed that it will be 499 billion dollars in 1960. Money velocity is high. Expansion is going another round. Debt is being raised and is above income totals. Consumers are bullish, but the economy is fast approaching an all time peak. Stocks of leading companies are selling at 25 to 40 times earnings. That of my company is one of the high ones because it is a growth company.

I predict that this situation will continue for about 18 months to two years. As far as the graduate is concerned, this can be good or bad depending on how sensible he may be. This period of roaring exuberance in the economy does give him a short time to get established, and if he does so firmly he will ride through. If he becomes enthralled and exalted by this prosperity, he is sure to have to reorient himself when the prosperity runs its course.

Why will it run its course in the period I have selected? Well, we are fast closing the gap between our needs and our productive capacity in most major items. More people are buying common stocks. The thrill of purchasing stocks is sopping up reserves in individual accounts. Taxes are rising at all levels for increased services. A liberal Congress will draw off still more money for government.

Interest rates are rising — the prime rate went to 4½ per cent on May 15th. Unions are into contract negotiations and are increasing demands. Foreign aid is moving much of our surplus wealth abroad.

There are two factors on the foreign scene that are most important. They are good from the European point of view — but we must account for them in our calculations. First, the gold supply of the United States is 20 billions of dollars. If it falls below \$12 billion we will face severe credit restrictions, which will affect growth, production and prosperity. There are already 16 billion dollars of outstanding claims against this gold. Fortunately, claims have not come against our gold reserves in major runs, though last year foreign claims amounted to about 2½ billion dollars.

Germany has the most of these claims, some 4½ to 5 billion dollars. The present finance minister understands the position of the United States, and it is believed that because he is friendly to this country he will exercise these claims for dollars rather than gold. If he were to decide to exercise his claims in gold, we should have to install severe credit restrictions which could rapidly impair or halt our present prosperity. It is a new and anomalous situation where one man in a foreign country is in a position to so affect our fiscal affairs.

The other factor which must be recognized is that the European Economic Community or the "Common Market" is a revolution not fully understood or appreciated by the man on the street. The six nations which now comprise the Common

Market, Holland, Belgium, Luxembourg, Germany, France and Italy, have a combined population approximately that of the United States. They have capital. They have know-how, and able manpower. They have lower wages. They are becoming more conservative in their governmental policy. They have lower but rising subsistence levels. They will build productive capacity rapidly. These production units will be large, for usually large scaling means lower production cost. They will aggressively seek markets for goods their countries' subsistence levels will not yet allow them to absorb. This will be done by aggressive, hard working salesmen in all markets, aided and abetted by capable nationals in the market. They will offer generous credit terms and lower prices.

We have a European market of about \$10 billion dollars and a South American market of about \$4 billion dollars, which will slowly and partially dry up. We are already seeing many foreign products on our own shelves and we will see more. The small foreign autos which have made such headway in our economy, is but one consumer product. We are realizing in our part of the world that the St. Lawrence Seaway is a two-way street.

All of these factors are indicative that the economy of our country in the immediate future will have its greatest rise. When it reaches its peak, it certainly will not fall to 1930 depths — there are too many safeguards for that — but the fall off or recession will likely be protracted.

I caution you, do not rush out and sell your farm, based on this optimistic-pessimistic suggestion, for I'm not an economist and I'm speculating on the short term problems and futures which may face this year's graduate.

The world of today is one of specialization, and training must be more complete in the professions and arts. A few years ago companies raised their presidents from men trained in the ranks. Today more "professional managers" are filling these positions. The trainee graduate of a business school, in a company like Dow or du Pont, is a cousin to the graduate studying in the seminary to some day be a Bishop. One can't be half interested, half trained, half bright or half responsible, and succeed.

The world has grown smaller in its time and space relationships, and the end is not in sight. I suppose that I travel more than businessmen ordinarily do, but I'm not

(Continued on Page 6)

## • *Beyond the Portals*

(Continued from Page 5)

completely untypical. Since the first of March I have been in Melbourne, Sydney, Honolulu, Nandi, Latouka, Koro Levu, Suva, San Francisco, New York, Washington, New London, Old London, King's Lynn, Delft, Leyden, Rotterdam, Manchester, Dublin, Belfast, Sligo, Galway, Limerick. These are far flung places, but let me assure you that there are many Americans in these places — buying, selling, building, trading. Cities like Duisberg, Grangemouth, Messina, Coleraine, which are little known to many of you today, will in a short while be challenging the industrial might of Newark, Detroit, Milwaukee and Chicago.

Colleges must, I believe, point out and guide the student of tomorrow in a greater knowledge of world history and the national history of other lands, an amplified skill in languages, a training in customs and mores of other than English-speaking peoples, and enable the graduate of tomorrow to grasp the elements of International Trade and Finance, or tomorrow's business man will be at a great disadvantage at home and abroad in dealing with and competing with his counterpart from across the waters.

There are some other evolutionary changes occurring in society which will affect the new graduate and all of us whom the actuaries would allow to live for twenty more years.

For one thing, we will see tremendous population pressures. The suburbs are going to reach out into the pasture lands. The urban areas are going to become more crowded. The present world population is 2.5 billion people as nearly as can be estimated. The increase in this population is in the order of magnitude of 1.2 per cent per year. Barring another world war, at this rate the world population increase will be 600 million people by 1980. This is between three and four times the number of people in our nation.

Such population pressures are dangerous, but they also make for great opportunity. There are about 30 billion acres of habitable land in the world, and competition will exist for this land. The excuse of "lebensraum" used by Hitler will be used again to justify aggression. However, these pressures will boom land reclamation, interplanetary exploration. They will create more business for consumer items; more clothes, food shelter, communications, and transportation will be needed.

From 1776 to 1959 our country grew from 3 million to 180 million. This is a rate of one per cent per year. We differed then from now in that we had more new land, but there is still much land. We had, and still have, most of the natural resources for our economy. However, the principal thing which we had was the demand of our forefathers for freedom — freedom to fail, freedom to succeed. This freedom made America the wonder of the world. Free men, for profit, produced in abundance for

the needs and comforts of our people. With freedom to invest, to make, and to sell, the growth of our country was a challenge and an opportunity. The light of this freedom is flickering.

There is development of a new body of knowledge in space. Sputnik was the first tangible result. This has created a hysteria in our country. It has resulted in demands for more money for rockets and satellites. It has resulted in suggestions for government control of education to see that more engineers are trained. It has caused thought of control of prices and wages.

Russia has discarded the notion that morality, conscience, and happiness are the exclusive possessions of individuals and can only be achieved by individuals with divine help. They have discarded the notion that men are equal, and they do not recognize the infinite diversity in talents, tastes, ambitions, capacities, and material conditions natural to free people.

We follow Russia's course by moving to diminish property rights. This we have done. One illustration of such action on the part of our government is the deprivation of private patent rights in any development under the Atomic Energy Act and the National Space Act. The effect of government monopoly under these two acts has been to cause America to slip back in the civilian production of nuclear power, for the incentive is not there to create the machines, processes, and products which would make us lead in this field.

Government is rarely efficient in its operations, and its competition with private enterprise in production is economic waste.

The competition between the United States and Russia is more than a battle of technology — it is a battle of philosophy. I am hopeful that our traditional philosophy of freedom which made us the greatest nation on earth, will sustain us in this effort. I question that we will win if we attempt to out-socialize the Russians. They are pretty adept at socialism. Their people pay for statism by not having the comforts and, what we would consider, many of the necessities of life. They have also foregone the blessings of religion and freedom to achieve a liberal, socialist society.

Socialism and progress do not go hand in hand, as socialists would have us believe, because socialism denies the natural instinct of acquisition and ambition which is the drive of men in free enterprise.

If the issue with Russia is in doubt, there is less doubt about our coming struggle with Red China. In the next 20 years this behemoth will rise with its tremendous brains, manpower, and natural resources and challenge Russia and our country too.

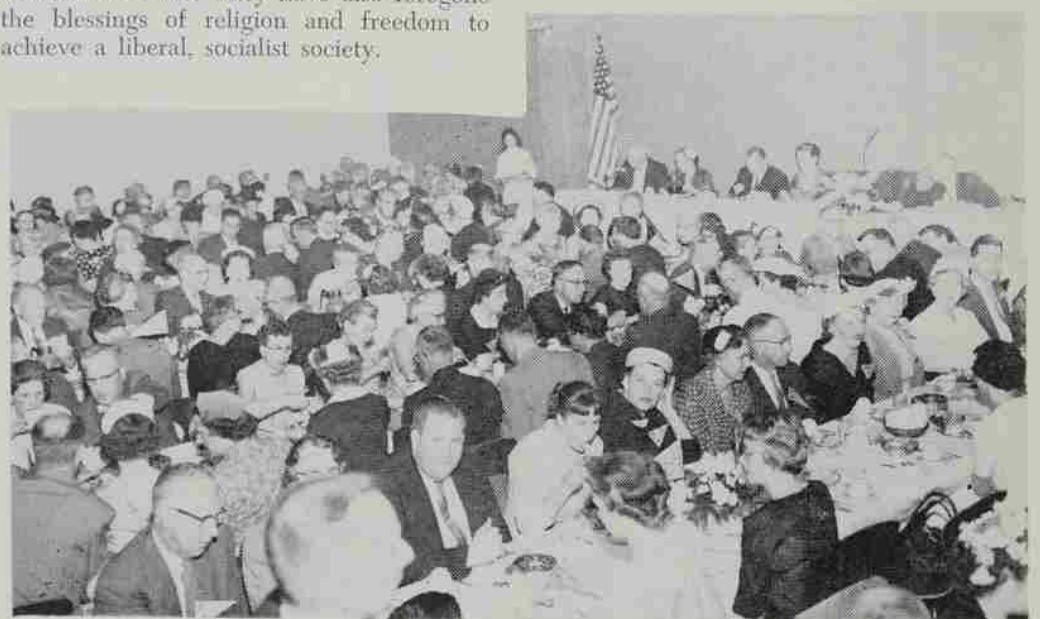
Defense to this rise will best come from by-products of our normal production which, in the course of making better consumer goods, transportation and communication equipment, and production of new foods, medicines, clothing, will teach us new and wonderful things which the flexibility of free men will use to conquer space and probe the mysteries of the universe as well as use in our defense and our material welfare.

The sum of these things I have discussed: the hazard of war; the diminution of time and space; the expansion of international trade; the approach of the space age; greater population pressures; and the approach of socialism both from within and without, makes obvious that life in the society of tomorrow and the day after, will be complex.

Highly educated and skilled men and women will be needed in this expanding industrial society. These can be produced in any good technical school. The kind of men and women who will have that additional "plus" which consists of a desire to live to the full, who will believe in god and the dignity and individuality of man, who will have been trained to be flexible, to think for himself or herself; these people will come from colleges like this college.

The faith, the assistance of the alumni, can be a vital factor in the success of this college. The success of this college can be a vital factor in the success of our nation.

The success of our nation will mean a happy and prosperous people, the envy of all the world.



Alumni Day Banquet



# WILLAMETTE UNIVERSITY

## ANNUAL GIVING

FINAL REPORT, JUNE 30, 1959

**SUMMARY OF GIFTS  
TO GENERAL BUDGET  
FOR CURRENT OPERATIONS 1958-1959**

ALUMNI	\$36,565.57
PARENTS	2,800.68
METHODIST CHURCH	21,171.82
OREGON COLLEGES FOUNDATION	22,838.88
OTHER	9,562.03
	<hr/>
	\$92,938.98

### Pursuit of Excellence

The fine record achieved by Annual Giving this year is a source of great encouragement to the University. To the Class Agents, Regional solicitors, and our friends in Industry and Church, whose untiring efforts made this possible, our thanks are profound.

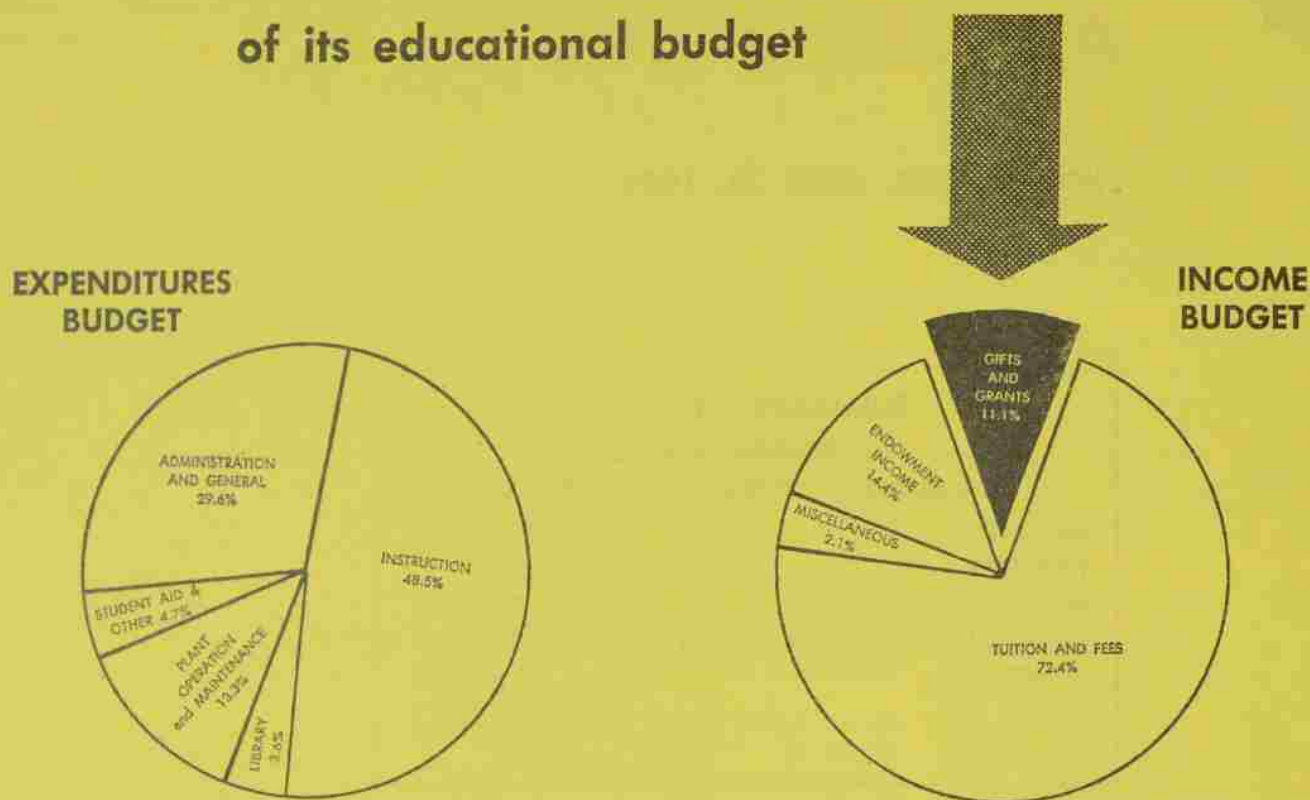
As has been done in the past, this year's Gifts will be used to support that "margin of difference" which Willamette affords her students. Tuition has never paid the full cost of education. On the average it costs Willamette \$1,000 per student per year. The student who now pays \$700 a year in tuition, receives a \$300 "margin of excellence" for which he does not pay. Gifts have made up the difference in the past. And still do.

Such improvements in faculty salaries, as we have been able to make in recent years, rest very largely upon Annual Giving. It must therefore be sustained over the coming years, and on no less than its current level, because it supports these continuing obligations. Willamette cannot do without it.

On the University's part, I pledge every effort to have Willamette justify fully its claims for your understanding and support as a university committed to the pursuit of excellence in all that it does.

G. Herbert Smith  
President

**THOUSANDS** of alumni and friends' gifts helped  
to provide Willamette with this share  
of its educational budget



THE EDUCATIONAL BUDGET FOR 1958-1959

*The principal source of funds to improve the program of Willamette is in the category of gifts and grants. It is the principal source because it is the one area that is "expandable," since income from investments depends primarily on endowment gifts already made. Never underestimate the role of your annual gift -- whatever its size, it is important in itself and encourages the gifts of others.*

# THE HONOR ROLL

## Loyalty Fund

July 1, 1958 - June 30, 1959

1891  
Mabel Adair Lockwood

1894  
Alec Harold

1897  
Contributors - 2  
Amount - \$25.00

Charles J. Atwood  
Hetta Field

1898  
Edna Rugg Hubbard

1900  
Seth Leavens

1901  
Frances E. Cornelius  
Siewert L

1903  
Contributors - 4  
Amount - \$40.00

Elma Byrne McAllister  
Dr. Mary B. Purvine  
Wilhelmina Koschmieder  
Sheldon  
Harry Swafford

1904  
Arthur S. Benson L

1905  
Lila Swafford Moser

1906  
Contributors - 2  
Amount - \$22.50

Ronald Glover L  
Bertha Scott Tennant

1907  
Contributors - 6  
Amount - \$61.00

Vera Byars Glover  
Olive Rigby Lucas  
Arthur J. Prideaux  
Veva Bartlett Smithson  
Fleda McPeck Stephens  
Rev. Edward J. Winans

1908  
Contributors - 5  
Amount - \$25.00

Merle Hockett Davenport  
Bess Cornelius Elliot  
Ione Fisher Emery  
George Neuner L  
Austin C. Price

1909  
Contributors - 6  
Amount - \$100.00

Roy Hewitt L

Edith Carter Kuney  
Elva Winslow Nelson  
June Patty Shields  
Cynthia Gatch Skidmore  
Leon Yankwich L

1910  
Contributors - 8  
Amount - \$108.50

Clark R. Belknap L  
Cynthia J. Hornbrook  
Bowden  
Rev. Ernest E. Campbell  
Nora Emmel Forbes  
Bertha Gross Proebstel  
Perry P. Reigelman  
Lelia E. Rigdon  
Roy F. Shields L

1911  
Contributors - 7  
Amount - \$91.00

Hattie Beckley Bellinger  
Beulah Clark Bullock  
J. W. Chamberlin L  
Theo Bennett Martin  
Dr. Fred H. Thompson  
Lois Byrd Upjohn L  
Dr. Guy A. Woods

1912  
Agent - Frances Utter  
Contributors - 14  
Amount - \$213.00

Margaret Graham Conner  
Lettie Gregson Crane  
Merton DeLong L  
Dr. Charles B. Harrison  
John Hatz (Memory of)  
Alta Altman Hurst  
Mabel Magness Kile  
Edgar L. Martin L  
Vice Admr. Ross T.  
McIntire  
Albert N. Minton L  
Earl Nott L  
Clara Hardwick Rees  
John J. Roberts L  
Frances Pohle Utter

1913  
Agent - Gertrude Frees  
Contributors - 13  
Amount - \$162.50

Dr. C. E. Bates  
Harlie Blackwell  
Gertrude Reeves Frees  
Margaret Gittins  
Sidney J. Graham  
Lulu Helst  
Mabel Welborn McInturff L  
Oliver V. Mathews  
Ada Mark Mills  
Phil Newmeyer  
William Schreiber  
Sadie Boughey Small  
Jessie Young West

1914  
Agent - Laura Heist  
Contributors - 18  
Amount - \$269.25

Laura F. Austin  
Ava McMahon Barnes  
Herman Clark  
Electa Chapman Fisher  
Errol C. Gilkey  
Mary Pigler Goebel  
Lottie Penn Gregory  
Laura Heist

Aggie Alford Larson  
Edith Sherwood Mason  
Rena Mickey  
Waldo O. Mills  
Dr. Benjamin C. Neustel  
Reynolds W. Ohmart  
Elwina Schramm Pfaff  
(Memory of)  
Russell H. Stephens L  
Dr. George Vandervert  
Dr. Neal L. Zimmerman

1915  
Agent - Naomi Masee  
Contributors - 16  
Amount - \$151.50

Mary Cone Acheson  
Thomas E. Brunk  
Emery D. Doane  
Gertrude Eakin  
Clara Schnasse Francis  
Dr. Mildred McBride  
Getchell  
Dr. Paul Irvine  
Arthur Marsh  
Naomi Runner Masee  
Glen McCaddam  
Daisy Mulkey Maltby  
Dr. Helen Pearce  
Roland (Peter) Pfaff  
Leland R. Sackett  
Lucille Kuntz Schramm  
Grace Thompson Sherman

1916  
Agent - Beryl Holt  
Contributors - 15  
Amount - \$120.00

Anonymous  
Dr. Read Bain  
Herbert Blatchford  
Frances Gittens Brown  
Ola L. Clark  
Beryl Holt  
Rev. Franklin M. Jasper  
Howard P. Jewett  
Eva Hogue Jory  
Hazel Smith Marsh  
Florence Page Nussbaum  
Ada C. Ross  
Mabel St. Pierre  
Lester Sheeley L  
Helen Wastell Winters

1917  
Agent - Margaret Lewis  
Contributors - 13  
Amount - \$99.50

Irma Botsford  
Emma Minton Doane  
Dr. George G. Forbes  
Grover A. Gates  
Rosamond Gilbert Haight  
Louis O. Hepp  
Samuel R. King  
Margaret Miller Lewis  
Violet MacLean  
Aetna Emmel Olson  
Charles R. Randall L  
Ruth Winters Tasker  
Judge W. A. Wiest L

1918  
Agent - Fanny Sackett  
Contributors - 17  
Amount - \$185.00

Mabel A. Boughey  
Edith Bird Collins  
Rev. Earl B. Cotton  
Harold E. Eakin L  
Mary E. Eyre  
William Ellis L  
Ruth Peringer Green  
Dr. Lloyd R. Haight  
Olive Mark Haugen  
Evelyn Reigelman Jordan  
Dr. F. Kenneth Power  
Blanche Baker Proctor  
Marie Luthy Putnam  
Mary B. McKinney  
Rawlings  
Margaret Garrison  
Robinson  
Fanny McKennon Sackett  
Mabel Garret Wagner

1919  
Agent - Lelia Johnson  
Contributors - 19  
Amount - \$243.25

Helen Goltra Bagley  
Metta Walker Baughman  
Glady's Nicholls Elliott  
Helen Moore Fisher  
Grace Sherwood Fleming  
Dr. Robert M. Gatke  
Elizabeth Tebben Harris  
Lelia Johnson  
Fay Wells Lien  
Faye Bolin Millie  
Vesta Mulligan  
Ruth Stewart Roe  
Mary Parounagian  
Schroeder  
Lestie J. Sparks  
Carolyn Sterling  
Louis F. Stewart  
Homer G. Tasker  
Dr. Margarette Wible  
Walker  
Charlotte Tebben Wilson

1920  
Agent - Fern Daugherty  
Contributors - 20  
Amount - \$189.50

Karl G. Becke L  
Myrtle Smith Boicourt  
Rev. Bernard Brewster  
John P. Brown  
Fern Wells Daugherty  
Millard B. Doughton  
Estelle Satchwell Gatke  
Rev. C. Murray Keefer  
Eva Parrett Klein  
Kenneth C. Legge  
Velma Baker Legge  
Mary Findley Lockenour  
Rev. Robert W. Maulden  
Harold C. Miller  
Merrill D. Ohling  
Odell Savage Ohling  
Grace Bagley Person

Hazel Bear Stewart  
Vera Wise  
Genevieve L. Yankke

1921  
Agent - Tinkham Gilbert  
Contributors - 31  
Amount - \$420.00

Dr. Frederick D. Aldrich  
Rhoda Persons Baker  
Dr. Frank B. Bennett  
Fay Peringer Coulter  
Edna Gilbert Davies  
Lawrence E. Davies  
Mildred Garrett Day  
Dr. Paul L. Day  
Sybil McClure Doughton  
Dr. Robbin Fisher  
Paul S. Flegal  
Tinkham Gilbert  
Helen Satchwell Gragg  
Rein E. Jackson  
Glyde Ausman McGrew  
Myrtle Mason McKittrick  
Henry J. Millie L  
Glady's Crozer Morse  
Muriel Steeves Morse  
W. Bernard Morse  
Ina Moore Potter  
Charlotte Croisan Rarey  
D. Russell Rarey  
Dorothy Grounds Ross  
Mary Notson Sackett  
Edwin D. Socolofsky  
Henry R. Spiess  
Robert C. Story  
Dr. Hubert T. Wilken  
Dr. Paul W. Wise  
Sybil Smith Wise

1922  
Agent - Elsie Gilbert Jackson  
Contributors - 34  
Amount - \$871.50

Minnie Ambler  
Glady's I. Bartholomew  
Ethel Mncroft Bennett  
Glady's Wilson Black  
Lorlei Blatchford  
Bonnington  
Dr. Andrew C. Caton  
S. Marie Corner  
Lester S. Day  
Emma Shanafelt Day  
Hugh A. Doney  
Harold P. Drake  
Joseph F. Fleigel, Sr. L  
Clarence J. Gillette  
Grace Collins Goudy  
Grace Tyler Hockett  
Elsie Gilbert Jackson  
Laura Rugless Kracaw  
Marguerite Cook Lawson  
Virginia Mason  
J. Fred McGrew  
William B. MacKittrick  
Noble Mooche  
Dr. Wilfred L. Pemberton  
Dean Pollock  
Mildred Brown Pollock  
Rev. Harry E. Rarey  
Ralph Rehbock  
Benjamin E. Rickli

### SUMMARY OF 1958-1959 LOYALTY FUND

SOURCE	DONORS	AMOUNT
College of Law	185	\$ 2,320.75
Colleges of Liberal Arts and Music	2,050	19,244.82
Special Alumni Gift		15,000.00
	2,235	\$36,565.57

#### CLASS HONORS:

Most Donors 1950 - 92  
Most Dollars 1924 - \$1,000  
Highest % of Class Giving 1912 - 82%

Extreme care has been taken with the preparation of these lists, but some errors and omissions are inevitable. It will be greatly appreciated if you will bring them to the attention of the Alumni Office.

L—Denotes College of Law Graduate. †—Honorary Degree

## BANNER CLASSES

### Number of Contributors

CLASS	AMOUNT	AGENT
1950	92	Miller
1952	90	Juba
1953	88	Scarborough
1949	88	Morgan
1955	87	Steeves
1954	82	Crossler
1957	80	Boothby
1951	79	Makey
1958	77	Short
1956	74	Ray

Mabel P. Robertson  
Vernor M. Sackett  
Dr. Cecil L. Shotwell  
Irma Fanning Shotwell  
Marion Linn Sparks  
Rev. John W. Warrell

1923

Agent — Esther Downs  
Contributors — 43

Amount — \$775.00  
Lola Housley Alter  
Ellsworth L. Anslow  
Pauline McClintock Bain  
Dr. Verne D. Bain  
William Baker  
Vesta Dickson Bean  
Freda S. Beck  
Dr. John C. Brougher  
Maxine Buren  
Paul F. Burris L.  
Wallace P. Carson L.  
Mildred Streyer Colcord  
Truman W. Collins  
Luther D. Cook  
Jay D. Coulter  
Ina Belsell Cross  
Esther McCracken Dixon  
Esther Parounagian Downs  
Faye McKinnis Fisher  
Sara Pratt Gillette  
Paul F. Green  
Dr. Robert D. Gregg  
Louise Rumohr Irving  
Marjorie Flegel Jacroux  
Carmen Harwood  
Jennison L.  
Rev. Francis M. Kinch  
Chris J. Kowitz L.  
Martha Ferguson  
McKeown  
Thelma Mills  
Dean Hatton Mochde  
Genevieve Findley Oliver  
Dr. Cecil E. Pearson  
Carol Rahskopf Petree  
Alta Kerschner Rieck  
Veona Williams Socolofsky  
Margaret Bowen Story  
Esther Roeder Taylor  
Alma Rhorer Vinson  
Elton L. VonEschen  
Dr. Bruce E. White  
Grace Brainard White  
Helen Hardy Yancey  
Dr. Waldo Zeller

1924

Agent — Robert Notson  
Contributors — 41

Amount — \$1,000  
Byron Arnold  
Helen Lovell Becke  
Isabel Clawson Bowersox  
Alma Wells Bratton  
Charles L. Burggraf  
Pauline Remington Cohen

Georgia Morgan Cook  
Dr. Maurice E. Corthell  
Michael T. Edwards L.  
Edna Jennison Ellis  
Lela E. Ellis  
Margaret Louise Gates  
Mary Wells Gear  
Donald P. Grette  
Alice Wells Grondahl  
Margaret McDaniel Hisey  
Oury Hisey  
Edward Huston  
Caroline Wilson Keck  
Mabel Davies LaBare  
Dr. Albert V. Logan  
Eva Ledbetter Miller  
Violet Coe Mumford  
Robert C. Notson  
H. Elaine Oberg  
George L. Oliver  
Fred J. Patton  
Phyllis Palmer Patton  
Anne Lavender Ramquist  
Robey S. Ratcliff L.  
Irene Walker Rickli  
Leonard R. Satchwell  
Erma Smith Shelburne  
Perry Sloop  
Ethelyn Daniel Soss  
Julia Corner Street  
Ruth Hill Viguers  
Willis D. Vinson  
Ethel Adams Walker  
Carol Cheney Winters  
Kathleen LaRaut Wrenn

1925

Agent — Carmelita Barquist  
Contributors — 43

Amount — \$705.00  
Claire F. Ausman  
Carmelita Barquist  
Dr. Leland T. Chapin  
Rawson H. Chapin  
Beryl Bond DeGuire  
Judge George R. Duncan L.  
Dr. Dwight H. Findley  
Elaine Clower Fisher  
Laura Best Fisk  
Orlo M. Gillett  
Thornton M. Gleiser  
Margaret Legge Griffith  
Wallace C. Griffith  
Dr. P. Malcolm Hammond  
Lucia Card Hansen  
Dr. Lloyd Hockett  
Frances M. Hodge  
Dr. Harold K. Isham  
Blanche Jones  
Volena Jenks Jones  
Mary Keefer  
Laura Phipps Klaus  
William W. McKinney L.  
Eloise Reed Miller  
Juanita Henry Moll  
Floyd D. Moore L.  
George Moorhead  
Jenelle Vandevort Moorhead  
Adelia White Notson

Clarence Phillips L.  
Rev. Paul N. Poling  
Treva C. Powers  
Ruth Ross Rhoten  
Elizabeth McClure Roeder  
Paul G. Roeder  
Dorothy Owen Sloop  
Fay Sparks  
Carolene Tallman  
Ellis F. VonEschen  
Rev. Leroy H. Walker  
Dr. Roswell S. Waltz  
Gladys Morton Wilder  
Esther Moyer Zeller

1926

Agent — Louise Barton  
Contributors — 46

Amount — \$800.00  
Frederick Arpke  
George H. Atkinson  
Louise Kaufman Barton  
Eva Tracheron Bell  
Hugh Bell  
Charles A. Bond  
Jessie Pybus Bond  
Isabelle Noftsker Bove  
Lucile Wylie Brechtel  
Richard W. Briggs  
Esther Bauman Brougher  
Vivian Carr  
Dr. Filmer Carter  
Ila G. Comstock  
Oliver Crowther L.  
Dorothea Sibley Day  
Warren H. Day  
Agnes Rumburg Derry  
Elbert R. Derry  
Mildred Tucker Duncan  
Genevieve Thompson Dyer  
Herbert S. Erickson  
John H. Fasnacht  
Marie Rostein Fasnacht  
Pauline Miller Gillim  
Susie Church Huston  
Marjorie Christenson King  
Mabel Flock Larrison  
Oma Emmons Mackie  
Myrtle Jensen Malcomb  
Rachel DeYo Medler  
Edith Mickey Mix  
Beulah Fanning Moore  
Lenna Gilbert Nee  
Charles Nunn  
Joseph J. Nunn  
Fred H. Paulus L.  
Dr. Gerald Pearson  
Helen Johnson Rulifson  
Lois Nye Satchwell  
Daniel Schreiber  
Alice Falk Stewart  
Dr. Ralph M. Stoizheise  
Josie Newland Trindle  
Hollis Vick  
Dr. C. Gilbert Wrenn

1927

Agent — Elaine Mason  
Contributors — 46

Amount — \$600.25  
Eugenia Baker Allen  
Elizabeth Silver Armstrong  
Remoh Tryer Arpke  
Mildred McKillican  
Atkinson  
Dr. R. C. Blatchford  
Dr. Ruskin Blatchford  
Anna Lennartz Bushue  
Dr. Daryl M. Chapin  
Wanda Elliott Chapin  
Marion Lorns Clendenning  
William W. Crow  
Clarence L. Church  
Neva Walker Church  
Dr. Earl W. Douglas  
Dr. W. T. Edmundson  
Francis E. Ellis  
Dr. Mary M. Erickson  
Dr. Eunice Flock  
M. Clare Geddes  
Dr. Ronald S. Haines  
Nena Froloff Haynes  
Ruth Drew Holman  
Letha Miller Landis  
Earl M. Lawton L.  
Rev. Herbert Luscombe  
Elaine Chapin Mason  
Dorothy Boardman Mefford  
Margaret Brown Miller  
Chaplain Ted Mitzner  
Edgar R. Mumford  
William J. Nee  
Rose Wetherell Nelson  
Hazel R. Newhouse  
Alice G. Norris  
Mildred Tomlinson Phillips  
Olive Tomlinson Poling  
Sadie Jo Read  
Viola Carrier Renshaw

Keith Rhodes  
George A. Rhoten L.  
Dr. George Rigby  
Tom Roe  
Dr. John P. Russell  
Eugenia M. Savage  
Turfield D. Schindler  
Walter W. Weibon

1928

Agent — Hugh McGilvra  
Contributors — 29

Amount — \$417.60  
Evangeline Heineck  
Blatchford  
Mildred Mills Blatchford  
Claudia Gerth Elbert  
Everett Faber  
Margaret Arnold Huson  
Royal W. Keefer  
Dessie Cox Larsen  
Kenneth G. LaViolette  
Judge William McAllister L.  
Hugh McGilvra  
Louise Nunn McGilvra  
Frances Lemery Miller  
Paul F. Miller  
Ellen VanNice Mitzner  
Edna L. Morgan  
Harold S. Mumford  
Dr. Henry Oberson  
Louise Garrison Owen  
Ella R. Pfeiffer  
Trista Wenger Powers  
Judge Charles W.  
Redding L.  
Phoebe Smith Redding  
Virginia Crites Rigby  
Bessie Rice Robinson  
Laurence E. Schreiber  
Vernon R. Taylor  
Rev. Ormal Trick  
Dr. Paul Trueblood  
Irene Breithaupt VanNatta

1929

Agent — Kenneth Litchfield  
Contributors — 43

Amount — \$511.50  
Dr. Reeve H. Betts  
Esther Lisle Billman  
George Birrell  
Beatrice Lockart Bliss  
J. Neil Brown  
Gurnee A. Flesher  
Dr. Frank Girod  
Donald K. Grant  
Rev. Meredith A. Groves  
Ruth M. Hall  
Ralph Harold  
Alice Lane Hopkins  
Bernice Jackson  
Dr. Charles L. Kaufman  
Mary Burns Kells  
Elma P. Kimbrell  
Clara Hercher LaViolette  
Dwight Lear L.  
Grace White Ledbetter  
W. Glen Ledbetter  
Elsie Tucker Lewis  
Lucile Rhoten Lewis  
Kenneth Litchfield  
Dorothea Peters Longston  
Marie Harold Massey  
John D. Minto L.  
Elma White Montgomery  
C. Loren Mort  
Jean White Potts  
Lois Hockett Ross  
Anna McKinley Swafford  
W. S. Swafford  
Georgia Fairbanks Taylor  
William Tweedie  
George VanNatta  
Margaret Klein Walker  
Beulah Wampler Welch  
Wayne Welch  
Carolyn Parker Weleber  
Ivan White  
Vivian Isham Wilken  
Lionel M. Woodworth L.  
Margaret Wood Woodworth

1930

Agent — Dorothy Patch  
Contributors — 40

Amount — \$548.50  
I. Leone Elliott Covert  
Garnie R. Cranor  
Dr. John K. Crnkovic  
Loretta Gaylord Fisher  
Violet Beecher Frazier  
Paul E. Geddes L.  
Joyce Kidder Gowen  
Lillian Scott Haines  
Earl Henry  
Margaret D. Hogg

Helen L. Hughes  
Lydia Childs Isom  
Katherine Everett Kaufman  
Walter Kaufman  
Wendell M. Keck  
Ben Klindworth  
Donna Hildesheim  
Kramer  
Frances McGilvra

Litchfield  
Judge Ian R. MacIver L.  
Arthur M. Mason,  
Memory of  
Emly Brown McClure  
Helen McPherson  
Yvonne Cornell  
Montehalin L.  
Dr. Marion Morange  
Fay Irvine Mort  
Kenneth H. Mosher  
William W. Mumford  
Dorothy Taylor Patch  
Dorothy Ryan Peterkin  
Rev. George L. Poor  
Florence Emmons Riggs  
Wendell L. Robinson  
Leta Hale Roehl  
Florence Power Scales  
Freda Falconer Schreiber  
Rev. Harold S. Shellhart  
Rae Windust Simmons  
Alvina Breithaupt  
Thomson  
T. Harold Tomlinson  
John E. Versteeg

1931

Agent — Norabel Miller  
Contributors — 50

Amount — \$871.00  
W. W. Balderree L.  
David O. Bennett L.  
Samuel M. Bowe L.  
Eva Gorham Craig  
Dr. Hugh B. Curran  
Esther Ross Curryer  
Francis DeHarpport  
Grace Henderson  
DeHarpport  
Loretta Varley Depew  
Margaret Schreiber Dumas  
Dr. Paul E. Ellis  
Judge Joseph B. Felton L.  
Dorothy Pemberton Flesher  
Betty Lewis Frewing  
Dr. H. Leslie Frewing  
Margaret L. Ghormley  
W. Kenneth Graber  
Evelyn High Grant  
Frank N. Grover  
Raymond Haldane  
Judge A. D. Haworth  
Hestine W. Hollister L.  
Margaret Morehouse  
Kaufman  
Georgia Striker Klindworth  
Dr. F. Howard Kurtz  
William R. Massey  
Jean Middleton McAllister  
Virginia Edwards  
McCamant  
Helen Louise Brown  
McMinimee  
Warren McMinimee L.  
Elizabeth Wechter  
McMullen  
Edith Morange Meiseger  
Harold Meiseger  
Lois Barker Metcalf  
Howard F. Miller  
Mary Allen Miller  
Norabel Pratt Miller  
Raymond L. Miller  
Beatrice Hartung Moore  
A. Lars Nelson  
Mildred Cannoy Pearson  
Stanley Satchwell  
Lola Dasch Seeger  
Ellen Mae Standard  
Frank J. Vandyke L.  
Dr. Ramond C. Waddell  
Edward C. Wells  
Hazel Burner Weren  
Elizabeth Atkinson Whitsett  
Pauline Findley Wulf

1932

Agent — Isabel Childs  
Rosebraugh  
Contributors — 45

Amount — \$611.50  
Nellie Badley Ackerman  
Paul Ackerman L.  
Dr. Floyd B. Albin  
Helen Stiles Albin  
N. Van Bateson  
Gertrude Oehler Bergman  
Edith Findley Brydon  
Joy White Buick  
Rev. William S. Burgoyne

## SUMMARY OF REGIONAL SOLICITATION

Region	Alums In Region '58-'59	Contributors	Percent
Salem	1132	461	41%
Portland	827	295	36%
San Francisco Bay Area	358	136	38%
Southern California Area	287	138	48%
Puget Sound Area	205	80	39%
Eugene	128	46	35%
Medford	57	20	35%
Grants Pass	20	18	90%

Dr. Charles S. Campbell  
Percy L. Carpenter  
Rosetta Smith Caswell  
Stearns Cushing, Jr.  
Ernest Denning  
Marjorie Moser Durham  
Donald E. Faber  
Capt. Eugene Ferguson L.  
Dr. Alfred J. French  
Lois German  
Lloyd D. Girod  
Beulah J. Graham  
Doris Clarke Hamilton  
Margery Hannah  
Eloise White Hardy  
Beneitta Edwards Harland  
Roy Harland L.  
Esther Jensen  
Collas Marsters L.  
Ellen Moody McBride  
Robert McGilvra  
Marvelle Edwards Mefford  
Claire M. Miller  
Dorothy Welsh Oliverson  
Bernice I. Orwig  
Dr. Clarence Poor  
Mildred Leighton Query  
Naoma Fleet Rehfuss  
Isabel Childs Rosebraugh  
George Scales  
Dr. Richard N. Sherwin  
Helen E. Ney Stancliff  
Lillian Graham Versteeg  
Margaret Marsh Walker  
Rowe Weber, Jr. L.  
Rev. Wayne Wright

1933

**Agent - Walter Erickson**  
**Contributors - 38**  
**Amount - \$292.00**  
Dwight Adams  
Howard Bergman L.  
Mildred Miller Bowe  
Frances Jackson Bushnell  
Barney G. Cameron  
Coralyn Brown Campbell  
Mary Louise Morley  
Carpenter  
Donald T. Clark  
Hazel Snyder Crothers  
Carolyn Braden Dashney  
Enoch Dumas  
Walter Erickson  
Dr. Arthur Fisher  
Gladys Taylor Garlinghouse  
Bernice Rickman Gordon  
Dr. Leland B. Gould  
Gilbert C. Hamman  
Helen Boardman Hammond  
Jean Smith Harris  
Ronald R. Hewitt  
Brenda Savage Hood  
Robert L. Houck  
Lewis G. Johnson  
Dr. Erwin F. Lange  
Dorothy Rose Marcy  
Frances Laws Margosian

M. E. "Gus" Moore  
Marjory O'Dell Morgan  
Margaret Notson Moser  
Katherine Earle Robertson  
Harold E. Rose  
Lucille Flanary Rose  
Marcelle Demytt Roth  
Edwin D. Rounds  
Roberta Ricks Rounds  
R. Glenn Savage  
Harriet Adams Smart  
Alvis Love Whitelaw

1934

**Agent - Richard Upjohn**  
**Contributors - 48**  
**Amount - \$527.50**  
Ruth Gillette Adams  
Rev. John E. Aschenbrenner  
Faith Sherburne  
Bercovich  
Ben T. Briggs  
Mary Scott Briggs  
Sue Pringle Bushnell  
Dr. Vernon C. Bushnell  
Marjorie Drorbaugh  
Carpenter  
Dr. Frank E. Childs  
Barbara Elliott DeGraff  
Helen Childs deLespinasse  
David Drager, Jr.  
Blair Foley Dunlap  
Frederick Edmundson  
H. Clay Egelston  
Dr. Ralph Foster  
Thomas W. Goynne  
Lowell L. Gribble  
Evans T. Hamilton L.  
Herbert Hardy  
Edith Glaisyer Hill  
Ruth Schreiber Houck  
Rev. Ross Knotts  
Midge Hewett Labberton  
Ray H. Lafky L.  
Marie Ledbetter  
Louise Fletcher Mason  
Pauline Lockhart McMahon  
Percie M. Miles  
Veva Garrett Miller  
Margaret Morris  
Kenneth Oliver  
Madaline Schmidt Oliver  
Ruth Fisk Parr  
Frances Albee Plancic  
Roberta Mills Price  
Margaret Purvine  
Reginald Rees  
Rex R. Rhoten  
Roberta Brainard Rice  
Dorothy Dalk Ross  
Lucille Miles Satchwell  
Dr. Eugene L. Smith  
Piercy Sweet  
Jessie Fukuda Tanaka  
Dr. Richard H. Upjohn  
Mary M. White  
Miles E. Woodworth

1935

**Agent - Dorothy Shinn**  
**Contributors - 34**  
**Amount - \$296.50**  
Garfield C. Barnett, Jr.  
Max Bigby  
Frances Stewart Carlson  
Dr. Paul G. Carpenter  
Agnes H. Irons Ebner  
Dr. Lowell L. Eddy  
Howard R. Ennor  
Leola Johnson Faber  
Betty Hawkins Fitch  
Edward Frantz  
Ruth Chapman Frantz  
David J. Grant L.  
Sydney Hannaford  
Gustafson  
Frank Haley  
Francis F. Flint  
Dr. Frederick Harris  
Seiko Watenabe Hasegawa  
Lorraine Sheldon Kissing  
Isobel Morehouse Lemmon  
Richard H. Lucke  
Robert S. Mealey  
Frances Schilling Miller  
C. LeRoy Mink  
David Moser  
Eleanor Yarnes Mosher  
Dr. William A. Mosher  
Luman Ney  
Anna Jo Fleming Phares  
Ethel Adam Schreiber  
Edith Sidwell Scott  
Arthur B. Smith  
Gladys Hanson Smith  
M. Eleanor Henderson  
Varney  
Karl E. Weisser

1936

**Agent - John Ross**  
**Contributors - 35**  
**Amount - \$434.00**  
Esther Black Aden  
Michael Balkovic  
Harriett Sanders Burdette  
Rev. Laurance A. Burdette  
James E. Burdett, Jr. L.  
Kathryn Wright Chenoweth  
Gwendolyn Hunt Coleman  
Galen K. Dean  
Frank deLespinasse  
Fannie L. Douglas  
Roberta Smith Dymond  
Donald J. Egr  
Dr. Harry E. Emmel  
Thorne H. Hammond L.  
Dr. Robert L. Jeffcott  
Helen Keudell Jones  
Malcolm Jones  
Bill Lemmon  
Dr. Ian MacDonald  
Esther Gibbard Manning  
Kenneth G. Manning  
Dorothy Minnich McKey  
Ray E. McKey L.  
Myrtle Wettlaufer Miller  
Dr. Waldo O. Mills, Jr.  
Lura Adkisson Morast  
Gordon C. Morris  
Carl V. Rhoda  
Dr. John M. Ross  
Doris Unruh Silkey  
Richard Smart  
Edgar T. Tweed  
Robert P. Utter  
William B. Voss  
Elizabeth Boylan Welch

1937

**Agent - Laurence Morley**  
**Contributors - 55**  
**Amount - \$517.50**  
Dwight B. Aden  
Steve Anderson L.  
James T. Barnett  
Jean Eastridge Birrell  
Helen Purvine Burnett  
Naida R. Carroll  
Jack Connors  
Lillian Graham Crist  
Ronald P. Crossland  
Jeryme Upston English  
Shirley Siegner Faith  
Rev. John Finkbeiner  
Lillian Potter Fleming  
Gwen Gallaher Grant  
Bessie C. Gregerson  
Margaret Howerton  
Gullickson  
Guy H. Heimsoth  
Winthrop C. Henderson  
Marian Wakefield Hermann  
Louis B. Hershberger  
Rev. Gene Hibbard  
Neil Irvine Keefer

Randall B. Kester  
Lucy M. Klein  
Constance Smart Kopp  
Althea Laraut Luttrell  
Marjorie Wunder Marsters  
William P. McKinney  
Helen Peterson Minter  
Laurence Morley L.  
Harry S. Mosher  
Dr. James Nakadate  
Rev. Warren W. Peters  
Mildred Walker Postl  
Earle V. Potter  
Dr. James H. Pyke  
Robert H. Ross  
Rosemary Huffman Schultz  
Jeannette Scott  
Wilfred C. Sutton  
Dr. Ely M. Swisher  
Max S. Taggart L.  
Victoria Schneider Taggart  
Betty Lou Strachan Tenold  
Dr. Ralph Thompson  
Charlotte Kallander  
Thuemmel  
Luis Turner  
Dr. Charles Versteeg  
Lois Webb Wennstrom  
Vivian M. Widmer  
Brongwyn K. Williams L.  
Helen Carlson Williams  
Harrison R. Winston  
Robert J. Yeo  
Dr. Rachael Dunovan  
Yocom

1938

**Agent - Thure Lindstrom, Jr.**  
**Contributors - 43**  
**Amount - \$306.50**  
Dr. Robert F. Anderson  
William E. Beard  
Antoinette Lambert Bose  
Rosamond Weston  
Burroughs  
Dr. Leslie J. Carson  
Charlotte Litchfield Dixon  
Margaret Hauser Ebert  
Ariss Jones Englund  
Alice Speck Estes L.  
Herman Estes L.  
Barbara Crookham Euler  
Ralph D. Gustafson  
Dr. Sam Hughes  
Charlotte Eyre Hunt  
Lunelle Chapin Kidrick  
Rev. Ralph G. Kleen  
Una Lee Kruse  
Thure A. Lindstrom, Jr.  
Helen M. Marcy  
George H. McAllister L.  
Arthur Myers  
Robert S. Nelson  
Rev. Charles S. Neville  
Mary Sargent Neville  
Willetta Smith Nielsen  
Dewey H. Palmer L.  
Dr. Almeron T. Perry  
Myron Ray  
Lorene Tompkins Reierson  
Verne Carl Reierson  
Kay V. Ringe  
Lee Rudin  
Theresa Ulrich Rudin  
Paul Silke  
Ruth Bunzow Steele  
Prof. William M. Stone, Jr.  
Dr. Howard M. Teeple  
Dr. Howard Varney  
Melvin Viken  
Lillian Hart Viken  
Richard Weisgerber  
Otto J. Wilson  
Tatsuro Yada

1939

**Agent - Karl Kahle, Jr.**  
**Contributors - 45**  
**Amount - \$539.50**  
Margaret Taylor Anderson  
Elliott Becken  
George Billings  
Jean Anunson Brady  
Kenneth Brunkow  
Werner B. Brown L.  
Charles R. Cater L.  
Kathryn Thompson Clark  
Robert B. Clarke  
Lois Burton Cleveland  
Arthur J. Gallon  
June Aasheim Gallon  
Dr. John E. Gary  
Eleanor Johnson Gillespie  
Tyrone Gillespie L.  
Norman P. Hogensen  
T. Melvin Holt  
Marian Chase Howe  
Dr. Robert G. Howe  
Carolyn Hunt Irving

Karl Kahle, Jr.  
Janice Murray Kangas  
Esther Nelsen Kraemer  
Dr. Leonard S. Laws  
Asa Lewelling L.  
Dr. Theodore E. Ludden  
Betty Craney Marion  
G. William Miller L.  
Marion Steigerwald  
Murphy  
Barbara Jones Nelson  
Dr. Phillip Pemberton  
Bingham Powell  
Gretchen Spencer Powell  
Dr. Clay A. Racely  
Margaret Gillette Shaffer  
Neil Shaffer  
Suzanne Curtis Shepperd  
Doris Darnielle Sias  
Oscar H. Specht  
Paul Sturges  
Martha Okuda Tachino  
William A. Utley  
Dr. Irvin F. Wall  
Margaret Macy Wilson  
Dr. Robert A. Wilson

1940

**Agent - Betty Anderson**  
**Contributors - 47**  
**Amount - \$479.00**  
Eileen Van Eaton Adams  
Elizabeth Starr Anderson  
Basil Anton  
Mabel Lenz Balkovic  
Maravene Thompson  
Barnett  
Verna Vosper Berg  
Ruth Tschanner Brink  
Gerald C. Burnett  
Dwight Catherwood  
Helen Neiger Cherry  
Everett Clark  
Bartlett F. Cole L.  
Dr. Herbert V. Davis  
Helena Schneider DeSully  
William G. Dick L.  
Carolyn Woods Drobot  
Donald Ewing  
Capt. H. D. Frantz  
Jerry M. Gastineau  
Marion Wakefield  
Herrman  
Dr. Max H. Hauser  
Elizabeth James Hogsett  
Dr. Harold R. B.  
Hutchinson  
Agnes Mickey Kaiser  
Albert K. Klassen  
Dr. John Laughlin  
Erma Taylor Lienes  
John R. McCullough L.  
Harlan Moe  
Gertrude S. Hughes  
Partlow  
Doris Riggs Pogue  
Ervin W. Potter L.  
Marguerite Smith Rieder  
Dr. Philip M. Rummell  
Sidney Schlesinger  
Ella Mason Scudder  
Dorothy Leeper Silke  
George J. Sirnio  
Rev. Don Ian Smith  
Tom C. Stacer  
Elizabeth Zook Stainsby  
David I. Stall  
Lorraine Vick  
D. Wallace Well L.  
Lois Herman Whalin  
Bruce Williams L.  
Betty Williams Zumwalt

1941

**Agent - Mel Cleveland**  
**Contributors - 45**  
**Amount - \$431.50**  
James Kress Anderson  
Anonymous  
Dorothy Baldwin Baird  
Walter C. Beck  
Robert G. Brady, Jr.  
William Byars  
Dr. Charles B. Carey  
Melvin H. Cleveland  
Edwin E. Cone  
Oscar L. Donaldson, Jr.  
Frances Pickard Everton  
Dr. Allan L. Ferrin  
Roger Foster  
Peter H. Geiser  
Dr. Ernest P. Greenwood  
Helen Dean Grennan  
Ann Sebring Kahle  
John Kolb  
Dr. William S. Laughlin  
Mabelle J. Lilburn  
Cdr. Richard B. McNees  
Laura Lee Tate Moe  
Muriel Smithson Moore

**THE RECORD OF THE  
LOYALTY FUND**

YEAR	NUMBER OF GIFTS	AMOUNT
1956	254	\$ 3,092.30
1957	565	6,424.99
1958	2216	63,817.40*
1959	2235	36,565.57

\* Includes \$29,000 received from anonymous donor who gave \$1,000 for every 1% increase in number of donors

Dan E. Mosee  
Warne Nunn  
Arthur G. Olson  
Thomas T. Oye  
Myron Pogue  
Jewell Minter Potter  
Audrey Shay Powell  
Robert K. Powell  
M. Eugene Reed  
Patricia Otten Reed  
Otto Skopli, Jr. L.  
Elizabeth Moser Smith  
Gayle Denison Strome  
Sam R. Sumner, Jr. L.  
Margaret Coan Terjeson  
Thomas Terjeson  
Col. Waldo E. Timm  
Genevieve Stoddard Vehrs  
Taul Watanabe  
Kath Louise Hedges  
Whitaker  
Dr. Everett Wilcox  
Frances R. Gorsuch  
Wilcox

**1942**

Agent - Cleo & Oscar Swenson  
Contributors - 67  
Amount - \$572.50  
Dorothy Moore Achor  
R. Winfield Achor  
Dr. Richard W. Achor  
Charlotte Ellingsworth  
Asianian L.  
Dr. Claude W. Barrick, Jr.  
J. S. Bohannon L.  
Carl Bowman  
Carol Clark Bowers  
Marvin Brink L.  
Hilma Breuser Byars  
Elizabeth Hamilton  
Caldwell  
Lois Moore Clement  
June Woldt Cone  
Max F. DeSully L.  
Dr. Malcolm A. Dunbar  
Luann Green Enz  
Phyllis Anderson Espey  
Grace Irene Covert Ewing  
Maurice Fitzsimons  
Arthur J. Franz  
Dorothea Greenwood  
Fravel  
Glen Fravel  
Chloe Anderson Gilmore  
Dr. Jesse L. Gilmore  
Wayne Hadley  
Marjorie Waters Hamilton  
Dr. Pyo Wook Han  
Loren D. Hicks L.  
Ruth Anunson Hill  
Thomas B. Hill  
Barbara Byrne Hughes  
Gene Huntley  
Jean Geddes Johnson  
Helen Newland Jones  
Dorothy Howe Lenon  
Anne Morris Leonard  
Robert D. Lindstrom  
Ralph E. May  
Robert S. Mealey  
Bertha Boyle Mitchell  
Gordon H. Moore L.  
Richard L. Morgan  
Greta Motzen Morley  
Rosemary Detweiler  
Murrell  
Pearl Bendiksen Norman  
Delores Netz Nunn  
J. A. Nunn  
Nadine Orcutt Nunn  
Dr. Glenn Olds

Frances Harris Parke  
Anna Lou Detweiler  
Penfield  
Dr. Robert Purbrick  
Dr. Arthur S. Rathkey  
S. Harold Schooley  
Zillah Frogley Schooley  
Cleo Nissen Swenson  
Oscar Swenson  
Hale Tabor  
Robert Voigt  
Ward E. Walker  
Dr. Marcus E. Waltz  
Avis Pick Waring  
Cecil Wickline  
Rev. James L. Wilson  
Margaret Siegmund Wilson  
Helen Acheson Wolfhagen  
Marion Sanders Woodham

**1943**

Agent - Muriel Eshleman  
Contributors - 41  
Amount - \$296.50  
Mary Jane Cutler Achor  
Robert B. Albert  
Willard Austin  
Arthur Baird  
Lois E. Baldwin  
Jane Sisson Bergreen  
Lyle Brown  
Dean H. Byrd  
Patricia Hutchinson  
Coffee  
Dorothy Tate Downs  
Dr. E. Hume Downs  
Lt. Col. Fred Ellis  
Muriel Lindstrom Eshleman  
Robert Hamilton  
Gov. Mark O. Hatfield  
Wendell A. Johnson  
Ralph J. Kennedy  
Deima Jones Klassen  
Genevieve Doud Koib  
Barbara Kester Laughlin  
Dr. Harold V. McAbee  
Donald V. McCallum L.  
Stuart McElhinny  
Carlton J. McLeod  
J. Wallace Olson  
R. Merle Palmer  
Ancil H. Payne  
Harriett Monroe Peterson  
Nancy Ann Boles Peters  
Dorothy J. Calderwood  
Petrequin  
Coe Roberts  
Lois Gladden Roberts  
Andrew Rogers  
Harriet Crawford Siewert  
Hall J. Simons  
Reeva Schmidt Spies  
Lt. Comdr. Richard Stacer  
Flora Leonard Stoltz  
Ruth Matthews Tabor  
Olivia Olson White  
Jean Moore Williams

**1944**

Agent - Sybil McLeod  
Contributors - 35  
Amount - \$197.50  
Ammon Adams  
Helen Zimmerman Adams  
Darlene Dickson Albert  
Dr. John Beebie  
Wade P. Bettis  
Barbara Pitts Bowles  
J. Warren Carkin  
Marjory Maulding  
Coughanour

Janet Hagglund Craine  
Robert E. Edwards  
Richard Espey  
Dorothy Estes  
Anthony J. Fratola  
Dr. James A. Garson  
Marion Cake Grosvenor  
Shirley McKay Hadley  
Frank J. Healy L.  
Eloise Findley Homewood  
Marcia Fry Johnson  
Mary Owen Kortemeyer  
Ruth Finney Laughlin  
Paul Libby  
Phyllis Gueffroy Llambias  
Leroy C. Long  
Dr. F. Keith Markee  
Dr. Kent Markee  
Sybil Spears McLeod  
Marjorie Weber Newell  
Susanne Wilson Newell  
Sam Orcutt  
Nancy Stricklin Rowe  
Ralph A. Rude  
Rev. Ray E. Short  
Dr. Richard Springer  
Gladys Crawford Stern

**1945**

Agent - Sally Orcutt  
Contributors - 37  
Amount - \$253.50  
Bernice Elgin Anderson  
Mary E. Bennett  
Dr. Stanley A. Boyd  
Stanley J. Buch  
Martha Warren Burdette  
Bette Burkhart Buzouch  
Dr. William B. Cate  
Eunice Masee Davis  
Merritt E. Diehm  
Emma Lou East Donovan  
Warren Doolittle  
Acacia Wing Ebbesen  
Theodora Nelson Edwards  
Elaine Murray Ellis  
Polyanna Shinkle Findley  
Robert S. Findley  
John H. Glasse  
Lois Robinson Hogmer  
Mary Acheson Libby  
Miriam Ferrin Lidell  
Lillian Oliver McLaughlin  
Sally McClelland Orcutt  
Robert E. Ratcliffe L.  
Jean Carkin Sanesl  
Marion Carter Showers  
Catharine Thomas Smith  
Rev. Nevitt B. Smith  
Aileen Hutchinson Steeves  
Richard Steeves  
Abe L. Steinbock  
Madeline Simmons  
Strickfaden  
Dr. C. C. Strong  
David M. Teeter  
Helen Thomas  
Lyle A. White  
Richard Wicks L.

**1946**

Agent - Bill Stortz  
Contributors - 32  
Amount - \$152.00  
Ina Monroe Aden  
Shirley Blackman Barber  
Delvon Long Barrett  
Mary Jean Nims Beegle  
Thyra Currey Boyd  
Janice Patterson Cate  
Betty Balch Corey  
Dr. David R. Davis  
David C. Demeter  
Patricia Lamb Doolittle  
Dr. Roy A. Fedje †  
Ruth Farmer Feinberg  
Merrie Lou Hilton Felton  
Jane Huston Fitzsimons  
Dr. Don Fox  
Roberta Yocom Fox  
William R. Habernicht  
Dorothy Hall  
Dr. R. Dale Hunsaker  
June Eggiman McCullum  
Marjorie Hill McElhinny  
Elizabeth Jory Nicholson  
Dr. Ivan Nye  
Douglas V. Ojds  
Alice Daugherty Peterson  
Dr. Frank R. Peterson  
Myrtle Pyman  
William J. Stortz L.  
Betty Randall Strong  
Olene Mehlhoff White  
Dr. Charles Wicks  
Miriam Day Wicks

**1947**

Agent - Doris Wilson  
Contributors - 57  
Amount - \$354.00  
Betty Louise Sinkola Acton  
Winser P. Acton  
Nancy Hoak Akeson  
Jerry Anderson  
Eveyn Chapman Back  
Mary Ann Wittliff Bader  
Lorraine Murdock Bailey  
Donald E. Barnick  
Donald Beegle  
Dr. Frank M. Bennett  
Barbara Mary Causey Butte  
Gilbert J. Clausman  
Patricia Mansfield Cooke  
William H. Cooke  
Marion W. Crews  
Ann Elliott Denny  
Robert Donovan  
Patricia Otis Dyke  
Lona Batson Edwards  
Adele Louise Egan  
James H. Elliott  
Robert M. Fletcher  
Capt. Robert T. French  
Blaine Grumm Hatfield  
Lloyd F. Heimsoth  
Marion Erikson Hood  
Virginia Cannon  
Humphreys  
Dr. Wayne E. Jacobson  
Dr. Donald Jeppesen  
Dale E. Jones  
Hester Linn Lafky  
Laura Curtis Lafky  
John A. Macy  
Margaret Wain Markee  
Lawrence Merrill  
Virginia Hobbs Meyer  
Veiora Williams Morris  
Dr. Harold Nevin  
Eveyn Johnson Page  
Rupert E. Park L.  
Elizabeth Hansen Pursinger  
Eveyn Deal Roberts  
Mary East Runyan  
Ronald Runyan  
Marion Reamer Sanchez  
Mary Kanoff Skrobiza  
Georgia Hull Spooner  
Dr. Thomas L. Stern  
Verna M. Stocks  
Elma L. Tingiestad Stortz  
Jack Strickfaden  
Nancy J. Stuart  
Clarence Wicks L.  
Patricia Carter Wilhelmi  
Burton R. Willeford  
Ollie Williams  
Doris Gwin Wilson

**1948**

Agent - Jim Hatfield  
Contributors - 49  
Amount - \$284.50  
Anonymous L.  
Kenneth H. Arnot  
Dale A. Bates  
Lora Robinson Bates  
Darlene Simmons Boyd  
Lucie Veelman Brownell  
Capt. Nedry V. Burris  
Laura Bates Carlson  
Eveyn Jory Clawson  
Thayne W. Cole  
Marcus S. Crunican  
Stuart H. Compton  
Rev. Donald Douris  
Henry M. Ercolini  
Merlin Estep  
Leighton C. Fairham  
Patricia J. Miller Fletcher  
Rev. Raleigh Gourley  
Fred Graham  
Dr. Robert E. Guild  
Earl Hampton  
James C. Hatfield  
Elizabeth Olson Hill  
Dr. David M. Holmes  
L. Don Hunsaker  
Frances Foote Jeppesen  
Ethel Larson Jones  
Stewart V. Leek  
Donald E. Link  
Herbert Lucas  
Troy E. McGowan  
E. Daniel McLaughlin  
Geraldine Spiegle  
McLaughlin  
Dr. Ward C. Miles  
Virginia Wyche Morton  
Patricia Kenney Pardey  
Joyce Furman Patton  
Mary Parker Robison  
Caroline Cooper Saunders  
O. J. Sparrow  
John F. Stockman  
Margaret E. Stone  
Dr. Allan E. Voigt

Mary Jean Fisher Wenig  
Paul Whitmore  
Albert E. Wickert  
Dr. L. C. Winterschied  
Muriel Oliver Winterschied  
Marion Denson Yasinitzky

**1949**

Agent - Marilee Morgan  
Contributors - 88  
Amount - \$573.50  
Eloise Rarey Adams  
Dr. Merle Akeson  
Donald L. Alderton L.  
Frederick A. Anderson  
Robert A. Bailey  
Martin A. Barstad L.  
Dr. J. Kenneth Bartlett  
Ota D. Binegar, Jr. L.  
Dr. William R. Bonnington  
Victor C. Bovelie  
Pauline J. Bristlin  
Vera Jack Cook  
Dr. Richard B. Cravens  
Capt. Charles E. Crecellus  
Beverly Briggs Cross  
Travis Cross  
Joan Morgan Darou  
Harriet Ness DeSeranno  
Patricia Holtz Fairbank  
Eric Fitzsimons  
Marjory Stockman Gossler  
Vee A. Gould  
Rev. Meredith R. Groves  
Edith Fairham Gunnar  
Orval O. Hager, Jr. L.  
Gwendolyn Harper  
Cloyd Harrell  
Barbara Nelson Hartley  
Marjorie J. Hawkins  
Russell Heiterime L.  
Will J. Henderson  
Marvell Degure Holman  
Vinita Howard  
Carol Dimond Hunsaker  
George C. Hurt  
Joyce McCracken Huston  
Sam Huston  
Olive Hiday Jimison  
Dr. R. Holmes Johnson  
Robert W. Johnson  
Guy W. Jonas, Jr.  
Alice Rose Jones  
Ira Jones L.  
Jesse M. Jones  
Alfred F. Ladendorff  
Addy Lane  
David A. Lewis  
Edward C. Lind  
Eugene L. Lowe  
Marybeth Snow Lucas  
John W. Lyles  
Joan Thomas Macy  
Leonard Maurer  
Barbara Miller McCoy  
Hugh W. McElhinny  
Donald W. McEwen L.  
Elizabeth Guttridge  
McMullen  
Charles K. Mills  
Helen K. Montag  
Dale Morgan  
Marilee Olson Morgan  
Capt. Jerold G. Muikie  
Frank H. Newell  
Dr. James A. Nickel  
Richard M. Page  
Alex L. Parks  
Alan R. Patton  
Marjorie Powell  
Fred H. Ratzburg  
Robert Rhoads  
Dr. Kenneth M. Robertson  
Gerald M. Robison  
John Roth  
Dona Adams Rothwell  
Stanley D. Ryals  
Eugene F. Schmidt  
Major Richard Spooner L.  
Barbara MacDuffee Tripp  
John M. Watts  
Virgie Buzzard Wicks  
Ethelyn Ellis Wilcox  
Betty Mae Jackman Wilson  
Dr. James A. Wilson  
Stuart F. Wyde L.  
Lowell L. Yeager  
Don W. Yocom  
Richard Yocom  
Rev. Vernon A. Zernes

**1950**

Agent - Ellen Miller  
Contributors - 92  
Amount - \$513.50  
Roger Adams  
Lois Dokken Anderson  
Daphne Lekas Atkinson  
Ray N. Atkinson  
Joan Cloudy Banta

## BANNER CLASSES

### Amount Contributed

CLASS	AMOUNT	AGENT
1924	\$1,000.00	Notson
1922	871.50	Jackson
1931	871.00	Miller
1956	814.00	Ray
1926	800.00	Barton
1923	775.00	Downs
1925	705.00	Barquist
1958	699.36	Short
1932	611.50	Rosebraugh
1927	600.25	Mason
1949	573.50	Morgan
1942	572.50	Swenson
1930	548.50	Patch
1939	539.50	Kahle
1955	634.25	Steeves
1934	527.50	Upjohn
1937	517.50	Morley
1950	513.50	Miller
1929	511.50	Litchfield

Donald E. Bareckley  
Nancy Whitmore Bareckley  
Lawrence W. Barham  
Dean Barnhart  
William R. Beck  
Arlene Zastera Bennett  
Robert B. Bennett  
Richard Blois  
Paul W. Bolliger  
Alvin H. Boyd  
James D. Branson  
Dr. Joseph V. Brazie  
Donald R. Breakley  
Ed J. Cairo  
William D. Carlson L.  
Robert E. Carolan  
Philip S. Chambers  
Dr. Dale G. Cleaver  
Gordon C. Cline  
Marjorie Peihl Cloudy  
Claude Coffman  
Norma Faaboig Cole  
Paul B. Cole  
Henry F. Cooper  
Dr. Thomas H. Cooper  
Lois Mulcahy Estell  
Alfred M. Fedje  
Polly Pollock Fedje  
Marge Cooper Fleck  
Dr. Landy Franz  
Dean C. Gatewood  
Dorothy Hobson Graham  
Peter M. Gunnar L.  
Homer W. Hadley  
Ruth E. Hagelstein  
Mary Frances Libby Hales  
Dr. Lyle H. Hamilton  
Marshall W. Hanft  
Richard Hartley  
Frank Holman  
Addie Lou Snoddy Holmes  
Kenneth A. Holmes L.  
Bettyella Leffles Holyfield  
Florence Ferrey Kubin  
Berkeley Lent L.  
Betty Leonard Lund  
Lt. Jg Pat A. McCargar  
Dr. Raymond D. McCoy

William J. McDonnal  
Dale McLellan  
Virginia Baik McLellan  
Albert R. McMullen L.  
Calvin Middleton  
Ellen M. Miller  
Shirley Allen Minn  
Thomas T. Nakagawa  
Doris Walser O'Neill  
Robert O'Neill  
Marcella J. Pambrun  
Richard W. Pic Kell L.  
Maxine Muckle  
Pietsechman  
Gordon R. Pratt  
LaFyrne Showacy Pratt  
Louis A. Ramus  
John G. Ringle  
Robert O. Robertson  
Roy Shelton  
Doris Gragg Sherry  
Marjorie Quamme Singleton  
Robert Singleton  
John Slanchik  
Sophie Guyton Smith  
Glen Sorenson L.  
Grace Morton Sparrow  
Leland W. Svarverud, Jr.  
Margaret Austin Taylor  
Russell Tripp  
Elizabeth Mountcastle  
Turner  
Scott Turner  
Delores Bauer Turville  
Beverly Wadsworth  
Irving J. Wagner  
Frank M. Washburn  
D. Wallace Weil  
Tom L. Yates  
Marilyn Townsend Yocum  
Ben Younglove

1951

Agent — Florence Makey  
Contributors — 79  
Amount — \$428.50

Leslie L. Aldrich  
Burnell Ambrose  
Robert H. Anderson L.  
Stanley E. Aschenbrenner  
Patricia Curtis Bartlett  
Thomas A. Bartlett  
Jean Rickli Bolliger  
Donald R. Brand  
Pearl Mann Breakley  
Jack R. Brown  
Jacqueline Chute Calkins  
Donald Carpenter  
Dr. James F. Carpenter  
Stanley O. Chambers, Jr.  
Jeneane Christensen  
Cherry  
Marjorie Moore Coffman  
Marion Sparks DaBoil  
Joan Holbeck Dennis  
Richard E. Endsley  
Dr. Donald B. Eshleman  
Alan C. Goudy  
John B. Gunn  
Sara Louise Smith Gunn  
Omar W. Halvorson L.  
Frank J. Hedges  
Edna Jernstedt Henry  
Wayne Hilliard L.  
Morris R. Hunsaker  
Sally German Huntley  
Eleanor Loveless Johnson  
Douglas E. Kaufman L.  
James D. Lacey  
Joseph Larkin L.  
John R. Lewis  
Jeanne Louise Dubuy  
Lukinbeal  
Howard Mader  
Florence Goodridge Makey  
Dene Mallory  
Gordon E. Mallory  
Stanley Marchington  
Nancy Phillips Marshall  
Marques McClanahan L.  
Major Leonard J. McCoy  
Alice Turtledove Meyer  
Albert Miles  
Dr. Robert S. Miller  
Conrod T. Miner  
Albert Minn  
James B. Minturn L.  
Patricia Zahare Murray  
Janet Stark Nicoll  
James K. Noa  
Dr. Gilbert V. Oliver  
Patty Jo Hammond Oliver  
Steve Paulus  
Rev. David Poindexter  
Marian Sayre Poindexter  
Pauline Morse Rock  
Dr. William M. Ross  
Barbara Robinson Ryals  
Carolyn Biederman Saxe  
Robert Skirvin  
Robert E. Smith L.  
Richard Stratton  
Walter A. Stauffacher  
Wesley H. Stauffer  
Robert Taylor  
Margaret Guice Thomson  
Scott Thomson  
Astrid O. Tarem Toomepui  
June Swanson Tyler  
Esther Weinstein  
Martha Bernard White  
Robert L. White  
Susan Coggeshall Whiting  
Dorothy Karnes Whitmore  
Edwin A. York L.  
Albert N. Younglove

### 1952

Agent — Sue Juba  
Contributors — 90  
Amount — \$388.50

Capt. Richard C. Bennett  
Anne Swanson Benson  
Donald J. Benson  
Suzanne Older Benson  
M. Sherman Bliss, Jr.  
Joanne Oliver Block  
Gladys F. Blue  
Wallace L. Boe  
Felix Calkins  
Bertrand J. Close L.  
Charles L. Cloudy L.  
Ivan H. Corner, Jr.  
Mark F. Cotton  
Mary A. Howe Covert  
William W. Covert, Jr.  
Darrell Crossler  
Rose Marie Wilhoit  
Cunningham  
Barbara Gertson  
Shirley Hansen Fawcett  
Edward L. Fitzgibbon L.

Phil H. Gallo  
Arlene Deakins Gatewood  
Margaret Baker George  
Michael D. Glenn  
Mary Stephens Grinnell  
Charles H. Gutzler  
Bonnie Haitt Halliday  
Roger Halliday  
Phillip E. Hammond  
Walter Hart  
James Hartley  
Robert V. Hearn  
Wesley R. Hedeem  
Martha Hooker Helms  
Dean Henderson  
Janice Middleton Hiebert  
Vern Hiebert  
Harley H. Hoppe  
Jean Shepherd Hunsaker  
Dr. Clyde Jackson  
Robert P. Jones L.  
June M. Kelder  
Betty Kostenbader  
Rev. Jack Larson  
Frances Linton  
Doris McCain Loder  
Rev. Ted Loder  
Ellen Christiansen Lowe  
William L. MacDougall  
Jacqueline Johnson Mader  
Leta Adams Marchington  
Beverly Tribble Markoskie  
Lt. John Markoskie  
Donald F. Marshall L.  
Gene Maudlin  
Betty Skirvin Merstrom  
Dr. Alan G. Miller  
Dan Montag  
Jean Kell Montag  
David H. Morris  
Dorothy Capar Murphy  
Gayle Juve Nelson  
Douglas Nicoll  
Paul S. Nieswander, Jr.  
Frieda Carlson Nusom  
Dale Nusom  
Robert L. Olson L.  
Patric W. Paddock  
Myron R. Parr  
Howard Payne  
Herman A. Peters  
Glenn D. Ramirez  
William L. Ready  
Claribelle Easton Ross  
Robert M. Schaefer L.  
Donna Grace Stoddart  
Seemann  
Audrey Bliss Selby  
Wallace Snyder  
Carlotta Hendricks  
Sorenson L.  
Harry Summers  
Ron Symons  
Jerry E. Taylor  
John W. Vanderwal  
Margaret Gastinger Wallace  
Carmalite I. Weddle  
Robert L. Witham  
Shirley Hall Wood  
JoAnne Estey Yates  
Dr. E. Vance Yung  
Alex Yusha

### 1953

Agent — Don Scarborough  
Contributors — 88  
Amount — \$475.75

Jo Ann Richardson Adams  
Dr. Kenard Adams  
Jean Crakes Ambrose  
James G. Armson  
Joyce Edgell  
Aschenbrenner  
Robert W. Atkinson  
Lt. Robert V. Bain  
Jean Stewart Brown  
George L. Buland, Jr.  
Donald Buss L.  
William C. Butte  
Alcetta Gilbert Campbell  
Catherine Person  
Carstensen  
June Christensen  
Rollin J. Cocking  
Jane Pinkerton Cotton  
Wilma J. Munger  
De Mouly  
Elizabeth Morley Douris  
Amaryllis Lilles Drougas  
George R. Duncan, Jr. L.  
James R. Ellis L.  
James E. Freeman, Jr.  
Delmer L. Githens  
Clifford C. Gregg, Jr.  
Joy Koeppen Gugin  
Beverly Moody Hampton  
Jack Hande  
Eugene C. Hansen  
Margaret Smith Hardman  
Joyce Taylor Hedeem  
Marie Corner Hitchman  
Barbee Sherman Hodgkins

Beverly Hutchison Holmes  
Richard S. Isaak  
James P. Jackson  
Eloise Arden Roseberry  
Jewell  
Rev. Paul O. Jewell  
Dorothy I. Judd  
Anton Kalez  
Eli Kapostins  
Rev. Jack L. Kiekel  
Lt. Keith D. Lawrence L.  
Rev. Kent D. Lawrence  
Lola M. Brooke Lawson  
Norman R. Lawson  
James C. Maletis L.  
Joanne Bunnell Marschat  
Richard Mase  
Gloria Kainu McFadden  
Mary E. McLaughlan  
Ann Shidell Mueller  
Ann Klindworth Nelson  
Eleanor Oakes  
David R. Parton  
Capt. Robert E. Pattison, Jr.  
Dr. Tomm H. Pickles  
Dona Mears Platenberg  
Robert I. Platenberg  
Ursula M. Glaesser  
Purbrick  
Robert M. Redding L.  
Delores Gustafson Reed  
Frank D. Riebe L.  
Philip H. Ringle, Jr. L.  
Esther Perkins Roake  
Donald E. Robinson  
Jane Foosee Sanford  
Donald Scarborough  
Dr. Thomas M. Scheidel  
Hellmuth G. Schrema L.  
Robert W. Shepard  
Richard Simpson  
Norvada Smedley  
Lawrence C. Smith  
Mary Lou Ratcliff Smith  
Mary Ellen Phillips Snyder  
Fred Sproule  
Patricia Faber Stratton  
Donna Sebert Talus  
Robert A. Ulrich  
Janet Rogers Waite  
Robert C. Wall L.  
Charles E. Wallace  
Dorothy Englehart Weisser  
Dr. Robert D. Wilson  
Joan Dingman Wride  
Lorna Wallace Young  
Ardith Bailey Younglove  
Wilma Aller Zicker

### 1954

Agent — Joan Crossler  
Contributors — 82  
Amount — \$425.50

Robert A. Anderson  
Cynthia Lee Arpke  
Paul Baker  
Robert Batchelder L.  
Ronald W. Bartlett  
Betty Foster Bishop  
Wayne H. Blair L.  
Mervin Brokke  
Robert R. Brown  
Don L. Cantrell  
Mary Campbell Carlson  
Calvin C. Cooper  
Phoebe Wilson Cortessis  
Frances Graham Cox  
Joan Currie Crossler  
Marcella Barnes Davis  
Nancy L. Doughton  
Donald E. Drake  
Donald Empey  
Joyce Frost Endsley  
Donna Cheney England  
Half Erlandson L.  
Glenn A. Geurts L.  
Layton J. Gilson  
Patricia Harris Goff  
Robert C. Goff  
Douglas F. Gordenier  
Linda Gragg  
Jane Notson Gregg  
Donna Jean Cheldelin  
Gutzler  
Joseph Hardman L.  
Joseph S. Harvey  
Mary Lou Johnson Harvey  
Marie Deetz Henning  
James H. Hitchman  
Marilyn Harris Hoffman  
Robert W. Howe  
Norma Erickson Hulett  
Mary Alice Andreson Janis  
William O. Jessup  
Harold J. Lance L.  
Marilyn Meiseger  
Harriet Bennett Mfler  
Delores Ellen Miller Myers  
Kent C. Myers  
Edna Hill Natkin  
Hugh B. Nelson  
Marilyn English Nelson

**CLASSES RATED ACCORDING TO PERCENTAGE OF PARTICIPATION**

CLASS	%	CLASS	%
1912	82	1939	40
1916	65	1946	40
1919	63	1935	39
1925	60	1947	39
1921	59	1949	39
1929	59	1917	38
1934	57	1945	38
1924	56	1942	37
1913	54	1928	36
1923	54	1954	36
1933	53	1944	35
1920	51	1936	34
1922	51	1940	34
1914	50	1950	34
1918	50	1951	33
1926	50	1941	33
1937	50	1953	33
1931	49	1955	33
1932	48	1958	32
1927	45	1948	31
1930	45	1952	29
1938	43	1956	29
1943	43	1957	28
1915	41		

Percentage figures are based on the total number of graduates and former students for which the alumni office has correct addresses.

Carolyn Crane O'Conner  
Charleen Asvik Oerding  
Walter F. Oerding, Jr.  
Robert Packwood  
Harriet M. Parcher  
Laurence Peterson  
Robert Peterson  
Howard A. Pehrman  
Gordon H. Price L  
William Pritchard  
Marjorie Leonard Ruud  
Richard Satter  
Merlin D. Schulze  
Rev. Stuart Shaw  
Byron Sittser  
Mary Polales Standifer  
Barbara Manley Steel  
Ann Gibbens Stout  
George G. Strozut, Jr.  
Lorraine Lauber Summers  
Jack Tilton  
Leona Todd  
Stanley M. Vanderwal  
Ellis R. Von Eschen  
Lt. Erwin A. Weber  
David H. Wheeler L  
Doris Shelburne White  
Lyle Wilhelm  
Richard Wilkins  
Dr. Arthur Wilson, Jr.  
Howard Wilson  
Betty Breakey Witham  
Barbara Young  
Johanna Beckham Zeller

1955

Agent - Gail Steeves  
Contributors - 87  
Amount - \$534.25

Richard O. Adams  
Lt. Robert L. Alfred  
Richard Barber L  
Donald R. Bartell  
Gerald Bartz L  
Jeanene Findley Bartz  
Miriam L. Bednarz  
Donald W. Berney  
Elizabeth Lindley Carlson  
Charles B. Carter  
George Chambers  
Judith Finch Cooper  
Carolyn Kremer Cooper  
Kenneth W. Cooper  
Nancy Yant Dachi  
Neil E. Daugherty  
William James Daw L  
Richard F. Drake  
Robert J. Dyer  
Patricia Sundstrom Ellis  
Adele Lampson Fletcher  
Thomas W. Foster  
Wayne Frederickson  
Elizabeth H. Gilbert  
Mary Jo Ewell Gilson  
Donald M. Gragg  
Rosemary Rowell Grover  
J. Wallace Gutzler L

William K. Hagemeyer  
Rev. Dale C. Harris  
Kenneth B. Haevernick  
Lt. Jg Kent E. Holmes  
Watson B. Hovis  
Loyal D. Howard  
Marjorie Wood Howard  
Julia Fullager Hume  
David R. Jackson  
Lynn Wence Jaeger  
Beatrice Kaufman  
John M. Kent  
Al Laue, Jr. L  
Dick Lewis  
Barbara Jackson Machado  
William C. McKinney  
Julie Mellor  
Ruben J. Menashe  
Gerald C. Nelson  
Robert F. Nichols L  
Jack Phipps  
Earl L. Pickett, Jr.  
Joyce Schmitz Pickett  
Jackie Prall Grubb  
George L. Richards  
Gerald A. Rolph  
Nancy Hanson Rosenbalm  
Charles A. Ruud  
E. Burke Samuelson, Jr.  
Albert B. Sanchez L  
Sally Jo Grimm Schaefer  
Frances E. Smith Scheidel  
Tom Schrock  
Charles H. Seagraves  
Jo Ann Howard Seagraves  
Elizabeth Loving Sittser  
Barbara Sloan Smith  
Jackie Meadows Shaw  
Larry Standifer  
Gail Updike Steeves  
Henry Stevenson  
Robert S. Stone L  
Marie DeHarpport Tayler  
Robert E. Tayler  
Nancy F. Taylor  
Gordon E. Teter L  
Jean Thomas  
Ernest Tyler  
Sally Cooney Underwood  
Ronald A. Watson L  
Rosemary Weaver  
John F. Weisser L  
Rev. Thomas M. Whitehead  
Pat Williams  
Marilyn Witham  
Judith A. Wood  
Ronald D. Wootton  
Keith C. Wright  
Tom Yoshikai

1956

Agent - John Ray  
Contributors - 74  
Amount - \$814.00

Anonymous  
Ardys Bomke Baker  
Gerald M. Baker  
Frances Miller Batchelder  
Bernard F. Bednarz L  
Dean K. Benson  
Judy Mortz Benson  
William S. Bjorkman  
George S. Biele  
Donald Brader  
Margaret Huson Brown  
Willard K. Carey L  
1st Lt. Norman D. Cocking  
Thomas L. Cooney L  
Paula Harmer Cranor  
William L. Cranor  
Chester Daniels  
Daniel Dearborn  
Frank L. Dobbins  
Harmon Duncan  
Mary Catherine Reeh  
Empey  
Carol Hewitt Erickson  
David Finlay  
Joanne Terhark Finlay  
Paul N. Geisel  
Daryl R. Girod  
Roberta Graham  
Dale R. Gustafson  
Sally Bridgeman  
Gustafson  
Lorraine Landrud  
Halverson  
Donna Brandt Hande  
Carla McKeen Harris  
Lt. Peter C. Harvey  
Donald G. Hobson  
Donna Knox Hobson  
Alma Felton Howe  
Sally Hughes  
Robert J. Johnston  
William J. Juza L  
Donald E. Keiper  
Maxine Brown Kent  
Harold L. Lang  
Sheila Ryan Laue  
Diane Bulman MacDonald  
Wesley R. Malcolm

Amy Girod Mase  
Horace K. Mazloom  
Jon P. McConnell L  
Charlene Miner McHarg  
Robert P. Mobley  
Frank A. Moore, Jr.  
Sarah Venegas Moore  
James R. Morgali  
Shirley Ann Witters  
Murray  
Ray A. Myers  
Floyd E. Ogden  
Raymond L. Owens  
John Ray  
John A. Rehfuss  
Dale L. Patton  
Gino Pieretti L  
Janice Weber Reeder  
Coralie Doughton Rhoten  
David Rhoten  
Georgene Bettis Scott  
Thomas W. Steeves  
Marilyn Ludlow Stevens  
Herbert A. Templeton †  
Millicent Tower  
Cecll G. Weaver  
David S. Wood  
Savanne K. Wood  
Janet Moyer Wooten  
Robert W. Zoelch

1957

Agent - Ed Boothby  
Contributors - 80  
Amount - \$234.86

Robert R. Allen  
David Amsberry  
Richard Artz  
Marilyn Hanthorn Baker  
David S. Barrows  
Lewis Beatty  
Bruce O. Bleckert  
Jack L. Bishop  
Edwin L. Boothby  
Gary H. Burd  
Diane C. Burkland  
James A. Carey  
Ann Notson Carter  
Joyce Ambler Carter  
Maxine Beagle Chambers  
John Chi  
Charles W. Colling  
Barbara Franzwa Cook  
Fred Cook, Jr.  
Louise Delano Cram  
Robert Cram  
Richard B. Crittendon  
A. Curtis Culver  
Dale DeHarpport  
Ann Denman  
La Rea J. Dennis  
John Edmundson  
Patricia Turner Edmundson  
Paul Edwards  
Eldon Erickson  
R. Pat Farley  
Allen D. Feller  
David G. Frost  
James D. Geddes  
Nancy Lagen Geddes  
Harvey W. Gibbens  
Pamela Pallin Gibbens  
Louisa Lamb Girod  
Dale Greenlee  
Gene Groves  
Carolyn J. Milner  
Herzinger  
Elizabeth Hess  
Judith B. Hitt  
Flossy Hodge  
Doug Houser  
Maryn Stookey Hovis  
Joanne Jene  
David G. Johnson  
Jack V. Jones  
Marilyn Mee Jones  
Sally Jones  
Robert E. Joseph  
Fred Kauffman  
William A. Kirkman  
Donald F. Laws  
Donna M. Leonard  
Larry Lister  
Gary E. Lockwood  
Gayle Rogers Lockwood  
Thomas R. Loree  
Roy Maltby, Jr.  
Tom L. Murdock  
Glenn Murray  
William S. Neel  
Don Peterson  
Theodore Primrose  
Carol K. Litchfield Rehfuss  
Stuart W. Richardson L  
Joseph F. Ricks  
Don Ross  
Gary Schmale  
Mary Ann Schoessler  
James M. Scott  
Marjorie Wilson Shaffer  
Paul E. Shaffer, Jr.

Volney G. Sigmund  
Gene Stunz  
Jean Whiteside  
Raymond O. Youdan  
Norman Zeller

1958

Agent - Dean Short  
Contributors - 77  
Amount - \$699.36

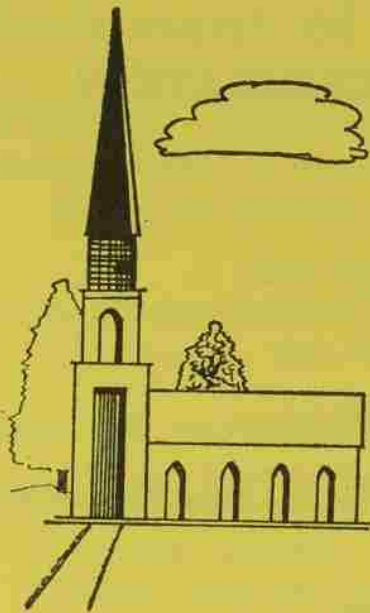
Lt. Gerald Ackerson  
Anita Eichman Adams  
Gary Adams  
Laurel "Skip" Alexander  
"Mac" Baker  
Ann Barber  
Sharon Bates  
John K. Bowker  
Larry J. Buckner  
Alex Byler L  
Minalou Schultz Byler  
Anna Rosbergs Campbell  
Robert Campbell  
Warren Campbell  
Annette Carson  
Elizabeth M. Carter  
Elizabeth Chambers  
Fred Chambers  
Koon Imm Ching L  
Karl Clinkenbread, Jr. L  
Dale B. Cubbison L  
Paulie Guindollet Drayton  
Dean Klarr  
Eugene Corey  
Elaine Gustafson  
DeHarpport  
Judith Eberhardt  
Pat Taylor Erbes  
Edwin C. Everts  
Mary Higley Eyerly  
Mary Beth VanCleave  
Feller  
Colleen Chilcote Foster  
Barbara Mitchell Foster  
George S. Frum L  
Barbara Goodier  
Robert D. Hefferman, Jr. L  
George W. Hoyt  
Gerald G. Johnson  
Ronald K. Kingsley  
Mary Lou Krause  
Lola Lane  
Ann Lawson  
Constance Clark Lister  
Elizabeth Jean Martin  
Larry Martin  
Miriam Mathews  
Charles McClure  
Jeannine Graber Mercer  
Kendrick Mercer  
Anastasia Michaelides  
Muriel Miettunen  
Shirley Minten  
Larry Mooney  
Marilyn Morton  
Lo Ann Mundinger  
Stephen Nason  
Donald Palmer  
James Person  
Anita Booth Peterson  
Suzy Platt  
David E. Poff  
Joanne Lindstrom Ross  
Dixie Ruud  
Barbara Swegart Short  
Dean Short  
Albert Siebert  
Donald Somner  
William Southwell L  
Robert Stevens  
Frank Tannehill  
Robert E. Thompson L  
Daisy Lim Tschang  
Mary Louise Turner  
Dr. Robert B. Watts †  
Richard White  
Diane Wickstrom  
Lt. Donald Wilcox  
Anne Yoder

1959

Carole Warren Ackerson  
Anne Cooley  
Jane Brader Palmer

1960

Nancy Daly Alexander  
Arleen Niemi Boothby  
Miriam Daum McClure  
Mary Kathleen Harris  
Wilcox



## METHODISM'S FINEST YEAR FOR WILLAMETTE SUPPORT

1958 - 1959

- 95 Oregon Methodist Churches, through local budgets and offerings, gave Willamette \$9,420.75.
- Conference support from World Service totaled \$11,525.00.
- The average per member giving was \$0.41.
- 3 churches exceeded the church-adopted minimum goal of \$1.00 per member for Higher Education. They were Forest Grove, First Church, Salem and Sellwood, Portland.

### CHURCH SUPPORT 1958-59

#### EUGENE DISTRICT

Canyonville  
Cave Junction  
Coburg - Unity  
Cottage Grove  
Days Creek  
Dillard  
Trinity, Eugene  
Grants Pass  
Junction City  
Klamath Falls  
Klamath Indian Mission  
Lakeview - Paisley  
Medford, First  
Myrtle Creek  
Myrtle Point  
North Bend  
Roseburg  
Springfield  
Talent  
Wilderville

#### FOREST GROVE DISTRICT

Astoria  
Banks  
Canby  
Capitol Hill  
Clarks - Carus  
Cornelius  
Donald - Wilsonville  
Estacada  
Forest Grove  
Garden Home  
Hillsboro  
Metzger  
Molalla  
Nehalem - Wheeler  
Newberg  
Oak Grove  
Oregon City  
Oswego  
Pleasant Home  
Sherwood - Ebenezer  
St. Helens  
Tigard  
Tillamook  
Tualatin  
Willamette  
Woodburn

#### PORTLAND DISTRICT

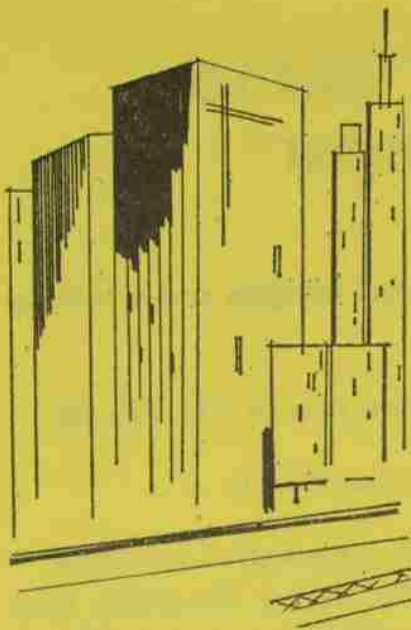
Arlington  
Fossil  
Gresham  
Heppner  
Hermiston  
Hood River  
Odell  
Pendleton  
Pine Grove  
Weston  
PORTLAND:  
Bennett Chapel  
Errol Heights  
Portland, First  
Fremont St.  
Hughes Memorial  
Lents  
Linnton  
Montavilla  
Parkrose Heights  
Rodney  
Rose City Park  
Sellwood  
St. Johns  
Sunnyside  
University Park

#### SALEM DISTRICT

Albany  
Amity  
Bend  
Dallas  
Gilchrist  
Halsey  
Harrisburg  
Independence  
Jefferson  
Lebanon  
Lyons  
Madras  
McCabe  
McMinnville  
Monroe  
Salem, First  
Jason Lee  
Morningside  
Trinity  
West Salem  
Shedd  
Sheridan  
Silverton  
Stayton

### RECORD OF CHURCH SUPPORT

YEAR	LOCAL CHURCHES	WORLD SERVICE	ALASKA MISSION	TOTAL
1955	\$6,888.59	\$ 7,500.00		\$14,388.59
1956	8,293.94	7,490.00		15,783.94
1957	7,627.30	9,000.00		16,627.30
1958	7,466.02	10,813.00	\$245.45	18,524.47
1959	9,420.75	11,525.00	226.07	21,171.82



## THE OREGON COLLEGES FOUNDATION

An Incorporation of the Accredited Independent Colleges of Oregon\* through which these schools receive annual support from Business and Industry.

- Established in 1951 and has grown each year since.
- In 1956, 46 companies gave \$71,004.45.
- This year 165 companies gave \$160,622.55.
- Gifts are divided . . . one half equally, the other half on the basis of enrollment.
- Willamette's share was \$22,838.88.

Abbott, Kerns & Bell  
 Acme Metal Works, Inc.  
 Addressograph-Multigraph  
 Agency Lithograph Co.  
 Aluminum Company of America  
 American-Marietta Co.  
 Arden Farms Co.  
 Autzen Foundation  
 Babcock & Wilcox Co.  
 Bailey Meter Co.  
 Balzer Machinery Co.  
 Bank of California  
 Norman Bassett Foundation  
 Blyth & Company  
 George R. Blodgett  
 Henry F. Cabell  
 California-Oregon Power Co.  
 E. H. Carruthers  
 Cargill, Inc.  
 Carlton Lumber Co.  
 Carnation Co.  
 Cascade Mfg. Co.  
 Cascades Plywood Corp.  
 Cascadia Lumber Co.  
 Citizens Bank of Oswego  
 Columbia Markets  
 Commerce Investment Co.  
 Cone Lumber Co.  
 Concora Foundation  
 Continental Can Co.  
 Continental Grain Co.  
 Crawford & Doherty Foundry  
 Daily Journal of Commerce  
 Dairy Cooperative Assn.  
 Dennis Uniform Mfg. Co.  
 Dwyer Lumber Co.  
 Electric Steel Foundry Co.  
 Equitable Savings & Loan Association  
 First National Bank of Oregon  
 Franklin Electric Co., Inc.  
 General American Transportation  
 General Foods Fund, Inc.  
 General Petroleum Corp.  
 General Mills Foundation  
 Georgia Pacific Corp.  
 J. K. Gill Co.  
 Archie Goldsmith & Brothers  
 Graham Electric  
 Grandma Cookie Company  
 Granning & Treeca Finance  
 Graybar Electric Co.  
 Great Northern Railway  
 John Hancock Mutual Life Insurance  
 Ben Hazen

L. H. Hoffman Construction Co.  
 Hyster Company  
 Huggins Insurance Co.  
 Industrial Air Products Co.  
 International Business Machines Corp.  
 International Harvester Co.  
 Irvington Machine Works  
 Jolly Joan Restaurant  
 Kandel Knitting Mills  
 Kerr Grain Corporation  
 Ketell Construction Co.  
 Klamath Ice & Storage Co.  
 Kraft Foods (National Dairy Products)  
 Langendorf United Bakeries, Inc.  
 Lloyd Corp., Ltd.  
 Loggers & Contractors Machinery Co.  
 Lumber Products  
 The Lynch Co., Inc.  
 Marsh & McLennan & Cosgrove Co.  
 Massachusetts Mutual Life Insurance Co.  
 May & Company  
 Meier & Frank Co.  
 Mercer Steel Co., Inc.  
 Miller Paint Co.  
 Modoc Lumber Co.  
 Modern Firescreens Co.  
 Mofy & Van Dyke, Inc.  
 National Biscuit Co.  
 Paul Neils  
 New York Life Insurance Co.  
 New England Mutual Life Insurance Co.  
 North Pacific Cannery & Packers, Inc.  
 Northern School Supply Co.  
 Northwest Industrial Laundry Co.  
 Northwest Natural Gas Co.  
 Ochoco Lumber Co.  
 Omark Industries, Inc.  
 Oregon Automobile Insurance Co.  
 Oregon Casket Company  
 The Oregon Journal  
 Oregon Mutual Savings Bank  
 Oregon Steel Mills  
 Oregonian Publishing Co.  
 Owens Illinois Glass Co.  
 Pacific Carbide & Alloys Co.  
 P & C Hand Forged Tool Co.  
 Pacific Metal Co.  
 Pacific Power & Light Co.  
 Pacific Telephone & Telegraph Co.  
 Pacific Title Insurance Co.  
 Page & Page Co.  
 Parke, Davis & Co.  
 Paulsen & Roles Laboratories  
 Peerless Trailer & Truck Service

Pendleton Woolen Mills, Inc.  
 A. V. Petersen Co.  
 Pettit Bedding Co.  
 Philip Morris, Inc.  
 Pierce Trailer & Equipment Co.  
 Portland Federal Savings  
 Portland General Electric Co.  
 Portland Machinery Co.  
 Portland Supply Co.  
 Portland Wire & Iron Works  
 Posey Lumber, Inc.  
 Proctor & Gamble Fund  
 Product Engineering Co.  
 Public Finance Corp.  
 Publisher's Paper Co.  
 Reynolds Metals Co.  
 C. E. Riggs, Inc.  
 Rodda Paint Co.  
 M. Sellar Co.  
 Safeway Stores, Inc.  
 Santiam Lumber Co.  
 Schnitzer & Wolf Machinery Co.  
 Sears Roebuck & Co.  
 Securities Intermountain, Inc.  
 Sunshine Dairy  
 Sun Studs, Inc.  
 Tektronix, Inc.  
 H. A. Templeton Lumber Corp.  
 Terminal Ice & Cold Storage Co.  
 Timber Structures, Inc.  
 Title & Trust Co.  
 M. Trumbo Co., Inc.  
 Tube Forging of America, Inc.  
 United States Bakery  
 United States Steel Foundation  
 United States National Bank of Portland  
 Van Waters & Rogers, Inc.  
 Vollstedt-Karr Lumber Co.  
 R. M. Wade & Co.  
 Warm Springs Lumber Co.  
 A. R. Watzek  
 Western Grayhound Lines  
 Western Tablet & Stationery Co.  
 Western Veneer  
 Western Woods Mfg. Co.  
 Weyerhaeuser Timber Co.  
 Rudie Wilhelm Warehouse Co.  
 Willamette Valley Lumber Co.  
 Willamette Iron & Steel Co.  
 Wood Tractor Co.  
 Zell Brothers  
 Zilka, Smither & Co., Inc.

# Statement of Income Received From Gifts During Fiscal Year 1958-1959

## Restricted Gifts

### GIFTS TO ENDOWMENT FUNDS:

Miscellaneous Gifts - - - - - \$ 48,275.74

### GIFTS FOR RESTRICTED PURPOSES:

Loan and Scholarship Funds - - - - - \$ 708.00  
 Reduce Baxter Hall Loan - - - - - 3,695.69  
 Language Laboratory Fund - - - - - 2,500.00  
 Physics Equipment Fund - - - - - 1,000.00  
 South Campus Expansion - - - - - 7,873.69  
 Gifts for Building - - - - - 50,000.00  
 Atkinson Fund of Willamette University - - - - - 22,000.00  
 Other - - - - - 122,632.58 \$210,409.96

### SCHOLARSHIPS, NOT ENDOWED:

There were over 50 businesses,  
 organizations, and individuals who gave - - - 41,951.64

### CHALLENGE FUND:

Payments on Building Program Pledges - - - 6,900.00

### CARDINAL ROUND TABLE GIFTS:

- - - - - 1,650.00 \$ 50,501.64

Total Restricted Gifts: \$309,187.34

## Unrestricted Gifts to General Budget for Current Operations

### GIFTS FROM BUSINESSES AND FOUNDATIONS:

Oregon Colleges Foundation - - - - - \$ 22,838.88  
 \*Matching Income, Scholarships - - - - - 5,800.00  
 Corporate Educational Foundations - - - - - 2,861.88  
 Other - - - - - 900.15 \$ 32,400.91

### METHODIST CHURCH:

Local Churches - - - - - 9,420.75  
 Oregon Conference - - - - - 11,525.00  
 Alaska Conference - - - - - 226.07 21,171.82

### PARENTS GIFTS:

- - - - - 2,800.68

### LOYALTY FUND

- - - - - 36,565.57 39,366.25

Total Unrestricted Gifts 92,938.98

GRAND TOTAL OF GIFTS FOR 1958-1959 \$402,126.32

\* Several corporations who grant students scholarships also give additional funds to the University to help underwrite the total educational cost of the recipient students.

# How Does Willamette Alumni Support Compare With Other Large Coeducational Colleges?

NAME OF INSTITUTION	NO. OF ALUMNI DONORS	EFFECTIVENESS OF SOLICITATION	ALUMNI GIFTS	AVERAGE ALUMNI GIFT
Albion College (Mich.) _____	1,868	19.7%	\$ 21,075	\$11.28
Allegheny College (Pa.) _____	2,715	29.8%	60,348	22.28
Carleton College (Minn.) _____	2,800	24.1%	65,909	23.54
Colorado College (Colo.) _____	1,668	17.6%	48,621	29.15
Knox College (Ill.) _____	3,009	31.5%	35,657	11.85
Macalester College (Minn.) _____	2,510	33.7%	40,238	16.03
Middlebury College (Vt.) _____	4,098	58.0%	42,723	10.43
Occidental (Calif.) _____	2,390	24.2%	44,779	18.74
Pomona College (Calif.) _____	3,524	29.9%	77,702	22.05
Reed College (Ore.) _____	2,021	51.8%	46,884	23.19
Redlands Univ. (Calif.) _____	909	14.0%	27,236	29.96
Swarthmore College (Pa.) _____	4,572	50.2%	179,428	39.24
Whitman College (Wash.) _____	383	8.3%	22,744	59.38
<b>Willamette University _____</b>	<b>2,235</b>	<b>37.9%</b>	<b>36,565</b>	<b>16.36</b>
Wittenberg (Ohio) _____	3,707	28.8%	101,039	27.26
<b>American Higher Education _____</b>	<b>1,108,324</b>	<b>22.3%</b>	<b>35,882,517</b>	<b>32.38</b>

Source of data, except for Willamette University, is "Survey of Annual Giving and Alumni Support", American Alumni Council, Washington D. C., February 1959.

# • A Report to the Willamette Alumni

by Dean Pollock, '22, president of the Willamette Alumni Association

In the recent election to fill alumni posts on the Board of Trustees and the Alumni Council we received through the mail over 900 ballots, a 50% increase over last year, which in turn was the largest alumni vote ever received up to that time, by far. In addition to this, last year 40% of our alumni gave to the Loyalty Fund. The figure this year, to date, is about on a par with last. This includes over 600 new givers. We need go no farther back than 1956 to find only 4½% of our alumni giving to the Fund.

What do these figures mean?

First, I think, they demonstrate the loyalty of Willamette people. We simply needed to be awakened.

Second, they show we still have a long way to go.

Third, they are an encouraging evidence of increasing interest in Alma Mater.

We may next ask, why this growing interest?

There are several answers to that, and one of the big ones comes right back to the young man who presides over alumni affairs, Jerry Whipple. He, more than anyone else, has brought about a closer relationship between the University and the great body of her alumni.

Another answer lies in the continuing splendid progress of our school, for which we are indebted to a devoted and effective Board of Trustees and a vigorous and highly capable administration under President Smith. Further, we take great pride in the growing prestige of our school in the field of higher education, and while we are admonished that "pride goeth before destruction," let us risk it for a moment while we recount a few facts.

Last year 52% of the graduating class went on into graduate work (a typical figure). About one-third of these won scholarships and fellowships valued at \$50,000—an average of about \$2,000 each.

In the last 20 years Willamette graduates have won 96 graduate degrees, a number exceeded by only one other college in the Northwest.

The highly competitive and highly prized Danforth Scholarships for graduate study were begun in 1951. Willamette has won three. Only three other colleges on the Pacific Coast have won more.

In 1950 New York University first offered the Root-Tilden and Snow scholar-

ships in law. Only three are granted each year in each Federal Judicial Circuit. Willamette therefore competes with all of the colleges and universities in the nine westernmost states for these three-year scholarships paying \$2400 a year. Willamette has won four of these awards, and one of our scholars was recently elected president of the law school student body.

We could name a number of other awards that fall in the very top category—two Woodrow Wilson Fellowships, four Atomic Energy Commission Fellowships, one Westinghouse Fellowship in physics and a number of Fulbright scholarships for advanced study abroad.

The College of Law under Dean Reese is becoming widely recognized for its original and progressive methods and the exceptional success of its graduates in the state bar examinations. In recent years the proportion of Willamette graduates passing the bar has ranged from 87 to 98 percent. The figure for all candidates is 70%. The present enrollment includes students from 67 colleges in 21 states and 3 foreign countries.

We might also mention some individual achievements. The Chief of the European Desk in the State Department is a Willamette graduate, as is also the Chief of Staff of the Senate Foreign Relations Committee. Among educators in high posts are three college presidents and a number of deans and department heads in major universities. A Willamette man recently became Scientific Director of the Food and Drug Administration, said to be one of the top scientific posts in the Federal government. Two Willamette men at the Bell Telephone Laboratories are co-inventors of the solar battery which powers the radio transmitter in the first Vanguard satellite. After more than a year in orbit, the radio signals are still coming in at full strength. Scientists estimate that they will continue for another 200 years. (No Sputnik battery has lasted more than two weeks.) A Willamette scientist with the Atomic Energy Commission was one of a four-man team that discovered the anti-proton—another of those mysterious atomic particles that harbor the whole vast energy of the universe. This is described as a major break-through in nuclear physics.

I have tossed in these facts and figures in case some of you may be wondering about the place of the liberal arts college

in the critical years ahead, with the doubling of student enrollment expected within the next ten years; with the constant struggle against inflated costs; with the competition for faculty brains that is growing ever more intense.

Can we successfully compete with the tax supported schools? And even if we can, is it worth it?

A few years ago the Journal of Higher Education set out to answer one phase of this question by studying the educational backgrounds of American scientists. It was found that the liberal arts colleges contributed far beyond their proportionate share, and the close association of student and teacher was found to be significant. (Incidentally, Willamette was number 14 on a list of 438 colleges studied. Number one was our neighbor, Reed College. Reed and Willamette were the only West Coast schools in the top 30.)

The quality of instruction in the liberal arts colleges is important. The academic and moral standards are important. It may even be that under the student load ahead individualized education is going to survive only in the private schools.

Then too, academic standards have an influence that you might not suspect. If good teachers attract good students, it is no less true that good students attract good faculty. In this respect the intellectual climate of a campus is important. (This is not to say that we expect our faculty to content itself with psychic emolument.)

There is another aspect, too. In my Junior year I remember our sociology class was very much intrigued by a chapter in one of our texts entitled Super-Social Control. This explained how it might be possible for a man or a regime to build a subservient state along predetermined lines by gaining complete control of education. It was only the next spring that Mussolini and his Black Shirts marched on Rome and we saw these principles actually put

(Continued on Page 11)



Warne Nunn, Dean Robert Gregg, Dean Pollock

# CLASS NOTES

1906

Dr. JOHN C. EVANS has been awarded a lifetime membership in the University of Oregon Medical School Alumni Association. In 1913, Willamette University and University of Oregon combined their medical schools and alumni groups to form the present medical school.

1912

EDGAR L. MARTIN, Sandy, Ore., attorney, is recovering from a fractured spine he received falling on the ice last February. He has high hopes of being fully recovered and able to attend his class reunion in 1962.

ROSS T. McINTIRE, retired rear admiral who was once personal physician to the late President Franklin D. Roosevelt, has received a lifetime membership in the U. of O. Medical School Alumni Association.

1919

THOMAS R. and VESTA (MULLIGAN) ROE are still in Gaston, Oregon, where Thomas recently completed 25 years service as postmaster. The occasion was celebrated with a surprise party given by his co-workers.

1920

FERN (WELLS) DAUGHERTY of 1632 Court Street, N.E., Salem, Oregon, is still working as a tax consultant. A ninth grandchild is a recent addition to her family.

1923

MARTHA (FERGUSON) McKEOWN, teacher at Wy'east high school in Hood River, Oregon, has just had published her second book, *Come To Our Salmon Feast*, about the Cello fishing Indians of that region. Mrs. McKeown was very close to their famous chief "Tommy" Thompson during his last years, and had the satisfaction of reading the book to him shortly before his death this spring. She reports that he was delighted with it.

ESTHER (McCRACKEN) DIXON is now living at 1459 Miller Ave., Burley, Idaho, where her husband has accepted a pastorate after many years in eastern Asia.

EARL B. HALLMARK, of Charleston, Oregon, died in May, 1959.

BRUCE and GRACE (BRAINERD) WHITE, of the University of Hawaii, will visit the mainland during their sabbatical leave beginning in August. Bruce is Dean of Faculty at U. of H., and Grace is instructor in mathematics.



Puget Sound Area alumni elected new officers at their mid-year meeting. Shown seated at the dinner are, Clifford Gregg, '53, Alumni Association Director, and guest speaker, Football Coach, Ted Ogdahl. Standing, Mrs. Frank Hood, (Marian Erikson) '47, and President, Stanley Ryals, '49. A summer picnic for all Willamette alumni in the Puget Sound Area and their families was held Sunday, July 26, at Magnolia Park in Seattle.



Class of 1919 luncheon, Willamette Campus, June 6, 1959

1924

GEORGE L. OLIVER, 3111 Tieton Drive, Yakima, Washington, is not only a teacher and boy's counselor in Yakima schools, but also owns and operates a cherry ranch and is active in the Cherry Institute and other organizations.

1926

ISABELLE (NOFTSKER) BOVE is busy in the Foreign Student's Service Council in Arlington, Virginia, and recently attended the Conference On Exchange Of Persons.

1927

REV and MRS. FLOYD S. (DOROTHY JACKSON) BAILEY have moved from Lone, Oregon to 240 East Main St., Weiser, Idaho, where Rev. Bailey will be the minister of the Congregational Church.

EUGENIA M. SAVAGE is returning to the Far East this summer, after 15 years in the States, to teach music at Trinity College, Singapore. Her address is No. 7 Mount Sophia Street, Singapore 9, Malaya.

1928

CHIEF JUSTICE WILLIAM M. and MRS. JEAN (MIDDLETON, '32) McALLISTER have become thoroughly at home in Salem in the three years since the Justice was appointed to Oregon's highest court by Gov. Elmo Smith. Jean says the transition was not easy, for they had lived in Medford all their married life and had many close friends there, but it has worked out beautifully, and they now hope William, Jr., and his wife will come to Salem so William can study law at Willamette when he gets out of the Navy.

1929

Dr. REEVE H. BETTS, head surgeon at Christian Medical College Hospital, Vellore, South India, writes from his vacation spot in the hill country of S. India, that he expects to leave India next year and will probably be back in the states by late June.

1930

FLORENCE (POWER) SCALES is now Circulation Librarian at Willamette.

1933

BEULAH (CRAMER) McLENNON is now living at 1733 Tourmaline St., San Diego 9, California, where her husband, John, was transferred to become Transmission and Outside Plant Engineer in that area for Pac. Tel. & Tel.

1934

REGINALD H. REES is now an accountant for the Oregon Dept. of Motor Vehicles. He is active in American Legion and Cub Scout work.

1935

DR. WILLIAM E. HALL was cited for outstanding ability and influence at the University of Nebraska annual Honors Day Convocation recently. He has been a member of the faculty there since 1945.

MRS. ESTHER (SPEARS) LACLAIR has joined the teaching staff at North Bend (Ore.) High School.

DAVID E. and MARGARET (NOTSON, '33)

MOSER are now at 3931 Duncan Place, Palo Alto, California. David was promoted to the position of Director of Sales Analysis for Consolidated Freightways, and works in the company's Menlo Park offices.

PAUL G. and JANICE (HIGGINS, '37) CARPENTER. Paul is now Vice-President and acting General Manager of the Copolymer Rubber and Chemical Corporation, and was recently elected to the Board of Directors of the Louisiana Chemical Association.

1938

MARGARET MAGEE, who has been on the staff of the Salem (Oregon) Capital Journal since 1941, was elected to the presidency of the Oregon Press Women at their annual spring convention.

LUELLE CHAPIN is now MRS. JAMES D. KIDRICK, and is living at 2802 West 92nd, Seattle, Washington.

1939

ARTHUR J. and JUNE (AASHEIM) GALLON have moved to 2864 Glendessary Lane, Santa Barbara, California. Arthur is head basketball coach at the University of California (Santa Barbara.)

1940

DR. WARREN R. BIGGERSTAFF, professor of chemistry at Fresno State College, has received a \$8,466 grant from the American Cancer Society to conduct cancer research in the F.S.C. chemistry laboratories.

MRS. R. G. (JESSICA KINSEY) COREY is now at 350 N. 75th, Seattle 3, Washington.

1941

TOM T. OYE, 4824 Vallacher Ave., Minneapolis 16, Minnesota, is doing research in General Mills' Personnel Department at their main offices in Minneapolis.

GILBERT (GIB) and BETTY (SACKETT, '43) HEALD live at 12126 Foster Place, Portland, Oregon, with their four boys. Gib is with the Acaia Mutual Life Insurance Co., and Betty, formerly employed by the Mental Health Association of Oregon, is now an "ex-working wife."

1942

HELEN (NEWLAND) JONES is excited about her connection with the first professional all-Oregon movie, "Stump Run," produced in Eugene. She is one of the two Eugene women in the cast—the rest being from Hollywood.

ROSEMARY (DETWEILER) MURRELL, 12637 Hatteras, North Hollywood, California, says she is sorry she has no interesting news to contribute, but she surely enjoys reading about her classmates.

1943

JOHN E. MARTIN has been appointed by the Oregon Liquor Control Commission to the position of license supervisor.

MRS. DAN (DOROTHY COLDERWOOD) PETREQUIN has been living in Corvallis, Oregon for the past 12 years with her hus-

band, Dan, who is in the construction business, and their three daughters.

NANCY (BOLES) PETERS, whose husband is a pilot for Trans World Airlines, flying their international routes, is now living at 35 Dome Lane, Wantagh, New York.

1944

MARY ANN (OWEN) KORTEMAYER reports that her husband, Lt. Col. Henry Kortemeyer, was recently appointed Executive to the Commanding General, Headquarters, Western Air Defense Force.

DR. JAMES A. GARSON, whose dental office has been located in Portland since 1947, is now at 15936 S.E. Division, Portland 36, Oregon. This is near the David Douglas High School, which seems to have quite an attraction for Willamette alumni. (See the Spring issue of the *Alumnus*.)

1946

DON and MARY JEAN (NIMS, '47) BEEGLE, 2226 N.E. Mason St., Portland, Oregon, report the arrival of a son, David Allen, in November, 1958.

DOROTHY J. HALL is Counselor at Herbert Hoover High School, Glendale, California.

1947

MARION W. CREWS is a teacher and counselor at Stevenson, Washington. Marion is married to the former Betty Lou Olds, and they have a son, Donald Wayne, 4½, and a daughter, Kathleen Ann, age two months.

1948

HAROLD E. RANTON is minister of the First Christian Church, 7th and K Sts., Eureka, California.

REID L. SHELTON is currently starring in the road company of the hit show "My Fair Lady," singing one of its principal songs: "On the Street Where You Live."

LORA E. BATES is a senior class teacher and advisor at Silverton (Oregon) Union High School.

GWEN HARPER is regional field adviser for Camp Fire Girls. Her headquarters are in Spokane, and she advises Camp Fire Councils in Washington, Oregon, Idaho, Montana, and Alaska.

1949

BILL and PATRICIA (FAIRBANK) HOLTZ live at 215 Casa Linda Drive, Woodland, California, with their two children. Bill is an Extension Field Technologist on the U. of Cal. Agricultural Extension Staff.

MICHAEL and DONA (ROTHWELL) ADAMS have been at Mt. Vernon, Washington, for four years now. Michael is Project Engineer at the Shell Oil Co. Anacortes refinery.

DR. RICHARD B. CRAVENS, 1190 Uluopihii Loop, Kailua, Hawaii, besides being Oahu Psychological Services Administrator for the Dept. of Health of Hawaii, is also consulting psychologist, Queen's Hospital, Honolulu; instructor at U. of H.; and has a private practice.

EDWARD C. and BETTY (DUTTON) LIND are settled in the new home they built at 18140 S.W. Old River Road, Oswego, Oregon. Edward is an engineer at Willamette Iron & Steel Co., Bingham Pump Co. Div.

SCOTT and JANE (MOUNTCASTLE) TURNER live at 835 Ballentine, Raymond, Washington with their three children—Beth, 7, Paul, 5, and Mike, 4.

CHARLES E. CRECELIOUS has been on active duty with the U. S. Air Force since shortly after his graduation from Willamette. He flew combat cargo missions to Korea, later was AFROTC instructor at Southern Illinois University, where he earned his M.S. Degree in School Administration, and is now assigned to Headquarters, USAF in Europe, Deputy Chief of Staff for Intelligence, at Weisbaden, Germany. He sent news of Stuart Adams and Richard Andrews (see below.)

1950

STUART ADAMS is a pilot for Alaskan Airways. His address: 712 Main Street, Juneau, Alaska.

RICHARD T. ANDREWS is living at 573 Highway Blvd., Ft. Walton Beach, Florida.

His present assignment is with the Air Research and Development Command of the USAF. He recently received his Master's Degree in Psychology.

WILLIAM B. McELROY was recently elected president of the Salem (Oregon) Junior Chamber of Commerce.

1951

THOMAS A. BARTLETT was awarded his degree of Doctor of Philosophy in Political Science by Stanford University at their commencement exercises at Palo Alto this spring.

GORDON E. FISHER has been named chemistry and mathematics instructor at the Skagit Valley College, Washington. He has been at the U. of W. as a teaching fellow in chemistry for the past three years.

JACK F. THOMPSON has been appointed elections director by Oregon's new Secretary of State, Howell Appling.

MAJOR LEONARD J. McCOY is in Germany as Chief of Storage at Giessen QM Supply Center, APO 169, New York.

MRS. DUANE DENNIS (JOAN HOLBECK) announces the birth of a daughter, Kathryn Jean, in December, 1958.

NANCY (PHILLIPS) MARSHALL also has a daughter named Kathryn, who has just been provided with a baby brother named David Loy Marshall.

JOHN B. (JACK) GUNN, who is Administrative Analyst in the Santa Clara County (California) Executive's Office, recently directed a successful county bond campaign for \$8,500,000 worth of public improvements.

JAMES K. NOA'S new address is 408 Ilama Street, Kailua, Oahu, Hawaii.

G. SHELDON GREEN has received his Doctor of Medicine degree from the University of Oregon Medical School.

GEORGE L. and PATRICIA (LONG) WAGNER and their two sons, Mark and Craig, are returning to Portland after a year at Harvard, where George earned an LLM degree. Their temporary address is 4540 N.E. 38th Ave., Portland 11, Oregon.

1952

MARK and JANE (PINKERTON, '53) COT-

TON will spend the summer at Western Washington College, Bellingham, where Mark will attend the Institute for Teachers of Secondary School Mathematics under a National Science Foundation Scholarship. They will return this fall to Hermiston, Oregon, where Mark is math teacher, head track coach, and assistant coach in basketball and football. Their address in Hermiston is 1110 W. 11th.

AUDREY (BLISS) SELBY, her husband, John, and children, Clint, Kate, and Janet, are living at 5921 Bruns Court, Oakland 11, California.

1953

STEPHEN KENT NICKS and Janice Hipple were married recently in California.

PATRICIA ANN (PATSY FABER) STRATTON and her husband, Rich, have an insurance agency and two children, Jimmie and Susan, in Central Point, Oregon. Patsy also runs her own mimeographing business, "Patsy's Printing," and has been elected charter president of the Rogue Valley Chapter, Delta Gamma Alumnae.

JOY KOEPPEN became Mrs. William P. Gugin on January 26, 1959. Lt. Gugin is a jet pilot attached to the 445th Fighter Interceptor Squadron, Wurtsmith AFB, Oscoda, Michigan.

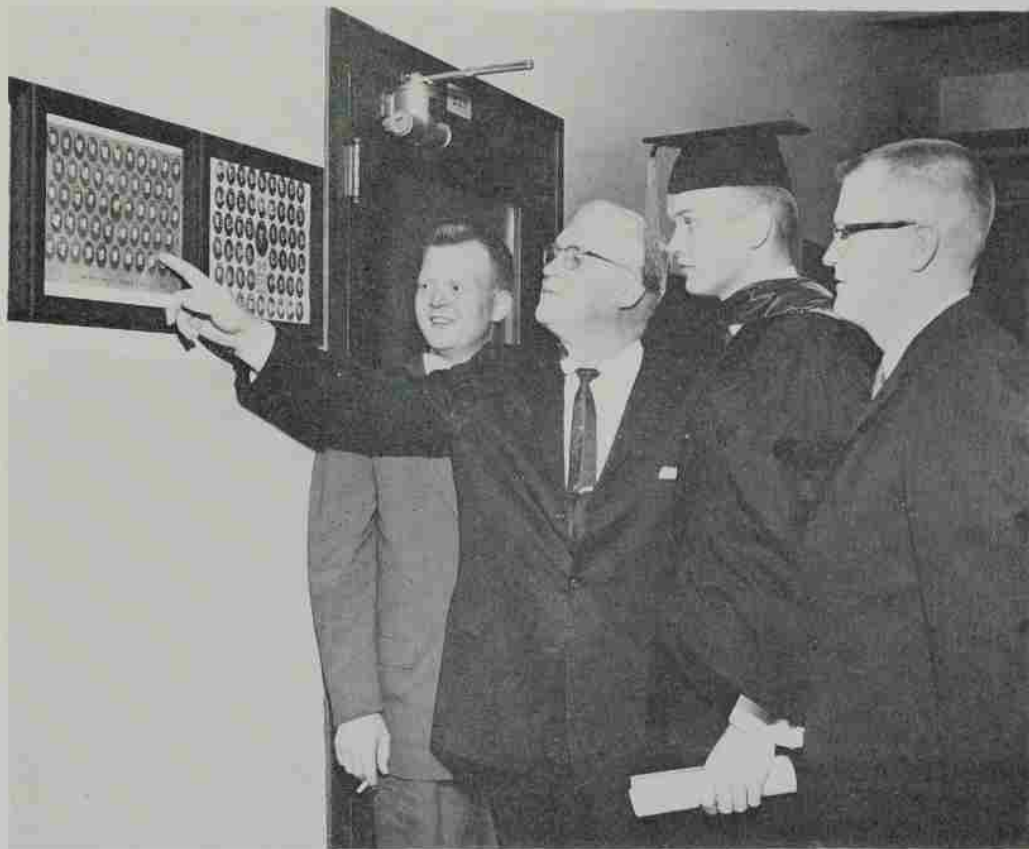
LORNA (WALLACE) YOUNG and her husband, Gordon, have another son, Michael Floyd, born in January, joining his brother Richard and sister Jean.

ANN SHIDELL MUELLER is keeping up with her music as accompanist for the Port Arthur, Texas, Choral Club, and as substitute music teacher in the junior high school there.

HELMUT G. SCHREIMA, 1011 N. 10th, Corvallis, Oregon, has a son, David George, who will be one year old July 30, 1959.

DAVID PARTON is an intern in clinical psychology at Duke University Medical Center, Durham, North Carolina. His address is 326 Clark Street, Durham.

MARILYN JOAN MERZ was married to Bertrand W. Adkins on December 21, 1958, in Washington, D.C. Mr. Adkins is with the Department of Defense, and Marilyn will continue her work in the Office of Personnel, Department of State. Their address is Apt. 4, 2206 Eye Street, NW, Washington 7, D. C.



Left to right: Dr. Agnar A. Straumfjord, '50, Dr. Jon V. Straumfjord, Dr. Robert W. Straumfjord, '55, Dr. Jon V. Straumfjord, Jr., '48. Robert, who received his Doctor of Medicine degree in June, is the third of Dr. Jon Straumfjord's sons to graduate from the University of Oregon Medical School.



Mrs. Margaret Maris and Mrs. Howard Miller at the registration desk, Fine Arts-Auditorium, Alumni Day.

1954

Dr. RAYMOND L. McILVENNA is leaving Lewis and Clark college in Portland, where he has been head of the Political Science department, to be on the faculty of University of Southern California.

SHIRLEY (NIESWANDER) SEPICK, son, Craig Allan, and husband, Don (who is a design engineer for Boeing), are living at 409 SW 129th, Seattle, Washington.

LAYTON and MARY JO (EWALL, '55) and their son, Michael, are living at 1585 25th Street NE, Salem, Oregon.

MARILYN ENGLISH NELSON, daughter Nanette, and husband William, are now at 309 N. Garrison Road, Vancouver, Washington. Mr. Nelson will be teaching at Clark College in Vancouver.

NORMAN and "BECKY" (JOHANNA BECKHAM, '54) ZELLER will now be at 539 SE 5th, Beaverton, Oregon. Norm graduated from the U. of O. Dental School this year, and will practice in his own clinic on the Beaverton-Hillsdale highway, near Raleigh Hills.

ANN (TODD) GIBBENS STOUT reports the birth of a daughter, Elizabeth Jane, February 3. She writes from 4939 Lennox Blvd., Inglewood, Calif., where the family is living while Ann teaches and plays lecture recitals on the piano literature of Bartok, and her husband is working on his Ph.D. in Music Education at U.S.C.

1955

KENNETH BURTON HAEVERNICK, Forest Grove, Ore., received the degree of Doctor of Medicine at the University of Oregon Medical School in June. He will intern at Good Samaritan hospital in Portland.

JOHN NICOL ROEHR, Neskowin, Ore., also received his M.D. degree in the same class as Kenneth Haevernick, but will intern at Virginia Mason hospital in Seattle, Wash.

DAVID BELCH, 486 Duncan St., San Francisco 14, Calif., is now a public relations account executive and is a member of the state board, Young Republicans of California.

JO ANN HOWARD and CHARLES H. SEAGRAVES had an all-Willamette wedding at Saratoga, California, on April 18. They were married at the home of ARNIE and PAT (HOWARD) ACKER, WU '50, and the ushers

were TOM SCHROCK, '55, NORM DUERS-DAL, '56, and DAVE FINLAY, '56. Their home is at 1452 Bellevue Ave., Burlingame, California.

THOMAS M. WHITEHEAD is in his second year as minister of the Garibaldi-Bay City Methodist church. His address is Box 347, Bay City, Oregon.

MIKE and MARYN ('57) HOVIS have been at the University of Illinois, where Mike earned his M.S. in Recreation, and taught in the P.E. Department on a graduate assistantship.

EARL and JOYCE (SCHMITZ) PICKETT plan to make their home in Portland when Earl is discharged from the Navy in October. Earl has been working with electronic computers while in the Navy, and toward

his CPA as preparation for civilian life. Their home after October, 1959, will be at 3406 SE Gladstone, Portland, Oregon.

TED SMITH, 1st Lt., USAF, was with the Air Rescue Squadron at the Icelandic International Airport, Keflavik. In a very newsy letter he mentions: Lt. DICK HAY ('55), who dropped in from Ardmore, Oklahoma, where he is attached to a Troop Carrier Wing; saw Lt. DAVE TOWNSEND ('56) while on a skiing vacation in the Alps (Dave is stationed near Frankfurt, and reports that WARDE and SALLY (STELLINGS) SLIGH ('55) are at a nearby base); and when his tour of duty in Iceland is up, Ted and his wife Barbi plan to spend a couple of months getting to his new assignment in Sacramento. During this time they will visit Lt. TERRY and MILDRED WHEELER ('55) at Lackland AFB, San Antonio; JOHN and MAXINE (BROWN) KENT ('55) in San Carlos, California. John, Ted thinks, has just been discharged from the Air Force after a tour as navigator in B-47's at March AFB; and finally they will see CHUCK KILBORN ('56), who is assistant minister of the First Christian Church in Lebanon, Oregon.

MARILYN ROBERTSON is an office R.N. (pediatrician) in San Francisco, and has been commissioned 2nd Lt. in the California National Guard, assigned to the 146th Evacuation Hospital.

JEAN THOMAS is assistant manager of Meier and Frank Co.'s Downstairs Store Ready-to-Wear Department in Portland.

1956

At commencement ceremonies at University of Denver on June 10, NANCY LEE PEET was awarded her M.S.W. degree.

JUNE HARMS PETER, 80 7th Ave., San Francisco, Calif., has received her certificate of physical therapy from Stanford University.

DAVID and MARJORIE (LITTLE) WEEKS, 3216 S.W. 13th, Portland 1, Ore., are enjoying their life on "Oregon Medical School Hill" where Dave reports that his freshman year is very challenging and interesting. Also challenging and interesting is their seven-month son, Daniel David Weeks.

YVONNE BOWLES SEARS received a government grant which made it possible for her to leave her nursing duties and enroll in a full-time Master of Science in Nursing Education program at the University of Oregon Medical School Dept. of Nursing. She will accompany her husband to Rochester, New York in July, where he will go for an internship in internal medicine.

MARGARET HUSON BROWN lives at 1505 Wilson Place, Medford, Ore., where she is busy giving 13 private piano lessons each week and caring for two daughters, Karen, three months, and Diane, 1½ years old.



Coffee time at the 'Cat Cavern' for class of 1949, Alumni Day, June 6, 1959.

1st Lt. PETER C. HARVEY is at Lackland AFB, Texas, where he is course supervisor in the Reserve Personnel Officer course.

GAY KENT BOSSART, whose husband is assistant director at the Wesley Foundation, Amherst, Mass., was recently installed in Mortar Board, national senior women's honor society.

JOANNE (TERHARK) and DAVID FINLAY live at 315-6 Stanford Village, Stanford, Calif., where Dave is finishing his last year of classwork on his doctorate in political science, and Jo is teaching core and remedial math in the seventh grade.

DAVID and CORALIE (DOUGHTON) RHOTEN's first child, Amy Ruth, was born March 10 this year. Dave is still studying law, and Coralie, who taught until December 23, hopes to continue teaching when school takes up against this fall.

WILLARD K. CAREY will be married July 4 in Davenport, Wash., to Audrey Ann Lane, high school economist and physical education instructor in Reardon, Wash.

JIM and GEORGENE BETTIS SCOTT have a new address, 3717 S.W. Corbett Ave., Portland 1, Ore. Jim is a sophomore in Medical School and Georgene is working for the Oregon Dairy Council.

1st Lt. NORMAN D. COCKING is now living in Ankara, Turkey, where he is staff transportation officer assigned to headquarters, TUSLOG (the U. S. Logistics Group). His address is Box 432, TUSLOG, APO 254, N. Y., N. Y.

CLARINE BETH WOOLERY (Mrs. Burton L. Harp) is now living in Prineville, Ore., where her husband is working for the Keystone Construction Co. on the big earth-dam just outside of Prineville. She is enjoying all the outdoor activity offered in that part of the state.

#### 1957

PATRICIA ELIZABETH BRANDT received her M.A. degree from the University of Denver in June.

MARION (SMITH) PETTEY, whose husband, Al, just graduated in Forestry from O.S.C., now lives at Rt. 1, Box 904, Coos Bay, Ore. Their family includes Janet and Debbie, born in August 1955, Stephen born in February 1957, and Laurie born in November 1958.

JOHN and CAROL (LITCHFIELD) REHFUSS are back in Los Angeles after the six months John served with the Army at Fort Ord. He has a Master of Science degree in Public Administration and is now working as a budget analyst.

MARY ANN CALLINAN announces her marriage in California April 4 to Mr. Warren J. Byers, editor, State Farm Insurance Co. in Salem. Their new address is Rt. 1, Box 321A, Turner, Ore.

DOUG HOUSER has been elected president of the Stanford Law Association and will be Stanford's delegate to the Association of American Law Schools convention in Miami, Fla., in July, and to the Phi Delta Phi (legal fraternity) international convention in Minneapolis in August.

GARY and GAYLE (ROGERS) LOCKWOOD are living at 235 23rd St. S.E., Salem. Gary is in his second year of law at WU and is serving as second year president, and Gayle is still teaching at Central High School in Independence, Ore.

PAUL and MARJORIE (WILSON) SHAFER are now making their home at 1736 Evergreen Ave., Salem.

Lt. JAMES and NANCY (LAGEN) GEDDES with their two small sons are now stationed at Moody AFB, Valdosta, Georgia. They hope to have a permanent assignment with A.D.C. in the Pacific Northwest in August.

SALLY JONES is still working on her master's thesis in zoology at Washington U. She has announced her engagement to Jan van Niel, a graduate zoology student at the same university.

PATRICIA BRANDT, who plans a career as a music librarian, has earned straight A's in the Library School of the University of Denver in Colorado.

TOMMY MURDOCK, now living at Klamath Falls, Ore., is beginning his studies for the Episcopal ministry under the sponsorship of St. Luke's of Grants Pass, Ore. He has just returned from serving as page for Senator Neuberger.

After taking graduate work at Seattle U., VOLNEY SIGMUND entered the service last December as a second lieutenant, and in April this year made his first solo flight at Spence Air Base, Moultrie, Ga.

#### 1958

MAUREEN DAY BERNARD is now working as a legal secretary in Eugene, Oregon, while her husband, who is majoring in chemistry, completes school. Their address is 2322-3 Patterson Drive, Eugene.

VICTOR LEE BACKLUND, Box 62, Bandon, Ore., is now in pro baseball and attends Willamette U. in the off-season where he is getting a start toward his M.A. in Education.

ELIZABETH JEAN MARTIN is teaching English and studying German in Heidelberg, Germany, and plans to extend her Fulbright teaching assistant grant another year. In her free time she is the typical tourist, traveling by car to England, by bus to Italy, by bicycle to Holland, and has hitch-hiked to Munich.

MARION HIGLEY EYERLY was married in March, 1958, and is now working at State Farm Insurance Company in the Life Insurance Division. Her husband, Jack, works for the Salem Art Museum-Bush House, and their address is 546 Market St. N.E., in Salem.

LARRY A. MOONEY, 407 E. 45th Ave., Seattle, Wash., announces the birth of a son, David J. Mooney, on March 23, 1959.

MAC and MARILYN (HANTHORN) BAKER, 32½ Court, No. 3, Athens, Ohio, writes they are still at Ohio University where Mac is in his second semester of graduate work, and Marilyn caught the measles.

GEORGE W. HOYT has joined the staff of the Tigard (Ore.) Times to sell advertising and printing and to assist in news coverage.

RONALD A. JOHNSON is now stationed at Ft. Leonard Wood, Mo., where he has completed the six-week rod and tapeman course which includes training in basic drafting, plotting and computing, mathematics and map reading.

After attending American University in Washington, D. C., DIXIE RUUD is now employed at Pacific Gas and Electric in San Francisco. Her address is 615 Taylor No. 22, San Francisco 2, Calif.

## A Report to the Willamette Alumni

(Continued from Page 7)

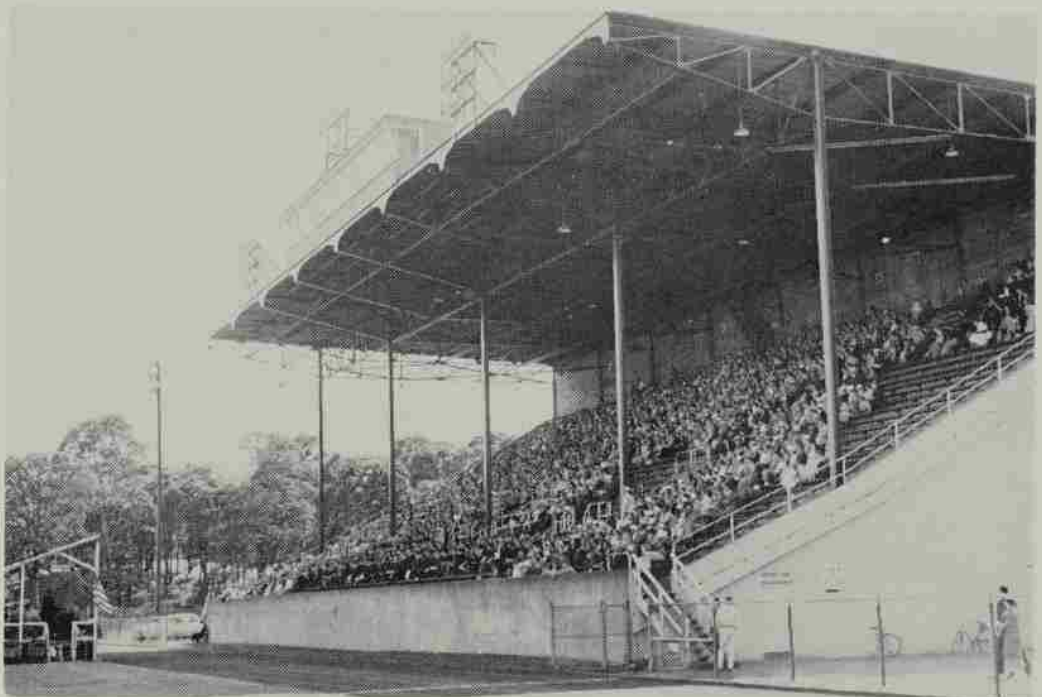
into practice, ushering in the years of crisis that we know too well. Under any system of government, a monolithic educational system constitutes a danger. Political control is always awaiting its chance. Our nation was less than 30 years old when the State of New Hampshire moved to dispossess the Board of Trustees of Dartmouth College and substitute a state appointed board. This was the famous Dartmouth College case pled by Daniel Webster before the Supreme Court—the one in which he said, "Dartmouth is a small school, but there are those who love her." He won his case, and the charters of the private schools have remained inviolate. In preserving their own independence, they have helped maintain academic freedom in the state colleges as well, which again and again have had to fight political manipulation.

I hope, then, that you will not conceive the role of the alumni to be an insignificant one, nor look upon yourself as a passive participant. We are a vital force, and the response of our graduates is one of the most heartening things that I have witnessed. Let's stay on the ball.

DONALD H. WILCOX, 2nd Lt., USAF, is now in Turkey serving as a personnel officer.

#### 1956

At the urging of the Metropolitan Museum of Art in New York City, the American Heritage Foundation has granted DONALD BUNSE of Salem a scholarship for the second straight summer at the art institute at Deerfield, Mass. This summer, Bunse's studies will not be confined to Deerfield, because he will be given the means to range the East Coast in search of evidence supporting his theory that ornate doorways and moldings in certain antique colonial homes were designed and built by one master craftsman. The thesis was developed by Bunse in a paper at Deerfield last summer and now Metropolitan Museum officials want him to look into it further.



Crowd at Commencement Exercises

# Willamette University

Salem, Oregon



Nonprofit Organization  
U. S. POSTAGE  
**PAID**  
Permit No. 152  
SALEM, OREGON

Form 3547 Requested

VOLUME VII

SUMMER, 1959

NO. 1

Right to left from top to bottom: 1949'ers reunion luncheon; 1924 Class Reunion, June 6, 1959; Class of 1934 get-together on Alumni Day; Alumni

guests at luncheon; Pomp and Circumstance; Dr. Howard Runkel, head of the Speech department, addresses the 117th graduating class.

