

Miss Oregon Returns to WU



ROSEMARY DOOLEN
(Photo courtesy of Capital Journal)

Willamette Collegian

"In Age There Is Wisdom"

1842—Serving a University in Its Second Century—1960

Vol. LXIII Salem, Oregon, September 16, 1960 No. 1

New Professors Join Staff

One hundred and five academic and administrative personnel are listed on Willamette rolls to handle this fall's large enrollment. Among new faculty members are the following:

Captain Milton J. Golart, a graduate of the University of Washington, has served in the USAF 18 years. While in the service he visited such places as the Pacific Islands, Australia, Korea, Japan and New Guinea.

Replacing Dr. Willis Gates is Charles R. Heiden who has been appointed associate professor of music in the college of music. Heiden received his bachelor degree from Northwestern University and his master of fine arts from Ohio University. He is a member of Pi Kappa Lambda, a national music honorary.

DANIEL JAFFE will join the staff as assistant professor of English. He will be teaching his classes with particular emphasis on creative writing. He has attended Rutgers University and the University of Michigan. Jaffe has published articles in the University of Nebraska Literary Journal and the Ladies Home Journal.

A native of Oswego, Oregon, Frederick W. Kuhl is the new director of information and an instructor of journalism. A graduate of the University of Oregon and Portland State, he lists as special interests unrelated to his special field, bowling and playing baseball.

This fall the Willamette economics department welcomes Jack Leonard. He received his bachelor's degree at George Washington University and his master's degree from Stanford University. Before coming to Willamette Professor Leonard taught social studies at Washington High School in Portland, Oregon.

STUDENTS MAJORING in law will have the opportunity to enroll in classes under the leadership of professor Alister D. McAlister, who

was graduated from Greenville, Illinois, and who received his LL.B. degree at the University of Illinois College of Law. A native of Highland, Illinois, Professor McAlister taught law at the UCLA School of Law at Los Angeles, California.

Joining the history department is Dr. Ernst Leopold Presseisen. He is originally from Rotterdam, Netherlands, where he studied before attending the University of California at Berkeley and Harvard University. He has been teaching history at Stanford University in California.

Coming to Willamette's mathematics staff from OSC is John H.

Wilson. At OSC Professor Wilson taught algebra, calculus and analytic geometry. Professor Wilson has studied at MIT, Washington State College, UCLA and Oregon State College. His major fields are mathematics and physics.

Douglas Martin Campbell, graduate of the University of Minnesota in 1927 with a bachelor of science degree in civil engineering, brings his experiences and training to Willamette for a physics course in engineering drawing. Campbell spent 30 years in the U.S. Navy as a reserve or an active and retired in 1954 as a captain with a Bronze star. All of this time was spent as

an aviator. Campbell has traveled through every state, and in 1957-1958 he made a complete tour of the world.

Paula Drayton, a proficient linguist in German, French and English, joins the faculty in the French department. Mrs. Drayton, a student of the Paris School of Political Science and a graduate from Willamette with a bachelor of arts degree and from the University of Oregon with a masters degree, will conduct four intermediate French courses and two French composition and conversation courses.

Brainy, Social Frosh in New Program

The opportunity to participate in the honors program has now been extended to twenty freshmen, entering Willamette with grade point averages of 3.5 or better and a full slate of academic and social achievements.

A NATIONAL Merit scholarship finalist, William Bafus, Jr., enters the program as a pre-law student with an interest and talent in creative writing that placed him first in the Veterans of Foreign Wars essay contest.

James Brown, also a pre-law major and a finalist in the National Merit scholarships, was valedictorian and vice-president of National Honor society.

MATHEMATICS or chemistry are the professed interests of Robert (Jack) Burnard, past president and vice-president of his student body. Burnard also holds an honor scholarship.

Susan Carrell, also a sports enthusiast, and an Honor scholarship recipient, sets her college major as education in foreign languages.

EDITOR of her school yearbook

and winner of high school math contest, Gail Evernden enters the program carrying a Mary L. Collins scholarship.

Salutatorian of his class, Herbert Dale Fisher, enters the program with a college major in biology (entomology). Fisher was editor of his high school paper and a delegate to Washington Boys' State.

ALLAN R. Frost, a pre-med major, held executive class offices in high school and has a varied interest in sports.

Jonathan Goode, physics major, received honorable mention in the Merit scholarships and was president of his National Honor Society chapter.

MARY L. Collins scholarship recipient, Jerry Goodman, enters the program as a Merit scholarship finalist and a football letterman. Goodman lists pre-law as his college major.

Second place winner in a national roller skating competition, Ronald C. Gustafson lists his major as mathematics and his interests as debate and drama.

ing her music education here at Willamette. Rosemary's first aim is a spot in music comedy although music education serves as second choice. Her love for musical comedy stems mainly from appearances in musicals at Medford High School and Willamette. No definite opportunities have knocked on Rosemary's door as a direct result of the pageant yet, but she adds that at least she had an opportunity to be heard. In fact she was heard by over 6,000 persons including 400 former Miss America contestants, at Atlantic City.

Rosemary, competing against 53 other young, talented beauties from the United States and Canada, appeared in the evening gown, swim suit and talent divisions, showing everyone "what Oregon girls are made of." For her talent

contribution, Rosemary sang "A Heart That's Free," by Alfred Robyn, the same selection which helped her win her way to the Miss Oregon crown at Seaside.

Before returning home to Salem and school, Rosemary took one final dip in the cool Atlantic waters only to learn afterwards of a recent shark scare in that vicinity.

When Rosemary greeted the crowds in Salem after being chosen Miss Oregon, many spectators felt that they already had a Miss America regardless of the Atlantic City outcome. When asked, before the final decisions were revealed, about her own feelings toward the judges' choice, Rosemary said, "In a way, I've won already. All of the girls have won something—experience. Each of the girls is a queen in her own right."

Voice Wins \$1,000 Scholarship

Activity Packed Weekend Climaxes Frosh Orientation

A tightly packed orientation schedule will continue tonight with an introduction to the functions and fun of student government presented by the new student senate executive committee. Tony Meeker will narrate this and the other portions of the "Spirit of WU" program and introduce the executive officers and the rally squad.

MONDAY MORNING the Student Senate will again swing into action by helping to organize the incoming frosh. During this meeting the frosh will elect their president and secretary pro-tem and receive explanations concerning the operation of student government. The importance of the new class president as a voting member of the student senate will be emphasized.

Registration Saturday morning will be eased by providing the new students with registration booklets

and a chance to talk to their advisors. The guiding lights on the faculty will meet with the students again on Tuesday to iron out any further difficulties with their proteges' study programs.

THE LIGHTER side of the orientation schedule will feature a dance at the YWCA immediately following the spirit of WU program. The Wanderers, a student singing group, will provide the entertainment. The rally squad will also teach some yells and attempt to help the new students get acquainted.

To allow new women students to get acquainted, the YWCA will hold a big and little sister party in the YWCA gym tomorrow evening. This gathering will commence at 6:30 and continue until 7:30 and include tours and speeches explaining the YWCA.

The football game at McCulloch Stadium will follow this event at 8 p.m. All students are invited to come and root.

GOV. MARK O. Hatfield, past dean of Willamette, will speak Sunday night at the evening church orientation. Students are free to meet with the church group of their choice after this event.

WU Expects Post War Record Crowd

This fall Willamette's enrollment is expected to exceed 1200 which would make it the largest enrollment since the post war high of over 1300 in 1948. Approximately 100 transfers and 400 freshmen are expected. As of Tuesday, September 13, 398 freshmen had paid the required deposits for enrollment. This does not necessarily guarantee they will be registering at Willamette but is quite an accurate indication that they will. "Not many are willing to give up their \$50 tuition deposit," Charles Paeth, director of admissions, stated.

This year's freshman enrollment of 398 shows an increase of 82 over last year's enrollment of 316 at a comparable time. The 212 men and 186 women are in approximately the same ratio as in past years. The total freshman enrollment may be as high as 450, but this large a number would present intense housing problems. "The student enrollment at Willamette now has really reached its capacity," Paeth said.

JANET Hawthorne, also an Honor scholarship recipient, held several executive school offices and enjoys a variety of sports. Miss Hawthorne's major is English.

Kathryn Kinsley, recipient of a \$500 National Honor Society scholarship and a Willamette honor scholarship, also proposes an English major.

A MEMBER of the All-Northwest Chorus from 1957 to 1959, Mary Jane Martin enters Willamette with a major in elementary education in music.

Sharon McClelland, national winner in the Voice of Democracy contest and a member of National Thespians and her school debate team, also joins the honors program as an honor scholarship recipient.

VALEDICTORIAN of his class, Albert Duane Pinkerton II, proposes a pre-law major. Pinkerton, a letterman in football, was also president of the Episcopal Young Churchmen and past master counselor DeMolay.

Janice Rademaker, daughter of Dr. John A. Rademaker, plans a possible history major. Miss Rade-

maker was a member of IRL and Chemeketa's, a hiking organization.

MARY ANN Ragland enters the program with a major in either foreign languages or history. Miss Ragland was president of the local group of IRL and a member of FHA.

Recipient of Mary L. Collins and National Merit scholarships, Kristi Scott proposes a major in mathematics. Miss Scott was FTA regional president and a delegate to Girls' State in 1959.

MARY GAYLE Shaffer, a DAR Good Citizenship award recipient, lists her prospective college major as either science or pre-law.

William Slimak, a \$2,000 Rotary scholarship recipient, was president of the local Evangelical United Brethren Youth Fellowship and attended OSC summer institute, 1959. He plans a mathematics or pre-engineering course.

HARTWELL Herbert Whitney, Jr., a pre-med major completes the honor group's membership. Whitney was treasurer of his student body and member of the science club.

Willamette Collegian

Official publication of the Associated Students of Willamette University. Entered at the Postoffice at Salem, Oregon, for transmission through the mails as second class matter. Published weekly except during vacation and examination periods. Subscription rate \$2.00 per year.

JIM CLOSE
Editor

STEWART BUTLER
Publications Manager

Marilyn Sparks — News Editor
Judy Rhorer — Campus Editor
Michelle Monte — Feature Editor
Dave Kitchner — Sports Editor
Jean Laurila — Society Editor
Bev McKinney — Headline Editor

Staff for this issue: Margo Moyer, Marv Hempel, Ken Stewart, Kathy Fiedler, Betsy McCready, Judi Dana, Jack Withers, Lois van Loben Sels, Pete Biewett, Barney Kliks.

Nose in Right Direction

The moving finger writes upon the wall
And Having writ, moves on.
All your piety nor wit shall call it back
To cancel half a line,
Nor all your tears wash out a word of it.

These lines of the ancient Omar Khayyam, were meant perhaps to describe the finality of fate. To YOU as a college freshman, indeed to all students, these lines might be a lucid plea for self-determination. In a less poetic vein, "Keep your nose to the grindstone."

Those of you who are embarking on your college career are in a position to sway the writing finger. It would be foolish to think for a moment that one could completely control fate, but a measure of understanding will make the fate somewhat easier to accept.

A glance at some of the upperclassmen, the witty, the pious and the tearful, will reveal the truth of the poetry.

Willamette offers something of interest and desire to almost anyone. It remains for the individual, however, to search out and grasp the opportunities available.

To end this trite treatise, THE COLLEGIAN extends a warm WELCOME FROSH and a fond WELCOME BACK to those returning.

Beauty Brings Fame

Late last spring, a trim co-ed from Willamette swept through the Miss Salem talent-beauty contest and walked away with the title. The contest victory was the second for a Willamette girl in the two year history of the competition.

Rosemary Doolen carried her title to the Miss Oregon contest at Seaside where she sang her way to the top. Piling up points with her outstanding classical singing voice, Rosie earned the title of Miss Oregon and the right to compete in the national Miss America contest. Again the voice of Miss Doolen earned her recognition and a \$1000 scholarship. Although she fell short of the national title, Rosemary Doolen put Willamette, Salem and Oregon on the map. The COLLEGIAN offers sincere congratulations to Rosemary Doolen.

Frosh Feet Become Tender As Lines Increase in Length

(Editor's note: "Apropos to the present state of affairs of all Willamette students" best describes the following article. Printed last year as a letter to the editor from freshman Virginia Moran, it just may become a traditional reminiscence — or warning to those unfamiliar with college "lines.")

By VIRGINIA MORAN

I wish to report the absence of one all-important item from the Freshman list of "musts" to bring to Willamette. The "jimhandy" little item missing is the common, folding camp-stool. Willamette seems to have a fine old tradition of breaking in the "tenderfoot" Frosh literally.

EARLY IN Orientation Week the process of toughening up tootsies starts in a series (a long, long series) of waiting lines. There are lines for meals, X-rays, signing-out (procedure for toughening girl-type Freshmen only) signing-in, receptions, and of course, REGISTRATION.

The latter item takes all-campus awards in every category of line-

standing and wins sweepstakes for length of time spent in said occupation. The winner in the "longest" division is the line into the Library which convenes at the earliest possible hour, even before breakfast. Just past the Registrar's desk, the "conglomeration" claims the Frosh. Recent winner was the combined women's and men's P.E. lines and the chemistry and biology lines which got a few sociology majors into chem classes, much to their chagrin.

However, a little camp-stool would really serve a double purpose when the now well-oriented Freshman reaches the "payment" lines; it's nearly lunch-time, his feet hurt, and come to think of it, so does his wallet. When he staggers out, sans money, with hunger gnawing, there is still the book-line to be faced, but let's let that wait until we regain some more inner fortitude? And soft shoes.

Papers Trail Traveler's Plane

"All was smooth flying from Ankara to Portland — except for the New York customs." In an effort to safeguard her all important health record and other papers, Lale Refioglu of Ankara, Turkey, packed them in her suitcase. Lale arrived on schedule in New York but discovered her suitcase was trailing behind in Zurich, Switzerland.

CONSEQUENTLY, the Turkish miss spent her first night in America camped in a hospital, the next two nights in the more congenial atmosphere of a hotel.

Lale is on the Willamette campus under the sponsorship of the Panhellenic council. Like her predecessors, Lale will visit all of the sorority houses beginning with Delta Gamma, her present "home." Moving in with the rest of the DG's has been hectic but "I love it," bubbled the Turkish miss.

Lale WILL have much to say in her letters to her parents, brother and grandmother back home. "My father is an importer of cellulose (paper pulp in our terminology)," replied the new frosh when asked about her family. "And my mother is a former Turkish school teacher."

Lale graduated from the American College at Ankara last spring. Thanks partly to the many Americans in her area, she is up on many customs considered very American.

ROCK 'N ROLL and jazz are her musical favorites. "We had informal private parties every weekend and dating is not unusual. Some of the girls even go steady although the families don't approve!"

Television has yet to arrive in Turkey, however, so Lale is enjoying TV tremendously.

PART TIME work is also a rarity

Kappa Sigs to Join Greeks

A new fraternity pin will be seen on campus this year. The alumni chapter of Kappa Sigma fraternity for men is already busy readying plans for Kappa Sigma's part in this year's fall rush. Under the direction of the district grand master, E. E. Seibert, Corvallis, the Salem alumni

chapter will conduct this fall rush with an assist from undergraduate members of the fraternity from Oregon State College and the University of Oregon.

KAPPA SIGMA will come on campus via "colonization," a process in which a local group is organized under the auspices of the national organization. As soon as this group is settled and on its way, it then applies to the national body for a formal charter.

Alpha Phi came on to the Willamette campus through colonization, as did SAE at an earlier date. All of the other Greek organizations originated out of local chapters, already well established, which applied to the various national fraternities for affiliation.

KAPPA SIGMA is the first of two new fraternities which the University eventually plans to add to the Greek roster. The invitation

from WU to colonize on our campus was accepted by the Supreme Executive Committee of Kappa Sigma last spring.

The fraternity was initially founded at the University of Virginia in December of 1869, making the organization a little over ninety years old. This was the first southern fraternity to expand into the North and now boasts chapters in most of the states in the Union as well as in Canada.

"WE SELECTED Kappa Sigma on the merits of its general strength on the local campus level and the national level," replied President G. Herbert Smith when asked on what basis the new fraternity was chosen.

"The organization was very enthusiastic in their application and the fact that there is an active, interested local alumni chapter is also very important," he added. Since colonizing chapters must depend a great deal on their local alumni for assistance and guidance, the willingness of a alumni chapter located near at hand to help out is important.

THE SALEM alumni has a membership of about 50, reports President Smith. Malcolm MacEwan heads the local committee working on the new "colony." Assisting him extensively is Ted Chambers.

Kappa Sigma will be housed in one of the two fraternity units in the wing of the new men's dormitory facing Twelfth Street. The new chapter will move into their house next fall when the building is opened.

Yell Leaders Ask For Pep, Spirit

The eight Willamette yell leaders are hoping for good weather and a large turnout of new and old Bearcat rooters for the first football game of the season tomorrow. They have been practicing all summer and have devised some new yells, most of them short and easy to learn.

This year instead of the usual four rally girls, five will be leading the cheers: Trish Evans, Joann Gay, Hilary Teague, Anne Martin and Sandy Stageberg. Their costumes will consist of gold bulky sweaters with a red "W" emblem, white bermuda skirts, gold bermuda socks and gold shoes. The three male members, Mike Farra, Pat McLarney and Tony Good, will be wearing gold bulky bermuda sweaters, white bermuda shorts, gold bermuda socks and desert boots.

All Bearcats are encouraged to attend the game and one of the yell leaders commented, "We have worked hard and have lots of new ideas so we hope for the student participation to carry them out."

Brother

By JACK WITHERS

Doe
In ring
Of light

Soaring, singing,
Moving whistle
Slow approach
Petting deer

Sudden noise
Deer flees
Brother turns
Eyes wilder
More distant
Than deer's

Councils Post Rush Rules

Rush week begins Sunday afternoon for both sororities and fraternities. Participating sororities are Alpha Chi Omega, Alpha Phi, Chi Omega, Delta Gamma and Pi Beta Phi. Fraternities are Beta Theta Pi, Kappa Sigma, Phi Delta Theta, Sigma Alpha Epsilon and Sigma Chi.

PERTINENT Panhellenic rushing rules include the following:

1. Women who rush must be regularly enrolled Willamette University students.

2. Silence must be observed from 12:01 p.m. Sunday until the time of formal bidding September 15.

3. Only invitations issued through Panhellenic are valid.

4. A rushee may not accept two consecutive dates in one day with the same organization.

5. Both rushees and sororities are expected to abide by Panhellenic rush rules, and any infringements may result in the penalization of the house and/or the girl.

TOMORROW afternoon at 3 there will be a pre-rush meeting in Waller hall for all rushees. This meeting enables the rushees to meet the Panhellenic delegates and counselors. Panhellenic advisor Dean Regina Ewalt will speak to the group on important points to remember while rushing.

Panhellenic delegates will be available for consultation during rush in the Panhellenic office in Waller hall. If a rushee has a problem and can not find someone in Waller hall, she may contact Dean Ewalt or Elaine Buckinger, presi-

dent.

DRESS FOR the rush parties up until preference is school clothes, and apparel for preference is "dressy dresses" and heels.

Women's rush begins Sunday at 1:30 p.m. and the afternoon's parties end at 5 p.m. Rushees will be divided into five alphabetical groups and each group will visit each house. The houses will feature open house tours which will give the rushees a chance to see each house "from top to bottom."

RUSH PARTIES Monday run from 3 p.m. until 9:15 p.m. Each house invites girls to these functions, and rushees may attend five parties. Rush is continued Friday, Sept. 23, with parties from 6 to 9:45 p.m. Again, the functions are

invitational and the rushees may attend up to four parties. Parties Sept. 24 begin at 1:30 p.m. and continue until 5.

First and second preference parties are Sept. 25. Second preference parties begin at 2:30 p.m. and first preference parties begin at 4 p.m. A rushee may attend one first preference and one second preference. Bids will be issued by the Panhellenic office and at 9:30 p.m. new pledges may go to their respective houses and spend the night.

MEN'S RUSH rules published by the Inter-Fraternity Council stress that both rushee and fraternity are held responsible to maintain these rules.

During fraternity open house periods the rushee must visit every fraternity and sign their guest books to be eligible for pledging. Up to the last date series, a rushee may go to any fraternity without an invitation at any scheduled times.

Other rules include the following:

1. Starting on Sept. 24 and continuing until Oct. 9, there shall be no bidding or pledging.

2. A rushee must be a regularly enrolled Willamette student.

3. An organized rush function is a gathering of ten or more men.

MEN'S RUSH also begins this weekend. The Kappa Sigmas will hold their rush functions in the Bearcat cavern the first two days and in private homes in Salem during the remaining days of rush.

Sunday and Monday afternoons, fraternities will sponsor a series of round robins, each lasting an hour. Both evenings there will be coffee dates from 9 to 11.

After Monday evening rushees will make a preference of their top choices in houses. Coffee dates in the evenings will continue through Tuesday, Wednesday and Thursday of next week. It is important to remember that silence is in effect except during times scheduled for rush parties or coffee dates.

ON FRIDAY, each house holds three functions, one in the afternoon and two in the evening. Each of these parties is two hours long. Rushees may attend three or more of these functions.

Five separate two-hour functions will be held Saturday. At invitation, a rushee can go to all five of the fraternities participating in rush on Saturday. Tentative order of these parties is Sigma Chi, Beta Theta Pi, Phi Delta Theta, Sigma Alpha Epsilon and Kappa Sigma. This order rotates from year to year.

Bids are issued that night at 9:30.

YWCA Plans Sister Party

Willamette's Campus YWCA is sponsoring its annual big and little sister party tomorrow evening from 6:30 to 7:30 in the YWCA gymnasium. All freshmen women and upper class women new to Willamette and their big sisters are invited to attend.

After guided tours around the YWCA a short welcome program will feature advantages of campus YWCA membership. Among the benefits the YWCA offers Willamette women are use of the newly-built pool, study rooms, television and athletic equipment.

Big sisters may contact their little sisters tomorrow only to make arrangements to attend the party. The program will be brief because the first WU football game of the season is at 8 p.m. However, Panhellenic rules do not permit big and little sisters to attend the game together, according to Judy Triplett and Joann Gay, chairmen of the big and little sister program.

Housing Being Found For Homeless Students

The stumbling block of men's housing is being overcome according to Dean Walter Blake, Willamette dean of students. Fifty men have been housed in the YMCA after the quarters had been recon-ditioned according to a reciprocal agreement held between the university and the Y. One hundred fifty men are living in other off-campus residences and the remaining few are in the process of being housed.

Injuries Down, Starting '11' Up For Puget Sound Encounter

"Injuries are at a minimum and we should have our starting eleven ready to go against Puget Sound," said line coach Jerry Long yesterday.

THE BEARCATS have been preparing for tomorrow night's contest for two weeks and coach Ted Ogdahl has had his 50-odd men sweating and straining to reach top game condition by Saturday. Ogdahl opened practices with a full-scale scrimmage and has kept the squad busy for two solid weeks.

With two returning Little All-Americans, guard Marv Cisneros and speedy halfback Stan Solomon, the Bearcats sport 18 returning lettermen and 10 out of 11 starters. Willamette's backfield comes back

intact save for a halfback slot which, at the moment, seems to be going

to Jim McCaffery, a transfer from Boise Junior College.

"It is the defense which can hurt Willamette, especially the secondary perimeter, and we are working on it every day," says Long.

Northwest Conference coaches have picked the Bearcats to finish a close second behind the Lewis and Clark Pioneers in this year's title chase. The Bearcats are capable of upsetting the dope sheets however, and in the opinion of some people, they will take the football title for the third consecutive year.

The NWC coaches picked the rest of the conference to finish in this order: Linfield in third spot, followed by Whitman, Pacific and College of Idaho.

- Sept. 17 - University of Puget Sound, Salem
- Sept. 24 - Western Washington College, Bellingham
- Oct. 1 - Pacific University, Forest Grove
- Oct. 8 - Lewis & Clark College, Portland
- Oct. 15 - College of Idaho, Salem
- Oct. 22 - Linfield College, Salem
- Oct. 29 - Whitman College, Walla Walla
- Nov. 12 - University of B. C., Salem

Varsity Downs Scrubs 72-6

A full scale scrimmage saw the Willamette first stringers run over the second team Saturday morning at McCulloch stadium, but Coach Ted Ogdahl still was far from satisfied with the condition of his Bearcats.

The Bearcats made it through the encounter missing injuries, but Ogdahl commented, "we still are in lousy physical condition."

Ogdahl experimented with a series of backfields but had the most success with Jim McCaffery and Stan Solomon at halfbacks, Tommy Lee at quarterback and Kevin Nagel at fullback.

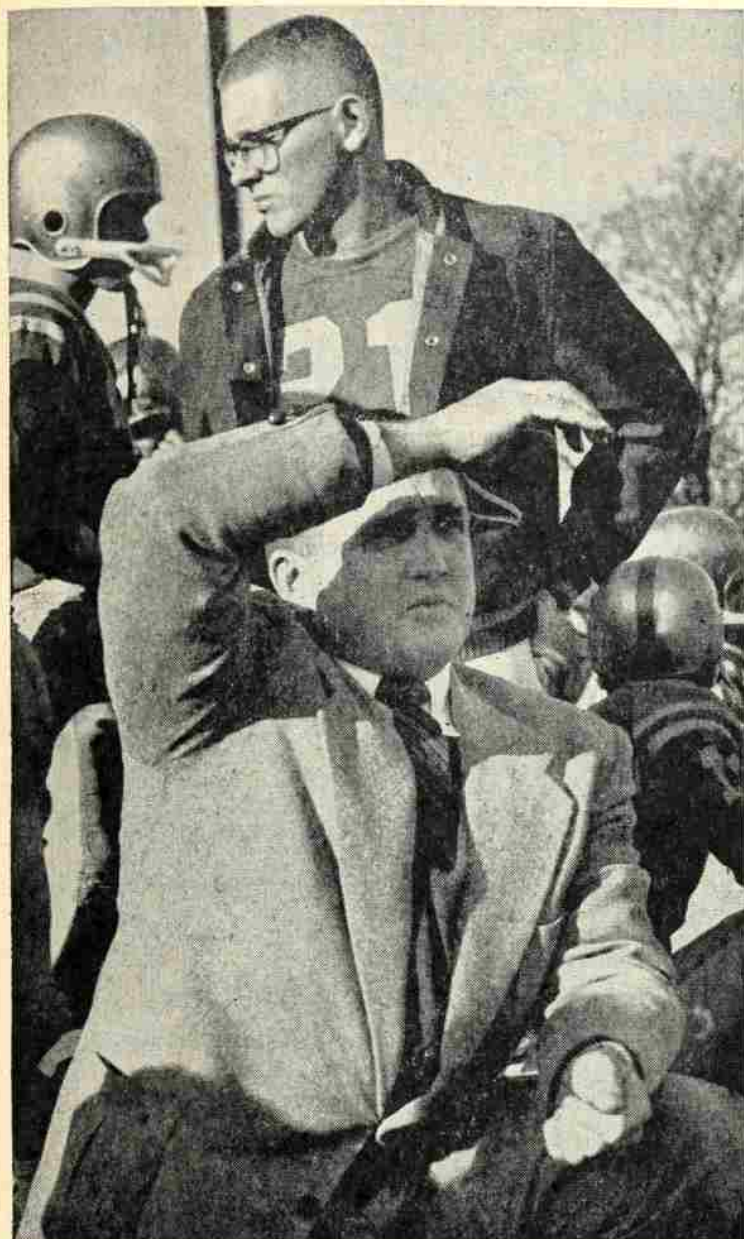
Line coach Jerry Long praised

Jim Robinson and Don Green. Green is a 230-pound sophomore from Roseburg. Veteran Doug Austin and freshmen Dick Carney and Jim Foster also drew plaudits.

Four players were on the sidelines Saturday with injuries. Keith Burres is supporting a cast on his right ankle from an injury sustained during opening day practice. Ern-

est Nihi, the 283-pound tackle, was nursing a sprained ankle while Jeff Keizer was out with a leg injury and Tom Toombs was sidelined with a bad knee.

The first team racked a score of 72 points. The lone touchdown for the second team was a 75-yard kickoff return by Tom Miller from Mt. Angel.



Grid coach Ted Ogdahl casts a critical eye over his charges, as they ready for tomorrow night's season opener against University of Puget Sound. The Bearcats have been picked by the Northwest Conference coaches to run second in the NWC race this year. (See story) Photo courtesy of the Oregon Statesman.

Old Tennis Courts Give Way To New Men's Housing Unit

Willamette University joins the ranks in the present crash-program to educate more students - casting tennis courts aside in the drive for a brighter youth.

Ripping out the courts, Willamette is constructing a men's housing unit in their stead. New courts are scheduled for this spring, depend-

ing on the weather and the finances, tennis-coach Lestle Sparks says.

The old courts occupied the 12th Street location from before 1929, at the time consisting of asphalt and a dirt-clay base. Then students got busy and constructed some new courts in '29. These were followed by a third group in 1936 which were used until this year.

While the new S. Capitol and Trade street site is being prepared Willamette will use the Bush Park courts, alternating with South Salem High School. Sparks, also director of intramural activities, says the absence of the courts will possibly present a problem for spring tennis intramurals since both the Willamette and South Salem teams will need all the available space for meets and practice.

The new courts and their composition will depend on available monies Sparks says, and this will in turn hinge on costs of current dorm-building. Sparks hopes to get asphalt courts with a green canvass background. The asphalt will wear better and should be easier on the players' feet, Sparks commented.

Campus Groups To Play Flagball

Flags will be flying the second week of school says intramural director Lestle Sparks.

The flags are part of the paraphernalia worn by competing teams in the fall flagball league. Each man wears two flags attached to a clasp and he is "tackled" when one of these flags is jerked from him.

The competition among Willamette living organizations and the Law School should start Saturday, September 24, if organization plans go as expected said Sparks. There are three leagues, a Saturday, a Tuesday night and a Wednesday night league, providing ample opportunity for every student to participate.

Sparks will hold a meeting in the gym for all organization managers next Monday where plans for the coming season will be discussed and the schedule determined.

THE
CUPBOARD CAFE
498 STATE ST.



Subscribe Now
at Half Price*

You can read this world-famous daily newspaper for the next six months for \$5, just half the regular subscription rate.

Get top news coverage. Enjoy special features. Clip for reference work.

Send your order today. Enclose check or money order. Use coupon below.

The Christian Science Monitor P-CN
One Norway St., Boston 15, Mass.

Send your newspaper for the time checked.

6 months \$5 1 year \$10
 College Student Faculty Member

Name _____

Address _____

City _____ Zone _____ State _____

*This special offer available ONLY to college students, faculty members, and college libraries.

"Cleaned right & pressed right by Burrights"

Burrights Cleaners
198 SOUTH CHURCH STREET
Phone EM 3-4242

KANDYKORN STORE

We service to schools, parties, and different doings.

124 High St. S.E.

Ph. EM 2-9226 Salem, Ore.

WELCOME BACK WILLAMETTE STUDENTS

To

JIM'S SHOE SERVICE

Shoes - Repairs

183 N. High St.

Most male look since the Stone Age!



Corduroy by MCGREGOR

Unmistakably the correct look on Western campuses this Fall: the clean, trim lines of this three-piece sport suit of fine wale cotton corduroy. Jacket with narrow lapels, flap pockets, check lining. Vest reverses from corduroy to checks, matches the jacket lining. Slacks tailored pleatless and slim. In subtle new Colors of the Hebrides.

765 CORD 3-PIECE SPORTING SUIT \$32.95

Wipman's of Salem

Campus Shop - 1st Floor

S&H green stamps with every purchase

Booksters Have Ark, Wait for Flood

Once again the bookstore is preparing to handle the deluge of students which will descend this week and next to buy needed books and supplies.

STORE HOURS will be from 8:30 a.m. until noon and from 1 p.m. until 4 p.m. This Saturday only, the bookstore will keep regular week-day hours, from 8:30 a.m. until 4 p.m. in order to fill student orders.

Today the lines will be filled with law students who will get first preference over other students wishing to buy books. Tomorrow will be the freshmen's day to make hay, while next Monday has been designated as a "wide open" day with a first come, first served basis.

TRUE TO FORM, there will be many students getting up with the squirrels to be first in line and there will be those who will wait in an attempt to avoid the lines altogether.

To help get Willamette's struggling students through the lines quicker, there will be a door keeper, an in and out door plus four book lines. Students are urged to have their checks and money handy to keep things moving. Also a list of courses would help the checkers.

MRS. ENID RONDEAU, bookstore manager, said that there will be a list of the books not in or of a small quantity listed on the stu-

dent body bulletin board, outside of the bookstore door and on the blackboard in the store.

Students are urged not to put their names in new books until they are sure they want them as no books will be exchanged that have been written in or that are kept more than two weeks.

Mrs. Rondeau also stressed that students should have their sales for future reference. Also only books and study supplies will be sold — no sweatshirts, stuffed animals, etc. — until the book rush is over.

Program to Acquaint Frosh With Student Senate Work

Tonight the class of 1964 will be introduced to the new Student Senate under the direction of ASWU president Tony Meeker.

"SPIRIT OF Willamette" will acquaint the new class with a broad concept of student government functions by introducing such committees as Homecoming, Parents' Weekend, Varsity Varieties and Freshman Glee.

According to Meeker, the Student Senate will afford a fairer representation than the old type of student council. The ever increasing enrollment would tend to make the old system of government large and cumbersome.

RATHER THAN a representative from each living organization, two students represent IFC (Inter Fraternity Council), two are from Panhellenic and two from the Independent Students to be chosen on a house rotation basis. All will be voting members of the Senate. One student will represent the Law School and AWS (Associated Women Students) will be represented by its president.

These senate members will be joined by ASWU officers and class presidents. This group will lead Willamette University as voting members of the Student Senate.

NON-VOTING members of the government will include the Collegian editor and all activity managers. A member of the faculty selected by the Senate for a one-year term and the general manager of the student body makes up the new Student Senate.

A change in the weekly meeting date of the student government from Wednesday to Monday will enable representatives to report back to their own living organization meetings. Meeker believes this

Smith Shatters Longevity Record

Records are made to be broken—according to an old saw—and that's just what happened at Willamette University as the first day of September rolled around.

September 1 marked the first day of the 19th year as president of Willamette University for Dr. G. Herbert Smith and broke a record for longevity among Willamette University presidents. The longest previous term of office of president at Willamette was filled by Dr. Carl Gregg Doney, who headed the college during the 18-year period from 1915-1934.

Dr. Smith, who has been Willamette president since September, 1942, came to the Willamette campus from DePauw University where he was Dean of Administration.

Choir Needs Voices

Auditions are being heard this week and next for those interested in becoming members of the 62 voice Willamette choir. There are 44 voices remaining from the 1959-60 choir and those musicians selected last May. Rehearsals will begin next Wednesday at 3 p.m.

Students wanting to try out should sign the schedule sheet posted near Fine Arts room 145W. Vocal ability, choral experience and interest in maintaining a high standard of choral performance are the bases for admission according to Donald M. Gleckler, director.

Buildings Receive Attention From Carpenters, Painters

By BITSY McCREADY

Nearly every building on campus received attention from squads of carpenters and redecorators during the summer months. Anyone who has ventured into the Cat Cavern has noticed that the gruesome green has been replaced by restful browns. New booths have been added to accommodate students, and all of the chairs and booth seats have been recovered.

MUSIC STUDENTS entering their secluded hall will discover that new trends have been put on the stairways and linoleum has been added to each landing. In addition to these changes the Music Library has been enlarged by converting Prof. Ralph Dobbs' old studio into library space. An additional studio was added by splitting one large one.

Further improvements took place over the summer with the construction of much needed shelving in the main library and with the enlargement of the library counter. Upon examination the student will also notice that study conditions have been somewhat enhanced by the complete redecoration and re-painting of the library interior.

SHOULD ANYONE be wondering what is happening to the tow-

ers on Eaton Hall, fear not, for they too are being repaired. According to Dr. Richard Petrie, financial vice president, there was no danger of falling brick, but some of the wood in the towers was rotting.

The old historic temple, Waller Hall, and the Alpha Phi house both received new roofs and the Waller organ was given a rejuvenation.

NOT TO BE outdone, Collins Hall was adorned with a very modern green house. The 10 by 11 foot room has been a dream of the Biology department for some years and is a welcome addition.

The law school was not totally neglected as it now has much additional shelf space for the many books which that institution has.

PROBABLY the most welcome changes, especially for the incoming freshman, occurred in Lausanne Hall. This old landmark now boasts a beautiful lounge in wedge-wood blue with carpets matching the walls. Lausanne also has new steps both on the south and north sides.

Dorm to Open For Co-eds

Jason Lee not only fathered Willamette University but fathered Lucy Anna Lee, whose name has been given to one of the two new women's dorms almost completed on the southwest end of campus.

Lucy Anna Lee House, on the corner of Mill and Winter streets, is tentatively scheduled to open its doors tomorrow. The other of the two residence halls will be north of Lee House and is named after Emily J. York, Willamette's first woman graduate of the class of 1859. January 1, 1961 is the contract date for the opening, and the dorm will be held to be used for further expansion.

Both dorms accommodate 48 women and a housemother. Mrs. Edith Wissenbach, retired housemother of Doney, has been announced as the housemother of Lucy Anna Lee house.

Contract bid for the women's dorm was \$420,000.

The new men's dorm, financed by private gifts and federal loans, will house 4 separate living groups and will house 240 men. Two fraternity units will face 12th street. A central unit will house 100 men, while the final unit, facing the gym, will house 80 independent upperclassmen.

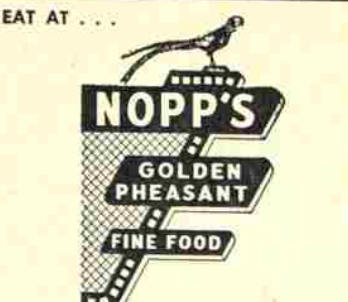
Contract bid for the cost of the men's dorm is \$1,036,300.

This ad worth **\$100** toward the purchase of any long play record costing **\$3.98** or more. Good on these dates only Sept. 16 - 17 - 19



THE SALEM RECORD SHOP
428 Court St. N.E.
Open Mon. & Fri. nights till 9

EAT AT . . .



NOPP'S GOLDEN PHEASANT FINE FOOD
Open 11 A.M. - 8:30 P.M.
Sunday 12:00 - 8:30 P.M.
248 Liberty NE

University Drug
Prescriptions, Magazines & Cosmetics
Russ Powell
Your Friendly Pharmacist
The Campus Drug Store
On State St.

Brennen Announces Band Audition Dates
Students interested in auditioning for positions in the University Band are to make appointments with Maurice Brennen, band director. Band tryout hours are today from 1 to 5 p.m., Monday from 2 to 5 p.m. and Tuesday from 3 to 5 p.m. Applicants are particularly needed in the tuba and oboe sections.
Rehearsals will begin at 4 p.m. next Wednesday. Band members receive one hour of credit per semester for their participation.

Convo Manager Announces Semester's Schedule, Plans
"Convocation is an all student function. Programs are supplied by students, the budget is provided by students and to be successful, convocations must be supported by students through regular attendance," emphasizes convocation manager Sue Lewis.
Again this year, convocation, held each Tuesday morning at 11, will be compulsory. According to Miss Lewis it is important that each student occupies the seat he wants next Thursday since these same seats will be assigned to him for the remainder of this semester.
A change in announcements at convocations has also been scheduled by Miss Lewis. Monday night before each convocation is the deadline set for announcements to be left at the student body office.

- CONVOCAION SCHEDULE**
- Sept. 22—Dr. Smith, Dr. Zeigler, Dean Blake.
 - Sept. 27—Class meetings.
 - Oct. 4—Walter R. Stahl, M.D. films Russia.
 - Oct. 11—Investment panel from Portland.
 - Oct. 18—Cancer Society film, Salem M.D.
 - Oct. 25—Roland Hayes, tenor.
 - Nov. 1—Freshman Glee, student senate.
 - Nov. 8—Gerald Johnson, atomic energy.
 - Nov. 15—Willamette music teachers.
 - Nov. 22—Thanksgiving chapel.
 - Nov. 29—Jim King, Lebanon superintendent of schools.

- Dec. 6—Dr. Harry Dillen, Linfield college president.
- Dec. 13—Willamette University choir.
- Dec. 20—Vacation.
- Dec. 27—Vacation.
- Jan. 3—Class meetings.
- Jan. 10—Jim McGregor, Olympic basketball coach.
- Jan. 17—Student speeches.
- Jan. 31—Finals.

Debaters to Convene
Experienced and aspiring debaters will convene for the first time this Tuesday at 3 p.m. in the speech office of the Fine Arts building. Although the meeting is scheduled as a debaters gathering, all those interested in any branch of speech activities are both invited and urged to attend, according to Dr. Howard Runkel, professor of speech. Speech activities for the rest of the year will be outlined at this meeting.

ABC Printing Co.
481 State St. EMpire 3-1882
Dance Programs
Invitations
Stationery
General Printing

Gay's fine candies
for any occasion
135 N. High

Let Us Help You With Your Back-To-School Laundry Problems

12th STREET LAUNDROMAT

RUTH AND DILLON JONES, OWNERS
(1937-38 WILLAMETTE GRADS)

You Do It
or
We Do It

Open
24
Hours

Look for the Quonset Hut at 1815 12th St. S.E. — Between Rural and Hoyt. Your clothes always turn out beautifully fresh and clean when you do your laundry at the 12TH STREET LAUNDROMAT.

WILLAMETTE U. STUDENTS

FREE WASH
SOAP
DRY
COFFEE OR PEPSI
DONUTS

FRIDAY, SEPT. 23
SATURDAY, SEPT. 24
9 A.M. TO 9 P.M.