

Willamette Collegian

1842—Willamette University in its Second Century—1951
"In Age There is Wisdom"

Bol. LXIII Salem, Oregon, November 9, 1951 No. 9

Lack of Voters Kills Election; New Ballot Monday, Tuesday

Willamette students failed to either pass or reject the two proposed amendments to the constitution. Only 410 of the 501 majority needed turned out to vote.

Because of the election failure, the student council has

Next Sat. Deadline To Drop Classes Without Flunk

The deadline for dropping classes is next Saturday, according to Harold Jory, registrar. Any student withdrawing from a course later than this date will receive a semester grade of "F" unless permission has been granted by the committee on Scholarship and Petitions. The only exception to this rule is in the case of serious illness.

Any student who drops a class before this time will also receive a grade of "F" if he is failing in that course at the time of withdrawal.

agreed to re-hold the election Monday and Tuesday of next week.

Larry Smith, in charge of the balloting, says, "If students would vote when they pass the booth set up in Eaton, without putting it off until later, we'd probably have a majority turnout the first day."

President Bliss said, "Even though this is a small election, deciding only two amendments, every student should put down his vote. The student council loses its meaning if the students don't support it."

Again, for the benefit of voters, the two amendments are:

1. "The yell king and song queen shall be elected by the student body elections in the spring. They shall in turn head a committee composed of themselves and former Rally Squad members to select two assistant yell leaders and three assistant song leaders."

2. An amendment to Article VIII of the Constitution to include the Collegian editor as a non-voting member of the council.

Psycho-Drama Second Curtain Tonight

By Mary Louise Lee
Collegian Editor

In a somber, mid-Victorian setting, a murderer is loose to prey upon others! This murderer has many a psychological quirk, there are various reasons why he is what he is. A judge, played by George Hocking, leaves the verdict up to the audience. We may determine to what degree this man is guilty.

The dress rehearsal on Wednesday was entertaining and exciting. Due to a Wednesday night deadline, plays must be reviewed by the Collegian at this early date.

All performances were not perfected by any means, but the cast of "Night Must Fall" promises a showing of much work and worth for last night and tonight.

To the reviewer, the most outstanding performers are Dan, Kent Lawrence, and Mrs. Terence, Ann Ellsperman. Lawrence, playing the psychotic killer, manages to convey the appearance of insanity throughout the performance, though he shows it to the cast only a few times. His actions, as the self-confident, cocky little bellhop, are excellent, as the movements are sure, brash, and eccentric at the same time. The Welsh accent, at the Wednesday performance, was a little heavy, forcing the audience to listen carefully to some lines.

Mrs. Terence, the housekeeper, adds just the right amount of humor, keeping the drama from becoming morbid. Her inflections and innuendoes, with just the right amount of eyebrow raising, are very fine.

Mrs. Bramson, Margaret Conklin, as the semi-helpless invalid, plays an interesting part which shows much development. It is difficult to play a part, be an older woman, and skillfully manipulate a wheel chair at the same time. Her peevish comments and slighting remarks succeed in gaining much hate from the rest of her associates. She is a little spry for an old lady, movements sometimes reflecting a twenty-year old rather than a widow past sixty-five.

Olivia Grayne, Shirley Dean,

plays the ingenue with success. Her character builds to show that she is nearly as insane as Danny, her odd speeches show a depth of feeling and understanding.

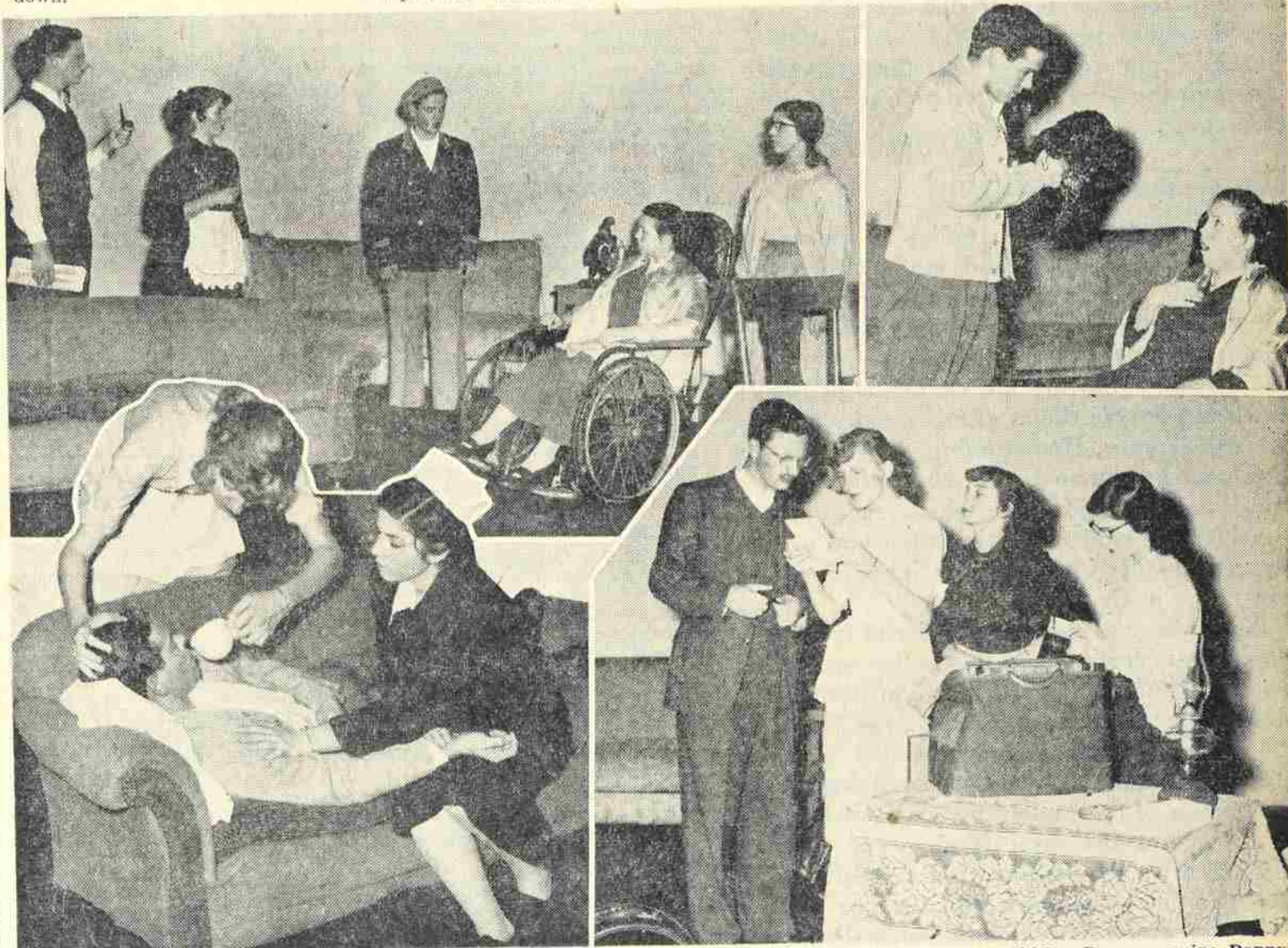
Hubert Laurie, Phil Hammond, playing the part of rejected and slightly boring suitor, enters his part with real finesse. His apologies are humorous, as are his actions. During the play, one wonders why Olivia turns him down.

Dora Parkoe, Rosie Wilhoit, who introduces Dan to the Bramson household, is a properly dumb household servant of the stylized British type. Her emotions are well shown, the movements clumsy, as they should be. The writer, Emlyn Williams, has given to Dora's character a remarkable insight into human life at rare and infrequent times.

Inspector Belsize, Garold

Meinke, and Nurse Libby, Jean Kyle, play only bit parts, but add much to the unfolding of the plot. Belsize is a fiftyish inspector from Scotland Yard, and Nurse Libby gives an effective "Toodeloo" as she leaves.

"Night Must Fall," under the direction of Dean F. Graunke, will be a memorable play for Willamette students and townspeople. It has been several years since such an entertaining play



The audience and Bramson household are introduced to Danny, Kent Lawrence, as he swaggers into their lives. (upper left) Danny, preparing for his second murder. This time it's Mrs. Bramson, Margaret Conklin, the helpless old woman who has befriended him. (upper right) Mrs. Terence, Ann Ellsperman, Hubert, Phil Ham-

mond, Dora, Rosie Wilhoit, Olivia, Shirley Dean, examine Danny's luggage to confirm suspicions that he is a murderer. (lower right) Danny, after a heavy attack of jitters and conscience, faints, and is revived by Mrs. Terence and the nurse, Jean Kyle. (lower left). Photo by Phil Wimer

Bidu Sayao Sings Tomorrow; Tickets Are Still Available

By Darrel deChaby

The first artist of the Willamette-sponsored Distinguished Artist series for this season will be the Brazilian soprano Bidu Sayao who will appear tomorrow evening at 8 p.m. in the Salem high school auditorium. Tickets for the series are still available and may be obtained in the student body office until 4 p.m. today. Available are both season tickets and single admissions, in all price ranges.

Bidu Sayao's career has been a brilliant one since her debut. She has triumphed in every field she has entered, whether it was opera, recital, radio, or as soloist with orchestra. Today she is, by virtue of her magnificent voice, superb musicianship, and personal charm, one of the greatest concert attractions in the world.

College Leaders Meet

Six students will attend the annual Oregon Federation of Collegiate Leaders in McMinnville today and tomorrow, announced Sperm Bliss, ASWU prexy.

Student officers and leaders from Oregon colleges meet once a year to elect officers and discuss campus problems. Delegates will hold discussions on various college activities, such as publications, finance, school spirit, and cultural problems.

Delegates to travel to Linfield are: Marge Aldinger, Sperm Bliss, Harley Hoppe, Tom Joseph, Mary Louise Lee, and Tom Scheidel.

The favorite of the Americas, Bidu Sayao was born in Brazil and now makes her permanent home in this country. She began to sing seriously at the age of 14, studying in her native Rio de Janeiro and later in Paris with the great Jean de Reszke, one of the singers who made the golden age of opera what it was.

Emerging from de Reszke's tutelage as a finished artist she returned to Rio to make her concert debut at the Teatro Municipal. Her success was immediate and within a short period she sang and was acclaimed in some of the greatest opera houses of the world, La Scala in Milan, the Paris opera, and Buenos Aires' Teatro Colon.

Bidu Sayao made her American debut in New York in 1936 singing Debussy's "Blessed Damsel" under the baton of Arturo Tos-

canini. Critics reported "such a voice as 'the stars had when they sang together' . . ." The following season she joined the Metropolitan Opera company, making her debut there in "Manon." It was in this opera that she recently closed the season for the San Francisco opera company.

Slim, chic, vibrant, with auburn hair and dark eyes, Bidu Sayao has won and retained an unchallenged position as one of the greatest concert artists of our time. Her concert here will be Miss Sayao's only appearance in the northwest this season. The name, incidentally, is pronounced Bee-doo Sigh-yow.

Miss Sayao, when appearing here in 1943, was selected Sweetheart of Kappa Gamma Rho, a local fraternity which became Beta Theta Pi.

Campus Chest To Open Drive With Pyramid System Monday

This year's Campus Chest drive, featuring a pyramid system of solicitation, will start rolling Monday morning, Chairman Felix Calkins announced this week.

Ardith Bailey, chairman of solicitations, has set up a program which will insure thorough coverage of the student body. The first ten persons appointed will call on ten students who will in turn see ten others. It is hoped that everyone on campus will contribute some amount to the Chest. Members of the Big Ten committee are Ardath Durbin,

Don Empey, Bob Packwood, Thelma Klepp, Joyce Frost, Wally Snyder, Janice Fehlberg, Carolyn Vester, Jim Wood, and Frances Smith.

Aside from student contributions, proceeds from Varsity Varieties, the all-school talent show climaxing the drive on Saturday night, November 17, will help reach the \$1,200 goal. Rollin Cocking, chairman of the show, assures an evening well worth the fifty cent ticket, and is hoping for a capacity audience in the Salem high school auditorium.

Give to the Campus Chest

Another Campus Chest Drive will begin Monday morning. Willamette's goal is \$1,200, slightly over one dollar for each student.

This year's campaign is a little different from past years. We are giving 50 per cent of all proceeds to the World Student Service Fund, to supplement a great need on the education level in foreign lands. We also know where our money is going. To Assam, India, where the University of Garhchi is located. One of UNESCO's, another Chest recipient, projects, is to send books to the university each year.

When we are approached to give our dollar, pledge or pay up right away, so the goal can be reached in a hurry.

Remember, this is the one big drive of the year on the Willamette campus which is building materially for peace. M.L.L.

Wanted: Voters

We really find out how interested students are in student government when little issues come up for a vote.

The student council goes to the trouble of recommending something, giving each student a voice through his vote, when it could just as well pass or reject the amendment itself without ever letting the student in on it. Someday, however, the students would wake up to a lot of rules and amendments that they didn't even know existed.

Only a minority voted. Now we have to have an entirely new election. All 410 who voted before will have to vote again, plus 90 or so others, in order to decide the issues at hand.

Student government is attempting, on a smaller scale, to achieve the same ideals of good government as a national government. The ideal democratic government gives every individual the right to a voice, but, unfortunately, it also gives him the free will to be interested or remain disinterested.

The whole point is, GET OUT AND VOTE. Your voting on the student level indicates the kind of citizen you are likely to become. M.L.L.

Dead Week Policy

Dead Week is a joint policy of the administration, faculty, and student body. Under this plan, it is agreed that members of the faculty will not schedule examinations during the period immediately preceding and following the weekends of the three major traditional events on the Willamette campus, Homecoming, May Weekend, and Freshman Glee. These three activities are all major undertakings requiring considerable student participation and evidence a quality of production in which we can all be justly proud.

The failure of a small minority of faculty members to cooperate in this policy was apparent to a small, but sad, group of students during the recent Homecoming Dead Week. The fact that the number of professors evidencing this attitude was small, and that the percentage of the student body affected was slight is not the disheartening factor. Rather, it is the failure of the faculty to abide both by the spirit and the law of a policy in which they, themselves, were legislative participants.

It is sincerely hoped that in the future the obligation to uphold existing policies will be more apparent to all concerned. S.B.

Willamette Campus History Scene; Author Finds Rumors and 'Firsts'

By Charles Ruud

Behind a cluster of bushes in a soggy patch of ground near the rear of Eaton hall are some stalwart reminders of Willamette's historic past.

Behind the present site of Larmer Transfer Company near the intersection of High and Liberty Streets the house of Willamette's founder, Jason Lee, was built during the dawn of the golden west. In a north-easterly direction from the house was located the first brick kiln in the Oregon Territory under the direction of Walter Judson who was the first surveyor in the area with the Jason Lee party and who later laid out the plans for the City of Salem.

After the first kilning, many of the bricks were used in the lining of a well in the district south-east of the site of Parrish Junior high school. Later Judson's grandson removed the well and the bricks were used by the university in its Centennial celebration for the construction of a fireplace.

After the Centennial the bricks were taken by Professor Herman Clark and placed in the museum on the second floor of Waller hall with the original intention of building a model cabin from them. The museum work was interrupted by the V-12 program of the last war which had a priority on the space. The bricks, which still bear the working marks of their manufacturer, and perhaps the fingerprints of Jason Lee, remain behind Eaton hall as emblems of our noble founders.

Rumor Exploded

A rumor recently passed around the campus that Art students were deriving all of their inspiration from a table in the Art building which was once used in the medical school of the Oregon Institute which later became Willamette. The tables were supposedly used for the dissection of cadavers by the medical students just to keep in practice for livelier things to follow.

After today the art students must resort to more conventional means of inspiration for the rumor was exploded by Dr. Morton Peck, curator of the herbarium. He told of his experiences with the tables as Professor of Biology when the department was in the basement of Waller hall in 1908, and later moved to the second floor of Eaton when it expanded.

According to Dr. Peck the tables, which are four feet at one end and taper off to two feet on the other, were used in the biology classes as work tables for students in order to let each one get an equal share of light which filtered through the one window of the biology lab.

Willamette "Firsts"

If only it were known how many "firsts" have taken place at Willamette the school would be famous. Coming around the horn on the USS Lausanne in the days of yore was the first safe in the area, now peacefully resting in the Collegian office and being used by school publications. The first piano in the Oregon Territory was reportedly burned in a fire in Waller hall and was replaced by an instrument whose historical value now benefits the mice in the basement of the music school. This Leipzig product was made in 1870 of European rosewood.

The campus on which Willamette is now located was first claimed on a government homestead grant by Chloe Clark Wilson and her husband. Wilson Park across State Street from the school is named after Wilson. Mrs. Wilson was the first teacher at Oregon Institute and was the only one for some time. Several of her gowns and peddle-pushers are now in the possession of Miss Lois Latimer, of the Home Economics department.

Upon hearing the organ in Waller hall chapel many have remarked, "That organ sounds like it came from hades." To clear up this understanding it might be mentioned that the organ came from the old Taylor Street Methodist church in Portland and was built in 1880.

Kampus Kaleidoscope

By DARREL deCHABY

LAST TUESDAY the Robert Shaw Chorale sang here—and they sang magnificently. The precision of their performance alone was a delight while, under the direction of their brilliant leader, the emotional and spiritual qualities of the music transcended its difficulties. Included in the program were the Mozart "Requiem," Brahms' "Liebeslieder Waltzes," "Trois Chansons" by Ravel, and excerpts from Gershwin's folk-opera, "Porgy and Bess."

The Requiem was the real treasure of the program.

One could have left after its performance in the first half of the program and been completely satisfied. The Ravel Chansons were captivating and, after the Mozart, proved to be the most satisfying to us—though in an entirely different vein. In his aptly-titled book "A Smattering of Ignorance," Oscar Levant mentions that Gershwin used to refer to Ravel as "the French Gershwin." Though this remark seems a little presumptuous, we know that Ravel did study the jazz idiom and even wrote a jazz piano concerto. Anyway, as Gershwin followed hard upon the heels of Ravel, it was obvious that the former did not suffer too much by comparison. The Shaw Chorale was most generous with its encores, throwing many bits of smaltz into the already brimming musical pot which were interesting only because they were well done and amusing only because they were different.

WEDNESDAY NIGHT was the second in the series of UNESCO movies in Waller hall, "Rembrandt," with another large and appreciative audience in attendance, according to Jim Jackson. The next film will be shown Friday, December 14.

We had to miss this one, darn it. That combination of Loughton, Lanchester, and Lawrence must have been terrific.

Info for the Campi . . .

To the Editor:

The Marion County Chapter of the American Red Cross is very happy this year to be able to cooperate with the students of Willamette university in their annual drive for funds. Due to the national and international obligations of the Red Cross it is not possible for it to become a part of local fund raising organizations such as the Community Chest. However, a recent ruling allows local Red Cross chapters to conduct simultaneous drives with their agencies among the members of a group such as the students of Willamette. Under this plan the Marion County Chapter is cooperating with the Campus Chest in a drive for funds for both organizations.

During the current year the Marion County Chapter of the Red Cross expects to spend over \$31,000 for services to individuals in this community. A large share of this money is spent helping service men and their families overcome unexpected problems. Financial assistance to families of men overseas sometimes runs into many hundreds of dollars for a single family.

Other expensive programs include the blood program. Students at Willamette are well aware of the need for giving blood.

The Red Cross hopes to be of real assistance to the Campus Chest and the students in their drive.

Frank M. Parcher,
Manager

THURSDAY NIGHT saw the first presentation of "Night Must Fall" which will be presented again tonight at the Parrish auditorium. Those who saw the play last night say it's a smash. Director Graunke won many plaudits for his outstanding directing. We'll see you there tonight.

TOMORROW EVENING Sayao sings. There's no point in joshing you along. This concert is going to be far from a sell-out unless something happens but quick. Support from the Willamette student body, for which the series was inaugurated, has been very slight. The only possible reason I can think of for lack of support is shortage of immediate finances. This happens, unfortunately, but if you are really interested in going to this concert and those to come, fill out the following and take to the student body office for your ticket.

I have paid \$..... on a \$..... Distinguished Artist concert ticket. I promise to pay the rest by December 1, three weeks from the date of this first concert.

Signed

Address

Please give the series a vote of confidence if you want it to go on. It's putting Willamette on the map and you're hearing some of the world's greatest concert artists at prices that can't be duplicated elsewhere. And it's for you. LET'S PACK THAT HOUSE FOR SAYAO.

Willamette Collegian

"In Age There Is Wisdom"
Since 1875

Official Publication of the Associated Students of Willamette University

Member Associated Collegiate Press
Rated "All-American"—1949-50

Editorial and Business Offices
Ground Floor, Waller Hall, Salem, Oregon Phone 3-3088
Entered at the Postoffice at Salem, Oregon, for transmission through the mails as second class matter. Published weekly except during examination and vacation periods. Subscription rate \$1.50 per year.
Represented for national advertising by NATIONAL ADVERTISING SERVICE, INC., college publishers representatives, 430 Madison Ave., New York—Chicago—Boston—Los Angeles—San Francisco—Portland—Seattle.

MARY LOUISE LEE, Editor

BILL MacDOUGALL, Publications Manager

News Editor..... DON SCARBOROUGH
Associate News Editor..... KEITH LAWRENCE
Campus Editor..... KENT LAWRENCE
Society Editor..... SHIRLEY HELWEG
Feature Editor..... JIM MILLER
Sports Editor..... STAN NELSON
Re-Write Editor..... ANN KLINDWORTH
Ad Manager..... TOM EDWARDS
Circulation Manager..... PAUL BARKLA
Photo Editor..... DICK ISAAC

REPORTERS: Joan Bryne, Marjorie Coleman, Jane Connell, Darrel deChaby, Dave Field, Judy Finch, Irene Fussler, Pat Gentle, Jean Helgerson, Barbara Jackson, Hal Johnson, Adele Lampson, Marjorie Leonard, Dick Lewis, Suzanne Lovely, Betty Mayfield, Jackie McIlvanna, Julie Mellor, Donna Pallin, Joan Pangborn, Pete Pratt, Winifred Rodes, Chuck Ruud, Burke Samuelson, Duane Shield, Ted Smith, John Swensen, Erwin Weber, Marilyn Wenz.

Probation Due Motorists for Campus Parking; Jeep May Deposit Autos on Sweetland Field

Motorists who park cars on campus will be put on probation, said Dean Mark Hatfield this week. No more warnings will be given offenders, he said.

A student whose car is found in the driveways behind Baxter and near the gym will be placed on probation and after a third violation the car must be sent home before he can attend classes and take tests.

Hatfield aimed his warning particularly at the SAE's and Sigma Chi. A fuel truck had to be turned away one day because cars were blocking the driveway. A meat truck had the same difficulty and it took a special appeal to force the owner of the car to move it.

Cars possibly may be hauled into Sweetland field by the university jeep, Hatfield said. They will not be towed away by a private company or the state police as was originally planned. The expense of removing towed autos from Sweetland may halt some illegal parking, he added.

Meanwhile the Salem city council has provided funds to cover half the cost of improving a parking lot at 13th and Ferry. But, according to Hatfield, no other action has been taken to alleviate the parking situation. Just when the lot would be opened was not revealed.

The two-hour parking limit on 12th street will also be removed soon, he said. Twenty parking

spots on both sides of State street will also be put on a one-hour limit for use by persons on official business or part-time students. The space in front of Eaton will be reserved. No date for conversion of the stalls was given.

Late Arrivals Drop Decisions To Ultra-Accurate D. C. Clock

Physical science students will no longer have any excuse for arriving late to class. For this week they have had the opportunity to correct their watches to an accuracy of one one-millionth of a second. The classes have spent this week listening to station WWV of Washington, D. C.,

which transmits the Bureau of Standard's exact time all over the United States.

This broadcast actually performs three services. First, there is a time standard which ticks every second for four minutes. This is followed by a minute in which the correct time is given both in Morse code and the spoken word.

The second standard is a hum in the background of the second-ticks. This hum alternates between 400 cycles per second during one four minute period and 1000 cycles per second for the next four minute period.

These hums are used to tune correctly musical instruments. As the third service, the program is transmitted at 15 megacycles, giving a standard for all broadcasting stations.

Physics professor Dr. Robert Purbrick states that the quartz crystal oscillator giving a time accuracy of one one-millionth of a second is soon to be outmoded by an atomic clock giving a time accuracy of one twenty-millionth of one second.

Lost Book, Etc. Found

Check at Bookstore for lost books. "We also have one football, one umbrella, one medallion," says manager Delia Larson.

This Week At Willamette

Friday to Friday
November 9 to 16
TONIGHT 8 p.m. — "Night Must Fall" at Parrish junior high school.
TOMORROW 8 p.m. — Bidu Sayao at Salem high school. 8 p.m. — Willamette vs. Linfield at McMinnville.
SUNDAY 2 p.m. — Alpha Chi Omega tea. 6 p.m. — Christian Youth group at their respective.
MONDAY a.m. — Campus Chets drive begins.
TUESDAY 10 a.m. — Dr. Victor H. Sword at convocation
WEDNESDAY 4 p.m. — Student council in Eaton Rm. 2 4 p.m. — YWCA in Chresto cottage.
THURSDAY 10 a.m. — "The Storm" by Theta Alpha Phi

Why Pay More?

Long Playing Records (33 1/2 R.P.M.) 30% Off

Factory New! Every Record Guaranteed! For FREE Complete Catalogue and Price List, write to:

Record Haven Stores

(Dept. C)
520 W 48th St.,
New York 19, N.Y.
If in N.Y.C. visit our
Midtown stores:
1125 6th Ave.; 1145 6th Ave.;
1211 6th Ave.



Soprano Bidu Sayao will appear as the first artist in the series of Distinguished Artists tomorrow at 8 p.m. in the Salem high school auditorium. Tickets for the concert can be purchased in the student body office until 4 today.

Students Protest Proposed Dismissal of Prof; 200 Sign Petition Citing Merits of Kollmann

Arousing considerable interest and comment on campus this week is a petition being circulated protesting the proposed dismissal of Dr. Edward Kollmann, assistant professor of philosophy.

According to Joyce Edgell, one of the originators of the petition, the protests will be submitted to the administration and to prominent alumni.

Eleven petitions are in circulation. About 200 names have been counted on the three petitions returned so far to Miss Edgell.

In view of diminishing enrollments, several other profs will be dismissed, according to Pres. G. Herbert Smith.

The petition reads: "This is a protest in regard to the forthcoming dismissal of Dr. E. C. Kollmann, associate professor of philosophy. We, the undersigned, feel that this

dismissal is in the best interest of neither the university nor the students. In the past four years he alone has developed the philosophy department to its present peak enrollment and has broadened and enriched the intellectual development of students on this campus.

"It is seldom that one finds a teacher with such understanding characteristics: A broad background of knowledge as well as a firm grasp of his own field; the ability to get his material across to the student and to engender individual thinking. Furthermore his interest in the student and in student affairs has made him an integral part of campus life.

"If the school is financially unable to sustain the existing departments, we feel that it would be less harmful to the University to cut down on the

personnel of larger departments than to eliminate the separate philosophy department. We believe that the existence of a separate philosophy department is necessary for the individual thinking and broad outlook essential for the liberal arts university."

Dr. Kollmann has been at Willamette since 1948. He received his B.S. degree from Bowdoin college and his M.A. and Ph.D. degrees from Harvard university. He is advisor for UNESCO, the philosophy club, campus chest, and is on the advisory board of the campus Y.M.C.A.

He has given lectures on philosophy, notably on Oriental Philosophy last year at Vancouver, and now has papers under consideration for publication by "Frontier" and possibly the "Journal of Philosophy, East-West" philosophy magazines.

Foreign University Students To Attend Convention at WU

Twenty-six foreign students from the University of Oregon, Oregon State, Pacific university, Linfield college, and Lewis and Clark college are being invited to spend the week-end on Willamette's campus in connection with "International Week-end" next Friday and Saturday. The YWCA is sponsoring the week-end.

A dinner in honor of the foreign students will open the activities Friday night with students from Willamette invited to attend. After the dinner there will be an informal open house sponsored by UNESCO, and period for discussion and for meeting the foreign students.

Saturday morning a tour of the campus and other spots of interest in Salem will give the guests some idea of life at Willamette university. They will

also be guests at the Willamette-Chico State football game during the afternoon.

Varsity Varieties will furnish the Saturday evening entertainment. The students will attend church services on Sunday morning. Guests will be staying at the different living organizations on the campus.

Chairman for the International Week-end is Marie Deetz and her committee includes Dolly Montag, Carolyn Vester, Diana Hobart, Pat Moll, Phyllis Muhs, and Heather Strange.

'Storm' Players Ready for Chapel

Cast and crews are beginning final preparations for the one-act play "The Storm," to be presented before the student body in the Thanksgiving chapel next Thursday. The program will be presented in Waller hall.

Theta Alpha Phi, the drama honorary, which is producing the play, and Shirley Dean, director, have designed the production so as to emphasize the references to a way of determining values that is contained in the script.

The set will be composed of representative pieces of furniture and "flats" denoting a fireplace, door, window, table and chairs.

KAY'S
WOMEN'S WEAR
480 State Salem

Sundin the Tailor
Custom Tailor to Men and Women
ALTERATIONS and REPAIRS
196 South Liberty Street
Salem, Oregon

all weather Shoes for Men
• Value • Comfort
Shoe Repairs
• Dependable • Convenient
JIM'S SHOE SERVICE
175 North High

WILLS MUSIC STORE
EVERYTHING MUSICAL
Vernon and Edna Wiscarson - Owners
432 STATE STREET PHONE 3-4959

The way to get an A!
Get those supplies at the . . .
COMMERCIAL BOOK STORE
141 North Commercial Salem

White's Lunch and Drive In
1138 South Commercial
Phone 3-3267 or 2-1495

TOMORROW NIGHT'S STARTING LINEUPS

OFFENSIVE LINEUPS

Willamette		Linfield	
RICK BINGHAM	LE	JIM BEARD	
DON HOSFORD	LT	AL WILLS	
KEN COOPER	LG	CLIFF SAXTON	
WALLY RICHARTZ	C	AL SOUTHWELL	
BOB CODY	RG	PAT SMITH	
BOB MILLER	RT	TOM HUGHES	
JOHN MARKOSKIE	RE	JACK LEONARD	
BENNY HOLT	QB	MEL FOX	
CHUCK LEWIS	LH	JERRY LeBLANC	
CHARLIE NAONE	RH	RANDY HARRISON	
CHARLIE KOANI	FB	AD RUTSCHMAN	

Northwest Conference Standings

	W	L	T	Pct.	PF	PA
Lewis and Clark	4	1	0	.800	176	71
Pacific	3	1	0	.750	73	30
College of Idaho	3	2	0	.600	80	95
Linfield	1	2	1	.333	51	74
Whitman	1	2	1	.333	40	83
Willamette	0	4	0	.000	30	97

Last Week's Results
 Whitman 20, Willamette 12
 Lewis and Clark 42, College of Idaho 14

This Week's Games
 Willamette at Linfield
 Pacific at Whitman

Doomed Bearcats Eye Final Conference Triumph Bid at Linfield Tomorrow at 8

Doomed to finish dead-last in the Northwest conference race, the Willamette footballers travel to McMinnville tomorrow night to meet the fourth place Linfield Wildcats.

For the first time in the 27 meetings of the two schools, Linfield will be the distinct favorite to win the game. Linfield stopped a 25 game losing streak against Willamette by dropping the Bearcats two years ago and followed that with another win last season. Having lost four straight conference contests, the Bearcats will go all out to end league action this season with a victory over the Wildcats.

Mentored by Paul Durham and Roy Helser, the Wildcats, who sport a 3-2-3 record for the year, have upset Pacific 6-0, tied Whitman 7-7, and have lost to

Lewis and Clark and College of Idaho by scores of 40-12 and 27-26 in NW loop play. In non-conference games, Linfield defeated Eastern Washington 27-2 and Southern Oregon 43-6, tying Humboldt State and Oregon College of Education by scores of 20-20 and 6-6 respectively.

Rutschman Key Threat
 Coaches Durham and Helser have 12 lettermen on their squad this year and have been banking on a trio of experienced backfield performers to carry the squad through the season. They are Ad Rutschman, Randy Harrison and Mel Fox who will be starting in the backfield against Willamette tomorrow night.

Rutschman, a sophomore full-back, is considered to be one of the best backs in the conference. With his tricky running, he is effective through the line and on the outside. Last year he topped his teammates on the ground and in the air and was their leading punter.

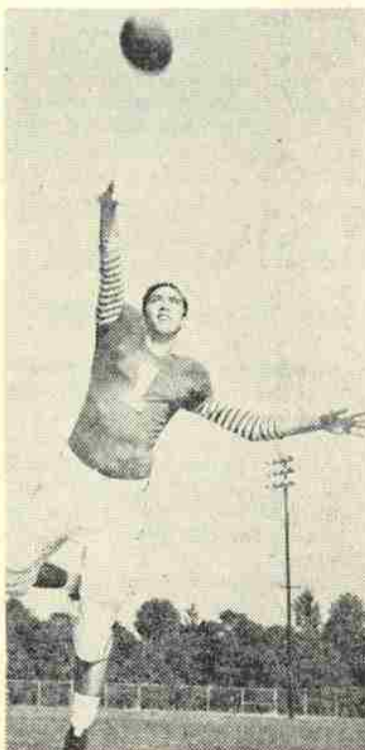
Randy Harrison, a senior and two-year letterman, and quarterback Mel Fox, a three-year monogrammer, combine talents with Rutschman to make the Linfield T-formation click. The three scooters are largely responsible for the Wildcat's success this season. Harrison reached paydirt four times against SOCE to lead his team to an easy victory. The fourth member of Linfield's lightning-like backfield is Jerry LeBlanc who has shown tremendous speed for the Wildcats.

Wearing the Cardinal and Purple on the forward wall will be ends Jim Beard, a freshman, and Jack Leonard, a junior with two years experience. At the tackle posts will be Al Wills and Tom Hughes, who are both two-year monogrammers.

All-Star Returns
 Guard positions will be handled by freshman Al Conlee and senior Cliff Saxton. Saxton, with three years of experience behind him, holds the honor of being twice selected on Northwest Conference all-star teams. In the pivot position will be Al Southwell, a non-letterman in his second year at the McMinnville school.

For the underdog Bearcats little change will be made in their lineup. Last week against Whitman, the passing of Benny Holt and running of Charlie Koani and Chuck Lewis stood out. But again Willamette seemed to lose that final punch as they went down to defeat.

Field General



Benny Holt takes a few practice throws as he warms himself up for the Linfield-Willamette game set for tomorrow night at Linfield. Holt will start at the quarterback slot and will call the signals for the Bearcats. (Statesman cut).

Scrimmage Today

Coach John Lewis will conduct a full length scrimmage this afternoon in the gymnasium in order to select the squad which will take to the maple boards against the Oregon State Beavers December 1.

WU Hoopsters to Begin Third Week; Final Squad Cut Looms Near at Hand

The Willamette university basketball squad, already cut to 16 men, will move into its third week of practice Monday. The final cut to 13 or 14 men can be expected over the weekend or soon thereafter.

With the opening game against the Oregon State Beavers only three weeks away and the squad cut down to workable size, Coach Lewis will turn his attention from fundamentals to play patterns and find a starting five for the December first clash.

The team is made up of seven returning lettermen, three transfers, three non-letter winners from last year, and a trio of freshmen. The seven lettermen are headed by Lou Scrivens, Hugh Bellinger, Ted Loder, and Doug Logue who all held down starting assignments in the past season. Other returning monogram winners are Larry Smith, Claude Nordhill and Dick Brouwer.

Bob Smith, Cliff Girod, and Ray Williams are the non-letter winners. Giant 6' 8" Jack Swartz, Dick Mase, and Bob Sheppard were the only transfers able to stick it out on Lewis' varsity squad. Two Salem boys, Daryle Girod and Larry Baggett, plus Dick Hoy from Newberg, are the only freshmen still in the running for varsity positions. From early reports it looks

like Daryle Girod may give Hugh Bellinger and Lou Scrivens a battle for the starting guard posts. Leading contenders at the moment for the back court assignments are Ted Loder, Doug Logue, Larry Smith, Dick Mase, Jack Swartz and Bob Smith. The Bearcats are looking forward to a successful season with almost every spot having a strong bench behind the starter.

The schedule:

Home Games	
Oregon State	Dec. 1
CPS	Dec. 7, 8
Hawaii	Dec. 15
Chico State	Dec. 17, 18
Whitworth	Dec. 21
CWCE	Dec. 22
*Pacific	Jan. 18
*Lewis and Clark	Jan. 19
*Lewis and Clark	Feb. 9
*Whitman	Feb. 15, 16
*College of Idaho	Feb. 18
*Linfield	Feb. 22
Games Away	
Portland	Dec. 4
Pacific Lutheran	Dec. 28
CWCE	Dec. 29
*College of Idaho	Jan. 4, 5
*Whitman	Jan. 7
*Linfield	Jan. 12
*Pacific	Feb. 2
*Lewis and Clark	Feb. 8
*Linfield	Feb. 23
*Pacific	Feb. 29

*Denotes conference games.

OCE Volleyballers Tip 'Cat Women in Opener

The Oregon College of Education WAA squad defeated the Willamette volleyball team by a large margin of 44 to 18 Thursday, November 1, at Monmouth to open this year's activity for the Willamette women.

The Willamette squad, which is dominated by freshmen, could not keep up with the smooth-running OCE team as they dropped the match to the college squad. The match was played with a time limit of 15 minutes.

Repair Service

Clothing neatly and promptly repaired or remodeled by expert seamstress . . . some sewing.

★
MRS. MILO TAYLOR
 1407 No. Winter
 or Call
 3-5778

UNIVERSITY BOWL

BOWL FOR YOUR HEALTH
BILLIARDS

OPEN 11 A.M. to 12 P.M.
 1340 STATE STREET

Ace's University Barber Shop

Three Barbers

1256 State Street

KENNEDY'S CITY CLEANING WORKS

1245 State St. — Phone 3-6897
 Masonic Bldg. — Phone 3-7779
 1110 Union St. — Phone 2-0544

CLAYTON FOREMAN

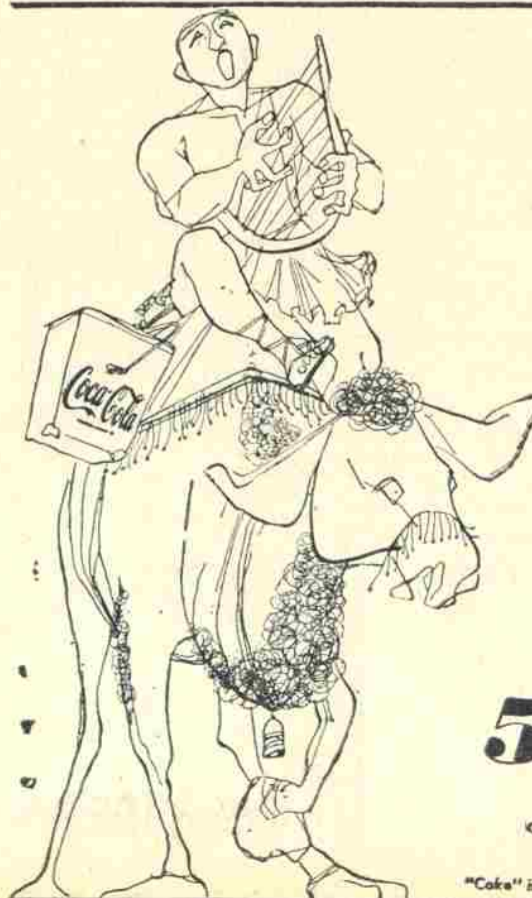


AN OBSERVATION—B. C.

... a pleasant companion reduces the length of a journey

Publius Syrus

And what better companion could anyone have than a handy picnic cooler filled with delicious Coca-Cola. It's a sure way to travel refreshed.



5¢

BOTTLED UNDER AUTHORITY OF THE COCA-COLA COMPANY BY

"Coke" is a registered trade-mark. © 1951, THE COCA-COLA COMPANY

by *stander*

STAN NELSON

Will 'Cats Win Another One?

Going, going, going . . . will Willamette's dwindling Bearcats ever win another game this season? Fans have now suffered through four consecutive losses on the home field, some silently, others more vociferously, waiting and hoping for the Bearcats, undoubtedly the greenest team on the face of the earth, to win a game. But it seems that their inexperience is just too large a handicap to overcome. Three times the 'Cats pushed the ball within the 10-yard mark of Whitman last Saturday night, once to the one-foot line, but never on any of those occasions did they reach paydirt. It's not that the Bearcats aren't putting out while they are out there, but because of their great lack of experienced players they can't produce the needed punch to shove the ball across when the other team braces itself in an all out effort.

What we have been waiting for, but have yet to see is a repeat of the 'Cat's slam-bang style of game that they played early in the season against College of Idaho. What has happened to that team that played so marvelously up there we'll leave to the psychology experts to figure out, we would like to see them return to the form they showed at Caldwell just once. The club might possibly play just that type of game tomorrow night now that they are hopelessly doomed to finish in a solo position in the conference cellar. They have everything to win at Linfield, nothing to lose; the tension is off now. We hope the Jasons get madder'n hops now and go out and lick the sox off the Wildcats. The students could show that they are still behind the squad by showing up in mass tomorrow night at McMinnville to root them on.

AA's Still Red Hot Group of Athletes

Intramural touchball is rapidly drawing to a close with the annual round-robin between the top two teams of the "A" and "B" leagues now fighting it out for supremacy. That group of independent town students who call themselves the All Americans and who won the intramural plaque last year are again reigning supreme as they are well on their way to repeating their touchball championship they won last year. Those guys are out there playing because of sheer love of competition, nothing more. They are not an organization, just a group of widely separated town students who otherwise would have little to do with activities at the university.

Note to bowlers: We of the Collegian sports staff would love to print results of your activities in the paper. Let's get hot and get the results compiled in time for publication, otherwise we can use your space for something else quite adequately.

SAE's to Battle AA's Today Noon; 'A' Team Loses; Drops from Playoffs

The intramural football double elimination playoff lead will be at stake at noon today when the All-Americans, champs of the "A" league, meet the SAE's runner-ups in the "B" circuit.

The winner of today's game will go into the football finals which is set for next Wednesday. The loser will meet the Phi Delt's next Monday to determine who will take on today's winner in the touchball finals.

The Phi Delt's dropped the SAE "A" league team from the playoffs yesterday when they edged out the SAE's by a score of six to nothing.

The only score of the tilt came early in the first half when Paul Nieswander intercepted a Warren Mulkey pass on the SAE 30-yard line. On their first play Phi Delt Nieswander threw a touchdown pass to Rollin Cocking for the score. Bill Bissell's pass for the extra point was incomplete, but the Phi Delt's still had their 6-0 victory margin.

The All-Americans ran up against stiff competition as they took on the SAE "A" leaguers in the Tuesday afternoon clash. The off-campus boys started two drives in the game, but the stubborn defense of the SAE's halted both drives within striking distance of their own goal line. In the final period an off-course pass by Warren Mulkey was intercepted by Daryle Girod who twisted and turned for ten yards and the AA score. Elliott Nosaka's flip to Larry Scheelar accounted for the extra point and the All-Americans had themselves a seven to nothing victory.

In the playoff opener the SAE "B" club proved too strong for the Phi Delt's as they nabbed the noon encounter with a narrow six to nothing triumph. The score came in the third period as Dick Brouwer tossed a 25-yard touchdown pass to Bob Swift after a determined down-field march. The greater part of the tussle was played in mid-field as the squads were evenly matched.

Cardinal and Gold Grab Undisputed Title to Cellar Spot As Willamette Gives Missionaries First Victory, 20-12

By Hal Johnson

Inability to take advantage of scoring opportunities left the Willamette Bearcats all alone in the cellar spot of the Northwest conference standings as the Missionaries from Whitman whipped the home-townners 20-12 last Saturday night on the McCulloch stadium turf.

Costly fumbles and keen blocking were featured in the contest, which was played before the smallest home crowd this season. Most of the fumbles were at Willamette's expense, and sharp blocking was shown by the surprising Washingtonians.

'Cat rooters' hopes were high when the Willamette gridders scored an early touchdown and kept Whitman on their own side of the fifty for a good part of the first half. Benny Holt, freshman field general for the Jasons, flipped a pass to Chuck Lewis, speedy halfback, and Lewis dodged and squirmed his way to pay dirt. The conversion kick was no good, but the 'Cats led, 6-0.

WU Muffs TD

Willamette got a real break

on the kickoff. The Missionaries fumbled the ball and Ray Fretheim fell on it on the Willamette 47. After driving 52 yards to the Whitman one-foot line, Chuck Koani, who had teamed with Lewis in the long drive, fumbled and Whitman recovered.

The Missionaries kicked and Fretheim brought the ball back to the Whit 23. Willamette got to the 11 before they fizzled, thus throwing away two perfect scoring chances.

This was the turning point of the ball game. On the fourth play, Neil Goff, unsung frosh halfback, raced 70 yards almost untouched to tie up the game. On the next play, Whitman went ahead 7-6 as the try-for-point kick sailed through the uprights.

Goff Sprints Again

The 'Cats still fought savagely, however, and taking the kickoff, they drove from their own 29 to the Whitman six yard marker. But for the third consecutive time, the long march fizzled as two passes fell incomplete. On the next play, Goff again sprinted for a long gain, this time it was 69 yards to the Willamette

25 where Mickey Coen dragged him down at the last minute. Four plays later the score stood at 13-6. It ended that way at halftime.

The Whitman scoring ended early in the second half when Gene LaPage passed 24 yards to Ken Meyer on the 'Cat five yard marker and then Meyer went the remaining five yards to score.

A few plays later, Mickey Coen intercepted his second pass of the night on the Bearcat 45 and chugged 55 yards through a broken field to put Willamette back in the game. The TD made the count 20-12, but the try-for-point kick was wide, leaving an eight point deficit which the 'Cats couldn't overcome.

Whitman held the edge in statistics, although Willamette's passing was superior.

On the Gridiron				
SCORING				
	TD	PAT	TP	
Chuck Lewis	4	0	24	
Mickey Coen	1	0	6	
Elmer Haugen	1	0	6	
Charlie Koani	1	0	6	
Bob Shangle	1	0	6	
Charlie Naone	1	0	6	
Rick Bingham	0	3	3	

RUSHING				
	TC	YG	Ave.	
Charlie Koani	60	316	5.2	
Chuck Lewis	88	406	4.6	
Bob Hall	19	76	4.0	
Bob Shangle	33	100	3.0	
Elmer Haugen	4	11	2.8	
John Kent	20	45	2.2	
Rick Bingham	29	61	2.1	
Bill Van Horn	6	13	2.0	
John Markoskie	1	2	2.0	

PASSING					
	Atts.	Comp.	Int.	Yds.	Pct.
Chuck Lewis	6	5	1	65	.833
Benny Holt	37	20	4	307	.540
Rick Bingham	29	15	2	142	.520
John Kent	24	8	3	83	.333
Mickey Coen	3	1	0	32	.333
Charlie Naone	12	3	3	56	.250



Thanksgiving
away from home!

Let friends and loved ones know you're thinking of them with a Hallmark Thanksgiving Card from our complete selections.

Home of Hallmark Cards
Edward Williams
330 Court

Attention Managers

All intramural managers are requested to turn in their rosters for intramural basketball to Les Sparks before November 21.

Basketball play will start November 26 with the "A" league playing on Monday and Wednesday nights. The "B" and "C" circuits will play on Saturday mornings and afternoons respectively.

JACKSON JEWELERS

Diamonds, Watches and Silverware

225 N. Liberty St. Phone 3-5640

HOLLY JACKSON

COON'S



TOP HAT

1275 State St.

GAY'S FINE CANDIES

For the Best in Quality and Taste

Phone 2-9235 135 N. High

New


NYLON-SOX

Hand Framed Argyle

\$2.50

ALEX JONES

121 N. High St.



SEARS ROEBUCK AND CO.

Friendliest Store in Town

550 North Capitol

Satisfaction guaranteed or your money back

AWS Auction Features Shoe Shines



Gussie Krause and Barbara Sloan shine Bill Lasswell's shoes on the stage of Waller hall during the AWS auction held at Tuesday convocation. Tom Scheidel, auctioneer, is shown in the background accepting bids for car washes, cakes, scarves, mittens and special faculty stunts. Proceeds from the auction will be used to supplement the AWS scholarship fund.

The Amen Corner

Wesley group will meet for fellowship and a buffet supper at six o'clock on Sunday evening. Guest speaker for the evening worship is Professor Clark. All students are invited to attend.

For the continuation of the

Troth Told; Alums Wed

A miniature car with the words "Just Engaged" on the back decorated the dinner table at Chi Omega Monday evening when Joyce Crouch announced her engagement to Jim Anicker. President of the sorority, Jo Colony, revealed the news by reading a poem which was found in a pair of tiny "old shoes" attached to the car.

A sophomore majoring in literature, Miss Crouch is a member of Chi Omega. Anicker is a freshman in the Law school and is affiliated with Sigma Chi.

No date has been set for the wedding.

Herstrom-Skirvin Wedding

Two former Willamette students, Betty Herstrom and Bob Skirvin, will be married Sunday afternoon at 4:30 in the First Congregational church in Salem.

Sally Ogle will be maid of honor for her sorority sister, and Dick Skirvin will be best man. A reception immediately following the wedding will be held at the Delta Gamma chapter house.

The bride-elect completed her junior year at Willamette last spring, and is a member of Delta Gamma. Skirvin, a member of Phi Delta Theta, graduated in economics in June.

The couple will make their home in Harrisburg.

discussion on the book of James, Inter-Varsity members are asked to come next Tuesday at 6:30 p.m. The meeting will be held in the Seminar room of the library.

Sunday a communion breakfast will be served by Newman club members at St. Joseph's school after the 9 o'clock Mass.

A special movie will be shown by Phi Zeta Christo at the First Christian church Sunday evening at 8 o'clock. Janet Obert will lead the discussion after the movie, followed by worship led by Ann Gibbens.

Canterbury club will meet in the parish house of St. Paul's Episcopal church Sunday at 6:30 in the evening. Discussion and vesper services will be held.

Mr. Elmer Berg will speak on "Christianity and Business," at Westminster fellowship Sunday at 6 p.m. Refreshments and a concluding worship service will follow.

Delta Gamma's Initiate Eleven

Following formal initiation ceremonies held last Friday evening eleven women wear the anchor of Delta Gamma. The new members are Ardath Durbin of Weiser, Idaho, Edna Marie Hill, Sylvia Hastings, and Marilyn Quamme of Salem, Edith Wheeler of Wendell, Idaho, Marguerite Dawson of Longview, Wash., Betty Foster of Seattle, Jo Anna Hirtzel of Chihuahua, Mex., Nancy Pratt of Clackamas, Nancy Gore of Ketchikan, Alaska, and Harriet Aller of Yakima, Wash.

A banquet honoring the initiates was held at Nohlgren's restaurant the following evening.

Banquet Set

Members of Mu Phi Epsilon will hold a banquet Sunday evening to commemorate the 48th anniversary of the founding of the music sorority. Members, pledges and alumnae will take part in the 6:30 affair which will be held at the Pine Inn.

Dean Melvin H. Geist will be the featured speaker of the evening. President Gladys Blue is making arrangements for the banquet, assisted by Doris Loder, Virginia Benner, Doris Hale, and Harriet Aller.

WILLAMETTE

Social Chit

SHIRLEY HELWEG, Editor

'Sweetheart' Finalists Serenaded by Sigma Chis

Eleanor Payne, Frances Smith and Sally Jo Grimm have been chosen to be members of the Sweetheart of Sigma Chi court for 1951-52. The finalists were serenaded individually by the Sigma Chis on Tuesday, Wednesday and Thursday evenings at their living organizations and were presented with bouquets of white roses.

Members of the court will be

special guests of the Portland Sigma Chi Alumni association today at luncheon at Meier and Frank's. A plane ride over Salem will be given the three finalists this weekend, and Jack Larsen, former Willamette student, will pilot the plane.

A formal dinner will be held at the Sigma Chi chapter house Monday evening in honor of the finalists. The Sweetheart of Sigma Chi will be chosen at that time and will be crowned at the Sweetheart ball next Friday evening at the Crystal Gardens.

Tea Honors Mrs. Stanley

Alpha Chi Omega is holding a tea Sunday afternoon in honor of Mrs. Elvah Stanley, new house-mother. The tea will be held at the chapter house from 2 to 4 o'clock.

In the receiving line will be Jackie Johnson, house president, Mrs. Elvah Stanley, honoree, and Mrs. Ralph Smithers, Mrs. Vernon Gilmore, and Mrs. L. T. Johnson.

The decorations for the affair will be arranged by Gloria Kainu. Evelyn Martin is in charge of the refreshments, and invitations have been sent by Linda Gragg. General chairman of the tea is Jean Stewart.

The function will also serve as an open house. All students, faculty, and friends are invited to see the new Alpha Chi Omega chapter house at this time.

YWCA Meeting

The relation of the campus YWCA to the Salem YWCA will be discussed by Mrs. William Coruthers at the YWCA meeting Wednesday at 4 p.m. in Chresto cottage. Members of the campus Y advisory board will be introduced by a short skit and impersonation of each adviser.

University Drug

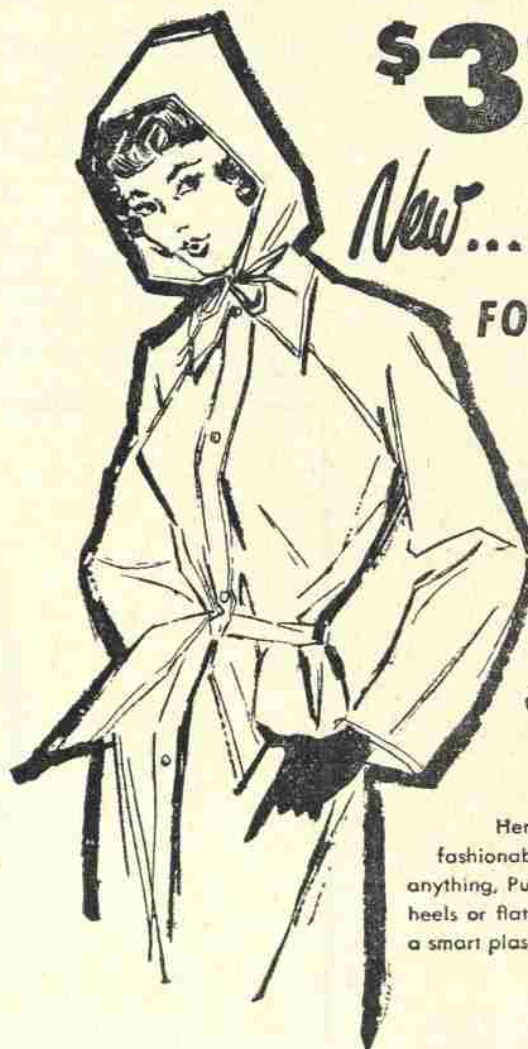
- Prescriptions
- Cosmetics
- Magazines

Conveniently Located at

1220 State Street
Phone 3-6527

Head to toe weather protection

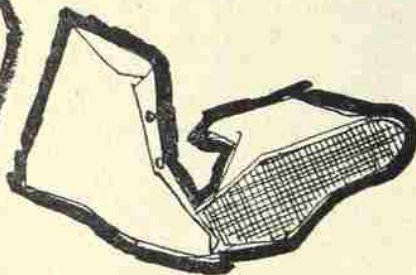
\$3.98



New... weather **VOGUE**

FOUR PIECE RAIN ENSEMBLE

- Fashionable Raincoat
- Tie-On Hood
- Puddle Boots
- Carrying Case



Here's high fashion in rainwear for wet days ahead... A fashionable raincoat designed to wear three ways and over anything, Puddle Boots with reinforced, anti-skid soles fit both high heels or flats, a separate tie-on hood to protect hairdos and hats, a smart plastic carrying case that has separate boot compartments.

S&H Green Stamps
4/e Give and Redeem

Roberts Bros.

177 North Liberty

Your Laundry Comes Clean

Salem Laundry Co.

Phone 3-9125

253 South High Street

Salem, Ore.

CLEANING and PRESSING TOO

New Program To Feature Living Groups

"Music, the University Way," is a brand new 25-minute radio program which will go on the air for the first time Tuesday at 7:30 p.m. over KSLM.

This program will run for a 13-week period in which each of the 11 living organizations on the Willamette campus will be presented through its president and social chairman. The remaining two programs will be devoted to all-campus information.

Dave Hoss, master of ceremonies for the program, will interview the representatives, asking them questions about their organizations, how they are run, what activities they participate in, and what projects they are undertaking.

Interspersed throughout the program will be records chosen by the members of the organization represented. A ballot box will be placed in the house about eight days prior to the day of the program so members may vote on their favorite records.

"Music, the University Way," is a copyrighted feature of Phillip Doren, a University of Washington graduate. Since Doren started this program it has been successful at the University of Washington, Washington State, and it just recently has been introduced at the University of Idaho.

Beta Theta Pi will begin the series with its president, Rod Beals, and social chairman, Doug Nicoll, informing the listeners about the organization.



Bob Witham and Rollin Cocking audition available talent for the coming Varsity Varieties production. The show will be presented at the Salem high school auditorium November 17. Tickets are now on sale in Eaton hall from 8 to 12 for 50 cents. All proceeds from the show will go to Campus Chest.

Charleston, Comedy, Quartet Featured in 'Varsity Varieties'

"Varsity Varieties," a student show, will be presented November 17 at the Salem high school auditorium, announced Chairman Rollin Cocking. This year the show will be the climax to the Campus Chest as well as International week end.

According to Cocking this year's show is going to be a

straight variety show with the stress being placed on the smoothness of the performance, the spontaneous comedy, and the excellent acts.

Featured will be such acts as a Charleston, a piano duet and freshman band. Bill Bissell and Bob Witham will do a comedy pantomime and Professor Graunke and associates will present a comedy skit. These main acts will be interspersed by comedy acts.

Bob Witham and Rollin Cocking will serve as emcees. Cal Cooper and Dick Isom are in charge of the stage.

Over 100 posters have been placed downtown and promotional assemblies have been arranged at the Salem Lions club and the Salem Exchange. Last Thursday a group introduced the show at the Salem high school. All proceeds from the show go to the Campus Chest. Tickets are now on sale in Eaton from 8 to 12 for 50 cents.

Whits Re-Win Famous Axe

It's gone! Legally and for the second straight year, the famed Whitman axe is resting on the Whitman college campus after being wrenched from grasping Bearcats at the football game last Saturday. According to long-standing tradition, the huge logger's axe goes to the winner of the annual Whitman-Willamette game.

According to ASWU President Sherm Bliss, Whitman did a favor by taking the axe off Willamette's hands. The huge relic has been a constant source of expense, he said. It has been stolen various times after games, only to turn up in distant places. Once it reappeared in San Francisco, and had to be shipped back to Willamette.

While at Willamette it had occupied a place of honor in a glass case in the Bearcat cavern.

Swift Comes Through

Bob Swift is okay today after pushing his arm through a frosted-glass window in the SAE wing. It was reported that in running down the hall he accidentally pushed on the glass instead of the door frame. He suffered minor cuts on his hands. The window was a total loss.

'Campus Chatter' Radio Show To Be Aired Weekly on KOCO

The radio workshop class introduced a new 15-minute radio program entitled "Campus Chatter" Monday night at 10:15 p.m. over KOCO.

This first program featured an interview with Kent Lawrence, lead in "Night Must Fall," and also presented news of interest to the students mixed with popular recordings.

Thelma Bennett and Loren Ranton were hostesses and host for the first program, acting as script writers, directors, and announcers.

Dorothy Beachler and Bob Kaplan are in charge of next week's program and they will have Shirley Dean and Carl Blanes as their guests. They will present an act from the Varsity Varieties show.

Other members of the class who will also have a chance to take charge of the program include Earl Atkinson, Norman Battaglia, Rollin Cocking, Mar-

garet Conklin, Augusta Krause, Norman Lee, Marilyn Merz, Eric Ohlund, Tom Scheidel, and Barbara Wishred.

On November 29, a new program series will be introduced by the advanced radio students. This program, "Studio A" will also be a weekly 15-minute program and will feature short novels and plays.

Submit Papers

"All prospective teachers must finish their recommendation papers and submit them to the registrar's office as soon as possible," was the announcement coming from E. B. Jory, registrar. The clerical work involved in the preparation of credentials requires a great deal of time, he explained.

Delta Theta Phi Initiates; Pledges

Delta Theta Phi law fraternity held initiation ceremonies Thursday night at the Marion County court house and initiated the following men as active members: Donald F. Marshall, Salem; Ed Nordyke, Salem; Colbert B. Nevin, Camas, Washington; Keith D. Evans, Independence and Robert Garver, Camas.

Four men were pledged: Charles H. Reeves, Robert L. Olson, Robert Miller and Julian Herndon.

The officers of Delta Theta Phi for the coming semester are: dean, Dave Swart; vice dean, Al McMullen; clerk of exchequer, Don Marshall; tribune, Keith Evans; clerk of rolls, Lorin Ricker; master of ritual, Glenn Ramirez and bailiff, Bob Garver.

WITH A GREAT WHIRL OF SKIRT

... R&K's wonderful dress propped up by its own petticoat. In an exciting new rayon bengaline, heavy enough, almost, to stand by itself, and flashed with multi-gems. For day time and date time, in a choice of choice colors.



as advertised in Glamour

Sizes 10-16
19⁹⁵

Exclusive at

Johnson's
The Store for Ladies
Salem, Oregon

LEBOLD'S ICE CREAM

1265 State St.

Delicious Milkshakes
Sundaes - Banana Splits

30

Ice Cream Flavors
To Choose From

30

When You Think
Drugs Think

SCHAEFER'S
Drug Store

135 N. Commercial St.

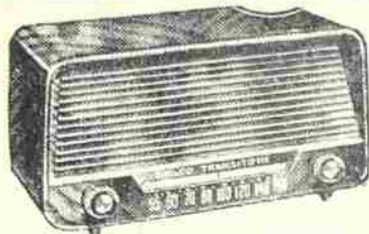
WHEN YOU THINK OF
SWEATERS

THINK OF
THE FASHIONETTE

FAMOUS JOAN MARIE TONY KNIT
BONNIE BRIER'S CASHMERE'S

THE FASHIONETTE

429 Court



Salem's
Radio & Record
Headquarters

HEIDER'S

428 Court St. and 395 N. High

Photographic Supplies
Kodak Finishing

Burke's
CAMERA SHOP
135 N. COMMERCIAL - SALEM