

# NOMINEES NAMED Election Monday

By Bob Christensen  
(See Pictures, Page 8)

Nominations for class officers were completed in class meetings Monday, and the date for the primary elections set for Monday, February 14. The run-off elections will be held the following Monday.

The polls will be open from 8:30 to 4 p.m. in Eaton hall and in the Cavern, with the Blue Key, SACs, and BAGs in charge of the polls.

### Seniors Nominate

Senior class nominees for president are Will J. Henderson and Bob Bailey, and for vice-president, Len Maurer, Bill Faminow and Harry Ryan. Barbara Miller is uncontested for secretary, and for treasurer, Mary Ellen Wilcox and Harriet Ness are running. For sergeant-at-arms Morris McElwee opposes Bob Douglas and Pat Holtz is uncontested for the office of publicity manager.

The junior class nominated for president Gordon Cline, John Kaemmer and Bud Holmes. For vice-president Robert Muhr opposes Gordon Pratt, and for secretary the nominees are Avis Roberts, Beatrice Nagl and La Fyrne Showacy. For treasurer are Nancy Whitmore and Joan Cloudy.

### Three Presidential Men

The candidates for sophomore president include Dick Endsley, Bill Hallin and Bob Skirvin. For vice-president the candidates are Keith Sperry, Gene Kerr, Colleen Whiteman, Jack Brown and Don Brand. For secretary are Janet Stark, Mary Lynne Scott, Beverly Plummer and Barbara Ann Garrett, while the candidates for treasurer are Ludene Hargrave, Chuck Robins and Allen Wilcox. Gene Peyton and Don Carpenter oppose each other for sergeant-at-arms.

The freshman class nominated for president Sherm Bliss, Don Benson and Bob Shangle. For vice-president are Genny Armstrong, Don Pritchett, Doris McCain and Harry Summers, while the opponents for secretary are Connie Bailey and Anne Miller. Al Franke and Priscilla Botkin contend for the office of treasurer and for sergeant-at-arms the candidates are Dan Montag, Louie Prediletto, Dick Brouwer and Claude Nordhill.

## National Phi Delta Prexy Visits Here

The Willamette chapter of Phi Delta Theta fraternity honored their national president Emmett Junge at a recent luncheon at the chapter house. Other guests included Oregon Governor Douglas McKay, Senate President William Walsh, Salem Alumni President Dr. Waldo Zeller and Phi Delta Theta Province President Ray Gardner.

Junge recently officiated at the installation of a new Phi Delta Theta chapter at the University of Southern California and is making a tour of all the chapters on the west coast.

While at Willamette, Junge held discussions with the local chapter on internal problems and relations with the Willamette administration. (See Picture Page 7.)



Betty Lou Thompson, Buhl, Idaho, and Lyle Parke, Salem, take two of many roles in the drama department's presentation of "R. U. R." Wednesday and Thursday nights in Waller hall. The play is presented in conjunction with Religious Emphasis Week on the campus, but is not to be classified as a religious drama, the drama department announced.

# Willamette Collegian

Vol. LX Salem, Oregon, Friday, February 11, 1949 No. 18

## Wednesday RUR to Climax Religious Emphasis Week

By Mary Louise Lee

On Wednesday and Thursday evenings, February 16 and 17, the Willamette University Players will present "R.U.R.", by Karel Capek, as a climax of Religious Emphasis Week. Curtain time will be 8:30. Admission is 65 cents for adults, 40 cents for children, and tickets can be purchased at Miller's. Student tax tickets will be sold in Eaton hall next week.

The cast of 19 includes Bill Strobbe, Patricia Holtz, Gary Lawrence, Betty Thompson, Ray Yocom, Phil Hammond, Udell J. McManus, Ray Loter, Robert Witham, Roberta Meyer, Lyle Parke, Ella Lou Ball, Robert Jewell, Maurice Underwood, Dave Beckett, George Juba, Dave Anderson, Allan Franzke and Douglas Webb.

### Workers Praised

Little praised are the behind-the-scenes workers. Director Edward T. Gibson gives bouquets to prompters Joan Morgan and

## Religious Emphasis Week Begins with Tuesday Chapel

Religious Emphasis Week will begin Tuesday at 10 a.m., when Dr. Harold Case, Methodist minister from Pasadena, California, will speak before the student body during chapel in the First Presbyterian church.

Case's topic is "Perspective," in keeping with the theme of the week, "Human Destiny." He will be introduced by Dr. Chester H. Hamblin, pastor of the First Presbyterian church. He will continue his talks on Wednesday and Thursday with the subjects, "Adventure" and "Destiny." Classes will be dismissed Wednesday at 10 o'clock for students to attend the convocation at the First Presbyterian church.

### Geist Will Sing Williams Score

Dean Melvin Geist of the music school will sing four songs from the cycle "On Wenlock Edge" by Vaughan Williams in the studio of Henri Arcand, prominent Portland pianist, Sunday afternoon. Prof. Ralph Dobbs will accompany him.

The concert is under the auspices of the Friends of New Music and will be invitational, with only those who are members of the organization invited to attend.

### Speaker



Dr. John L. Knight, former religious counselor at Willamette, will come here from Ohio to be commencement speaker in June, it was announced by the president's office last week.

## Religious Emphasis Week Schedule

### TUESDAY

- 10 a. m.—Dr. Harold Case, chapel address "Perspective," First Presbyterian church.
- 4 p. m.—Movie "God of the Atom," Waller hall chapel.
- 5:30 to 7:30 p. m.—Dinner and fireside discussions at all living organizations.

### WEDNESDAY

- 10 a. m.—Dr. Harold Case, "Adventure," First Presbyterian church. (Classes dismissed.)
- 4 p. m.—Catholic forum, music hall auditorium. Speaker, Rev. John S. Hooyboen, dean of Portland university.
- 8 p. m.—"R. U. R.," Waller hall, presented by Willamette university workshop.

### THURSDAY

- 10 a. m.—Dr. Harold Case, chapel address "Destiny," First Methodist church.
- 3:30 to 4:30 p. m.—Coffee hour in Baxter hall with Dr. Case. Faculty and students invited.
- 8 p. m.—Repeat performance of "R. U. R." in Waller hall.

Religious Emphasis Week is under the direction of the campus Inter-Faith Council and is held on other campuses at a time set by the group in charge.

### Committees Named

Westminster fellowship is in charge of publicity; the YMCA and YWCA are responsible for the Thursday afternoon coffee hour; Inter-varsity Christian fellowship, Phi Zeta Christo and Wesley fellowship have planned the firesides at the living organizations; the Catholic club is in charge of the play and the Wednesday afternoon forum; IVCF has secured the movie "God of the Atom" which will be shown in Waller hall chapel Tuesday afternoon and the speakers and services were contacted and planned for by the Canterbury club. (See social page and schedule below.)

## Civil Service Offers Tests

Civil service examinations for graduates in physical science and biology are now being offered, according to word from the civil service commission in Washington, D.C. The positions to be filled are in that city and pay from \$2,152 to \$3,727 a year.

To qualify, applicants must pass a written test and must have had appropriate college study or equivalent experience.

Detailed information may be obtained at the post office.

Participate  
Next Week  
In Religious  
Emphasis!

Sue Mellor and stage manager Bob Bennett with his stage-crew, Bob Jewell, Rex Lindemood and Duane Duff. Bouquets also to the heads of these committees and their helpers: properties, Dorothy Wood and Marion Spann; costumes, Eloise Purdy and Ray Fedje; make-up, Roberta Meyer, Mary Lee, Marylou Herndon; sound, Joe Power; promotion, Ray Loter, Jim Oakes, Mary Louise Lee, Norman Stone, Ray Yocom; tickets, Joan Baldaree and Dolores Banz, and ushers, Margaret Guice.

The set follows the floor plan of the New York production, though greatly reduced in size, due to the limited facilities of Waller hall. Designed by Carl Ritchie, the set is grey trimmed in wine, the furniture ultra-modern and simplified to the bare essentials for contrast and effectiveness of mood.

Costumes, with the exception of the robots who are specially clothed, will be in modern dress. The trunk containing the costumes arrived from Eaves in New York with no key. After much contemplation an able mechanic succeeded in opening the trunk.

The first act takes place in the central office of the factory of Rossum's Universal Robots, the second act is ten years later in Helena's drawing room, act three is the drawing room in the afternoon. The time is the future, the place is an island off the coast of Europe.

## WU Phi Alpha Chapter Gains SAE Charter

Phi Alpha fraternity has been granted a charter from the Sigma Alpha Epsilon national fraternity, according to a telegram received this week by Bob Brady, president of the local SAE alumni association. By "going national," Phi Alpha is following a precedent set by the other three Willamette fraternities which were granted national charters in the spring of 1947.

The local fraternity was formed in September, 1947, and has grown until it now has 64 members and pledges. The formal petition for a national charter was filed six months ago and was submitted to a vote from the 118 chapters of SAE. The formal installation ceremony is scheduled for some time in April.

Officers of Phi Alpha include Charles Bowe, Parkdale, president; Robert McMullen, Taft, vice-president; William Hallin, Longview, Wash., treasurer; Thomas Yates, Oakland, Calif., correspondent; Charles Robbins, Salem, recorder; Bruce Barker, Ocean Lake, pledge master and Eldrid Hutchison, Camas, Wash., house manager.

VOTE  
Next Monday

# Willamette Collegian

"In Age There is Wisdom"

Published Fridays

Official Publication of the Associated Students of Willamette University

Member Collegiate and Intercollegiate Press

Rated "All-American" 1947-48

Editorial and Business Offices

Ground Floor, Waller Hall Salem, Oregon Phone 3-3088

Entered at the Postoffice at Salem, Oregon, for transmission through the mails as second class matter. Published weekly except during examination and vacation periods. Subscription rate: \$1.50 per year. Request for national advertising by NATIONAL ADVERTISING SERVICE, INC., college publishers representatives, 420 Madison Ave., New York—Chicago—Boston—Los Angeles—San Francisco—Portland—Seattle.

MARILEE OLSON—Publications Manager

Advertising Manager—JACK BROWN Circulation Manager—JIM MILLER

ERIC BERGMAN—Editor

News Editor—EILEEN SCOTT Campus Editor—ELLEN MONTAGUE  
Sports Editor—DALE REYNOLDS Copy Editor—JOHN CONNET  
Society Editor—MARY LOUISE LEE Rewrite Ed.—EARL VAN LYDEGRAF  
Feature Editor—STAN HAWK Staff Photographer—DAVE SCOTT  
Staff Cartoonist—ED FITZSIMONS

### Staff Reporters:

Earlyne Foley, Connie Bailey, Dolores Banz, Robert Christensen, Claribelle Easton, Bob Hearn, Barbara Garrett, Mary Lou Herndon, Mary Howe, Pat Jones, Mary Louise Lee, Al Laidorf, Pat Morgan, Glenda McAllister, Patrick Paddeck, Barbara Redenbaugh, Ron Symons, Bev Tribble, Myrtle Walker, John Wenger, Phil Gallo, Mickey Newell, Ken Nerison, Dale Reynolds, Bill Bonington, Dave Card, Lowell Maudlin, John Williams, Joyce Kelly and Jerry Jewett.

(Note: All material published with by-line, signature or in editorial columns is the writer's own opinion and not necessarily the opinion of the Collegian or Willamette University.)

## Faculty for Hire in Michigan

The recent resignation of an entire faculty of the Olivet (Mich.) college brings to mind again the problem of red herring and so-called collegiate "liberalism."

The entire faculty resigned in remonstrance to the recent ousting of a member of the faculty and his librarian wife because of their "ultra liberal" views.

As in the recent case of college professors at the University of Washington, what is redness or communism and what is academic liberalism comes to the rostrum as the question of the hour. Certainly students will agree that they want to know all there is to know of red or communistic policy so that they will be able to cope with it should it confront them on the outside.

It seems to us that what is taught in college should be as near to the truth as possible without making the teaching a compulsory learning or belief.

If the college professor in Michigan was fired merely because he was trying to teach communistic views to students for their own information, his indictment is false. If he was trying to make the students believe these views for his own benefit, then the faculty resigned at their own expense.

## The Streamlined Registration

Congratulations are in order to the persons or person or whoever was responsible for the streamlined spring registration. Less fuss 'n' feathers, fewer lines, and streamlined red tape cut the recent registration and book gathering to the finest operation we've seen in these parts in months.

The idea of gathering books only on the final Monday and of having all other particulars taken care of in advance was one of the cleverest registration procedures this university has ever experienced, we do avow.

Please, Great White Fathers, let the good work go on.

## But We Can Weather the Storm

The snow is snowing . . . .

The wind is blowing . . . .

But we can weather the storm and we don't have to have our love to keep us warm either. For forty days and forty nights the cold wave has given us more than a challenge to education.

But do we fail to come to classes? Do we fail by the way-side? De we fail to take our final examinations? De we fail to register for the spring semester on time?

You're darned right we do! Do you think we want slush in our rubbers and galoshes?

## BEEFS and BOUQUETS

Dear Editor:

I would like to congratulate Willamette university for their addition of a new fraternity. In fact I am shocked!

I have become very interested in the pagan practices on the campuses, especially in the realm of race relations. Sometime before the annual conference of last year, I learned about different organizations existing on your campus that have racial discrimination in their membership eligibility.

I was not shocked to see the same situation existing at Albion College, Albion, Michigan (a Methodist college) when I was back there for the meeting of the National Conference of the Methodist Youth, but I am shocked now to hear that Willamette has added an insult to injuries.

You have now added another organization that discriminates members because of race.

Willamette is a Methodist college, supposedly a Christian college, and as such we should be

fighting prejudices, not feeding them.

I am well aware that you have the Blue Key, senior men's service honorary, on your campus which removed its "white" clause from its constitution during the December conference of last year, but let's not take credit for that.

I am not against the fraternity system; I think that it has many fine points. BUT, I am against some of the practices commonly practiced by many of these organizations. After all, the fraternity implies "Brotherhood."

I do not speak for the Methodist Student Movement of Oregon, but as an individual.

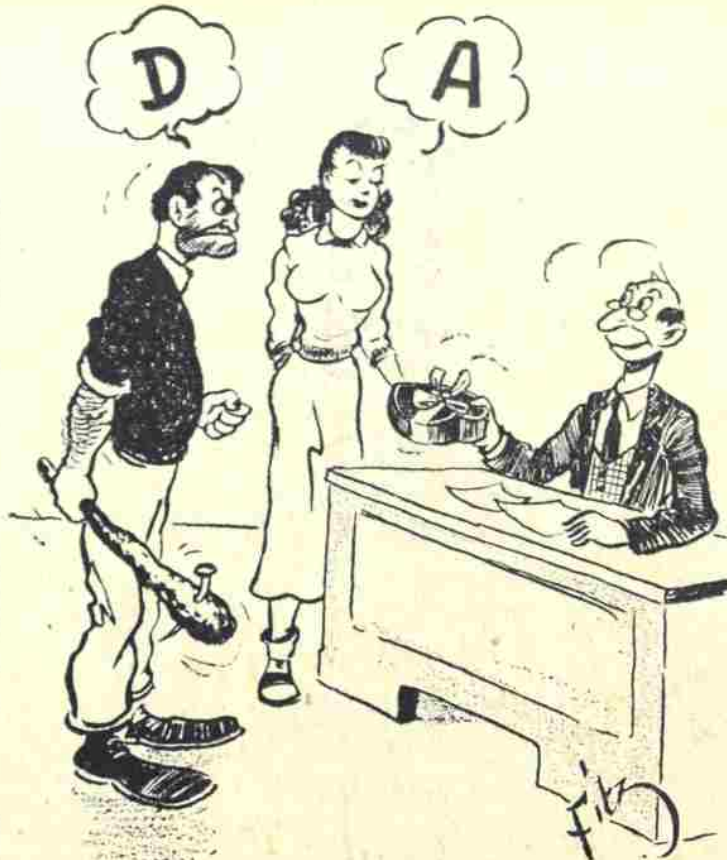
Kaz Kawata,  
President, OMSM

### KID STUFF

Two staffers had just come off second best in an argument with the editor.

First: "We've got to use psychology on that guy."

Second: "Yeah, CHILD psychology."



## COLLEGIAN

STAN HAWK, Editor

## Freak Storms? Don't Be Bitter

By Pat Sebastian

The packed snow crunched ominously underfoot as I gingerly made my way from Waller to the street. An oddly dark form which huddled in the blanketed grass drew my second glance like a magnet.

Further investigation proved the weaving crowd surrounding the crouching figure to be composed of many of the more prominent members of the curbside club who engaged in wild gestures as the center of attraction mumbled a garbled stream of oaths at weather prophets and maximum sunspot conditions.

I joined the wide-eyed crowd and finally elbowed my way to a good squinting position. Two beady eyes stared furtively in all directions from between frosted lashes, while needle-like icicles sheathed the whiskery growth on his upper lip.

"This is February, ain't it, bub?" he chattered between clenched teeth.

After looking over my shoulder to make sure that it was me he was asking, I assured him that it was.

"You darn tootin' it is!" he cackled triumphantly. "An' if it aint too much trouble, you might tell me just what this here snow is doin' here this time o' year."

"Well, you see," I stammered, "we've had freezing weather now for—"

"Ha, I thought so, you ain't got no more idea of what's goin' on than the rest of these idiots," he mumbled. As we talked, a blinding burst of sunlight brought his staring eyes to a wrinkled squint.

"Well, I never seen the like," he shouted, but his shrill voice was soon silenced by a crack of thunder followed by a stinging torrent of sleet. "I been watching the weather since Lord knows when," he screamed after regaining his breath, "and I never yet seen it like this here!"

The sleet slowly evolved into a warm, drizzling rain of the kind which Oregon is the originator, transforming the crisp snow into a lake of thick, oozing mud. Little rivers of water falling from his matted hair traced every dark wrinkle in his face. The once-bristly whiskers drooped sadly as he shrugged his pointed, narrow shoulders.

Suddenly he flung himself on his face in the warm slush. His bony, claw-like hands pounded the earth, grasped great scoops

of grass and dirt and showered it upon himself. Racking sobs rent the air as the hole he was creating in the otherwise flawless landscape grew larger and larger until it soon enveloped his entire body.

As mysteriously as he had come, he soon disappeared. A dry snow began a lazy descent.

"Oh well," I sighed as I turned and walked haltingly away. "I suppose that even a ground hog is entitled to a lost weekend now and again."

## Here We Are! What Do We Do?

Now that our advertising man has discovered that Hallowe'en is in October and that felicitations for that occasion are rarely sent on the birthday of the good St. Valentine, (see Collegian, Jan. 28), the staff is all squared away for another semester, and—believe me—we're just the squares who can do it.

Our fire-proof, 100 per cent efficient office is now only 99.44 per cent efficient, due to a slight confusion on the part of some 70 people who thought it was the bookstore Monday. It wasn't, but we now have on our desk "Methods of Heredity," "The Education of Henry Adams," a German dictionary which will probably prove very useful as a paperweight, and a modern translation of a modern translation of Chaucer.

Even if the owners never claim these impressive volumes, the royalties have passed from hand to hand and our desk has been given a decorative, if non-functional, appearance. If there were room for a typewriter we would interview the new "soc" editor, Mary Louise Lee. At the moment this person is staring at a blank dummy sheet and muttering about the discrepancy between panhellenic schedules and column inches. No doubt Schneebles will disappear again before the deadline, though. We fill up those pages somehow.

We haven't time to introduce any other new staff members at the moment, because we have an official duty to perform. After all, it isn't just any old cub reporter who gets to tear January off the calendar.

## On the SOUTHard Side

An European custom, little known in this country before 1900, has developed suddenly since that date into something which should have stayed in Europe; and furthermore, in my opinion, it has no place there or anywhere else for that matter, but we have it, and that's that.

What I'm referring to, if you haven't guessed, is tipping, that subtle and treacherous vehicle by which some people fleece John Q. U. S. without rendering any service whatsoever other than what they are—or should be—paid to do.

Now tipping has an interesting history. Before and around 1900, only the very exclusive and fashionable public places had accepted the custom. Of course these places were frequented by people with money, not poor, struggling college students, and actually no harm was done in slipping Garcon a quarter or so for some trivial task, such as opening a door in a hotel and handing over the key.

However, since 1900, the word got around what a good thing this good old European custom was. Gradually, like a cancer, with impetus added by World War I, tipping found its way into the average income bracket. Hotels and restaurants began to utilize the custom as a means of paying less to employees and depending upon the public to supplement their cut in pay. Not a bad idea if it would work.

Well, it did work, and science helped it work. With advent of the automobile, more people went here and there and spent more money. Then came the drive-ins and the carhops, generally lovelies, and who could resist leaving a little token as an expression of appreciation for the leg work of the lovelies?

There was some doubt during the depression as to whether the custom was going to die out, but unfortunately, it lived on, and finally World War II cinched the whole thing. With so much money floating around, everybody and his brother tried to get into the act. Shoeshine boys, bartenders, grease monkeys, barbers—all began hinting for their share of the easy money.

And poor old U.S.; it was up to him to fall into the trap, and he did. And here he is today. He wouldn't think of paying a sales tax of ten to fifteen cents on the dollar, but tipping that much? Why certainly! Otherwise he's a tightwad and out of order in the social scheme of things.

That brings up the question, where is all this going to lead to? Generally speaking, I can't say; but speaking for myself, it has led there and is on the way back.

To illustrate: the other night I went dining and dancing. When the waitress brought my order, she coyly remarked, "I will have to give you two quarters change", to which I replied without batting an eye, "Well, give them to me. They are just as good as a fifty-cent piece."

## Sour Grapes

"Parting is such sweet sorrow. . ."

Here is a shining example of a confused statement. It was originally intended to incite glassy eyes to thoughts of love.

Obviously, these thoughts should be reserved for the active mulling of minds in the Spring. Then again, the statement could be associated with the past final exams . . . if it weren't for that one word "sweet." This needs no further explanation.

Still another application of the term might be to wish a cadent farewell to the recently departed snow, but then again one misery seems to counter-balance another and now the rains have come with the insistence of the sunken mercury. Basically, who can think of moon, June, spoon, etc., when it's so cold the whales are drinking anti-freeze. Love, sch-move! . . . where's my coonskin?

## Philosophers Hear Phillips, Avowed Red

Interest in the Philosophy club forum on the "Nature and Extent of Academic Freedom" to be held February 27 on the campus is mounting, according to Club President Don Yocom.

A number of Willamette students traveled to Reed college in Portland, Tuesday night, to hear former Assistant Professor of Philosophy Herbert J. Phillips of the University of Washington speak in defense of the communists right to teach in this country, reported Yocom. Phillips was discharged recently from his teaching position at the university for alleged communist activities.

### Phillips Confesses

According to Yocom, Phillips confessed that he had been a communist for thirteen years, but that he did not believe in forceful overthrow of the government. Phillips believed that the communists were not in control of any section of the world today, but rather a peoples' coalition, with communist leaders, were in command.

Phillips further believed that his dismissal from the University of Washington was unjust, inasmuch as he had not violated any of the rules set forth by the university for which he could be discharged. He stressed the fact that his dismissal was brought about because of his political affiliations, which was an invasion of his rights.

Yocom said that the students from Willamette who attended the speech at Reed college did so upon their own volition and were not representing this university in any way.

## Personnel Deans Attend Portland Guidance Meet

Dean Raymond Withey, Dean Regina Ewalt and Miss Helen-Olson of Willamette university are participating in the Conference of the Northwest Council of Guidance and Personnel Associations at the Multnomah hotel in Portland which started yesterday and continues through tomorrow.

The theme of the meeting will be "Personnel Work, Time to Take Stock," and the program will include speeches by several nationally known educational leaders. Dr. E. G. Williamson, dean of students at the University of Minnesota, is scheduled to give the keynote address Friday morning. His subject will be "Over-all Responsibility of Personnel Work."

JEWELERS - OPTOMETRISTS

# Brown's

LIBERTY AND COURT STS.

Salem's Leading Credit Jewelers and Opticians

Stylish Clothes for the Smart Set

The Fashionette

1964 North Capitol In Hollywood

## ELLIOTS' BLACK & WHITE CAFE

"FINE FOODS"

Open 6 a. m. to 1 a. m. Phone 3-9168

## A Capella Choir to Serenade Legislators Today



The above picture was taken last year when the University a capella choir, led by Dean Melvin A. Geist, sang in the rotunda of the state capitol. Today at 2 o'clock the choir will serenade legislators as a part of Lincoln day ceremonies. Numbers on the program will be "Hymn to St. Stephen," by Koedly; "Soon Ah Will Be Done," a Negro spiritual, and "Skip to My Lou," arranged by Wilson.

## OFCL Announces Project To Obtain Band Contracts

By Eric Bergman

The first issue of the Oregon Federation of Collegiate Leaders Bulletin was received on the campus this week. It contained several items of prime interest to Oregon member colleges.

OFCL Secretary Russell Tripp, Willamette; President Kev Collins, Portland university, and Vice-President Art Johnson, University of Oregon, met here Saturday to begin plans for the 1949 convention, to be held at Willamette next fall.

### Name Bands Project

The bulletin mentions a most worthy project which would save member colleges money on the hiring of name bands for coming proms and organization dances. Bands which have been applied for by OFCL are the Will Osborne, Jimmie Grier, Glen Henry, Ted Fio Rito and Jimmy Zito organizations. The bulletin says that a list of available bands will be sent out to the member colleges in the near future to enable committees to vote on the order of band preference.

### Transportation Less Costly

"Underlying reason for the share-the-band program," says the bulletin, "is the price reduction available due to the ability of bands to cut down on their highest overhead—transportation. If your college is planning a prom or dance in that two-week period, (namely the last week of April and the first week of May) contact Kev Collins at the University of Portland and kindly include the date on which you plan to hold your function." (Attention, May Weekend manager.)

Another interesting item in the bulletin tells of the student poll taken in six Portland colleges which shows that movie attendance in local downtown movie houses has dropped considerably in the past two years. "Reason," says the bulletin, "is the higher price of admission."

## New Course Opens In Social Case Work

A new course in social case work open to outsiders as well as regular students will start Monday. The instructor will be Elizabeth Lewton, chief social worker of the Portland child guidance clinic.

Registration will take place at the first session Monday night at 7 in the University library seminar room. The tuition for special students is \$15 per credit hour with three credits offered for the lecture course and up to three credits for the field work.

## FILMS

DEVELOPING  
PRINTING  
ENLARGING

On the Campus at Willamette Bookstore

## Salem Rotary Club Presents Benefit Recital

The Salem Rotary Club concert, produced as a benefit program wherein the proceeds are utilized for a scholarship to be given annually to a Willamette student, will be presented Tuesday, February 15, in the Salem high school auditorium. The program will be composed of musical selections by the Portland men's clee club under the direction of John Stark Evans with George Bishop, tenor, as soloist and Richards Davies and Lawrence Pratt, as accompanists.

### Varied Program

The varied program will include some twenty selections with compositions ranging in style from those of Tchaikowski and Brahms to those of Jerome Kern and George Gershwin.

Mr. Evans, the director, was for a time, music director at the University of Oregon and was the originator and conductor of the Eugene glee club prior to moving to Portland where he is now leader of the Lewis and Clark music department. The chairman of the Salem Rotary club, the backing organization, is Mayor R. L. Elfstrom. He is also a member of the Willamette university board of trustees.

### Tickets Available

Tickets are available on the campus and in town at 76c for Willamette students and \$1.20 for non-students. These tickets may be procured at the Maple Sporting Goods, the Commercial Book Store or from Dean Geist or his representatives here on the campus.

## WU Legal Forum Probes Tax Needs Thursday

The Willamette university legislative forum presented Thursday the second in a series of weekly broadcasts by the law school. The subject under discussion was "What New State Taxes Can Be Expected."

Guest speakers were Senator Dean Walker of Independence, Representative Ralph Moore of Coos Bay, and Senator Richard Neuberger of Portland.

## Sweethearts to Sign

All Willamette sweethearts who would like to win a Valentine of chocolates are urged by the 'Cat manager to sign today under the number on the red and white heart now posted in the Bearcat Cavern.

The drawing will be made Monday, February 14, by George Hurt, ASWU president, and the names of the winning couple will be announced in the next issue of the Collegian.

## Philosophy Club To Hold Religion Question Debate

The Willamette Philosophical society will hold its regular meeting Sunday, February 13, at 8 p.m. in the parlor of the Chi Omega sorority house, 245 North 17th street.

R. J. Portal, graduate student at Willamette university, will present one viewpoint concerning the question "Is Religion Necessary?" A second, and, from all indications, different attitude, will be voiced by Udell McManus, Willamette senior.

The discussion concerning the question "Is Religion Necessary?" will be informal. Don Yocom, president of the society, will preside as mediator, and the discussion will be open at all times to those present.

## Whites Lunch and Drive In

1138 So. Commercial  
Phone 3-3267 or 2-1495

## LES NEWMAN'S

The Friendly Store

Men's Furnishings, Work Clothing, Shoes and Luggage  
Military Supplies

Phone 3-5508 179 N. Commercial St., Salem, Ore.

## Salem Laundry Co.

(WIEDER'S)

263 South High Street

LAUNDRY DRY CLEANING SERVICE

PHONE 3-9125

# Cats Face Coyotes, Whitman on Inland Trek Saturday, Monday

Johnny Lewis' basketball team will journey inland for their next pair of games as they meet the College of Idaho at Caldwell Saturday night and Whitman at Walla Walla Monday night.

This will be the Bearcats first trip inland and their initial games with Whitman and College of Idaho this season. Both the Coyotes and Missionaries are tied for third place in the Northwest conference standing with 2-3 records,

while the locals are pressing the pace-setting Lewis and Clark Pioneers from a close second spot.

On the inland trip the Cats will be weakened by the loss of Dick Allison, Don Aason and Reg Waters, who have dropped for various reasons.

### Coyotes Highly Regarded

The Coyotes, coached by Clem Parberry, an ex-College of Idaho great, are highly regarded in Northwest circles because of their

60-57 loss to the league leading Lewis and Clark five. This score in comparison with Willamette's 65-56 loss to the Pioneers gives the Coyotes a slight edge.

Parberry sports a roster studded with seven lettermen. Last season the Coyotes landed a fifth place, but they were co-champs in the '46 season. Their main offense rests in Lowell Sayre, a clever, high-scoring forward, and Rex Adamson, scrappy guard.

### Cats End Jaunt With Whits

The last leg of the inland jaunt will take the Bearcats to Whitman. The Missionaries recently bested Pacific university, a team which has turned "red hot" recently. Whitman beat the College of Idaho quintet and therefore is listed as anything but push-overs for the Cats. They also sport an early season win over the University of Idaho, the scrappy squad which recently topped Oregon State in a Coast conference affair.

"Lindy" Lindeberg's Missionaries are shooting for their first title since '38 before which they and Willamette completely dominated league standings for 12 years running.

### Missionaries Paced by Stars

The Walla Walla crew is paced by a host of stars led by Jack Heron, a high scorer from the forward post, Jim Mitchell who teams with him from the other side, and "Starch" Garrett, a 6 foot 4 inch pivot man.

Following Monday's game Willamette will have four important conference games remaining before finishing the season. The games will be return engagements with College of Idaho, Whitman, Pacific and Lewis and Clark.

## HOW THEY'RE SHOOTIN'

	FG	FTA	FT	Pct.	PF	TP
B. Johnson, f	83	90	63	.700	30	229
J. Johnson, c	82	58	44	.759	31	208
Loder, f	61	78	57	.730	41	179
T. Johnson, g	23	42	24	.571	33	70
Brouwer, f	21	29	20	.689	16	62
Warren, g	22	11	9	.818	25	53
Logue, c	17	30	19	.633	24	53
Scrivens, g	19	22	14	.636	22	52
Waters, f	19	8	5	.625	18	43
Barker, g	13	14	7	.500	15	33
Fedje, c	8	20	13	.650	13	29
Allison, f	3	12	8	.666	11	14
Baum, f	5	2	1	.500	2	11
Bryant, g	1	6	3	.500	4	5

## Bearkittens Travel South For Three-game Weekend

This weekend is the high-light of the current season for the 1948-49 version of the Bearkittens, as they are now on a barnstorming trip throughout the state. Four straight games away from home are on the menu for the Frosh before they perform in the home arena once again.

Last night in Grants Pass the Bearkittens met a powerful

Caveman squad, boasting a record of 8-6 and led by speedy little guard Doug Talbot and Vernon Craft.

Tonight at Klamath Falls, the Frosh come up against one of the toughest teams in the state when they tangle with the Southern Oregon Conference Pelicans. The southerners, led by flashy Gary Dawes, 6' 1", at forward and Jack Lust, also 6' 1", at center, have run roughshod over some of the state biggies, losing only two games, one to Roseburg.

Tomorrow night the Lilliemen travel northward to Redmond to take on the so-so eastern Oregon squad. This scramble is expected to be the easiest of the trip as Redmond hasn't shown much so far this year.

Next Tuesday, February 15, the Bearkittens travel south to Lebanon to challenge the Warriors for the second time. Lebanon played in the Willamette gym in a preliminary to the Bearcat-OSC mix last month and suffered their first defeat, 42-30, at the hands of the Bearkittens.

Two of the Froshcats' leading stars, Waldo Unruh and Dave Chamberlain, were left home because of recent scholastic difficulties. The loss of these men will undoubtedly weaken the Lilliemen.

The probable starting line-up for the Frosh on their tour will be Jack Miller and Claude Nordhill at forwards, Chuck Robinson in the center slot, and Hugh Belinger and George Matile, guards.

## Ski Clubbers Trek to Hood

Because of a slide which blocked the road to Hoodoo Bowl, the ski club had to alter their plans and go to Mount Hood for a weekend of the slalom sport. The Willamette University and the Santiam Ski clubs combined to organize a party of 35 skiers.

Except for an early morning snow storm, the weather conditions at Hood were termed excellent. On the return trip the skiers, after a successful day, were delayed for about an hour while waiting for a traffic jam to be cleared. Although a few skiers complained of the usual pains and sprains, it was deemed a weekend well spent.

The plans for another trip are still indefinite, and the club is making an effort to form a ski team. Membership is still open to those who wish to participate in future trips and ski team activities. Yearly dues are set at \$1.

# Collegian Sports

DALE REYNOLDS, Editor

### Northwest Conference Standings

	W	L	Pct.	PF	PA
Lewis and Clark	5	1	.833	330	314
Willamette	3	1	.750	241	201
Whitman	2	3	.400	255	252
College of Idaho	2	3	.400	258	261
Pacific	3	5	.375	263	394
Linfield	1	3	.250	180	205

#### NEXT WEEK'S GAMES

Linfield at Whitman.  
Willamette at Col. of Idaho.  
Linfield at Col. of Idaho.  
Willamette at Whitman.

#### LAST WEEK'S GAMES

Lewis and Clark 63, Whitman 57.  
Whitman 45, Pacific 38.  
Lewis and Clark, 60, College of Idaho 57.  
Pacific 56, College of Idaho 41.  
Pacific 58, Linfield 39.  
Willamette 60, Linfield 52.

## Bearcats Win Two, Lose One, Hold Second Conference Spot

Willamette University's basketball team won two of its last three games, but that one loss, a 65-28 walloping at the hands of the Portland Pilots, was the worst suffered by the Bearcats this year. In winning the other two, Willamette gained a Northwest Conference victory over Linfield, by a 60-52 count, and a fast 88-66 triumph over Eastern Oregon College of Education.

The Portland game saw coach Jim "Mush" Torson's crew take the lead right from the start, and go on to hand the Bearcats the amazing defeat. With eight minutes gone the home-town Pilots had built up a 20-5 advantage which they stretched to 36-17 at the half-way mark.

### Willamette Scoreless

Willamette was unable to make any comeback during the second half, and during one part of the last period Portland piled up 12 points while holding the Cats scoreless.

One of the biggest factors in the Pilot victory was their virtually complete control of the backboards, with Hal Holden,

Ray Foleen and Jackson Winters leading the way in this department. Holden gained high point honors with 20 counters while little "Happy" Lee, sparkplug in Portland's first win over Willamette, gained the runner-up crown with 15 points.

The ineffectiveness of the Bearcat attack was shown by the fact that Ted Loder's six points was good enough for high score honors for the locals.

### Linfield Game Thriller

The Linfield encounter was featured by the sharp-shooting of Loder and Bob Johnson who sparked the Bearcats to an early 25-6 margin. Following a brief Wildcat spurt, Willamette went on to hold a 32-18 lead at half-time.

Things were different in the second half, however, with substitute Al Newman sparking a Linfield rally that tied the game at 47-47 with nine minutes left to go. The score was tied again at 49-all, and for a brief moment Linfield held a 51-50 lead. Newman fouled out at this point, however, and Willamette re-gathered its composure and went on to win.

### Bob Johnson, Loder Shine

Bob Johnson's 21 points was high for the night, while Loder's 16 was second. Newman, with 13, garnered scoring honors for the losers.

The Willamette-EOCE mix started out as if it might be very close, with the Mountaineers at one time holding a 20-14 lead, thanks to the spectacular shooting of guard Bob Green. Coach John Lewis' charges, however, started a swift scoring pace and pulled out in front 38-30 at half-

time.  
EOCE (66) (88) Willamette  
Coleman 8 F 12 B. Johnson  
Lilly 11 F 16 Loder  
Taylor 7 C 18 J. Johnson  
Noland 9 G 2 Warren  
Green 18 G 14 T. Johnson  
Subs: EOCE—Sektanan 10, K. Johnson 3, Merriman, and Irons; Willamette—Logue 6, Brouwer 6, Barker 4, Waters 2, Scrivens, Allison 3, Bryant 1, Baum, Aasen 2, and Fedje 2.  
Willamette (60) (52) Linfield  
B. Johnson 21 F Gassaway  
Loder 16 F 8 O. Johnson  
J. Johnson 7 C 8 Abrahamson  
Warren 4 G 9 Hammond  
T. Johnson 12 G 6 Williams  
Subs: Willamette—Scrivens and Allison; Linfield—Dowd, Newman 13, Grimberg 8, Montgomery, and Bruce.  
Willamette (28) (65) Portland  
B. Johnson 3 F 7 Foleen  
Loder 6 F 20 Holden  
J. Johnson 3 C 6 Winters  
Warren 4 G 12 Grosjacques  
T. Johnson 2 G 15 Lee  
Subs: Willamette—Baum, Brouwer 5, Logue 3, Fedje, Barker 4, Bryant, Scrivens 2, and Osuna; Portland—Jolley, Devich 5, Turina, Petros, Wridge, and Pautain.

## 'B' Mural Basketball Title Playoff Feb. 19

The long-awaited title playoff in the "B" division of the intramural basketball league will take place in the Willamette gym on Saturday, February 19.

As things stack up now the competing teams will be the Phi Alpha Co's, the Beta B's, the Baxter B's, and the Hot Shots.

In the afternoon games, the morning's two losers will meet in the first contest, and the two morning winners will meet in the first contest, and the two morning winners will meet in the second to determine the champion.

**"ACE" FISH, the Barber**  
1256 Skate Street

For His VALENTINE  
**Lord Jeff SWEATER**  
\$5.95 to \$18.50  
**ALEX JONES**  
121 North High Street

Open Every Day 8:30 to 12—Open All Night on Friday and Saturday  
London's Candies - Beverages - Cigarettes - Magazines  
**MAR'S DESSERT LUNCH**  
BREAKFAST - LUNCH - DINNER  
Phone 2-5434

**Stop Lite Coffee Shop**  
- Our Special -  
Golden Fried Chicken 95c  
Dinner, Anytime  
Delicious Tenderloin \$1.20  
Steak  
OPEN 6 A.M. to 1 A.M.  
Telephone 2-9342 - Saturday All Nite, Sunday 'til 1 A.M.  
South of 12th St. Junction on 99-E

FOR VALENTINE'S DAY  
Come In and See Our Large Assortment of Valentines  
**COMMERCIAL BOOK STORE**  
141 North Commercial Phone 4534

### Mural Basketball Champs



By virtue of their 21-17 victory over the Rubes, defending champions, the Phi Alpha mural basketball team copped the 1948-49 mural "A" title. Pictured above, from left to right, are Bob Douglas, Chuck Bowe, Olwyn Davies, Bob Lakie and Al Miles of the winners.

### Phi Alpha 'A' Whips Rubes Win Intermural Cage Toga

By Lowell Maudlin

The power-laden Phi Alpha "A" intramural basketball team put the finishing touches to an undefeated season and won the league championship by dumping the Rubes 21-17 in a tight, well-played varsity prelim January 27. The Phi Alphas, in capturing the crown from the rest of the field, put an end to the reign of the Rubes, last year's winners.

With just three minutes to go in this championship battle, the score was tied at 16-all. At this point the Phi Alphas displayed the talent that made them the cream of the crop; they controlled the ball and took only set-up shots, scoring two quick baskets and a free throw while holding the Rubes to a single gift toss.

The sparkling play of guard Bob Douglas and center Fabian Nelson for the Phi Alphas was one of the decisive factors in the Phi Alphas' victory. Douglas canned 10 points, and Nelson controlled the backboards well while accounting for six tallies. For the losers, the Fitzsimons brothers led the way, Ed getting eight counters, and Mo six.

The Rubes stayed in the game most of the way due to their phe-

nomenal percentage from the free throw line. The losers dropped seven out of 10 attempts, while the Phi Alphas could only convert seven of 15 chances.

### Kits Boost Mark to 13-2 Tally With 2 Wins, Loss to OSC Rooks

It was high, low, jack, and almost a game for the Frosh cage crew as they won two and lost one over the mid-year holiday, stretching their win and loss record to 13-2. They defeated the Linfield Freshmen 62-38, dropped the Portland Frosh, 39-35, and lost a heart breaker to the OSC Rooks, 43-41.

Friday night of last week the Frosh trumped every trick as they walloped the Linfield Freshmen, 62-38, on the home floor of the Wildkits. Chuck Robinson led the Frosh attack with 11 counters, while Hugh and Al Bellinger came close behind with 9 each. The big gun of the evening was Don Bruce with 17 for Linfield.

On Saturday night the Bearkits moved down to Corvallis and almost came home with the Baby Beaver skin, losing to the Rooks, 41-43. Jack Miller opened the scoring for the Frosh with a free toss, but at halftime the Rooks were on the long end of a 21-16 score.

With Waldo Unruh and Dave Chamberlain leading the way with 12 and 10 points respectively, the Frosh began chopping the Rook lead. With but a few minutes to go, the OSC Frosh were ahead 39-37, but Allison dropped in a field goal to tie the score, and then he canned two more to put the Rooks out ahead to stay.

It was "sweet revenge" in the Portland game as the Frosh won easily 39-35. At the end of the first half the Froshcats held a

### Play Opens In Volleyball

Intramural volleyball got away to a good start last Wednesday evening with four of the 14 teams entered posting first round victories. Intramural Director Les Sparks indicated that the number of teams would increase still further by the end of the next week, possibly to 17 or 18.

The Rubes, as they did in basketball, showed strong possibilities of being title contenders in topping the Phi Alphas in two straight games 15-4, 15-6.

The Phi Deltas had to squeeze to get past Baxter hall, but they came through with victories in the first and third games to open their season with one battle to their credit. The winners took the first game 15-9, lost the second by a wide margin to a fired-up Baxter hall club 3-15, then came back in the third game to win 15-6.

The Betas, in romping over Laurel hall in two straight tilts 15-5, 15-4, also showed definite championship possibilities.

In the fourth game of the evening, the Band forfeited to the Sigs 15-0.

comfortable 24-10 lead. Hugh Bellinger led all scorers with 10 points. "Skooter" Skuzeski, the fellow who contributed 21 points to Portland's earlier defeat of the Frosh, was held to 5 in Tuesday's game at Portland.

#### SPORTS CALENDAR

- Varsity**  
 February 12—  
 Willamette vs. College of Idaho, there, 8 p. m.  
 February 14—  
 Willamette vs. Whitman, there, 8 p. m.  
**Frosh**  
 Today—  
 Willamette vs. Klamath Falls, there 8 p. m.  
 February 12—  
 Willamette vs. Redmond, there, 8 p. m.  
 February 15—  
 Willamette vs. Lebanon, there, 8 p. m.  
**Volleyball**  
 February 14—  
 Law School vs. Independents, court 1, 7:30 p. m.  
 Phi Alpha vs. Phi Delt, court 2, 7:30 p. m.  
 Rubes vs. Baxter, court 1, 8:30 p. m.  
 Betas vs. Law School, court 2, 8:30 p. m.  
 February 15—  
 Laurel vs. Sigma Chi, court 1, 7:30 p. m.  
 Band vs. Independents, court 2, 7:30 p. m.  
 Phi Alpha vs. Baxter, court 1, 8:30 p. m.  
 Rubes vs. Laurel, court 2, 8:30 p. m.

#### FROSH SCORING

Unruh	103
Nordhill	94
Ribinson	88
Chamberlain	66
Miller	56
Matile	46
H. Bellinger	39
Montag	21
A. Bellinger	10
Girod	9
Lenz	8
Crandall	5
Glenn	3
Southworth	3
Coen	2
Bissell	1

Note: Statistics not available for St. Helens game.

# Cat Chats

## By Dale Reynolds

Sad days are ~~are~~ everyone and no doubt Coach Johnny Lewis had his last Wednesday after seeing his Cats drubbed 65-28 Tuesday night. It was definitely one of those nights when the Pilots were "red hot" and the Bearcats, including the "Johnson Act" which tallied only eight points among them, were completely off. Regardless of the exceptionally poor showing against the Pilots, we will venture to say that the Cats will be in the running on their inland tour to Whitman and College of Idaho.

#### Lillie Interviewed By Montana

As the last edition of the Collegian came off of the press the daily papers broke a story on Jerry Lillie going to Montana university to see about an athletic director position. The Collegian was slighted on the story because it broke too late for publication.

To clarify the facts, Lillie was never offered a Montana position, but in reality he was given an invitation to go to Montana (way paid) for an interview. The job was given to a Denver university man who had a long record of experience. So from all indications Willamette will be able to retain Lillie.

#### Jayvees to Get Sweaters

For many years Willamette has maintained Jayvee sports teams, but previously the university has failed to give any recognition to the future Bearcat varsity material. However, sweaters for this season's Jayvee gridiron men have been ordered and will probably be presented during the halftime of one of the basketball games on the home floor. We feel that this recognition has been earned by the Jayvees and think it will be a long step toward better Bearcat teams in future years.

#### Oakes Due Credit

"Give credit where it is due." That trite old statement can be applied to the credit due Jim Oakes, the retiring Collegian sports editor. Jim had little worry about where to spend his Tuesday and Wednesday evenings. He spends these evenings and until "wee hours" of the morning working on the Collegian.

But we feel that Jim's toil has not been in vain since the students' comments which we have heard have been of admiration of the sports editing. From the inside we have noted that Jim vastly improved the organization of the sports staff. Our praise of Jim at this time is in no manner an attempt to apologize for the high standards set by Jim which the new staff will have to meet, but rather is an attempt to "give credit where it is due."

#### NAIB Tourney Possibilities Grow

The probability of a tournament to decide the team to represent this district in the National Association of Intercollegiate Basketball tourney at Kansas City March 7-12 is growing by leaps and bounds. According to Jerry Lillie, district chairman of the NAIB, the tourney will probably be held in Portland. Willamette had a good chance of getting the tourney played here, but the date proposed, March 1-2, conflicted with Freshman Glee.

It will be a single elimination tourney made up of the top two Northwest Conference teams, Portland, the exceptionally strong independent team, and one of the colleges of education.

Since Willamette is now riding to a close second spot in the conference and the two Northwest teams tied for third are not members of this NAIB district, the Bearcats are definitely in the bidding for a tourney berth.

Early this week the Bearcat gridsters were presented a trophy as a token of appreciation for their participation in the first annual Potato Bowl game with Santa Barbara college. The trophy was a regulation-sized gold football mounted on a plastic base.

### Co-Ed Swimming

at the  
YMCA

Fridays 8-10

685 Court St. Phone 3-9117

### Fred Reidy

76 Gas

Stop Wear  
Lubrication

UNION SERVICE STATION  
13th and State

### SAVE TIME!

RIDE A BIKE  
HARRY W. SCOTT  
147 S. Commercial

### TOP HAT RESTAURANT & ICE CREAM PARLOR



Open 7 A.M. - 11 P.M.  
TASTY ICE CREAM—FINE FOOD  
1275 State Street—Salem, Oregon

### SUNDIN & SEIME

Custom Tailors to  
Men and Women

Alterations and Repairs

196 So. Liberty St.  
Salem, Oregon



### Let's Go Roller Skating

Mon. - Wed. - Fri.  
Saturday Nights

and Sunday Afternoon  
Special Rates for Parties  
Arrange Party Dates Now - Call 2-9066

### CAPITOLA ROLLER RINK

90 Lana Ave — Take Capitola Bus

# WILLAMETTE

*Social Whirl*

MARY LOUISE LEE, Editor

## Firesides Planned for Religious Emphasis Week

Religious leaders from nearby cities will meet for dinner followed by a fireside with members of the eleven living organizations on the campus, Tuesday, February 15. The firesides, a special feature of Religious Emphasis Week, are an attempt to bring closer to the students the personal need of a religion, and to help solve some of the religious problems facing the college student of today. The speakers, outstanding men in their particular denominations, will talk around the general theme, "Human Destiny," with questions and discussion periods following.

Speaking to the Alpha Chi Omega's will be Reverend Myron Cole, minister of the First Christian church, Portland. Professor John Schroeder, chaplain of Linfield college, McMinnville, will meet for discussion with the Chi Omega's.

### Houses Have Speakers

The Delta Gamma's will entertain Reverend Allan B. Philip, minister of the First Methodist church, Forest Grove, who will speak at the Pi Beta Phi house. Frederickson hall will entertain Reverend Elton T. Smith, minister of the First Baptist church, McMinnville. Reverend Brooks H. Moore, minister of the

First Methodist church, Salem, will discuss problems of religion with women of Lausanne hall.

Speaking to combined Baxter and Laurel halls will be Dr. Harold Case, minister of the First Methodist church, Pasadena, California. Beta Theta Pi will meet with Dr. Raymond B. Walker, First Congregational church, Portland.

Coming from Portland to speak to Phi Delta Theta is Dr. Lawrence Nye, minister of the First Methodist church. Dr. Norman Huffman, head of the religion department at Willamette, will be entertained at the Sigma Alpha Epsilon house. Speaking to the Sigma Chi's will be Reverend H. W. Hebblethwaite, minister of the Fremont Methodist church, Portland.

### Religious Groups Active

Representatives of the campus religious organizations comprised the Inter-Faith Council, which invited the speakers, and planned the activities throughout the week. Jeanne duBuy, Jim Purdy and Jerry Jewett, representing Phi Zeta Christo, Wesley Fellowship, and Inter-Varsity Christian Fellowship respectively, are in charge of arranging the firesides.

## Pi Beta Phi Valentine Formal

Those prized "Three Little Words" will create theme and atmosphere for the annual Pi Beta Phi Valentine formal at the chapter house from 8:30 to 11:30 tomorrow evening.

Stepping through a door-sized lacy Valentine, couples will enter into the setting of hearts and cupids. Large red hearts with white streams will form a false ceiling in the dining room from which will hang hearts with the names of the couples on them. Cupids constructed from balloons will adorn the rooms. Valentine decorations have been planned by Diane Proctor and Shirley Hansen.

Red heart programs with smaller gold and red hearts with the couple's names have been designed by Sally Smith and Janet Stark. Music of records has been arranged by Margie Guice. Other chairmen under Barbara MacDuffee, general chairman, are Helen Oakes, guestbook; Nickie Haynes, refreshments; Kay Stark, servers, and Maxine Muckle, clean-up.

Chaperones, Mrs. Paul Weyrauch and Mr. and Mrs. Alan Patton, have been invited by Geri Bowles.



Newly elected presidents of Pi Beta Phi and Delta Gamma are Avis Roberts and Inie Lou Wilhelm, respectively. Both were elected in early January.

## Sorority Rushing Comes to Early Close As 12 Coeds Receive Formal Bids

Because of the small number of women who turned out for Spring rush, formal rushing by the sororities was ended Wednesday night instead of going on with the preferential dinner on Thursday night as has been the custom in the past. This decision was made by the Panhellenic council Tuesday night when they decided that it was unnecessary to carry on the functions another day.

Twelve women receiving formal bids Wednesday night were, Alpha Chi Omega, Lois Urban and Frances Otto; Chi Omega, La Vonne Skirvin, Nancy Westcott and Sarah Humble; Delta Gamma, Pat Stanton, Maria Puckett, Lucy Collins; Pi Beta Phi, Jean Kell, Diane McLaughlin, Mary Louise Lee and Joan Haberle.

### Themes for Rush Functions

Tuesday afternoon the rushees were guests at open house. At the Delta Gamma house the rushees were ushered aboard the D.G. "Showboat" with a complete tour of the "boat" given them. Open house at the Chi Omega was called "Chi-O-Tel," with potted palms, bell boys and luggage characteristic of the modern hotel. As the girls entered the Alpha Chi Omega house they met with the theme of "Campus Belle" with various campus scenes centered around the "little red school house."

Tuesday and Wednesday eve-

ning the rushees were entertained with firesides using the same themes both nights. The Chi Omega house was transferred into "Hobo Haven." Beth Tedford and Marian Spann, appropriately dressed, provided entertainment for the evening. Refreshments were presented to the girls in small knapsacks. The typical western inn found over at the A Chi O house was called "Hurry On Inn." The DG's "Ski Inn" was a typical lodge with necessary skiing equipment providing atmosphere. Radio Station PIFI was located at the Pi Phi house where the girls witnessed

the station in action. Nicky Haynes was master of ceremonies. Martha Benard gave a singing commercial followed by Shirley Weist, Mary Jo Wigginton, Dona Adams, Barbara Miller and Lu Dene Hargrave in a short skit.

## Delta Gammas Redecorate With Striking Results

Occupants of the Delta Gamma house got a jump on Spring this week by blossoming out with cheery new couch covers and draperies and newly painted dressing room walls.

Several rooms were done in a modernistic fashion with three walls of one color and the fourth a contrasting color. Commented one visitor when she discovered the room with three light chartreuse walls and one dark green with bright green, red and white striped couch cover, "Well, it's different!"

One of the rooms has been redecorated with warm yellow walls, tan couch cover, green and white striped cushions and window trimmings. Supplementing the calm walls are several striking abstract designs.

All at the DG house are pleased with the ambition of their members in re-decorating so soon after strenuous finals.

## Chinese Theme Featured for Wesley Dinner

A thoroughly Oriental atmosphere will be created next Friday evening at the Chinese dinner given by Wesley Fellowship in the dining room of the First Methodist church. Tickets may be obtained following church service Sunday or from Earl Fedje or from ticket salesmen in the dorms for \$1 per plate.

On entering the dining room, guests will be greeted by waitresses dressed in Chinese garb and taken into the room which will resemble a Chinese garden, according to Sophia Guyton, general chairman for the affair. The dinner of pork and veal chow mein, orange slices, tea and almond cakes will be on the table so that whenever guests arrive they may be seated and proceed to eat without having to wait to be served. People may be served anytime from 5:30 until 7:30.

### Chinese Music Featured

Throughout the evening Chinese music will be played in the background. Special numbers, including piano, violin and vocal solos and pantomime, are planned to take place at regular intervals during the meal.

Those in charge of food are Doris Gragg, Dottie Libby and Mutsu Wada. Stan Aschenbrenner is in charge of publicity, Earl Fedje is responsible for ticket sales, Phil Phipps, decorations.

## Hall Elects New Officers

Helen Larson, senior major in P.E., was reelected president of Lausanne hall for spring semester in a recent election.

Other officers elected are Shirley Allen, vice president; Marjorie Aldinger, social chairman; Mary Ann Hall, secretary; Margaret Fisher, treasurer; Doris McCain, song leader; Betty Karmos, historian; and Jo Oliver, reporter. Chosen to represent their sections in house council are Arlene Deakens, Ann Cortel, Ann Leslie, Elaine Wallis, Francie Linton, Mary Howe and Muriel Roberts.

**NEWS**  
**ENTERTAINMENT**  
**MUSIC**  
**DRAMA**  
**& SPECIAL FEATURES**

Your WESTINGHOUSE STATION

**KEX**  
PORTLAND

6:00 A.M. to 1:00 A.M.  
19 HOURS DAILY (Sunday 18 Hours)

Always DIAL **1190**  
50,000 WATTS

If you care enough to send the very best... a

*Hallmark Valentine*

is the one for you

We Feature HALLMARK CARDS EDWARD WILLIAMS 330 Court

New home of...  
**Stevens & Son**  
JEWELERS and SILVERSMITHS  
STATE AT LIBERTY

## When Are We Going to Wake Up?

(Editor's note: The following article written by James Miller has been divided into two parts for publication purposes. The first part published below is of the author's opinion and published as editorial comment only. A continuation and conclusion will be published next week.)

By JAMES MILLER

This article neither represents a radical purge on the part of any Purity League, nor an organized plan of action. Rather, it is intended to act as a refresher for the slumbering R. V. Winkles in our extant society. I refer, mainly, to the lack of social ideals or goals in our presentation of present-day society to the youth of our United States.

To begin with, I would like to point an accusing finger at Hollywood, California. This is by no means the first accusation made toward this metropolis. To begin with, in keeping with good journalistic policy, I feel it only fair to give credit where credit is due. Obviously, the movie industry in a great many endeavors of progression has proven invaluable in furthering good will and bettering the field of entertainment.

Also, the many phases of technical skill which it has fostered are innumerable. To be sure, the industry as an industry is invaluable to our American way of life. However, to cite a detracting case, the local newspapers were recently reeking with news of one actor's (idol of millions of bobby-soxers) trial proceedings. Also, this actor was defended by one of the shrewdest criminal lawyers that money can buy . . . and you know, or should know, where the money was coming from to support this trial. It's not my intention to single out this particular case for there can be no definite singling when it comes to bringing out the filth and utter iniquity that exists in this industry.

The tragic part of the story is that these wrongs don't affect the individual singularly . . . in this particular case. If the man on trial were Joe the Butcher, Harry the Cobbler, or possibly Andy the Groceryman it probably wouldn't make much difference what happened to them for they would be just another person who is guilty and deserving of punishment. Now then, if one of these fictitious characters were on trial for the same offense or an equivalent one, how much chance do you think they'd have of an acquittal? Not much; and why? Because they probably couldn't afford to pay off a certain clique of organized criminals—and I use the term "criminals" for lack of anything more lenient . . . they don't deserve leniency.

Are we to believe that the American public is composed of a group of suckers? This certainly hasn't been my opinion up to this point. How long are the mothers and fathers of growing children going to allow them to idolize parasites of the movies . . . and they are nothing more. One is convicted of being a dope addict; another of continual drunkenness; others bring illegitimate children to court trying to prove the legality of the father; still another is involved in a "choice" scandal and commits suicide; every case of which is right in the public's

lap for we know these people. We see them on the screen and they make us cry or we are held transfixed in our seats as they run through dramatic portions of a particularly interesting movie or they make us laugh . . . I've often wondered if they are laughing with us or at us.

I'd probably take all these feelings for their face value and let them slide by because I didn't know any more about them than what I read in the newspapers, but it just happens that this isn't the case. The scum isn't concentrated on the surface of the motion picture industry. It goes all the way down the chain of command to the lowliest bit player. Having been stationed in Long Beach, California, for some time while in the service, I had the "pleasure" of seeing the "Picture City" any number of times. Letters from home would barrage me with questions of "What was it like?" and "Are the stars as wonderful in person as on the screen?" What a laugh—but you can't write home about the events that you really were brought face to face with. I might have cited cases such as "heroes of the screen" being involved in drunken brawls in some of the "better" night spots of Hollywood and Los Angeles, or some of the more "petite" actresses parked on bar stools for a vigil of any length of time, waiting to be picked up, or I might even have gone further and cited the innumerable cases of sexual perverts that find their niche in this brand of society. Is this the group that the American public spends a fortune on each year, paying tribute to their pictorial handiwork?

(Continued next week. Other articles written by students are invited by the Collegian for publication.)

## AMEN CORNER

"Through the Years with the Disciples of Christ" will be the discussion led by Jean duBuy during a meeting of Phi Zeta Christo at the First Christian church, Sunday from 6:15 p.m. to 7:30 p.m. Worship will be under the direction of Jean Tanner. The group also plans a Valentine's party for the near future.

Canterbury club will have a meeting Sunday at 6:30 p.m. at the Parrish house.

"Glimpses of China" will be subject of a talk by Albany speaker and former missionary to China, Mrs. Lucille Libby, during the meeting of Wesley Fellowship from 5:30 p.m. to 7:30 p.m. Sunday at the First Methodist church. The talk will be the second of a series on China.

Philosophy Professor Edwin C. Kollman will speak on "Human Destiny," which is the theme of Religious Emphasis week, during Westminster Fellowship meeting at manse, at 6 p.m. Sunday. Refreshments will be served.

## Governor McKay, Top Legislators Honored by Phi Delt



Phi Delta Theta honored three distinguished alumni at dinner last week. Oregon Governor Douglas McKay, was at Oregon State college, and Senate President William Walsh and House Speaker Frank J. Van Dyke of the state legislature are both Willamette graduates. Pictured above, at the Phi Delt wing of Baxter hall, are (left to right): standing—Grant Swanson, John Whipple, Bob Muhr, Gordon Cline, George Hurt, student body president, Steve Faminow, Dale Morgan, Charles Patterson, Jim Gay, Ray Yocom, Bill Faminow, Duane Bartsch, Harry Summers, Jeff McDougall, Harry Ryan, Delbert Tillotson, Bob Bailey, John Griffith, Bob Skirvin, Roger Adams, Tom Huffman, Paul Cole and Larry O'Dell. Seated are Bill Walsh, jr., Sen. Walsh, Gov. McKay, Bob Sayre, chapter president, Rep. Van Dyke and Gene Schmidt. (See story on page 1).

## Four Classes Begin Earnest Preparations For 41st Annual Presentation on March 5

By Bill MacDougall

With only three weeks remaining, classes began in earnest this week to complete plans for the forty-first annual Freshman Glee, based this year on an "Alma Mater" theme.

Frenzied activity typified the week, as the four class chairmen, plus manager Bill Merriam, began to steer for honors attached to the traditional event scheduled for March 5 in the Willamette gymnasium.

### One Song Submitted

Chairman Gene Schmidt of the senior class revealed that one song had already been submitted to him, with two yet being composed. Since the class of forty-nine will be wearing caps and gowns, its costuming problem will be minor. "The seniors are really showing spirit," enthusiastically stated Schmidt.

Lowell Miller, representing the juniors, would only say that "Something unusual, perhaps unique," will be the contribution from that class, both in song and costume. Burnell Ambrose, speaking for the sophomores, admitted that no songs had been submitted to him or manager Art Dimond, and all plans were being delayed until a definite choice could be made.

### Freshmen Progressing

Freshman preparations were also progressing, with songs by Bob Hearn and Gladys Blue already under consideration, and other compositions reportedly being finished.

Bill Merriam announced that only two hundred members of each class will be allowed to participate, and that emphasis will not be placed as heavily this year on stage formations as was the former custom. Judging of the

musical presentations has been revamped so that the song itself will receive twice as much credit as was formerly given.

Rehearsals for Glee will start February 28, although they will be less frequent since formations are playing a lessened role. Merriam has scheduled a week of rehearsals, with arrangements for other practices being left to individual classes.

### Deadline February 24

All songs must be submitted to the committees on selection no later than February 24, so that last-minute planning will be facilitated.

Paul Nelson has begun work on

lighting effects, Margaret Sargent is handling ticket sales and printing. Pat Rice will plan the decorations, and programs will be supervised by Sue Mellor. Jerry Hayes is organizing ushers for the program, Gil Davies will head the stage crew, and Roger Halliday will be in charge of chairs, with Bob Hearn supervising entertainment and presentation.

For Unexcelled Quality in Jewelry . . . Visit **POMEROY & KEENE** 379 State

## Going Somewhere? Travel Refreshed



Ask for it either way . . . both trade-marks mean the same thing.

5¢

BOTTLED UNDER AUTHORITY OF THE COCA-COLA COMPANY BY

COCA-COLA BOTTLING COMPANY, SALEM, OREGON

© 1948, The Coca-Cola Company

**KAY'S**  
WOMEN'S WEAR

480 State

Salem

For That After Class Snack  
Come to

**THE ACE**

Almond Roca Candy Fountain Service and Magazines

127 North High

Phone 3-4044



Sustaining!



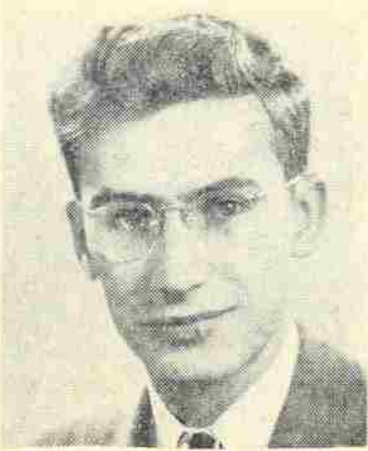
**MASTER Bread**

Popular -- because it's Good!

# Monday's Four-Class Presidential Nominees Shown



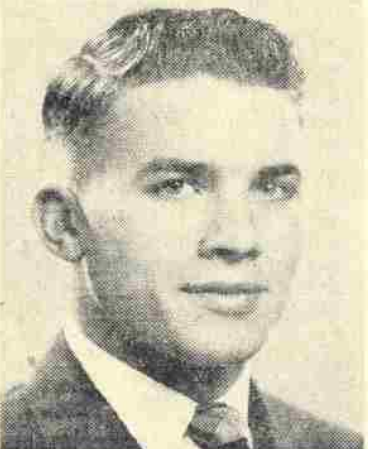
SENIORS: Bob Bailey and Will Henderson



JUNIORS: Gordon Cline, Bud Holmes and John Kaemmer



SOPHOMORES: Dick Endsley, Bill Hallin and Bob Skirvin



FRESHMEN: Don Benson, Sherman Bliss and Bob Shangle

All above pictures by Jeston-Miller Studios, Salem. See also story on Monday's election page 1.

## Second Semester Enrollment Drops

An enrollment decrease of nearly 100 students became evident this week, as an early count of incoming persons showed an increase of only 10 transfers to offset the loss caused by 22 graduating seniors and approximately 75 "dropped" pupils from last semester.

The administration, however, voiced its approval of the lowered registration, since facilities of the University were said to be overcrowded at the beginning of the fall term. The decrease had been expected, due to the refusal to accept a mid-semester freshman class, in addition to the full year plan which included only a minimum of new courses.

Compliments of the  
**Capitol Restaurant**

Rooms 9 and 10  
State Capitol Building

## Every Canine Has His Day

Schneebles, the Phi Delta Theta canine friend, was there.

Yes, Schneebles was on hand in the gymnasium, as weekly chapels on that day, discontinued during the war, were reinstated.

As guest speaker Dr. Leland Foster Wood of New York opened his address on "Love and Marriage," Schneebles chose that moment to carry on in the manner which most dogs employ to gain attention, namely, barking. After that he didn't have a dog's chance.

Amid the cheers of the student body, Dean Raymond Withey closed in on him from the north, and Sophomore Tom Bartlett moved in from the south. Schneebles had no alternative but to dash for the balcony stairs, where he was corralled by an unidentified student.

Remarkably good-naturedly as Schneebles was being "escorted" out, "I have heard that every dog has his day, but this one has a lot of FAITH."

Dean: "This kissing going on under my nose has got to stop."

When You Think Drugs Think  
**Schaefer's Drug Store**

135 N. Commercial St.

## CARTER Slings the Ink

Commentary on the Week's News

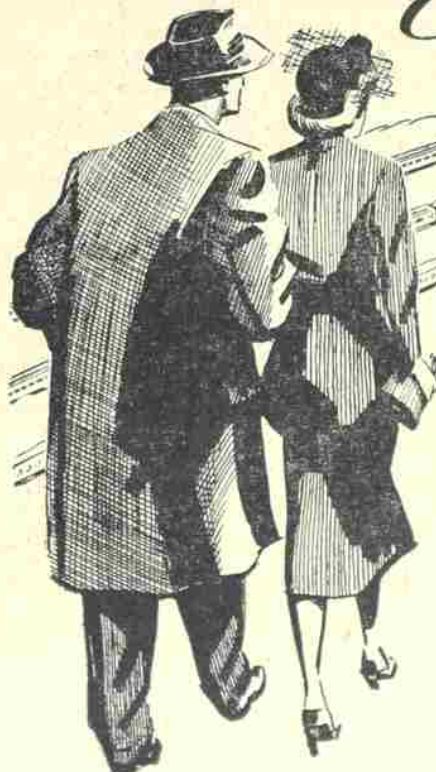
**THE WORLD AT PEACE:** The attention of the world has been focused for weeks on the "trial" by the Hungarian Reds of Joseph Cardinal Mindszenty. Last week the prosecution asked that he be sentenced to die. Tuesday the Reds, probably well aware of the power of martyrdom, sentenced the nation's primate to life imprisonment. Pope Pius and many others all over the world are protesting loudly and vigorously. The top ranking Hungarian official in this

country and eight of his subordinates have resigned in protest of the action. It remains to be seen how far reaching the effects will be on the international Communist movement. . . . Norwegian Foreign Minister Lange is in Washington conferring with Secretary of State Acheson and representatives of other nations involved in the proposed North Atlantic Defense Pact. Lange came in open defiance of the Soviets, who had offered to sign a non-aggression treaty if Norway refused to join the western nations in a treaty. Observers have voiced the opinion that this is an open move to secure submarine bases in Scandinavia. War rumors are flying again. . . . Ben-Gurion's Mapai party gained a clear-cut victory in the Israel elections, polling 35 per cent of the votes to the Communists' 3.5 per cent. . . . The Soviet economic bloc, their answer to the Marshall plan, is still causing a lot of talk, but the western powers don't seem very worried about it. Dean Acheson and ERP head Paul Hoffman have both expressed optimism over the program's accomplish-

ments and possibilities. They have asked congress for a 15 month extension, to the tune of five and a half billion dollars.

**THE HOME FRONT:** Commodity prices are still slipping in most parts of the country. Grain is said to be the lowest since OPA went off. Livestock is flooding the eastern markets and prices are skidding there, too. The complaint has long been inflation; now some are getting hysterical of a possible deflation. . . . The new labor bill in congress has killed most of the T-H law's sore points, saved some of them, salvaged much from the old Wagner act and added a little that is new. Labor representatives had a chance to approve it before it went to Capitol Hill. . . . These two factors could bring an easing-up of wage boost demands. . . . The Hoover committee is beginning to meet opposition. . . . After Dewey-man Hugh Scott kept his GOP chairmanship by a close vote, Dewey attacked both the left and the right within the party and called for a "middle-of-the-road" policy (middle of the GOP road).

*Traveling East...* 



## UNION PACIFIC

Safely... speedily... comfortably... regardless of weather. Enjoy a carefree, restful ride on one of Union Pacific's three fine daily trains East—economical coaches, comfortable Pullman accommodations, dining and lounge cars.

### DAILY SERVICE EAST

Streamliner  
"City of Portland" "Portland Rose" "Idahoan"  
Lv. Portland 5:30 p.m. 10:00 p.m. 8:30 a.m.

For complete travel information, consult  
GENERAL PASSENGER DEPARTMENT  
Room 751 Pittock Block Portland 5, Oregon

## UNION PACIFIC RAILROAD

Road of the Streamliners



*Remage's*