



With four freshman coeds providing atmosphere, newly-elected Glee Manager, Dave Foote (left) and his assistant, Rich Hawkins, begin formulating plans for the annual singing contest. The coeds holding last year's Glee banner are (left to right) Carol Walton, Eli Griffith, Ruth Taylor and Joyce Caster. (Photo by Burr Baughman).

## Foote Chosen to Guide Glee

Dave Foote has been elected to serve as Freshman Glee manager for the 1962 Glee. Foote lists among his other campus activities, president of the SAE pledge class and a member of the elections committee.

FOOTE has appointed Rich Hawkins as his assistant Glee manager. Work on Glee has already begun. Sign-up sheets have been posted in all freshman living organizations this week for freshmen to sign up for chairmanships. Each applicant must write a paragraph concerning his qualifications, why he wants the chairmanship and what he will do if he is selected chairman.

From these applications, Foote and Hawkins, with the aid of dorm counselors and pledge trainers, will select the chairmen.

Chairmanships open are decorations, souvenirs, tickets, lighting, back drop, entertainment, publicity, projection, ushers, chairs and floors,

records, stage crew, budget, pianos, recording secretary and corresponding secretary.

FOOTE AND Hawkins say, "The committee chairmanships are the key to Glee, and we hope that our fellow freshmen sign up for these chairmanships. This is a great opportunity for you to work with Freshman Glee in one of these committees."

The budget and chairs and floor committees are new committees this year. The budget chairman's chief function will be to coordinate money raising functions to help make Glee a profitable program.

HEADING the freshman class as song leader is George Blakeslee, with Pete Ruotsi as formation leader. Sophomores have selected David Beier and Don Lorenzen for song leader and formation leader. Leading the junior class are Sue Lewis, song leader, and Doug Simon, for-

ing, substituting or re-instating the wearing of rook lids, and on the participation in the freshman leaf rake.

RAY Honerlah reported that due to schedule conflict, there may be no Wayfarer concert at this time. Hope still remains for the concert being held December 8 or 9, pending removal of these conflicts. The new Fine Arts Society has agreed to handle all publicity for this event.

Other reports given included a Parents' Weekend report by Gayle Emerson, and a report concerning the Oregon Federation of Collegiate Leaders held last weekend at Lewis and Clark. Frank Swayze reported on Homecoming, asking for recommendations and criticism. Especially commendable were the Friday night activities, including the jazz concert and the sock hop. The tug-of-war which substituted for the greased pole climb, was especially successful, according to Swayze.

BOB ELDER reported that Dave Foote was elected Freshman Glee manager, with only 159 frosh voting. John Baker was chosen Spring Blood Drive Manager.

Scheduling of the sociology film series has apparently evaporated, according to Student Social Life Committee Chairman Jim Brown.

mation leader. Gary Frame and Ed Sasaki are heading the senior class in these positions. Anne Petrie and Stu Hall will head the parodies and senior cutup committee.

As a final word, Foote says, "The success of Freshman Glee depends on the cooperation of all."

## European Tours Offered Students

Next summer, for the first time, there will be three SITA study tours conducted under the auspices of Willamette University. Dr. Marion Morange will lead a group to France late in June. After a tour of the country, the students will attend classes for four weeks at Grenoble in the French Alps.

MISS MARIJA UDRIS will take a second group of students to Germany at about the same time. After their tour of the country, the group will settle down to four weeks of study in Stuttgart. The third trip, a Spanish tour, will be led by Prof. Clarence Kraft. The group will travel through Mexico before their six weeks of study at the University of Guanajuato.

The French tour has been offered by the University 11 times in the

## WU Students to Mull 'The Lonely Proud'

"The Lonely Proud" has been chosen by the executive committee of Christian Resources Week as the theme for this week of religious emphasis to be held on campus, February 7, 8 and 9.

"THE TITLE symbolizes each in-

dividual's feelings about his own attitudes toward his faith and beliefs. It is a title which is to be interpreted as the week progresses with regard to the individual, the individual in the church and the church," comments Verrill Redo, manager.

Speaker for the week will be the Reverend Roy Nichols, eminent Negro Methodist minister. Though most famous for his work on the race problem in the United States, Nichols' week at Willamette will be highlighted by the above topic. He will speak at three formal convocations and will also appear at informal seminar sessions.

"AS IN past years Christian Resource Week will include seminars, inter-house firesides, movies and special religious displays," comments Carol Moholt, publicity chairman. "But this year we are concentrating on doing a few things well and not overloading the week with too many activities. In previous years, students have not had the time to attend a large number of activities and because of this we are limiting the program somewhat," Miss Moholt adds.

Working under Miss Redo, the executive committee consists of Sally Bowe, seminars; Carol Moholt, publicity; Ron Williams, firesides; John Baker, chapel; John Binford, follow-up; Dianne Lord, hostess; Jan Johnson, movies; John Vaagen, promotion; Dave Marsters, displays; Merle Gillespie, program; Ann Peterson, secretary; and Norman Barley, member-at-large.

In addition to the Rev. Cal McConnell, faculty advisors for the group consist of Dr. Edwin Stillings and Dr. Howard Runkel.

## First Drama Continues Run

The drama department's first play of the year, "Look Homeward Angel," continues tonight and tomorrow night in the Fine Arts Auditorium. The play will be headed by Chuck Bush and Martha Wynd, and is the story of the life of Eugene Gant.

Tickets for the two performances have been on sale all week in the Fine Arts Auditorium box office and are free to all Student Body card holders. Students may obtain tickets today or at the box office before either of the performances. All seats are reserved and additional tickets may be obtained for a \$1.

"Look Homeward Angel" is a three act comedy-drama written by Ketti Frings based on the novel by Thomas Wolf. The play is a winner of the Pulitzer Prize and New York Critics' Award.

The scene takes place in a small town in North Carolina, in the fall of 1916. The three acts center around the Dixeland Boarding House.

Students are reminded that this is a reading performance with special lighting, blocking and costuming.

The curtain rises at 8:15 p. m.

## WU Faces TV Possibility, Might See Brain Competition

Action is now being taken to prepare Willamette for a possible appearance on "College Bowl." This television program is a General Electric sponsored series in which brain and not brawn are honored, featuring an academic contest between colleges.

ONCE before Willamette has been invited to appear on the program, but no adequate preparation had been taken. To prevent this from happening should another invitation be received, the Student Academic Committee, headed by Judy Smith, is checking into the matter.

The Student Social Life Committee is investigating the problem of "general school spirit" at future Homecomings. It will also submit recommendations for either abolishing,

## Game Tickets on Sale

A limited number of tickets for the Willamette-Linfield game tomorrow night are on sale in the Business Office. Student price with Student Body card is \$1. Reserved seats for faculty and the public are selling for \$2. All of the tickets sold are for seats under cover in the south section of the Linfield stadium.

## Campus Scene

FRIDAY—Play, "Look Homeward, Angel," 8:15 p. m., Fine Arts building.

Sigma Chi house dance. IRL meeting, 6:30 p. m., Lee House.

Beta Theta Pi house dance. SATURDAY—Play, "Look Homeward, Angel," 8:15 p. m., Fine Arts building.

Delta Gamma house dance. Game, Willamette vs. Linfield, at McMinnville, 8 p. m.

TUESDAY—Vesper convocation, Dr. Kirkland West, 11 a. m., First Presbyterian Church.

Student recital. Skeptics Corner, 6:15 p. m.

All-campus dance, 7 to 10 p. m., in Matthews Hall.

WEDNESDAY—Thanksgiving vacation begins, 4 p. m.

MONDAY—Thanksgiving vacation ends, 8 a. m.

NOVEMBER 29—SEA meeting, 6:30 p. m., Waller 2S.

past 12 years it has been associated with SITA tours, but the trips to Germany and Mexico are being sponsored by Willamette for the first time.

Each tour group will return to the United States early in September.

SITA, the Students International Travel Association, was founded in 1933, and today, over 20,000 students and teachers from all over the United States, and from 39 foreign lands, have participated in its programs. SITA tours give the student a chance to "really see" the country by getting to know the people, and also present him with a program of serious study in a recognized educational institution for the achievement of international understanding.

THESE study tours are open to high school graduates from all over the United States, who are at least 18 years of age, and who have had a minimum of two years of high school study or one year of college study of the language spoken in the respective countries they will visit. While studying at the universities, the students will live in the homes

## IRC to Discuss Neutral India

"India - Neutral or No" will be the topic of discussion at the International Relations Club meeting to be held this evening at 6:30 p. m. in the Lee House lounge.

Kamal Kamdoli, an Indian graduate student in civil engineering, the Rev. Tracy Gipson, a missionary in India for ten years, and Carol Stenger, a WU freshman who studied in India for five years, will lead the discussion of the political and economical factors which determine the neutrality of India. All students and faculty members are invited to attend the meeting.

of nearby families, thus getting to know some of the people of that country and to learn more about the country itself.

All students are expected to register for credit in the courses they take at the foreign schools and are able to receive anywhere from two to six credits for their summer of study and travel. About 15 to 20 students will be able to participate in each tour. The application forms and more specific information on dates and costs of each tour will be available to interested students later in the year.

## Young Pianist Plays Series

November 27, when the curtain goes up on the second program in the Distinguished Artists series, Willamette University students will have the opportunity to hear Robert Mueller, a young American pianist from Berkeley, California.

Recognized as an able interpreter of modern music as well as of the works of classic and romantic composers, Mueller has studied under Moissaye Boguslawski in Chicago, Egon Petri at Cornell University, and most recently Harald Logan in San Francisco.

Since his recital debut in 1950, Mueller has been active as a concert artist in the cities of the West Coast. In 1953 he was awarded the San Francisco Music Critic award and in 1955 won the San Francisco Symphony Foundation award.

The Willamette concert will be held in the Fine Arts auditorium at 8:15 p. m. Tickets are now on sale and can be purchased from living organization representatives or at the door.

## Willamette Collegian

Official publication of the Associated Students of Willamette University. Entered at the Postoffice at Salem, Oregon, for transmission through the mails as second class matter. Published weekly except during vacation and examination periods. Subscription rate \$2.00 per year. Phone number EM 4-9992.

MARILYN SPARKS  
Editor

JIM CLOSE  
Publications Manager

### Now Is the Time . . .

To quote a well-known walrus, "Now is the time to talk of many things" such as letters to the editor and library books.

The letters to the editor deserve praise and approval. It is gratifying to see so many students thinking and interested in questions beyond the treadmill of studies and social activities. The letters have shown an awareness of life and its problems.

On the other hand the great exodus of books from the library shows a lack of consideration for others and immature thinking. Even books from the reference shelves have been disappearing at an increasing rate.

This loss is disturbing for two reasons: the honest students are unable to do their required assignments, and one wonders about the code of values of the dishonest students.

The solution to the problem could be one of several. The stacks could be closed to all but the librarians who would then find the requested books. Each student could be checked for extra books as he left the library. Each student could be trusted to follow an honor system and confine his research to the library.

The last answer would be preferable to all those students who wish to be treated as adults. If they can only convert their comrades, the problem will be solved, the library will not lose any more volumes from its limited stock, and the professors will not be without their personal copies which they had placed on reserve.

### Only a Brick, and a Blind Girl

Dear Editor:

I'm mad. I've been mad for several years but now it has become almost unbearable. My condition stems from an article I recently read which concerned a little girl, blind from birth, who was able to see after an operation. Imagine, if you can, that lovely little girl—beautiful, is a better word—beautiful not in her outward appearance but in an ecstatic sentence which gave her inward vitality.

She immediately thrilled to color—at long last freed from the bonds of tacitly. But what object would you think fascinated her first? Something colorful—maybe hair ribbons. A thousand guesses would go far from the true source of her ecstasy for it was a brick—an ordinary building brick. Yes, a brick—something we would consider mundane and even disgustingly ugly. Think, if you can, on the fascination of a brick while I unburden myself of my madness.

Resolved: that we do not use our God-given perceptual capabilities beyond the bare minimum of necessity.

WE ARE moving in a void—allowing ourselves to mold, stagnate—devoid of the dynamic nuances which crowd that nether world beyond the brink of our present perceptual horizons. I'm mad. Where are we going in such a hurry that we cannot open our eyes to see, our ears to hear, our nose to scent the idiosyncratic and even incomparable splendor which surrounds us?

How many of us have paused to really see the metamorphosis of nature this autumn—notice the changing colors of the maple, birch and ash trees? It's quite a simple thing. Have we seen the pastel parade of nebulous pink clouds these crisp, autumn eves, or the misty, delicious birth of radiant Sol these sharp yet rosy morns?

HOW MANY of us have made any effort to grasp and hold the fragrance of burning autumn leaves that tantalizes and suggests—that fractures single thoughts into a myriad of melancholy memories? Have we missed the rhythmic, mysterious electricity of steely-grey rains and the syncopated crackle of dry leaves underfoot . . . crocheted web-patterns on car windows after a frosty morn . . . the soft crunch of steps upon a frosted lawn . . . the pianissimo dissonance of Mill stream harmonies . . . the yellow mosaic which stretches curb to curb over leaf-strewn streets as a carpet?

Now I ask you, do we use our God-given senses? Emphatically no! We're blinded, masked against scents, bundled from sounds, encased against any sensual delight—locked within a shell of mediocre, disgusting and ugly rationalities. I'm mad.

We must learn to, or rather, cultivate our existing sensual possibilities—to fulfill our sensual destinies as creatures born with the capacity to experience joy in the wonders we perceive. Have you been thinking about the little girl with the brick?

David E. Marsters

## Who Are Loyal Americans?

### Covert Drive

Dear Editor:

After reading the many letters and articles which have appeared in the Collegian lately, in reference to some of our more interesting Conventions, I find that it is time to put in my feelings on the subject. In observing the campus reaction I find an appalling number of people who either actively support communist aims, or in a flashing desire to join the so-called liberal ranks leave themselves wide open to unintentionally support the aims of the party. Too many people do not seem to realize fully the nature of this covert drive, or else they are afraid to oppose it for any of a number of reasons. Here on this campus some of these people are trying to ridicule out of existence those who would try to keep our country strong. Why should you be afraid to call a spade a spade, even if it is disguised?

Do you think you can deal with a man who has killed more people and committed more crimes against humanity than any other single person in all history?

I agree that we cannot succumb to the "red hysteria," but we must begin to think clearly and move forcefully to protect the principles upon which America was founded. Let's not sell out any more of the world as we did in 1944-45. Many more people than us have given up much more than fine homes, soft beds, and cocktail parties to face hardships and maybe death so they could live in freedom and direct their own lives.

I do not know about anyone else on this campus, but America is the best thing I have ever had and I will most assuredly be dead before I am red—of any shade thereof.

John F. Kreis

### Christian Way

Dear Editor:

The following letter appeared in last Sunday's Oregonian. In view of the fact that many students are distracted from the editorial page of the Sunday paper, we feel that this letter, because it is so relevant to current campus issues, should be reprinted in the Collegian. We

## Students Discuss Religion, God

### Dignity of Minister

Dear Editor:

A fellow by the name of Mr. Smith wrote a letter last week concerning what he considered to be the religious misconstructions offered by Rev. Joe Harding at a recent convocation. I would like to urge a note of caution to Mr. Smith and to those of like temperament.

Somewhere between the time that a student discards the myths (not untruths, but the means of conveying a truth to the average audience) that founded his childhood beliefs and the time that he gains a more profound foundation, he achieves various stages of knowledge as to the real "stuff" of life. Along this road which continually challenges the individual's religious (that to which he is ultimately loyal) beliefs, there are numerous opportunities to lend persuasion to others who are perhaps also on the same search, so to speak.

It is my firm conviction that one who preaches must assume a certain amount of responsibility for the outcome of those whom he influences. Therefore, I urge all those who feel qualified to comment publicly on that which is ultimately important, to turn the beam of introspection upon their foundations with double efforts before attempting to influence others.

In his concluding paragraph, Mr. Smith urged readers of the Collegian to, "find strength in themselves and by themselves." This suggestion of surveillance of the "self" is indeed a logical starting point in a search for anything, including wisdom.

In summation, I am personally able to find much more dignity in the challenge offered by Rev. Harding to "search without fear" than in the statement by Mr. Smith which defined for all readers that which

is important, reality itself. It was a wise man who said, "A little knowledge is a dangerous thing." Paul McGilvra.

### God and Reality

Dear Editor:

Last week Howard "Tyke" Smith's letter to the editor flatly stated that reality, "when truthfully faced, is without the 'ghost' of God!"

I challenge Mr. Smith to prove to the campus that God is NOT a part of reality. Mr. Smith stated that the origin of religion is fear. If one accepts this statement, one would have to assume that man created God. Therefore one could conclude that reality does not include God. But such an argument begs the question. For Mr. Smith's first premise involves the assumption that reality is without God.

Mr. Smith's phrase, "when truthfully faced," is, indeed an interesting one. Does Mr. Smith mean to imply that those of us who claim to face reality and find God a part of that reality are liars or are disillusioned? Are Paul Tillich, Reinhold Niebuhr and Karl Barth liars? Are all of the ministers in Salem, as well as many of the professors on this campus disillusioned?

I am not asserting that it is possible to prove the existence of God. Immanuel Kant emancipated both philosophy and theology from this task when he showed the impossibility of either proving or disproving the existence of God. I am asserting that Mr. Smith has no logical grounds for declaring that reality is without God.

I also wonder just what Mr. Smith had in mind by "a complete affirmation of self." The question is, "What kind of self affirmation does Mr. Smith want?" Does he want the kind that may produce a Khrushchev, a Stalin, a Hitler? If

not, what criteria does Mr. Smith propose to govern a "complete affirmation of self?"

Bill Frick

### Reality of God

Dear Editor:

I wish to comment on Tyke Smith's letter to the editor in the latest issue of the Collegian.

I have no quarrel with Tyke's statement that each person must face reality for himself. And if he wishes to define religion only as an escape from reality, I have no quarrel with that; and I might even be inclined to agree.

But I am uncomfortable when Tyke takes the logical leap from disposing of religion as an escape from reality in the first place, to disposing of God as a feature of the reality (which we must face) in the second instance. Now I had assumed that the reason Tyke felt free to dispose of religion as he did was that there is no God(s) for religion to be about. This would then be a premise in his argument against religion. But Tyke concludes: "reality, when truthfully faced, is without the 'ghost' of God."

So now I do not know whether the non-existence of God in reality is a premise or conclusion for Tyke's argument. The only thing I can think of is to take it as both a premise and conclusion, in which case his argument is without logical structure.

In which case, if I were a theologian, I would not be too concerned about Tyke's discussion of religion and God as a threat to my livelihood. For it seems to me that Tyke has tacitly prefaced his statement with a phrase that a believer might use: namely, "I believe . . ." The real difference is that a committed Christian would probably say: "I believe that God is the ultimate reality which I must face," instead of, "I believe that there is no God in the reality which I must face."

Gregg Monroe

### Poor Teaching

Dear Editor:

I have a complaint against Willamette which I have been wanting to voice for some time. It concerns the now basic difference between "teachers" and college professors. These two terms, while once generally thought of as synonyms, no longer bear resemblance to one another.

Poor teaching methods, outdated grading, dull and uninteresting lectures poorly presented; all these are commonplace on the Willamette campus.

"Harpers Magazine" recently brought out this nation-wide problem in its article "College Scene." The college publication of the Methodist Church, "Motive," stated "knowledge alone is not education." I could not agree with them more!

In closing, what have you done this year, Prof ———, to improve your classroom, your grading system, to up-date your material, and to make your students think? I would like to know, because it certainly is not evident.

John Fraser

### Karl Marx and Critics To Be Honors Topic

"Karl Marx and His Critics" will be the topic of the Willamette University Honors Program lecture, Thursday, December 7.

Speaking on this subject will be Aubrey Castell, author of "Adam Smith to Karl Marx" and "Introduction to Modern Philosophy." Castell is currently a professor of philosophy at the University of Oregon. The program will be held in the Waller Hall auditorium at 8 p.m. A question period will follow the lecture.

### Bookstore Safeguards Lost Articles

Missing anything? Lost anything? Well chances are your missing article, the one that "just got up and walked away," is hiding in the lost and found department of the bookstore. During the weeks since school started, many things such as umbrellas, glasses and numerous books have been turned in. Students are urged to check for lost articles.

thank Dr. Watkins for allowing a reprint of his letter.

(To the Editor: Now that you and Gov. Hatfield have been shown up by the "Birchers," our only loyal Americans, for the Red sympathizers you are, you can join those other "Comsymps," Dwight Eisenhower, Gen. George Marshall, the chief justice of our Supreme Court, and the teachers of our schools who have been sabotaging this republic.

I DEMAND that you stop at once all subversive activities such as publishing both sides of every question. Such "un-Americanism" smacks of the so-called "liberal" tendencies of those left-wing revolutionists, Thomas Jefferson and George Washington.

Don't you realize that in upholding freedom of speech, freedom of the press, and suggesting that we might come to understand some of our fellow men whose skins are different colored, or who live on the other side of this earth, you are being not "American," but you are giving aid and support to the Communists?

YOUR EDITORIALS infiltrate the minds of young readers and make them more concerned over the menace of atomic radiation or the aggressive international policies of Soviet Russia. Whereas, every good, old-fashioned, red-blooded American knows that the real danger to this country comes from: The school teachers, the textbooks, the colleges, the Protestant clergy, labor unions, Drew Pearson, Supreme Court justices, the State Department, the War Department (which thinks generals should stick to being generals instead of becoming politicians), ex-presidents, and thousands of Communist sympathizers among our neighbors.

THE patriotic and Christian way to fight communism is to heckle speakers at public meetings, smear the loyalty of statesmen with whom you disagree, sow suspicion between friends, stimulate hate, call everybody who disagrees with you unpatriotic, let the people know how they are being betrayed by our Supreme Court, State Department, Pentagon, etc.; write name-calling and villifying letters, tell parents that their children are being turned

against America by a conspiracy of teachers and textbook writers, threaten school teachers and blacklist all liberal, original-thinking college professors (let the Russians have the new ideas).

Finally, since the FBI and the Central Intelligence Agency are incompetent to find the real Communists, let's get every citizen to appoint himself counter-espionage agent and see if he can catch some of his disloyal friends and neighbors.

AND BY all means "indoctrinate" the children in America. We can't trust it to come out on top if our young people have access to all information and a free choice.

This is the way to unify our country, build confidence in America, strengthen it in its fight against Soviet Russia, and help establish the brotherhood of man.

The patriot who wants to save his country by such a program should first be sure to tell folks he is a "Christian." We don't want anybody doubting that these policies stem directly from the teachings of the Prince of Peace.

JOHN G. WATKINS, Ph.D.)  
Phillip L. Emert  
Gerald M. Bill

### Honors to Ponder "Red Threat"

"What Is the Menace of Communism?" will be the topic of the first Honors Student-Faculty fireside. The gatherings will take place December 2, at the homes of Dr. Martha Springer and Dr. Ivan Lovell, according to Rosalie Johnston, chairman of the sophomore honors steering committee.

Sign-up sheets will be placed in the Cat Cavern so that anyone interested may sign up, and the groups can be so arranged that the gatherings will be small enough for a worthwhile discussion. Miss Johnston emphasized the fact that it is hoped that the discussions will bring in the influence of the convocations Willamette has had on communism, the effect of the Communist Party of the United States and such other factors as will make the discussion stimulating and meaningful.

# Students Parley Two-Dollar Fee Hike

The task of voting on a proposed increase of \$2 in Student Body fees will confront Willamette students in the near future. The proposed fee of \$15.50 will provide the Associated Students of Willamette with an increase of funds of \$5,000 per year.

FINANCE Board, under the chairmanship of ASB Treasurer Carl

Williams, has released two plans for the use of this \$5,000 increase.

The majority report, first plan presented before Student Senate, divided the increase in this proportion:

Convocation	\$1,500
Distinguished Artist Series	3,000
Social Fund	250
Travel Fund	250

DISCUSSIONS of the above allocations appear elsewhere on this page.

"The present travel fund is inadequate to meet the many requests for money," explains Williams. "The allocation usually boils down to a first-come, first-serve basis. This increase could cover more Student Body officers' expenses and enable

the rally squad to travel with the team to games."

The second report presented before Student Senate asked for a \$1

## Cox Votes Thumbs Down On Increase

By RODNEY T. COX

We are being asked to vote for the proposed increase in ASB taxes. We are being told that the increase in ASB taxes will go a long way to solve ASB problems.

What problems are the ASB going to solve with the additional funds? One is the problem that the students of Willamette University are not supporting the Fine Artists Series. How can an increase in ASB taxes bring about the necessary cultural revolution, which will make the series a success? Money alone can't solve this problem.

The other major items, the travel fund, the rally squad uniforms, the social fund and the paying of ASB officers are all plans for the great equalization. These proposed increases in spending are based upon the principal of taking from the many and giving to the few. What is so special about the few, and not the many.

Basically, those who serve the school, the few, don't want to see any hardship wrought upon those who serve the school. It would be nice if somebody was concerned about the hardships that are wrought by the high costs of attending this institution, upon those who do not have the good fortune to be among the few.

We all have what seems to be a God given right to vote for the increase. Is it possible, if this right is so strong, that the students could vote for a reduction in ASB taxes? In reality this day will probably never come. The ASB can't even be content with spending \$31,000 a year of our money.

raise which would supply a \$2,500 increase. Proposed allocations in this plan are:

Social Fund	\$ 250
ASB Officers' Salaries	1,800
Reserve Fund	450

"THE BASIC idea of this report," explains Williams, "was the establishment of a total of \$1,800 in salaries for Student Body officers. This would be broken down into

## Music Series Needs Money

"In the past, performers have been willing to appear for the Distinguished Artists Series without a guarantee of profit. However, this arrangement no longer exists." This comment by Jerry Whipple, advisor to the Finance Board, summed up the present situation of the Distinguished Artists Series.

A SUGGESTION, coming from a recent meeting of the Finance Board, includes the concert series on the Student Body ticket. This would guarantee a certain amount of funds for the purchase of performing artists.

A problem posed by this suggestion is, however, that there could only be a limited number of tickets sold to the general public, as each student would automatically be guaranteed a seat.

AT PRESENT, Oregon State University and the University of Oregon include the artists series in their Student Body card.

"If the allocation were received, it would be used not so much for big-name performers but to improve the over-all quality of the series," commented Whipple.

A \$1500 increase for the convocation program would "generally increase the level of convocations," commented Rusty Whitney, member of the convocations board.

This past year the convocations committee had approximately \$500 at its disposal compared with approximately \$250-\$300 in past years.

ONE OF the results of this year's increase are the four speakers obtained with University help through the Columbia Lecture Series.

Next year there will be no reserve fund from which to draw, as there was this year.

Additional funds supplied by the increased allotment would "enable us to get people who cost the money - good speakers," commented Pauli Hibbard, convocations manager.

## Skidmore Speaks For Raise

By PAT SKIDMORE

There have been many misconceptions concerning the purpose of the social fund. Perhaps it would be best if it were renamed the rally commission fund.

THIS MONEY has to cover the costs of new Honeybear uniforms, repairs to Barney Bearcat, crepe paper for the goal posts and a halftime allotment. What is left over is distributed among the rally squad to partially cover cost of their uniforms.

This semester the uniforms cost each rally member \$75, and the student body paid each of them \$10. The Honeybear uniforms are usually replaced every two years; however because of the lack of funds, they have been retained for several years. Barney is falling apart.

My argument to increase the social fund would be to allow students who would be financially unable but talented to run for rally.

\$300 slices to each of the five Student Body officers. The feeling was that because of the time spent in performance of Student Body duties, the officers should receive salaries to reduce any possible financial burden."

The discussions in Finance Board meetings, the research and the formation of possible plans are the first steps in achieving a constitutional revision of this type. Recommendations from Finance Board will go to the constitutional revisions committee and then to Student Senate.

THE recommendations will then be posted on campus and will appear in the Collegian.

A student vote of two-thirds majority of the constitutional quorum is necessary to ratify a constitutional revision.

Approval of the Board of Trustees is necessary to establish the plan as a University policy and as a cor-

rection in the University bulletin.

THE FIRST possible date that the plan would be in effect is the Fall of 1962.

Finance Board meets Monday afternoons at 2, usually in the conference room in Eaton. Members include Carl Williams, chairman; Anne Petrie, secretary; Pat Skidmore, first vice-president; and members Bob Burrow, Judy Rhorer and Rusty Whitney. Meetings are open to the interested students at all times.

## Hemingway Backs Salary

By TOM HEMINGWAY

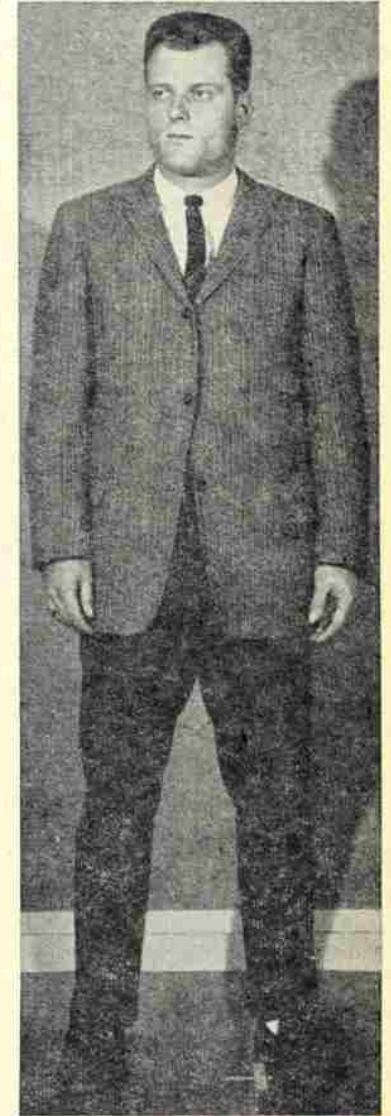
One area in the proposed increase in Student Body fees which has received particularly heavy criticism is the proposed scholarship fund for Student Body officers. I will try to answer one by one the major arguments against this proposal that have been advanced to date.

IF YOU are going to a \$2,000 per year school, you do not need financial aid. First of all, the fact that a person spends this amount of money on education does not mean that he is financially solvent.

Lewis and Clark has a tuition comparable with Willamette's and yet they have a \$650 fund for Student Body presidents.

BEING A student officer is an honor and honor is enough compensation. Although it is a great honor to serve in such a capacity it also takes up to 30 hours per week to do a good job. This rules out the possibility of outside employment. Furthermore, being an elected officer of any large body is an honor but proportionate financial compensation is usually granted for the time and responsibility required.

It has never been done before. All that I can say to this argument is if everyone had this attitude, we would still be wearing skins and swinging clubs.



Student Body President Tom Hemingway takes a firm stand in defending the use of 65 cents of each \$2 raise in Student Body fees as scholarships for Student Body officers, thus opening the opportunity for many more students to afford the time to serve in student government.



Rodney Cox

**WALT'S SHOE REPAIR**  
233 N. High  
Opposite Senator Hotel

**CAPITOL** EM 3-5050  
Ends Tuesday  
"ROMANOFF AND JULIET"  
With Peter Ustinov, Sandra Dee and John Gavin  
Also Ending Tuesday  
"THE SERGEANT WAS A LADY"  
Starts Wednesday  
"THE COMANCHEROS"  
With John Wayne  
Also  
"SQUAD CAR"

**ELSINORE** EM 3-5798  
Held Over for the Second Week  
"SPARTACUS"  
With Kirk Douglas, Laurence Olivier and Jean Simmons

**HOLLYWOOD** EM 4-4713  
Ends Tuesday  
"PARENT TRAP"  
With Hayley Mills and Maureen O'Hara  
Also  
"DONALD AND THE WHEEL"  
Starts Wednesday  
First Run Movie Held Over From the Elsinore Theater  
"SPARTACUS"  
With Kirk Douglas, Laurence Olivier and Jean Simmons

**ABC Printing Co.**  
481 State St. EMpire 3-1882  
Dance Programs  
Invitations  
Stationery  
General Printing

**Fast Service!**  
- HAMBURGERS  
- CHILI-BURGERS  
- BEEF-NIKS  
AT **SLOPPY JOE'S**

**BUY a new PORTABLE TYPEWRITER \$1.25 Only Per Week O.A.C.**  
**Kay** 429 Court St. EM 3-8095  
**TYPEWRITER CO.**  
lowest prices - easiest terms in town

Just One Block From Campus  
Corner of Court & 12th Sts.  
**Cavalier Motel**  
T.V. - Room Phones  
Kitchens Available  
Excellent Accommodations & Rates  
FOR RESERVATIONS  
1177 COURT ST., N.E. PHONE: EM 4-2215

# social scoop

By PENNY VULGAS  
Collegian Society Editor

The social page seems to be one of few pages which have thus far passed all censorship, which may be attributed to the wholesome social activities scheduled so astutely on our campus by the Activities Board.

Next year's alums, the class of 1962, planned a party two weekends ago which originated in the originations of a unique class song entitled: "At the end of the mine lies pizza number 15, Big Bad John."

The Pi Beta Phi house has welcomed Sharon Schroeder as a new member of its pledge class.

Mrs. Helen Plumb, Alpha Phi district governor, has been a recent visitor to the campus. Not only does she help coordinate the programs of the Alpha Phi chapters, but last week helped organize an impromptu pledge sneak.

Members retaliated by making the pledges eat dinner West Point style, complete with countdown, misdemeanors punishable via squirt guns.

Chi Omegas serenaded the Kappa Sigs and SAE's last week in order to repossess their door plate and oars, respectively

Constructive award, contrary to past articles, was the awarding of the Doney Hall Coed of the Month. An idea presented to the hall recognizes the efforts of particular girls to make dorm life more enjoyable. This month's award goes to Carol Carver for her work and time on the hall's fall house dance.

Next Tuesday night finds the sophomores sponsoring an all campus dance from 7 to 10 p.m. in Matthews Hall basement. This is an informal stag dance, with 5 cent admission fee.

Alpha Phis will take time out from studies Saturday from 10 to 12 a.m. for a special coffee break at the home of Governor and Mrs. Mark O. Hatfield. Once a chapter advisor, Mrs. Hatfield has extended the invitations to all collegiate members of Willamette's chapter of Alpha Phi.

## Hillbillies Hop Tonight; Embalmers Plan Fete

Quite a contrast to the formality of the Sigma Chi Sweetheart Ball is the Beta's "Hillbilly Hop," fall fun house dance planned for tonight. The chapter house will be the scene of the dancing from 8:30 to 12 p.m.

ACCORDING to Peter Verloop, publicity chairman, the Betas, stimulated by memories of the movie *Li'l Abner*, have decided to change the academic atmosphere to that of a hillbilly setting. Guests and dates should then relieve themselves of the necessary strains and stresses caused by old historic midterms.

Original ideas for decorations were taken from the movie itself.

IN CHARGE of the evening is social chairman Harry Coolidge. Assisting Coolidge are Pat McLarney, decorations; Jon Goode, music; Pete Smith, physical arrangements; Gary Mansavage, chaperones and invitations; Hugh Stites and Dick Barton, refreshments. The pledge class, under the leadership of Jon Wilson, will direct its activities the next day toward bringing everything back to normal.

WITH ALL intentions of portraying morbidity, the Delta Gammas present their fall house dance tomorrow night, with the theme titled "The Embalmer's Ball."

Funeral services will be held in the DG house at 8 p.m. with a funeral procession planned to take couples out to Macleay Grange at Macleay, scene of the dance itself.

ACCORDINGLY, dress for the evening will be anything morbid and black. Decorations will center around tombstones, coffins, enhanced in character by black lights. "Live" music for the dance will be provided by the Kon Tiki band, comments social chairman Anne Petrie.

## Evening Serenades Announce SAE Queen of Violets Court

Serenades by the men of Sigma Alpha Epsilon last Tuesday night set the royal atmosphere as they announced the names of the three lovely coeds who would reign as members of this year's Queen of Violets court.

THE CHARMING freshman women, selected for the SAE honor are Carolyn Low, Lausanne Hall; Fran Marlett, Alpha Chi Omega; and Sharon Overby, Pi Beta Phi. Announcement of the court was made by Chuck Darby, SAE president.

According to Darby, the next meeting of the court will be November 29, when they will be guests at dinner. Announcement of the



Barbara Burnett



Tori Hull



Pam Smith

## Sigma Chi Sweethearts

Screams of joy and excitement reigned for three evenings this week as the men of Sigma Chi serenaded women's living organizations to announce the names of this year's Sweetheart Court. Each coed was the recipient of a bouquet of red roses and a necklace in the shape of a Sigma Chi cross.

Monday evening found the seven semi-finalists as guests of the Sigma Chis at dinner along with former members of the court, Pat French and Anne Davenport, 1960 Sweetheart.

THAT SAME evening the first strains of the Sigma Chi marching song were heard outside Doney Hall to announce that freshman Barbara Burnett had been selected as a member of the Sweetheart court.

This 5'5" brunette hails from Beaverton, Oregon. She is a member of Honeybears and lists among her interests tennis and her major as education.

TUESDAY night's serenade led to the revelation that Tori Hull became the second member of the Sweetheart court. This freshman Sweetheart is from Sacramento, California. Pledged to Pi Beta Phi sorority, Miss Hull is a 5'4" brunette, education major who is also a skiing enthusiast. Among her extra-curricular activities she lists Honeybears and Y-teen advisor.

The court was completed Wednesday evening with the announcement at Lucy Anna Lee House that Pam Smith was the object of the Sweetheart serenade. Miss Smith, a sophomore from Portland, is a sociology major.

The 5'7" brunette is the tallest member of the court, and is pledged to Alpha Chi Omega. She is a member of Angel Flight and the

Collegian staff, and last year was a semi-finalist for the SAE Queen of Violets court.

AFTER WEEKS of preparation, tonight finds the Sigma Chis and their guests at the annual Sigma Chi Sweetheart Ball. Highlight of the evening will be the announcement of the 1961 Sweetheart, successor to the honors now held by Miss Davenport.

Scene of the gala affair is the

Gold Room of the Marion Hotel with dancing scheduled from 9:12 p.m. to the music of Bill Sousa's dance band.

DECORATIONS for the ballroom will center around the traditional giant blue heart bearing the crest of the Sigma Chi and the picture of the Sweetheart Court.

Social chairman in charge of plans for the Sweetheart selection and dance has been Doug Stum



Pat Weaver, National College Queen

What does this lovely College Queen want in her diamond ring?

Miss Pat Weaver, America's National College Queen, revealed her feminine taste as well as her practical sense when asked about diamond rings. She selected as her favorite the lovely Artcarved Evening Star—one of Artcarved's award-winning designs. Why did she choose it? Because of its breathtaking beauty and guaranteed quality. You see, every Artcarved ring is guaranteed in writing for all the years to come by America's most respected ring maker. You buy it with confidence—wear it with pride.

Visit your local Artcarved Jeweler and see why Artcarved diamond rings have been the choice of millions for more than a century. Perhaps you can start hinting for yours now!

NATIONALLY ADVERTISED IN AMERICA'S LEADING MAGAZINES

**Artcarved**  
DIAMOND AND WEDDING RINGS



EVENING STAR  
First choice of America's College Queens

J. R. Wood & Sons, Inc., Dept. CP-31  
216 E. 45th St., New York 17, N. Y.

Please send me more facts about diamond rings and "Wedding Guide for Bride and Groom." Also name of nearest (or hometown) Artcarved Jeweler. I am enclosing 10¢ to cover handling and postage.

Name \_\_\_\_\_  
Address \_\_\_\_\_  
City \_\_\_\_\_ County or Zone \_\_\_\_\_  
State \_\_\_\_\_

For Famous Brands of  
**SPORTSWEAR**  
**DRESSWEAR**

**Kay's**  
DISTINCTIVE APPAREL FOR WOMEN

460 State Street  
Charge Today — Take Time to Pay

**TYPEWRITERS**  
**Adding Machines**  
**Calculators**  
**CAPITAL OFFICE**  
**EQUIPMENT**

148 High St. S.E. EM 3-5584

**Gay's**  
fine  
candies

for any occasion

135 N. High

We Give S & H Green Stamps

**Capital Drug Stores**

TWO CONVENIENT LOCATIONS TO SERVE YOU

405 State Street 4470 N. River Rd., Keizer

Free Delivery — Free Parking

# Crown Hinges on 'Cat Fight

## CONFERENCE STANDINGS

	W	L	Pct	O	D
Linfield	4	0	1.000	177	16
Willamette	3	1	.667	122	62
Col. of Idaho	3	2	.600	140	116
L. & C.	2	2	.500	89	60
Whitman	1	3	.250	32	151
Pacific	0	4	.000	27	128

Tomorrow night will reveal the NW Conference champion, as Ted Ogdahl's Bearcats travel to McMinnville for an 8 o'clock encounter

with the highly rated Linfield Wildcats in the final game of the season for Willamette.

LINFIELD, with an 8-0 seasonal record and 4-0 in conference action, needs only a victory over the Bearcats to complete their first undefeated season, while a Willamette win would mean a co-championship with the Wildcats. Linfield has scored 312 points through their unblemished record with 198 of them in their last four starts. Paul

Durham's club was rated fifth in the NAIA poll and ninth in the Associated Press' small college poll last week.

A well-balanced team, offensively they possess senior quarterback Bill Parrish, who paces the conference in passing with 74 completions in 140 attempts for 977 yards; junior fullback Steve Bequin, a 190-pounder who leads the conference in rushing with 863 yards in 129 carries for a 6.7 average; senior halfback Bill Dressel, a speedster who is second with 762 yards in 124 carries for a 6.1 average; and junior flankerman Val Barnes, who has caught 29 passes for 538 yards to lead the conference.

THEIR CRAFTY defensive unit that has allowed only an average of nine points a game, is led by the two "Y" boys, linebackers Hugh Yoshida and Tom Younkers.

COACH TED Ogdahl expressed concern over stopping the Wildcats tremendous offensive punch. "I'd like to think we can stop Linfield's offense, but we haven't played great defense yet this year. What really shakes me up is that nobody has come close to stopping Linfield all season." His primary hope for an upset will rely heavily on the all-important passing arm of junior quarterback Tommy Lee.

Everyone is encouraged to arrive early at Maxwell Field, as a standing-room-only crowd of 3000 is expected for the civil war contest.



Jiggs Burnett scoots around left end in easy Homecoming win over Whitman. Sailing won't quite be as clear in tomorrow night's feature for the crown against Linfield. (Photo by Burr Baughman).

## Athletes' Feats

By BOB WOODLE, Sports Editor

Rather than feature just one individual this week, Feats would like to pay tribute to seven men . . . gridders who have a lot at stake in tomorrow's big battle with Linfield.

THESE MEN have never played on less than a championship ball club at Willamette. In three years, the Bearcats have annexed the NW Conference crown and owned it outright. Tomorrow the only chance is for a share of the title. We can assume that not only will intestinal fortitude (guts) play a big role in the outcome, but personal pride enters the complete picture to a great extent.

We are sure that Doug Austin, Dee Crooch, Stu Hall, Clint Kersten, Jim McCaffery, Larry Miller and Kevin Nagel would appreciate a whole hearted support from Willamette students for their contribution and efforts in the past three seasons, and for the culmination of this one.

Austin is a 190-pound guard from Dallas, Oregon, who has been a starting offensive guard for the entire four years. He is a good blocker with quick movements, and also handles Willamette's kick-off chores. He will be wearing the big number 60 tomorrow night.

CROOCH IS A two-year letterman tackle, tipping in at 230 pounds. Hailing from Roseburg, big Dee is especially adept at hauling down enemy quarterbacks before they can get the pass away. Look for number 77 to be giving Wildcat QB, Bill Parrish, the big rush.

Hall's winning days span even farther back than the Bearcats' success, as he helped bring two titles home to Beaverton high school. Hall has been acclaimed one of the finest linebackers in the league, and has received player of the week accolades for his performances this year. Number 86 will be in on a lot of tackles tomorrow, and will be a target for some Lee aerials on offense.

KERSTEN IS A 5-7, 160-pound halfback, who, although not seeing a great deal of action, has seldom missed a practice session in his entire four years. Hailing from Woodburn, Clint bears the number 31 on his jersey.

McCaffery has only been at Willamette these past two years, having transferred from Boise JC. Jim was used to the single wing attack, but has blended in well with Ogdahl's "T" at halfback. He is a home town boy (North Salem) and will be wearing number 42 for the last time.

MILLER WAS featured last week, so not much can be added to pay tribute to this hard charging fullback. He will be one of four 4-year lettermen on the squad this year, and his departure will leave a large hole in the backfield to be filled. His 195-pound frame will be seen carrying number 33 through the Wildcat line.

Nagel is proof that power sometimes comes in small packages. He carries his 170 pounds on a 5-6½ frame, and charges into the line like a 200-pound fullback. Another 4-year letterman, Nagel is one of the 'Cats break away threats, and will be seen wearing jersey number 40.

SO THERE you have them, seven men who have worked hard for their success, and who will be climaxing it all tomorrow night. Let's help them make it a real memorable occasion by lending our support, tomorrow, 8 p. m. at Linfield.

## Swim Workouts Begin With Depleted Ranks

Swimming coach John Paulus has indicated that anyone interested in performing on Willamette's swim team this year should begin workouts at the YMCA after 3 p. m. each day.

Swimming for the first time will be considered a varsity sport, and letters will be awarded upon basis of participation. Paulus revealed that the first meet will be held December 11 against Linfield.

Points are given for the diving phase of swimming competition, so any man interested in spring board action is encouraged to turnout.

Men interested in turning out may talk with coach Paulus at the law school or contact Steve Murdock at the Sigma Chi house.

**BOB'S**  
**19¢**  
**HAMBURGERS**  
NORTH CAPITOL AT HOOD.  
WHERE THE FOOD IS GOOD!

## SO FAR SUPERIOR



STA-NU  
DRY-CLEANING  
KEEPS GARMENTS  
LOOKING NEW

**Wieder's**

264 High St. N.E.  
EM 3-9125

## Archers Aim at National Title

Willamette coeds have completed two of the three weeks scheduled for this year's version of the international archery tournament. This tourney is sponsored by the Archery Sub-Committee of the Division for Girls' and Women's sports although both men and women are eligible to shoot in the meets.

The event is divided into different classes to compensate for various facilities for shooting at each school. Willamette is entered in class C which calls for a 20 yard distance and 10 rounds of six arrows each for each of the three shooting weeks.

Each university enters its top four teams each week, sending the scores to national headquarters via telegram. Results are tabulated and returned to the schools early in February.

The first week of shooting saw Judi Dana, Carol Hawes, Barbara Morse and Janet Cousins cop the first team honors. Scores shot by each of the women were 528 for Miss Dana with 4 all golds. (an all gold entails shooting all six arrows into the bullseye). Miss Hawes followed with 518 points and 2 all golds, Miss Morse with 464 points

## Bearcats Steamroll Whitman

After turning four of five interceptions into a quick 27 points and scoring 33 points in the first 11 minutes of their Homecoming contest with the Whitman Missionaries, the Willamette Bearcats proceeded to demoralize the Missionaries 53-7 last Saturday afternoon at McCulloch Stadium.

About the only time that Whitman was in the game was for the flip of the coin. Bearcat reserves saw plenty of action, and Linfield scouts saw plenty of "nothing."

Under the guidance of "coach McCaffery," Willamette shifted into a single wing (?) featuring center Willie Hartman at blocking back, McCaffery at tailback, Jiggs Burnett at fullback and tackle Jim O'Hair at wingback.

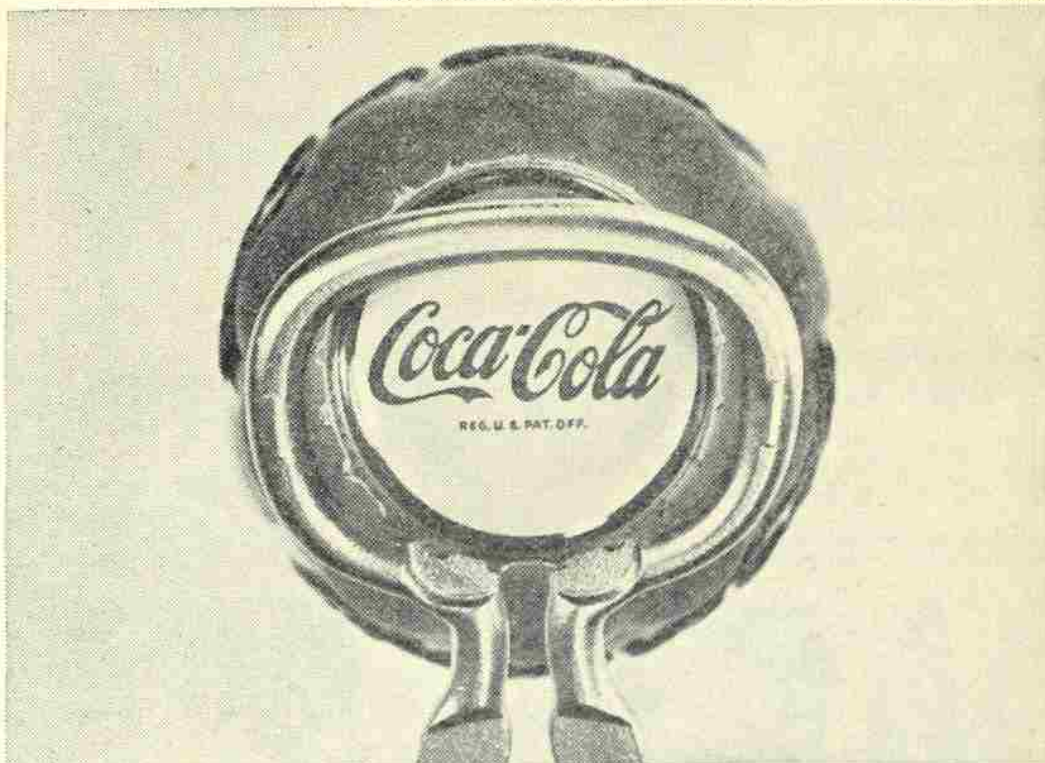
Scoring: WU-McCaffery 1 run (T. Lee kick); WU-Miller 3 run (Lee kick); WU-Chan 37 pass from Lee (Lee kick); WU-Hall 30 pass interception (kick failed); WU-O'Hair 14 pass from Lee (kick failed); Whit-Iverson 2 run (Weber kick); WU-Hall 29 pass from Ruotsi (kick failed); WU-McCaffery 1 run (Lee kick); WU-Nagel 2 run (Pederson kick).

**Ace's**  
**University Barber Shop**  
WATCH COEDS TIP-TOE BY WHILE GETTING HAIR CUT.  
1256 State Street - SALEM, OREGON

JV BASKETBALL TURNOUT  
All men interested in playing JV basketball, turnout November 27, 5:30 p.m. in the gym.

**EXPERT SHOE REPAIRING**  
Come In and Try Our New Slip-ons  
**JIM'S SHOE SERVICE**  
Shoes — Repairs  
183 N. High St.

COPYRIGHT © 1961, THE COCA-COLA COMPANY. COCA-COLA AND COKE ARE REGISTERED TRADEMARKS



**OPEN WIDE and SAY A-H-H-H!**  
Get that refreshing new feeling with Coke!

Bottled under authority of the Coca-Cola Company by PACIFIC BOTTLING CO., Salem, Oregon



The freshmen strained but didn't quite make it in Saturday's tug-of-war contest. The sophomores managed to drag the struggling men through the stream of water and therefore won the competition which was held after the Homecoming football game. Only casualties seemed to be a lot of soaked clothes and sore muscles from unaccustomed exercises. (Photo by Norm Gifford).

### Music School Plans Program, Faces Varied Activity Slate

The College of Music has scheduled a varied program for this year. The purpose of the planned events is to give the students participating the experience of public performance and also to provide opportunity for the cultural development of the rest of the student body.

STUDENT organization recitals are included in the five aspects of this program. They include the performances of the large student groups - the choir, orchestra and band.

Another part of the planned program is the senior recitals in which seniors from the music department participate. During this semester Audrey Irvin, viola, is scheduled to play on January 17. Jeff Rutkowski, junior, will present a recital

on his cello on December 5. Rutkowski is appearing in another phase of the music program, the junior recitals.

THE LAST two aspects of the program are the faculty recitals and the student recitals. The latter consists of a number of programs during the year in which various students of the Music School participate. These programs are held at 3 p.m. every Tuesday in the Recital Hall.

The faculty program consists of different members of the faculty presenting concerts.

### Contest Faces WU Debaters

Representing Willamette University at the Western Speech Association Forensic Tournament in Fresno, California, will be William Bafus, Duane Pinkerton, James Monroe, Howard Liebreich and David Pettibone. The tournament will be held at Fresno State College on November 20-22.

All forensic entrants will debate this year's national debate proposition: Resolved: That Labor Organizations Should Be Under the Jurisdiction of Anti-Trust Legislation. In addition to debate, Monroe will enter oratory, and Pettibone will take part in the extemporaneous and impromptu speaking events.

Willamette and 85 other colleges and universities throughout the western third of the United States have registered for this major forensic conclave of the year in the Pacific area.

Dr. Howard W. Runkel will attend the tournament, serving on the board of judges. He will remain in Fresno for the rest of the week for the 1961 Western Speech Association Convention. He is a member of the Convention's Legislative Assembly.

### ROTC Cadets Spread Wings, Take First Solo Flight

All the advanced Air Force ROTC cadets in the flight instruction program have completed their preliminary ground and dual flight instruction time and have soloed. The first cadet in the FIP to solo was Fred Doshier, followed by Ted Alexander, Seward McAulay, Richard Wayland and Tom Hemingway. Willamette's detachment is one of the first in the nation to have all members solo.

The program is administered at McNary field by Kreitzberg Aviation under contract with Willamette University. The program is sponsored by the federal government and is conducted under the supervision of the Federal Aeronautics Administration, Willamette University and the Air Force. The graduates of this program soon go into jet-aircraft training in the United States Air Force.

The flight instruction program consists of a 36 hour flying program which the cadet has to complete during the senior year of advanced Air Force ROTC. The completion of this program qualifies the candidate for a private pilot's license.

In addition to the 36 flying hours of the FIP, 20 hours of ground

### WU Blood Drive Draws Near, Living Groups Select Chairmen

December 5, the date of the Fall Blood Drive, is drawing near, and the Blood Drive chairmen from the various living organizations have been chosen. These men and women will have the responsibility of working with the campus Blood Drive Chairman Rusty Whitney in informing Willamette students of the need which exists for their participation in the Blood Drive. They will also collect the parental permission slips from students under the age of 21.

The chairmen are: Alpha Chi Omega, Susan Macduff; Alpha Phi, Rosalie Johnston; Baxter Hall, Alden Jencks; Belknap Hall, Bill Bliss and Grover Gentry; Beta Theta Pi, Gregg Childs; Chi Omega, Karen Smith; Delta Gamma, Cari O'Donnell; Doney Hall, Carol Ewing; Kappa Sigma, Max Taggart; Lausanne Hall, Arlene Herringer; Lucy Anna Lee House, Barbara Flint; Matthews Hall, Mike Brenamen; Phi Delta Theta, Doug Lee; Pi Beta Phi, Cathy Campbell; Sigma Alpha Epsilon, Brad Kerwin; Sigma Chi, John Walker; and Emily York House, Mary Nell Niemi.

A Blood Drive Executive Committee has been formed which in-

cludes Fred Bauer, director of the Marion County Chapter of the Red Cross; Dean Walter Blake, administration representative; John Bradford, the former Blood Drive chairman; John Baker, the future Blood Drive chairman; and Rusty Whitney, present Blood Drive chairman.

This committee will coordinate Blood Drive activities throughout the year in order to retain knowledge gained from previous drives.

### WU Students Jockey Jazz

The Salem area now has an altogether new type of show. It's "Portrait in Jazz" disc-jockeyed by Peter Ebner and Sam Cady, filling in for Dick Teague. They play only good jazz on Sunday evenings from 9 to 11 p.m. on radio station KSLM.

Their main purpose in putting on the show is to develop an interest in good jazz in this area. Cady and Ebner commented, "In our recent interview with Cal Tjader, our opinions on the need for a jazz show were strengthened by Tjader's remark of 'This is a jazz-starved area.' With our own opinions along with Cal Tjader's, we feel the Salem area definitely needed a good jazz show and so we met the need with 'Portrait in Jazz.' Everyone enjoyed the interview with Cal Tjader so much that we hope to include other interviews with musicians and personalities connected with jazz from time to time."

**TYPEWRITER RENTALS**  
LATE MODELS  
REASONABLE RATES  
3 Months Rental  
May Apply On Purchase  
**ROEN'S**  
456 Court Ph. EM 3-6773

### Collegian Plans Skip

Due to Thanksgiving vacation beginning next Wednesday, the Collegian will not be published for the week. The next copy will be available the following Friday, December 1.

**HUTCHEON PAINT STORE**  
ART MATERIAL - PAINTS  
"Buy Your Paint At a Paint Store"  
S & H Green Stamps  
Court at Commercial Street  
Ph. EM 3-6687

EAT AT . . .  
**NOPP'S**  
GOLDEN PHEASANT  
FINE FOOD  
Open 11 A.M. - 8:30 P.M.  
Sunday 12:00 - 8:30 P.M.  
248 Liberty NE

**Wayne's Barber Shop**  
Crewcuts a Specialty  
146 13th S.E.  
Three Barbers  
Salem Oregon

### BAG's Mull Service Goal

A truly effective and vital service organization on campus is the goal set by the members of Beta Alpha Gamma for their service honorary, according to Linda Crawford, president.

Working toward this goal, BAGs completed their work as sponsors of the "Ugly Man" contest, worked at the polls on Glee elections, sold mums for Homecoming, served at the Koffee Klatch following the game, and served again at the dedication of Matthews Hall Sunday.

Helping with these new responsibilities are the three new members, Judy Jessen, Dianne Lord and Lynda Shelley.

As part of their new emphasis on organization, the members are meeting regularly every Tuesday night and are wearing black outfits for all BAGs activities.

**FREE!**  
Specially designed W.U. checkbook cover  
Available only at U.S. National, this colorful checkbook cover is FREE when you open a checking account. A Special Checking Account will save you time and provides a record of college expenses. Open yours now.  
**U.S. NATIONAL BANK**  
UNIVERSITY BRANCH  
13th & State  
LADD & BUSH BRANCH  
307 State Street  
NORTH SALEM BRANCH  
1990 Fairgrounds Road N.E.  
WEST SALEM BRANCH  
1117 Edgewater Street N.W.  
THE UNITED STATES NATIONAL BANK OF PORTLAND Member Federal Deposit Insurance Corporation

**MONK'S**  
440 STATE ST. SALEM