

Big Plans For Moms And Dads

Parents' Weekend

Moms and dads will find the campus ready to entertain them next Friday as the annual Parents' Weekend begins.

First event will be the all-campus talent show, Varsity Varieties, at 8:15 p.m. Friday. Chick Edwards, weekend manager, will welcome parents and announce the winners of the Campus Chest Big Man and Woman On Campus titles during the evening.

Bill Gaynor, Varieties manager, has been running his cast through rehearsals this week. Eight student talent acts make

up the tentative list of performers.

Dave Welch and Clay Morris will bring Ferrante and Teicher to the Fine Arts Auditorium with their double piano playing. Other pianists, Steve Gray and Doug Forsyth, will play solos.

Folksingers will share the spotlight. Margaret Lawler and Mary Ann Hagen form one duo while Ric Seberg and Gene Heliker will also strum and sing music they composed themselves.

Peter Fullenwider will add a touch of Spain with his classical

guitar. To complete the program Sue Carlson will sing selections from musical comedy and Betty Woodworth will tap dance.

Tickets for Varsity Varieties go on sale Monday in the living organizations and the Student Body Office. Price is one dollar.

Saturday's activities will include a Parents Association Meeting, an academic preview and an informal coffee hour with the faculty.

Special excitement has been added to the College of Idaho-Willamette football game by Rick Hoebee, halftime manager. He has booked sky-divers to "smoke-bomb" their way down to McCulloch field.

The traditional All-Campus Sing will present college songs from serenades to noise-makers, sung by living organizations in competition for the laurels of first place.

A parent-student dance will finish the evening with more music. No activities are scheduled Sunday so that parents may visit students and attend church if they wish.

Committee chairmen working on the weekend, besides those already mentioned, are Len Anderson, Claudette Ebi, Sam Pierce, Mary Moore, Larry Hillhouse and Tom Angelo.



FRESHMEN Ric Seberg and Gene Heliker perform one of their original works at next Friday night's Varsity Varieties show. Tickets go on sale Monday at the Student Body Office for a dollar.

Enrollment Hits 1500 At Last

FOR the first time in history Willamette's enrollment has reached 1500 students.

The increase came despite a smaller enrollment of freshmen this semester as compared with last year. The administration has stated the temporary closure of rooms at Doney and Lausanne Halls due to construction, and the desire to

have most freshmen live on campus, as causes for the smaller freshman class. The class has 208 men and 168 women this semester.

Enrollment in the Liberal Arts college totals 1174 students, 672 men and 502 women. The sophomores are 322 strong with 178 men and 144 women. The juniors boast 244, 141 men and 103 women. The seniors have the smallest class with 232 members, 145 of whom are men and 87 women.

Special graduate students number 31, enrollment in the college of Music is 47, and the college of Law has registered 239 at present.

The College of Law has increased enrollment to 125 in the first year class and about 240 total as a transitional step toward the capacity of 300 in the new Truman Wesley Collins Legal Center. The Center, across from Lausanne Hall, is to be completed sometime next spring.

Since the capacity of the old law building at the northeast corner of the campus is only 190 students, many law classes are meeting in Waller Hall. Entering law students come from 143 schools in thirty states and nine foreign countries according to Dean Seward Reese of the College of Law.

For Phi Deltas

IFC Recommends Social Pro

IFC recently recommended social probation for Phi Delta Theta for the fall semester, 1966. Reason given was the

vomiting of an inebriated Phi Delt on the floor of the Chi Omega house during a scheduled serenade. IFC made the recommendation on last Monday, after meeting with Dean of Women Vera Haberer and Dean of Students, Scott Rickard.

Doug Bosco, President of IFC, made the following statement: "It is unfortunate that this event had to occur, in that it casts a shadow on all of our fraternities. Before any house reprimands another, however, I would suggest that they review their own policies. I know the Phi Deltas are not the only of-

proctoring assignments.

For help in applying for aid, seniors may consult Dean Doenges, who maintains a file on all graduate opportunities.

The following deadlines have been established for national fellowships:

Danforth --- November 1, 1966. This fellowship is open to men and women who are seniors or recent graduates of accredited colleges in the U.S. and have a serious interest in teaching as a career. They must also plan to study for a Ph. D. in a field common to undergraduate colleges. Willamette has been asked to nominate three candidates. The faculty will submit recommendations.

Those interested in being considered should let it be known.

Woodrow Wilson -- October 31, 1966. Candidates must be nominated by faculty member. Forms sent to the candidate must be returned to the Regional Chairman By November 20. Eligible are men and women with intellectual promise who are graduates of accredited colleges in the U.S. or Canada, and who at the time of nomination are not registered in a graduate school. The program's purpose is to attract men and women to the field of college teaching. Stipends for a single person will be \$1800 per year and for a married student \$2200 plus a dependency allowance.

Fulbright Fellowships -- November 1, 1966. These fellowships are sponsored by the Federal Government and are designed to assist eligible students in pursuing courses of instruction overseas.

Rhodes -- October 15, 1966. These fellowships for study at Oxford are available to a limited number of graduates each year. Willamette will nominate two or three seniors. Those interested in this fellowship should let a faculty member or the Dean's office know.

Marshall Fellowships -- October 22, 1966. These are awarded by the British government and are usable for study in Great Britain. Nominations from faculty members are necessary.

Juniors Pass

Poli Sci Exam

Some 65% of all students taking the Junior Qualifying Examination in political science passed the test. According to Dr. Shay this is a new high compared to last year's 50% pass rate.

The list of those who passed follows:

Tom Angelo, Doug Bamford, Steve Blixseth, Doug Bosco, Dave Brink, Don Brown, Jerry Brown, Denny Cole, Suzi Corcoran, Richard Cox, Gary Ennor, Dwight Ferris, Marie Francis, Bernie Fuller and Ken Fukunaga.

Others passing were Jim Gardner, Steve Guidinger, Dean Guyer, Steve Henigson, Dea Holt, Judy Keniston, Richard King, Keith Kinsman, Charlotte Langford, Sue Leeson, Mike Lincicum, Dave Olstad, Bobbie Payne, Martin Rohrer, Hans Rokeberg, Bob Selander, Peggy Shaffer, Alex Stein, Karen Swim and Tracy Terzian.

ROTC Qualifying Test Scheduled

The Air Force Officer Qualifying Test is scheduled for Saturday, October 8, at 8:00 a.m.

All interested students who have at least two years of either undergraduate or graduate study remaining should contact the Air Force ROTC office in the gymnasium and fill out a registration form.

This test is a prerequisite to Air Force ROTC.

CAMPUS SCENE

TOMORROW -- Football: Willamette vs. University of Nevada, McCulloch Stadium, 2 p.m.

Tuesday -- Model United Nations Organizational Meeting, Waller Auditorium, 6:30 to 8 p.m.

Willamette Collegian

Official publication of the Associated Students of Willamette University, Second Class postage paid at Salem, Oregon, 97301. Published weekly except during vacation and examination periods. Subscription rate \$3.00. Phone number 581-1641, extension 224. Ad space in The Collegian can be obtained through the Student Body Office, extension 244. For classified ads call 581-1641 extension 245.

JONATHAN T. CARDER, Editor

Lindsay Michimoto News Editor
Glen Pinegar Associate News Editor
Donna Wright Campus Editor
Joanie Loomis Society Editor
Al Gould Sports Editor
Douglas Bosco Editorial Page Editor
Mike DuBols Copy Editor
Dick Magruder Business Manager
George Mante Circulation Manager
Bob Hamel Darkroom Manager
Don Brown, Fred Walberg, Margaret Magruder,
Karen Cooper, Tony Robinson, L. Castle Contributors

Era of New Feeling

According to the concentric circle theory of sociology, the area immediately surrounding the center of a city is known as the area in transition. By this definition Willamette University qualifies as an area in transition.

And rightly so. The boarded-up homes, and campus construction are evidence of this.

But within the university itself a greater transition is taking place. A new "liberal" atmosphere permeates the campus. The "hallowed" traditions and procedures of a hundred and twenty-five years are undergoing a new and thorough evaluation.

Changes are taking place. Students now, for example, are actually considering themselves an integral part of the University, capable of working towards elim-

ination of its problems and needs. The chief reasons for this metamorphosis is the new administration as exemplified by Deans Rickard and Doenges.

Whereas in the past student opinion has fallen upon deaf ears (Run along and play kids, we've been doing it this way for 125 years and we're not about to change), it now is receiving consideration in present and future matters.

And it must be this way. Too long have students at Willamette felt like four-year transients who were spoon fed everything from courses to morals (in locis parentis). If students are going out to face a real world, then the education must be more than the aforementioned pabulum. Students through responsibility must mature and grow as the University itself matures and grows.

Campus Comment...

Great Issue

To the Editor:

Congratulations on last week's issue of The Collegian. It was excellent. Breadth of coverage is the mark of a good newspaper and it is remarkable that so many of Salem's businesses could be represented in a mere four page issue. Your new program of universal speed reading (one picture equals 1000 words) is a startling innovation, also deserving of congratulations.

I was pleased to note a return to traditional Willamette values in this year's editorial policy, especially the virtue of total restraint which was sometimes lacking in last year's editor. I refer, particularly, to your masterful handling of the potentially explosive issue raised by ASB President Bill Alberger in his President's Address. The subtlety with which you showed your editorial disapproval of his rabble rousing was beautiful. Tagging his plea for student participation in university policy formation, as an insignificant postscript, onto President G. Herbert Smith's eloquent and autocratic edict of student needs and desires, was a stroke of genius (provided that genius of restraint is not a contradiction in terms). Your refusal to comment on the twin issues of whether Greek houses should be saddled with independent live-ins and whether upper classmen should have the option of living off-campus was classic. It is heartwarming to realize that there is still one campus in our troubled world where a university president can issue a decree in full confidence that it will be neither questioned nor challenged.

Sincerely,
Jon McGladrey
a future old alum.

Real Understanding

To the Editor:

As many of you know, Willamette suffers from a decided inadequacy when it comes to any study abroad programs or exchanges with other universities both at home or abroad. But before we begin to condemn Willamette in our usual and most hearty manner, it is wise to take full advantage of the programs it does offer. I did, and because I did, I think it is most important that another take advantage of the opportunity this year.

I spent the spring semester as an exchange student at Bennett College. Bennett is located in Greensboro, North Carolina and is a college for Negro girls. As for the statistics - it is a four year college with about 600 students, all women, of course,

However, there is an abundant supply of the opposite sex right across the tracks at A & T College.

I decided to go to Bennett for no one reason. There were many reasons and they all get mixed up when I try to express them. For one thing, I was ready for a change from W.U. - any change! - Also, I'd never been east and I wanted to go very much. But I think that I mostly decided to go because I wanted to learn. I've always been an avid civil-righter but yet, I realized

(after a heated argument with a friend) that I didn't know what "the problem" really was. I knew no Negroes, I'd never been in a Negro home, had never had a close Negro friend. . . . I was getting all hot and bothered and I really didn't know for whom. So I decided to apply for the exchange. I was accepted and I went - and I certainly am not sorry I did.

PRESENCE NOT QUESTIONED

I really had no qualms about being accepted at Bennett and it is a good thing I didn't, for it would have been energy wasted. The girls (and the boys) were all very helpful and kind to me. I joined the choir and, through it, became a part of the campus. The choir sings at Chapel Services (attendance required) at Bennett every Sunday, so I couldn't help but be obviously there. Then there were those trips the choir took - once to Atlanta, Georgia where we sang at Morehouse College (a Negro men's school) and once to Williamsburg, Va., where we gave a concert at a Negro high school. My presence wasn't questioned in the least and my pale, little face was accepted without hesitation. I became a part of the college rather than just an observer.

Color just wasn't important and, because it wasn't important, it became a big joke. I had two roommates during the summer (I stayed at Bennett six weeks and worked in a Humanities School that Bennett holds for high school kids) and one was quite dark and the other, quite light. Everywhere we went, I always ended up in the middle. Before the six weeks were over, I was the piece of turkey between two pieces of toast (one of which was a bit burnt!)

SEPARATION HARBORS MISCONCEPTION

But what surprised me most about Bennett and the south was the fact that I just didn't see any white people. There is a complete separation of the races and consequently, a complete breakdown in communication. My roommates had never known a white person as a friend. They'd gone to separate schools all their lives, belonged to separate churches and fraternal organizations and lived in separ-

ate Negro communities. They didn't know my race as much as my race didn't know them. They harbored as many misconceptions about white people as white people harbor about them. Naturally, with such a complete separation, the Negro community does differ some from the majority community. How could anyone expect it not to? But, with a continued lack of communication, there will never be a basis for understanding and for getting to know each other

as individuals. And, if we never get to know each other as individuals - never get to the point we can understand each other, color will continue to be the vital, yet insane criteria. Instead of being a joke, color will continue to be a threat.

The Willamette University - Bennett exchange is a small operation, but it is so important that it be continued. It is only through communication of this sort that a real understanding between the races can be ac-

complished. The Willamette exchange is well thought of at Bennett and the girls there want the exchange to continue. So I hope there is a girl - either a sophomore or a junior - who would like to attend Bennett next semester.

Those who are interested in the exchange should contact me at Lee House or Dean Haberer. The opportunity is here - we should take advantage of it.

Doris Rose

'They all look the same to me'

By DOUGLAS BOSCO

While travelling on the train from San Francisco to Portland last summer, a friend and I noticed that an elderly couple to our left made comments on practically every notable object on the way. We were naturally curious to hear their reaction as they passed our alma mater. "Oh look," said the missus (and our ears perked up), "the Copeland Lumber Yard." The train passed on with no further comments from our friends.

If they had looked real closely, and I mean REAL close, they might have noticed some inconspicuous Greek letters on the sides of a couple of buildings. This distinguishes Willamette's Fraternity Row. To the casual observer the whole thing looks like a dormitory, and for all intents and purposes, that's about what it is.

A STRONG SYSTEM

This is not to say that Willamette's fraternity system is weak, because anyone who knows Willamette realizes this is not the case. Our six national fraternities each have distinctive personalities and each contributes greatly to the social and academic life of the campus. Naturally the physical plant of any fraternity is not the most aspect to be considered. Yet it does seem that the time has come to do some serious thinking about fraternity housing for the future.

PROBLEMS NOW

The first consideration is the monotony of similarity. In four of the older houses the floor plans are essentially the same. The furniture may be different, but as one rushee said, "they all look the same to me." These houses are getting older, too, and show the wear and tear of the years. The two new houses are also identical, and have advantages, such as the sleeping porch and more modern design, which the others do not have.

The big problem is space. Any of the four older houses can hold 33 people, and the newer

ones 32. As Willamette's enrollment increases it is becoming a big problem for the fraternities to take as many pledges as they would like merely because of housing. Every year fraternity men are scattered in Baxter, Belknap and in off-campus housing. This in itself detracts from the fun and spirit of fraternity life.

THE CRAMPED FEELING

The closeness of each house to all the other houses as well as freshmen and independents makes it difficult for a fraternity to establish identity, and especially to go about its business without worrying about the watchful stare of big brother next door. The school sticks its hands for frat guests (mainly for a two-dollar fee per night), and SAGA demands that each house police its own dining hall and pay for its visitors. One fraternity wanted to put a seal outside its house and the school refused permission.

DISADVANTAGES, TOO

Naturally there would be disadvantages to the prospect of having separate fraternity houses. For one thing, the cost of building a suitable house might be around \$150,000 to \$200,000, and taxes would have to be considered.

IFC BAN ON HOUSE-HOPPING

Willamette's Inter-Fraternity Council met Thursday morning and issued a ruling that prohibits fraternity pledges from depledging one house and immediately joining another.

The motion, passed unanimously by the four fraternities present, stipulates that "Any person who has been formally pledged to a fraternity house may not pledge another house, or be rushed by another house, until a period of ten weeks has elapsed since the date said person depledged his original

Another disadvantage might also be the extra mileage to and from classes. All of Willamette's fraternities, however, have liberal loan programs for building which can be arranged with their nationals, and as for the distance from campus, it seems to me that this would emphasize the fact that the fraternity house is a home and not a dorm.

A WORD FROM THE TOP

President Smith's office has indicated that the idea of separate fraternity houses can definitely be considered a possibility. The President asks that all six houses move if any are going to, and that this be done within four years. The school could then change its building

plans accordingly. This means that W. U. fraternities should begin plans this year if they want to build their own houses.

IN CONCLUSION

If the fraternity system is to grow at Willamette, and if each house is to develop a true distinction in taste and personality, then it seems that separate houses for our fraternities is equally as important as it is for the sororities. Certainly it is a question which each house should consider immediately.

house, or until the end of the semester in which he pledged. The names of all those who depledge any house must be reported to the Dean of Men."

The ruling came as a result of complaints that some freshmen who had already been pledged were being rushed by another house. IFC representatives voiced the opinion that this type of activity is unethical. "At this point," said one representative, "the freshmen are particularly vulnerable to suggestions that they depledge one house and join another."

Duncan, Hatfield Discuss Issues

Duncan Hits Varied Topics

By DICK MAGRUDER

Politicians throughout the nation are closely following the senatorial campaign of Congressman Robert Duncan (D.) and Gov. Mark Hatfield (R.). The intriguing character of the candidates and the overriding issue of Viet Nam make this race one of the most important and interesting of the '66 season. Congressman Duncan's visit to Salem attracted more than the attention of the capital city's Democratic loyalists. The Duncan team found two of the leading figures of State GOP politics on the capitol's streets to greet the Duncan Bagpipes. As the motorcade followed along State Street, Clay Meyers, assistant Secretary of State and mentor of the McCall for governor campaign nervously fingered his watch as he viewed the procession of Democrats. At headquarters the familiar face of Travis Cross, Gov. Hatfield's campaign coordinator, was scanning the scene from across High Street.

The Collegian reporters found Duncan a personable forthright candidate and it is hoped the following questions and answers will help present Bob Duncan -- the candidate.

INFLATION

When asked what question was asked of him most frequently, Duncan replied, "Viet Nam, of course, and then Inflation, but actually they are different aspects of the same thing. The governor doesn't want to talk about it (Viet Nam). He talks about mill workers out of jobs -- they aren't out of work! In specific areas you may find a 1 to 1-1/2% decline, but overall there is a 10 or 11% increase. His tax commission figures showing an increase of 7% can attest to the health of Oregon's economy."

More on the economy and inflation -- "You can't cut government expenses and still build everything the people want. There is nothing of an inflationary nature that won't hurt someone somewhere."

BLACK POWER

"I see absolutely no justification for rioting and attacks on person and property, but I do defend the right of peaceful assemblage and the right to petition for one's grievances. No one can defend the anarchy we find in some of our big cities. Order must be maintained on the first indication of disorder. Riots are symptoms of a disease -- we must suppress the symptoms AND cure the diseases."

POWELL

Answering a question concerning the recent move to "dethrone" Adam Clayton Powell, Duncan said this: "I won't prejudice Powell until all the facts are known, but if it takes a Powell to establish a principle in a democracy then the move by the Education Committee will be a good thing."

THE DRAFT

Responding to an always present question in the mind of the college male, Duncan said this about Draft reform: "Certainly the law isn't perfect, and I'm ready to support some needed changes. To cite an example I point to the recent authorization given the President by Congress to call up individual members of the Reserve and Guard to supplement the regular army. I seek to arrive at the least unfair method, but at the same time I must take into consideration the demands of the national interest. Our national interest doesn't lend itself to a return to a lottery system (presently at least)."

VIET NAM

On the elections in South Viet Nam and their meaning, and on Senator Morse's criticism of them, Duncan had this to say: "I find the results both most significant and most encouraging. I certainly take issue with those who say the Viet Cong have the support of the South Vietnamese people. After all, 80% voted in the face of Viet Cong threats of sabotage and murder. Over 500 casualties were inflicted upon the Vietnamese, but nevertheless the people made their way

to the polls. Political pundits were "expecting" 60% at a maximum. I think this election is indicative of the people's feelings concerning communism. Remember, over a million refugees have fled North Viet Nam (and they still are leaving). They are not going to North Viet Nam."

KRAFT POLL

Asked about the recent poll taken showing Duncan at 46%, Hatfield at 40% and undecided at 14%, Duncan cautiously stated: "I've never had a lot of confidence in polls except the one they take on election day. I am pleased with the response I get throughout the state; I'm encouraged; I think I'm going to win."

Bob Duncan obviously is staking his chances on Viet Nam, but I think it noteworthy to mention this fact. He is running a vigorous, versatile, and positive campaign. When asked about Hatfield's record as Governor, Duncan immediately responded with "I'm running a positive not a negative or attacking campaign. I'm not attacking Hatfield nor anyone else. I'm running on my record



as Congressman of the 4th District and on my position on the various issues of the campaign."

Hatfield Clarifies Viet Stand

By O. F. WALBERG

As election day draws nearer, more attention is turned to the Oregon Senatorial race. Throughout his campaign for this seat, Gov. Mark Hatfield has been misunderstood concerning his views on the Vietnam war. Because he asks that the American people review the present administration policy, it is often thought that he advocates withdrawal from Vietnam.

The following excerpts from a recent interview with the Governor by the OREGON VOTER should help to clarify Hatfield's position on Vietnam.

Gov. Hatfield continued: "America cannot pull out of Vietnam. We are there, and we cannot turn our back even if things were wrong at the onset. We must stay there until an honorable settlement is reached."

Commenting on Sen. Morse's charges of "illegal" and "unconstitutional" U. S. involvement, Hatfield rose to his feet stating, "It's too late to even discuss legalities -- we've 215,000 men there. We're committed."

"Furthermore," he declared, "When you start arguing legalities, you automatically advocate withdrawal." Withdrawal now, he implied, would be defeat in every sense of the word.

CRITICAL OF LBJ POLICY

The Governor, however, is highly critical of President Johnson's Vietnam war policy. He refused to back the administration last summer at the Governors' conference in Minneapolis, and following a White House briefing last fall, he publicly criticized the president for what he termed "contradictory" and "unclear policy."

GOV. HATFIELD'S CRITICISMS

What are Gov. Hatfield's criticisms?

Essentially they appear two-fold: (1) failure on the part of the administration to be "candid and truthful" with the American people in spelling out exactly what are its goals and objectives in Vietnam; and (2) the administration's "contradictory foreign policy," particularly with regard to communism.

In the first instance, Gov. Hatfield said we have been bombarded with "illusions, myths and secrecy about our goals and objectives in Vietnam . . . we have been told many things and many so-called facts, most of which have not been borne out or correct."

Outlining specifics, Gov. Hatfield displayed quotes from Sec. of Defense Robert McNamara:

In May, 1963, McNamara said: "The corner has been definitely turned toward victory." In Dec., 1963, he said: "We have every reason to believe that plans will be successful in 1964." In Feb., 1964, McNamara declared: "The U.S. hopes to withdraw most of its troops from South Vietnam before the end of 1965." In Oct., 1965: "The major part of the U. S. military task can be completed by the end of 1965." And in early Dec., 1965, he said: "We have stopped losing the war."

CONSEQUENCES OF BUILDUP

"The president," the Governor continued, "says we are committed to guaranteeing the right of self determination for through free elections."

"Just what would happen," asked Gov. Hatfield, "if a hardcore communist were to win a free election? What will we have accomplished? Will our boys have died in vain -- for nothing?"

He said, "No one sees any person in South Vietnam capable of winning a free election." Our first task, suggested Gov. Hatfield, is to help build Vietnamese support for a friendly candidate who could win such an election.

He continued: "The Vietnam struggle started as a civil war. Peiping later took advantage of the situation and moved in supplies and equipment to the Viet Cong and the National Liberation Front."

HO-CHI-MINH A SYMBOL

"What we must realize is that Ho-Chi-Minh is a symbol to the Vietnamese of liberation from the French Colonialists prior to and after World War II, and from the Japanese Imperialists during the War.

"Furthermore," said Gov. Hatfield, "the Vietnamese are concerned with only two things; Being left alone and having a full stomach. They do not understand what freedom is, and no people can be expected to fight for freedom if they don't understand it . . . they could care less about the philosophical debate over democracy vs communism."

ALTERNATIVES OFFERED

Gov. Hatfield offered what he thought are now the alternatives to escalating the war any further:

"There has to be a frank and open discussion with the American people on the administration's over-all objectives and goals.

"We must develop a Get-America-off-the-Spot program by gaining a multi-nation approach to a military and political solution. We've got to persuade our allies to stop supplying our enemy and unite behind us.

"And we must exhaust every alternative to bloody conflict. Escalation hasn't worked yet."

He said we should not be discouraged by the United Nations Security Council's "apparent lack of interest . . . we must be persistent in making the U.N. more effective; and we must insist on re-convening the Geneva Conference where the opportunity of Red China's participation exists. We have to meet them face-to-face."



European Year Recalled

By LINDA NAYLOR

This is the first in a series of articles by Linda Naylor. Linda spent her junior year in France studying at Aix-En-Provence. While in Europe she visited many countries. She enjoyed her year very much and believes that European study is almost a must for a language major. She hopes to encourage travel to study in Europe and would like to personally speak to any interested students.

If any of you have spent time traveling through Europe, you have introduced yourself to a small cross-section of the fantasy and excitement of the Old World. You may have been a member of an organized tour, on your own, on a study program, or with European friends. But whatever your situation, you most likely noticed how very Americanized the larger cities --- Paris, London, Berlin, Copenhagen, etc. --- are becoming . . . a disappointing find for many of us. Coca-Cola is found everywhere, tennis shoes are more and more popular, as are Levis, the hamburger business is booming, and "OK" is a standard response.

In contrast with this Americanization toilet paper comes in three varieties --- wax, crepe and wrapping! Refrigerated water coolers are nonexistent, and Italian drivers behave like maniacs.

As a tourist you may have

experienced an extreme case of inadequacy when your rusty French or your high school German fails to bring you a drink of water or direct you train track number 10. (The latter can be very disheartening when your train is leaving in two minutes and you're loaded down with cuckoo clocks, cameras, suitcases and guitar). You quickly discover that making a phone call requires a certain talent . . . how do you ask for "ein Zimmer" for the night when the poor woman at the other end of the line "sprechensie" no English and your German is equally nil? Yet, when you may want to make a fine impression on a native shopkeeper, stuttering and stumbling over a simple ques-

tion in French, how exasperating can it be to be answered in flawless English? Better yet --- how inconspicuously American are we if you need not utter one sound before an unexpected "May I help you?" spills forth.

These, then, are a few of the problems and the oddities that you may have or will encounter on a trek through Europe. Anyone can tell you that each day holds so much.

I have discovered, however, that being a resident and being a tourist are two entirely different situations, and I would like to share with you some information and some experiences that you may find interesting --- and helpful.

Couples Take Vows

Among brides at school year's end was Andrea Sue Bristol who was wed to Samuel Frank Nebel last May 21. She was a senior Pi Beta Phi from Santa Barbara, California, while Nebel was a senior Delt from Arlington, Washington.

Her sister, Terryl Lee Bristol, was maid of honor with her sorority sisters Levi Crooks and Donna Kemp and senior Delta Gamma Pam Dean among the bridesmaids. Willamette men acting as ushers were Delts, Ken Solberg, Wes and Pat Armstrong, and Steve Burdick.

The couple now live in Claremont, California, where Nebel is attending graduate school.

On May 28 Ruth Younker and Phil Marsh were married. They were both members of the class of 1966, she a Pi Beta Phi, and Marsh a member of Sigma Chi. With her sister, Mrs. Thomas Ashcraft, as matron of honor, the bride was attended by Elizabeth Griffith, Virginia Mensor and Lisa Torp. Grant

Marsh was best man for his brother and serving as ushers were James Dean, Robert Hamilton and Larry Potts.

The reception was held at the bride's sorority house with several Willamette students among those assisting. Carolyn Moore and Claudette Ebi cut the cake and Molly Gaynor, Kathy Norris and Sally Schramm also helped with the reception.

Another wedding of interest this summer was that of Jane Neville to Roger Mink in Corvallis. Ann Neville was her sister's maid of honor with Mary Watkins, Delta Gamma sorority sister of the bride, Diane Hoss, and Marcia Mink, sister of the bridegroom, as bridesmaids.

Willamette men participating in the ceremony were Jay Brack as best man and Bruce Williams as an usher. Several Willamette girls assisting with the reception were Earline Anderson, Mary Lewis, Bonnie Wilson and Linda Stewart.

Class Couples Vie For Campus Chest



Shorty Lewis and Bruce Williams



Connie Rector and Paul Cooper



Kathy Kato and Sam Pierce



Kathy Callahan and Tom Burke

Candidates from each class have been selected for this year's Campus Chest Drive competition. The drive is held to raise funds for World University Service, a worldwide organization fostering educational achievement in Latin America, Asia and Africa.

The candidates will be: Kathy Callahan and Tom Burke, freshmen, Bruce Williams and Shorty Lewis, sophomores, Connie Rector and Paul Cooper, juniors, and Kathy Kato and Sam Pierce, seniors.

"Voting" will take place in the campus living organizations

in the form of donations for each class. These donations will be put in the jars marked with the candidate's name and class.

Trophies will be awarded when the Campus Chest winners are announced during Varsity Varieties next Friday night. One trophy will be given to the organization giving the largest total donation. Other trophies will be given to the individual class winners.

Tom Angelo, Campus Chest manager, has also invited the faculty to select from their ranks two candidates to compete with the students for the closely contested title.

JOE'S Barber Shop
715 Ferry St.
Off Street Parking

Swingline PuzZleMentS

[1] Divide 30 by 1/2 and add 10. What is the answer? (Answers below)

[2] You have a TOT Stapler that staples eight 10-page reports or tacks 31 memos to a bulletin board. How old is the owner of this TOT Stapler?

This is the Swingline Tot Stapler

98¢
(including 1000 staples)
Larger size CUB Desk Stapler only \$1.49

No bigger than a pack of gum—but packs the punch of a big deal! Refills available everywhere. Unconditionally guaranteed. Made in U.S.A. Get it at any stationery, variety, book store!

Swingline® INC.
Long Island City, N.Y. 11101

ANSWERS: 1. 70 (30 divided by 1/2 with 10 added is 25). 2. Your age. "You have a TOT Stapler..." which is not a bad idea at all, by the way! Next to a note-book and a pencil, it's the handiest little school item you can own!

This job takes **GUTS**

Do you have the intestinal fortitude to go out week after week and sell businessmen an advertising medium they need to increase their sales? Are you creative to the extent you can make up an attractive advertisement? Whether you're a man or woman, there's a chance for you to dabble in the challenging, intriguing world of advertising selling. The Keizer News (Salem's only suburban weekly) needs you NOW to call on regular advertising accounts in the Keizer area. You've got to have your own wheels (but we'll buy the gas). You need time on Mondays and/or Tuesdays, plus Thursday or Friday. Pay \$2 an hour to start; if you're good, we'll talk commissions later. Want an interview? Call Mr. Zaitz at 363-1215.

A hearty welcome to Willamette parents from **THE CELLAR**

Salem's liveliest night spot
dance to the Playboys * two dance floors
pizza & beverages served
nightly 'til 2:30

located in the Senator Hotel
260 High St. Phone 585-1435

FARRELL'S ICE CREAM PARLOUR

FARRELL'S ICE CREAM PARLOUR

Candalaria Plaza - Salem, Oregon

Greeks Pledge 196 Students

One hundred ninety six students were pledged to fraternities and sororities last weekend. Six fraternities pledged a total of 110 men. Five sororities pledged 86 women.

Last year a total of 169 were pledged through deferred rush: 90 men and 79 women. The preceding year, when men were on deferred rush and women were not, 85 men were pledged and 95 women, for a total of 180.

Alpha Chi Omega -- Susan Anders and Susan Johnson, Salem; Nancy Aplan, Pamela Schriber, Jacquelyn Shivers and Patricia Weber, Portland; Nancy Stevens, Milwaukie; Christine Sleeter, Medford; Margaret Roumpf, Baker; Pamela Rice, The Dalles; Brenda Button, Parkdale; Linda Cates, Mt. Vernon, Ore.; Cathleen Callahan, Longview, Wash.; Mary Bench, Glendale, Calif.; Lynda Bockting, Los Angeles; Susan Dillow, Sunnyvale, Calif.; Bonnie Hansen and Nina Reppun, Honolulu.

Alpha Phi -- Barbara Blanchard and Marianne Kellum, Portland; Susanne Carlson and Colleen Lien, Lake Oswego; Janice Reed, Woodburn; Jenine Pancake, Pringle; Suzanne Stunz, Nyssa; Charlotte Jan Melvin, Tacoma; Theresa Ostlund, Everett, Wash.; Wendy Macleod, Inglewood, Calif.; Nancy Rea, Palos Verdes Estates, Calif.; Jean Barelman, Lewistown, Mont.; Patricia Hoffman, Denver; and Ann Stephens, Yokosuka, Japan.

Chi Omega -- Carol Ward, Salem; Karen Ahlberg, Portland; Sharilyn Gourley, Albany; Betty Hicks, Medford; Suzanne Hall, Bremerton, Wash.; Susan Hill, Raymond, Wash.; Terry Powell, Mercer Island, Wash.; Courtney Weisberg, Tacoma; Carolyn Woods, Wenatchee; Katherine Redfield, Seattle; Susan Howell, Weaverville, Calif.; Joan Lincoln, Sacramento; Linda Rogers, Hillsborough, Calif.; Sheryl Winter, Los Altos, Calif.; Judi Wallach, Boise, Idaho; Carol Miller, Davis, Calif.; and Janine Onffroy, Fairfield, Iowa.

Delta Gamma -- Carlene Kleiner and Jeanette Hansen, Portland; Laura Brossart and Alice Popp, Milwaukie; Ellen Emry, Hood River; Robin Whittle, Deborah Dean and Pamela Weeks, Seattle; Leanne Scarff, Auburn, Wash.; Laurel Ann Field, Newport Beach, Calif.; Gwen Gallaher, Richmond, Cal-

if.; Linda Sharpe, Millbrae, Calif.; Mina Van Vliet, Grass Valley, Calif.; Laani Watanabe, Rolling Hills Estate, Calif.; Julia Difani, Riverside, Calif.; Donna Handy, Twin Peaks, Calif.; Glennie Holt, Kaneohe, Hawaii; and Ann Southard, Greeley, Colo.

Pi Beta Phi -- Maria Watson, Salem; Lucinda Irvine, Cathy Welch and Mary Hadlock, Portland; Candice Barnick, Milwaukie; Teresa Krug, Ashland; Page Schwenn, Hillsboro; Linda Barto, Mercer Island, Wash.; Elizabeth Harri, Dayton, Wash.; Kathleen Akins, Santa Ana, Calif.; Janis Bacci, San Jose, Calif.; Charlane Brown, Saratoga, Calif.; Cynthia Carlson, San Mateo, Calif.; Mary Cotton, Chula Vista, Calif.; Ann Kaiser, Berkeley, Calif.; Margaret Magruder, Clatskanie, Ore.; Judy C. Moore, Los Altos, Calif.; and Karen Patch, Rome, Italy.

Beta Theta Pi -- Alan Wilson, Salem; Lester Seto and Ken Peterson, Portland; Calvin Souther, Lake Oswego; James Carter and Mart Stewart, Pendleton; Mark Mattson, Hillsboro; David Bloye, Gladstone; Jeff Weinstein, Vancouver, Wash.; David Bryson, Concord, Calif.; Mike Bennett, Los Altos; Sheldon Barker, Walnut Creek, Calif.; and Thomas Rygg, Kalispell, Mont.

Delta Tau Delta -- Michael Smith, Salem; Gregory Pierce, Rick Seaburg, Gregory Frank, and Robert Gallagher, Portland; Paul Creighton, The Dalles; Richard Howsley, Medford; Kim Logan, Condon; Warren Holmes, Vancouver, Wash.; James Bucklin, Seattle; Rodney Scott, Saratoga, Calif.; Barry McKenzie, Everta, Calif.; Edward Allis, San Marino, Calif.; Bob Boal, San Francisco; James Moore, Chico, Calif.; Sanford Kawana and Robert Swanson, Honolulu; and Jack Crawford, Glasgow, Mont.

Kappa Sigma -- Richard Synowski, Salem; Terry Collins, Timothy Collins, Robert Jones, and Bruce Vannoy, Portland; Thomas Gilbert, Beaverton; Greg Hathaway, Tillamook; William Ross Smith, Corvallis; David Taylor, Klamath Falls; Steven Wintzky, Prineville;

Jeffrey Albaugh, Richland, Wash.; Peter de Botton, Seattle; William Potts, Vancouver, Wash.; Edward Wallace, Bellevue, Wash.; George McLean, Santa Monica, Calif.; Ted Sharp, New Plymouth, Idaho; and Daniel Lotz, Bethesda, Md.

Phi Delta Theta -- John Goebel, Henry Wiens and Robert Mial, Salem; Craig Danielson, Oregon City; Chuck Loggan, Longview, Wash.; Bruce Robertson and Vince Morrison, Seattle; Robert Jerman, Richland, Wash.; Steve Rapi, Calabasas, Calif.; Roy Hartzell, San Jose, Calif.; Greg Cushman, Tulelake, Calif.; Tim Bowman, Pasadena, Calif.; Thomas Felix, Palo Alto; Alan Hull, Los Angeles; Warren Caves, Santa Ana, Calif.; Clark Omdahl, Billings, Mont.; Frank Butto, Anchorage, Alaska; and Charles Zercan, Denver, Colo.

Sigma Alpha Epsilon -- Graham Hicks and Joseph Much, Salem; David Hanselman, Kenneth Harris, David Humphrey, and James Maylie, Portland; Arthur Brooks, Madras; Eugene

(continued on page seven)

Coeds Wear Rings

Two May graduates who became engaged this summer are Kirk Ann Neil, Chi Omega, and Jay Elliott Brack, Beta Theta Pi. She is now a United Air Lines stewardess trainee and Brack plans to do graduate work.

Donna Kemp and Warren Brown were engaged this summer. She is a May graduate cum laude in political science and a member of Pi Beta Phi. She is now working as a management analyst for the Oregon Department of Finance and Administration.

Sally Bryant, a '65 graduate, was engaged to Charles Stockwell in August. A member of Delta Gamma, she now teaches at Judson Junior High in Salem.

Her fiance also attended Will-

amette and will soon serve in the Air National Guard. They plan the wedding for August, 1967.

Doug Bamford, senior Beta Theta Pi, became engaged to Kathryn Ann Williams this summer. She is a Kappa Kappa Gamma at University of Oregon.

Another senior, James Lee Ramsey, is engaged to Rebecca Jean Archer of Salem.

Gordon Humphrey, a 1963 graduate of Willamette, is engaged to Peggy Lynne Cummins of Coalinga, California. Both are studying at UCLA. She is a theater arts major working toward a secondary teaching credential while he has a master's degree in experimental psychology and is now working for his Ph.D.

1932 **MUMS for MOM** 1932

Get your Mums for Parents Weekend from the Girls of AWS Representative in your living organization.

HEATH the FLORIST

Greyhound Bus Building
Flowerphone 363-9179 456 Church NE

the KOPPER KITCHEN
Restaurants

WELCOMES
WILLAMETTE STUDENTS & PARENTS

..... Always good food
Open for breakfast, lunch,
dinner and snacks

377 Court St.
3500 Portland Road N. **OPEN 24 HOURS**

4 & 8
TRACK
AUTO
TAPES

REPRODUCED FROM
YOUR RECORDS.

Also

SEE OUR LARGE
SELECTION OF

4 & 8
TRACK TAPES

SALEM
RECORD
SHOP

428 COURT ST. NE
Phone 363-8632

GR-R-REAT FOOD!

Sambo's
PANCAKES

Banquet Facilities Available

Phone 585-6403 480 Liberty SE

IMPERIAL 400

FEW BLOCKS FROM
WILLAMETTE
UNIVERSITY

THREE BLOCKS
FROM THE
DOWNTOWN
SHOPPING AREA

Adjacent to the
all new SAMBO'S
RESTAURANT

*Singles *Doubles
*Kitchenettes
*Elevator Centrally
Located
*Telephone *Heated Pool

Greeks Pledge 196 Students

One hundred ninety six students were pledged to fraternities and sororities last weekend. Six fraternities pledged a total of 110 men. Five sororities pledged 86 women.

Last year a total of 169 were pledged through deferred rush: 90 men and 79 women. The preceding year, when men were on deferred rush and women were not, 85 men were pledged and 95 women, for a total of 180.

Alpha Chi Omega -- Susan Anders and Susan Johnson, Salem; Nancy Aplan, Pamela Schriber, Jacquelyn Shivers and Patricia Weber, Portland; Nancy Stevens, Milwaukie; Christine Sleeter, Medford; Margaret Roumpf, Baker; Pamela Rice, The Dalles; Brenda Button, Parkdale; Linda Cates, Mt. Vernon, Ore.; Cathleen Calahan, Longview, Wash.; Mary Bench, Glendale, Calif.; Lynda Bockting, Los Angeles; Susan Dillow, Sunnyvale, Calif.; Bonnie Hansen and Nina Reppun, Honolulu.

Alpha Phi -- Barbara Blanchard and Marianne Kellum, Portland; Susanne Carlson and Colleen Lien, Lake Oswego; Janice Reed, Woodburn; Jenine Pancake, Pringle; Suzanne Stunz, Nyssa; Charlotte Jan Melvin, Tacoma; Theresa Ostlund, Everett, Wash.; Wendy Macleod, Inglewood, Calif.; Nancy Rea, Palos Verdes Estates, Calif.; Jean Barelman, Lewistown, Mont.; Patricia Hoffman, Denver; and Ann Stephens, Yokosuka, Japan.

Chi Omega -- Carol Ward, Salem; Karen Ahlberg, Portland; Sharilyn Gourley, Albany; Betty Hicks, Medford; Suzanne Hall, Bremerton, Wash.; Susan Hill, Raymond, Wash.; Terry Powell, Mercer Island, Wash.; Courtney Weisberg, Tacoma; Carolyn Woods, Wenatchee; Katherine Redfield, Seattle; Susan Howell, Weaverville, Calif.; Joan Lincoln, Sacramento; Linda Rogers, Hillsborough, Calif.; Sheryl Winter, Los Altos, Calif.; Judi Wallach, Boise, Idaho; Carol Miller, Davis, Calif.; and Janine Onfroy, Fairfield, Iowa.

Delta Gamma -- Carlene Kleiner and Jeanette Hansen, Portland; Laura Brossart and Alice Popp, Milwaukie; Ellen Emry, Hood River; Robin Whittle, Deborah Dean and Pamela Weeks, Seattle; Leanne Scarff, Auburn, Wash.; Laurel Ann Field, Newport Beach, Calif.; Gwen Gallaher, Richmond, Cal-

if; Linda Sharpe, Milbrae, Calif.; Mina Van Vliet, Grass Valley, Calif.; Laani Watanabe, Rolling Hills Estate, Calif.; Julia Difani, Riverside, Calif.; Donna Handly, Twin Peaks, Calif.; Glennie Holt, Kaneohe, Hawaii; and Ann Southard, Greeley, Colo.

Pi Beta Phi -- Maria Watson, Salem; Lucinda Irvine, Cathy Welch and Mary Hadlock, Portland; Candice Barnick, Milwaukie; Teresa Krug, Ashland; Page Schwenn, Hillsboro; Linda Barto, Mercer Island, Wash.; Elizabeth Harri, Dayton, Wash.; Kathleen Akins, Santa Ana, Calif.; Janis Bacci, San Jose, Calif.; Charlane Brown, Saratoga, Calif.; Cynthia Carlson, San Mateo, Calif.; Mary Cotton, Chula Vista, Calif.; Ann Kaiser, Berkeley, Calif.; Margaret Magruder, Clatskanie, Ore.; Judy C. Moore, Los Altos, Calif.; and Karen Patch, Rome, Italy.

Beta Theta Pi -- Alan Wilson, Salem; Lester Seto and Ken Peterson, Portland; Calvin Souther, Lake Oswego; James Carter and Mart Stewart, Pendleton; Mark Mattson, Hillsboro; David Bloye, Gladstone; Jeff Weinstein, Vancouver, Wash.; David Bryson, Concord, Calif.; Mike Bennett, Los Altos; Sheldon Barker, Walnut Creek, Calif.; and Thomas Rygg, Kalspell, Mont.

Delta Tau Delta -- Michael Smith, Salem; Gregory Pierce, Rick Seaburg, Gregory Frank, and Robert Gallagher, Portland; Paul Creighton, The Dalles; Richard Howsley, Medford; Kim Logan, Condon; Warren Holmes, Vancouver, Wash.; James Bucklin, Seattle; Rodney Scott, Saratoga, Calif.; Barry McKenzie, Everta, Calif.; Edward Allis, San Marino, Calif.; Bob Boal, San Francisco; James Moore, Chico, Calif.; Sanford Kawana and Robert Swanson, Honolulu; and Jack Crawford, Glasgow, Mont.

Kappa Sigma -- Richard Synowski, Salem; Terry Collins, Timothy Collins, Robert Jones, and Bruce Vannoy, Portland; Thomas Gilbert, Beaverton; Greg Hathaway, Tillamook; William Ross Smith, Corvallis; David Taylor, Klamath Falls; Steven Wintzky, Prineville;

Jeffrey Albaugh, Richland, Wash.; Peter de Botton, Seattle; William Potts, Vancouver, Wash.; Edward Wallace, Bellevue, Wash.; George McLean, Santa Monica, Calif.; Ted Sharp, New Plymouth, Idaho; and Daniel Lotz, Bethesda, Md.

Phi Delta Theta -- John Goebel, Henry Wiens and Robert Mial, Salem; Craig Danielson, Oregon City; Chuck Loggan, Longview, Wash.; Bruce Robertson and Vince Morrison, Seattle; Robert Jerman, Richland, Wash.; Steve Rapf, Calabasas, Calif.; Roy Hartzell, San Jose, Calif.; Greg Cushman, Tulelake, Calif.; Tim Bowman, Pasadena, Calif.; Thomas Felix, Palo Alto; Alan Hull, Los Angeles; Warren Caves, Santa Ana, Calif.; Clark Omdahl, Billings, Mont.; Frank Butto, Anchorage, Alaska; and Charles Zercan, Denver, Colo.

Sigma Alpha Epsilon -- Graham Hicks and Joseph Much, Salem; David Hanselman, Kenneth Harris, David Humphrey, and James Maylie, Portland; Arthur Brooks, Madras; Eugene

(continued on page seven)

Coeds Wear Rings

Two May graduates who became engaged this summer are Kirk Ann Neil, Chi Omega, and Jay Elliott Brack, Beta Theta Pi. She is now a United Air Lines stewardess trainee and Brack plans to do graduate work.

Donna Kemp and Warren Brown also were engaged this summer. She is a May graduate cum laude in political science and a member of Pi Beta Phi. She is now working as a management analyst for the Oregon Department of Finance and Administration.

Sally Bryant, a '65 graduate, was engaged to Charles Stockwell in August. A member of Delta Gamma, she now teaches at Judson Junior High in Salem.

Her fiance also attended Will-

amette and will soon serve in the Air National Guard. They plan the wedding for August, 1967.

Doug Bamford, senior Beta Theta Pi, became engaged to Kathryn Ann Williams this summer. She is a Kappa Kappa Gamma at University of Oregon.

Another senior, James Lee Ramsey, is engaged to Rebecca Jean Archer of Salem.

Gordon Humphrey, a 1963 graduate of Willamette, is engaged to Peggy Lynne Cummins of Coalinga, California. Both are studying at UCLA. She is a theater arts major working toward a secondary teaching credential while he has a master's degree in experimental psychology and is now working for his Ph.D.

1932 **MUMS for MOM** 1932

Get your Mums for Parents Weekend from the Girls of AWS Representative in your living organization.

HEATH the FLORIST

Greyhound Bus Building

Flowerfone 363-9179 456 Church NE

the KOPPER KITCHEN

Restaurants

WELCOMES
WILLAMETTE STUDENTS & PARENTS

..... Always good food

Open for breakfast, lunch,
dinner and snacks

377 Court St.
3500 Portland Road N. OPEN 24 HOURS

4 & 8

TRACK AUTO TAPES

REPRODUCED FROM
YOUR RECORDS.

— Also —


SEE OUR LARGE
SELECTION OF

4 & 8

TRACK TAPES

SALEM RECORD SHOP

428 COURT ST. NE
Phone 363-8632



GR-R-REAT FOOD!

Sambo's

PANCAKES

Banquet Facilities Available

Phone 585-6403
480 Liberty SE


IMPERIAL 400

FEW BLOCKS FROM
WILLAMETTE
UNIVERSITY

THREE BLOCKS
FROM THE
DOWNTOWN
SHOPPING AREA

Adjacent to the
all new SAMBO'S
RESTAURANT

- *Singles *Doubles
- *Kitchenettes
- *Elevator Centrally
Located
- *Telephone *Heated Pool



In The Stacks...

By JOE TRACKTENBURG and JIM FITZPATRICK

People are starving in Asia, the student center is overcrowded, and allowances are depleted . . . in the light of these troubled times, is a well-stacked library truly a necessity? To fully analyze the issues involved and arrive at the crux of the problem, your two intrepid reporters went straight to the source.

After bursting our way through myriads of red tape, we finally secured a succinct and profitable interview with Dr. George Stanberry, University Librarian.

We were informed that the new wing, to be completed by Christmas Vacation, will cost \$600,000 and contain four floors of stacks literally tripling present capacity. Also to be included in the new structure will be a vault scientifically constructed to house the University literary treasures against the ravages of time and greasy fingers. Included in this collection are such priceless volumes as a First Edition Samuel Johnson Dictionary, the Complete Works of William Shakespeare - 1606, 15th century editions of Greek and German bibles, as well as an extensive collection of manuscripts and memorabilia on the westward expansion and settlement of Oregon. The vault will also house the only complete files of the now defunct PACIFIC CHRISTIAN ADVOCATE, the voice of the early Pacific Methodist Church. According to Dr. Stanberry, "It is invaluable as a reference source on the settlement of the Pacific Northwest."

Dr. Stanberry eagerly pointed out that aside from the 106,000 volume collection in the main

library, other collections available to all students include the seven thousand album collection of phono disks in the Music Library, and all facilities of the Science and Law Libraries.

In order to maintain an up-to-date collection, the University Libraries purchase 4,500 to 5,500 new volumes annually. To help defray the outrageous costs involved, the University has received a \$5,000 grant, rumored to have been skinned from remaining '64 G.O.P. presidential campaign funds.

At this point, your two budding reporters were ushered to the door rather unceremoniously, by then firm in the conviction . . . that although all this will indeed prove a tremendous asset to our library . . . people are still starving in Asia!

WU Senior Ambitious, Opens Strange

A new business has entered the competition in the peaceful coastal resort town of Seaside.

The newly opened No-tel Motel is owned by Willamette senior Bob Ladum. Vacant for two years, the structure was renovated within two weeks by Bob and his crew of "winos". (The "winovaters" came from Portland's skid row located on Second and Burnside. They were always good for at least one day's hard work at a time.)

The No-tel Motel has many conspicuous characteristics: the highest neon sign in town, an exterior color of passionate red (with that just stopped-over look), and a Gideon Bible in each room just in case any of the guests get any ideas.

A Challenge Of New Ideas

By MARY LOU TIMME

The challenge of new ideas is an important aspect of college life. These ideas bridge the areas of philosophy, literature, politics, science, sociology, ethics, and religion. The function of Campus Koinonia is the discussion and evaluation of various religious ideas and practices in our society.

Campus Koinonia was founded last year, under the name of Campus Christian Community, as "the ecumenical expression of the church on campus." It included members of the various religious organizations on campus.

Campus Koinonia has become an interdenominational group.

For example, the worship services are usually short and represent the various types of contemporary worship that can be conducted.

The purpose of Campus Koinonia is many-fold. On a personal level, it seeks to provide the opportunity for individual religious evaluation and growth,

and to stimulate thought concerning religion, the church, religious values in living, and the needs of society and the individual in order to approach

the ultimate values that man seeks to discover.

In the coming weeks students will present background lectures on the views of Julian Huxley, Teilhard de Chardin, Karl Marx, Sigmund Freud, Soren Kierkegaard, Martin Buber, and Reinhold Niebuhr.

The lectures will be followed by student discussion groups emphasizing the questions, What is wrong with man? What is human fulfillment? and What is the way to human fulfillment?

UNIVERSITY BRIDGE with Larry Cohen 1966 Intercollegiate Champion

The lesson today is obvious -- Silence can be golden! Note also the terms we casually toss out: "Blackwood response, ruff, strip, and unblocking." You'll need to be familiar with these and many, many more in intercollegiate competition.

East was punished for his unnecessary double in round three of today's bidding.

Dir: N North (11-17)
Vul: NS
♠ AQ
♥ K107
♦ AJ1054
♣ A73

West East
♠ 95 ♠ KJ864
♥ J982 ♥ Q53
♦ 72 ♦ 86
♣ J6542 ♣ Q109

South
♠ 10732
♥ A64
♦ KQ93
♣ K8

North	East	South	West
INT	Pass	2D*	Pass
3D	Pass	4NT**	Pass
5S	Dbl.	6D	Pass
Pass	Pass		

* Forcing Stayman
** Blackwood

Opening Lead: Spade 9

North's 3D response shows a five card suit and denies a four card major. South decides to play in 6D if the partnership holds all the aces or to stop

at 5NT if one ace is missing. East's double of the ace-showing Blackwood response provides the key to making the hand.

Now suspecting the spade situation, declarer rises with the ace at trick one. Two rounds of trump are followed by the king, ace and a club ruff. A small spade lead, won by the king, leaves East helpless!

If East leads a small spade, declarer wins the 10 and discards a heart; if he leads the jack, declarer's 10 is established. (East actually led a small heart to the jack and king. The heart queen exit is better, making declarer guess the jack.)

Declarer now runs the remaining trump, squeezing East in spades and hearts.

Normal play, without the double and spade opening lead, is to strip clubs and try to end play East with the last heart. East can avoid this by unblocking the heart queen and the hand is set one.

Next: Why Finesse?
Send your bridge questions to: Box 1521, Madison, Wis. 53701, for a personal reply.

UNIVERSITY DRUGS

ON STATE STREET

Prescriptions - Magazines
and Cosmetics

RUSS POWELL
Your Friendly Pharmacist

Sundries and Soda Fountain

a tip from Wieder's
READY FOR PARENTS' WEEKEND?

If your slacks, coat, or dress need to be in the best of shape, let Wieder's dry clean them for you. And if time is short . . . bring them in by ten and we'll have them ready at five. This service available Monday through Friday.

Wieder's

SALEM LAUNDRY COMPANY

263 HIGH ST. S.E. PHONE 363-9125

Collegian Classified

IMPORTANT -- Please contact Larry Seguin about an accident that happened on Sept. 2 about 1 or 1:30 p.m. Two students approached me to be witnesses to the accident. I didn't get their names. Would they please call me or my agent, Larry Seguin 362-1148 or agent Vern Cox 585-1464.

WANTED BY RECORD CLUB OF AMERICA
CAMPUS REPRESENTATIVE TO EARN OVER \$100 IN SHORT TIME

Write for information to: Mr. Ed Benovy, College Bureau Manager, Record Club of America, 1285 E. Princess Street, York, Pennsylvania 17405.

HIGH INCOME JOBS ON CAMPUS
Get a high paying job in sales, distribution or market research right on your own campus. Become a campus representative for over forty magazines, American Airlines, Operation Match, etc., and earn big part-time money doing interesting work. Apply right away! Collegiate Marketing, Dept. H, 27 E. 22 St., New York, N.Y. 10010.

BROASTER RESTAURANTS

"Worlds Finest Eatn' Chicken"

Leslie & 12th SE
Phone 362-9711

SNOOKER POOL

the Cueball is growing

SOON: Foosball, Shuffle Board

1262 State Street

EVERY WEDNESDAY

All the BUTTERMILK PANCAKES
you can eat and COFFEE

59¢

5 P.M. TO 9 P.M.

PANCAKE CORNER

354 MARION NE "In Payless"

WELCOME ALUMS

SUBSCRIPTIONS to the COLLEGIAN

Published Weekly
Costs Only \$3. per Year

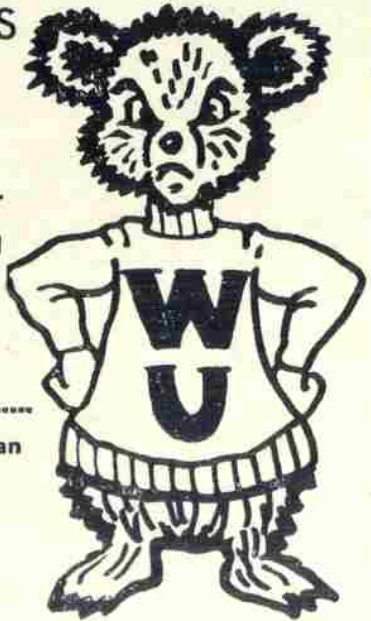
Please Return Coupon and Check to:
Willamette Collegian
Willamette University
Salem, Oregon 97301

Please Send the WU Collegian For

_____ 1 Year

_____ 2 Years

To (Please print)



Two Travel To Points East

By LYNNE NORTON

Willamette University students Steve Burdick and Larry Hillhouse started off from Salem on May 24 with \$5.00 in cash and a full tank of gas in their panel truck to see the U.S.A. Three months later, having circled the country Steve returned to Salem and Larry to his home in Palo Alto.

San Francisco was their first stop. There they worked in a warehouse for two weeks before moving on to San Diego where they were janitors for a week.

From San Diego the boys visited La Jolla's beach where Larry caught a shark skin-diving. Steve and Larry left California, stopping at Lake Mead, Zion National Park, The Grand Canyon, Flagstaff, and the Gulf of Mexico.

Houston was their next stop and then one of the trip's highlights, New Orleans. Here they worked for a week loading box cars with fiber glass insulation.

NEW ORLEANS "BEST"

They rated New Orleans "best for night life." Larry wrote in the trip's log: "Bourbon Street has good food, dirty sex, wild togetherness, and quiet charming atmosphere all tied up in a few blocks . . . the silence of a bearded artist on the street corner . . . the taste of a \$1.50 bourbon with 20 minutes of dixieland jazz attached; the artistic beauty and peacefulness of the St. Louis Cathedral; the horse with the flowered hat pulling the buggy with the sleepy Negro driver; and mostly the music --- either

rock and roll, swingin' dixieland or walling blues --- which never stops."

From New Orleans they drove through Alabama and Mississippi to Florida. They stopped in Miami Beach which Steve commented "is like the sacred valley in the Tarzan movies where all the old elephants go to die." Quickly leaving the "sacred valley" the boys devoted the next five days to diving off of Key Largo.

WHERE THE KIDS ARE

If Miami was full of old people, their next stops at Ft. Lauderdale and Daytona Beach were "full of kids. Everyone was between the ages of 16 and 24. And this was the off season," they marvel.

Steve and Larry drove up the coast to Chapel Hill, N.C. near Duke University where they stayed for five days in "the most interesting and entertaining house I've ever been in" records the log. This house belongs to a Delt alum who opens his home to the Duke Delts. "Of all the people we've met this summer (their host) Charley's the personality who stands out the most."

Washington, D.C., Baltimore, and York, Pa., were next on their itinerary. In York Larry worked scrubbing walls at the YMCA while Steve hitched home to Port Huron, Mich.

LARRY IN NEW YORK

After York, Larry stopped in Atlantic City, Princeton, New York City, Scarsdale and Ithica. At Buffalo he crossed into Canada driving directly to Steve's home in Port Huron, Mich.

There they painted Steve's house. Denver was their next stop after 2 1/2 days of straight driving. In Denver they visited W.U. students Clint Johnstone and Bart White.

From Denver they traveled to Salt Lake City where they separated again. Steve hitched back to Salem and Larry drove home to Palo Alto, stopping overnight at Dave Good's cabin on Lake Tahoe.

13,000 MILES

In three months Steve and Larry traveled over 13,000 miles in their "Black Maria." Their initial investment of the



STEVE BURDICK AND LARRY HILLHOUSE ride the "Black Maria" once more after spending a summer on the road. (Photo by Bob Hamel)

panel truck was \$75.00 They equipped it with a Coleman stove and lantern, a twenty-two, one duffle bag each, and a sleeping bag each. The trip cost \$800, including \$6.24, the total cost of repairs. They began with \$5.00 and earned the rest in various jobs which added up to about six hours of working time.

ially in the night life category. The beautiful countryside award goes to N.C. and VA.; best beach, La Jolla; worst drivers, L.A.,

Larry "would do it again in a second." But Steve is "tired of being a bum" although he would recommend the experience to others. "We learned how vast, rich, and powerful our nation is and how much it means to us," concludes Steve.

New Orleans wins the prize as their favorite city, espec-

(continued from page five)

Helicker, Heppner; Dennis Nolan, Redmond; Douglas Roberts, Brookings; Robert Watkins, Lake Oswego; Jerry Willard, Woodburn; Charles Bennett, Spokane; Michael Sherman, Vancouver, Wash.; Wilfred Bennett, Sunnyside, Calif.; Ted Fritts, Hillsborough, Calif.; Leland Johnson, Atherton, Calif.; Richard Osborne, Palo Alto, Calif.; James Baldwin, Tucson, Ariz.; Demetrio Gamponia, Wailuku, Hawaii; William McFetridge, Calgary, Alberta, Canada; Thomas Robinson, Arlington, Va.; and Samuel Fitzpatrick, Kanegawa-Ken, Japan.

Sigma Chi -- Niles Kapuniai, Salem; John Gordon and Ian Dunlap, Portland; Jon Syd Jones, Seaside; Stan Tenold and Michael Brice, The Dalles; Donald Haines and Craig Mackie, Lake Oswego; Kerry McClelland, Forest Grove; Daniel Stiffler, Grants Pass; Jon Hayner, North Bend; Richard Meeder, Hoquiam; Robert Pearson, Tacoma; William H. Minkner, San Mateo, Calif.; Thomas R. Burke, Gary Hull and Steve Gerrish, Palo Alto, Calif.; Charles Ed Miller, Davis, Calif.; Robert Puckett, Arcadia, Calif.; and Jeffrey Olseth, Baltimore, Md.

HOLLYWOOD

DOORS OPEN 6:45 P.M.
Paul Newman
"HARPER"
★ 2 Color Hits ★
"NEVER TOO LATE"
Connie Stevens
2005 Capitol St. NE • 364-4713

EL SINORE

DOORS OPEN 6:45 P.M.
2nd Big Week
"WHO'S AFRAID OF VIRGINIA WOOLF"
Elizabeth Taylor
Richard Burton
★ Parsons under 18 must be with their parents
News & Color Cartoon
Salem's Largest and Finest • 363-5798

CAPITOL

DOORS OPEN 6:45 P.M.
FRANK SINATRA
VIRNA LISA
"ASSAULT ON A QUEEN"
★ 2 Color Hits ★
"JOHNNY TIGER"
Robert Taylor
FREE PARKING AT HANK'S AFTER 6 P.M. - ALL DAY SUN. • 363-5050

North Salem DRIVE-IN

Gates 7:00 ★ Show Dusk
FRI. - SAT. - SUN.
Elizabeth Taylor
Richard Burton
"THE SANDPIPER"
★ 2 Color Hits ★
"YELLOW ROLLS-ROYCE"
Ingrid Bergman
Rex Harrison
Children under 12 FREE • 362-7823

Rand makes them ... but you've made them classics!

If there are All-American college classics in men's shoes, they include the styles you're looking at: the long-wing brogue, from \$16-\$25, and the handsewn-vamp TRUJUNS, from \$15-\$18. A wardrobe without them is hardly a wardrobe, especially on campus. (Take it from RAND!)

RAND

WEIBY'S DEPT. STORE
Silverton, Oregon

MILLERS DEPT. STORE
(P.N. Hirsch Co.)
McMinnville, Oregon

WEIBY'S SHOE STORE
Hood River, Oregon

INTERNATIONAL SHOE COMPANY. ST. LOUIS

15 | 15 | 15 | 5 | 5 | 5 | 5 | 5 | 5 | 5 | 5 | 5 | 5 | 5 | 5

MEAL TICKET
\$5.50 in Trade for \$5.00

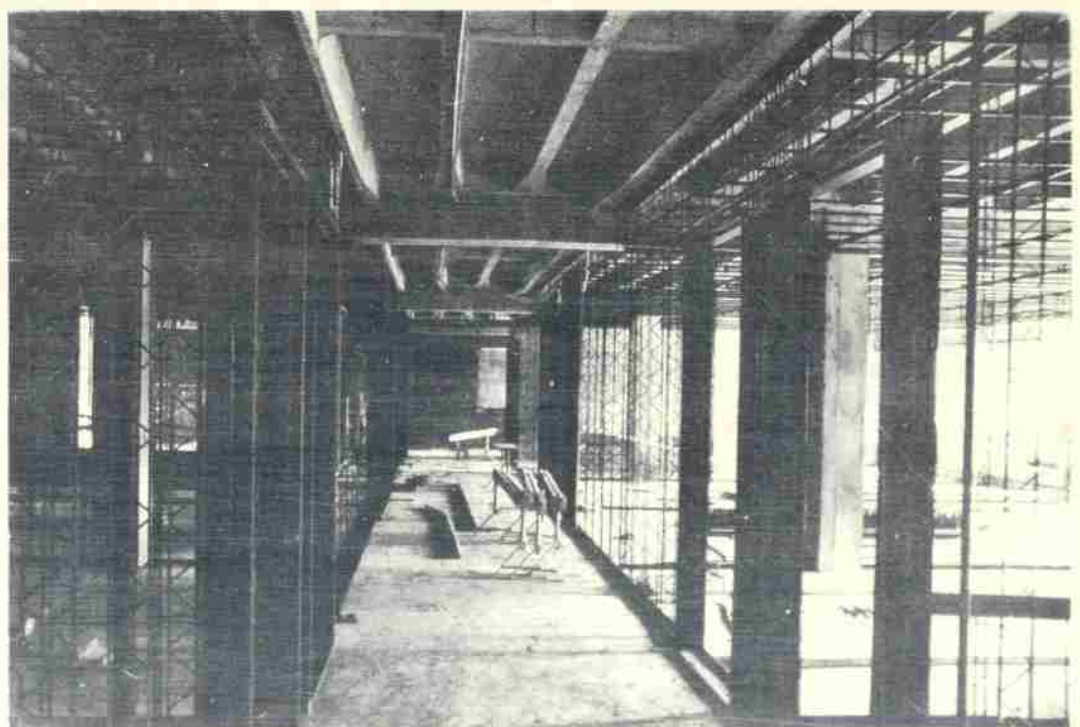
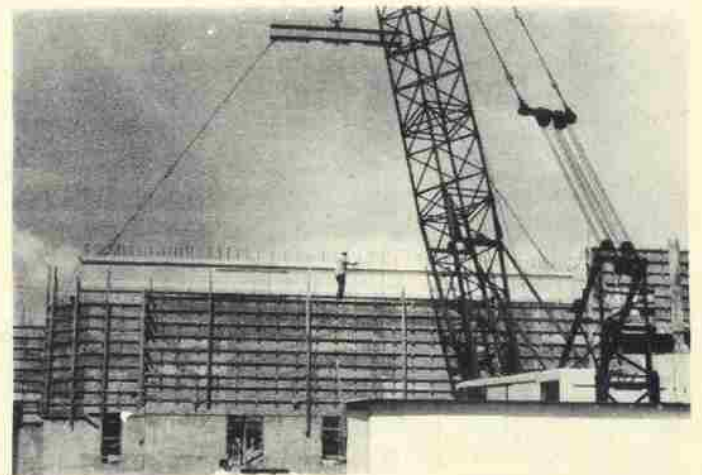
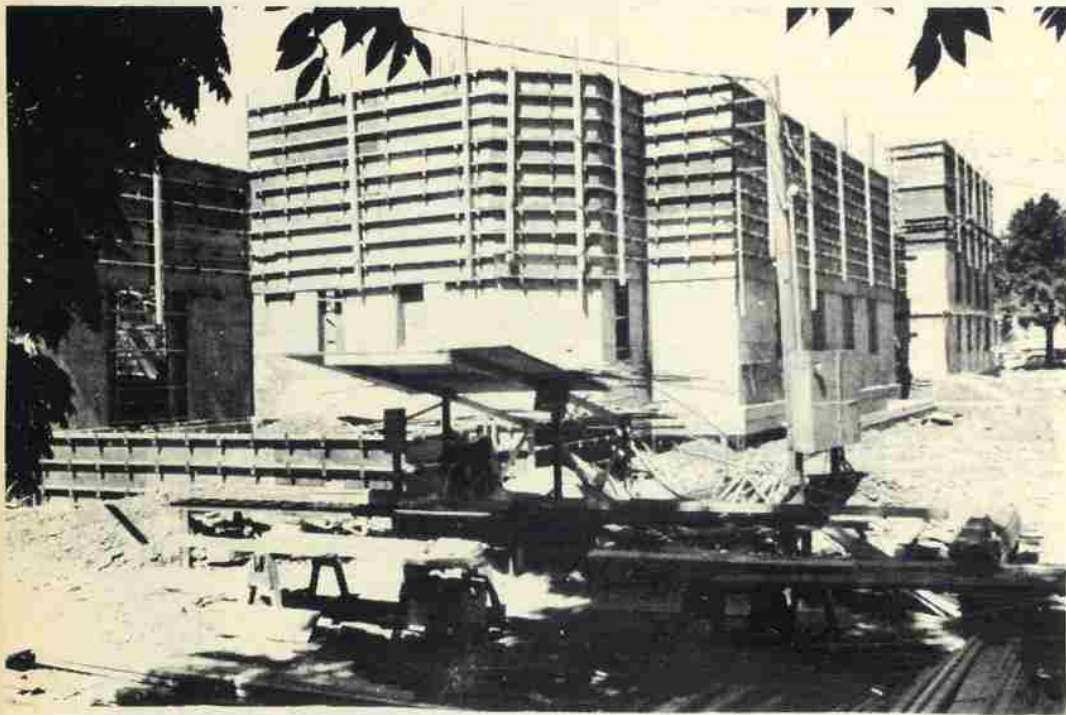
Fireside A & W
Twelfth & State Sts. Salem

INVEST YOUR DOLLARS WISELY

25 | 25 | 25 | 25 | 25 | 25 | 25 | 25 | 25 | 25 | 25 | 25 | 25 | 25 | 25

**Welcome Willamette Parents
from FIRESIDE A & W**

The Continuing Construction...



A Photo Essay

by Bob Hamel



MUN Rejuvenates For Year

By CHARLOTTE LANGFORD

Willamette's Model United Nations delegation is rousing itself for another year of activities. With these activities will come major changes in the scope and nature of the campus group. The delegation will officially begin work next Tuesday at 6:30 p.m. with an organizational meeting in Waller Hall auditorium.

While ostensibly preparing for the Western States Collegiate convention which will be held at Lewis and Clark College of Portland next spring, the Willamette students will conduct more community- and campus- activities than in former years. This will include outside speakers, student prepared discussions, and possibly an on campus model session. These activities will be initiated at the same time as the research and discussion part of the preparation for the conven-

tion is being carried on.

The first on-campus program to be sponsored by the MUN this year will be at convocation on October 11. The delegation is bringing Dr. Karlin Capper-Johnson of Lewis and Clark to speak about the United Nations. Dr. Capper-Johnson, the head of the International Relations department at Lewis and Clark, is active in the Oregon chapter of the United Nations Association.

He is a familiar figure around the western collegiate MUN. He has been attending the annual conventions and advising delegations since the first MUN 16 years ago. The Willamette delegation feels that by bringing him to the campus students will have a better understanding of the scope of the United Nations and will take an interest in the less publicized works of the UN. The Lewis and Clark delegation is working under the direction of Dr. Capper-Johnson in planning for the 1967 Model United Nations meeting.

Since country assignments will not be determined until September 30, the time prior to that date will be used in general

familiarization with the UN, MUN, and structuring of the delegation. Glen Gibbons, delegation chairman, emphasized "we are trying to widen the scope of interest of the Willamette group. We hope that students who are interested will be able to participate more in our activities, even though they may not have the time to prepare as some of the delegates who will represent us at Lewis and Clark. By having many on campus activities more students can participate, and the more interested students with more time will be able to find help in preparing as delegates. We also hope to take large groups of observers, if only for a day, to the Lewis and Clark convention."

The delegation, with Dr. Kenneth Smith of the political science department as advisor, is headed by chairman Glen Gibbons and vice-chairman Charlotte Langford. Those students interested in Willamette's Model United Nations program and knowing more about it should attend the September 27 meeting.

SB Office Staff Offers Services

"Let us do your work for you" invites the WU Student Body Office staff. Nine girls working Monday through Friday from nine a.m. to four p.m. offer a multitude of services to either individuals or group organizations.

Workers may be employed to type term papers, law outlines, letters, applications, programs or tickets. Term papers are priced at twenty-five cents per page or by the hour, whichever is less. The hourly rate is one dollar, with seventy-five cents for forty-five minutes, fifty cents for half an hour, or twenty-five cents for fifteen minutes.

Papers may be mimeographed and stenciled or a Xerox machine put to use. There is a minimum charge of fifty cents for any mimeographing service.

Tickets to the Distinguished Artists Series, the Foreign Film Series and All Campus Special Events are sold through this office which is located in the basement of Wallter Hall. Publications such as Fusers Guides, Alotadatas, Collegians and Wallulahs may also be obtained there.

Arrangements for the use of the Student Center Conference Room are likewise handled through the SB office. Anyone wishing to display a message on the sign board located by the walk behind Waller is urged to contact Peggy Shaffer, office manager, for details.

Speech Squad Tournies Set

The Willamette University Speech Squad, consisting of twenty members, is scheduled to participate in five tournaments this coming year. The Squad will travel to the following colleges: Pacific University -- Friday, Saturday, (Oct. 21,22); Practice Tournament, Lewis and Clark College -- Fri., Sat., (Oct. 28,29); lege -- Friday, Saturday, (Oct. 28, 29); Centralia Junior College -- Friday, Saturday, (Nov. 4, 5); University of Oregon -- Friday, Saturday (Nov. 11, 12); University of Washington -- Thursday, Friday, Saturday, (Nov. 24-26). Participation will be in the areas of Debate, Oratory, Extemp, Impromptu, and Humorous and Serious Interpretive Reading.

The Speech Squad is meeting with Dr. Runkel every Tuesday at 3 p.m. to prepare for these trips.

WIT'S Pick Head

Kelli Haynes is the new president of WITS, Willamette Independent Town students. Other officers elected last Thursday are Marie Francis, publicity vice president; Deni Munkres, social vice president; Sue Delashmutt, secretary; Sonda Carroll, treasurer; and Eva Markiw, campus affairs officer.

New members were welcomed and the need for a new faculty advisor was discussed. A Halloween party and fund raising ideas will be on the agenda at the next meeting.

All independent town students are welcome to come. The meeting will be next Thursday at 11 a.m. with the location to be posted on the Student Center bulletin board.

Welcome Parents!

FOR YOUR PICTURE-TAKING THIS WEEKEND


drop in one of our shops for the finest in

CAMERAS, FILM and FINISHING

KLASIC Camera Shop

1146 Center NE 546 State

"Cleaned right and pressed right by Burright's"



198 Church St. SE

WELCOME WILLAMETTE STUDENTS

Phone 363-4242

For the BEST in HAIRCUTS try BEN'S

Opposite SENATOR HOTEL

DOWNTOWN MOTEL

495 Liberty St. SE
Salem 363-1677

Get Your Flu Shots!

Flu shots are now available at the Health Center. The cost is one dollar each. Those who have taken a series before need only one booster, but those who have not had flu shots need two a month apart.

RICKSHAW

3560 PORTLAND ROAD N.

DRIVE-INS RESTAURANTS

Chinese & American dinners

The King's Klozet

for your campus clothes

*** FORMAL WEAR RENTAL ***

115 Liberty NE

College Students **Auto Insurance**

Drop in and talk to Tom Brown at the Willamette Ins. Agency Inc. 647 High St. NE, 362-3617



- Corsages
- Funeral Sprays
- Potted Plants
- Bedding Plants
- Wedding Arrangements

"FLOWERS FOR ALL OCCASIONS"



PEMBERTON'S Flower Shop


Office Phone 362-9946
Night 364-0392 - 362-8338

2414 12th S.E., Salem

CITY CENTER MOTEL

510 Liberty St. SE Salem Phone 364-0121

AAA



Luxury at economy prices

- * Quiet Units Away From Traffic Noise
- * Electrically Heated
- * Air Conditioned
- * Direct Dial Telephones
- * Restaurant Adjacent
- * Walking Distance to Campus and Business District

WELCOME TO CITY CENTER MOTEL DURING PARENTS' WEEKEND

Nevada Invades Bearcats' Lair

University of Nevada ventures out of the security of its own Far Western Conference tomorrow afternoon for an interconference game here. The Wolf Pack lost three games last season and two of them were interconference clashes.

Willamette won last year's encounter 9-6, but many Bearcats still feel Nevada, the state if not the school, came out ahead. This may be their chance to even up something more than the score (Do you think we could legalize one-armed bandits here for about an hour, coach?).

Seriously, the 1965 Nevada was quite strong as it won six of its last seven games to finish second in its conference. They are picked as a title contender this season, too, primarily on the basis of 22 returning lettermen. Included among these returnees is the entire offensive backfield of quarterback Chris Ault, flanker Art Boyer and runningbacks Joe Soback and Earl Nursement. Nursement scored Nevada's only touchdown in the last game.

The linebackers will be experienced as Doug Carder (205), Mike Sala (195), and Ron Regan (190) all return. However, the defensive secondary may be weaker, and this appears to be the area upon which Willamette places the most pressure.

Head Coach Dick Trachok has his team run primarily out of a T formation behind such line stalwarts as Ron Moor (230), Tony Betita (225), and Gerald Troy (230).

The Bearcats will be looking to increase their winning record from the impressive 4 wins against one loss which now stands. In these five games Nevada has yet to score more than a single touchdown, although they were able to come up with 9 points back in 1936.

Hopefully, Willamette will show the stronger rushing game it has potentially and a more consistent passing game. The Bearcats were able, at times, to move both in the air and on the ground. However, interceptions, incompletes, or fumbles at key points came too often for great success.

Rod Allison and Spike Moore were both effective as pass receivers as their records show (Allison 4 passes for 72 yards, Moore 2 passes for 83 yards). Other notable standouts included Walt Looney on both offense and defense and newcomer Cal Lee at linebacker.

One more area which gained considerable attention during the last week was the Bearcat's inability to move within the opponent's 10 yard line. Coach Ogdahl may have counseled his troops on the advisability of going around or over the enemy's massed forces but certainly has remedied the problem for tomorrow's encounter at 2:00.

APPLICATIONS DUE

All applicants for internships in the political science department should return their applications to Dr. Shay as soon as possible.

The Sky's The Limit

For Parents at Game

The halftime for the Parents' Weekend game on Sept. 24, with College of Idaho may be as action-packed as the game itself.

In addition to the band, one of the newest innovations of skydiving will be demonstrated. It's called "tracking," which is a tame word for fireballing through the air in free fall at 220 miles per hour with a forward speed of up to 90 miles an hour over the ground.

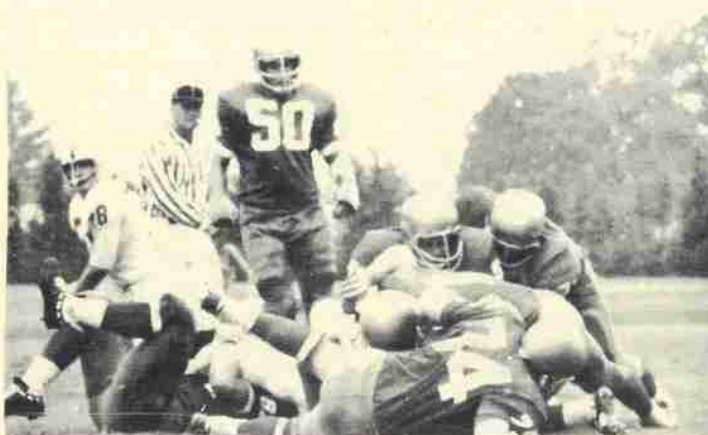
Ted Mayfield, president of the Portland Parachute Club, and his partner, Chet Lundberg, who recently won the team championship in the first competition of this event at the International Aero Classic, will be joined by Phil Olsen of Salem.

"The idea," according to Mayfield, "is to streamline your body and dive straight down from 10,500 feet to a terminal velocity of about 220 miles per hour. Then you tuck forward in a bent over position. This creates an airfoil like the wing of an airplane with reduced differential pressure on your back which shoots you forward at up to 90 miles an hour."

The trio will carry smoke flares to allow them to be seen more easily. Their aerial maneuvers will include: turns, back loops, barrel rolls, hook-ups and tracking. Mayfield and Lundberg, the more experienced of the three, have over 500 jumps to their credit. The goal for landing will be a small circle in the middle of the football field.



ACCURACY LANDING finds Mayfield hitting squarely on 18-inch target in desert while judges measure distance in centimeters, during earlier meet at Las Vegas.



OK, Fellas. Nap time's over.

(Photo by Grant Sharp)

Coyotes Prime For Parents' Weekend

Saturday, October 1, of Parents' Weekend is the date for the Willamette-College of Idaho game. The Caldwell Coyotes invade Bearcat territory trying to break a losing streak that stretches back to 1961, the date of the last Coyote victory against Willamette.

Head Coach Ed Bonaminio, a second year man, spent last year building, as his squad managed only two wins. One, however, was the last of the season against always tough Lewis and Clark.

As a result of last year's patience by Bonaminio, Idaho has one of the most experienced teams in its history with 24 returning lettermen. The offensive line promised to be particularly challenging with all-conference tackle Dick Noryna (258) and guard Steve Smith (230) leading the way. Ron

Sproat, an all-conference line backer, heads a solid defensive secondary composed of veterans Jim Coverley, Cisco Garcia, Ed Sturza, and Rick Candea.

Ron Washington is the top returning runner and averaged 5.1 yards a carry last season. At the helm will be two experienced quarterbacks in Ron McNutt and Ron Boyd. The Coyote's weak point appears to be at end where five seniors held sway last year.

Walt Maze and Bruce Anderson were the only scorers in last year's shutout of C of I, and they were both seniors. Ted Ogdahl-coached teams have made a habit of beating the Coyotes as they hold a 9-5 edge while delving still further into past history reveals a 22-10-1 Bearcat edge. However, this may be a "catch-up" year for

the "much-improved" Coyotes if the Bearcats aren't up for the game.

RANDALL'S
Chuck Wagon

THE FINEST IN
BUFFET DINING

3170 Commercial SE
Pho. 364-7875

QUISENBERRY
PHARMACIES

150 Liberty SE

OPEN TILL 11 P.M.
Nightly
Mon. thru Sat.

RENT a new **PORTABLE**
TYPEWRITER Only \$5.00
INITIAL RENTAL WILL APPLY TOWARD PURCHASE Per Month

Kay TYPEWRITER CO.
429 Court St. NE - 585-4024
lowest prices - easiest terms in town

Holiday Inn®

745 Commercial SE
363-2451

FOR YOUR COMFORT,
CONVENIENCE AND ENJOYMENT
THE NATION'S INNKEEPER OFFERS YOU:

- Free Television in every room
- Year-round air conditioning
- Free airport transportation
- Swimming pool
- Free Holidex reservations
- Telephone in every room
- Meeting facilities for all occasions
- Bonded baby sitters
- House physicians
- Children under 12 free (when using the same facilities with parents)
- Baby beds
- Valet and laundry service
- Wall-to-wall carpeting
- All-tile baths
- Coffee Shop
- Cocktail lounge
- Dining room

COLLEGIAN SPORTS

Strengths Reviewed; Prediction Made

By AL GOULD
Collegian Sports Editor

The first game of the grid season is history, and most Bearcat rooters (including one embarrassed forecaster --- ouch!) wish it was still somewhere in the future.

Willamette showed strength in most of the predicted areas, but were weak in others. The defensive line and particularly the tackles were lacking in last week's encounter. This apparent lack was due in part to fine play by Roger Bergh (228) and Rolf Oxos of EWC but definitely needs improvement.

Passing, while strong in one way (223 yards gained, ITD) was woefully weak in another (5 interceptions, ITD). Hopefully, this situation will correct itself after a game to work out patterns and timing.

Ogdahl, on play of frosh guard Dave Woster . . . "he may have done some things wrong, but he did 'em hard . . ."

PREDICTED OUTCOME: WU 24-14

. . . the Wolf Pack has its entire offensive backfield returning but will be hard pressed to cope with WU passing attack . . . look for more Bearcat punch within the 10 yard line.



WHAT MAY LOOK like a practice for a ballet is in actuality an intermural football game between Kappa Sigma and Belknap Hall. Belknap won the encounter, blanking the Kappa Sigs 18 - 0. (Photo by Bob Hamel)

Points Accumulate As Intermurals Open

The year's intermural program began this week with a schedule including flag football and tennis.

As in the past, points will be awarded for participation as well as winning. The general rule is: 5 points for a loss, 15 points for a win and nothing for a forfeit. The teams are usually divided into leagues

which then play off with each other for the championship. At the end of the year, the house with the highest total is crowned the Intermural Champion. In recent years, this has been Phi Delta Theta. The Phi's have already started the defense of their crown as this week's football games resulted in the following score: Phi Deltis 26, Betas 7

Conflicts Harry Bearcat Harriers

Slighted Spikers in the cross country story included: Jim Price and Dave Gregonis.

Practices are still going strong for the harriers but complications have already beset the runners. Veterans Fred Mueller and Pat Armstrong both have labs conflicting with the scheduled work outs. They arrange alternates, but this leaves Coach Bowles with the problem of "never" seeing half of his returning lettermen.

"The problems were reduced at our test run last Saturday. However, it's still difficult to tell very much," Bowles observed.

Bowles has scheduled a team race during the half of tomorrow's game.

This year's meets include: Sept. 24, 2 mile (team race) Salem; Oct. 8 OCE and SWOCC Salem; Oct. 15, Lewis & Clark Portland; Oct. 22, Whitman Salem; Oct. 29, 3 mile (team

For Want Of A Nail,

a kingdom was lost; for want of a yard, a game was lost.

With 35 seconds to play in last week's encounter with Eastern Washington, Willamette trailed, 26-18. However, with a total of one more carefully placed yard gained the Bearcats would have led 30-26.

Eastern Washington struck quickly as the Savages drove 86 yards in 9 plays off the opening kickoff. Don Strate, a 205 pound fullback, was the big gun of the attack as he gained 61 yards on two off-tackle plays, but the score came on a 60 yard pass to Dave Svendsen from quarterback George Cross. Wayne Wilson kicked the



MIKE SHINN takes to the air himself to pass over two hefty Savage linemen in last Saturday's contest. (Photo by Pete Morrow)

'Cat Stats

RUSHING	Carries	Yards	Avg.
Nicholson	20	50	2.5
Lau	10	31	3.1
Allison	3	9	3.0

PASSING	PA	PC	Yds.	TD
Shinn	25	10	223	3

RECEIVING	Passes	Yds.	TD
Allison	4	72	1
Moore	2	83	1
Nicholson	2	22	0

PUNTING	No.	Yds.	Avg.
Nicholson	5	128	25.6

PAT, to give EWC a 7-0 jump.

Willamette came back quickly as two Mike Shinn passes netted 57 yards to the Savage 5 yard line. From here, four running plays made only four and a half yards. EWC ran three plays and punted to mid field, ending the only other threat of the quarter. Head Coach Ted Ogdahl later commented that this failure to score hurt the team more in loss of spirit than the six points.

The Savages scored again on a safety at 10:38 when Jim Nicholson couldn't find the handle on a pass from center for a punt from his own end zone. Bill Wall, a 225 pound linebacker was on him before he could recover.

Willamette had two drives aborted by pass interceptions (out of a total of five for the afternoon) when a blocked field goal gave the Bearcats another chance. Bob Shields ran 58 yards before being caught from behind. It took only three plays for the score on a 38 yard pass play from Shinn to Spike Moore, at 1:42 to play. The kick was wide, and Willamette went into the locker room at half behind 9-6.

The Savages started fast in the second half and, after Willamette failed to move in the first series, scored at 12:41. Strate again set up a Cross pass as he

ran for 38 yards. Cross passed to Jim Northcott for 33 yards, Wilson's kick was again good, and EWC had upped its lead to 16-6.

The Bearcats were now committed to the aerial game of "catch-up." An ever dangerous flat pass by Shinn was picked off by Jerry Jantz who carried it 23 yards for another score. The PAT was good and that made it 14 points in 29 seconds.

The Bearcats fought back, driving 80 yards on the ground, but were stoped on the half yard line. A Savage fumble three plays later gave Willamette another chance, and Rod Allison found scoring territory on the end of a 24 yard pass from Shinn. The PAT again failed.

Eastern opened the fourth quarter by scoring a 22 yard field goal and kept Willamette in a hole the rest of the game on booming punts by Pat Zlateff. Mike Shinn did manage one more drive of 80 yards, 77 in the air capped by an 18 yard score to Jon McGladrey.

A total of six fumbles kept

either from mounting a sustained drive until 35 seconds

FINAL GAME STATISTICS

Teams	WU	EWC
First Downs	15	17
Rushing Ydg.	92	181
Passing Ydg.	223	163
Passes	10--27	14--32
Punts	5--25.6	8--43.0

left when Eastern scored on a two yard plunge by Ray Stookley.

A bad pass from center doomed the PAT and made the final 32-18.

Wayne's Barber Shop

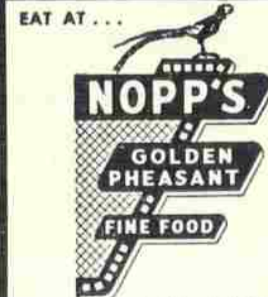
Introduces Continental Room

HAIRCUTS BY APPOINTMENT

- Men's Razor and Hair Styling
- Regular Haircuts
- Three Other Barbers
- No Waiting

PHONE 362-1868

146 S. 13th Salem, Ore.



Open 11 A.M. - 8:30 P.M.
Sunday 12:00 - 8:30 P.M.
248 Liberty NE



Quality is paramount at Stevens & Son Jewelers Silversmiths Salem-Portland

BEAT THE WOLF PACKS

BURGERS . . . 19¢

CHEESE BURGERS . . . 24¢

Bull's French Fried ONION RINGS 24¢

FRENCH FRIES . . 15¢

To have your order ready to go, just phone 363-0692

Herfy's Drive-Ins

Corner 13th and Mission

DO YOU KNOW

WHAT YOU NEED

in the way of life and health insurance? If you do, disregard this advertisement.

If You Do Not

THEN SEE LES GREEN

at the Kappa Sigma House --- call for free counseling, Ext. 251. Representative of

Investors Insurance Corporation

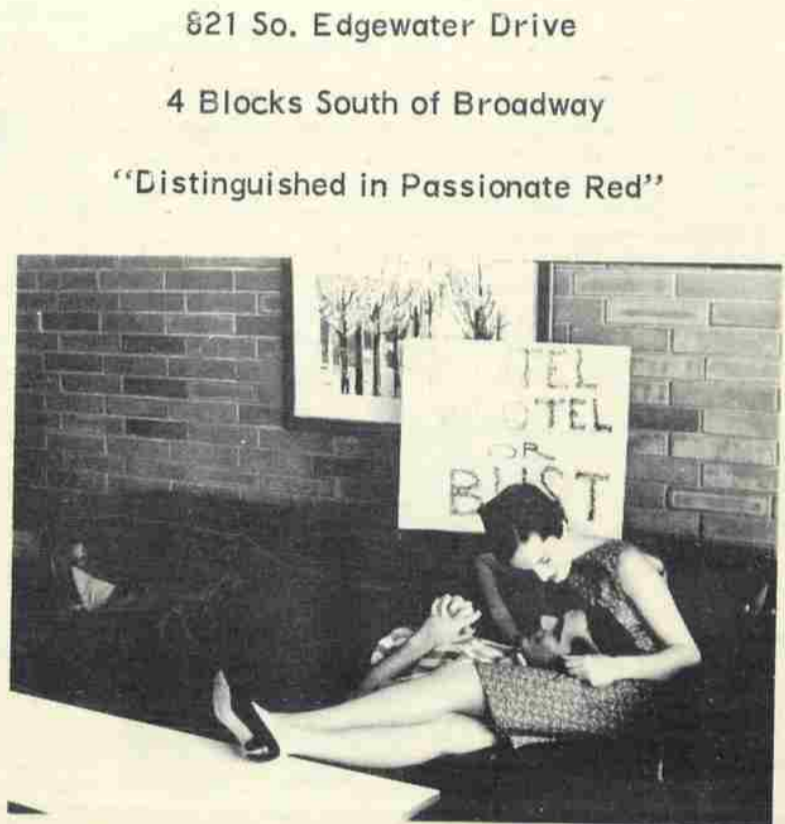
AND A WILLAMETTE UNIVERSITY STUDENT

The Seaside's newest NO-TEL MOTEL

"for peace and quiet"



Togetherness is a virtue at the No-Tel Motel



821 So. Edgewater Drive
4 Blocks South of Broadway
"Distinguished in Passionate Red"

Guests must wear shoes in public.



Tickle your fancy at the No-Tel Motel



All set to "go"

RESERVATIONS FOR:

- FAMILY OUTINGS
- COUPLES
- PLEDGE SNEAKS (SPECIAL RATES)
- FRATERNITY PARTIES (SPECIAL RATES)

SPECIAL STUDENT RATES

THIS COUPON
entitles the holder to
20% off
a room rental at
Ladum's
NO-TEL MOTEL
4 blocks south of Broadway
Seaside, Oregon

FOR RESERVATIONS PHONE:

Georgia Rappe - Manager
Seaside, Oregon 738-9073

or

Campus Ext. 251
Robert Ladum - Owner