

48th Annual Freshman Glee

March 24

1956

Second Straight For Fifty-Eight



For the second straight year the Class of 1958 won Freshman Glee. This year their winning song was "Rose Magic". Words for the song were written by Murial Miettunen and music by Ron Kingsly, who also were the accompanists for the winning Sophomores.



Director of the winning formation was George Hoyt.



The rose comes to life as the Sophomores claim the Glee Banner.



Ron Kingsly, Sophomore song-leader, directs a parody.

The Challenge Spurs



Royal Keith delivers the challenge for the Freshmen.



The Seniors, anticipating a return to the Mill Stream, escort president Dean Benson.



The Sophomores practice in the challenge assembly for Saturday night.



Doug Houser's humiliated classmates release him from the Freshmen's wrath.

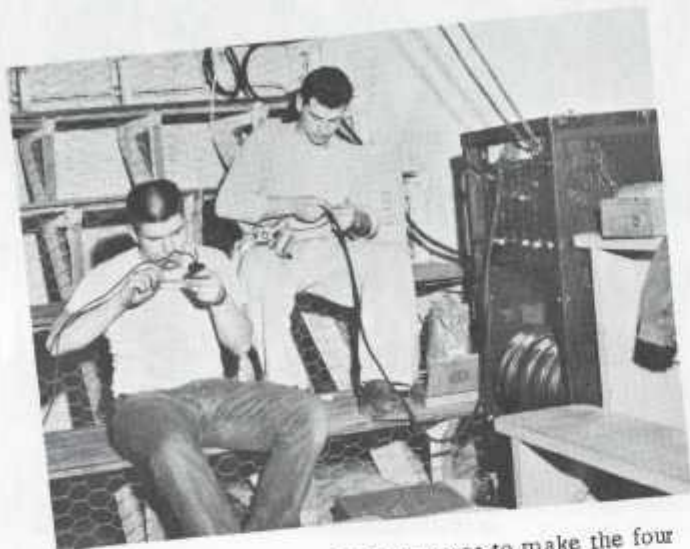


Dave Landis, Ron Kingsly, Margaret Huson, and Barbara Anderson, song leaders, joke about the out of tune piano.



Larry Willingham, Freshman formation leader, ponders on a marching problem.

Wearisome Preparation For...



The lighting committee prepares to make the four formations shine.



Members of the frosh class help remove the risers on "the morning after".



Three spectators calculate the oppositions chances for victory.



The class of '59 gets in step.



Mill Stream destined Juniors practice marching.



Formation leaders Larry Willingham, Volney Sigmund, Gay Hall, and George Hoyt, compare notes.

... The Climax



The Freshman Class placed third in their first try at Freshman Glee against tough competition. The words to the Freshman song, "Serenade to Willamette", were written by Judi Barber and the music by Sandi Nickel. Accompanists were Sandi Nickel and Doris Pomeroy.



Del Cummings, with the advise of the Executive Committee, co-ordinated the four classes for a very successful Glee.



This year's aquatic class was the Juniors. The words for their song, "The World of Night", were written by Tom Loree, Florence Hodge, Larry Lister, and Bo Kersh. The music was done by Martin Wolf. Accompanists were Barbara Freitag and Gary Monical.

of Glee

The Seniors finally climbed out of the Mill Stream and into a safe, dry second place. The music for their song, "Serenade in Silhouette", was written by Margaret Huson and Paul Ackerman and the words by Gay Hall and Bill Bjorkman. Accompanists were Paul Ackerman and Margaret Huson.



Part of the interim entertainment included the comedy act of Bill Nelson and Don Stoffer plus Sophie Goritson and the combo.



Reflections



"And first place goes to"



The Juniors pay...



Maggie and Paul.



"A house is not a home."



Del paves the way to Lausanne.



A serenade, a serenade!



"Such big blue eyes..."



Smile-2-3-4



"And guess what comes next?"



The Blue Monday judges take the stand.

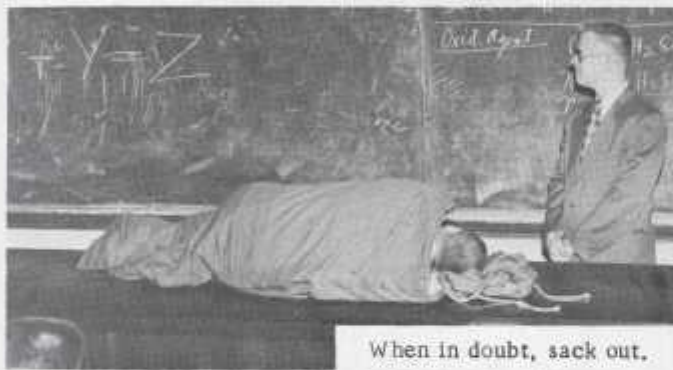
of Glee ... Blue Monday



... for their fourth place display.



Jim Fiske and his harem.



When in doubt, sack out.



The wino and the wench.



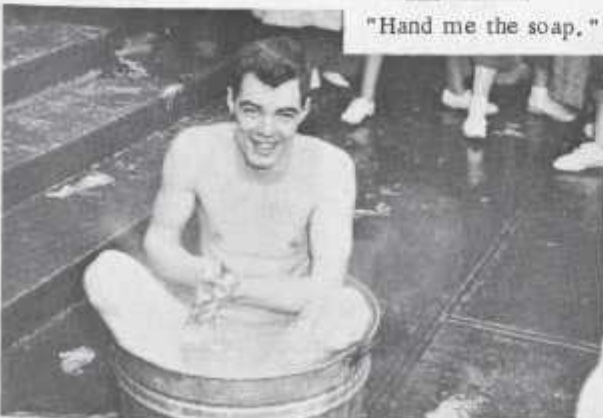
Two for a nickel.



"As a member of this wonderful organization,"



Front row material?



"Hand me the soap."



Off to the library.



In Back Of It All



The General Committee, comprised of the committee chairmen and their assistants, was the coordinating body of Glee. They would like to express their gratitude to everyone who contributed his time and effort to making the 48th Annual Glee a success.

Special thanks goes to Phil Henderson, Grank Bash, Lewis Schaad, and Ken Stoop, whose valuable assistance made this supplement possible.

The Souvenir Committee



Barbara Dennis
Secretary



Del Cummings
Glee Manager



Jim Anderson
Asst. Glee Manager



Pet Leveton
Publicity



Royal Kieth
Tickets



Norm Dyer
Lighting



June Lytle
Backdrop



Dean Bishoprick
Souvenir



Harriet Reed
Entertainment



Nancy Lee
Programs



Nancy Russell
Ushers



Bob Gilchrist
Chairs & Floor



Sybil Campbell
Decorations



Dick Audly
Records



Walt Hubbard
Stage